

## IMPORT PRICE INDEX IN INDUSTRY: November 2024, y-o-y decrease of 2.8%

The Overall Import Price Index (MPI) in Industry with base year 2021=100.0 in November 2024 recorded a decrease of 2.8% compared with November 2023. The corresponding index in November 2023 had recorded a decrease of 8.6% compared with November 2022 (Table 1.I).

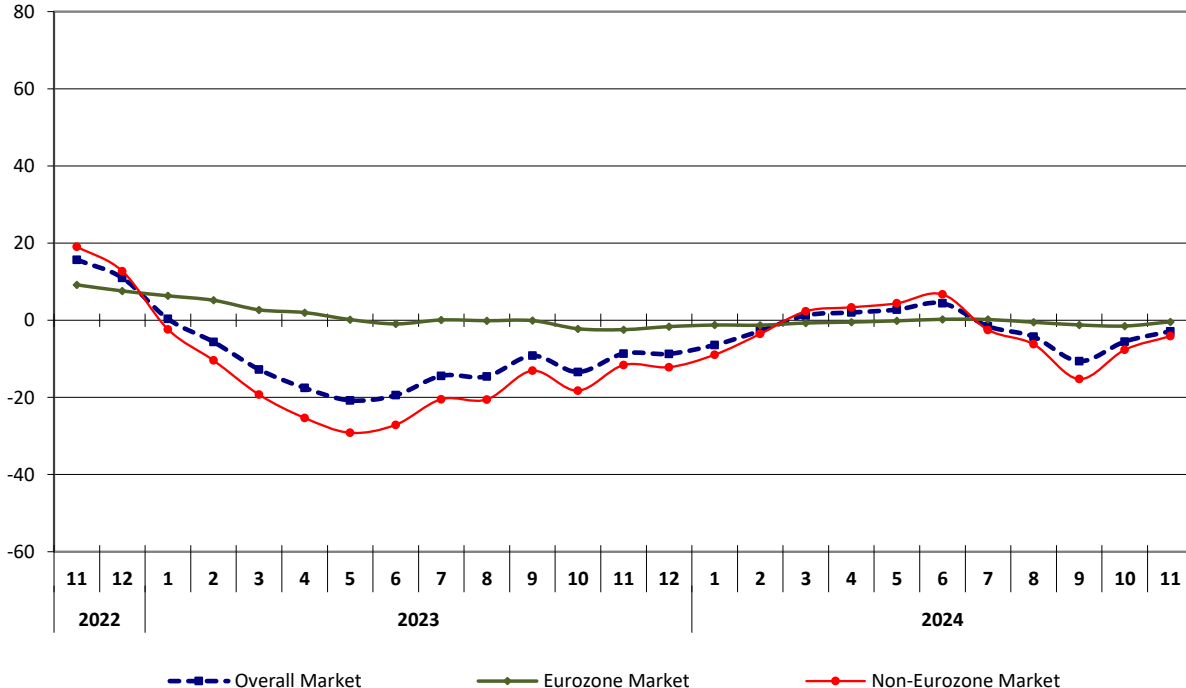
The Overall Index in November 2024 recorded an increase of 0.5% compared with October 2024. The corresponding index in November 2023 had recorded a decrease of 2.3% compared with October 2023 (Table 1.II).

The twelve-month average Overall Index from December 2023 to November 2024, decreased by 2.8% in comparison with the corresponding index of the period from December 2022 to November 2023, while the decrease recorded between the previous twelve-month periods amounted to 10.9% (Table 4).

The time series of MPI are available on the website of ELSTAT, at:

<http://www.statistics.gr/en/statistics/-/publication/DKT18/>

**Evolution of annual rates of change (%) of  
Import Price Index (MPI) in Industry (2021=100.0)**



**Information on methodological issues:**

Business Statistics Division  
 Manufacture - Construction Indices and Industrial Products Section  
 Malamati Podara  
 Tel: +30 213 135 2507  
[E-mail: m.podara@statistics.gr](mailto:m.podara@statistics.gr)

**Information on data provision:**

Tel: +30 213 135 2022, 2308, 2310  
[E-mail: data.dissem@statistics.gr](mailto:data.dissem@statistics.gr)

## 1. Annual rates of change: November 2024 compared with November 2023

The decrease of 2.8% in the Overall Import Price Index in Industry in November 2024 compared with November 2023 is on account of the yearly changes of the sub-indices of the markets as follows:

- a. 4.1% decrease in the MPI of the Non-Eurozone Market (Table 3.I).
- b. 0.4% decrease in the MPI of the Eurozone Market (Table 2.I).

More specifically, the aforementioned decrease for the overall market was the result of the yearly changes mainly of the sub-indices in the following NACE Rev.2 divisions:

Code	Division	Rates of change (%)
06	Extraction of crude petroleum and natural gas	-9.7
19	Manufacture of coke and refined petroleum products	-7.7
26	Manufacture of computer, electronic and optical products	-2.5
23	Manufacture of other non-metallic mineral products	-2.0
21	Manufacture of basic pharmaceutical products and pharmaceutical preparations	-0.7
14	Manufacture of wearing apparel	0.5
17	Manufacture of paper-pulp, paper and paper products	1.8
29	Manufacture of motor vehicles, trailers and semi-trailers	2.7
10	Manufacture of food products	3.0
24	Manufacture of basic metals	3.5
35	Electricity, gas, steam and air conditioning supply	7.2
12	Manufacture of tobacco products	17.2

## 2. Monthly rates of change: November 2024 compared with October 2024

The increase of 0.5% in the Overall Import Price Index in Industry in November 2024 compared with October 2024 is on account of the monthly changes of the sub-indices of the markets as follows:

- a. 0.7% increase in the MPI of the Non-Eurozone Market (Table 3.II).
- b. 0.2% increase in the MPI of the Eurozone Market (Table 2.II).

More specifically, the aforementioned increase for the overall market was the result of the monthly changes mainly of the sub-indices in the following NACE Rev.2 divisions:

Code	Division	Rates of change (%)
19	Manufacture of coke and refined petroleum products	3.5
12	Manufacture of tobacco products	2.4
06	Extraction of crude petroleum and natural gas	1.4
11	Manufacture of beverages	0.5
10	Manufacture of food products	0.4
26	Manufacture of computer, electronic and optical products	0.4
29	Manufacture of motor vehicles, trailers and semi-trailers	0.1
28	Manufacture of machinery and equipment n.e.c.	-0.2
20	Manufacture of chemicals and chemical products	-0.2
24	Manufacture of basic metals	-0.3
17	Manufacture of paper-pulp, paper and paper products	-0.7
35	Electricity, gas, steam and air conditioning supply	-3.3

**Table 1. Import Price Index (MPI) in Industry: Overall Market**

**Base year: 2021=100.0**

**I. Annual changes**

Codes	Main Industrial Groupings - MIGs	Weighting coefficient (%)	November			Rates of change (%)	
			2024	2023	2022	2024/2023	2023/2022
20	Overall Market	100.00	108.42	111.60	122.15	-2.8	-8.6
40	Intermediate Goods	27.05	108.40	107.79	111.16	0.6	-3.0
50	Capital Goods	16.33	107.73	108.53	106.05	-0.7	2.3
60	Durable Consumer Goods	3.33	105.40	105.76	103.53	-0.3	2.2
70	Non-Durable Consumer Goods	24.53	109.34	108.25	108.73	1.0	-0.4
90	Energy	28.76	108.39	116.84	141.81	-7.2	-17.6

**II. Monthly changes**

Codes	Main Industrial Groupings - MIGs	Weighting coefficient (%)	November	October	Rates of change (%)	November	October	Rates of change (%)
			2024	2024		2023	2023	
20	Overall Market	100.00	108.42	107.90	0.5	111.60	114.21	-2.3
40	Intermediate Goods	27.05	108.40	108.54	-0.1	107.79	107.78	0.0
50	Capital Goods	16.33	107.73	107.59	0.1	108.53	108.58	-0.1
60	Durable Consumer Goods	3.33	105.40	105.55	-0.1	105.76	105.50	0.2
70	Non-Durable Consumer Goods	24.53	109.34	109.14	0.2	108.25	108.38	-0.1
90	Energy	28.76	108.39	106.69	1.6	116.84	123.21	-5.2

*Note: The indices are rounded up to two decimal digits when published and percentage changes up to one decimal digit when published.*

**Table 2. Import Price Index (MPI) in Industry: Eurozone Market**

**Base year: 2021=100.0**

**I. Annual changes**

Codes	Main Industrial Groupings - MIGs	Weighting coefficient (%)	November			Rates of change (%)	
			2024	2023	2022	2024/2023	2023/2022
20	Overall Market	42.87	108.35	108.79	111.49	-0.4	-2.4
40	Intermediate Goods	13.08	108.05	108.06	109.90	0.0	-1.7
50	Capital Goods	10.16	107.10	106.32	105.43	0.7	0.8
60	Durable Consumer Goods	1.52	102.65	104.52	102.05	-1.8	2.4
70	Non-Durable Consumer Goods	16.35	108.78	109.58	110.41	-0.7	-0.8
90	Energy	1.76	118.73	118.49	154.29	0.2	-23.2

**II. Monthly changes**

Codes	Main Industrial Groupings - MIGs	Weighting coefficient (%)	November	October	Rates of change (%)	November	October	Rates of change (%)
			2024	2024		2023	2023	
20	Overall Market	42.87	108.35	108.18	0.2	108.79	109.81	-0.9
40	Intermediate Goods	13.08	108.05	108.21	-0.1	108.06	108.23	-0.2
50	Capital Goods	10.16	107.10	106.69	0.4	106.32	106.40	-0.1
60	Durable Consumer Goods	1.52	102.65	102.57	0.1	104.52	104.74	-0.2
70	Non-Durable Consumer Goods	16.35	108.78	108.71	0.1	109.58	109.76	-0.2
90	Energy	1.76	118.73	116.34	2.0	118.49	133.27	-11.1

*Note: The indices are rounded up to two decimal digits when published and percentage changes up to one decimal digit when published.*

**Table 3. Import Price Index (MPI) in Industry: Non-Eurozone Market**

**Base year: 2021=100.0**

**I. Annual changes**

Codes	Main Industrial Groupings - MIGs	Weighting coefficient (%)	November			Rates of change (%)	
			2024	2023	2022	2024/2023	2023/2022
20	Overall Market	57.13	108.47	113.14	127.98	-4.1	-11.6
40	Intermediate Goods	13.97	108.73	107.53	112.34	1.1	-4.3
50	Capital Goods	6.17	108.76	111.39	106.85	-2.4	4.3
60	Durable Consumer Goods	1.81	107.72	106.96	104.95	0.7	1.9
70	Non-Durable Consumer Goods	8.18	110.46	105.97	105.82	4.2	0.1
90	Energy	27.00	107.72	116.75	141.13	-7.7	-17.3

**II. Monthly changes**

Codes	Main Industrial Groupings - MIGs	Weighting coefficient (%)	November	October	Rates of change (%)	November	October	Rates of change (%)
			2024	2024		2023	2023	
20	Overall Market	57.13	108.47	107.69	0.7	113.14	116.62	-3.0
40	Intermediate Goods	13.97	108.73	108.85	-0.1	107.53	107.36	0.2
50	Capital Goods	6.17	108.76	109.07	-0.3	111.39	111.42	0.0
60	Durable Consumer Goods	1.81	107.72	108.06	-0.3	106.96	106.23	0.7
70	Non-Durable Consumer Goods	8.18	110.46	109.98	0.4	105.97	106.00	0.0
90	Energy	27.00	107.72	106.06	1.6	116.75	122.67	-4.8

*Note: The indices are rounded up to two decimal digits when published and percentage changes up to one decimal digit when published.*

**Table 4. Changes of Import Price Index (MPI) in Industry**

**Base year: 2021=100.0**

Year and month	Overall Index	Monthly rates of change (%)	Annual rates of change (%)	12-month average index (moving average)	Annual rates of change (%) of 12-month average index
<b>2022 :</b>					
1	117.61	9.7	31.8	102.36	23.4
2	120.83	2.7	27.2	104.52	25.3
3	127.17	5.2	34.6	107.24	26.2
4	133.58	5.0	39.1	110.37	27.3
5	134.14	0.4	37.7	113.43	28.6
6	132.60	-1.1	32.8	116.16	29.6
7	130.76	-1.4	28.1	118.55	30.1
8	132.82	1.6	32.0	121.24	31.1
9	129.89	-2.2	25.2	123.41	30.9
10	131.90	1.5	21.3	125.34	29.8
11	122.15	-7.4	15.7	126.72	28.9
12	118.96	-2.6	11.0	127.70	27.7
<b>Annual average</b>	<b>127.70</b>				
<b>2023 :</b>					
1	118.03	-0.8	0.4	127.74	24.8
2	114.04	-3.4	-5.6	127.17	21.7
3	110.97	-2.7	-12.7	125.82	17.3
4	110.15	-0.7	-17.5	123.87	12.2
5	106.29	-3.5	-20.8	121.55	7.2
6	106.83	0.5	-19.4	119.40	2.8
7	111.94	4.8	-14.4	117.83	-0.6
8	113.49	1.4	-14.6	116.22	-4.1
9	117.97	3.9	-9.2	115.23	-6.6
10	114.21	-3.2	-13.4	113.75	-9.2
11	111.60	-2.3	-8.6	112.87	-10.9
12	108.62	-2.7	-8.7	112.01	-12.3
<b>Annual average</b>	<b>112.01</b>				
<b>2024 :</b>					
1	110.48	1.7	-6.4	111.38	-12.8
2	110.88	0.4	-2.8	111.12	-12.6
3	112.37	1.3	1.3	111.24	-11.6
4	112.36	-0.01	2.0	111.42	-10.0
5	109.22	-2.8	2.8	111.66	-8.1
6	111.52	2.1	4.4	112.05	-6.2
7	110.18	-1.2	-1.6	111.91	-5.0
8	108.64	-1.4	-4.3	111.50	-4.1
9	105.46	-2.9	-10.6	110.46	-4.1
10	107.90	2.3	-5.5	109.94	-3.4
11	108.42	0.5	-2.8	109.67	-2.8

Note: The indices are rounded up to two decimal digits when published and percentage changes up to one decimal digit when published.

## METHODOLOGICAL NOTES

<b>Generally</b>	The Import Price Index (MPI) in Industry, in its current form, has been compiled since January 2005, when it replaced the Final Products Wholesale Price Index with foreign final products from abroad. The Import Price Index (MPI) in Industry was revised last time with base year 2021=100.0 and the previous time series were adjusted accordingly.
<b>Purpose of the index</b>	The purpose of the Import Price Index (MPI) in Industry is to measure the monthly rates of change of the prices of products in the sectors of mining, manufacturing and energy that are imported from abroad and are transferred, through their purchase, to resident units-enterprises irrespective of their branch of economic activity.
<b>Definitions</b>	<p>The Import Price Index is a monthly index and it is composed by the sub-indices of the import prices of the two market zones: the eurozone and the non-eurozone countries depending on the country of origin of imports.</p> <p>The collected values of imported products are CIF (Cost Insurance Freight) prices at the Greek border, free of all taxes and duties payable by the importing enterprises. This means that they include the product transport (freight) and insurance costs incurred by the enterprise for their importation.</p> <p>The price data for the compilation of the MPI are collected from units-enterprises that import the goods that have been selected at the initial stage. The prices refer mainly to the transactions between the resident enterprises that import products and the enterprises established abroad which act as exporters of products to Greece.</p>
<b>Legal framework</b>	The compilation of MPI is governed by Council Regulation (EU) No 2019/2152 of the European Parliament and of the Council on European business statistics (EBS-Regulation), as well as the Commission Implementing Regulation (EU) No 2020/1197 laying down technical specifications and arrangements pursuant to Regulation (EU) No 2019/2152. Furthermore, the MPI is governed by Regulation (EC) No 1893/2006 of the European Parliament and of the Council, by Commission Regulation (EC) No 656/2007 and the Regulation (EC) No 451/2008 of the Council.
<b>Reference period</b>	Month.
<b>Base year</b>	2021=100.0.
<b>Revision</b>	Pursuant to the provisions of the Council Regulation (EU) 2019/2152, according to which the short-term indices are revised every five (5) years, in years ending in 0 or 5, in the current revision 2021=100.0 due to the impact of the pandemic, the indices were revised with base year 2021.
<b>Statistical classifications</b>	At the level of branches of economic activities the statistical classification of economic activities NACE Rev.2 of EU is used (Regulation No 1893/2006), while at the level of main industrial groupings, the allocation of two-digit and three-digit NACE Rev.2 headings to categories of aggregate classification is used, in accordance with Commission Regulation No 656/2007. At product level, the statistical classification CPA 2008 of EU is used, according to the Council Regulation No 451/2008.
<b>Geographical coverage</b>	The index covers the whole of the country, with data from Attiki and other 31 Regional Units of the country.
<b>Coverage of economic activities</b>	The index covers the sections of mining-quarrying manufacturing, electricity and natural gas, the main industrial groups, and all the levels of economic activities (divisions, groups, classes) and the level of imported products.
<b>Statistical survey</b>	The data are collected from 811 enterprises and the total number of observations (prices) is approximately 2,382. More specifically, the following items are surveyed: 297 product codes, derived from eurozone countries and 260 product codes that originate from non-eurozone countries.
<b>Publication of data</b>	The MPI with the new base year 2021=100.0 is released since December 2024, with October 2024 as the first reference month. Data with base year 2021=100.0 are available from January 2000 onwards.
<b>References</b>	<p>More information on the methodology concerning the compilation and calculation of the index, as well as the time series is available on the website of ELSTAT at the following link:</p> <p><a href="http://www.statistics.gr/en/statistics/-/publication/DKT18/">http://www.statistics.gr/en/statistics/-/publication/DKT18/</a></p>