



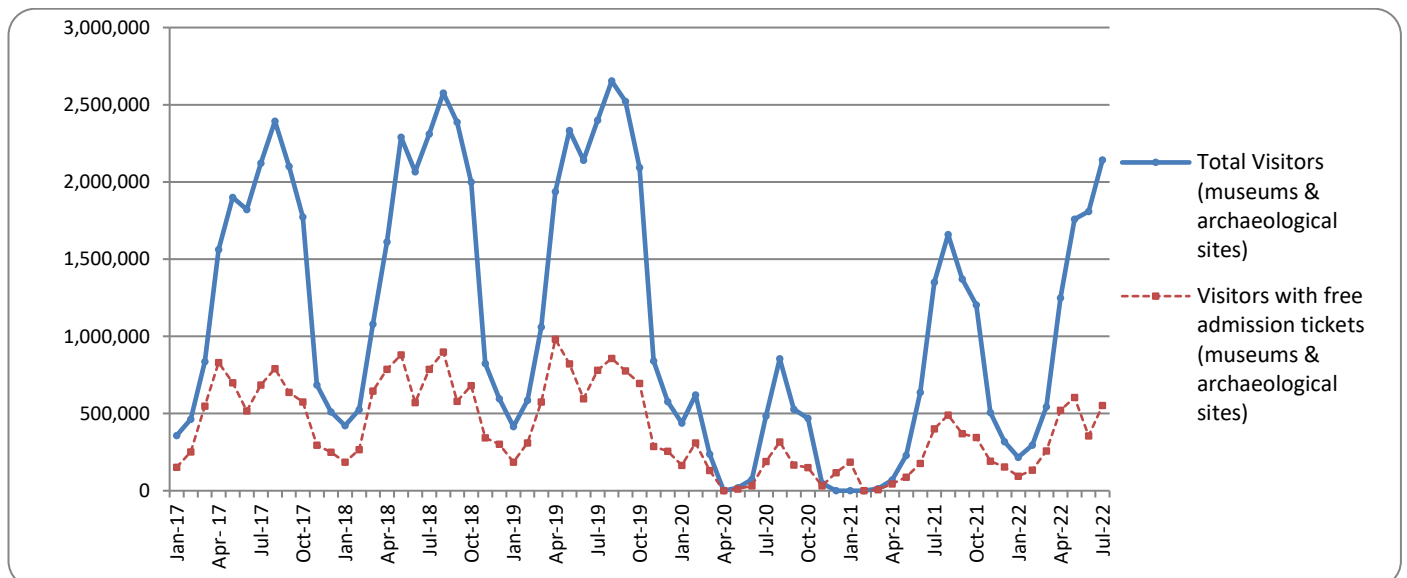
PRESS RELEASE

SURVEY ON MUSEUMS AND ARCHAEOLOGICAL SITES ATTENDANCE JULY 2022

The Hellenic Statistical Authority (ELSTAT) announces the results of the *Survey on Museums and Archaeological Sites Attendance* for July 2022. More specifically:

- During July 2022 compared with the corresponding month of 2021, Museums recorded a 70.4% increase in the number of visitors and a 50.4% increase in the number of free admission visitors, as well as an 80.2% increase in their receipts (Table 1).
- As regards Archaeological sites, in July 2022 compared with the corresponding month of 2021, an increase of 54.4% was recorded at the number of visitors, of 31.9% in the number of free admission visitors and of 70.7% in the corresponding receipts (Table 1).
- During the seven month period from January to July 2022, compared to the corresponding period of 2021, an increase of 294.5% was recorded in the number of visitors, of 312.6% in the number of free admission visitors and of 264.8% in the relevant receipts, given the fact that in the framework of the preventative measures against the Covid-19 pandemic, the operation of the museums was gradually suspended from November 1st 2020 until May 13th 2021 (Table 2).
- As regards Archaeological sites, during the seven month period from January to July 2022, compared to the corresponding period of 2021, an increase of 231.9% was recorded in the number of visitors, while an increase of 223.7% was observed in the number of free admission visitors and of 242.6% in the relevant receipts, given the suspension of operation of Archaeological sites from November 7th 2020 until May 13th 2021 (Table 2).

Graph 1: Visitors of Museums and Archaeological sites (January 2017 – July 2022)



Information on methodological issues:

Sectoral Statistics Division
Tourism and Culture Statistics Section
Head of Section: Eleni Papadopoulou
Tel: +30 213 135 2168
e-mail: e.papadopoulou@statistics.gr

Information for data provision:

Tel. +30 213 135 2022, 2308, 2310
e-mail: data.dissem@statistics.gr

**TABLE 1: VISITORS OF MUSEUMS AND ARCHAEOLOGICAL SITES - TOTAL RECEIPTS
(JULY 2021 & JULY 2022)**

I. NUMBER OF VISITORS			
Museums and Archaeological sites	2021 ⁽²⁾	2022	Change 2022/2021
Total number of visitors (A+B)	1,349,877	2,141,792	58.7%
A. Museums (C+E)	358,053	610,160	70.4%
Acropolis Museum	98,659	192,900	95.5%
National Archaeological	32,147	60,274	87.5%
Ancient Olympia	6,999	10,253	46.5%
Palace of the Grand Master (Rhodes)	27,225	45,517	67.2%
Herakleion Archaeological (Crete)	25,648	41,616	62.3%
White Tower	13,469	23,332	73.2%
Delphi	9,717	16,953	74.5%
Other museums ⁽³⁾	144,189	219,315	52.1%
B. Archaeological Sites (D+F)	991,824	1,531,632	54.4%
Epidavros ⁽¹⁾	34,610	50,383	45.6%
The Acropolis of Mycenae & Atreus' Treasure	27,807	44,111	58.6%
The Acropolis of Athens	218,660	409,267	87.2%
Sounio	26,095	38,830	48.8%
The Acropolis of Lindos	73,460	102,556	39.6%
Royal Tombs of Vergina	9,198	12,406	34.9%
Ancient Olympia	27,266	47,800	75.3%
Knossos (Crete)	95,880	148,917	55.3%
Phaistos (Crete)	9,234	11,304	22.4%
Ancient Korinthos ⁽¹⁾	9,395	17,438	85.6%
Mystras ⁽¹⁾	15,065	17,516	16.3%
Delphi	24,825	39,995	61.1%
Other archaeological sites ⁽³⁾	420,329	591,109	40.6%
II. VISITORS WHO PAID TICKET			
	2021 ⁽²⁾	2022	Change 2022/2021
Total number of visitors who paid ticket (C+D)	947,946	1,588,747	67.6%
C. Museums	234,588	424,462	80.9%
D. Archaeological sites	713,358	1,164,285	63.2%
III. VISITORS WITH FREE ADMISSION TICKETS			
	2021 ⁽²⁾	2022	Change 2022/2021
Total number of visitors with free admission ticket (E+F)⁽³⁾	401,931	553,045	37.6%
E. Museums	123,465	185,698	50.4%
F. Archaeological sites	278,466	367,347	31.9%
IV. RECEIPTS (euros)			
	2021 ⁽²⁾	2022	Change 2022/2021
Total Receipts (G+H)	10,791,452	18,614,117	72.5%
G. Museums	2,010,818	3,624,075	80.2%
H. Archaeological sites	8,780,634	14,990,042	70.7%

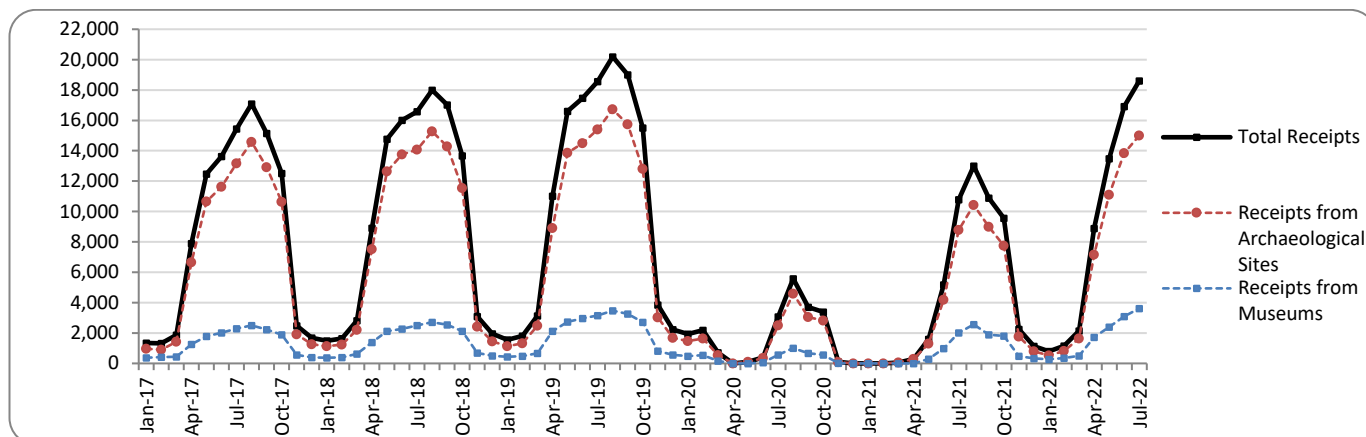
⁽¹⁾ Flat rate ticket, valid both for the museum and the archaeological site.

⁽²⁾ The operation of Museums was suspended gradually from November 1st 2020 until May 13th 2021. The operation of Archaeological Sites was suspended from November 7th 2020 until March 21st 2021, in the framework of the preventative measures against the Covid-19 pandemic.

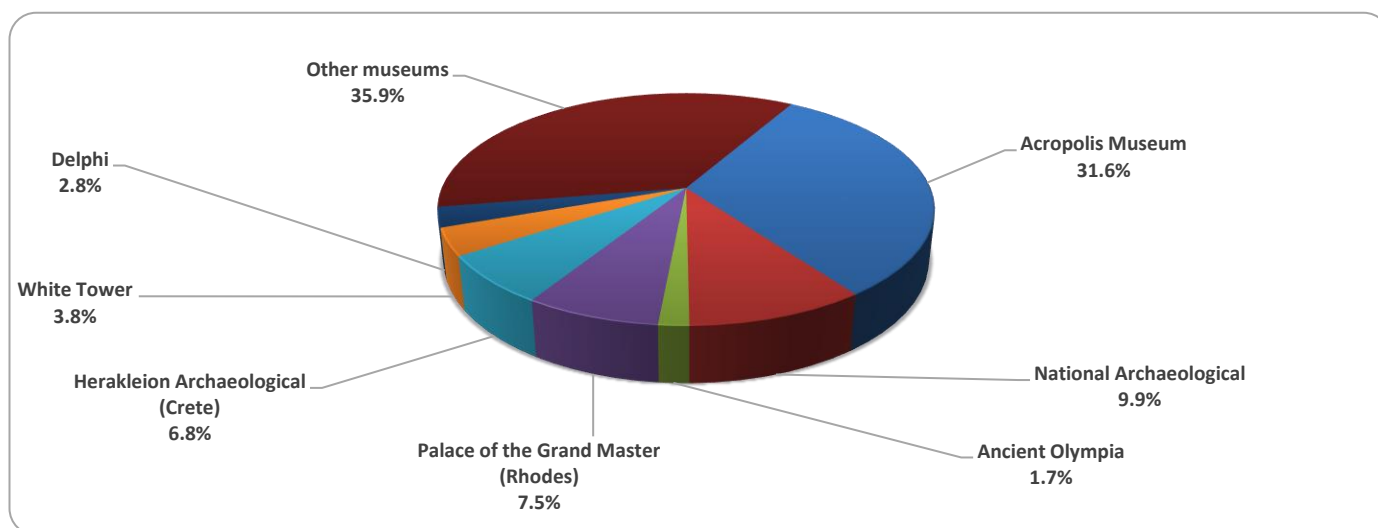
⁽³⁾ Revised data of the number of visitors with free admission ticket for the Museum of Amorgos Archaeological Collection and the Archaeological Site of the Temple of Artemis at Vravra, for reference month of July 2021.

The following graphs depict the evolution of the receipts of Museums and Archaeological Sites (Graph 2), as well as the number of visitors by Museum (Graph 3) and by Archaeological Site (Graph 4).

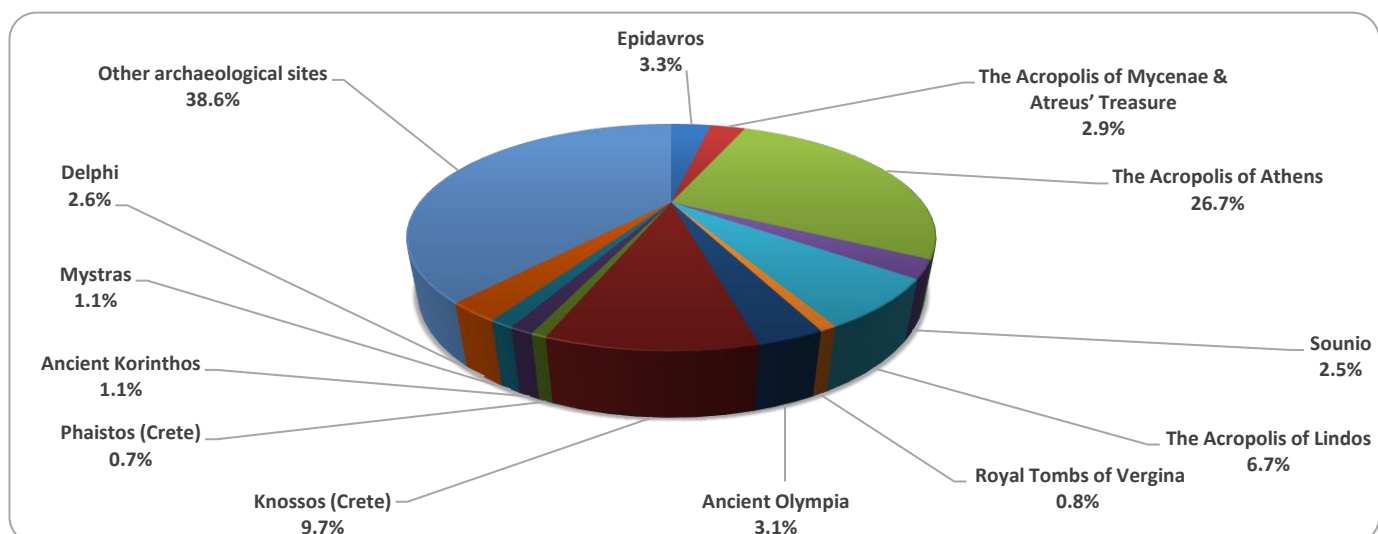
Graph 2: Receipts from Museums and Archaeological Sites (January 2017 – July 2022)
(in thousand euro)



Graph 3: Percentage distribution of visitors by Museum, July 2022



Graph 4: Percentage distribution of visitors by Archaeological site, July 2022



**TABLE 2: VISITORS OF MUSEUMS AND ARCHAEOLOGICAL SITES - TOTAL RECEIPTS
(2020, 2021, JANUARY- JULY 2021, 2022)**

I. VISITORS					
Museums and Archaeological sites	2020 ⁽²⁾	2021 ⁽²⁾	JANUARY -JULY		change 2022/2021
			2021 ⁽²⁾	2022	
Total number of visitors (A+B)	3,772,828	7,357,026	2,298,305	8,013,362	248.7%
A. Museums (C+E)	1,100,904	2,047,481	614,361	2,423,764	294.5%
Acropolis Museum	325,969	547,908	163,122	760,851	366.4%
National Archaeological	98,175	189,208	50,666	234,547	362.9%
Ancient Olympia	21,956	34,367	10,555	51,657	389.4%
Palace of the Grand Master (Rhodes)	54,572	142,530	40,412	127,345	215.1%
Herakleion Archaeological (Crete)	63,027	127,574	39,174	117,937	201.1%
White Tower	62,007	77,983	24,571	92,574	276.8%
Delphi	41,984	58,102	15,971	81,078	407.7%
Other museums ⁽³⁾	433,214	869,809	269,890	957,775	254.9%
B. Archaeological Sites (D+F)	2,671,924	5,309,545	1,683,944	5,589,598	231.9%
Epidavros ⁽¹⁾	103,532	182,118	55,441	208,502	276.1%
The Acropolis of Mycenae & Atreus' Treasure	78,839	156,227	43,831	199,813	355.9%
The Acropolis of Athens	620,132	1,219,717	395,001	1,566,773	296.7%
Sounio	100,319	171,348	70,181	176,527	151.5%
The Acropolis of Lindos	156,462	349,418	110,123	291,293	164.5%
Royal Tombs of Vergina	37,586	56,790	15,727	88,528	462.9%
Ancient Olympia	64,759	143,549	45,262	164,004	262.3%
Knossos (Crete)	175,927	445,160	145,439	408,988	181.2%
Phaistos (Crete)	31,885	48,599	14,233	35,035	146.2%
Ancient Korinthos ⁽¹⁾	31,981	59,271	15,819	78,501	396.2%
Mystras ⁽¹⁾	36,352	78,762	24,179	74,527	208.2%
Delphi	75,983	146,061	41,921	167,779	300.2%
Other archaeological sites ⁽³⁾	1,158,167	2,252,525	706,787	2,129,328	201.3%
II. VISITORS WHO PAID TICKET					
	2020 ⁽²⁾	2021 ⁽²⁾	JANUARY -JULY		change 2022/2021
			2021 ⁽²⁾	2022	
Total number of visitors who paid ticket (C+D)	2,268,397	5,090,418	1,581,998	5,493,516	247.3%
C. Museums	605,426	1,289,896	387,949	1,489,623	284.0%
D. Archaeological sites	1,662,971	3,800,522	1,194,049	4,003,893	235.3%
III. VISITORS WITH FREE ADMISSION TICKETS					
	2020 ⁽²⁾	2021 ⁽²⁾	JANUARY -JULY		change 2022/2021
			2021 ⁽²⁾	2022	
Total number of visitors with free admission ticket (E+F) ⁽³⁾	1,504,431	2,266,608	716,307	2,519,846	251.8%
E. Museums	495,478	757,585	226,412	934,141	312.6%
F. Archaeological sites	1,008,953	1,509,023	489,895	1,585,705	223.7%
IV. RECEIPTS (euros)					
	2020 ⁽²⁾	2021 ⁽²⁾	JANUARY -JULY		change 2022/2021
			2021 ⁽²⁾	2022	
Total Receipts (G+H)	21,176,036	54,735,194	17,886,320	62,002,611	246.6%
G. Museums	4,047,401	10,385,644	3,272,417	11,939,217	264.8%
H. Archaeological sites	17,128,635	44,349,550	14,613,903	50,063,394	242.6%

⁽¹⁾ Flat rate ticket, valid both for the museum and the archaeological site.

⁽²⁾ The operation of Museums was suspended from March 14th until June 16th 2020 and again gradually from November 1st 2020 until May 13th 2021. The operation of Archaeological Sites was suspended from March 14th until May 17th 2020 and from November 7th 2020 until March 21st 2021, in the framework of the preventative measures against the Covid-19 pandemic.

⁽³⁾ Revised data of the number of visitors with free admission ticket for the Museum of Amorgos Archaeological Collection and the Archaeological Site of the Temple of Artemis at Vravra, for reference month of July 2021.

EXPLANATORY NOTES

Survey on Museums and Archaeological Sites Attendance	The Survey on Museums and Archaeological Sites Attendance has been producing results since 1970. The survey collects data from the Hellenic Organization of Cultural Resources Development (HOCRED), supervised by the Ministry of Culture and Sports, on the number of visitors and the receipts from the tickets sold in the Museums and Archaeological sites of the country. The corresponding data for the Acropolis Museum is available from December 2009 onwards.
Legal Framework	The survey is conducted since 1970 on a regular basis and it produces results on a monthly and yearly basis, in compliance with the Joint Ministerial Decision 15189/B379/73.
Reference Period	1/7/2022 - 31/7/2022
Methodology and Definitions	The survey is conducted on a monthly basis from data mainly collected from the Hellenic Organization of Cultural Resources Development (HOCRED), supervised by the Ministry of Culture and Sports, on the number of visitors and the receipts from the tickets sold in the Museums and Archaeological sites of the Country. ELSTAT tabulates and presents the data for the whole of the Country, by month and by year.
	Number of flat rate tickets: From April 1999 onwards, in some museums and the nearby archaeological sites, in addition to the ordinary ticket, a new “flat rate ticket” was established, which is valid for both the museum and the nearby archaeological site. The total number of these flat rate tickets for July 2022 was 147,828
References	More information on the Survey on Museums and Archaeological Sites Attendance and detailed time series are available on: http://www.statistics.gr/en/statistics/-/publication/SCI21/