

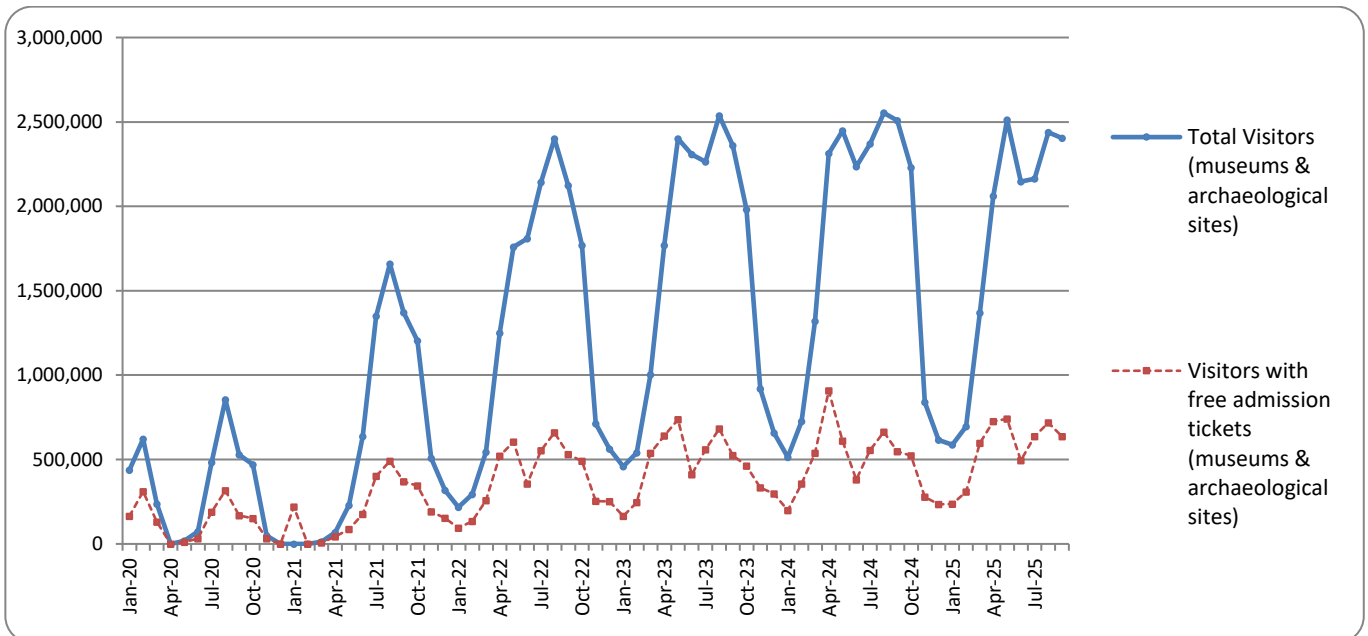


## SURVEY ON MUSEUMS AND ARCHAEOLOGICAL SITES ATTENDANCE SEPTEMBER 2025

The Hellenic Statistical Authority (ELSTAT) announces the results of the *Survey on Museums and Archaeological Sites Attendance* for September 2025. More specifically:

- During September 2025 compared with the corresponding month of 2024, museums recorded an increase of 0.8% in the number of visitors, of 20.5% in the number of free admission visitors and of 37.6% in their receipts (Table 1).
- As regards archaeological sites, in September 2025 compared with the corresponding month of 2024, a decrease of 6.3% was recorded in the number of visitors, an increase of 14.4% in the number of free admission visitors and of 45.8% in the corresponding receipts (Table 1).
- During the nine-month period from January to September 2025, compared with the corresponding period of 2024, a decrease of 0.7% was recorded in the number of visitors of museums, an increase of 9.3% in the number of free admission visitors and of 34.8% in the relevant receipts (Table 2).
- As regards archaeological sites, during the nine-month period from January to September 2025, compared with the corresponding period of 2024, a decrease of 4.8% was recorded in the number of visitors, an increase of 5.9% in the number of free admission visitors and of 40.8% was observed in the relevant receipts (Table 2).

**Graph 1: Visitors of Museums and Archaeological sites (January 2020 – September 2025)**



**Information on methodological issues:**

Sectoral Statistics Division  
Tourism and Culture Statistics Section  
Head of Section: Eleni Papadopoulou  
Tel: +30 213 135 2168  
e-mail: [e.papadopoulou@statistics.gr](mailto:e.papadopoulou@statistics.gr)

**Information for data provision:**

Tel. +30 213 135 2022, 2308, 2310  
e-mail: [data.dissem@statistics.gr](mailto:data.dissem@statistics.gr)

**TABLE 1: VISITORS OF MUSEUMS AND ARCHAEOLOGICAL SITES - TOTAL RECEIPTS**  
(SEPTEMBER 2024 & SEPTEMBER 2025)

<b>I. NUMBER OF VISITORS</b>			
Museums and Archaeological sites	2024	2025	Change 2025/2024
<b>Total number of visitors (A+B)</b>	<b>2,508,449</b>	<b>2,404,596</b>	<b>-4.1%</b>
<b>A. Museums (C+E)</b>	<b>753,007</b>	<b>758,944</b>	<b>0.8%</b>
Acropolis Museum <sup>(2)</sup>	198,013	211,775	7.0%
National Archaeological	65,473	70,532	7.7%
Ancient Olympia <sup>(3)</sup>	42,752	32,430	-24.1%
Palace of the Grand Master (Rhodes) <sup>(2)</sup>	58,124	52,156	-10.3%
Heraklion Archaeological (Crete)	55,836	55,809	0.0%
White Tower	23,404	20,934	-10.6%
Delphi <sup>(3)</sup>	53,288	53,432	0.3%
Other museums <sup>(3)</sup>	256,117	261,876	2.2%
<b>B. Archaeological Sites (D+F)</b>	<b>1,755,442</b>	<b>1,645,652</b>	<b>-6.3%</b>
Epidavros	64,528	56,544	-12.4%
The Acropolis of Mycenae & Atreus' Treasure	58,324	53,192	-8.8%
The Acropolis of Athens	467,982	477,544	2.0%
Sounio	41,937	42,606	1.6%
The Acropolis of Lindos	118,890	100,884	-15.1%
Royal Tombs of Vergina	22,146	19,107	-13.7%
Ancient Olympia <sup>(1)(3)</sup>	33,749	30,341	-10.1%
Knossos (Crete)	147,019	143,083	-2.7%
Phaistos (Crete)	11,910	10,130	-14.9%
Ancient Korinthos	31,979	31,352	-2.0%
Mystras	18,329	16,245	-11.4%
Delphi <sup>(3)</sup>	25,266	21,851	-13.5%
Other archaeological sites	713,383	642,773	-9.9%
<b>II. VISITORS WHO PAID TICKET</b>			
	2024	2025	Change 2025/2024
<b>Total number of visitors who paid ticket (C+D)</b>	<b>1,961,472</b>	<b>1,767,911</b>	<b>-9.9%</b>
C. Museums <sup>(2)</sup>	571,415	540,118	-5.5%
D. Archaeological sites	1,390,057	1,227,793	-11.7%
<b>III. VISITORS WITH FREE ADMISSION TICKETS</b>			
	2024	2025	Change 2025/2024
<b>Total number of visitors with free admission ticket (E+F)</b>	<b>546,977</b>	<b>636,685</b>	<b>16.4%</b>
E. Museums <sup>(2)</sup>	181,592	218,826	20.5%
F. Archaeological sites	365,385	417,859	14.4%
<b>IV. RECEIPTS (euros)</b>			
	2024	2025	Change 2025/2024
<b>Total Receipts (G+H)<sup>(4)</sup></b>	<b>22,840,530</b>	<b>32,831,666</b>	<b>43.7%</b>
G. Museums <sup>(2)</sup>	5,790,684	7,967,263	37.6%
H. Archaeological sites	17,049,846	24,864,403	45.8%

<sup>(1)</sup> Flat rate ticket, valid both for the museum and the archaeological site.

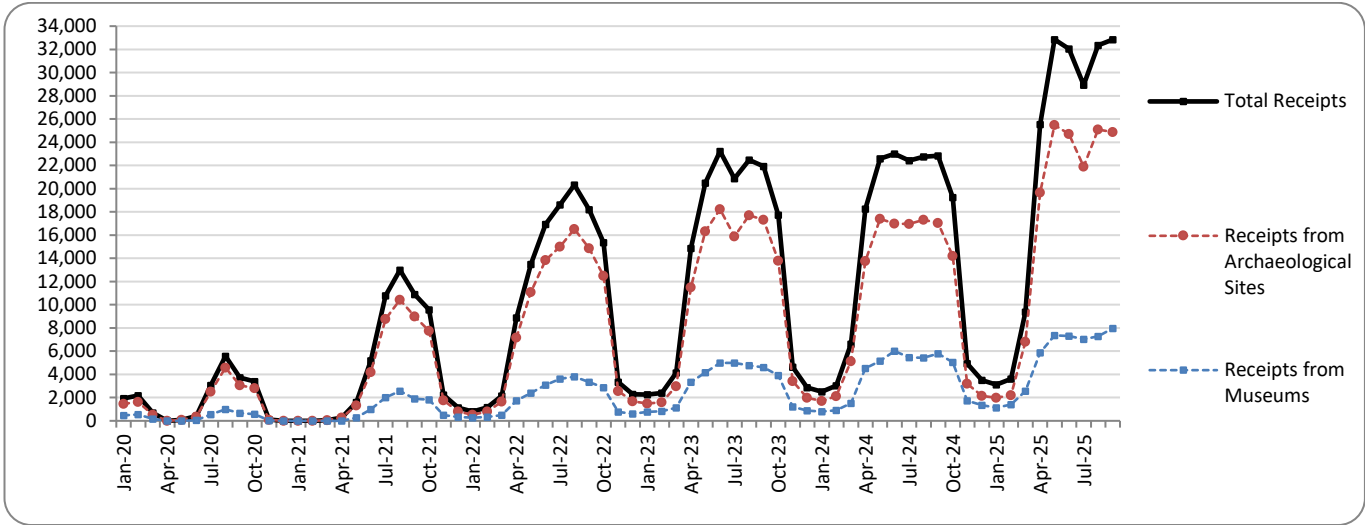
<sup>(2)</sup> Revised data, due to the transmission of updated data from administrative sources.

<sup>(3)</sup> Since April 2024, it has been possible to purchase tickets online from the museums of Ancient Olympia and Delphi, with the possibility of visiting the corresponding archaeological site, without it being possible to distinguish between museum and archaeological site visits.

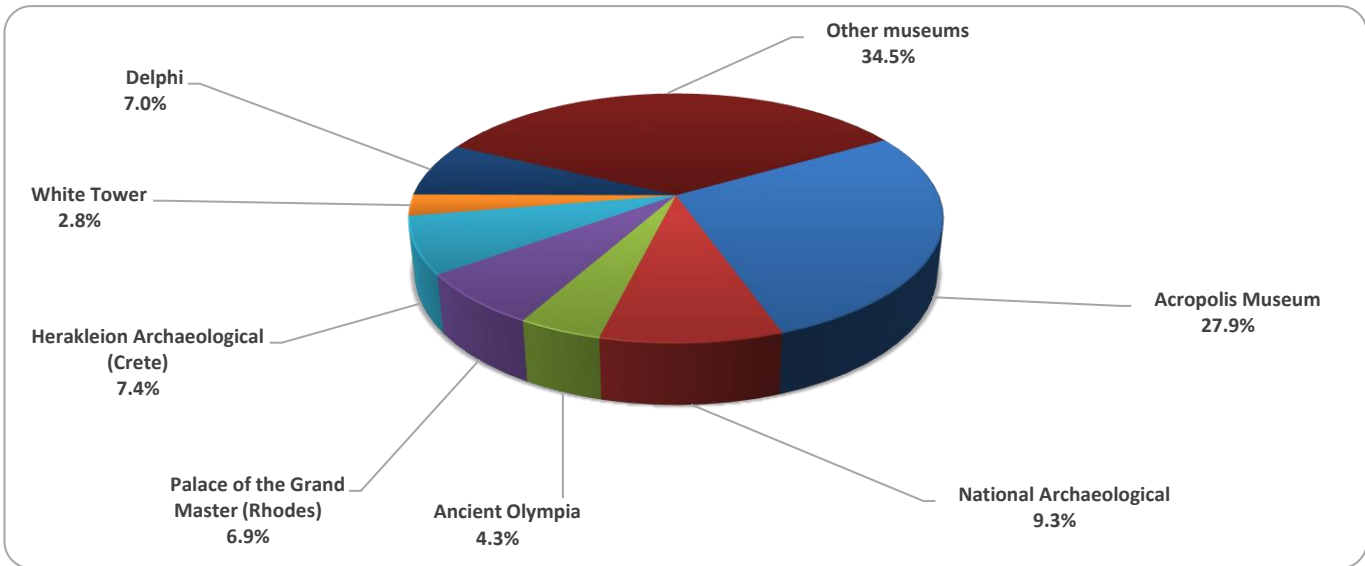
<sup>(4)</sup> Pursuant to the provisions of Joint Ministerial Decision 117624 (Official Journal 1968/issue B/29-03-24), as of 01/04/2025 a new pricing policy to visits to museums and archaeological sites, is in force.

The following graphs depict the evolution of the receipts of Museums and Archaeological Sites (Graph 2), as well as the number of visitors by Museum (Graph 3) and by Archaeological Site (Graph 4).

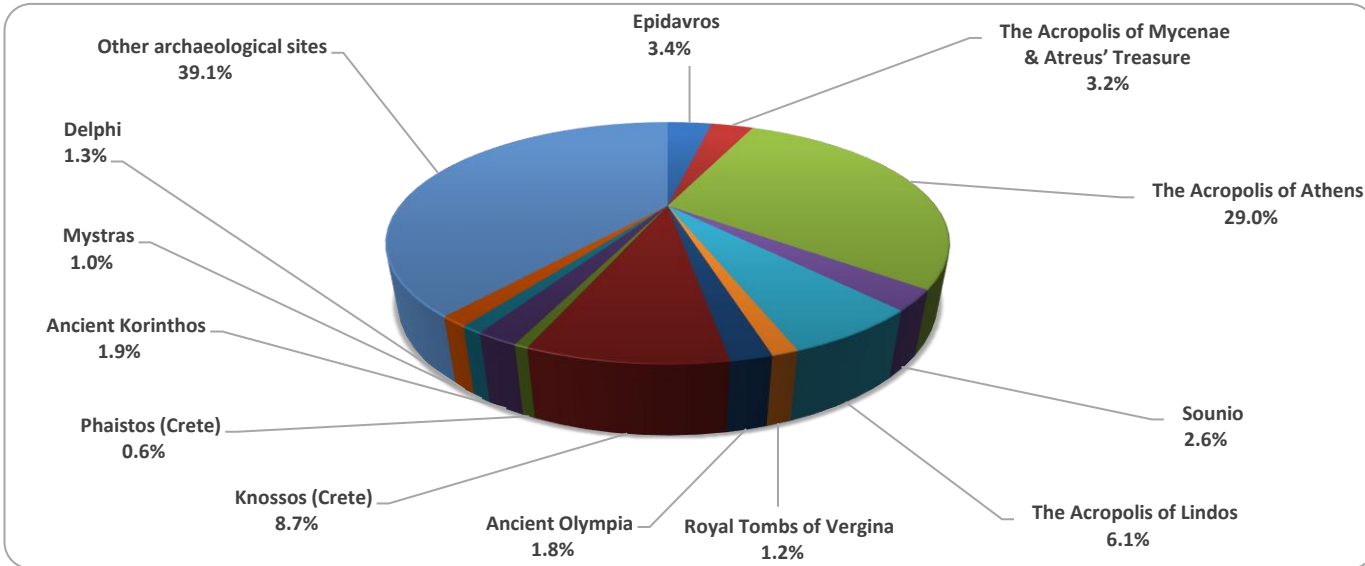
**Graph 2: Receipts from Museums and Archaeological Sites (January 2020 – September 2025)**  
(in thousand euro)



**Graph 3: Percentage distribution of visitors by Museum, September 2025**



**Graph 4: Percentage distribution of visitors by Archaeological site, September 2025**



**TABLE 2: VISITORS OF MUSEUMS AND ARCHAEOLOGICAL SITES - TOTAL RECEIPTS**  
(2023, 2024, JANUARY - SEPTEMBER 2024, 2025)

<b>I. VISITORS</b>					
Museums and Archaeological sites	2023	2024	JANUARY-SEPTEMBER		change 2025/2024
			2024	2025	
<b>Total number of visitors (A+B)</b>	<b>19,210,752</b>	<b>20,661,857</b>	<b>16,976,974</b>	<b>16,378,787</b>	<b>-3.5%</b>
<b>A. Museums (C+E)</b>	<b>5,801,812</b>	<b>6,651,911</b>	<b>5,373,752</b>	<b>5,337,194</b>	<b>-0.7%</b>
Acropolis Museum <sup>(2)</sup>	1,900,950	1,994,279	1,618,952	1,598,211	-1.3%
National Archaeological	642,318	642,956	515,167	527,417	2.4%
Ancient Olympia <sup>(3)</sup>	85,410	286,519	240,678	248,514	3.3%
Palace of the Grand Master (Rhodes) <sup>(2)</sup>	342,607	370,138	303,974	249,243	-18.0%
Herakleion Archaeological (Crete)	294,839	379,363	319,976	320,772	0.2%
White Tower	259,775	239,767	181,594	169,323	-6.8%
Delphi <sup>(3)</sup>	203,445	445,188	359,161	379,434	5.6%
Other museums	2,072,468	2,293,701	1,834,250	1,844,280	0.5%
<b>B. Archaeological Sites (D+F)</b>	<b>13,408,940</b>	<b>14,009,946</b>	<b>11,603,222</b>	<b>11,041,593</b>	<b>-4.8%</b>
Epidavros <sup>(1)</sup>	525,982	548,971	454,653	441,200	-3.0%
The Acropolis of Mycenae & Atreus' Treasure	510,507	547,361	452,169	413,427	-8.6%
The Acropolis of Athens	3,958,405	4,557,693	3,780,534	3,848,862	1.8%
Sounio	393,927	421,556	343,934	309,663	-10.0%
The Acropolis of Lindos	629,089	702,363	591,529	503,211	-14.9%
Royal Tombs of Vergina	202,122	244,013	198,678	148,959	-25.0%
Ancient Olympia <sup>(3)</sup>	481,211	301,987	256,415	228,633	-10.8%
Knossos (Crete)	959,110	1,010,006	855,171	820,587	-4.0%
Phaistos (Crete)	79,934	84,637	69,620	51,263	-26.4%
Ancient Korinthos <sup>(1)</sup>	210,465	253,085	194,007	197,146	1.6%
Mystras <sup>(1)</sup>	151,508	153,789	123,945	112,027	-9.6%
Delphi <sup>(3)</sup>	482,293	292,619	243,786	172,695	-29.2%
Other archaeological sites	4,824,387	4,891,866	4,038,781	3,793,920	-6.1%
<b>II. VISITORS WHO PAID TICKET</b>					
	2023	2024	JANUARY-SEPTEMBER		change 2025/2024
			2024	2025	
<b>Total number of visitors who paid ticket (C+D)</b>	<b>13,614,885</b>	<b>14,869,892</b>	<b>12,221,290</b>	<b>11,282,858</b>	<b>-7.7%</b>
C. Museums <sup>(2)</sup>	3,690,912	4,489,241	3,660,103	3,463,914	-5.4%
D. Archaeological sites	9,923,973	10,380,651	8,561,187	7,818,944	-8.7%
<b>III. VISITORS WITH FREE ADMISSION TICKETS</b>					
	2023	2024	JANUARY-SEPTEMBER		change 2025/2024
			2024	2025	
<b>Total number of visitors with free admission ticket (E+ F)</b>	<b>5,595,867</b>	<b>5,791,965</b>	<b>4,755,684</b>	<b>5,095,929</b>	<b>7.2%</b>
E. Museums	2,110,900	2,162,670	1,713,649	1,873,280	9.3%
F. Archaeological sites	3,484,967	3,629,295	3,042,035	3,222,649	5.9%
<b>IV. RECEIPTS (euros)</b>					
	2023	2024	JANUARY-SEPTEMBER		change 2025/2024
			2024	2025	
<b>Total Receipts (G+H) <sup>(4)</sup></b>	<b>157,947,917</b>	<b>171,680,632</b>	<b>144,004,993</b>	<b>200,664,866</b>	<b>39.3%</b>
G. Museums <sup>(2)</sup>	35,712,861	43,688,040	35,575,954	47,966,053	34.8%
H. Archaeological sites	122,235,056	127,992,592	108,429,039	152,698,813	40.8%

<sup>(1)</sup> Until March 2025, a single ticket is valid for both the museum and the archaeological site.

<sup>(2)</sup> Revised data, due to the transmission of updated data from administrative sources.

<sup>(3)</sup> Since April 2024, it has been possible to purchase tickets online from the museums of Ancient Olympia and Delphi, with the possibility of visiting the corresponding archaeological site, without it being possible to distinguish between museum and archaeological site visits

<sup>(4)</sup> Pursuant to the provisions of Joint Ministerial Decision 117624 (Official Journal 1968/issue B/29-03-24), as of 01/04/2025 a new pricing policy to visits to museums and archaeological sites, is in force.

## EXPLANATORY NOTES

<b>Survey on Museums and Archaeological Sites Attendance</b>	<p>The Survey on Museums and Archaeological Sites Attendance has been producing results since 1970. The survey collects data from the Hellenic Organization of Cultural Resources Development (HOCRED), supervised by the Ministry of Culture, on the number of visitors and the receipts from the tickets sold in the Museums and Archaeological sites of the country.</p> <p>The corresponding data for the Acropolis Museum is available from December 2009 onwards.</p> <p>Pursuant to the provisions of Joint Ministerial Decision 117624 (Official Journal 1968/issue B/29-03-24), as 01/04/2025 a new pricing policy shall apply to visits to museums and archaeological sites.</p>
<b>Legal Framework</b>	<p>The survey is conducted since 1970 on a regular basis and it produces results on a monthly and yearly basis, in compliance with the Joint Ministerial Decision 15189/B379/73.</p>
<b>Reference Period</b>	<p>01/09/2025 - 30/09/2025</p>
<b>Methodology and Definitions</b>	<p>The survey is conducted on a monthly basis from data mainly collected from the Hellenic Organization of Cultural Resources Development (HOCRED), supervised by the Ministry of Culture, on the number of visitors and the receipts from the tickets sold in the Museums and Archaeological sites of the Country. ELSTAT tabulates and presents the data for the whole of the Country, by month and by year.</p>
<b>References</b>	<p>More information on the Survey on Museums and Archaeological Sites Attendance and detailed time series are available on: <a href="http://www.statistics.gr/en/statistics/-/publication/SCI21/">http://www.statistics.gr/en/statistics/-/publication/SCI21/</a></p>