



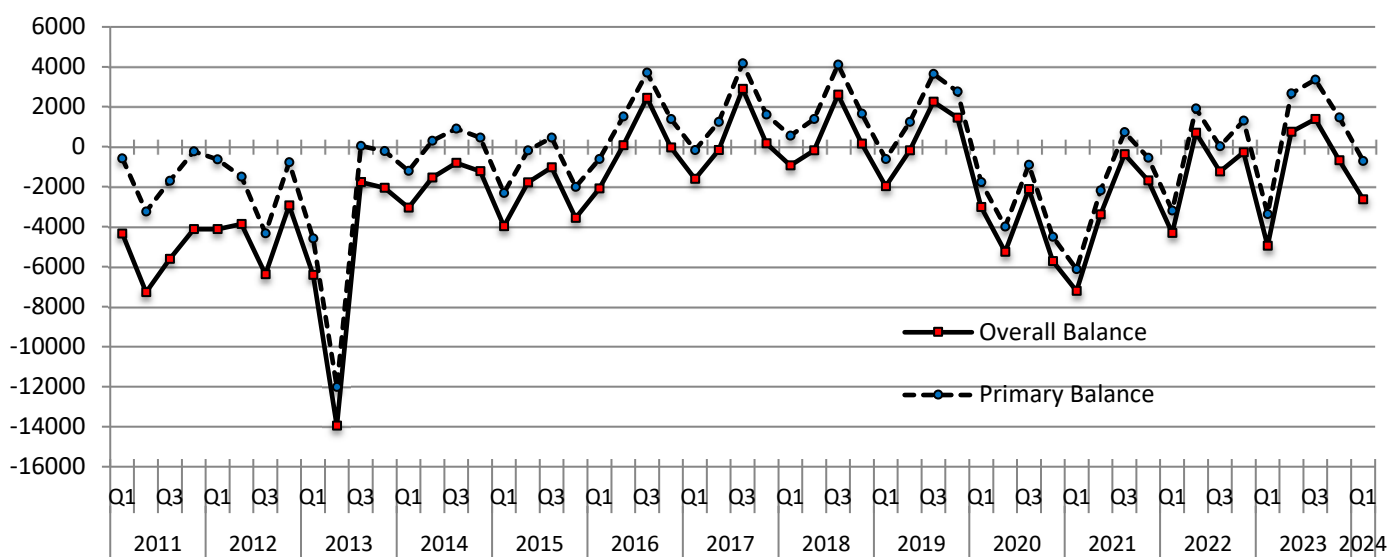
Quarterly Non-Financial Accounts of General Government 1st Quarter 2024 (Provisional data)

The Hellenic Statistical Authority (ELSTAT) announces the quarterly non-financial accounts of General Government for the first quarter of 2024 (Table 1 & Table 2) as well as data on General Government debt at the end of that period (Table 3). These data have been produced on the basis of the Regulation ESA 2010 (549/2013) for the System of National Accounts, which became obligatory as of 01.09.2014.

Since the first quarter of 2009, the quarterly non-financial accounts of General Government have been compiled by ELSTAT based mainly on direct data sources. The data are compiled in full consistency with the European System of Accounts - ESA2010. It should be noted that the methods used to compile data on a quarterly basis are consistent with the methods used to compile the annual data.

The quarterly non-financial accounts of General Government provide information on the aggregates constituting General Government revenue (taxes, social contributions, capital transfers, etc) and expenditure (compensation of employees, intermediate consumption, social benefits, interest payments, etc).

Graph 1: Overall and Primary Balance of General Government (in million EUR)



Information on methodological issues:

Division of National Accounts
Section of General Government Accounts
Head of Section: Konstantinos Chrissis
Tel: +30 213 135 2079
Email: k.chrysis@statistics.gr

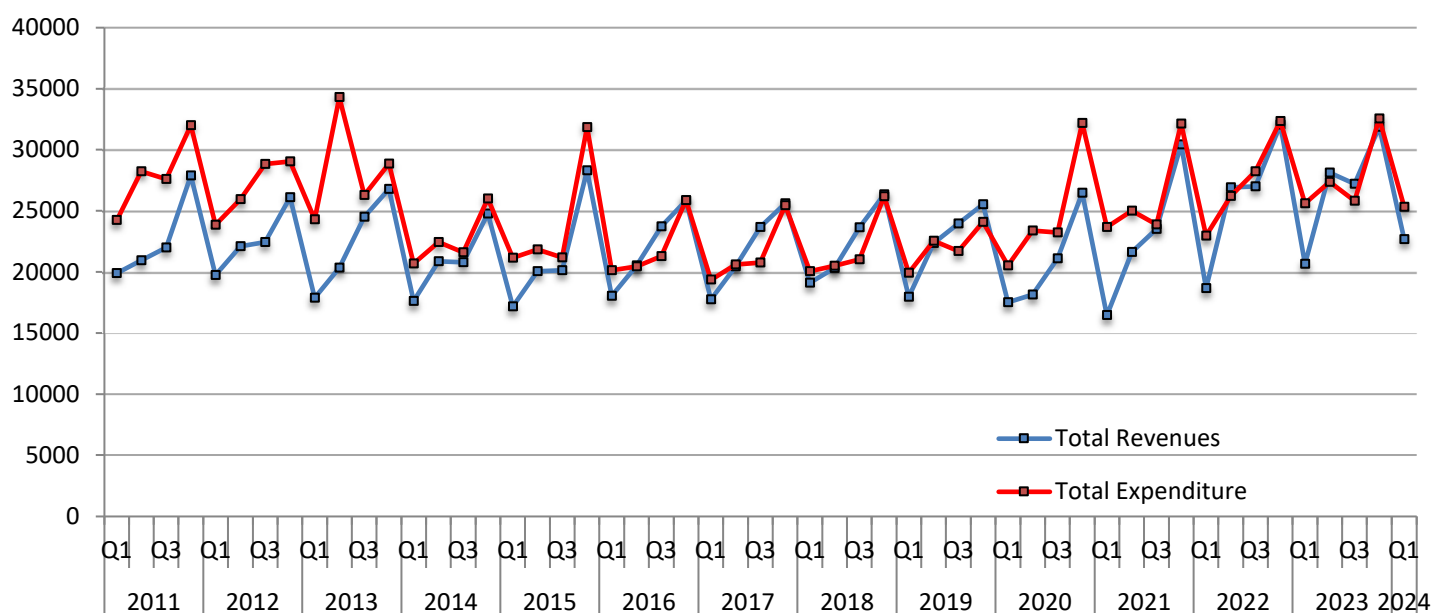
Information for data provision:

Tel: +30 213 135 2022, 2308, 2310
Email: data.dissem@statistics.gr

**TABLE 1: Quarterly non-financial accounts of General Government
2022 Q1 – 2024 Q1 (million EUR)**

ITEMS	2022				2023				2024
	Q1	Q2	Q3	Q4	Q1	Q2	Q3	Q4	Q1
Total Revenue	18,653	26,908	26,991	32,056	20,652	28,113	27,212	31,858	22,681
Taxes on production and imports	7,269	9,548	11,812	10,824	7,838	9,942	10,189	10,419	7,732
Taxes on income and property	2,947	5,999	4,325	6,429	3,323	7,142	5,933	6,876	3,825
Social contributions	6,557	7,416	6,916	8,152	6,761	7,191	7,449	7,822	7,462
Other	1,595	2,762	2,866	3,881	2,233	3,012	2,499	3,896	2,439
Capital transfers	285	1,183	1,072	2,770	497	826	1,142	2,845	1,223
Total Expenditure	22,968	26,212	28,235	32,336	25,610	27,363	25,824	32,546	25,317
Primary expenditure	21,846	25,004	26,973	30,758	24,029	25,453	23,859	30,398	23,398
Compensation of employees	5,506	5,662	5,654	5,918	5,675	5,874	5,837	6,081	5,971
Social benefits	9,973	10,769	10,839	11,720	11,421	11,375	10,723	12,399	11,390
Goods and Services	2,070	2,866	2,809	3,835	2,201	2,979	2,703	4,165	1,966
Subsidies	1,315	2,426	4,219	3,595	1,464	773	946	839	700
Other current transfers	696	726	775	870	812	726	720	1,015	713
Capital transfers	2,286	2,555	2,677	4,820	2,456	3,726	2,930	5,899	2,658
Interest	1,122	1,208	1,262	1,578	1,581	1,910	1,965	2,148	1,919
Primary Balance (excluding interest)¹	-3,193	1,904	18	1,298	-3,377	2,660	3,353	1,460	-717
Overall Balance	-4,315	696	-1,244	-280	-4,958	750	1,388	-688	-2,636
Memorandum Item:									
Support to financial institutions²	-111	-115	-122	-126	-166	-515	-158	-160	-156

Graph 2: Total Revenues and Expenditure of General Government (in million EUR)



¹ General Government primary balance is defined here as ESA 2010 General Government balance minus interest expenditure of General Government entities to other sectors. It differs from the definition of primary balance used under the Economic Adjustment Program for Greece.

² Sign is negative when expenditures of the support exceed revenues. When the impact of the support to financial institutions is positive for the General Government balance, this is due to the fees accruing on the inter-bank lending guarantees and the bond loan scheme, and the revenues from bank preference shares being greater than the expenditures accrued.

TABLE 2: Quarterly non-financial accounts of General Government
2022 Q1–2024 Q1 - Percentage contribution

ITEMS	2022				2023				2024
	Q1	Q2	Q3	Q4	Q1	Q2	Q3	Q4	Q1
As percentage of Total Revenues									
Taxes on production and imports	39.0	35.5	43.8	33.8	38.0	35.4	37.4	32.7	34.1
Taxes on income and property	15.8	22.3	16.0	20.1	16.1	25.4	21.8	21.6	16.9
Social contributions	35.2	27.6	25.6	25.4	32.7	25.6	27.4	24.6	32.9
Other	8.6	10.3	10.6	12.1	10.8	10.7	9.2	12.2	10.8
Capital transfers	1.5	4.4	4.0	8.6	2.4	2.9	4.2	8.9	5.4
As percentage of Total Expenditure									
Primary expenditure									
Compensation of employees	95.1	95.4	95.5	95.1	93.8	93.0	92.4	93.4	92.4
Social benefits	24.0	21.6	20.0	18.3	22.2	21.5	22.6	18.7	23.6
Goods and Services	43.4	41.1	38.4	36.2	44.6	41.6	41.5	38.1	45.0
Subsidies	9.0	10.9	9.9	11.9	8.6	10.9	10.5	12.8	7.8
Other current transfers	5.7	9.3	14.9	11.1	5.7	2.8	3.7	2.6	2.8
Capital transfers	3.0	2.8	2.7	2.7	3.2	2.7	2.8	3.1	2.8
Interest	10.0	9.7	9.5	14.9	9.6	13.6	11.3	18.1	10.5
Interest	4.9	4.6	4.5	4.9	6.2	7.0	7.6	6.6	7.6

Graph 3: Total Revenues and Expenditure of General Government by category (in million EUR)

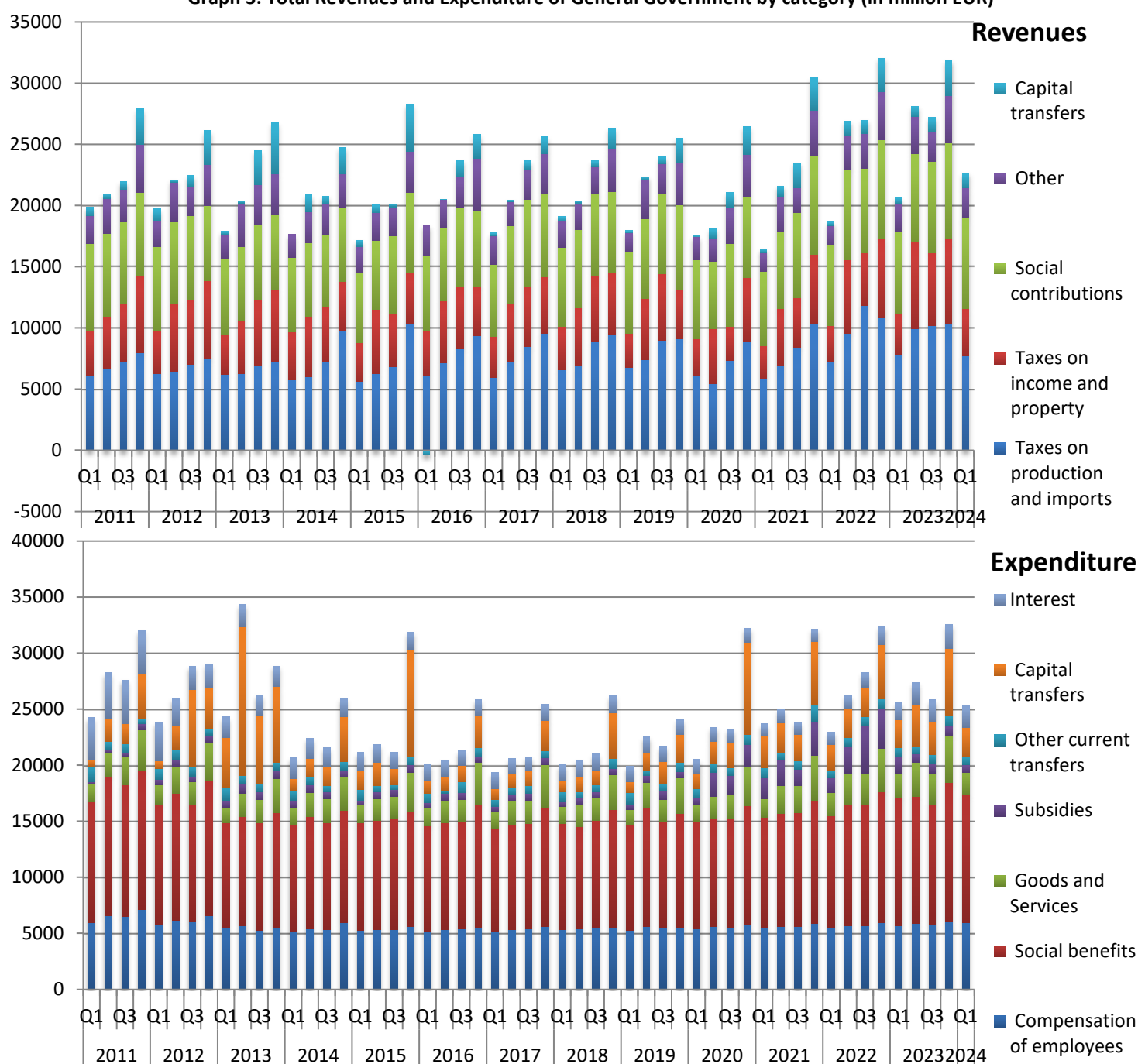
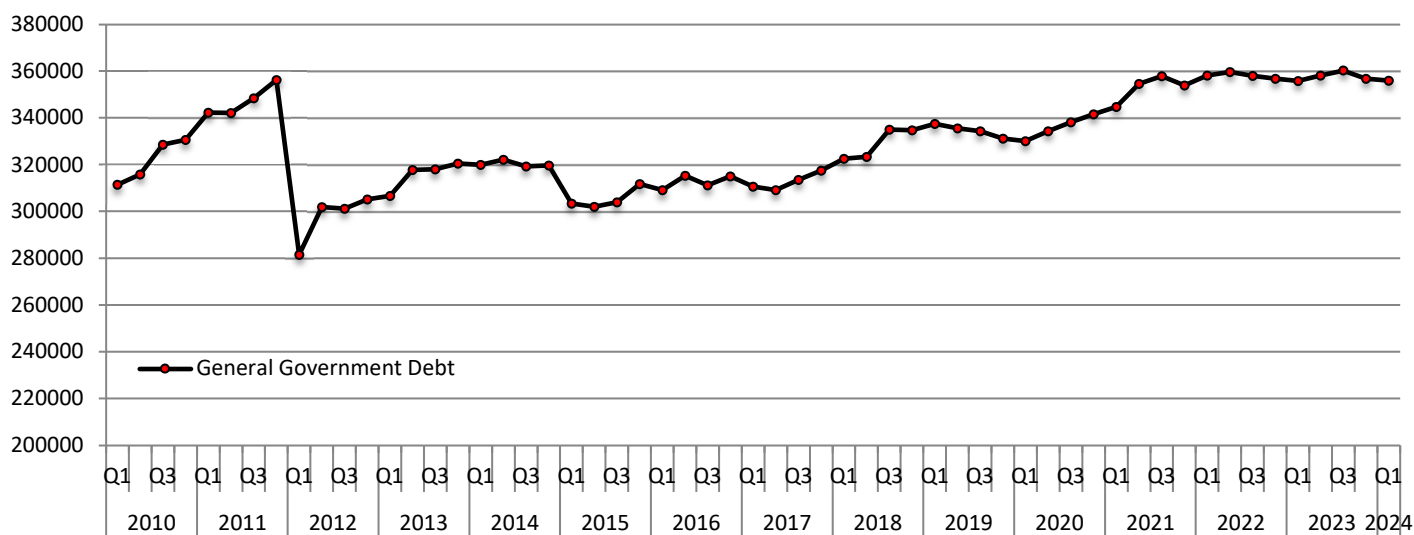


Table 3 below presents the evolution of the consolidated General Government Debt. The analysis of Debt in the categories currency and deposits, securities other than shares and loans, short-term and long-term, is according to the European System of Accounts (ESA2010). It should be noted that the information on debt is presented as the stock of debt at the end of each reference period.

**TABLE 3: Quarterly General Government Debt
2022 Q1 – 2024 Q1 (million EUR)**

	2022				2023				2024
	Q1	Q2	Q3	Q4	Q1	Q2	Q3	Q4	Q1
Nominal value of debt outstanding at end of quarter	358,161	359,586	357,925	356,796	355,732	358,137	360,275	356,695	355,947
Currency and deposits	6,829	7,136	7,467	7,248	6,890	6,850	7,150	7,239	7,002
Debt Securities	84,043	86,678	85,211	85,246	85,502	88,941	91,321	92,039	94,931
Short-term (<1 year)	10,948	11,251	11,181	11,089	11,168	11,227	11,208	11,339	10,741
Long-term (>1 year)	73,095	75,427	74,030	74,157	74,334	77,714	80,113	80,700	84,190
Loans	267,289	265,772	265,247	264,302	263,340	262,346	261,804	257,417	254,014
Short-term	3,778	3,647	3,800	5,391	4,052	3,755	3,684	2,686	766
Long-term	263,511	262,125	261,447	258,911	259,288	258,591	258,120	254,731	253,248

Graph 4: General Government Debt - quarterly (in million EUR)



References

Detailed table is available on the website of ELSTAT:
<http://www.statistics.gr/en/statistics/-/publication/SEL05/->