



**SHORT-TERM INDICES OF EMPLOYMENT
(PERSONS EMPLOYED, HOURS WORKED, GROSS WAGES AND SALARIES)
IN MAIN SECTIONS OF THE ECONOMY¹**

Revised Data

3rd Quarter 2025, period 1st Quarter 2022 – 2nd Quarter 2025

The Hellenic Statistical Authority (ELSTAT) announces the revised Short-term Indices of Employment (Persons Employed, Hours Worked and Gross Wages and Salaries), in the twelve main sections of the economy and in the aggregates of Industry (BTE) and Services (HTNXX) for the 3rd quarter 2025 and the period 1st quarter 2022 - 2nd quarter 2025 (without calendar or seasonal adjustment).

The evolution of the Short-term Indices of Employment in the 3rd quarter 2025 in comparison to the corresponding indices of the 3rd quarter 2024 are as follows:

NACE Rev. 2	Section of economic activity	Annual rates of change (%) (2025/2024)		
		Index of Persons Employed	Index of Hours Worked	Index of Gross Wages and Salaries
B	Mining and Quarrying	2.1	2.2	4.8
C	Manufacturing	-1.7	-1.2	6.6
D	Electricity, Gas, Steam and Air Conditioning Supply	-2.4	-2.4	8.7
E	Water Supply, Sewerage, Waste Management and Remediation Activities	-4.7	-4.7	-2.9
BTE	Mining and Quarrying, Manufacturing, Electricity Supply and Water Supply (Total Industry)	-1.7	-1.3	6.6
F	Construction	-1.7	-1.2	10.0
G	Wholesale and Retail Trade, Repair of Motor Vehicles and Motorcycles	-1.3	-0.3	8.0
H	Transportation and Storage	-4.3	-4.0	7.0
I	Accommodation and Food Service Activities	-12.1	-7.6	3.5
J	Information and Communication	-1.5	-0.5	8.3
L	Real estate activities	-3.3	-2.0	3.0
M	Professional, Scientific and Technical Activities	-2.4	-1.6	6.3
N	Administrative and Support Service Activities	-5.2	-5.3	6.9
HTNXX	Transportation and Storage, Accommodation and Food Service Activities, Information and Communication, Professional, Scientific and Technical Activities, Administrative and Support Service Activities (Total Services)	-7.4	-4.0	6.1

Information on methodological issues:

Business Statistics Division
Section of Manufacture-Construction Indices and Industrial Products
Head of the Section: Evridiki Vlachokosta
Section of Trade and Services Indices
Head of the Section: Thomas Konstantinos
Tel: +30 213 135 2056, 2048

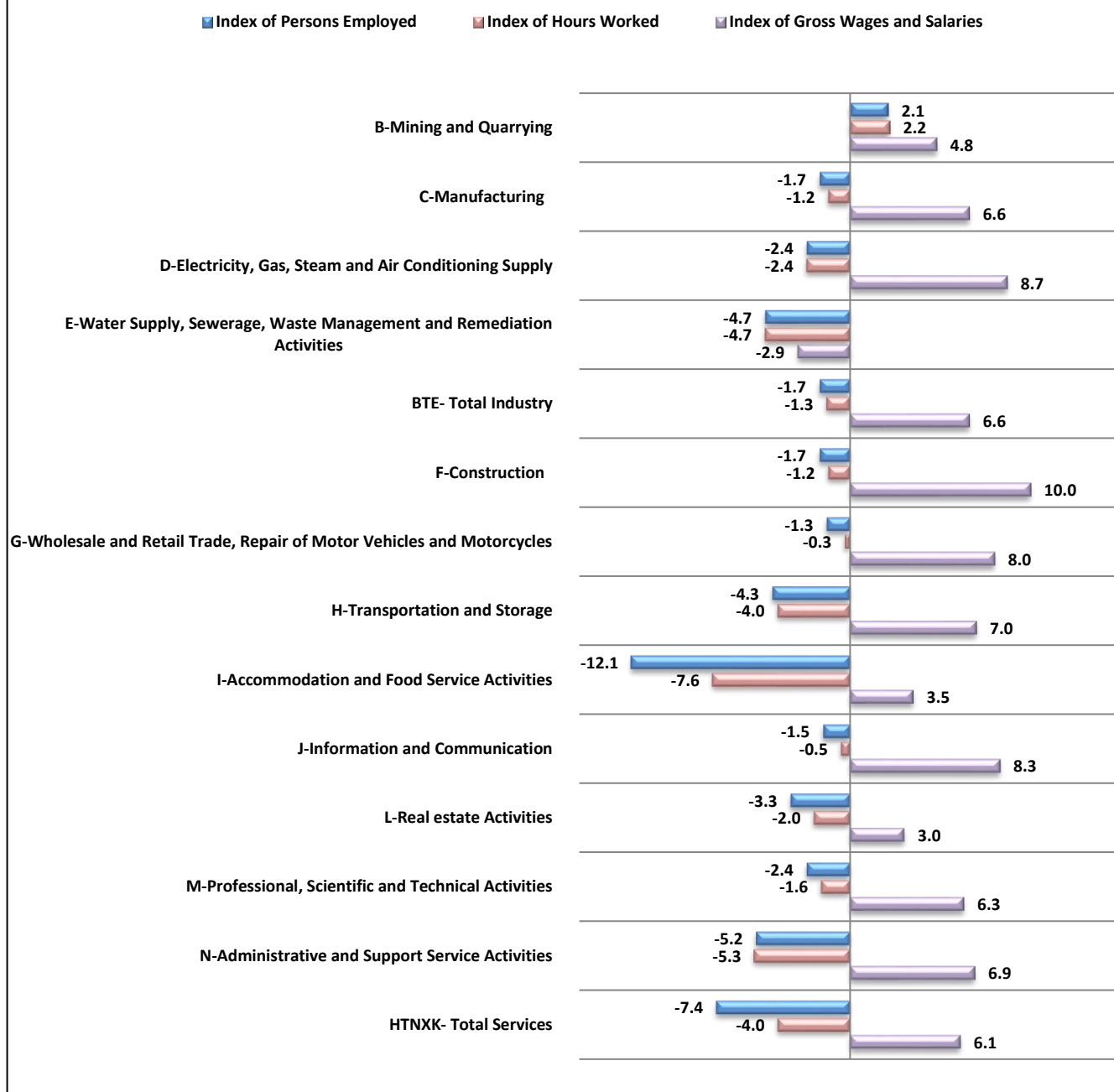
E-mail: e.vlachokosta@statistics.gr, k.thomas@statistics.gr

Information on data provision:

Tel: +30 213 135 2022, 2308, 2310
E-mail: data.dissem@statistics.gr

¹ It refers to twelve main sections of the statistical classification of economic activities NACE Rev. 2 of EU and to the aggregates of BTE as Total Industry B to E (Mining and Quarrying, Manufacturing, Electricity Supply and Water Supply) and HTNXX as Total Services H to N (except sector K and M701, M72 and M75).

Graph 1. Annual rates of change (%) (3rd quarter 2025/2024)



In the following table, the Short-term Indices of Persons Employed, Hours Worked and Gross Wages and Salaries (without calendar or seasonal adjustment) are presented broken down in the twelve main sections of the NACE Rev. 2 statistical classification of economic activities and in the aggregates of BTE as Total Industry sections B to E (Mining and Quarrying, Manufacturing, Electricity Supply and Water Supply) and HTNXK as Total Services sections H to N (except section K and M701, M72 and M75). Furthermore, data on the annual and quarterly rates of change of each index are presented, for the years 2024 - 2025 (3rd quarter).

The indices are available on the ELSTAT's website: <http://www.statistics.gr/el/statistics/-/publication/DKT03/->

In the Graphs 2 to 4 that follow, the evolution over time of the Indices of Persons Employed, Hours Worked and Gross Wages and Salaries by NACE Rev. 2 section, for the years 2022 – 2025 (3rd quarter) is shown.

Table: Short-term Indices of Persons Employed, Hours Worked and Gross Wages and Salaries, annual and quarterly rates of change in main sections of economy, period: 1st quarter 2022 – 3rd quarter 2025

(without calendar or seasonal adjustment)

Base year: 2021 = 100.0

Year, quarter		Index of Persons Employed			Index of Hours Worked			Index of Gross Wages and Salaries		
		Index	Annual rates of change (%)	Quarterly rates of change (%)	Index	Annual rates of change (%)	Quarterly rates of change (%)	Index	Annual rates of change (%)	Quarterly rates of change (%)
Section B – Mining and Quarrying										
2024	Q1	99.3	5.2	-0.8	109.5	5.1	-1.2	100.0	10.5	3.2
	Q2	100.1	3.4	0.8	110.3	3.0	0.7	138.7	8.2	38.7
	Q3	100.5	2.5	0.4	110.8	1.8	0.5	127.0	13.4	-8.5
	Q4	101.9	1.9	1.4	112.4	1.4	1.4	139.4	43.9	9.8
Annual average		100.4	3.3		110.8	2.8		126.3	19.0	
2025	Q1	98.7	-0.5	-3.1	109.1	-0.4	-2.9	125.5	25.5	-9.9
	Q2	100.7	0.6	2.0	111.3	1.0	2.1	150.2	8.3	19.6
	Q3	102.6	2.1	1.9	113.3	2.2	1.7	133.0	4.8	-11.4
Section C - Manufacturing										
2024	Q1	106.0	0.6	-2.8	109.7	1.1	-2.7	102.3	11.0	-2.9
	Q2	108.8	1.5	2.6	112.8	2.0	2.8	129.3	9.3	26.4
	Q3	110.6	0.6	1.7	115.2	1.4	2.2	123.2	8.3	-4.7
	Q4	109.0	0.0	-1.4	113.7	0.8	-1.3	120.8	14.7	-1.9
Annual average		108.6	0.7		112.9	1.3		118.9	10.8	
2025	Q1	104.0	-1.9	-4.6	108.7	-1.0	-4.4	111.4	8.9	-7.8
	Q2	106.3	-2.3	2.2	110.9	-1.6	2.1	139.1	7.6	24.9
	Q3	108.7	-1.7	2.3	113.8	-1.2	2.6	131.3	6.6	-5.6
Section D - Electricity, Gas, Steam and Air Conditioning Supply										
2024	Q1	92.6	-5.1	-5.8	99.7	-5.3	-5.8	89.5	24.1	3.4
	Q2	93.6	-2.7	1.1	100.8	-2.9	1.0	103.5	-1.7	15.7
	Q3	93.7	-3.8	0.1	100.9	-4.0	0.1	95.6	2.7	-7.7
	Q4	94.2	-4.2	0.5	101.4	-4.3	0.6	92.0	6.3	-3.8
Annual average		93.5	-3.9		100.7	-4.1		95.1	7.9	
2025	Q1	90.8	-1.9	-3.5	97.9	-1.8	-3.5	96.3	7.7	4.8
	Q2	91.1	-2.7	0.3	98.2	-2.6	0.3	126.2	21.9	31.0
	Q3	91.4	-2.4	0.3	98.4	-2.4	0.2	103.9	8.7	-17.7

Table: Short-term Indices of Persons Employed, Hours Worked and Gross Wages and Salaries, annual and quarterly rates of change in main sections of economy, period: 1st quarter 2024 – 3rd quarter 2025 (continued)

(without calendar or seasonal adjustment)

Base year: 2021 = 100.0

Year, quarter		Index of Persons Employed			Index of Hours Worked			Index of Gross Wages and Salaries		
		Index	Annual rates of change (%)	Quarterly rates of change (%)	Index	Annual rates of change (%)	Quarterly rates of change (%)	Index	Annual rates of change (%)	Quarterly rates of change (%)
Section E - Water Supply, Sewerage, Waste Management and Remediation Activities										
2024	Q1	92.8	-6.8	-3.9	95.0	-6.4	-3.4	97.1	-1.8	-0.8
	Q2	97.3	-6.6	4.9	99.3	-6.4	4.6	105.5	3.1	8.6
	Q3	96.6	-6.5	-0.7	97.9	-6.4	-1.4	105.9	4.4	0.4
	Q4	94.7	-1.9	-2.0	96.6	-1.8	-1.4	105.4	7.7	-0.5
Annual average		95.3	-5.4		97.2	-5.3		103.5	3.4	
2025	Q1	89.7	-3.3	-5.2	91.8	-3.3	-4.9	100.6	3.6	-4.5
	Q2	94.2	-3.1	5.0	96.1	-3.2	4.7	103.8	-1.6	3.1
	Q3	92.0	-4.7	-2.3	93.3	-4.7	-2.9	102.8	-2.9	-0.9
BTE – Total Industry										
2024	Q1	104.7	0.1	-3.0	108.7	0.5	-2.9	100.6	12.1	-2.0
	Q2	107.3	1.1	2.5	111.5	1.5	2.6	125.6	7.7	24.8
	Q3	108.9	0.2	1.5	113.6	0.9	1.9	119.2	7.6	-5.0
	Q4	107.5	-0.3	-1.3	112.4	0.4	-1.1	117.1	14.1	-1.8
Annual average		107.1	0.3		111.5	0.8		115.6	10.4	
2025	Q1	102.7	-1.9	-4.5	107.5	-1.1	-4.4	109.6	9.0	-6.4
	Q2	104.8	-2.3	2.1	109.7	-1.7	2.0	136.9	9.1	24.9
	Q3	107.1	-1.7	2.1	112.1	-1.3	2.3	127.1	6.6	-7.2
Section F – Construction										
2024	Q1	103.5	0.7	-4.8	100.7	1.9	-4.3	106.5	15.5	-7.2
	Q2	113.4	2.9	9.5	111.4	4.4	10.6	140.2	16.1	31.6
	Q3	118.2	3.8	4.2	116.1	5.7	4.3	142.4	15.6	1.6
	Q4	111.8	2.8	-5.4	109.2	3.8	-6.0	136.3	18.8	-4.2
Annual average		111.7	2.5		109.3	3.9		131.3	16.5	
2025	Q1	104.2	0.7	-6.8	101.2	0.5	-7.4	119.3	12.1	-12.5
	Q2	113.8	0.4	9.2	111.9	0.5	10.6	157.0	12.0	31.6
	Q3	116.2	-1.7	2.1	114.7	-1.2	2.5	156.5	10.0	-0.3

Table: Short-term Indices of Persons Employed, Hours Worked and Gross Wages and Salaries, annual and quarterly rates of change in main sections of economy, period: 1st quarter 2024 – 3rd quarter 2025 (continued)

(without calendar or seasonal adjustment)

Base year: 2021 = 100.0

Year, quarter		Index of Persons Employed			Index of Hours Worked			Index of Gross Wages and Salaries		
		Index	Annual rates of change (%)	Quarterly rates of change (%)	Index	Annual rates of change (%)	Quarterly rates of change (%)	Index	Annual rates of change (%)	Quarterly rates of change (%)
Section G – Wholesale and Retail Trade, Repair of Motor Vehicles and Motorcycles										
2024	Q1	107.6	0.1	-2.8	107.2	1.0	-2.5	101.7	8.9	-3.9
	Q2	111.3	1.8	3.5	111.3	2.7	3.8	127.3	10.4	25.1
	Q3	112.5	1.1	1.1	113.1	2.2	1.6	119.8	8.9	-5.9
	Q4	112.4	1.6	-0.1	112.8	2.6	-0.2	119.3	12.8	-0.4
Annual average		110.9	1.2		111.1	2.1		117.0	10.2	
2025	Q1	106.5	-1.0	-5.3	107.2	0.0	-5.0	109.7	7.8	-8.1
	Q2	109.8	-1.3	3.1	111.1	-0.1	3.7	138.8	9.0	26.5
	Q3	111.1	-1.3	1.1	112.7	-0.3	1.4	129.4	8.0	-6.8
Section H – Transportation and Storage										
2024	Q1	105.3	0.9	-2.7	105.2	1.5	-2.5	104.5	7.5	-5.0
	Q2	109.8	2.0	4.2	109.3	2.2	3.9	130.1	9.1	24.5
	Q3	110.7	1.8	0.8	110.3	2.2	0.9	121.6	7.9	-6.5
	Q4	108.6	0.3	-1.9	108.4	0.5	-1.7	128.1	16.3	5.3
Annual average		108.6	1.2		108.3	1.6		121.1	10.2	
2025	Q1	102.5	-2.7	-5.7	102.2	-2.9	-5.8	116.0	11.0	-9.4
	Q2	106.8	-2.7	4.2	106.3	-2.7	4.1	141.9	9.0	22.3
	Q3	106.0	-4.3	-0.8	105.9	-4.0	-0.4	130.2	7.0	-8.3
Section I – Accommodation and Food Service Activities										
2024	Q1	85.1	-9.1	-16.4	93.0	-6.5	-21.7	101.6	13.3	-30.1
	Q2	114.2	-5.6	34.2	145.7	-5.3	56.6	182.4	8.3	79.5
	Q3	123.1	-5.9	7.7	165.5	-5.8	13.6	223.5	6.0	22.5
	Q4	96.3	-5.4	-21.8	112.7	-5.1	-31.9	162.0	11.4	-27.5
Annual average		104.7	-6.5		129.2	-5.7		167.4	9.7	
2025	Q1	76.9	-9.7	-20.2	85.3	-8.4	-24.4	106.3	4.6	-34.4
	Q2	99.6	-12.8	29.6	132.8	-8.9	55.7	191.7	5.1	80.4
	Q3	108.1	-12.1	8.5	153.0	-7.6	15.2	231.4	3.5	20.7

Table: Short-term Indices of Persons Employed, Hours Worked and Gross Wages and Salaries, annual and quarterly rates of change in main sections of economy, period: 1st quarter 2024 – 3rd quarter 2025 (continued)

(without calendar or seasonal adjustment)

Base year: 2021 = 100.0

Year, quarter		Index of Persons Employed			Index of Hours Worked			Index of Gross Wages and Salaries		
		Index	Annual rates of change (%)	Quarterly rates of change (%)	Index	Annual rates of change (%)	Quarterly rates of change (%)	Index	Annual rates of change (%)	Quarterly rates of change (%)
Section J - Information and Communication										
2024	Q1	106.8	-2.5	-4.2	111.7	-1.9	-4.3	111.8	11.1	0.8
	Q2	110.7	0.5	3.6	115.0	0.1	3.0	148.4	12.9	32.7
	Q3	111.4	2.1	0.7	116.2	1.9	1.0	136.7	8.5	-7.8
	Q4	114.9	3.0	3.1	119.8	2.7	3.1	129.4	16.6	-5.4
Annual average		110.9	0.8		115.7	0.7		131.6	12.3	
2025	Q1	106.7	-0.1	-7.1	112.4	0.6	-6.2	125.6	12.3	-2.9
	Q2	109.0	-1.5	2.1	114.9	-0.2	2.2	160.6	8.3	27.9
	Q3	109.8	-1.5	0.7	115.6	-0.5	0.7	148.1	8.3	-7.8
Section L - Real estate Activities										
2024	Q1	82.5	-7.1	-12.8	87.8	-5.2	-12.4	82.6	-4.1	-14.5
	Q2	97.1	-4.2	17.8	105.1	-3.3	19.8	118.4	-0.1	43.4
	Q3	97.6	-7.3	0.5	106.9	-6.0	1.7	117.1	0.1	-1.0
	Q4	87.8	-7.0	-10.0	94.2	-6.0	-11.9	120.6	24.8	3.0
Annual average		91.2	-6.4		98.5	-5.1		109.7	5.2	
2025	Q1	79.5	-3.6	-9.5	84.2	-4.0	-10.5	87.1	5.4	-27.8
	Q2	93.3	-4.0	17.3	102.0	-3.0	21.1	121.8	2.9	39.9
	Q3	94.3	-3.3	1.2	104.7	-2.0	2.7	120.7	3.0	-0.9
Section M - Professional, Scientific and Technical Activities										
2024	Q1	123.9	2.2	-2.0	126.7	2.9	-1.9	122.6	11.4	-4.5
	Q2	131.2	4.9	6.0	133.9	5.1	5.6	157.4	11.6	28.5
	Q3	133.3	5.1	1.6	136.3	5.1	1.8	151.8	12.3	-3.6
	Q4	132.6	4.9	-0.5	135.8	5.2	-0.4	147.8	15.2	-2.6
Annual average		130.2	4.3		133.2	4.5		144.9	12.6	
2025	Q1	123.9	0.0	-6.6	127.0	0.2	-6.5	137.4	12.1	-7.1
	Q2	128.2	-2.3	3.5	131.9	-1.4	3.9	171.4	8.9	24.8
	Q3	130.2	-2.4	1.5	134.2	-1.6	1.7	161.3	6.3	-5.9

Table: Short-term Indices of Persons Employed, Hours Worked and Gross Wages and Salaries, annual and quarterly rates of change in main sections of economy, period: 1st quarter 2024 – 3rd quarter 2025 (continued)

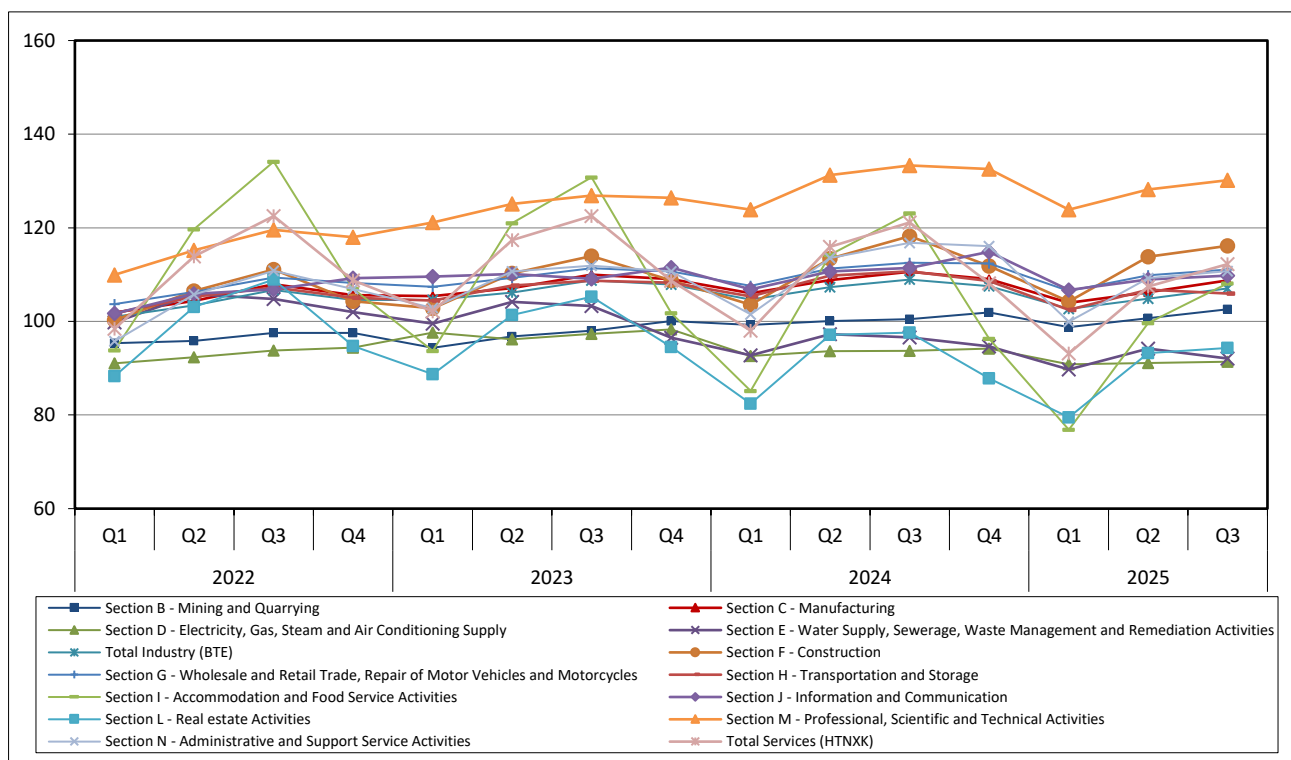
(without calendar or seasonal adjustment)

Base year: 2021 = 100.0

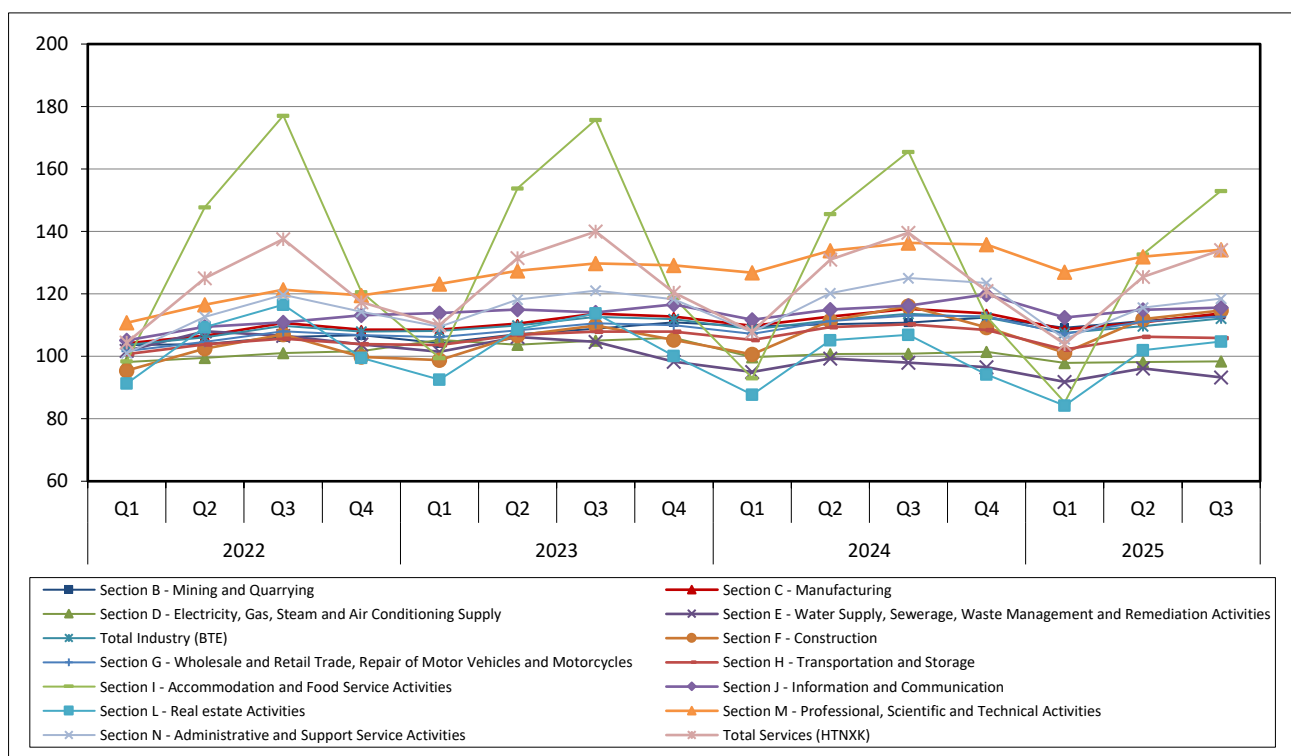
Year, quarter		Index of Persons Employed			Index of Hours Worked			Index of Gross Wages and Salaries		
		Index	Annual rates of change (%)	Quarterly rates of change (%)	Index	Annual rates of change (%)	Quarterly rates of change (%)	Index	Annual rates of change (%)	Quarterly rates of change (%)
Section N - Administrative and Support Service Activities										
2024	Q1	101.5	-1.3	-8.3	107.7	-1.6	-8.9	107.2	7.4	-11.0
	Q2	113.5	2.6	11.8	120.3	1.8	11.6	140.9	10.3	31.4
	Q3	116.8	4.3	2.9	125.1	3.3	4.0	140.7	9.5	-0.1
	Q4	116.1	4.9	-0.6	123.5	4.4	-1.3	137.6	14.2	-2.2
Annual average		112.0	2.6		119.1	2.0		131.6	10.3	
2025	Q1	100.0	-1.5	-13.9	105.6	-2.0	-14.5	119.7	11.6	-13.0
	Q2	109.2	-3.8	9.3	115.6	-3.9	9.5	153.4	8.9	28.1
	Q3	110.8	-5.2	1.4	118.5	-5.3	2.5	150.4	6.9	-1.9
HTNXK - Total Services										
2024	Q1	98.0	-4.0	-9.8	108.0	-1.8	-10.3	108.9	10.0	-12.2
	Q2	115.9	-1.3	18.2	131.0	-0.4	21.3	153.3	10.3	40.8
	Q3	121.2	-1.1	4.5	139.6	-0.3	6.6	158.6	8.7	3.5
	Q4	108.2	-0.5	-10.7	120.9	0.4	-13.4	142.0	14.5	-10.5
Annual average		110.8	-1.7		124.9	-0.5		140.7	10.9	
2025	Q1	93.1	-5.0	-13.9	103.9	-3.8	-14.1	119.6	9.8	-15.8
	Q2	107.5	-7.3	15.4	125.4	-4.2	20.7	165.2	7.8	38.2
	Q3	112.3	-7.4	4.4	134.0	-4.0	6.9	168.3	6.1	1.9

Note: The indices and the percentage changes are rounded up to one decimal digit when published. Any difference in the percentage changes is due to rounding.

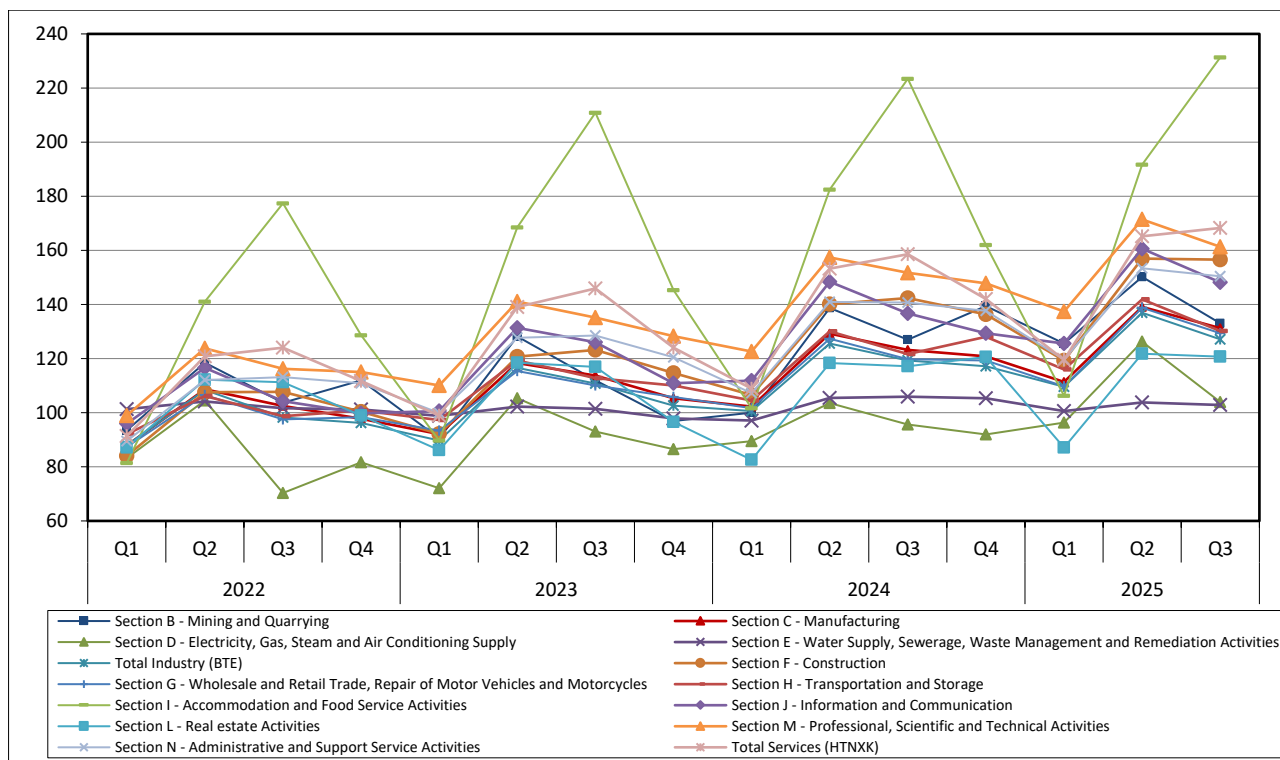
Graph 2. Evolution of the Index of Persons Employed in main sections of economy, (Base year: 2021=100.0):



Graph 3. Evolution of the Index of Hours Worked by Employees in main sections of economy, (Base year: 2021=100.0):



Graph 4. Evolution of the Index of Gross Wages and Salaries in main sections of economy, (Base year: 2021=100.0):



METHODOLOGICAL NOTES

General	The Short-term Indices of Employment (Persons Employed, Hours Worked and Gross Wages and Salaries) are quarterly indices in eleven main sections of economic activities B to E (Mining and Quarrying, Manufacturing, Electricity Supply and Water Supply), F (Construction), G (Trade), H to J, L and M (except M701, M72 and M75) to N (Services) of the statistical classification of economic activities NACE Rev. 2 of EU, with base year 2021=100.0.
Purpose of the indices	The purpose of the indices is to present the evolution of Persons Employed, Hours Worked by Employees and Gross Wages and Salaries on a quarterly basis in eleven main sections of economic activities B to E (Mining and Quarrying, Manufacturing, Electricity Supply and Water Supply), F (Construction), G (Trade), H to J, L and M (except M701, M72 and M75) to N (Services) of the statistical classification NACE Rev. 2.
Legal Framework	The Short-term Indices of Employment (Persons Employed, Hours Worked and Gross Wages and Salaries) are compiled in the framework of the implementation of Regulation (EU) No 2019/2152 of the European Parliament and of the Council on European business statistics, as well as Commission Implementing Regulation (EU) No 2020/1197 laying down technical specifications and arrangements pursuant to Regulation (EU) No 2019/2152. Finally, for the compilation of the aforementioned indices, Regulation (EC) No 1893/2006 of the European Parliament and of the Council establishing the statistical classification of economic activities NACE Rev. 2 is applied.
Geographical coverage	Greece, total.
Reference Period	Quarter.
Base year	2021=100.0.
Revision	<p>The revision of the Employment Indices with new base year (b.y.) 2021=100.0 was carried out within the framework of the implementation of Regulation (EU) 2020/1197, according to which short-term indices are revised every five (5) years, with a base year ending in 0 or 5, while due to the impact of the pandemic, the indices were announced on 13/12/2024, revised with the base year 2021. The purpose of the revision is to align the indices with the latest developments in the structure of employment in the sectors of economic activity.</p> <p>Since 2026, ELSTAT has been compiling the Employment Indices using administrative data, which are available through cooperation protocols with the Ministry of Labour and eEFKA. The main objective is to improve the accuracy and reliability of Short-Term Employment Indices and effectively simplify the production process by creating an integrated system for the regular quarterly calculation of these indices, covering all stages of production, including data receiving and storage, processing, validation, selection of final microdata and calculation of the indices. The Short-Term Employment Indices based on the assessment, processing and integration of available administrative data are revised from the 1st quarter of 2022 to the 3rd quarter of 2025, with the base year 2021=100.0.</p>
Definitions	<p>As Number of Persons Employed is defined the total number of persons employed in the enterprise, irrespectively of their status (owners, partners and their family members) and the nature of their work (managers, sales persons and auxiliary staff) and irrespectively of whether they work temporarily or seasonally, full-time or part-time employment, with or without remuneration.</p> <p>Hours Worked is defined the total number of hours actually worked in the enterprise by Employees during the reference quarter. It includes hours actually worked during regular working hours; hours worked overtime, whether paid or unpaid; hours worked during nights, Sundays or public holidays. It also includes the time which is spent at the place of work on tasks such as preparing the site and time corresponding to short periods of rest at the workplace. This variable excludes hours paid but not actually worked such as for annual leave, holidays and sickness leave.</p> <p>Wages and Salaries is defined the total remuneration, in cash or in kind, payable to all persons counted on the payroll, in return for work done.</p>
Statistical Classification	The statistical classification of economic activities NACE Rev. 2 of EU is used.

**Coverage of NACE Rev.2
sections of economic
activity**

B	Mining and Quarrying
C	Manufacturing
D	Electricity, Gas, Steam and Air Conditioning Supply
E	Water Supply, Sewerage, Waste Management and Remediation Activities
F	Construction
G	Wholesale and Retail Trade, Repair of Motor Vehicles and Motorcycles
H	Transportation and Storage
I	Accommodation and Food Service Activities
J	Information and Communication
L	Real estate Activities
M (except M701, M72 and M75)	Professional, Scientific and Technical Activities
N	Administrative and Support Service Activities

Calculation of the indices

The Short-term Indices of Employment are calculated by applying the chaining method. Firstly, the moving base index is calculated by comparing the estimated value (number of persons employed, hours worked, wages and salaries) for the current quarter with the corresponding value of the previous quarter. Afterwards, the fixed base index for the current quarter is calculated by multiplying the moving base index by the fixed base index of the previous quarter.

The surveyed sample amounts to 7,146 enterprises. The quarterly calculations of the revised indices concern joint enterprises that have administrative data in two consecutive quarters (current and previous) and were recalculated from the 1st quarter of 2022 to the 3rd quarter of 2025 with base year 2021=100.0, with the first moving base index of the 1st quarter of 2022 and the fixed index of the 4th quarter of 2021, according to the chaining method.

References

More information on the time series of indices from 2010 on the: Persons Employed, Hours of Work of Employees and Wages and Salaries (without calendar or seasonal adjustment), in twelve main sections of the statistical classification of economic activities NACE Rev. 2 and in the total indices of Industry (BTE) and Services (HTNXX), the Retail Trade index (div. 47) and the index excluding fuels (group 473) of the Employment Indices (as well as their methodology which is under preparation), is available on the ELSTAT's website:

<http://www.statistics.gr/el/statistics/-/publication/DKT03/->