



## ISSUING OF MOTOR VEHICLE LICENSES: FEBRUARY 2023

The Hellenic Statistical Authority announces that in February 2023, 17,233 road motor cars (both new and used from abroad) were put into circulation for the first time, recording a 7.0% decrease compared with the corresponding month of 2022 when the number of road motor cars was 18,521. In February 2022, a 37.6% increase had been observed in comparison with the corresponding month of 2021 (Table 1, Graphs 1,2,3,5). A total number of 10,824 new cars were put into circulation in February 2023 compared with 9,300 in February 2022, recording a 16.4% increase.

The new motorcycles over 50cc (both new and used from abroad) that were put into circulation for the first time in February 2023 amounted to 3,045, against 3,571 in 2022, thus recording a 14.7% decrease. In February 2022, a 42.0% increase had been observed in comparison with the corresponding month of 2021 (Table 1, Graph 4). Out of the above motorcycles 2,866 were new, while the corresponding figure in February 2022 was 3,185, recording a 10.0% decrease.

During the period January - February 2023, 38,362 road motor cars (both new and used from abroad) were put into circulation for the first time, representing an increase of 17.8% compared to the corresponding period of 2022 when the number of road motor cars was 32,565. During the period January - February 2022 an increase of 10.6% had been observed in comparison with the corresponding period of 2021 (Table 3, Graphs 6,7). Out of the above number of road motor cars that were put into circulation, from January to February 2023, 22,462 were new, while the corresponding number during the respective period of 2022 was 15,357, recording an increase of 46.3%.

During the period January - February 2023 the circulation of new motorcycles over 50cc (both new and used from abroad) amounted to 7,232 against 5,902 in 2022, thus representing a 22.5% increase. An increase of 32.0% had been observed during the period January - February 2022 in comparison with the corresponding period of 2021 (Table 3, Graphs 6,7). A total number of 6,730 new motorcycles were put into circulation, from January to February 2023, compared with 5,277 during the corresponding period of 2021, recording a 27.5% increase.

*Information on methodological issues:*

*Sectoral Statistics Division*

*Transport Statistics Section*

Pota Tzortzi, Konstantinos Menexes

Tel: +30 213 135 2187, +30 213 135 3055

e-mail: p.tzortzi@statistics.gr, k.menexes@statistics.gr

Information for data provision:

Tel: +30 213 135 2022

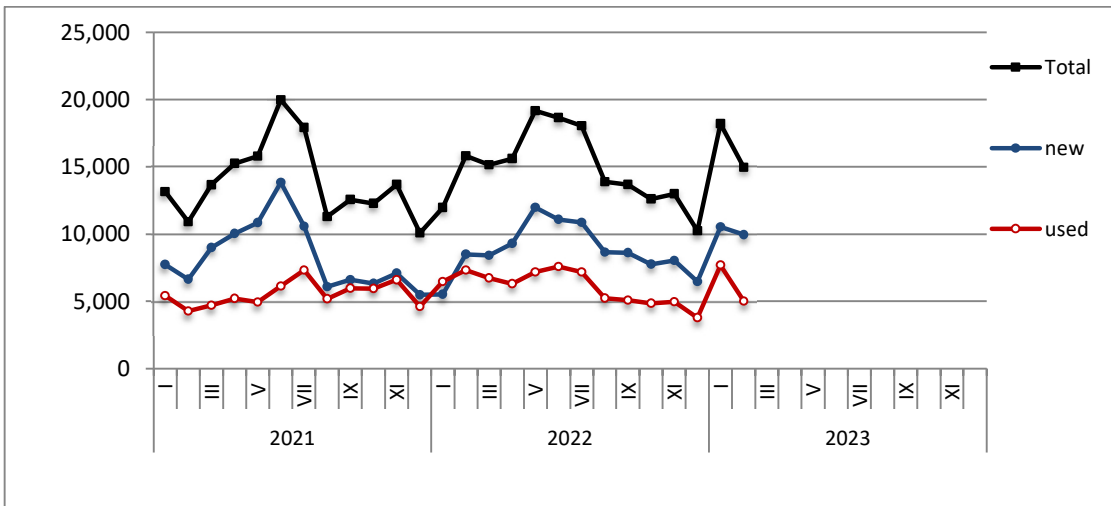
e-mail: data.dissem@statistics.gr

Table 1. Road motor vehicles, both new and used, put into circulation for the first time in Greece: February 2021 - 2023															
Category of Road Motor Vehicles	February									Change (%)					
	2021			2022			2023			2022/2021			2023/2022		
	Total	New	Used	Total	New	Used	Total	New	Used	Total	New	Used	Total	New	Used
<b>Greece, total</b>															
Road Motor Vehicles, total	15,978	9,612	6,366	22,092	12,485	9,607	20,278	13,690	6,588	38.3%	29.9%	50.9%	-8.2%	9.7%	-31.4%
1. Road motor cars	13,464	7,379	6,085	18,521	9,300	9,221	17,233	10,824	6,409	37.6%	26.0%	51.5%	-7.0%	16.4%	-30.5%
Passenger Cars	10,913	6,652	4,261	15,820	8,502	7,318	14,974	9,955	5,019	45.0%	27.8%	71.7%	-5.3%	17.1%	-31.4%
Buses	77	14	63	88	13	75	104	21	83	14.3%	-7.1%	19.0%	18.2%	61.5%	10.7%
Lorries	2,474	713	1,761	2,613	785	1,828	2,155	848	1,307	5.6%	10.1%	3.8%	-17.5%	8.0%	-28.5%
2. Motorcycles > 50 cc	2,514	2,233	281	3,571	3,185	386	3,045	2,866	179	42.0%	42.6%	37.4%	-14.7%	-10.0%	-53.6%
<b>Prefecture of Attica</b>															
Road Motor Vehicles, total	8,398	6,103	2,295	12,236	8,187	4,049	11,738	9,153	2,585	45.7%	34.1%	76.4%	-4.1%	11.8%	-36.2%
1. Road motor cars	7,044	4,835	2,209	10,303	6,433	3,870	10,125	7,590	2,535	46.3%	33.1%	75.2%	-1.7%	18.0%	-34.5%
Passenger Cars	6,166	4,428	1,738	9,201	5,931	3,270	9,163	7,034	2,129	49.2%	33.9%	88.1%	-0.4%	18.6%	-34.9%
Buses	26	9	17	42	7	35	46	13	33	61.5%	-22.2%	105.9%	9.5%	85.7%	-5.7%
Lorries	852	398	454	1,060	495	565	916	543	373	24.4%	24.4%	24.4%	-13.6%	9.7%	-34.0%
2. Motorcycles > 50 cc	1,354	1,268	86	1,933	1,754	179	1,613	1,563	50	42.8%	38.3%	108.1%	-16.6%	-10.9%	-72.1%

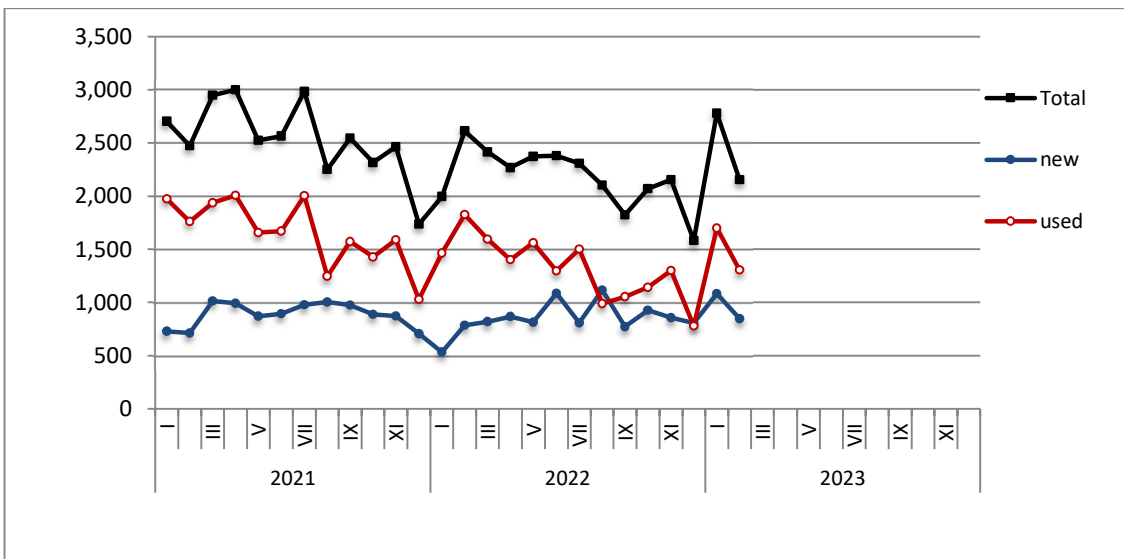
Table 2. Road motor vehicles, both new and used, put into circulation for the first time in Greece: March 2021 – February 2023

Category of Road Motor Vehicles	Average Mar. 2021 - Feb. 2022			Average Mar. 2022 - Feb. 2023			Change (%)		
	Total	New	Used	Total	New	Used	Average Mar. 2022 - Feb. 2023 / Average Mar. 2021 - Feb. 2022		
							Total	New	Used
<b>Greece, total</b>									
Road Motor Vehicles, total	20,993	13,053	7,940	22,680	14,991	7,689	8.0%	14.8%	-3.2%
1. Road motor cars	16,806	9,238	7,568	17,578	10,232	7,346	4.6%	10.8%	-2.9%
Passenger Cars	14,192	8,326	5,866	15,270	9,307	5,963	7.6%	11.8%	1.7%
Buses	118	36	82	106	25	81	-10.2%	-30.6%	-1.2%
Lorries	2,496	876	1,620	2,202	900	1,302	-11.8%	2.7%	-19.6%
2. Motorcycles > 50 cc	4,187	3,815	372	5,102	4,759	343	21.9%	24.7%	-7.8%

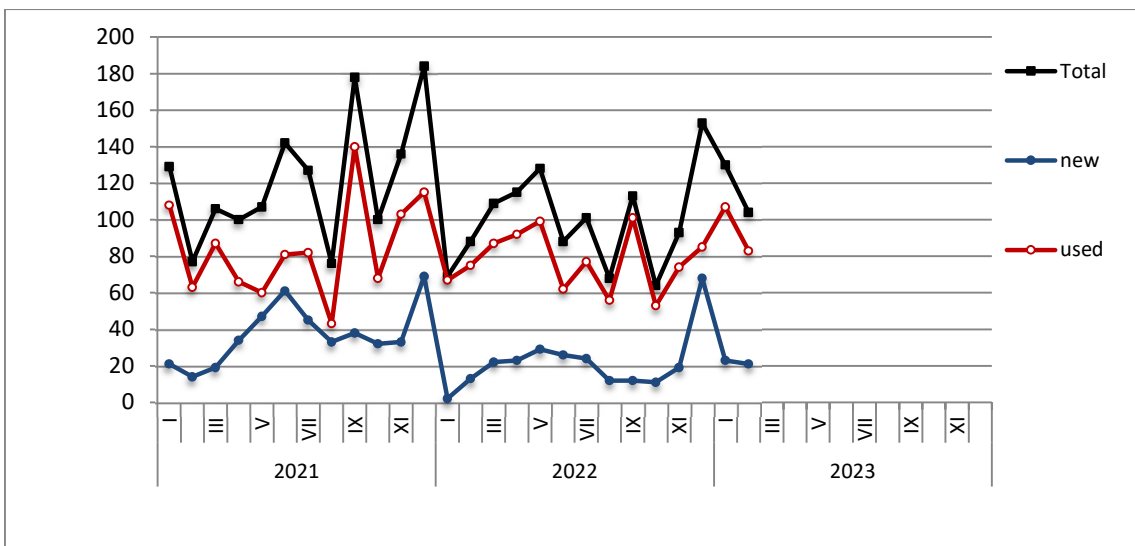
**Graph 1: Passenger Cars (January 2021 – February 2023)**



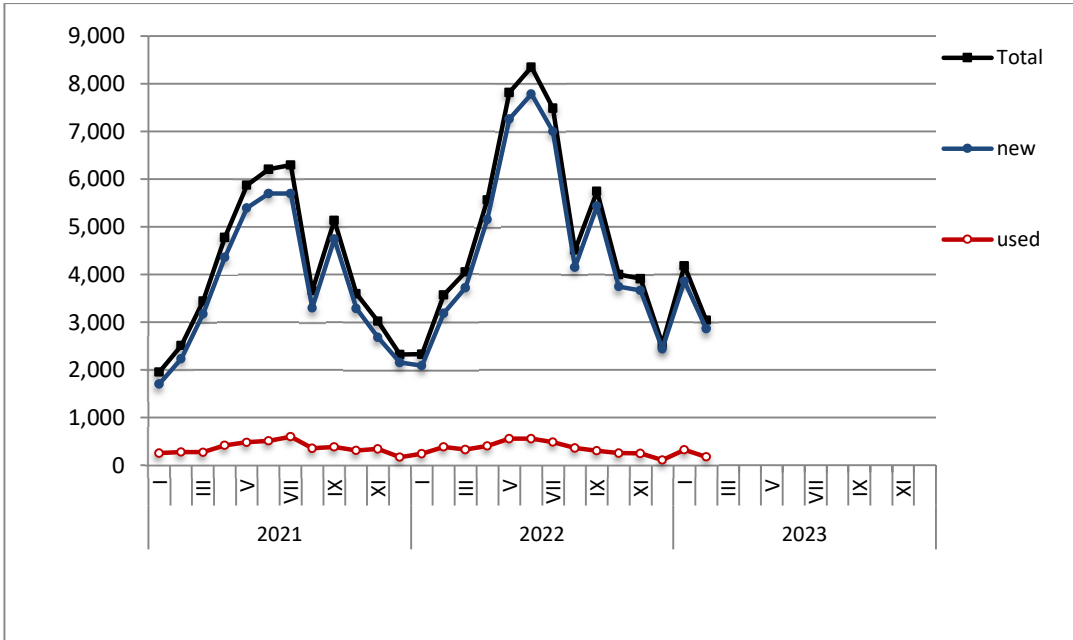
**Graph 2: Lorries (January 2021 – February 2023)**



**Graph 3: Buses (January 2021 – February 2023)**



**Graph 4: Motorcycles (January 2021 – February 2023)**



**Graph 5: New Registrations of Motor Vehicles (February 2023)**

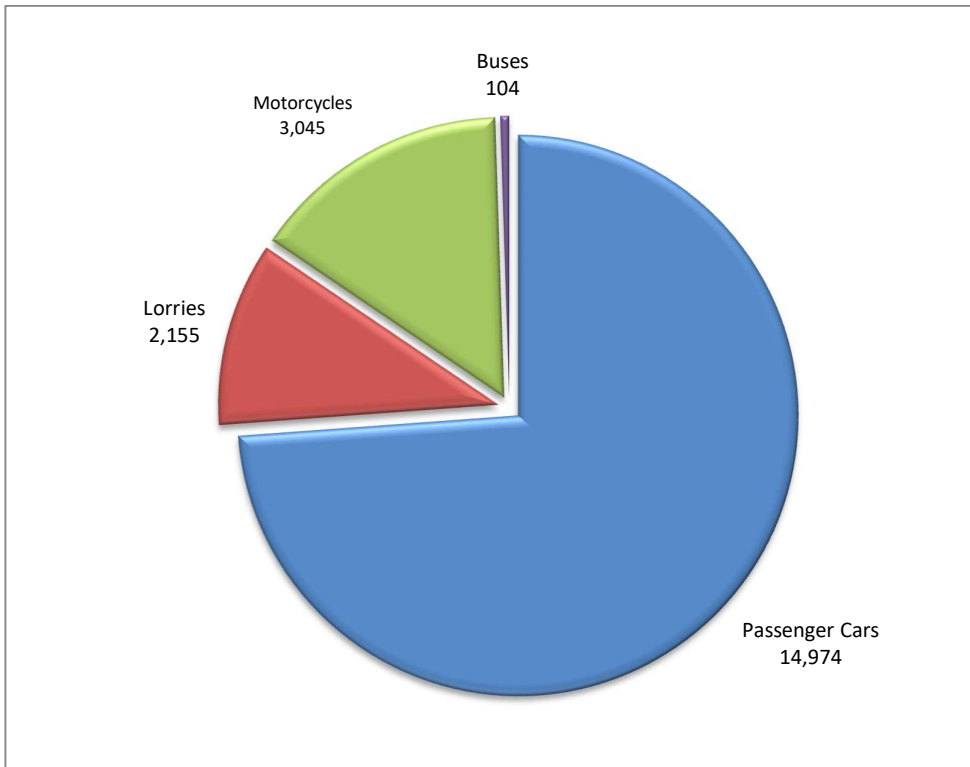
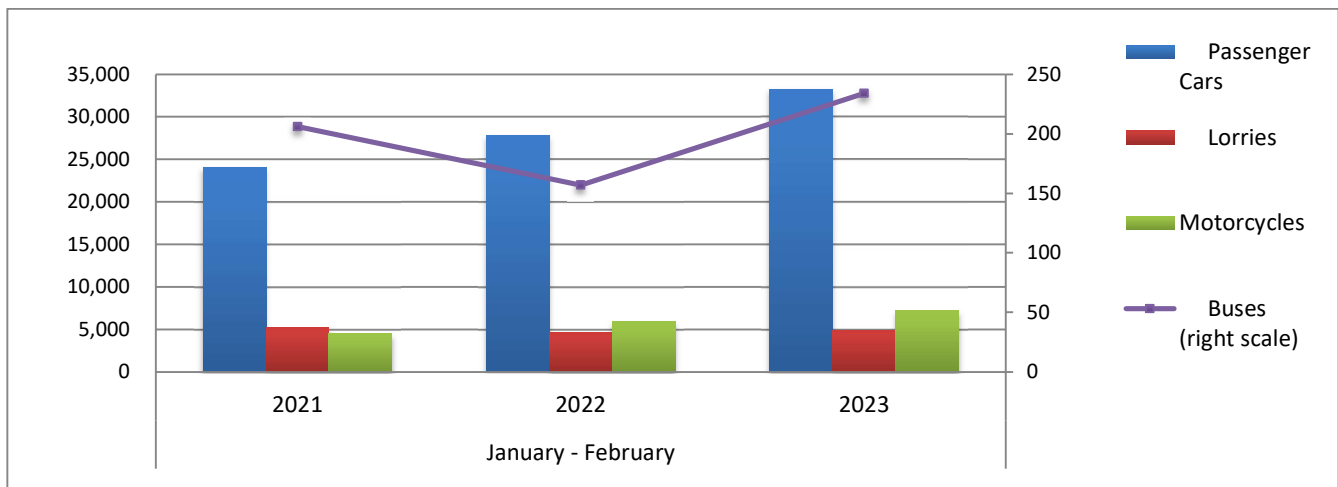


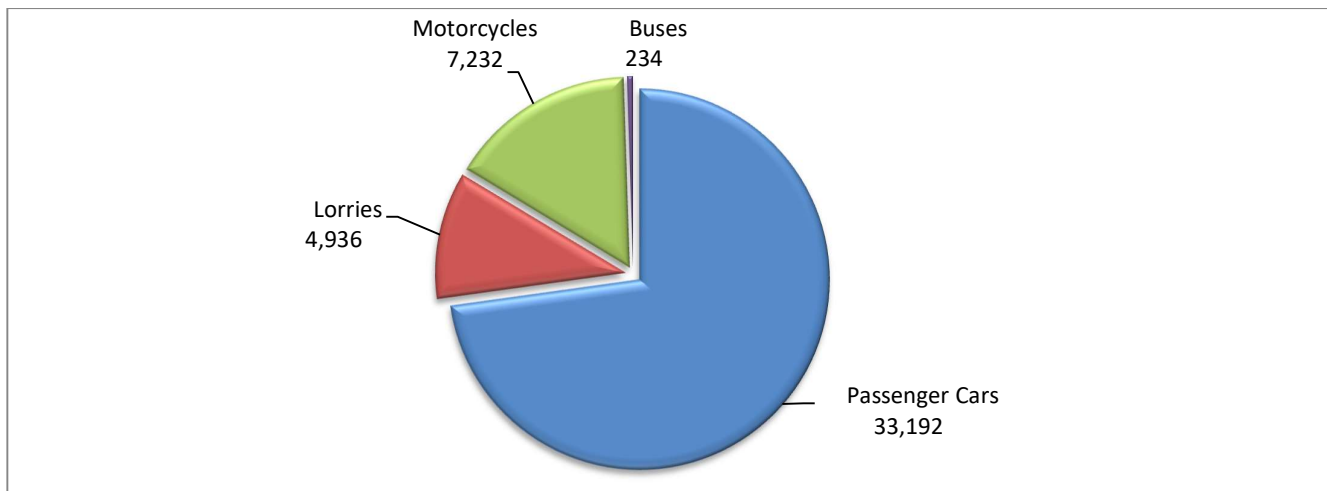
Table 3. Road motor vehicles, both new and used, put into circulation for the first time in Greece: January - February, years 2021 till 2023															
Category of Road Motor Vehicles	January - February									Change (%)					
	2021			2022			2023			2022/2021			2023/2022		
	Total	New	Used	Total	New	Used	Total	New	Used	Total	New	Used	Total	New	Used
<b>Greece, total</b>															
Road Motor Vehicles, total	33,918	19,794	14,124	38,467	20,634	17,833	45,594	29,192	16,402	13.4%	4.2%	26.3%	18.5%	41.5%	-8.0%
<b>1. Road motor cars</b>	<b>29,447</b>	<b>15,857</b>	<b>13,590</b>	<b>32,565</b>	<b>15,357</b>	<b>17,208</b>	<b>38,362</b>	<b>22,462</b>	<b>15,900</b>	<b>10.6%</b>	<b>-3.2%</b>	<b>26.6%</b>	<b>17.8%</b>	<b>46.3%</b>	<b>-7.6%</b>
Passenger Cars	24,064	14,381	9,683	27,797	14,024	13,773	33,192	20,488	12,704	15.5%	-2.5%	42.2%	19.4%	46.1%	-7.8%
Buses	206	35	171	157	15	142	234	44	190	-23.8%	-57.1%	-17.0%	49.0%	193.3%	33.8%
Lorries	5,177	1,441	3,736	4,611	1,318	3,293	4,936	1,930	3,006	-10.9%	-8.5%	-11.9%	7.0%	46.4%	-8.7%
<b>2. Motorcycles &gt; 50 cc</b>	<b>4,471</b>	<b>3,937</b>	<b>534</b>	<b>5,902</b>	<b>5,277</b>	<b>625</b>	<b>7,232</b>	<b>6,730</b>	<b>502</b>	<b>32.0%</b>	<b>34.0%</b>	<b>17.0%</b>	<b>22.5%</b>	<b>27.5%</b>	<b>-19.7%</b>
<b>Prefecture of Attica</b>															
Road Motor Vehicles, total *	17,815	12,758	5,057	19,931	13,088	6,843	25,951	19,320	6,631	11.9%	2.6%	35.3%	30.2%	47.6%	-3.1%
<b>1. Road motor cars *</b>	<b>15,182</b>	<b>10,289</b>	<b>4,893</b>	<b>16,758</b>	<b>10,168</b>	<b>6,590</b>	<b>22,033</b>	<b>15,568</b>	<b>6,465</b>	<b>10.4%</b>	<b>-1.2%</b>	<b>34.7%</b>	<b>31.5%</b>	<b>53.1%</b>	<b>-1.9%</b>
Passenger Cars	13,345	9,485	3,860	14,974	9,363	5,611	19,838	14,316	5,522	12.2%	-1.3%	45.4%	32.5%	52.9%	-1.6%
Buses	56	20	36	63	8	55	125	32	93	12.5%	-60.0%	52.8%	98.4%	300.0%	69.1%
Lorries *	1,781	784	997	1,721	797	924	2,070	1,220	850	-3.4%	1.7%	-7.3%	20.3%	53.1%	-8.0%
<b>2. Motorcycles &gt; 50 cc</b>	<b>2,633</b>	<b>2,469</b>	<b>164</b>	<b>3,173</b>	<b>2,920</b>	<b>253</b>	<b>3,918</b>	<b>3,752</b>	<b>166</b>	<b>20.5%</b>	<b>18.3%</b>	<b>54.3%</b>	<b>23.5%</b>	<b>28.5%</b>	<b>-34.4%</b>

\* Data concerning lorries for prefecture of Attica of year 2022 have been revised.

**Graph 6. New Motor Vehicles Circulation Licenses: January – February, years 2021 till 2023**



**Graph 7. New Registrations of Motor Vehicles: January – February 2023**



**Table 4**  
**Sales of new and used passenger cars by make: February 2023 and January - February 2023**

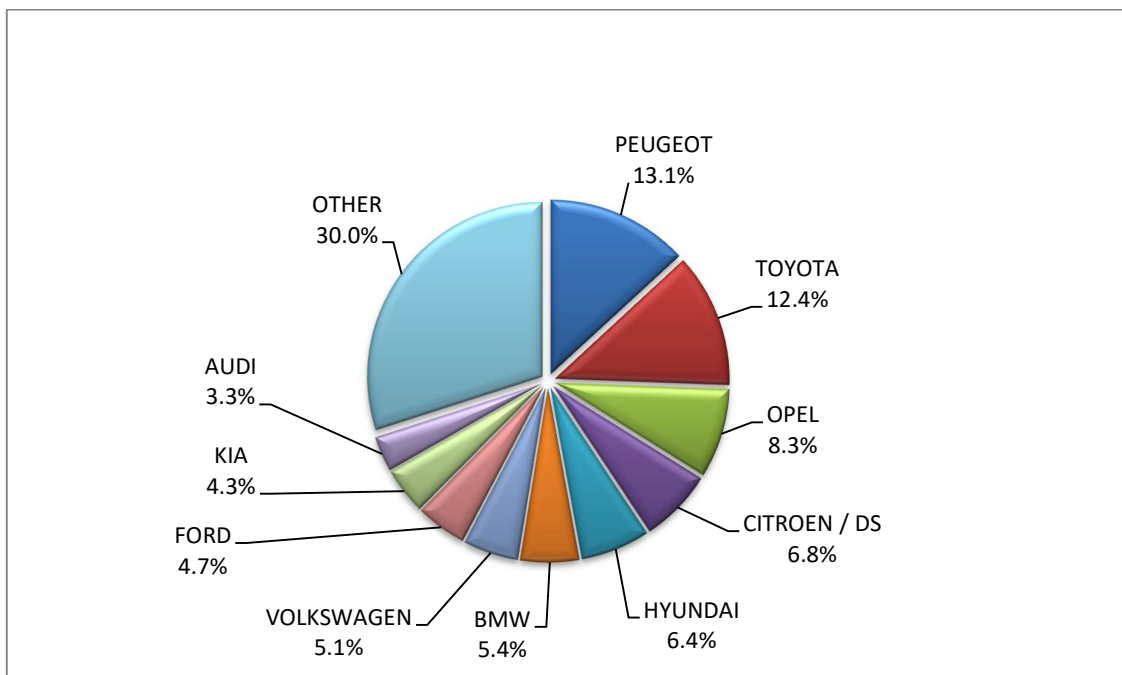
Make	Passenger cars			
	February		January - February	
	new	used	new	used
ADRIA	-	-	-	1
ALFA ROMEO	64	49	116	117
ALPINA	-	-	1	-
ASTON MARTIN	-	-	-	1
AUDI	327	86	553	237
BENTLEY	1	1	1	1
BMW	541	127	719	346
CADILLAC	-	1	-	1
CAPRON	-	2	1	3
CARTHAGO	-	-	-	1
CHAUSSON	1	-	1	-
CHEVROLET	-	18	-	53
CITROEN	238	171	499	483
CITROEN / DS	679	24	1,448	56
CUPRA	19	-	54	-
DACIA	234	134	443	335
DAIHATSU	-	-	-	1
DODGE	-	1	-	2
DS	91	1	175	4
FIAT	224	219	442	604
FORD	472	366	781	930
FIAT	-	-	-	1
GRUAU LAVAL	-	1	-	1
HILLMAN	11	-	30	2
HOBBY	-	-	-	1
HONDA	19	36	31	89
HYMER	14	-	58	8
HYUNDAI	640	386	1,721	1,051
INFINITI	-	6	-	11
IVECO S.p.a/LAIKA CARAVANS SpA	-	1	-	1
JAGUAR	9	12	22	29
JEEP	198	24	404	58
KIA	431	84	816	243
KNAUS	-	3	-	5
LADA	-	-	-	1
LANCIA	-	4	-	12
LAND ROVER	45	35	101	100
LEAPMOTOR	-	-	1	-
LEXUS	10	5	24	9
LOTUS	1	1	1	1
MASERATI	1	4	4	8
MAZDA	39	24	144	58
MC LOUIS SPA	-	-	-	1
MERCEDES	224	333	414	753
MERCEDES <sup>1</sup>	-	-	1	-
MERCEDES MAYBACH	-	2	-	2
MINI	111	60	167	118
MITSUBISHI	-	77	2	174

**Table 4 (cont)**  
**Sales of new and used passenger cars by make: February 2023 and January - February 2023**

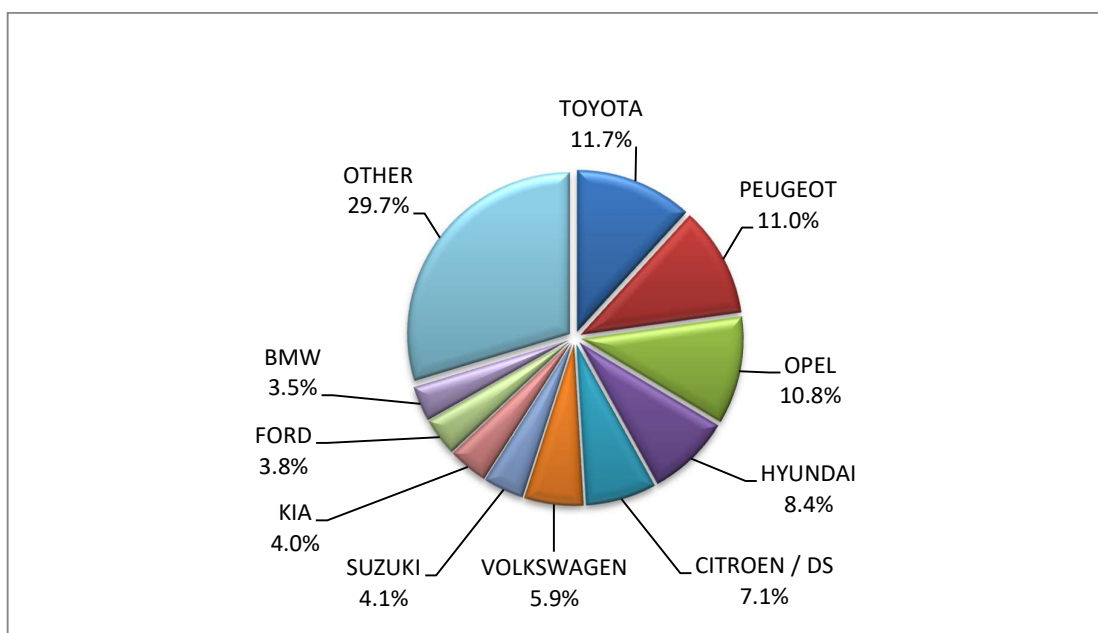
Make	Passenger cars			
	February		January - February	
	new	used	new	used
MPM MOTORS	-	-	-	1
NISSAN	210	382	517	896
OPEL	826	359	2,216	937
PEUGEOT	1,308	277	2,260	748
PEUGEOT <sup>2</sup>	1	-	1	-
PORSCHE	20	32	36	81
RANGE ROVER	14	4	19	8
RELIANT	-	-	-	1
RENAULT	284	579	627	1,394
SAAB	-	-	-	3
SEAT	149	33	324	109
SKODA	208	140	381	338
SMART	5	84	7	220
SUBARU	8	11	13	23
SUZUKI	310	117	832	284
TESLA	98	2	141	9
TOYOTA	1,238	440	2,406	1,038
VOLKSWAGEN	511	250	1,207	667
VOLVO	121	11	326	34
<b>TOTAL</b>	<b>9,955</b>	<b>5,019</b>	<b>20,488</b>	<b>12,704</b>

- 1 : With 2nd/3rd stage manufacturer in Greece.
- 2 : With 2nd/3rd stage manufacturer abroad.

**Graph 8. Sales of new passenger cars by make (February 2023)**



**Graph 9. Sales of new passenger cars by make (January – February 2023)**



**Table 5  
Sales of new and used lorries by make: February 2023 and January - February 2023**

Make	Lorries			
	February		January - February	
	new	used	new	used
CHRYSLER	-	-	-	1
CITROEN	83	34	160	83
DACIA	-	4	-	7
DAF	-	27	-	88
DAF <sup>1</sup>	2	-	4	-
DAIHATSU	-	1	-	1
DENNIS EAGLE	-	-	-	1
DODGE	-	1	-	1
FCA US LLC	-	-	-	1
FIAT	108	92	210	235
FIAT DUCATO <sup>1</sup>	1	-	1	-
FIAT-IVECO	-	3	-	6
FORD	220	191	542	414
FORD <sup>1</sup>	-	-	4	-
GINAF	-	-	-	1
GOUPIL	1	-	1	-
HYUNDAI	-	3	-	5
ISUZU	15	21	32	39
IVECO	3	41	4	81
IVECO <sup>1</sup>	5	-	17	-
IVECO MAGIRUS	-	1	-	2
IVECO MAGIRUS <sup>1</sup>	3	-	3	-
JEEP	5	-	14	-



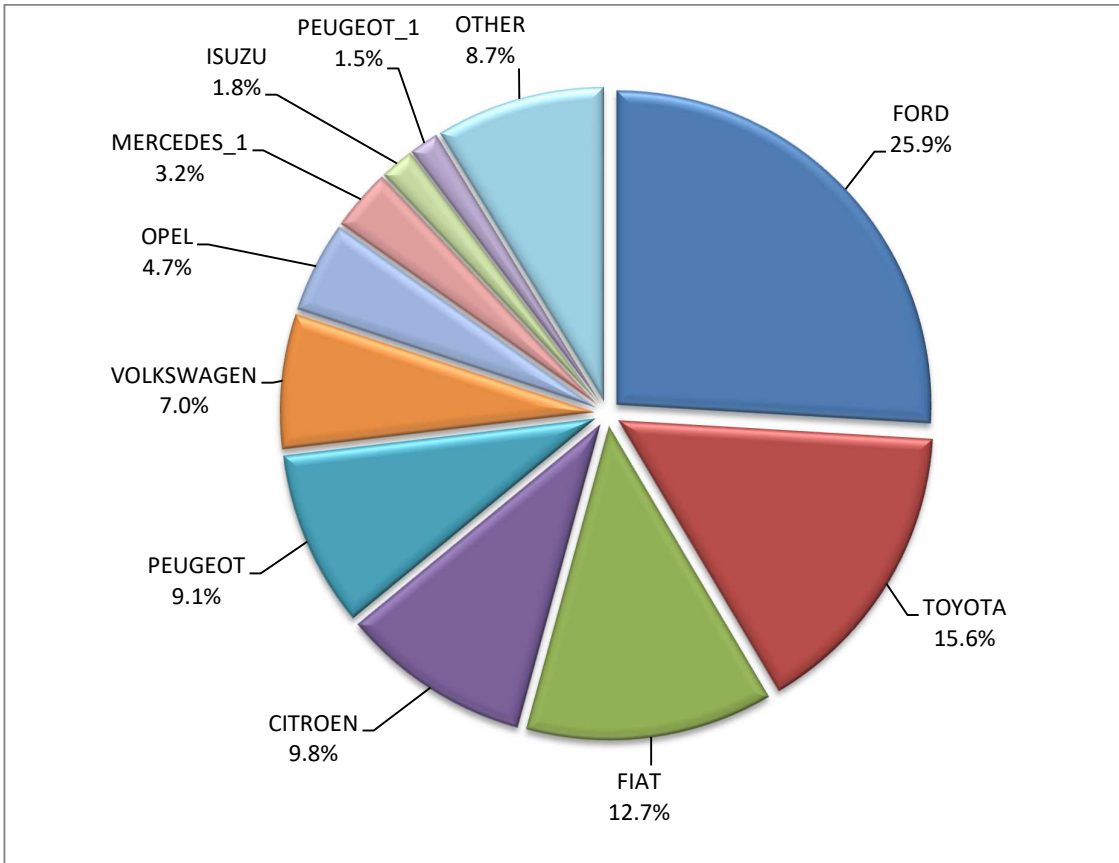
**Table 5 (cont)**  
**Sales of new and used lorries by make: February 2023 and January - February 2023**

Make	Lorries			
	February		January - February	
	new	used	new	used
LAND ROVER	-	-	1	1
LEVC	-	-	1	-
MAN	-	76	-	198
MAN <sup>1</sup>	1	1	1	1
MAXUS , LDV	-	-	3	-
MAZDA	-	-	-	1
MERCEDES	12	324	31	676
MERCEDES <sup>1</sup>	27	-	52	1
MITSUBISHI	2	31	3	66
MITSUBISHI <sup>1</sup>	11	-	18	-
NISSAN	9	53	20	110
OAF	-	-	-	2
OPEL	40	43	83	96
PEUGEOT	77	29	241	81
PEUGEOT <sup>1</sup>	13	-	22	-
PIAGGIO	4	5	5	8
PIAGGIO <sup>1</sup>	-	-	3	-
RENAULT	5	75	34	181
SAAB	-	-	-	1
SCANIA	1	64	7	187
SCANIA <sup>1</sup>	-	-	2	-
SEAT	-	1	-	4
SUZUKI	4	1	21	1
TECMEC A.E.B.E.	1	-	3	-
TOYOTA	132	23	286	59
VOLKSWAGEN	59	55	94	108
VOLVO	1	107	4	258
VOLVO <sup>1</sup>	3	-	3	-
<b>TOTAL</b>	<b>848</b>	<b>1,307</b>	<b>1,930</b>	<b>3,006</b>

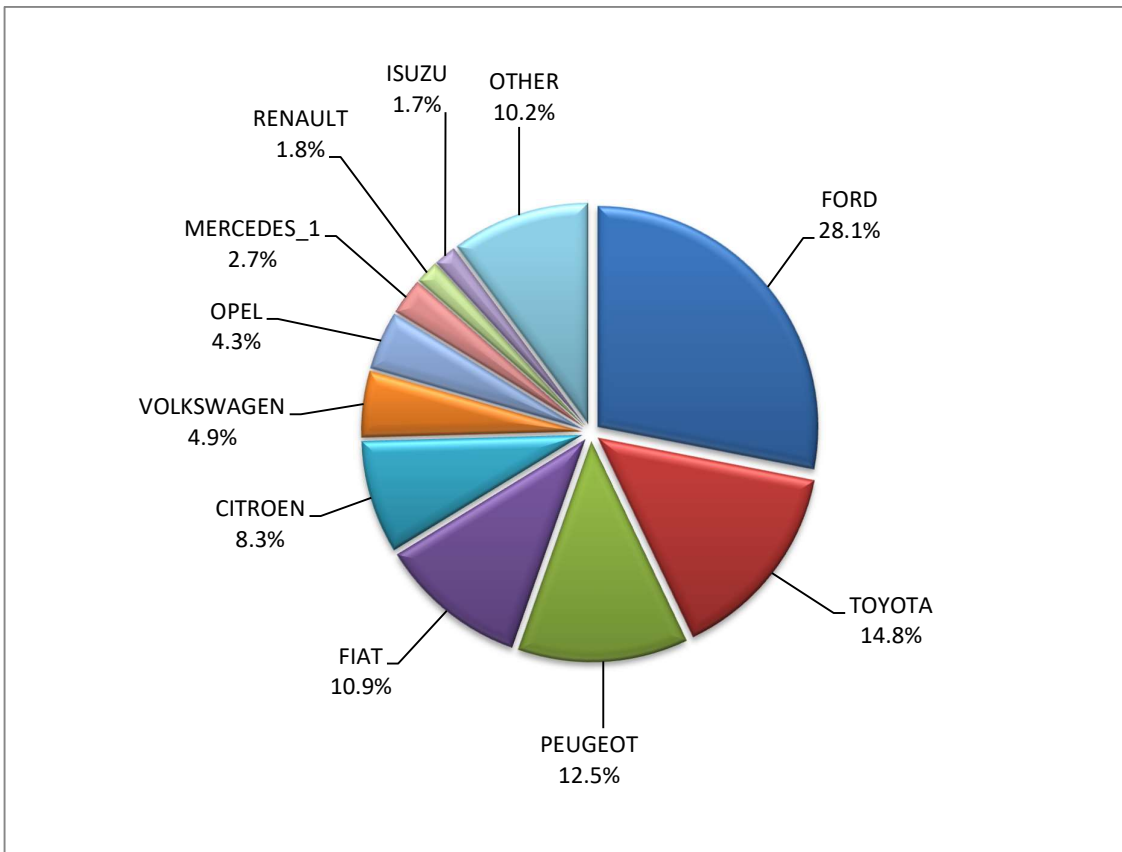
**1 : With 2nd/3rd stage manufacturer in Greece.**

**2 : With 2nd/3rd stage manufacturer abroad.**

**Graph 10. Sales of new lorries by make (February 2023)**



**Graph 11. Sales of new lorries by make (January – February 2023)**



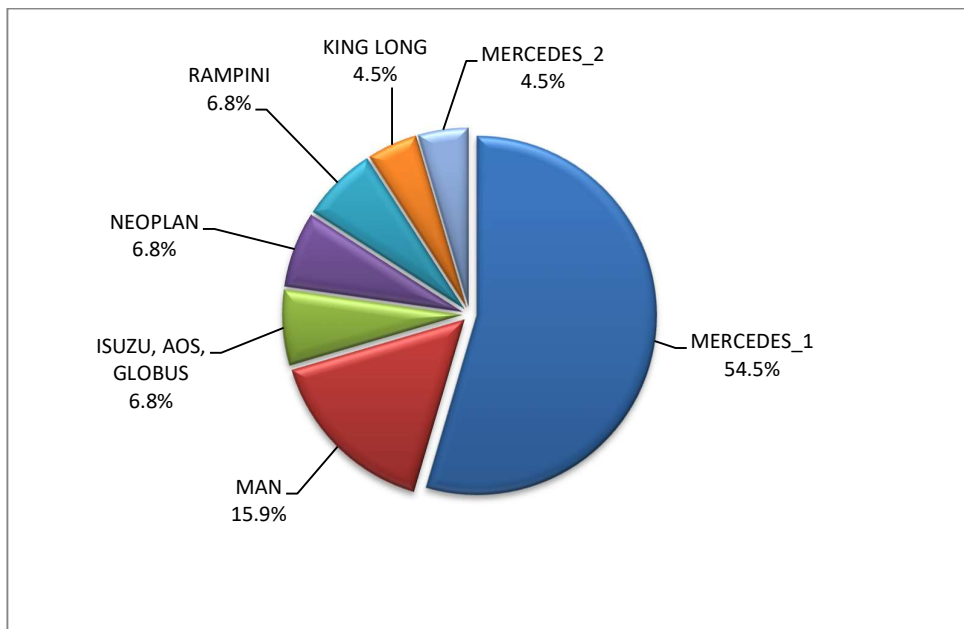
**Table 6**  
**Sales of new and used buses by make: February 2023 and January - February 2023**

Make	Buses			
	February		January - February	
	new	used	new	used
BOVA	-	3	-	7
FORD	-	1	-	4
ISUZU, AOS, GLOBUS	2	-	3	-
IVECO	-	2	-	2
KING LONG	2	-	2	-
MAN	3	19	7	29
MERCEDES	-	50	-	127
MERCEDES <sup>1</sup>	10	1	24	1
MERCEDES <sup>2</sup>	1	-	2	1
NEOPLAN	-	1	3	2
OTOKAR	-	-	-	2
RAMPINI	3	-	3	-
SETRA	-	3	-	7
TEMSA	-	2	-	3
VAN HOOL	-	1	-	2
VOLKSWAGEN	-	-	-	1
VOLVO	-	-	-	2
<b>TOTAL</b>	<b>21</b>	<b>83</b>	<b>44</b>	<b>190</b>

**1 : With 2nd/3rd stage manufacturer in Greece.**

**2 : With 2nd/3rd stage manufacturer abroad.**

**Graph 12. Sales of new buses by make (January – February 2023)**



**Table 7**

**Sales of new and used motorcycles by make or manufacturer: February 2023 and January - February 2023**

Make	Motorcycles			
	February		January - February	
	new	used	new	used
AEON MOTOR	-	1	-	1
ALRENDO	-	-	1	-
APRILIA	24	-	70	1
ARMONY, ARORA, BUKE, BULL MOTORS	-	-	1	-
BAJAJ	2	-	6	-
BAOTIAN, SUPERKING, WALTON, HONDA	-	-	1	-
BASHAN, AMGroup, AMGroup Bike, DON, IRBIS, WORKER BEAR, Nomik ATV 2	1	-	1	-
BENELLI	15	-	38	-
BETA	13	-	27	-
BMW	58	18	148	61
BOMBARDIER RECREATIONAL PRODUCTS ING (BRP)	-	-	-	2
BRIXTON	6	-	15	-
CFMOTO	86	1	148	2
DAYANG, DAYTONA MOTORS, NIPPONIA, DOCKER, WAYEL, SUMCO, VEEROAD, CETUR, RUTEC	1	-	1	-
DAYANG, DAYTONA MOTORS, NIPPONIA, DYMOTO, DOCKER, VEEROAD, EVO MOTORS, SUMCO, CETUR, HANSOM	3	-	10	-
DAYANG, DAYTONA MOTORS, NIPPONIA, DYMOTO, VEEROAD, EVO MOTORS, MH MOTORCYCLES, FKM, FKMOTORS,	10	-	16	-
DAYANG, DAYTONA MOTORS, NIPPONIA, KUBA, VEEROAD, SUMCO, CETUR, RUTEC	42	-	92	1
DAYANG, DAYTONA MOTORS, NIPPONIA, VEEROAD, DOCKER	163	-	398	1
DAYANG, ECOCREMO, ECOOTER, ECOOTOR,AGM, ORCAL, SUMCO	-	-	1	-
DAYANG, DAYTONA MOTORS, NIPPONIA, DOCKER, WAYEL, SUMCO, VEEROAD, CETUR, RUTEC, ZENKO	2	-	9	-
DAYTONA MOTORS, DAYANG, NIPPONIA, DYMOTO, DOCKER, VEEROAD, EVO MOTORS, SUMCO, CETUR, HANSOM, RUTEC	6	1	6	1
DAYTONA MOTORS, EVO MOTORS, LONGJIA, ORCAL, NECO, VGA, ROMET MOTORS, DRAX, MONDIAL, JUNAK, ONLINE	7	-	7	-
DAYTONA MOTORS, YINGANG, KUBA, RKS, SKYJET, MAGPOWER, MITT, VENTUR, ARCHIVE MOTORCYCLE	2	-	2	-
DERBI	-	-	-	1
DUCATI	10	5	24	15
E TUK FACTORY	-	-	1	-
E-BROH	1	-	1	-
EFUN, ZAP	12	-	18	-
EMBUGGY, EVANGEL, The Original BeachBuggy, Beach Buggy	4	-	4	-
FD MOTORS, FASPIDER, Daytona Motors, EVO Motors, Veeroad	1	-	1	-
FD MOTORS, FASPIDER, DAYTONA MOTORS, NIPPONIA, QUANTYA	2	-	7	-
FELQ	1	-	1	-
FENGCHENG, FULLCHEER, Barman-pakro, NITSURO, VOLDORK, SPIMRI, Elektra EV, EKOe, BITMART	1	-	1	-
GASGAS	1	1	2	2
GENERIC,EXPLORER,MALANCA,KSR Moto Austria, Motron Motorrad	1	-	1	-
GILERA, PIAGGIO	-	1	-	2
GOLDEN LION, SAKURA, ARTISAN, ETALIAN, E-mio, Fauro, Kito, Varaneo, Viverra	1	-	3	-
GPX	12	-	18	-
GUSITE, RKS, KUBA, KOKO, KAVIR, BECANE, EVO MOTORS, Daytona MOTORS, SUMCO, SKYJET	5	-	5	-
Haojiang,ZONTES,TAYO,Sharpon,IFINO,KIDEN,ZHONGYU,CUBTOM,DIYUN,NAMIN,TIM DERVI,VUKA,THUMP,R-ipper	2	-	12	-
HARLEY DAVIDSON	1	7	1	18

Table 7 (cont)

## Sales of new and used motorcycles by make or manufacturer: February 2023 and January - February 2023

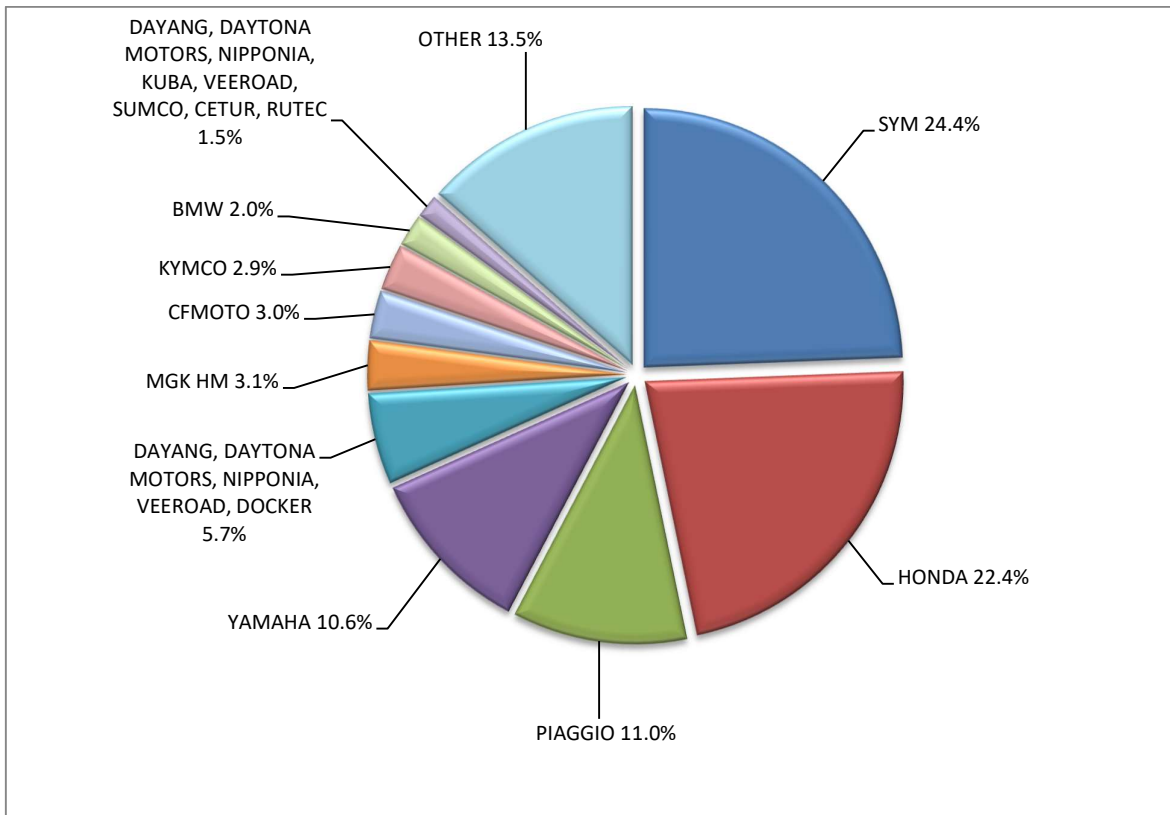
Make	Motorcycles			
	February		January - February	
	new	used	new	used
HONDA	641	26	1,740	82
HUSQVARNA	10	2	17	7
INDIAN MOTORCYCLE	2	-	6	-
ITALJET	-	-	1	-
JAWA	-	-	1	-
JIAYUAN	6	-	16	-
JNEN, JUNENG, ZIPP, MOTORAN, HORS,FLEX TECH, RAZZO, TOROS, ONE, JUNAK	1	-	3	-
KAWASAKI	5	7	8	17
KEEWAY	-	1	-	1
KSR MOTO AUSTRI	1	-	4	-
KTM	20	8	51	23
KWANG YANG	-	-	2	-
KYMCO	83	22	168	60
LAMBRETTA	-	-	1	-
Lingzhida, LINZDA, LINDN, LINYI, LONGMAO, NLIGHT	1	-	1	-
LOJO, SUNPULSE, YGM	4	-	4	-
LONCIN, KINLON, LONGTING, KUBA, YUKI, MONDIAL, STMAX, KANUNI, MOTORAN, ASYA, QUSWA, PUMAREX, RALLY USA, MOD, CCM	6	-	19	-
LONCIN, KUBA, RKS, ITALIKA, VOGÉ, SUNRACE, SKY, MALAGUTI, ROCKET, SUPERBIKE, NOVELBAT, TRIDIAMOND	17	-	41	-
LONCIN, VOGÉ	1	-	7	-
LONCIN, VOGÉ, KUBA, RKS , ITALIKA, SUNRACE, SKY, MALAGUTI, SUPERBIKE, ROCKET, NOVELBAT, TIGREMOTO, GREEN	3	-	6	-
LONGJIA, ORCAL, NECO, ALFASCOOTERS, VGA, ROMET MOTORS, RYMCO, ASUS, OVER, CAROLYN, KANUNI, BTC, TURBHO, ITALMOTO	10	-	17	-
LONGJIA, ORCAL, NECO, VGA, ROMET MOTORS, ROUTER, lexmoto, Gemini, MH, motorcycles	-	-	3	-
LVNENG	2	-	3	-
MACBOR, RVM, COLOVE, ORCAL, DAYTONA MOTORS, ZF-KY, Lexmoto, OVER BIKES, YUKI, AJS	5	-	15	-
MALAGUTI	17	-	31	2
MBK INDUSTRIE	-	-	2	-
MGK HM	89	-	235	1
MINSK, ZONGSHEN, IRIBIS, MONDIAL, LEXMOTO, JUNAK, HONLEY, OVERBIKES	-	-	3	-
MOTO GUZZI	5	-	11	-
MOTO MORINI	-	-	4	-
MV AGUSTA	-	-	1	-
NIU, NUUV	1	-	3	-
PEUGEOT	-	1	-	3
PIAGGIO	314	19	814	48
POLARIS	6	1	13	1
PURSANG	1	-	1	-
QJ, QJIANG, KEEWAY, LEONE, KUBA, RKS, BENELLI, VENGO, QJMOTOR, B MOTOBİ, ONLINE	2	-	4	-
QJ, QJIANG, KEEWAY, LEONE, KUBA, RKS, QJMOTOR, B MOTOBİ	1	-	1	-
QJ, QJIANG, KEEWAY, LEONE, RKS, BENELLI, EMPIRE KEEWAY, KUBA	2	-	4	-
QJ, QJIANG, QJMOTOR, B MOTOBİ	3	-	3	-
REDMOTO	1	-	2	-
ROYAL ENFIELD	13	-	33	1
SANYANG	-	1	-	1
SCUTUM, ETRIX, SILENCE	-	-	1	-

Table 7 (cont)

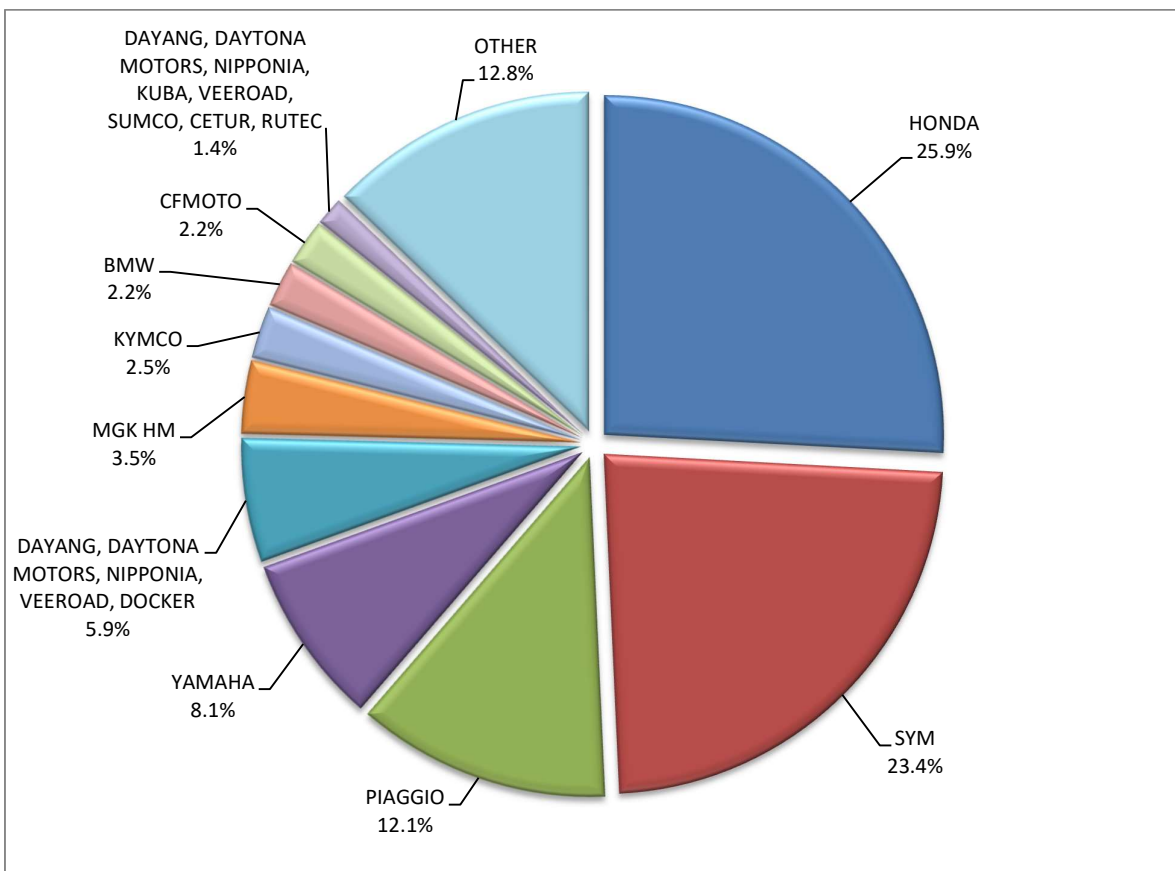
## Sales of new and used motorcycles by make or manufacturer: February 2023 and January - February 2023

Make	Motorcycles			
	February		January - February	
	new	used	new	used
SEGWAY	2	-	5	-
SHANYANG, ATLAS PANTHER, YAMAZUKI MOTO, MOTORKING, Hirlee, XB	2	-	3	-
SHERCO	2	-	4	-
SHINERAY, SWM	2	-	5	-
SILENCE, SCUTUM, ETRIX	2	-	9	-
SUZUKI	14	7	30	20
SYM	699	9	1,576	28
TARO, JUNAK, BARTON MOTORS ,ORCAL, Lexmoto	9	-	20	-
TARO, JUNAK, BARTON MOTORS, ORCAL, Lexmoto, MITT, NECO, WOTTAN, MAGPOWER, ADAMOTO, MAXON, MAX-ON, TRMOTOR, CHUANL	2	-	9	-
TARO, TRMOTOR, CHUANL, JUNAK, BARTON MOTORS, ORCAL, Lexmoto, MITT, NECO, WOTTAN, MAGPOWER, ADAMOTO MOTORCYCLES	1	-	1	-
TAYO, HAOJIANG, ZHONGYU, THUMP, THUMPSTAR, KIDEN, ZONTES, Junak	1	-	6	-
TAYO, HAOJIANG, ZHONGYU, THUMP, THUMPSTAR, KIDEN, ZONTES, Junak, SENKE, TANNY, TYAN, ROMET, ROMET MOTORS, ROUTER	6	-	13	-
TAYO, HAOJIANG, ZHONGYU, THUMP, THUMPSTAR, KIDEN, ZONTES, Junak, SENKE, TANNY, TYAN, ROMET	6	-	20	-
TAYO, ZONTES, KIDEN, Haojiang, ZHONGYU, Sharpon, TANNY, TYAN, Senke, BETA, Daytona Motors	2	-	15	-
TIANYING, RIYA, HONGYUNDA, TYM, HONLING, SANBEN, XINBEN, TAMCO, ALISON, DMK MOTORS	5	-	5	-
TINBOT, KOLLTER, MASAI, INTO, VIARELLI, EDRIVE, DuroCar, MGK HM, Fauro, BRINCO	3	-	3	-
TM RACING	-	-	-	1
TODAY SUNSHINE	-	-	1	-
TRIUMPH	9	2	19	8
VMOTO-SOCO, E-MAX, VMOTO, SUPER SOCO	8	-	12	-
VOLTA, VTA, REVOLT	-	-	3	-
WG TRIKE	-	1	-	1
WONJAN, THRUST MOTOR, WMOTO, KEEWAY, TD	4	-	7	-
WOW!	1	-	1	-
XINRI, SUNRA ,APACHI, ISILDAR, ISILDAR APACHI, Wayscral, KRAL	3	-	5	-
YAMAHA	304	37	547	89
YASAN MOTOR, Kito	1	-	1	-
YINXIANG, MONDIAL, GEMINI, TCB	1	-	1	-
YIYING	2	-	2	-
ZERO MOTORCYCLES	3	-	3	-
ZHIDOU , ZD, RKS	3	-	4	-
ZHONGNENG, ZNEN, AGM, BTC, CLS, COLIBRI	-	-	1	-
ZONGSHEN	-	-	1	-
<b>TOTAL</b>	<b>2,866</b>	<b>179</b>	<b>6,730</b>	<b>502</b>

**Graph 13. Sales of new motorcycles (February 2023)**



**Graph 14. Sales of new motorcycles (January – February 2023)**



## EXPLANATORY NOTES

<b>Survey on the issuing of new road motor vehicle circulation licenses</b>	The survey on the issuing of new motor vehicle circulation licenses is a census survey. The released data give information, at country level, on the brand and type of the motor vehicle, as well as whether it is new or used. The survey does not include vehicles that move on rails, trolley busses, agricultural tractors and machinery. In addition, the following are excluded: all motor vehicles of the Armed Forces, Police, Fire Brigade, State Services, Diplomatic Corps, Foreign Missions, and Invalids of Wars, as well as motorcycles with a cylinder capacity less than 50 cc.
<b>Legal basis</b>	Law 3832/2010
<b>Reference Period</b>	February 2023
<b>Coverage</b>	The production of monthly data is based on the registers held by the Ministry of Infrastructure, Transport and Networks, which records all the monthly changes observed in the vehicle registration licenses at country level.
<b>Definitions</b>	<p><b>Road motor vehicle</b> is any vehicle that, irrespective of the number of wheels, is moved by an engine and is designed to transport persons or cargo or both of them, either they are on the same single vehicle or on a trailer carried by the main motor vehicle.</p> <p><b>New</b> road motor vehicle is any motor vehicle that is registered for the first time in Greece during the reference month and has not been put into circulation in any other country.</p> <p><b>Used</b> motor vehicle is any motor vehicle that is registered for the first time in Greece and has been imported as a used one from abroad</p> <p><b>Passenger motor vehicle:</b> it is a motor vehicle designed to carry mostly people, having no more than 9 seats, including the driver's seat.</p> <p><b>Bus:</b> it is a motor vehicle, which is designed to carry mostly people, having more than 10 seats, including the driver's seat. In the corresponding tables of this announcement, this category also includes articulated buses.</p> <p><b>Lorry:</b> it is motor vehicle designed to carry mostly cargo. In the corresponding tables of this announcement, this category also includes tractors, tow trucks, articulated tractors, and trucks with trailers.</p> <p><b>Motorcycle:</b> any two-wheeled motor vehicle, with or without sidecar, with maximum authorized design speed over 45 km/h, or in case it is powered by a combustion engine, with a cylinder capacity of 50 cc or over. In the corresponding tables of this announcement, this category also includes the three-wheeled motor vehicles – motor tricycles.</p> <p><b>Tricycle motor vehicle:</b> it is a motor vehicle with three symmetrical wheels with maximum authorized design speed over 45 km/h, or in case it is powered by a combustion engine, with a cylinder capacity over the 50 cc. This category also includes four-wheel vehicles, except the light four-wheel motorcycles, whose empty vehicle tare (excluding the weight of the fuel or mixture of fuel-oil or the weight of the batteries for electric cars) is up to 400 kg in the case the vehicle is designed for passenger use or up to 550 kg in case the vehicle is designed to carry cargo and whose engine is up to 15KW.</p>
<b>Methodology</b>	Exhaustive Survey. The primary data derive from the Ministry of Infrastructure, Transport and Networks and are based on the issuing of new circulation licenses as they are registered by the Regional Offices for Transport and Communications.
<b>References</b>	More information (graphs, tables) concerning the survey on the issuing of new motor vehicle circulation licenses are available on the webpage of ELSTAT, <a href="http://www.statistics.gr">www.statistics.gr</a> , under the link <a href="http://www.statistics.gr/en/statistics/-/publication/SME24/">http://www.statistics.gr/en/statistics/-/publication/SME24/</a>