



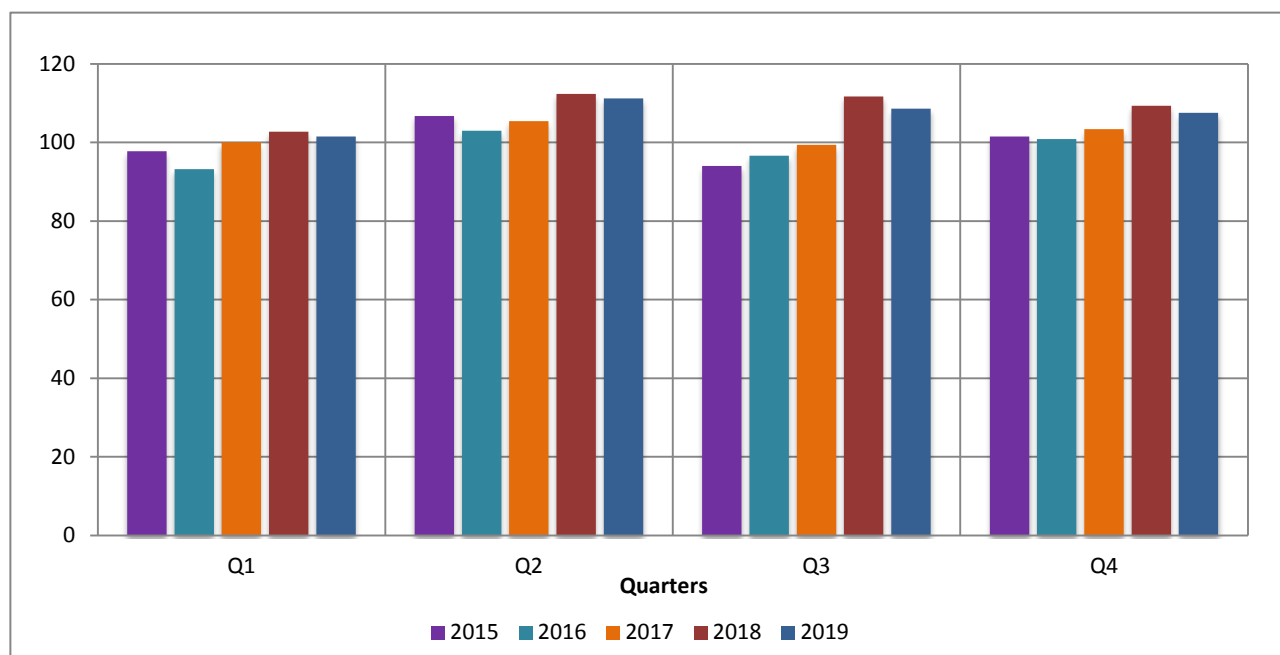
PRESS RELEASE

TURNOVER INDEX IN WHOLESALE TRADE: 4th quarter 2019, annual decrease 1.4%

The Hellenic Statistical Authority announces the Turnover Index in Wholesale Trade with base year 2015=100.0 for the 4th quarter 2019 according to provisional and working day adjusted data, as follows:

- The Turnover Index in Wholesale Trade in the 4th quarter 2019, compared with the corresponding index of the 4th quarter 2018, decreased by 1.4%, while, compared with the corresponding index of the 3rd quarter 2019, decreased by 1.0% (Table 1).
- The seasonally adjusted Turnover Index in the 4th quarter 2019, compared with the corresponding index of the 3rd quarter 2019, decreased by 0.7% (Table 1).

Graph 1. Evolution of turnover Index in the Wholesale Trade (2015=100.0)



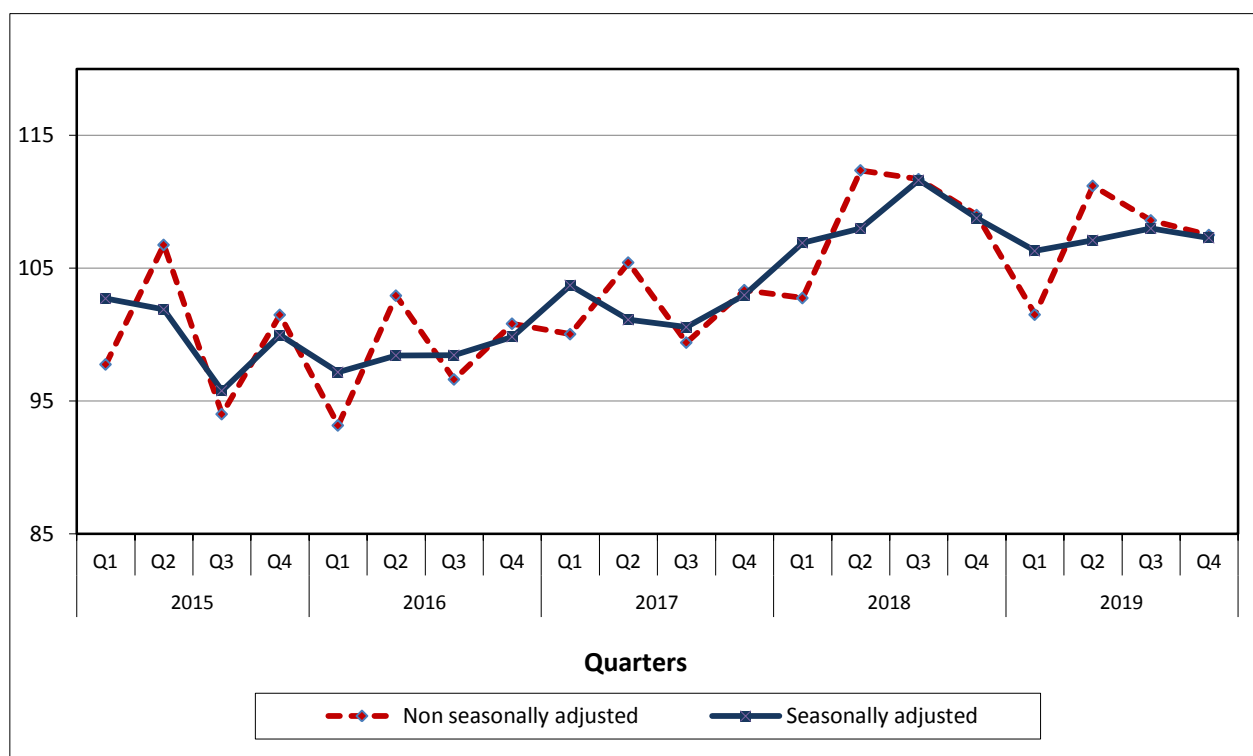
Information for methodological issues:

Division of Business Statistics
Section of Trade and Services Indices
Head of the Section: Konstantinos Thomas
Tel: +30 213 135 2048
Fax: +30 213 135 2714
E-mail: k.thomas@statistics.gr

Information for data provision:

Tel: +30 213 135 2022. 2308. 2310
e-mail: data.dissem@statistics.gr

Graph 2: Evolution of seasonally and non seasonally adjusted Turnover Index in Wholesale Trade (2015=100.0)



It should be noted, that the timeseries of the seasonally adjusted index is recalculated every time a new observation is added and could differ from 100 for the base year, as seasonal effect is not the same each year. Therefore, the seasonally adjusted data differ from the published data of the Press Release of the previous quarter.

Table 1. Evolution of Turnover Index in Wholesale Trade
(Data adjusted for working days)

Base year: 2015=100.0

Year / Quarter		Indices	Annual Rates of Change (%)	Quarterly Rates of Change (%)	Seasonally Adjusted Indices	Quarterly Rates of Change (%)
2015	Q1	97.8	-0.9	-5.5	102.7	0.9
	Q2	106.8	-3.3	9.2	101.9	-0.8
	Q3	94.0	-11.3	-11.9	95.8	-6.0
	Q4	101.5	-1.9	8.0	100.0	4.4
Annual average		100.0	-4.4		100.1	
2016	Q1	93.2	-4.7	-8.2	97.2	-2.8
	Q2	102.9	-3.6	10.5	98.4	1.3
	Q3	96.6	2.8	-6.1	98.4	0.0
	Q4	100.8	-0.7	4.3	99.8	1.4
Annual average		98.4	-1.6		98.5	
2017	Q1	100.0	7.4	-0.8	103.7	3.9
	Q2	105.4	2.4	5.4	101.1	-2.5
	Q3	99.4	2.9	-5.7	100.6	-0.6
	Q4	103.3	2.5	4.0	103.0	2.4
Annual average		102.0	3.7		102.1	
2018	Q1	102.8	2.7	-0.6	106.9	3.8
	Q2	112.4	6.6	9.4	108.0	1.0
	Q3	111.7	12.4	-0.6	111.6	3.4
	Q4	109.0	5.5	-2.4	108.8	-2.6
Annual average		109.0	6.9		108.8	
2019	Q1	101.5	-1.3	-6.9	106.3	-2.3
	Q2	111.2	-1.1	9.6	107.1	0.8
	*Q3	108.6	-2.8	-2.3	108.0	0.8
	**Q4	107.5	-1.4	-1.0	107.3	-0.7
** Annual average		107.2	-1.7		107.2	

* Revised data

** Provisional data

Note: The indices and the percentage changes are published rounded up to one decimal digit.

METHODOLOGICAL NOTES

Generally	The Wholesale Turnover Index is a quarterly index, which was first released in 2006, with base year (b.y.) the year 2005=100.0.
Purpose of the index – definitions	The purpose of this index is to measure in value terms the activity of wholesale trade in the market. The turnover excludes VAT and comprises the totals invoiced by the enterprise during the reference period (quarter), which correspond to sales of goods or services supplied to third parties.
Legal framework	The compilation of the wholesale turnover index is governed by the Council Regulation (EC) No.1165/98 of 19 th May 1998 concerning “Short Term Statistics” and by the Regulation (EC) No 1158/05 of the European Parliament and Council, amending the original Regulation 1165/98. Additionally, the compilation of the above index is governed by the Regulation 1893/2006 of the European Parliament and of the Council of 20 th December 2006, establishing the statistical classification of economic activities NACE Rev.2.
Reference period	Quarter.
Base year	2015=100.0.
Revision	Pursuant to the provisions of Council Regulation 1165/98 concerning “Short Term Statistics”, the index is revised every five (5) years, in years ending in 0 or 5. The purpose of revising the wholesale turnover index is to adapt the index to recent developments as regards the structure of wholesale trade.
Statistical classification	The NACE Rev.2 statistical classification of economic activities is used, in conformity with the Regulation (EC) 1893/2006 of the Council and of the European Parliament.
Geographical coverage	The index covers the whole of the country with data coming from 54 Regional Units.
Coverage of economic activities	The index covers the division 46 (wholesale trade, except of motor vehicles and motorcycles) of NACE Rev.2 statistical classification of economic activities.
Statistical survey	The index includes 15,911 wholesale trade enterprises, with an annual turnover (in year 2015) equal or greater than 300,000€, from which a random representative sample of 520 enterprises was therefore selected and surveyed.
Calculating the indices	The index is calculated by the implementation of the chaining method. The index is reduced to a typical quarter of equal duration by multiplying the turnover estimates for the current quarter by an appropriate correction coefficient. This factor is calculated through the division of the average quarterly number of working days for the current year by the number of regular working days of the examined quarter.
Seasonal Adjustment	Seasonal adjustment is the procedure followed to remove the impact of seasonality on the time series (after eliminating the seasonal effects, e.g: the beginning of the school year, holidays, tourist period, etc) in order to improve the comparability over time. The method applied is the TRAMO-SEATS with the use of JDemetra+ 2.0.0. The whole timeseries of the seasonally adjusted index is recalculated every time a new observation is added into the timeseries.
Compiled index series	The timeseries of the index are compiled from the 1 st quarter 2000 with base year 2015=100.0.
Publication of data	The wholesale turnover Index (b.y. 2015=100.0) is released quarterly since the 3 rd quarter 2018, with retrospective data from the 1 st quarter 2000.
References	More information on the methodology for compiling and calculating the Wholesale Turnover Index, as well as on the timeseries of the index, can be found on ELSTAT’s website: http://www.statistics.gr/en/statistics/-/publication/DKT42/