



HELLENIC REPUBLIC
HELLENIC STATISTICAL AUTHORITY

Piraeus, 29 September 2021

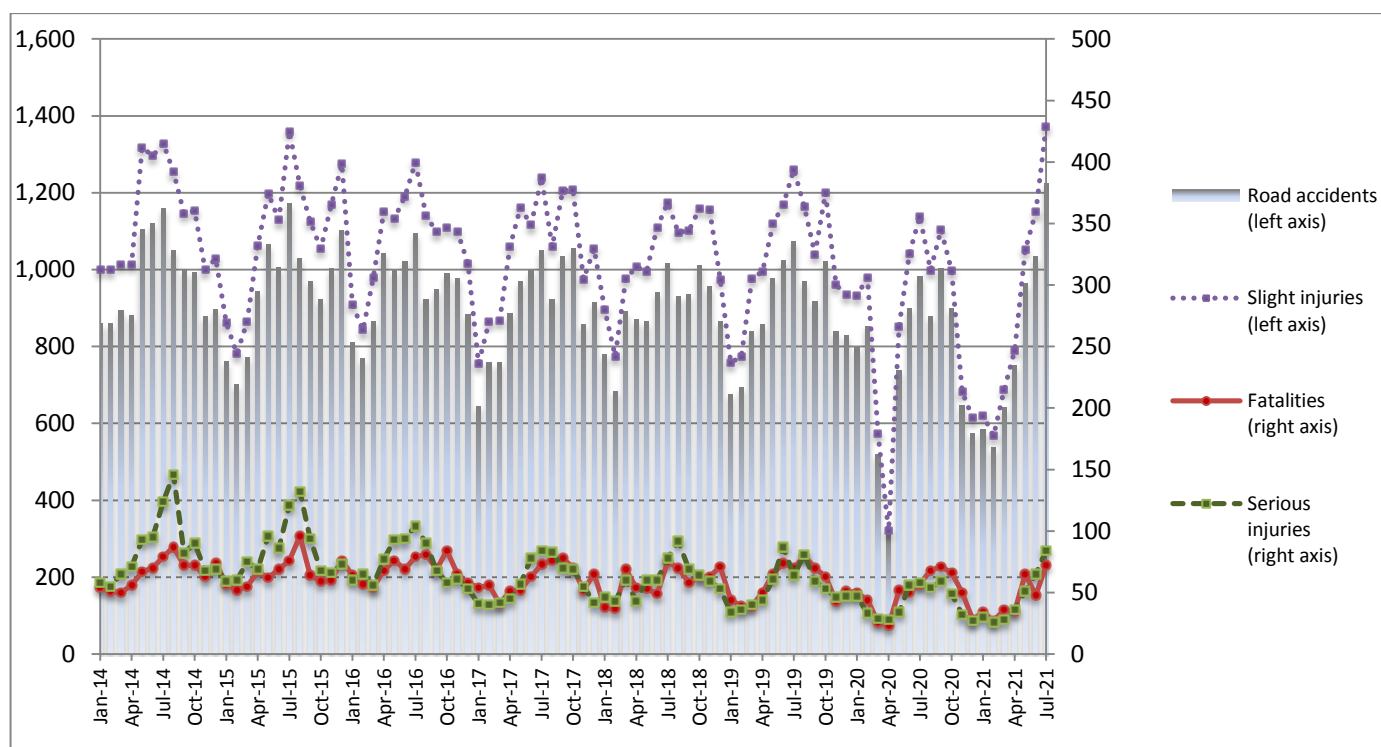
PRESS RELEASE

ROAD TRAFFIC ACCIDENTS: July 2021

The Hellenic Statistical Authority (ELSTAT) announces provisional¹ data from the survey on “Road Traffic Accidents” for July 2021. In particular, the road traffic accidents which occurred in Greece, resulting in death or injury, increased by 24.5% in comparison with the corresponding month of 2020 (1,223 road accidents in July 2021, against 982 road accidents in July 2020).

The casualties of the injury-causing accidents that occurred in July 2021 were as follows: 72 deaths, 84 serious injuries and 1,371 slight injuries. In contrast, in July 2020 the corresponding figures were: 57 deaths, 58 serious injuries and 1,139 slight injuries. Therefore, road traffic accident casualties in July 2021 increased by 26.3% for deaths, by 44.8% for serious injuries and by 20.4% for slight injuries.

**Graph 1: Road traffic accidents and casualties,
January 2014 - July 2021**



Provisional data for the period September 2020 – July 2021

Information on methodological issues:

Sectoral Statistics Division
Transport Statistics Section
P. Tzortzi, L. Miliara
Tel: +30 213 135 2187, +30 213 135 3095
e-mail: p.tzortzi@statistics.gr, l.miliara@statistics.gr

Information for data provision:

Tel: +30 213 135 2022, 2308, 2310
e-mail: data.dissem@statistics.gr

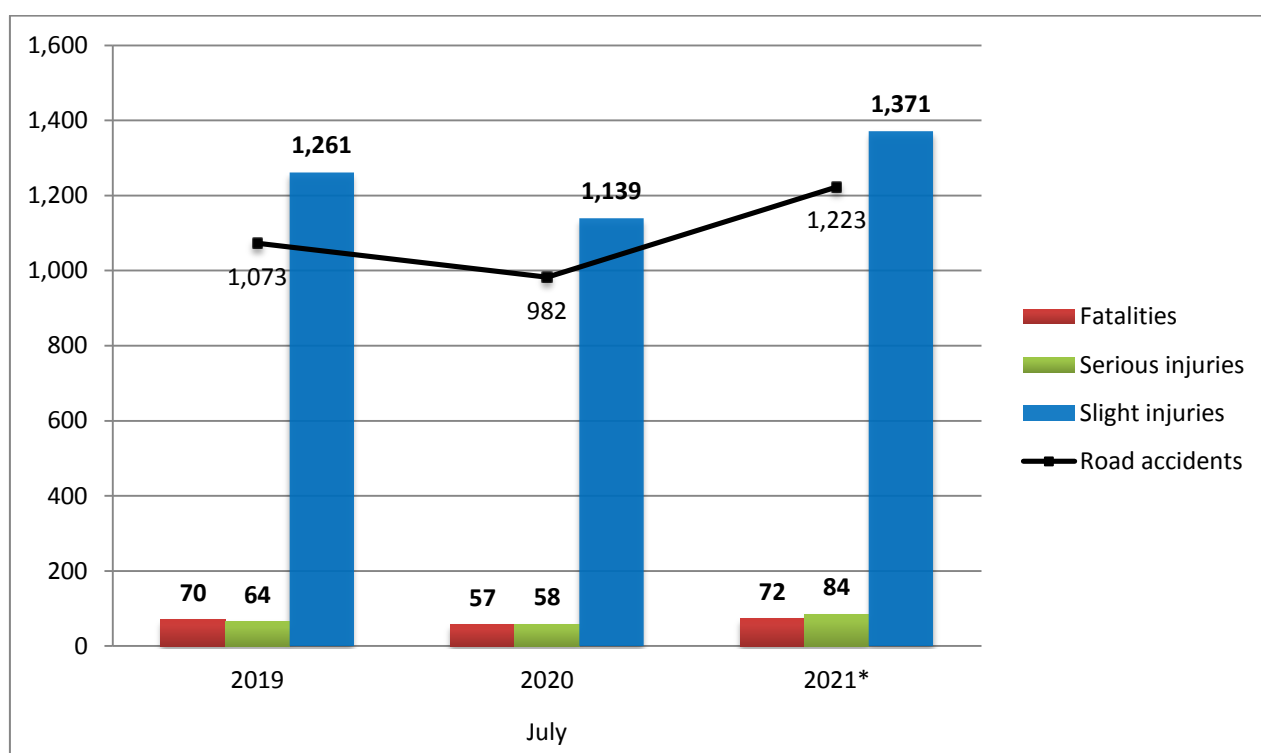
^[1] Data for the reference year is provisional until the finalization of the annual data, which takes place 10 months after the end of the reference year and is published in the corresponding press release of the following year. During these 10 months the provisional data is updated on the basis of the data of the Road Accident Forms of that year which is transmitted to ELSTAT by Police Authorities (see explanatory notes).

Table 1: Road traffic accidents and casualties, July 2019 - 2021*

	July				
	2019	2020	2020/2019 (%)	2021*	2021*/2020 (%)
Road accidents	1,073	982	-8.5	1,223	24.5
Fatalities	70	57	-18.6	72	26.3
Total injuries	1,325	1,197	-9.7	1,455	21.6
Serious injuries	64	58	-9.4	84	44.8
Slight injuries	1,261	1,139	-9.7	1,371	20.4

* Provisional data

Graph 2: Road traffic accidents and casualties, July 2019 - 2021*



* Provisional data

Table 2: Road traffic accidents and casualties, by region and department, July 2020 and 2021*

Region and department	Road accidents			Fatalities			Serious injuries			Slight injuries		
	2020	2021*	%	2020	2021*	%	2020	2021*	%	2020	2021*	%
Greece Total	982	1,223	24.5	57	72	26.3	58	84	44.8	1,139	1,371	20.4
Anatoliki Makedonia and Thraki (East Macedonia and Thrace)	36	44	22.2	1	8	700.0	5	11	120.0	40	47	17.5
Drama	9	10	11.1	0	1		0	0		13	9	
Evros	7	12	71.4	0	1		0	2		7	16	
Kavala	12	9	-25.0	1	4		2	1		12	10	
Xanthi	6	9	50.0	0	2		2	8		7	6	
Rodopi	2	4	100.0	0	0		1	0		1	6	
Kentriki Makedonia (Central Macedonia)	174	217	24.7	16	9	-43.8	6	9	50.0	190	273	43.7
Imathia	7	3	-57.1	1	0		0	0		8	3	
Thessaloniki	121	166	37.2	6	5		3	5		132	211	
Kilkis	6	9	50.0	0	0		1	0		6	12	
Pella	9	7	-22.2	1	1		1	0		10	7	
Pieria	7	2	-71.4	3	0		0	0		8	2	
Serres	4	7	75.0	2	1		1	2		2	6	
Chalkidiki	20	23	15.0	3	2		0	2		24	32	
Dytiki Makedonia (West Macedonia)	4	9	125.0	0	2	-	2	3	50.0	3	6	100.0
Grevena	0	0	-	0	0		0	0		0	0	
Kastoria	0	2	-	0	1		0	1		0	1	
Kozani	4	6	50.0	0	1		2	2		3	4	
Florina	0	1	-	0	0		0	0		0	1	
Ipeiros (Epirus)	18	11	-38.9	4	4	0.0	4	3	-25.0	18	11	-38.9
Arta	2	2	0.0	1	0		0	2		1	0	
Thesprotia	6	2	-66.7	0	2		1	1		9	5	
Ioannina	7	5	-28.6	2	1		2	0		6	4	
Preveza	3	2	-33.3	1	1		1	0		2	2	
Thessalia (Thessaly)	31	33	6.5	4	6	50.0	11	6	-45.5	20	32	60.0
Karditsa	5	6	20.0	0	1		1	1		4	6	
Larissa	9	14	55.6	1	3		5	5		5	13	
Magnissia	9	7	-22.2	2	1		2	0		7	8	
Trikala	8	6	-25.0	1	1		3	0		4	5	
Ionian Nisia (Ionian Islands)	17	31	82.4	1	4	300.0	2	0	-100.0	19	33	73.7
Zakynthos	5	8	60.0	0	0		2	0		8	8	
Kerkyra	3	7	133.3	1	0		0	0		2	10	
Kefallinia	0	9	-	0	3		0	0		0	8	
Lefkada	9	7	-22.2	0	1		0	0		9	7	

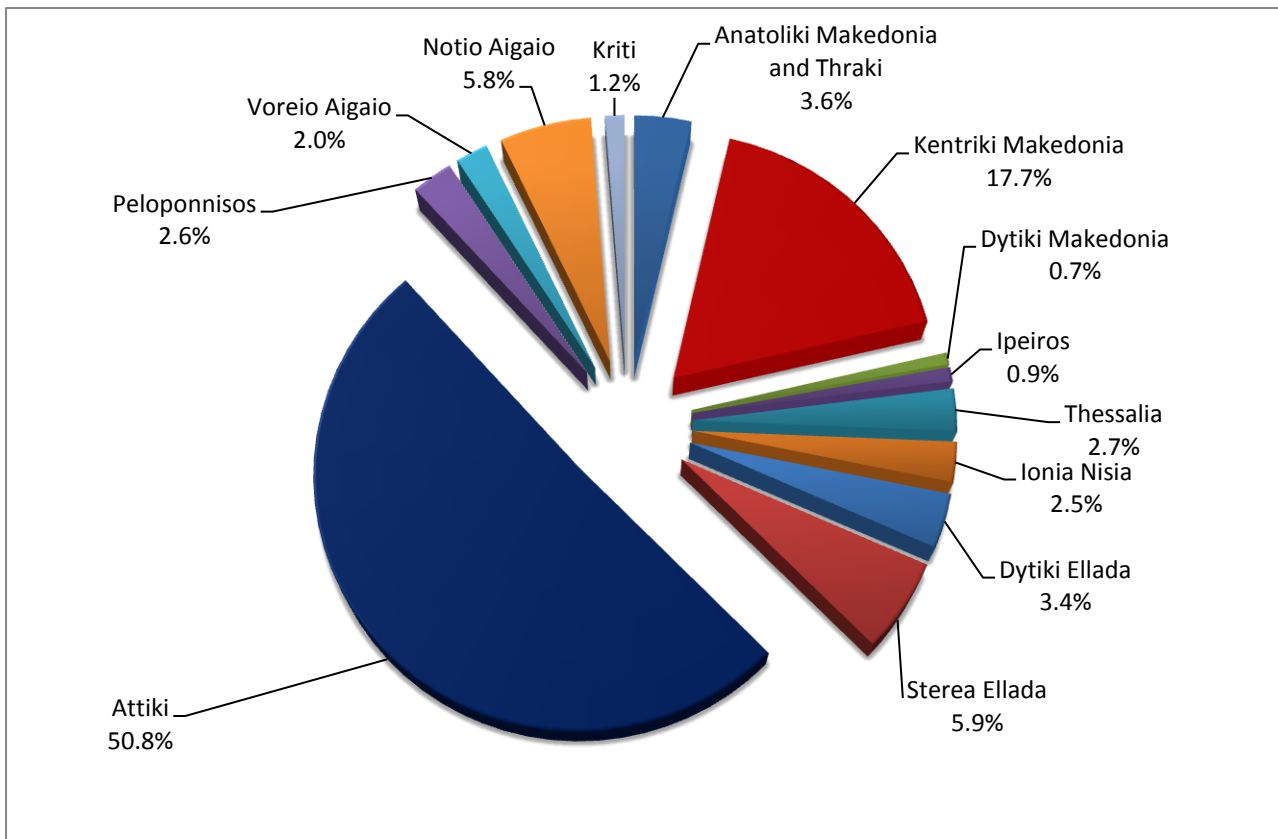
* Provisional data

Table 2: Road traffic accidents and casualties, by region and department, July 2020 and 2021* (Continued)

Region and department	Road accidents			Fatalities			Serious injuries			Slight injuries		
	2020	2021*	%	2020	2021*	%	2020	2021*	%	2020	2021*	%
Dytiki Ellada (West Greece)	42	42	0.0	4	3	-25.0	2	7	250.0	57	44	-22.8
Etolia & Akarnania	14	15	7.1	0	2		0	2		24	16	
Achaia	23	22	-4.3	2	1		1	4		30	24	
Ilia	5	5	0.0	2	0		1	1		3	4	
Sterea Ellada	47	72	53.2	4	3	-25.0	2	8	300.0	67	81	20.9
Viotia	6	16	166.7	0	1		1	2		12	16	
Evia	29	36	24.1	2	1		1	3		37	41	
Evrytania	1	3	200.0	0	0		0	1		2	3	
Fthiotida	10	14	40.0	2	0		0	0		14	18	
Fokida	1	3	200.0	0	1		0	2		2	3	
Attiki (Attica)	492	621	26.2	11	18	63.6	9	20	122.2	585	683	16.8
Peloponnisos (Peloponnese)	40	32	-20.0	3	4	33.3	3	1	-66.7	50	38	-24.0
Argolida	6	6	0.0	1	1		0	0		8	8	
Arkadia	2	9	350.0	0	1		0	0		2	10	
Korinthia	19	11	-42.1	0	2		1	1		24	9	
Lakonia	3	2	-33.3	1	0		0	0		6	5	
Messinia	10	4	-60.0	1	0		2	0		10	6	
Voreio Aigaio (North Aegean)	15	25	66.7	0	0	-	0	1	-	25	35	40.0
Lesvos	7	12	71.4	0	0		0	1		15	15	
Samos	4	9	125.0	0	0		0	0		5	14	
Chios	4	4	0.0	0	0		0	0		5	6	
Notio Aigaio (South Aegean)	45	71	57.8	2	4	100.0	8	13	62.5	46	76	65.2
Dodekanissos	14	27	92.9	1	4		0	7		13	23	
Kyklades	31	44	41.9	1	0		8	6		33	53	
Kriti (Crete)	21	15	-28.6	7	7	0.0	4	2	-50.0	19	12	-36.8
Iraklio	11	7	-36.4	2	3		2	2		10	6	
Lassithi	3	3	0.0	2	1		0	0		3	3	
Rethymno	3	1	-66.7	1	1		0	0		2	0	
Chania	4	4	0.0	2	2		2	0		4	3	

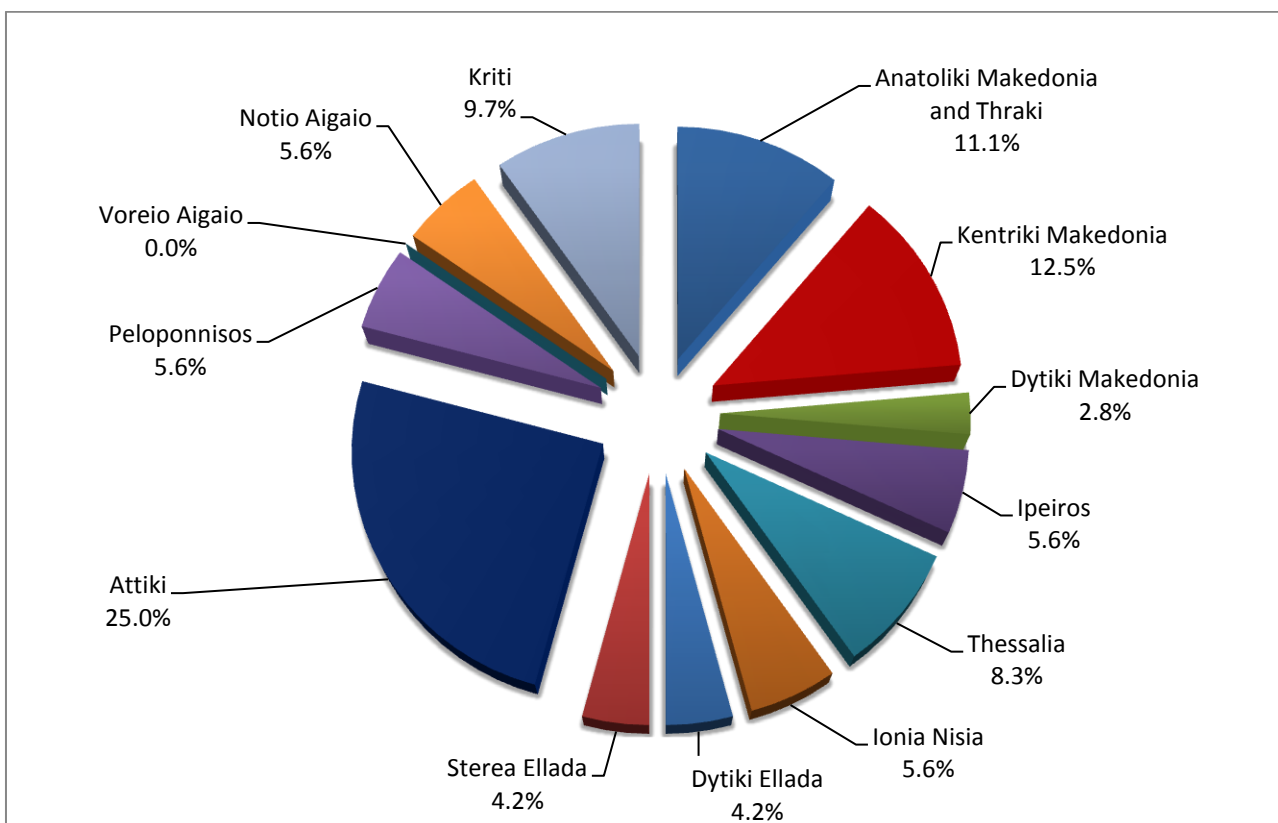
* Provisional data

Graph 3: Road traffic accidents by region, July 2021 *



* Provisional data

Graph 4: Fatalities by region, July 2021 *



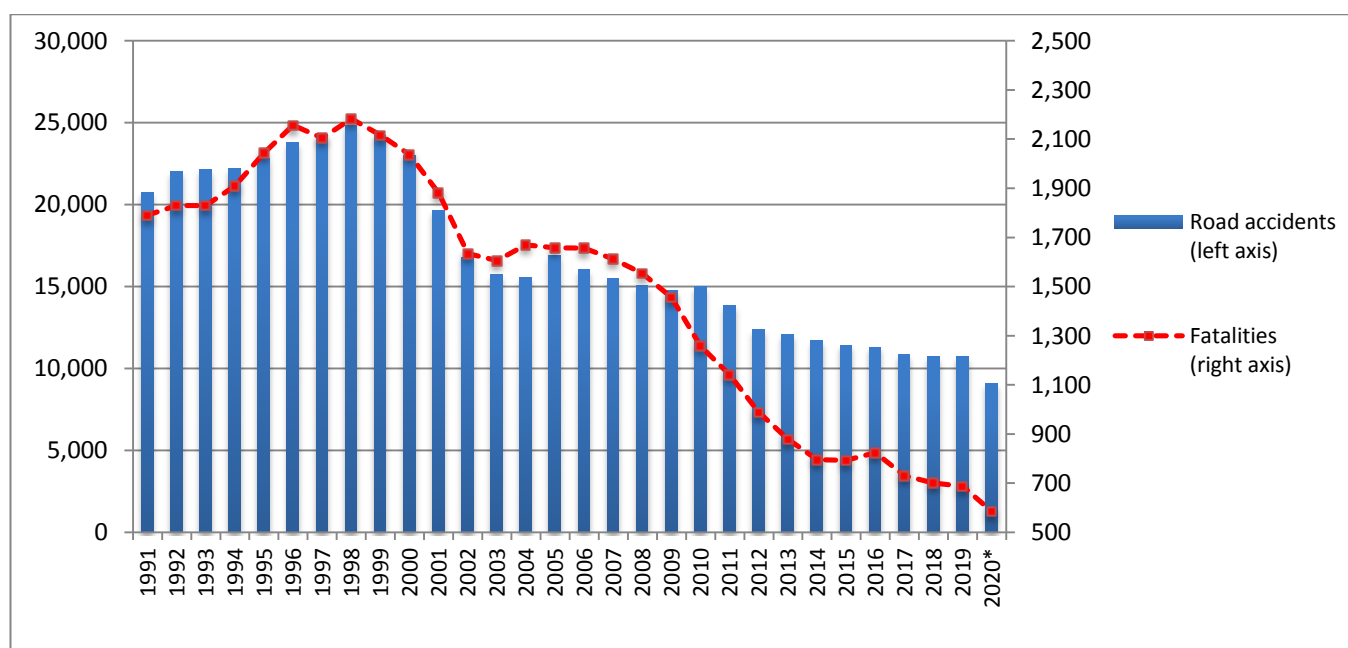
* Provisional data

Table 3: Road traffic accidents and casualties for the period January - July 2019, 2020 and 2021*

	2019		2020		2021 *
	January - July	Total year	January - July	Total year*	January - July
Road Accidents	6,139	10,712	5,098	9,098	5,731
Annual Change (%)			-17.0	-15.1	12.4
Fatalities	381	688	302	585	317
Annual Change (%)			-20.7	-15.0	5.0
Serious injuries	366	652	285	506	320
Annual Change (%)			-22.1	-22.4	12.3
Slight injuries	7,053	12,350	5,840	10,235	6,239
Annual Change (%)			-17.2	-17.1	6.8

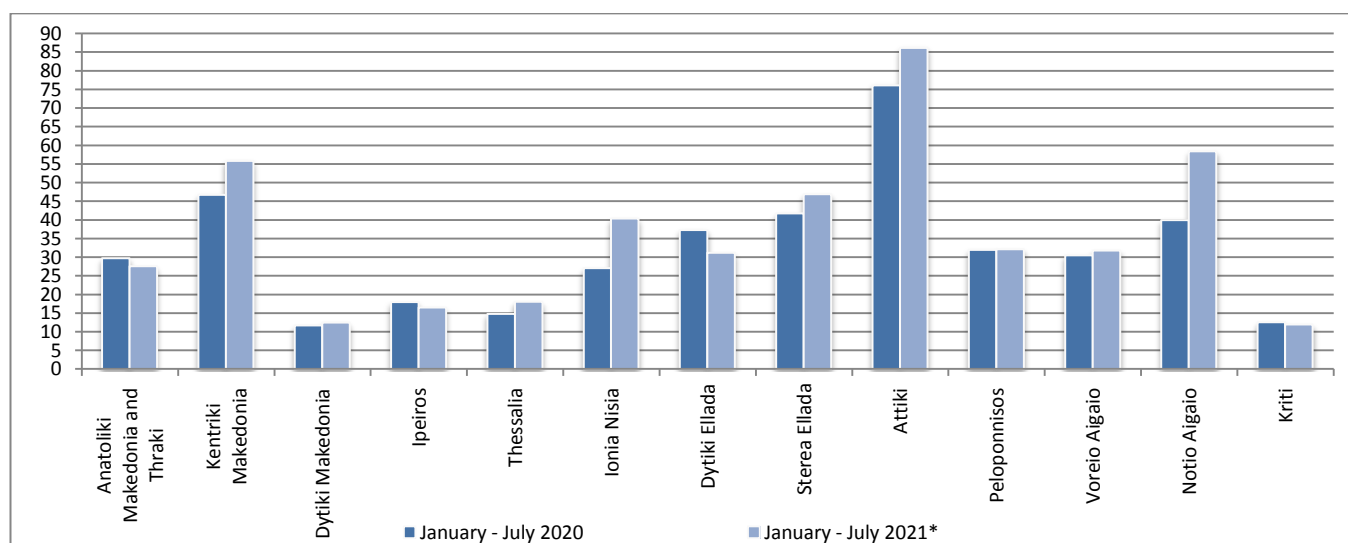
* Provisional data

Graph 5: Total road traffic accidents and fatalities, 1991-2020*



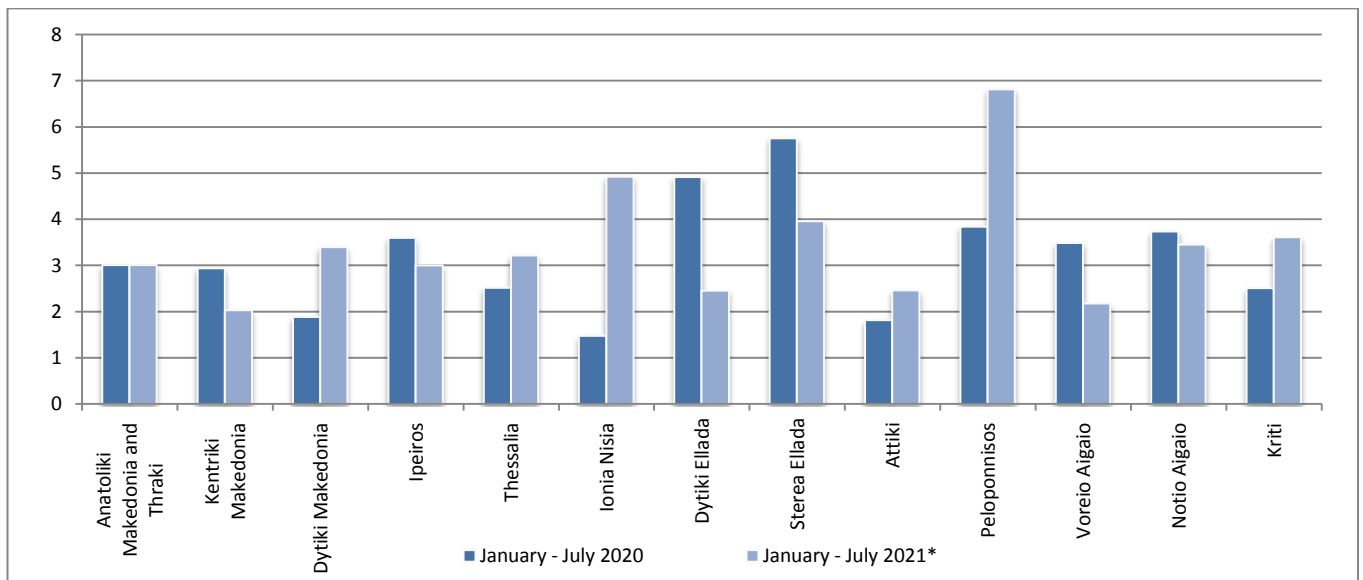
* Provisional data for the period September 2020 – December 2020

Graph 6: Road traffic accidents per 100,000 inhabitants for the period January - July 2020 and 2021*

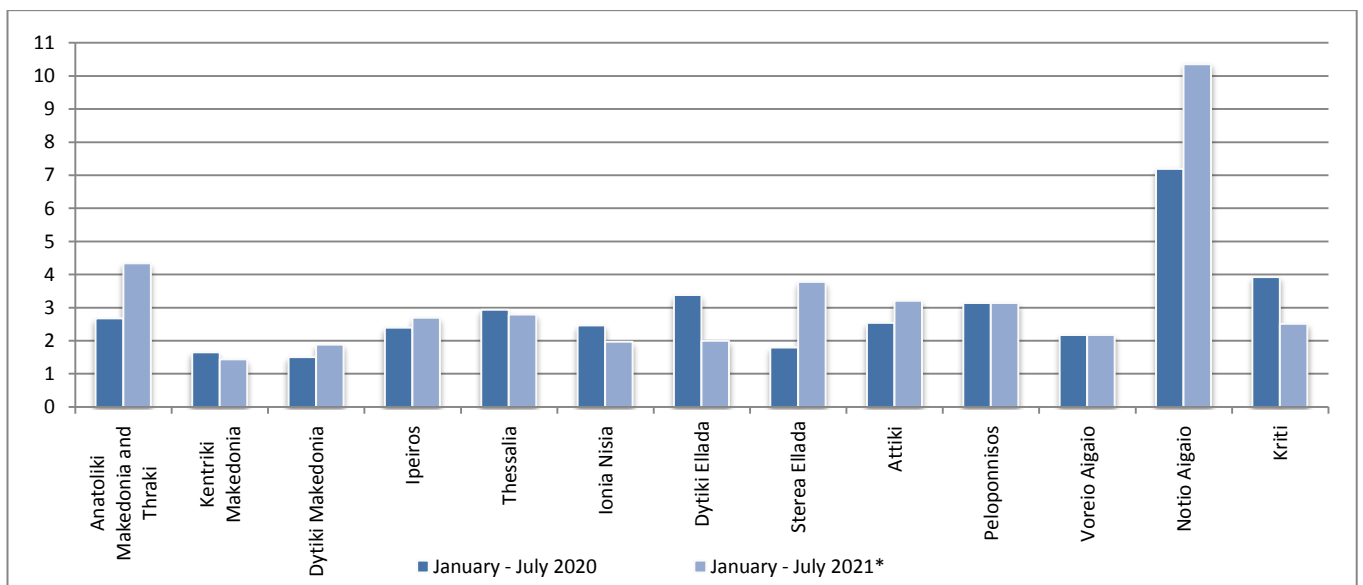


* Provisional data

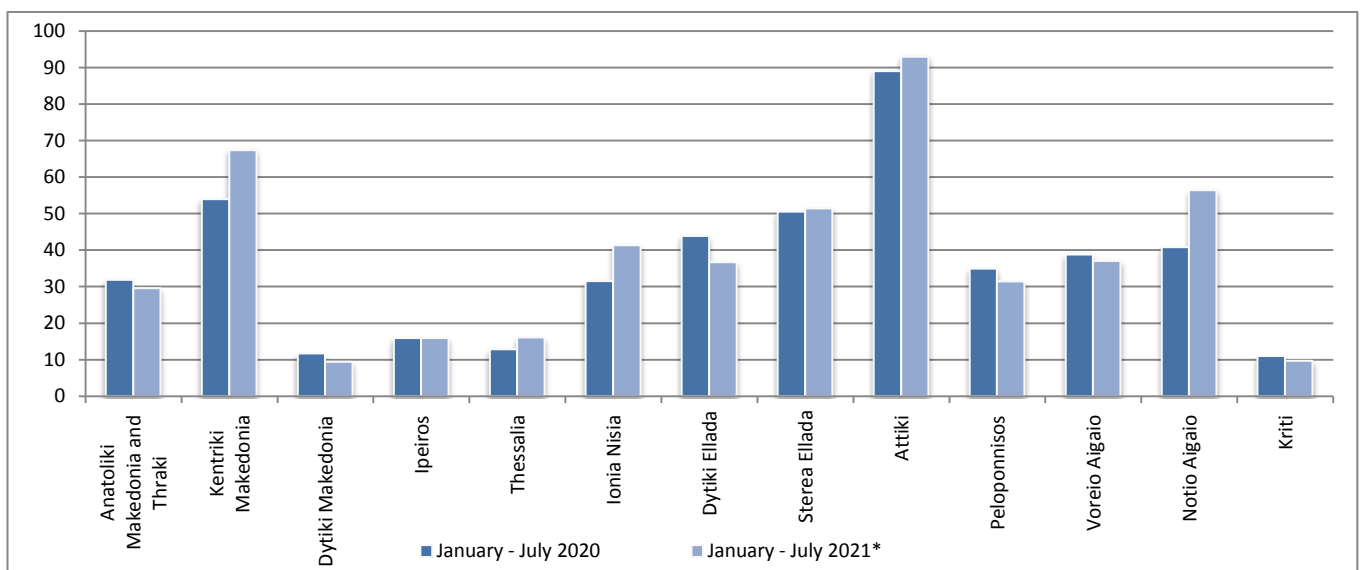
Graph 7: Fatalities per 100,000 inhabitants for the period January - July 2020 and 2021*



Graph 8: Serious injuries per 100,000 inhabitants for the period January - July 2020 and 2021*



Graph 9: Slight injuries per 100,000 inhabitants for the period January - July 2020 and 2021*



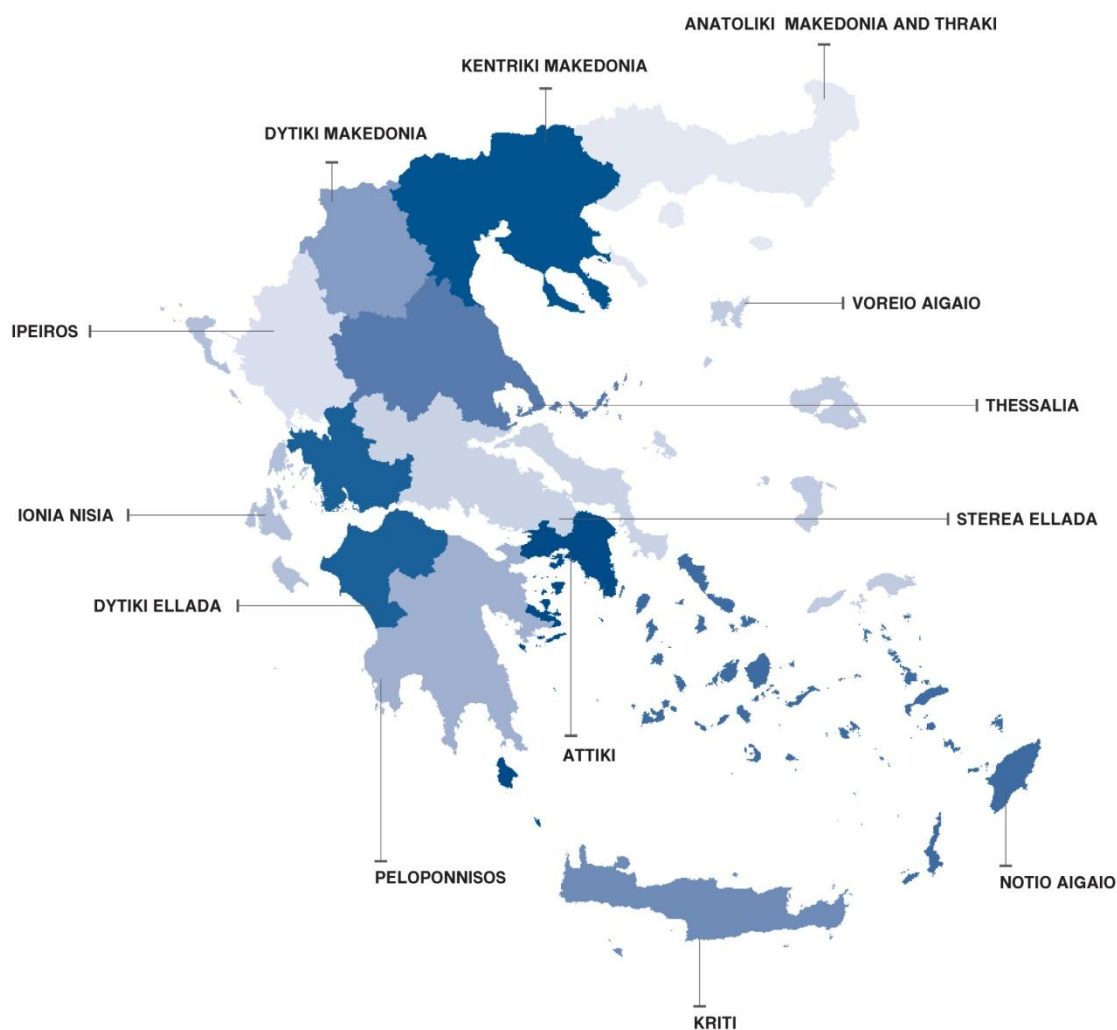
* Provisional data

EXPLANATORY NOTES

Survey on Road Traffic Accidents The Survey on Road Traffic Accidents is conducted on a monthly basis and it records, for each region (see map) and department of Greece and for each month separately, the number of accidents resulting in death or injury, as well as the number of persons injured by categories (drivers, passengers, pedestrians).

On a yearly basis, road traffic accidents are further analyzed. The competent agencies for filling in/collecting the forms on road accidents are the local Police Authorities and the local Port Authorities of Greece.

The lower level of analysis for the place where an injury road accident occurred is the settlement. Data are collected on a monthly basis. The main variables are the following: place of accident, kind of road, casualties, conditions of road surface and type of road.



Legal basis The Survey on Road Traffic Accidents is governed by Council Decision 93/704 of the European Community.

Reference period Monthly.

Availability of data Provisional data are available 2 months after the reference month.
Final data are available 10 months after the reference year.

Definitions **Road accident** (injury accident): Any accident involving at least one road motor vehicle in motion on a public road or square to which the public has access (excluding yards, industrial sites or vehicle depot of public transport enterprises), resulting in at least one injured or killed person. Accidents with only material damages are not included.

Fatality (Death): Any person killed immediately or dying within 30 days as a result of an injury accident (This national definition applies since 01.01.1996)

Person injured: Any person who sustained an injury as result of an injury accident, and who normally needs medical treatment.

Serious injury: Any person who sustained an injury as result of an injury accident, such as brain damages, mutilation, multiple injuries, which may result in lack of awareness or which are life-threatening.

Slight injury: Any person injured who sustained minor and not life-threatening injuries.

Vehicle: Include motor vehicles, trolleybuses, motorcycles, bicycles, motorbikes, agricultural and road making machines, animal and hand-drawn vehicles. Railway vehicles are excluded, unless the road accident involves at least one of the aforementioned types of vehicles and therefore, railway vehicles are considered vehicles.

Methodology The forms of the survey are filled in by the local Police Authorities and the local Port Authorities as well.

References More information about Road Traffic Accidents is available on ELSTAT's website and more specifically at the link: <https://www.statistics.gr/en/statistics/-/publication/SDT03/->.