



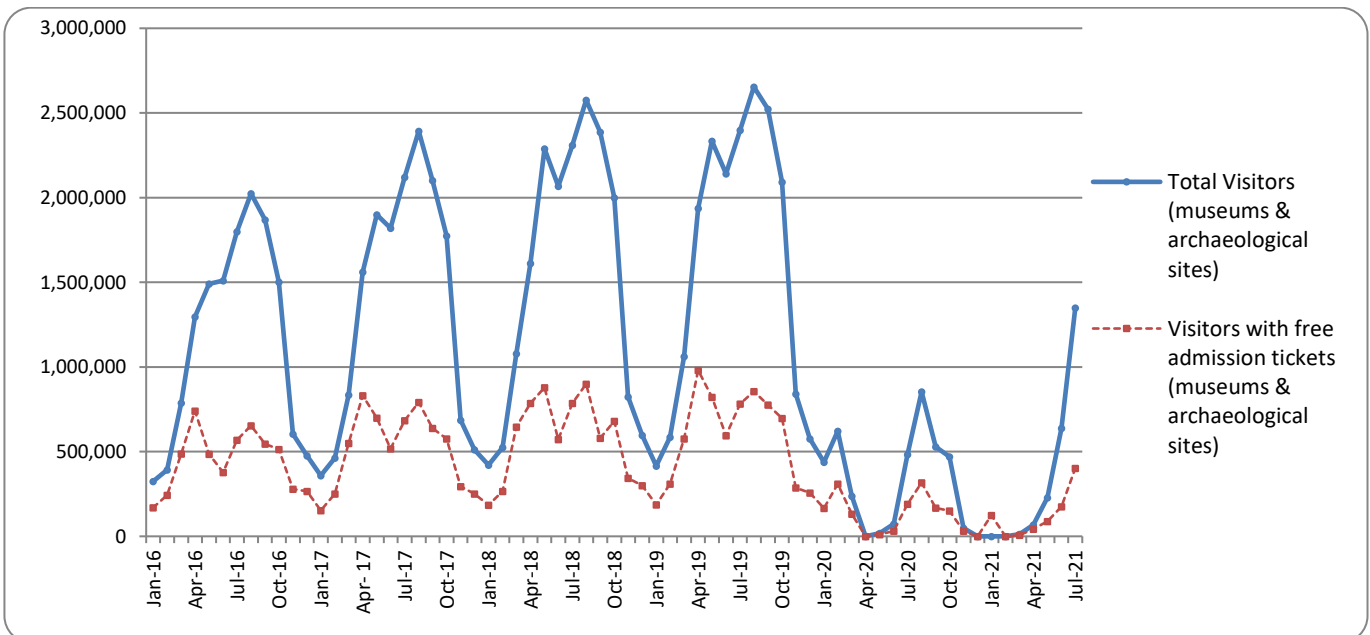
## PRESS RELEASE

### SURVEY ON MUSEUMS AND ARCHAEOLOGICAL SITES ATTENDANCE JULY 2021

The Hellenic Statistical Authority (ELSTAT) announces the results of the *Survey on Museums and Archaeological Sites Attendance* for July 2021. More specifically:

- During July 2021, compared with the corresponding period of June 2020, Museums recorded a 203.7% increase in the number of visitors and a 152.6% increase in the number of free admission visitors as well as a 263.5% increase in their receipts (Table 1).
- In July 2021 compared with the corresponding month of 2020, the number of visitors at Archaeological sites recorded an increase of 171.4%, while an increase of 97.5% was observed in the number of free admission visitors and an increase of 250.0% was observed in the corresponding receipts (Table 1).
- During the seven month period from January to July 2021, compared to the corresponding period of 2020, a decrease of 6.3% was observed in the number of visitors of Museums and a decrease of 31.5% was recorded in the number of free admission visitors while an 81.7% increase was observed in the relevant receipts, given the suspension of operation, from March 14<sup>th</sup> until June 16<sup>th</sup> 2020 and again gradually from November 1<sup>st</sup> 2020 until May 13<sup>th</sup> 2021, in the framework of the preventative measures against the Covid-19 pandemic (Table 2).
- As regards Archaeological sites, during the seven month period from January to July 2021, compared to the corresponding period of 2020, an increase of 38.5% was recorded in the number of visitors, while a decrease of 3.5% was observed in the number of free admission visitors and an increase of 122.0% was observed in the relevant receipts, given the suspension of operation of Archaeological sites from March 14<sup>th</sup> until May 17<sup>th</sup> 2020 and from November 7<sup>th</sup> 2020 until March 21<sup>st</sup> 2021 (Table 2).

**Graph 1: Visitors of Museums and Archaeological sites (January 2016 – July 2021)**



**Information on methodological issues:**

Sectoral Statistics Division  
Tourism and Cultural Statistics Section  
Head of the Section: Asimina Katri  
Tel: +30 213 135 2168  
e-mail: [a.katri@statistics.gr](mailto:a.katri@statistics.gr)

**Information for data provision:**

Tel. +30 213 135 2022, 2308, 2310  
e-mail: [data.dissem@statistics.gr](mailto:data.dissem@statistics.gr)

**TABLE 1: VISITORS OF MUSEUMS AND ARCHAEOLOGICAL SITES - TOTAL RECEIPTS  
(JULY 2020 & JULY 2021)**

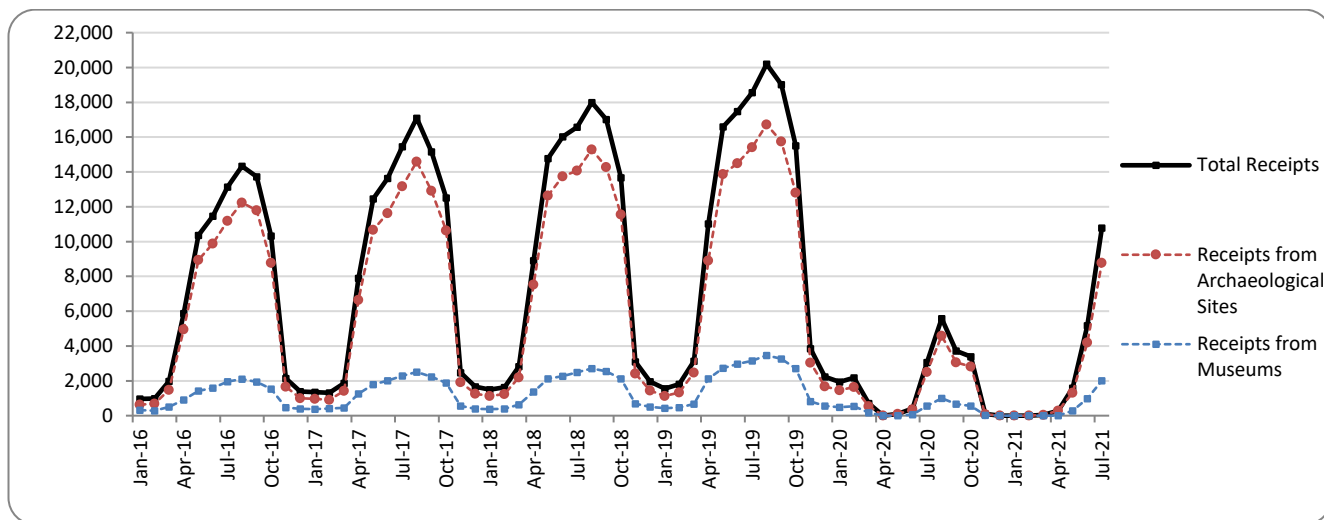
<b>I. NUMBER OF VISITORS</b>			
<b>Museums and Archaeological sites</b>	<b>2020 <sup>(2)</sup></b>	<b>2021 <sup>(2)</sup></b>	<b>Change 2021/2020</b>
<b>Total number of visitors (A+B)</b>	<b>483,276</b>	<b>1,349,701</b>	<b>179.3%</b>
<b>A. Museums (C+E)</b>	<b>117,905</b>	<b>358,044</b>	<b>203.7%</b>
Acropolis Museum	30,059	98,659	228.2%
National Archaeological	5,179	32,147	520.7%
Ancient Olympia	2,764	6,999	153.2%
Palace of the Grand Master (Rhodes)	8,640	27,225	215.1%
Herakleion Archaeological (Crete)	9,365	25,648	173.9%
White Tower	5,875	13,469	129.3%
Delphi	3,788	9,717	156.5%
Other museums	52,235	144,180	176.0%
<b>B. Archaeological Sites (D+F)</b>	<b>365,371</b>	<b>991,657</b>	<b>171.4%</b>
Epidavros <sup>(1)</sup>	13,728	34,610	152.1%
The Acropolis of Mycenae & Atreus' Treasure	10,274	27,807	170.7%
The Acropolis of Athens	59,683	218,660	266.4%
Sounio	11,047	26,095	136.2%
The Acropolis of Lindos	31,441	73,460	133.6%
Royal Tombs of Vergina	3,711	9,198	147.9%
Ancient Olympia	11,287	27,266	141.6%
Knossos (Crete)	33,860	95,880	183.2%
Phaistos (Crete)	5,130	9,234	80.0%
Ancient Korinthos <sup>(1)</sup>	3,044	9,395	208.6%
Mystras <sup>(1)</sup>	5,562	15,065	170.9%
Delphi	7,587	24,825	227.2%
Other archaeological sites	169,017	420,162	148.6%
<b>II. VISITORS WHO PAID TICKET</b>			
	<b>2020 <sup>(2)</sup></b>	<b>2021 <sup>(2)</sup></b>	<b>Change 2021/2020</b>
<b>Total number of visitors who paid ticket (C+D)</b>	<b>293,511</b>	<b>947,946</b>	<b>223.0%</b>
C. Museums	69,034	234,588	239.8%
D. Archaeological sites	224,477	713,358	217.8%
<b>III. VISITORS WITH FREE ADMISSION TICKETS</b>			
	<b>2020 <sup>(2)</sup></b>	<b>2021 <sup>(2)</sup></b>	<b>Change 2021/2020</b>
<b>Total number of visitors with free admission ticket (E+F)</b>	<b>189,765</b>	<b>401,755</b>	<b>111.7%</b>
E. Museums	48,871	123,456	152.6%
F. Archaeological sites	140,894	278,299	97.5%
<b>IV. RECEIPTS (euros)</b>			
	<b>2020 <sup>(2)</sup></b>	<b>2021 <sup>(2)</sup></b>	<b>Change 2021/2020</b>
<b>Total Receipts (G+H)</b>	<b>3,061,583</b>	<b>10,791,452</b>	<b>252.5%</b>
G. Museums	553,144	2,010,818	263.5%
H. Archaeological sites	2,508,439	8,780,634	250.0%

<sup>(1)</sup> Flat rate ticket, valid both for the museum and the archaeological site.

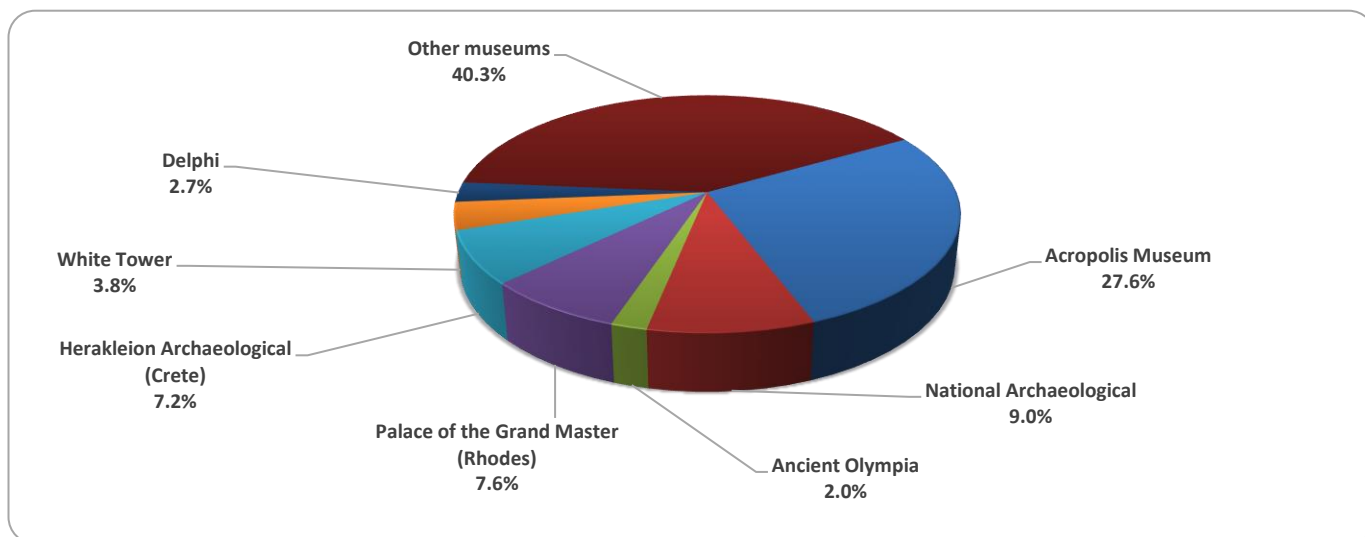
<sup>(2)</sup> The operation of Museums was suspended from March 14<sup>th</sup> until June 16<sup>th</sup> 2020 and again gradually from November 1<sup>st</sup> 2020 until May 13<sup>th</sup> 2021. The operation of Archaeological Sites was suspended March 14<sup>th</sup> until May 17<sup>th</sup> 2020 and from November 7<sup>th</sup> 2020 until March 21<sup>st</sup> 2021, in the framework of the preventative measures against the Covid-19 pandemic.

The following graphs depict the evolution of the receipts of Museums and Archaeological Sites (Graph 2), as well as the number of visitors by Archaeological Sites (Graph 3).

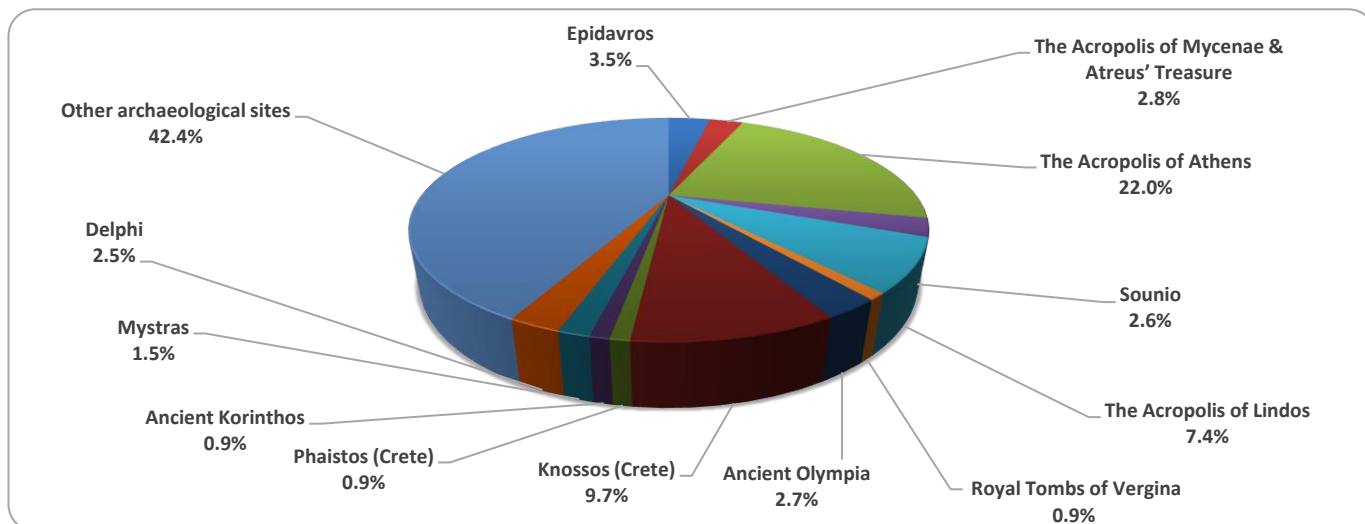
**Graph 2: Receipts from Museums and Archaeological Sites (January 2016 – July 2021)**  
(in thousand euro)



**Graph 3: Percentage distribution of visitors by Museum, July 2021**



**Graph 4: Percentage distribution of visitors by Archaeological site, July 2021**



**TABLE 2: VISITORS OF MUSEUMS AND ARCHAEOLOGICAL SITES - TOTAL RECEIPTS  
(2019, 2020, JANUARY-JULY 2020, 2021)**

<b>I. VISITORS</b>					
Museums and Archaeological sites	2019	2020 <sup>(2)</sup>	JANUARY-JULY		change 2021/2020
			2020 <sup>(2)</sup>	2021 <sup>(2)</sup>	
<b>Total number of visitors (A+B)</b>	<b>19,559,278</b>	<b>3,772,828</b>	<b>1,871,060</b>	<b>2,298,129</b>	<b>22.8%</b>
<b>A. Museums (C+E)</b>	<b>5,895,927</b>	<b>1,100,904</b>	<b>655,432</b>	<b>614,352</b>	<b>-6.3%</b>
Acropolis Museum	1,755,435	325,969	218,406	163,122	-25.3%
National Archaeological	608,876	98,175	67,124	50,666	-24.5%
Ancient Olympia	159,348	21,956	11,110	10,555	-5.0%
Palace of the Grand Master (Rhodes)	263,958	54,572	13,659	40,412	195.9%
Herakleion Archaeological (Crete)	660,533	63,027	28,846	39,174	35.8%
White Tower	251,760	62,007	43,259	24,571	-43.2%
Delphi	275,993	41,984	26,773	15,971	-40.3%
Other museums	1,920,024	433,214	246,255	269,881	9.6%
<b>B. Archaeological Sites (D+F)</b>	<b>13,663,351</b>	<b>2,671,924</b>	<b>1,215,628</b>	<b>1,683,777</b>	<b>38.5%</b>
Epidavros <sup>(1)</sup>	535,751	103,532	45,850	55,441	20.9%
The Acropolis of Mycenae & Atreus' Treasure	502,619	78,839	42,172	43,831	3.9%
The Acropolis of Athens	3,593,586	620,132	374,520	395,001	5.5%
Sounio	337,544	100,319	55,276	70,181	27.0%
The Acropolis of Lindos	525,757	156,462	34,085	110,123	223.1%
Royal Tombs of Vergina	223,151	37,586	23,433	15,727	-32.9%
Ancient Olympia	457,710	64,759	28,093	45,262	61.1%
Knossos (Crete)	949,192	175,927	58,955	145,439	146.7%
Phaistos (Crete)	121,796	31,885	14,384	14,233	-1.0%
Ancient Korinthos <sup>(1)</sup>	214,023	31,981	17,298	15,819	-8.6%
Mystras <sup>(1)</sup>	147,713	36,352	14,301	24,179	69.1%
Delphi	405,348	75,983	42,072	41,921	-0.4%
Other archaeological sites	5,649,161	1,158,167	465,189	706,620	51.9%
<b>II. VISITORS WHO PAID TICKET</b>					
	2019	2020 <sup>(2)</sup>	JANUARY-JULY		change 2021/2020
			2020 <sup>(2)</sup>	2021 <sup>(2)</sup>	
<b>Total number of visitors who paid ticket (C+D)</b>	<b>12,434,987</b>	<b>2,268,397</b>	<b>1,032,815</b>	<b>1,581,998</b>	<b>53.2%</b>
C. Museums	3,345,997	605,426	324,929	387,949	19.4%
D. Archaeological sites	9,088,990	1,662,971	707,886	1,194,049	68.7%
<b>III. VISITORS WITH FREE ADMISSION TICKETS</b>					
	2019	2020 <sup>(2)</sup>	JANUARY-JULY		change 2021/2020
			2020 <sup>(2)</sup>	2021 <sup>(2)</sup>	
<b>Total number of visitors with free admission ticket (E+F)</b>	<b>7,124,291</b>	<b>1,504,431</b>	<b>838,245</b>	<b>716,131</b>	<b>-14.6%</b>
E. Museums	2,549,930	495,478	330,503	226,403	-31.5%
F. Archaeological sites	4,574,361	1,008,953	507,742	489,728	-3.5%
<b>IV. RECEIPTS (euros)</b>					
	2019	2020 <sup>(2)</sup>	JANUARY-JULY		change 2021/2020
			2020 <sup>(2)</sup>	2021 <sup>(2)</sup>	
<b>Total Receipts (G+H)</b>	<b>130,938,846</b>	<b>21,176,036</b>	<b>8,383,137</b>	<b>17,886,320</b>	<b>113.4%</b>
G. Museums	23,343,026	4,047,401	1,801,359	3,272,417	81.7%
H. Archaeological sites	107,595,820	17,128,635	6,581,778	14,613,903	122.0%

<sup>(1)</sup> Flat rate ticket, valid both for the museum and the archaeological site.

<sup>(2)</sup> The operation of Museums was suspended from March 14<sup>th</sup> until June 16<sup>th</sup> 2020 and again gradually from November 1<sup>st</sup> 2020 until May 13<sup>th</sup> 2021. The operation of Archaeological Sites was suspended March 14<sup>th</sup> until May 17<sup>th</sup> 2020 and from November 7<sup>th</sup> 2020 until March 21<sup>st</sup> 2021, in the framework of the preventative measures against the Covid-19 pandemic.

## EXPLANATORY NOTES

<b>Survey on Museums and Archaeological Sites Attendance</b>	The Survey on Museums and Archaeological Sites Attendance has been producing results since 1970. The survey collects data from the Hellenic Organization of Cultural Resources Development (HOCRED), supervised by the Ministry of Culture and Sports, on the number of visitors and the receipts from the tickets sold in the Museums and Archaeological sites of the country. The corresponding data for the Acropolis Museum is available from December 2009 onwards.
<b>Legal Framework</b>	The survey is conducted since 1970 on a regular basis and it produces results on a monthly and yearly basis, in compliance with the Joint Ministerial Decision 15189/B379/73.
<b>Reference Period</b>	1/7/2021 έως 31/7/2021
<b>Methodology and Definitions</b>	The survey is conducted on a monthly basis from data mainly collected from the Hellenic Organization of Cultural Resources Development (HOCRED), supervised by the Ministry of Culture and Sports, on the number of visitors and the receipts from the tickets sold in the Museums and Archaeological sites of the Country. ELSTAT tabulates and presents the data for the whole of the Country, by month and by year.  <b>Number of flat rate tickets:</b>  From April 1999 onwards, in some museums and the nearby archaeological sites, in addition to the ordinary ticket, a new “flat rate ticket” was established, which is valid for both the museum and the nearby archaeological site. The total number of these flat rate tickets for <b>July 2021</b> was <b>84,245</b> .
<b>References</b>	More information on the Survey on Museums and Archaeological Sites Attendance and detailed time series are available on: <a href="http://www.statistics.gr/en/statistics/-/publication/SCI21/">http://www.statistics.gr/en/statistics/-/publication/SCI21/</a>