



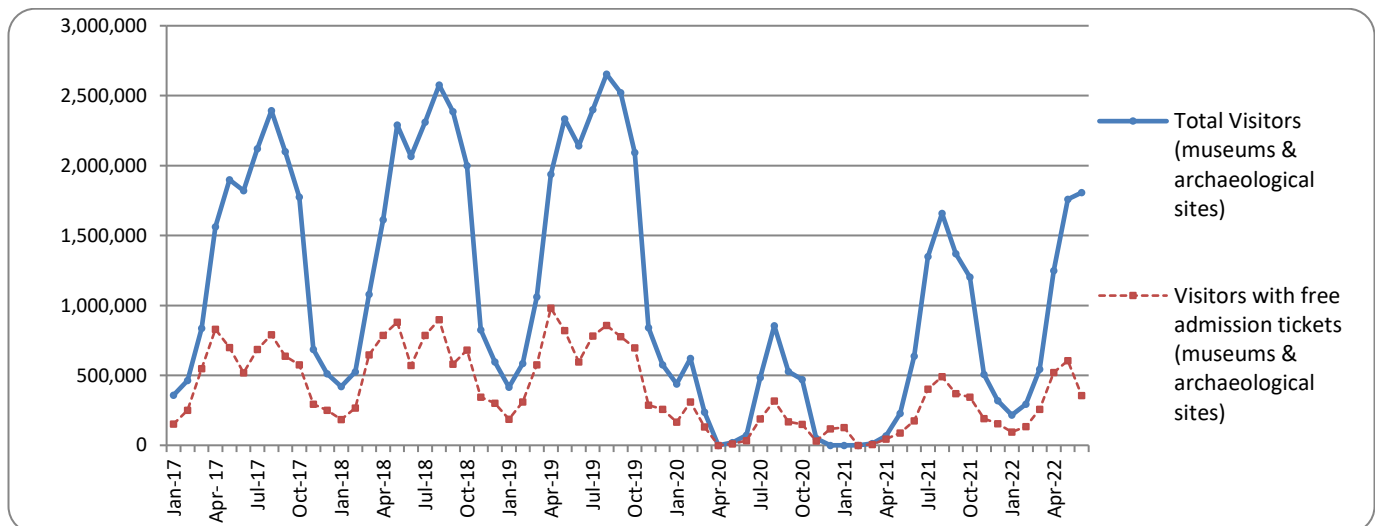
PRESS RELEASE

SURVEY ON MUSEUMS AND ARCHAEOLOGICAL SITES ATTENDANCE JUNE 2022

The Hellenic Statistical Authority (ELSTAT) announces the results of the *Survey on Museums and Archaeological Sites Attendance* for June 2022. More specifically:

- During June 2022 compared with the corresponding month of 2021, Museums recorded a 159.0% increase in the number of visitors and a 74.9% increase in the number of free admission visitors, as well as a 214.0% increase in their receipts (Table 1).
- As regards Archaeological sites, in June 2022 compared with the corresponding month of 2021, an increase of 194.0% was recorded at the number of visitors, of 120.7% in the number of free admission visitors and of 230.2% in the corresponding receipts (Table 1).
- During the six month period from January to June 2022, compared to the corresponding period of 2021, an increase of 607.6% was recorded in the number of visitors, of 627.0% in the number of free admission visitors and of 559.1% in the relevant receipts, given the fact that in the framework of the preventative measures against the Covid-19 pandemic, the operation of the museums was gradually suspended from November 1st 2020 until May 13th 2021 (Table 2).
- As regards Archaeological sites, during the six month period from January to June 2022, compared to the corresponding period of 2021, an increase of 486.3% was recorded in the number of visitors, while an increase of 476.2% was observed in the number of free admission visitors and of 501.3% in the relevant receipts, given the suspension of operation of Archaeological sites from November 7th 2020 until May 13th 2021 (Table 2).

Graph 1: Visitors of Museums and Archaeological sites (January 2017 – June 2022)



Information on methodological issues:

Sectoral Statistics Division
Tourism and Culture Statistics Section
Head of Section: Eleni Papadopoulou
Tel: +30 213 135 2168
e-mail: e.papadopoulou@statistics.gr

Information for data provision:

Tel. +30 213 135 2022, 2308, 2310
e-mail: data.dissem@statistics.gr

**TABLE 1: VISITORS OF MUSEUMS AND ARCHAEOLOGICAL SITES - TOTAL RECEIPTS
(JUNE 2021 & JUNE 2022)**

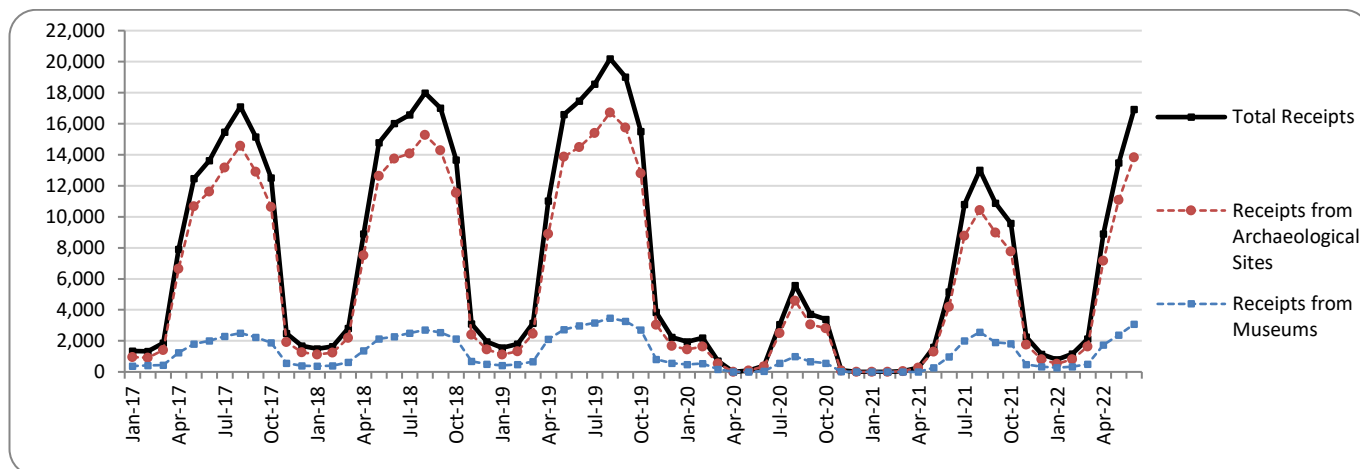
I. NUMBER OF VISITORS			
Museums and Archaeological sites	2021 ⁽²⁾	2022	Change 2022/2021
Total number of visitors (A+B)	637,692	1,807,937	183.5%
A. Museums (C+E)	191,126	495,085	159.0%
Acropolis Museum	50,477	169,792	236.4%
National Archaeological	13,932	48,151	245.6%
Ancient Olympia	2,615	9,698	270.9%
Palace of the Grand Master (Rhodes)	10,009	34,855	248.2%
Herakleion Archaeological (Crete)	10,412	27,828	167.3%
White Tower	6,913	16,834	143.5%
Delphi	4,582	16,183	253.2%
Other museums	92,186	171,744	86.3%
B. Archaeological Sites (D+F)	446,566	1,312,852	194.0%
Epidavros ⁽¹⁾	14,389	43,596	203.0%
The Acropolis of Mycenae & Atreus' Treasure	11,023	38,145	246.0%
The Acropolis of Athens	104,045	360,358	246.3%
Sounio	15,834	37,658	137.8%
The Acropolis of Lindos	29,303	89,545	205.6%
Royal Tombs of Vergina	4,670	17,253	269.4%
Ancient Olympia	12,012	37,366	211.1%
Knossos (Crete)	37,324	105,224	181.9%
Phaistos (Crete)	3,590	9,108	153.7%
Ancient Korinthos ⁽¹⁾	4,276	15,868	271.1%
Mystras ⁽¹⁾	5,916	13,580	129.5%
Delphi	11,881	35,717	200.6%
Other archaeological sites	192,303	509,434	164.9%
II. VISITORS WHO PAID TICKET			
	2021 ⁽²⁾	2022	Change 2022/2021
Total number of visitors who paid ticket (C+D)	461,489	1,452,180	214.7%
C. Museums	118,854	368,706	210.2%
D. Archaeological sites	342,635	1,083,474	216.2%
III. VISITORS WITH FREE ADMISSION TICKETS			
	2021 ⁽²⁾	2022	Change 2022/2021
Total number of visitors with free admission ticket (E+F)	176,203	355,757	101.9%
E. Museums	72,272	126,379	74.9%
F. Archaeological sites	103,931	229,378	120.7%
IV. RECEIPTS (euros)			
	2021 ⁽²⁾	2022	Change 2022/2021
Total Receipts (G+H)	5,174,438	16,925,125	227.1%
G. Museums	982,374	3,084,329	214.0%
H. Archaeological sites	4,192,064	13,840,796	230.2%

⁽¹⁾ Flat rate ticket, valid both for the museum and the archaeological site.

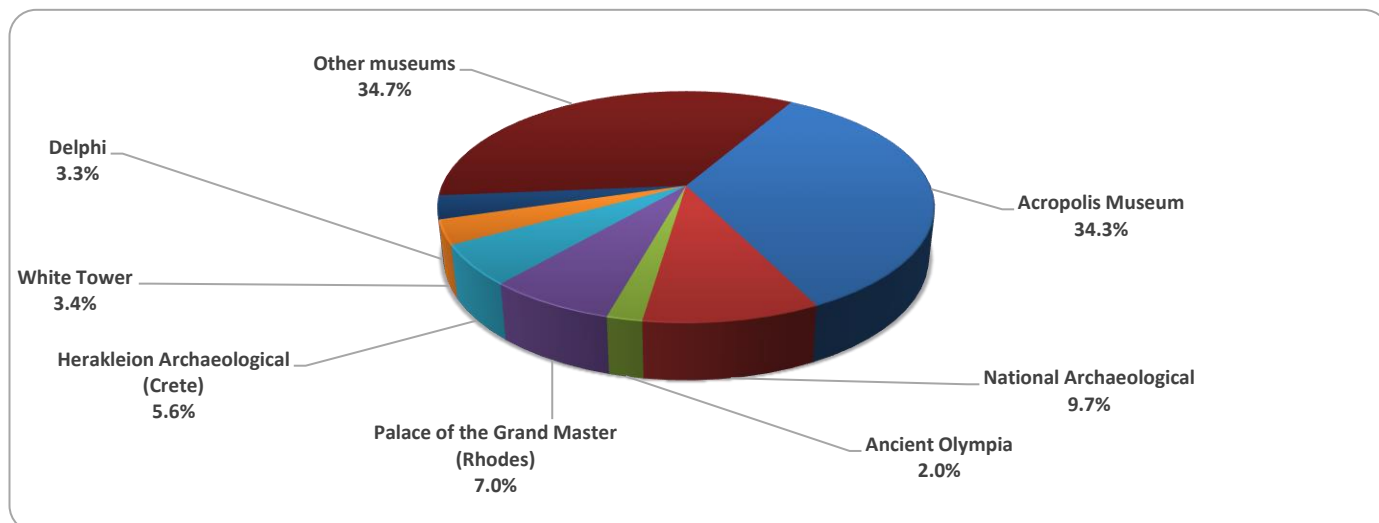
⁽²⁾ The operation of Museums was suspended gradually from November 1st 2020 until May 13th 2021. The operation of Archaeological Sites was suspended from November 7th 2020 until March 21st 2021, in the framework of the preventative measures against the Covid-19 pandemic.

The following graphs depict the evolution of the receipts of Museums and Archaeological Sites (Graph 2), as well as the number of visitors by Museum (Graph 3) and by Archaeological Site (Graph 4).

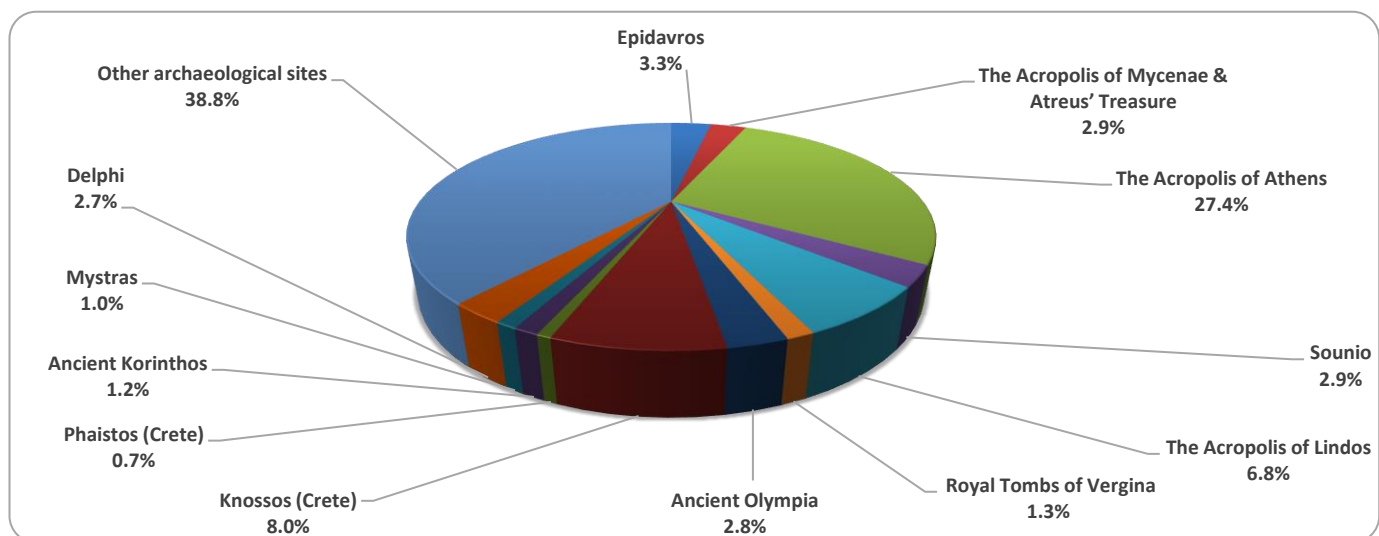
Graph 2: Receipts from Museums and Archaeological Sites (January 2017 – June 2022)
(in thousand euro)



Graph 3: Percentage distribution of visitors by Museum, June 2022



Graph 4: Percentage distribution of visitors by Archaeological site, June 2022



**TABLE 2: VISITORS OF MUSEUMS AND ARCHAEOLOGICAL SITES - TOTAL RECEIPTS
(2020, 2021, JANUARY- JUNE 2021, 2022)**

I. VISITORS					
Museums and Archaeological sites	2020 ⁽²⁾	2021 ⁽²⁾	JANUARY -JUNE		change
			2021 ⁽²⁾	2022	2022/2021
Total number of visitors (A+B)	3,772,828	7,357,026	948,428	5,871,570	519.1%
A. Museums (C+E)	1,100,904	2,047,481	256,308	1,813,604	607.6%
Acropolis Museum	325,969	547,908	64,463	567,951	781.0%
National Archaeological	98,175	189,208	18,519	174,273	841.0%
Ancient Olympia	21,956	34,367	3,556	41,404	1064.3%
Palace of the Grand Master (Rhodes)	54,572	142,530	13,187	81,828	520.5%
Herakleion Archaeological (Crete)	63,027	127,574	13,526	76,321	464.3%
White Tower	62,007	77,983	11,102	69,242	523.7%
Delphi	41,984	58,102	6,254	64,125	925.3%
Other museums	433,214	869,809	125,701	738,460	487.5%
B. Archaeological Sites (D+F)	2,671,924	5,309,545	692,120	4,057,966	486.3%
Epidavros ⁽¹⁾	103,532	182,118	20,831	158,119	659.1%
The Acropolis of Mycenae & Atreus' Treasure	78,839	156,227	16,024	155,702	871.7%
The Acropolis of Athens	620,132	1,219,717	176,341	1,157,506	556.4%
Sounio	100,319	171,348	44,086	137,697	212.3%
The Acropolis of Lindos	156,462	349,418	36,663	188,737	414.8%
Royal Tombs of Vergina	37,586	56,790	6,529	76,122	1065.9%
Ancient Olympia	64,759	143,549	17,996	116,204	545.7%
Knossos (Crete)	175,927	445,160	49,559	260,071	424.8%
Phaistos (Crete)	31,885	48,599	4,999	23,731	374.7%
Ancient Korinthos ⁽¹⁾	31,981	59,271	6,424	61,063	850.5%
Mystras ⁽¹⁾	36,352	78,762	9,114	57,011	525.5%
Delphi	75,983	146,061	17,096	127,784	647.4%
Other archaeological sites	1,158,167	2,252,525	286,458	1,538,219	437.0%
II. VISITORS WHO PAID TICKET					
	2020 ⁽²⁾	2021 ⁽²⁾	JANUARY -JUNE		change
			2021 ⁽²⁾	2022	2022/2021
Total number of visitors who paid ticket (C+D)	2,268,397	5,090,418	634,052	3,904,769	515.8%
C. Museums	605,426	1,289,896	153,361	1,065,161	594.5%
D. Archaeological sites	1,662,971	3,800,522	480,691	2,839,608	490.7%
III. VISITORS WITH FREE ADMISSION TICKETS					
	2020 ⁽²⁾	2021 ⁽²⁾	JANUARY -JUNE		change
			2021 ⁽²⁾	2022	2022/2021
Total number of visitors with free admission ticket (E+F)	1,504,431	2,266,608	314,376	1,966,801	525.6%
E. Museums	495,478	757,585	102,947	748,443	627.0%
F. Archaeological sites	1,008,953	1,509,023	211,429	1,218,358	476.2%
IV. RECEIPTS (euros)					
	2020 ⁽²⁾	2021 ⁽²⁾	JANUARY -JUNE		change
			2021 ⁽²⁾	2022	2022/2021
Total Receipts (G+H)	21,176,036	54,735,194	7,094,868	43,388,494	511.5%
G. Museums	4,047,401	10,385,644	1,261,599	8,315,142	559.1%
H. Archaeological sites	17,128,635	44,349,550	5,833,269	35,073,352	501.3%

⁽¹⁾ Flat rate ticket, valid both for the museum and the archaeological site.

⁽²⁾ The operation of Museums was suspended from March 14th until June 16th 2020 and again gradually from November 1st 2020 until May 13th 2021. The operation of Archaeological Sites was suspended from March 14th until May 17th 2020 and from November 7th 2020 until March 21st 2021, in the framework of the preventative measures against the Covid-19 pandemic.

EXPLANATORY NOTES

Survey on Museums and Archaeological Sites Attendance	The Survey on Museums and Archaeological Sites Attendance has been producing results since 1970. The survey collects data from the Hellenic Organization of Cultural Resources Development (HOCRED), supervised by the Ministry of Culture and Sports, on the number of visitors and the receipts from the tickets sold in the Museums and Archaeological sites of the country. The corresponding data for the Acropolis Museum is available from December 2009 onwards.
Legal Framework	The survey is conducted since 1970 on a regular basis and it produces results on a monthly and yearly basis, in compliance with the Joint Ministerial Decision 15189/B379/73.
Reference Period	1/6/2022 - 30/6/2022
Methodology and Definitions	The survey is conducted on a monthly basis from data mainly collected from the Hellenic Organization of Cultural Resources Development (HOCRED), supervised by the Ministry of Culture and Sports, on the number of visitors and the receipts from the tickets sold in the Museums and Archaeological sites of the Country. ELSTAT tabulates and presents the data for the whole of the Country, by month and by year.
	Number of flat rate tickets: From April 1999 onwards, in some museums and the nearby archaeological sites, in addition to the ordinary ticket, a new “flat rate ticket” was established, which is valid for both the museum and the nearby archaeological site. The total number of these flat rate tickets for June 2022 was 132,081
References	More information on the Survey on Museums and Archaeological Sites Attendance and detailed time series are available on: http://www.statistics.gr/en/statistics/-/publication/SCI21/-