



INDUSTRIAL PRODUCTION INDEX: September 2025, y-o-y increase of 6.8%

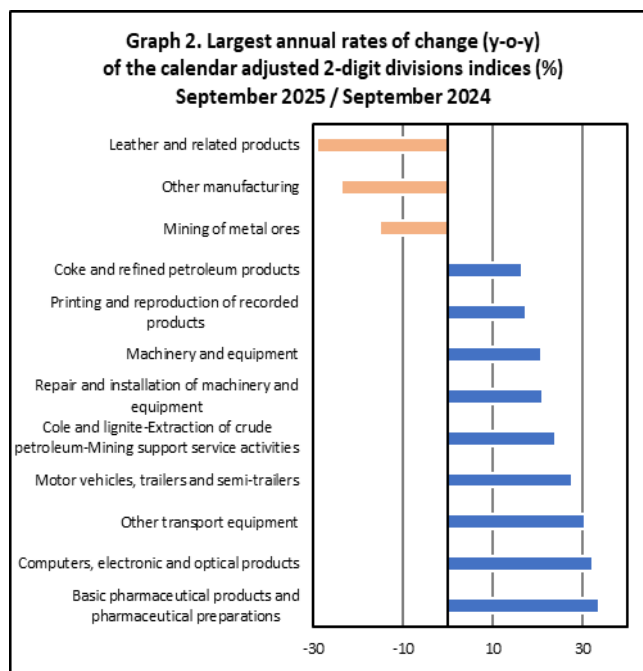
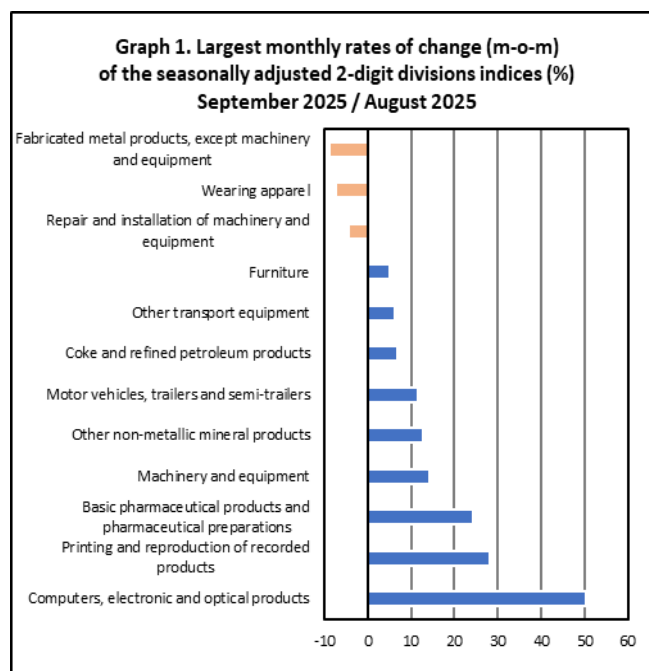
The Hellenic Statistical Authority announces the Industrial Production Index (IPI) with base year 2015=100.0 for September 2025, the evolution of which, on the basis of provisional and working day adjusted data, is as follows:

The Overall Industrial Production Index in September 2025 recorded an increase of 6.8% compared with September 2024. The Overall IPI in September 2024 increased by 2.6% compared with the corresponding index in September 2023 (Table 1).

The average Overall Industrial Production Index for the period from January to September 2025 recorded an increase of 0.7% compared with the average IPI of the period from January to September 2024 (Table 2).

The seasonally adjusted Overall Industrial Production Index in September 2025 recorded an increase of 4.6% compared with the corresponding index of August 2025 (Table 4).

The index of computers, electronic and optical products division showed the greatest percentage increase, whereas the index of fabricated metal products, except machinery and equipment division recorded the greatest percentage decrease in September 2025 compared with August 2025. Comparing the indices of September 2025 with the corresponding indices of September 2024, the greatest percentage increase was recorded in basic pharmaceutical products and pharmaceutical preparations division, while the highest percentage decrease was recorded in leather and related products division (Tables 1 and 4).



Information on methodological issues:

Business Statistics Division
Manufacture-Construction Indices and Industrial Products Section
Head of the Section: Vlachokosta Evrydiki
Tel: +30 213 135 2056
E-mail: e.vlachokosta@statistics.gr

Information on data provision:

Tel: +30 213 135 2024, 2308, 2310
E-mail: data.dissem@statistics.gr

Evolution of the Industrial Production Index in September 2025

I. Annual changes: September 2025 / September 2024 (Table 1)

The 6.8% increase of the working day adjusted Overall IPI in September 2025, compared with the corresponding index in September 2024, is due to the annual changes of the sub-indices in the following industrial sections:

Increase of:

- 7.6% in the Manufacturing Index. The increase was mainly the result of the annual changes of the sub-indices in the following 2-digit divisions: basic pharmaceutical products and pharmaceutical preparations, computers, electronic and optical products, other transport equipment, motor vehicles, trailers and semi-trailers.
- 5.3% in the Electricity Supply Index.
- 2.5% in the Mining and Quarrying Index. The increase was the result of the annual changes of the sub-indices in the 2-digit divisions: mining of coal and lignite – extraction of crude petroleum and natural gas – mining support service activities, other mining and quarrying.

Decrease of:

- 3.0% in the Water Supply Index.

II. Rates of change of the average index of the period January - September 2025 compared with the corresponding index of the period January - September 2024 (Table 2)

The 0.7% increase of the working day adjusted average Overall IPI in the 9-month period January - September 2025, compared with the corresponding index in January - September 2024, is due to the corresponding rates of change of the sub-indices in the following industrial sections:

Increase of:

- 3.8% in the Mining and Quarrying Index.
- 1.3% in the Manufacturing Index.

Decrease of:

- 3.4% in the Water Supply Index.
- 1.2% in the Electricity Supply Index.

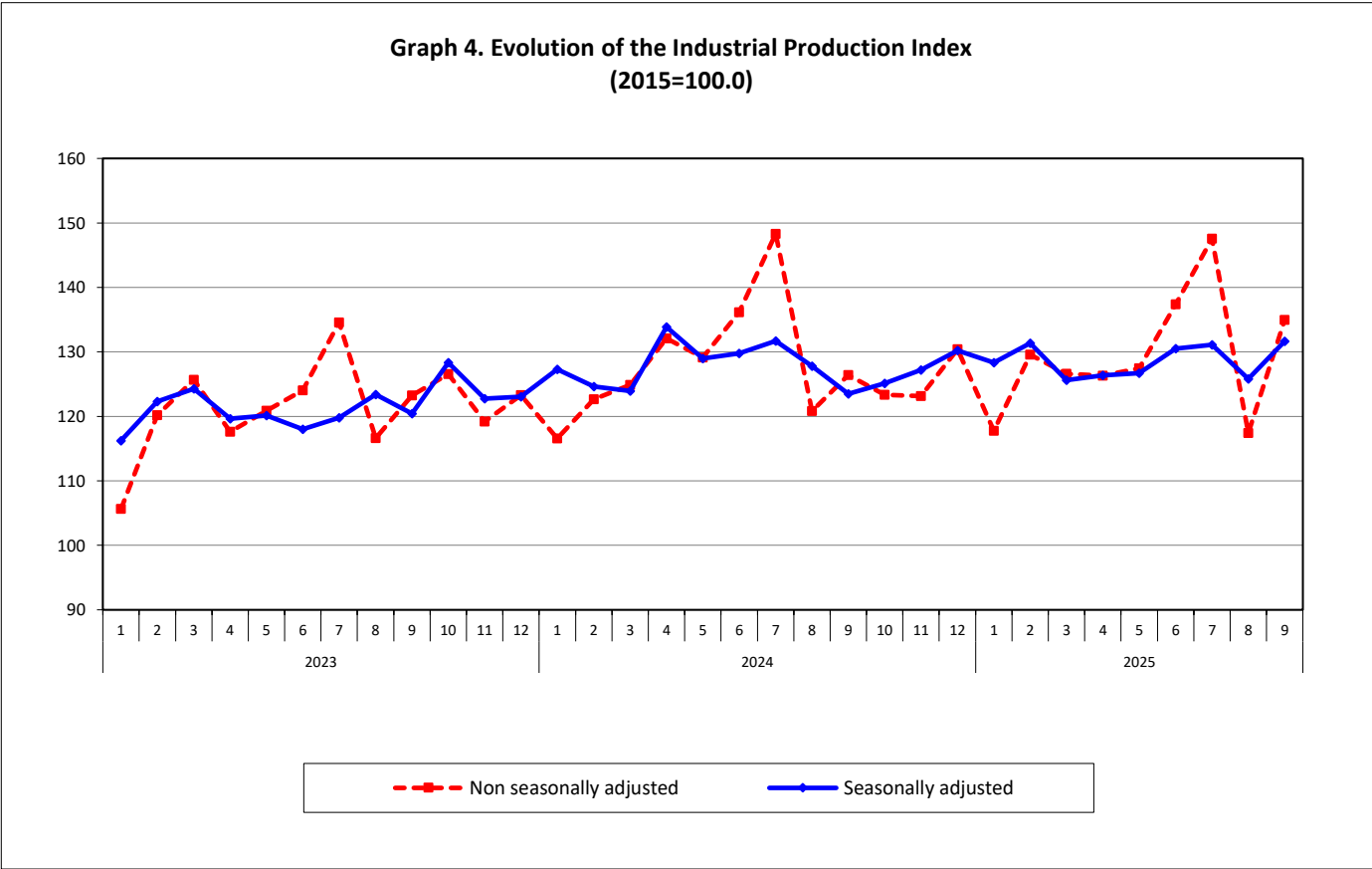
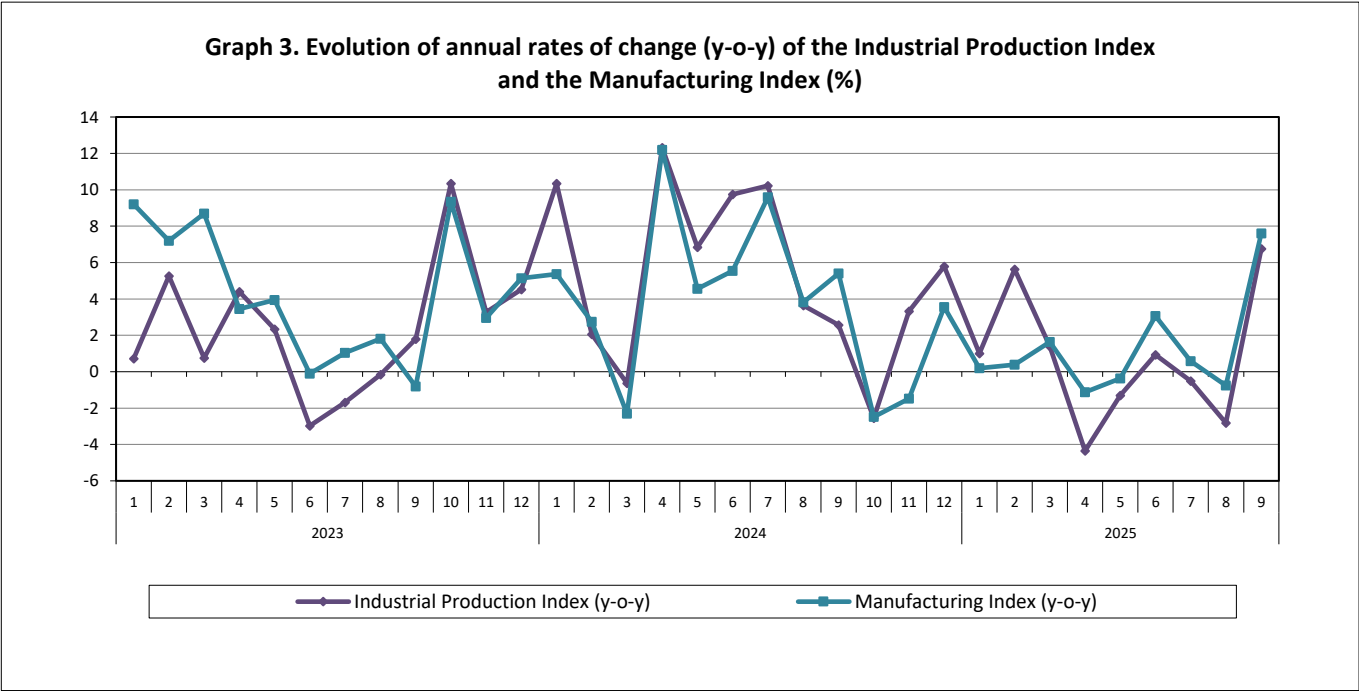
III. Monthly changes: September 2025 / August 2025 (Table 4)

The 4.6% increase of the seasonally adjusted Overall IPI in September 2025, compared with the corresponding index in August 2025, is due to the monthly changes of the sub-indices in the following industrial sections:

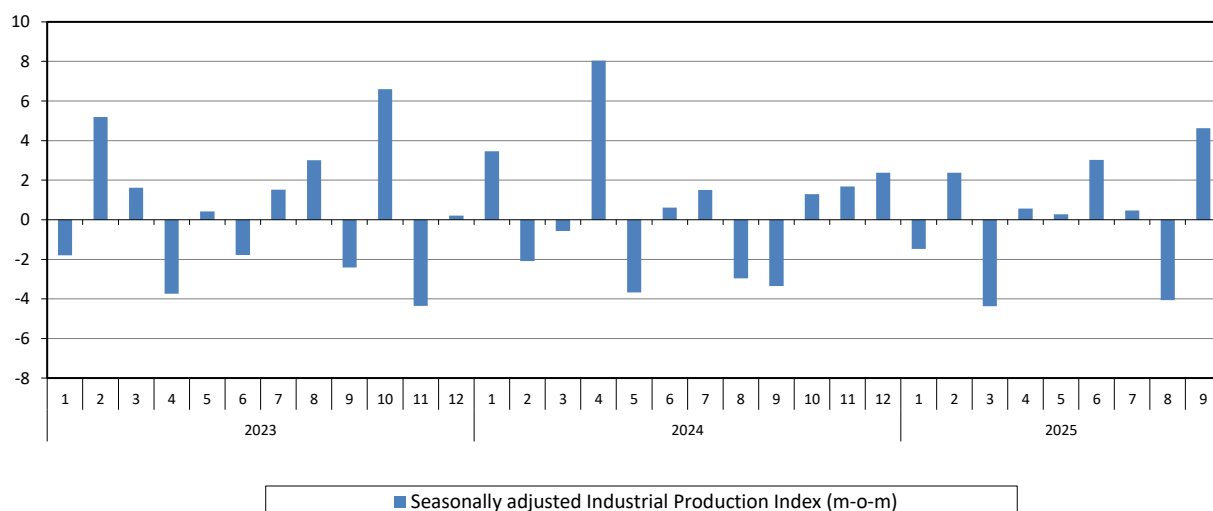
Increase of:

- 6.4% in the Manufacturing Index.
- 3.6% in the Electricity Supply Index.
- 2.3% in the Water Supply Index.
- 1.7% in the Mining and Quarrying Index.

The following graphs depict the annual rates of change (y-o-y) of the Industrial Production Index and the Manufacturing Index, the evolution of the seasonally and non-seasonally adjusted Overall Industrial Production Index, as well as the monthly rates of change (m-o-m) of the seasonally adjusted index.



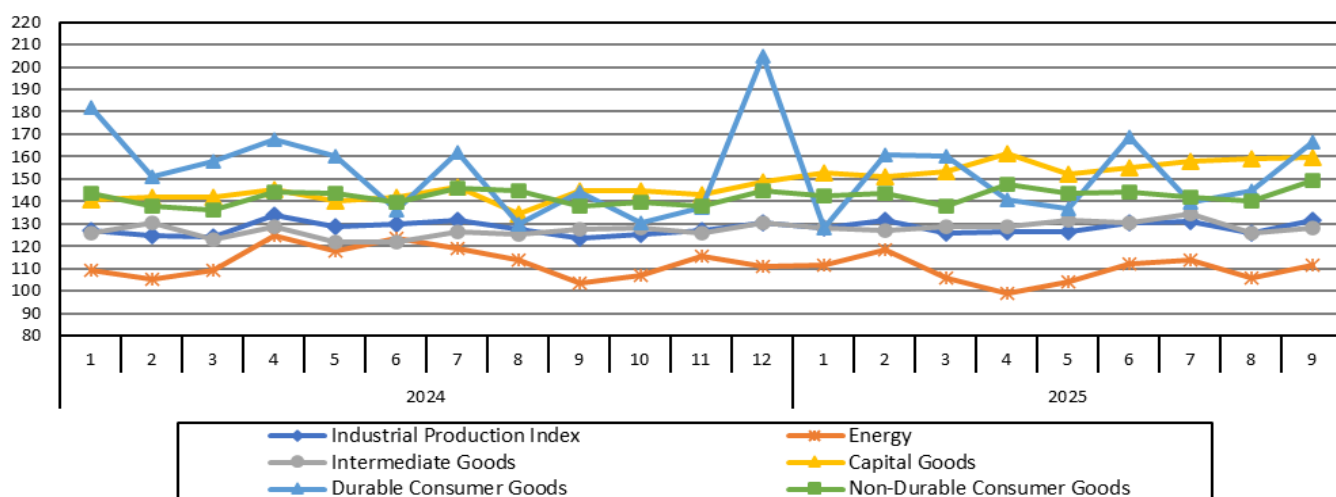
Graph 5. Evolution of the monthly rates of change (m-o-m) of the seasonally adjusted Industrial Production Index (%)



It should be noted that the time series with the seasonally adjusted indices is recalculated every time a new observation is added in the time series. Therefore, the seasonally adjusted data differ from the data published in the previous Announcement.

The following graphs depict the evolution of the seasonally adjusted Industrial Production Index and the Main Industrial Groupings, as well as the evolution of the Industrial Production Index and the Industrial Sections Indices.

Graph 6. Evolution of the seasonally adjusted Industrial Production Index and the Main Industrial Groupings Indices, January 2024 - September 2025 (2015=100.0)



**Graph 7. Evolution of the Industrial Production Index and the Industrial Section Indices
(2015=100.0)**

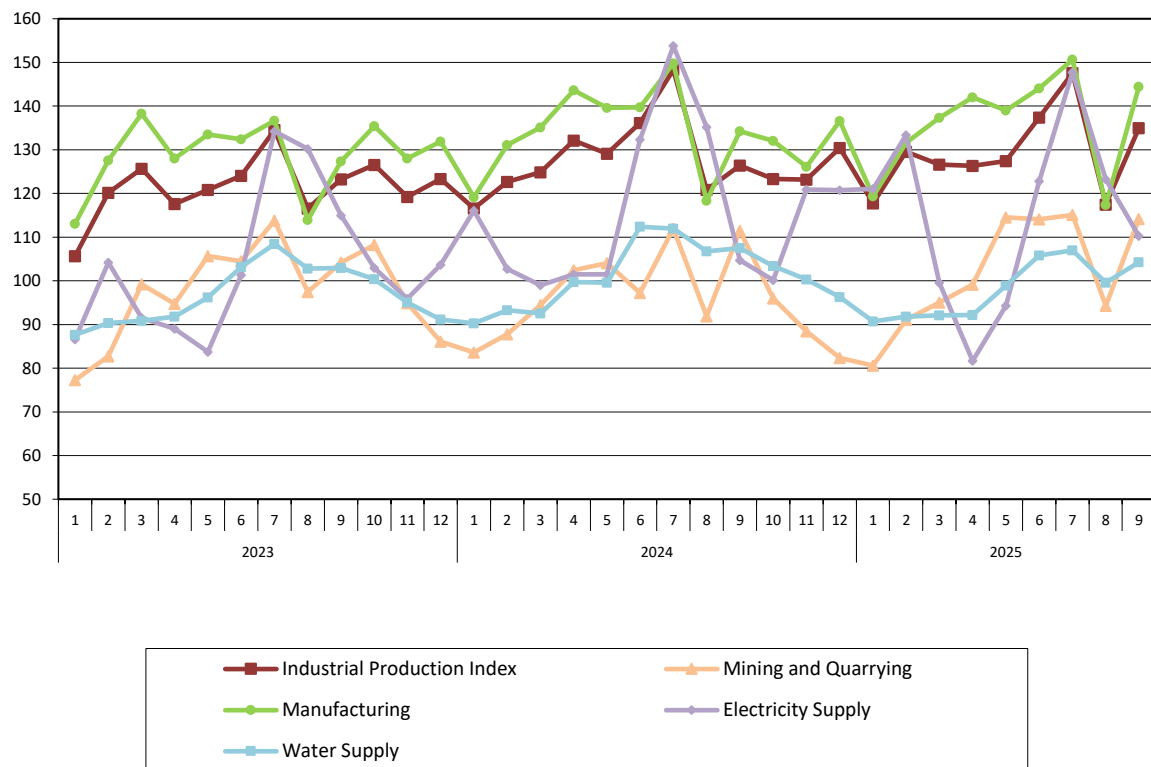


Table 1. Annual rates of change of the Industrial Production Index
(Working day adjusted data, according to the real number of working days)
Base year: 2015=100.0

Code		Division	September			Rate of change (%)	
			2025*	2024*	2023	2025/2024	2024/2023
OVERALL INDEX			134.97	126.42	123.27	6.8	2.6
B	MINING AND QUARRYING		114.19	111.41	104.16	2.5	7.0
05-06-09	Mining of coal and lignite – Extraction of crude petroleum and natural gas – Mining support service activities		17.93	14.49	23.89	23.8	-39.4
07	Mining of metal ores		124.35	146.86	139.99	-15.3	4.9
08	Other mining and quarrying		124.84	113.46	103.63	10.0	9.5
C	MANUFACTURING		144.43	134.23	127.36	7.6	5.4
10	Food		134.73	129.22	117.95	4.3	9.6
11	Beverages		119.97	126.16	111.27	-4.9	13.4
12	Tobacco products		168.17	167.93	153.25	0.1	9.6
13	Textiles		120.49	116.50	105.75	3.4	10.2
14	Wearing apparel		63.77	71.55	77.09	-10.9	-7.2
15	Leather and related products		82.65	116.79	93.64	-29.2	24.7
16	Wood and products of wood and cork, except furniture		98.43	99.41	97.46	-1.0	2.0
17	Paper and paper products		115.45	124.19	111.78	-7.0	11.1
18	Printing and reproduction of recorded products		188.24	160.37	129.64	17.4	23.7
19	Coke and refined petroleum products		121.57	104.29	110.56	16.6	-5.7
20	Chemicals and chemical products		147.11	146.25	136.54	0.6	7.1
21	Basic pharmaceutical products and pharmaceutical preparations		290.71	217.48	245.75	33.7	-11.5
22	Rubber and plastic products		133.52	133.21	120.91	0.2	10.2
23	Other non-metallic mineral products		144.89	142.87	126.61	1.4	12.8
24	Basic metals		148.49	140.22	119.89	5.9	17.0
25	Fabricated metal products, except machinery and equipment		144.44	147.29	140.70	-1.9	4.7
26	Computers, electronic and optical products		344.60	261.00	235.39	32.0	10.9
27	Electrical equipment		147.41	153.26	143.89	-3.8	6.5
28	Machinery and equipment n. e. c.		139.18	115.41	102.83	20.6	12.2
29	Motor vehicles, trailers and semi-trailers		196.36	153.99	157.84	27.5	-2.4
30	Other transport equipment		76.15	58.35	66.01	30.5	-11.6
31	Furniture		136.07	140.33	132.66	-3.0	5.8
32	Other manufacturing		130.40	171.23	156.88	-23.8	9.1
33	Repair and installation of machinery and equipment		139.70	115.48	105.97	21.0	9.0
D	ELECTRICITY SUPPLY		110.29	104.71	114.94	5.3	-8.9
35	Electricity supply		110.29	104.71	114.94	5.3	-8.9
E	WATER SUPPLY		104.28	107.51	102.94	-3.0	4.4
36	Water collection, treatment and supply		104.28	107.51	102.94	-3.0	4.4
MAIN INDUSTRIAL GROUPINGS							
1	Energy		112.98	104.54	112.10	8.1	-6.7
2	Intermediate goods		133.35	132.79	119.00	0.4	11.6
3	Capital goods		156.78	141.73	135.92	10.6	4.3
4	Consumer Durables		188.26	159.00	161.52	18.4	-1.6
5	Consumer Non-Durables		154.34	142.22	134.80	8.5	5.5

* Provisional data

Note: The indices are rounded up to two decimal digits when published and percentage changes up to one decimal digit when published.

Table 2. Average indices of the period January – September and rates of change of the Industrial Production Index
(Working day adjusted data, according to the real number of working days)

Base year: 2015=100.0

Code		Division	Average indices of the period Jan.-September			Rate of change (%)	
			2025*	2024*	2023	2025/2024	2024/2023
OVERALL INDEX			129.45	128.54	120.98	0.7	6.2
B	MINING AND QUARRYING		102.00	98.31	97.73	3.8	0.6
05-06-09	Mining of coal and lignite – Extraction of crude petroleum and natural gas – Mining support service activities		20.18	16.34	24.43	23.5	-33.1
07	Mining of metal ores		114.27	123.81	125.46	-7.7	-1.3
08	Other mining and quarrying		109.81	101.58	98.96	8.1	2.7
C	MANUFACTURING		136.21	134.50	127.94	1.3	5.1
10	Food		129.86	126.21	118.26	2.9	6.7
11	Beverages		118.13	119.22	110.52	-0.9	7.9
12	Tobacco products		177.58	159.98	141.70	11.0	12.9
13	Textiles		111.90	105.59	109.37	6.0	-3.5
14	Wearing apparel		57.54	64.51	72.90	-10.8	-11.5
15	Leather and related products		72.63	94.05	96.99	-22.8	-3.0
16	Wood and products of wood and cork, except furniture		106.34	101.01	107.78	5.3	-6.3
17	Paper and paper products		114.50	114.08	113.08	0.4	0.9
18	Printing and reproduction of recorded products		143.13	137.21	125.62	4.3	9.2
19	Coke and refined petroleum products		105.67	115.98	109.77	-8.9	5.7
20	Chemicals and chemical products		140.91	137.85	126.83	2.2	8.7
21	Basic pharmaceutical products and pharmaceutical preparations		270.17	275.37	273.31	-1.9	0.8
22	Rubber and plastic products		132.74	128.33	124.62	3.4	3.0
23	Other non-metallic mineral products		140.11	141.69	126.48	-1.1	12.0
24	Basic metals		153.06	133.54	128.45	14.6	4.0
25	Fabricated metal products, except machinery and equipment		144.02	140.61	134.13	2.4	4.8
26	Computers, electronic and optical products		250.61	241.30	228.54	3.9	5.6
27	Electrical equipment		144.75	144.60	135.03	0.1	7.1
28	Machinery and equipment n. e. c.		135.61	122.90	122.12	10.3	0.6
29	Motor vehicles, trailers and semi-trailers		140.02	136.77	158.78	2.4	-13.9
30	Other transport equipment		68.57	68.04	68.71	0.8	-1.0
31	Furniture		135.89	144.74	148.74	-6.1	-2.7
32	Other manufacturing		130.32	135.01	134.74	-3.5	0.2
33	Repair and installation of machinery and equipment		123.82	101.30	92.24	22.2	9.8
D	ELECTRICITY SUPPLY		114.89	116.31	103.98	-1.2	11.9
35	Electricity supply		114.89	116.31	103.98	-1.2	11.9
E	WATER SUPPLY		98.03	101.47	97.14	-3.4	4.5
36	Water collection, treatment and supply		98.03	101.47	97.14	-3.4	4.5
MAIN INDUSTRIAL GROUPINGS							
1	Energy		110.05	114.46	104.96	-3.9	9.1
2	Intermediate goods		130.35	126.54	119.69	3.0	5.7
3	Capital goods		147.01	133.82	132.02	9.9	1.4
4	Consumer Durables		150.00	151.85	139.94	-1.2	8.5
5	Consumer Non-Durables		146.50	144.53	137.47	1.4	5.1

* Provisional data

Note: The indices are rounded up to two decimal digits when published and percentage changes up to one decimal digit when published.

Table 3. Monthly rate of change of the Industrial Production Index*(Working day adjusted data, according to the real number of working days)***Base year: 2015=100.0**

Code	Division	September 2025*	August 2025*	Rate of change (%) Sep. 2025/Aug. 2025
OVERALL INDEX		134.97	117.44	14.9
B	MINING AND QUARRYING	114.19	94.29	21.1
05-06-09	Mining of coal and lignite – Extraction of crude petroleum and natural gas – Mining support service activities	17.93	10.82	65.7
07	Mining of metal ores	124.35	100.67	23.5
08	Other mining and quarrying	124.84	104.37	19.6
C	MANUFACTURING	144.43	117.41	23.0
10	Food	134.73	153.15	-12.0
11	Beverages	119.97	121.36	-1.1
12	Tobacco products	168.17	104.50	60.9
13	Textiles	120.49	61.20	96.9
14	Wearing apparel	63.77	51.81	23.1
15	Leather and related products	82.65	34.97	136.4
16	Wood and products of wood and cork, except furniture	98.43	64.55	52.5
17	Paper and paper products	115.45	93.69	23.2
18	Printing and reproduction of recorded products	188.24	101.16	86.1
19	Coke and refined petroleum products	121.57	115.42	5.3
20	Chemicals and chemical products	147.11	100.62	46.2
21	Basic pharmaceutical products and pharmaceutical preparations	290.71	139.44	108.5
22	Rubber and plastic products	133.52	95.40	40.0
23	Other non-metallic mineral products	144.89	103.45	40.1
24	Basic metals	148.49	121.47	22.2
25	Fabricated metal products, except machinery and equipment	144.44	113.15	27.7
26	Computers, electronic and optical products	344.60	140.76	144.8
27	Electrical equipment	147.41	103.05	43.0
28	Machinery and equipment n. e. c.	139.18	83.62	66.5
29	Motor vehicles, trailers and semi-trailers	196.36	121.49	61.6
30	Other transport equipment	76.15	55.33	37.6
31	Furniture	136.07	71.62	90.0
32	Other manufacturing	130.40	89.92	45.0
33	Repair and installation of machinery and equipment	139.70	93.51	49.4
D	ELECTRICITY SUPPLY	110.29	123.24	-10.5
35	Electricity supply	110.29	123.24	-10.5
E	WATER SUPPLY	104.28	99.55	4.7
36	Water collection, treatment and supply	104.28	99.55	4.7
MAIN INDUSTRIAL GROUPINGS				
1	Energy	112.98	118.10	-4.3
2	Intermediate goods	133.35	101.86	30.9
3	Capital goods	156.78	104.81	49.6
4	Consumer Durables	188.26	81.80	130.2
5	Consumer Non-Durables	154.34	133.85	15.3

* Provisional data

Note: The indices are rounded up to two decimal digits when published and percentage changes up to one decimal digit when published.

Table 4. Monthly rate of change of the seasonally adjusted Industrial Production Index

Base year: 2015=100.0

Code	Division	September 2025	August 2025	Rate of change (%) Sep. 2025/Aug. 2025
	OVERALL INDEX	131.63	125.80	4.6
B	MINING AND QUARRYING	99.63	97.94	1.7
05-06-09	Mining of coal and lignite – Extraction of crude petroleum and natural gas – Mining support service activities	-	-	-
07	Mining of metal ores	113.05	110.07	2.7
08	Other mining and quarrying	106.63	105.84	0.7
C	MANUFACTURING	141.00	132.46	6.4
10	Food	127.90	125.68	1.8
11	Beverages	106.63	104.45	2.1
12	Tobacco products	160.32	159.32	0.6
13	Textiles	113.69	110.69	2.7
14	Wearing apparel	56.95	61.50	-7.4
15	Leather and related products	67.06	68.01	-1.4
16	Wood and products of wood and cork, except furniture	99.86	98.40	1.5
17	Paper and paper products	110.43	115.20	-4.1
18	Printing and reproduction of recorded products	181.05	141.32	28.1
19	Coke and refined petroleum products	119.71	111.98	6.9
20	Chemicals and chemical products	135.10	138.16	-2.2
21	Basic pharmaceutical products and pharmaceutical preparations	318.31	256.25	24.2
22	Rubber and plastic products	131.78	128.31	2.7
23	Other non-metallic mineral products	141.14	125.04	12.9
24	Basic metals	147.99	148.22	-0.2
25	Fabricated metal products, except machinery and equipment	139.98	153.39	-8.7
26	Computers, electronic and optical products	322.57	214.76	50.2
27	Electrical equipment	148.07	147.84	0.2
28	Machinery and equipment n. e. c.	153.77	134.59	14.3
29	Motor vehicles, trailers and semi-trailers	208.75	186.96	11.7
30	Other transport equipment	79.01	74.37	6.3
31	Furniture	138.45	131.70	5.1
32	Other manufacturing	122.57	120.96	1.3
33	Repair and installation of machinery and equipment	143.06	149.54	-4.3
D	ELECTRICITY SUPPLY	109.93	106.07	3.6
35	Electricity supply	109.93	106.07	3.6
E	WATER SUPPLY	96.79	94.65	2.3
36	Water collection, treatment and supply	96.79	94.65	2.3
	MAIN INDUSTRIAL GROUPINGS			
1	Energy	111.61	105.54	5.7
2	Intermediate goods	128.35	126.09	1.8
3	Capital goods	159.76	159.21	0.3
4	Consumer Durables	166.50	144.82	15.0
5	Consumer Non-Durables	149.18	140.30	6.3

Notes:

1. The indices are rounded up to two decimal digits when published and percentage changes up to one decimal digit when published.
2. The whole time-series with seasonally adjusted indices is recalculated every time a new observation is added in the time-series.
3. The composed index of divisions 05-06-09 is not seasonally adjusted.

Table 5. Evolution of the Overall Industrial Production Index
(Working day adjusted data, according to the real number of working days)

Base year: 2015=100.0

Year and month	Overall Index	Monthly rate of change (%)	Annual rate of change (%)	12-month average index (moving average)	Rate of change of the 12-month average index (%)
2023:					
1	105.63	-10.5	0.7	118.83	2.5
2	120.18	13.8	5.3	119.33	2.5
3	125.66	4.6	0.7	119.41	1.8
4	117.60	-6.4	4.4	119.82	2.5
5	120.86	2.8	2.3	120.05	2.4
6	124.05	2.6	-3.0	119.73	1.3
7	134.56	8.5	-1.7	119.54	0.5
8	116.61	-13.3	-0.2	119.53	0.1
9	123.27	5.7	1.8	119.71	0.4
10	126.57	2.7	10.3	120.70	1.4
11	119.19	-5.8	3.3	121.01	1.8
12	123.30	3.4	4.5	121.46	2.3
Annual average	121.46				
2024*:					
1	116.56	-5.5	10.3	122.37	3.0
2	122.64	5.2	2.1	122.57	2.7
3	124.87	1.8	-0.6	122.51	2.6
4	132.08	5.8	12.3	123.71	3.2
5	129.14	-2.2	6.8	124.40	3.6
6	136.13	5.4	9.7	125.41	4.7
7	148.32	9.0	10.2	126.56	5.9
8	120.85	-18.5	3.6	126.91	6.2
9	126.42	4.6	2.6	127.17	6.2
10	123.34	-2.4	-2.6	126.90	5.1
11	123.15	-0.2	3.3	127.23	5.1
12	130.42	5.9	5.8	127.83	5.2
Annual average	127.83				
2025*:					
1	117.74	-9.7	1.0	127.92	4.5
2	129.55	10.0	5.6	128.50	4.8
3	126.61	-2.3	1.4	128.64	5.0
4	126.33	-0.2	-4.4	128.17	3.6
5	127.45	0.9	-1.3	128.03	2.9
6	137.39	7.8	0.9	128.13	2.2
7	147.55	7.4	-0.5	128.07	1.2
8	117.44	-20.4	-2.8	127.78	0.7
9	134.97	14.9	6.8	128.50	1.0

* Provisional data

Note: The indices are rounded up to two decimal digits when published and percentage changes up to one decimal digit when published.

Table 6. Monthly evolution of the seasonally adjusted Overall Industrial Production Index and Main Industrial Groupings

Base year: 2015=100.0

Year and month		Overall Index		Energy		Intermediate goods		Capital goods		Consumer durables		Consumer non-durables	
		Index	Monthly rate of change (%)	Index	Monthly rate of change (%)	Index	Monthly rate of change (%)	Index	Monthly rate of change (%)	Index	Monthly rate of change (%)	Index	Monthly rate of change (%)
2023:	1	116.25	-1.8	91.48	-9.6	120.55	0.4	142.46	6.2	140.47	-8.5	134.69	2.1
	2	122.29	5.2	107.36	17.4	118.45	-1.7	143.82	1.0	141.00	0.4	136.68	1.5
	3	124.27	1.6	106.96	-0.4	124.13	4.8	142.47	-0.9	138.98	-1.4	139.74	2.2
	4	119.62	-3.7	110.16	3.0	118.20	-4.8	129.78	-8.9	141.69	1.9	128.35	-8.1
	5	120.13	0.4	100.31	-8.9	119.60	1.2	147.42	13.6	143.11	1.0	136.11	6.0
	6	117.99	-1.8	95.26	-5.0	119.56	0.0	142.93	-3.0	142.61	-0.4	136.41	0.2
	7	119.78	1.5	107.31	12.7	115.10	-3.7	132.02	-7.6	146.67	2.8	133.89	-1.9
	8	123.38	3.0	110.13	2.6	119.89	4.2	145.74	10.4	145.52	-0.8	135.09	0.9
	9	120.41	-2.4	110.52	0.3	114.39	-4.6	138.34	-5.1	150.25	3.3	130.80	-3.2
	10	128.36	6.6	112.85	2.1	123.91	8.3	146.03	5.6	162.13	7.9	144.17	10.2
	11	122.77	-4.4	104.28	-7.6	122.32	-1.3	149.10	2.1	167.33	3.2	136.27	-5.5
	12	123.04	0.2	102.79	-1.4	126.62	3.5	151.60	1.7	159.73	-4.5	135.34	-0.7
Annual average		121.52		104.95		120.23		142.64		148.29		135.63	
2024:	1	127.29	3.5	109.22	6.3	126.10	-0.4	140.88	-7.1	182.10	14.0	143.68	6.2
	2	124.62	-2.1	105.23	-3.7	130.34	3.4	141.76	0.6	150.98	-17.1	137.75	-4.1
	3	123.91	-0.6	109.05	3.6	123.20	-5.5	141.97	0.2	157.65	4.4	135.96	-1.3
	4	133.86	8.0	124.65	14.3	128.61	4.4	145.06	2.2	167.57	6.3	144.41	6.2
	5	128.96	-3.7	117.79	-5.5	121.77	-5.3	140.25	-3.3	160.13	-4.4	143.47	-0.7
	6	129.74	0.6	123.77	5.1	121.61	-0.1	141.68	1.0	136.07	-15.0	139.81	-2.6
	7	131.69	1.5	118.80	-4.0	126.44	4.0	146.25	3.2	161.77	18.9	145.97	4.4
	8	127.79	-3.0	113.82	-4.2	125.23	-1.0	134.25	-8.2	129.88	-19.7	144.83	-0.8
	9	123.51	-3.3	103.26	-9.3	127.77	2.0	144.75	7.8	144.23	11.0	138.02	-4.7
	10	125.11	1.3	106.80	3.4	127.87	0.1	144.82	0.0	130.30	-9.7	139.62	1.2
	11	127.21	1.7	115.48	8.1	125.57	-1.8	142.98	-1.3	137.10	5.2	137.98	-1.2
	12	130.23	2.4	110.98	-3.9	130.51	3.9	148.78	4.1	204.67	49.3	144.61	4.8
Annual average		127.83		113.24		126.25		142.79		155.20		141.34	
2025:	1	128.32	-1.5	111.32	0.3	128.16	-1.8	152.75	2.7	128.04	-37.4	142.56	-1.4
	2	131.37	2.4	118.65	6.6	127.00	-0.9	150.82	-1.3	160.83	25.6	143.50	0.7
	3	125.63	-4.4	105.91	-10.7	128.52	1.2	153.36	1.7	160.50	-0.2	138.14	-3.7
	4	126.34	0.6	98.94	-6.6	128.95	0.3	161.49	5.3	140.57	-12.4	147.43	6.7
	5	126.68	0.3	103.85	5.0	131.30	1.8	152.04	-5.9	136.94	-2.6	143.47	-2.7
	6	130.52	3.0	112.13	8.0	130.47	-0.6	154.85	1.8	169.01	23.4	144.40	0.6
	7	131.12	0.5	114.05	1.7	134.38	3.0	158.19	2.2	139.33	-17.6	141.67	-1.9
	8	125.80	-4.1	105.54	-7.5	126.09	-6.2	159.21	0.6	144.82	3.9	140.30	-1.0
	9	131.63	4.6	111.61	5.7	128.35	1.8	159.76	0.3	166.50	15.0	149.18	6.3

Notes:

1. The indices are rounded up to two decimal digits when published and percentage changes up to one decimal digit when published.
2. The whole time-series with seasonally adjusted indices is recalculated every time a new observation is added in the time-series.

METHODOLOGICAL NOTES

Generally	The Industrial Production Index (IPI) in Greece has been compiled by the Hellenic Statistical Authority (ELSTAT) from 1959 onwards.
Purpose of the index	The objective of the index is to compare the magnitude (volume) of the output in the current month in the mining and quarrying, manufacturing, electricity and water supply divisions with the corresponding output of a given fixed period, which is considered as base period. The Industrial Production Index shows the evolution of the value added of the production factors cost, at constant prices.
Legal framework	The compilation of the IPI is based on the framework of the implementation of Council Regulation (EC) No 1165/1998 concerning short-term statistics (STS-R). Furthermore, the IPI is governed by Regulation (EC) No 1893/2006 of the European Parliament and of the Council, by Commission Regulation (EC) No 656/2007, by Council Regulation (EC) No 451/2008, by Regulation (EU) No 2019/2152 of the European Parliament and of the Council on European business statistics, as well as Commission Implementing Regulation (EU) No 2020/1197 laying down technical specifications and arrangements pursuant to Regulation (EU) No 2019/2152.
Reference period	Month.
Base year	2015=100.0.
Revision	The IPI is a fixed base index. The Industrial Production Index was currently revised with new base year 2015 (2015=100.0) according to the provisions of Council Regulation No 1165/1998 concerning short-term statistics. Short-term indices are revised every five (5) years, particularly in calendar years ending in 0 or 5.
Statistical classifications	At the level of branches of economic activities, the statistical classification of economic activities NACE Rev.2 of EU was used (Regulation No 1893/2006), while at the level of main industrial groupings, the allocation of two-digit and three-digit NACE Rev. 2 headings to categories of aggregate classification was used, in accordance with Council Regulation No 656/2007. At product level, the statistical classification CPA 2008 of EU was used, according to Council Regulation No 451/2008.
Geographical coverage	The index covers the whole Country.
Coverage of economic activities	The index covers all the sections of industry, the main industrial groups, as well as all levels of economic activity.
Statistical survey	The data are collected from a sample of 1,263 enterprises. The survey covers 325 products and the measurement of the surveyed products is made in terms of output quantities or in terms of production value or turnover, according to the specific features in each branch of economic activity.
Seasonal adjustment	Seasonal adjustment is the procedure followed to remove the impact of seasonality on the time-series (i.e. the impact of monthly effects, e.g. holidays, tourist period etc.), in order to improve comparability over time. The method applied is TRAMO-SEATS with the use of JDemetra+ 2.0.0. For the seasonal adjustment of the Industrial Production Index at 2-digit level of NACE Rev.2, at section level (B – Mining and Quarrying, C – Manufacturing, D – Electricity and E – Water Supply) and for the Main Industrial Groupings (MIGs), the direct approach is applied, namely each time-series is seasonally adjusted independently. For the overall Industrial Production Index, the indirect approach is applied, with the seasonally adjusted IPI being computed by aggregating the seasonally adjusted MIGs using appropriate weights.
Publication of data	The revised IPI with the new base year 2015 (2015=100.0) is released since July 2019, with May 2019 as the first reference month. Data with base year 2015=100.0 are available from January 2000 onwards.
References	More information about the methodology concerning the compilation and calculation of the index and the time series are available on the website of the Hellenic Statistical Authority (ELSTAT) (http://www.statistics.gr/en/statistics/-/publication/DKT21/-).