

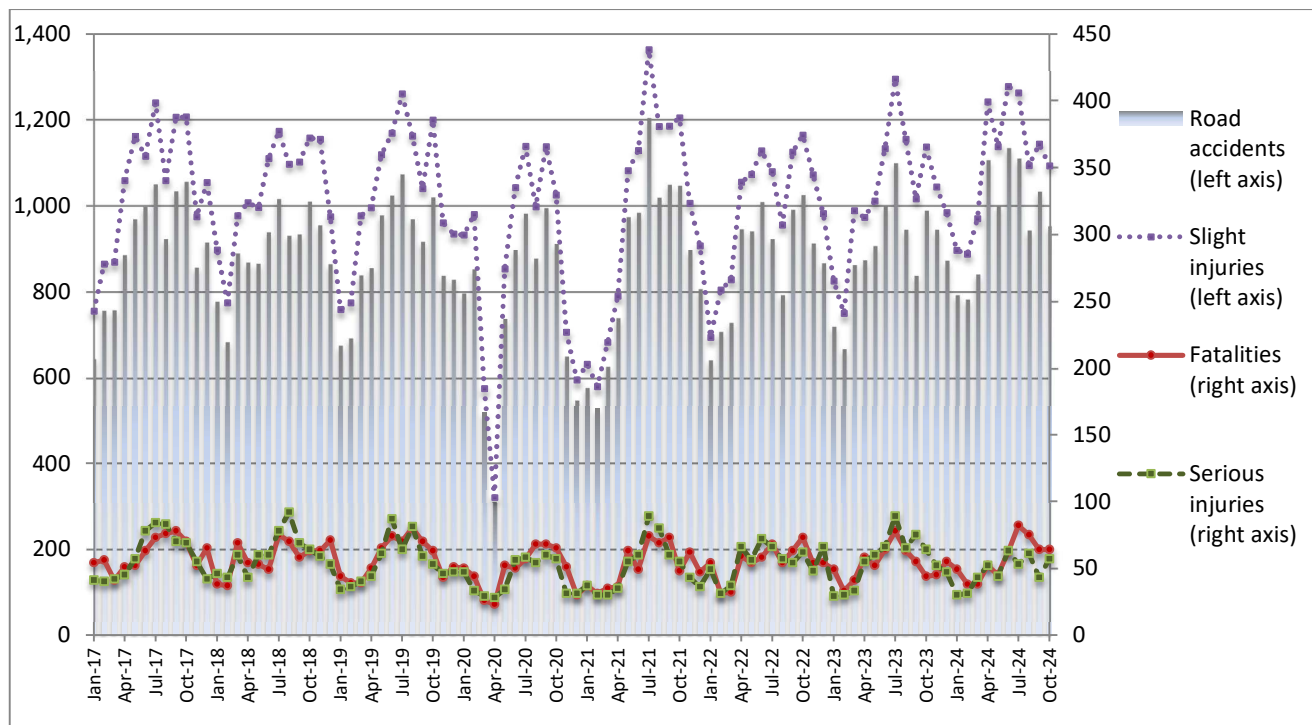


ROAD TRAFFIC ACCIDENTS: October 2024

The Hellenic Statistical Authority (ELSTAT) announces provisional¹ data from the survey on “Road Traffic Accidents” for October 2024. In particular, the road traffic accidents which occurred in Greece, resulting in death or injury, decreased by 3.6% in comparison with the corresponding month of 2023 (953 road accidents in October 2024, against 989 road accidents in October 2023).

The casualties of the injury-causing accidents that occurred in October 2024 were as follows: 64 deaths, 57 serious injuries and 1,093 slight injuries. In contrast, in October 2023 the corresponding figures were: 44 deaths, 64 serious injuries and 1,137 slight injuries. Therefore, road traffic accident casualties in October 2024 increased by 45.5% for deaths and decreased by 10.9% for serious injuries and by 3.9% for slight injuries.

**Graph 1: Road traffic accidents and casualties,
January 2017 - October 2024**



Provisional data for the period November 2023 – October 2024

Information on methodological issues:

Sectoral Statistics Division
Transport Statistics Section
L. Miliara
Tel: +30 213 135 3095
e-mail: l.miliara@statistics.gr

Information for data provision:

Tel: +30 213 135 2022, 2308, 2310
e-mail: data.dissem@statistics.gr

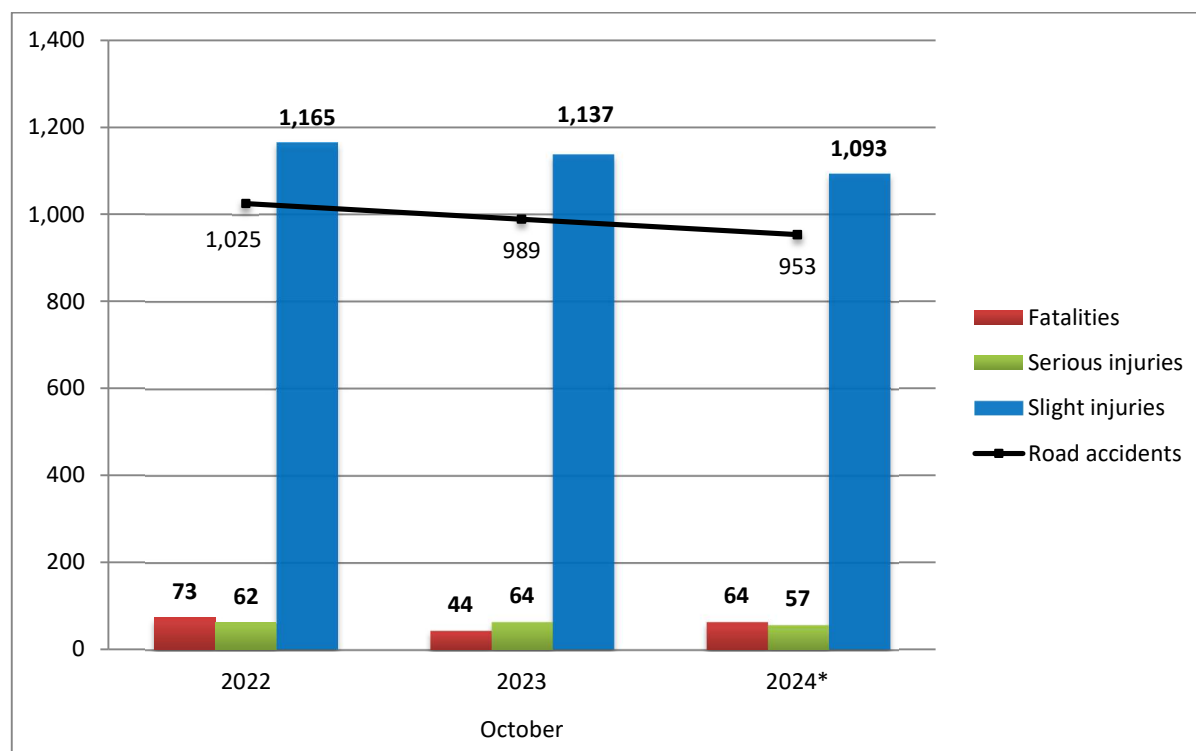
^[1] Data for the reference year is provisional until the finalization of the annual data, which takes place 12 months after the end of the reference year and is published in the corresponding announcement of the following year. During these 12 months the provisional data is updated on the basis of the data of the Road Accident Forms of that year which is transmitted to ELSTAT by Police Authorities (see explanatory notes).

Table 1: Road traffic accidents and casualties, October 2022 - 2024*

	October				
	2022	2023	2023/2022 (%)	2024*	2024*/2023 (%)
Road accidents	1,025	989	-3.5	953	-3.6
Fatalities	73	44	-39.7	64	45.5
Total injuries	1,227	1,201	-2.1	1,150	-4.2
Serious injuries	62	64	3.2	57	-10.9
Slight injuries	1,165	1,137	-2.4	1,093	-3.9

* Provisional data

Graph 2: Road traffic accidents and casualties, October 2022 - 2024*



* Provisional data

Table 2: Road traffic accidents and casualties, by region and department, October 2023 and 2024*

Region and department	Road accidents			Fatalities			Serious injuries			Slight injuries		
	2023	2024*	%	2023	2024*	%	2023	2024*	%	2023	2024*	%
Greece Total	989	953	-3.6	44	64	45.5	64	57	-10.9	1,137	1,093	-3.9
Anatoliki Makedonia and Thraki (East Macedonia and Thrace)	40	25	-37.5	0	4	-	7	6	-14.3	54	25	-53.7
Drama	4	2	-50.0	0	0		0	0		6	3	
Evros	19	10	-47.4	0	1		3	4		21	11	
Kavala	6	4	-33.3	0	2		2	0		14	4	
Xanthi	7	4	-42.9	0	0		1	2		9	3	
Rodopi	4	5	25.0	0	1		1	0		4	4	
Kentriki Makedonia (Central Macedonia)	213	199	-6.6	4	8	100.0	10	7	-30.0	260	238	-8.5
Imathia	5	3	-40.0	2	2		0	0		4	2	
Thessaloniki	185	176	-4.9	1	5		7	4		226	212	
Kilkis	6	4	-33.3	0	1		1	0		6	4	
Pella	2	4	100.0	0	0		0	3		3	4	
Pieria	3	2	-33.3	0	0		1	0		4	4	
Serres	3	2	-33.3	1	0		1	0		4	2	
Chalkidiki	9	8	-11.1	0	0		0	0		13	10	
Dytiki Makedonia (West Macedonia)	6	6	0.0	3	1	-66.7	2	2	0.0	3	7	133.3
Grevena	0	0	-	0	0		0	0		0	0	
Kastoria	1	0	-100.0	0	0		0	0		1	0	
Kozani	4	4	0.0	1	1		2	0		2	6	
Florina	1	2	100.0	2	0		0	2		0	1	
Ipeiros (Epirus)	16	16	0.0	5	5	0.0	1	0	-100.0	14	13	-7.1
Arta	4	3	-25.0	2	0		0	0		3	4	
Thesprotia	2	2	0.0	1	0		1	0		0	2	
Ioannina	7	9	28.6	1	4		0	0		8	6	
Preveza	3	2	-33.3	1	1		0	0		3	1	
Thessalia (Thessaly)	19	18	-5.3	3	3	0.0	4	3	-25.0	20	23	15.0
Karditsa	6	6	0.0	0	0		2	0		5	8	
Larissa	7	6	-14.3	3	2		0	1		6	9	
Magnissia	6	4	-33.3	0	0		2	2		9	4	
Trikala	0	2	-	0	1		0	0		0	2	
Ionian Nisia (Ionian Islands)	8	8	0.0	2	4	100.0	0	0	-	9	6	-33.3
Zakynthos	0	2	-	0	1		0	0		0	1	
Kerkyra	2	5	150.0	1	3		0	0		1	4	
Kefallinia	3	1	-66.7	1	0		0	0		5	1	
Lefkada	3	0	-100.0	0	0		0	0		3	0	

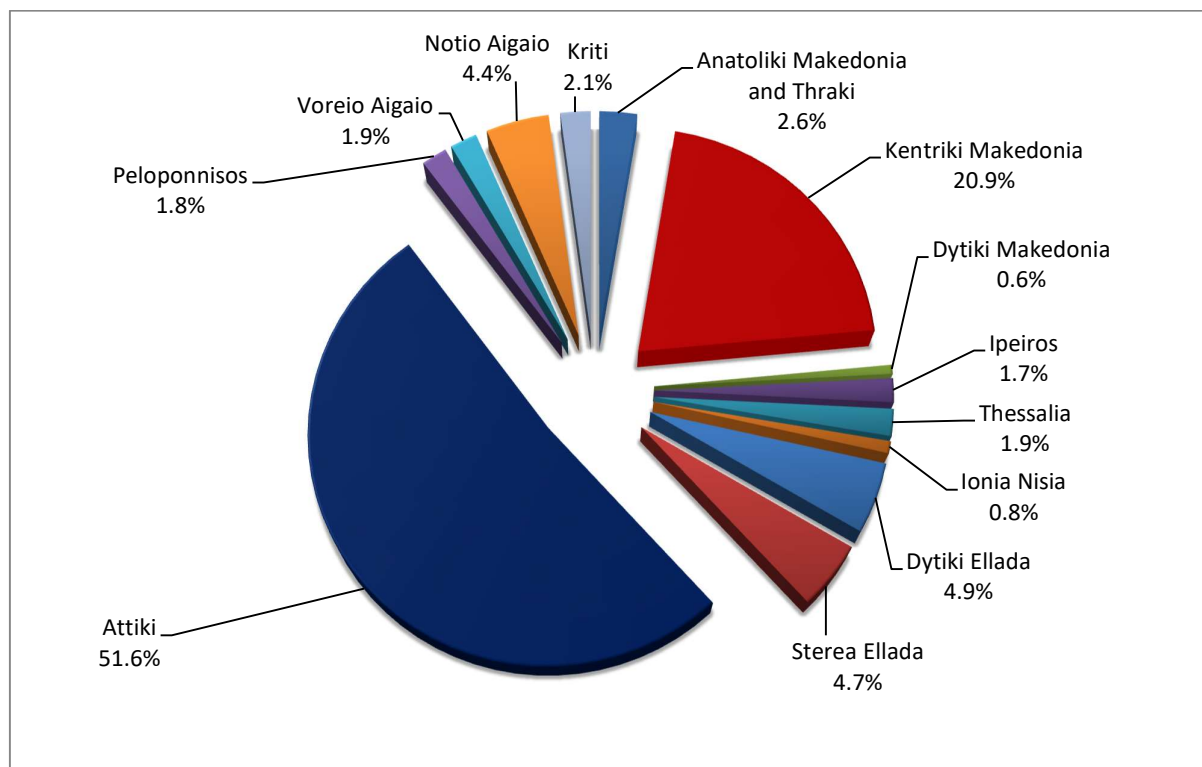
* Provisional data

Table 2: Road traffic accidents and casualties, by region and department, October 2023 and 2024* (Continued)

Region and department	Road accidents			Fatalities			Serious injuries			Slight injuries		
	2023	2024*	%	2023	2024*	%	2023	2024*	%	2023	2024*	%
Dytiki Ellada (West Greece)	38	47	23.7	1	7	600.0	5	1	-80.0	46	62	34.8
Etolia & Akarnania	22	16	-27.3	1	2		4	0		27	20	
Achaia	9	20	122.2	0	1		0	1		11	31	
Ilia	7	11	57.1	0	4		1	0		8	11	
Stereia Ellada	67	45	-32.8	2	6	200.0	10	6	-40.0	74	59	-20.3
Viotia	12	3	-75.0	1	0		1	0		13	6	
Evia	31	24	-22.6	0	2		3	6		38	28	
Evrytania	2	2	0.0	0	0		1	0		2	4	
Fthiotida	20	13	-35.0	1	2		5	0		18	17	
Fokida	2	3	50.0	0	2		0	0		3	4	
Attiki (Attica)	504	492	-2.4	14	16	14.3	19	13	-31.6	576	555	-3.6
Peloponnisos (Peloponnese)	30	17	-43.3	4	3	-25.0	2	2	0.0	31	18	-41.9
Argolida	6	2	-66.7	0	1		0	1		7	3	
Arkadia	3	2	-33.3	2	0		0	1		2	1	
Korinthia	9	7	-22.2	1	0		2	0		7	9	
Lakonia	5	2	-60.0	0	1		0	0		6	2	
Messinia	7	4	-42.9	1	1		0	0		9	3	
Voreio Aigaio (North Aegean)	13	18	38.5	2	1	-50.0	2	1	-50.0	12	18	50.0
Lesvos	11	14	27.3	2	1		1	1		11	13	
Samos	2	3	50.0	0	0		1	0		1	4	
Chios	0	1	-	0	0		0	0		0	1	
Notio Aigaio (South Aegean)	25	42	68.0	1	2	100.0	2	7	250.0	29	49	69.0
Dodekanissos	17	29	70.6	0	1		1	6		21	35	
Kyklades	8	13	62.5	1	1		1	1		8	14	
Kriti (Crete)	10	20	100.0	3	4	33.3	0	9	-	9	20	122.2
Iraklio	6	9	50.0	1	2		0	4		7	14	
Lassithi	2	3	50.0	1	0		0	2		1	2	
Rethymno	0	3	-	0	2		0	1		0	0	
Chania	2	5	150.0	1	0		0	2		1	4	

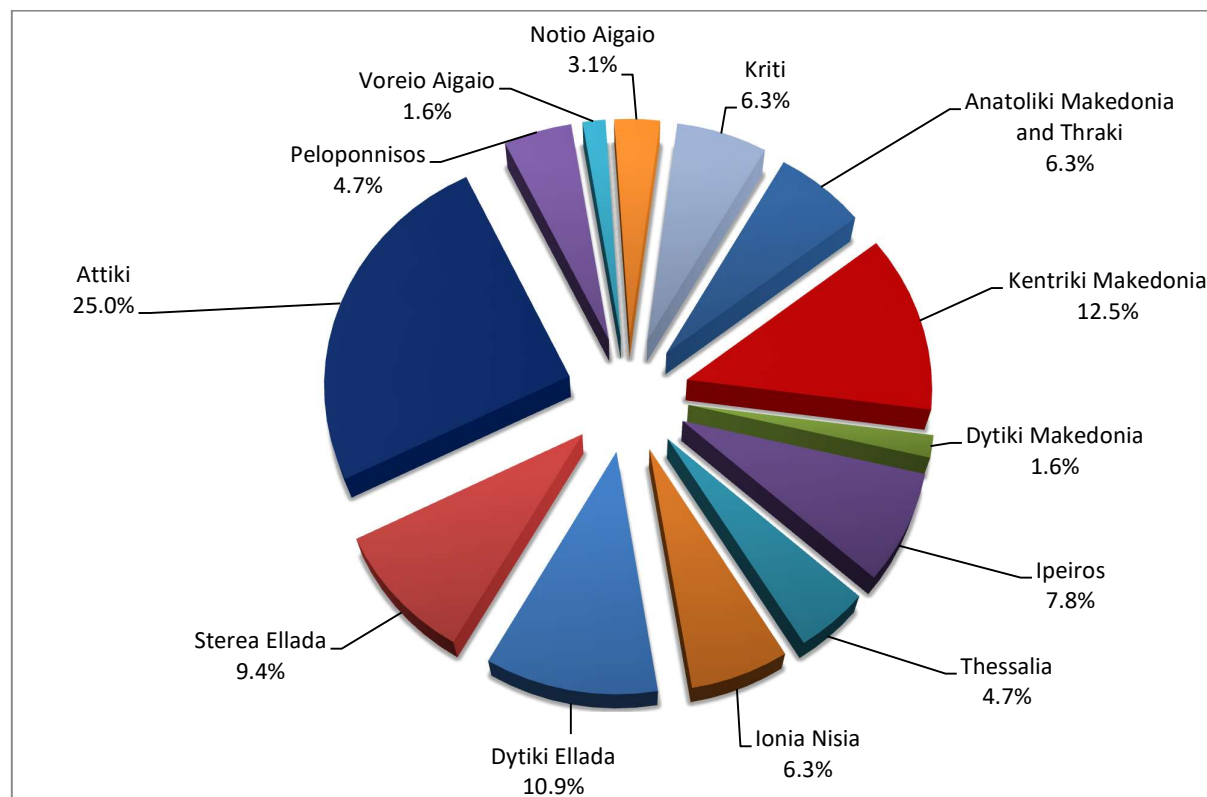
* Provisional data

Graph 3: Road traffic accidents by region, October 2024 *



* Provisional data

Graph 4: Fatalities by region, October 2024 *



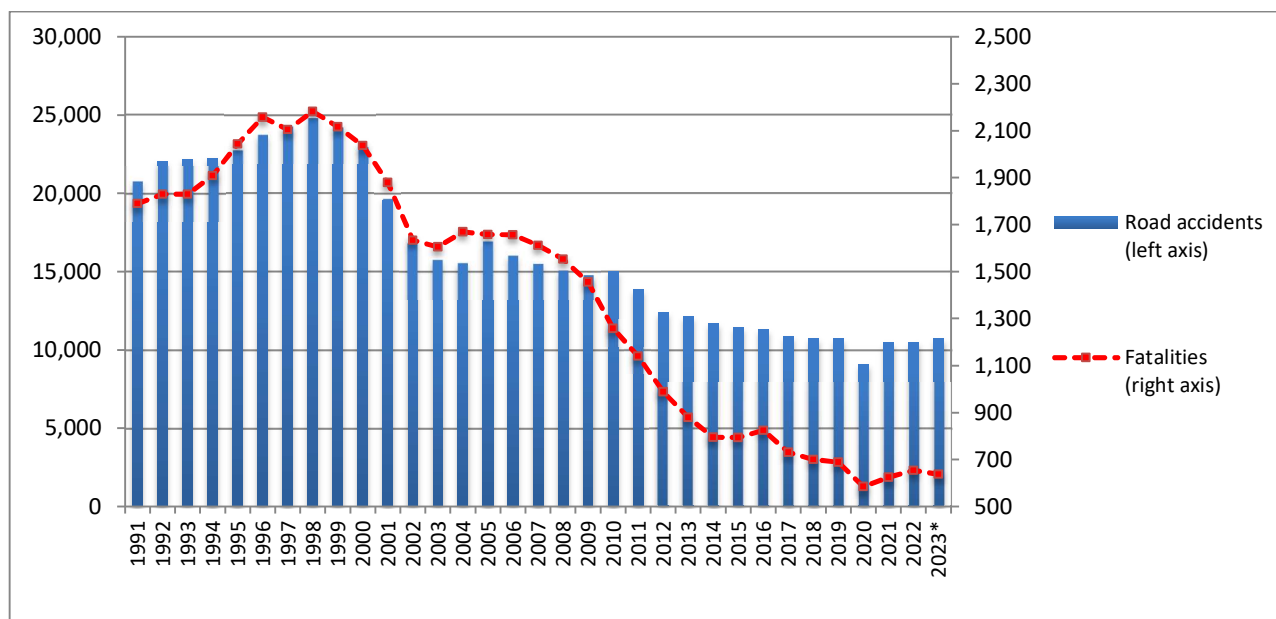
* Provisional data

Table 3: Road traffic accidents and casualties for the period January - October 2022, 2023 and 2024*

	2022		2023		2024 *
	January - October	Total year	January - October	Total year*	January - October
Road Accidents	8,707	10,487	8,902	10,720	9,696
<i>Annual Change (%)</i>			2.2	2.2	8.9
Fatalities	546	654	537	637	569
<i>Annual Change (%)</i>			-1.6	-2.6	6.0
Serious injuries	550	664	566	665	477
<i>Annual Change (%)</i>			2.9	0.2	-15.7
Slight injuries	9,907	11,961	10,283	12,311	11,005
<i>Annual Change (%)</i>			3.8	2.9	7.0

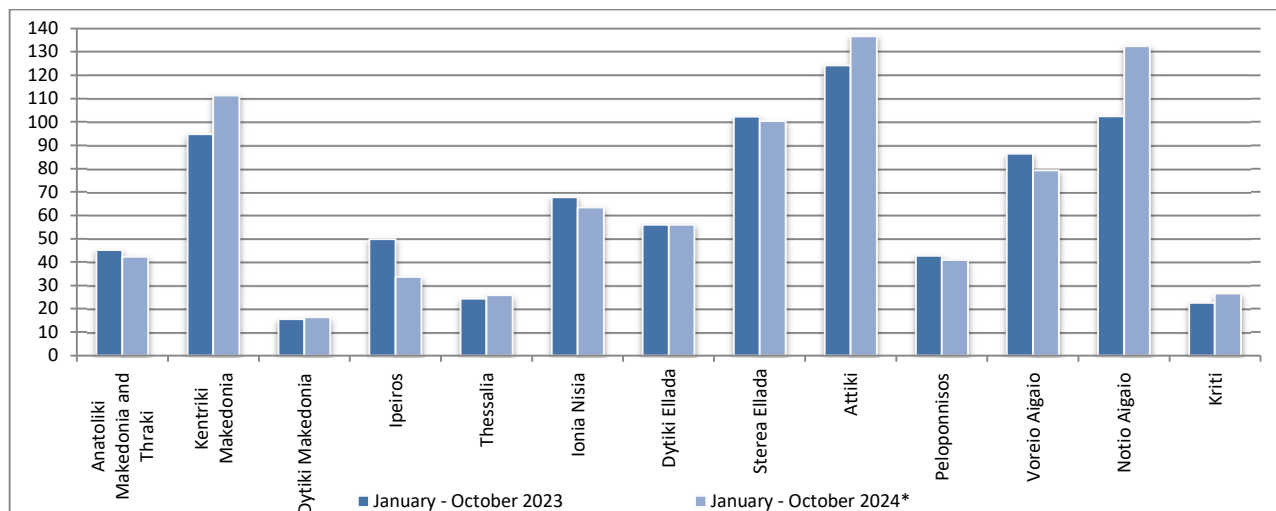
* Provisional data

Graph 5: Total road traffic accidents and fatalities, 1991-2023*



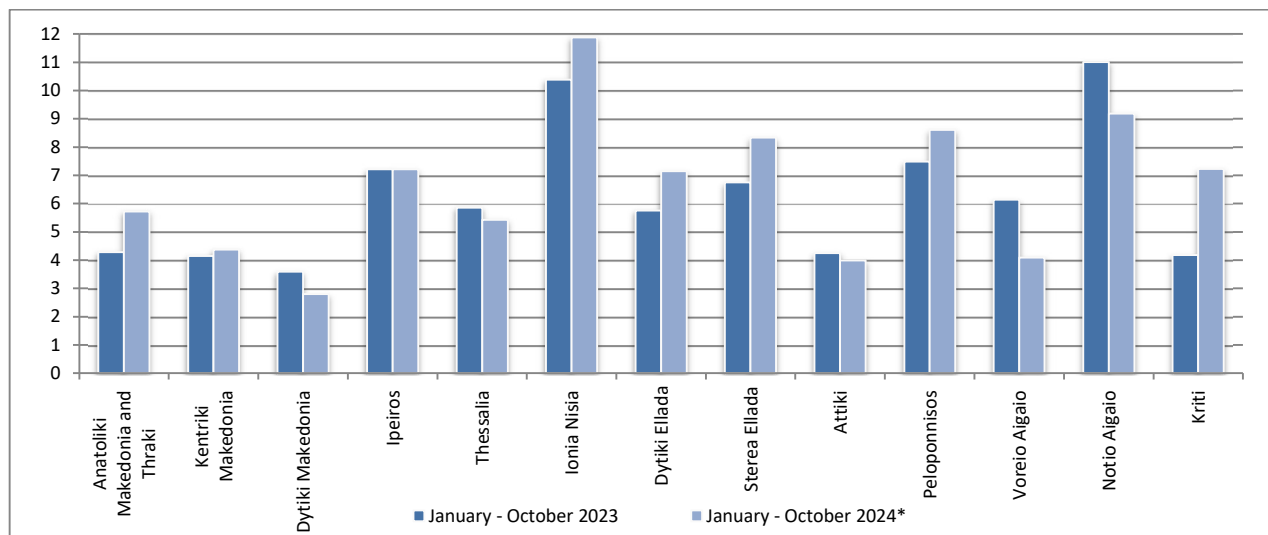
* Provisional data for the period November 2023 – December 2023

Graph 6: Road traffic accidents per 100,000 inhabitants, for the period January - October 2023 and 2024*

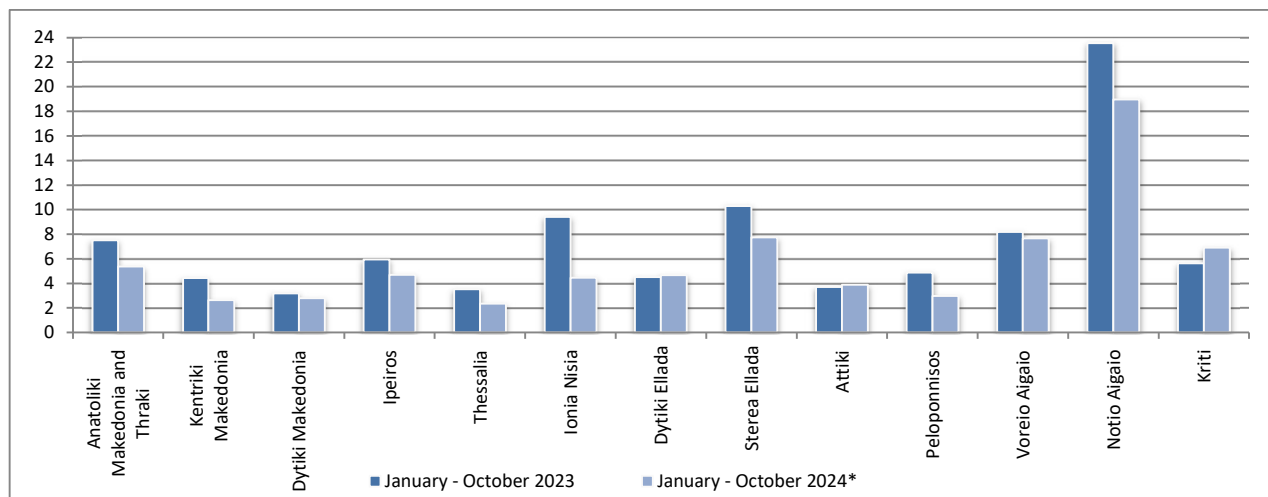


* Provisional data

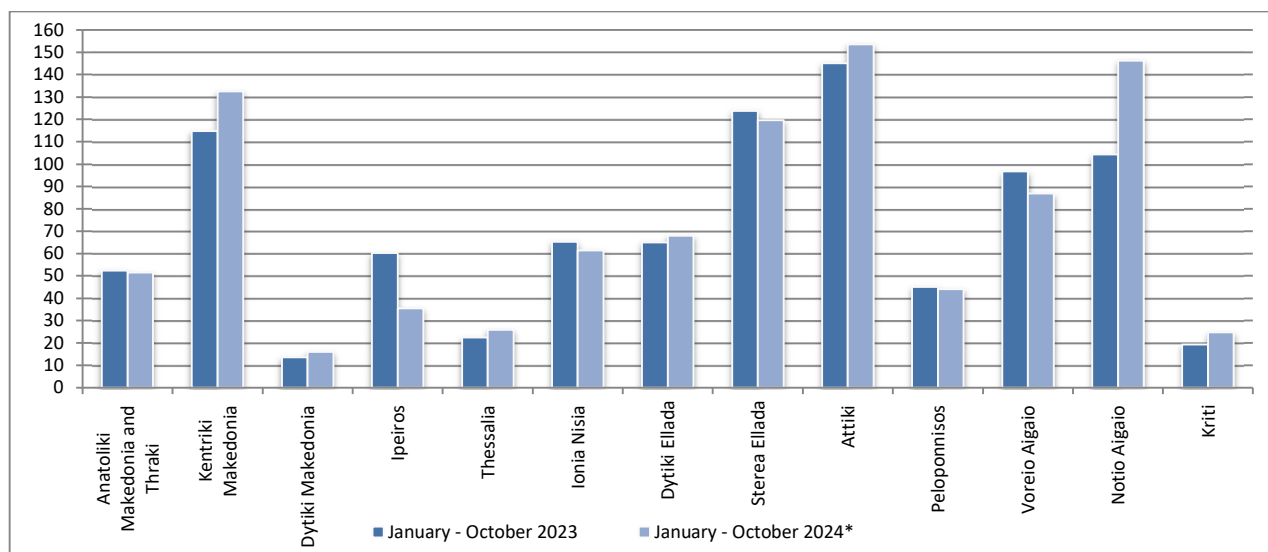
Graph 7: Fatalities per 100,000 inhabitants, for the period January - October 2023 and 2024*



Graph 8: Serious injuries per 100,000 inhabitants, for the period January - October 2023 and 2024*



Graph 9: Slight injuries per 100,000 inhabitants, for the period January - October 2023 and 2024*



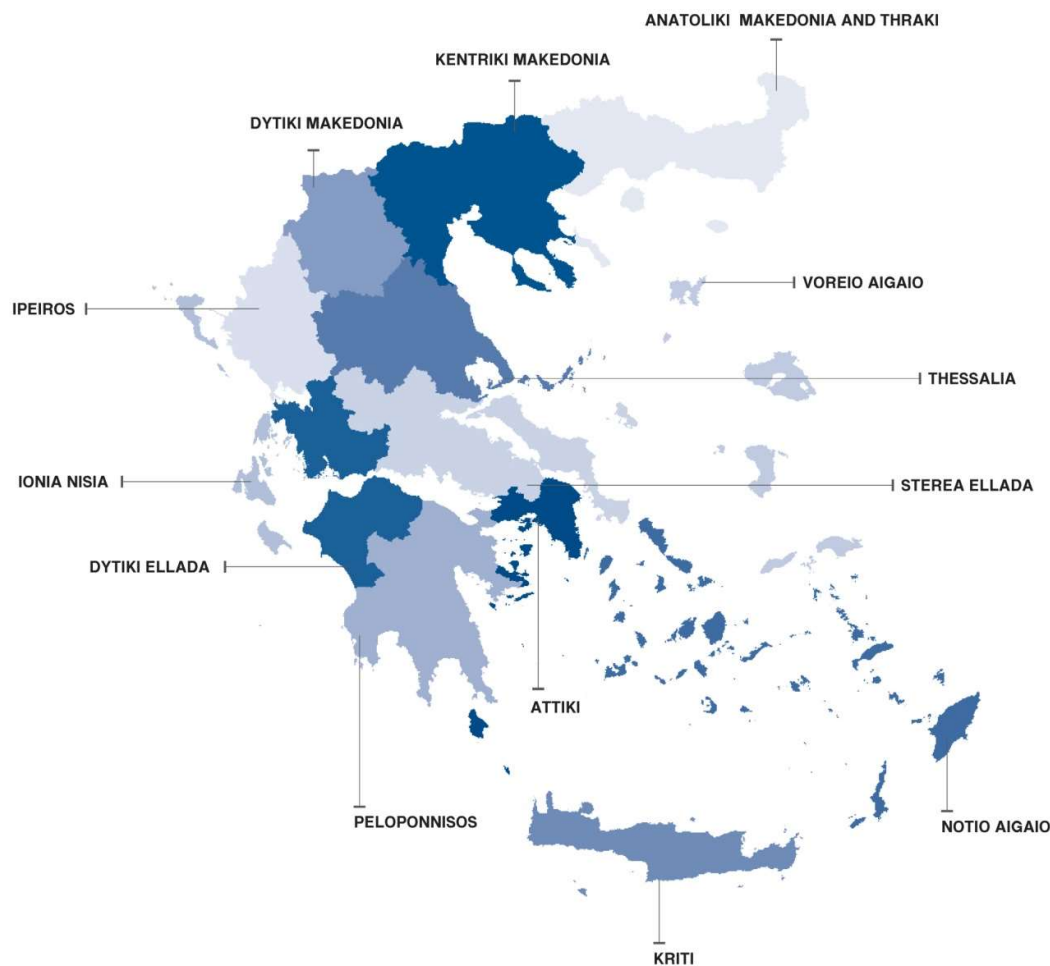
* Provisional data

EXPLANATORY NOTES

Survey on Road Traffic Accidents The Survey on Road Traffic Accidents is conducted on a monthly basis and it records, for each region (see map) and department of Greece and for each month separately, the number of accidents resulting in death or injury, as well as the number of persons injured by categories (drivers, passengers, pedestrians).

On a yearly basis, road traffic accidents are further analyzed. The competent agencies for filling in/collecting the forms on road accidents are the local Police Authorities and the local Port Authorities of Greece.

The lower level of analysis for the place where an injury road accident occurred is the settlement. Data are collected on a monthly basis. The main variables are the following: place of accident, kind of road, casualties, conditions of road surface and type of road.



Legal basis The Survey on Road Traffic Accidents is governed by Council Decision 93/704 of the European Community.

Reference period Monthly.

Availability of data Provisional data are available 2 months after the reference month.
Final data are available 12 months after the reference year.

Definitions **Road accident** (injury accident): Any accident involving at least one road motor vehicle in motion on a public road or square to which the public has access (excluding yards, industrial sites or vehicle depot of public transport enterprises), resulting in at least one injured or killed person. Accidents with only material damages are not included.

Fatality (Death): Any person killed immediately or dying within 30 days as a result of an injury accident (This national definition applies since 01.01.1996)

Person injured: Any person who sustained an injury as result of an injury accident, and who normally needs medical treatment.

Serious injury: Any person who sustained an injury as result of an injury accident, such as brain damages, mutilation, multiple injuries, which may result in lack of awareness or which are life-threatening.

Slight injury: Any person injured who sustained minor and not life-threatening injuries.

Vehicle: Include motor vehicles, trolleybuses, motorcycles, bicycles, motorbikes, agricultural and road making machines, animal and hand-drawn vehicles. Railway vehicles are excluded, unless the road accident involves at least one of the aforementioned types of vehicles and therefore, railway vehicles are considered vehicles.

Methodology The forms of the survey are filled in by the local Police Authorities and the local Port Authorities as well.

References More information about Road Traffic Accidents is available on ELSTAT's website and more specifically at the link: <https://www.statistics.gr/en/statistics/-/publication/SDT03/->.