



PRESS RELEASE

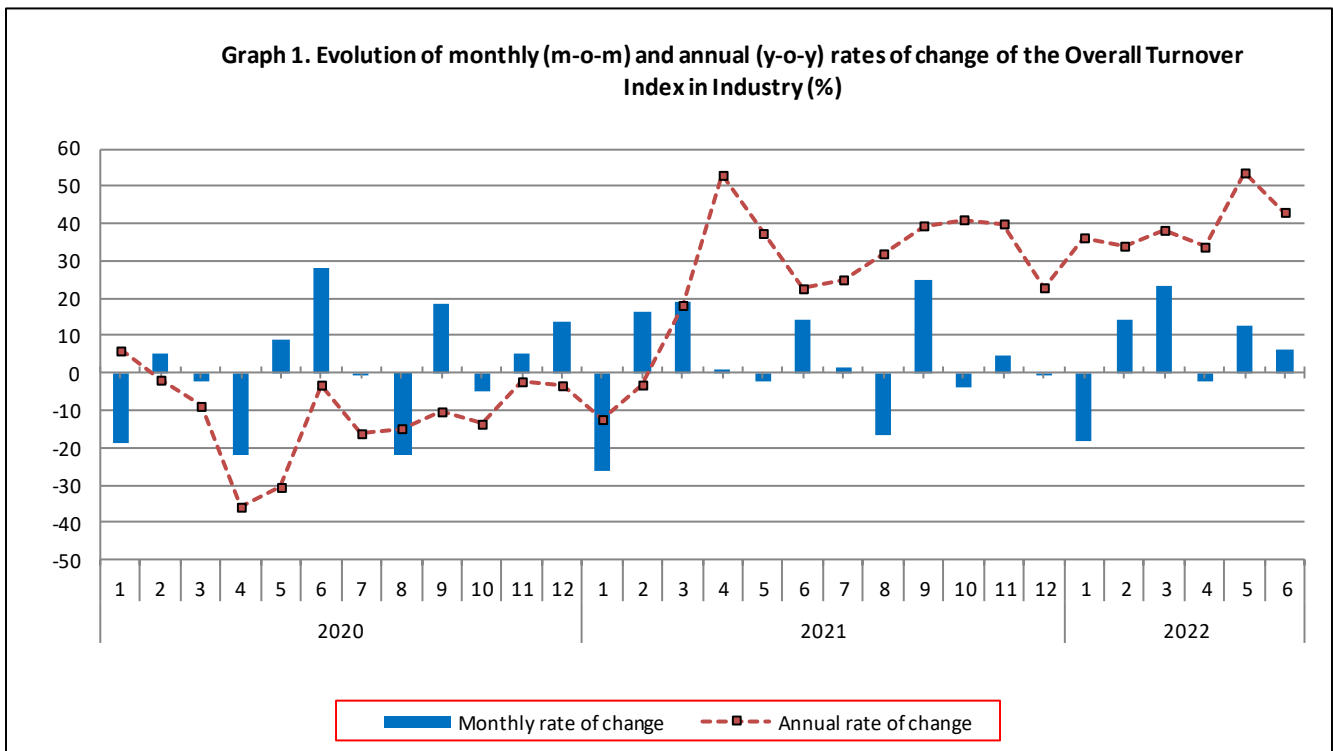
TURNOVER INDEX IN INDUSTRY: June 2022, y-o-y increase of 43.1%

The Hellenic Statistical Authority announces the Turnover Index in Industry with base year 2015=100.0 for June 2022, the evolution of which on the basis of provisional data, is as follows:

The Overall Turnover Index in Industry (both Domestic and Non-Domestic Market) in June 2022 recorded an increase of 43.1% compared with the corresponding index of June 2021. The Overall Turnover Index in Industry in June 2021 increased by 22.7% compared with the corresponding index in June 2020 (Table 1).

The Overall Turnover Index in Industry in June 2022, compared with May 2022, recorded an increase of 6.4% (Table 6).

The average Overall Turnover Index in Industry for the 12-month period from July 2021 to June 2022 increased by 36.8%, compared with the corresponding index of the 12-month period from July 2020 to June 2021. The average Overall Turnover Index in Industry for the 12-month period from July 2020 to June 2021 increased by 2.6% compared with the corresponding index of the 12-month period from July 2019 to June 2020 (Table 13).



Information for methodological issues:

Division of Business Statistics
Section of Manufacture-Construction Indices and Industrial Products
Head of the Section : Diamantaki Aikaterini
Tel: +30 213 135 2056
E-mail: a.diamantaki@statistics.gr

Information for data provision:

Tel: +30 213 135 2022, 2308, 2310
E-mail: data.dissem@statistics.gr

Evolution of the Overall Turnover Index in Industry in June 2022

I. Annual changes of the Overall Turnover Index in Industry: June 2022/June 2021

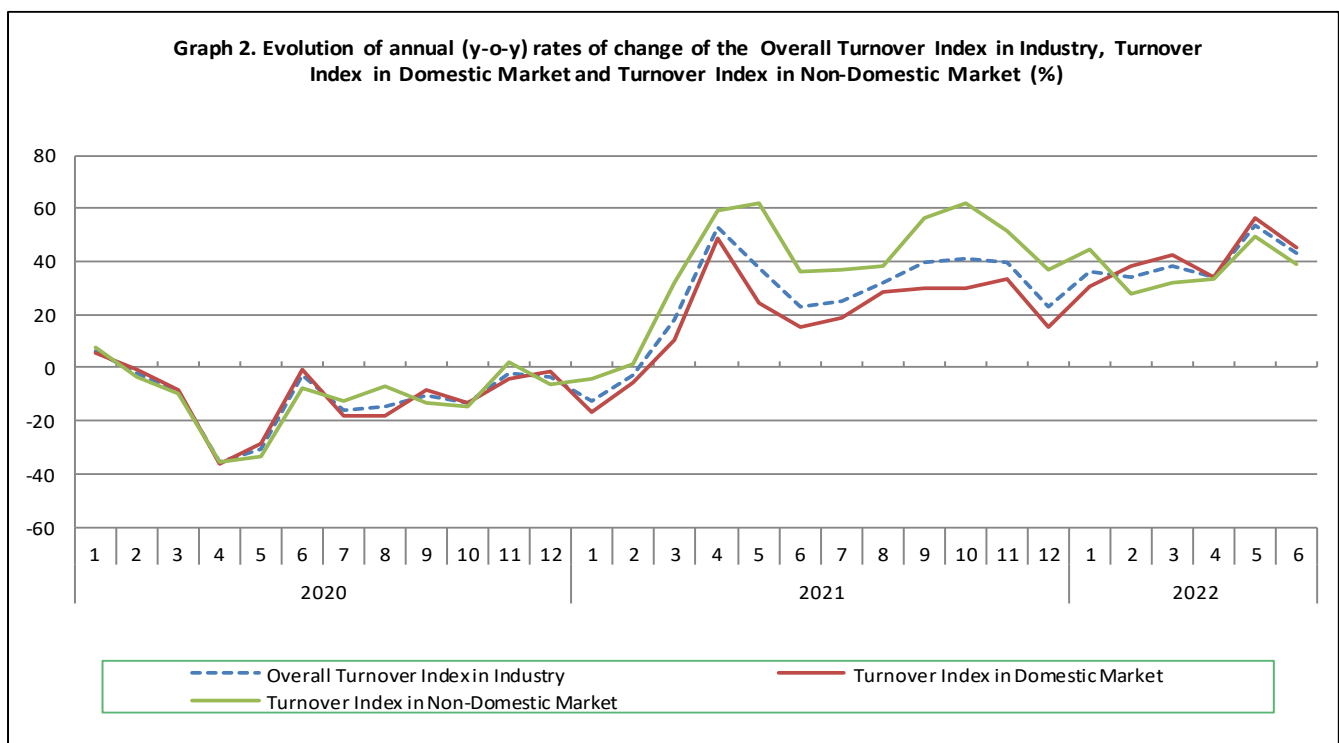
The 43.1% increase in the Overall Turnover Index in Industry in June 2022, compared with the corresponding index in June 2021, was due to the following:

1. Changes in the sub-indices of the industrial sections (Table 1):

- The Turnover Index in Manufacturing increased by 43.6%. The increase was mainly the result of the annual changes of the sub-indices in the following 2-digit divisions: coke and refined petroleum products, basic metals, chemicals and chemical products, food.
- The Turnover Index in Mining and quarrying increased by 4.4%. The increase was mainly the result of the annual changes of the sub-indices in the following 2-digit divisions: mining of coal and lignite - extraction of crude petroleum and natural gas - mining support service activities, other mining and quarrying products.

2. Changes in the sub-indices in Domestic and Non-Domestic Markets:

- The Turnover Index in Industry in Domestic Market increased by 45.6% (Table 2).
- The Turnover Index in Industry in Non-Domestic Market increased by 39.1% (Table 3).



II. Annual changes of the Turnover Index in Industry in Domestic Market: June 2022/June 2021

The 45.6% increase of the Turnover Index in Industry in Domestic Market in June 2022, compared with June 2021, is due to the annual changes in the sub-indices of the following industrial sections (Table 2):

- The Turnover Index in Manufacturing increased by 45.7%. The increase was mainly the result of the annual changes of the sub-indices in the following 2-digit divisions: coke and refined petroleum products, basic metals, chemicals and chemical products, food.
- The Turnover Index in Mining and quarrying increased by 24.6%. The increase was mainly the result of the annual changes of the sub-indices in the following 2-digit divisions: mining of metal ores, mining of coal and lignite - extraction of crude petroleum and natural gas - mining support service activities.

III. Annual changes of the Turnover Index in Industry in Non-Domestic Market: June 2022/June 2021

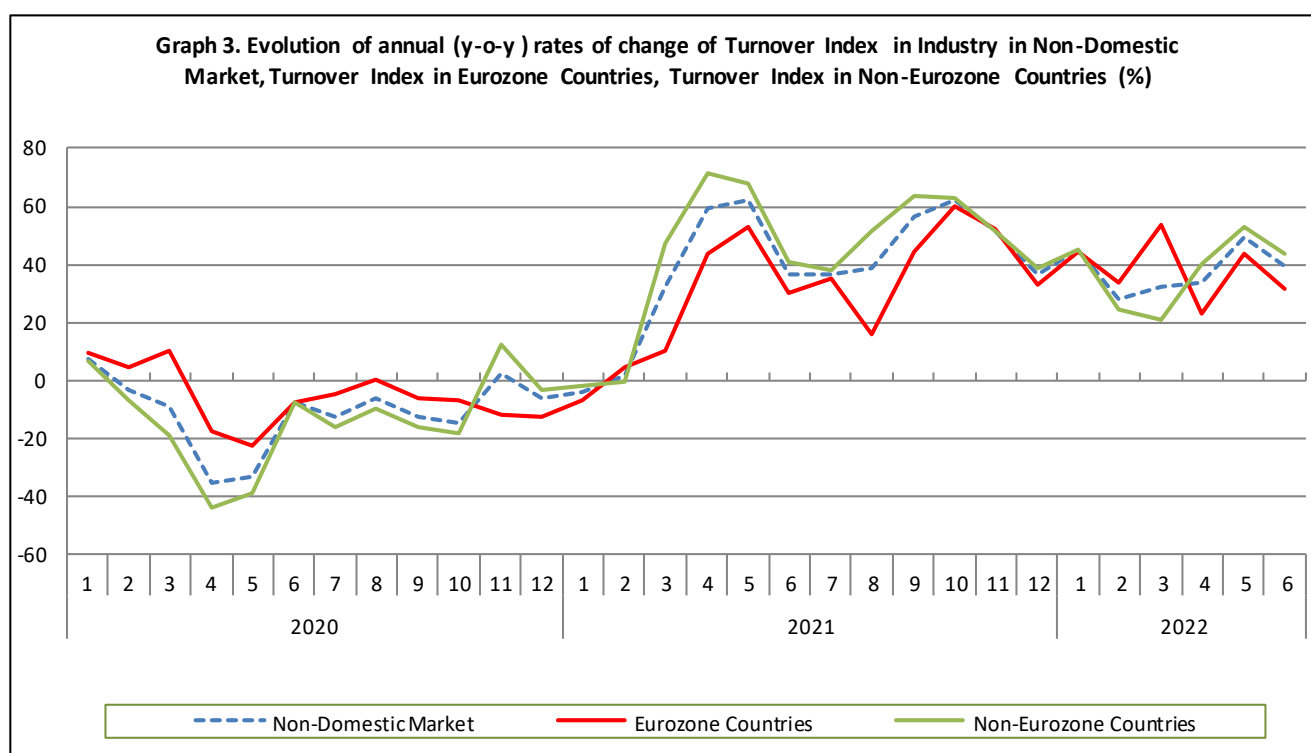
The 39.1% increase of the Turnover Index in Industry in Non-Domestic Market in June 2022, compared with June 2021, was due to the following:

1. Changes in the sub-indices of the industrial sections (Table 3):

- The Turnover Index in Manufacturing increased by 40.0%. The increase was mainly the result of the annual changes of the sub-indices in the following 2-digit divisions: basic metals, coke and refined petroleum products, chemicals and chemical products, food.
- The Turnover Index in Mining and quarrying decreased by 7.5%. The decrease was the result of the annual changes of the sub-indices in the following 2-digit divisions: mining of metal ores, other mining and quarrying products.

2. Changes in the sub-indices in Eurozone and Non-Eurozone countries:

- The Turnover Index in Industry in Non-Eurozone countries increased by 43.6% (Table 5).
- The Turnover Index in Industry in Eurozone countries increased by 31.5% (Table 4).



IV. Monthly changes of the Overall Turnover Index in Industry: June 2022/May 2022

The 6.4% increase of the Overall Turnover Index in Industry in June 2022, compared with the corresponding index in May 2022, was due to the following:

1. Changes in the sub-indices of industrial sections (Table 6):

- The Turnover Index in Mining and quarrying increased by 8.8%.
- The Turnover Index in Manufacturing increased by 6.4%.

2. Changes in the sub-indices in Domestic and Non-Domestic Market:

- The Turnover Index in Industry in Domestic Market increased by 12.2% (Table 7).
- The Turnover Index in Industry in Non-Domestic Market decreased by 2.2% (Table 8).

Table 1. Annual rates of change of the Turnover Index in Industry: Total Market
Base year: 2015=100.0

Code	Division	Weights	June			Rate of change (%)	
			2022*	2021*	2020	2022/2021	2021/2020
OVERALL INDEX			195.71	136.73	111.47	43.1	22.7
B	MINING AND QUARRYING	100.00	120.36	115.28	106.65	4.4	8.1
05-06-09	Mining of coal and lignite - Extraction of crude petroleum and natural gas - Mining support service activities	21.19	15.33	11.19	1.51	37.0	641.8
07	Mining of metal ores	17.56	226.02	224.28	219.86	0.8	2.0
08	Other mining and quarrying products	61.25	126.39	120.04	110.56	5.3	8.6
C	MANUFACTURING	100.00	196.73	137.02	111.53	43.6	22.9
10	Food	23.39	142.22	113.93	98.79	24.8	15.3
11	Beverages	3.57	203.32	156.75	129.53	29.7	21.0
12	Tobacco products	1.19	209.40	205.88	179.87	1.7	14.5
13	Textiles	1.28	162.82	137.62	113.57	18.3	21.2
14	Wearing apparel	1.80	84.91	82.85	64.35	2.5	28.8
15	Leather and related products	0.34	73.73	69.89	52.97	5.5	31.9
16	Wood and products of wood and cork, except furniture	0.72	178.72	130.39	105.39	37.1	23.7
17	Paper and paper products	2.44	170.79	124.16	115.05	37.6	7.9
18	Printing and reproduction of recorded products	1.17	126.56	112.25	94.68	12.7	18.6
19	Coke and refined petroleum products	28.73	251.69	125.95	98.18	99.8	28.3
20	Chemicals and chemical products	4.43	208.37	160.84	141.33	29.5	13.8
21	Basic pharmaceutical products and pharmaceutical preparations	3.67	224.56	191.01	180.50	17.6	5.8
22	Rubber and plastic products	3.47	176.61	148.00	126.63	19.3	16.9
23	Other non-metallic mineral products	3.31	167.66	137.03	112.17	22.4	22.2
24	Basic metals	7.19	252.56	161.78	119.05	56.1	35.9
25	Fabricated metal products, except machinery and equipment	4.51	159.57	141.28	109.64	12.9	28.9
26	Computers, electronic and optical products	0.78	253.05	195.09	154.92	29.7	25.9
27	Electrical equipment	2.65	221.52	265.57	180.48	-16.6	47.1
28	Machinery and equipment n.e.c.	1.56	157.15	135.78	107.50	15.7	26.3
29	Motor vehicles, trailers and semi-trailers	0.23	195.95	120.95	108.86	62.0	11.1
30	Other transport equipment	0.52	119.26	84.47	77.79	41.2	8.6
31	Furniture	0.97	191.43	161.57	133.32	18.5	21.2
32	Other manufacturing	0.66	158.28	132.85	96.81	19.1	37.2
33	Repair and installation of machinery and equipment	1.42	129.15	121.73	87.20	6.1	39.6
MAIN INDUSTRIAL GROUPINGS							
1	Energy	28.57	249.89	125.08	97.43	99.8	28.4
2	Intermediate goods	28.29	200.43	155.91	124.16	28.6	25.6
3	Capital goods	7.00	159.59	137.36	106.22	16.2	29.3
4	Consumer Durables	1.86	173.36	144.03	116.11	20.4	24.0
5	Consumer Non-Durables	34.28	155.24	130.10	113.51	19.3	14.6

* Provisional data

Note: The indices and the percentage changes are rounded up to two and one decimal digits, respectively, when published.

Table 2. Annual rates of change of the Turnover Index in Industry: Domestic Market

Base year: 2015=100.0

Code	Division	Weights	June			Rate of change (%)	
			2022*	2021*	2020	2022/2021	2021/2020
OVERALL INDEX			186.41	128.04	110.82	45.6	15.5
B	MINING AND QUARRYING	100.00	94.07	75.51	69.14	24.6	9.2
05-06-09	Mining of coal and lignite - Extraction of crude petroleum and natural gas - Mining support service activities	31.66	18.12	13.23	1.78	37.0	641.8
07	Mining of metal ores	12.83	139.51	84.84	115.95	64.4	-26.8
08	Other mining and quarrying products	55.50	126.89	108.87	96.74	16.5	12.5
C	MANUFACTURING	100.00	187.47	128.65	111.30	45.7	15.6
10	Food	28.50	128.61	104.36	93.14	23.2	12.0
11	Beverages	4.86	203.15	155.96	128.13	30.3	21.7
12	Tobacco products	0.51	308.74	342.42	194.74	-9.8	75.8
13	Textiles	1.11	159.81	136.18	105.61	17.4	28.9
14	Wearing apparel	1.77	89.83	82.38	63.80	9.0	29.1
15	Leather and related products	0.41	77.88	72.37	56.97	7.6	27.0
16	Wood and products of wood and cork, except furniture	0.96	173.13	122.44	105.15	41.4	16.4
17	Paper and paper products	3.12	166.44	120.90	110.32	37.7	9.6
18	Printing and reproduction of recorded products	1.63	114.24	97.13	78.45	17.6	23.8
19	Coke and refined petroleum products	24.90	258.24	105.02	103.14	145.9	1.8
20	Chemicals and chemical products	4.90	206.17	163.76	147.24	25.9	11.2
21	Basic pharmaceutical products and pharmaceutical preparations	3.85	197.30	175.91	154.32	12.2	14.0
22	Rubber and plastic products	3.31	174.05	148.73	129.69	17.0	14.7
23	Other non-metallic mineral products	3.31	169.94	140.48	122.16	21.0	15.0
24	Basic metals	3.49	300.48	205.50	139.82	46.2	47.0
25	Fabricated metal products, except machinery and equipment	4.25	183.50	163.28	123.45	12.4	32.3
26	Computers, electronic and optical products	0.40	160.41	106.38	163.58	50.8	-35.0
27	Electrical equipment	2.24	218.08	272.71	213.54	-20.0	27.7
28	Machinery and equipment n.e.c.	1.46	157.12	149.24	107.18	5.3	39.2
29	Motor vehicles, trailers and semi-trailers	0.27	212.57	123.77	118.48	71.7	4.5
30	Other transport equipment	0.58	80.78	67.30	65.09	20.0	3.4
31	Furniture	1.35	180.80	152.75	124.25	18.4	22.9
32	Other manufacturing	0.88	156.87	125.89	92.05	24.6	36.8
33	Repair and installation of machinery and equipment	1.92	133.70	130.19	91.15	2.7	42.8
MAIN INDUSTRIAL GROUPINGS							
1	Energy	24.89	255.73	104.07	102.04	145.7	2.0
2	Intermediate goods	25.73	193.65	156.14	130.56	24.0	19.6
3	Capital goods	7.19	160.56	145.50	110.38	10.3	31.8
4	Consumer Durables	2.31	161.08	135.94	110.13	18.5	23.4
5	Consumer Non-Durables	39.88	144.60	121.26	103.68	19.2	17.0

* Provisional data

Note: The indices and the percentage changes are rounded up to two and one decimal digits, respectively, when published.

Table 3. Annual rates of change of the Turnover Index in Industry: Non-Domestic Market

Base year: 2015=100.0

Code	Division	Weights	June			Rate of change (%)	
			2022*	2021*	2020	2022/2021	2021/2020
OVERALL INDEX			214.04	153.86	112.74	39.1	36.5
B	MINING AND QUARRYING	100.00	154.66	167.19	155.59	-7.5	7.5
05-06-09	Mining of coal and lignite - Extraction of crude petroleum and natural gas - Mining support service activities	7.53	0.00	0.00	0.00	-	-
07	Mining of metal ores	23.74	287.06	322.68	293.18	-11.0	10.1
08	Other mining and quarrying products	68.74	125.88	131.81	125.12	-4.5	5.3
C MANUFACTURING		100.00	215.08	153.63	111.99	40.0	37.2
10	Food	13.27	200.12	154.67	122.83	29.4	25.9
11	Beverages	1.01	204.93	164.25	142.89	24.8	15.0
12	Tobacco products	2.53	169.34	150.82	173.87	12.3	-13.3
13	Textiles	1.61	166.94	139.58	124.50	19.6	12.1
14	Wearing apparel	1.86	75.63	83.74	65.38	-9.7	28.1
15	Leather and related products	0.19	55.89	59.25	35.80	-5.7	65.5
16	Wood and products of wood and cork, except furniture	0.24	223.04	193.47	107.32	15.3	80.3
17	Paper and paper products	1.11	194.98	142.27	141.40	37.0	0.6
18	Printing and reproduction of recorded products	0.26	279.95	300.52	296.86	-6.8	1.2
19	Coke and refined petroleum products	36.32	242.79	154.40	91.45	57.2	68.8
20	Chemicals and chemical products	3.50	214.45	152.77	124.99	40.4	22.2
21	Basic pharmaceutical products and pharmaceutical preparations	3.30	287.54	225.91	241.01	27.3	-6.3
22	Rubber and plastic products	3.79	181.04	146.74	121.33	23.4	20.9
23	Other non-metallic mineral products	3.31	163.14	130.18	92.37	25.3	40.9
24	Basic metals	14.54	229.77	141.00	109.18	63.0	29.1
25	Fabricated metal products, except machinery and equipment	5.03	119.48	104.41	86.50	14.4	20.7
26	Computers, electronic and optical products	1.52	301.25	241.25	150.41	24.9	60.4
27	Electrical equipment	3.44	225.96	256.34	137.77	-11.9	86.1
28	Machinery and equipment n.e.c.	1.76	157.19	113.67	108.02	38.3	5.2
29	Motor vehicles, trailers and semi-trailers	0.14	131.19	109.95	71.42	19.3	54.0
30	Other transport equipment	0.40	228.91	133.41	113.98	71.6	17.0
31	Furniture	0.21	326.81	273.97	248.83	19.3	10.1
32	Other manufacturing	0.22	169.17	186.80	133.75	-9.4	39.7
33	Repair and installation of machinery and equipment	0.43	89.17	47.38	52.51	88.2	-9.8
MAIN INDUSTRIAL GROUPINGS							
1	Energy	35.82	241.91	153.84	91.12	57.2	68.8
2	Intermediate goods	33.33	210.75	155.56	114.41	35.5	36.0
3	Capital goods	6.62	157.52	119.96	97.32	31.3	23.3
4	Consumer Durables	0.98	230.51	181.68	143.95	26.9	26.2
5	Consumer Non-Durables	23.25	191.20	159.95	146.76	19.5	9.0

* Provisional data

Note: The indices and the percentage changes are rounded up to two and one decimal digits, respectively, when published.

Table 4. Annual rates of change of the Turnover Index in Industry: Eurozone Countries

Base year: 2015=100.0

Code	Sections and main groupings	June			Rate of change (%)	
		2022*	2021*	2020	2022/2021	2021/2020
OVERALL INDEX		217.11	165.12	127.26	31.5	29.7
INDUSTRIAL SECTIONS						
B	MINING AND QUARRYING	237.59	158.52	110.64	49.9	43.3
C	MANUFACTURING	216.70	165.25	127.60	31.1	29.5
MAIN INDUSTRIAL GROUPINGS						
1	Energy	197.74	130.66	80.42	51.3	62.5
2	Intermediate goods	232.26	168.17	121.67	38.1	38.2
3	Capital goods	201.14	151.08	132.97	33.1	13.6
4	Consumer Durables	363.43	287.94	249.28	26.2	15.5
5	Consumer Non-Durables	210.50	183.48	161.32	14.7	13.7

* Provisional data

Table 5. Annual rates of change of the Turnover Index in Industry: Non-Eurozone Countries

Base year: 2015=100.0

Code	Sections and main groupings	June			Rate of change (%)	
		2022*	2021*	2020	2022/2021	2021/2020
OVERALL INDEX		212.40	147.88	105.03	43.6	40.8
INDUSTRIAL SECTIONS						
B	MINING AND QUARRYING	100.22	172.89	185.10	-42.0	-6.6
C	MANUFACTURING	214.22	147.47	103.73	45.3	42.2
MAIN INDUSTRIAL GROUPINGS						
1	Energy	254.63	160.52	94.20	58.6	70.4
2	Intermediate goods	196.73	147.34	109.68	33.5	34.3
3	Capital goods	142.74	109.41	85.23	30.5	28.4
4	Consumer Durables	138.72	108.30	71.22	28.1	52.1
5	Consumer Non-Durables	172.43	137.05	132.59	25.8	3.4

* Provisional data

Note: The indices and the percentage changes are rounded up to two and one decimal digits, respectively, when published.

Table 6. Monthly rate of change of the Turnover Index in Industry: Total Market

Base year: 2015=100.0

Code	Sections and main groupings	June 2022*	May 2022**	Rate of change (%) June 2022/May 2022
OVERALL INDEX		195.71	183.92	6.4
INDUSTRIAL SECTIONS				
B	MINING AND QUARRYING	120.36	110.64	8.8
C	MANUFACTURING	196.73	184.92	6.4
MAIN INDUSTRIAL GROUPINGS				
1	Energy	249.89	228.89	9.2
2	Intermediate goods	200.43	196.49	2.0
3	Capital goods	159.59	140.30	13.7
4	Consumer Durables	173.36	160.29	8.2
5	Consumer Non-Durables	155.24	146.27	6.1

Table 7. Monthly rate of change of the Turnover Index in Industry: Domestic Market

Base year: 2015=100.0

Code	Sections and main groupings	June 2022*	May 2022**	Rate of change (%) June 2022/May 2022
OVERALL INDEX		186.41	166.20	12.2
INDUSTRIAL SECTIONS				
B	MINING AND QUARRYING	94.07	95.21	-1.2
C	MANUFACTURING	187.47	167.02	12.2
MAIN INDUSTRIAL GROUPINGS				
1	Energy	255.73	201.43	27.0
2	Intermediate goods	193.65	187.11	3.5
3	Capital goods	160.56	147.95	8.5
4	Consumer Durables	161.08	150.61	7.0
5	Consumer Non-Durables	144.60	134.93	7.2

Table 8. Monthly rate of change of the Turnover Index in Industry: Non-Domestic Market

Base year: 2015=100.0

Code	Sections and main groupings	June 2022*	May 2022**	Rate of change (%) June 2022/May 2022
OVERALL INDEX		214.04	218.83	-2.2
INDUSTRIAL SECTIONS				
B	MINING AND QUARRYING	154.66	130.77	18.3
C	MANUFACTURING	215.08	220.37	-2.4
MAIN INDUSTRIAL GROUPINGS				
1	Energy	241.91	266.47	-9.2
2	Intermediate goods	210.75	210.77	0.0
3	Capital goods	157.52	123.94	27.1
4	Consumer Durables	230.51	205.38	12.2
5	Consumer Non-Durables	191.20	184.57	3.6

* Provisional data ** Revised data

Note: The indices and the percentage changes are rounded up to two and one decimal digits, respectively, when published.

Table 9. Monthly rate of change of the Turnover Index in Industry: Eurozone Countries

Base year: 2015=100.0

Code	Sections and main groupings	June 2022*	May 2022**	Rate of change (%) June 2022/May 2022
OVERALL INDEX		217.11	232.74	-6.7
INDUSTRIAL SECTIONS				
B	MINING AND QUARRYING	237.59	117.32	102.5
C	MANUFACTURING	216.70	235.05	-7.8
MAIN INDUSTRIAL GROUPINGS				
1	Energy	197.74	312.89	-36.8
2	Intermediate goods	232.26	224.57	3.4
3	Capital goods	201.14	149.03	35.0
4	Consumer Durables	363.43	301.42	20.6
5	Consumer Non-Durables	210.50	195.95	7.4

* Provisional data ** Revised data

Table 10. Monthly rate of change of the Turnover Index in Industry: Non-Eurozone Countries

Base year: 2015=100.0

Code	Sections and main groupings	June 2022*	May 2022**	Rate of change (%) June 2022/May 2022
OVERALL INDEX		212.40	211.44	0.5
INDUSTRIAL SECTIONS				
B	MINING AND QUARRYING	100.22	139.60	-28.2
C	MANUFACTURING	214.22	212.60	0.8
MAIN INDUSTRIAL GROUPINGS				
1	Energy	254.63	253.11	0.6
2	Intermediate goods	196.73	201.77	-2.5
3	Capital goods	142.74	115.44	23.7
4	Consumer Durables	138.72	139.06	-0.3
5	Consumer Non-Durables	172.43	173.49	-0.6

* Provisional data ** Revised data

Note: The indices and the percentage changes are rounded up to two and one decimal digits, respectively, when published.

Table 11. Evolution of the Turnover Index in Industry (y-o-y changes): Total Market

Base year: 2015=100.0

Year and month	Overall Index (Total Market)		Turnover Index in Industry in Domestic Market		Turnover Index in Industry in Non-Domestic Market	
	Index	Annual rate of change (%)	Index	Annual rate of change (%)	Index	Annual rate of change (%)
2021*: 6	136.73	22.7	128.04	15.5	153.86	36.5
7	138.96	25.1	128.41	18.7	159.75	36.7
8	115.35	31.7	111.15	28.2	123.62	38.5
9	144.62	39.6	131.55	30.3	170.36	56.5
10	138.80	41.1	125.92	30.0	164.19	61.9
11	144.86	39.9	132.69	33.2	168.86	51.5
12	144.88	22.8	133.36	15.2	167.59	37.1
2022*: 1	118.72	36.3	105.71	30.9	144.35	44.9
2	135.81	34.1	128.48	38.2	150.26	27.7
3	167.15	38.3	152.84	42.7	195.35	32.1
4	163.39	33.8	149.42	34.0	190.93	33.5
5	183.92	53.7	166.20	56.7	218.83	49.4
6	195.71	43.1	186.41	45.6	214.04	39.1

*Provisional data

Table 12. Evolution of the Turnover Index in Industry (y-o-y changes): Non-Domestic Market

Base year: 2015=100.0

Year and month	Overall Index (Non-Domestic Market)		Turnover Index in Industry in Eurozone Countries		Turnover Index in Industry in Non-Eurozone Countries	
	Index	Annual rate of change (%)	Index	Annual rate of change (%)	Index	Annual rate of change (%)
2021*: 6	153.86	36.5	165.12	29.7	147.88	40.8
7	159.75	36.7	164.56	35.5	157.19	37.4
8	123.62	38.5	107.12	16.8	132.39	50.6
9	170.36	56.5	162.77	44.4	174.40	63.3
10	164.19	61.9	170.44	60.3	160.87	62.8
11	168.86	51.5	171.78	51.8	167.30	51.4
12	167.59	37.1	143.98	33.3	180.14	38.8
2022*: 1	144.35	44.9	156.46	44.2	137.92	45.3
2	150.26	27.7	172.98	33.8	138.18	23.9
3	195.35	32.1	226.03	53.7	179.04	20.7
4	190.93	33.5	191.06	22.6	190.86	40.0
5	218.83	49.4	232.74	43.7	211.44	52.9
6	214.04	39.1	217.11	31.5	212.40	43.6

*Provisional data

Note: The indices and the percentage changes are rounded up to two and one decimal digits, respectively, when published.

Table 13. Average indices and rates of change (%) of the 12-month periods of Turnover Index in Industry: Total Market
Base year: 2015=100.0

Code	Division	Average Indices of 12-month periods			Rate of change (%)	
		July 2021*- June 2022*	July 2020- June 2021*	July 2019- June 2020	2022/2021	2021/2020
OVERALL INDEX		149.35	109.16	106.41	36.8	2.6
B	MINING AND QUARRYING	103.13	103.59	98.66	-0.4	5.0
05-06-09	Mining of coal and lignite - Extraction of crude petroleum and natural gas - Mining support service activities	24.11	32.43	43.61	-25.6	-25.6
07	Mining of metal ores	162.78	179.65	171.74	-9.4	4.6
08	Other mining and quarrying products	113.37	106.40	96.74	6.6	10.0
C	MANUFACTURING	149.98	109.24	106.52	37.3	2.6
10	Food	124.53	106.28	103.75	17.2	2.4
11	Beverages	128.31	106.20	103.57	20.8	2.5
12	Tobacco products	148.18	141.76	132.16	4.5	7.3
13	Textiles	127.35	109.28	99.09	16.5	10.3
14	Wearing apparel	90.52	69.00	80.59	31.2	-14.4
15	Leather and related products	76.75	56.20	74.01	36.6	-24.1
16	Wood and products of wood and cork, except furniture	133.73	108.45	102.31	23.3	6.0
17	Paper and paper products	136.37	112.55	114.81	21.2	-2.0
18	Printing and reproduction of recorded products	107.25	91.23	91.99	17.6	-0.8
19	Coke and refined petroleum products	163.51	88.69	99.86	84.3	-11.2
20	Chemicals and chemical products	162.49	126.72	117.56	28.2	7.8
21	Basic pharmaceutical products and pharmaceutical preparations	198.64	174.48	155.80	13.8	12.0
22	Rubber and plastic products	148.81	119.27	107.31	24.8	11.1
23	Other non-metallic mineral products	135.34	112.76	103.07	20.0	9.4
24	Basic metals	206.65	135.71	117.68	52.3	15.3
25	Fabricated metal products, except machinery and equipment	133.31	109.32	96.61	21.9	13.2
26	Computers, electronic and optical products	204.20	172.85	166.21	18.1	4.0
27	Electrical equipment	199.97	166.03	127.75	20.4	30.0
28	Machinery and equipment n.e.c.	133.48	115.91	103.54	15.2	11.9
29	Motor vehicles, trailers and semi-trailers	160.44	108.53	111.49	47.8	-2.7
30	Other transport equipment	79.08	73.08	57.68	8.2	26.7
31	Furniture	142.03	113.47	103.22	25.2	9.9
32	Other manufacturing	123.75	98.38	94.03	25.8	4.6
33	Repair and installation of machinery and equipment	106.61	104.47	95.19	2.1	9.7
MAIN INDUSTRIAL GROUPINGS						
1	Energy	162.48	88.32	99.51	84.0	-11.2
2	Intermediate goods	163.84	124.43	111.19	31.7	11.9
3	Capital goods	131.37	113.37	102.29	15.9	10.8
4	Consumer Durables	133.19	108.63	98.43	22.6	10.4
5	Consumer Non-Durables	131.00	113.11	109.49	15.8	3.3

*Provisional data

Note: The indices and the percentage changes are rounded up to two and one decimal digits, respectively, when published.

METHODOLOGICAL NOTES

Generally	The Industrial Turnover Index is an indicator of an enterprise's business cycle showing the monthly evolution of the market of goods and services in industry. The first compilation of the Turnover Index was completed by the Hellenic Statistical Authority in 2006, with base year 2000=100.0 and is compiled from 2000 onwards.
Purpose of the index	The purpose of this index is to measure the monthly activity of the industrial sector in terms of value. Turnover comprises the totals invoiced by the observation units during the reference period and corresponds to the market sales of goods or services supplied to third parties. The purposes and the characteristics of the Turnover Index apply, as well, to the indices for the distinction between domestic and non-domestic turnover.
Legal Framework	The compilation and publication of the Turnover Index is based on the framework of the implementation of Council Regulation (EC) No 1165/1998 concerning short-term statistics (STS-R), as well as Regulation (EC) No 1158/2005 of the European Parliament and of the Council amending Council Regulation (EC) No 1165/1998. Furthermore, this index is governed by Regulation (EC) No 1893/2006 of the European Parliament and of the Council, by Commission Regulation (EC) No 656/2007, by Regulation (EC) No 451/2008 of the Council, by Regulation (EU) No 2019/2152 of the European Parliament and of the Council on European business statistics, as well as Commission Implementing Regulation (EU) No 2020/1197 laying down technical specifications and arrangements pursuant to Regulation (EU) No 2019/2152.
Reference period	Month.
Base year	2015=100.0.
Revision	The latest revision of the Turnover Index in Industry (base year 2015=100.0) took place in the framework of Council Regulation (EC) No 1165/1998 concerning short-term statistics. In accordance with this regulation the index is revised every five years, in years ending in 0 or 5.
Statistical classifications	At the level of classes of economic activities, the statistical classification of economic activities NACE Rev. 2 of EU was used (Regulation No 1893/2006), while at the level of main industrial groupings, the allocation of two-digit and three-digit NACE Rev. 2 headings to categories of aggregate classification was used, in accordance with Commission Regulation No 656/2007.
Geographical coverage	The index covers the whole Country.
Coverage of economic activities	The Turnover Index in Industry is compiled for all activities listed in Sections B (mining and quarrying) and C (manufacturing) of the NACE Rev. 2 statistical classification.
Computation of the Index	The Turnover Index in Industry is a fixed base index. This index is calculated at a first stage at the four-digit level of economic activity and subsequently, with the implementation of appropriate weighting coefficients, the index is calculated at higher levels (three-level and two-level of economic activity) as well as at the level of Main Industrial Groupings (MIGs).
Publication of data	The Turnover Index in Industry (2015=100.0) is released since August 2019 with June 2019 as first reference month. Data with base year 2015=100.0 are available from January 2000 onwards.
References	More information about the methodology concerning the compilation and calculation of the index and for the time series is available on the website of the Hellenic Statistical Authority (ELSTAT) (http://www.statistics.gr/en/statistics/-/publication/DKT24/).