



ISSUING OF MOTOR VEHICLE LICENSES: JANUARY 2025

The Hellenic Statistical Authority announces that in January 2025, 21,762 road motor cars (both new and used from abroad) were put into circulation for the first time, recording a 3.4% decrease compared with the corresponding month of 2024 when the number of road motor cars was 22,539. In January 2024, a 6.7% increase had been observed in comparison with the corresponding month of 2023 (Table 1, Graphs 1,2,3,5). A total number of 11,563 new cars were put into circulation in January 2025 compared with 13,708 in January 2024, recording a 15.6% decrease.

The new motorcycles over 50cc (both new and used from abroad) that were put into circulation for the first time in January 2025 amounted to 3,684, against 4,953 in 2024, thus recording a 25.6% decrease. In January 2024, an 18.3% increase had been observed in comparison with the corresponding month of 2023 (Table 1, Graph 4). Out of the above motorcycles 3,390 were new, while the corresponding figure in January 2024 was 4,639, recording a 26.9% decrease.

Information on methodological issues:

Sectoral Statistics Division

Transport Statistics Section

Elpida Kleftogianni, Konstantinos Menexes

Tel: +30 213 135 3087, +30 213 135 3055

e-mail: e.kleftogianni@statistics.gr, k.menexes@statistics.gr

Information for data provision:

Tel: +30 213 135 2022

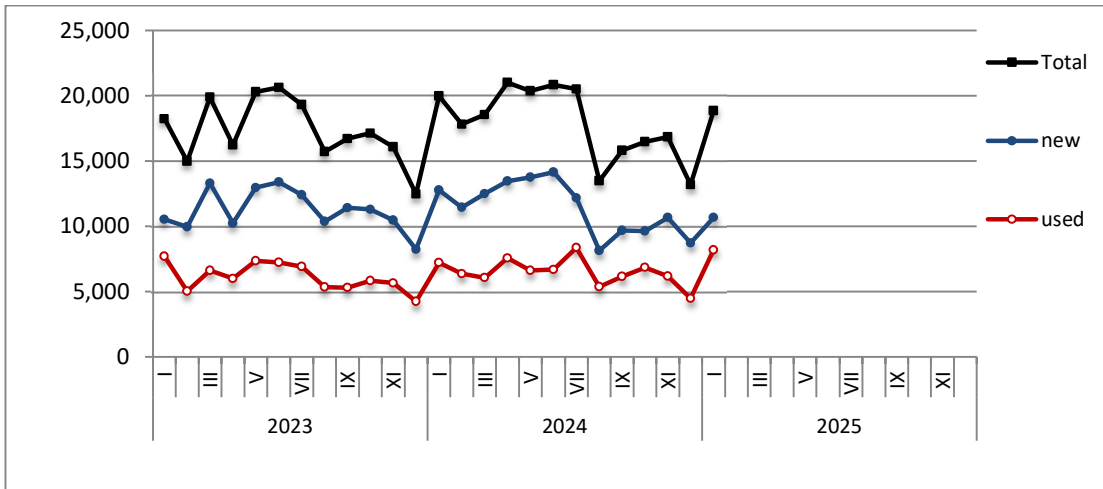
e-mail: data.dissem@statistics.gr

| Table 1. Road motor vehicles, both new and used, put into circulation for the first time in Greece: January 2023 - 2025 | | | | | | | | | | | | | | | |
|---|---------|--------|-------|--------|--------|-------|--------|--------|--------|------------|--------|--------|-----------|--------|--------|
| Category of Road Motor Vehicles | January | | | | | | | | | Change (%) | | | | | |
| | 2023 | | | 2024 | | | 2025 | | | 2024/2023 | | | 2025/2024 | | |
| | Total | New | Used | Total | New | Used | Total | New | Used | Total | New | Used | Total | New | Used |
| Greece, total | | | | | | | | | | | | | | | |
| Road Motor Vehicles, total | 25,316 | 15,502 | 9,814 | 27,492 | 18,347 | 9,145 | 25,446 | 14,953 | 10,493 | 8.6% | 18.4% | -6.8% | -7.4% | -18.5% | 14.7% |
| 1. Road motor cars | 21,129 | 11,638 | 9,491 | 22,539 | 13,708 | 8,831 | 21,762 | 11,563 | 10,199 | 6.7% | 17.8% | -7.0% | -3.4% | -15.6% | 15.5% |
| Passenger Cars | 18,218 | 10,533 | 7,685 | 19,966 | 12,762 | 7,204 | 18,837 | 10,662 | 8,175 | 9.6% | 21.2% | -6.3% | -5.7% | -16.5% | 13.5% |
| Buses | 130 | 23 | 107 | 78 | 32 | 46 | 208 | 133 | 75 | -40.0% | 39.1% | -57.0% | 166.7% | 315.6% | 63.0% |
| Lorries | 2,781 | 1,082 | 1,699 | 2,495 | 914 | 1,581 | 2,717 | 768 | 1,949 | -10.3% | -15.5% | -6.9% | 8.9% | -16.0% | 23.3% |
| 2. Motorcycles > 50 cc | 4,187 | 3,864 | 323 | 4,953 | 4,639 | 314 | 3,684 | 3,390 | 294 | 18.3% | 20.1% | -2.8% | -25.6% | -26.9% | -6.4% |
| Prefecture of Attica | | | | | | | | | | | | | | | |
| Road Motor Vehicles, total | 14,213 | 10,167 | 4,046 | 15,485 | 11,961 | 3,524 | 13,737 | 10,065 | 3,672 | 8.9% | 17.6% | -12.9% | -11.3% | -15.9% | 4.2% |
| 1. Road motor cars | 11,908 | 7,978 | 3,930 | 12,834 | 9,443 | 3,391 | 11,794 | 8,216 | 3,578 | 7.8% | 18.4% | -13.7% | -8.1% | -13.0% | 5.5% |
| Passenger Cars | 10,675 | 7,282 | 3,393 | 11,784 | 8,845 | 2,939 | 10,604 | 7,574 | 3,030 | 10.4% | 21.5% | -13.4% | -10.0% | -14.4% | 3.1% |
| Buses | 79 | 19 | 60 | 43 | 23 | 20 | 149 | 118 | 31 | -45.6% | 21.1% | -66.7% | 246.5% | 413.0% | 55.0% |
| Lorries | 1,154 | 677 | 477 | 1,007 | 575 | 432 | 1,041 | 524 | 517 | -12.7% | -15.1% | -9.4% | 3.4% | -8.9% | 19.7% |
| 2. Motorcycles > 50 cc | 2,305 | 2,189 | 116 | 2,651 | 2,518 | 133 | 1,943 | 1,849 | 94 | 15.0% | 15.0% | 14.7% | -26.7% | -26.6% | -29.3% |

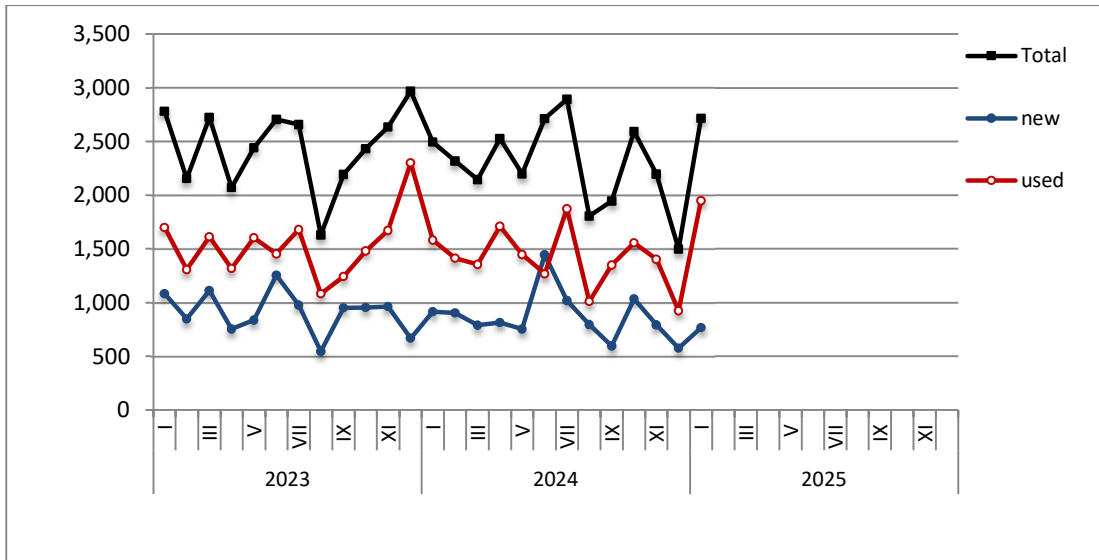
Table 2. Road motor vehicles, both new and used, put into circulation for the first time in Greece: February 2023 - January 2025

| Category of Road Motor Vehicles | Average Feb. 2023 - Jan 2024 | | | Average Feb. 2024 - Jan 2025 | | | Change (%) | | |
|---------------------------------|------------------------------|--------|-------|------------------------------|--------|-------|---|--------|-------|
| | | | | | | | Average Feb. 2024 - Jan 2025 / Average Feb. 2023 - Jan 2024 | | |
| | Total | New | Used | Total | New | Used | Total | New | Used |
| Greece, total | | | | | | | | | |
| Road Motor Vehicles, total | 25,809 | 17,860 | 7,949 | 26,971 | 18,572 | 8,399 | 4.5% | 4.0% | 5.7% |
| 1. Road motor cars | 19,960 | 12,311 | 7,649 | 20,252 | 12,178 | 8,074 | 1.5% | -1.1% | 5.6% |
| Passenger Cars | 17,443 | 11,391 | 6,052 | 17,803 | 11,240 | 6,563 | 2.1% | -1.3% | 8.4% |
| Buses | 92 | 23 | 69 | 153 | 80 | 73 | 66.3% | 247.8% | 5.8% |
| Lorries | 2,425 | 897 | 1,528 | 2,296 | 858 | 1,438 | -5.3% | -4.3% | -5.9% |
| 2. Motorcycles > 50 cc | 5,849 | 5,549 | 300 | 6,719 | 6,394 | 325 | 14.9% | 15.2% | 8.3% |

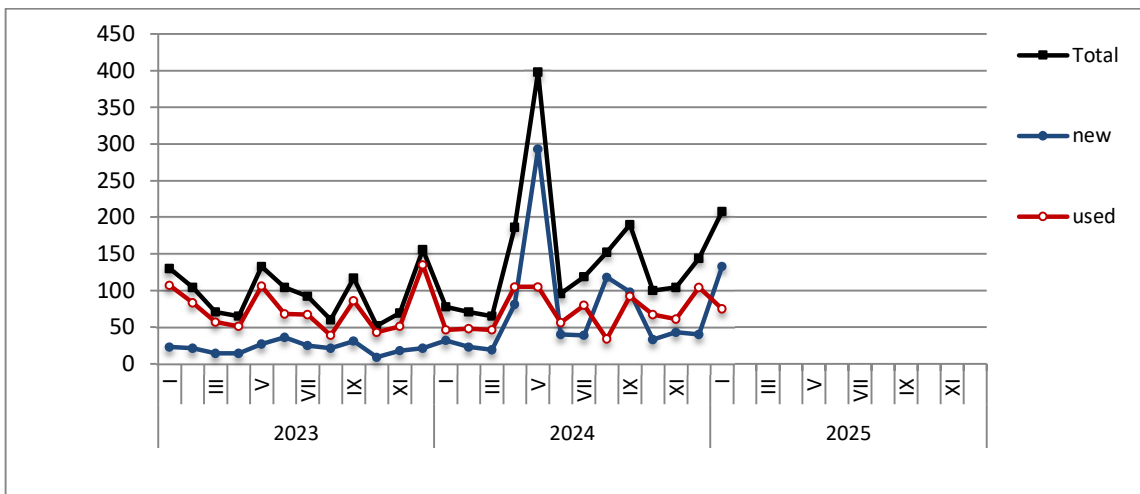
Graph 1: Passenger Cars (January 2023 - January 2025)



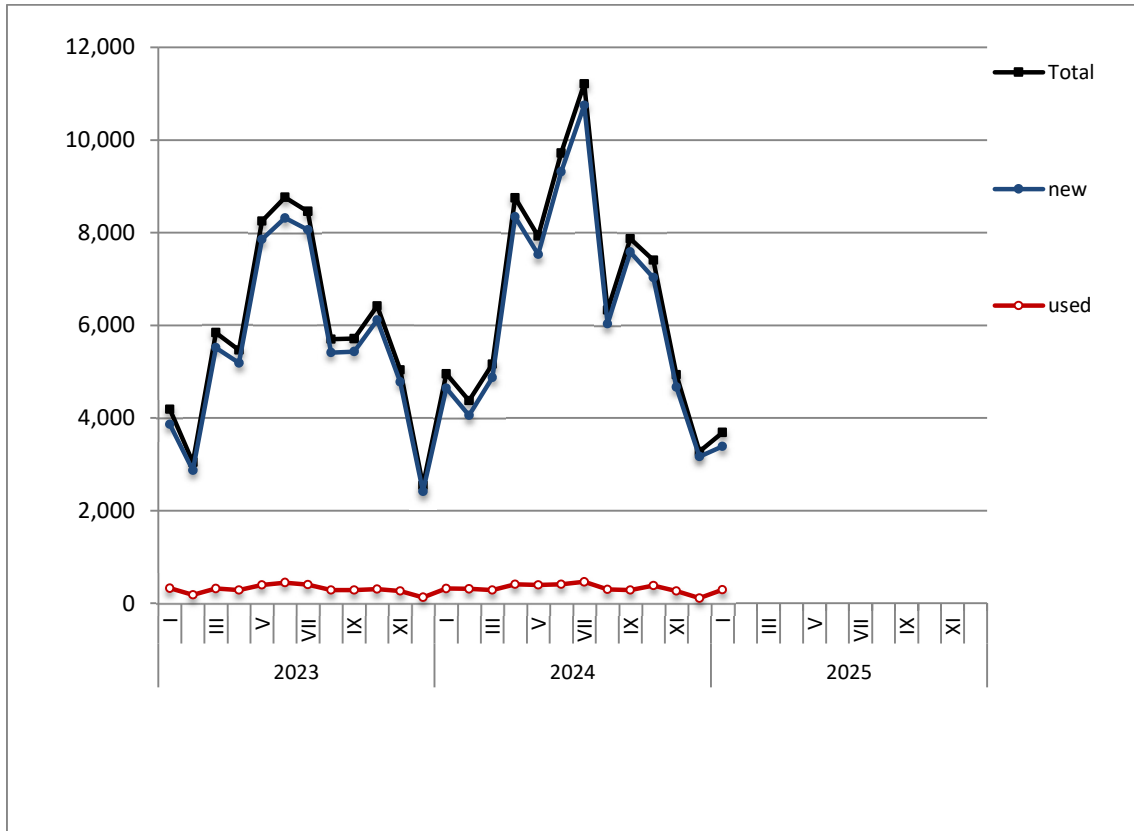
Graph 2: Lorries (January 2023 - January 2025)



Graph 3: Buses (January 2023 - January 2025)



Graph 4: Motorcycles (January 2023 - January 2025)



Graph 5: New Registrations of Motor Vehicles (January 2025)

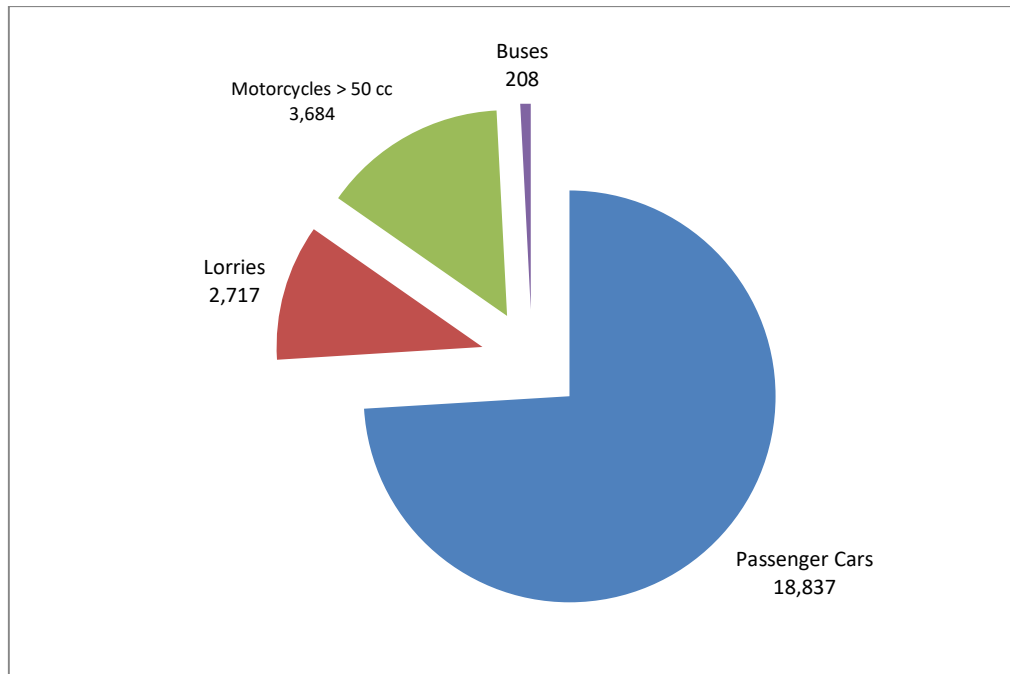


Table 3
Sales of new and used passenger cars by make: January 2025

| Make | Passenger cars | |
|--|----------------|------|
| | January | |
| | new | used |
| ABARTH | 1 | - |
| AIXAM | - | 1 |
| ALFA ROMEO | 76 | 44 |
| ALPINA | 1 | - |
| ASTON MARTIN | - | 2 |
| AUDI | 299 | 190 |
| AUTOCARABANS - RIMOR SPA | - | 2 |
| BAIC | - | 1 |
| BENTLEY | 1 | - |
| BMW | 561 | 298 |
| BURSTNER | - | 2 |
| BYD | 164 | - |
| CADILLAC | - | 1 |
| CAPRON | 1 | 8 |
| CHERY, EXEED, FOWNIX, CHIREY, CHERY EXEED, OMODA | 2 | - |
| CHERY, OMODA | 2 | - |
| CHEVROLET | - | 17 |
| CHEVROLET, GMC, HOLDEN, BUICK, PONTIAC | - | 1 |
| CITROEN | 611 | 416 |
| CITROEN / DS | 2 | 83 |
| CUPRA | 162 | 5 |
| DACIA | 161 | 222 |
| DAIHATSU | - | 2 |
| DFSK, SERES, SOKON, FENGON | 4 | - |
| DS | 40 | 29 |
| FERRARI | 1 | 4 |
| FIAT | 141 | 334 |
| FORD | 256 | 564 |
| HONDA | 25 | 69 |
| HYMER | 1 | 1 |
| HYUNDAI | 772 | 689 |
| INFINITY | - | 1 |
| JAECOO, OMODA, CHERY, FOWNIX, LUCANO | 2 | - |
| JAGUAR | 8 | 28 |
| JEEP | 232 | 67 |
| KERABOSS | 1 | - |
| KIA | 378 | 155 |
| KNAUS | - | 4 |
| LANCIA | - | 1 |
| LAND ROVER | 31 | 65 |
| LEAPMOTOR | 7 | - |
| LEXUS | 73 | 7 |
| LOTUS | - | 2 |
| LYNK&CO | 56 | - |
| MASERATI | 3 | 1 |
| MAZDA | 126 | 30 |
| MERCEDES | 172 | 660 |
| MERCEDES ¹ | 1 | - |

Table 3 (cont)
Sales of new and used passenger cars by make: January 2025

| Make | Passenger cars | |
|------------------------|----------------|--------------|
| | January | |
| | new | used |
| MG | 20 | 6 |
| MG, ROEWE | 441 | 9 |
| MINI | 121 | 57 |
| MITSUBISHI | 41 | 106 |
| MOOVEO | - | 1 |
| NISSAN | 314 | 529 |
| NISSAN ¹ | 1 | - |
| OPEL | 1,095 | 512 |
| PEUGEOT | 967 | 738 |
| PEUGEOT ² | 2 | - |
| PIAGGIO | - | 1 |
| PORSCHE | 36 | 56 |
| RANGE ROVER | 1 | 10 |
| RC FISHER A/S | - | 1 |
| RENAULT | 62 | 726 |
| SEAT | 42 | 54 |
| SKODA | 136 | 152 |
| SMART | 4 | 103 |
| SSANGYONG, KG MOBILITY | 13 | - |
| SUBARU | - | 11 |
| SUZUKI | 457 | 155 |
| TESLA | 64 | 9 |
| TOYOTA | 1,873 | 567 |
| VOLKSWAGEN | 527 | 334 |
| VOLVO | 71 | 32 |
| TOTAL | 10,662 | 8,175 |

1 : With 2nd/3rd stage manufacturer in Greece.

2 : With 2nd/3rd stage manufacturer abroad.

Graph 6. Sales of new passenger cars by make (January 2025)

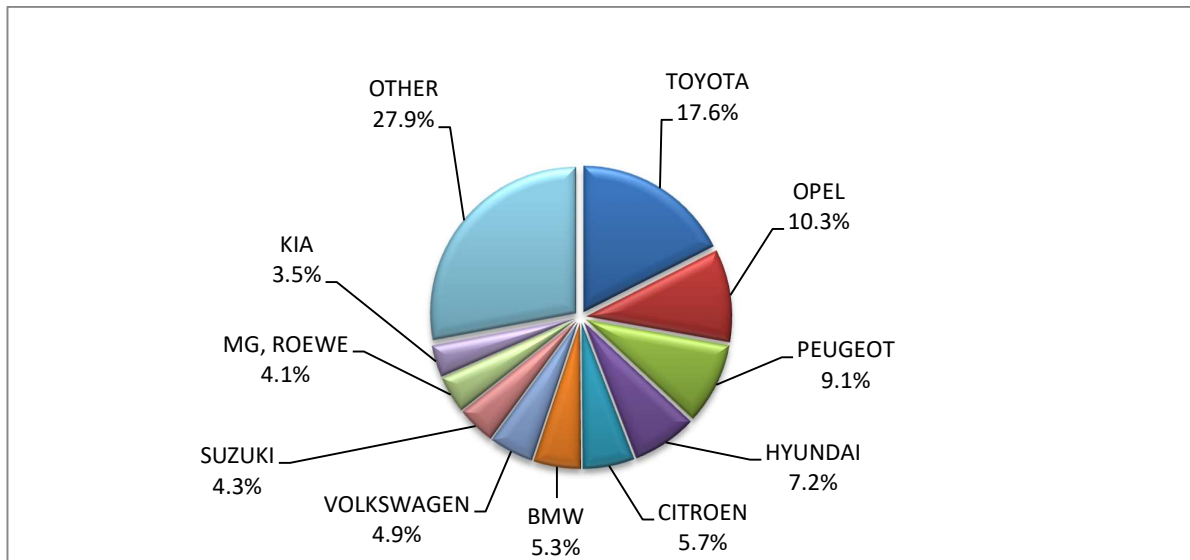


Table 4
Sales of new and used lorries by make: January 2025

| Make | Lorries | |
|------------------------------|---------|------|
| | January | |
| | new | used |
| ADDAX MOTORS, ISEKI, STAMA | 2 | - |
| BYD | 2 | - |
| CITROEN | 39 | 60 |
| DACIA | - | 12 |
| DACIA ¹ | 4 | - |
| DAF | 1 | 42 |
| DAF ¹ | 4 | - |
| DANGEL | - | 1 |
| FIAT | 68 | 123 |
| FIAT-IVECO | - | 4 |
| FORD | 195 | 353 |
| FOTON | 3 | - |
| FUSO | - | 2 |
| ISUZU | 32 | 26 |
| IVECO | 4 | 39 |
| IVECO ¹ | 6 | - |
| JEEP | - | 2 |
| KIA | - | 1 |
| MAN | 11 | 121 |
| MAXUS, LDV | 10 | 1 |
| MERCEDES | 20 | 471 |
| MERCEDES ¹ | 6 | - |
| MERCEDES ² | 2 | - |
| MINI | - | 30 |
| MITSUBISHI | - | 30 |
| MITSUBISHI ¹ | - | 1 |
| MITSUBISHI ² | - | 1 |
| MITSUBISHI FUSO | - | 3 |
| MITSUBISHI FUSO ¹ | 4 | - |
| NISSAN | 2 | 62 |
| OPEL | 115 | 70 |
| PEUGEOT | 88 | 55 |
| PIAGGIO | 1 | 4 |
| PIAGGIO ¹ | 1 | - |
| RENAULT | 8 | 145 |
| SCANIA | 23 | 60 |
| SKODA | - | 2 |
| SMYRLIADIS | - | 1 |
| SSANGYONG, KG MOBILITY | 7 | - |
| STEYER | - | 1 |
| TOYOTA | 56 | 63 |
| VICTORY | 3 | - |
| VOLKSWAGEN | 45 | 80 |

Table 4 (cont)
Sales of new and used lorries by make: January 2025

| Make | Lorries | |
|--------------|------------|--------------|
| | January | |
| | new | used |
| VOLVO | 6 | 113 |
| TOTAL | 768 | 1,949 |

- 1 : With 2nd/3rd stage manufacturer in Greece.
- 2 : With 2nd/3rd stage manufacturer abroad.

Graph 7. Sales of new lorries by make (January 2025)

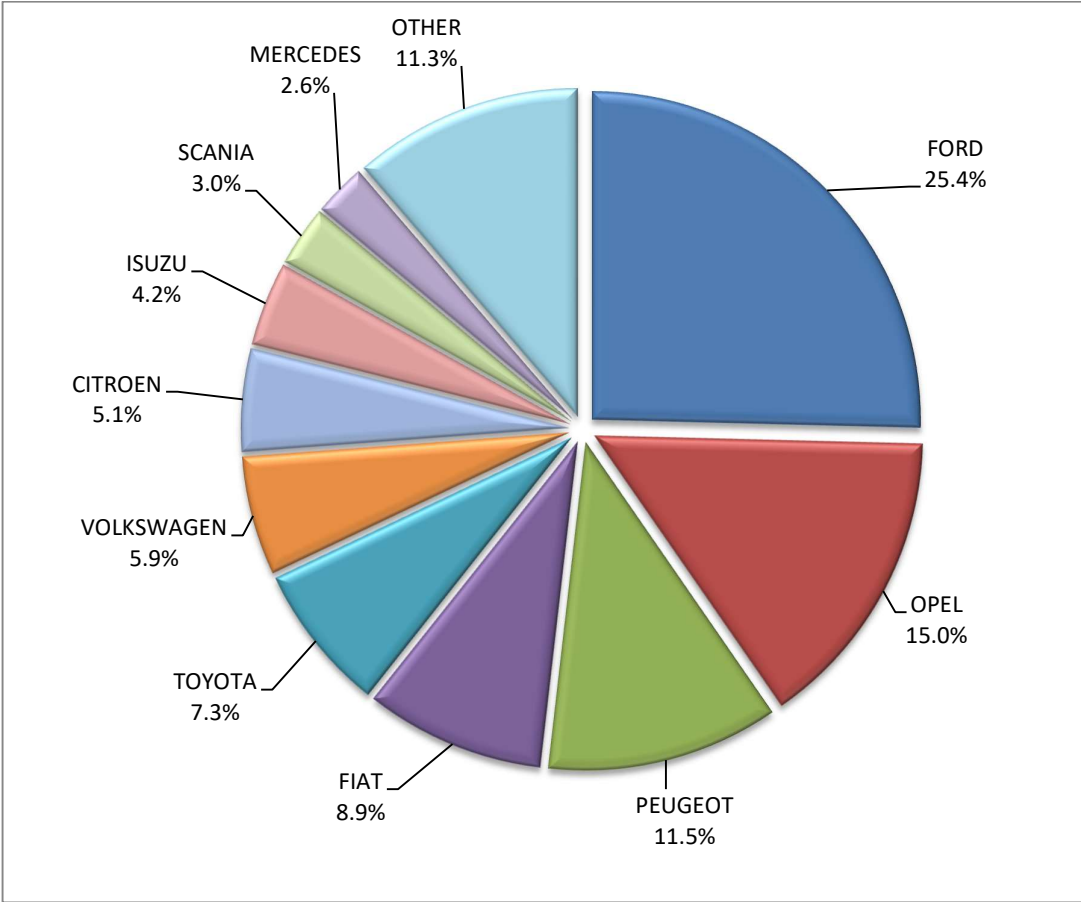


Table 5
Sales of new and used buses by make: January 2025

| Make | Buses | |
|---|------------|-----------|
| | January | |
| | new | used |
| BOVA | - | 5 |
| ERDUMAN | 1 | - |
| FORD | 1 | 2 |
| HIGER | - | 1 |
| IRISBUS | - | 1 |
| IRIZAR | - | 1 |
| ISUZU, ANADOLU ISUZU, TURKUAZ, TURQUOISE, AIOS, AOS, GLOBUS | 2 | - |
| ISUZU, AOS, GLOBUS, AIOS | 2 | - |
| IVECO | 1 | - |
| MAN | 3 | - |
| MAN/NEOPLAN | 3 | - |
| MERCEDES | 2 | 50 |
| MERCEDES ¹ | 16 | - |
| MERCEDES ² | 2 | 4 |
| MERCUS | - | 1 |
| NEOPLAN | - | 1 |
| OTOKAR | - | 1 |
| SETRA | - | 6 |
| TEMSA | - | 1 |
| WISEON | - | 1 |
| YUTONG | 100 | - |
| TOTAL | 133 | 75 |

1 : With 2nd/3rd stage manufacturer in Greece.

2 : With 2nd/3rd stage manufacturer abroad.

Table 6
Sales of new and used motorcycles by make or manufacturer: January 2025

| Make | Motorcycles | |
|---|-------------|------|
| | January | |
| | new | used |
| APRILIA | 27 | 5 |
| ARMONY, ARORA, BUKE, BULL MOTORS | 1 | - |
| ASUS, YUKI, RATO, DOCKER, MIGLIORI, VICTORY, AVETA | 10 | - |
| BAJAJ | 4 | - |
| BASHAN, AMGroup, AMGroup Bike, DON, IRBIS, WORKER BEAR, Nomik ATV 2 | 1 | - |
| BAW, NIEVE, RELIVE, ALLVIEW, Yunlong Motors | 1 | - |
| BENELLI | 18 | - |
| BENZHO | - | 1 |
| BETA | 10 | - |
| BLUESHARK | 2 | - |
| BMW | 87 | 46 |
| BRIXTON | 5 | - |
| CFMOTO | 155 | 1 |
| CFMOTO, KEEWAY | 1 | - |
| CFMOTO, ZEEHO | 2 | - |
| DAELIM | - | 1 |
| DAYANG, DAYTONA MOTORS, NIPPONIA, DYMOTO, VEEROAD, EVO MOTORS, MH MOTORCYCLES, FKM, FKMOTORS | 3 | - |
| DAYANG, DAYTONA MOTORS, NIPPONIA, KUBA, VEEROAD, SUMCO, CETUR, RUTEC | 19 | - |
| DAYANG, DAYTONA MOTORS, NIPPONIA, VEEROAD | 3 | - |
| DAYANG, DAYTONA MOTORS, NIPPONIA, VEEROAD, DOCKER | 14 | - |
| DAYANG, DAYTONA MOTORS, NIPPONIA, VEEROAD, DOCKER, RKS, LUOJIA | 4 | - |
| DAYANG, DAYTONA MOTORS, NIPPONIA, VEEROAD, RUTEC, CETUR | 45 | - |
| DAYANG, DAYTONA MOTORS, NIPPONIA, VEEROAD, RUTEC, CETUR, SALCANO, LUOJIA, GA CE LA, HIGHLAND, NORTH | 48 | - |
| DAYANG, DYMOTO, DAYTONA MOTORS, NIPPONIA, MH MOTORCYCLES, ORCAL, SUMCO, KUBA, RKS, RUTEC | 4 | - |
| DAYANG, DYMOTO, DAYTONA MOTORS, NIPPONIA, MH MOTORCYCLES, ORCAL, SUMCO, KUBA, RKS, RUTEC, AJS | 6 | - |
| DAYANG, ECOCREMO, ECOOTER, ECOOTOR, AGM, ORCAL, SUMCO | 1 | - |
| DAYTONA | - | 1 |
| DAYTONA MOTORS, DAYANG, DYMOTO, NIPPONIA, MH MOTORCYCLES, ORCAL, SUMCO, RUTEC, AJS | 1 | - |
| DAYTONA MOTORS, DAYANG, NIPPONIA, DYMOTO, DOCKER, VEEROAD, EVO MOTORS, SUMCO, CETUR, HANSOM, RUTEC | 1 | - |
| DAYTONA MOTORS, EVO MOTORS, LONGJIA, ORCAL, NECO, VGA, ROMET MOTORS, DRAX, MONDIAL, JUNAK, ONLINE | 5 | - |
| DOFERN, FRISON SCOOTER, SCOOTEC, PASSION, ELEKTRA EV, CJR | 2 | - |
| DUCATI | 9 | 8 |
| EFUN, ZAP | 1 | - |
| EFUN, ZAP, FRISON, EASY-WATTS | 2 | - |
| FD MOTORS, FASPIDER, DAYTONA MOTORS, NIPPONIA, QUANTYA | 1 | - |
| FENGCHENG, FULLCHEER, Barman-pakro, NITSURO, VOLDORK, SPIMRI, Elektra EV, EKOe, BITMART | 1 | - |
| GPX | 2 | - |
| GUSITE, RKS, KUBA, KOKO, KAVIR, BECANE, EVO MOTORS, Daytona MOTORS, SUMCO, SKYJET | 4 | - |
| HAOJIN, LETBE, KUBA, RKS, SKYJET | 4 | - |
| HARLEY DAVIDSON | 1 | 17 |
| HONDA | 857 | 50 |
| HORWIN | 3 | - |
| HUSQVARNA | 8 | 3 |
| INDIAN MOTORCYCLE | 5 | 2 |
| JCADI, TILGREEN, Grupo Invicta MOTOR, e-broh, FAURO | 1 | - |

Table 6 (cont)
Sales of new and used motorcycles by make or manufacturer: January 2025

| Make | Motorcycles | |
|--|-------------|------|
| | January | |
| | new | used |
| JIAYUAN | 5 | - |
| JNEN, JUNENG, ZIPP, MOTORAN, HORS | 1 | - |
| JNEN, JUNENG, ZIPP, MOTORAN, HORS, FLEX TECH, RAZZO, TOROS, ONE, JUNAK | 5 | - |
| JNEN, JUNENG, ZIPP, MOTORAN, ONE, RAZZO, FLEX TECH, TOROS, JUNAK, TURBHO, PEZAL, ALPHA-MOBIL | 15 | - |
| KAWASAKI | 17 | 13 |
| KAYO, MONDIAL, DAYTONA MOTORS | 10 | - |
| KEEWAY | 1 | - |
| KEEWAY, JINLANG, ARIIC, ARORA, KL | 3 | - |
| KEEWAY, KUBA | 2 | - |
| KEEWAY, LONGJIA | 2 | - |
| KSR MOTO AUSTRIA, MOTRON MOTORRAD | 4 | - |
| KTM | 21 | 20 |
| KUBA, RKS, SKYJET, LETBE | 3 | - |
| KYMCO | 65 | 15 |
| LAMBRETTA | 1 | - |
| LETBE, RKS | 1 | - |
| LEXMOTO, ROMET, NECO, LUXXON, PRIKE | 8 | - |
| LEXMOTO, ROMET, NECO, LUXXON, PRIKE, MAXON | 2 | - |
| LIFAN, HONLEI, QIPAI, SKYGO, GTS, PINK, DAYTONA MOTORS | 1 | - |
| LIFAN, QIPAI, SKYGO, TAKTAS | 14 | - |
| LOJO, RAINWOLL | 3 | - |
| LONCIN, KINLON, LONGTING, KUBA, YUKI, MONDIAL, STMAX, KANUNI, MOTORAN, ASYA, QUSWA, PUMAREX, RALLY USA, MOD, CCM | 7 | - |
| LONCIN, KUBA, RKS, ITALIKA, VOGÉ, SUNRACE, SKY, MALAGUTI, ROCKET, SUPERBIKE, NOVELBAT, TRIDIAMOND | 5 | - |
| LONCIN, VOGÉ | 8 | - |
| LONCIN, VOGÉ, VOGÉPRO | 1 | - |
| LONGJIA, ORCAL, NECO, ALFASCOOTERS, VGA, ROMET MOTORS, BARTON MOTORS, OVER, CAROLYN, KANUNI, BTC | 6 | - |
| LONGJIA, ORCAL, NECO, VGA, ROMET MOTORS, DRAX, MONDIAL, JUNAK, ONLINE, MOTOWELL, JORDON, GABELLI | 2 | - |
| LONGJIA, ORCAL, NECO, VGA, ROMET MOTORS | 5 | - |
| LONGJIA, VICTORIA, VICTORIA MOTORRAD, ORCAL, NECO, VGA, BTC, ALFASCOOTERS, ROMET MOTORS | 8 | - |
| LONGJIA, Zündapp, VGA, NECO, BTC, AGM, ALFASCOOTERS, ROMET MOTORS, Kudaki, BARTON MOTORS, OVER BIKES | 5 | - |
| LONGJIA, ZUNDAPP, VGA, NECO, BTC, ALFASCOOTERS, ROMET MOTORS | 1 | - |
| MACBOR, RVM, COLOVE, DAYTONA MOTORS, ZF-KY, KOVE | 6 | - |
| MACBOR, RVM, COLOVE, DAYTONA MOTORS, ZF-KY, online, KOVE | 10 | - |
| MALAGUTI | 17 | - |
| MBP, Morbidelli, KEEWAY, KUBA, RKS | 3 | - |
| MGK HM | 47 | - |
| MORBIDELLI, MBP, KEEWAY, RKS | 3 | - |
| MORBIDELLI, MBP, KEEWAY, KUBA, RKS | 1 | - |
| MOTO GUZZI | 9 | - |
| MOTO MORINI | 1 | - |
| MOTRON MOTORRAD, ZONGSHEN | 1 | - |
| NIU, NUUV | 1 | - |
| OPAI | 1 | - |

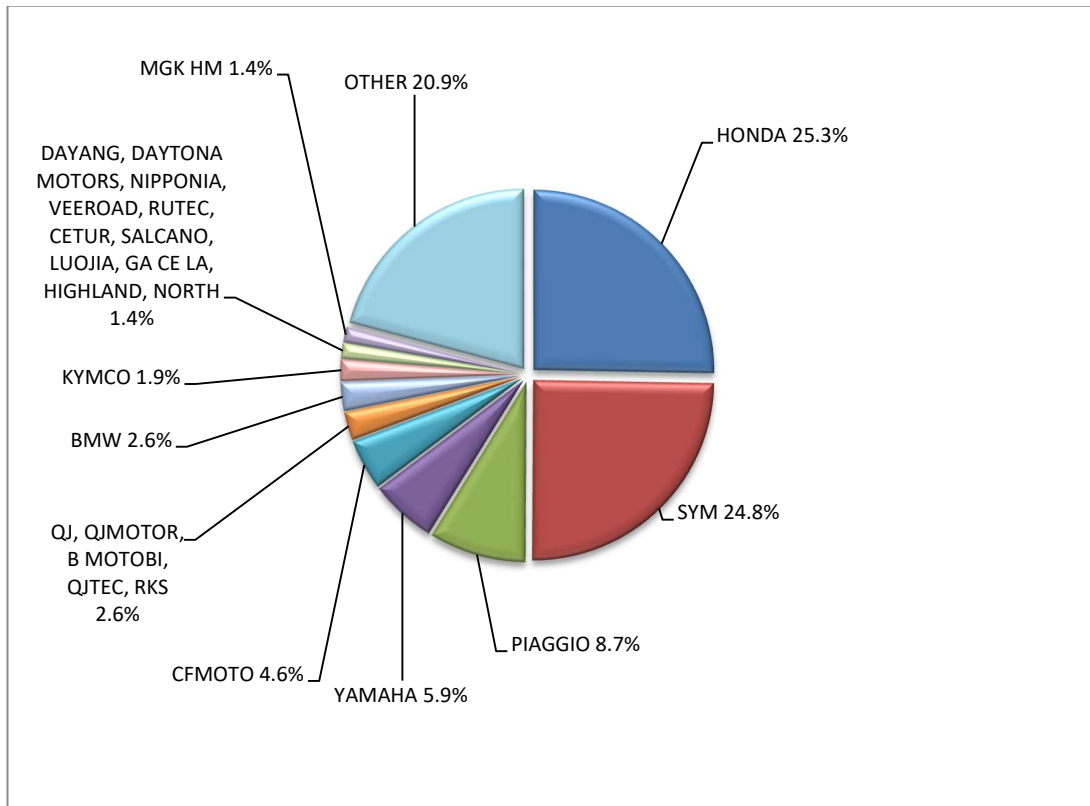
Table 6 (cont)
Sales of new and used motorcycles by make or manufacturer: January 2025

| Make | Motorcycles | |
|---|-------------|------|
| | January | |
| | new | used |
| ORCAL, SOMOTO, AJS, SENKE, HERALD, ITALJET, WACCO, MOTOBİ, CLEVELAND CYCLEWERKS ACE, MERCURY, SAXXX, SFM | 2 | - |
| PEUGEOT | 7 | - |
| PIAGGIO | 295 | 18 |
| PONY, BAW 1, BAW 2, BAW 3, N1, N2, Allview | 1 | - |
| QJ, QJIANG, QJMOTOR, B MOTOBİ | 11 | - |
| QJ, QJIANG, QJMOTOR, B MOTOBİ, QJTEC | 22 | - |
| QJ, QJIANG, QJMOTOR, B MOTOBİ, QJTEC, LIFAN, GTS, DAYTONA MOTORS, SIMONINI MOTO, PINK | 4 | - |
| QJ, QJIANG, QJMOTOR, B MOTOBİ, QJTEC, LIFAN, GTS, DAYTONA MOTORS, SIMONINI MOTO, PINK, RKS | 23 | - |
| QJ, QJMOTOR, B MOTOBİ, QJTEC, RKS | 87 | - |
| RAY ELECTRIC MOTORS | 1 | - |
| RIEJU, DRAC | 1 | - |
| RIYA, RYMOTO, KUBA, RKS, LEXMOTO, MITT, ALPHA MOTORS, IMF, ROMET, ZIPP, ARORA, ZORRO, MOJITO | 5 | - |
| ROYAL ENFIELD | 18 | - |
| SAKURA, GOLDEN LION, ARTISAN, Fauro, ETALIAN, Viverra, Varaneo, Kito | 1 | - |
| SHERCO | - | 3 |
| SILENCE, SCUTUM, ETRIX | 3 | - |
| SKYTEAM, SACIN, CSR, METALCO, SOKUDO, BAZUKA, MINICO, MOTOSBASI, MOTOS BORDOY, SUMKO, ROXON, MONKEY BIKES | 2 | - |
| SUZUKI | 24 | 12 |
| SYM | 841 | 11 |
| TAIZHOU ZHONGNENG | - | 1 |
| TARO, JUNAK, BARTON MOTORS ,ORCAL, Lexmoto | 1 | - |
| TARO, TRMOTOR, CHUANL, JUNAK, BARTON MOTORS, ORCAL, Lexmoto, MITT, NECO, WOTTAN, MAXON, MAX-ON, MOTOBİ | 1 | - |
| TARO, TRMOTOR, CHUANL, JUNAK, Lexmoto, BARTON MOTORS, MITT, NECO, MAXON, WOTTAN MOTOR, MAX-ON, MOTOBİ, MOTO B | 7 | - |
| TAYO, HAOJIANG, ZHONGYU, THUMP, THUMPSTAR, KIDEN, ZONTES, Junak | 1 | - |
| TAYO, HAOJIANG, ZHONGYU, THUMP, THUMPSTAR, KIDEN, ZONTES, Junak, SENKE | 4 | - |
| TAYO, ZONTES, KIDEN, Haojiang, ZHONGYU, Sharpon, TANNY, TYAN, Senke, B BETA, Daytona Motors | 28 | - |
| TEYIN, TIANYING, XINBEN, SANBEN, ALFASCOOTERS, Alpha Motors, APACHI | 5 | - |
| TIANYING, RIYA, HONGYUNDA, TYM, HONLING, SANBEN, XINBEN, TAMCO, ALISON, DMK MOTORS | 2 | 1 |
| TIANYING, RIYA, HONGYUNDA, TYM, HONLING, TAMCO, ALISON, DMK MOTORS, WLIE, LEEWAY, WLXQ, APGmoto | 2 | - |
| TIANYING, RIYA, HONGYUNDA, TYM, SANBEN, XINBEN, TAMCO, ALISON, DMK MOTORS, WLIE, LEEWAY, WLXQ | 2 | - |
| TIANYING, RIYA, SANBEN, TEYIN, TYM, Alfascoters, JORDON, YUKI, YAMASAKI, IVA, SENZO, KillerBee | 1 | - |
| TINBOT, KOLLTER, MASAI, MS ENERGY | 1 | - |
| TRIUMPH | 22 | 5 |
| TRIUNI, TRIGOBIKE, LUCKING-MOPED, CSE-EV, JSE-MOTO, RETELLI, BIKEMITE, MOBI-E, U-MOB, VELCAMOTOR, DUKKA, LUYING | 1 | - |
| UM | 6 | - |
| VELIMOTOR, VOLTAMP, ALTUX, KKL HITECH, WHEELN WATER TECH, ALTUS, NUVEAU MONDE, EN MOTO, YUBEE MOTORS, KKL | 1 | - |
| VMOTO | 2 | - |
| VOGE, LONCIN, VOGEPRO | 10 | - |
| WANGYE, SANBEN, UM, KENOS, SUPERBYKE, MDC, MISTRAL | 2 | - |
| WONJAN, THRUST MOTOR, WMOTO, KEEWAY, TD | 12 | - |
| XEV, X, XEV YOYO | 4 | - |

Table 6 (cont)
Sales of new and used motorcycles by make or manufacturer: January 2025

| Make | Motorcycles | |
|---|--------------|------------|
| | January | |
| | new | used |
| YAMAHA | 201 | 58 |
| YAMAHA, MBK | - | 2 |
| YINXIANG, KENBO, VENOM, CHEETA, ZIPP, NEMO, FEKON, ANATOLIA, CANBO | 4 | - |
| ZHIDOU , ZD, RKS | 2 | - |
| ZHONGNENG, ZNEN, AGM, BTC, CLS, COLIBRI, DAYTONA MOTORS, DERRACE, DOCKER, JM MOTORS, KUBA, La souris, LEXMOTO | 1 | - |
| ZHONGNENG, ZNEN, AGM, BTC, COLIBRI, DAYTONA MOTORS, DERRACE, DOCKER, JM MOTORS, KUBA, La Souris | 3 | - |
| ZHONGNENG, ZNEN, AGM, BTC, COLIBRI, DAYTONA MOTORS, DERRACE, DOCKER, JM MOTORS, KUBA, La Souris, LEXMOTO | 2 | - |
| ZHONGNENG, ZNEN, AGM, YUKI, COLIBRI, LEXMOTO, MINIMOTO, NECO, ROMET MOTORS | 1 | - |
| ZXMCO, NIJ, DAYTONA MOTORS, PINK | 2 | - |
| TOTAL | 3,390 | 294 |

Graph 8. Sales of new motorcycles (January 2025)



EXPLANATORY NOTES

| | |
|---|--|
| Survey on the issuing of new road motor vehicle circulation licenses | The survey on the issuing of new motor vehicle circulation licenses is a census survey. The released data give information, at country level, on the brand and type of the motor vehicle, as well as whether it is new or used. The survey does not include vehicles that move on rails, trolley busses, agricultural tractors and machinery. In addition, the following are excluded: all motor vehicles of the Armed Forces, Police, Fire Brigade, State Services, Diplomatic Corps, Foreign Missions, and Invalids of Wars, as well as motorcycles with a cylinder capacity less than 50 cc. |
| Legal basis | Law 3832/2010 |
| Reference Period | January 2025 |
| Coverage | The production of monthly data is based on the registers held by the Ministry of Infrastructure, Transport and Networks, which records all the monthly changes observed in the vehicle registration licenses at country level. |
| Definitions | <p>Road motor vehicle is any vehicle that, irrespective of the number of wheels, is moved by an engine and is designed to transport persons or cargo or both of them, either they are on the same single vehicle or on a trailer carried by the main motor vehicle.</p> <p>New road motor vehicle is any motor vehicle that is registered for the first time in Greece during the reference month and has not been put into circulation in any other country.</p> <p>Used motor vehicle is any motor vehicle that is registered for the first time in Greece and has been imported as a used one from abroad</p> <p>Passenger motor vehicle: it is a motor vehicle designed to carry mostly people, having no more than 9 seats, including the driver's seat.</p> <p>Bus: it is a motor vehicle, which is designed to carry mostly people, having more than 10 seats, including the driver's seat. In the corresponding tables of this announcement, this category also includes articulated buses.</p> <p>Lorry: it is motor vehicle designed to carry mostly cargo. In the corresponding tables of this announcement, this category also includes tractors, tow trucks, articulated tractors, and trucks with trailers.</p> <p>Motorcycle: any two-wheeled motor vehicle, with or without sidecar, with maximum authorized design speed over 45 km/h, or in case it is powered by a combustion engine, with a cylinder capacity of 50 cc or over. In the corresponding tables of this announcement, this category also includes the three-wheeled motor vehicles – motor tricycles.</p> <p>Tricycle motor vehicle: it is a motor vehicle with three symmetrical wheels with maximum authorized design speed over 45 km/h, or in case it is powered by a combustion engine, with a cylinder capacity over the 50 cc. This category also includes four-wheel vehicles, except the light four-wheel motorcycles, whose empty vehicle tare (excluding the weight of the fuel or mixture of fuel-oil or the weight of the batteries for electric cars) is up to 400 kg in the case the vehicle is designed for passenger use or up to 550 kg in case the vehicle is designed to carry cargo and whose engine is up to 15KW.</p> |
| Methodology | Exhaustive Survey. The primary data derive from the Ministry of Infrastructure, Transport and Networks and are based on the issuing of new circulation licenses as they are registered by the Regional Offices for Transport and Communications. |
| References | More information (graphs, tables) concerning the survey on the issuing of new motor vehicle circulation licenses are available on the webpage of ELSTAT, www.statistics.gr , under the link http://www.statistics.gr/en/statistics/-/publication/SME24/ |