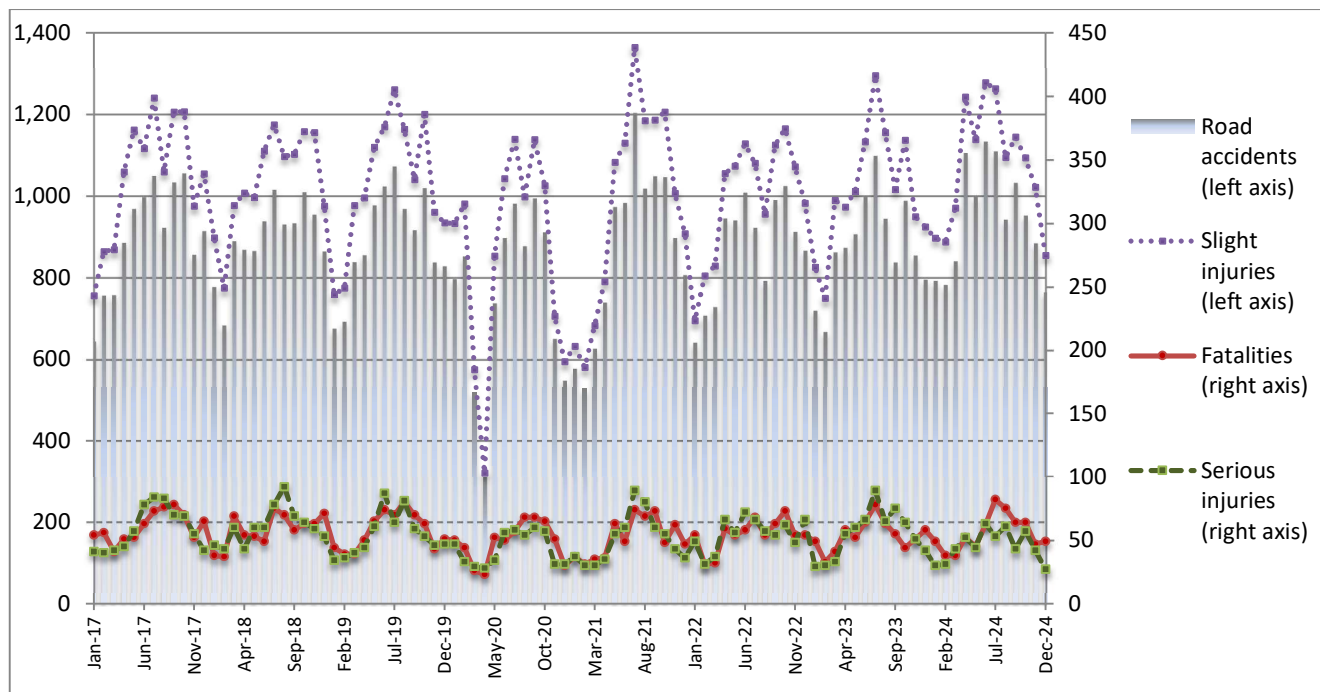


## ROAD TRAFFIC ACCIDENTS: December 2024

The Hellenic Statistical Authority (ELSTAT) announces provisional<sup>1</sup> data from the survey on “Road Traffic Accidents” for December 2024. In particular, the road traffic accidents which occurred in Greece, resulting in death or injury, decreased by 3.9% in comparison with the corresponding month of 2023 (765 road accidents in December 2024, against 796 road accidents in December 2023).

The casualties of the injury-causing accidents that occurred in December 2024 were as follows: 49 deaths, 27 serious injuries and 854 slight injuries. In contrast, in December 2023 the corresponding figures were: 58 deaths, 42 serious injuries and 924 slight injuries. Therefore, road traffic accident casualties in December 2024 decreased by 15.5% for deaths, by 35.7% for serious injuries and by 7.6% for slight injuries.

**Graph 1: Road traffic accidents and casualties,  
January 2017 - December 2024**



Provisional data for the period January 2024 – December 2024

**Information on methodological issues:**

Sectoral Statistics Division  
Transport Statistics Section  
M. Kloumpas  
Tel: +30 213 135 3095  
e-mail: [m.kloumpas@statistics.gr](mailto:m.kloumpas@statistics.gr)

**Information for data provision:**

Tel: +30 213 135 2022, 2308, 2310  
e-mail: [data.dissem@statistics.gr](mailto:data.dissem@statistics.gr)

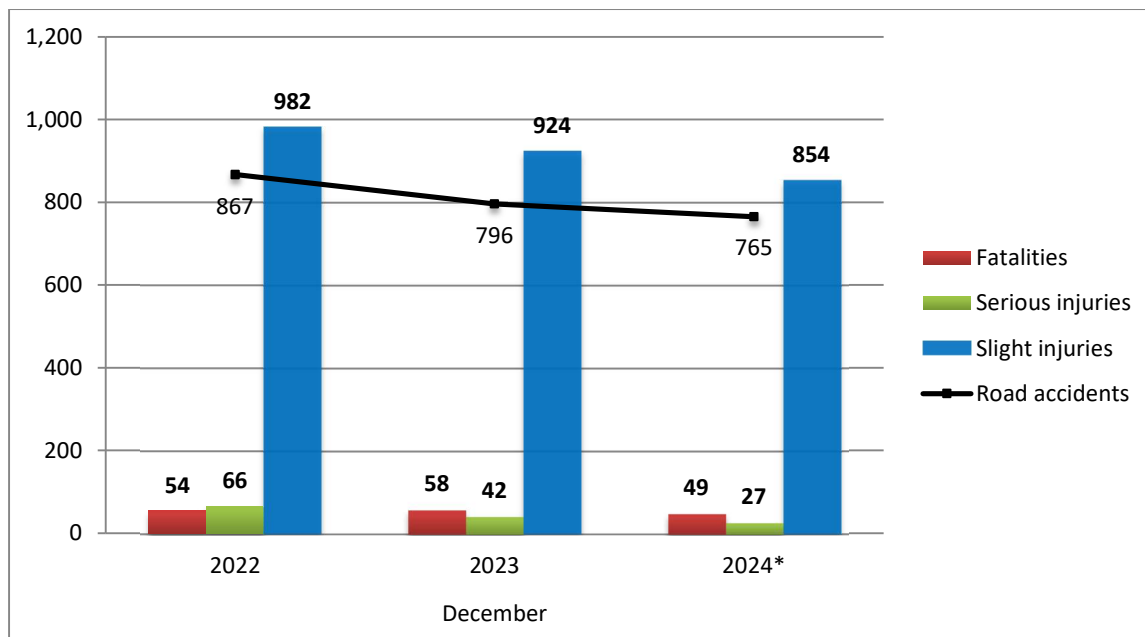
<sup>[1]</sup> Data for the reference year is provisional until the finalization of the annual data, which takes place 12 months after the end of the reference year and is published in the corresponding announcement of the following year. During these 12 months the provisional data is updated on the basis of the data of the Road Accident Forms of that year which is transmitted to ELSTAT by Police Authorities (see explanatory notes).

**Table 1: Road traffic accidents and casualties, December 2022 - 2024\***

	December				
	2022	2023	2023/2022 (%)	2024*	2024*/2023 (%)
<b>Road accidents</b>	<b>867</b>	<b>796</b>	<b>-8.2</b>	<b>765</b>	<b>-3.9</b>
<b>Fatalities</b>	<b>54</b>	<b>58</b>	<b>7.4</b>	<b>49</b>	<b>-15.5</b>
<b>Total injuries</b>	<b>1,048</b>	<b>966</b>	<b>-7.8</b>	<b>881</b>	<b>-8.8</b>
Serious injuries	66	42	-36.4	27	-35.7
Slight injuries	982	924	-5.9	854	-7.6

\* Provisional data

**Graph 2: Road traffic accidents and casualties, December 2022 - 2024\***



\* Provisional data

**Table 2: Road traffic accidents and casualties, by region and department, December 2023 and 2024\***

Region and department	Road accidents			Fatalities			Serious injuries			Slight injuries		
	2023	2024*	%	2023	2024*	%	2023	2024*	%	2023	2024*	%
<b>Greece Total</b>	<b>796</b>	<b>765</b>	<b>-3.9</b>	<b>58</b>	<b>49</b>	<b>-15.5</b>	<b>42</b>	<b>27</b>	<b>-35.7</b>	<b>924</b>	<b>854</b>	<b>-7.6</b>
<b>Anatoliki Makedonia and Thraki (East Macedonia and Thrace)</b>	<b>33</b>	<b>16</b>	<b>-51.5</b>	<b>7</b>	<b>7</b>	<b>0.0</b>	<b>1</b>	<b>1</b>	<b>0.0</b>	<b>43</b>	<b>17</b>	<b>-60.5</b>
Drama	2	1	-50.0	2	0		0	0		2	2	
Evros	15	5	-66.7	1	2		0	0		21	4	
Kavala	7	3	-57.1	2	0		0	1		10	2	
Xanthi	5	2	-60.0	1	1		0	0		7	5	
Rodopi	4	5	25.0	1	4		1	0		3	4	
<b>Kentriki Makedonia (Central Macedonia)</b>	<b>171</b>	<b>194</b>	<b>13.5</b>	<b>10</b>	<b>6</b>	<b>-40.0</b>	<b>4</b>	<b>3</b>	<b>-25.0</b>	<b>212</b>	<b>227</b>	<b>7.1</b>
Imathia	3	1	-66.7	2	0		1	0		2	1	
Thessaloniki	148	172	16.2	1	2		1	3		183	205	
Kilkis	6	4	-33.3	1	2		0	0		12	2	
Pella	1	0	-100.0	1	0		0	0		1	0	
Pieria	3	1	-66.7	3	0		2	0		1	1	
Serres	4	4	0.0	2	1		0	0		6	5	
Chalkidiki	6	12	100.0	0	1		0	0		7	13	
<b>Dytiki Makedonia (West Macedonia)</b>	<b>6</b>	<b>3</b>	<b>-50.0</b>	<b>2</b>	<b>3</b>	<b>50.0</b>	<b>3</b>	<b>1</b>	<b>-66.7</b>	<b>6</b>	<b>2</b>	<b>-66.7</b>
Grevena	0	0	-	0	0		0	0		0	0	
Kastoria	1	1	0.0	0	0		1	0		2	1	
Kozani	5	1	-80.0	2	1		2	0		4	1	
Florina	0	1	-	0	2		0	1		0	0	
<b>Ipeiros (Epirus)</b>	<b>10</b>	<b>6</b>	<b>-40.0</b>	<b>3</b>	<b>2</b>	<b>-33.3</b>	<b>1</b>	<b>0</b>	<b>-100.0</b>	<b>18</b>	<b>6</b>	<b>-66.7</b>
Arta	0	4	-	0	1		0	0		0	4	
Thesprotia	1	0	-100.0	0	0		0	0		1	0	
Ioannina	6	1	-83.3	3	0		1	0		9	1	
Preveza	3	1	-66.7	0	1		0	0		8	1	
<b>Thessalia (Thessaly)</b>	<b>21</b>	<b>10</b>	<b>-52.4</b>	<b>5</b>	<b>3</b>	<b>-40.0</b>	<b>1</b>	<b>3</b>	<b>200.0</b>	<b>21</b>	<b>9</b>	<b>-57.1</b>
Karditsa	8	0	-100.0	0	0		1	0		10	0	
Larissa	8	3	-62.5	3	1		0	0		7	5	
Magnissia	4	7	75.0	1	2		0	3		3	4	
Trikala	1	0	-100.0	1	0		0	0		1	0	
<b>Ionian Nisia (Ionian Islands)</b>	<b>7</b>	<b>5</b>	<b>-28.6</b>	<b>1</b>	<b>0</b>	<b>-100.0</b>	<b>1</b>	<b>1</b>	<b>0.0</b>	<b>6</b>	<b>5</b>	<b>-16.7</b>
Zakynthos	2	0	-100.0	0	0		0	0		3	0	
Kerkyra	1	3	200.0	0	0		0	1		1	3	
Kefallinia	3	2	-33.3	1	0		1	0		1	2	
Lefkada	1	0	-100.0	0	0		0	0		1	0	

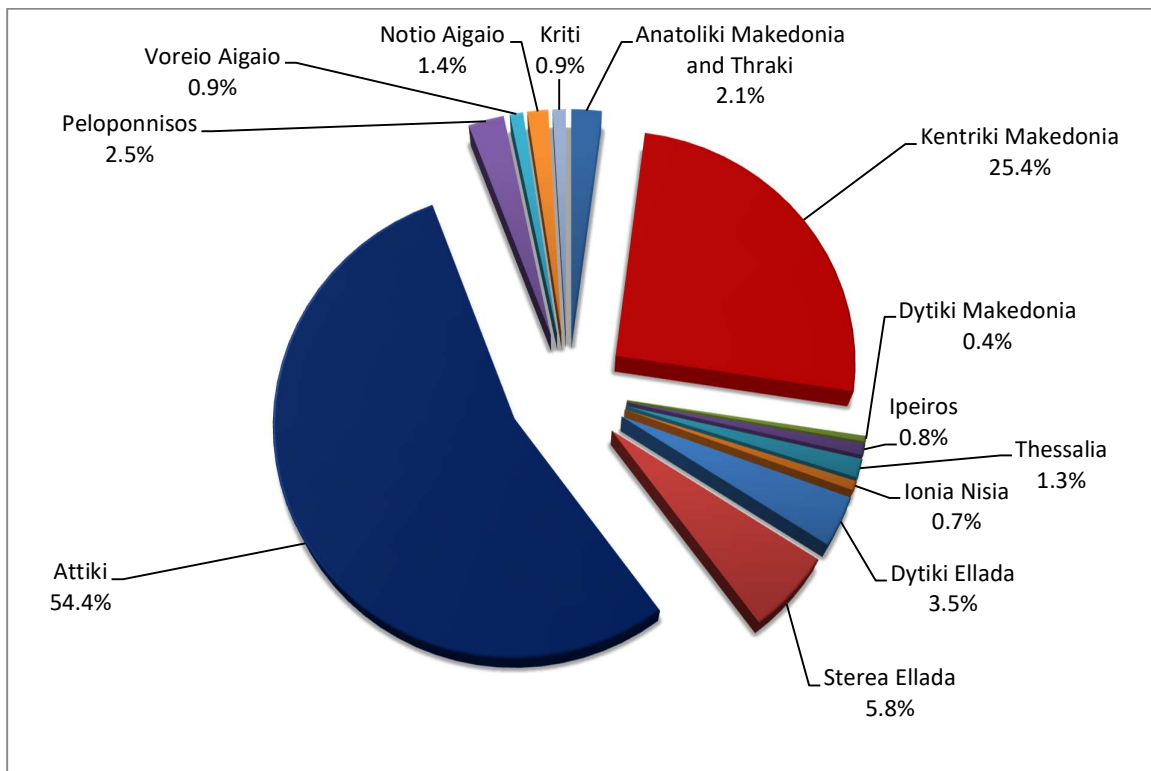
\* Provisional data

**Table 2: Road traffic accidents and casualties, by region and department, December 2023 and 2024\* (Continued)**

Region and department	Road accidents			Fatalities			Serious injuries			Slight injuries		
	2023	2024*	%	2023	2024*	%	2023	2024*	%	2023	2024*	%
<b>Dytiki Ellada (West Greece)</b>	<b>29</b>	<b>27</b>	<b>-6.9</b>	<b>3</b>	<b>3</b>	<b>0.0</b>	<b>1</b>	<b>3</b>	<b>200.0</b>	<b>32</b>	<b>25</b>	<b>-21.9</b>
Etolia & Akarnania	14	13	-7.1	1	2		0	1		15	13	
Achaia	11	9	-18.2	1	1		1	2		14	6	
Ilia	4	5	25.0	1	0		0	0		3	6	
<b>Stereia Ellada</b>	<b>40</b>	<b>44</b>	<b>10.0</b>	<b>1</b>	<b>2</b>	<b>100.0</b>	<b>7</b>	<b>1</b>	<b>-85.7</b>	<b>50</b>	<b>55</b>	<b>10.0</b>
Viotia	12	6	-50.0	1	2		1	0		18	6	
Evia	14	20	42.9	0	0		5	0		16	28	
Evrytania	0	0	-	0	0		0	0		0	0	
Fthiotida	12	16	33.3	0	0		0	1		15	19	
Fokida	2	2	0.0	0	0		1	0		1	2	
<b>Attiki (Attica)</b>	<b>418</b>	<b>416</b>	<b>-0.5</b>	<b>17</b>	<b>13</b>	<b>-23.5</b>	<b>11</b>	<b>9</b>	<b>-18.2</b>	<b>477</b>	<b>459</b>	<b>-3.8</b>
<b>Peloponnisos (Peloponnese)</b>	<b>22</b>	<b>19</b>	<b>-13.6</b>	<b>2</b>	<b>4</b>	<b>100.0</b>	<b>3</b>	<b>3</b>	<b>0.0</b>	<b>22</b>	<b>18</b>	<b>-18.2</b>
Argolida	5	2	-60.0	1	0		1	1		4	3	
Arkadia	2	3	50.0	0	1		0	0		2	3	
Korinthia	8	6	-25.0	0	2		0	0		11	5	
Lakonia	1	0	-100.0	0	0		0	0		1	0	
Messinia	6	8	33.3	1	1		2	2		4	7	
<b>Voreio Aigaio (North Aegean)</b>	<b>10</b>	<b>7</b>	<b>-30.0</b>	<b>1</b>	<b>1</b>	<b>0.0</b>	<b>1</b>	<b>0</b>	<b>-100.0</b>	<b>12</b>	<b>8</b>	<b>-33.3</b>
Lesvos	7	5	-28.6	1	1		1	0		8	4	
Samos	2	2	0.0	0	0		0	0		3	4	
Chios	1	0	-100.0	0	0		0	0		1	0	
<b>Notio Aigaio (South Aegean)</b>	<b>16</b>	<b>11</b>	<b>-31.3</b>	<b>1</b>	<b>2</b>	<b>100.0</b>	<b>5</b>	<b>0</b>	<b>-100.0</b>	<b>15</b>	<b>17</b>	<b>13.3</b>
Dodekanissos	7	8	14.3	1	1		2	0		6	14	
Kyklades	9	3	-66.7	0	1		3	0		9	3	
<b>Kriti (Crete)</b>	<b>13</b>	<b>7</b>	<b>-46.2</b>	<b>5</b>	<b>3</b>	<b>-40.0</b>	<b>3</b>	<b>2</b>	<b>-33.3</b>	<b>10</b>	<b>6</b>	<b>-40.0</b>
Iraklio	3	2	-33.3	3	0		1	0		1	3	
Lassithi	3	1	-66.7	0	1		1	1		2	0	
Rethymno	3	3	0.0	1	2		0	1		3	2	
Chania	4	1	-75.0	1	0		1	0		4	1	

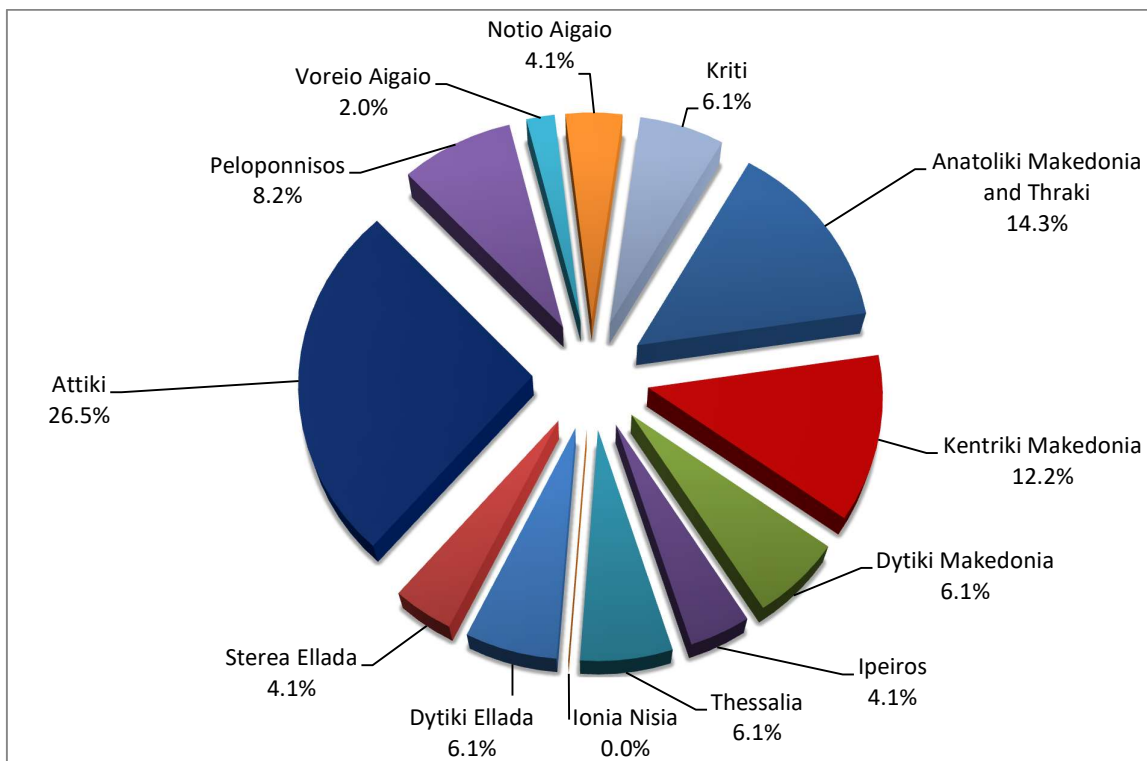
\* Provisional data

**Graph 3: Road traffic accidents by region, December 2024 \***



\* Provisional data

**Graph 4: Fatalities by region, December 2024 \***



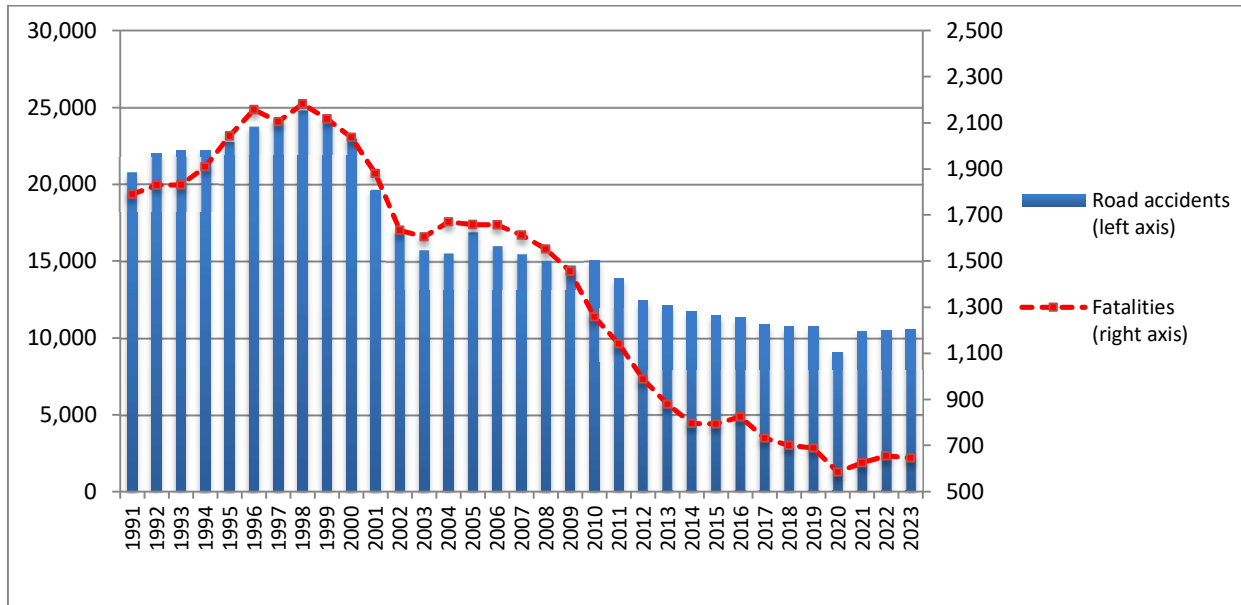
\* Provisional data

**Table 3: Road traffic accidents and casualties for the years 2022, 2023 and 2024\***

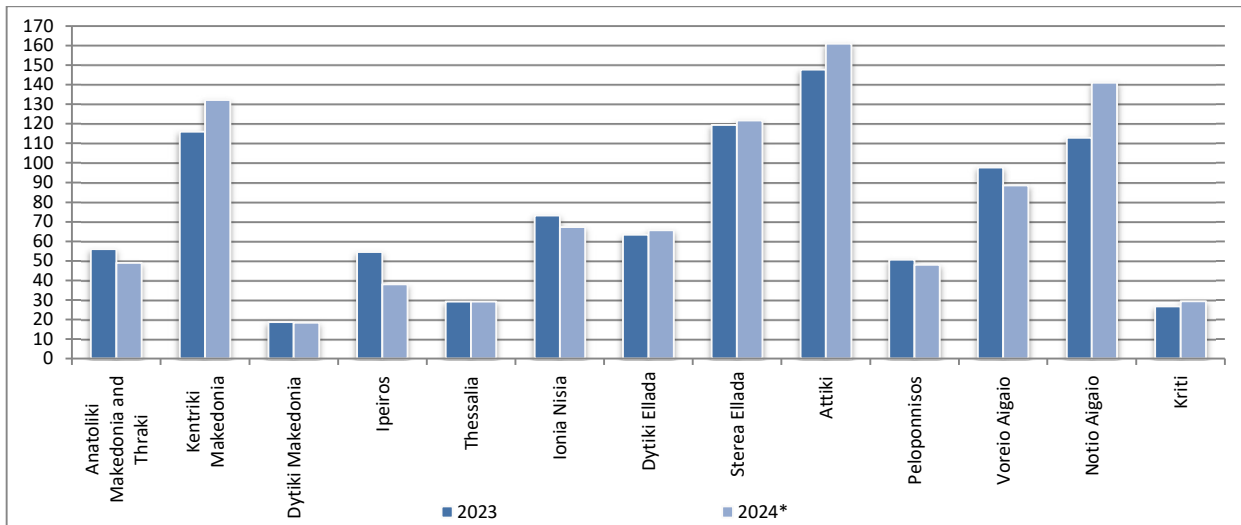
	2022	2023	2024*
	January - December	January - December	January - December
<b>Road Accidents</b>	10,487	10,553	11,346
<b>Annual Change (%) :</b>		0.6	7.5
<b>Fatalities</b>	654	646	665
<b>Annual Change (%) :</b>		-1.2	2.9
<b>Serious injuries</b>	664	659	546
<b>Annual Change (%) :</b>		-0.8	-17.1
<b>Slight injuries</b>	11,961	12,156	12,880
<b>Annual Change (%) :</b>		1.6	6.0

\* Provisional data

**Graph 5: Total road traffic accidents and fatalities, 1991-2023**

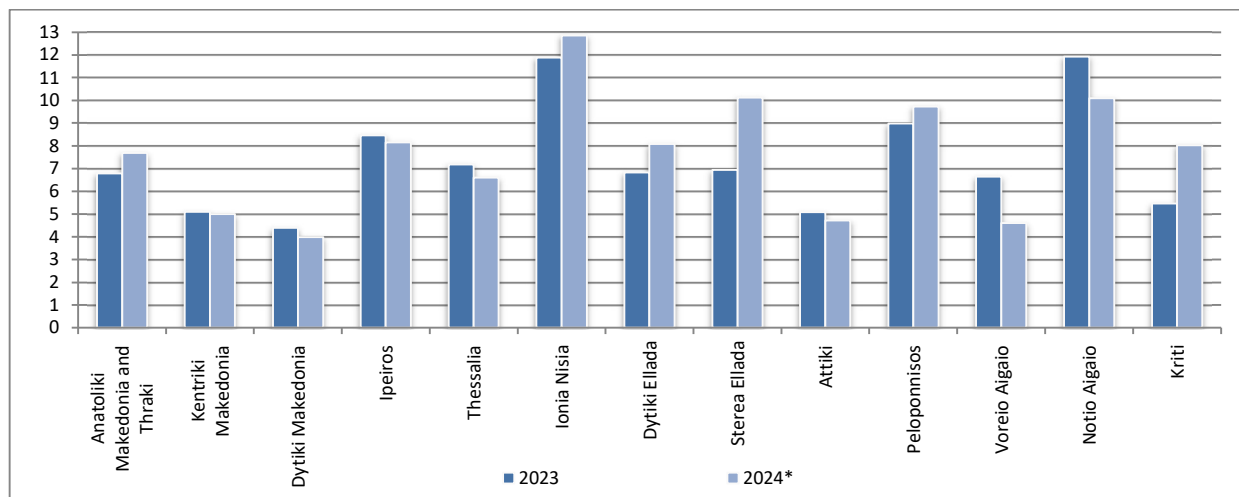


**Graph 6: Road traffic accidents per 100,000 inhabitants for the years 2023 and 2024\***

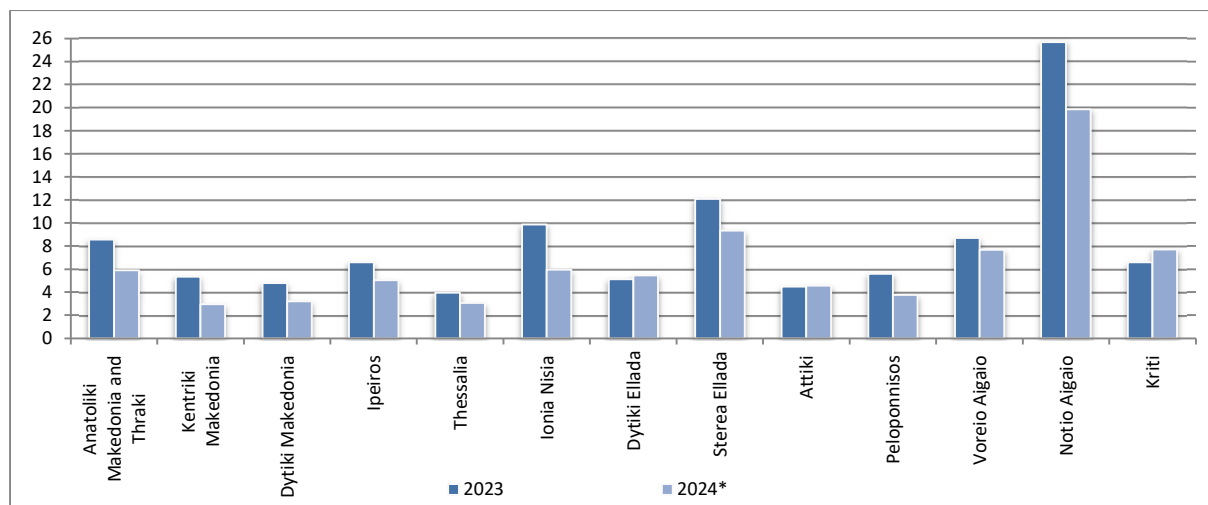


\* Provisional data

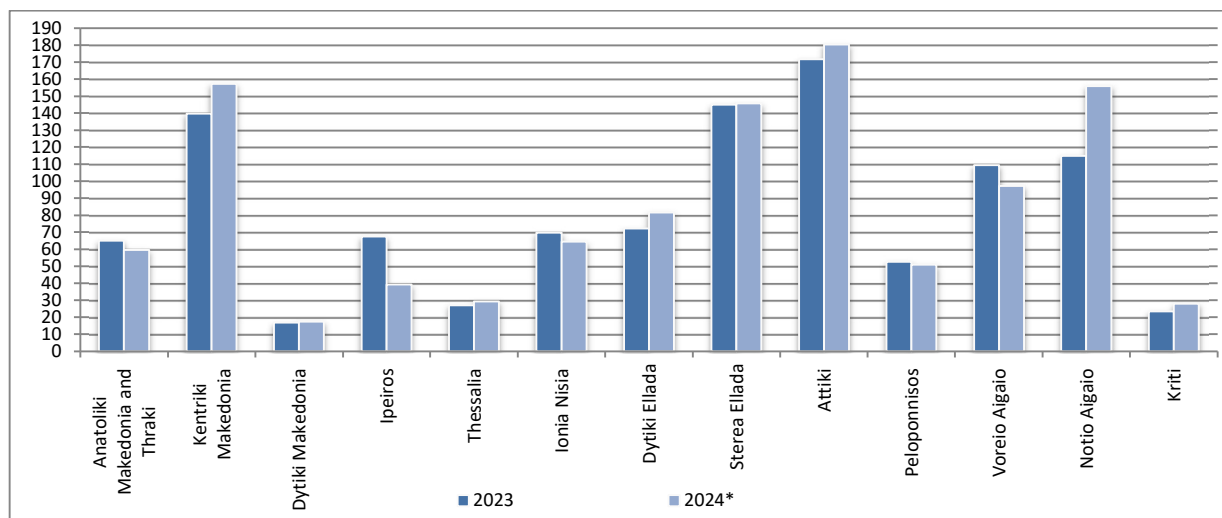
**Graph 7: Fatalities per 100,000 inhabitants for the years 2023 and 2024\***



**Graph 8: Serious injuries per 100,000 inhabitants for the years 2023 and 2024\***



**Graph 9: Slight injuries per 100,000 inhabitants for the years 2023 and 2024\***



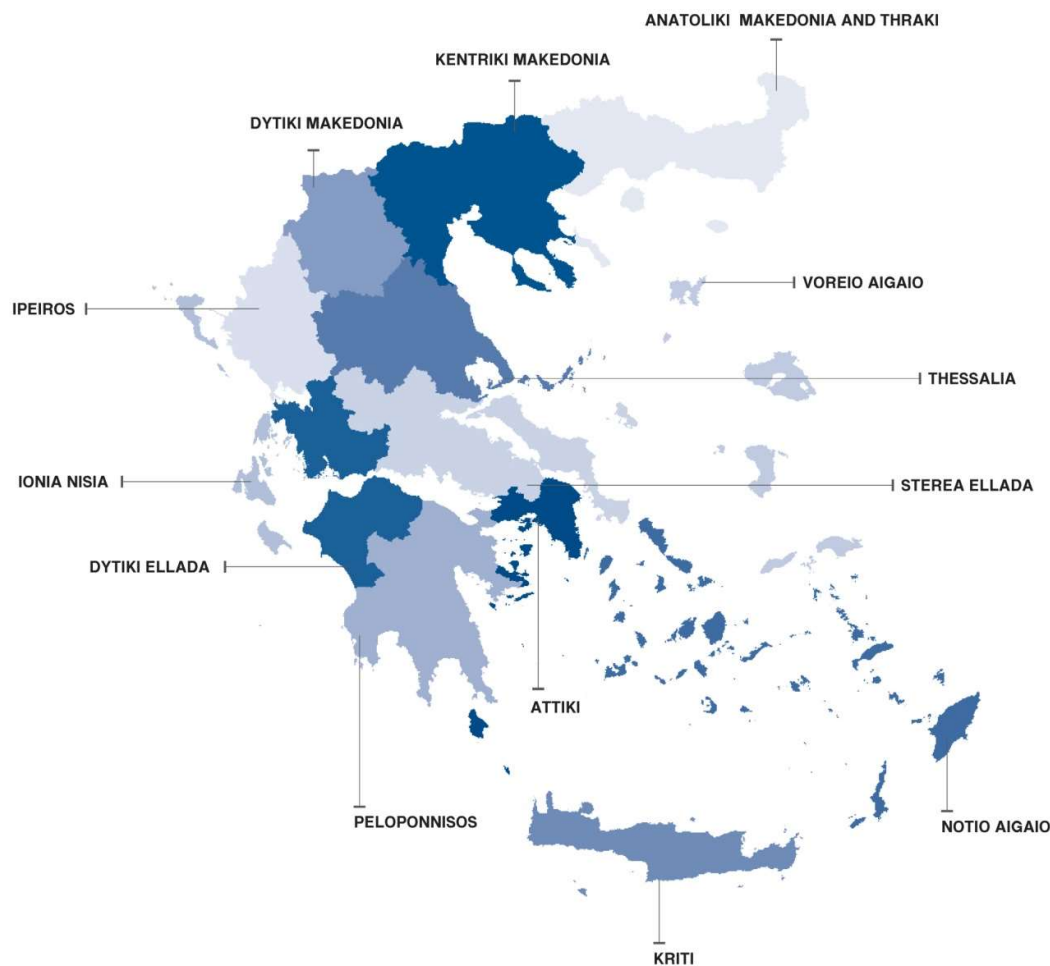
\* Provisional data

## EXPLANATORY NOTES

**Survey on Road Traffic Accidents** The Survey on Road Traffic Accidents is conducted on a monthly basis and it records, for each region (see map) and department of Greece and for each month separately, the number of accidents resulting in death or injury, as well as the number of persons injured by categories (drivers, passengers, pedestrians).

On a yearly basis, road traffic accidents are further analyzed. The competent agencies for filling in/collecting the forms on road accidents are the local Police Authorities and the local Port Authorities of Greece.

The lower level of analysis for the place where an injury road accident occurred is the settlement. Data are collected on a monthly basis. The main variables are the following: place of accident, kind of road, casualties, conditions of road surface and type of road.



**Legal basis** The Survey on Road Traffic Accidents is governed by Council Decision 93/704 of the European Community.

**Reference period** Monthly.

**Availability of data** Provisional data are available 2 months after the reference month.  
Final data are available 12 months after the reference year.



**Definitions** **Road accident** (injury accident): Any accident involving at least one road motor vehicle in motion on a public road or square to which the public has access (excluding yards, industrial sites or vehicle depot of public transport enterprises), resulting in at least one injured or killed person. Accidents with only material damages are not included.

**Fatality (Death):** Any person killed immediately or dying within 30 days as a result of an injury accident (This national definition applies since 01.01.1996)

**Person injured:** Any person who sustained an injury as result of an injury accident, and who normally needs medical treatment.

**Serious injury:** Any person who sustained an injury as result of an injury accident, such as brain damages, mutilation, multiple injuries, which may result in lack of awareness or which are life-threatening.

**Slight injury:** Any person injured who sustained minor and not life-threatening injuries.

**Vehicle:** Include motor vehicles, trolleybuses, motorcycles, bicycles, motorbikes, agricultural and road making machines, animal and hand-drawn vehicles. Railway vehicles are excluded, unless the road accident involves at least one of the aforementioned types of vehicles and therefore, railway vehicles are considered vehicles.

**Methodology** The forms of the survey are filled in by the local Police Authorities and the local Port Authorities as well.

**References** More information about Road Traffic Accidents is available on ELSTAT's website and more specifically at the link: <https://www.statistics.gr/en/statistics/-/publication/SDT03/>.