



## PRESS RELEASE

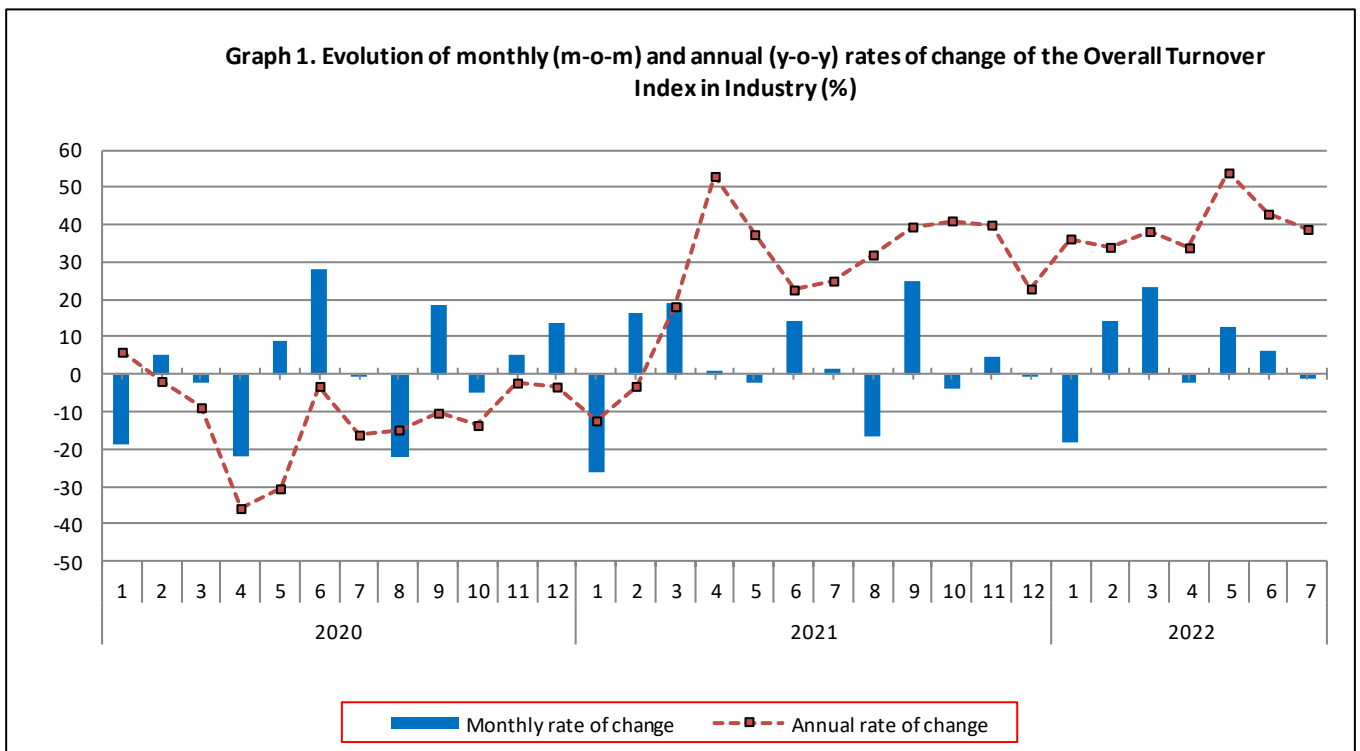
### TURNOVER INDEX IN INDUSTRY: July 2022, y-o-y increase of 38.9%

The Hellenic Statistical Authority announces the Turnover Index in Industry with base year 2015=100.0 for July 2022, the evolution of which on the basis of provisional data, is as follows:

The Overall Turnover Index in Industry (both Domestic and Non-Domestic Market) in July 2022 recorded an increase of 38.9% compared with the corresponding index of July 2021. The Overall Turnover Index in Industry in July 2021 increased by 25.1% compared with the corresponding index in July 2020 (Table 1).

The Overall Turnover Index in Industry in July 2022, compared with June 2022, recorded a decrease of 1.3% (Table 6).

The average Overall Turnover Index in Industry for the 12-month period from August 2021 to July 2022 increased by 38.0%, compared with the corresponding index of the 12-month period from August 2020 to July 2021. The average Overall Turnover Index in Industry for the 12-month period from August 2020 to July 2021 increased by 6.6% compared with the corresponding index of the 12-month period from August 2019 to July 2020 (Table 13).



**Information for methodological issues:**

Division of Business Statistics  
Section of Manufacture-Construction Indices and Industrial Products  
Head of the Section : Diamantaki Aikaterini  
Tel: +30 213 135 2056  
E-mail: [a.diamantaki@statistics.gr](mailto:a.diamantaki@statistics.gr)

**Information for data provision:**

Tel: +30 213 135 2022, 2308, 2310  
E-mail: [data.dissem@statistics.gr](mailto:data.dissem@statistics.gr)

## Evolution of the Overall Turnover Index in Industry in July 2022

### I. Annual changes of the Overall Turnover Index in Industry: July 2022/July 2021

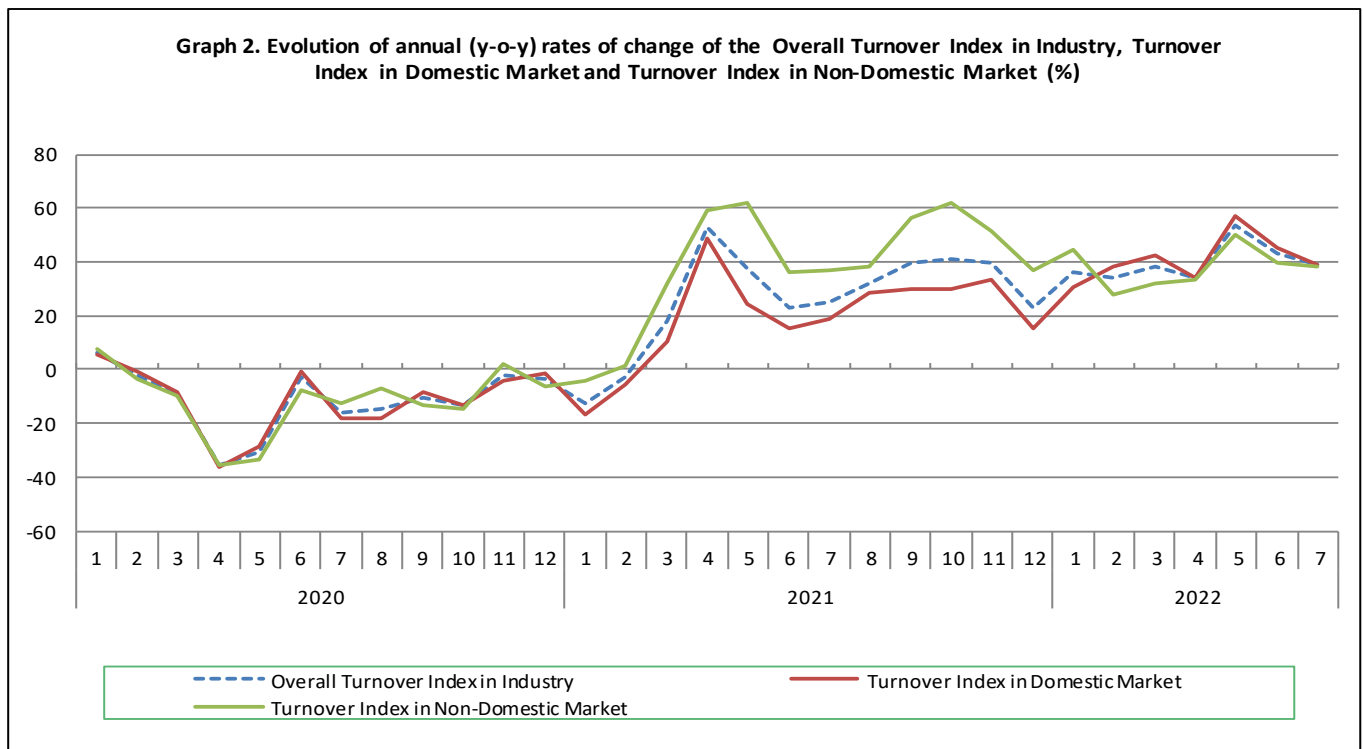
The 38.9% increase in the Overall Turnover Index in Industry in July 2022, compared with the corresponding index in July 2021, was due to the following:

#### 1. Changes in the sub-indices of the industrial sections (Table 1):

- The Turnover Index in Manufacturing increased by 39.0%. The increase was mainly the result of the annual changes of the sub-indices in the following 2-digit divisions: coke and refined petroleum products, tobacco products, chemicals and chemical products, basic metals.
- The Turnover Index in Mining and quarrying increased by 22.1%. The increase was mainly the result of the annual changes of the sub-indices in the following 2-digit divisions: mining of metal ores, mining of coal and lignite - extraction of crude petroleum and natural gas - mining support service activities.

#### 2. Changes in the sub-indices in Domestic and Non-Domestic Markets:

- The Turnover Index in Industry in Domestic Market increased by 39.3% (Table 2).
- The Turnover Index in Industry in Non-Domestic Market increased by 38.1% (Table 3).



### II. Annual changes of the Turnover Index in Industry in Domestic Market: July 2022/July 2021

The 39.3% increase of the Turnover Index in Industry in Domestic Market in July 2022, compared with July 2021, is due to the annual changes in the sub-indices of the following industrial sections (Table 2):

- The Turnover Index in Manufacturing increased by 39.5%. The increase was mainly the result of the annual changes of the sub-indices in the following 2-digit divisions: coke and refined petroleum products, tobacco products, chemicals and chemical products, food.
- The Turnover Index in Mining and quarrying increased by 19.6%. The increase was mainly the result of the annual changes of the sub-indices in the following 2-digit divisions: mining of coal and lignite - extraction of crude petroleum and natural gas - mining support service activities, mining of metal ores.

### III. Annual changes of the Turnover Index in Industry in Non-Domestic Market: July 2022/July 2021

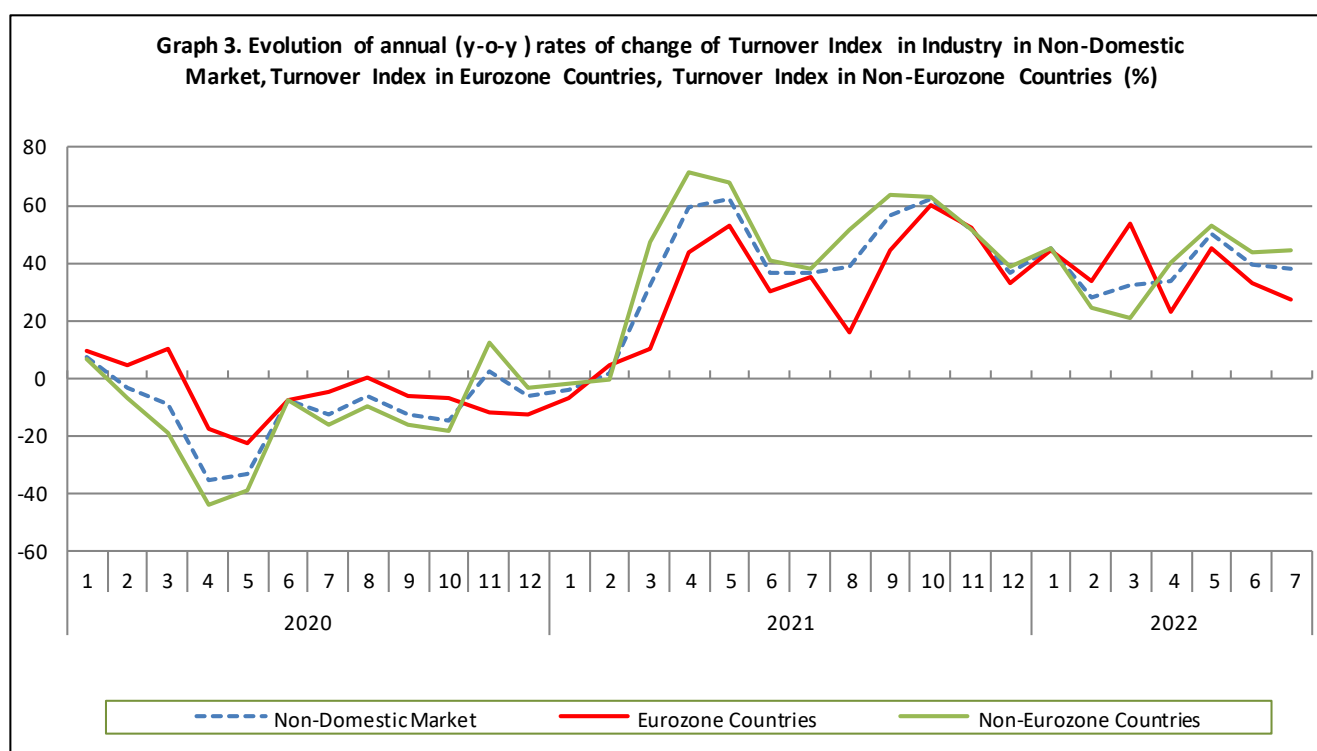
The 38.1% increase of the Turnover Index in Industry in Non-Domestic Market in July 2022, compared with July 2021, was due to the following:

#### 1. Changes in the sub-indices of the industrial sections (Table 3):

- The Turnover Index in Manufacturing increased by 38.3%. The increase was mainly the result of the annual changes of the sub-indices in the following 2-digit divisions: coke and refined petroleum products, tobacco products, basic metals, food.
- The Turnover Index in Mining and quarrying increased by 24.5%. The increase was the result of the annual changes of the sub-indices in the following 2-digit divisions: mining of metal ores, other mining and quarrying products.

#### 2. Changes in the sub-indices in Eurozone and Non-Eurozone countries:

- The Turnover Index in Industry in Non-Eurozone countries increased by 44.5% (Table 5).
- The Turnover Index in Industry in Eurozone countries increased by 26.6% (Table 4).



### IV. Monthly changes of the Overall Turnover Index in Industry: July 2022/ June 2022

The 1.3% decrease of the Overall Turnover Index in Industry in July 2022, compared with the corresponding index in June 2022, was due to the following:

#### 1. Changes in the sub-indices of industrial sections (Table 6):

- The Turnover Index in Mining and quarrying decreased by 2.3%.
- The Turnover Index in Manufacturing decreased by 1.3%.

#### 2. Changes in the sub-indices in Domestic and Non-Domestic Market:

- The Turnover Index in Industry in Domestic Market decreased by 3.6% (Table 7).
- The Turnover Index in Industry in Non-Domestic Market increased by 2.7% (Table 8).

**Table 1. Annual rates of change of the Turnover Index in Industry: Total Market**
**Base year: 2015=100.0**

Code	Division	Weights	July			Rate of change (%)	
			2022*	2021*	2020	2022/2021	2021/2020
<b>OVERALL INDEX</b>			<b>192.95</b>	<b>138.96</b>	<b>111.12</b>	<b>38.9</b>	<b>25.1</b>
<b>B</b>	<b>MINING AND QUARRYING</b>	<b>100.00</b>	<b>118.54</b>	<b>97.07</b>	<b>123.44</b>	<b>22.1</b>	<b>-21.4</b>
<b>05-06-09</b>	Mining of coal and lignite - Extraction of crude petroleum and natural gas - Mining support service activities	21.19	25.34	18.58	73.81	36.4	-74.8
<b>07</b>	Mining of metal ores	17.56	167.94	109.12	199.06	53.9	-45.2
<b>08</b>	Other mining and quarrying products	61.25	136.62	120.78	118.92	13.1	1.6
<b>C MANUFACTURING</b>		<b>100.00</b>	<b>193.96</b>	<b>139.53</b>	<b>110.95</b>	<b>39.0</b>	<b>25.8</b>
<b>10</b>	Food	23.39	149.01	122.87	113.22	21.3	8.5
<b>11</b>	Beverages	3.57	197.70	180.22	157.09	9.7	14.7
<b>12</b>	Tobacco products	1.19	213.70	133.63	118.10	59.9	13.2
<b>13</b>	Textiles	1.28	149.49	142.35	124.26	5.0	14.6
<b>14</b>	Wearing apparel	1.80	116.79	105.03	83.81	11.2	25.3
<b>15</b>	Leather and related products	0.34	97.73	89.59	42.62	9.1	110.2
<b>16</b>	Wood and products of wood and cork, except furniture	0.72	159.56	133.38	129.50	19.6	3.0
<b>17</b>	Paper and paper products	2.44	165.77	126.34	121.68	31.2	3.8
<b>18</b>	Printing and reproduction of recorded products	1.17	124.84	102.78	97.18	21.5	5.8
<b>19</b>	Coke and refined petroleum products	28.73	246.47	125.13	76.73	97.0	63.1
<b>20</b>	Chemicals and chemical products	4.43	198.82	148.13	133.32	34.2	11.1
<b>21</b>	Basic pharmaceutical products and pharmaceutical preparations	3.67	245.71	242.85	186.61	1.2	30.1
<b>22</b>	Rubber and plastic products	3.47	175.98	151.73	134.09	16.0	13.2
<b>23</b>	Other non-metallic mineral products	3.31	161.11	140.51	120.85	14.7	16.3
<b>24</b>	Basic metals	7.19	219.82	174.54	124.77	25.9	39.9
<b>25</b>	Fabricated metal products, except machinery and equipment	4.51	156.89	149.56	121.95	4.9	22.6
<b>26</b>	Computers, electronic and optical products	0.78	269.51	207.90	172.47	29.6	20.5
<b>27</b>	Electrical equipment	2.65	213.43	166.28	132.45	28.4	25.5
<b>28</b>	Machinery and equipment n.e.c.	1.56	153.33	142.02	120.22	8.0	18.1
<b>29</b>	Motor vehicles, trailers and semi-trailers	0.23	200.37	154.28	111.39	29.9	38.5
<b>30</b>	Other transport equipment	0.52	120.25	94.03	87.30	27.9	7.7
<b>31</b>	Furniture	0.97	174.03	157.20	142.78	10.7	10.1
<b>32</b>	Other manufacturing	0.66	150.12	134.71	111.17	11.4	21.2
<b>33</b>	Repair and installation of machinery and equipment	1.42	115.38	96.52	119.11	19.5	-19.0
<b>MAIN INDUSTRIAL GROUPINGS</b>							
<b>1</b>	Energy	28.57	244.81	124.34	76.86	96.9	61.8
<b>2</b>	Intermediate goods	28.29	187.18	149.75	124.41	25.0	20.4
<b>3</b>	Capital goods	7.00	154.10	138.59	119.60	11.2	15.9
<b>4</b>	Consumer Durables	1.86	163.35	145.94	134.02	11.9	8.9
<b>5</b>	Consumer Non-Durables	34.28	164.04	141.94	125.72	15.6	12.9

\* Provisional data

Note: The indices and the percentage changes are rounded up to two and one decimal digits, respectively, when published.

**Table 2. Annual rates of change of the Turnover Index in Industry: Domestic Market**

Base year: 2015=100.0

Code	Division	Weights	July			Rate of change (%)	
			2022*	2021*	2020	2022/2021	2021/2020
<b>OVERALL INDEX</b>			<b>178.92</b>	<b>128.41</b>	<b>108.20</b>	<b>39.3</b>	<b>18.7</b>
<b>B</b>	<b>MINING AND QUARRYING</b>	<b>100.00</b>	<b>98.77</b>	<b>82.61</b>	<b>84.80</b>	<b>19.6</b>	<b>-2.6</b>
05-06-09	Mining of coal and lignite - Extraction of crude petroleum and natural gas - Mining support service activities	31.66	29.96	21.97	23.41	36.4	-6.2
07	Mining of metal ores	12.83	113.41	93.02	120.82	21.9	-23.0
08	Other mining and quarrying products	55.50	134.64	114.78	111.48	17.3	3.0
<b>C</b>	<b>MANUFACTURING</b>	<b>100.00</b>	<b>179.84</b>	<b>128.94</b>	<b>108.47</b>	<b>39.5</b>	<b>18.9</b>
10	Food	28.50	139.28	115.18	106.86	20.9	7.8
11	Beverages	4.86	200.01	180.76	155.31	10.7	16.4
12	Tobacco products	0.51	275.07	177.03	200.75	55.4	-11.8
13	Textiles	1.11	148.31	136.12	115.15	9.0	18.2
14	Wearing apparel	1.77	113.63	104.74	81.80	8.5	28.0
15	Leather and related products	0.41	81.67	65.49	45.11	24.7	45.2
16	Wood and products of wood and cork, except furniture	0.96	152.67	126.23	127.00	21.0	-0.6
17	Paper and paper products	3.12	162.36	123.49	119.31	31.5	3.5
18	Printing and reproduction of recorded products	1.63	108.83	86.54	86.14	25.8	0.5
19	Coke and refined petroleum products	24.90	223.59	96.05	62.62	132.8	53.4
20	Chemicals and chemical products	4.90	191.99	139.45	130.45	37.7	6.9
21	Basic pharmaceutical products and pharmaceutical preparations	3.85	236.69	224.62	160.49	5.4	40.0
22	Rubber and plastic products	3.31	176.56	150.06	136.18	17.7	10.2
23	Other non-metallic mineral products	3.31	173.02	143.23	129.33	20.8	10.7
24	Basic metals	3.49	257.93	216.91	160.77	18.9	34.9
25	Fabricated metal products, except machinery and equipment	4.25	177.80	172.05	142.01	3.3	21.2
26	Computers, electronic and optical products	0.40	130.45	125.36	144.89	4.1	-13.5
27	Electrical equipment	2.24	206.86	157.65	146.38	31.2	7.7
28	Machinery and equipment n.e.c.	1.46	149.83	151.72	125.36	-1.2	21.0
29	Motor vehicles, trailers and semi-trailers	0.27	224.85	164.47	113.04	36.7	45.5
30	Other transport equipment	0.58	92.00	84.64	72.13	8.7	17.3
31	Furniture	1.35	168.91	148.63	133.68	13.6	11.2
32	Other manufacturing	0.88	147.07	130.64	104.40	12.6	25.1
33	Repair and installation of machinery and equipment	1.92	119.99	101.87	126.42	17.8	-19.4
<b>MAIN INDUSTRIAL GROUPINGS</b>							
1	Energy	24.89	221.62	95.34	62.27	132.5	53.1
2	Intermediate goods	25.73	185.26	146.90	130.39	26.1	12.7
3	Capital goods	7.19	148.82	143.57	125.65	3.7	14.3
4	Consumer Durables	2.31	154.02	137.14	121.36	12.3	13.0
5	Consumer Non-Durables	39.88	155.05	133.87	118.64	15.8	12.8

\* Provisional data

Note: The indices and the percentage changes are rounded up to two and one decimal digits, respectively, when published.

**Table 3. Annual rates of change of the Turnover Index in Industry: Non-Domestic Market**

Base year: 2015=100.0

Code	Division	Weights	July			Rate of change (%)	
			2022*	2021*	2020	2022/2021	2021/2020
<b>OVERALL INDEX</b>			<b>220.60</b>	<b>159.75</b>	<b>116.86</b>	<b>38.1</b>	<b>36.7</b>
<b>B</b>	<b>MINING AND QUARRYING</b>	<b>100.00</b>	<b>144.35</b>	<b>115.95</b>	<b>173.87</b>	<b>24.5</b>	<b>-33.3</b>
05-06-09	Mining of coal and lignite - Extraction of crude petroleum and natural gas - Mining support service activities	7.53	0.00	0.00	350.51	-	-100.0
07	Mining of metal ores	23.74	206.43	120.48	254.26	71.3	-52.6
08	Other mining and quarrying products	68.74	138.71	127.09	126.77	9.1	0.3
<b>C MANUFACTURING</b>		<b>100.00</b>	<b>221.94</b>	<b>160.52</b>	<b>115.86</b>	<b>38.3</b>	<b>38.5</b>
10	Food	13.27	190.43	155.61	140.33	22.4	10.9
11	Beverages	1.01	175.70	175.09	174.03	0.3	0.6
12	Tobacco products	2.53	188.96	116.14	84.77	62.7	37.0
13	Textiles	1.61	151.11	150.91	136.77	0.1	10.3
14	Wearing apparel	1.86	122.75	105.59	87.58	16.3	20.6
15	Leather and related products	0.19	166.73	193.13	31.93	-13.7	504.8
16	Wood and products of wood and cork, except furniture	0.24	214.21	190.15	149.28	12.7	27.4
17	Paper and paper products	1.11	184.78	142.20	134.82	30.0	5.5
18	Printing and reproduction of recorded products	0.26	324.18	305.06	234.72	6.3	30.0
19	Coke and refined petroleum products	36.32	277.55	164.63	95.90	68.6	71.7
20	Chemicals and chemical products	3.50	217.73	172.15	141.28	26.5	21.9
21	Basic pharmaceutical products and pharmaceutical preparations	3.30	266.56	284.99	246.93	-6.5	15.4
22	Rubber and plastic products	3.79	174.99	154.63	130.46	13.2	18.5
23	Other non-metallic mineral products	3.31	137.49	135.11	104.01	1.8	29.9
24	Basic metals	14.54	201.69	154.39	107.65	30.6	43.4
25	Fabricated metal products, except machinery and equipment	5.03	121.87	111.88	88.34	8.9	26.6
26	Computers, electronic and optical products	1.52	341.87	250.86	186.83	36.3	34.3
27	Electrical equipment	3.44	221.93	177.44	114.46	25.1	55.0
28	Machinery and equipment n.e.c.	1.76	159.10	126.08	111.78	26.2	12.8
29	Motor vehicles, trailers and semi-trailers	0.14	105.05	114.57	104.95	-8.3	9.2
30	Other transport equipment	0.40	200.75	120.77	130.51	66.2	-7.5
31	Furniture	0.21	239.15	266.25	258.75	-10.2	2.9
32	Other manufacturing	0.22	173.79	166.23	163.70	4.5	1.5
33	Repair and installation of machinery and equipment	0.43	74.84	49.54	54.84	51.1	-9.7
<b>MAIN INDUSTRIAL GROUPINGS</b>							
1	Energy	35.82	276.55	164.03	96.82	68.6	69.4
2	Intermediate goods	33.33	190.11	154.09	115.32	23.4	33.6
3	Capital goods	6.62	165.39	127.94	106.67	29.3	19.9
4	Consumer Durables	0.98	206.78	186.92	192.93	10.6	-3.1
5	Consumer Non-Durables	23.25	194.43	169.18	149.64	14.9	13.1

\* Provisional data

Note: The indices and the percentage changes are rounded up to two and one decimal digits, respectively, when published.

**Table 4. Annual rates of change of the Turnover Index in Industry: Eurozone Countries**

Base year: 2015=100.0

Code	Sections and main groupings	July			Rate of change (%)	
		2022*	2021*	2020	2022/2021	2021/2020
<b>OVERALL INDEX</b>		<b>208.36</b>	<b>164.56</b>	<b>121.46</b>	<b>26.6</b>	<b>35.5</b>
<b>INDUSTRIAL SECTIONS</b>						
<b>B</b>	MINING AND QUARRYING	132.47	147.82	177.72	-10.4	-16.8
<b>C</b>	MANUFACTURING	209.88	164.89	120.33	27.3	37.0
<b>MAIN INDUSTRIAL GROUPINGS</b>						
<b>1</b>	Energy	228.96	129.16	67.35	77.3	91.8
<b>2</b>	Intermediate goods	195.06	157.87	120.14	23.6	31.4
<b>3</b>	Capital goods	171.59	163.29	132.47	5.1	23.3
<b>4</b>	Consumer Durables	330.67	287.80	271.52	14.9	6.0
<b>5</b>	Consumer Non-Durables	210.33	192.86	153.94	9.1	25.3

\* Provisional data

**Table 5. Annual rates of change of the Turnover Index in Industry: Non-Eurozone Countries**

Base year: 2015=100.0

Code	Sections and main groupings	July			Rate of change (%)	
		2022*	2021*	2020	2022/2021	2021/2020
<b>OVERALL INDEX</b>		<b>227.11</b>	<b>157.19</b>	<b>114.41</b>	<b>44.5</b>	<b>37.4</b>
<b>INDUSTRIAL SECTIONS</b>						
<b>B</b>	MINING AND QUARRYING	152.14	95.04	171.34	60.1	-44.5
<b>C</b>	MANUFACTURING	228.33	158.20	113.49	44.3	39.4
<b>MAIN INDUSTRIAL GROUPINGS</b>						
<b>1</b>	Energy	290.25	174.08	105.31	66.7	65.3
<b>2</b>	Intermediate goods	186.88	151.63	112.18	23.2	35.2
<b>3</b>	Capital goods	163.29	115.96	97.93	40.8	18.4
<b>4</b>	Consumer Durables	121.23	117.25	138.65	3.4	-15.4
<b>5</b>	Consumer Non-Durables	178.97	146.14	145.46	22.5	0.5

\* Provisional data

Note: The indices and the percentage changes are rounded up to two and one decimal digits, respectively, when published.

**Table 6. Monthly rate of change of the Turnover Index in Industry: Total Market**

Base year: 2015=100.0

Code	Sections and main groupings	July 2022*	June 2022**	Rate of change (%) July 2022 / June 2022
<b>OVERALL INDEX</b>		<b>192.95</b>	<b>195.46</b>	<b>-1.3</b>
<b>INDUSTRIAL SECTIONS</b>				
<b>B</b>	MINING AND QUARRYING	118.54	121.28	-2.3
<b>C</b>	MANUFACTURING	193.96	196.47	-1.3
<b>MAIN INDUSTRIAL GROUPINGS</b>				
<b>1</b>	Energy	244.81	249.89	-2.0
<b>2</b>	Intermediate goods	187.18	198.12	-5.5
<b>3</b>	Capital goods	154.10	159.58	-3.4
<b>4</b>	Consumer Durables	163.35	176.61	-7.5
<b>5</b>	Consumer Non-Durables	164.04	156.26	5.0

**Table 7. Monthly rate of change of the Turnover Index in Industry: Domestic Market**

Base year: 2015=100.0

Code	Sections and main groupings	July 2022*	June 2022**	Rate of change (%) July 2022 / June 2022
<b>OVERALL INDEX</b>		<b>178.92</b>	<b>185.66</b>	<b>-3.6</b>
<b>INDUSTRIAL SECTIONS</b>				
<b>B</b>	MINING AND QUARRYING	98.77	95.01	4.0
<b>C</b>	MANUFACTURING	179.84	186.70	-3.7
<b>MAIN INDUSTRIAL GROUPINGS</b>				
<b>1</b>	Energy	221.62	255.73	-13.3
<b>2</b>	Intermediate goods	185.26	189.44	-2.2
<b>3</b>	Capital goods	148.82	161.03	-7.6
<b>4</b>	Consumer Durables	154.02	161.11	-4.4
<b>5</b>	Consumer Non-Durables	155.05	145.36	6.7

**Table 8. Monthly rate of change of the Turnover Index in Industry: Non-Domestic Market**

Base year: 2015=100.0

Code	Sections and main groupings	July 2022*	June 2022**	Rate of change (%) July 2022 / June 2022
<b>OVERALL INDEX</b>		<b>220.60</b>	<b>214.78</b>	<b>2.7</b>
<b>INDUSTRIAL SECTIONS</b>				
<b>B</b>	MINING AND QUARRYING	144.35	155.57	-7.2
<b>C</b>	MANUFACTURING	221.94	215.81	2.8
<b>MAIN INDUSTRIAL GROUPINGS</b>				
<b>1</b>	Energy	276.55	241.91	14.3
<b>2</b>	Intermediate goods	190.11	211.31	-10.0
<b>3</b>	Capital goods	165.39	156.48	5.7
<b>4</b>	Consumer Durables	206.78	248.75	-16.9
<b>5</b>	Consumer Non-Durables	194.43	193.12	0.7

\* Provisional data \*\* Revised data

Note: The indices and the percentage changes are rounded up to two and one decimal digits, respectively, when published.



**Table 9. Monthly rate of change of the Turnover Index in Industry: Eurozone Countries**

Base year: 2015=100.0

Code	Sections and main groupings	July 2022*	June 2022**	Rate of change (%) July 2022 / June 2022
<b>OVERALL INDEX</b>		<b>208.36</b>	<b>219.38</b>	<b>-5.0</b>
<b>INDUSTRIAL SECTIONS</b>				
<b>B</b>	MINING AND QUARRYING	132.47	238.91	-44.6
<b>C</b>	MANUFACTURING	209.88	218.99	-4.2
<b>MAIN INDUSTRIAL GROUPINGS</b>				
<b>1</b>	Energy	228.96	197.74	15.8
<b>2</b>	Intermediate goods	195.06	233.52	-16.5
<b>3</b>	Capital goods	171.59	201.94	-15.0
<b>4</b>	Consumer Durables	330.67	363.73	-9.1
<b>5</b>	Consumer Non-Durables	210.33	215.79	-2.5

\* Provisional data \*\* Revised data

**Table 10. Monthly rate of change of the Turnover Index in Industry: Non-Eurozone Countries**

Base year: 2015=100.0

Code	Sections and main groupings	July 2022*	June 2022**	Rate of change (%) July 2022 / June 2022
<b>OVERALL INDEX</b>		<b>227.11</b>	<b>212.33</b>	<b>7.0</b>
<b>INDUSTRIAL SECTIONS</b>				
<b>B</b>	MINING AND QUARRYING	152.14	100.85	50.9
<b>C</b>	MANUFACTURING	228.33	214.14	6.6
<b>MAIN INDUSTRIAL GROUPINGS</b>				
<b>1</b>	Energy	290.25	254.63	14.0
<b>2</b>	Intermediate goods	186.88	196.83	-5.1
<b>3</b>	Capital goods	163.29	141.07	15.7
<b>4</b>	Consumer Durables	121.23	169.35	-28.4
<b>5</b>	Consumer Non-Durables	178.97	171.06	4.6

\* Provisional data \*\* Revised data

Note: The indices and the percentage changes are rounded up to two and one decimal digits, respectively, when published.

**Table 11. Evolution of the Turnover Index in Industry (y-o-y changes): Total Market**

Base year: 2015=100.0

Year and month	Overall Index (Total Market)		Turnover Index in Industry in Domestic Market		Turnover Index in Industry in Non-Domestic Market	
	Index	Annual rate of change (%)	Index	Annual rate of change (%)	Index	Annual rate of change (%)
<b>2021*:</b> 7	138.96	25.1	128.41	18.7	159.75	36.7
8	115.35	31.7	111.15	28.2	123.62	38.5
9	144.62	39.6	131.55	30.3	170.36	56.5
10	138.80	41.1	125.92	30.0	164.19	61.9
11	144.86	39.9	132.69	33.2	168.86	51.5
12	144.88	22.8	133.36	15.2	167.59	37.1
<b>2022*:</b> 1	118.72	36.3	105.71	30.9	144.35	44.9
2	135.81	34.1	128.47	38.2	150.26	27.7
3	167.14	38.3	152.83	42.7	195.34	32.1
4	163.54	33.9	149.54	34.2	191.14	33.6
5	184.26	54.0	166.37	56.9	219.51	49.8
6	195.46	43.0	185.66	45.0	214.78	39.6
7	192.95	38.9	178.92	39.3	220.60	38.1

\*Provisional data

**Table 12. Evolution of the Turnover Index in Industry (y-o-y changes): Non-Domestic Market**

Base year: 2015=100.0

Year and month	Overall Index (Non-Domestic Market)		Turnover Index in Industry in Eurozone Countries		Turnover Index in Industry in Non-Eurozone Countries	
	Index	Annual rate of change (%)	Index	Annual rate of change (%)	Index	Annual rate of change (%)
<b>2021*:</b> 7	159.75	36.7	164.56	35.5	157.19	37.4
8	123.62	38.5	107.12	16.8	132.39	50.6
9	170.36	56.5	162.77	44.4	174.40	63.3
10	164.19	61.9	170.44	60.3	160.87	62.8
11	168.86	51.5	171.78	51.8	167.30	51.4
12	167.59	37.1	143.98	33.3	180.14	38.8
<b>2022*:</b> 1	144.35	44.9	156.46	44.2	137.92	45.3
2	150.26	27.7	172.98	33.8	138.18	23.9
3	195.34	32.1	226.00	53.7	179.04	20.7
4	191.14	33.6	191.95	23.2	190.71	39.9
5	219.51	49.8	235.36	45.4	211.09	52.6
6	214.78	39.6	219.38	32.9	212.33	43.6
7	220.60	38.1	208.36	26.6	227.11	44.5

\*Provisional data

Note: The indices and the percentage changes are rounded up to two and one decimal digits, respectively, when published.

**Table 13. Average indices and rates of change (%) of the 12-month periods of Turnover Index in Industry: Total Market**  
**Base year: 2015=100.0**

Code	Division	Average Indices of 12-month periods			Rate of change (%)	
		Aug. 2021*- July 2022*	Aug. 2020- July 2021*	Aug. 2019- July 2020	2022/2021	2021/2020
<b>OVERALL INDEX</b>		<b>153.87</b>	<b>111.48</b>	<b>104.63</b>	<b>38.0</b>	<b>6.6</b>
<b>B</b>	<b>MINING AND QUARRYING</b>	<b>105.00</b>	<b>101.39</b>	<b>99.72</b>	<b>3.6</b>	<b>1.7</b>
<b>05-06-09</b>	Mining of coal and lignite - Extraction of crude petroleum and natural gas - Mining support service activities	24.67	27.83	39.16	-11.3	-28.9
<b>07</b>	Mining of metal ores	167.69	172.16	178.28	-2.6	-3.4
<b>08</b>	Other mining and quarrying products	114.82	106.55	98.14	7.8	8.6
<b>C</b>	<b>MANUFACTURING</b>	<b>154.53</b>	<b>111.62</b>	<b>104.70</b>	<b>38.4</b>	<b>6.6</b>
<b>10</b>	Food	126.86	107.09	103.29	18.5	3.7
<b>11</b>	Beverages	129.75	108.13	101.62	20.0	6.4
<b>12</b>	Tobacco products	154.85	143.06	131.16	8.2	9.1
<b>13</b>	Textiles	127.95	110.79	98.46	15.5	12.5
<b>14</b>	Wearing apparel	91.50	70.77	78.65	29.3	-10.0
<b>15</b>	Leather and related products	77.43	60.12	71.71	28.8	-16.2
<b>16</b>	Wood and products of wood and cork, except furniture	135.91	108.77	102.88	25.0	5.7
<b>17</b>	Paper and paper products	139.50	112.94	114.21	23.5	-1.1
<b>18</b>	Printing and reproduction of recorded products	109.05	91.69	91.29	18.9	0.4
<b>19</b>	Coke and refined petroleum products	173.62	92.73	94.29	87.2	-1.7
<b>20</b>	Chemicals and chemical products	166.83	127.96	117.92	30.4	8.5
<b>21</b>	Basic pharmaceutical products and pharmaceutical preparations	199.29	179.17	155.55	11.2	15.2
<b>22</b>	Rubber and plastic products	150.78	120.74	107.95	24.9	11.8
<b>23</b>	Other non-metallic mineral products	137.07	114.40	102.58	19.8	11.5
<b>24</b>	Basic metals	209.80	139.86	117.27	50.0	19.3
<b>25</b>	Fabricated metal products, except machinery and equipment	133.97	111.62	96.50	20.0	15.7
<b>26</b>	Computers, electronic and optical products	210.70	175.80	165.86	19.8	6.0
<b>27</b>	Electrical equipment	203.90	168.85	128.46	20.8	31.4
<b>28</b>	Machinery and equipment n.e.c.	134.42	117.73	103.53	14.2	13.7
<b>29</b>	Motor vehicles, trailers and semi-trailers	164.30	112.10	111.28	46.6	0.7
<b>30</b>	Other transport equipment	81.28	73.64	59.27	10.4	24.2
<b>31</b>	Furniture	143.40	114.67	104.40	25.1	9.8
<b>32</b>	Other manufacturing	125.08	100.34	92.98	24.7	7.9
<b>33</b>	Repair and installation of machinery and equipment	108.17	102.59	97.43	5.4	5.3
<b>MAIN INDUSTRIAL GROUPINGS</b>						
<b>1</b>	Energy	172.52	92.28	93.94	87.0	-1.8
<b>2</b>	Intermediate goods	166.77	126.54	111.07	31.8	13.9
<b>3</b>	Capital goods	132.66	114.95	102.86	15.4	11.8
<b>4</b>	Consumer Durables	135.20	109.62	99.39	23.3	10.3
<b>5</b>	Consumer Non-Durables	133.03	114.46	108.87	16.2	5.1

\*Provisional data

Note: The indices and the percentage changes are rounded up to two and one decimal digits, respectively, when published.

## METHODOLOGICAL NOTES

<b>Generally</b>	The Industrial Turnover Index is an indicator of an enterprise's business cycle showing the monthly evolution of the market of goods and services in industry. The first compilation of the Turnover Index was completed by the Hellenic Statistical Authority in 2006, with base year 2000=100.0 and is compiled from 2000 onwards.
<b>Purpose of the index</b>	The purpose of this index is to measure the monthly activity of the industrial sector in terms of value. Turnover comprises the totals invoiced by the observation units during the reference period and corresponds to the market sales of goods or services supplied to third parties. The purposes and the characteristics of the Turnover Index apply, as well, to the indices for the distinction between domestic and non-domestic turnover.
<b>Legal Framework</b>	The compilation and publication of the Turnover Index is based on the framework of the implementation of Council Regulation (EC) No 1165/1998 concerning short-term statistics (STS-R), as well as Regulation (EC) No 1158/2005 of the European Parliament and of the Council amending Council Regulation (EC) No 1165/1998. Furthermore, this index is governed by Regulation (EC) No 1893/2006 of the European Parliament and of the Council, by Commission Regulation (EC) No 656/2007, by Regulation (EC) No 451/2008 of the Council, by Regulation (EU) No 2019/2152 of the European Parliament and of the Council on European business statistics, as well as Commission Implementing Regulation (EU) No 2020/1197 laying down technical specifications and arrangements pursuant to Regulation (EU) No 2019/2152.
<b>Reference period</b>	Month.
<b>Base year</b>	2015=100.0.
<b>Revision</b>	The latest revision of the Turnover Index in Industry (base year 2015=100.0) took place in the framework of Council Regulation (EC) No 1165/1998 concerning short-term statistics. In accordance with this regulation the index is revised every five years, in years ending in 0 or 5.
<b>Statistical classifications</b>	At the level of classes of economic activities, the statistical classification of economic activities NACE Rev. 2 of EU was used (Regulation No 1893/2006), while at the level of main industrial groupings, the allocation of two-digit and three-digit NACE Rev. 2 headings to categories of aggregate classification was used, in accordance with Commission Regulation No 656/2007.
<b>Geographical coverage</b>	The index covers the whole Country.
<b>Coverage of economic activities</b>	The Turnover Index in Industry is compiled for all activities listed in Sections B (mining and quarrying) and C (manufacturing) of the NACE Rev. 2 statistical classification.
<b>Computation of the Index</b>	The Turnover Index in Industry is a fixed base index. This index is calculated at a first stage at the four-digit level of economic activity and subsequently, with the implementation of appropriate weighting coefficients, the index is calculated at higher levels (three-level and two-level of economic activity) as well as at the level of Main Industrial Groupings (MIGs).
<b>Publication of data</b>	The Turnover Index in Industry (2015=100.0) is released since August 2019 with June 2019 as first reference month. Data with base year 2015=100.0 are available from January 2000 onwards.
<b>References</b>	More information about the methodology concerning the compilation and calculation of the index and for the time series is available on the website of the Hellenic Statistical Authority (ELSTAT) ( <a href="http://www.statistics.gr/en/statistics/-/publication/DKT24/">http://www.statistics.gr/en/statistics/-/publication/DKT24/</a> ).