



PRESS RELEASE

INDUSTRIAL PRODUCTION INDEX: February 2020, y-o-y decrease of 3.4%

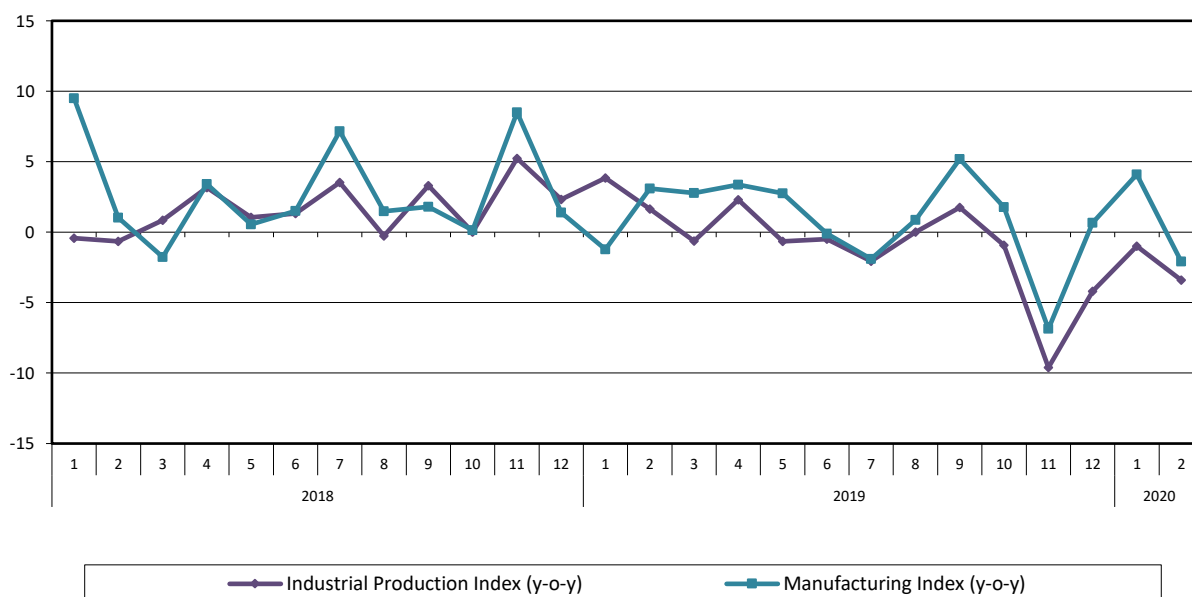
The Hellenic Statistical Authority announces the Industrial Production Index (IPI) with base year 2015=100.0 for February 2020, on the basis of provisional and working day adjusted data, as follows:

The Overall Industrial Production Index in February 2020 recorded a decrease of 3.4% compared with February 2019. The Overall IPI in February 2019 increased by 1.6% compared with the corresponding index in February 2018 (Table 1).

The average Overall Industrial Production Index for the period from January to February 2020 recorded a decrease of 2.2% compared with the average IPI of the period from January to February 2019 (Table 2).

The seasonally adjusted Overall Industrial Production Index in February 2020 recorded a decrease of 3.6% compared with January 2020 (Table 4).

Graph 1. Evolution of annual rates of change (y-o-y) of the Industrial Production Index and the Manufacturing Index (%)



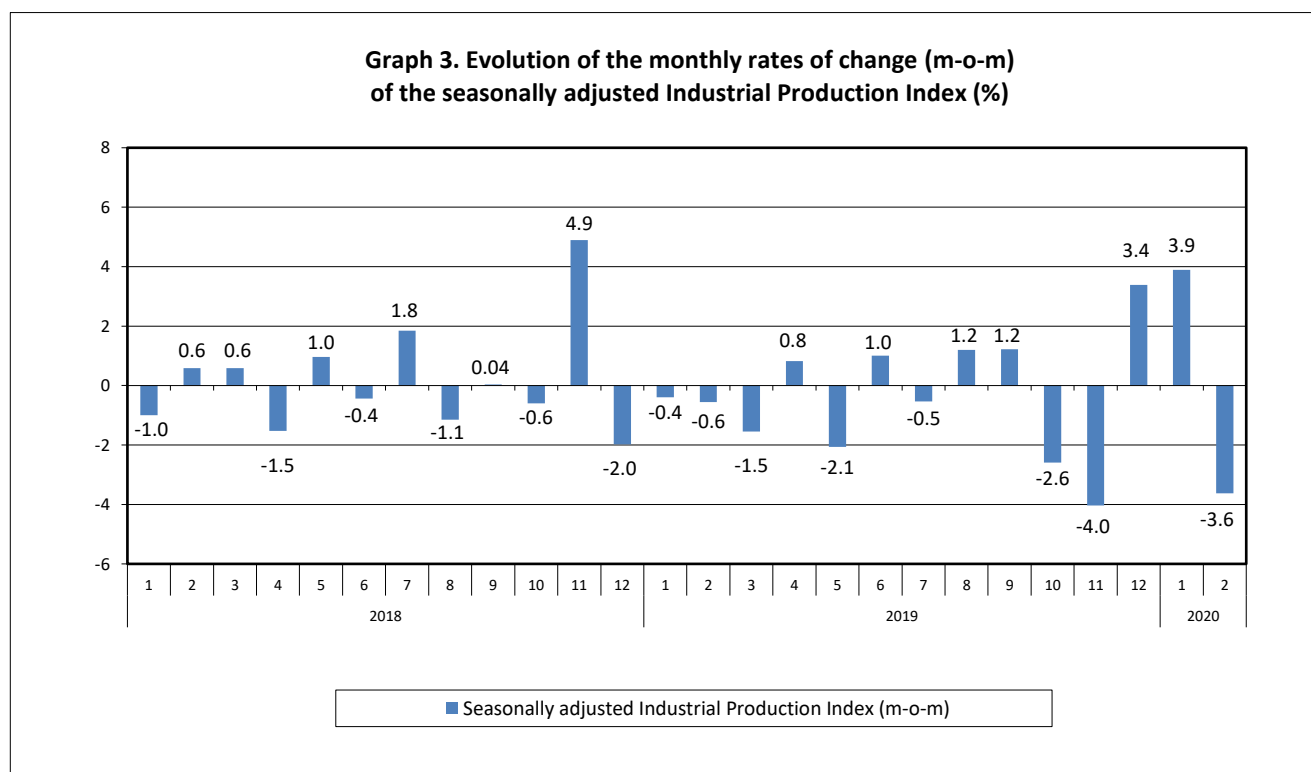
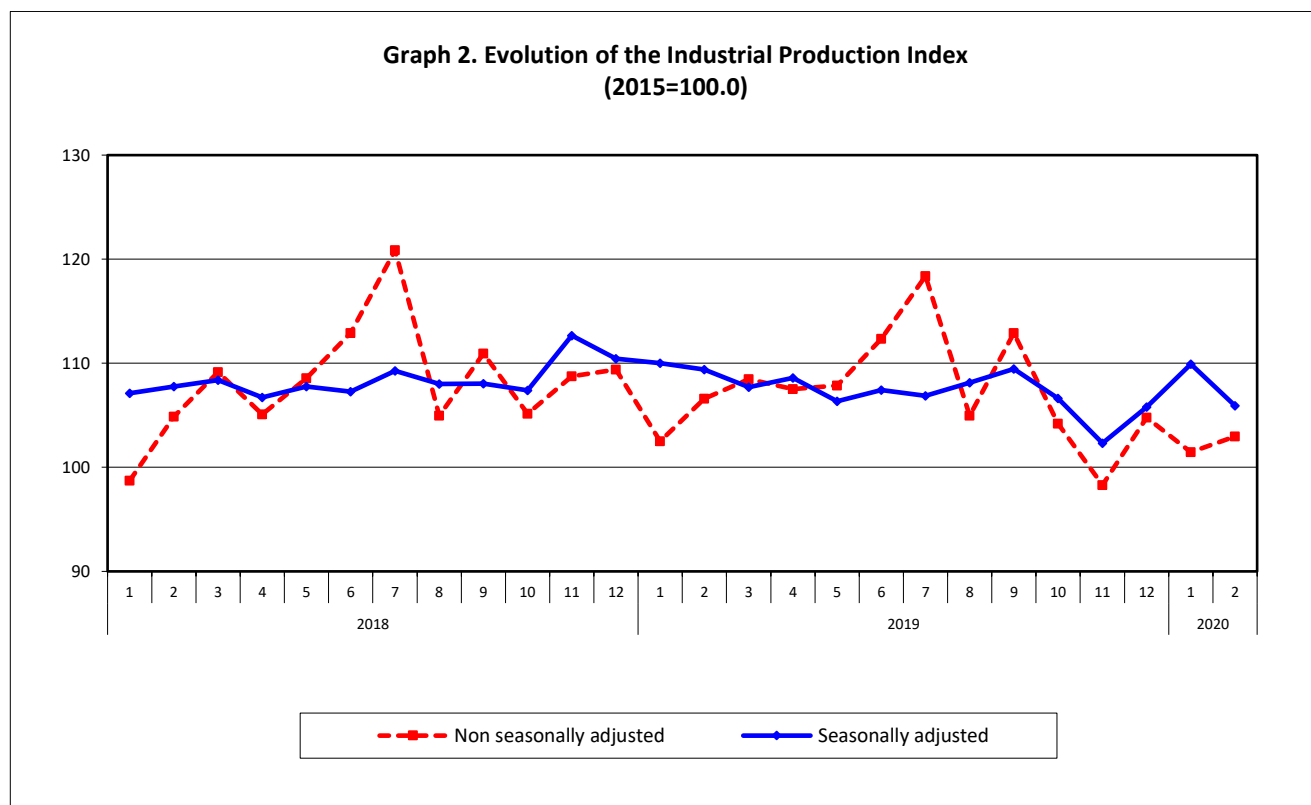
Information for methodological issues:

Business Statistics Division
Manufacture-Construction Indices and Industrial Products Section
Head of the Section: Diamantaki Aikaterini
Tel: +30 213 135 2056
Fax: +30 213 135 2506
E-mail: a.diamantaki@statistics.gr

Information for data provision:

Tel: +30 213 135 2022, 2308, 2310
E-mail: data.dissem@statistics.gr

The following graphs depict the evolution of the seasonally and non-seasonally adjusted Overall Industrial Production Index, as well as the monthly rates of change (m-o-m) of the seasonally adjusted index.



It should be noted that the time series with the seasonally adjusted indices is recalculated every time a new observation is added in the time series. Therefore, the seasonally adjusted data differ from the data published in the previous Press Release.

Evolution of the Industrial Production Index in February 2020

I. Annual changes: February 2020/ February 2019 (Table 1)

The 3.4% decrease of the working day adjusted Overall IPI in February 2020, compared with the corresponding index in February 2019, is due to the annual changes of the sub-indices in the following industrial sections:

1. Decrease of:

- 2.1% in the Manufacturing Index. The decrease was the result of the annual changes of the sub-indices in the following 2-digit divisions: tobacco products, wearing apparel, leather and related products, coke and refined petroleum products, fabricated metal products.
- 10.0% in the Electricity Supply Index.
- 1.1% in the Water Supply Index.

2. Increase of:

- 17.7% in the Mining and Quarrying Index. The increase was the result of the annual changes of the sub-indices in the following 2-digit divisions: mining of metal ores, other mining and quarrying.

II. Rates of change of the average index in the period January – February 2020 compared with the corresponding index of the period January – February 2019 (Table 2)

The 2.2% decrease of the working day adjusted average Overall IPI in the 2-month period January – February 2020, compared with the corresponding index in January – February 2019, is due to the corresponding rates of change of the sub-indices in the following industrial sections:

1. Decrease of:

- 12.7% in the Electricity Supply Index.
- 0.8% in the Water Supply Index.

2. Increase of:

- 21.4% in the Mining and Quarrying Index.
- 0.8% in the Manufacturing Index.

III. Monthly changes: February 2020 / January 2020 (Table 4)

The 3.6% decrease of the seasonally adjusted Overall IPI in February 2020, compared with the corresponding index in January 2020 is due to the monthly changes of the sub-indices in the following industrial sections:

Decrease of:

- 0.7% in the Mining and Quarrying Index.
- 3.6% in the Manufacturing Index.
- 7.9% in the Electricity Supply Index.
- 1.4% in the Water Supply Index.

The following graph depicts the evolution of the Industrial Production Index and the Industrial Sections Indices.

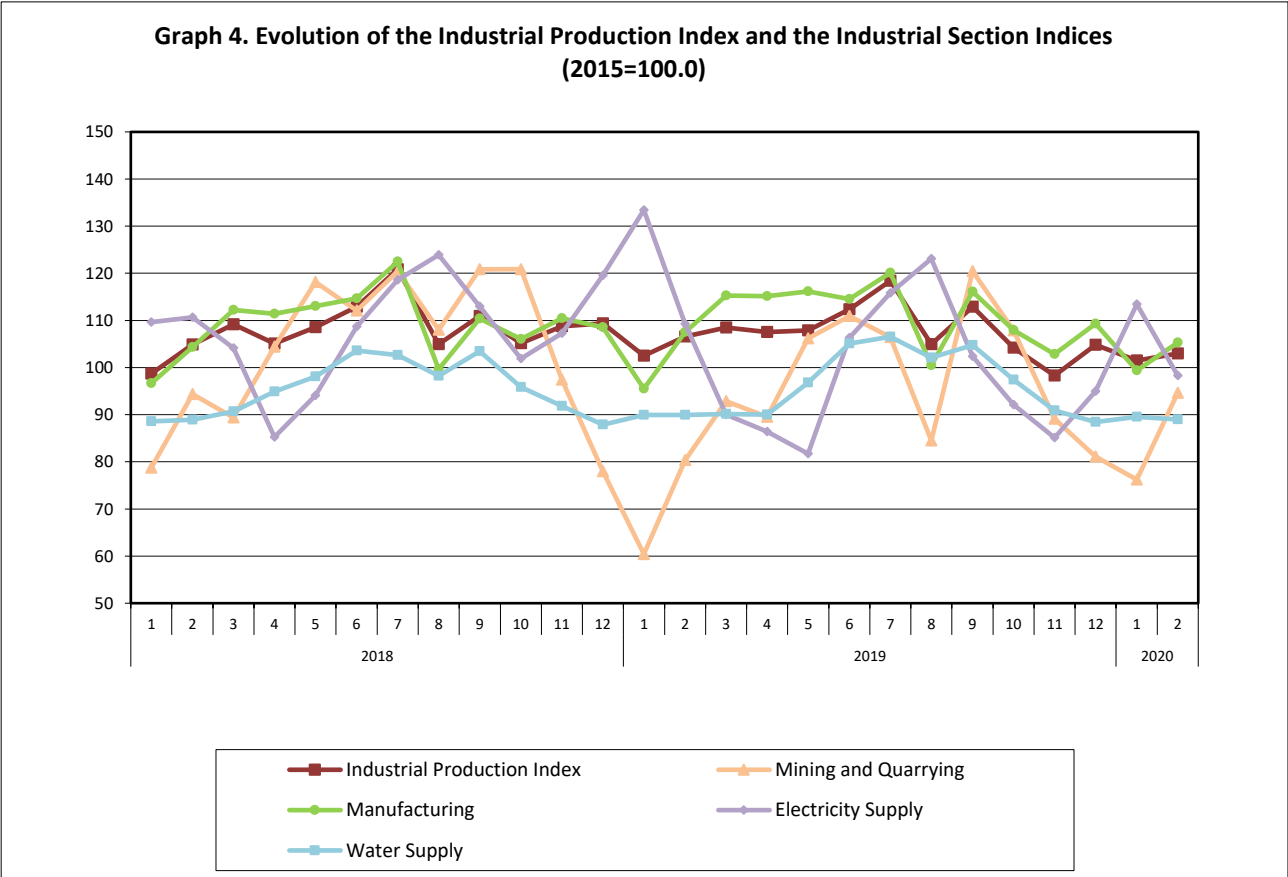


Table 1. Annual rates of change of the Industrial Production Index*(Working day adjusted data, according to the real number of working days)***Base year: 2015=100.0**

Code		Division	February			Rate of change (%)	
			2020*	2019*	2018	2020/2019	2019/2018
OVERALL INDEX			102.95	106.59	104.86	-3.4	1.6
B	MINING AND QUARRYING		94.59	80.34	94.36	17.7	-14.9
05-06-09	Mining of coal and lignite – Extraction of crude petroleum and natural gas – Mining support service activities		29.54	78.49	86.13	-62.4	-8.9
07	Mining of metal ores		137.41	101.09	139.67	35.9	-27.6
08	Other mining and quarrying		89.43	73.48	79.98	21.7	-8.1
C	MANUFACTURING		105.29	107.54	104.31	-2.1	3.1
10	Food		98.61	96.73	96.60	1.9	0.1
11	Beverages		87.49	85.60	88.63	2.2	-3.4
12	Tobacco products		82.47	103.62	68.28	-20.4	51.8
13	Textiles		100.33	107.11	116.68	-6.3	-8.2
14	Wearing apparel		76.22	84.06	90.19	-9.3	-6.8
15	Leather and related products		120.82	138.71	146.71	-12.9	-5.5
16	Wood and products of wood and cork, except furniture		108.09	93.12	99.51	16.1	-6.4
17	Paper and paper products		105.04	104.92	111.50	0.1	-5.9
18	Printing and reproduction of recorded products		98.64	102.34	95.69	-3.6	6.9
19	Coke and refined petroleum products		94.95	113.33	116.58	-16.2	-2.8
20	Chemicals and chemical products		129.20	126.03	122.89	2.5	2.5
21	Basic pharmaceutical products and pharmaceutical preparations		169.11	147.97	129.63	14.3	14.1
22	Rubber and plastic products		114.00	117.27	110.24	-2.8	6.4
23	Other non-metallic mineral products		99.63	98.96	105.58	0.7	-6.3
24	Basic metals		124.05	129.70	114.71	-4.4	13.1
25	Fabricated metal products, except machinery and equipment		110.60	120.36	114.21	-8.1	5.4
26	Computers, electronic and optical products		160.17	144.77	87.33	10.6	65.8
27	Electrical equipment		99.21	101.45	100.75	-2.2	0.7
28	Machinery and equipment n. e. c.		110.44	102.96	90.45	7.3	13.8
29	Motor vehicles, trailers and semi-trailers		77.49	73.44	79.51	5.5	-7.6
30	Other transport equipment		43.37	33.93	39.73	27.8	-14.6
31	Furniture		105.07	95.19	96.46	10.4	-1.3
32	Other manufacturing		103.33	105.85	88.94	-2.4	19.0
33	Repair and installation of machinery and equipment		87.13	82.83	76.47	5.2	8.3
D	ELECTRICITY SUPPLY		98.33	109.21	110.67	-10.0	-1.3
35	Electricity supply		98.33	109.21	110.67	-10.0	-1.3
E	WATER SUPPLY		88.99	89.95	88.94	-1.1	1.1
36	Water collection, treatment and supply		88.99	89.95	88.94	-1.1	1.1
MAIN INDUSTRIAL GROUPINGS							
1	Energy		96.21	108.50	110.29	-11.3	-1.6
2	Intermediate goods		108.43	107.63	107.99	0.7	-0.3
3	Capital goods		107.55	104.93	90.75	2.5	15.6
4	Consumer Durables		93.82	88.45	94.09	6.1	-6.0
5	Consumer Non-Durables		106.10	104.81	100.15	1.2	4.7

* Provisional data

Note: The indices are rounded up to two decimal digits when published and percentage changes up to one decimal digit when published.

Table 2. Average indices of the period January – February and rates of change (%) of the Industrial Production Index
(Working day adjusted data, according to the real number of working days)

Base year: 2015=100.0

Code		Division	Average indices of the period Jan.-Feb.			Rate of change (%)	
			2020*	2019*	2018	2020/2019	2019/2018
OVERALL INDEX			102.21	104.55	101.79	-2.2	2.7
B	MINING AND QUARRYING		85.41	70.38	86.56	21.4	-18.7
05-06-09	Mining of coal and lignite – Extraction of crude petroleum and natural gas – Mining support service activities		31.88	54.89	63.29	-41.9	-13.3
07	Mining of metal ores		129.07	95.91	133.52	34.6	-28.2
08	Other mining and quarrying		78.26	63.87	73.82	22.5	-13.5
C	MANUFACTURING		102.34	101.52	100.50	0.8	1.0
10	Food		98.19	93.97	95.72	4.5	-1.8
11	Beverages		80.77	75.91	78.89	6.4	-3.8
12	Tobacco products		88.08	107.01	72.35	-17.7	47.9
13	Textiles		97.52	98.46	109.29	-1.0	-9.9
14	Wearing apparel		73.99	81.54	88.11	-9.3	-7.5
15	Leather and related products		99.02	110.33	115.92	-10.3	-4.8
16	Wood and products of wood and cork, except furniture		95.95	79.39	84.80	20.9	-6.4
17	Paper and paper products		104.43	102.28	106.53	2.1	-4.0
18	Printing and reproduction of recorded products		99.81	94.96	91.89	5.1	3.3
19	Coke and refined petroleum products		99.64	111.73	117.38	-10.8	-4.8
20	Chemicals and chemical products		121.23	116.52	110.22	4.0	5.7
21	Basic pharmaceutical products and pharmaceutical preparations		156.06	142.76	118.63	9.3	20.3
22	Rubber and plastic products		109.60	112.02	106.12	-2.2	5.6
23	Other non-metallic mineral products		96.97	89.95	101.18	7.8	-11.1
24	Basic metals		122.82	128.43	117.08	-4.4	9.7
25	Fabricated metal products, except machinery and equipment		106.44	105.40	102.63	1.0	2.7
26	Computers, electronic and optical products		144.57	124.18	88.77	16.4	39.9
27	Electrical equipment		90.37	87.48	95.50	3.3	-8.4
28	Machinery and equipment n. e. c.		95.00	88.33	83.88	7.6	5.3
29	Motor vehicles, trailers and semi-trailers		65.88	60.95	81.30	8.1	-25.0
30	Other transport equipment		35.13	31.99	41.48	9.8	-22.9
31	Furniture		92.97	78.52	79.53	18.4	-1.3
32	Other manufacturing		92.66	94.36	91.21	-1.8	3.5
33	Repair and installation of machinery and equipment		78.94	72.63	73.81	8.7	-1.6
D	ELECTRICITY SUPPLY		105.89	121.32	110.15	-12.7	10.1
35	Electricity supply		105.89	121.32	110.15	-12.7	10.1
E	WATER SUPPLY		89.27	89.95	88.75	-0.8	1.4
36	Water collection, treatment and supply		89.27	89.95	88.75	-0.8	1.4
MAIN INDUSTRIAL GROUPINGS							
1	Energy		102.14	115.02	110.21	-11.2	4.4
2	Intermediate goods		103.94	100.74	103.24	3.2	-2.4
3	Capital goods		98.28	90.72	84.67	8.3	7.1
4	Consumer Durables		83.69	75.27	81.57	11.2	-7.7
5	Consumer Non-Durables		102.91	100.00	96.02	2.9	4.1

* Provisional data

Note: The indices are rounded up to two decimal digits when published and percentage changes up to one decimal digit when published.

Table 3. Monthly rate of change of the Industrial Production Index*(Working day adjusted data, according to the real number of working days)***Base year: 2015=100.0**

Code	Division	February 2020*	January 2020**	Rate of change (%) Feb. 2020 / Jan. 2020
OVERALL INDEX		102.95	101.46	1.5
B	MINING AND QUARRYING	94.59	76.22	24.1
05-06-09	Mining of coal and lignite – Extraction of crude petroleum and natural gas – Mining support service activities	29.54	34.23	-13.7
07	Mining of metal ores	137.41	120.73	13.8
08	Other mining and quarrying	89.43	67.08	33.3
C	MANUFACTURING	105.29	99.39	5.9
10	Food	98.61	97.77	0.9
11	Beverages	87.49	74.04	18.2
12	Tobacco products	82.47	93.68	-12.0
13	Textiles	100.33	94.72	5.9
14	Wearing apparel	76.22	71.77	6.2
15	Leather and related products	120.82	77.22	56.5
16	Wood and products of wood and cork, except furniture	108.09	83.82	29.0
17	Paper and paper products	105.04	103.82	1.2
18	Printing and reproduction of recorded products	98.64	100.98	-2.3
19	Coke and refined petroleum products	94.95	104.32	-9.0
20	Chemicals and chemical products	129.20	113.25	14.1
21	Basic pharmaceutical products and pharmaceutical preparations	169.11	143.01	18.2
22	Rubber and plastic products	114.00	105.19	8.4
23	Other non-metallic mineral products	99.63	94.31	5.6
24	Basic metals	124.05	121.59	2.0
25	Fabricated metal products, except machinery and equipment	110.60	102.27	8.2
26	Computers, electronic and optical products	160.17	128.98	24.2
27	Electrical equipment	99.21	81.53	21.7
28	Machinery and equipment n. e. c.	110.44	79.56	38.8
29	Motor vehicles, trailers and semi-trailers	77.49	54.27	42.8
30	Other transport equipment	43.37	26.89	61.3
31	Furniture	105.07	80.88	29.9
32	Other manufacturing	103.33	82.00	26.0
33	Repair and installation of machinery and equipment	87.13	70.75	23.2
D	ELECTRICITY SUPPLY	98.33	113.46	-13.3
35	Electricity supply	98.33	113.46	-13.3
E	WATER SUPPLY	88.99	89.56	-0.6
36	Water collection, treatment and supply	88.99	89.56	-0.6
MAIN INDUSTRIAL GROUPINGS				
1	Energy	96.21	108.06	-11.0
2	Intermediate goods	108.43	99.46	9.0
3	Capital goods	107.55	89.00	20.8
4	Consumer Durables	93.82	73.55	27.6
5	Consumer Non-Durables	106.10	99.72	6.4

* Provisional data **Revised data

Note: The indices are rounded up to two decimal digits when published and percentage changes up to one decimal digit when published.

Table 4. Monthly rate of change of the seasonally adjusted Industrial Production Index

Base year: 2015=100.0

Code	Division	February 2020	January 2020	Rate of change (%) Feb. 2020 / Jan. 2020
OVERALL INDEX		105.92	109.90	-3.6
B	MINING AND QUARRYING	104.16	104.86	-0.7
05-06-09	Mining of coal and lignite – Extraction of crude petroleum and natural gas – Mining support service activities	-	-	-
07	Mining of metal ores	145.17	145.64	-0.3
08	Other mining and quarrying	106.97	101.43	5.5
C	MANUFACTURING	109.33	113.43	-3.6
10	Food	104.97	107.90	-2.7
11	Beverages	100.67	104.79	-3.9
12	Tobacco products	88.03	103.76	-15.2
13	Textiles	101.24	104.30	-2.9
14	Wearing apparel	83.03	84.27	-1.5
15	Leather and related products	96.25	99.07	-2.8
16	Wood and products of wood and cork, except furniture	118.88	127.21	-6.6
17	Paper and paper products	101.87	105.94	-3.8
18	Printing and reproduction of recorded products	101.04	117.25	-13.8
19	Coke and refined petroleum products	92.97	104.90	-11.4
20	Chemicals and chemical products	125.86	130.49	-3.5
21	Basic pharmaceutical products and pharmaceutical preparations	169.24	160.36	5.5
22	Rubber and plastic products	110.63	112.03	-1.2
23	Other non-metallic mineral products	110.49	121.80	-9.3
24	Basic metals	122.42	125.77	-2.7
25	Fabricated metal products, except machinery and equipment	116.55	128.77	-9.5
26	Computers, electronic and optical products	166.75	162.33	2.7
27	Electrical equipment	100.15	99.97	0.2
28	Machinery and equipment n. e. c.	115.05	116.19	-1.0
29	Motor vehicles, trailers and semi-trailers	89.34	100.96	-11.5
30	Other transport equipment	64.67	51.52	25.5
31	Furniture	128.80	141.60	-9.0
32	Other manufacturing	112.67	103.67	8.7
33	Repair and installation of machinery and equipment	96.39	96.94	-0.6
D	ELECTRICITY SUPPLY	95.59	103.80	-7.9
35	Electricity supply	95.59	103.80	-7.9
E	WATER SUPPLY	96.14	97.47	-1.4
36	Water collection, treatment and supply	96.14	97.47	-1.4
MAIN INDUSTRIAL GROUPINGS				
1	Energy	95.56	100.82	-5.2
2	Intermediate goods	110.85	114.43	-3.1
3	Capital goods	116.42	121.10	-3.9
4	Consumer Durables	109.57	115.51	-5.1
5	Consumer Non-Durables	111.65	114.13	-2.2

Notes:

1. The indices are rounded up to two decimal digits when published and percentage changes up to one decimal digit when published.
2. The whole time-series with seasonally adjusted indices is recalculated every time a new observation is added in the time-series.
3. The composed index of divisions 05-06-09 is not seasonally adjusted, due to the fact that it is calculated from January 2015 and thus the number of observations is not adequate.

Table 5. Evolution of the Overall Industrial Production Index

(Working day adjusted data, according to the real number of working days)

Base year: 2015=100.0

Year and month	Overall Index	Monthly rate of change (%)	Annual rate of change (%)	12-month average index (moving average)	Rate of change of the 12-month average index (%)
2018: 1	98.71	-7.7	-0.4	106.50	3.4
2	104.86	6.2	-0.7	106.44	2.5
3	109.14	4.1	0.8	106.52	1.9
4	105.08	-3.7	3.2	106.79	2.2
5	108.56	3.3	1.0	106.88	1.8
6	112.90	4.0	1.3	107.00	1.5
7	120.86	7.0	3.5	107.34	1.6
8	104.96	-13.2	-0.3	107.32	1.2
9	110.95	5.7	3.3	107.62	1.3
10	105.16	-5.2	0.004	107.62	1.2
11	108.75	3.4	5.2	108.07	1.5
12	109.38	0.6	2.3	108.28	1.6
Annual average	108.28				
2019*: 1	102.52	-6.3	3.9	108.59	2.0
2	106.59	4.0	1.6	108.74	2.2
3	108.46	1.8	-0.6	108.68	2.0
4	107.51	-0.9	2.3	108.88	2.0
5	107.86	0.3	-0.6	108.82	1.8
6	112.34	4.1	-0.5	108.78	1.7
7	118.38	5.4	-2.1	108.57	1.1
8	104.97	-11.3	0.01	108.57	1.2
9	112.89	7.5	1.8	108.73	1.0
10	104.20	-7.7	-0.9	108.65	1.0
11	98.30	-5.7	-9.6	107.78	-0.3
12	104.79	6.6	-4.2	107.40	-0.8
Annual average	107.40				
2020*: 1	101.46	-3.2	-1.0	107.31	-1.2
2	102.95	1.5	-3.4	107.01	-1.6

* Provisional data

Note: The indices are rounded up to two decimal digits when published and percentage changes up to one decimal digit when published.

Table 6. Monthly evolution of the seasonally adjusted Overall Industrial Production Index and Main Industrial Groupings

Base year: 2015=100.0

Year and month		Overall Index		Energy		Intermediate goods		Capital goods		Consumer durables		Consumer non-durables	
		Index	Monthly rate of change (%)	Index	Monthly rate of change (%)	Index	Monthly rate of change (%)	Index	Monthly rate of change (%)	Index	Monthly rate of change (%)	Index	Monthly rate of change (%)
2018:	1	107.13	-1.0	103.49	-3.8	113.01	0.7	111.13	10.6	110.77	-2.0	105.72	-1.8
	2	107.76	0.6	109.44	5.7	110.78	-2.0	100.15	-9.9	108.42	-2.1	105.35	-0.3
	3	108.39	0.6	113.94	4.1	108.15	-2.4	102.28	2.1	105.57	-2.6	103.62	-1.6
	4	106.73	-1.5	107.77	-5.4	110.98	2.6	110.32	7.9	107.09	1.4	101.22	-2.3
	5	107.76	1.0	109.56	1.7	109.73	-1.1	106.07	-3.9	106.53	-0.5	104.55	3.3
	6	107.28	-0.4	107.60	-1.8	109.78	0.04	103.56	-2.4	109.38	2.7	105.84	1.2
	7	109.26	1.8	106.66	-0.9	113.94	3.8	106.59	2.9	101.93	-6.8	109.85	3.8
	8	108.01	-1.1	109.34	2.5	113.88	-0.04	105.63	-0.9	103.35	1.4	102.71	-6.5
	9	108.05	0.04	111.91	2.4	109.94	-3.5	107.71	2.0	99.63	-3.6	102.45	-0.3
	10	107.41	-0.6	108.04	-3.5	108.50	-1.3	104.34	-3.1	100.44	0.8	106.96	4.4
	11	112.67	4.9	112.46	4.1	111.48	2.7	110.24	5.7	98.55	-1.9	115.19	7.7
	12	110.44	-2.0	111.46	-0.9	108.88	-2.3	107.19	-2.8	105.79	7.4	111.51	-3.2
Annual average		108.41		109.31		110.75		106.27		104.79		106.25	
2019:	1	110.00	-0.4	113.68	2.0	107.46	-1.3	105.88	-1.2	98.69	-6.7	109.19	-2.1
	2	109.39	-0.6	107.71	-5.2	109.74	2.1	114.10	7.8	102.67	4.0	110.24	1.0
	3	107.70	-1.5	100.97	-6.3	112.47	2.5	112.66	-1.3	99.50	-3.1	111.23	0.9
	4	108.59	0.8	103.77	2.8	112.43	-0.04	109.66	-2.7	105.82	6.4	111.29	0.1
	5	106.35	-2.1	98.97	-4.6	110.20	-2.0	109.24	-0.4	105.76	-0.1	111.56	0.2
	6	107.43	1.0	105.14	6.2	109.36	-0.8	110.64	1.3	105.47	-0.3	107.94	-3.2
	7	106.86	-0.5	101.77	-3.2	108.60	-0.7	111.26	0.6	110.43	4.7	110.31	2.2
	8	108.14	1.2	108.06	6.2	107.91	-0.6	111.32	0.1	102.89	-6.8	107.84	-2.2
	9	109.46	1.2	102.84	-4.8	111.45	3.3	116.03	4.2	108.73	5.7	114.20	5.9
	10	106.62	-2.6	98.74	-4.0	111.15	-0.3	114.60	-1.2	110.13	1.3	110.34	-3.4
	11	102.32	-4.0	90.68	-8.2	108.15	-2.7	110.81	-3.3	114.55	4.0	108.98	-1.2
	12	105.79	3.4	95.34	5.1	109.51	1.2	115.69	4.4	106.33	-7.2	112.88	3.6
Annual average		107.39		102.31		109.87		111.83		105.91		110.50	
2020:	1	109.90	3.9	100.82	5.7	114.43	4.5	121.10	4.7	115.51	8.6	114.13	1.1
	2	105.92	-3.6	95.56	-5.2	110.85	-3.1	116.42	-3.9	109.57	-5.1	111.65	-2.2

Notes:

1. The indices are rounded up to two decimal digits when published and percentage changes up to one decimal digit when published.
2. The whole time-series with seasonally adjusted indices is recalculated every time a new observation is added in the time-series.

METHODOLOGICAL NOTES

Generally	The Industrial Production Index (IPI) in Greece has been compiled by the Hellenic Statistical Authority (ELSTAT) from 1959 onwards.
Purpose of the index	The objective of the index is to compare the magnitude (volume) of the output in the current month in the mining and quarrying, manufacturing, electricity and water supply divisions with the corresponding output of a given fixed period, which is considered as base period. The Industrial Production Index shows the evolution of the value added of the production factors cost, at constant prices.
Legal framework	The compilation of the IPI is governed by Council Regulation (EC) No 1165/1998 concerning short-term statistics. Furthermore, the IPI is governed by Regulation (EC) No 1893/2006 of the European Parliament and of the Council, by Commission Regulation (EC) No 656/2007 and by Council Regulation (EC) No 451/2008.
Reference period	Month.
Base year	2015=100.0.
Revision	The IPI is a fixed base index. The Industrial Production Index was currently revised with new base year 2015 (2015=100.0) according to the provisions of Council Regulation No 1165/1998 concerning short-term statistics. Short-term indices are revised every five (5) years, particularly in calendar years ending in 0 or 5.
Statistical classifications	At the level of branches of economic activities, the statistical classification of economic activities NACE Rev.2 of EU was used (Regulation No 1893/2006), while at the level of main industrial groupings, the allocation of two-digit and three-digit NACE Rev. 2 headings to categories of aggregate classification was used, in accordance with Council Regulation No 656/2007. At product level, the statistical classification CPA 2008 of EU was used, according to Council Regulation No 451/2008.
Geographical coverage	The index covers the whole Country.
Coverage of economic activities	The index covers all the sections of industry, the main industrial groups, as well as all levels of economic activity.
Statistical survey	The data are collected from a sample of 1,263 enterprises. The survey covers 325 products and the measurement of the surveyed products is made in terms of output quantities or in terms of production value or turnover, according to the specific features in each branch of economic activity.
Seasonal adjustment	Seasonal adjustment is the procedure followed to remove the impact of seasonality on the time-series (i.e. the impact of monthly effects, e.g. holidays, tourist period etc.), in order to improve comparability over time. The method applied is TRAMO-SEATS with the use of JDemetra+ 2.0.0. For the seasonal adjustment of the Industrial Production Index at 2-digit level of NACE Rev.2, at section level (B – Mining and Quarrying, C – Manufacturing, D – Electricity and E – Water Supply) and for the Main Industrial Groupings (MIGs), the direct approach is applied, namely each time-series is seasonally adjusted independently. For the overall Industrial Production Index, the indirect approach is applied, with the seasonally adjusted IPI being computed by aggregating the seasonally adjusted MIGs using appropriate weights.
Publication of data	The revised IPI with the new base year 2015 (2015=100.0) is released since July 2019, with May 2019 as the first reference month. Data with base year 2015=100.0 are available from January 2000 onwards.
References	More information about the methodology concerning the compilation and calculation of the index and for the time series is available on the website of the Hellenic Statistical Authority (ELSTAT) (http://www.statistics.gr/en/statistics/-/publication/DKT21/).