



HOSPITAL CENSUS 2023

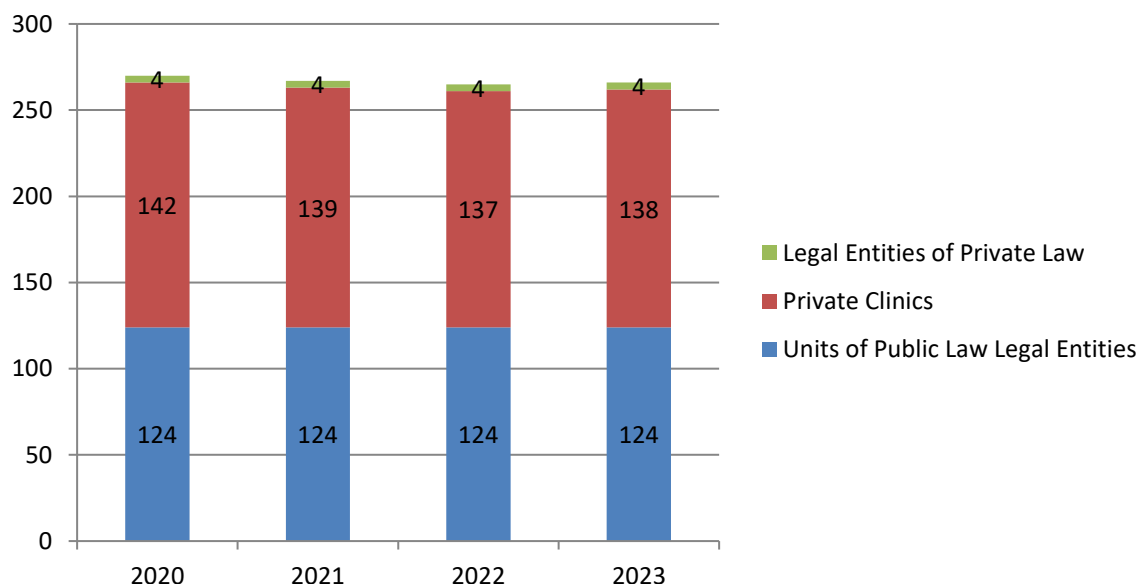
The Hellenic Statistical Authority (ELSTAT) announces the data of the annual exhaustive survey on hospitals for the year 2023. According to the census results, the number of hospitals amounts to 266 units in 2023 from 265 units in 2022 (an increase of 0.4%).

In the year 2023, the largest percentage (51.9%) of hospitals were private (Table 1, Graph 1).

Table 1. Hospitals by legal status and category for the years 2020-2023

Year	Legal Entities of Private Law	Units of Public Law Legal Entities	Private clinics	Total	General	Specialized	Mixed Specialties
2020	4	124	142	270	172	85	13
2021	4	124	139	267	170	83	14
2022	4	124	137	265	172	84	9
2023	4	124	138	266	175	80	11

Graph 1. Hospitals by legal status for the years 2020 – 2023



Information on methodological issues:

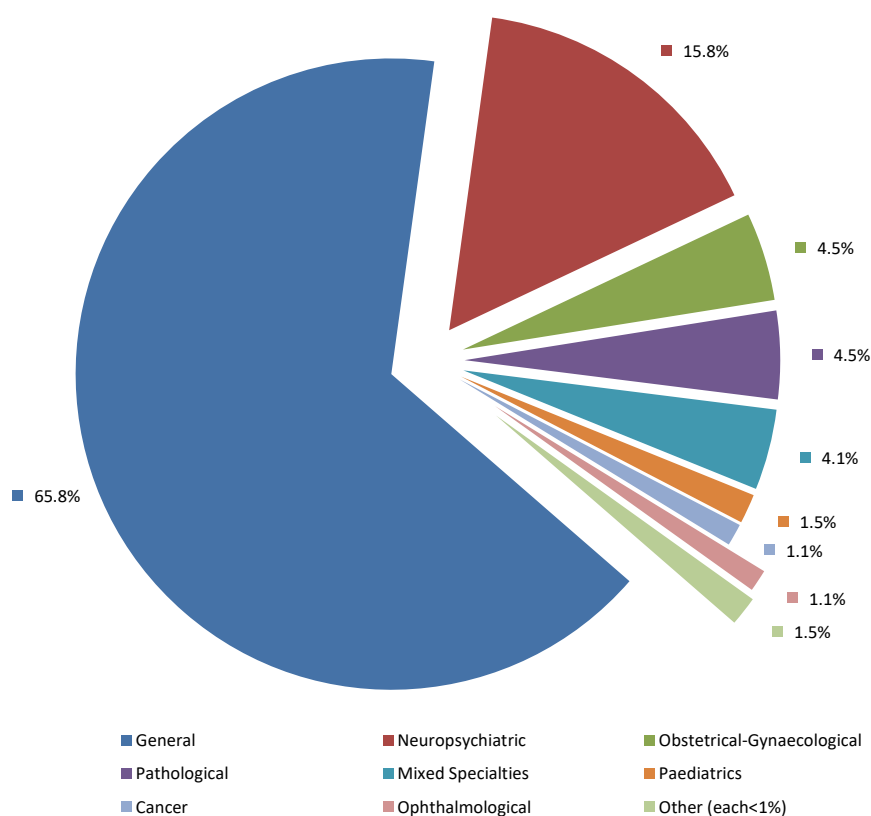
Sectoral Statistics Division
Health and Social Protection Statistics Section
Alexandra Zografou, Kostas Giasafakis
Tel: +30 213 135 2785, 2136

Information for data provision:

Tel. +30 213 135 2022, 2310, 2308
e-mail: data.dissem@statistics.gr

The number of hospitals during the four-year period 2020-2023 decreased by 1.5%. As regards hospital specialties, in 2023 65.8% of hospitals were General, 30.1% Specialized (Pathological, Neuropsychiatric, Anti-cancer, Ophthalmological, Obstetrical-Gynaecological, Paediatric and other specialties) and 4.1% were Mixed Specialty hospitals. The largest percentage of specialized hospitals were Neuropsychiatric (15.8%) followed by Obstetric-Gynaecological and Pathological both same percentage (4.5%) (Table 1, Graph 2).

Graph 2. Hospitals by specialty, year 2023

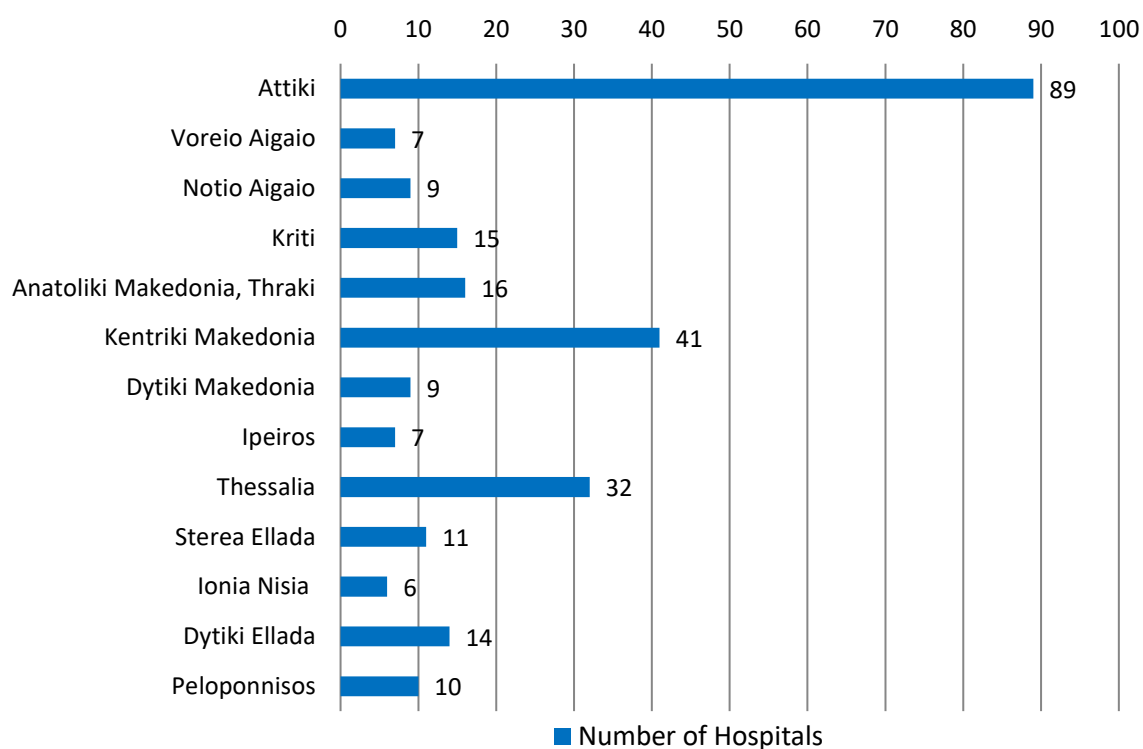


As regards the percentage distribution of hospitals in the 13 Regions of Greece, in the year 2023 most hospitals (33.5%) were in the Region of Attiki, followed by the Region of Kentriki Makedonia (15.4%) and Thessalia (12.0%). The smallest percentage of hospitals was recorded in the Regions of Ionia Nisia, Ipeiros and Voreio Aigaio, where the total number of hospitals in the three aforementioned Regions corresponds to 7.5% of the total number of hospitals in Greece (Table 2, Graph 3).

Table 2. Hospitals by Region (NUTS 2) for the years 2020-2023

REGIONS	2020	2021	2022	2023	Percentage (%) distribution 2023
TOTAL	270	267	265	266	100.0
Attiki	91	90	89	89	33.5
Voreio Aigaio	7	7	7	7	2.6
Notio Aigaio	9	9	9	9	3.4
Kriti	15	15	15	15	5.6
Anatoliki Makedonia, Thraki	17	16	16	16	6.0
Kentriki Makedonia	43	42	41	41	15.4
Dytiki Makedonia	9	9	9	9	3.4
Ipeiros	7	7	7	7	2.6
Thessalia	32	32	31	32	12.0
Stereia Ellada	10	10	11	11	4.1
Ionia Nisia	6	6	6	6	2.3
Dytiki Ellada	14	14	14	14	5.3
Peloponnisos	10	10	10	10	3.8

Graph 3. Hospitals by Region (NUTS 2), year 2023



The number of available in-patient beds in the period 2020-2023 decreased by 788 beds (1.8%). In the year 2023 compared to 2022 the decrease was 335 beds (0.8%). The number of day-care beds during the period 2020-2023 increased by 380 (9.7%). In the year 2023 compared to 2022, the increase was 292 beds (7.2%) (Table 3).

Table 3. Number of hospital beds for the years 2020-2023

Year	In-patient beds	Day-care beds	Total beds
2020	44,921	3,904	48,825
2021	44,794	3,794	48,588
2022	44,468	3,992	48,460
2023	44,133	4,284	48,417

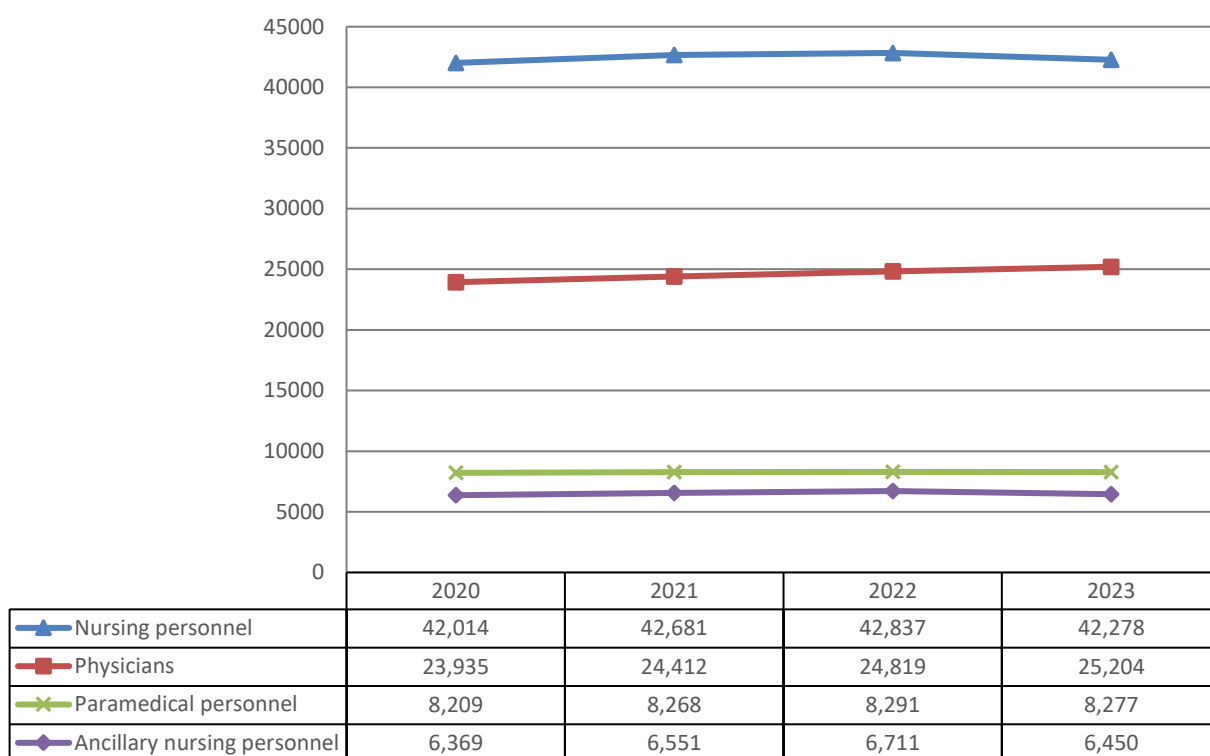
In 2023 the largest percentage of beds (67.8%) belonged to hospitals with Public Law legal status followed by Private Clinics (30.2%) (Table 4).

Table 4. Number of hospital beds by legal status of hospitals, year 2023

Legal Status	In-patient beds	Day-care beds	Total Beds	Percentage (%) Distribution
Public Law Legal Entities	29,359	3,468	32,827	67.8
Private Law Legal Entities	837	138	975	2.0
Private clinics	13,937	678	14,615	30.2
Total	44,133	4,284	48,417	100.0

In the four-year period 2020-2023, a total increase of 5.3% was recorded in the number of medical personnel employed in the hospitals under permanent employment status (full time), while in 2023 compared to 2022 the increase was 1.6% (Graph 4). Additionally at the end of the four-year period 2020-2023 the nursing personnel increased by 0.6%, the paramedical personnel (medical laboratory technologists & assistants, radiological technologists & assistants, physiotherapists, occupational & speech therapists) by 0.8% and the ancillary nursing staff (paramedics, chamber assistants, other auxiliary specialties, etc.) by 1.3 %.

Graph 4. Hospital personnel by personnel category for the years 2020-2023



According to the data in Table 5, in 2023 the largest percentage of nursing (56.5%) and ancillary (9.9%) personnel offered services in Private Clinics. The largest percentage of medical (32.2%) and paramedical (10.2%) personnel served in Public Law Legal Entities.

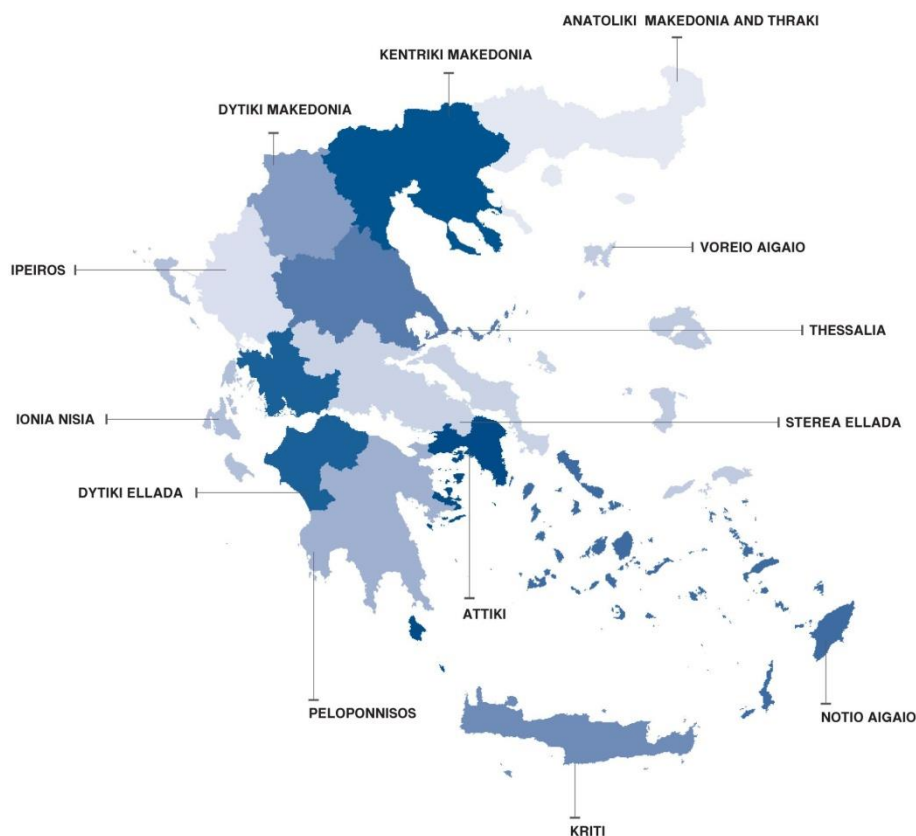
Table 5. Hospital Personnel by legal status of hospital, year 2023

Hospital Personnel	Total	Percentage % Distribution	Units of Public Law Legal Entities	Percentage % Distribution	Units of Private Law Legal Entities	Percentage % Distribution	Private Clinics	Percentage % Distribution
Nursing	42,278	51.4	32,480	50.3	1,062	50.5	8,736	56.5
Medical	25,204	30.7	20,836	32.2	648	30.8	3,720	24.0
Paramedical	8,277	10.1	6,581	10.2	205	9.8	1,491	9.6
Ancillary	6,450	7.8	4,729	7.3	188	8.9	1,533	9.9
Total	82,209	100.0	64,626	100.0	2,103	100.0	15,480	100.0

*Any differences in percentages are due to rounding

EXPLANATORY NOTES

- Hospital Census:** The Hospital Census is conducted on a yearly basis since 1962, aiming at covering national needs in statistical information.
- Reference period:** The data refer to the hospitals and clinics on the 31st of December of the reference year.
- Coverage:** In the Hospital Census data are collected from all hospitals in the country and they are presented at Country level and by Region.



Legal basis: Common Ministerial Decision 26262/128/59.

Definition of basic variables:

Bed capacity: Bed capacity is distinguished in the Legal Bed Capacity (on the basis of the Organization of the Hospital or the operation license of the clinic) and the Available Beds, which are the number of beds available for hospitalization. There are in-patient hospitalization beds and day-care beds. In addition, the beds are presented by sector of the hospital, namely Pathological, Surgical, Psychiatric or cross-sectoral.

Medical personnel by specialty. The medical specialties of the personnel are as follows: Hematologists, Radiotherapists, Radiologists, Allergists, Anaesthesiologists, Gastroenterologists, Endocrinologists, Coroners, General Pathologists, Dermatologists, Venereologists, Public Health and Social Medicine specialists, Occupational Health specialists, Cardiologists, Cytologists, Obstetricians-Gynaecologists, Biopathologists, Neurologists, Neurosurgeons, Dentists, Orthopedics, Urologists, Ophthalmologists, Pathologists, Internists, Pediatricians, Child Psychiatrists, Nuclear Physicians, Rheumatologists, Pulmonologists, Surgeons of general surgery, Pediatric surgeons, Plastic surgeons, Psychiatrists, Otolaryngologists, Vascular surgeons, Oral and Maxillofacial, Oncologists, Intensive-care specialists, Emergency-care specialists and Physicians with no specialty.

Methodology: The data are collected from the hospitals and clinics all over Greece. Data are derived from the local units, which fill in a specially designed questionnaire collecting data on the hospital characteristics, (beds, medical and non-medical personnel, medical equipment, etc.). No international classification system is applied.

The exhaustive survey on Hospitals is based on ELSTAT Hospital Register, which is updated annually from data provided by administrative sources for possible changes (new units or abolishment of units, etc). Furthermore, the units (private), which are idle for various reasons e.g. renovation, temporary withdrawal of operating license, etc. are not counted in the total number of hospitals.

It is clarified that a large number of physicians collaborate as external collaborators or freelancers of varying and not fixed working hours, depending on the needs of each clinic, mainly in private clinics, which are not included in the results of this survey.

References: The data of the survey are available to all interested parties through the tables which are posted on the website of ELSTAT at the link [Statistics>Population and Social Conditions>Health>Health Care>Hospitals and local health centres](#). Information that is not available to users through the website can be requested from ELSTAT at the address <http://www.statistics.gr/el/statistical-data-request>