



ISSUING OF MOTOR VEHICLE LICENSES: MAY 2024

The Hellenic Statistical Authority announces that in May 2024, 22,959 road motor cars (both new and used from abroad) were put into circulation for the first time, recording an increase 0.4% compared with the corresponding month of 2023 when the number of road motor cars was 22,877. In May 2023, a 5.6% increase had been observed in comparison with the corresponding month of 2022 (Table 1, Graphs 1,2,3,5). A total number of 14,806 new cars were put into circulation in May 2024 compared with 13,820 in May 2023, recording an increase 7.1%.

The new motorcycles over 50cc (both new and used from abroad) that were put into circulation for the first time in May 2024 amounted to 7,924, against 8,251 in May 2023, thus recording a 4.0% decrease. In May 2023, a 5.6% increase had been observed in comparison with the corresponding month of 2022 (Table 1, Graph 4). Out of the above motorcycles 7,531 were new, while the corresponding figure in May 2023 was 7,853, recording a 4.1% decrease.

During the period January - May 2024, 110,162 road motor cars (both new and used from abroad) were put into circulation for the first time, representing an increase of 7.7% compared to the corresponding period of 2023 when the number of road motor cars was 102,264. During the period January - May 2023 an increase of 13.8% had been observed in comparison with the corresponding period of 2022 (Table 3, Graphs 6,7). Out of the above number of road motor cars that were put into circulation from January to May 2024 68,520 were new, while the corresponding number during the respective period of 2023 was 61,685, recording an increase of 11.1%.

During the period January - May 2024 the circulation of new motorcycles over 50cc (both new and used from abroad) amounted to 31,159 against 26,790 in the respective period of 2023, thus representing a 16.3% increase. An increase of 14.8% had been observed during the period January - May 2023 in comparison with the corresponding period of 2022 (Table 3, Graphs 6,7). A total number of 29,448 new motorcycles were put into circulation, from January to May 2024, compared with 25,289 during the corresponding period of 2023, recording a 16.4% increase.

Information on methodological issues:

Sectoral Statistics Division

Transport Statistics Section

Elpida Kleftogianni, Konstantinos Menexes

Tel: +30 213 135 3087, +30 213 135 3055

e-mail: e.kleftogianni@statistics.gr, k.menexes@statistics.gr

Information for data provision:

Tel: +30 213 135 2022

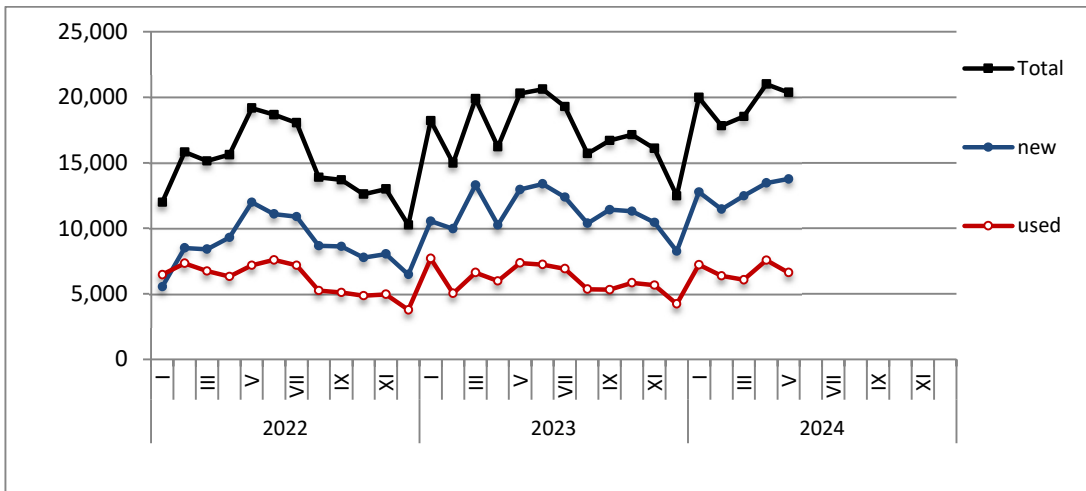
e-mail: data.dissem@statistics.gr

Table 1. Road motor vehicles, both new and used, put into circulation for the first time in Greece: May 2022 - 2024															
Category of Road Motor Vehicles	May									Change (%)					
	2022			2023			2024			2023/2022			2024/2023		
	Total	New	Used	Total	New	Used	Total	New	Used	Total	New	Used	Total	New	Used
Greece, total															
Road Motor Vehicles,total	29,481	20,098	9,383	31,128	21,673	9,455	30,883	22,337	8,546	5.6%	7.8%	0.8%	-0.8%	3.1%	-9.6%
1. Road motor cars	21,665	12,837	8,828	22,877	13,820	9,057	22,959	14,806	8,153	5.6%	7.7%	2.6%	0.4%	7.1%	-10.0%
Passenger Cars	19,163	11,994	7,169	20,303	12,955	7,348	20,363	13,761	6,602	5.9%	8.0%	2.5%	0.3%	6.2%	-10.2%
Buses	128	29	99	133	27	106	398	293	105	3.9%	-6.9%	7.1%	199.2%	985.2%	-0.9%
Lorries	2,374	814	1,560	2,441	838	1,603	2,198	752	1,446	2.8%	2.9%	2.8%	-10.0%	-10.3%	-9.8%
2. Motorcycles > 50 cc	7,816	7,261	555	8,251	7,853	398	7,924	7,531	393	5.6%	8.2%	-28.3%	-4.0%	-4.1%	-1.3%
Prefecture of Attica															
Road Motor Vehicles,total	15,635	11,857	3,778	16,652	12,848	3,804	16,671	13,723	2,948	6.5%	8.4%	0.7%	0.1%	6.8%	-22.5%
1. Road motor cars	12,370	8,714	3,656	13,244	9,564	3,680	13,220	10,349	2,871	7.1%	9.8%	0.7%	-0.2%	8.2%	-22.0%
Passenger Cars	11,354	8,203	3,151	12,256	9,079	3,177	12,236	9,778	2,458	7.9%	10.7%	0.8%	-0.2%	7.7%	-22.6%
Buses	48	14	34	59	11	48	218	168	50	22.9%	-21.4%	41.2%	269.5%	1427.3%	4.2%
Lorries	968	497	471	929	474	455	766	403	363	-4.0%	-4.6%	-3.4%	-17.5%	-15.0%	-20.2%
2. Motorcycles > 50 cc	3,265	3,143	122	3,408	3,284	124	3,451	3,374	77	4.4%	4.5%	1.6%	1.3%	2.7%	-37.9%

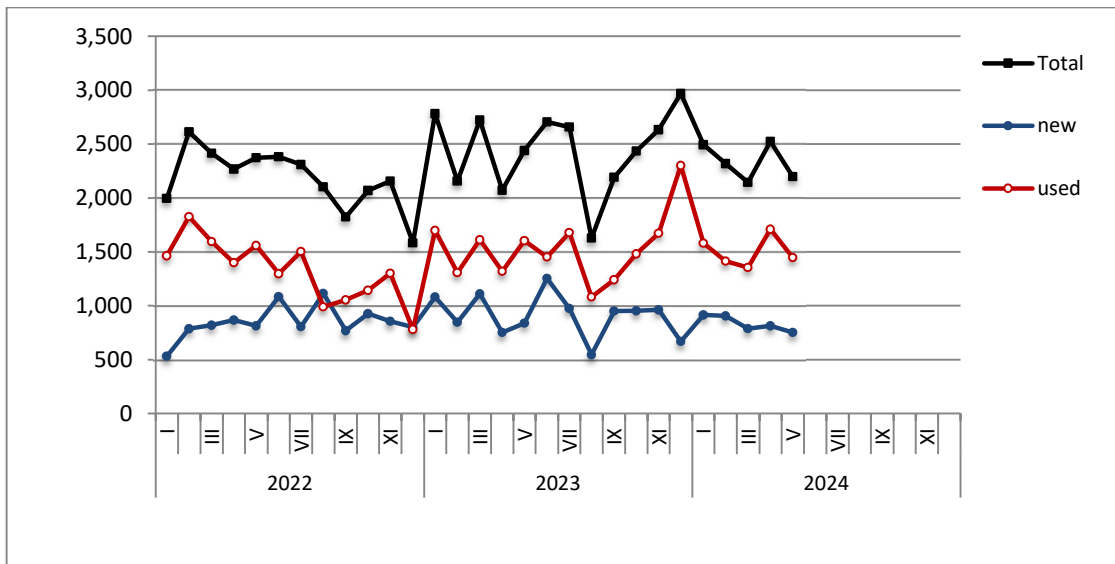
Table 2. Road motor vehicles, both new and used, put into circulation for the first time in Greece: June 2022 – May 2024

Category of Road Motor Vehicles	Average Jun. 2022 - May 2023			Average Jun. 2023 - May 2024			Change (%)		
							Average Jun. 2023 - May 2024 / Average Jun. 2022 - May 2023		
	Total	New	Used	Total	New	Used	Total	New	Used
Greece, total									
Road Motor Vehicles,total	23,406	15,771	7,635	26,652	18,541	8,111	13.9%	17.6%	6.2%
1. Road motor cars	18,127	10,810	7,317	20,502	12,709	7,793	13.1%	17.6%	6.5%
Passenger Cars	15,811	9,871	5,940	17,972	11,784	6,188	13.7%	19.4%	4.2%
Buses	99	23	76	121	51	70	22.2%	121.7%	-7.9%
Lorries	2,217	916	1,301	2,409	874	1,535	8.7%	-4.6%	18.0%
2. Motorcycles > 50 cc	5,279	4,961	318	6,150	5,832	318	16.5%	17.6%	0.0%

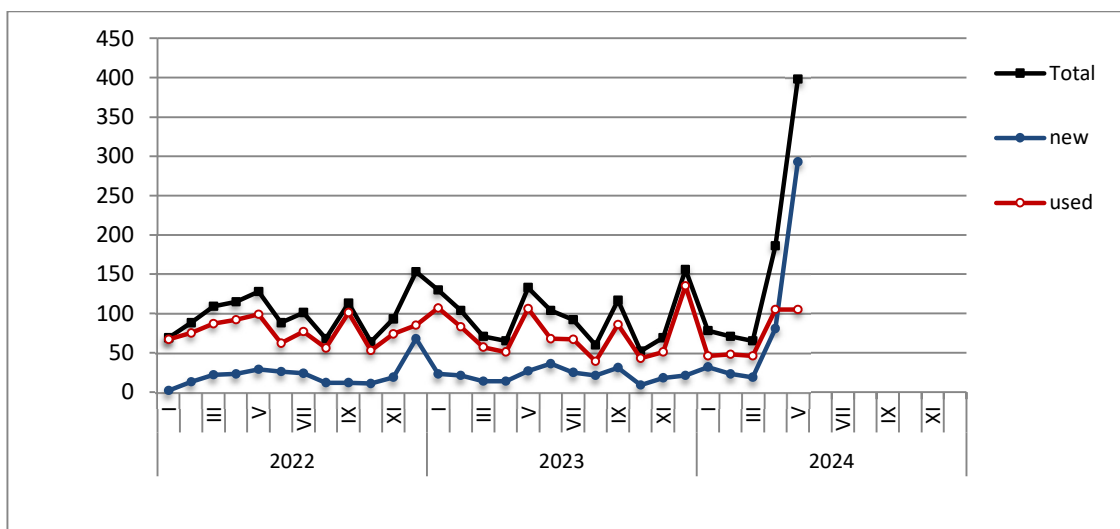
Graph 1: Passenger Cars (January 2022 – May 2024)



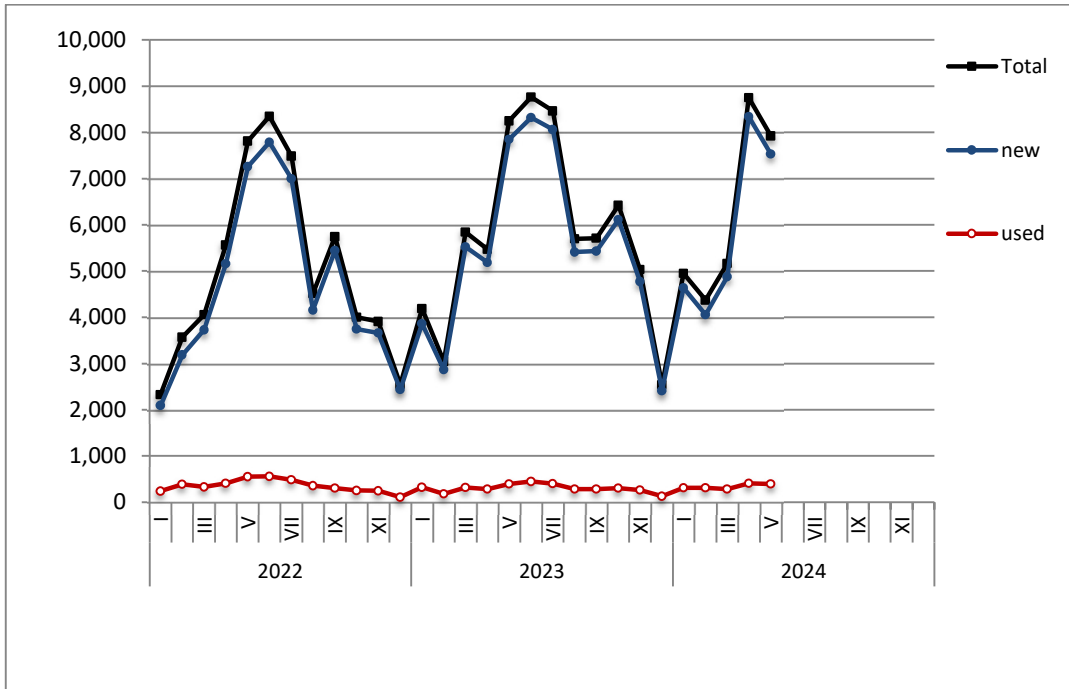
Graph 2: Lorries (January 2022 – May 2024)



Graph 3: Buses (January 2022 – May 2024)



Graph 4: Motorcycles (January 2022 – May 2024)



Graph 5: New Registrations of Motor Vehicles (May 2024)

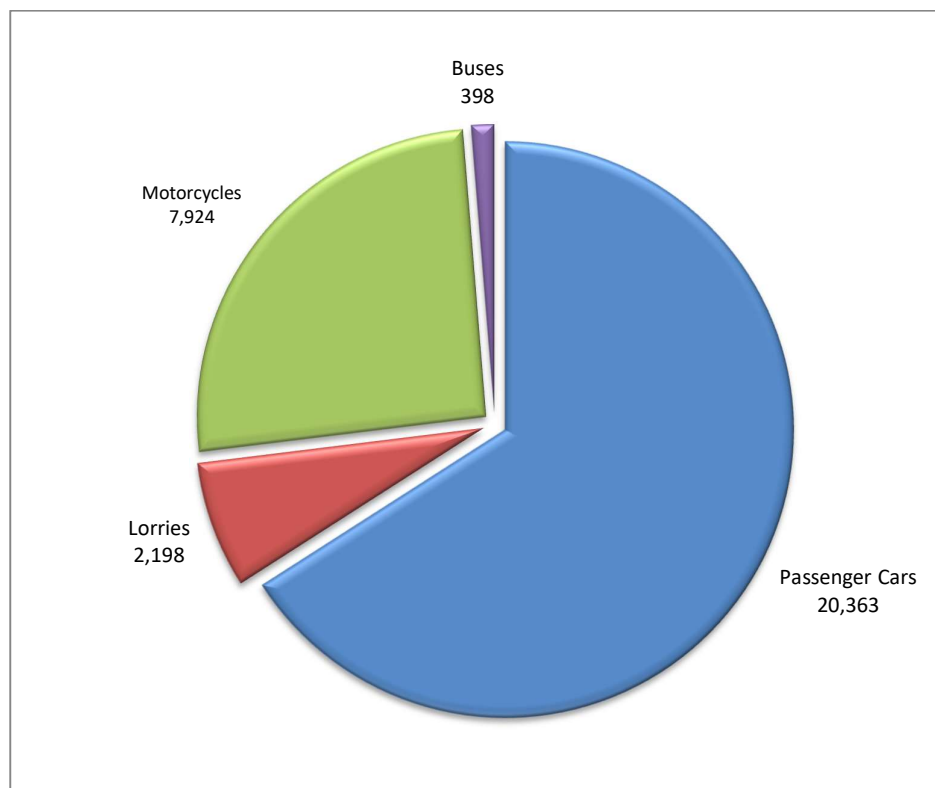
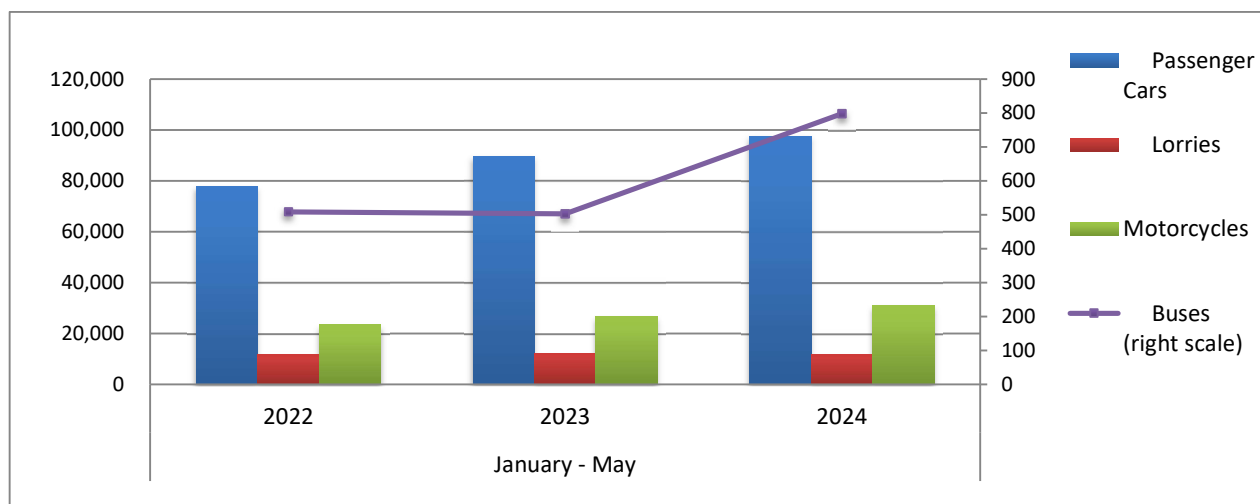


Table 3. Road motor vehicles, both new and used, put into circulation for the first time in Greece: January - May, years 2022 till 2024															
Category of Road Motor Vehicles	January - May									Change (%)					
	2022			2023			2024			2023/2022			2024/2023		
	Total	New	Used	Total	New	Used	Total	New	Used	Total	New	Used	Total	New	Used
Greece, total															
Road Motor Vehicles, total	113,224	69,053	44,171	129,054	86,974	42,080	141,321	97,968	43,353	14.0%	26.0%	-4.7%	9.5%	12.6%	3.0%
1. Road motor cars	89,885	47,633	42,252	102,264	61,685	40,579	110,162	68,520	41,642	13.8%	29.5%	-4.0%	7.7%	11.1%	2.6%
Passenger Cars	77,708	43,725	33,983	89,590	56,955	32,635	97,682	63,897	33,785	15.3%	30.3%	-4.0%	9.0%	12.2%	3.5%
Buses	509	89	420	503	99	404	798	448	350	-1.2%	11.2%	-3.8%	58.6%	352.5%	-13.4%
Lorries	11,668	3,819	7,849	12,171	4,631	7,540	11,682	4,175	7,507	4.3%	21.3%	-3.9%	-4.0%	-9.8%	-0.4%
2. Motorcycles > 50 cc	23,339	21,420	1,919	26,790	25,289	1,501	31,159	29,448	1,711	14.8%	18.1%	-21.8%	16.3%	16.4%	14.0%
Prefecture of Attica															
Road Motor Vehicles, total	59,662	42,421	17,241	72,256	55,123	17,133	77,668	61,173	16,495	21.1%	29.9%	-0.6%	7.5%	11.0%	-3.7%
1. Road motor cars	48,721	32,023	16,698	59,595	42,933	16,662	62,815	46,760	16,055	22.3%	34.1%	-0.2%	5.4%	8.9%	-3.6%
Passenger Cars	43,882	29,573	14,309	54,281	39,947	14,334	57,997	44,101	13,896	23.7%	35.1%	0.2%	6.8%	10.4%	-3.1%
Buses	198	42	156	244	59	185	458	288	170	23.2%	40.5%	18.6%	87.7%	388.1%	-8.1%
Lorries	4,641	2,408	2,233	5,070	2,927	2,143	4,360	2,371	1,989	9.2%	21.6%	-4.0%	-14.0%	-19.0%	-7.2%
2. Motorcycles > 50 cc	10,941	10,398	543	12,661	12,190	471	14,853	14,413	440	15.7%	17.2%	-13.3%	17.3%	18.2%	-6.6%

Graph 6. New Motor Vehicles Circulation Licenses: January – May, years 2022 till 2024



Graph 7. New Registrations of Motor Vehicles: January – May 2024

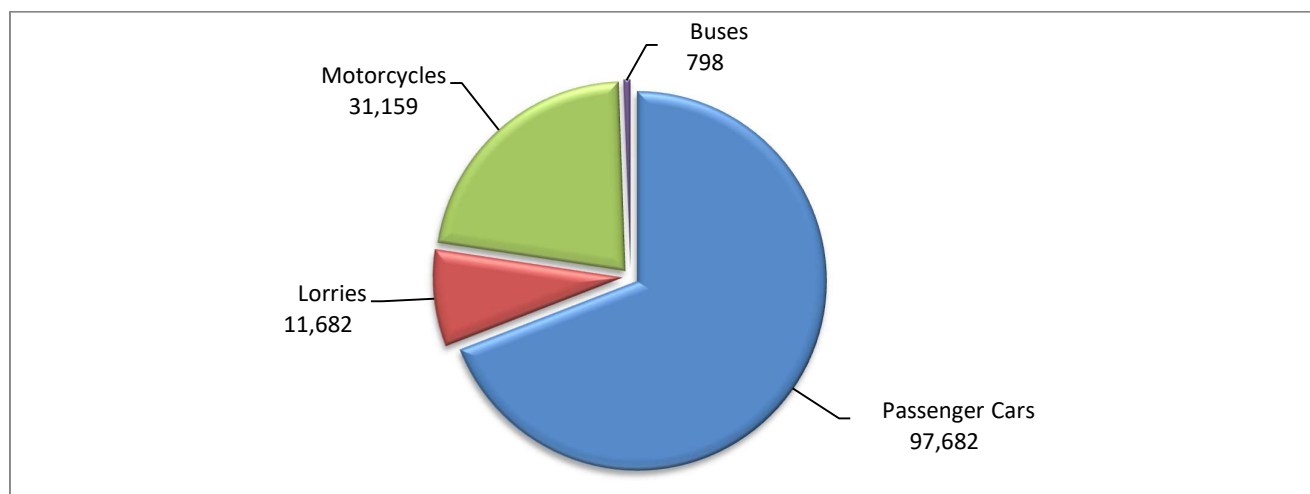


Table 4
Sales of new and used passenger cars by make: May 2024 and January - May 2024

Make	Passenger cars			
	May		January - May	
	new	used	new	used
ABARTH	1	-	3	1
ADRIA	-	1	-	2
ADRIA, SUN LIVING, ELIOS	-	-	2	-
ALFA ROMEO	25	33	137	188
ALPINA	-	-	1	1
AMBULANZ MOBILE	-	1	-	1
ASTON MARTIN	-	1	-	4
AUDI	461	110	1,934	683
BENTLEY	-	3	5	7
BMW	680	203	2,614	1,211
BURSTNER	-	4	-	8
BYD	13	-	38	-
CAPRON	3	1	14	7
CARTHAGO	-	-	1	-
CHEVROLET	-	16	-	59
CITROEN	231	283	1,489	1,230
CITROEN / DS	477	69	3,038	228
CUPRA	70	3	488	15
DACIA	162	146	1,249	791
DAIHATSU	-	1	-	5
DETHLEFFS	-	1	-	5
DODGE	-	1	-	5
DS	61	16	268	50
EURA MOBIL	-	-	1	1
FERRARI	1	1	1	8
FIAT	978	303	3,026	1,448
FORD	211	437	1,438	2,267
FORD ²	-	-	1	-
HOBBY	-	-	-	1
HONDA	39	60	153	283
HYMER	-	1	1	4
HYUNDAI	854	567	4,373	2,895
INEOS	-	-	-	1
INFINITI	-	5	-	27
JAGUAR	8	20	43	104
JEEP	161	43	693	219
KABE	-	-	-	1
KIA	578	123	2,038	667
KNAUS	-	-	-	4
LADA	-	1	-	3
LAMBORGHINI	-	-	-	8
LANCIA	-	1	-	10
LAND ROVER	51	44	282	300
LEXUS	26	5	110	27
LOTUS	2	-	2	1
LYNK&CO	15	2	17	2
MAN	-	-	-	1
MASERATI	2	1	8	15

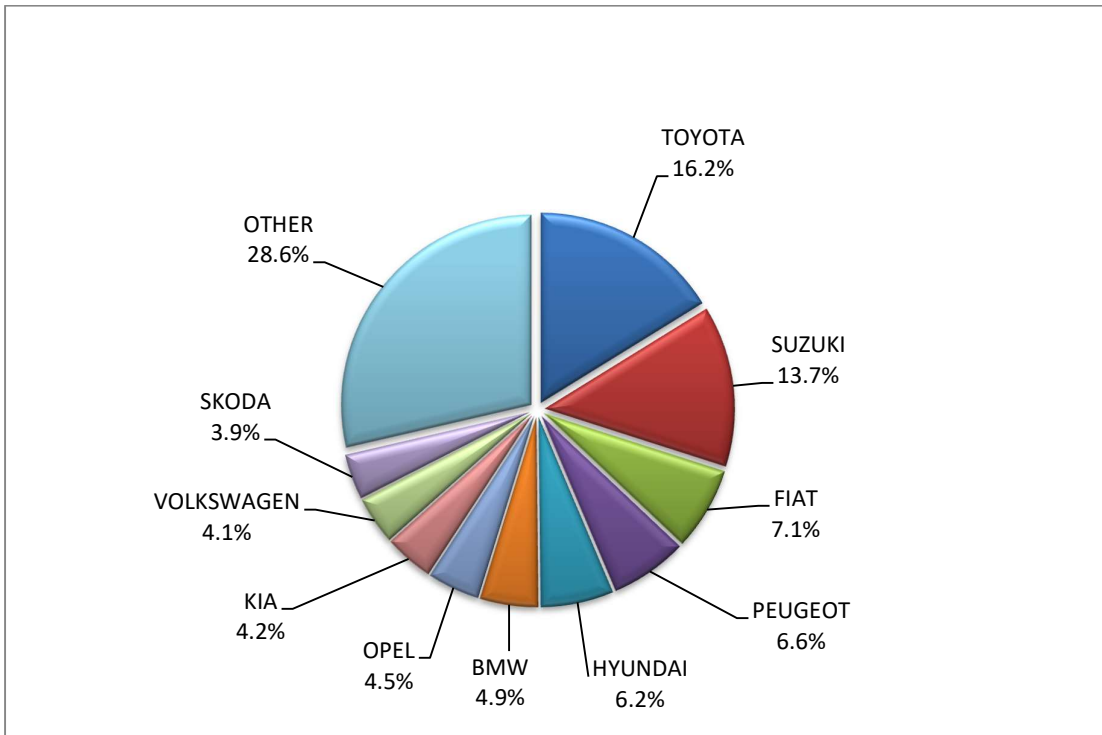
Table 4 (cont)
Sales of new and used passenger cars by make: May 2024 and January - May 2024

Make	Passenger cars			
	May		January - May	
	new	used	new	used
MAXUS, LDV	1	-	4	-
MAZDA	138	19	829	125
MC LOUIS SPA	-	1	-	1
MCLAREN	-	-	-	2
MERCEDES	404	518	1,736	2,683
MERCEDES ¹	-	-	2	-
MG	15	-	103	2
MG, ROEWE	318	4	1,448	14
MINI	155	59	616	276
MITSUBISHI	43	75	211	442
MORRIS	-	-	-	1
NISSAN	149	459	2,177	2,398
NISSAN ¹	-	-	9	-
OPEL	614	439	3,768	2,232
PEUGEOT	907	518	5,457	2,262
PEUGEOT ²	15	-	37	-
PORSCHE	17	35	103	241
RANGE ROVER	13	9	14	22
RENAULT	270	659	1,297	3,339
RENAULT ¹	-	-	1	-
RIMOR	-	1	-	1
ROLLER TEAM	-	-	3	1
SEAT	179	55	723	288
SERES, DFSK, SOKON, AITO	-	-	11	-
SKODA	533	211	2,434	1,028
SMART	7	110	40	610
SSANGYONG	-	2	-	2
SUBARU	-	5	20	34
SUZUKI	1,888	126	5,443	673
TESLA	97	13	775	38
TOYOTA	2,230	493	9,996	2,636
TRIGANO	-	1	-	5
VOLKSWAGEN	562	262	2,642	1,499
VOLVO	96	21	523	132
VOYAH	-	-	1	-
YODO, YUN	-	-	6	-
TOTAL	13,761	6,602	63,897	33,785

1 : With 2nd/3rd stage manufacturer in Greece.

2 : With 2nd/3rd stage manufacturer abroad.

Graph 8. Sales of new passenger cars by make (May 2024)



Graph 9. Sales of new passenger cars by make (January – May 2024)

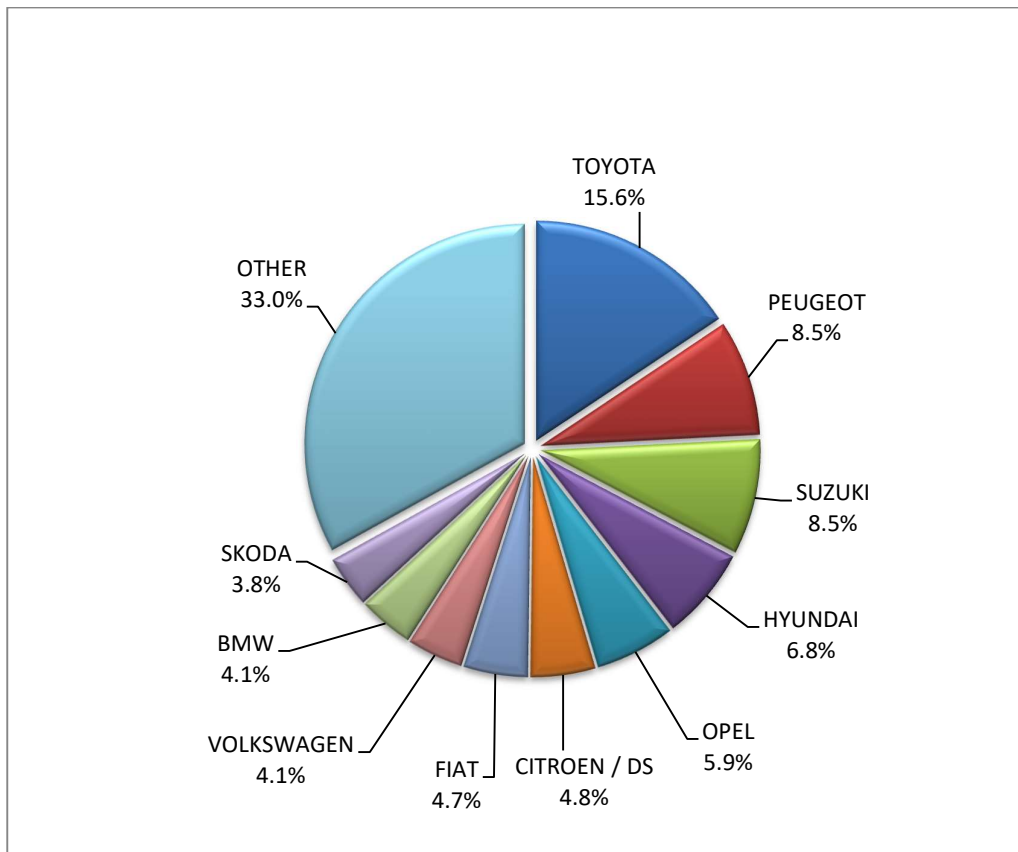


Table 5
Sales of new and used lorries by make: May 2024 and January - May 2024

Make	Lorries			
	May		January - May	
	new	used	new	used
ADDAX MOTORS, ISEKI, STAMA	-	-	1	3
ASTRA	-	-	-	1
BMC Otomotiv Sanayi ve Ticaret A.Ş. ¹	-	-	1	-
BYD	1	-	4	-
CHEVROLET	-	1	-	1
CHRYSLER	-	-	-	3
CIFA	1	-	1	-
CITROEN	41	36	294	220
DACIA	-	14	1	41
DAF	3	30	4	152
DAF ¹	4	-	6	-
DAIHATSU	-	1	-	3
DENNIS EAGLE	-	-	-	1
DODGE	-	-	-	6
FCA US LLC	-	-	-	1
FIAT	54	117	359	579
FIAT DUCATO ¹	-	-	1	-
FIAT-IVECO	-	-	-	6
FORD	117	283	732	1,373
FORD ¹	2	-	10	-
GOUPIL, MEGA, POLARIS, GEM	-	-	4	-
HYUNDAI	-	3	-	11
ISUZU	11	20	97	112
ISUZU ¹	1	-	1	-
IVECO	1	28	12	166
IVECO ¹	5	-	26	-
IVECO MAGIRUS	-	1	-	1
JEEP	1	1	11	6
KIA	-	1	-	3
LAND ROVER	-	2	-	5
MAGIRUS	-	-	-	1
MAN	1	78	2	409
MAN ¹	-	-	11	1
MAXUS, LDV	2	-	22	2
MERCEDES	17	344	100	1,863
MERCEDES ¹	13	1	43	3
MERCEDES ²	-	-	2	1
MITSUBISHI	-	30	4	161
MITSUBISHI ¹	6	-	29	1
MITSUBISHI 2	1	1	1	1
MITSUBISHI FUSO	-	4	-	4
NISSAN	8	55	37	234
NISSAN ¹	2	-	5	-
NISSAN ²	-	-	-	1

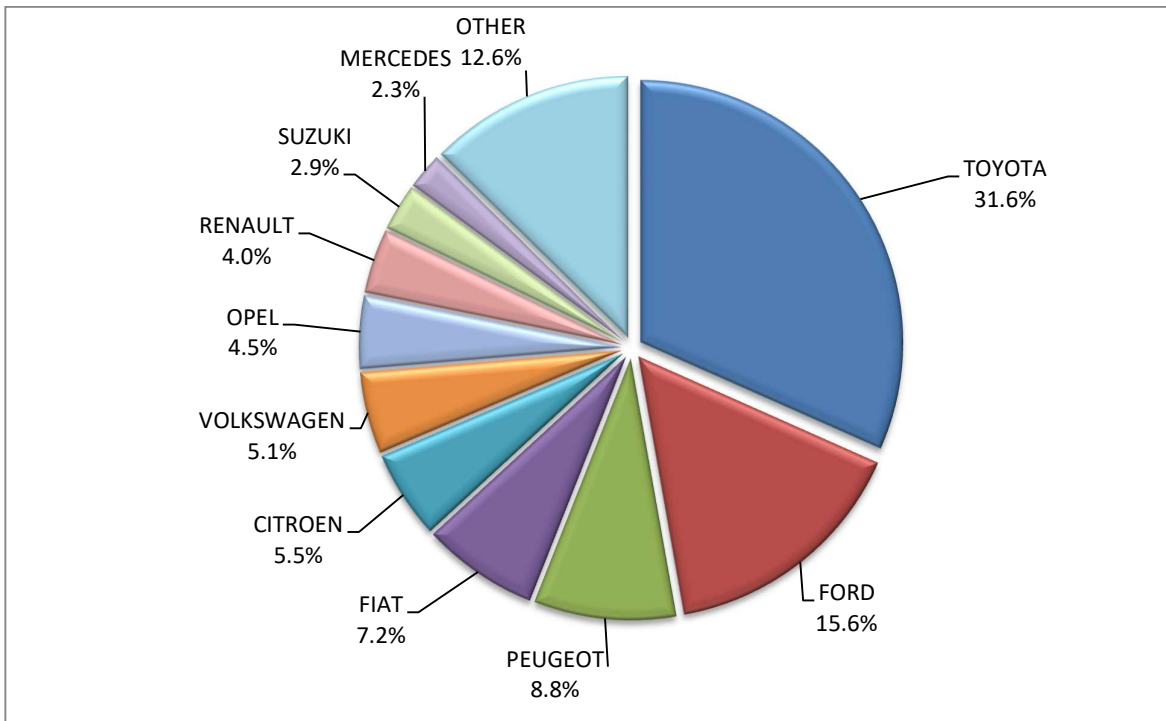
Table 5 (cont)
Sales of new and used lorries by make: May 2024 and January - May 2024

Make	Lorries			
	May		January - May	
	new	used	new	used
OAF	-	-	-	1
OPEL	34	56	202	257
PEUGEOT	66	45	312	256
PFAU	-	-	-	2
PIAGGIO	2	3	5	19
PIAGGIO ¹	2	-	5	-
PIAGGIO ²	-	-	4	2
RENAULT	30	97	146	531
SCANIA	-	39	20	209
SCANIA ¹	-	-	1	-
SEAT	-	-	-	1
SKODA	-	-	1	16
SPIER	-	-	-	2
SSANGYONG	-	-	-	1
STEYER	-	-	-	2
SUZUKI	22	-	101	-
TOYOTA	238	32	1,153	211
TOYOTA ¹	-	-	1	-
VOLKSWAGEN	38	66	300	322
VOLVO	16	57	67	294
VOLVO ¹	12	-	36	5
TOTAL	752	1,446	4,175	7,507

1 : With 2nd/3rd stage manufacturer in Greece.

2 : With 2nd/3rd stage manufacturer abroad.

Graph 10. Sales of new lorries by make (May 2024)



Graph 11. Sales of new lorries by make (January – May 2024)

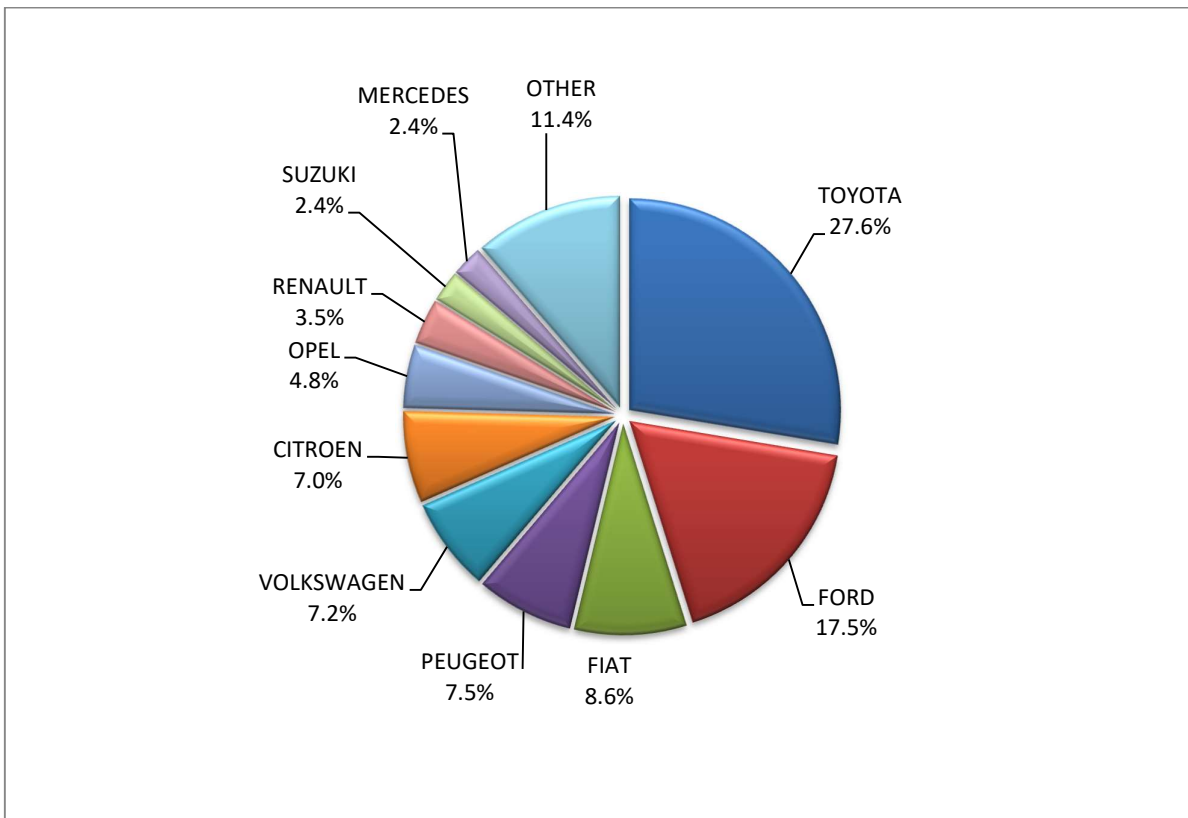


Table 6
Sales of new and used buses by make: May 2024 and January - May 2024

Make	Buses			
	May		January - May	
	new	used	new	used
AUTOBUZUL	4	-	6	-
BMC	-	-	-	1
BOVA	-	2	-	11
BYD	-	-	5	-
DAF	-	-	-	1
ERDUMAN	5	-	5	-
FIAT- IVECO	-	2	-	2
FORD	1	3	5	9
ISUZU	-	1	-	2
ISUZU, AOS, GLOBUS	-	-	1	-
IVECO	-	-	1	1
IVEKO ²	-	-	1	-
KARSAN	1	-	5	-
KASSBOHRER	-	-	-	1
MAN	-	2	35	15
MAN/NEOPLAN	-	2	-	4
MERCEDES	-	76	11	249
MERCEDES ²	-	-	2	1
MERCEDES ¹	26	-	103	-
NEOPLAN	-	-	-	8
OTOKAR	1	2	1	3
RENAULT	-	1	-	2
SCANIA	-	-	-	2
SETRA	4	8	9	27
TEMSA	1	1	8	3
TEMSA SKODA SABANCI	-	1	-	1
VDL	-	2	-	3
VOLKSWAGEN	-	-	-	1
VOLVO	-	1	-	2
XIAMEN KING LONG	-	1	-	1
YUTONG	250	-	250	-
TOTAL	293	105	448	350

1 : With 2nd/3rd stage manufacturer in Greece.

2 : With 2nd/3rd stage manufacturer abroad.

Graph 12. Sales of new buses by make (January – May 2024)

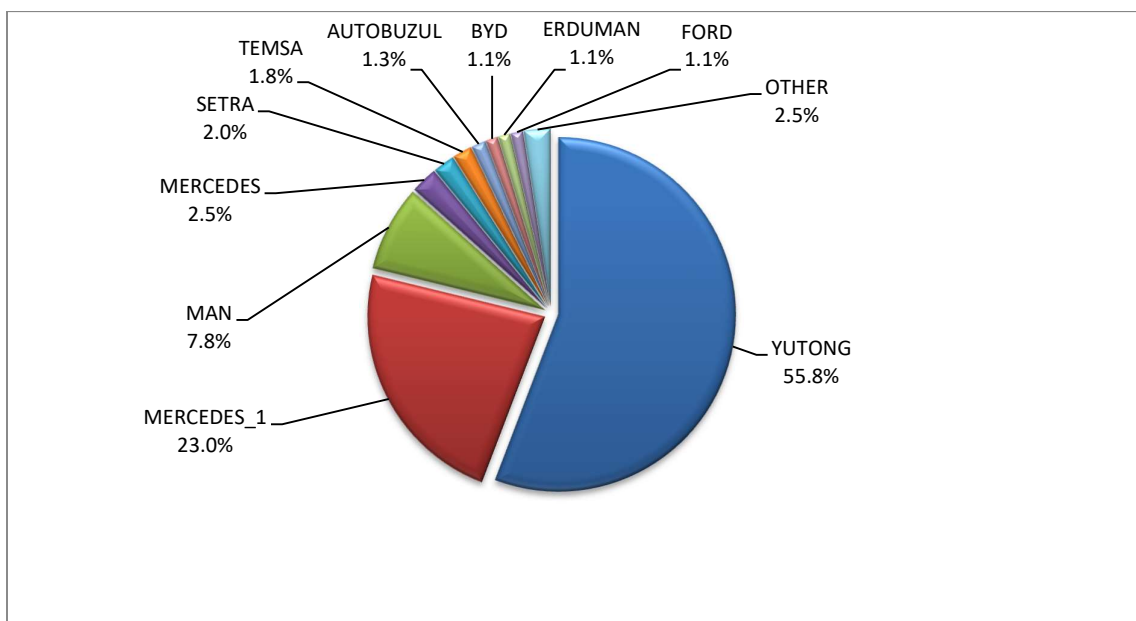


Table 7
Sales of new and used motorcycles by make or manufacturer: May 2024 and January - May 2024

Make	Motorcycles			
	May		January - May	
	new	used	new	used
AEON MOTOR	-	-	-	1
AJP	-	-	1	-
APRILIA	48	4	186	22
ARENA, ELYX, MIFUN, VMOTO	4	-	8	-
ARIIC, JINLANG	4	-	18	-
ARMONY, ARORA, BUKE, BULL MOTORS	3	-	21	-
ASUS, YUKI, RATO, DOCKER, MIGLIORI, VICTORY, AVETA	37	-	77	-
BAJAJ	4	-	22	-
BASHAN, AMGroup, AMGroup Bike, DON, IRBIS, WORKER BEAR, Nomik ATV 2	8	-	17	1
BAW, NIEVE, RELIVE	-	-	20	-
BENDA, KEEWAY, BDMOTO	2	-	2	-
BENELLI	90	2	456	4
BETA	10	-	68	6
BMW	141	26	512	148
BOMBARDIER RECREATIONAL PRODUCTS ING (BRP)	2	-	8	1
BRIXTON	9	-	44	-
BUELL	-	-	-	1
BUGGYCAR, HOLLYBEACH, ITALCAR	3	-	12	-
CF MOTO, CSR, QUAZILLA	-	-	-	1
CFMOTO	370	-	937	3
CFMOTO, KEEWAY	8	-	41	-
CFMOTO, WHITE KNUCKLE, MONDIAL, JUNAK	-	-	-	1
CFMOTO, ZEEHO	5	-	21	-

Table 7 (cont)

Sales of new and used motorcycles by make or manufacturer: May 2024 and January - May 2024

Make	Motorcycles			
	May		January - May	
	new	used	new	used
CHONGQING	-	-	-	1
DAYANG, DAYTONA MOTORS, NIPPONIA, DOCKER, WAYEL, SUMCO, VEEROAD, CETUR, RUTEC	-	-	1	-
DAYANG, DAYTONA MOTORS, NIPPONIA, DOCKER, WAYEL, SUMCO, VEEROAD, CETUR, RUTEC, ZENKO	1	-	4	-
DAYANG, DAYTONA MOTORS, NIPPONIA, DYMOTO, DOCKER, VEEROAD, EVO MOTORS, SUMCO, CETUR, HANSOM	1	-	3	-
DAYANG, DAYTONA MOTORS, NIPPONIA, DYMOTO, VEEROAD, EVO MOTORS, MH MOTORCYCLES, FKM, FKMOTORS	18	-	72	-
DAYANG, DAYTONA MOTORS, NIPPONIA, KUBA, VEEROAD, SUMCO, CETUR, RUTEC	90	-	345	-
DAYANG, DAYTONA MOTORS, NIPPONIA, VEEROAD	25	-	184	-
DAYANG, DAYTONA MOTORS, NIPPONIA, VEEROAD, DOCKER	53	-	261	-
DAYANG, DAYTONA MOTORS, NIPPONIA, VEEROAD, RUTEC, CETUR	175	-	548	-
DAYANG, DYMOTO, DAYTONA MOTORS, NIPPONIA, MH MOTORCYCLES, ORCAL, SUMCO, KUBA, RKS, RUTEC	15	-	44	-
DAYANG, ECOCREMO, ECOOTER, ECOOTOR, AGM, ORCAL, SUMCO	-	-	4	-
DAYANG, NIPPONIA, DAYTONA MOTORS, VEEROAD, SUMCO, DOCKER, MH MOTORCYCLES	2	-	9	-
DAYTONA	-	-	23	-
DAYTONA MOTORS, DAYANG, DYMOTO, NIPPONIA, MH MOTORCYCLES, ORCAL, SUMCO, RUTEC, AJS	6	-	18	-
DAYTONA MOTORS, DAYANG, NIPPONIA, DYMOTO, DOCKER, VEEROAD, EVO MOTORS, SUMCO, CETUR, HANSOM, RUTEC	10	-	26	-
DAYTONA MOTORS, EVO MOTORS, LONGJIA, ORCAL, NECO, VGA, ROMET MOTORS, DRAX, MONDIAL, JUNAK, ONLINE	1	-	3	-
DAYTONA MOTORS, YINGANG, KUBA, RKS, SKYJET, MAGPOWER, MITT, VENTUR, ARCHIVE MOTORCYCLE	3	-	8	-
Daytona Motors, ZONTES, TAYO, KIDEN, Haojiang, ZHONGYU, Sharpon, TANNY, TYAN, Senke, B BETA	-	-	40	-
DERBI	-	-	-	2
DIVINE STAR&MOON, GSMOON	-	-	-	1
DMEMOTO, Elyx Smart, OPAI, DME	-	-	2	-
Dofern, Frison scooter, skootec, passion, Elektra EV, CJR	-	-	1	-
DONGBEN, GANCIN, DIRONG, KRAL	3	-	7	-
DOOHAN	-	-	1	-
DUCATI	27	8	91	40
E.F.O., GOLDEN LION, SAKURA, ARTISAN, Fauro, ETALIAN, Viverra, Varaneo, Kito, E-mio, velca, E-KUMA, BOLIDE	1	-	3	-
EAGLE	-	-	-	1
ECOOTER, ETRIX, AGM, DRAX, ORCAL, SUMCO	1	-	10	-
EFUN, ZAP	4	-	14	-
EFUN, ZAP, FRISON, easy-watts	2	-	30	-
EMBUGGY, EVANGEL, The Original BeachBuggy, Beach Buggy	14	-	23	-
FANGPOWER, Kontio Motors	1	-	4	-
FANTIC MOTOR	8	-	14	-
FD MOTORS, FASPIDER, Daytona Motors, EVO Motors, Veeroad	1	-	6	-
FD MOTORS, FASPIDER, DAYTONA MOTORS, NIPPONIA, QUANTYA	-	-	9	-
FENGCHENG, FULLCHEER, Barman-pakro, NITSURO, VOLDORK, SPIMRI, Elektra EV, EKOE, BITMART	1	-	1	-
GASGAS	2	-	12	1
GENERIC, EXPLORER, MALANCA, KSR Moto Austria, Motron Motorrad	2	-	14	-
GENERIC, QJ, QJIANG, EXPLORER, RIDE	-	-	-	1

Table 7 (cont)

Sales of new and used motorcycles by make or manufacturer: May 2024 and January - May 2024

Make	Motorcycles			
	May		January - May	
	new	used	new	used
GILERA	-	-	-	1
GOCCIA, E-ZI, AGM, SFM, VGA, SACHS, SAXXX, KEEWAY, Vengo, Viarelli, EZI, E ZI	-	-	2	-
GOLDEN LION, SAKURA, ARTISAN, ETALIAN, E-mio, Fauro, Kito, Varaneo, Virerra, E.F.O., BOLIDE, E-KUMA, velca	-	-	2	-
GPX	10	-	55	-
GUSITE, RKS, KUBA, KOKO, KAVIR, BECANE, EVO MOTORS, Daytona MOTORS, SUMCO, SKYJET	24	-	80	-
Haojiang, ZONTES, TAYO, Sharpon, IFINO, KIDEN, ZHONGYU, CUBTOM, DIYUN, NAMIN, TIM DERVI, VUKA, THUMP, R-ipper	4	-	26	-
HAOJIN, LETBE, KUBA, RKS, SKYJET	8	-	9	-
HARLEY DAVIDSON	1	15	9	80
HONDA	1,071	61	5,241	267
HOOOON, PICKMAN	-	-	1	-
HORWIN	-	-	5	-
HSUN, CROWN, YAMOTO, TOMOTO, DORTO	-	1	-	1
HUSQVARNA	5	6	47	32
HYOSUNG	-	-	1	1
IIFSTEV, IIFSTMUTO	1	-	5	-
INDIAN MOTORCYCLE	2	-	10	1
ITALJET	-	-	1	1
JIAYUAN	6	-	36	-
JINMA, RUNHORSE, FARAD, hopster, DuroCar	-	-	1	-
JNEN, JUNENG, ZIPP, MOTORAN, HORS	2	-	18	-
JNEN, JUNENG, ZIPP, MOTORAN, HORS, FLEX TECH, RAZZO, TOROS, ONE, JUNAK	11	-	43	-
JNEN, JUNENG, ZIPP, MOTORAN, ONE, RAZZO, FLEX TECH, TOROS, JUNAK, TURBHO, PEZAL, ALPHA-MOBIL	27	-	120	-
JONWAY, DAYTONA MOTORS, EVO MOTORS	-	-	2	-
JONWAY, SHENKE, HUIBANG, JMSTA	-	-	2	-
KAMAX	-	-	1	-
KAWASAKI	29	6	89	47
KEEWAY	3	-	12	-
KEEWAY, KUBA	2	-	16	-
KEEWAY, LONGJIA	15	-	67	-
KSR MOTO AUSTRIA, MOTRON MOTORRAD	4	-	12	-
KTM	48	30	265	125
KUBA, MH MOTORCYCLES, MGB, SHINERAY, Daytona Motors, MASH	4	-	26	-
KWANG YANG	-	-	-	1
KYMCO	264	45	1,019	176
LEXMOTO	-	1	-	1
LIGIER	-	-	-	1
Lingzhida, LINZDA, LINDN, LINYI, LONGMAO, NLIGHT	1	-	3	-
LINHAI, LHY, KUBA, ONLINE	-	-	8	-
LOJO, RAINWOLL	3	-	10	-
LOJO, SUNPULSE, YGM	-	-	2	-
LONCIN, KINLON, LONGTING, KUBA, YUKI, MONDIAL, STMAX, KANUNI, MOTORAN, ASYA, QUSWA, PUMAREX, RALLY USA, MOD, CCM	7	-	42	-
LONCIN, KUBA, RKS, ITALIKA, SUNRACE, SKY, MALAGUTI, SUPERBIKE, ROCKET, NOVELBAT, TIGREMOTO	1	-	1	-
LONCIN, KUBA, RKS, ITALIKA, VOGUE, SUNRACE, SKY, MALAGUTI, ROCKET, SUPERBIKE, NOVELBAT, TRIDIAMOND	40	1	127	1
LONCIN, VOGUE	10	-	37	1

Table 7 (cont)

Sales of new and used motorcycles by make or manufacturer: May 2024 and January - May 2024

Make	Motorcycles			
	May		January - May	
	new	used	new	used
LONCIN, VOGUE, KUBA, RKS, ITALIKA, SUNRACE, SKY, MALAGUTI, SUPERBIKE, ROCKET, NOVELBAT, TIGREMOTO, GREEN	2	1	8	1
LONCIN, VOGUE, VOGEPRO	59	-	447	-
LONCIN,KUBA,RKS,ITALIKA,SUNRACE,SKY,MALAGUTI,SUPERBIKE,ROCKET,NOVELBAT, TIGREMOTO, GREEN	-	-	4	-
LONGJIA, ITALJET, ORCAL, BEELINE, ROMET MOTORS, GEMINI, LEXMOTO, JAHANRO, VGA, DAYTONA MOTORS	1	-	1	-
LONGJIA, ORCAL, NECO, ALFASCOOTERS, VGA, ROMET MOTORS, BARTON MOTORS, OVER, CAROLYN, KANUNI, BTC	40	-	155	-
LONGJIA, ORCAL, NECO, ALFASCOOTERS, VGA, ROMET MOTORS, BARTON MOTORS, OVER, CAROLYN, KANUNI, BTC	-	-	2	1
LONGJIA, ORCAL, NECO, ALFASCOOTERS, VGA, ROMET MOTORS, RYMCO, ASUS, OVER, CAROLYN, KANUNI, BTC, TURBHO, ITALMOTO	-	-	1	-
LONGJIA, ORCAL, NECO, VGA, ROMET MOTORS, DRAX, MONDIAL, JUNAK	-	-	1	-
LONGJIA, ORCAL, NECO, VGA, ROMET MOTORS, ROUTER, lexmoto, Gemini, MH, motorcycles	-	-	1	-
LONGJIA, ORCAL,NECO,VGA, ROMET MOTORS	25	-	111	-
LONGJIA, VICTORIA, VICTORIA MOTORRAD, ORCAL, NECO, VGA, BTC, ALFASCOOTERS, ROMET MOTORS	55	-	150	-
LONGJIA, Zündapp, VGA, NECO, BTC, AGM, ALFASCOOTERS, ROMET MOTORS, Kudaki, BARTON MOTORS, OVER BIKES	36	-	70	-
LUQI, TWISTER WHEEL, SPYDER WHEELZ, DJJD, GTS, TEKUN, Eway, Emoto, Bikers, i-coco	-	-	1	-
LVNENG	-	-	7	-
LONGJIA, ZUNDAPP, VGA, NECO, BTC, ALFASCOOTERS, ROMET MOTORS	2	-	8	-
MACBOR, RVM, COLOVE, DAYTONA MOTORS, ZF-KY, KOVE	13	-	13	-
MACBOR, RVM, COLOVE, DAYTONA MOTORS, ZF-KY, online, KOVE	17	-	57	-
MACBOR, RVM, COLOVE, ORCAL, DAYTONA MOTORS, ZF-KY, Lexmoto, OVER BIKES, YUKI, AJS	2	-	21	-
MALAGUTI	44	1	200	3
MBK	-	1	-	4
MBP, Morbidelli, KEEWAY, KUBA, RKS	1	-	3	-
MELEX	2	-	2	-
MGK HM	183	-	792	1
MICRO	12	-	22	-
MODENAS	-	-	-	1
MONTESA	2	-	2	1
MORBIDELLI, KEEWAY, MBP, RKS	1	-	1	-
MOTO GUZZI	10	1	47	3
MOTO MORINI	-	-	11	-
MOTRON MOTORRAD, ZONGSHEN	1	-	5	-
MV AGUSTA	-	-	-	1
NACIONAL MOTOR SAU	-	-	-	1
NERVA	-	-	2	-
NEWBOT	-	-	1	-
NIU, NUUV	1	-	9	-
ODES	30	-	41	-
OPAI	1	-	2	-
ORCAL, SOMOTO, AJS, SENKE, HERALD, ITALJET, WACCO, MOTOB, CLEVELAND CYCLEWERKS ACE, MERCURY ,SAXXX, SFM	-	1	1	1
PAOLETTI RACING	-	1	-	1

Table 7 (cont)

Sales of new and used motorcycles by make or manufacturer: May 2024 and January - May 2024

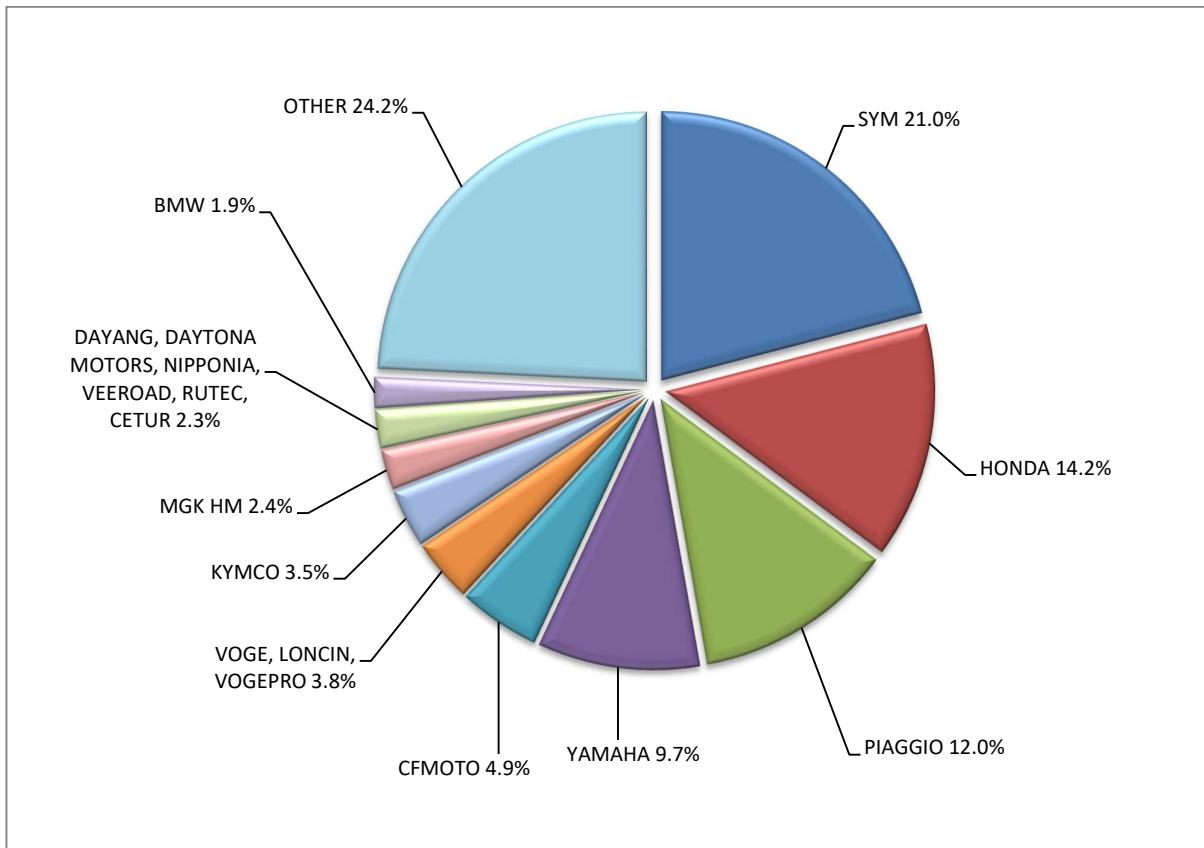
Make	Motorcycles			
	May		January - May	
	new	used	new	used
PEUGEOT	29	2	155	5
PIAGGIO	907	46	3,590	152
PILOTCAR	-	-	2	-
POLARIS	7	1	41	5
QINGQI, CLEVELAND, CYCLEWERKS ACE, CLEVELAND ACE, CLEVELAND CYCLEWERKS ACE DELUXE	-	1	-	2
QJ, QJIANG, KEEWAY, LEONE, RKS, BENELLI, EMPIRE KEEWAY, KUBA	1	1	2	3
QJ, QJIANG, QJMOTOR, B MOTOB	44	-	226	-
QJ, QJIANG, QJMOTOR, B MOTOB, QJTEC	23	-	157	-
RAY ELECTRIC MOTORS	1	-	1	-
REDMOTO	-	-	2	-
REGIS	-	-	-	1
RENAULT	-	-	-	1
RENLI	26	-	50	-
RIEJU	-	-	2	-
RIEJU, DRAC	-	1	1	1
RIYA, RYMOTO, KUBA, RKS, LEXMOTO, MITT, ALPHA MOTORS, IMF, ROMET, ZIPP, ARORA, ZORRO, MOJITO	9	-	10	-
ROYAL ENFIELD	39	-	132	2
Royalloy, Royal Alloy, RA	1	-	6	-
SAKURA, GOLDEN LION, ARTISAN, Fauro, ETALIAN, Viverra, Varaneo, Kito	-	-	26	-
SAKURA, GOLDEN LION, ARTISAN, Fauro, ETALIAN, Viverra, Varaneo, Kito, E-mio, velca, E.F.O,E-KUMA, BOLIDE, LINZE	1	-	8	-
SAN YANG	-	1	-	1
SCUTUM, ETRIX, SILENCE	2	-	10	-
SEGWAY	51	-	107	-
SHANYANG, ATLAS PANTHER, YAMAZUKI MOTO, MOTORKING, Hirlee, XB	-	-	6	-
SHERCO	-	2	12	9
SHINERAY, SWM	-	-	4	-
SILENCE, SCUTUM, ETRIX	10	-	47	-
SKYTEAM, SACIN, CSR, METALCO, SOKUDO, BAZUKA, MINICO, MOTOSBASI, MOTOS BORDOY, SUMKO, ROXON, MONKEY BIKES	1	-	10	1
SURRON	-	-	5	-
SUZUKI	70	20	284	91
SYM	1,578	20	5,817	74
TARO, JUNAK, BARTON MOTORS ,ORCAL, Lexmoto	17	-	75	-
TARO, JUNAK, BARTON MOTORS, ORCAL, Lexmoto, MITT, NECO, WOTTAN, MAGPOWER, ADAMOTO MOTORCYCLES	19	-	33	-
TARO, JUNAK, BARTON MOTORS, ORCAL, Lexmoto, MITT, NECO, WOTTAN, MAGPOWER, ADAMOTO, MAXON, MAX-ON, TRMOTOR, CHUANL	5	-	20	-
TARO,TRMOTOR, CHUANL, JUNAK, Lexmoto, BARTON MOTORS, MITT, NECO, MAXON, WOTTAN MOTOR, MAX-ON, MOTOB, MOTO B	39	-	67	-
TARO,TRMOTOR,CHUANL,JUNAK,BARTON MOTORS,ORCAL,Lexmoto,MITT,NECO,WOTTAN,MAGPOWER,ADAMOTO MOTORCYCLES	1	-	5	-
TAYO, HAOJIANG, ZHONGYU, THUMP, THUMPSTAR, KIDEN, ZONTES, Junak	3	-	29	1
TAYO, HAOJIANG, ZHONGYU, THUMP, THUMPSTAR, KIDEN, ZONTES, Junak, SENKE, TANNY, TYAN, ROMET, ROMET MOTORS, ROUTER	7	-	34	-
TAYO, ZONTES, KIDEN, Haojiang, ZHONGYU, Sharpon, TANNY, TYAN, Senke, B BETA, Daytona Motors	93	-	385	-
TAZZARI	-	-	1	-

Table 7 (cont)

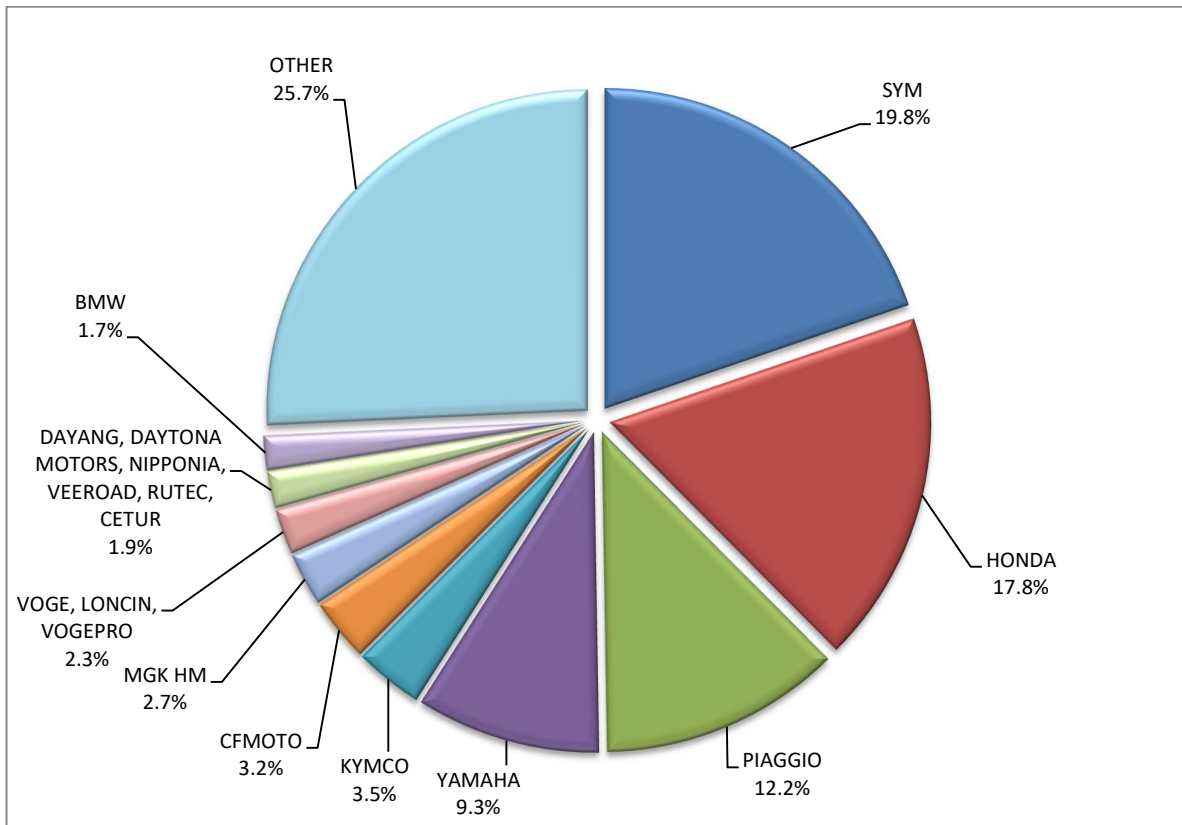
Sales of new and used motorcycles by make or manufacturer: May 2024 and January - May 2024

Make	Motorcycles			
	May		January - May	
	new	used	new	used
TEYIN, TIANYING, XINBEN, SANBEN, ALFASCOOTERS, Alpha Motors, APACHI	1	-	14	-
TGB	-	-	2	1
TIANYING, RIYA, HONGYUNDA, TYM, HONLING, SANBEN, XINBEN, TAMCO, ALISON, DMK MOTORS	1	-	9	-
TIANYING, RIYA, HONGYUNDA, TYM, HONLING, TAMCO, ALISON, DMK MOTORS, WLIE, LEEWAY, WLXQ, AP Gmoto, ALFA	2	-	11	-
TIANYING, RIYA, SANBEN, TEYIN, TYM, Alfascooters, JORDON, YUKI, YAMASAKI, IVA, SENZO, KillerBee	1	-	7	-
TIANYING, RIYA, SANBEN, TEYIN, TYM, BERMOTO, Capirelli, Gemini, KENTOYA, LGW MOTO, Masaru, Romet, VENTO	-	-	1	-
TINBOT, KOLLTER, MASAI, INTO, VIARELLI, EDRIVE, DuroCar, MGK HM, Fauro, BRINCO	1	-	4	-
TINBOT, KOLLTER, MASAI, MS ENERGY	2	-	2	-
TM RACING	1	-	3	-
TRIUMPH	52	1	233	7
UM	18	-	63	-
VELIMOTOR, VOLTAMP, ALTUX, KKL HITECH, WHEELN WATER TECH, ALTUS, NUVEAU MONDE, EN MOTO, YOUNBEE MOTORS, KKL	-	-	3	-
VELOCIFERO, CECOTEC	-	-	1	-
VMOTO-SOCO, E-MAX, VMOTO, SUPER SOCO	4	-	22	-
VOGE, LONCIN, VOGEPRO	283	-	677	-
VOLTA, VTA, REVOLT	1	-	3	-
VONROAD WJM 150	-	-	-	1
WANGYE, SANBEN, UM, KENOS, SUPERBYKE, MDC, MISTRAL	7	-	39	-
WONJAN, THRUST MOTOR, WMOTO, KEEWAY, TD	26	-	117	-
WUZHENG	-	-	1	-
XEV, X, XEV YOYO	21	-	58	1
XINRI, SUNRA ,APACHI, ISILDAR, ISILDAR APACHI, Wayscral, KRAL	3	-	20	-
YADEA	-	-	2	-
YAMAHA	734	85	2,738	359
ZERO MOTORCYCLES	-	-	4	-
ZHIDOU , ZD, RKS	-	-	9	-
ZHONGNENG, ZNEN, AGM, AJS, YUKI, COLIBRI, EUROCKA, BTC, NOVA MOTORS, LEXMOTO	-	-	1	-
ZHONGNENG, ZNEN, AGM, BTC, CLS, COLIBRI, DAYTONA MOTORS, DERRACE, DOCKER, JM MOTORS, KUBA, La souris, LEXMOTO	24	-	70	-
ZHONGNENG, ZNEN, AGM, YUKI, COLIBRI, LEXMOTO, Minimoto, NECO, ROMET MOTORS	2	-	5	-
ZUNDAPP	-	-	-	1
ZXMCO, NIJ, DAYTONA MOTORS, PINK	5	-	9	-
TOTAL	7,531	393	29,448	1,711

Graph 13. Sales of new motorcycles (May 2024)



Graph 14. Sales of new motorcycles (January – May 2024)



EXPLANATORY NOTES

Survey on the issuing of new road motor vehicle circulation licenses	The survey on the issuing of new motor vehicle circulation licenses is a census survey. The released data give information, at country level, on the brand and type of the motor vehicle, as well as whether it is new or used. The survey does not include vehicles that move on rails, trolley busses, agricultural tractors and machinery. In addition, the following are excluded: all motor vehicles of the Armed Forces, Police, Fire Brigade, State Services, Diplomatic Corps, Foreign Missions, and Invalids of Wars, as well as motorcycles with a cylinder capacity less than 50 cc.
Legal basis	Law 3832/2010
Reference Period	May 2024
Coverage	The production of monthly data is based on the registers held by the Ministry of Infrastructure, Transport and Networks, which records all the monthly changes observed in the vehicle registration licenses at country level.
Definitions	<p>Road motor vehicle is any vehicle that, irrespective of the number of wheels, is moved by an engine and is designed to transport persons or cargo or both of them, either they are on the same single vehicle or on a trailer carried by the main motor vehicle.</p> <p>New road motor vehicle is any motor vehicle that is registered for the first time in Greece during the reference month and has not been put into circulation in any other country.</p> <p>Used motor vehicle is any motor vehicle that is registered for the first time in Greece and has been imported as a used one from abroad</p> <p>Passenger motor vehicle: it is a motor vehicle designed to carry mostly people, having no more than 9 seats, including the driver's seat.</p> <p>Bus: it is a motor vehicle, which is designed to carry mostly people, having more than 10 seats, including the driver's seat. In the corresponding tables of this announcement, this category also includes articulated buses.</p> <p>Lorry: it is motor vehicle designed to carry mostly cargo. In the corresponding tables of this announcement, this category also includes tractors, tow trucks, articulated tractors, and trucks with trailers.</p> <p>Motorcycle: any two-wheeled motor vehicle, with or without sidecar, with maximum authorized design speed over 45 km/h, or in case it is powered by a combustion engine, with a cylinder capacity of 50 cc or over. In the corresponding tables of this announcement, this category also includes the three-wheeled motor vehicles – motor tricycles.</p> <p>Tricycle motor vehicle: it is a motor vehicle with three symmetrical wheels with maximum authorized design speed over 45 km/h, or in case it is powered by a combustion engine, with a cylinder capacity over the 50 cc. This category also includes four-wheel vehicles, except the light four-wheel motorcycles, whose empty vehicle tare (excluding the weight of the fuel or mixture of fuel-oil or the weight of the batteries for electric cars) is up to 400 kg in the case the vehicle is designed for passenger use or up to 550 kg in case the vehicle is designed to carry cargo and whose engine is up to 15KW.</p>
Methodology	Exhaustive Survey. The primary data derive from the Ministry of Infrastructure, Transport and Networks and are based on the issuing of new circulation licenses as they are registered by the Regional Offices for Transport and Communications.
References	More information (graphs, tables) concerning the survey on the issuing of new motor vehicle circulation licenses are available on the webpage of ELSTAT, www.statistics.gr , under the link http://www.statistics.gr/en/statistics/-/publication/SME24/-