



INDUSTRIAL PRODUCTION INDEX: February 2025, y-o-y decrease of 0.1%

The Hellenic Statistical Authority announces the Industrial Production Index (IPI) with base year 2015=100.0 for February 2025, the evolution of which, on the basis of provisional and working day adjusted data, is as follows:

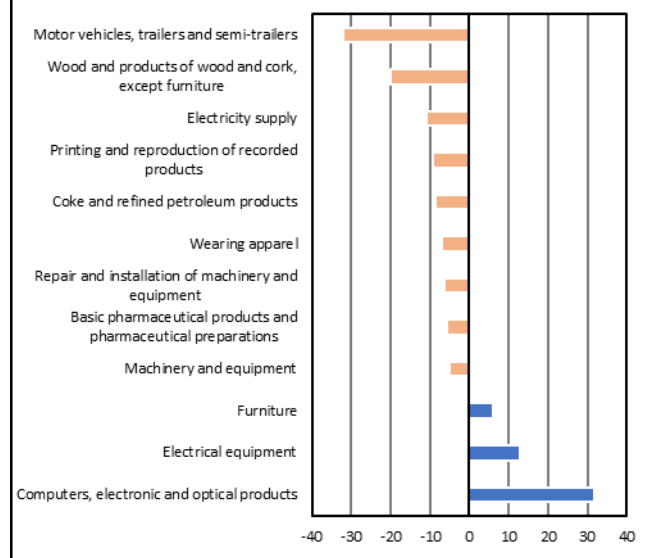
The Overall Industrial Production Index in February 2025 recorded a decrease of 0.1% compared with February 2024. The Overall IPI in February 2024 increased by 2.1% compared with the corresponding index in February 2023 (Table 1).

The average Overall Industrial Production Index for the period from January to February 2025 recorded an increase of 1.2% compared with the average IPI of the period from January to February 2024 (Table 2).

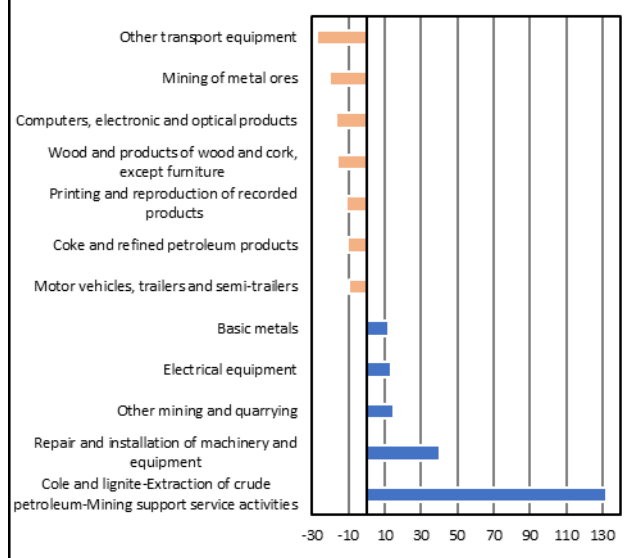
The seasonally adjusted Overall Industrial Production Index in February 2025 recorded a decrease of 3.3% compared with the corresponding index of January 2025 (Table 4).

The index of motor vehicles, trailers and semi- trailers division showed the greatest percentage decrease, whereas the index of computers, electronic and optical products division recorded the greatest percentage increase in February 2025 compared with January 2025. Comparing the indices of February 2025 with the corresponding indices of February 2024, the greatest percentage decrease was recorded in other transport equipment division, while the highest percentage increase was recorded in mining of coal and lignite – extraction of crude petroleum and natural gas – mining support service activities divisions (Tables 1 and 4).

**Graph 1. Largest monthly rates of change (m-o-m)
of the seasonally adjusted 2-digit divisions indices (%)
February 2025 / January 2025**



**Graph 2. Largest annual rates of change (y-o-y)
of the calendar adjusted 2-digit divisions indices (%)
February 2025 / February 2024**



Information on methodological issues:

Business Statistics Division
Manufacture-Construction Indices and Industrial Products Section
Head of the Section: Vlachokosta Evridiki
Tel: +30 213 135 2056
E-mail: e.vlachokosta@statistics.gr

Information on data provision:

Tel: +30 213 135 2024, 2308, 2310
E-mail: data.dissem@statistics.gr

Evolution of the Industrial Production Index in February 2025

I. Annual changes: February 2025 / February 2024 (Table 1)

The 0.1% decrease of the working day adjusted Overall IPI in February 2025, compared with the corresponding index in February 2024, is due to the annual changes of the sub-indices in the following industrial sections:

Decrease of:

- 5.2% in the Electricity Supply Index.

Increase of:

- 0.9% in the Manufacturing Index. The increase was mainly the result of the annual changes of the sub-indices in the following 2-digit divisions: repair and installation of machinery and equipment, electrical equipment, basic metals, tobacco products, food.
- 2.2% in the Water Supply Index.
- 4.5% in the Mining and Quarrying Index. The increase was the result of the annual changes of the sub-indices in the following 2-digit divisions: mining of coal and lignite – extraction of crude petroleum and natural gas – mining support service activities, other mining and quarrying.

II. Rates of change of the average index of the period January - February 2025 compared with the corresponding index of the period January - February 2024 (Table 2)

The 1.2% increase of the working day adjusted average Overall IPI in the 2-month period January - February 2025, compared with the corresponding index in January - February 2024, is due to the corresponding rates of change of the sub-indices in the following industrial sections:

Increase of:

- 3.3% in the Water Supply Index.
- 1.6% in the Manufacturing Index.
- 1.2% in the Mining and Quarrying Index

Decrease of:

- 0.2% in the Electricity Supply Index.

III. Monthly changes: February 2025 / January 2025 (Table 4)

The 3.3% decrease of the seasonally adjusted Overall IPI in February 2025, compared with the corresponding index in January 2025, is due to the monthly changes of the sub-indices in the following industrial sections:

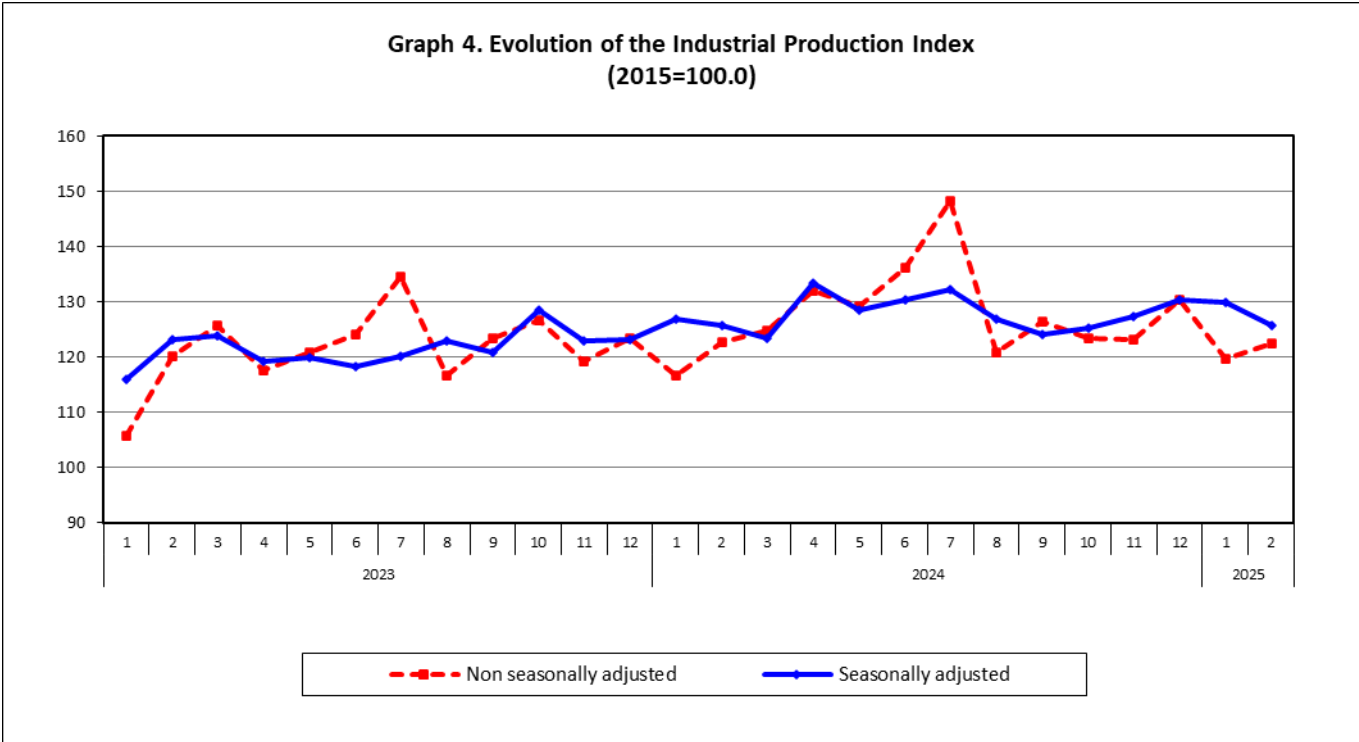
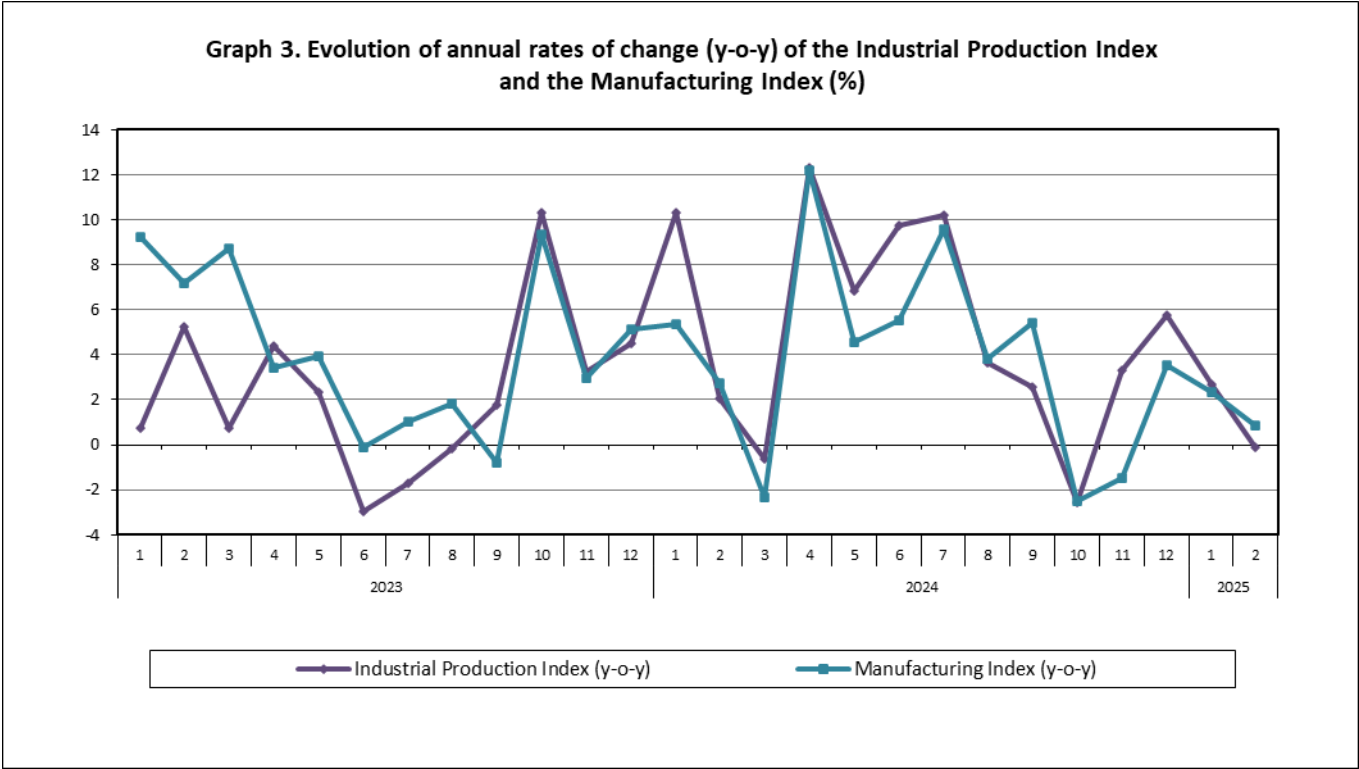
Decrease of:

- 10.8% in the Electricity Supply Index.
- 1.4% in the Manufacturing Index.
- 0.2% in the Water Supply Index.

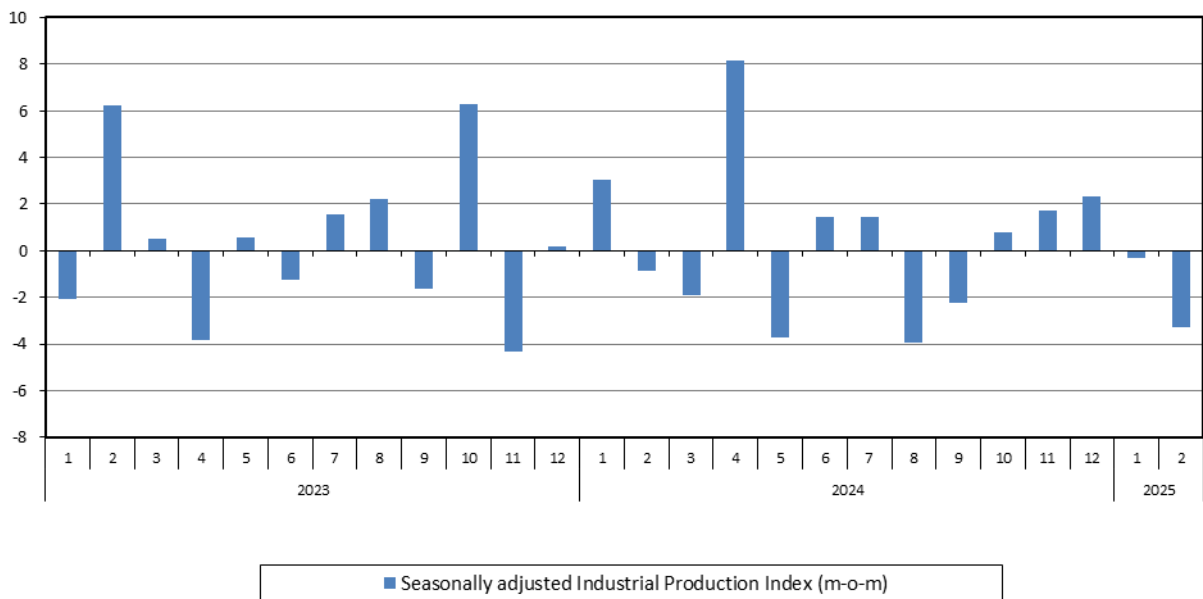
Increase of:

- 1.4% in the Mining and Quarrying Index.

The following graphs depict the annual rates of change (y-o-y) of the Industrial Production Index and the Manufacturing Index, the evolution of the seasonally and non-seasonally adjusted Overall Industrial Production Index, as well as the monthly rates of change (m-o-m) of the seasonally adjusted index.



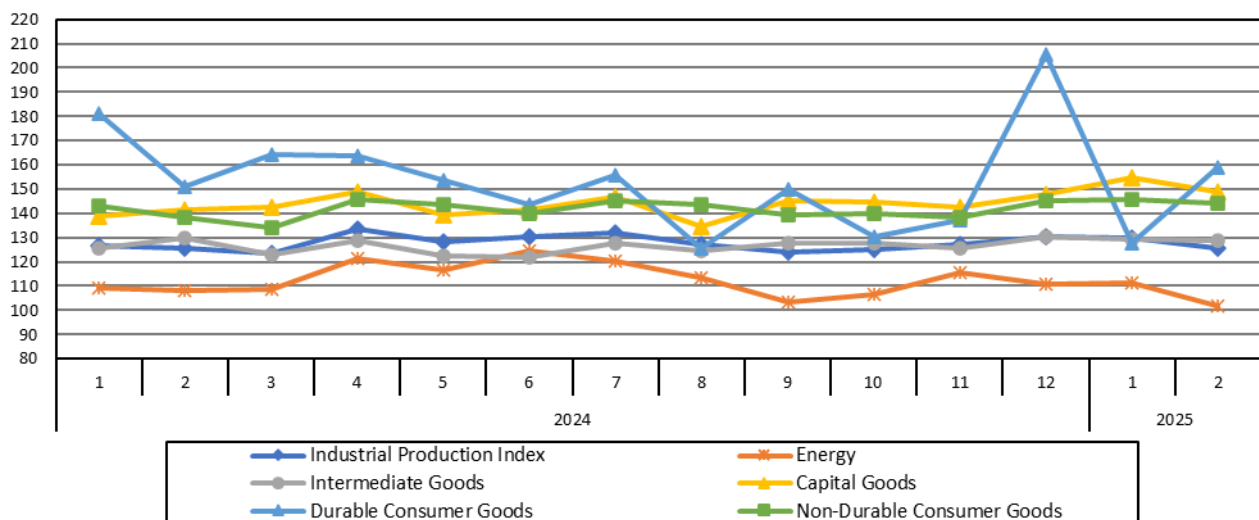
Graph 5. Evolution of the monthly rates of change (m-o-m) of the seasonally adjusted Industrial Production Index (%)



It should be noted that the time series with the seasonally adjusted indices is recalculated every time a new observation is added in the time series. Therefore, the seasonally adjusted data differ from the data published in the previous Announcement.

The following graphs depict the evolution of the seasonally adjusted Industrial Production Index and the Main Industrial Groupings, as well as the evolution of the Industrial Production Index and the Industrial Sections Indices.

Graph 6. Evolution of the seasonally adjusted Industrial Production Index and the Main Industrial Groupings Indices, January 2024 - February 2025 (2015=100.0)



**Graph 7. Evolution of the Industrial Production Index and the Industrial Section Indices
(2015=100.0)**

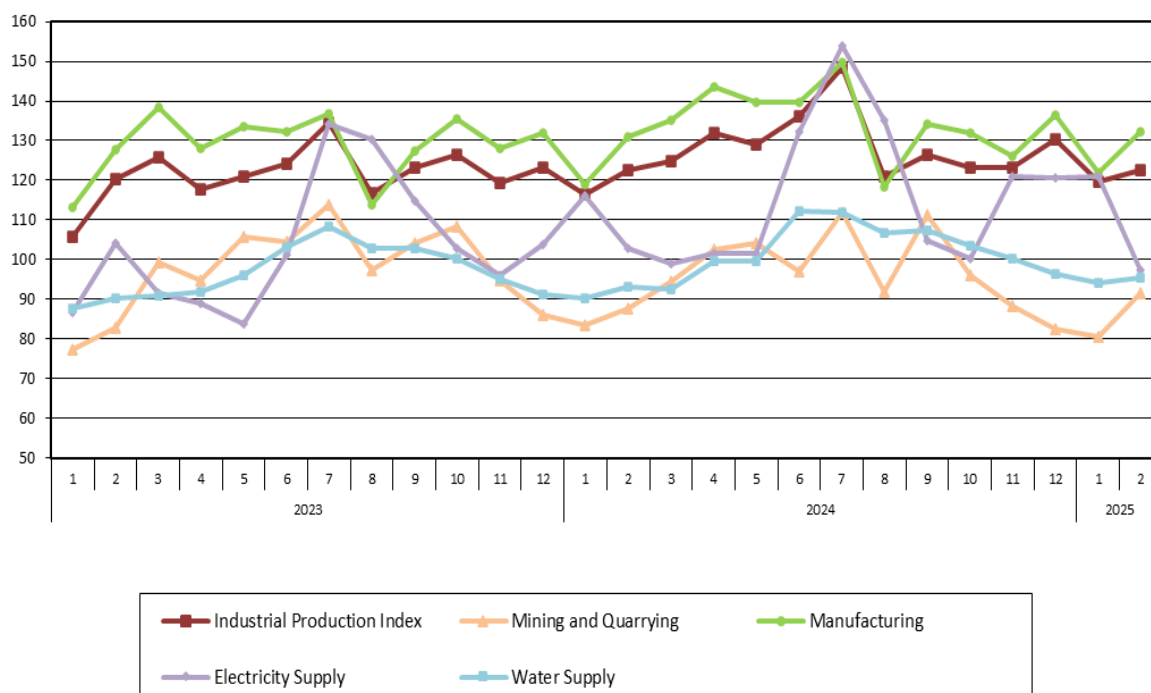


Table 1. Annual rates of change of the Industrial Production Index
(Working day adjusted data, according to the real number of working days)
Base year: 2015=100.0

Code		Division	February			Rate of change (%)	
			2025*	2024*	2023	2025/2024	2024/2023
OVERALL INDEX			122.48	122.64	120.18	-0.1	2.1
B	MINING AND QUARRYING		91.67	87.75	82.75	4.5	6.0
05-06-09	Mining of coal and lignite – Extraction of crude petroleum and natural gas – Mining support service activities		23.40	10.07	38.31	132.4	-73.7
07	Mining of metal ores		102.93	129.13	118.98	-20.3	8.5
08	Other mining and quarrying		97.83	84.92	76.81	15.2	10.6
C	MANUFACTURING		132.24	131.11	127.60	0.9	2.8
10	Food		120.26	112.12	112.12	7.3	0.0
11	Beverages		94.15	95.46	84.48	-1.4	13.0
12	Tobacco products		185.07	168.43	136.09	9.9	23.8
13	Textiles		106.00	109.55	123.20	-3.2	-11.1
14	Wearing apparel		67.91	71.15	79.84	-4.6	-10.9
15	Leather and related products		71.64	70.82	89.76	1.2	-21.1
16	Wood and products of wood and cork, except furniture		92.89	110.94	106.21	-16.3	4.5
17	Paper and paper products		115.97	116.83	115.55	-0.7	1.1
18	Printing and reproduction of recorded products		127.37	143.09	113.36	-11.0	26.2
19	Coke and refined petroleum products		106.48	118.67	122.22	-10.3	-2.9
20	Chemicals and chemical products		136.45	140.89	120.78	-3.2	16.6
21	Basic pharmaceutical products and pharmaceutical preparations		284.74	274.22	297.27	3.8	-7.8
22	Rubber and plastic products		130.34	128.85	125.65	1.2	2.5
23	Other non-metallic mineral products		139.50	142.79	115.82	-2.3	23.3
24	Basic metals		151.56	134.90	131.43	12.4	2.6
25	Fabricated metal products, except machinery and equipment		130.91	138.54	122.75	-5.5	12.9
26	Computers, electronic and optical products		277.71	334.62	301.02	-17.0	11.2
27	Electrical equipment		165.47	145.89	131.63	13.4	10.8
28	Machinery and equipment n. e. c.		134.62	126.74	140.02	6.2	-9.5
29	Motor vehicles, trailers and semi-trailers		103.89	115.31	192.02	-9.9	-39.9
30	Other transport equipment		42.99	59.38	40.06	-27.6	48.2
31	Furniture		135.62	131.68	124.31	3.0	5.9
32	Other manufacturing		113.66	106.59	121.89	6.6	-12.6
33	Repair and installation of machinery and equipment		113.66	80.85	87.89	40.6	-8.0
D	ELECTRICITY SUPPLY		97.35	102.74	104.23	-5.2	-1.4
35	Electricity supply		97.35	102.74	104.23	-5.2	-1.4
E	WATER SUPPLY		95.38	93.29	90.32	2.2	3.3
36	Water collection, treatment and supply		95.38	93.29	90.32	2.2	3.3
MAIN INDUSTRIAL GROUPINGS							
1	Energy		99.89	106.58	108.47	-6.3	-1.7
2	Intermediate goods		128.00	128.99	117.07	-0.8	10.2
3	Capital goods		136.82	129.67	131.77	5.5	-1.6
4	Consumer Durables		146.42	135.82	122.87	7.8	10.5
5	Consumer Non-Durables		140.50	134.58	133.53	4.4	0.8

* Provisional data

Note: The indices are rounded up to two decimal digits when published and percentage changes up to one decimal digit when published.

Table 2. Average indices of the period January – February and rates of change of the Industrial Production Index
(Working day adjusted data, according to the real number of working days)

Base year: 2015=100.0

Code		Division	Average indices of the period Jan.-Feb.			Rate of change (%)	
			2025*	2024*	2023	2025/2024	2024/2023
OVERALL INDEX			121.09	119.60	112.91	1.2	5.9
B	MINING AND QUARRYING		86.12	85.68	80.02	0.5	7.1
05-06-09	Mining of coal and lignite – Extraction of crude petroleum and natural gas – Mining support service activities		24.39	12.33	29.78	97.8	-58.6
07	Mining of metal ores		97.87	125.89	117.32	-22.3	7.3
08	Other mining and quarrying		91.15	82.63	74.57	10.3	10.8
C	MANUFACTURING		127.06	125.12	120.33	1.6	4.0
10	Food		115.87	109.30	106.12	6.0	3.0
11	Beverages		85.39	86.04	78.67	-0.8	9.4
12	Tobacco products		177.28	156.12	135.10	13.6	15.6
13	Textiles		104.64	103.11	109.34	1.5	-5.7
14	Wearing apparel		66.45	64.67	76.36	2.8	-15.3
15	Leather and related products		57.05	60.50	72.11	-5.7	-16.1
16	Wood and products of wood and cork, except furniture		96.25	97.70	94.01	-1.5	3.9
17	Paper and paper products		112.40	114.72	112.41	-2.0	2.1
18	Printing and reproduction of recorded products		128.12	133.16	118.87	-3.8	12.0
19	Coke and refined petroleum products		110.62	117.94	118.12	-6.2	-0.2
20	Chemicals and chemical products		128.84	132.24	114.92	-2.6	15.1
21	Basic pharmaceutical products and pharmaceutical preparations		289.50	288.10	281.10	0.5	2.5
22	Rubber and plastic products		126.12	122.38	117.92	3.1	3.8
23	Other non-metallic mineral products		131.02	131.84	109.85	-0.6	20.0
24	Basic metals		145.98	128.93	130.94	13.2	-1.5
25	Fabricated metal products, except machinery and equipment		118.77	124.72	112.20	-4.8	11.2
26	Computers, electronic and optical products		209.38	257.84	254.26	-18.8	1.4
27	Electrical equipment		145.62	136.05	129.26	7.0	5.3
28	Machinery and equipment n. e. c.		116.11	107.09	113.64	8.4	-5.8
29	Motor vehicles, trailers and semi-trailers		101.31	97.08	145.99	4.4	-33.5
30	Other transport equipment		36.42	48.38	37.05	-24.7	30.6
31	Furniture		111.18	112.63	108.40	-1.3	3.9
32	Other manufacturing		109.16	105.10	116.13	3.9	-9.5
33	Repair and installation of machinery and equipment		113.42	78.31	80.15	44.8	-2.3
D	ELECTRICITY SUPPLY		109.22	109.40	95.43	-0.2	14.6
35	Electricity supply		109.22	109.40	95.43	-0.2	14.6
E	WATER SUPPLY		94.77	91.76	88.97	3.3	3.1
36	Water collection, treatment and supply		94.77	91.76	88.97	3.3	3.1
MAIN INDUSTRIAL GROUPINGS							
1	Energy		108.04	110.09	101.87	-1.9	8.1
2	Intermediate goods		121.31	120.19	111.74	0.9	7.6
3	Capital goods		124.41	114.34	115.62	8.8	-1.1
4	Consumer Durables		111.72	123.45	104.22	-9.5	18.5
5	Consumer Non-Durables		136.26	131.81	126.86	3.4	3.9

* Provisional data

Note: The indices are rounded up to two decimal digits when published and percentage changes up to one decimal digit when published.

Table 3. Monthly rate of change of the Industrial Production Index*(Working day adjusted data, according to the real number of working days)***Base year: 2015=100.0**

Code	Division	February 2025*	January 2025*	Rate of change (%) Feb. 2025/Jan. 2025
OVERALL INDEX		122.48	119.70	2.3
B	MINING AND QUARRYING	91.67	80.58	13.8
05-06-09	Mining of coal and lignite – Extraction of crude petroleum and natural gas – Mining support service activities	23.40	25.39	-7.82
07	Mining of metal ores	102.93	92.82	10.9
08	Other mining and quarrying	97.83	84.47	15.8
C	MANUFACTURING	132.24	121.89	8.5
10	Food	120.26	111.48	7.9
11	Beverages	94.15	76.63	22.9
12	Tobacco products	185.07	169.50	9.2
13	Textiles	106.00	103.28	2.6
14	Wearing apparel	67.91	65.00	4.5
15	Leather and related products	71.64	42.45	68.8
16	Wood and products of wood and cork, except furniture	92.89	99.62	-6.8
17	Paper and paper products	115.97	108.83	6.6
18	Printing and reproduction of recorded products	127.37	128.87	-1.2
19	Coke and refined petroleum products	106.48	114.76	-7.2
20	Chemicals and chemical products	136.45	121.22	12.6
21	Basic pharmaceutical products and pharmaceutical preparations	284.74	294.25	-3.2
22	Rubber and plastic products	130.34	121.90	6.9
23	Other non-metallic mineral products	139.50	122.54	13.8
24	Basic metals	151.56	140.39	8.0
25	Fabricated metal products, except machinery and equipment	130.91	106.62	22.8
26	Computers, electronic and optical products	277.71	141.05	96.9
27	Electrical equipment	165.47	125.76	31.6
28	Machinery and equipment n. e. c.	134.62	97.59	37.9
29	Motor vehicles, trailers and semi-trailers	103.89	98.74	5.2
30	Other transport equipment	42.99	29.86	44.0
31	Furniture	135.62	86.73	56.4
32	Other manufacturing	113.66	104.65	8.6
33	Repair and installation of machinery and equipment	113.66	113.19	0.4
D	ELECTRICITY SUPPLY	97.35	121.08	-19.6
35	Electricity supply	97.35	121.08	-19.6
E	WATER SUPPLY	95.38	94.16	1.3
36	Water collection, treatment and supply	95.38	94.16	1.3
MAIN INDUSTRIAL GROUPINGS				
1	Energy	99.89	116.20	-14.0
2	Intermediate goods	128.00	114.63	11.7
3	Capital goods	136.82	111.99	22.2
4	Consumer Durables	146.42	77.03	90.1
5	Consumer Non-Durables	140.50	132.03	6.4

* Provisional data

Note: The indices are rounded up to two decimal digits when published and percentage changes up to one decimal digit when published.

Table 4. Monthly rate of change of the seasonally adjusted Industrial Production Index

Base year: 2015=100.0					
Code		Division	February 2025	January 2025	Rate of change (%) Feb. 2025 / Jan. 2025
OVERALL INDEX			125.64	129.86	-3.3
B	MINING AND QUARRYING		102.75	101.34	1.4
05-06-09	Mining of coal and lignite – Extraction of crude petroleum and natural gas – Mining support service activities		-	-	-
07	Mining of metal ores		109.37	111.10	-1.6
08	Other mining and quarrying		117.24	114.47	2.4
C	MANUFACTURING		135.33	137.31	-1.4
10	Food		125.87	125.02	0.7
11	Beverages		108.12	107.60	0.5
12	Tobacco products		180.02	177.63	1.3
13	Textiles		110.14	112.33	-1.9
14	Wearing apparel		66.41	71.39	-7.0
15	Leather and related products		81.25	78.45	3.6
16	Wood and products of wood and cork, except furniture		98.03	122.51	-20.0
17	Paper and paper products		113.55	111.78	1.6
18	Printing and reproduction of recorded products		132.20	145.45	-9.1
19	Coke and refined petroleum products		104.69	114.40	-8.5
20	Chemicals and chemical products		132.63	136.52	-2.8
21	Basic pharmaceutical products and pharmaceutical preparations		281.81	298.69	-5.7
22	Rubber and plastic products		127.29	132.15	-3.7
23	Other non-metallic mineral products		147.52	148.04	-0.3
24	Basic metals		146.02	143.47	1.8
25	Fabricated metal products, except machinery and equipment		141.52	139.33	1.6
26	Computers, electronic and optical products		250.96	190.53	31.7
27	Electrical equipment		164.30	145.52	12.9
28	Machinery and equipment n. e. c.		134.29	141.30	-5.0
29	Motor vehicles, trailers and semi-trailers		121.31	178.38	-32.0
30	Other transport equipment		60.95	60.14	1.3
31	Furniture		152.12	143.64	5.9
32	Other manufacturing		134.60	133.61	0.7
33	Repair and installation of machinery and equipment		136.89	146.32	-6.4
D	ELECTRICITY SUPPLY		99.65	111.67	-10.8
35	Electricity supply		99.65	111.67	-10.8
E	WATER SUPPLY		102.23	102.43	-0.2
36	Water collection, treatment and supply		102.23	102.43	-0.2
MAIN INDUSTRIAL GROUPINGS					
1	Energy		101.66	111.48	-8.8
2	Intermediate goods		128.85	129.38	-0.4
3	Capital goods		148.88	154.91	-3.9
4	Consumer Durables		159.02	127.81	24.4
5	Consumer Non-Durables		144.28	145.95	-1.1

Notes:

1. The indices are rounded up to two decimal digits when published and percentage changes up to one decimal digit when published.
2. The whole time-series with seasonally adjusted indices is recalculated every time a new observation is added in the time-series.
3. The composed index of divisions 05-06-09 is not seasonally adjusted.

Table 5. Evolution of the Overall Industrial Production Index
(Working day adjusted data, according to the real number of working days)

Base year: 2015=100.0

Year and month		Overall Index	Monthly rate of change (%)	Annual rate of change (%)	12-month average index (moving average)	Rate of change of the 12-month average index (%)
2023:	1	105.63	-10.5	0.7	118.83	2.5
	2	120.18	13.8	5.3	119.33	2.5
	3	125.66	4.6	0.7	119.41	1.8
	4	117.60	-6.4	4.4	119.82	2.5
	5	120.86	2.8	2.3	120.05	2.4
	6	124.05	2.6	-3.0	119.73	1.3
	7	134.56	8.5	-1.7	119.54	0.5
	8	116.61	-13.3	-0.2	119.53	0.1
	9	123.27	5.7	1.8	119.71	0.4
	10	126.57	2.7	10.3	120.70	1.4
	11	119.19	-5.8	3.3	121.01	1.8
	12	123.30	3.4	4.5	121.46	2.3
Annual average		121.46				
2024*:	1	116.56	-5.5	10.3	122.37	3.0
	2	122.64	5.2	2.1	122.57	2.7
	3	124.87	1.8	-0.6	122.51	2.6
	4	132.08	5.8	12.3	123.71	3.2
	5	129.14	-2.2	6.8	124.40	3.6
	6	136.13	5.4	9.7	125.41	4.7
	7	148.32	9.0	10.2	126.56	5.9
	8	120.85	-18.5	3.6	126.91	6.2
	9	126.42	4.6	2.6	127.17	6.2
	10	123.34	-2.4	-2.6	126.90	5.1
	11	123.15	-0.2	3.3	127.23	5.1
	12	130.42	5.9	5.8	127.83	5.2
Annual average		127.83				
2025*:	1	119.70	-8.2	2.7	128.09	4.7
	2	122.48	2.3	-0.1	128.07	4.5

* Provisional data

Note: The indices are rounded up to two decimal digits when published and percentage changes up to one decimal digit when published.

Table 6. Monthly evolution of the seasonally adjusted Overall Industrial Production Index and Main Industrial Groupings

Base year: 2015=100.0

Year and month		Overall Index		Energy		Intermediate goods		Capital goods		Consumer durables		Consumer non-durables	
		Index	Monthly rate of change (%)	Index	Monthly rate of change (%)	Index	Monthly rate of change (%)	Index	Monthly rate of change (%)	Index	Monthly rate of change (%)	Index	Monthly rate of change (%)
2023:	1	115.95	-2.1	91.38	-9.7	120.32	0.3	141.47	5.6	140.05	-9.0	134.31	1.7
	2	123.17	6.2	109.81	20.2	118.15	-1.8	143.67	1.6	140.86	0.6	136.92	1.9
	3	123.82	0.5	106.54	-3.0	124.01	5.0	142.68	-0.7	142.03	0.8	138.63	1.2
	4	119.09	-3.8	107.73	1.1	118.15	-4.7	131.46	-7.9	139.72	-1.6	129.23	-6.8
	5	119.77	0.6	99.38	-7.8	119.96	1.5	146.82	11.7	139.78	0.0	136.10	5.3
	6	118.30	-1.2	95.70	-3.7	119.81	-0.1	142.74	-2.8	146.69	4.9	136.55	0.3
	7	120.18	1.6	108.39	13.3	115.88	-3.3	132.31	-7.3	143.48	-2.2	133.38	-2.3
	8	122.84	2.2	109.72	1.2	119.37	3.0	146.02	10.4	143.17	-0.2	134.23	0.6
	9	120.83	-1.6	110.76	0.9	114.31	-4.2	138.44	-5.2	153.25	7.0	131.76	-1.8
	10	128.39	6.3	112.82	1.9	123.87	8.4	145.88	5.4	162.27	5.9	144.39	9.6
	11	122.83	-4.3	104.28	-7.6	122.33	-1.2	148.81	2.0	167.49	3.2	136.53	-5.4
	12	123.07	0.2	102.74	-1.5	126.53	3.4	151.21	1.6	160.32	-4.3	135.65	-0.6
Annual average		121.52		104.94		120.22		142.62		148.26		135.64	
2024:	1	126.80	3.0	109.05	6.1	125.79	-0.6	138.98	-8.1	181.38	13.1	143.06	5.5
	2	125.71	-0.9	108.22	-0.8	129.92	3.3	141.46	1.8	151.10	-16.7	138.14	-3.4
	3	123.31	-1.9	108.51	0.3	123.06	-5.3	142.39	0.7	164.41	8.8	134.29	-2.8
	4	133.34	8.1	121.37	11.9	128.55	4.5	148.68	4.4	163.68	-0.4	145.93	8.7
	5	128.40	-3.7	116.50	-4.0	122.23	-4.9	139.16	-6.4	153.64	-6.1	143.45	-1.7
	6	130.26	1.4	124.55	6.9	121.93	-0.3	141.32	1.6	143.37	-6.7	140.02	-2.4
	7	132.17	1.5	120.25	-3.5	127.51	4.6	146.87	3.9	155.71	8.6	145.11	3.6
	8	126.95	-3.9	113.22	-5.8	124.55	-2.3	134.75	-8.3	125.86	-19.2	143.39	-1.2
	9	124.15	-2.2	103.50	-8.6	127.64	2.5	144.97	7.6	149.84	19.1	139.59	-2.6
	10	125.15	0.8	106.75	3.1	127.81	0.1	144.54	-0.3	130.15	-13.1	139.94	0.3
	11	127.29	1.7	115.49	8.2	125.57	-1.7	142.45	-1.4	137.06	5.3	138.39	-1.1
	12	130.28	2.3	110.91	-4.0	130.40	3.8	147.94	3.9	205.68	50.1	145.11	4.9
Annual average		127.82		113.19		126.25		142.79		155.16		141.37	
2025:	1	129.86	-0.3	111.48	0.5	129.38	-0.8	154.91	4.7	127.81	-37.9	145.95	0.6
	2	125.64	-3.3	101.66	-8.8	128.85	-0.4	148.88	-3.9	159.02	24.4	144.28	-1.1

Notes:

1. The indices are rounded up to two decimal digits when published and percentage changes up to one decimal digit when published.
2. The whole time-series with seasonally adjusted indices is recalculated every time a new observation is added in the time-series.

METHODOLOGICAL NOTES

Generally	The Industrial Production Index (IPI) in Greece has been compiled by the Hellenic Statistical Authority (ELSTAT) from 1959 onwards.
Purpose of the index	The objective of the index is to compare the magnitude (volume) of the output in the current month in the mining and quarrying, manufacturing, electricity and water supply divisions with the corresponding output of a given fixed period, which is considered as base period. The Industrial Production Index shows the evolution of the value added of the production factors cost, at constant prices.
Legal framework	The compilation of the IPI is based on the framework of the implementation of Council Regulation (EC) No 1165/1998 concerning short-term statistics (STS-R). Furthermore, the IPI is governed by Regulation (EC) No 1893/2006 of the European Parliament and of the Council, by Commission Regulation (EC) No 656/2007, by Council Regulation (EC) No 451/2008, by Regulation (EU) No 2019/2152 of the European Parliament and of the Council on European business statistics, as well as Commission Implementing Regulation (EU) No 2020/1197 laying down technical specifications and arrangements pursuant to Regulation (EU) No 2019/2152.
Reference period	Month.
Base year	2015=100.0.
Revision	The IPI is a fixed base index. The Industrial Production Index was currently revised with new base year 2015 (2015=100.0) according to the provisions of Council Regulation No 1165/1998 concerning short-term statistics. Short-term indices are revised every five (5) years, particularly in calendar years ending in 0 or 5.
Statistical classifications	At the level of branches of economic activities, the statistical classification of economic activities NACE Rev.2 of EU was used (Regulation No 1893/2006), while at the level of main industrial groupings, the allocation of two-digit and three-digit NACE Rev. 2 headings to categories of aggregate classification was used, in accordance with Council Regulation No 656/2007. At product level, the statistical classification CPA 2008 of EU was used, according to Council Regulation No 451/2008.
Geographical coverage	The index covers the whole Country.
Coverage of economic activities	The index covers all the sections of industry, the main industrial groups, as well as all levels of economic activity.
Statistical survey	The data are collected from a sample of 1,263 enterprises. The survey covers 325 products and the measurement of the surveyed products is made in terms of output quantities or in terms of production value or turnover, according to the specific features in each branch of economic activity.
Seasonal adjustment	Seasonal adjustment is the procedure followed to remove the impact of seasonality on the time-series (i.e. the impact of monthly effects, e.g. holidays, tourist period etc.), in order to improve comparability over time. The method applied is TRAMO-SEATS with the use of JDemetra+ 2.0.0. For the seasonal adjustment of the Industrial Production Index at 2-digit level of NACE Rev.2, at section level (B – Mining and Quarrying, C – Manufacturing, D – Electricity and E – Water Supply) and for the Main Industrial Groupings (MIGs), the direct approach is applied, namely each time-series is seasonally adjusted independently. For the overall Industrial Production Index, the indirect approach is applied, with the seasonally adjusted IPI being computed by aggregating the seasonally adjusted MIGs using appropriate weights.
Publication of data	The revised IPI with the new base year 2015 (2015=100.0) is released since July 2019, with May 2019 as the first reference month. Data with base year 2015=100.0 are available from January 2000 onwards.
References	More information about the methodology concerning the compilation and calculation of the index and the time series are available on the website of the Hellenic Statistical Authority (ELSTAT) (http://www.statistics.gr/en/statistics/-/publication/DKT21/-).