



PRESS RELEASE

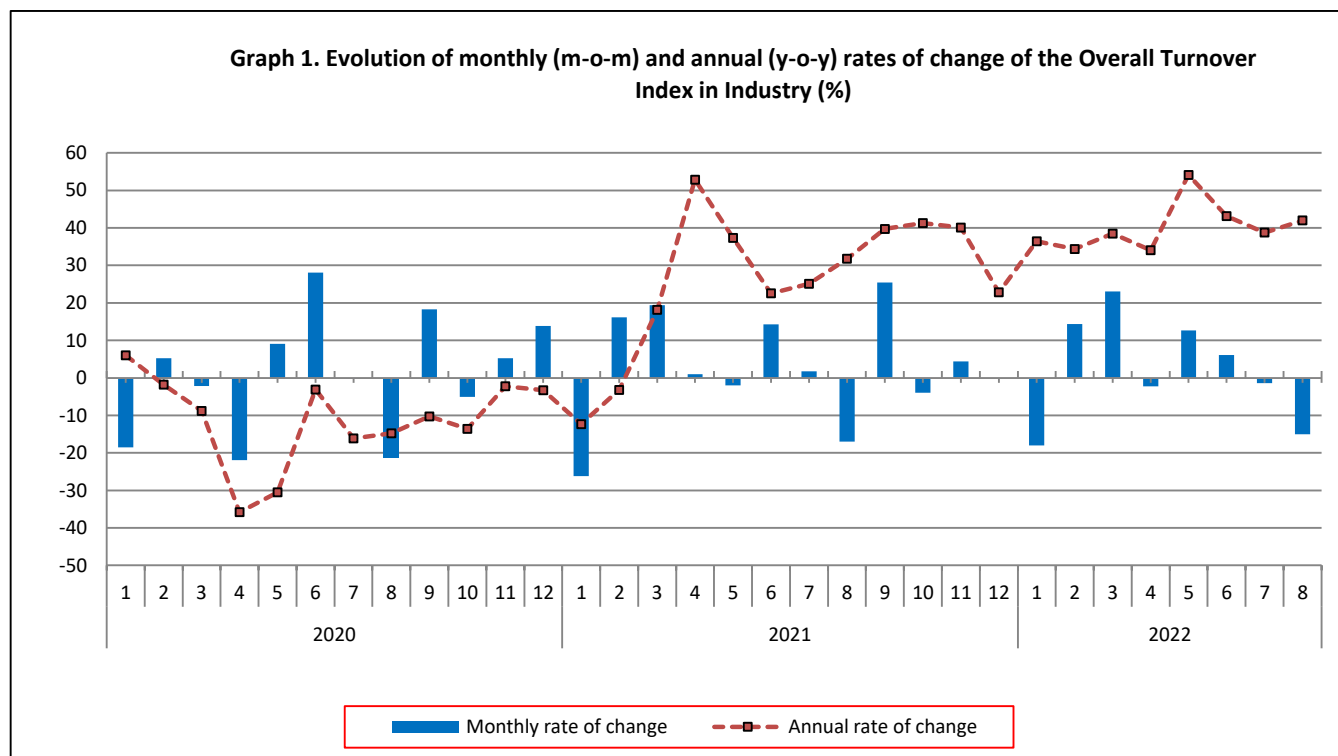
TURNOVER INDEX IN INDUSTRY: August 2022, y-o-y increase of 42.0%

The Hellenic Statistical Authority announces the Turnover Index in Industry with base year 2015=100.0 for August 2022, the evolution of which on the basis of provisional data, is as follows:

The Overall Turnover Index in Industry (both Domestic and Non-Domestic Market) in August 2022 recorded an increase of 42.0% compared with the corresponding index of August 2021. The Overall Turnover Index in Industry in August 2021 increased by 31.8% compared with the corresponding index in August 2020 (Table 1).

The Overall Turnover Index in Industry in August 2022, compared with July 2022, recorded a decrease of 15.0% (Table 6).

The average Overall Turnover Index in Industry for the 12-month period from September 2021 to August 2022 increased by 38.9%, compared with the corresponding index of the 12-month period from September 2020 to August 2021. The average Overall Turnover Index in Industry for the 12-month period from September 2020 to August 2021 increased by 10.1% compared with the corresponding index of the 12-month period from September 2019 to August 2020 (Table 13).



Information on methodological issues:

Division of Business Statistics
Section of Manufacture-Construction Indices and Industrial Products
Head of the Section : Diamantaki Aikaterini
Tel: +30 213 135 2056
E-mail: a.diamantaki@statistics.gr

Information on data provision:

Tel: +30 213 135 2022, 2308, 2310
E-mail: data.dissem@statistics.gr

Evolution of the Overall Turnover Index in Industry in August 2022

I. Annual changes of the Overall Turnover Index in Industry: August 2022/August 2021

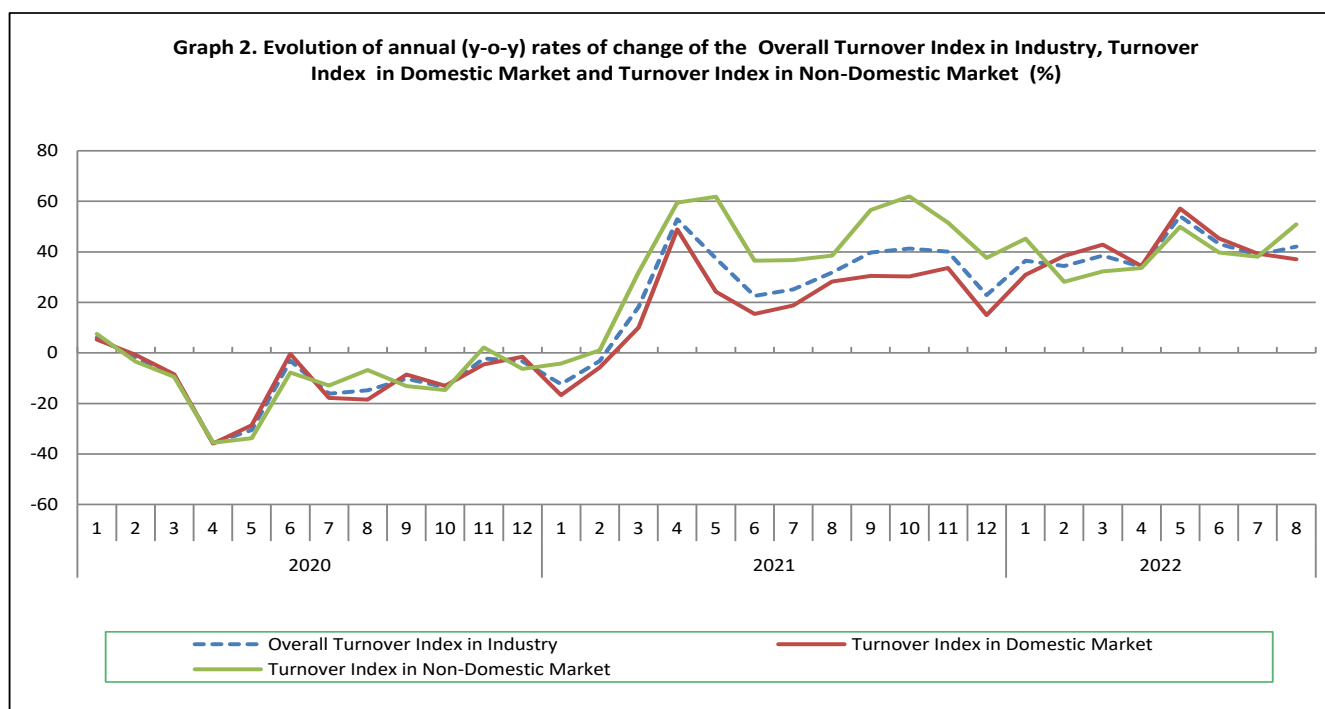
The 42.0% increase in the Overall Turnover Index in Industry in August 2022, compared with the corresponding index in August 2021, was due to the following:

1. Changes in the sub-indices of the industrial sections (Table 1):

- The Turnover Index in Manufacturing increased by 42.3%. The increase was mainly the result of the annual changes of the sub-indices in the following 2-digit divisions: coke and refined petroleum products, chemicals and chemical products, basic metals, food.
- The Turnover Index in Mining and quarrying increased by 13.5%. The increase was the result of the annual changes of the sub-indices in the following 2-digit divisions: mining of metal ores, other mining and quarrying products.

2. Changes in the sub-indices in Domestic and Non-Domestic Markets:

- The Turnover Index in Industry in Non-Domestic Market increased by 50.9% (Table 3).
- The Turnover Index in Industry in Domestic Market increased by 37.0% (Table 2).



II. Annual changes of the Turnover Index in Industry in Domestic Market: August 2022/August 2021

The 37.0% increase of the Turnover Index in Industry in Domestic Market in August 2022, compared with August 2021, is due to the annual changes in the sub-indices of the following industrial sections (Table 2):

- The Turnover Index in Mining and quarrying increased by 38.0%. The increase was mainly the result of the annual changes of the sub-indices in the following 2-digit divisions: other mining and quarrying products, mining of metal ores.
- The Turnover Index in Manufacturing increased by 37.0%. The increase was mainly the result of the annual changes of the sub-indices in the following 2-digit divisions: coke and refined petroleum products, chemicals and chemical products, electrical equipment, food.

III. Annual changes of the Turnover Index in Industry in Non-Domestic Market: August 2022/August 2021

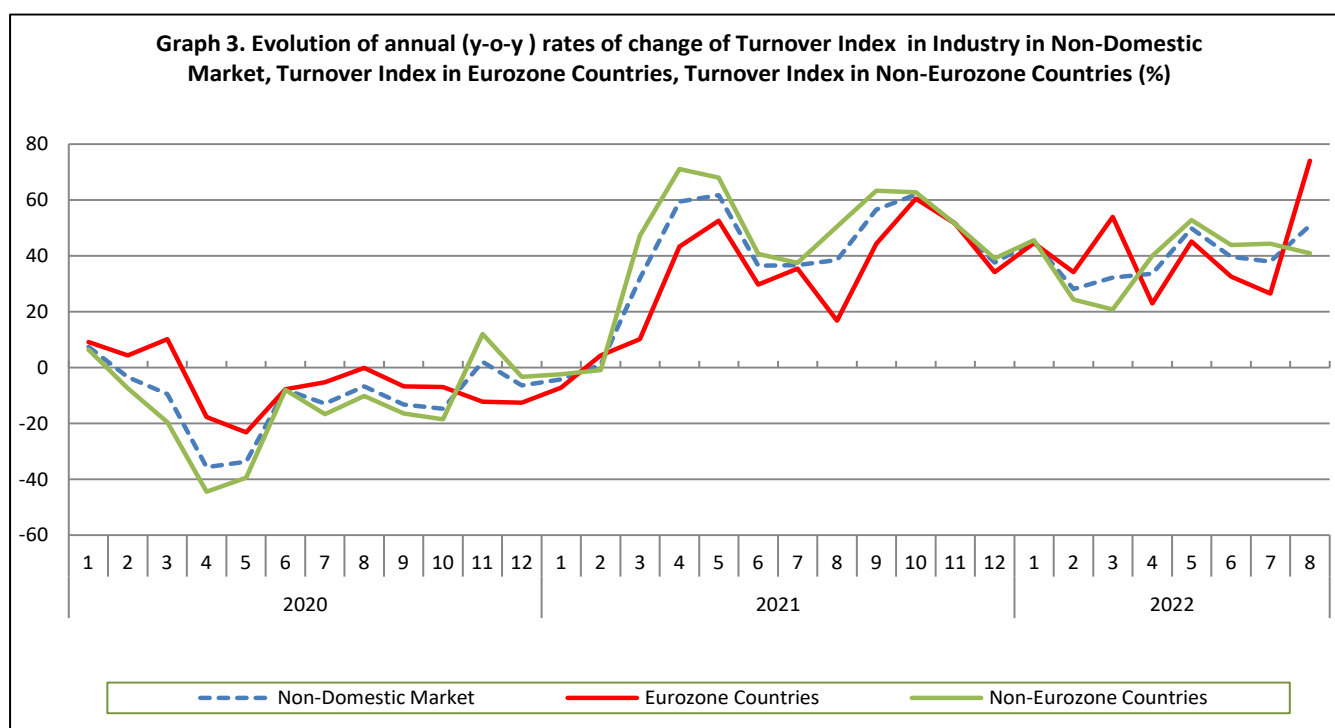
The 50.9% increase of the Turnover Index in Industry in Non-Domestic Market in August 2022, compared with August 2021, was due to the following:

1. Changes in the sub-indices of the industrial sections (Table 3):

- The Turnover Index in Manufacturing increased by 51.9%. The increase was mainly the result of the annual changes of the sub-indices in the following 2-digit divisions: coke and refined petroleum products, chemicals and chemical products, food, basic metals.
- The Turnover Index in Mining and quarrying increased by 2.1%. The increase was the result of the annual changes of the sub-indices in the following 2-digit divisions: mining of metal ores, other mining and quarrying products.

2. Changes in the sub-indices in Eurozone and Non-Eurozone countries:

- The Turnover Index in Industry in Eurozone countries increased by 74.1% (Table 4).
- The Turnover Index in Industry in Non-Eurozone countries increased by 40.9% (Table 5).



IV. Monthly changes of the Overall Turnover Index in Industry: August 2022/ July 2022

The 15.0% decrease of the Overall Turnover Index in Industry in August 2022, compared with the corresponding index in July 2022, was due to the following:

1. Changes in the sub-indices of industrial sections (Table 6):

- The Turnover Index in Manufacturing decreased by 15.1%.
- The Turnover Index in Mining and quarrying decreased by 10.1%.

2. Changes in the sub-indices in Domestic and Non-Domestic Market:

- The Turnover Index in Industry in Non-Domestic Market decreased by 15.4% (Table 8).
- The Turnover Index in Industry in Domestic Market decreased by 14.8% (Table 7).

Table 1. Annual rates of change of the Turnover Index in Industry: Total Market

Base year: 2015=100.0

Code	Division	Weights	August			Rate of change (%)	
			2022*	2021	2020	2022/2021	2021/2020
OVERALL INDEX			163.88	115.40	87.57	42.0	31.8
B	MINING AND QUARRYING	100.00	106.61	93.94	82.09	13.5	14.4
05-06-09	Mining of coal and lignite - Extraction of crude petroleum and natural gas - Mining support service activities	21.19	22.71	109.13	19.14	-79.2	470.0
07	Mining of metal ores	17.56	184.20	95.49	187.59	92.9	-49.1
08	Other mining and quarrying products	61.25	113.39	88.24	73.62	28.5	19.9
C	MANUFACTURING	100.00	164.66	115.69	87.64	42.3	32.0
10	Food	23.39	140.55	112.33	97.62	25.1	15.1
11	Beverages	3.57	181.54	164.45	128.23	10.4	28.2
12	Tobacco products	1.19	160.75	127.12	121.58	26.5	4.6
13	Textiles	1.28	83.17	78.53	71.95	5.9	9.1
14	Wearing apparel	1.80	78.61	77.87	59.76	1.0	30.3
15	Leather and related products	0.34	59.41	41.92	29.95	41.7	40.0
16	Wood and products of wood and cork, except furniture	0.72	107.02	87.08	78.68	22.9	10.7
17	Paper and paper products	2.44	144.71	105.23	94.40	37.5	11.5
18	Printing and reproduction of recorded products	1.17	83.64	76.47	65.43	9.4	16.9
19	Coke and refined petroleum products	28.73	234.62	128.83	75.30	82.1	71.1
20	Chemicals and chemical products	4.43	155.84	106.26	85.63	46.7	24.1
21	Basic pharmaceutical products and pharmaceutical preparations	3.67	122.38	108.91	90.95	12.4	19.7
22	Rubber and plastic products	3.47	119.42	101.93	89.16	17.2	14.3
23	Other non-metallic mineral products	3.31	124.10	99.02	86.32	25.3	14.7
24	Basic metals	7.19	170.05	129.28	98.49	31.5	31.3
25	Fabricated metal products, except machinery and equipment	4.51	105.40	96.44	78.65	9.3	22.6
26	Computers, electronic and optical products	0.78	179.13	152.49	119.06	17.5	28.1
27	Electrical equipment	2.65	173.52	132.67	98.87	30.8	34.2
28	Machinery and equipment n.e.c.	1.56	100.18	87.07	83.39	15.1	4.4
29	Motor vehicles, trailers and semi-trailers	0.23	146.56	108.84	82.29	34.7	32.3
30	Other transport equipment	0.52	83.78	59.92	43.80	39.8	36.8
31	Furniture	0.97	105.00	84.32	83.85	24.5	0.6
32	Other manufacturing	0.66	111.14	89.65	77.86	24.0	15.2
33	Repair and installation of machinery and equipment	1.42	92.37	83.52	78.43	10.6	6.5
MAIN INDUSTRIAL GROUPINGS							
1	Energy	28.57	233.03	128.90	74.90	80.8	72.1
2	Intermediate goods	28.29	148.42	111.80	91.16	32.8	22.6
3	Capital goods	7.00	101.05	92.02	77.74	9.8	18.4
4	Consumer Durables	1.86	127.12	96.07	87.30	32.3	10.0
5	Consumer Non-Durables	34.28	133.84	112.95	97.19	18.5	16.2

* Provisional data

Note: The indices and the percentage changes are rounded up to two and one decimal digits, respectively, when published.

Table 2. Annual rates of change of the Turnover Index in Industry: Domestic Market

Base year: 2015=100.0

Base year 2019 = 100							
Code	Division	Weights	August			Rate of change (%)	
			2022*	2021	2020	2022/2021	2021/2020
OVERALL INDEX			152.41	111.24	86.73	37.0	28.3
B	MINING AND QUARRYING	100.00	72.57	52.57	59.48	38.0	-11.6
05-06-09	Mining of coal and lignite - Extraction of crude petroleum and natural gas - Mining support service activities	31.66	26.84	25.91	22.63	3.6	14.5
07	Mining of metal ores	12.83	95.12	78.25	91.87	21.6	-14.8
08	Other mining and quarrying products	55.50	93.44	61.84	73.00	51.1	-15.3
C	MANUFACTURING	100.00	153.33	111.92	87.05	37.0	28.6
10	Food	28.50	131.99	110.78	95.22	19.1	16.3
11	Beverages	4.86	185.52	169.12	130.60	9.7	29.5
12	Tobacco products	0.51	251.72	214.95	196.11	17.1	9.6
13	Textiles	1.11	68.50	67.42	57.62	1.6	17.0
14	Wearing apparel	1.77	84.94	79.42	58.60	7.0	35.5
15	Leather and related products	0.41	62.57	46.48	32.12	34.6	44.7
16	Wood and products of wood and cork, except furniture	0.96	106.72	83.88	81.06	27.2	3.5
17	Paper and paper products	3.12	141.78	104.46	91.27	35.7	14.5
18	Printing and reproduction of recorded products	1.63	73.49	61.45	53.95	19.6	13.9
19	Coke and refined petroleum products	24.90	218.46	119.06	70.43	83.5	69.0
20	Chemicals and chemical products	4.90	143.83	103.44	83.53	39.1	23.8
21	Basic pharmaceutical products and pharmaceutical preparations	3.85	118.94	110.85	77.07	7.3	43.8
22	Rubber and plastic products	3.31	121.38	100.51	91.80	20.8	9.5
23	Other non-metallic mineral products	3.31	120.25	91.64	87.43	31.2	4.8
24	Basic metals	3.49	176.65	138.00	103.00	28.0	34.0
25	Fabricated metal products, except machinery and equipment	4.25	123.77	112.97	98.42	9.6	14.8
26	Computers, electronic and optical products	0.40	105.38	53.58	87.27	96.7	-38.6
27	Electrical equipment	2.24	174.10	125.84	115.44	38.4	9.0
28	Machinery and equipment n.e.c.	1.46	101.95	95.31	80.10	7.0	19.0
29	Motor vehicles, trailers and semi-trailers	0.27	167.87	118.21	88.52	42.0	33.5
30	Other transport equipment	0.58	51.55	53.62	40.35	-3.9	32.9
31	Furniture	1.35	101.17	81.16	78.13	24.7	3.9
32	Other manufacturing	0.88	113.19	89.57	77.21	26.4	16.0
33	Repair and installation of machinery and equipment	1.92	96.12	88.21	83.65	9.0	5.4
MAIN INDUSTRIAL GROUPINGS							
1	Energy	24.89	216.50	118.12	70.00	83.3	68.7
2	Intermediate goods	25.73	141.99	107.73	92.47	31.8	16.5
3	Capital goods	7.19	102.87	94.12	83.51	9.3	12.7
4	Consumer Durables	2.31	115.09	90.55	80.04	27.1	13.1
5	Consumer Non-Durables	39.88	130.24	113.49	94.44	14.8	20.2

* Provisional data

Note: The indices and the percentage changes are rounded up to two and one decimal digits, respectively, when published.

Table 3. Annual rates of change of the Turnover Index in Industry: Non-Domestic Market

Base year: 2015=100.0

Code	Division	Weights	August			Rate of change (%)	
			2022*	2021	2020	2022/2021	2021/2020
OVERALL INDEX			186.48	123.60	89.22	50.9	38.5
B	MINING AND QUARRYING	100.00	151.03	147.93	111.61	2.1	32.5
05-06-09	Mining of coal and lignite - Extraction of crude petroleum and natural gas - Mining support service activities	7.53	0.00	565.97	0.00	-100.0	-
07	Mining of metal ores	23.74	247.05	107.66	255.13	129.5	-57.8
08	Other mining and quarrying products	68.74	134.41	116.05	74.27	15.8	56.3
C	MANUFACTURING	100.00	187.10	123.18	88.83	51.9	38.7
10	Food	13.27	176.96	118.92	107.86	48.8	10.3
11	Beverages	1.01	143.64	119.86	105.64	19.8	13.5
12	Tobacco products	2.53	124.07	91.71	91.53	35.3	0.2
13	Textiles	1.61	103.29	93.77	91.62	10.2	2.3
14	Wearing apparel	1.86	66.69	74.95	61.95	-11.0	21.0
15	Leather and related products	0.19	45.83	22.33	20.61	105.3	8.3
16	Wood and products of wood and cork, except furniture	0.24	109.39	112.43	59.76	-2.7	88.1
17	Paper and paper products	1.11	161.04	109.51	111.82	47.1	-2.1
18	Printing and reproduction of recorded products	0.26	210.08	263.53	208.50	-20.3	26.4
19	Coke and refined petroleum products	36.32	256.58	142.11	81.91	80.6	73.5
20	Chemicals and chemical products	3.50	189.09	114.09	91.43	65.7	24.8
21	Basic pharmaceutical products and pharmaceutical preparations	3.30	130.34	104.42	123.00	24.8	-15.1
22	Rubber and plastic products	3.79	116.02	104.39	84.59	11.1	23.4
23	Other non-metallic mineral products	3.31	131.74	113.65	84.11	15.9	35.1
24	Basic metals	14.54	166.91	125.13	96.35	33.4	29.9
25	Fabricated metal products, except machinery and equipment	5.03	74.61	68.73	45.52	8.6	51.0
26	Computers, electronic and optical products	1.52	217.50	203.95	135.61	6.6	50.4
27	Electrical equipment	3.44	172.76	141.50	77.46	22.1	82.7
28	Machinery and equipment n.e.c.	1.76	97.27	73.53	88.81	32.3	-17.2
29	Motor vehicles, trailers and semi-trailers	0.14	63.54	72.35	58.01	-12.2	24.7
30	Other transport equipment	0.40	175.63	77.88	53.65	125.5	45.2
31	Furniture	0.21	153.78	124.55	156.68	23.5	-20.5
32	Other manufacturing	0.22	95.28	90.30	82.87	5.5	9.0
33	Repair and installation of machinery and equipment	0.43	59.49	42.33	32.55	40.5	30.0
MAIN INDUSTRIAL GROUPINGS							
1	Energy	35.82	255.65	143.64	81.61	78.0	76.0
2	Intermediate goods	33.33	158.21	117.99	89.17	34.1	32.3
3	Capital goods	6.62	97.17	87.53	65.40	11.0	33.8
4	Consumer Durables	0.98	183.09	121.75	121.10	50.4	0.5
5	Consumer Non-Durables	23.25	146.00	111.11	106.47	31.4	4.4

* Provisional data

Note: The indices and the percentage changes are rounded up to two and one decimal digits, respectively, when published.

Table 4. Annual rates of change of the Turnover Index in Industry: Eurozone Countries

Base year: 2015=100.0

CodeSections and main groupings		August			Rate of change (%)	
		2022*	2021	2020	2022/2021	2021/2020
OVERALL INDEX		186.40	107.09	91.69	74.1	16.8
INDUSTRIAL SECTIONS						
B	MINING AND QUARRYING	182.57	267.19	56.97	-31.7	369.0
C	MANUFACTURING	186.48	103.88	92.39	79.5	12.4
MAIN INDUSTRIAL GROUPINGS						
1	Energy	299.44	74.64	86.65	301.2	-13.9
2	Intermediate goods	166.78	119.51	90.71	39.6	31.7
3	Capital goods	85.63	90.88	57.54	-5.8	57.9
4	Consumer Durables	271.86	144.30	121.26	88.4	19.0
5	Consumer Non-Durables	141.67	116.61	100.31	21.5	16.3

* Provisional data

Table 5. Annual rates of change of the Turnover Index in Industry: Non-Eurozone Countries

Base year: 2015=100.0

CodeSections and main groupings		August			Rate of change (%)	
		2022*	2021	2020	2022/2021	2021/2020
OVERALL INDEX		186.52	132.38	87.91	40.9	50.6
INDUSTRIAL SECTIONS						
B	MINING AND QUARRYING	130.32	69.64	147.47	87.1	-52.8
C	MANUFACTURING	187.43	133.39	86.95	40.5	53.4
MAIN INDUSTRIAL GROUPINGS						
1	Energy	243.04	163.52	80.16	48.6	104.0
2	Intermediate goods	152.63	117.01	88.16	30.4	32.7
3	Capital goods	101.08	86.40	68.07	17.0	26.9
4	Consumer Durables	121.79	106.17	120.99	14.7	-12.2
5	Consumer Non-Durables	150.21	105.76	112.48	42.0	-6.0

* Provisional data

Note: The indices and the percentage changes are rounded up to two and one decimal digits, respectively, when published.

Table 6. Monthly rate of change of the Turnover Index in Industry: Total Market

Base year: 2015=100.0

Code	Sections and main groupings	August 2022*	July 2022**	Rate of change (%) August 2022/July 2022
OVERALL INDEX		163.88	192.90	-15.0
INDUSTRIAL SECTIONS				
B	MINING AND QUARRYING	106.61	118.54	-10.1
C	MANUFACTURING	164.66	193.90	-15.1
MAIN INDUSTRIAL GROUPINGS				
1	Energy	233.03	244.81	-4.8
2	Intermediate goods	148.42	187.04	-20.6
3	Capital goods	101.05	153.93	-34.4
4	Consumer Durables	127.12	160.68	-20.9
5	Consumer Non-Durables	133.84	164.17	-18.5

Table 7. Monthly rate of change of the Turnover Index in Industry: Domestic Market

Base year: 2015=100.0

Code	Sections and main groupings	August 2022*	July 2022**	Rate of change (%) August 2022/July 2022
OVERALL INDEX		152.41	178.87	-14.8
INDUSTRIAL SECTIONS				
B	MINING AND QUARRYING	72.57	98.77	-26.5
C	MANUFACTURING	153.33	179.80	-14.7
MAIN INDUSTRIAL GROUPINGS				
1	Energy	216.50	221.62	-2.3
2	Intermediate goods	141.99	185.31	-23.4
3	Capital goods	102.87	148.70	-30.8
4	Consumer Durables	115.09	153.47	-25.0
5	Consumer Non-Durables	130.24	154.95	-15.9

Table 8. Monthly rate of change of the Turnover Index in Industry: Non-Domestic Market

Base year: 2015=100.0

Code	Sections and main groupings	August 2022*	July 2022**	Rate of change (%) August 2022/July 2022
OVERALL INDEX		186.48	220.52	-15.4
INDUSTRIAL SECTIONS				
B	MINING AND QUARRYING	151.03	144.35	4.6
C	MANUFACTURING	187.10	221.86	-15.7
MAIN INDUSTRIAL GROUPINGS				
1	Energy	255.65	276.55	-7.6
2	Intermediate goods	158.21	189.66	-16.6
3	Capital goods	97.17	165.13	-41.2
4	Consumer Durables	183.09	194.28	-5.8
5	Consumer Non-Durables	146.00	195.32	-25.2

* Provisional data ** Revised data

Note: The indices and the percentage changes are rounded up to two and one decimal digits, respectively, when published.

Table 9. Monthly rate of change of the Turnover Index in Industry: Eurozone Countries

Base year: 2015=100.0

Code	Sections and main groupings	August 2022*	July 2022**	Rate of change (%) August 2022/July 2022
OVERALL INDEX		186.40	208.14	-10.4
INDUSTRIAL SECTIONS				
B	MINING AND QUARRYING	182.57	132.47	37.8
C	MANUFACTURING	186.48	209.66	-11.1
MAIN INDUSTRIAL GROUPINGS				
1	Energy	299.44	228.96	30.8
2	Intermediate goods	166.78	195.13	-14.5
3	Capital goods	85.63	176.91	-51.6
4	Consumer Durables	271.86	327.70	-17.0
5	Consumer Non-Durables	141.67	208.93	-32.2

* Provisional data ** Revised data

Table 10. Monthly rate of change of the Turnover Index in Industry: Non-Eurozone Countries

Base year: 2015=100.0

Code	Sections and main groupings	August 2022*	July 2022**	Rate of change (%) August 2022/July 2022
OVERALL INDEX		186.52	227.10	-17.9
INDUSTRIAL SECTIONS				
B	MINING AND QUARRYING	130.32	152.14	-14.3
C	MANUFACTURING	187.43	228.31	-17.9
MAIN INDUSTRIAL GROUPINGS				
1	Energy	243.04	290.25	-16.3
2	Intermediate goods	152.63	186.09	-18.0
3	Capital goods	101.08	161.13	-37.3
4	Consumer Durables	121.79	102.14	19.2
5	Consumer Non-Durables	150.21	182.08	-17.5

* Provisional data ** Revised data

Note: The indices and the percentage changes are rounded up to two and one decimal digits, respectively, when published.

Table 11. Evolution of the Turnover Index in Industry (y-o-y changes): Total Market

Base year: 2015=100.0

Year and month		Overall Index (Total Market)		Turnover Index in Industry in Domestic Market		Turnover Index in Industry in Non-Domestic Market	
		Index	Annual rate of change (%)	Index	Annual rate of change (%)	Index	Annual rate of change (%)
2021:	8	115.40	31.8	111.24	28.3	123.60	38.5
	9	144.77	39.7	131.73	30.5	170.46	56.6
	10	139.01	41.3	126.17	30.3	164.29	62.0
	11	145.11	40.1	133.06	33.6	168.83	51.5
	12	144.88	22.8	133.09	14.9	168.12	37.5
2022*:	1	118.84	36.4	105.71	30.9	144.71	45.2
	2	135.94	34.4	128.47	38.4	150.66	28.1
	3	167.26	38.5	152.85	42.8	195.65	32.3
	4	163.49	34.1	149.46	34.3	191.13	33.6
	5	184.25	54.1	166.34	57.1	219.52	49.9
	6	195.56	43.2	185.74	45.3	214.91	39.7
	7	192.90	38.8	178.87	39.3	220.52	38.0
	8	163.88	42.0	152.41	37.0	186.48	50.9

*Provisional data

Table 12. Evolution of the Turnover Index in Industry (y-o-y changes): Non-Domestic Market

Base year: 2015=100.0

Year and month		Overall Index (Non-Domestic Market)		Turnover Index in Industry in Eurozone Countries		Turnover Index in Industry in Non-Eurozone Countries	
		Index	Annual rate of change (%)	Index	Annual rate of change (%)	Index	Annual rate of change (%)
2021:	8	123.60	38.5	107.09	16.8	132.38	50.6
	9	170.46	56.6	162.82	44.4	174.52	63.4
	10	164.29	62.0	170.73	60.5	160.86	62.8
	11	168.83	51.5	171.48	51.6	167.42	51.5
	12	168.12	37.5	144.92	34.2	180.45	39.0
2022*:	1	144.71	45.2	156.85	44.6	138.25	45.6
	2	150.66	28.1	173.48	34.2	138.53	24.4
	3	195.65	32.3	226.46	54.0	179.28	20.8
	4	191.13	33.6	191.57	23.0	190.90	40.1
	5	219.52	49.9	235.04	45.1	211.27	52.8
	6	214.91	39.7	219.02	32.6	212.72	43.9
	7	220.52	38.0	208.14	26.5	227.10	44.4
	8	186.48	50.9	186.40	74.1	186.52	40.9

*Provisional data

Note: The indices and the percentage changes are rounded up to two and one decimal digits, respectively, when published.

Table 13. Average indices and rates of change (%) of the 12-month periods of Turnover Index in Industry: Total Market
Base year: 2015=100.0

Code		Division	Average Indices of 12-month periods			Rate of change (%)	
			Sep. 2021- Aug. 2022*	Sep. 2020- Aug. 2021	Sep. 2019- Aug. 2020	2022/2021	2021/2020
OVERALL INDEX			157.99	113.76	103.36	38.9	10.1
B	MINING AND QUARRYING		105.82	102.40	100.28	3.3	2.1
05-06-09	Mining of coal and lignite - Extraction of crude petroleum and natural gas - Mining support service activities		17.47	35.33	38.63	-50.5	-8.6
07	Mining of metal ores		175.08	164.48	184.84	6.4	-11.0
08	Other mining and quarrying products		116.52	107.81	97.36	8.1	10.7
C	MANUFACTURING		158.70	113.91	103.41	39.3	10.2
10	Food		129.25	108.09	102.60	19.6	5.4
11	Beverages		131.10	111.14	99.48	18.0	11.7
12	Tobacco products		157.65	143.52	132.01	9.8	8.7
13	Textiles		128.32	111.33	98.06	15.3	13.5
14	Wearing apparel		91.83	72.29	76.46	27.0	-5.5
15	Leather and related products		78.65	61.11	69.42	28.7	-12.0
16	Wood and products of wood and cork, except furniture		137.57	109.46	102.31	25.7	7.0
17	Paper and paper products		143.00	113.98	113.41	25.5	0.5
18	Printing and reproduction of recorded products		114.03	92.61	91.00	23.1	1.8
19	Coke and refined petroleum products		182.43	97.19	91.07	87.7	6.7
20	Chemicals and chemical products		171.41	129.68	117.82	32.2	10.1
21	Basic pharmaceutical products and pharmaceutical preparations		200.45	180.67	155.17	10.9	16.4
22	Rubber and plastic products		151.87	121.80	108.00	24.7	12.8
23	Other non-metallic mineral products		139.38	115.48	101.86	20.7	13.4
24	Basic metals		212.64	142.43	117.46	49.3	21.3
25	Fabricated metal products, except machinery and equipment		135.11	113.10	96.19	19.5	17.6
26	Computers, electronic and optical products		212.36	178.59	165.91	18.9	7.6
27	Electrical equipment		207.44	171.66	127.51	20.8	34.6
28	Machinery and equipment n.e.c.		135.50	118.03	103.98	14.8	13.5
29	Motor vehicles, trailers and semi-trailers		167.46	114.32	113.16	46.5	1.0
30	Other transport equipment		89.41	75.59	59.92	18.3	26.2
31	Furniture		145.25	114.76	105.16	26.6	9.1
32	Other manufacturing		126.80	101.32	92.43	25.1	9.6
33	Repair and installation of machinery and equipment		108.63	103.01	96.78	5.5	6.4
MAIN INDUSTRIAL GROUPINGS							
1	Energy		181.19	96.78	90.74	87.2	6.7
2	Intermediate goods		169.81	128.27	110.69	32.4	15.9
3	Capital goods		133.78	116.18	102.97	15.1	12.8
4	Consumer Durables		137.85	110.38	99.88	24.9	10.5
5	Consumer Non-Durables		134.94	115.63	108.10	16.7	7.0

*Provisional data

Note: The indices and the percentage changes are rounded up to two and one decimal digits, respectively, when published.

METHODOLOGICAL NOTES

Generally	The Industrial Turnover Index is an indicator of an enterprise's business cycle showing the monthly evolution of the market of goods and services in industry. The first compilation of the Turnover Index was completed by the Hellenic Statistical Authority in 2006, with base year 2000=100.0 and is compiled from 2000 onwards.
Purpose of the index	The purpose of this index is to measure the monthly activity of the industrial sector in terms of value. Turnover comprises the totals invoiced by the observation units during the reference period and corresponds to the market sales of goods or services supplied to third parties. The purposes and the characteristics of the Turnover Index apply, as well, to the indices for the distinction between domestic and non-domestic turnover.
Legal Framework	The compilation and publication of the Turnover Index is based on the framework of the implementation of Council Regulation (EC) No 1165/1998 concerning short-term statistics (STS-R), as well as Regulation (EC) No 1158/2005 of the European Parliament and of the Council amending Council Regulation (EC) No 1165/1998. Furthermore, this index is governed by Regulation (EC) No 1893/2006 of the European Parliament and of the Council, by Commission Regulation (EC) No 656/2007, by Regulation (EC) No 451/2008 of the Council, by Regulation (EU) No 2019/2152 of the European Parliament and of the Council on European business statistics, as well as Commission Implementing Regulation (EU) No 2020/1197 laying down technical specifications and arrangements pursuant to Regulation (EU) No 2019/2152.
Reference period	Month.
Base year	2015=100.0.
Revision	The latest revision of the Turnover Index in Industry (base year 2015=100.0) took place in the framework of Council Regulation (EC) No 1165/1998 concerning short-term statistics. In accordance with this regulation the index is revised every five years, in years ending in 0 or 5.
Statistical classifications	At the level of classes of economic activities, the statistical classification of economic activities NACE Rev. 2 of EU was used (Regulation No 1893/2006), while at the level of main industrial groupings, the allocation of two-digit and three-digit NACE Rev. 2 headings to categories of aggregate classification was used, in accordance with Commission Regulation No 656/2007.
Geographical coverage	The index covers the whole Country.
Coverage of economic activities	The Turnover Index in Industry is compiled for all activities listed in Sections B (mining and quarrying) and C (manufacturing) of the NACE Rev. 2 statistical classification.
Computation of the Index	The Turnover Index in Industry is a fixed base index. This index is calculated at a first stage at the four-digit level of economic activity and subsequently, with the implementation of appropriate weighting coefficients, the index is calculated at higher levels (three-level and two-level of economic activity) as well as at the level of Main Industrial Groupings (MIGs).
Publication of data	The Turnover Index in Industry (2015=100.0) is released since August 2019 with June 2019 as first reference month. Data with base year 2015=100.0 are available from January 2000 onwards.
References	More information about the methodology concerning the compilation and calculation of the index and for the time series is available on the website of the Hellenic Statistical Authority (ELSTAT) (http://www.statistics.gr/en/statistics/-/publication/DKT24/).