



**HELLENIC REPUBLIC**  
**HELLENIC STATISTICAL AUTHORITY**

Piraeus, 30 March 2021

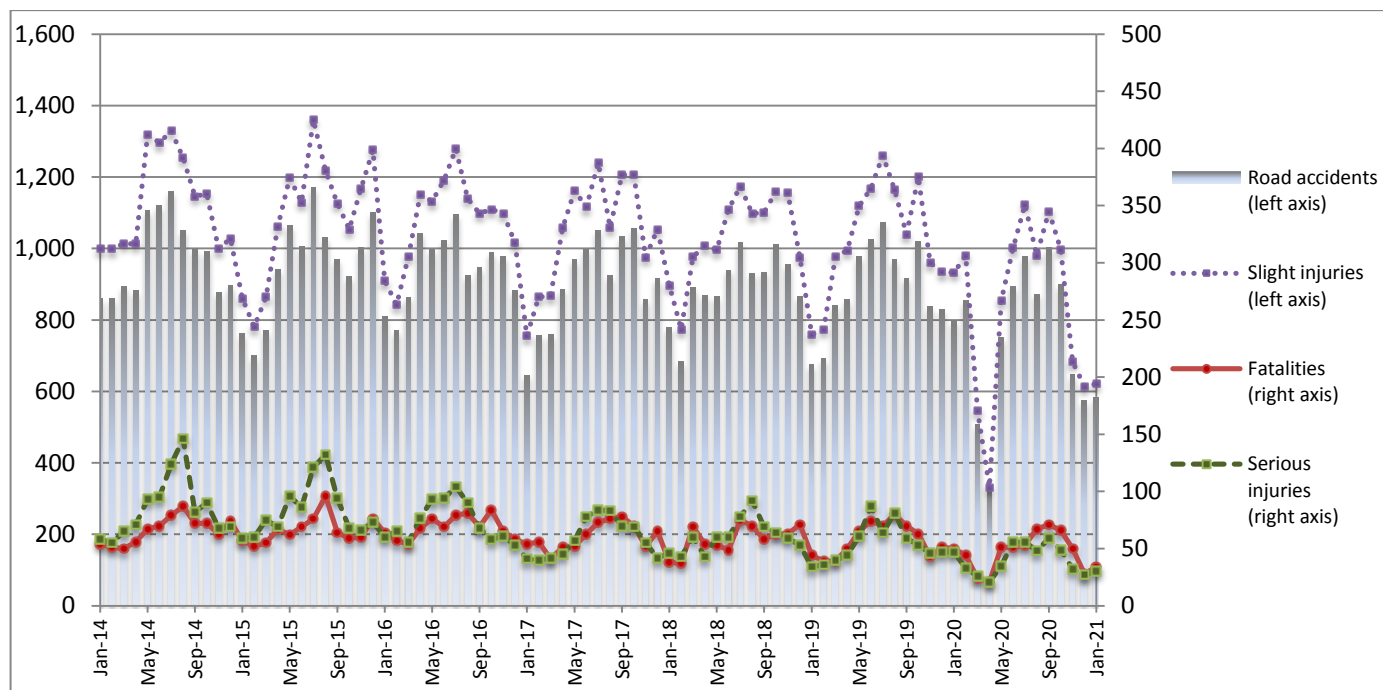
**PRESS RELEASE**

**ROAD TRAFFIC ACCIDENTS: January 2021**

The Hellenic Statistical Authority (ELSTAT) announces provisional<sup>1</sup> data from the survey on “Road Traffic Accidents” for January 2021. In particular, the road traffic accidents which occurred in Greece, resulting in death or injury, decreased by 26.7% in comparison with the corresponding month of 2020 (584 road accidents in January 2021, against 797 road accidents in January 2020).

The casualties of the injury-causing accidents that occurred in January 2021 were as follows: 34 deaths, 30 serious injuries and 621 slight injuries. In contrast, in January 2020 the corresponding figures were: 50 deaths, 47 serious injuries and 932 slight injuries. Therefore, road traffic accident casualties in January 2021 decreased by 32.0% for deaths, by 36.2% for serious injuries and by 33.4% for slight injuries.

**Graph 1: Road traffic accidents and casualties,  
January 2014 - January 2021**



*Provisional data for the period March 2020 – January 2021*

**Information on methodological issues:**

Sectoral Statistics Division  
Transport Statistics Section  
P. Tzortzi, L. Miliara  
Tel: +30 213 135 2187, +30 213 135 3095  
Fax : +30 213 135 2757  
e-mail: [p.tzortzi@statistics.gr](mailto:p.tzortzi@statistics.gr) , [l.miliara@statistics.gr](mailto:l.miliara@statistics.gr)

**Information for data provision:**

Tel: +30 213 135 2022, 2308, 2310  
e-mail: [data.dissem@statistics.gr](mailto:data.dissem@statistics.gr)

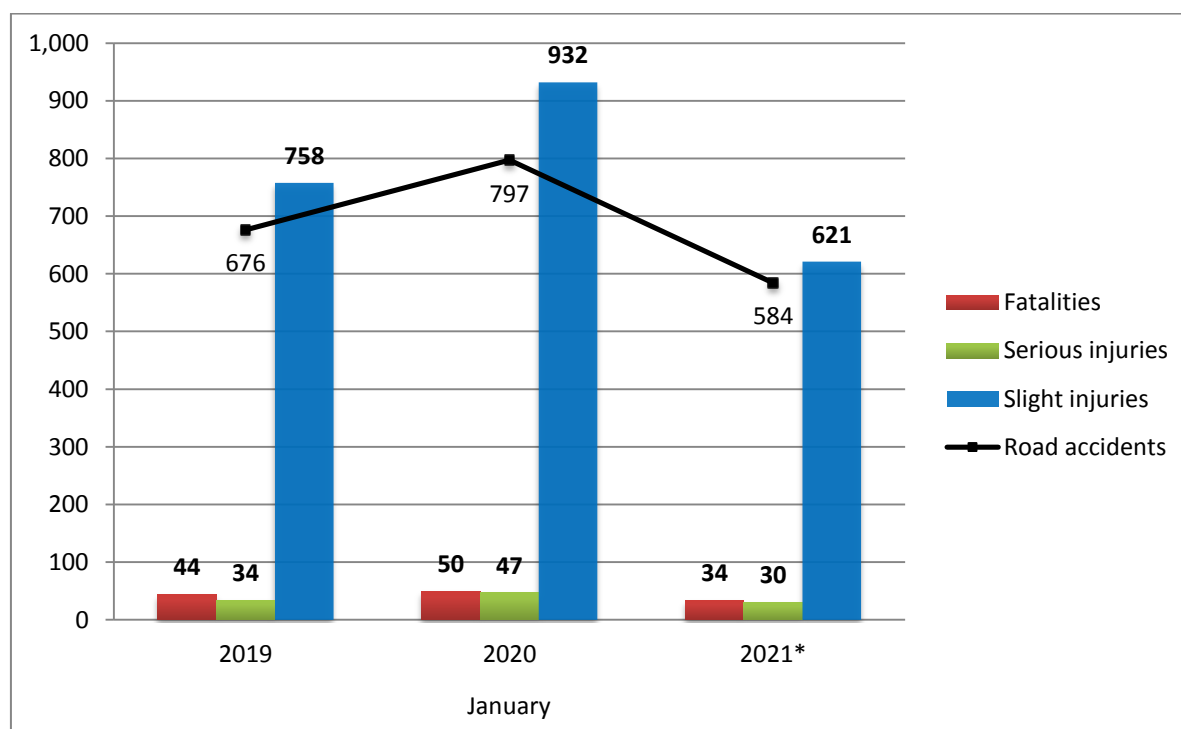
<sup>[1]</sup> Data for the reference year is provisional until the finalization of the annual data, which takes place 10 months after the end of the reference year and is published in the corresponding press release of the following year. During these 10 months the provisional data is updated on the basis of the data of the Road Accident Forms of that year which is transmitted to ELSTAT by Police Authorities (see explanatory notes).

**Table 1: Road traffic accidents and casualties, January 2019 - 2021\***

	January				
	2019	2020	2020/2019 (%)	2021*	2021*/2020 (%)
<b>Road accidents</b>	<b>676</b>	<b>797</b>	<i>17.9</i>	<b>584</b>	<i>-26.7</i>
<b>Fatalities</b>	<b>44</b>	<b>50</b>	<i>13.6</i>	<b>34</b>	<i>-32.0</i>
<b>Total injuries</b>	<b>792</b>	<b>979</b>	<i>23.6</i>	<b>651</b>	<i>-33.5</i>
Serious injuries	34	47	<i>38.2</i>	30	<i>-36.2</i>
Slight injuries	758	932	<i>23.0</i>	621	<i>-33.4</i>

\* Provisional data

**Graph 2: Road traffic accidents and casualties, January 2019 - 2021\***



\* Provisional data

**Table 2: Road traffic accidents and casualties, by region and department, January 2020 and 2021\***

Region and department	Road accidents			Fatalities			Serious injuries			Slight injuries		
	2020	2021*	%	2020	2021*	%	2020	2021*	%	2020	2021*	%
<b>Greece Total</b>	<b>797</b>	<b>584</b>	<b>-26.7</b>	<b>50</b>	<b>34</b>	<b>-32.0</b>	<b>47</b>	<b>30</b>	<b>-36.2</b>	<b>932</b>	<b>621</b>	<b>-33.4</b>
<b>Anatoliki Makedonia and Thraki (East Macedonia and Thrace)</b>	<b>26</b>	<b>11</b>	<b>-57.7</b>	<b>4</b>	<b>1</b>	<b>-75.0</b>	<b>1</b>	<b>3</b>	<b>200.0</b>	<b>28</b>	<b>9</b>	<b>-67.9</b>
Drama	6	3	-50.0	1	1		0	1		8	1	
Evros	3	5	66.7	1	0		0	2		3	5	
Kavala	7	1	-85.7	1	0		0	0		7	1	
Xanthi	6	0	-100.0	0	0		1	0		7	0	
Rodopi	4	2	-50.0	1	0		0	0		3	2	
<b>Kentriki Makedonia (Central Macedonia)</b>	<b>169</b>	<b>87</b>	<b>-48.5</b>	<b>10</b>	<b>4</b>	<b>-60.0</b>	<b>7</b>	<b>2</b>	<b>-71.4</b>	<b>216</b>	<b>94</b>	<b>-56.5</b>
Imathia	1	3	200.0	0	1		0	0		1	3	
Thessaloniki	148	72	-51.4	6	1		4	1		197	77	
Kilkis	9	2	-77.8	3	0		1	0		9	2	
Pella	6	3	-50.0	1	0		1	0		5	4	
Pieria	1	3	200.0	0	0		0	0		1	3	
Serres	2	2	0.0	0	2		0	0		2	3	
Chalkidiki	2	2	0.0	0	0		1	1		1	2	
<b>Dytiki Makedonia (West Macedonia)</b>	<b>6</b>	<b>2</b>	<b>-66.7</b>	<b>1</b>	<b>1</b>	<b>0.0</b>	<b>0</b>	<b>0</b>	<b>-</b>	<b>8</b>	<b>2</b>	<b>-75.0</b>
Grevena	0	0	-	0	0		0	0		0	0	
Kastoria	1	0	-100.0	0	0		0	0		1	0	
Kozani	5	2	-60.0	1	1		0	0		7	2	
Florina	0	0	-	0	0		0	0		0	0	
<b>Ipeiros (Epirus)</b>	<b>10</b>	<b>2</b>	<b>-80.0</b>	<b>3</b>	<b>1</b>	<b>-66.7</b>	<b>1</b>	<b>0</b>	<b>-100.0</b>	<b>7</b>	<b>1</b>	<b>-85.7</b>
Arta	1	0	-100.0	0	0		0	0		2	0	
Thesprotia	0	0	-	0	0		0	0		0	0	
Ioannina	8	0	-100.0	2	0		1	0		5	0	
Preveza	1	2	100.0	1	1		0	0		0	1	
<b>Thessalia (Thessaly)</b>	<b>12</b>	<b>10</b>	<b>-16.7</b>	<b>4</b>	<b>3</b>	<b>-25.0</b>	<b>2</b>	<b>0</b>	<b>-100.0</b>	<b>10</b>	<b>9</b>	<b>-10.0</b>
Karditsa	4	1	-75.0	2	0		0	0		2	1	
Larissa	5	5	0.0	1	2		2	0		3	4	
Magnissia	2	3	50.0	0	1		0	0		5	2	
Trikala	1	1	0.0	1	0		0	0		0	2	
<b>Ionian Nisia (Ionian Islands)</b>	<b>3</b>	<b>10</b>	<b>233.3</b>	<b>0</b>	<b>1</b>	<b>-</b>	<b>0</b>	<b>0</b>	<b>-</b>	<b>7</b>	<b>11</b>	<b>57.1</b>
Zakynthos	1	4	300.0	0	0		0	0		1	6	
Kerkyra	0	2	-	0	0		0	0		0	2	
Kefallinia	0	2	-	0	1		0	0		0	1	
Lefkada	2	2	0.0	0	0		0	0		6	2	

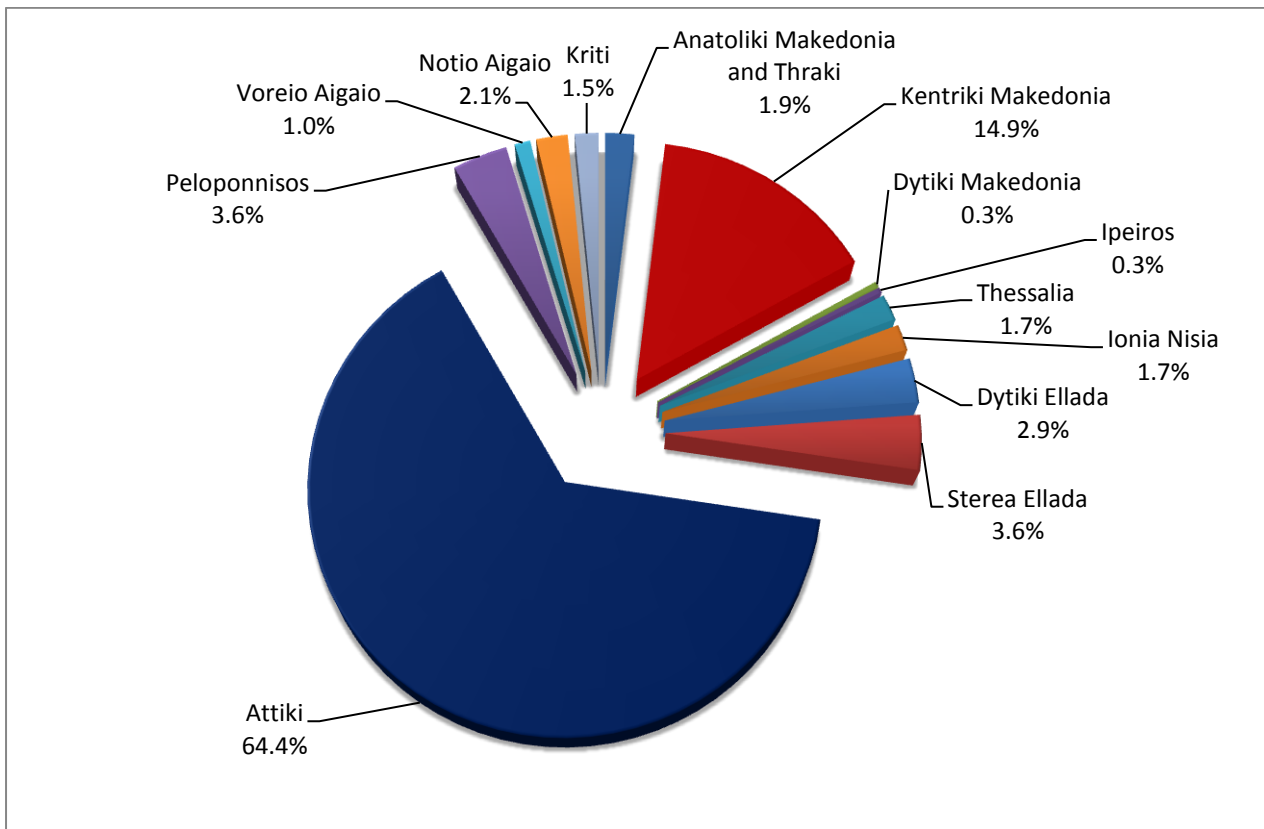
\* Provisional data

**Table 2: Road traffic accidents and casualties, by region and department, January 2020 and 2021\* (Continued)**

Region and department	Road accidents			Fatalities			Serious injuries			Slight injuries		
	2020	2021*	%	2020	2021*	%	2020	2021*	%	2020	2021*	%
<b>Dytiki Ellada (West Greece)</b>	<b>37</b>	<b>17</b>	<b>-54.1</b>	<b>6</b>	<b>2</b>	<b>-66.7</b>	<b>6</b>	<b>1</b>	<b>-83.3</b>	<b>38</b>	<b>22</b>	<b>-42.1</b>
Etolia & Akarnania	13	6	-53.8	1	1		2	1		14	6	
Achaia	16	8	-50.0	5	0		3	0		16	14	
Ilia	8	3	-62.5	0	1		1	0		8	2	
<b>Sterea Ellada</b>	<b>29</b>	<b>21</b>	<b>-27.6</b>	<b>7</b>	<b>1</b>	<b>-85.7</b>	<b>0</b>	<b>2</b>	<b>-</b>	<b>39</b>	<b>23</b>	<b>-41.0</b>
Viotia	7	5	-28.6	5	1		0	0		11	7	
Evia	11	10	-9.1	1	0		0	1		17	11	
Evrytania	0	1	-	0	0		0	0		0	1	
Fthiotida	7	5	-28.6	1	0		0	1		7	4	
Fokida	4	0	-100.0	0	0		0	0		4	0	
<b>Attiki (Attica)</b>	<b>454</b>	<b>376</b>	<b>-17.2</b>	<b>9</b>	<b>12</b>	<b>33.3</b>	<b>20</b>	<b>13</b>	<b>-35.0</b>	<b>522</b>	<b>397</b>	<b>-23.9</b>
<b>Peloponnisos (Peloponnese)</b>	<b>27</b>	<b>21</b>	<b>-22.2</b>	<b>2</b>	<b>5</b>	<b>150.0</b>	<b>2</b>	<b>3</b>	<b>50.0</b>	<b>34</b>	<b>21</b>	<b>-38.2</b>
Argolida	4	3	-25.0	1	0		0	0		5	4	
Arkadia	4	1	-75.0	0	2		1	0		3	1	
Korinthia	11	12	9.1	1	1		1	3		13	13	
Lakonia	1	0	-100.0	0	0		0	0		1	0	
Messinia	7	5	-28.6	0	2		0	0		12	3	
<b>Voreio Aigaio (North Aegean)</b>	<b>6</b>	<b>6</b>	<b>0.0</b>	<b>1</b>	<b>0</b>	<b>-100.0</b>	<b>2</b>	<b>2</b>	<b>0.0</b>	<b>7</b>	<b>6</b>	<b>-14.3</b>
Lesvos	3	5	66.7	1	0		1	2		5	5	
Samos	3	1	-66.7	0	0		1	0		2	1	
Chios	0	0	-	0	0		0	0		0	0	
<b>Notio Aigaio (South Aegean)</b>	<b>9</b>	<b>12</b>	<b>33.3</b>	<b>2</b>	<b>0</b>	<b>-100.0</b>	<b>3</b>	<b>4</b>	<b>33.3</b>	<b>8</b>	<b>12</b>	<b>50.0</b>
Dodekanissos	7	3	-57.1	2	0		2	1		5	2	
Kyklades	2	9	350.0	0	0		1	3		3	10	
<b>Kriti (Crete)</b>	<b>9</b>	<b>9</b>	<b>0.0</b>	<b>1</b>	<b>3</b>	<b>200.0</b>	<b>3</b>	<b>0</b>	<b>-100.0</b>	<b>8</b>	<b>14</b>	<b>75.0</b>
Iraklio	7	8	14.3	0	3		2	0		8	13	
Lassithi	1	0	-100.0	0	0		1	0		0	0	
Rethymno	0	0	-	0	0		0	0		0	0	
Chania	1	1	0.0	1	0		0	0		0	1	

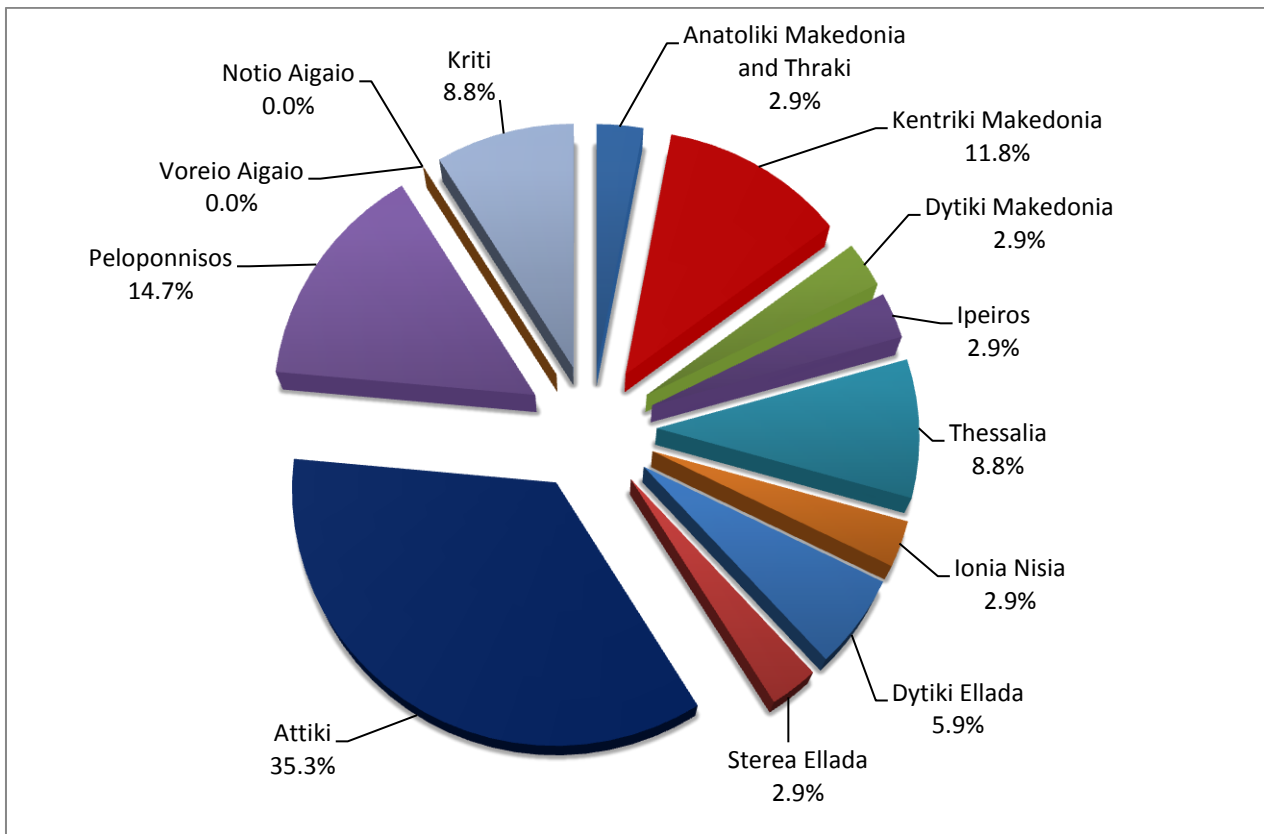
\* Provisional data

**Graph 3: Road traffic accidents by region, January 2021 \***



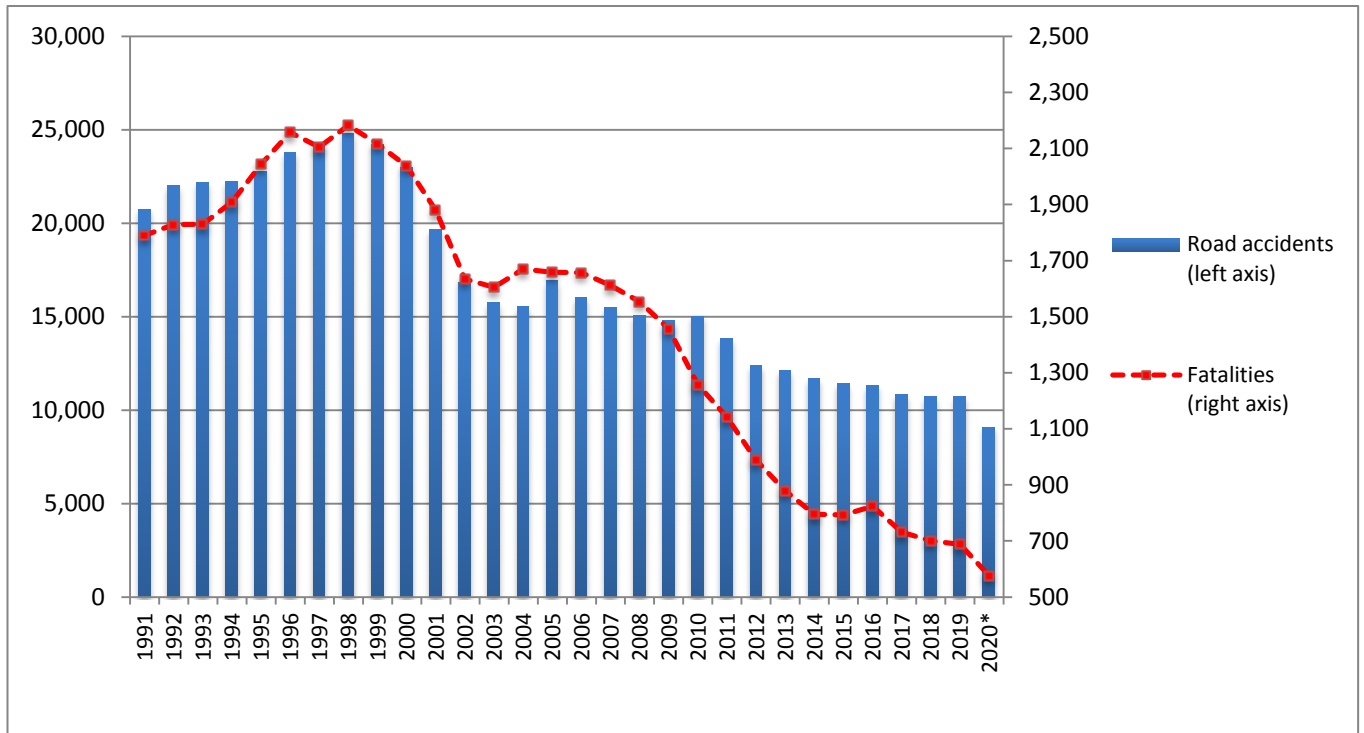
\* Provisional data

**Graph 4: Fatalities by region, January 2021 \***



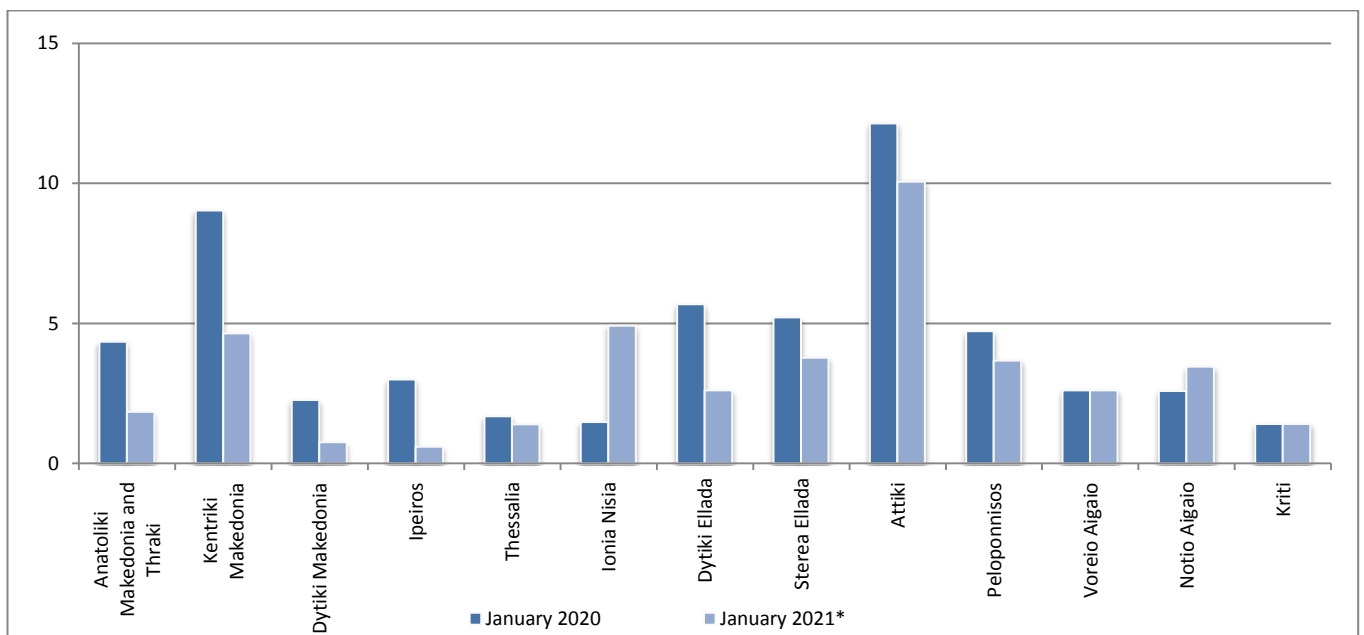
\* Provisional data

**Graph 5: Total road traffic accidents and fatalities, 1991-2020\***



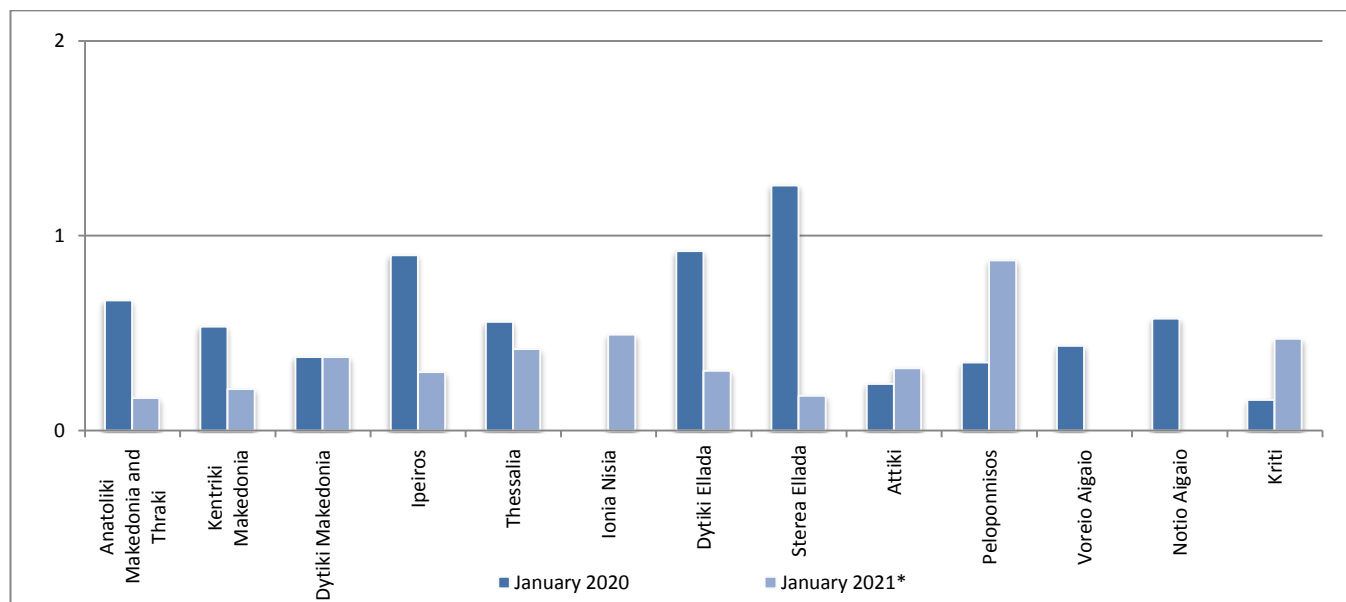
\* Provisional data for the period March 2020 – December 2020

**Graph 6: Road traffic accidents per 100,000 inhabitants**

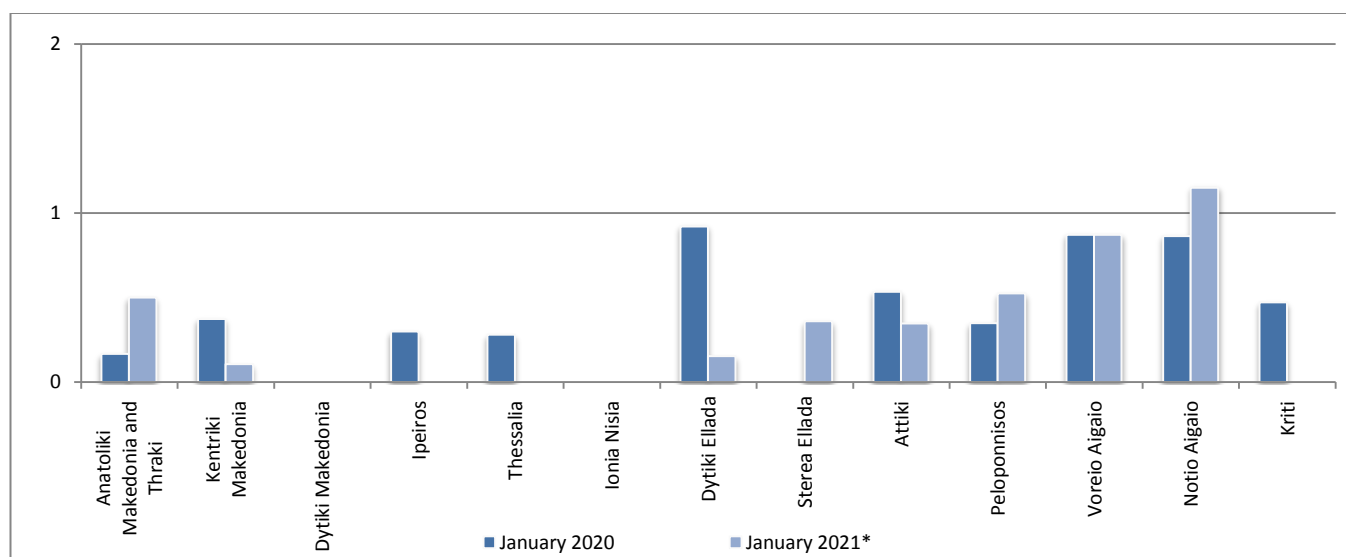


\* Provisional data

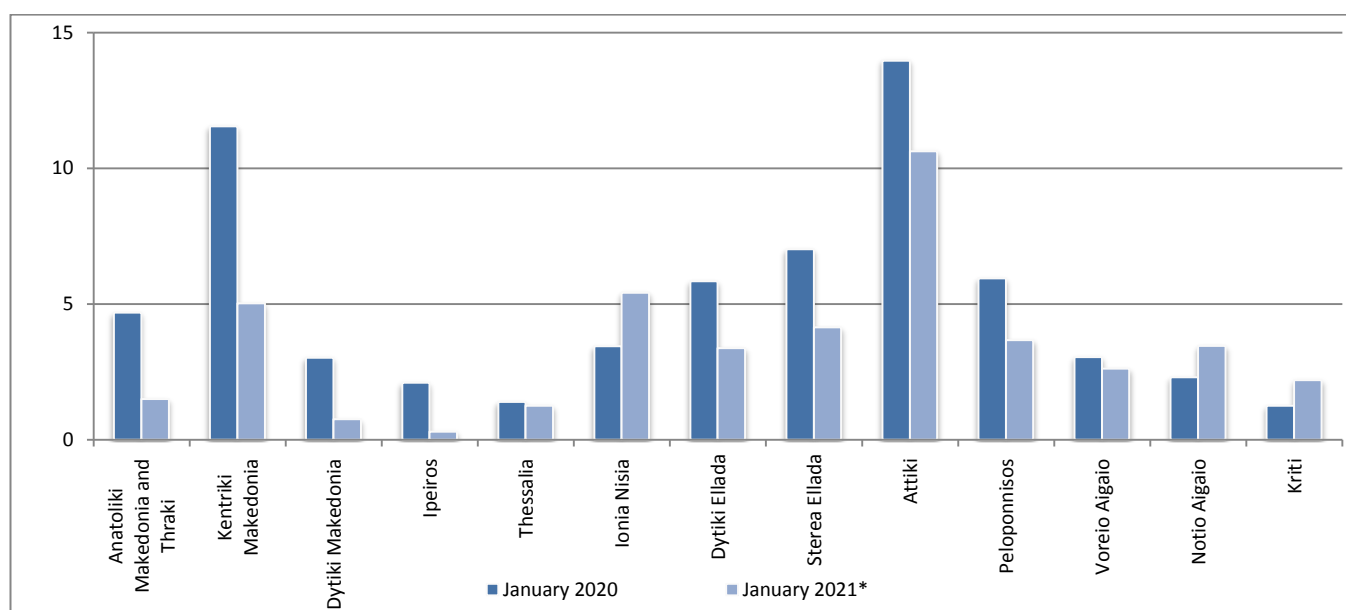
**Graph 7: Fatalities per 100,000 inhabitants**



**Graph 8: Serious injuries per 100,000 inhabitants**



**Graph 9: Slight injuries per 100,000 inhabitants**



\* Provisional data

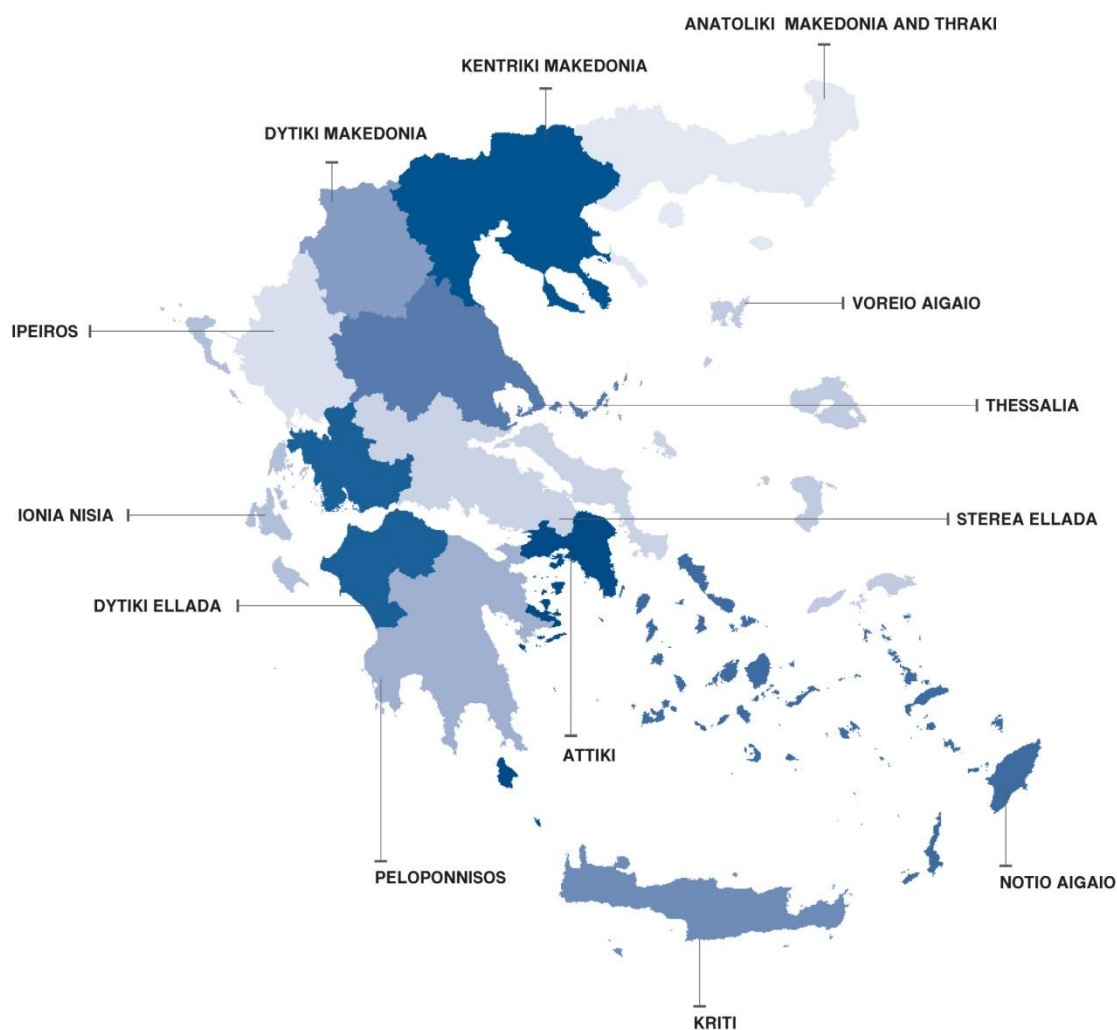
## EXPLANATORY NOTES

### Survey on Road Traffic Accidents

The Survey on Road Traffic Accidents is conducted on a monthly basis and it records, for each region (see map) and department of Greece and for each month separately, the number of accidents resulting in death or injury, as well as the number of persons injured by categories (drivers, passengers, pedestrians).

On a yearly basis, road traffic accidents are further analyzed. The competent agencies for filling in/collecting the forms on road accidents are the local Police Authorities and the local Port Authorities of Greece.

The lower level of analysis for the place where an injury road accident occurred is the settlement. Data are collected on a monthly basis. The main variables are the following: place of accident, kind of road, casualties, conditions of road surface and type of road.



### Legal basis

The Survey on Road Traffic Accidents is governed by Council Decision 93/704 of the European Community.

### Reference period

Monthly.

### Availability of data

Provisional data are available 2 months after the reference month.  
Final data are available 10 months after the reference year.



**Definitions** **Road accident** (injury accident): Any accident involving at least one road motor vehicle in motion on a public road or square to which the public has access (excluding yards, industrial sites or vehicle depot of public transport enterprises), resulting in at least one injured or killed person. Accidents with only material damages are not included.

**Fatality (Death):** Any person killed immediately or dying within 30 days as a result of an injury accident (This national definition applies since 01.01.1996)

**Person injured:** Any person who sustained an injury as result of an injury accident, and who normally needs medical treatment.

**Serious injury:** Any person who sustained an injury as result of an injury accident, such as brain damages, mutilation, multiple injuries, which may result in lack of awareness or which are life-threatening.

**Slight injury:** Any person injured who sustained minor and not life-threatening injuries.

**Vehicle:** Include motor vehicles, trolleybuses, motorcycles, bicycles, motorbikes, agricultural and road making machines, animal and hand-drawn vehicles. Railway vehicles are excluded, unless the road accident involves at least one of the aforementioned types of vehicles and therefore, railway vehicles are considered vehicles.

**Methodology** The forms of the survey are filled in by the local Police Authorities and the local Port Authorities as well.

**References** More information about Road Traffic Accidents is available on ELSTAT's website and more specifically at the link: <https://www.statistics.gr/en/statistics/-/publication/SDT03/->.