

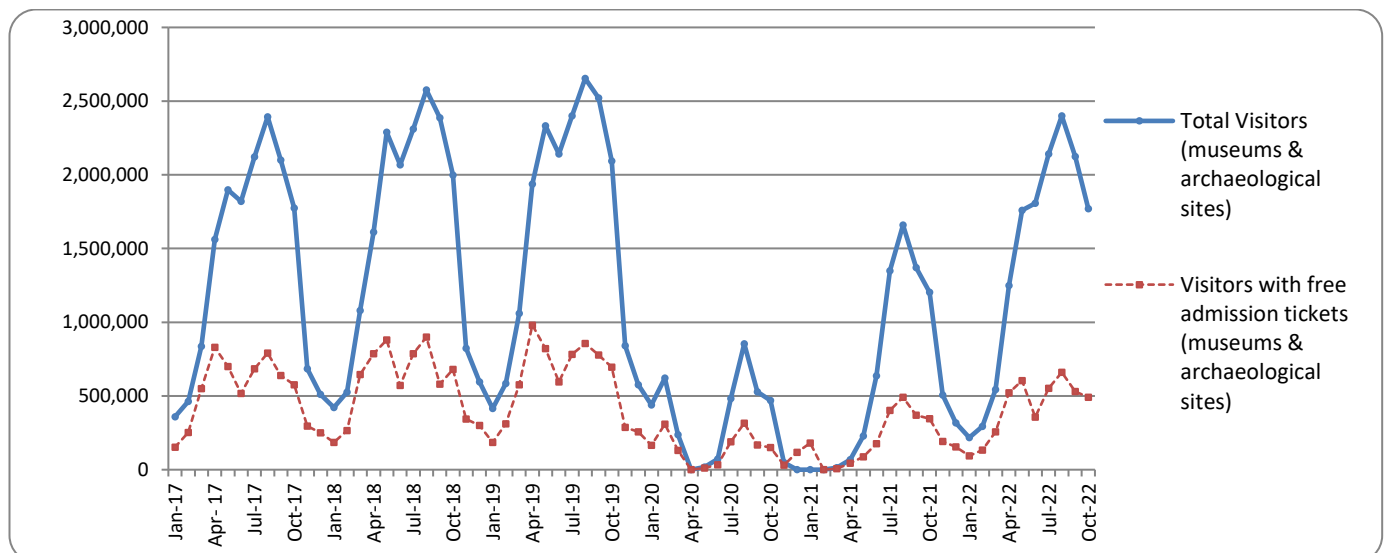


SURVEY ON MUSEUMS AND ARCHAEOLOGICAL SITES ATTENDANCE OCTOBER 2022

The Hellenic Statistical Authority (ELSTAT) announces the results of the *Survey on Museums and Archaeological Sites Attendance* for October 2022. More specifically:

- During October 2022 compared with the corresponding month of 2021, Museums recorded a 38.3% increase in the number of visitors and a 58.6% increase in the number of free admission visitors, as well as a 58.2% increase in their receipts (Table 1).
- As regards Archaeological sites, in October 2022 compared with the corresponding month of 2021, an increase of 50.4% was recorded at the number of visitors, of 34.0% in the number of free admission visitors and of 61.2% in the corresponding receipts (Table 1).
- During the ten month period from January to October 2022, compared to the corresponding period of 2021, an increase of 136.3% was recorded in the number of visitors, of 146.0% in the number of free admission visitors and of 129.8% in the relevant receipts, given the fact that in the framework of the preventative measures against the Covid-19 pandemic, the operation of the museums was gradually suspended from November 1st 2020 until May 13th 2021 (Table 2).
- As regards Archaeological sites, during the ten month period from January to October 2022, compared to the corresponding period of 2021, an increase of 112.7% was recorded in the number of visitors, while an increase of 105.8% was observed in the number of free admission visitors and of 124.8% in the relevant receipts, given the suspension of operation of Archaeological sites from November 7th 2020 until March 21st 2021 (Table 2).

Graph 1: Visitors of Museums and Archaeological sites (January 2017 – October 2022)



Information on methodological issues:

Sectoral Statistics Division
Tourism and Culture Statistics Section
Head of Section: Eleni Papadopoulou
Tel: +30 213 135 2168
e-mail: e.papadopoulou@statistics.gr

Information for data provision:

Tel. +30 213 135 2022, 2308, 2310
e-mail: data.dissem@statistics.gr

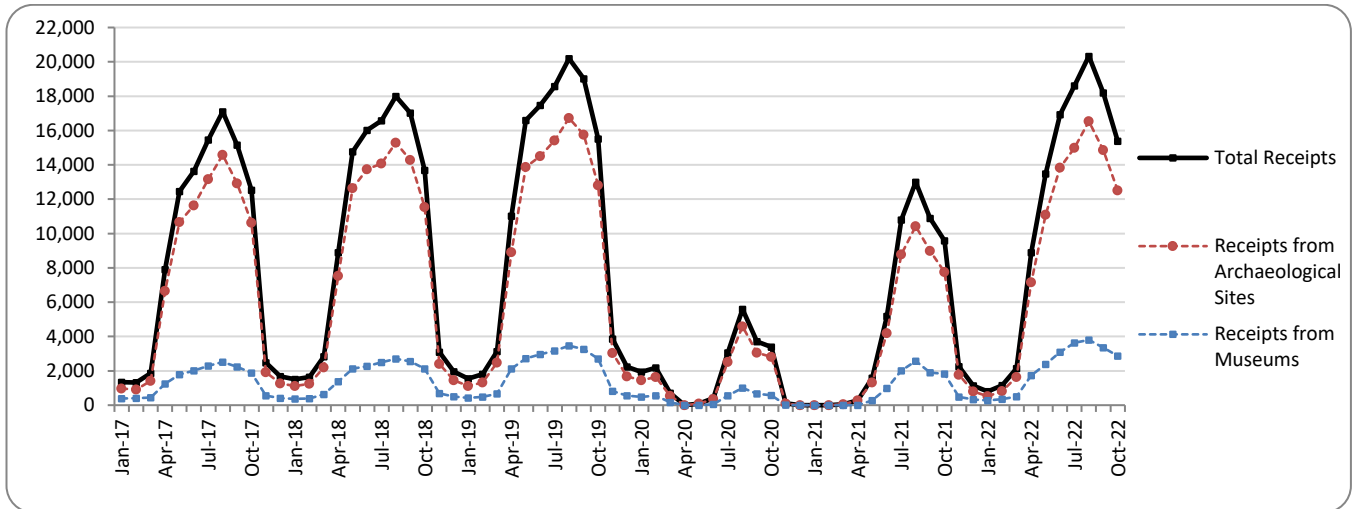
**TABLE 1: VISITORS OF MUSEUMS AND ARCHAEOLOGICAL SITES - TOTAL RECEIPTS
(OCTOBER 2021 & OCTOBER 2022)**

I. NUMBER OF VISITORS			
Museums and Archaeological sites	2021	2022	Change 2022/2021
Total number of visitors (A+B)	1,203,105	1,769,296	47.1%
A. Museums (C+E)	329,255	455,341	38.3%
Acropolis Museum	86,972	112,235	29.0%
National Archaeological	30,488	57,282	87.9%
Ancient Olympia	6,430	9,123	41.9%
Palace of the Grand Master (Rhodes)	25,552	25,518	-0.1%
Herakleion Archaeological (Crete)	22,515	29,255	29.9%
White Tower	11,508	22,680	97.1%
Delphi	9,524	18,563	94.9%
Other museums	136,266	180,685	32.6%
B. Archaeological Sites (D+F)	873,850	1,313,955	50.4%
Epidavros ⁽¹⁾	28,536	48,293	69.2%
The Acropolis of Mycenae & Atreus' Treasure	26,554	49,299	85.7%
The Acropolis of Athens	187,214	333,495	78.1%
Sounio	23,940	37,809	57.9%
The Acropolis of Lindos	65,555	74,033	12.9%
Royal Tombs of Vergina	9,298	17,624	89.5%
Ancient Olympia	25,638	45,171	76.2%
Knossos (Crete)	81,858	103,525	26.5%
Phaistos (Crete)	9,433	11,990	27.1%
Ancient Korinthos ⁽¹⁾	12,000	24,569	104.7%
Mystras ⁽¹⁾	13,259	15,885	19.8%
Delphi	24,904	41,904	68.3%
Other archaeological sites	365,661	510,358	39.6%
II. VISITORS WHO PAID TICKET			
	2021	2022	Change 2022/2021
Total number of visitors who paid ticket (C+D)	858,299	1,278,975	49.0%
C. Museums	214,910	273,950	27.5%
D. Archaeological sites	643,389	1,005,025	56.2%
III. VISITORS WITH FREE ADMISSION TICKETS			
	2021	2022	Change 2022/2021
Total number of visitors with free admission ticket (E+F)	344,806	490,321	42.2%
E. Museums	114,345	181,391	58.6%
F. Archaeological sites	230,461	308,930	34.0%
IV. RECEIPTS (euros)			
	2021	2022	Change 2022/2021
Total Receipts (G+H)	9,572,952	15,374,118	60.6%
G. Museums	1,816,584	2,873,274	58.2%
H. Archaeological sites	7,756,368	12,500,844	61.2%

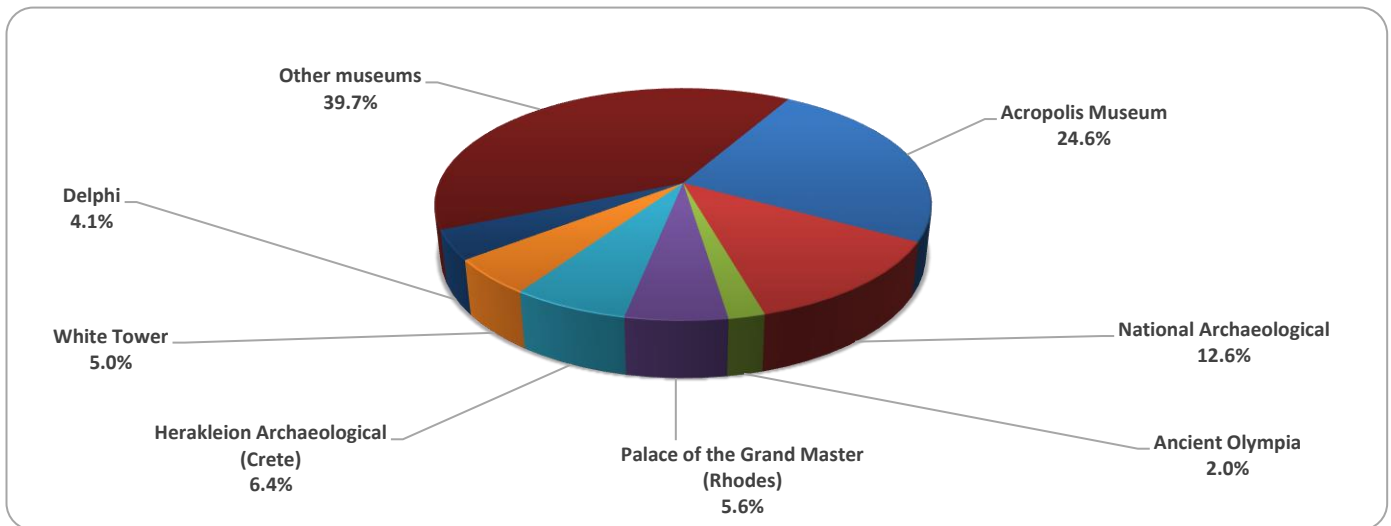
⁽¹⁾ Flat rate ticket, valid both for the museum and the archaeological site.

The following graphs depict the evolution of the receipts of Museums and Archaeological Sites (Graph 2), as well as the number of visitors by Museum (Graph 3) and by Archaeological Site (Graph 4).

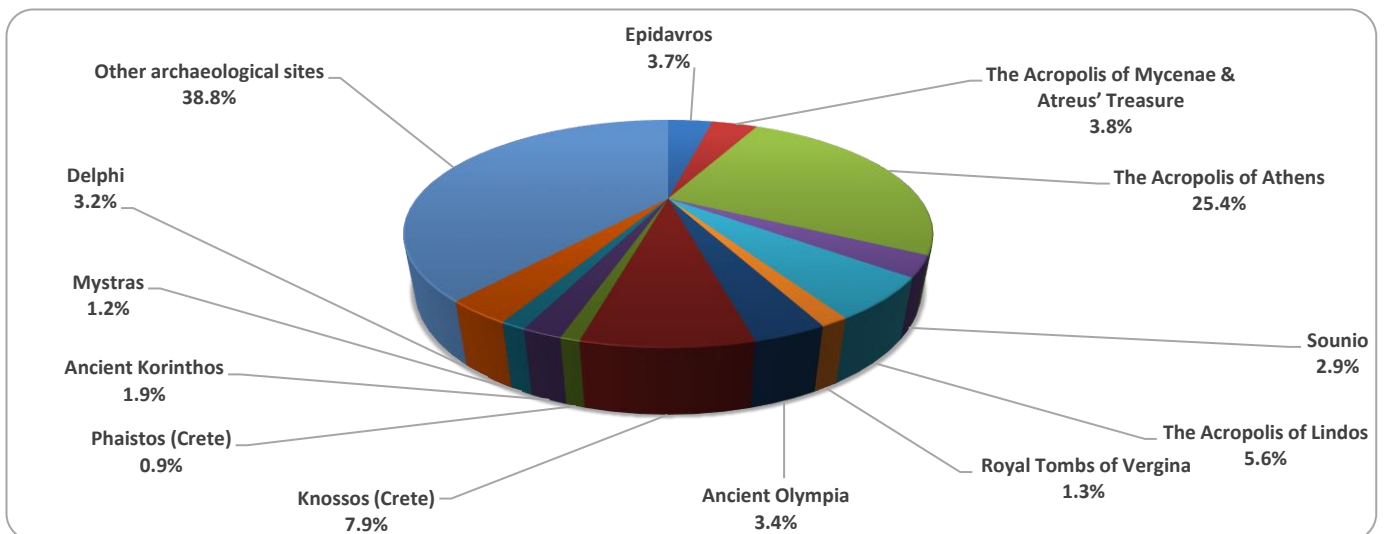
Graph 2: Receipts from Museums and Archaeological Sites (January 2017 – October 2022)
(in thousand euro)



Graph 3: Percentage distribution of visitors by Museum, October 2022



Graph 4: Percentage distribution of visitors by Archaeological site, October 2022



**TABLE 2: VISITORS OF MUSEUMS AND ARCHAEOLOGICAL SITES - TOTAL RECEIPTS
(2020, 2021, JANUARY- OCTOBER 2021, 2022)**

I. VISITORS					
Museums and Archaeological sites	2020 ⁽²⁾	2021 ⁽²⁾	JANUARY -OCTOBER		change 2022/2021
			2021 ⁽²⁾	2022	
Total number of visitors (A+B)	3,772,828	7,357,026	6,531,628	14,306,467	119.0%
A. Museums (C+E)	1,100,904	2,047,481	1,739,815	4,111,971	136.3%
Acropolis Museum	325,969	547,908	456,491	1,234,831	170.5%
National Archaeological	98,175	189,208	154,551	413,380	167.5%
Ancient Olympia	21,956	34,367	30,057	79,718	165.2%
Palace of the Grand Master (Rhodes)	54,572	142,530	134,642	247,792	84.0%
Herakleion Archaeological (Crete)	63,027	127,574	118,578	231,047	94.8%
White Tower	62,007	77,983	63,159	165,027	161.3%
Delphi	41,984	58,102	47,342	133,310	181.6%
Other museums	433,214	869,809	734,995	1,606,866	118.6%
B. Archaeological Sites (D+F)	2,671,924	5,309,545	4,791,813	10,194,496	112.7%
Epidavros ⁽¹⁾	103,532	182,118	164,617	365,147	121.8%
The Acropolis of Mycenae & Atreus' Treasure	78,839	156,227	137,506	344,143	150.3%
The Acropolis of Athens	620,132	1,219,717	1,027,798	2,711,800	163.8%
Sounio	100,319	171,348	146,954	285,822	94.5%
The Acropolis of Lindos	156,462	349,418	342,032	587,786	71.9%
Royal Tombs of Vergina	37,586	56,790	48,484	140,404	189.6%
Ancient Olympia	64,759	143,549	132,013	316,265	139.6%
Knossos (Crete)	175,927	445,160	425,265	802,664	88.7%
Phaistos (Crete)	31,885	48,599	46,400	72,900	57.1%
Ancient Korinthos ⁽¹⁾	31,981	59,271	51,313	140,552	173.9%
Mystras ⁽¹⁾	36,352	78,762	72,498	131,634	81.6%
Delphi	75,983	146,061	125,129	302,079	141.4%
Other archaeological sites	1,158,167	2,252,525	2,071,804	3,993,300	92.7%
II. VISITORS WHO PAID TICKET					
	2020 ⁽²⁾	2021 ⁽²⁾	JANUARY -OCTOBER		change 2022/2021
			2021 ⁽²⁾	2022	
Total number of visitors who paid ticket (C+D)	2,268,397	5,090,418	4,610,130	10,105,872	119.2%
C. Museums	605,426	1,289,896	1,128,395	2,607,981	131.1%
D. Archaeological sites	1,662,971	3,800,522	3,481,735	7,497,891	115.3%
III. VISITORS WITH FREE ADMISSION TICKETS					
	2020 ⁽²⁾	2021 ⁽²⁾	JANUARY -OCTOBER		change 2022/2021
			2021 ⁽²⁾	2022	
Total number of visitors with free admission ticket (E+F)	1,504,431	2,266,608	1,921,498	4,200,595	118.6%
E. Museums	495,478	757,585	611,420	1,503,990	146.0%
F. Archaeological sites	1,008,953	1,509,023	1,310,078	2,696,605	105.8%
IV. RECEIPTS (euros)					
	2020 ⁽²⁾	2021 ⁽²⁾	JANUARY -OCTOBER		change 2022/2021
			2021 ⁽²⁾	2022	
Total Receipts (G+H)	21,176,036	54,735,194	51,345,131	115,910,094	125.7%
G. Museums	4,047,401	10,385,644	9,560,019	21,965,791	129.8%
H. Archaeological sites	17,128,635	44,349,550	41,785,112	93,944,303	124.8%

⁽¹⁾ Flat rate ticket, valid both for the museum and the archaeological site.

⁽²⁾ The operation of Museums was suspended from March 14th until June 16th 2020 and again gradually from November 1st 2020 until May 13th 2021. The operation of Archaeological Sites was suspended from March 14th until May 17th 2020 and from November 7th 2020 until March 21st 2021, in the framework of the preventative measures against the Covid-19 pandemic.

EXPLANATORY NOTES

Survey on Museums and Archaeological Sites Attendance	The Survey on Museums and Archaeological Sites Attendance has been producing results since 1970. The survey collects data from the Hellenic Organization of Cultural Resources Development (HOCRED), supervised by the Ministry of Culture and Sports, on the number of visitors and the receipts from the tickets sold in the Museums and Archaeological sites of the country. The corresponding data for the Acropolis Museum is available from December 2009 onwards.
Legal Framework	The survey is conducted since 1970 on a regular basis and it produces results on a monthly and yearly basis, in compliance with the Joint Ministerial Decision 15189/B379/73.
Reference Period	1/10/2022 - 31/10/2022
Methodology and Definitions	The survey is conducted on a monthly basis from data mainly collected from the Hellenic Organization of Cultural Resources Development (HOCRED), supervised by the Ministry of Culture and Sports, on the number of visitors and the receipts from the tickets sold in the Museums and Archaeological sites of the Country. ELSTAT tabulates and presents the data for the whole of the Country, by month and by year.
	Number of flat rate tickets: From April 1999 onwards, in some museums and the nearby archaeological sites, in addition to the ordinary ticket, a new “flat rate ticket” was established, which is valid for both the museum and the nearby archaeological site. The total number of these flat rate tickets for October 2022 was 99,435
References	More information on the Survey on Museums and Archaeological Sites Attendance and detailed time series are available on: http://www.statistics.gr/en/statistics/-/publication/SCI21/