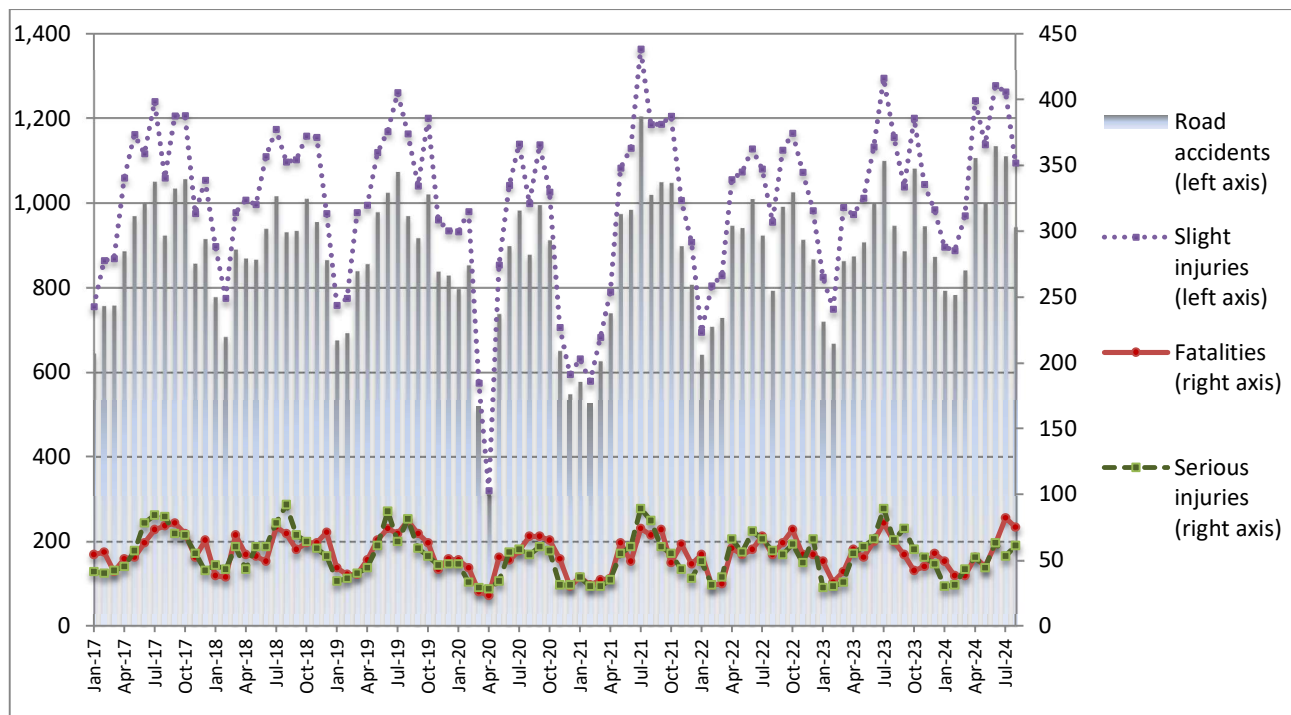


## ROAD TRAFFIC ACCIDENTS: August 2024

The Hellenic Statistical Authority (ELSTAT) announces provisional<sup>1</sup> data from the survey on “Road Traffic Accidents” for August 2024. In particular, the road traffic accidents which occurred in Greece, resulting in death or injury, decreased by 0.3% in comparison with the corresponding month of 2023 (943 road accidents in August 2024, against 946 road accidents in August 2023).

The casualties of the injury-causing accidents that occurred in August 2024 were as follows: 75 deaths, 61 serious injuries and 1,094 slight injuries. In contrast, in August 2023 the corresponding figures were: 64 deaths, 65 serious injuries and 1,155 slight injuries. Therefore, road traffic accident casualties in August 2024 increased by 17.2% for deaths and decreased by 6.2% for serious injuries and by 5.3% for slight injuries.

**Graph 1: Road traffic accidents and casualties,  
January 2017 - August 2024**



Provisional data for the period September 2023 – August 2024

**Information on methodological issues:**

Sectoral Statistics Division  
Transport Statistics Section  
L. Miliara  
Tel: +30 213 135 3095  
e-mail: [l.miliara@statistics.gr](mailto:l.miliara@statistics.gr)

**Information for data provision:**

Tel: +30 213 135 2022, 2308, 2310  
e-mail: [data.dissem@statistics.gr](mailto:data.dissem@statistics.gr)

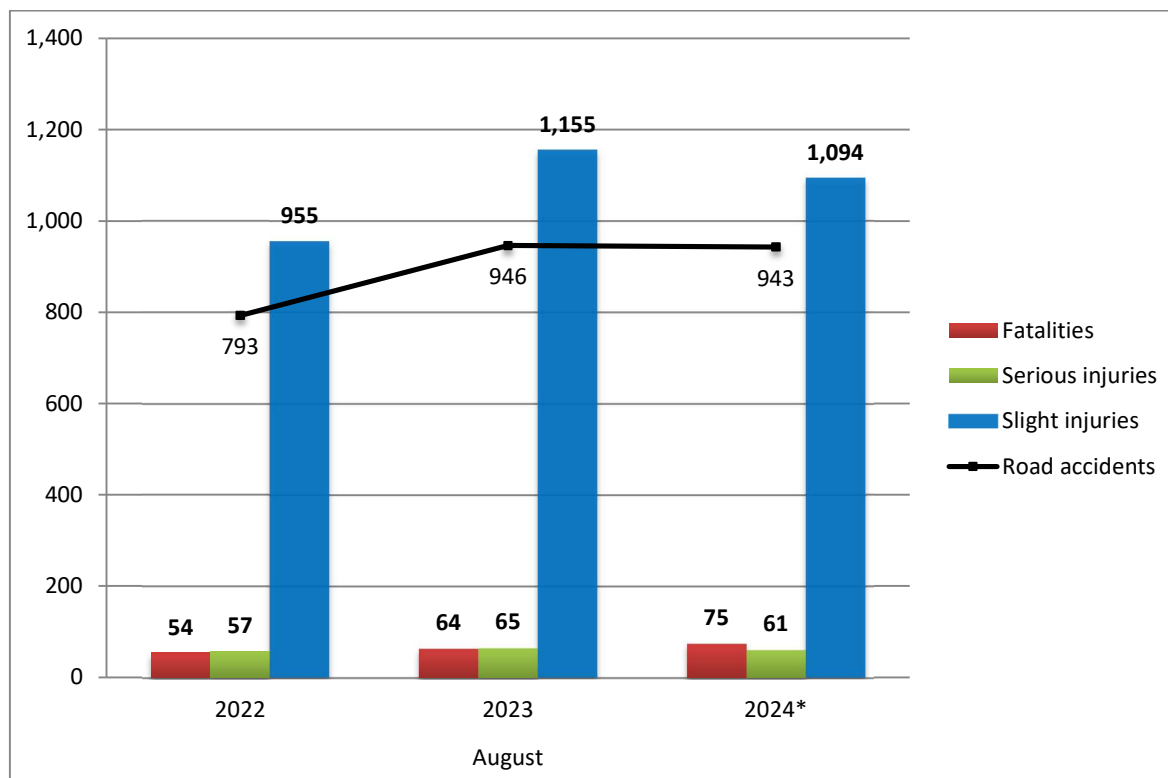
<sup>[1]</sup> Data for the reference year is provisional until the finalization of the annual data, which takes place 12 months after the end of the reference year and is published in the corresponding announcement of the following year. During these 12 months the provisional data is updated on the basis of the data of the Road Accident Forms of that year which is transmitted to ELSTAT by Police Authorities (see explanatory notes).

**Table 1: Road traffic accidents and casualties, August 2022 - 2024\***

	August				
	2022	2023	2023/2022 (%)	2024*	2024*/2023 (%)
<b>Road accidents</b>	<b>793</b>	<b>946</b>	<b>19.3</b>	<b>943</b>	<b>-0.3</b>
<b>Fatalities</b>	<b>54</b>	<b>64</b>	<b>18.5</b>	<b>75</b>	<b>17.2</b>
<b>Total injuries</b>	<b>1,012</b>	<b>1,220</b>	<b>20.6</b>	<b>1,155</b>	<b>-5.3</b>
Serious injuries	57	65	14.0	61	-6.2
Slight injuries	955	1,155	20.9	1,094	-5.3

\* Provisional data

**Graph 2: Road traffic accidents and casualties, August 2022 - 2024\***



\* Provisional data

**Table 2: Road traffic accidents and casualties, by region and department, August 2023 and 2024\***

Region and department	Road accidents			Fatalities			Serious injuries			Slight injuries		
	2023	2024*	%	2023	2024*	%	2023	2024*	%	2023	2024*	%
<b>Greece Total</b>	<b>946</b>	<b>943</b>	<b>-0.3</b>	<b>64</b>	<b>75</b>	<b>17.2</b>	<b>65</b>	<b>61</b>	<b>-6.2</b>	<b>1,155</b>	<b>1,094</b>	<b>-5.3</b>
<b>Anatoliki Makedonia and Thraki (East Macedonia and Thrace)</b>	<b>43</b>	<b>29</b>	<b>-32.6</b>	<b>3</b>	<b>4</b>	<b>33.3</b>	<b>7</b>	<b>2</b>	<b>-71.4</b>	<b>45</b>	<b>35</b>	<b>-22.2</b>
Drama	7	3	-57.1	0	0		0	0		8	3	
Evros	11	7	-36.4	0	3		0	0		12	5	
Kavala	9	10	11.1	1	1		1	1		10	18	
Xanthi	5	4	-20.0	0	0		2	1		7	4	
Rodopi	11	5	-54.5	2	0		4	0		8	5	
<b>Kentriki Makedonia (Central Macedonia)</b>	<b>182</b>	<b>184</b>	<b>1.1</b>	<b>8</b>	<b>9</b>	<b>12.5</b>	<b>10</b>	<b>7</b>	<b>-30.0</b>	<b>225</b>	<b>237</b>	<b>5.3</b>
Imathia	3	3	0.0	0	0		1	1		2	3	
Thessaloniki	139	148	6.5	4	7		5	3		178	188	
Kilkis	8	5	-37.5	0	1		0	2		11	10	
Pella	5	1	-80.0	1	0		3	0		1	1	
Pieria	2	1	-50.0	1	0		0	0		3	1	
Serres	4	7	75.0	1	1		0	1		3	10	
Chalkidiki	21	19	-9.5	1	0		1	0		27	24	
<b>Dytiki Makedonia (West Macedonia)</b>	<b>1</b>	<b>2</b>	<b>100.0</b>	<b>0</b>	<b>0</b>	<b>-</b>	<b>2</b>	<b>0</b>	<b>-100.0</b>	<b>0</b>	<b>5</b>	<b>-</b>
Grevena	1	1	0.0	0	0		2	0		0	1	
Kastoria	0	1	-	0	0		0	0		0	4	
Kozani	0	0	-	0	0		0	0		0	0	
Florina	0	0	-	0	0		0	0		0	0	
<b>Ipeiros (Epirus)</b>	<b>19</b>	<b>9</b>	<b>-52.6</b>	<b>4</b>	<b>1</b>	<b>-75.0</b>	<b>1</b>	<b>0</b>	<b>-100.0</b>	<b>29</b>	<b>14</b>	<b>-51.7</b>
Arta	1	2	100.0	0	0		0	0		1	3	
Thesprotia	7	1	-85.7	0	0		1	0		8	1	
Ioannina	6	5	-16.7	1	0		0	0		13	9	
Preveza	5	1	-80.0	3	1		0	0		7	1	
<b>Thessalia (Thessaly)</b>	<b>20</b>	<b>22</b>	<b>10.0</b>	<b>5</b>	<b>4</b>	<b>-20.0</b>	<b>5</b>	<b>7</b>	<b>40.0</b>	<b>16</b>	<b>18</b>	<b>12.5</b>
Karditsa	4	4	0.0	2	1		1	1		2	3	
Larissa	6	9	50.0	1	3		1	3		7	5	
Magnissia	9	6	-33.3	2	0		2	1		7	5	
Trikala	1	3	200.0	0	0		1	2		0	5	
<b>Ionian Nisia (Ionian Islands)</b>	<b>25</b>	<b>19</b>	<b>-24.0</b>	<b>6</b>	<b>2</b>	<b>-66.7</b>	<b>0</b>	<b>1</b>	<b>-</b>	<b>28</b>	<b>20</b>	<b>-28.6</b>
Zakynthos	8	5	-37.5	3	0		0	1		9	4	
Kerkyra	4	5	25.0	3	1		0	0		2	5	
Kefallinia	4	4	0.0	0	0		0	0		8	6	
Lefkada	9	5	-44.4	0	1		0	0		9	5	

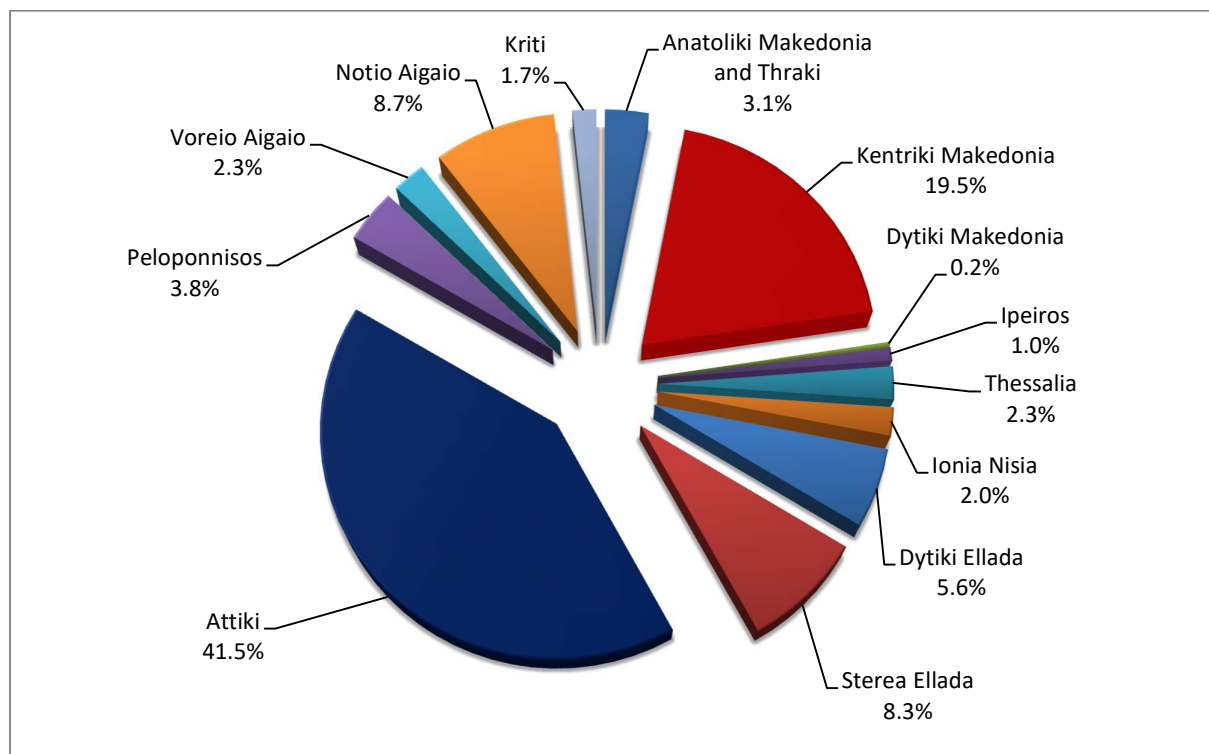
\* Provisional data

**Table 2: Road traffic accidents and casualties, by region and department, August 2023 and 2024\* (Continued)**

Region and department	Road accidents			Fatalities			Serious injuries			Slight injuries		
	2023	2024*	%	2023	2024*	%	2023	2024*	%	2023	2024*	%
<b>Dytiki Ellada (West Greece)</b>	<b>52</b>	<b>53</b>	<b>1.9</b>	<b>4</b>	<b>7</b>	<b>75.0</b>	<b>1</b>	<b>8</b>	<b>700.0</b>	<b>70</b>	<b>67</b>	<b>-4.3</b>
Etolia & Akarnania	31	19	-38.7	2	2		0	3		41	33	
Achaia	13	25	92.3	1	2		0	4		14	27	
Ilia	8	9	12.5	1	3		1	1		15	7	
<b>Sterea Ellada</b>	<b>62</b>	<b>78</b>	<b>25.8</b>	<b>4</b>	<b>9</b>	<b>125.0</b>	<b>2</b>	<b>10</b>	<b>400.0</b>	<b>91</b>	<b>89</b>	<b>-2.2</b>
Viotia	2	13	550.0	0	2		0	2		4	12	
Evia	37	39	5.4	1	4		2	5		57	46	
Evrytania	3	2	-33.3	0	0		0	0		3	2	
Fthiotida	13	15	15.4	2	3		0	2		16	16	
Fokida	7	9	28.6	1	0		0	1		11	13	
<b>Attiki (Attica)</b>	<b>412</b>	<b>391</b>	<b>-5.1</b>	<b>16</b>	<b>15</b>	<b>-6.3</b>	<b>17</b>	<b>16</b>	<b>-5.9</b>	<b>506</b>	<b>428</b>	<b>-15.4</b>
<b>Peloponnisos (Peloponnese)</b>	<b>28</b>	<b>36</b>	<b>28.6</b>	<b>4</b>	<b>5</b>	<b>25.0</b>	<b>4</b>	<b>0</b>	<b>-100.0</b>	<b>35</b>	<b>51</b>	<b>45.7</b>
Argolida	3	2	-33.3	1	0		1	0		3	2	
Arkadia	4	11	175.0	1	2		1	0		7	17	
Korinthia	11	14	27.3	0	2		2	0		12	22	
Lakonia	3	2	-33.3	1	0		0	0		2	4	
Messinia	7	7	0.0	1	1		0	0		11	6	
<b>Voreio Aigaio (North Aegean)</b>	<b>28</b>	<b>22</b>	<b>-21.4</b>	<b>2</b>	<b>2</b>	<b>0.0</b>	<b>2</b>	<b>2</b>	<b>0.0</b>	<b>31</b>	<b>26</b>	<b>-16.1</b>
Lesvos	18	15	-16.7	1	2		2	1		20	17	
Samos	9	5	-44.4	1	0		0	1		9	7	
Chios	1	2	100.0	0	0		0	0		2	2	
<b>Notio Aigaio (South Aegean)</b>	<b>55</b>	<b>82</b>	<b>49.1</b>	<b>5</b>	<b>9</b>	<b>80.0</b>	<b>8</b>	<b>5</b>	<b>-37.5</b>	<b>63</b>	<b>90</b>	<b>42.9</b>
Dodekanissos	21	30	42.9	3	5		2	1		24	33	
Kyklades	34	52	52.9	2	4		6	4		39	57	
<b>Kriti (Crete)</b>	<b>19</b>	<b>16</b>	<b>-15.8</b>	<b>3</b>	<b>8</b>	<b>166.7</b>	<b>6</b>	<b>3</b>	<b>-50.0</b>	<b>16</b>	<b>14</b>	<b>-12.5</b>
Iraklio	8	7	-12.5	1	1		3	2		5	7	
Lassithi	3	0	-100.0	1	0		1	0		3	0	
Rethymno	3	3	0.0	1	2		1	0		2	3	
Chania	5	6	20.0	0	5		1	1		6	4	

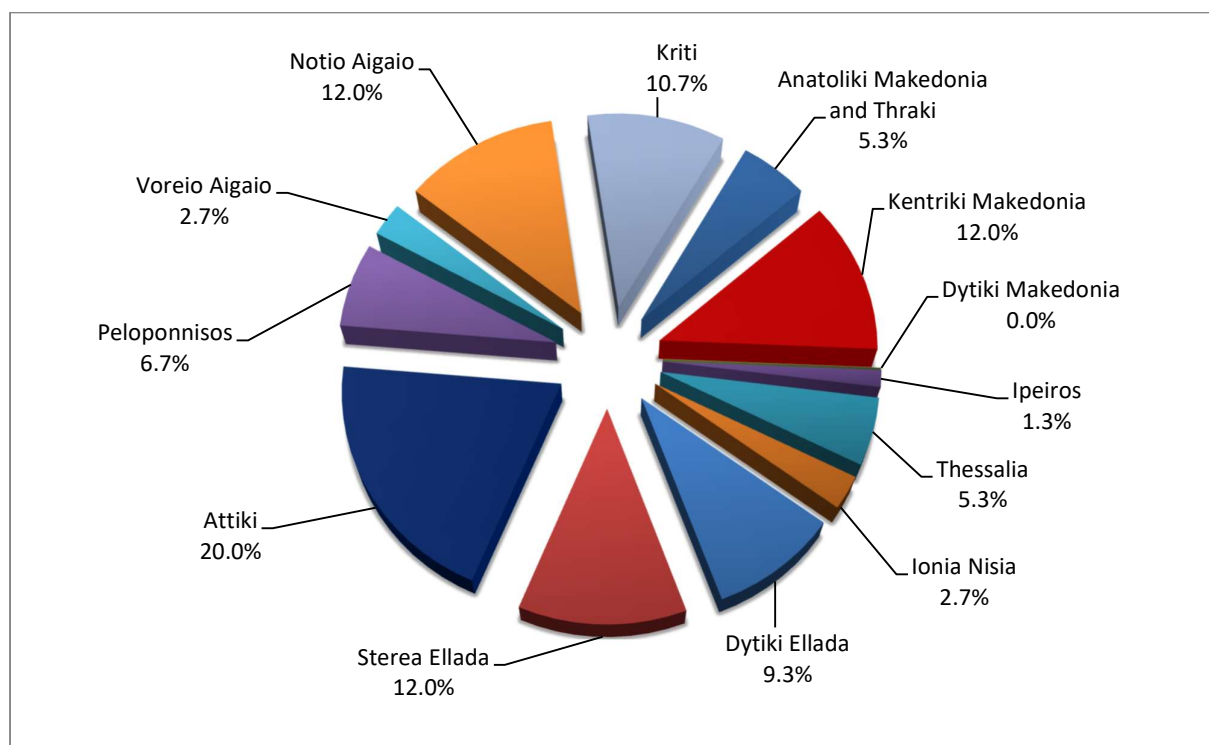
\* Provisional data

**Graph 3: Road traffic accidents by region, August 2024 \***



\* Provisional data

**Graph 4: Fatalities by region, August 2024 \***



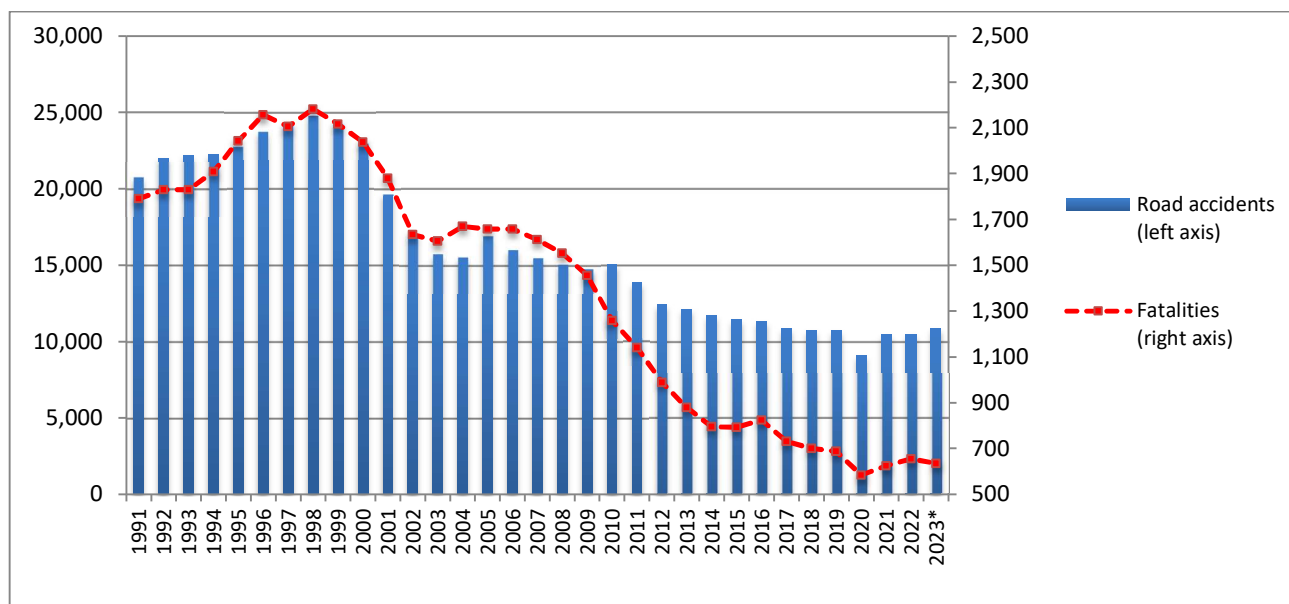
\* Provisional data

**Table 3: Road traffic accidents and casualties for the period January - August 2022, 2023 and 2024\***

	2022		2023		2024 *
	January - August	Total year	January - August	Total year*	January - August
<b>Road Accidents</b>	6,691	<b>10,487</b>	7,076	<b>10,861</b>	7,710
<i>Annual Change (%)</i>			5.8	3.6	9.0
<b>Fatalities</b>	410	<b>654</b>	439	<b>635</b>	441
<i>Annual Change (%)</i>			7.1	-2.9	0.5
<b>Serious injuries</b>	434	<b>664</b>	427	<b>658</b>	377
<i>Annual Change (%)</i>			-1.6	-0.9	-11.7
<b>Slight injuries</b>	7,617	<b>11,961</b>	8,130	<b>12,396</b>	8,768
<i>Annual Change (%)</i>			6.7	3.6	7.8

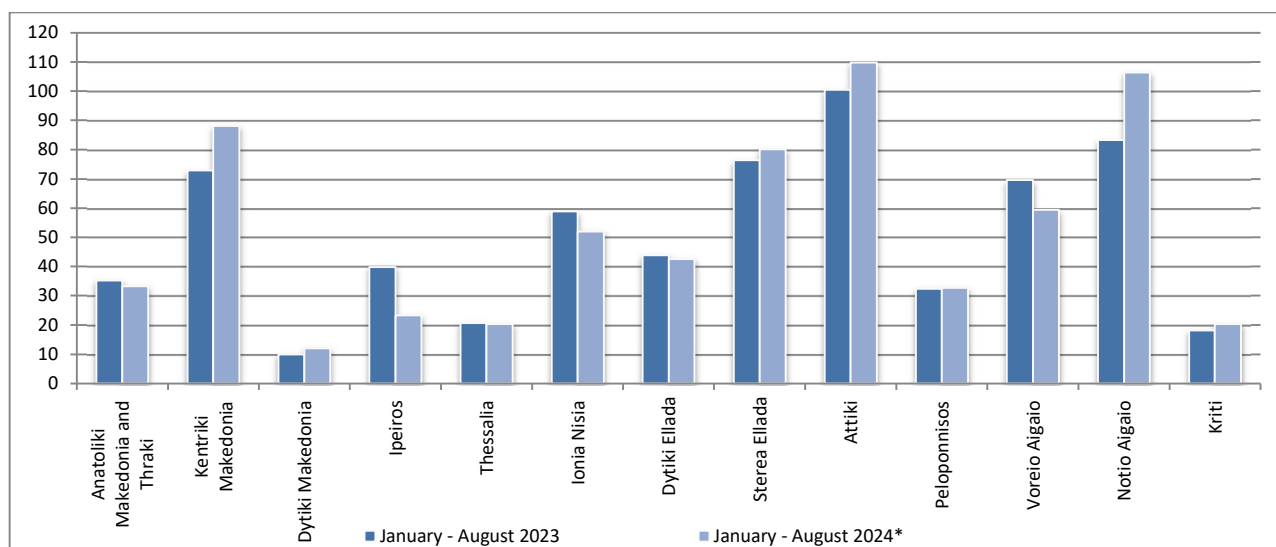
\* Provisional data

**Graph 5: Total road traffic accidents and fatalities, 1991-2023\***



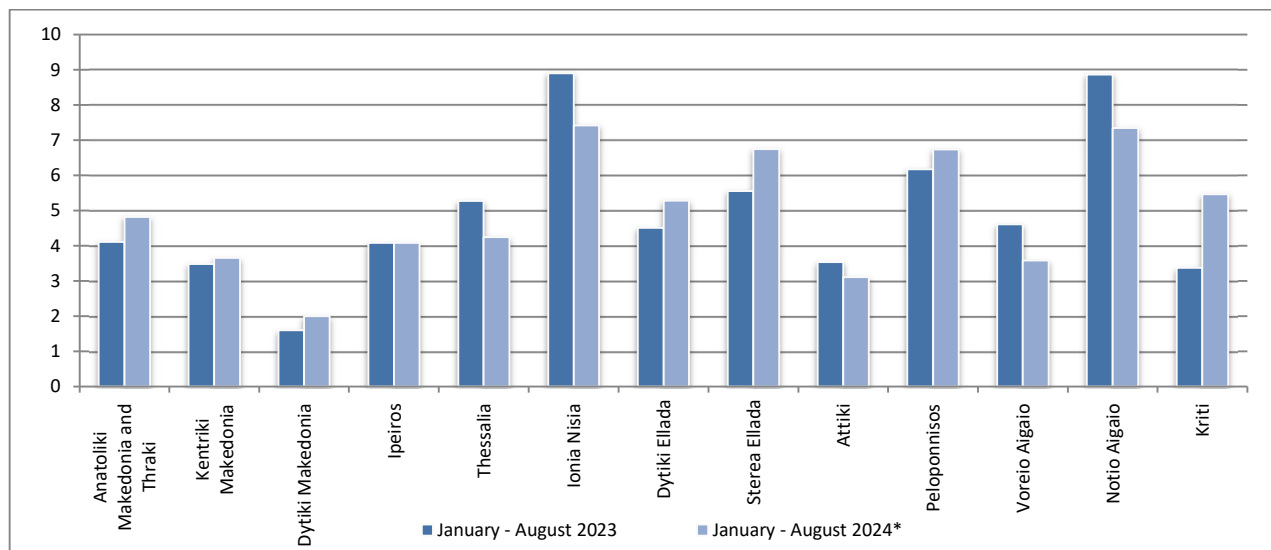
\* Provisional data for the period September 2023 – December 2023

**Graph 6: Road traffic accidents per 100,000 inhabitants, for the period January - August 2023 and 2024\***

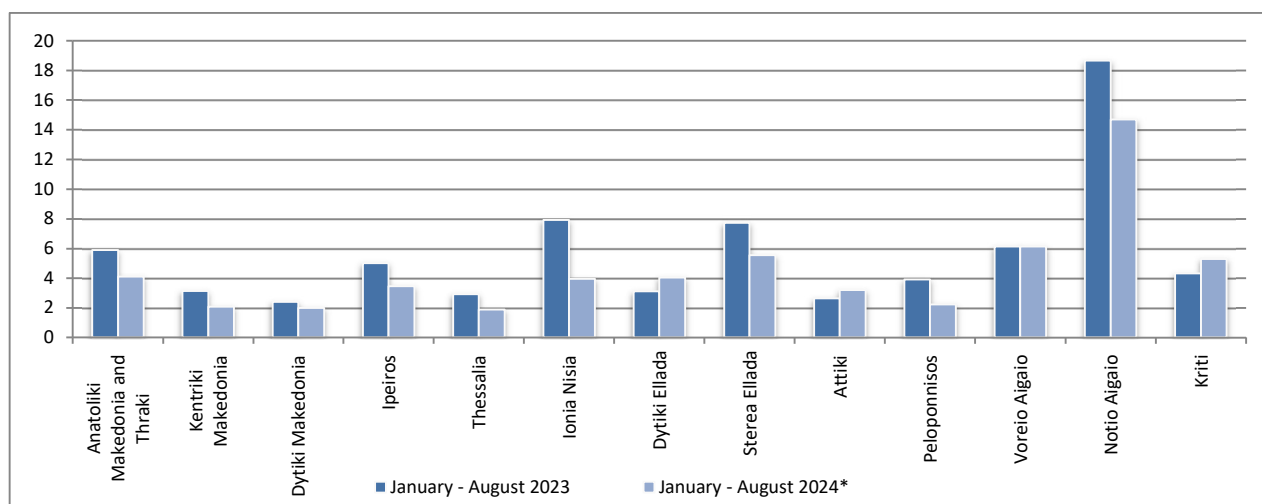


\* Provisional data

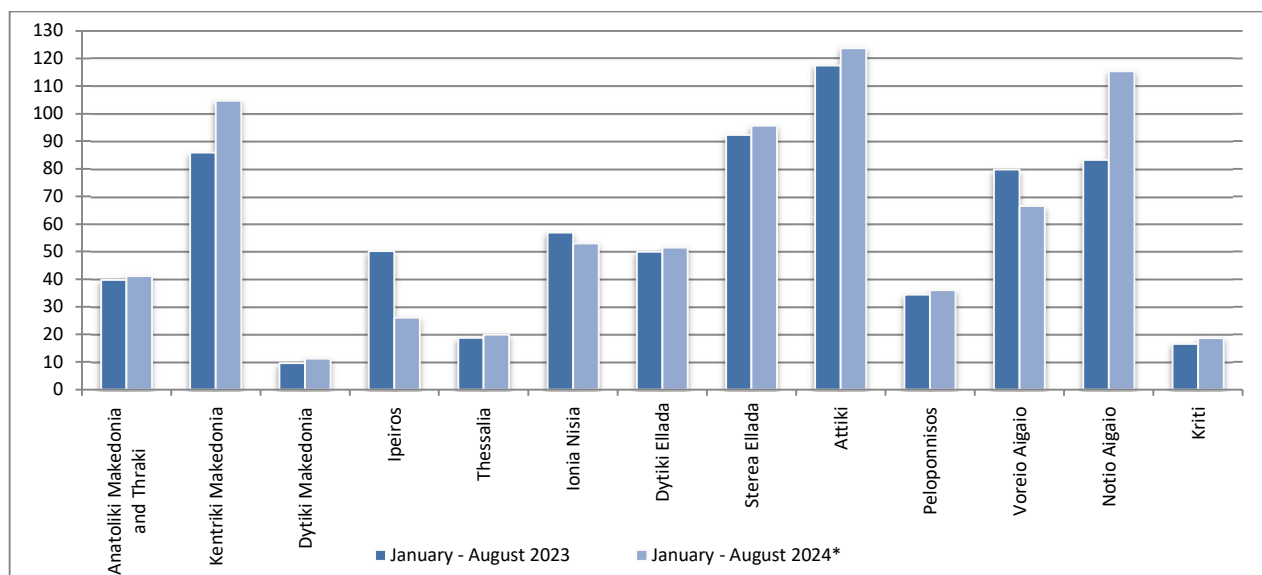
**Graph 7: Fatalities per 100,000 inhabitants, for the period January - August 2023 and 2024\***



**Graph 8: Serious injuries per 100,000 inhabitants, for the period January - August 2023 and 2024\***



**Graph 9: Slight injuries per 100,000 inhabitants, for the period January - August 2023 and 2024\***



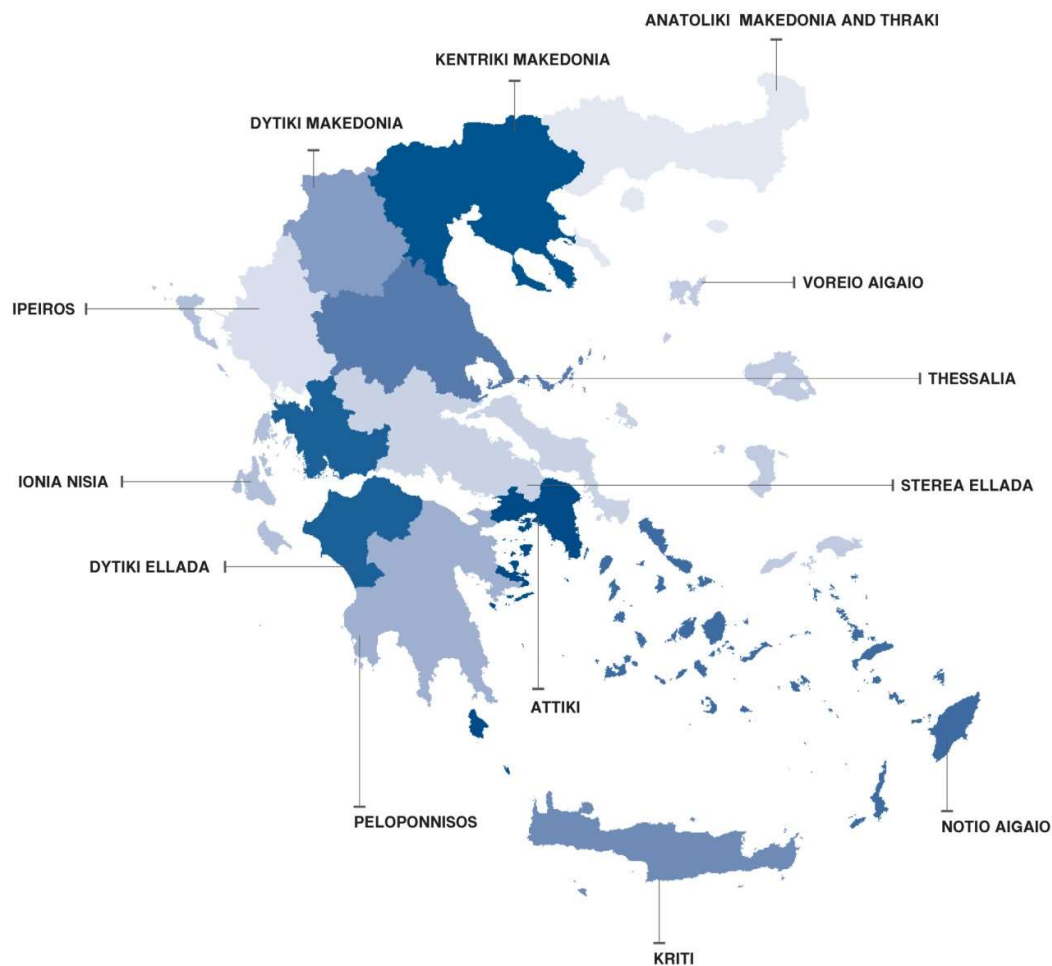
\* Provisional data

## EXPLANATORY NOTES

**Survey on Road Traffic Accidents** The Survey on Road Traffic Accidents is conducted on a monthly basis and it records, for each region (see map) and department of Greece and for each month separately, the number of accidents resulting in death or injury, as well as the number of persons injured by categories (drivers, passengers, pedestrians).

On a yearly basis, road traffic accidents are further analyzed. The competent agencies for filling in/collecting the forms on road accidents are the local Police Authorities and the local Port Authorities of Greece.

The lower level of analysis for the place where an injury road accident occurred is the settlement. Data are collected on a monthly basis. The main variables are the following: place of accident, kind of road, casualties, conditions of road surface and type of road.



**Legal basis** The Survey on Road Traffic Accidents is governed by Council Decision 93/704 of the European Community.

**Reference period** Monthly.

**Availability of data** Provisional data are available 2 months after the reference month.  
Final data are available 12 months after the reference year.



**Definitions** **Road accident** (injury accident): Any accident involving at least one road motor vehicle in motion on a public road or square to which the public has access (excluding yards, industrial sites or vehicle depot of public transport enterprises), resulting in at least one injured or killed person. Accidents with only material damages are not included.

**Fatality (Death):** Any person killed immediately or dying within 30 days as a result of an injury accident (This national definition applies since 01.01.1996)

**Person injured:** Any person who sustained an injury as result of an injury accident, and who normally needs medical treatment.

**Serious injury:** Any person who sustained an injury as result of an injury accident, such as brain damages, mutilation, multiple injuries, which may result in lack of awareness or which are life-threatening.

**Slight injury:** Any person injured who sustained minor and not life-threatening injuries.

**Vehicle:** Include motor vehicles, trolleybuses, motorcycles, bicycles, motorbikes, agricultural and road making machines, animal and hand-drawn vehicles. Railway vehicles are excluded, unless the road accident involves at least one of the aforementioned types of vehicles and therefore, railway vehicles are considered vehicles.

**Methodology** The forms of the survey are filled in by the local Police Authorities and the local Port Authorities as well.

**References** More information about Road Traffic Accidents is available on ELSTAT's website and more specifically at the link: <https://www.statistics.gr/en/statistics/-/publication/SDT03/>.