



INDUSTRIAL PRODUCTION INDEX: November 2025, y-o-y increase of 2.6%

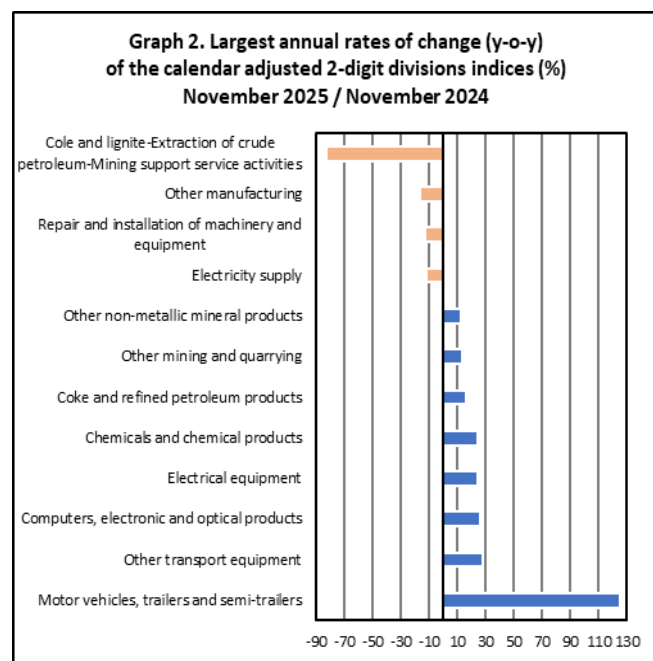
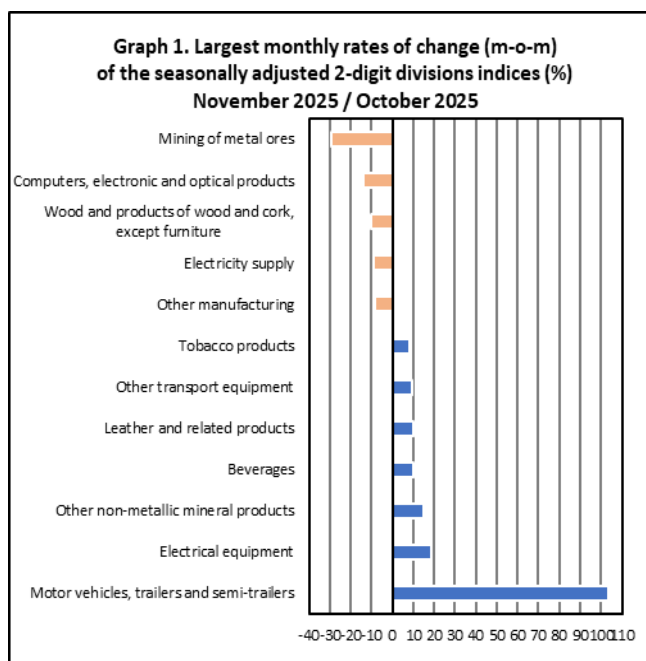
The Hellenic Statistical Authority announces the Industrial Production Index (IPI) with base year 2015=100.0 for November 2025, the evolution of which, on the basis of provisional and working day adjusted data, is as follows:

The Overall Industrial Production Index in November 2025 recorded an increase of 2.6% compared with November 2024. The Overall IPI in November 2024 increased by 3.3% compared with the corresponding index in November 2023 (Table 1).

The average Overall Industrial Production Index for the period from January to November 2025 recorded an increase of 1.4% compared with the average IPI of the period from January to November 2024 (Table 2).

The seasonally adjusted Overall Industrial Production Index in November 2025 recorded a decrease of 1.6% compared with the corresponding index of October 2025 (Table 4).

The index of mining of metal ores division showed the greatest percentage decrease, whereas the index of motor vehicles, trailers and semi-trailers division recorded the greatest percentage increase in November 2025 compared with October 2025. Comparing the indices of November 2025 with the corresponding indices of November 2024, the greatest percentage increase was recorded in motor vehicles, trailers and semi-trailers division, while the highest percentage decrease was recorded in mining of coal and lignite – extraction of crude petroleum and natural gas – mining support service activities divisions (Tables 1 and 4).



Information on methodological issues:

Business Statistics Division
Manufacture-Construction Indices and Industrial Products Section
Head of the Section: Vlachokosta Evrydiki
Tel: +30 213 135 2056
E-mail: e.vlachokosta@statistics.gr

Information on data provision:

Tel: +30 213 135 2024, 2308, 2310
E-mail: data.dissem@statistics.gr

Evolution of the Industrial Production Index in November 2025

I. Annual changes: November 2025 / November 2024 (Table 1)

The 2.6% increase of the working day adjusted Overall IPI in November 2025, compared with the corresponding index in November 2024, is due to the annual changes of the sub-indices in the following industrial sections:

Increase of:

- 7.0% in the Manufacturing Index. The increase was mainly the result of the annual changes of the sub-indices in the following 2-digit divisions: motor vehicles, trailers and semi-trailers, other transport equipment, computers, electronic and optical products, electrical equipment, chemicals and chemical products.
- 2.3% in the Mining and Quarrying Index. The increase was the result of the annual change of the sub-index in the 2-digit division of other mining and quarrying.

Decrease of:

- 5.2% in the Water Supply Index.
- 11.9% in the Electricity Supply Index.

II. Rates of change of the average index of the period January - November 2025 compared with the corresponding index of the period January - November 2024 (Table 2)

The 1.4% increase of the working day adjusted average Overall IPI in the 11-month period January - November 2025, compared with the corresponding index in January - November 2024, is due to the corresponding rates of change of the sub-indices in the following industrial sections:

Increase of:

- 4.4% in the Mining and Quarrying Index.
- 2.1% in the Manufacturing Index.

Decrease of:

- 0.7% in the Electricity Supply Index.
- 4.0% in the Water Supply Index.

III. Monthly changes: November 2025 / October 2025 (Table 4)

The 1.6% decrease of the seasonally adjusted Overall IPI in November 2025, compared with the corresponding index in October 2025, is due to the monthly changes of the sub-indices in the following industrial sections:

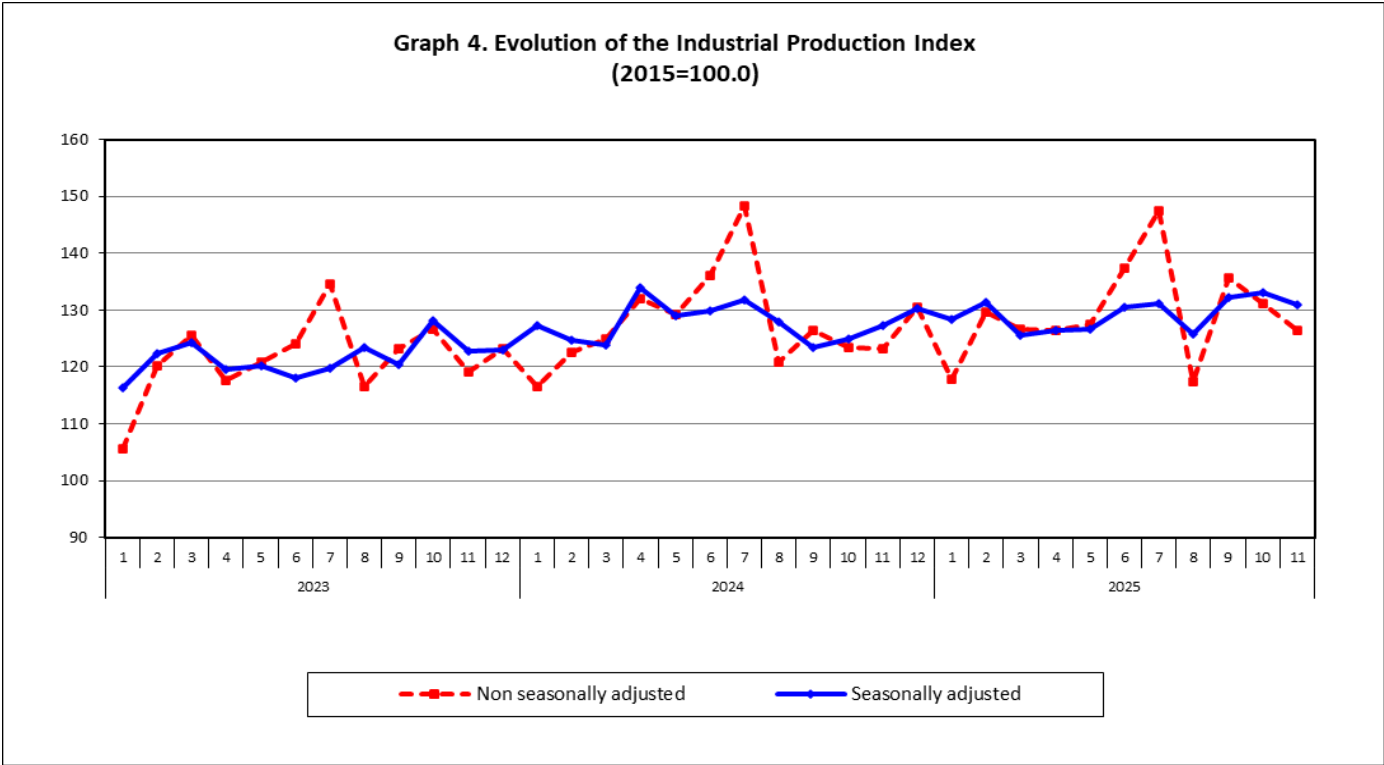
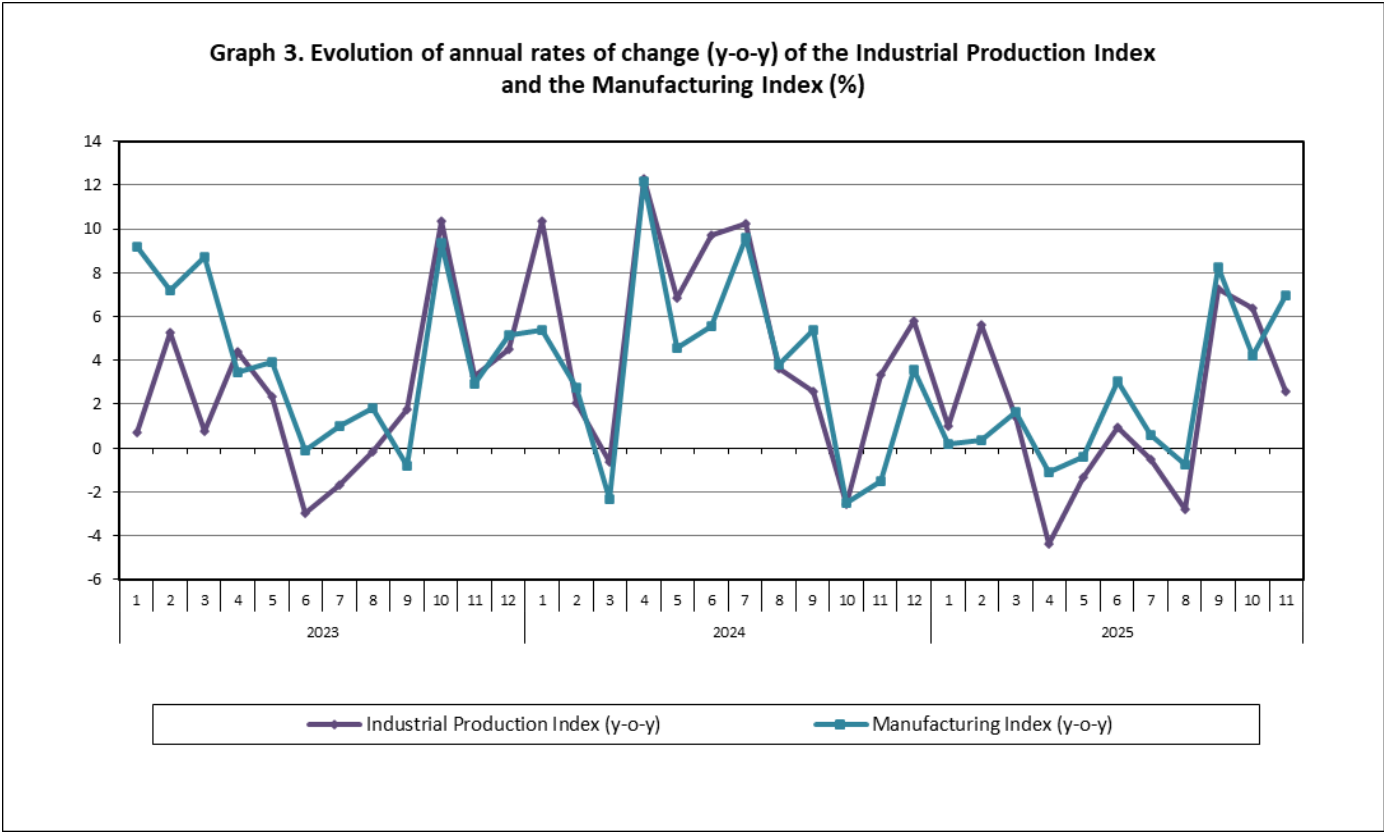
Decrease of:

- 9.2% in the Electricity Supply Index.
- 5.0% in the Mining and Quarrying Index.

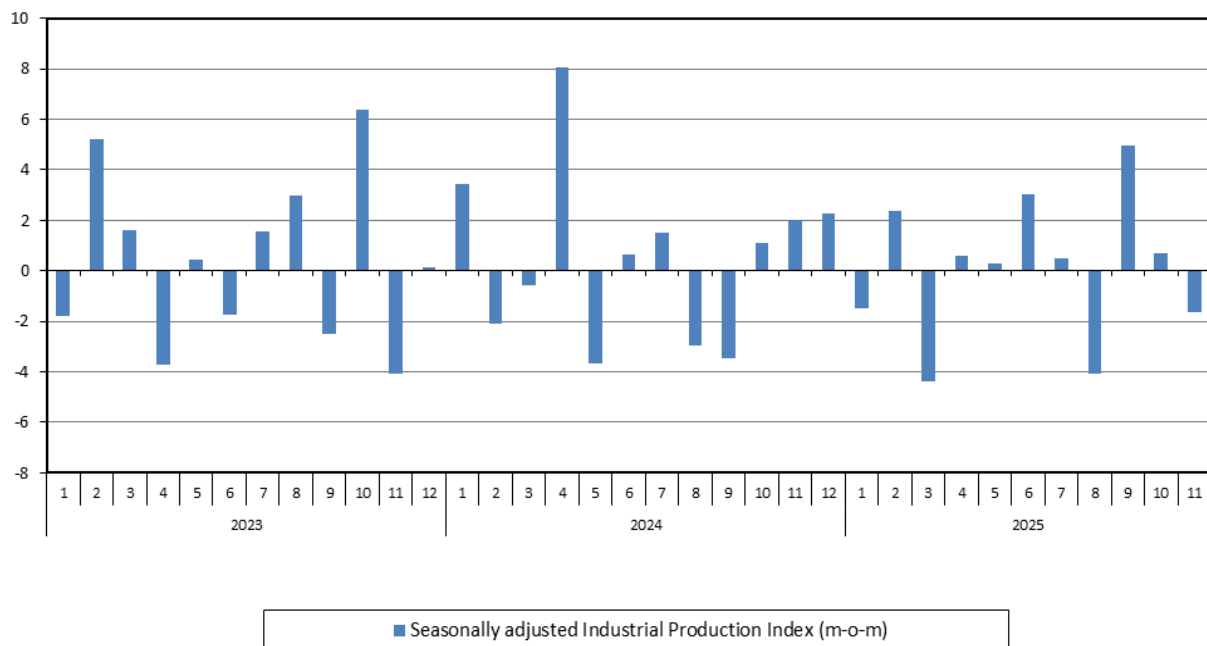
Increase of:

- 0.4% in the Manufacturing Index.
- 5.8% in the Water Supply Index.

The following graphs depict the annual rates of change (y-o-y) of the Industrial Production Index and the Manufacturing Index, the evolution of the seasonally and non-seasonally adjusted Overall Industrial Production Index, as well as the monthly rates of change (m-o-m) of the seasonally adjusted index.



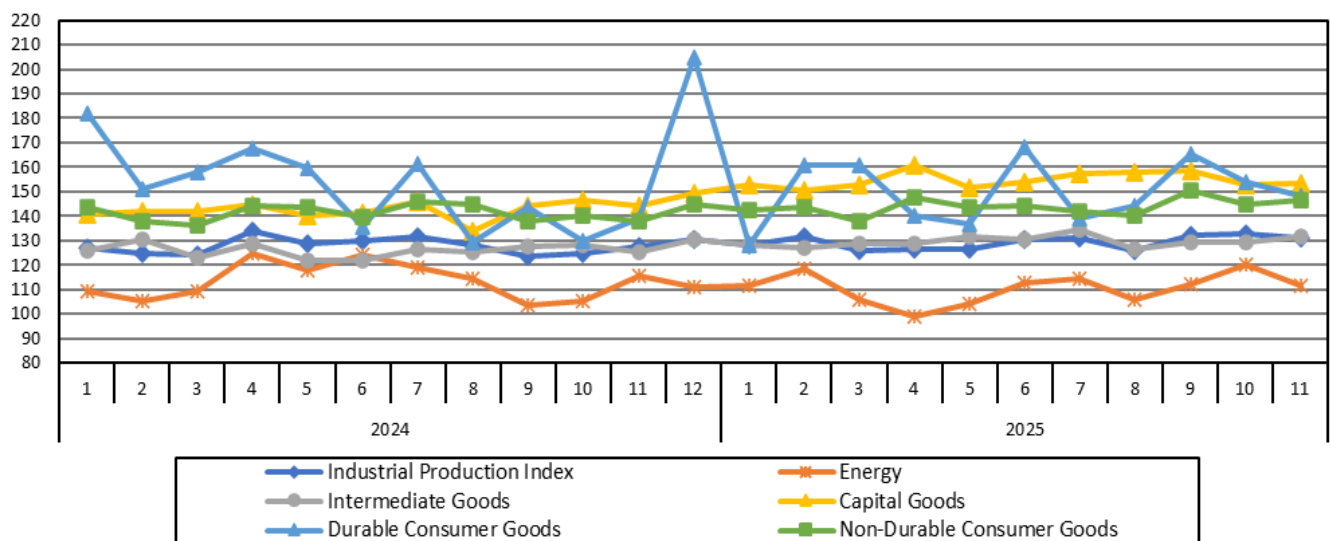
Graph 5. Evolution of the monthly rates of change (m-o-m) of the seasonally adjusted Industrial Production Index (%)



It should be noted that the time series with the seasonally adjusted indices is recalculated every time a new observation is added in the time series. Therefore, the seasonally adjusted data differ from the data published in the previous Announcement.

The following graphs depict the evolution of the seasonally adjusted Industrial Production Index and the Main Industrial Groupings, as well as the evolution of the Industrial Production Index and the Industrial Sections Indices.

Graph 6. Evolution of the seasonally adjusted Industrial Production Index and the Main Industrial Groupings Indices, January 2024 - November 2025 (2015=100.0)



**Graph 7. Evolution of the Industrial Production Index and the Industrial Section Indices
(2015=100.0)**

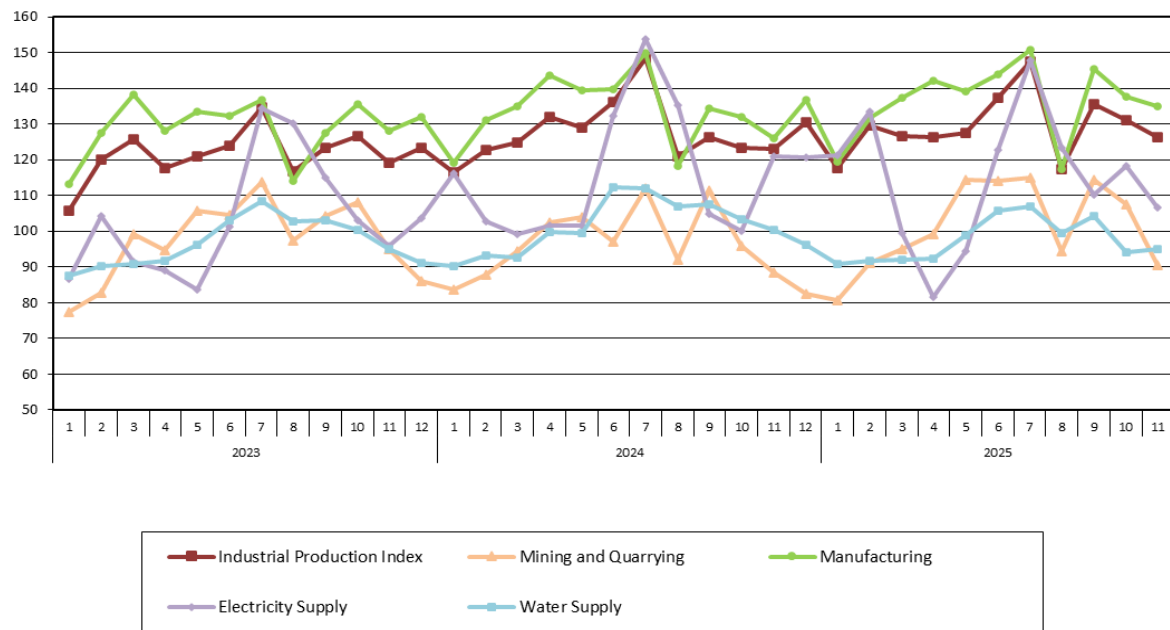


Table 1. Annual rates of change of the Industrial Production Index*(Working day adjusted data, according to the real number of working days)***Base year: 2015=100.0**

Code		Division	November			Rate of change (%)	
			2025*	2024*	2023	2025/2024	2024/2023
OVERALL INDEX			126.33	123.15	119.19	2.6	3.3
B	MINING AND QUARRYING		90.48	88.45	94.85	2.3	-6.8
05-06-09	Mining of coal and lignite – Extraction of crude petroleum and natural gas – Mining support service activities		6.86	40.22	24.72	-82.9	62.7
07	Mining of metal ores		104.11	114.47	147.02	-9.1	-22.1
08	Other mining and quarrying		98.09	86.58	87.21	13.3	-0.7
C	MANUFACTURING		134.92	126.12	128.03	7.0	-1.5
10	Food		116.12	110.12	105.97	5.4	3.9
11	Beverages		75.68	68.25	73.48	10.9	-7.1
12	Tobacco products		165.65	161.07	136.66	2.8	17.9
13	Textiles		111.38	114.61	99.30	-2.8	15.4
14	Wearing apparel		59.66	66.14	67.12	-9.8	-1.4
15	Leather and related products		63.77	68.78	74.40	-7.3	-7.6
16	Wood and products of wood and cork, except furniture		83.50	88.52	110.42	-5.7	-19.8
17	Paper and paper products		111.06	114.74	117.18	-3.2	-2.1
18	Printing and reproduction of recorded products		153.67	146.51	145.07	4.9	1.0
19	Coke and refined petroleum products		119.22	102.76	115.61	16.0	-11.1
20	Chemicals and chemical products		135.12	109.06	120.77	23.9	-9.7
21	Basic pharmaceutical products and pharmaceutical preparations		279.09	261.63	274.78	6.7	-4.8
22	Rubber and plastic products		125.60	123.67	123.80	1.6	-0.1
23	Other non-metallic mineral products		165.95	148.21	133.98	12.0	10.6
24	Basic metals		141.16	149.97	126.93	-5.9	18.2
25	Fabricated metal products, except machinery and equipment		137.59	144.91	153.31	-5.1	-5.5
26	Computers, electronic and optical products		286.76	227.48	302.45	26.1	-24.8
27	Electrical equipment		182.64	147.13	158.14	24.1	-7.0
28	Machinery and equipment n. e. c.		134.32	124.76	132.03	7.7	-5.5
29	Motor vehicles, trailers and semi-trailers		357.68	159.05	267.77	124.9	-40.6
30	Other transport equipment		85.38	66.62	72.95	28.2	-8.7
31	Furniture		140.48	138.10	147.42	1.7	-6.3
32	Other manufacturing		114.84	137.20	131.78	-16.3	4.1
33	Repair and installation of machinery and equipment		113.64	130.80	107.39	-13.1	21.8
D	ELECTRICITY SUPPLY		106.49	120.91	95.93	-11.9	26.0
35	Electricity supply		106.49	120.91	95.93	-11.9	26.0
E	WATER SUPPLY		95.07	100.32	95.06	-5.2	5.5
36	Water collection, treatment and supply		95.07	100.32	95.06	-5.2	5.5
MAIN INDUSTRIAL GROUPINGS							
1	Energy		109.09	113.00	101.92	-3.5	10.9
2	Intermediate goods		131.76	125.18	122.05	5.3	2.6
3	Capital goods		156.72	148.99	156.70	5.2	-4.9
4	Consumer Durables		149.14	141.46	174.14	5.4	-18.8
5	Consumer Non-Durables		133.80	126.12	125.16	6.1	0.8

* Provisional data

Note: The indices are rounded up to two decimal digits when published and percentage changes up to one decimal digit when published.

Table 2. Average indices of the period January – November and rates of change of the Industrial Production Index
(Working day adjusted data, according to the real number of working days)

Base year: 2015=100.0

Code		Division	Average indices of the period Jan.-November			Rate of change (%)	
			2025*	2024*	2023	2025/2024	2024/2023
OVERALL INDEX			129.39	127.54	121.35	1.4	5.1
B	MINING AND QUARRYING		101.47	97.20	98.42	4.4	-1.2
05-06-09	Mining of coal and lignite – Extraction of crude petroleum and natural gas – Mining support service activities		17.77	20.13	24.52	-11.7	-17.9
07	Mining of metal ores		116.61	122.66	127.76	-4.9	-4.0
08	Other mining and quarrying		108.56	99.76	99.18	8.8	0.6
C	MANUFACTURING		136.30	133.47	128.66	2.1	3.7
10	Food		127.94	123.68	116.91	3.4	5.8
11	Beverages		110.77	111.90	105.96	-1.0	5.6
12	Tobacco products		174.65	160.02	140.77	9.1	13.7
13	Textiles		112.29	107.64	108.76	4.3	-1.0
14	Wearing apparel		58.34	64.18	72.19	-9.1	-11.1
15	Leather and related products		71.02	90.11	96.52	-21.2	-6.6
16	Wood and products of wood and cork, except furniture		103.47	98.99	107.99	4.5	-8.3
17	Paper and paper products		114.01	114.10	114.19	-0.1	-0.1
18	Printing and reproduction of recorded products		145.54	139.70	128.04	4.2	9.1
19	Coke and refined petroleum products		108.20	113.63	111.04	-4.8	2.3
20	Chemicals and chemical products		140.11	134.49	126.67	4.2	6.2
21	Basic pharmaceutical products and pharmaceutical preparations		275.42	275.14	279.20	0.1	-1.5
22	Rubber and plastic products		132.03	128.38	124.93	2.8	2.8
23	Other non-metallic mineral products		143.15	143.16	129.37	0.0	10.7
24	Basic metals		151.35	136.34	128.08	11.0	6.5
25	Fabricated metal products, except machinery and equipment		143.90	141.60	137.66	1.6	2.9
26	Computers, electronic and optical products		259.05	236.51	234.51	9.5	0.9
27	Electrical equipment		148.62	146.62	139.66	1.4	5.0
28	Machinery and equipment n. e. c.		136.09	123.52	123.16	10.2	0.3
29	Motor vehicles, trailers and semi-trailers		160.39	140.52	172.77	14.1	-18.7
30	Other transport equipment		69.90	67.50	68.40	3.6	-1.3
31	Furniture		137.49	143.43	148.84	-4.1	-3.6
32	Other manufacturing		129.94	136.88	137.51	-5.1	-0.5
33	Repair and installation of machinery and equipment		121.85	106.33	94.26	14.6	12.8
D	ELECTRICITY SUPPLY		114.44	115.26	103.15	-0.7	11.7
35	Electricity supply		114.44	115.26	103.15	-0.7	11.7
E	WATER SUPPLY		97.40	101.44	97.24	-4.0	4.3
36	Water collection, treatment and supply		97.40	101.44	97.24	-4.0	4.3
MAIN INDUSTRIAL GROUPINGS							
1	Energy		110.52	113.13	104.89	-2.3	7.9
2	Intermediate goods		130.81	126.85	120.67	3.1	5.1
3	Capital goods		148.37	136.43	135.79	8.8	0.5
4	Consumer Durables		150.13	148.80	145.25	0.9	2.4
5	Consumer Non-Durables		145.01	142.07	136.75	2.1	3.9

* Provisional data

Note: The indices are rounded up to two decimal digits when published and percentage changes up to one decimal digit when published.

Table 3. Monthly rate of change of the Industrial Production Index
(Working day adjusted data, according to the real number of working days)

Base year: 2015=100.0

Code	Division	November 2025*	October 2025*	Rate of change (%) Nov. 2025/Oct. 2025
OVERALL INDEX		126.33	131.21	-3.7
B	MINING AND QUARRYING	90.48	107.64	-15.9
05-06-09	Mining of coal and lignite – Extraction of crude petroleum and natural gas – Mining support service activities	6.86	7.07	-2.9
07	Mining of metal ores	104.11	150.25	-30.7
08	Other mining and quarrying	98.09	107.76	-9.0
C	MANUFACTURING	134.92	137.63	-2.0
10	Food	116.12	119.19	-2.6
11	Beverages	75.68	81.27	-6.9
12	Tobacco products	165.65	157.31	5.3
13	Textiles	111.38	116.46	-4.4
14	Wearing apparel	59.66	64.19	-7.1
15	Leather and related products	63.77	63.93	-0.2
16	Wood and products of wood and cork, except furniture	83.50	97.68	-14.5
17	Paper and paper products	111.06	112.88	-1.6
18	Printing and reproduction of recorded products	153.67	159.76	-3.8
19	Coke and refined petroleum products	119.22	119.98	-0.6
20	Chemicals and chemical products	135.12	133.76	1.0
21	Basic pharmaceutical products and pharmaceutical preparations	279.09	319.04	-12.5
22	Rubber and plastic products	125.60	131.68	-4.6
23	Other non-metallic mineral products	165.95	147.18	12.8
24	Basic metals	141.16	146.16	-3.4
25	Fabricated metal products, except machinery and equipment	137.59	148.76	-7.5
26	Computers, electronic and optical products	286.76	315.39	-9.1
27	Electrical equipment	182.64	149.32	22.3
28	Machinery and equipment n. e. c.	134.32	142.16	-5.5
29	Motor vehicles, trailers and semi-trailers	357.68	136.76	161.5
30	Other transport equipment	85.38	66.47	28.5
31	Furniture	140.48	149.08	-5.8
32	Other manufacturing	114.84	141.79	-19.0
33	Repair and installation of machinery and equipment	113.64	112.29	1.2
D	ELECTRICITY SUPPLY	106.49	118.33	-10.0
35	Electricity supply	106.49	118.33	-10.0
E	WATER SUPPLY	95.07	94.11	1.0
36	Water collection, treatment and supply	95.07	94.11	1.0
MAIN INDUSTRIAL GROUPINGS				
1	Energy	109.09	116.12	-6.1
2	Intermediate goods	131.76	133.21	-1.1
3	Capital goods	156.72	152.66	2.7
4	Consumer Durables	149.14	152.47	-2.2
5	Consumer Non-Durables	133.80	141.16	-5.2

* Provisional data

Note: The indices are rounded up to two decimal digits when published and percentage changes up to one decimal digit when published.

Table 4. Monthly rate of change of the seasonally adjusted Industrial Production Index

Base year: 2015=100.0

Code	Division	November 2025*	October 2025*	Rate of change (%) Nov. 2025/Oct. 2025
	OVERALL INDEX	130.84	133.00	-1.6
B	MINING AND QUARRYING	94.50	99.50	-5.0
05-06-09	Mining of coal and lignite – Extraction of crude petroleum and natural gas – Mining support service activities	-	-	-
07	Mining of metal ores	98.49	139.66	-29.5
08	Other mining and quarrying	104.59	98.52	6.2
C	MANUFACTURING	138.91	138.32	0.4
10	Food	129.01	127.55	1.1
11	Beverages	110.26	99.91	10.4
12	Tobacco products	175.00	161.45	8.4
13	Textiles	110.77	110.95	-0.2
14	Wearing apparel	58.01	58.60	-1.0
15	Leather and related products	70.74	64.13	10.3
16	Wood and products of wood and cork, except furniture	91.84	102.57	-10.5
17	Paper and paper products	112.80	110.19	2.4
18	Printing and reproduction of recorded products	145.18	155.44	-6.6
19	Coke and refined petroleum products	118.12	122.29	-3.4
20	Chemicals and chemical products	144.75	134.78	7.4
21	Basic pharmaceutical products and pharmaceutical preparations	280.58	291.80	-3.8
22	Rubber and plastic products	130.03	128.79	1.0
23	Other non-metallic mineral products	158.82	138.31	14.8
24	Basic metals	139.39	143.90	-3.1
25	Fabricated metal products, except machinery and equipment	136.41	144.53	-5.6
26	Computers, electronic and optical products	276.52	320.66	-13.8
27	Electrical equipment	174.02	146.95	18.4
28	Machinery and equipment n. e. c.	135.25	143.54	-5.8
29	Motor vehicles, trailers and semi-trailers	287.98	141.49	103.5
30	Other transport equipment	77.67	71.16	9.1
31	Furniture	140.47	145.61	-3.5
32	Other manufacturing	120.53	131.84	-8.6
33	Repair and installation of machinery and equipment	121.77	123.45	-1.4
D	ELECTRICITY SUPPLY	114.19	125.80	-9.2
35	Electricity supply	114.19	125.80	-9.2
E	WATER SUPPLY	98.43	93.07	5.8
36	Water collection, treatment and supply	98.43	93.07	5.8
	MAIN INDUSTRIAL GROUPINGS			
1	Energy	111.69	120.37	-7.2
2	Intermediate goods	131.83	129.18	2.0
3	Capital goods	153.47	152.93	0.4
4	Consumer Durables	148.09	154.07	-3.9
5	Consumer Non-Durables	146.38	144.89	1.0

Notes:

1. The indices are rounded up to two decimal digits when published and percentage changes up to one decimal digit when published.
2. The whole time-series with seasonally adjusted indices is recalculated every time a new observation is added in the time-series.
3. The composed index of divisions 05-06-09 is not seasonally adjusted.

Table 5. Evolution of the Overall Industrial Production Index
(Working day adjusted data, according to the real number of working days)

Base year: 2015=100.0

Year and month	Overall Index	Monthly rate of change (%)	Annual rate of change (%)	12-month average index (moving average)	Rate of change of the 12-month average index (%)
2023:					
1	105.63	-10.5	0.7	118.83	2.5
2	120.18	13.8	5.3	119.33	2.5
3	125.66	4.6	0.7	119.41	1.8
4	117.60	-6.4	4.4	119.82	2.5
5	120.86	2.8	2.3	120.05	2.4
6	124.05	2.6	-3.0	119.73	1.3
7	134.56	8.5	-1.7	119.54	0.5
8	116.61	-13.3	-0.2	119.53	0.1
9	123.27	5.7	1.8	119.71	0.4
10	126.57	2.7	10.3	120.70	1.4
11	119.19	-5.8	3.3	121.01	1.8
12	123.30	3.4	4.5	121.46	2.3
Annual average	121.46				
2024*:					
1	116.56	-5.5	10.3	122.37	3.0
2	122.64	5.2	2.1	122.57	2.7
3	124.87	1.8	-0.6	122.51	2.6
4	132.08	5.8	12.3	123.71	3.2
5	129.14	-2.2	6.8	124.40	3.6
6	136.13	5.4	9.7	125.41	4.7
7	148.32	9.0	10.2	126.56	5.9
8	120.85	-18.5	3.6	126.91	6.2
9	126.42	4.6	2.6	127.17	6.2
10	123.34	-2.4	-2.6	126.90	5.1
11	123.15	-0.2	3.3	127.23	5.1
12	130.42	5.9	5.8	127.83	5.2
Annual average	127.83				
2025*:					
1	117.74	-9.7	1.0	127.92	4.5
2	129.55	10.0	5.6	128.50	4.8
3	126.61	-2.3	1.4	128.65	5.0
4	126.33	-0.2	-4.4	128.17	3.6
5	127.45	0.9	-1.3	128.03	2.9
6	137.39	7.8	0.9	128.13	2.2
7	147.56	7.4	-0.5	128.07	1.2
8	117.47	-20.4	-2.8	127.79	0.7
9	135.61	15.4	7.3	128.55	1.1
10	131.21	-3.2	6.4	129.21	1.8
11	126.33	-3.7	2.6	129.47	1.8

* Provisional data

Note: The indices are rounded up to two decimal digits when published and percentage changes up to one decimal digit when published.

Table 6. Monthly evolution of the seasonally adjusted Overall Industrial Production Index and Main Industrial Groupings

Base year: 2015=100.0

Year and month		Overall Index		Energy		Intermediate goods		Capital goods		Consumer durables		Consumer non-durables	
		Index	Monthly rate of change (%)	Index	Monthly rate of change (%)	Index	Monthly rate of change (%)	Index	Monthly rate of change (%)	Index	Monthly rate of change (%)	Index	Monthly rate of change (%)
2023:	1	116.24	-1.8	91.46	-9.6	120.53	0.4	142.46	6.1	140.53	-8.5	134.70	2.1
	2	122.29	5.2	107.37	17.4	118.44	-1.7	143.78	0.9	141.01	0.3	136.70	1.5
	3	124.28	1.6	106.98	-0.4	124.14	4.8	142.38	-1.0	138.97	-1.4	139.75	2.2
	4	119.63	-3.7	110.20	3.0	118.22	-4.8	129.66	-8.9	141.63	1.9	128.35	-8.2
	5	120.15	0.4	100.38	-8.9	119.63	1.2	147.25	13.6	143.00	1.0	136.12	6.1
	6	118.04	-1.8	95.40	-5.0	119.60	0.0	142.73	-3.1	142.45	-0.4	136.42	0.2
	7	119.86	1.5	107.56	12.7	115.15	-3.7	131.79	-7.7	146.48	2.8	133.88	-1.9
	8	123.46	3.0	110.40	2.6	119.95	4.2	145.44	10.4	145.27	-0.8	135.07	0.9
	9	120.40	-2.5	110.74	0.3	114.39	-4.6	138.02	-5.1	149.97	3.2	130.58	-3.3
	10	128.06	6.4	111.60	0.8	124.03	8.4	146.88	6.4	161.80	7.9	144.39	10.6
	11	122.85	-4.1	104.46	-6.4	122.08	-1.6	149.89	2.0	168.72	4.3	136.24	-5.6
	12	123.02	0.1	102.72	-1.7	126.58	3.7	151.82	1.3	159.93	-5.2	135.34	-0.7
Annual average		121.52		104.94		120.23		142.67		148.31		135.63	
2024:	1	127.28	3.5	109.18	6.3	126.06	-0.4	140.89	-7.2	182.23	13.9	143.70	6.2
	2	124.63	-2.1	105.26	-3.6	130.32	3.4	141.67	0.6	151.05	-17.1	137.77	-4.1
	3	123.91	-0.6	109.08	3.6	123.20	-5.5	141.81	0.1	157.66	4.4	135.95	-1.3
	4	133.88	8.0	124.71	14.3	128.64	4.4	144.81	2.1	167.46	6.2	144.43	6.2
	5	128.98	-3.7	117.90	-5.5	121.81	-5.3	139.94	-3.4	159.91	-4.5	143.49	-0.7
	6	129.81	0.6	124.01	5.2	121.66	-0.1	141.29	1.0	135.84	-15.1	139.81	-2.6
	7	131.79	1.5	119.14	-3.9	126.51	4.0	145.76	3.2	161.37	18.8	145.98	4.4
	8	127.87	-3.0	114.15	-4.2	125.31	-1.0	133.71	-8.3	129.45	-19.8	144.81	-0.8
	9	123.45	-3.5	103.52	-9.3	127.77	2.0	144.14	7.8	143.74	11.0	137.67	-4.9
	10	124.82	1.1	105.33	1.7	128.02	0.2	146.45	1.6	129.79	-9.7	139.93	1.6
	11	127.35	2.0	115.72	9.9	125.26	-2.2	144.45	-1.4	139.19	7.2	137.93	-1.4
	12	130.23	2.3	110.90	-4.2	130.45	4.1	149.19	3.3	205.11	47.4	144.62	4.9
Annual average		127.83		113.24		126.25		142.84		155.23		141.34	
2025:	1	128.31	-1.5	111.28	0.3	128.12	-1.8	152.79	2.4	128.22	-37.5	142.59	-1.4
	2	131.37	2.4	118.69	6.7	126.98	-0.9	150.66	-1.4	160.97	25.5	143.52	0.7
	3	125.62	-4.4	105.95	-10.7	128.52	1.2	153.03	1.6	160.52	-0.3	138.13	-3.8
	4	126.34	0.6	99.00	-6.6	128.98	0.4	160.99	5.2	140.41	-12.5	147.47	6.8
	5	126.69	0.3	103.97	5.0	131.35	1.8	151.40	-6.0	136.63	-2.7	143.49	-2.7
	6	130.56	3.1	112.40	8.1	130.53	-0.6	154.02	1.7	168.51	23.3	144.41	0.6
	7	131.21	0.5	114.43	1.8	134.52	3.1	157.18	2.1	138.75	-17.7	141.68	-1.9
	8	125.88	-4.1	105.89	-7.5	126.28	-6.1	158.01	0.5	144.01	3.8	140.32	-1.0
	9	132.11	5.0	111.97	5.7	129.02	2.2	158.24	0.1	165.44	14.9	150.25	7.1
	10	133.00	0.7	120.37	7.5	129.18	0.1	152.93	-3.4	154.07	-6.9	144.89	-3.6
	11	130.84	-1.6	111.69	-7.2	131.83	2.0	153.47	0.4	148.09	-3.9	146.38	1.0

Notes:

1. The indices are rounded up to two decimal digits when published and percentage changes up to one decimal digit when published.
2. The whole time-series with seasonally adjusted indices is recalculated every time a new observation is added in the time-series.

METHODOLOGICAL NOTES

Generally	The Industrial Production Index (IPI) in Greece has been compiled by the Hellenic Statistical Authority (ELSTAT) from 1959 onwards.
Purpose of the index	The objective of the index is to compare the magnitude (volume) of the output in the current month in the mining and quarrying, manufacturing, electricity and water supply divisions with the corresponding output of a given fixed period, which is considered as base period. The Industrial Production Index shows the evolution of the value added of the production factors cost, at constant prices.
Legal framework	The compilation of the IPI is based on the framework of the implementation of Council Regulation (EC) No 1165/1998 concerning short-term statistics (STS-R). Furthermore, the IPI is governed by Regulation (EC) No 1893/2006 of the European Parliament and of the Council, by Commission Regulation (EC) No 656/2007, by Council Regulation (EC) No 451/2008, by Regulation (EU) No 2019/2152 of the European Parliament and of the Council on European business statistics, as well as Commission Implementing Regulation (EU) No 2020/1197 laying down technical specifications and arrangements pursuant to Regulation (EU) No 2019/2152.
Reference period	Month.
Base year	2015=100.0.
Revision	The IPI is a fixed base index. The Industrial Production Index was currently revised with new base year 2015 (2015=100.0) according to the provisions of Council Regulation No 1165/1998 concerning short-term statistics. Short-term indices are revised every five (5) years, particularly in calendar years ending in 0 or 5.
Statistical classifications	At the level of branches of economic activities, the statistical classification of economic activities NACE Rev.2 of EU was used (Regulation No 1893/2006), while at the level of main industrial groupings, the allocation of two-digit and three-digit NACE Rev. 2 headings to categories of aggregate classification was used, in accordance with Council Regulation No 656/2007. At product level, the statistical classification CPA 2008 of EU was used, according to Council Regulation No 451/2008.
Geographical coverage	The index covers the whole Country.
Coverage of economic activities	The index covers all the sections of industry, the main industrial groups, as well as all levels of economic activity.
Statistical survey	The data are collected from a sample of 1,263 enterprises. The survey covers 325 products and the measurement of the surveyed products is made in terms of output quantities or in terms of production value or turnover, according to the specific features in each branch of economic activity.
Seasonal adjustment	Seasonal adjustment is the procedure followed to remove the impact of seasonality on the time-series (i.e. the impact of monthly effects, e.g. holidays, tourist period etc.), in order to improve comparability over time. The method applied is TRAMO-SEATS with the use of JDemetra+ 2.0.0. For the seasonal adjustment of the Industrial Production Index at 2-digit level of NACE Rev.2, at section level (B – Mining and Quarrying, C – Manufacturing, D – Electricity and E – Water Supply) and for the Main Industrial Groupings (MIGs), the direct approach is applied, namely each time-series is seasonally adjusted independently. For the overall Industrial Production Index, the indirect approach is applied, with the seasonally adjusted IPI being computed by aggregating the seasonally adjusted MIGs using appropriate weights.
Publication of data	The revised IPI with the new base year 2015 (2015=100.0) is released since July 2019, with May 2019 as the first reference month. Data with base year 2015=100.0 are available from January 2000 onwards.
References	More information about the methodology concerning the compilation and calculation of the index and the time series are available on the website of the Hellenic Statistical Authority (ELSTAT) (http://www.statistics.gr/en/statistics/-/publication/DKT21/-).