



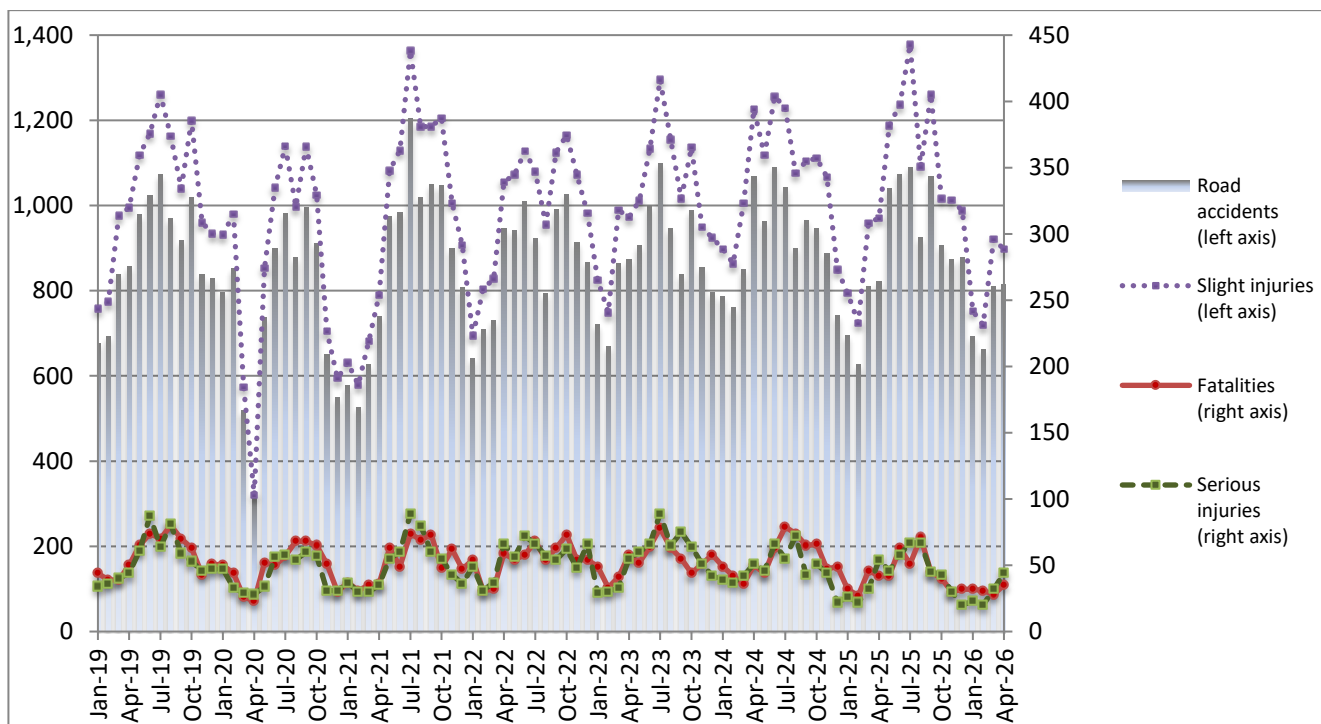
HELLENIC REPUBLIC
HELLENIC STATISTICAL AUTHORITY

ROAD TRAFFIC ACCIDENTS: April 2026

The Hellenic Statistical Authority (ELSTAT) announces provisional¹ data from the survey on “Road Traffic Accidents” for April 2026. In particular, the road traffic accidents which occurred in Greece, resulting in death or injury, decreased by 0.7% in comparison with the corresponding month of 2025 (815 road accidents in April 2026, against 821 road accidents in April 2025).

The casualties of the injury-causing accidents that occurred in April 2026 were as follows: 35 deaths, 44 serious injuries and 897 slight injuries. In April 2025 the corresponding figures were: 42 deaths, 54 serious injuries and 971 slight injuries. Therefore, road traffic accident casualties in April 2026 decreased in deaths by 16.7%, by 18.5% for serious injuries and by 7.6% for slight injuries.

Graph 1: Road traffic accidents and casualties, January 2019 - April 2026



Provisional data for the period May 2025 – April 2026

Information on methodological issues:

Sectoral Statistics Division
Transport Statistics Section
M. Kloumpas
Tel: +30 213 135 3095
e-mail: m.kloumpas@statistics.gr

Information for data provision:

Tel: +30 213 135 2022, 2308, 2310
e-mail: data.dissem@statistics.gr

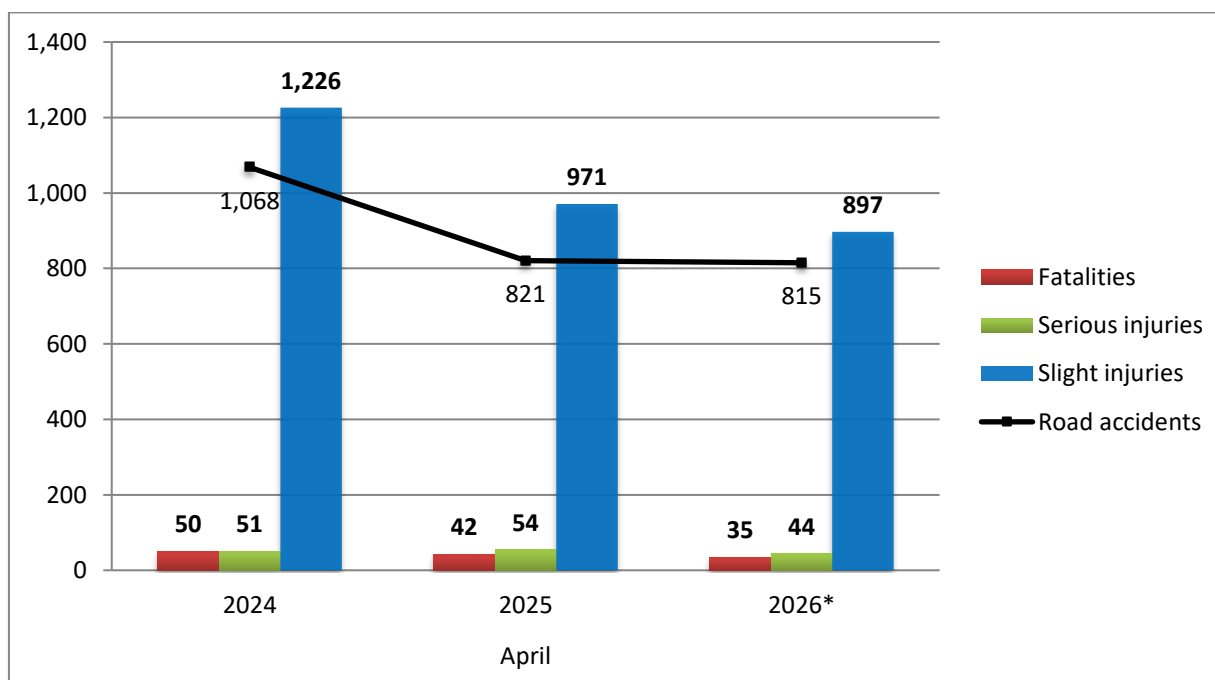
^[1] Data for the reference year is provisional until the finalization of the annual data, which takes place 12 months after the end of the reference year and is published in the corresponding announcement of the following year. During these 12 months the provisional data is updated on the basis of the data of the Road Accident Forms of that year which is transmitted to ELSTAT by Police Authorities (see explanatory notes).

Table 1: Road traffic accidents and casualties, April 2024 - 2026*

	April				
	2024	2025	2025/2024 (%)	2026*	2026*/2025 (%)
Road accidents	1,068	821	-23.1	815	-0.7
Fatalities	50	42	-16.0	35	-16.7
Total injuries	1,277	1,025	-19.7	941	-8.2
Serious injuries	51	54	5.9	44	-18.5
Slight injuries	1,226	971	-20.8	897	-7.6

* Provisional data

Graph 2: Road traffic accidents and casualties, April 2024 - 2026*



* Provisional data

Table 2: Road traffic accidents and casualties, by Region and Department, April 2025 and 2026*

Region and Department	Road accidents			Fatalities			Serious injuries			Slight injuries		
	2025	2026*	%	2025	2026*	%	2025	2026*	%	2025	2026*	%
Greece total	821	815	-0.7	42	35	-16.7	54	44	-18.5	971	897	-7.6
Anatoliki Makedonia and Thraki (East Macedonia and Thrace)	14	19	35.7	1	2	100.0	2	3	50.0	15	17	13.3
Drama	4	5	25.0	0	0		1	0		5	5	
Evros	4	2	-50.0	0	0		0	0		4	2	
Kavala	2	6	200.0	1	1		1	2		2	6	
Xanthi	2	6	200.0	0	1		0	1		2	4	
Rodopi	2	0	-100.0	0	0		0	0		2	0	
Kentriki Makedonia (Central Macedonia)	196	141	-28.1	6	5	-16.7	8	2	-75.0	237	165	-30.4
Imathia	0	2	-	0	1		0	0		0	1	
Thessaloniki	171	132	-22.8	2	2		7	2		211	156	
Kilkis	6	1	-83.3	1	0		0	0		5	1	
Pella	4	1	-75.0	1	1		0	0		5	1	
Pieria	5	0	-100.0	1	0		0	0		7	0	
Serres	6	0	-100.0	0	0		0	0		6	0	
Chalkidiki	4	5	25.0	1	1		1	0		3	6	
Dytiki Makedonia (West Macedonia)	3	4	33.3	2	0	-100.0	1	0	-100.0	3	4	33.3
Grevena	0	1	-	0	0		0	0		0	1	
Kastoria	0	1	-	0	0		0	0		0	1	
Kozani	2	2	0.0	2	0		0	0		3	2	
Florina	1	0	-100.0	0	0		1	0		0	0	
Ipeiros (Epirus)	12	11	-8.3	1	2	100.0	0	3	-	17	11	-35.3
Arta	0	3	-	0	1		0	3		0	0	
Thesprotia	1	2	100.0	0	1		0	0		1	5	
Ioannina	7	4	-42.9	0	0		0	0		11	4	
Preveza	4	2	-50.0	1	0		0	0		5	2	
Thessalia (Thessaly)	24	15	-37.5	4	2	-50.0	6	3	-50.0	30	13	-56.7
Karditsa	5	4	-20.0	1	0		1	0		7	4	
Larissa	6	5	-16.7	0	0		1	1		8	6	
Magnissia	9	3	-66.7	3	2		2	1		7	0	
Trikala	4	3	-25.0	0	0		2	1		8	3	
Ionia Nisia (Ionian Islands)	11	14	27.3	3	2	-33.3	2	1	-50.0	11	13	18.2
Zakynthos	3	3	0.0	1	1		1	1		4	1	
Kerkyra	3	7	133.3	1	1		0	0		4	8	
Kefallinia	3	2	-33.3	0	0		1	0		2	2	
Lefkada	2	2	0.0	1	0		0	0		1	2	

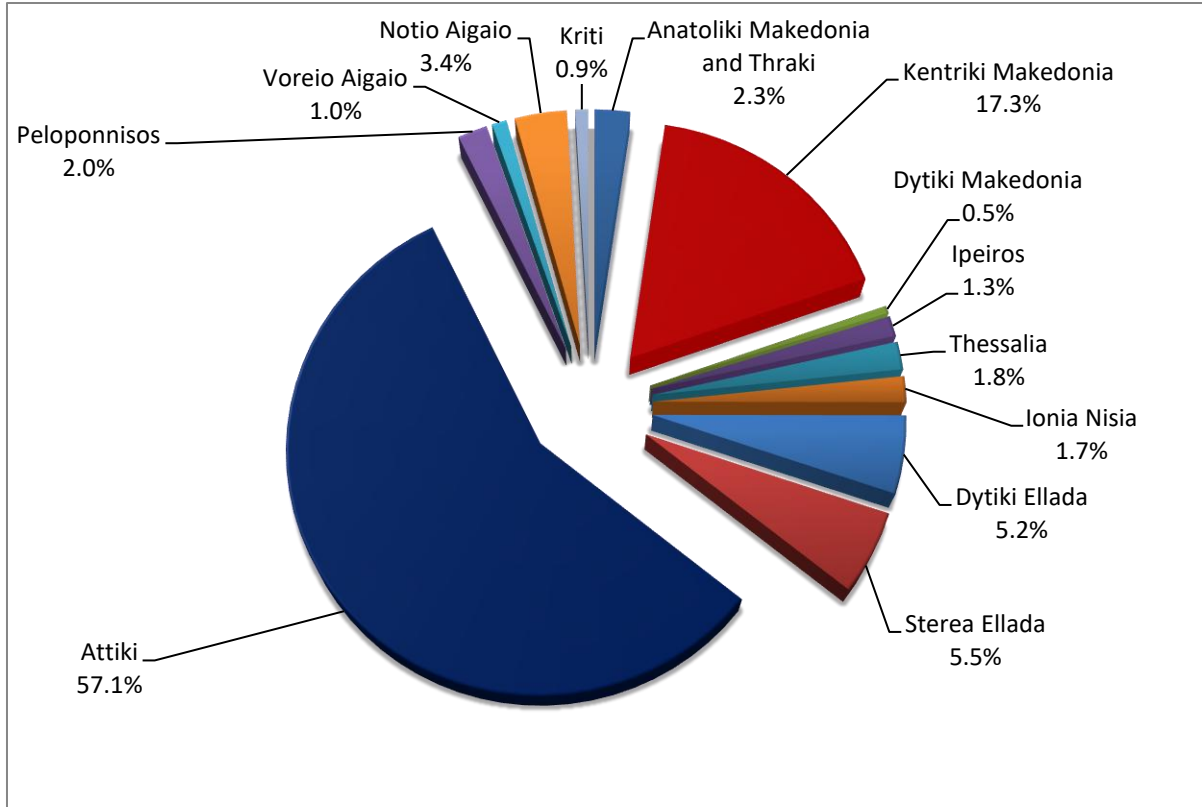
* Provisional data

Table 2: Road traffic accidents and casualties, by Region and Department, April 2025 and 2026*
(Continued)

Region and Department	Road accidents			Fatalities			Serious injuries			Slight injuries		
	2025	2026*	%	2025	2026*	%	2025	2026*	%	2025	2026*	%
Dytiki Ellada (West Greece)	40	42	5.0	3	2	-33.3	4	3	-25.0	47	47	0.0
Etolia & Akarnania	20	20	0.0	0	0		3	0		26	26	
Achaia	15	13	-13.3	1	1		1	1		18	14	
Ilia	5	9	80.0	2	1		0	2		3	7	
Stereia Ellada	32	45	40.6	7	3	-57.1	6	3	-50.0	31	61	96.8
Viotia	4	4	0.0	0	0		0	0		4	7	
Evia	15	28	86.7	4	2		4	3		14	35	
Evrytania	0	3	-	0	1		0	0		0	5	
Fthiotida	8	9	12.5	1	0		0	0		11	11	
Fokida	5	1	-80.0	2	0		2	0		2	3	
Attiki (Attica)	400	465	16.3	7	8	14.3	15	16	6.7	479	514	7.3
Peloponnisos (Peloponnese)	31	16	-48.4	4	5	25.0	2	3	50.0	33	13	-60.6
Argolida	1	4	300.0	0	2		0	1		2	1	
Arkadia	4	4	0.0	2	1		1	0		6	4	
Korinthia	9	4	-55.6	0	1		0	0		9	3	
Lakonia	9	1	-88.9	0	0		0	0		11	1	
Messinia	8	3	-62.5	2	1		1	2		5	4	
Voreio Aigaio (North Aegean)	13	8	-38.5	0	2	-	0	1	-	18	7	-61.1
Lesvos	7	4	-42.9	0	1		0	1		10	2	
Samos	4	2	-50.0	0	0		0	0		6	3	
Chios	2	2	0.0	0	1		0	0		2	2	
Notio Aigaio (South Aegean)	29	28	-3.4	3	1	-66.7	7	4	-42.9	28	26	-7.1
Dodekanissos	25	13	-48.0	3	0		7	3		22	10	
Kyklades	4	15	275.0	0	1		0	1		6	16	
Kriti (Crete)	16	7	-56.3	1	1	0.0	1	2	100.0	22	6	-72.7
Iraklio	6	4	-33.3	1	1		0	1		8	4	
Lassithi	2	0	-100.0	0	0		0	0		6	0	
Rethymno	3	1	-66.7	0	0		0	0		3	1	
Chania	5	2	-60.0	0	0		1	1		5	1	

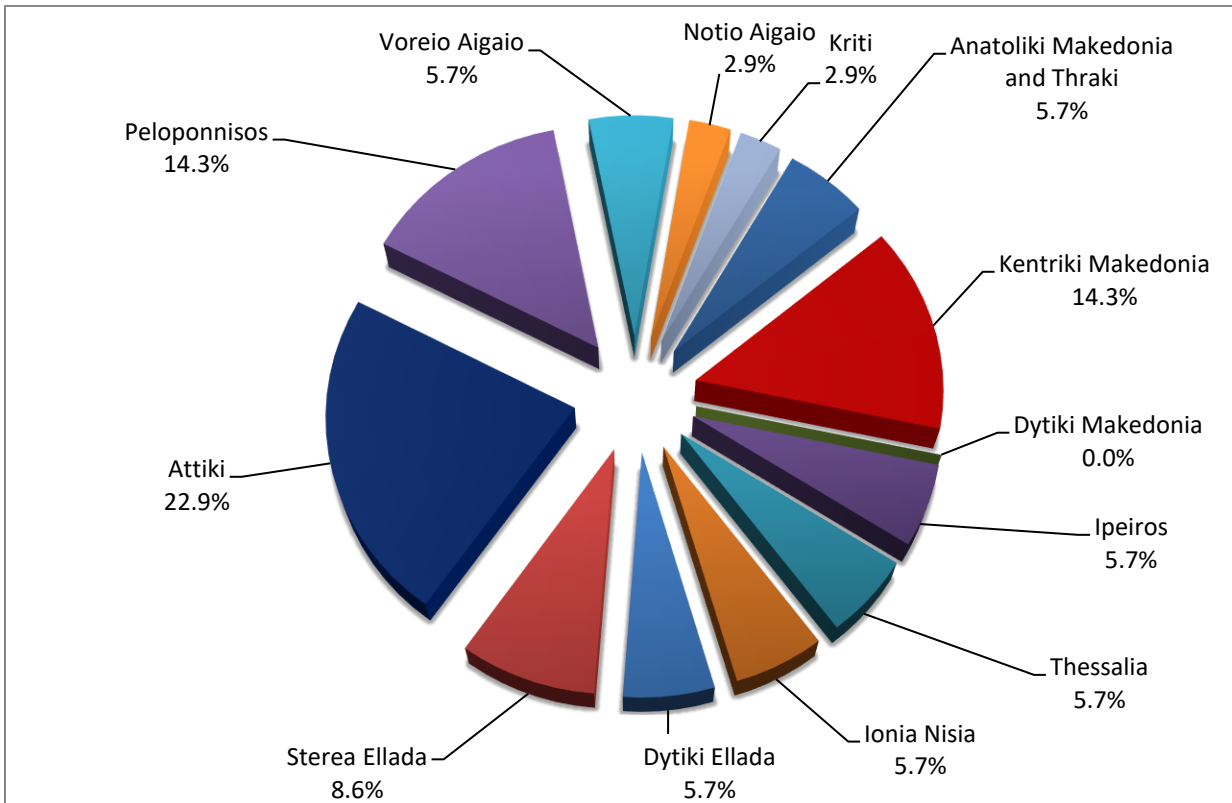
** Provisional data*

Graph 3: Road traffic accidents by Region, April 2026 *



* Provisional data

Graph 4: Fatalities by Region, April 2026 *

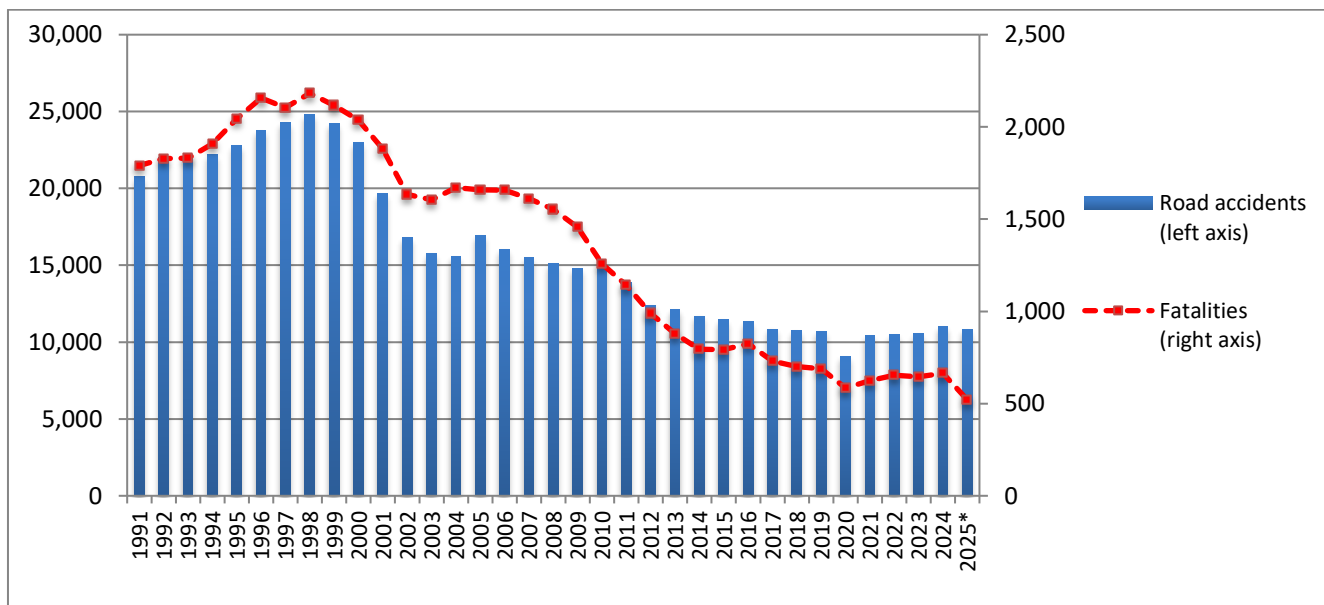


* Provisional data

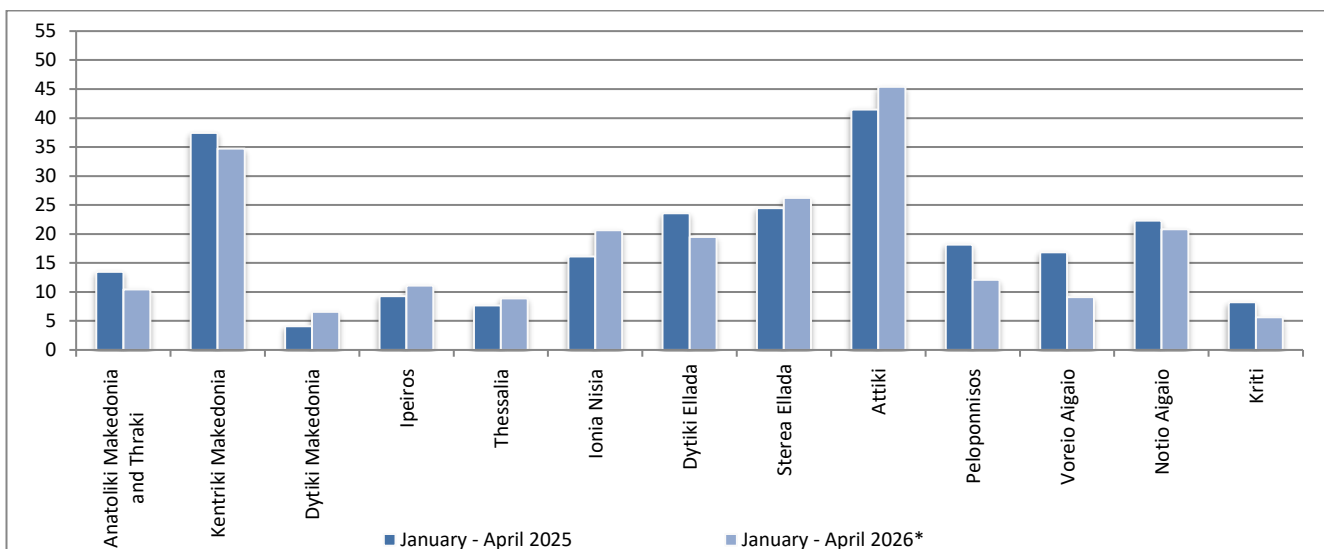
Table 3: Road traffic accidents and casualties for the period January - April 2024,2025 and 2026*

	2024		2025		2026*
	January - April	Total year	January - April	Total year*	January - April
Road Accidents	3,464	11,000	2,954	10,806	2,980
<i>Annual Change (%)</i>			-14.7	-1.8	0.9
Fatalities	177	664	147	521	126
<i>Annual Change (%)</i>			-16.9	-21.5	-14.3
Serious injuries	169	568	134	510	119
<i>Annual Change (%)</i>			-20.7	-10.2	-11.2
Slight injuries	3,993	12,803	3,448	12,620	3,290
<i>Annual Change (%)</i>			-13.6	-1.4	-4.6

Graph 5: Total road traffic accidents and fatalities, 1991-2025*

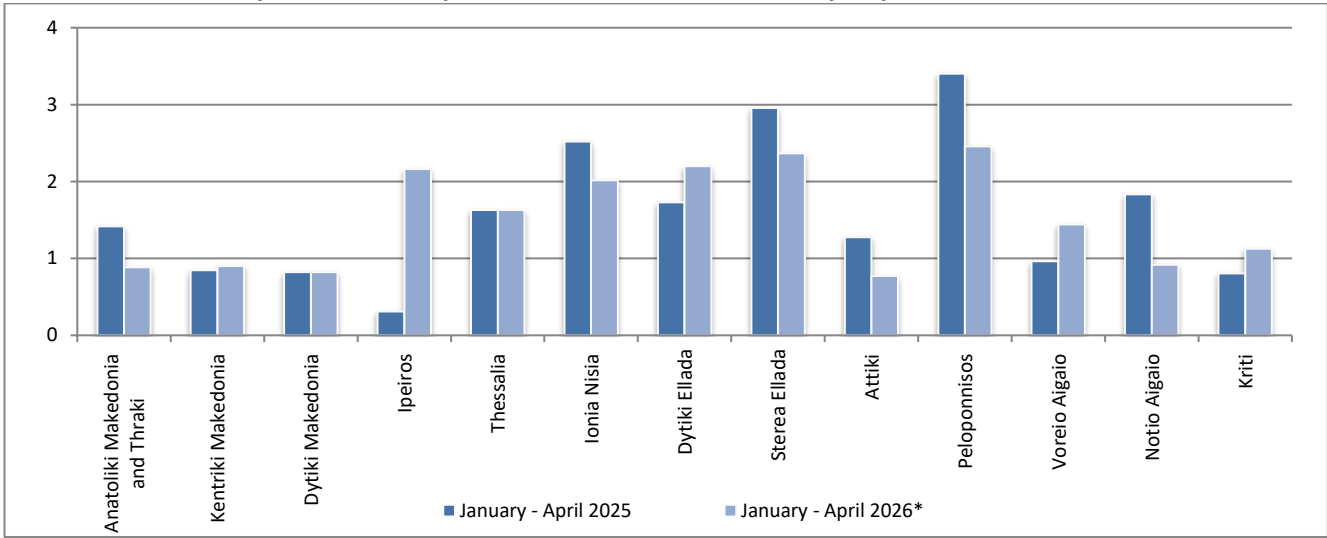


Graph 6: Road traffic accidents per 100,000 inhabitants, January - April 2025 and 2026*

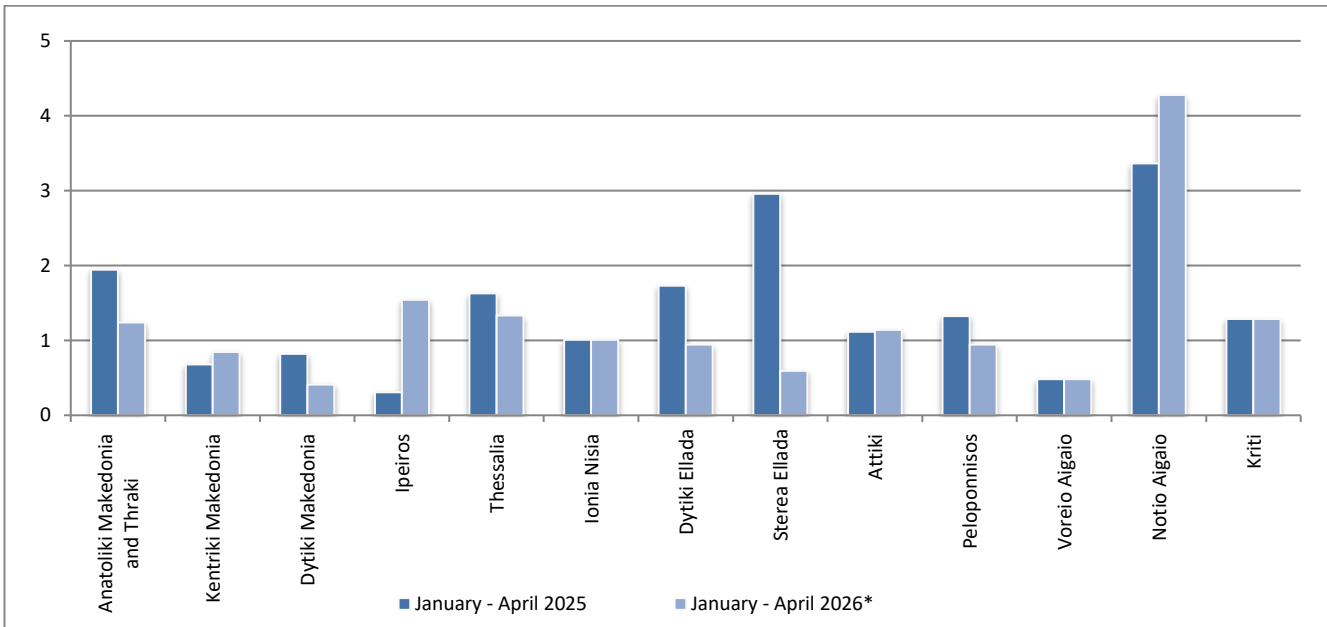


* Provisional data

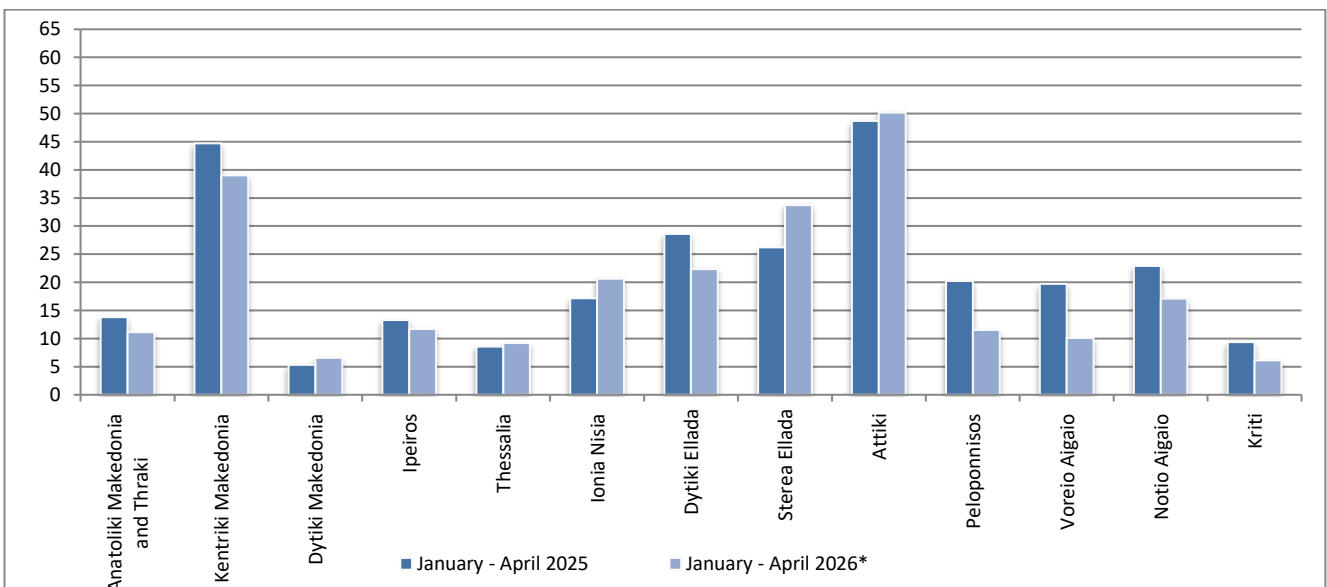
Graph 7: Fatalities per 100,000 inhabitants, January - April 2025 and 2026*



Graph 8: Serious injuries per 100,000 inhabitants, January - April 2025 and 2026*



Graph 9: Slight injuries per 100,000 inhabitants, January - April 2025 and 2026*



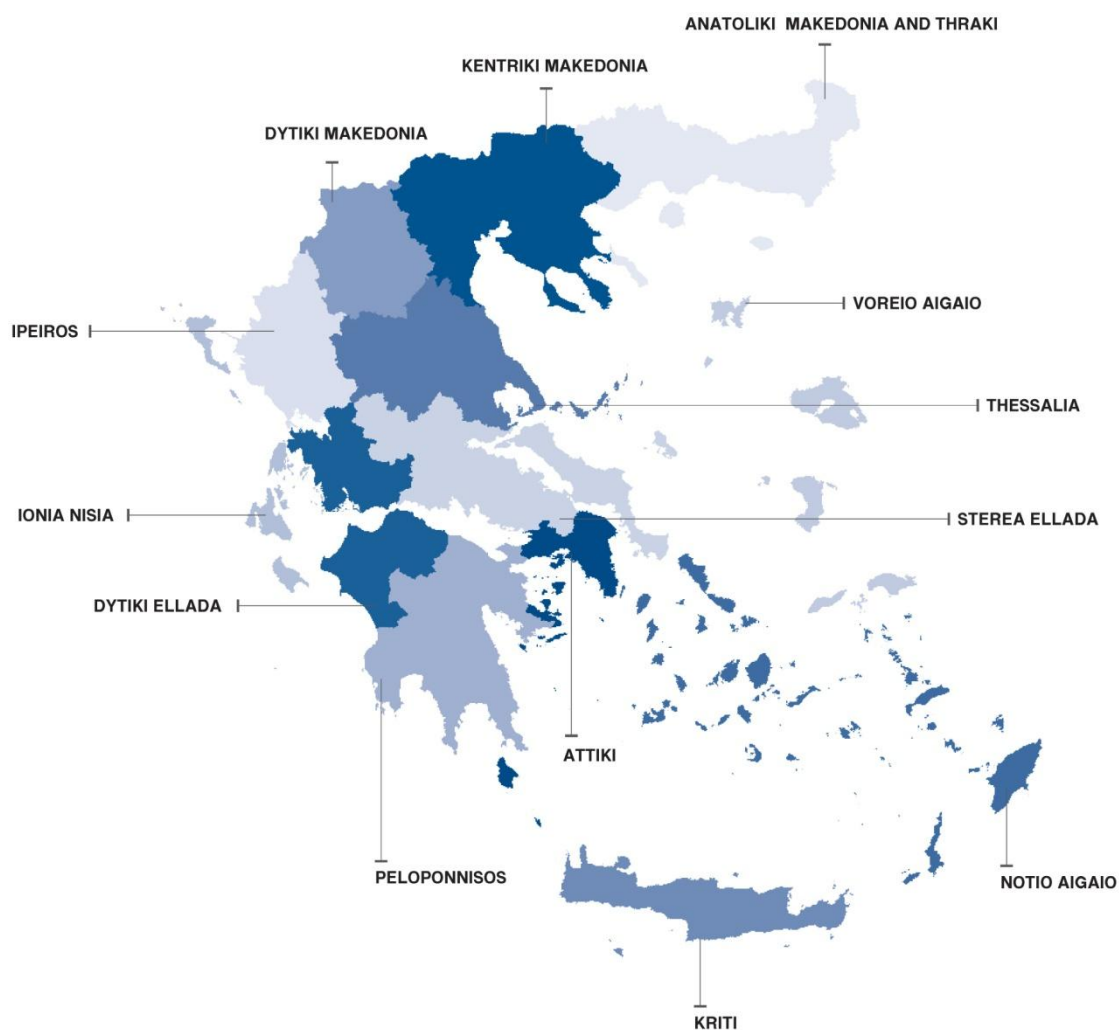
* Provisional data

EXPLANATORY NOTES

Survey on Road Traffic Accidents The Survey on Road Traffic Accidents is conducted on a monthly basis and it records, for each region (see map) and department of Greece and for each month separately, the number of accidents resulting in death or injury, as well as the number of persons injured by categories (drivers, passengers, pedestrians).

On a yearly basis, road traffic accidents are further analyzed. The competent agencies for filling in/collecting the forms on road accidents are the local Police Authorities and the local Port Authorities of Greece.

The lower level of analysis for the place where an injury road accident occurred is the settlement. Data are collected on a monthly basis. The main variables are the following: place of accident, kind of road, casualties, conditions of road surface and type of road.



Legal basis The Survey on Road Traffic Accidents is governed by Council Decision 93/704 of the European Community.

Reference period Monthly.

Availability of data Provisional data are available 2 months after the reference month. Final data are available 14 months after the reference year.

Definitions **Road accident** (injury accident): Any accident involving at least one road motor vehicle in motion on a public road or square to which the public has access (excluding yards, industrial sites or vehicle depot of public transport enterprises), resulting in at least one injured or killed person. Accidents with only material damages are not included.

Fatality (Death): Any person killed immediately or dying within 30 days as a result of an injury accident (This national definition applies since 01.01.1996)

Person injured: Any person who sustained an injury as result of an injury accident, and who normally needs medical treatment.

Serious injury: Any person who sustained an injury as result of an injury accident, such as brain damages, mutilation, multiple injuries, which may result in lack of awareness or which are life-threatening.

Slight injury: Any person injured who sustained minor and not life-threatening injuries.

Vehicle: Include motor vehicles, trolleybuses, motorcycles, bicycles, motorbikes, agricultural and road making machines, animal and hand-drawn vehicles. Railway vehicles are excluded, unless the road accident involves at least one of the aforementioned types of vehicles and therefore, railway vehicles are considered vehicles.

Methodology The forms of the survey are filled in by the local Police Authorities and the local Port Authorities as well.

References More information about Road Traffic Accidents is available on ELSTAT's website and more specifically at the link: <https://www.statistics.gr/en/statistics/-/publication/SDT03/>.