

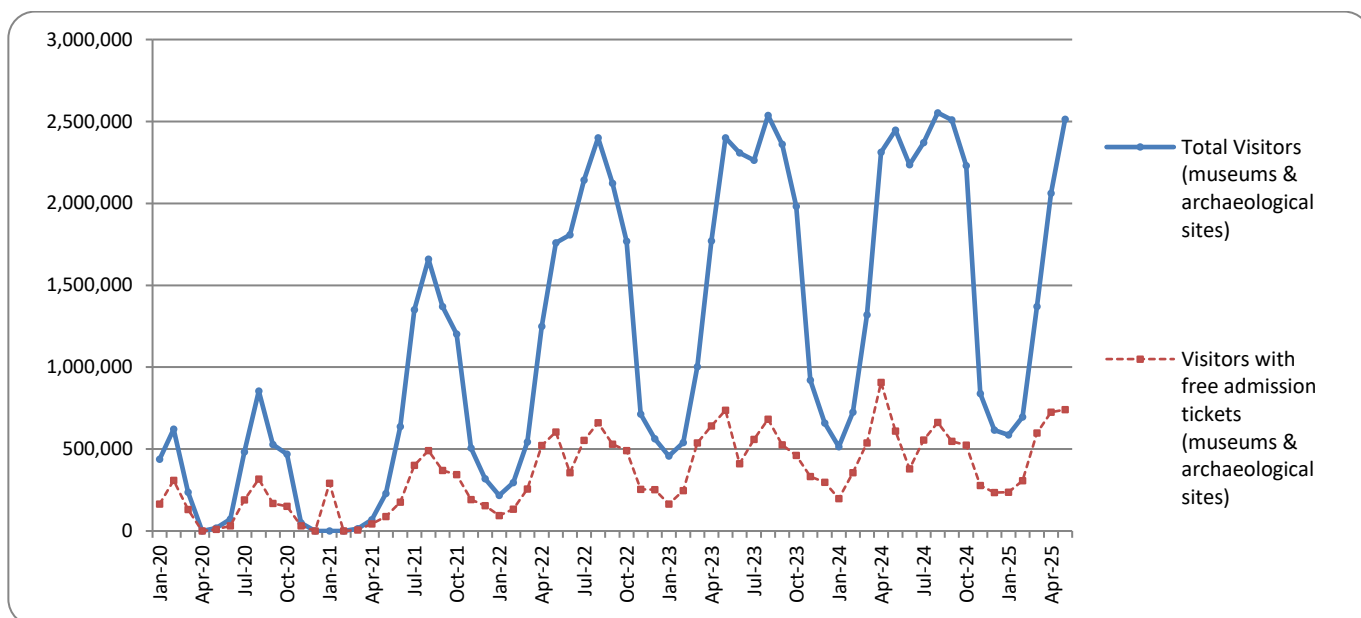


SURVEY ON MUSEUMS AND ARCHAEOLOGICAL SITES ATTENDANCE MAY 2025

The Hellenic Statistical Authority (ELSTAT) announces the results of the *Survey on Museums and Archaeological Sites Attendance* for May 2025. More specifically:

- During May 2025 compared with the corresponding month of 2024, museums recorded an increase of 11.1% in the number of visitors, of 31.9% in the number of free admission visitors and an increase of 42.6% in their receipts (Table 1).
- As regards archaeological sites, in May 2025 compared with the corresponding month of 2024, a decrease of 0.9% was recorded in the number of visitors, increase 15.7% in the number of free admission visitors and an increase of 46.3% in the corresponding receipts (Table 1).
- During the five-month period from January to May 2025, compared with the corresponding period of 2024, a increase of 1.3% was recorded in the number of visitors of museums, of 5.8% in the number of free admission visitors and an increase of 42.4% in the relevant receipts (Table 2).
- As regards archaeological sites, during the five-month period from January to May 2025, compared with the corresponding period of 2024, a decrease of 2.5% was recorded in the number of visitors, of 3.5% in the number of free admission visitors, while an increase of 40.0% was observed in the relevant receipts (Table 2).

Graph 1: Visitors of Museums and Archaeological sites (January 2020 – May 2025)



Information on methodological issues:

Sectoral Statistics Division
Tourism and Culture Statistics Section
Head of Section: Eleni Papadopoulou
Tel: +30 213 135 2168
e-mail: e.papadopoulou@statistics.gr

Information for data provision:

Tel. +30 213 135 2022, 2308, 2310
e-mail: data.dissem@statistics.gr

**TABLE 1: VISITORS OF MUSEUMS AND ARCHAEOLOGICAL SITES - TOTAL RECEIPTS
(MAY 2024 AND MAY 2025)**

I. NUMBER OF VISITORS			
Museums - Archaeological sites	2024	2025	Change 2025/2024
Total number of visitors (A+B)	2,447,335	2,512,827	2.7%
A. Museums (C+E)	730,209	811,036	11.1%
Acropolis Museum ⁽²⁾	212,134	231,593	9.2%
National Archaeological	64,469	69,886	8.4%
Ancient Olympia ⁽³⁾	36,791	45,097	22.6%
Palace of the Grand Master (Rhodes) ⁽²⁾	41,797	35,250	-15.7%
Heraklion Archaeological (Crete)	38,715	44,359	14.6%
White Tower	18,335	19,978	9.0%
Delphi ⁽³⁾	67,552	56,814	-15.9%
Other museums	250,416	308,059	23.0%
B. Archaeological Sites (D+F)	1,717,126	1,701,791	-0.9%
Epidavros	64,209	66,635	3.8%
The Acropolis of Mycenae & Atreus' Treasure	67,627	59,149	-12.5%
The Acropolis of Athens	541,947	554,309	2.3%
Sounio	48,557	43,926	-9.5%
The Acropolis of Lindos	87,272	72,698	-16.7%
Royal Tombs of Vergina	32,103	27,335	-14.9%
Ancient Olympia ⁽¹⁾⁽³⁾	32,414	32,117	-0.9%
Knossos (Crete)	119,601	113,508	-5.1%
Phaistos (Crete)	9,918	9,778	-1.4%
Ancient Korinthos	35,706	40,788	14.2%
Mystras	20,105	17,254	-14.2%
Delphi ⁽³⁾	27,156	23,855	-12.2%
Other archaeological sites	630,511	640,439	1.6%
II. VISITORS WHO PAID TICKET			
	2024	2025	Change 2025/2024
Total number of visitors who paid ticket (C+D)	1,837,365	1,771,215	-3.6%
C. Museums ⁽²⁾	508,517	518,541	2.0%
D. Archaeological sites	1,328,848	1,252,674	-5.7%
III. VISITORS WITH FREE ADMISSION TICKETS			
	2024	2025	Change 2025/2024
Total number of visitors with free admission ticket (E+F)	609,970	741,612	21.6%
E. Museums ⁽²⁾	221,692	292,495	31.9%
F. Archaeological sites	388,278	449,117	15.7%
IV. RECEIPTS (euros)			
	2024	2025	Change 2025/2024
Total Receipts (G+H)⁽⁴⁾	22,582,200	32,853,770	45.5%
G. Museums ⁽²⁾	5,168,783	7,370,503	42.6%
H. Archaeological sites	17,413,417	25,483,267	46.3%

⁽¹⁾ Flat rate ticket, valid both for the museum and the archaeological site.

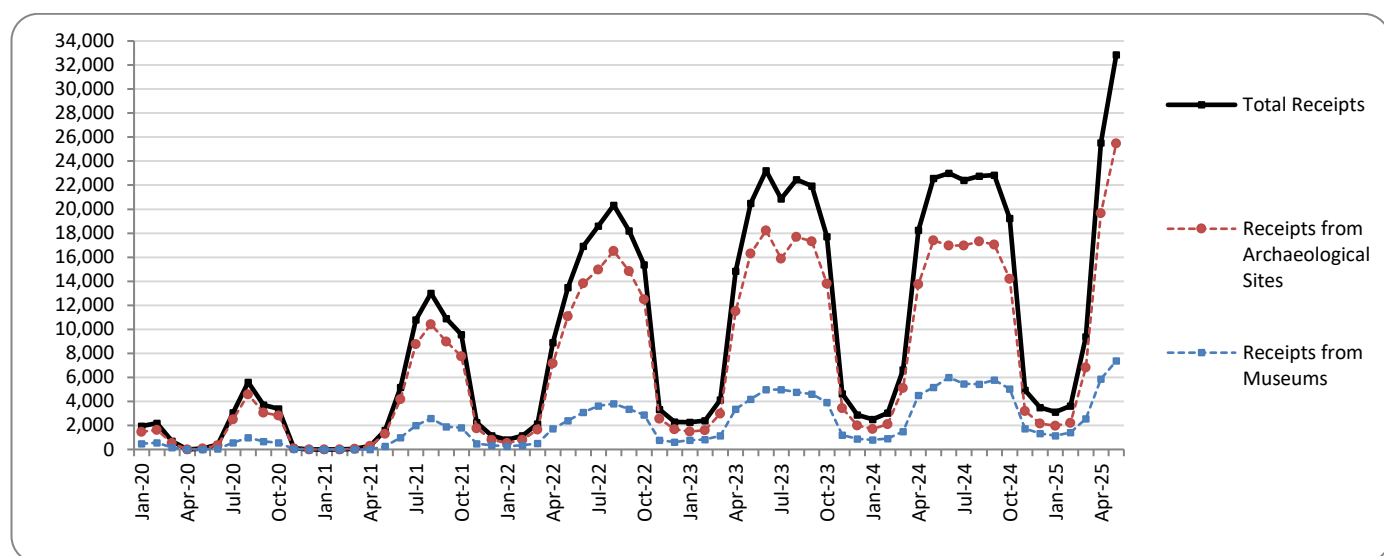
⁽²⁾ Revised data, due to the transmission of updated data from administrative sources.

⁽³⁾ Since April 2024, it has been possible to purchase tickets online from the museums of Ancient Olympia and Delphi, with the possibility of visiting the corresponding archaeological site, without it being possible to distinguish between museum and archaeological site visits.

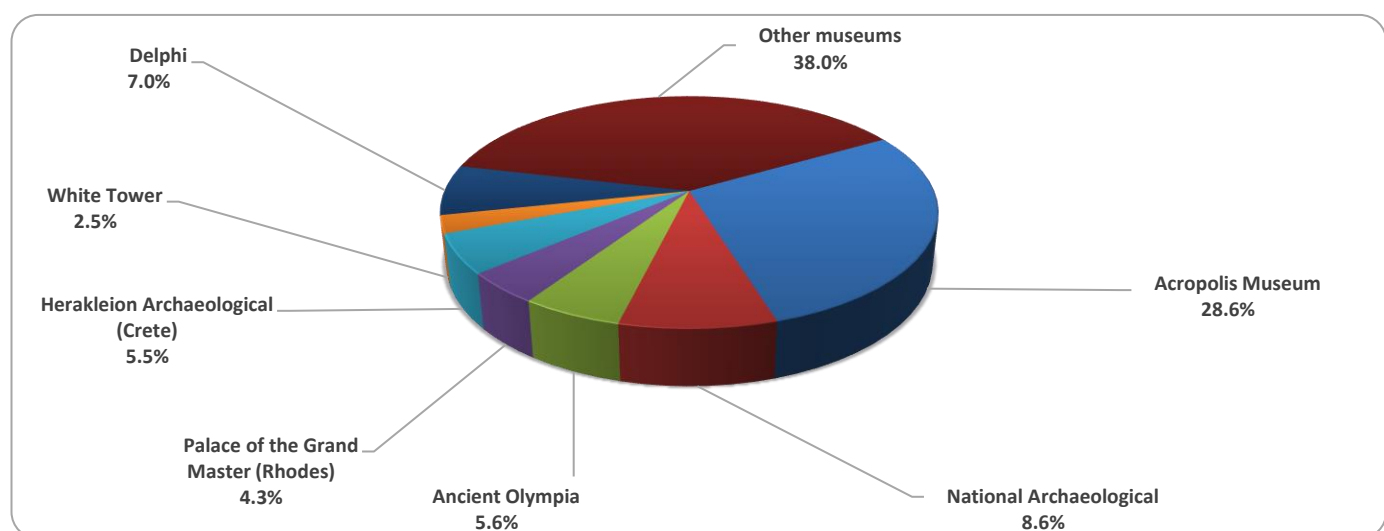
⁽⁴⁾ Pursuant to the provisions of Joint Ministerial Decision 117624 (Official Journal 1968/issue B/29-03-24), as of 01/04/2025 a new pricing policy to visits to museums and archaeological sites, is in force.

The following graphs depict the evolution of the receipts of Museums and Archaeological Sites (Graph 2), as well as the number of visitors by Museum (Graph 3) and by Archaeological Site (Graph 4).

Graph 2: Receipts from Museums and Archaeological Sites (January 2020 – May 2025)
(in thousand euro)



Graph 3: Percentage distribution of visitors by Museum, May 2025



Graph 4: Percentage distribution of visitors by Archaeological site, May 2025

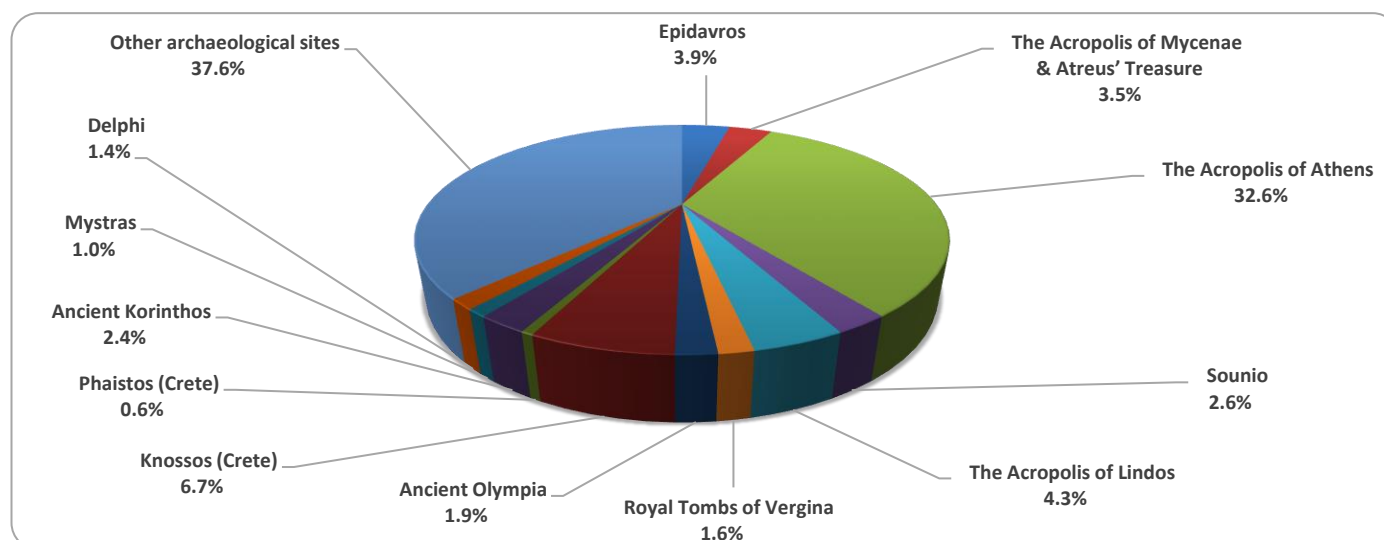


TABLE 2: VISITORS OF MUSEUMS AND ARCHAEOLOGICAL SITES - TOTAL RECEIPTS
(2023, 2024, JANUARY - MAY 2024, 2025)

I. VISITORS					
Museums and Archaeological sites	2023	2024	JANUARY- MAY		change 2025/2024
			2024	2025	
Total number of visitors (A+B)	19,210,752	20,661,857	7,317,951	7,226,266	-1.3%
A. Museums (C+E)	5,801,812	6,651,911	2,444,937	2,477,283	1.3%
Acropolis Museum ⁽²⁾	1,900,950	1,994,279	762,895	741,991	-2.7%
National Archaeological	642,318	642,956	259,248	257,961	-0.5%
Ancient Olympia ⁽³⁾	85,410	286,519	92,886	109,038	17.4%
Palace of the Grand Master (Rhodes) ⁽²⁾	342,607	370,138	86,709	74,227	-14.4%
Herakleion Archaeological (Crete)	294,839	379,363	94,904	97,412	2.6%
White Tower	259,775	239,767	81,283	73,980	-9.0%
Delphi ⁽³⁾	203,445	445,188	193,804	225,175	16.2%
Other museums	2,072,468	2,293,701	873,208	897,399	2.8%
B. Archaeological Sites (D+F)	13,408,940	14,009,946	4,873,014	4,748,983	-2.5%
Epidavros ⁽¹⁾	525,982	548,971	228,222	242,354	6.2%
The Acropolis of Mycenae & Atreus' Treasure	510,507	547,361	249,165	230,942	-7.3%
The Acropolis of Athens	3,958,405	4,557,693	1,747,427	1,806,721	3.4%
Sounio	393,927	421,556	170,763	147,470	-13.6%
The Acropolis of Lindos	629,089	702,363	142,839	123,512	-13.5%
Royal Tombs of Vergina	202,122	244,013	127,521	87,461	-31.4%
Ancient Olympia ⁽³⁾	481,211	301,987	105,950	85,185	-19.6%
Knossos (Crete)	959,110	1,010,006	242,433	231,314	-4.6%
Phaistos (Crete)	79,934	84,637	20,608	18,185	-11.8%
Ancient Korinthos ⁽¹⁾	210,465	253,085	97,198	103,138	6.1%
Mystras ⁽¹⁾	151,508	153,789	60,621	58,422	-3.6%
Delphi ⁽³⁾	482,293	292,619	144,309	86,392	-40.1%
Other archaeological sites	4,824,387	4,891,866	1,535,958	1,527,887	-0.5%
II. VISITORS WHO PAID TICKET					
	2023	2024	JANUARY- MAY		change 2025/2024
			2024	2025	
Total number of visitors who paid ticket (C+D)	13,614,885	14,869,892	4,707,748	4,615,744	-2.0%
C. Museums ⁽²⁾	3,690,912	4,489,241	1,453,320	1,428,401	-1.8%
D. Archaeological sites	9,923,973	10,380,651	3,254,428	3,187,343	-2.1%
III. VISITORS WITH FREE ADMISSION TICKETS					
	2023	2024	JANUARY- MAY		change 2025/2024
			2024	2025	
Total number of visitors with free admission ticket (E+F)	5,595,867	5,791,965	2,610,203	2,610,522	0.0%
E. Museums	2,110,900	2,162,670	991,617	1,428,401	5.8%
F. Archaeological sites	3,484,967	3,629,295	1,618,586	1,561,640	-3.5%
IV. RECEIPTS (euros)					
	2023	2024	JANUARY- MAY		change 2025/2024
			2024	2025	
Total Receipts (G+H) ⁽⁴⁾	157,947,917	171,680,632	52,998,713	74,512,419	40.6%
G. Museums ⁽²⁾	35,712,861	43,688,040	12,896,510	18,359,728	42.4%
H. Archaeological sites	122,235,056	127,992,592	40,102,203	56,152,691	40.0%

⁽¹⁾ Until March 2025, a single ticket is valid for both the museum and the archaeological site.

⁽²⁾ Revised data, due to the transmission of updated data from administrative sources.

⁽³⁾ Since April 2024, it has been possible to purchase tickets online from the museums of Ancient Olympia and Delphi, with the possibility of visiting the corresponding archaeological site, without it being possible to distinguish between museum and archaeological site visits

⁽⁴⁾ Pursuant to the provisions of Joint Ministerial Decision 117624 (Official Journal 1968/issue B/29-03-24), as of 01/04/2025 a new pricing policy to visits to museums and archaeological sites, is in force.

EXPLANATORY NOTES

Survey on Museums and Archaeological Sites Attendance	<p>The Survey on Museums and Archaeological Sites Attendance has been producing results since 1970. The survey collects data from the Hellenic Organization of Cultural Resources Development (HOCRED), supervised by the Ministry of Culture, on the number of visitors and the receipts from the tickets sold in the Museums and Archaeological sites of the country.</p> <p>The corresponding data for the Acropolis Museum is available from December 2009 onwards.</p> <p>Pursuant to the provisions of Joint Ministerial Decision 117624 (Official Journal 1968/issue B/29-03-24), as 01/04/2025 a new pricing policy shall apply to visits to museums and archaeological sites.</p>
Legal Framework	<p>The survey is conducted since 1970 on a regular basis and it produces results on a monthly and yearly basis, in compliance with the Joint Ministerial Decision 15189/B379/73.</p>
Reference Period	<p>01/05/2025 - 31/05/2025</p>
Methodology and Definitions	<p>The survey is conducted on a monthly basis from data mainly collected from the Hellenic Organization of Cultural Resources Development (HOCRED), supervised by the Ministry of Culture, on the number of visitors and the receipts from the tickets sold in the Museums and Archaeological sites of the Country. ELSTAT tabulates and presents the data for the whole of the Country, by month and by year.</p> <p>Since April 2025, pursuant to the provisions of Ministerial Decision 117624 (Official Journal 1968/issue B/29-03-24), the flat rate ticket for museums and archaeological sites applies only for Ancient Olympia and Nemea.</p>
References	<p>More information on the Survey on Museums and Archaeological Sites Attendance and detailed time series are available on: http://www.statistics.gr/en/statistics/-/publication/SCI21/-</p>