



INDUSTRIAL PRODUCTION INDEX: November 2024, y-o-y increase of 4.9%

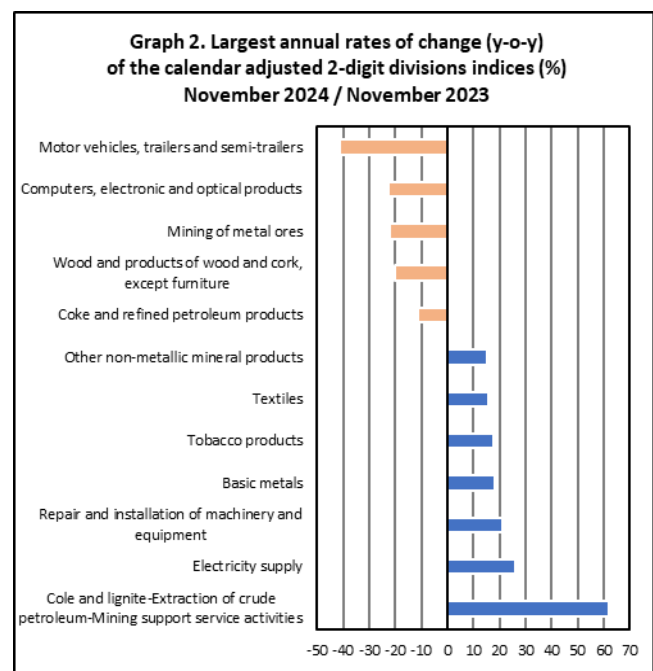
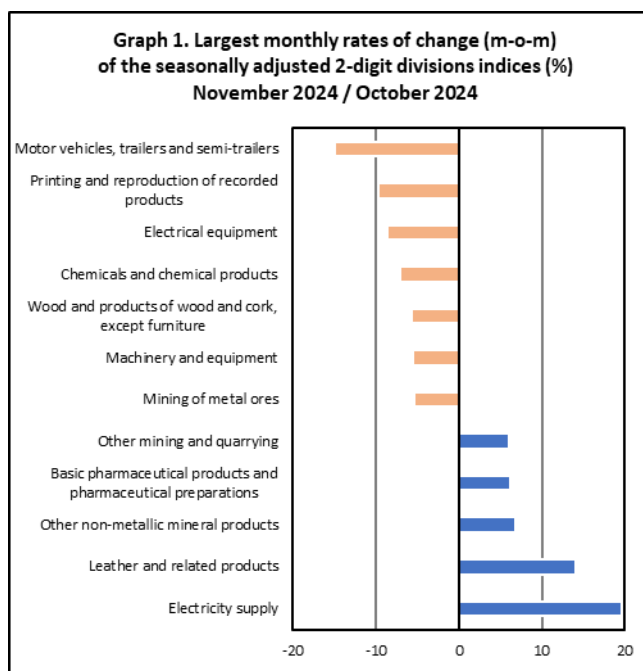
The Hellenic Statistical Authority announces the Industrial Production Index (IPI) with base year 2015=100.0 for November 2024, the evolution of which, on the basis of provisional and working day adjusted data, is as follows:

The Overall Industrial Production Index in November 2024 recorded an increase of 4.9% compared with November 2023. The Overall IPI in November 2023 increased by 3.3% compared with the corresponding index in November 2022 (Table 1).

The average Overall Industrial Production Index for the period from January to November 2024 recorded an increase of 5.3% compared with the average IPI of the period from January to November 2023 (Table 2).

The seasonally adjusted Overall Industrial Production Index in November 2024 recorded an increase of 2.8% compared with the corresponding index of October 2024 (Table 4).

The index of electricity supply division showed the greatest percentage increase, whereas the index of motor vehicles, trailers and semi-trailers division recorded the greatest percentage decrease in November 2024 compared with October 2024. Comparing the indices of November 2024 with the corresponding indices of November 2023, the greatest percentage increase was recorded in mining of coal and lignite – extraction of crude petroleum and natural gas – mining support service activities divisions division, while the highest percentage decrease was recorded in motor vehicles, trailers and semi-trailers (Tables 1 and 4).



Information on methodological issues:

Business Statistics Division
Manufacture-Construction Indices and Industrial Products Section
Polychroniadou Maria
Tel: +30 213 135 2389
E-mail: m.polychroniadou@statistics.gr

Information on data provision:

Tel: +30 213 135 2023, 2308, 2310
E-mail: data.dissem@statistics.gr

Evolution of the Industrial Production Index in November 2024

I. Annual changes: November 2024 / November 2023 (Table 1)

The 4.9% increase of the working day adjusted Overall IPI in November 2024, compared with the corresponding index in November 2023, is due to the annual changes of the sub-indices in the following industrial sections:

Increase of:

- 26.1% in the Electricity Supply Index.
- 5.5% in the Water Supply Index.
- 0.5% in the Manufacturing Index. The increase was mainly the result of the annual changes of the sub-indices in the following 2-digit divisions: repair and installation of machinery and equipment, basic metals, tobacco products, textiles, other non-metallic mineral products.

Decrease of:

- 6.7% in the Mining and Quarrying Index. The decrease was the result of the annual changes of the sub-indices in the following 2-digit divisions: mining of metal ores, other mining and quarrying.

II. Rates of change of the average index of the period January - November 2024 compared with the corresponding index of the period January - November 2023 (Table 2)

The 5.3% increase of the working day adjusted average Overall IPI in the 11-month period January - November 2024, compared with the corresponding index in January - November 2023, is due to the corresponding rates of change of the sub-indices in the following industrial sections:

Increase of:

- 11.7% in the Electricity Supply Index.
- 4.5% in the Water Supply Index.
- 4.0% in the Manufacturing Index.

Decrease of:

- 1.3% in the Mining and Quarrying Index

III. Monthly changes: November 2024 / October 2024 (Table 4)

The 2.8% increase of the seasonally adjusted Overall IPI in November 2024, compared with the corresponding index in October 2024 is due to the monthly changes of the sub-indices in the following industrial sections:

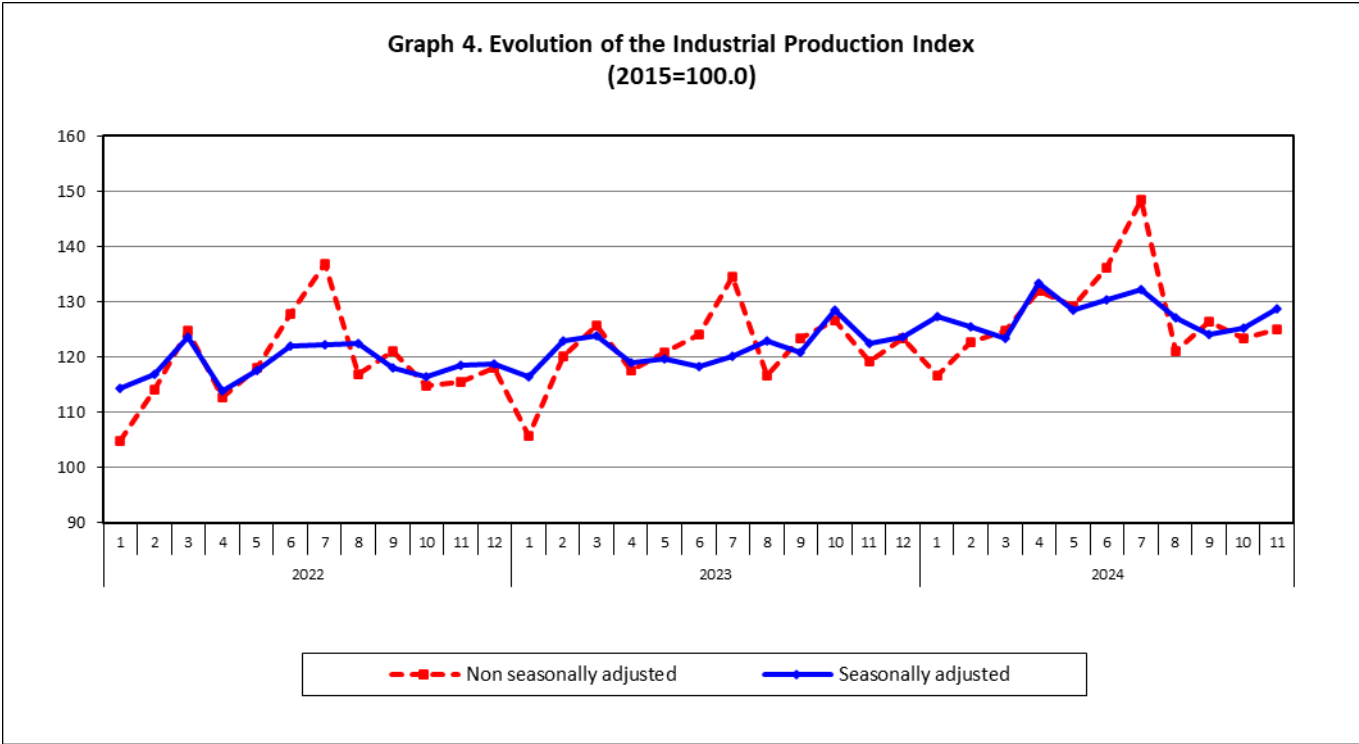
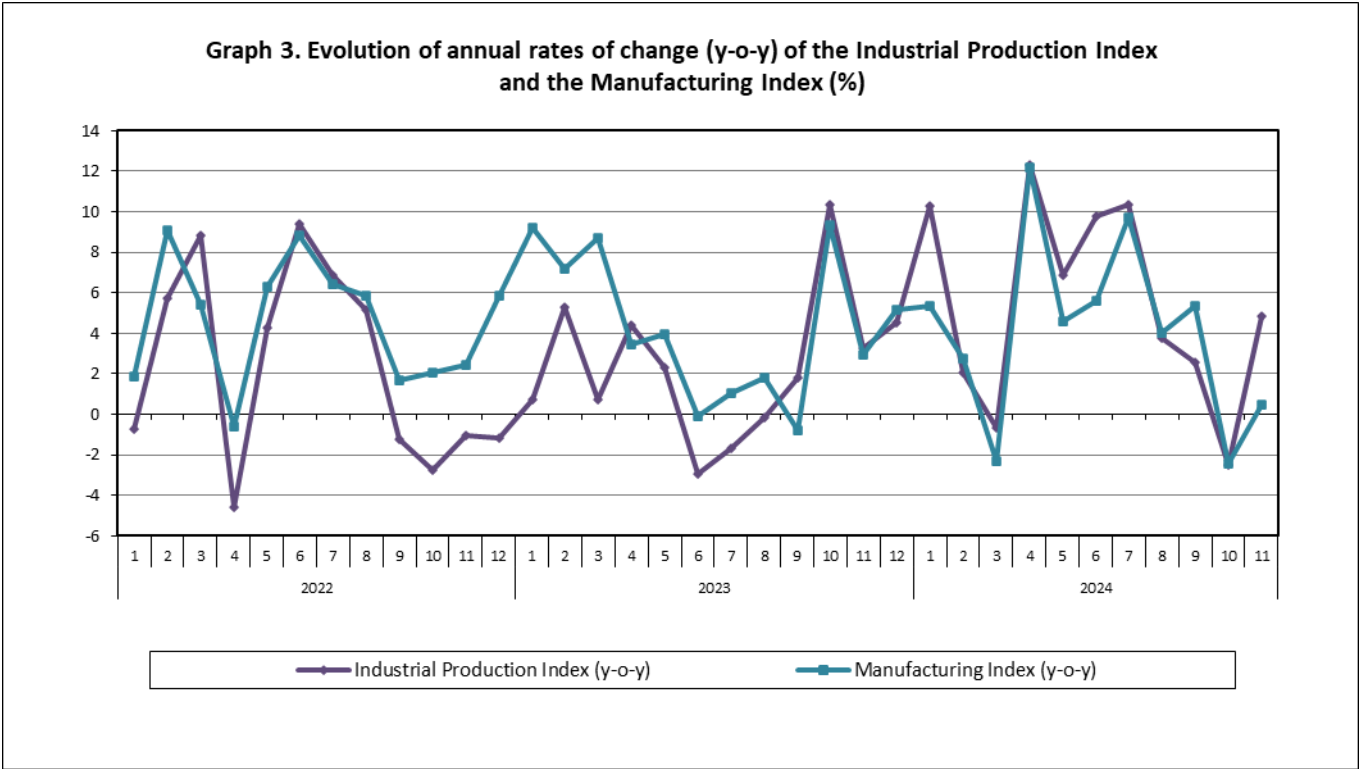
Increase of:

- 19.6% in the Electricity Supply Index.
- 2.7% in the Mining and Quarrying Index.
- 2.5% in the Water Supply Index.

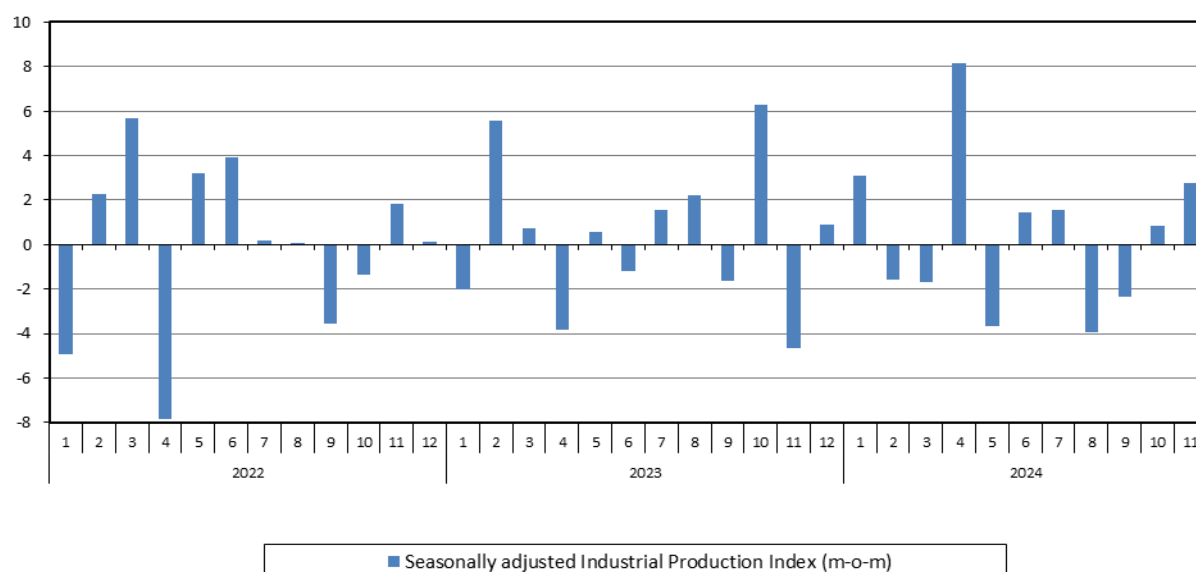
Decrease of:

- 0.7% in the Manufacturing Index.

The following graphs depict the annual rates of change (y-o-y) of the Industrial Production Index and the Manufacturing Index, the evolution of the seasonally and non-seasonally adjusted Overall Industrial Production Index, as well as the monthly rates of change (m-o-m) of the seasonally adjusted index.



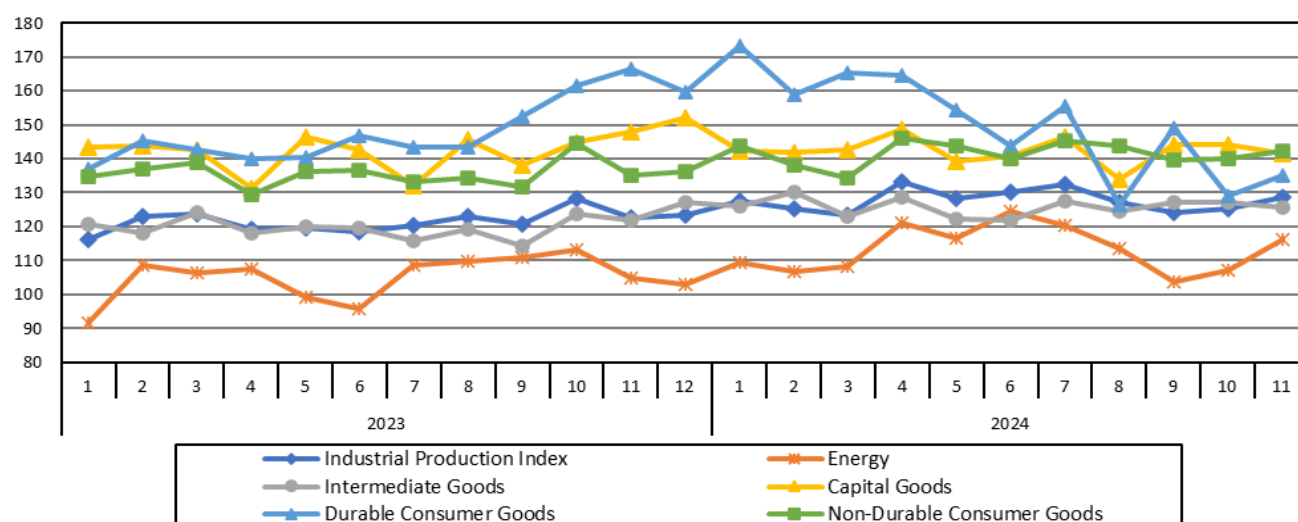
Graph 5. Evolution of the monthly rates of change (m-o-m) of the seasonally adjusted Industrial Production Index (%)



It should be noted that the time series with the seasonally adjusted indices is recalculated every time a new observation is added in the time series. Therefore, the seasonally adjusted data differ from the data published in the previous Announcement.

The following graphs depict the evolution of the seasonally adjusted Industrial Production Index and the Main Industrial Groupings, as well as the evolution of the Industrial Production Index and the Industrial Sections Indices.

Graph 6. Evolution of the seasonally adjusted Industrial Production Index and the Main Industrial Groupings Indices, January 2023 - November 2024 (2015=100.0)



**Graph 7. Evolution of the Industrial Production Index and the Industrial Section Indices
(2015=100.0)**

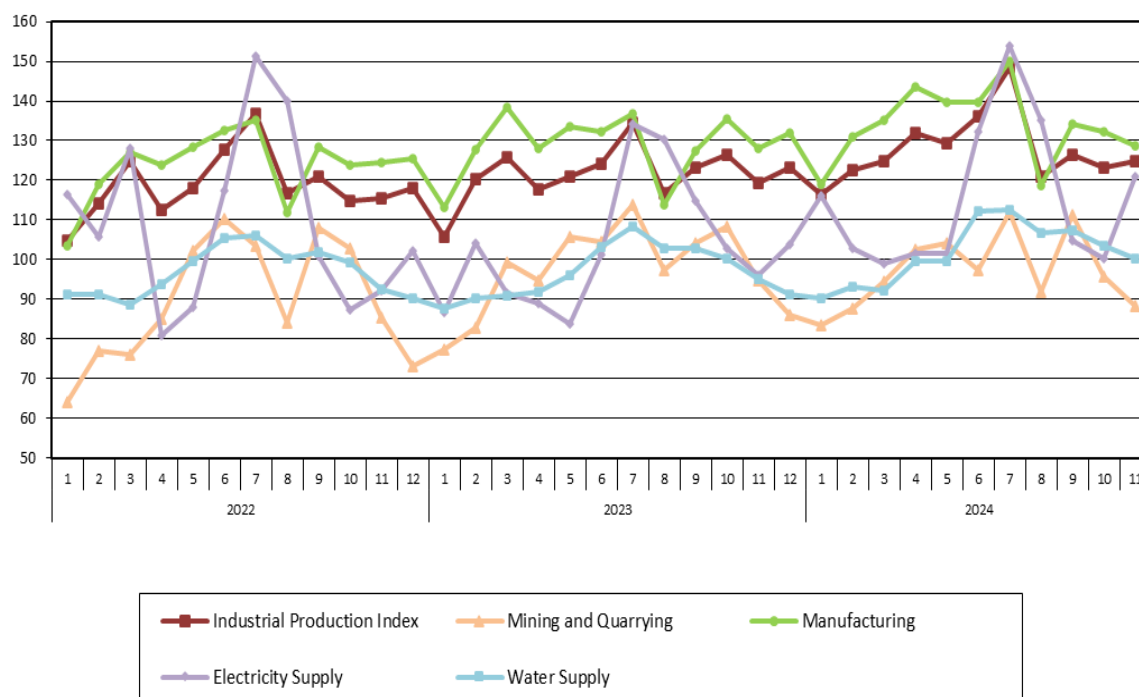


Table 1. Annual rates of change of the Industrial Production Index
(Working day adjusted data, according to the real number of working days)
Base year: 2015=100.0

Code		Division	November			Rate of change (%)	
			2024*	2023	2022	2024/2023	2023/2022
OVERALL INDEX			124.97	119.19	115.41	4.9	3.3
B	MINING AND QUARRYING		88.46	94.85	85.40	-6.7	11.1
05-06-09	Mining of coal and lignite – Extraction of crude petroleum and natural gas – Mining support service activities		40.06	24.72	19.78	62.0	25.0
07	Mining of metal ores		114.47	147.02	110.34	-22.1	33.2
08	Other mining and quarrying		86.62	87.21	86.47	-0.7	0.9
C	MANUFACTURING		128.62	128.03	124.36	0.5	2.9
10	Food		112.33	105.97	104.46	6.0	1.4
11	Beverages		70.38	73.48	74.66	-4.2	-1.6
12	Tobacco products		161.07	136.66	116.99	17.9	16.8
13	Textiles		115.02	99.30	111.30	15.8	-10.8
14	Wearing apparel		66.34	67.12	78.22	-1.2	-14.2
15	Leather and related products		69.58	74.40	74.09	-6.5	0.4
16	Wood and products of wood and cork, except furniture		88.23	110.42	105.30	-20.1	4.9
17	Paper and paper products		115.01	117.18	113.06	-1.9	3.6
18	Printing and reproduction of recorded products		146.72	145.07	146.16	1.1	-0.7
19	Coke and refined petroleum products		102.76	115.61	112.39	-11.1	2.9
20	Chemicals and chemical products		112.35	120.77	127.54	-7.0	-5.3
21	Basic pharmaceutical products and pharmaceutical preparations		287.57	274.78	268.39	4.7	2.4
22	Rubber and plastic products		122.92	123.80	114.44	-0.7	8.2
23	Other non-metallic mineral products		154.70	133.98	126.90	15.5	5.6
24	Basic metals		149.92	126.93	135.86	18.1	-6.6
25	Fabricated metal products, except machinery and equipment		144.43	153.31	135.36	-5.8	13.3
26	Computers, electronic and optical products		233.93	302.45	245.91	-22.7	23.0
27	Electrical equipment		145.67	158.14	131.24	-7.9	20.5
28	Machinery and equipment n. e. c.		122.96	132.03	134.30	-6.9	-1.7
29	Motor vehicles, trailers and semi-trailers		156.64	267.77	142.28	-41.5	88.2
30	Other transport equipment		69.70	72.95	95.69	-4.5	-23.8
31	Furniture		139.93	147.42	158.55	-5.1	-7.0
32	Other manufacturing		136.84	131.78	135.61	3.8	-2.8
33	Repair and installation of machinery and equipment		130.39	107.39	110.36	21.4	-2.7
D	ELECTRICITY SUPPLY		120.92	95.93	92.23	26.1	4.0
35	Electricity supply		120.92	95.93	92.23	26.1	4.0
E	WATER SUPPLY		100.32	95.06	92.51	5.5	2.8
36	Water collection, treatment and supply		100.32	95.06	92.51	5.5	2.8
MAIN INDUSTRIAL GROUPINGS							
1	Energy		113.01	101.92	98.48	10.9	3.5
2	Intermediate goods		125.70	122.05	117.93	3.0	3.5
3	Capital goods		149.43	156.70	143.47	-4.6	9.2
4	Consumer Durables		140.60	174.14	149.78	-19.3	16.3
5	Consumer Non-Durables		131.62	125.16	124.79	5.2	0.3

* Provisional data

Note: The indices are rounded up to two decimal digits when published and percentage changes up to one decimal digit when published.

Table 2. Average indices of the period January – November and rates of change of the Industrial Production Index
(Working day adjusted data, according to the real number of working days)

Base year: 2015=100.0

Code		Division	Average indices of the period Jan.-Nov.			Rate of change (%)	
			2024*	2023	2022	2024/2023	2023/2022
OVERALL INDEX			127.79	121.35	118.84	5.3	2.1
B	MINING AND QUARRYING		97.17	98.42	90.80	-1.3	8.4
05-06-09	Mining of coal and lignite – Extraction of crude petroleum and natural gas – Mining support service activities		20.05	24.52	21.75	-18.2	12.7
07	Mining of metal ores		122.66	127.76	119.72	-4.0	6.7
08	Other mining and quarrying		99.73	99.18	91.00	0.5	9.0
C	MANUFACTURING		133.80	128.66	123.49	4.0	4.2
10	Food		123.88	116.91	112.09	6.0	4.3
11	Beverages		112.45	105.96	106.50	6.1	-0.5
12	Tobacco products		160.02	140.77	118.37	13.7	18.9
13	Textiles		109.86	108.76	112.32	1.0	-3.2
14	Wearing apparel		65.72	72.19	81.28	-9.0	-11.2
15	Leather and related products		89.90	96.52	83.12	-6.9	16.1
16	Wood and products of wood and cork, except furniture		99.81	107.99	109.73	-7.6	-1.6
17	Paper and paper products		115.00	114.19	118.15	0.7	-3.4
18	Printing and reproduction of recorded products		139.70	128.04	135.29	9.1	-5.4
19	Coke and refined petroleum products		113.63	111.04	106.24	2.3	4.5
20	Chemicals and chemical products		134.67	126.67	126.93	6.3	-0.2
21	Basic pharmaceutical products and pharmaceutical preparations		277.46	279.20	228.75	-0.6	22.1
22	Rubber and plastic products		128.15	124.93	126.84	2.6	-1.5
23	Other non-metallic mineral products		143.66	129.37	123.55	11.0	4.7
24	Basic metals		136.34	128.08	129.92	6.4	-1.4
25	Fabricated metal products, except machinery and equipment		141.52	137.66	135.99	2.8	1.2
26	Computers, electronic and optical products		238.40	234.51	219.54	1.7	6.8
27	Electrical equipment		146.44	139.66	139.53	4.9	0.1
28	Machinery and equipment n. e. c.		123.30	123.16	122.06	0.1	0.9
29	Motor vehicles, trailers and semi-trailers		140.66	172.77	150.96	-18.6	14.4
30	Other transport equipment		68.04	68.40	73.64	-0.5	-7.1
31	Furniture		143.90	148.84	146.74	-3.3	1.4
32	Other manufacturing		136.61	137.51	129.44	-0.7	6.2
33	Repair and installation of machinery and equipment		106.26	94.26	94.68	12.7	-0.4
D	ELECTRICITY SUPPLY		115.26	103.15	109.89	11.7	-6.1
35	Electricity supply		115.26	103.15	109.89	11.7	-6.1
E	WATER SUPPLY		101.64	97.24	97.27	4.5	0.0
36	Water collection, treatment and supply		101.64	97.24	97.27	4.5	0.0
MAIN INDUSTRIAL GROUPINGS							
1	Energy		113.15	104.89	107.27	7.9	-2.2
2	Intermediate goods		126.89	120.67	120.75	5.2	-0.1
3	Capital goods		136.62	135.79	129.60	0.6	4.8
4	Consumer Durables		148.73	145.25	135.30	2.4	7.4
5	Consumer Non-Durables		142.77	136.75	127.66	4.4	7.1

* Provisional data

Note: The indices are rounded up to two decimal digits when published and percentage changes up to one decimal digit when published.

Table 3. Monthly rate of change of the Industrial Production Index
(Working day adjusted data, according to the real number of working days)

Base year: 2015=100.0

Code	Division	November 2024*	October 2024**	Rate of change (%) Nov. 2024/Oct. 2024
OVERALL INDEX		124.97	123.37	1.3
B	MINING AND QUARRYING	88.46	95.65	-7.5
05-06-09	Mining of coal and lignite – Extraction of crude petroleum and natural gas – Mining support service activities	40.06	34.22	17.04
07	Mining of metal ores	114.47	120.49	-5.0
08	Other mining and quarrying	86.62	96.14	-9.9
C	MANUFACTURING	128.62	132.10	-2.6
10	Food	112.33	114.61	-2.0
11	Beverages	70.38	91.31	-22.9
12	Tobacco products	161.07	159.32	1.1
13	Textiles	115.02	119.46	-3.7
14	Wearing apparel	66.34	69.93	-5.1
15	Leather and related products	69.58	75.89	-8.3
16	Wood and products of wood and cork, except furniture	88.23	92.63	-4.7
17	Paper and paper products	115.01	119.91	-4.1
18	Printing and reproduction of recorded products	146.72	155.15	-5.4
19	Coke and refined petroleum products	102.76	103.40	-0.6
20	Chemicals and chemical products	112.35	129.00	-12.9
21	Basic pharmaceutical products and pharmaceutical preparations	287.57	286.61	0.3
22	Rubber and plastic products	122.92	133.88	-8.2
23	Other non-metallic mineral products	154.70	150.93	2.5
24	Basic metals	149.92	147.91	1.4
25	Fabricated metal products, except machinery and equipment	144.43	146.51	-1.4
26	Computers, electronic and optical products	233.93	216.41	8.1
27	Electrical equipment	145.67	163.89	-11.1
28	Machinery and equipment n. e. c.	122.96	127.17	-3.3
29	Motor vehicles, trailers and semi-trailers	156.64	153.92	1.8
30	Other transport equipment	69.70	63.47	9.8
31	Furniture	139.93	137.16	2.0
32	Other manufacturing	136.84	152.81	-10.4
33	Repair and installation of machinery and equipment	130.39	126.69	2.9
D	ELECTRICITY SUPPLY	120.92	100.15	20.7
35	Electricity supply	120.92	100.15	20.7
E	WATER SUPPLY	100.32	103.42	-3.0
36	Water collection, treatment and supply	100.32	103.42	-3.0
MAIN INDUSTRIAL GROUPINGS				
1	Energy	113.01	101.40	11.4
2	Intermediate goods	125.70	131.66	-4.5
3	Capital goods	149.43	148.47	0.6
4	Consumer Durables	140.60	128.16	9.7
5	Consumer Non-Durables	131.62	136.60	-3.6

* Provisional data **Revised data

Note: The indices are rounded up to two decimal digits when published and percentage changes up to one decimal digit when published.

Table 4. Monthly rate of change of the seasonally adjusted Industrial Production Index

Base year: 2015=100.0

Code	Division	November 2024	October 2024	Rate of change (%) Nov. 2024 /Oct. 2024
	OVERALL INDEX	128.60	125.14	2.8
B	MINING AND QUARRYING	90.26	87.86	2.7
05-06-09	Mining of coal and lignite – Extraction of crude petroleum and natural gas – Mining support service activities	-	-	-
07	Mining of metal ores	107.54	113.58	-5.3
08	Other mining and quarrying	90.86	85.66	6.1
C	MANUFACTURING	131.79	132.79	-0.7
10	Food	123.92	122.11	1.5
11	Beverages	102.70	105.50	-2.7
12	Tobacco products	165.38	158.40	4.4
13	Textiles	115.70	112.53	2.8
14	Wearing apparel	65.26	64.63	1.0
15	Leather and related products	86.06	75.49	14.0
16	Wood and products of wood and cork, except furniture	91.08	96.58	-5.7
17	Paper and paper products	114.61	116.16	-1.3
18	Printing and reproduction of recorded products	137.71	152.38	-9.6
19	Coke and refined petroleum products	102.14	106.01	-3.7
20	Chemicals and chemical products	119.94	128.93	-7.0
21	Basic pharmaceutical products and pharmaceutical preparations	282.24	265.89	6.2
22	Rubber and plastic products	126.65	130.04	-2.6
23	Other non-metallic mineral products	150.35	140.71	6.8
24	Basic metals	145.51	144.34	0.8
25	Fabricated metal products, except machinery and equipment	141.63	142.82	-0.8
26	Computers, electronic and optical products	221.11	223.94	-1.3
27	Electrical equipment	145.36	158.96	-8.6
28	Machinery and equipment n. e. c.	120.69	127.73	-5.5
29	Motor vehicles, trailers and semi-trailers	132.44	155.61	-14.9
30	Other transport equipment	63.09	65.78	-4.1
31	Furniture	139.97	138.13	1.3
32	Other manufacturing	141.87	143.99	-1.5
33	Repair and installation of machinery and equipment	124.82	127.08	-1.8
D	ELECTRICITY SUPPLY	129.09	107.96	19.6
35	Electricity supply	129.09	107.96	19.6
E	WATER SUPPLY	104.19	101.63	2.5
36	Water collection, treatment and supply	104.19	101.63	2.5
	MAIN INDUSTRIAL GROUPINGS			
1	Energy	115.98	107.09	8.3
2	Intermediate goods	125.72	127.28	-1.2
3	Capital goods	141.38	143.98	-1.8
4	Consumer Durables	135.08	129.02	4.7
5	Consumer Non-Durables	142.39	140.10	1.6

Notes:

1. The indices are rounded up to two decimal digits when published and percentage changes up to one decimal digit when published.
2. The whole time-series with seasonally adjusted indices is recalculated every time a new observation is added in the time-series.
3. The composed index of divisions 05-06-09 is not seasonally adjusted.

Table 5. Evolution of the Overall Industrial Production Index
(Working day adjusted data, according to the real number of working days)

Base year: 2015=100.0

Year and month	Overall Index	Monthly rate of change (%)	Annual rate of change (%)	12-month average index (moving average)	Rate of change of the 12-month average index (%)
2022:					
1	104.88	-12.1	-0.7	115.94	9.7
2	114.17	8.9	5.8	116.46	9.9
3	124.73	9.2	8.8	117.30	10.1
4	112.63	-9.7	-4.6	116.85	7.9
5	118.11	4.9	4.3	117.25	7.1
6	127.84	8.2	9.4	118.17	7.1
7	136.86	7.1	6.9	118.90	7.0
8	116.79	-14.7	5.1	119.38	6.6
9	121.10	3.7	-1.2	119.25	5.6
10	114.71	-5.3	-2.8	118.98	4.0
11	115.41	0.6	-1.0	118.88	3.3
12	117.96	2.2	-1.2	118.77	2.4
Annual average	118.77				
2023:					
1	105.63	-10.5	0.7	118.83	2.5
2	120.18	13.8	5.3	119.33	2.5
3	125.66	4.6	0.7	119.41	1.8
4	117.60	-6.4	4.4	119.82	2.5
5	120.86	2.8	2.3	120.05	2.4
6	124.05	2.6	-3.0	119.73	1.3
7	134.56	8.5	-1.7	119.54	0.5
8	116.61	-13.3	-0.2	119.53	0.1
9	123.27	5.7	1.8	119.71	0.4
10	126.57	2.7	10.3	120.70	1.4
11	119.19	-5.8	3.3	121.01	1.8
12	123.30	3.4	4.5	121.46	2.3
Annual average	121.46				
2024*:					
1	116.52	-5.5	10.3	122.36	3.0
2	122.64	5.3	2.0	122.57	2.7
3	124.86	1.8	-0.6	122.50	2.6
4	132.08	5.8	12.3	123.71	3.2
5	129.19	-2.2	6.9	124.40	3.6
6	136.16	5.4	9.8	125.41	4.7
7	148.47	9.0	10.3	126.57	5.9
8	121.00	-18.5	3.8	126.94	6.2
9	126.40	4.5	2.5	127.20	6.3
10	123.37	-2.4	-2.5	126.93	5.2
11	124.97	1.3	4.9	127.41	5.3

* Provisional data

Note: The indices are rounded up to two decimal digits when published and percentage changes up to one decimal digit when published.

Table 6. Monthly evolution of the seasonally adjusted Overall Industrial Production Index and Main Industrial Groupings

Base year: 2015=100.0

Year and month		Overall Index		Energy		Intermediate goods		Capital goods		Consumer durables		Consumer non-durables	
		Index	Monthly rate of change (%)	Index	Monthly rate of change (%)	Index	Monthly rate of change (%)	Index	Monthly rate of change (%)	Index	Monthly rate of change (%)	Index	Monthly rate of change (%)
2022:	1	114.25	-4.9	106.60	-6.3	118.69	-3.9	118.65	-8.0	118.96	0.3	118.65	-3.5
	2	116.87	2.3	102.63	-3.7	122.69	3.4	129.80	9.4	125.59	5.6	125.70	5.9
	3	123.49	5.7	120.88	17.8	119.31	-2.8	129.68	-0.1	137.12	9.2	127.55	1.5
	4	113.83	-7.8	99.11	-18.0	118.14	-1.0	129.37	-0.2	134.19	-2.1	123.14	-3.5
	5	117.47	3.2	104.10	5.0	120.28	1.8	135.89	5.0	132.63	-1.2	125.81	2.2
	6	122.07	3.9	112.20	7.8	121.84	1.3	139.77	2.9	137.90	4.0	128.70	2.3
	7	122.30	0.2	116.99	4.3	119.22	-2.1	141.42	1.2	131.00	-5.0	125.63	-2.4
	8	122.39	0.1	115.64	-1.2	121.27	1.7	138.57	-2.0	157.97	20.6	125.35	-0.2
	9	118.07	-3.5	100.19	-13.4	121.08	-0.2	141.46	2.1	136.07	-13.9	130.26	3.9
	10	116.46	-1.4	100.23	0.0	116.34	-3.9	137.68	-2.7	151.75	11.5	128.79	-1.1
	11	118.59	1.8	101.09	0.9	117.82	1.3	136.55	-0.8	144.33	-4.9	134.29	4.3
	12	118.73	0.1	101.38	0.3	120.40	2.2	134.41	-1.6	153.52	6.4	132.49	-1.3
Annual average		118.71		106.75		119.76		134.44		138.42		127.20	
2023:	1	116.35	-2.0	91.65	-9.6	120.55	0.1	143.25	6.6	136.78	-10.9	134.79	1.7
	2	122.85	5.6	108.67	18.6	118.20	-1.9	143.80	0.4	145.10	6.1	136.94	1.6
	3	123.78	0.8	106.32	-2.2	124.08	5.0	142.72	-0.8	142.53	-1.8	138.71	1.3
	4	119.05	-3.8	107.57	1.2	118.18	-4.8	131.44	-7.9	140.11	-1.7	129.27	-6.8
	5	119.73	0.6	99.29	-7.7	119.92	1.5	146.60	11.5	140.23	0.1	136.14	5.3
	6	118.28	-1.2	95.70	-3.6	119.73	-0.2	142.52	-2.8	146.89	4.7	136.58	0.3
	7	120.15	1.6	108.47	13.3	115.78	-3.3	132.04	-7.4	143.37	-2.4	133.34	-2.4
	8	122.81	2.2	109.88	1.3	119.28	3.0	145.63	10.3	143.31	0.0	134.13	0.6
	9	120.83	-1.6	110.97	1.0	114.17	-4.3	137.97	-5.3	152.64	6.5	131.77	-1.8
	10	128.41	6.3	113.12	1.9	123.76	8.4	144.97	5.1	161.65	5.9	144.44	9.6
	11	122.40	-4.7	104.64	-7.5	122.02	-1.4	147.94	2.0	166.48	3.0	135.20	-6.4
	12	123.53	0.9	102.97	-1.6	127.10	4.2	151.99	2.7	159.60	-4.1	136.26	0.8
Annual average		121.51		104.94		120.23		142.57		148.22		135.63	
2024:	1	127.36	3.1	109.45	6.3	125.89	-1.0	142.36	-6.3	173.43	8.7	143.86	5.6
	2	125.37	-1.6	106.84	-2.4	129.99	3.3	141.74	-0.4	158.89	-8.4	138.13	-4.0
	3	123.26	-1.7	108.21	1.3	123.13	-5.3	142.45	0.5	165.15	3.9	134.36	-2.7
	4	133.30	8.1	121.15	12.0	128.59	4.4	148.57	4.3	164.39	-0.5	146.04	8.7
	5	128.40	-3.7	116.38	-3.9	122.18	-5.0	139.04	-6.4	154.34	-6.1	143.63	-1.7
	6	130.24	1.4	124.55	7.0	121.82	-0.3	140.91	1.3	143.81	-6.8	140.16	-2.4
	7	132.24	1.5	120.41	-3.3	127.38	4.6	146.26	3.8	155.51	8.1	145.43	3.8
	8	127.07	-3.9	113.42	-5.8	124.43	-2.3	134.05	-8.3	126.25	-18.8	143.80	-1.1
	9	124.08	-2.4	103.74	-8.5	127.28	2.3	144.01	7.4	149.06	18.1	139.64	-2.9
	10	125.14	0.9	107.09	3.2	127.28	0.0	143.98	0.0	129.02	-13.4	140.10	0.3
	11	128.60	2.8	115.98	8.3	125.72	-1.2	141.38	-1.8	135.08	4.7	142.39	1.6

Notes:

1. The indices are rounded up to two decimal digits when published and percentage changes up to one decimal digit when published.
2. The whole time-series with seasonally adjusted indices is recalculated every time a new observation is added in the time-series.

METHODOLOGICAL NOTES

Generally	The Industrial Production Index (IPI) in Greece has been compiled by the Hellenic Statistical Authority (ELSTAT) from 1959 onwards.
Purpose of the index	The objective of the index is to compare the magnitude (volume) of the output in the current month in the mining and quarrying, manufacturing, electricity and water supply divisions with the corresponding output of a given fixed period, which is considered as base period. The Industrial Production Index shows the evolution of the value added of the production factors cost, at constant prices.
Legal framework	The compilation of the IPI is based on the framework of the implementation of Council Regulation (EC) No 1165/1998 concerning short-term statistics (STS-R). Furthermore, the IPI is governed by Regulation (EC) No 1893/2006 of the European Parliament and of the Council, by Commission Regulation (EC) No 656/2007, by Council Regulation (EC) No 451/2008, by Regulation (EU) No 2019/2152 of the European Parliament and of the Council on European business statistics, as well as Commission Implementing Regulation (EU) No 2020/1197 laying down technical specifications and arrangements pursuant to Regulation (EU) No 2019/2152.
Reference period	Month.
Base year	2015=100.0.
Revision	The IPI is a fixed base index. The Industrial Production Index was currently revised with new base year 2015 (2015=100.0) according to the provisions of Council Regulation No 1165/1998 concerning short-term statistics. Short-term indices are revised every five (5) years, particularly in calendar years ending in 0 or 5.
Statistical classifications	At the level of branches of economic activities, the statistical classification of economic activities NACE Rev.2 of EU was used (Regulation No 1893/2006), while at the level of main industrial groupings, the allocation of two-digit and three-digit NACE Rev. 2 headings to categories of aggregate classification was used, in accordance with Council Regulation No 656/2007. At product level, the statistical classification CPA 2008 of EU was used, according to Council Regulation No 451/2008.
Geographical coverage	The index covers the whole Country.
Coverage of economic activities	The index covers all the sections of industry, the main industrial groups, as well as all levels of economic activity.
Statistical survey	The data are collected from a sample of 1,263 enterprises. The survey covers 325 products and the measurement of the surveyed products is made in terms of output quantities or in terms of production value or turnover, according to the specific features in each branch of economic activity.
Seasonal adjustment	Seasonal adjustment is the procedure followed to remove the impact of seasonality on the time-series (i.e. the impact of monthly effects, e.g. holidays, tourist period etc.), in order to improve comparability over time. The method applied is TRAMO-SEATS with the use of JDemetra+ 2.0.0. For the seasonal adjustment of the Industrial Production Index at 2-digit level of NACE Rev.2, at section level (B – Mining and Quarrying, C – Manufacturing, D – Electricity and E – Water Supply) and for the Main Industrial Groupings (MIGs), the direct approach is applied, namely each time-series is seasonally adjusted independently. For the overall Industrial Production Index, the indirect approach is applied, with the seasonally adjusted IPI being computed by aggregating the seasonally adjusted MIGs using appropriate weights.
Publication of data	The revised IPI with the new base year 2015 (2015=100.0) is released since July 2019, with May 2019 as the first reference month. Data with base year 2015=100.0 are available from January 2000 onwards.
References	More information about the methodology concerning the compilation and calculation of the index and the time series are available on the website of the Hellenic Statistical Authority (ELSTAT) (http://www.statistics.gr/en/statistics/-/publication/DKT21/-).