



HELLENIC REPUBLIC
HELLENIC STATISTICAL AUTHORITY

Piraeus, 26 February 2021

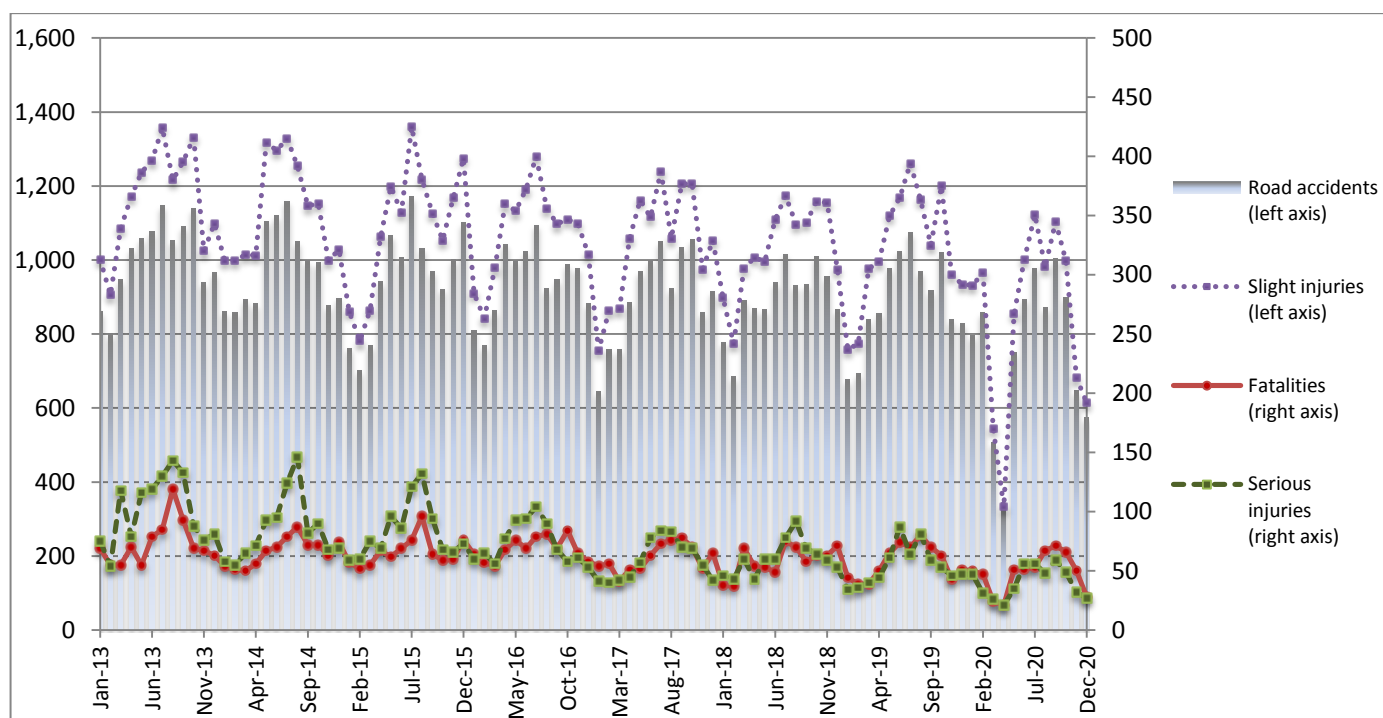
PRESS RELEASE

ROAD TRAFFIC ACCIDENTS: December 2020

The Hellenic Statistical Authority (ELSTAT) announces provisional¹ data from the survey on “Road Traffic Accidents” for December 2020. In particular, the road traffic accidents which occurred in Greece, resulting in death or injury, decreased by 30.9% in comparison with the corresponding month of 2019 (573 road accidents in December 2020, against 829 road accidents in December 2019).

The casualties of the injury-causing accidents that occurred in December 2020 were as follows: 28 deaths, 27 serious injuries and 614 slight injuries. In contrast, in December 2019 the corresponding figures were: 51 deaths, 47 serious injuries and 934 slight injuries. Therefore, road traffic accident casualties in December 2020 decreased by 45.1% for deaths, by 42.6% for serious injuries and by 34.3% for slight injuries.

**Graph 1: Road traffic accidents and casualties,
January 2013 - December 2020**



Provisional data for the period February 2020 – December 2020

Information on methodological issues:

Sectoral Statistics Division
Transport Statistics Section
P. Tzortzi, L. Miliara
Tel: +30 213 135 2187, +30 213 135 3095
Fax : +30 213 135 2757
e-mail: p.tzortzi@statistics.gr , l.miliara@statistics.gr

Information for data provision:

Tel: +30 213 135 2022, 2308, 2310
e-mail: data.dissem@statistics.gr

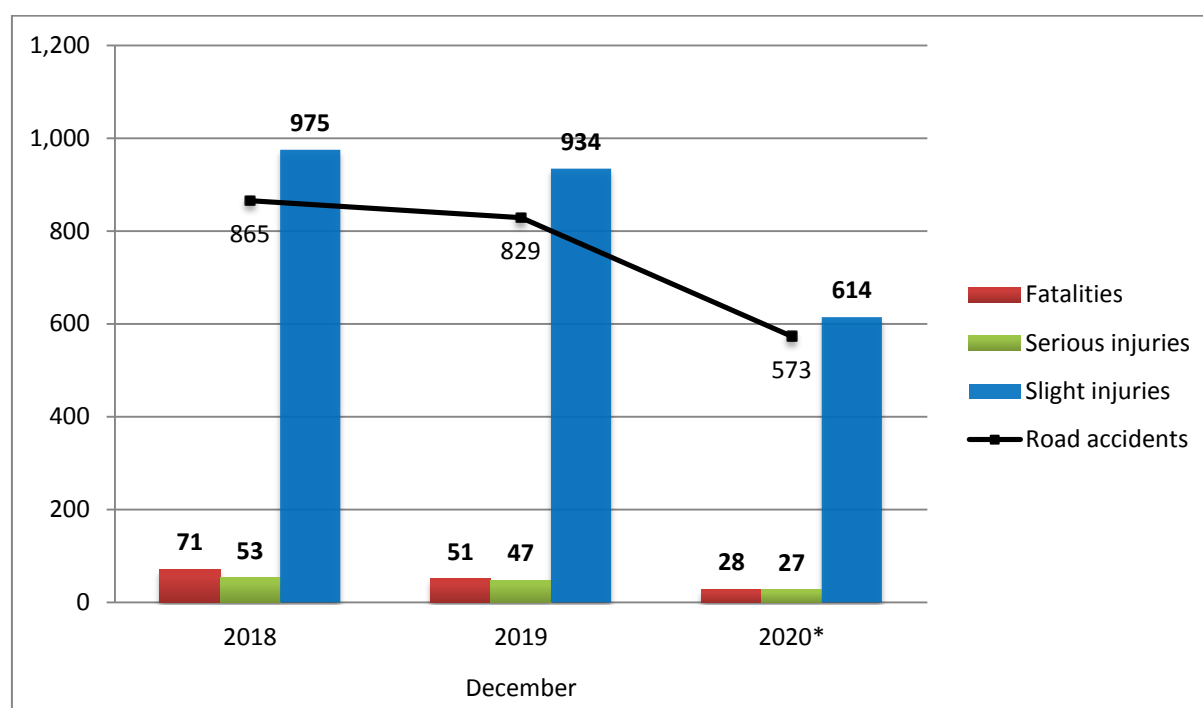
^[1] Data for the reference year is provisional until the finalization of the annual data, which takes place 10 months after the end of the reference year and is published in the corresponding press release of the following year. During these 10 months the provisional data is updated on the basis of the data of the Road Accident Forms of that year which is transmitted to ELSTAT by Police Authorities (see explanatory notes).

Table 1: Road traffic accidents and casualties, December 2018 - 2020*

	December				
	2018	2019	2019/2018 (%)	2020*	2020*/2019 (%)
Road accidents	865	829	-4.2	573	-30.9
Fatalities	71	51	-28.2	28	-45.1
Total injuries	1,028	981	-4.6	641	-34.7
Serious injuries	53	47	-11.3	27	-42.6
Slight injuries	975	934	-4.2	614	-34.3

* Provisional data

Graph 2: Road traffic accidents and casualties, December 2018 - 2020*



* Provisional data

Table 2: Road traffic accidents and casualties, by region and department, December 2019 and 2020*

Region and department	Road accidents			Fatalities			Serious injuries			Slight injuries		
	2019	2020*	%	2019	2020*	%	2019	2020*	%	2019	2020*	%
Greece Total	829	573	-30.9	51	28	-45.1	47	27	-42.6	934	614	-34.3
Anatoliki Makedonia and Thraki (East Macedonia and Thrace)	29	9	-69.0	7	2	-71.4	2	1	-50.0	33	6	-81.8
Drama	5	2	-60.0	0	0		0	0		6	2	
Evros	4	4	0.0	0	1		0	1		5	2	
Kavala	5	3	-40.0	1	1		0	0		5	2	
Xanthi	10	0	-100.0	3	0		2	0		10	0	
Rodopi	5	0	-100.0	3	0		0	0		7	0	
Kentriki Makedonia (Central Macedonia)	124	87	-29.8	6	4	-33.3	5	3	-40.0	146	91	-37.7
Imathia	2	2	0.0	0	0		1	0		4	2	
Thessaloniki	103	74	-28.2	3	3		3	2		123	77	
Kilkis	6	3	-50.0	0	0		0	0		8	5	
Pella	2	3	50.0	0	0		0	1		2	2	
Pieria	1	0	-100.0	1	0		0	0		1	0	
Serres	5	2	-60.0	2	0		0	0		4	3	
Chalkidiki	5	3	-40.0	0	1		1	0		4	2	
Dytiki Makedonia (West Macedonia)	4	3	-25.0	3	0	-100.0	0	0	-	1	3	200.0
Grevena	0	0	-	0	0		0	0		0	0	
Kastoria	1	1	0.0	1	0		0	0		0	1	
Kozani	3	2	-33.3	2	0		0	0		1	2	
Florina	0	0	-	0	0		0	0		0	0	
Ipeiros (Epirus)	12	4	-66.7	3	0	-100.0	2	1	-50.0	16	4	-75.0
Arta	1	0	-100.0	0	0		0	0		1	0	
Thesprotia	5	3	-40.0	1	0		1	1		4	3	
Ioannina	5	1	-80.0	1	0		1	0		11	1	
Preveza	1	0	-100.0	1	0		0	0		0	0	
Thessalia (Thessaly)	22	14	-36.4	2	3	50.0	4	4	0.0	25	8	-68.0
Karditsa	6	2	-66.7	1	0		2	0		7	2	
Larissa	4	4	0.0	0	0		0	1		5	4	
Magnissia	9	4	-55.6	1	2		2	2		7	0	
Trikala	3	4	33.3	0	1		0	1		6	2	
Ionian Nisia (Ionian Islands)	10	6	-40.0	0	1	-	1	0	-100.0	12	6	-50.0
Zakynthos	1	3	200.0	0	0		0	0		1	3	
Kerkyra	4	2	-50.0	0	1		0	0		4	2	
Kefallinia	2	0	-100.0	0	0		0	0		2	0	
Lefkada	3	1	-66.7	0	0		1	0		5	1	

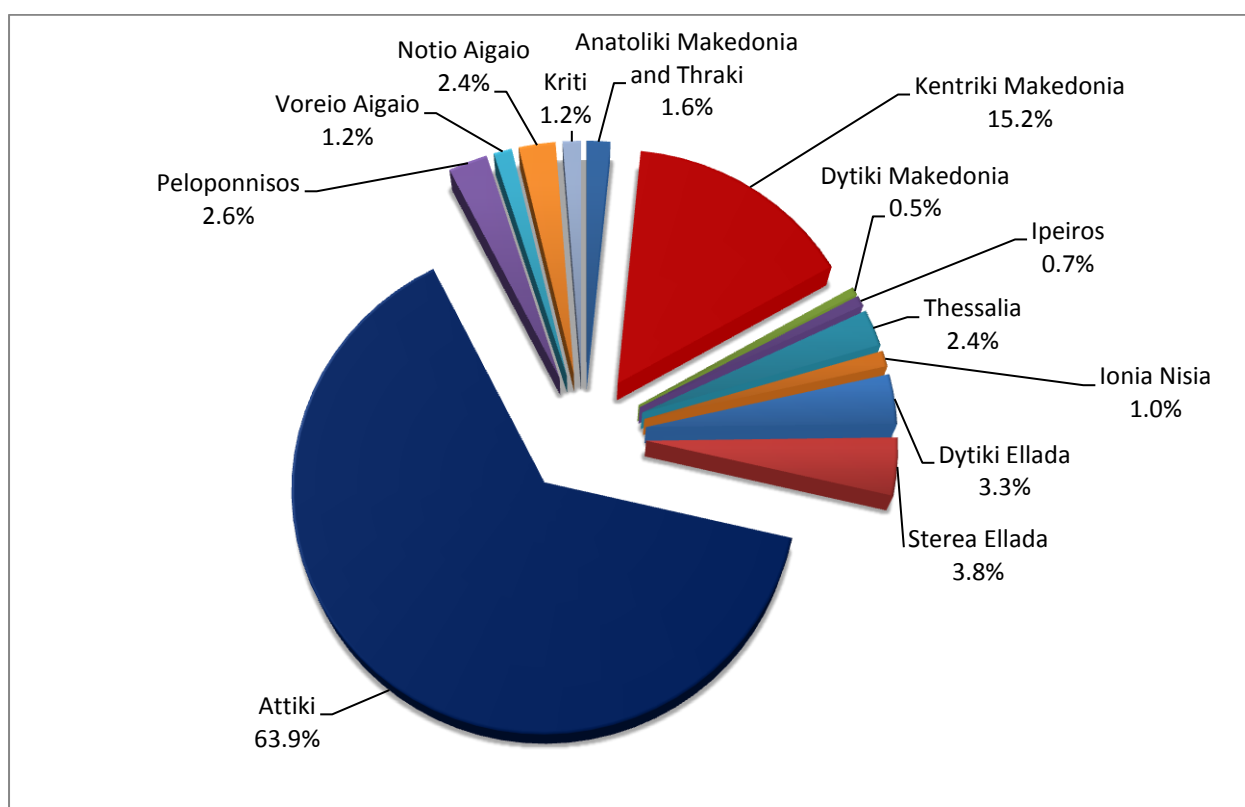
* Provisional data

Table 2: Road traffic accidents and casualties, by region and department, December 2019 and 2020* (Continued)

Region and department	Road accidents			Fatalities			Serious injuries			Slight injuries		
	2019	2020*	%	2019	2020*	%	2019	2020*	%	2019	2020*	%
Dytiki Ellada (West Greece)	33	19	-42.4	4	2	-50.0	4	2	-50.0	32	23	-28.1
Etolia & Akarnania	12	9	-25.0	3	1		3	2		9	11	
Achaia	16	6	-62.5	0	1		1	0		18	5	
Ilia	5	4	-20.0	1	0		0	0		5	7	
Sterea Ellada	30	22	-26.7	3	1	-66.7	5	1	-80.0	34	23	-32.4
Viotia	1	3	200.0	0	0		0	0		1	3	
Evia	16	14	-12.5	1	1		5	1		16	13	
Evrytania	3	0	-100.0	1	0		0	0		2	0	
Fthiotida	9	4	-55.6	1	0		0	0		14	6	
Fokida	1	1	0.0	0	0		0	0		1	1	
Attiki (Attica)	502	366	-27.1	17	11	-35.3	14	9	-35.7	566	405	-28.4
Peloponnisos (Peloponnese)	28	15	-46.4	2	1	-50.0	0	3	-	38	17	-55.3
Argolida	6	5	-16.7	0	0		0	2		10	4	
Arkadia	5	0	-100.0	0	0		0	0		5	0	
Korinthia	12	7	-41.7	2	1		0	0		17	11	
Lakonia	2	0	-100.0	0	0		0	0		3	0	
Messinia	3	3	0.0	0	0		0	1		3	2	
Voreio Aigaio (North Aegean)	13	7	-46.2	0	0	-	2	2	0.0	15	7	-53.3
Lesvos	4	5	25.0	0	0		0	1		5	6	
Samos	8	1	-87.5	0	0		1	0		10	1	
Chios	1	1	0.0	0	0		1	1		0	0	
Notio Aigaio (South Aegean)	11	14	27.3	3	1	-66.7	3	1	-66.7	6	13	116.7
Dodekanissos	7	8	14.3	2	0		1	0		5	9	
Kyklades	4	6	50.0	1	1		2	1		1	4	
Kriti (Crete)	11	7	-36.4	1	2	100.0	5	0	-100.0	10	8	-20.0
Iraklio	4	7	75.0	0	2		3	0		3	8	
Lassithi	4	0	-100.0	0	0		2	0		5	0	
Rethymno	3	0	-100.0	1	0		0	0		2	0	
Chania	0	0	-	0	0		0	0		0	0	

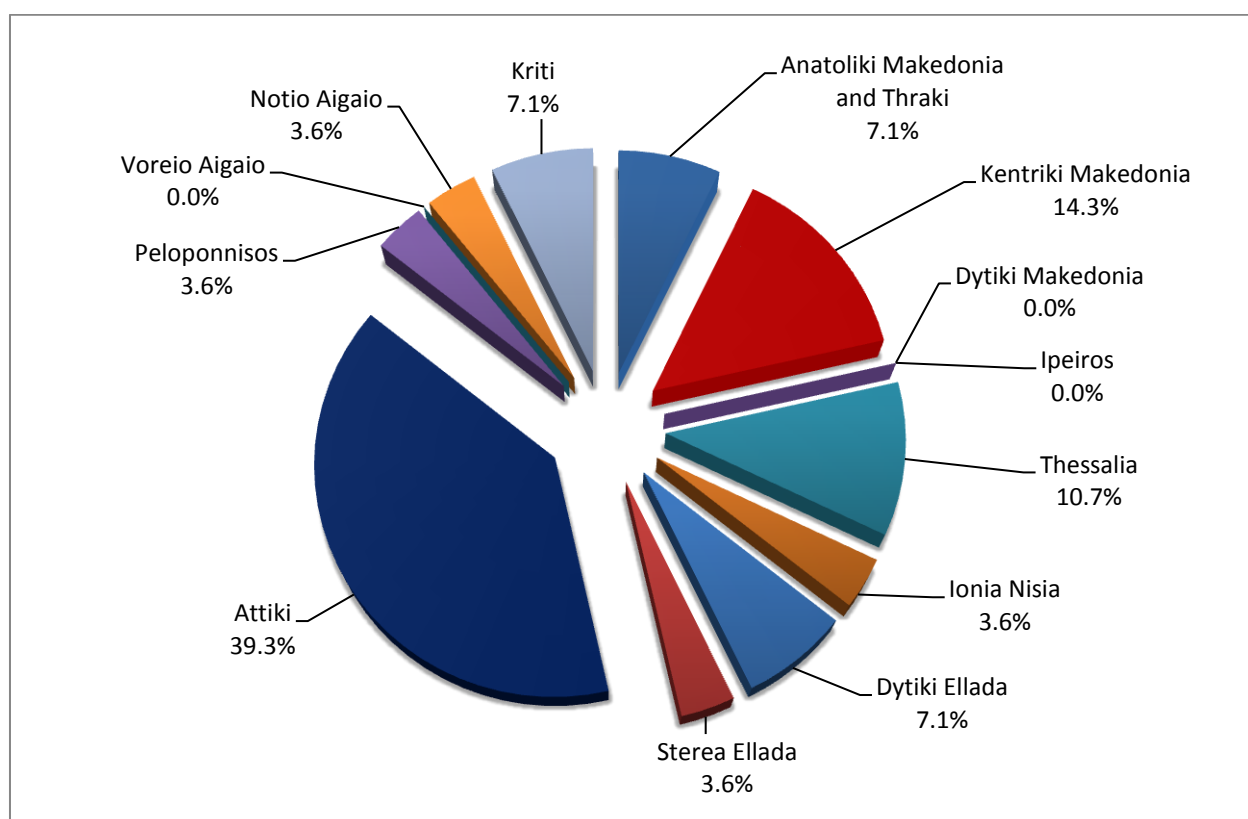
* Provisional data

Graph 3: Road traffic accidents by region, December 2020 *



* Provisional data

Graph 4: Fatalities by region, December 2020 *



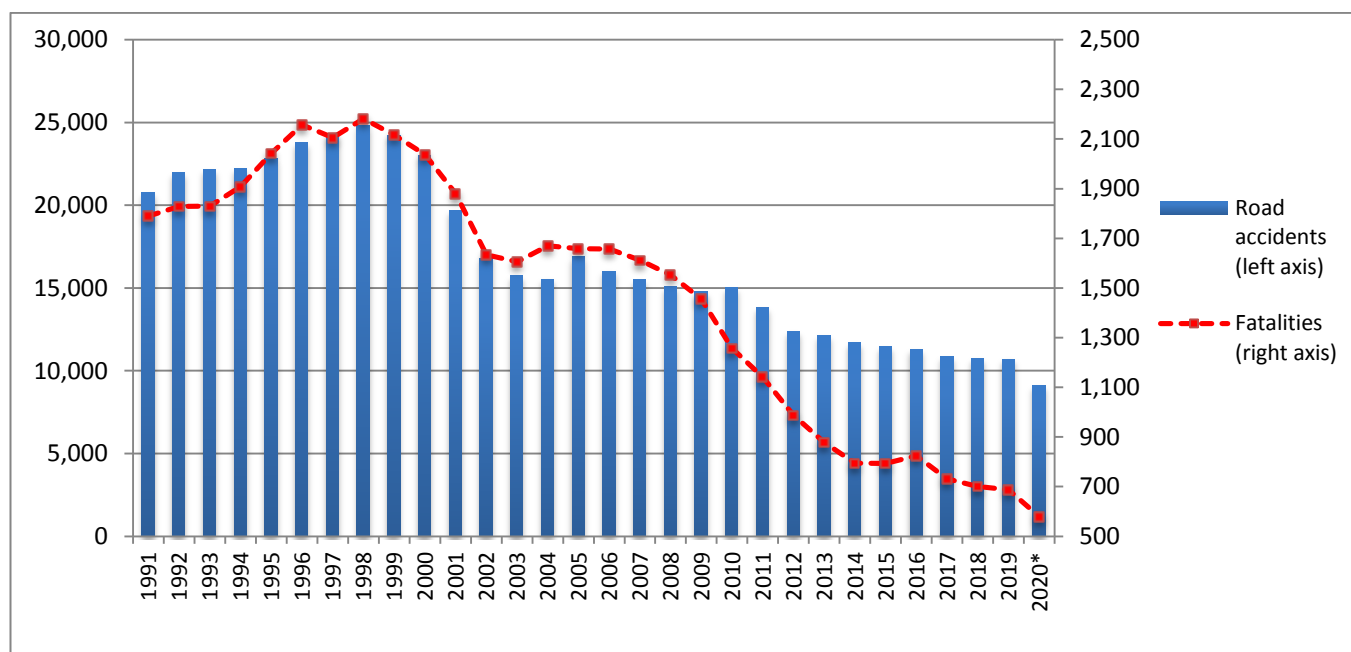
* Provisional data

Table 3: Road traffic accidents and casualties for the period January - December 2018, 2019 and 2020*

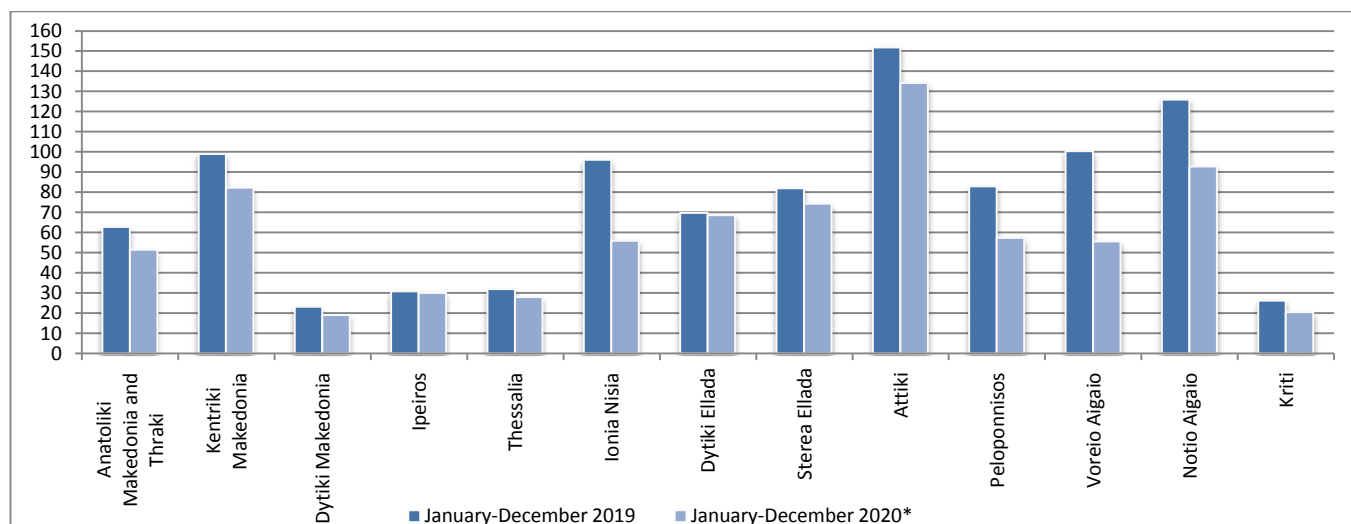
	2018	2019	2020*
	January - December	January - December	January - December
Road Accidents	10,737	10,712	9,105
Annual Change (%) :		-0.2%	-15.0%
Fatalities	700	688	579
Annual Change (%) :		-1.7%	-15.8%
Serious injuries	727	652	487
Annual Change (%) :		-10.3%	-25.3%
Slight injuries	12,422	12,350	10,130
Annual Change (%) :		-0.6%	-18.0%

* Provisional data

Graph 5: Total road traffic accidents and fatalities, 1991-2020*

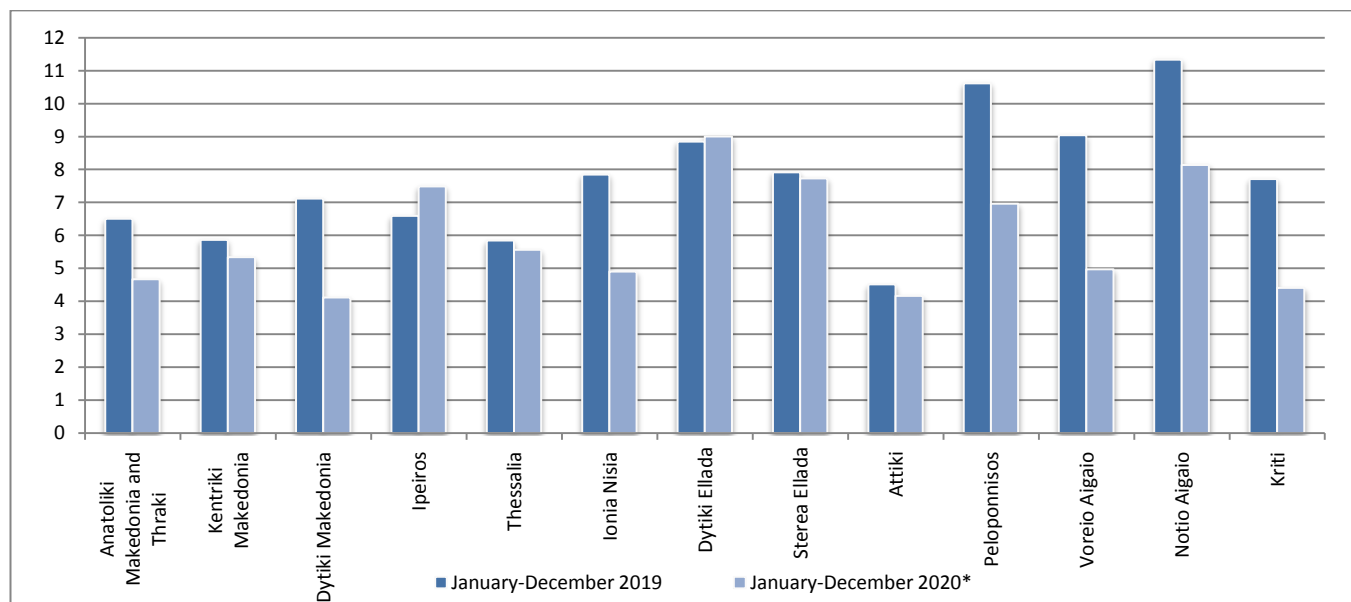


Graph 6: Road traffic accidents per 100,000 inhabitants

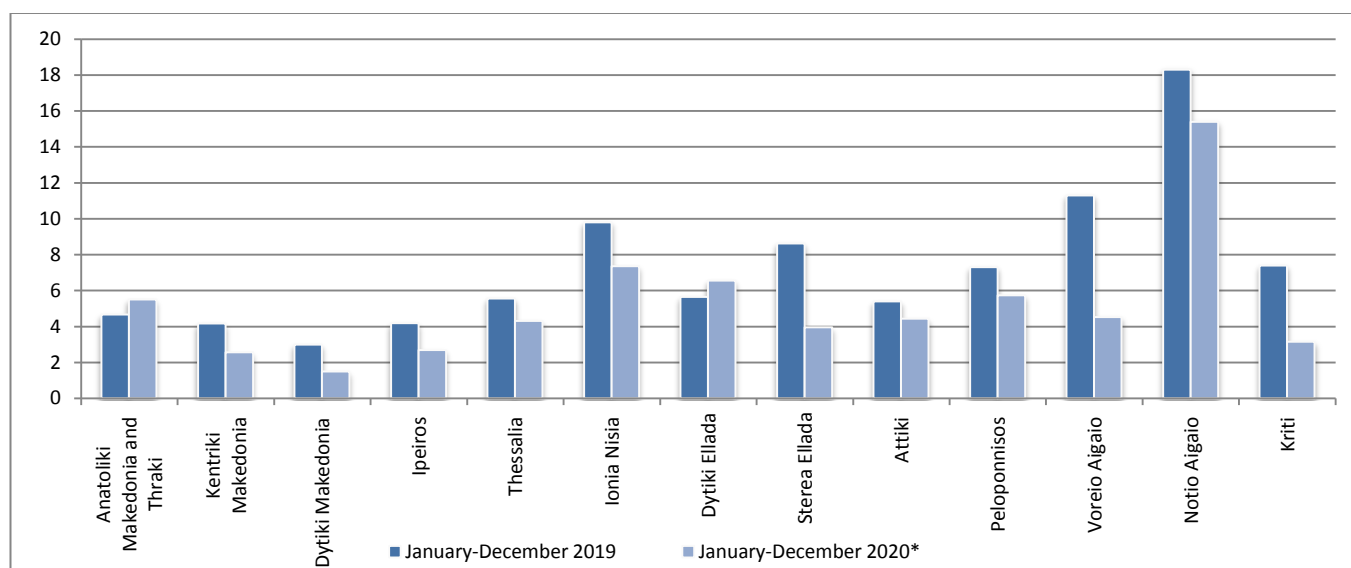


* Provisional data

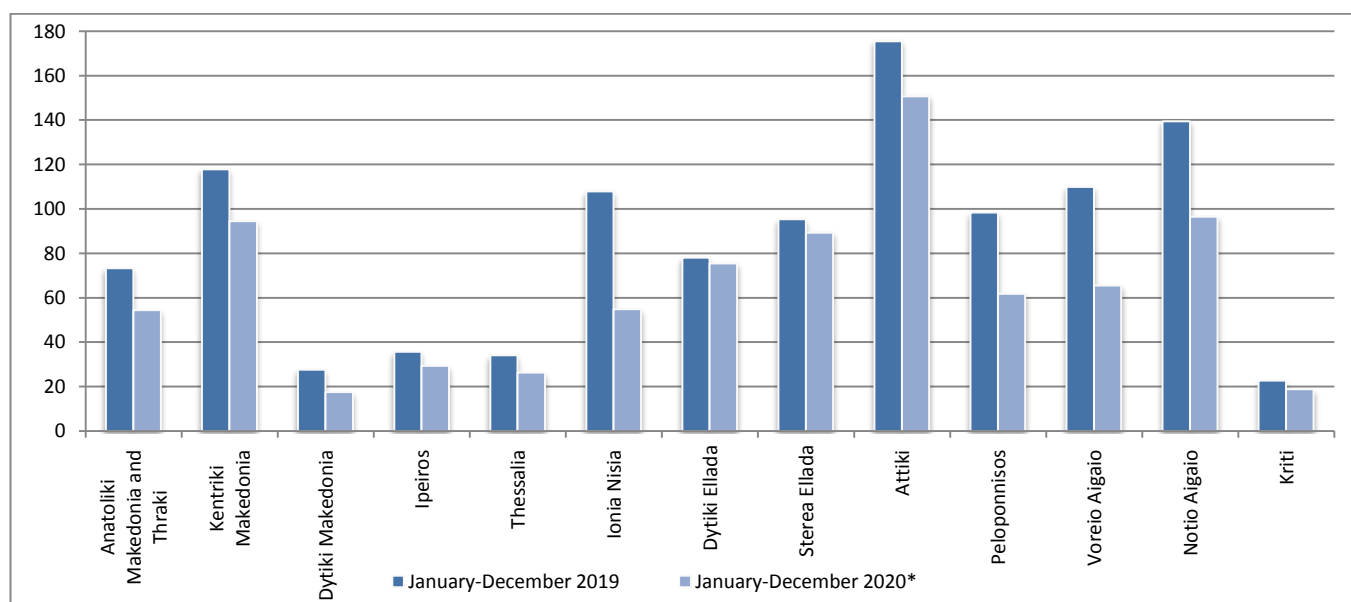
Graph 7: Fatalities per 100,000 inhabitants



Graph 8: Serious injuries per 100,000 inhabitants



Graph 9: Slight injuries per 100,000 inhabitants



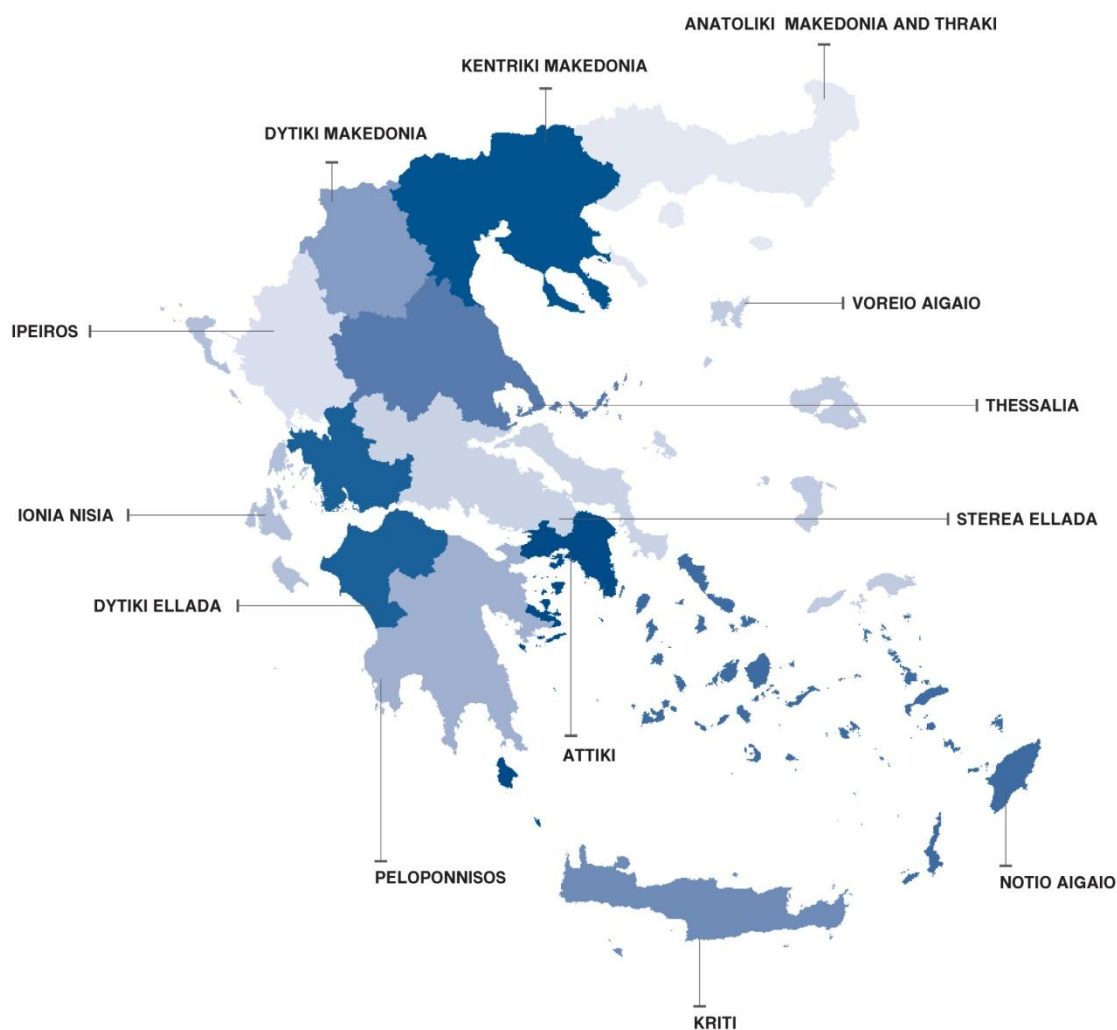
* Provisional data

EXPLANATORY NOTES

Survey on Road Traffic Accidents The Survey on Road Traffic Accidents is conducted on a monthly basis and it records, for each region (see map) and department of Greece and for each month separately, the number of accidents resulting in death or injury, as well as the number of persons injured by categories (drivers, passengers, pedestrians).

On a yearly basis, road traffic accidents are further analyzed. The competent agencies for filling in/collecting the forms on road accidents are the local Police Authorities and the local Port Authorities of Greece.

The lower level of analysis for the place where an injury road accident occurred is the settlement. Data are collected on a monthly basis. The main variables are the following: place of accident, kind of road, casualties, conditions of road surface and type of road.



Legal basis The Survey on Road Traffic Accidents is governed by Council Decision 93/704 of the European Community.

Reference period Monthly.

Availability of data Provisional data are available 2 months after the reference month.
Final data are available 10 months after the reference year.

Definitions **Road accident** (injury accident): Any accident involving at least one road motor vehicle in motion on a public road or square to which the public has access (excluding yards, industrial sites or vehicle depot of public transport enterprises), resulting in at least one injured or killed person. Accidents with only material damages are not included.

Fatality (Death): Any person killed immediately or dying within 30 days as a result of an injury accident (This national definition applies since 01.01.1996)

Person injured: Any person who sustained an injury as result of an injury accident, and who normally needs medical treatment.

Serious injury: Any person who sustained an injury as result of an injury accident, such as brain damages, mutilation, multiple injuries, which may result in lack of awareness or which are life-threatening.

Slight injury: Any person injured who sustained minor and not life-threatening injuries.

Vehicle: Include motor vehicles, trolleybuses, motorcycles, bicycles, motorbikes, agricultural and road making machines, animal and hand-drawn vehicles. Railway vehicles are excluded, unless the road accident involves at least one of the aforementioned types of vehicles and therefore, railway vehicles are considered vehicles.

Methodology The forms of the survey are filled in by the local Police Authorities and the local Port Authorities as well.

References More information about Road Traffic Accidents is available on ELSTAT's website and more specifically at the link: <https://www.statistics.gr/en/statistics/-/publication/SDT03/->.