



## PRESS RELEASE

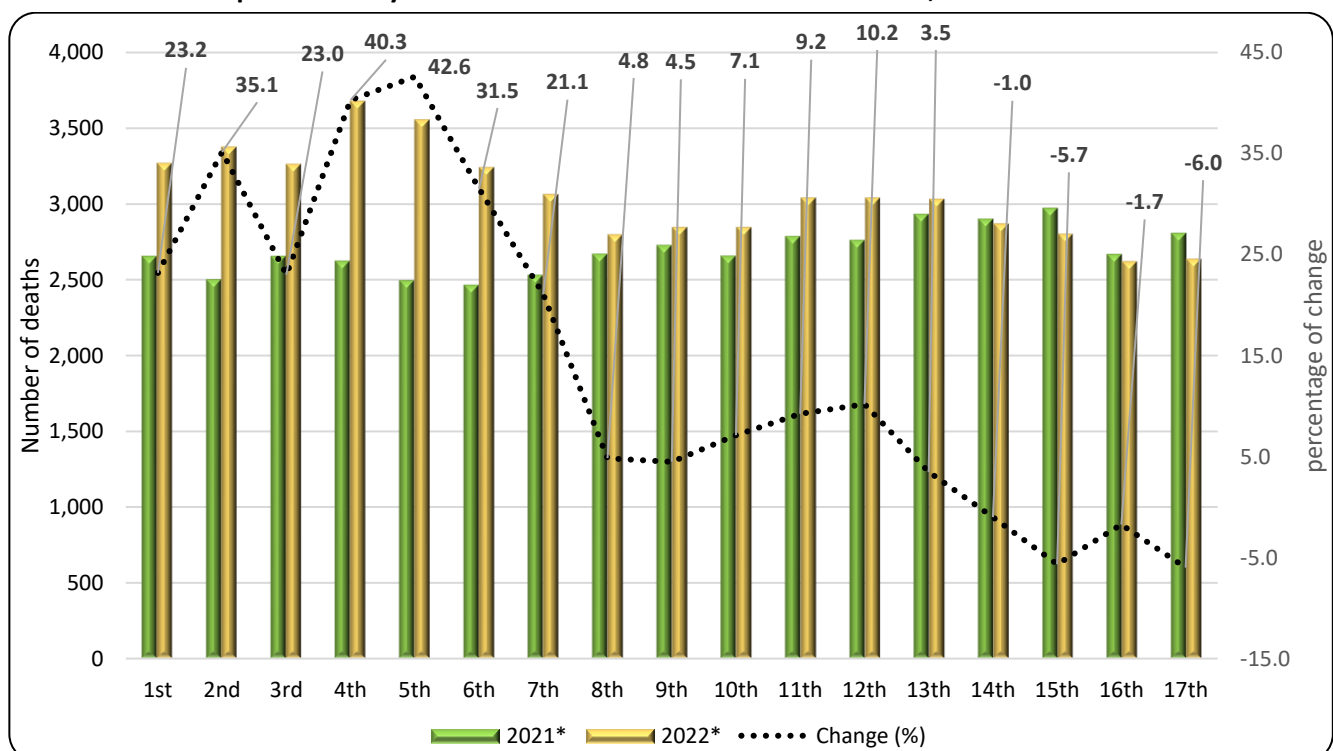
### DATA ON WEEKLY DEATHS: Period 1<sup>st</sup> to 17<sup>th</sup> week, 2022

The Hellenic Statistical Authority (ELSTAT) announces an ad-hoc press release with provisional statistical data depicting the weekly evolution of death counts for the period from the first (1<sup>st</sup>) to the seventeenth (17<sup>th</sup>) week of 2022. Data refers to the deaths that occurred in the Greek territory during that period due to various causes including deaths attributed to Covid-19.

The data included in this publication are compiled within the framework of the Vital Statistics Survey and are provided from all the Municipal Civil Registers of Greece according to the vital events that have been declared and registered up until the date of data transmission. Overdue registrations of deaths are integrated at a later stage in the date of occurrence.

According to these data, **the number of deaths in Greece for the first seventeen (17) weeks of 2022 (3/1/2022 - 1/5/2022) amounted to 51,960** (26,147 men and 25,813 women), **whereas for the corresponding period of 2021 (4/1/2021 - 2/5/2021) had amounted to 45,761** (23,503 men and 22,258 women) recording an increase of 6,199 deaths (13.55%). An increase of 8,261 deaths (18.90%) is recorded compared to the seventeen-week cumulative average of the six-year period 2016 - 2021 (43,699 deaths). The annual rates of change for the period 2016 - 2021 amount to -2.93% in 2021 compared to 2020 (44,460), 0.07% in 2020 compared to 2019 (44,427), 7.21% in 2019 compared to 2018 (41,439), -9.75% in 2018 compared to 2017 (45,918) and 14.25% in 2017 compared to 2016 (40,191) (Tables 1, 2, 3 and 4).

Graph 1. Weekly evolution of deaths for the weeks 1<sup>st</sup> – 17<sup>th</sup>, 2021\* and 2022\*



\*Provisional data

**Information on methodological issues:**

Population, Employment and Cost of Living Statistics Division  
Population and Migration Statistics Section  
Christos Christou, tel: +30 213 135 2884, e-mail : [c.christou@statistics.gr](mailto:c.christou@statistics.gr)

**Information on data provision:**

tel: +30 213 135 2022, 2308, 2310  
e-mail: [data.dissem@statistics.gr](mailto:data.dissem@statistics.gr)

**Table 1. Weekly evolution of deaths, 2021 and 2022**

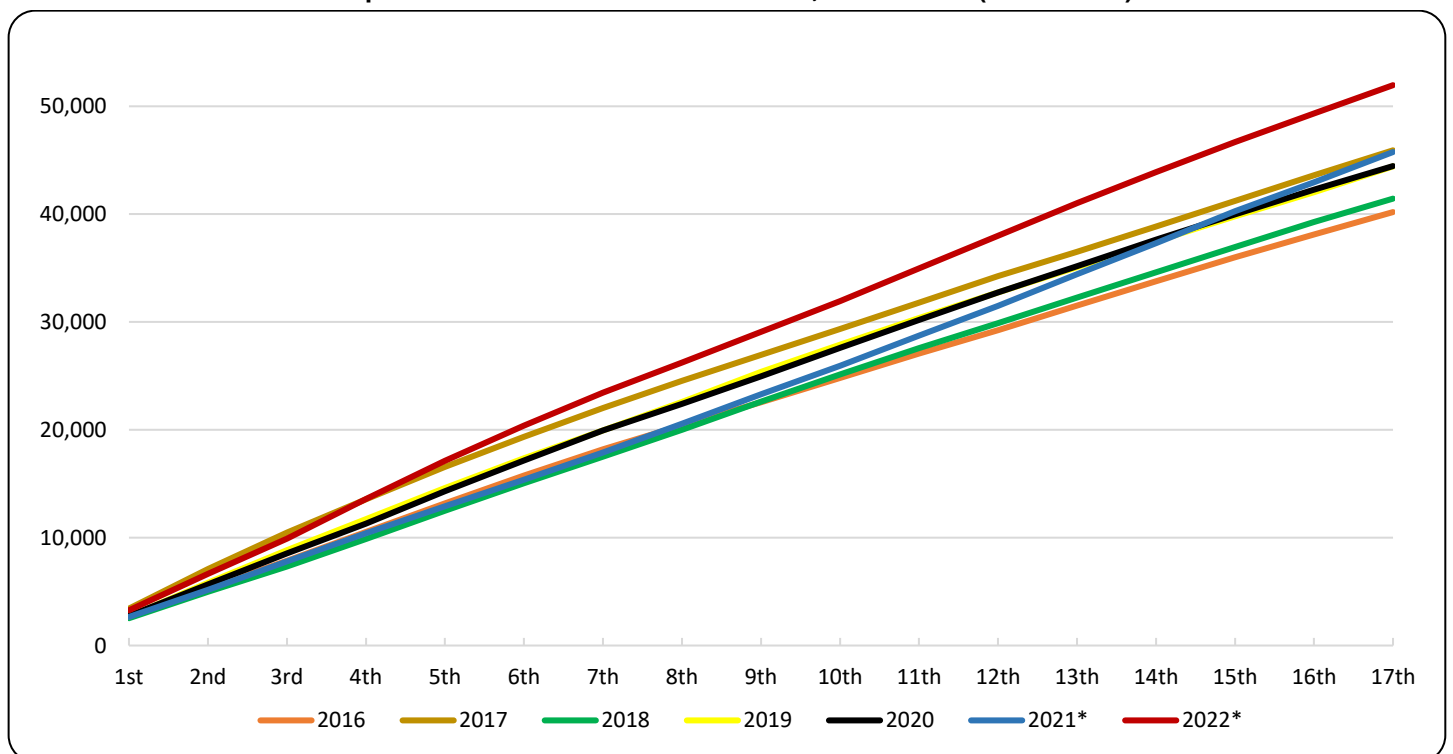
Week	2021*	2022*	Change (%)
1 <sup>st</sup>	2,652	3,267	23.2
2 <sup>nd</sup>	2,498	3,376	35.1
3 <sup>rd</sup>	2,652	3,262	23.0
4 <sup>th</sup>	2,621	3,677	40.3
5 <sup>th</sup>	2,493	3,555	42.6
6 <sup>th</sup>	2,463	3,239	31.5
7 <sup>th</sup>	2,529	3,062	21.1
8 <sup>th</sup>	2,667	2,796	4.8
9 <sup>th</sup>	2,724	2,846	4.5
10 <sup>th</sup>	2,655	2,844	7.1
11 <sup>th</sup>	2,783	3,040	9.2
12 <sup>th</sup>	2,759	3,040	10.2
13 <sup>th</sup>	2,929	3,031	3.5
14 <sup>th</sup>	2,898	2,869	-1.0
15 <sup>th</sup>	2,969	2,801	-5.7
16 <sup>th</sup>	2,665	2,619	-1.7
17 <sup>th</sup>	2,804	2,636	-6.0
<b>Total</b>	<b>45,761</b>	<b>51,960</b>	<b>13.55</b>

\*Provisional data

According to the above data, the highest percentage increase of deaths for the period of the first seventeen (17) weeks of the year 2022 compared to the corresponding period of 2021 was recorded in the 5<sup>th</sup> (31/01/2022 - 6/2/2022), the 4<sup>th</sup> (24/01/2022 - 30/1/2022) and the 2<sup>nd</sup> week (10/01/2022 - 16/1/2022) by 42.6%, 40.3% and 35.1% (Table 1) whereas the most notable decrease was recorded in the 17<sup>th</sup> and the 15<sup>th</sup> week by 6.0% and 5.7% respectively.

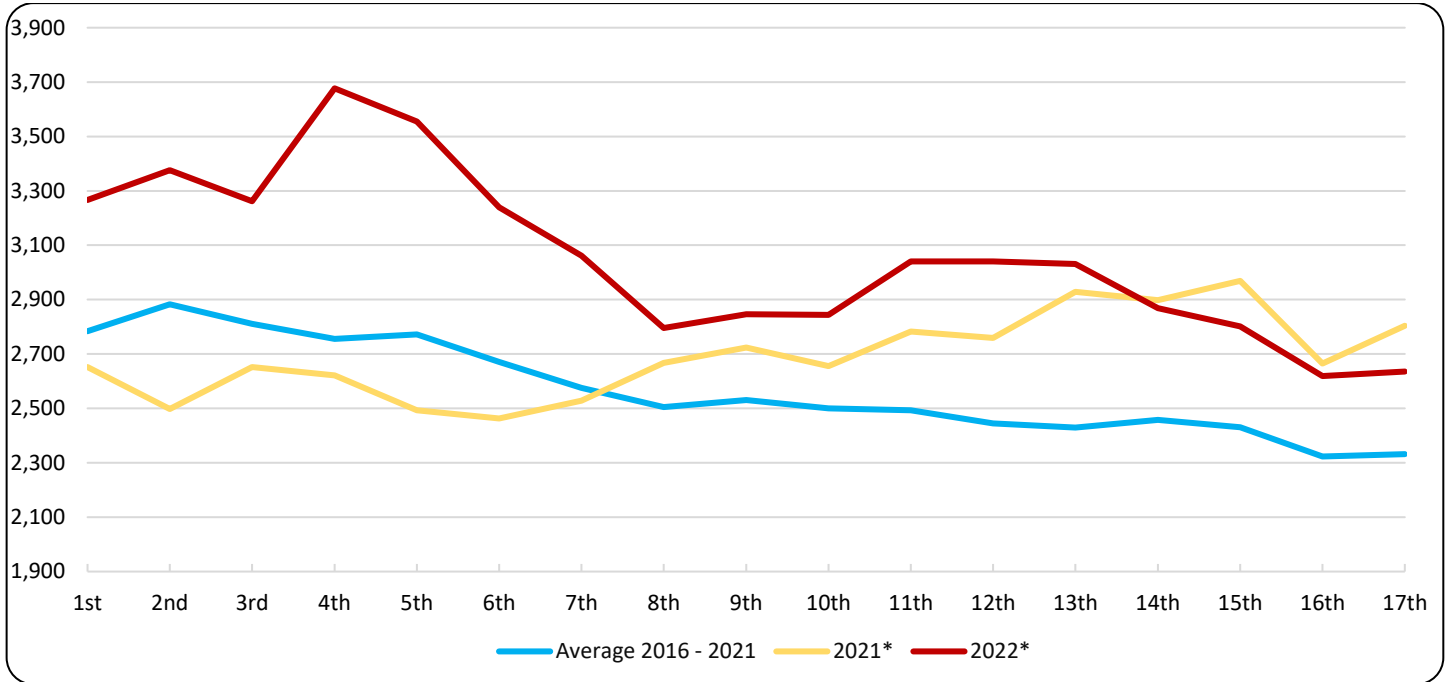
It should be noted that data are updated after integration of more recent data or upon revision of already transmitted data by the Registry Offices. Consequently, data may differ from those already published in previous Press Releases.

**Graph 2. Deaths for the weeks 1<sup>st</sup> – 17<sup>th</sup>, 2016 - 2022 (cumulative)**



\*Provisional data

**Graph 3. Deaths by week for the weeks 1<sup>st</sup> - 17<sup>th</sup>, 2021, 2022 and Average for the period 2016-2021**



\*Provisional data

**Table 2. Deaths for the weeks 1<sup>st</sup> – 17<sup>th</sup>, 2016 - 2022 (cumulative)**

Week/Year	2016	2017	2018	2019	2020	2021*	2022*	Average 2016 - 2021
1st	2,637	3,425	2,533	2,706	2,751	2,652	3,267	2,784
1st - 2nd	5,275	7,105	4,986	5,811	5,674	5,150	6,643	5,667
1st - 3rd	7,876	10,469	7,331	8,850	8,537	7,802	9,905	8,478
1st - 4th	10,528	13,551	9,879	11,710	11,311	10,423	13,582	11,234
1st - 5th	13,177	16,553	12,484	14,603	14,301	12,916	17,137	14,006
1st - 6th	15,771	19,343	15,041	17,375	17,151	15,379	20,376	16,677
1st - 7th	18,207	22,018	17,510	19,938	19,933	17,908	23,438	19,252
1st - 8th	20,422	24,541	20,003	22,598	22,402	20,575	26,234	21,757
1st - 9th	22,561	26,940	22,613	25,367	24,947	23,299	29,080	24,288
1st - 10th	24,809	29,345	25,145	27,886	27,592	25,954	31,924	26,789
1st - 11th	27,064	31,789	27,560	30,356	30,186	28,737	34,964	29,282
1st - 12th	29,249	34,247	29,890	32,747	32,734	31,496	38,004	31,727
1st - 13th	31,508	36,500	32,255	35,079	35,173	34,425	41,035	34,157
1st - 14th	33,783	38,863	34,596	37,492	37,627	37,323	43,904	36,614
1st - 15th	36,010	41,226	36,945	39,804	39,989	40,292	46,705	39,044
1st - 16th	38,110	43,593	39,264	42,024	42,257	42,957	49,324	41,368
1st - 17th	40,191	45,918	41,439	44,427	44,460	45,761	51,960	43,699
<b>Change (%)</b>		<b>14.25</b>	<b>-9.75</b>	<b>7.21</b>	<b>0.07</b>	<b>2.93</b>	<b>13.55</b>	

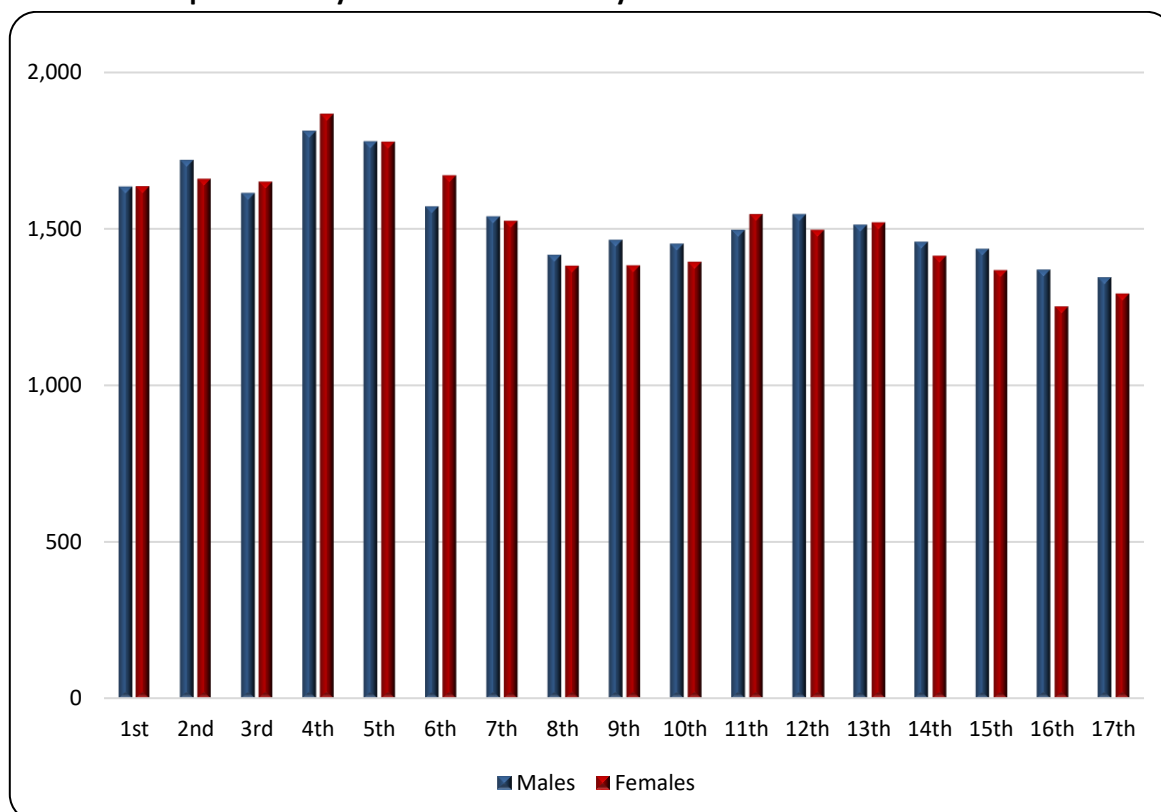
\*Provisional data

**Table 3. Weekly evolution of deaths by sex, for the weeks 1<sup>st</sup> – 17<sup>th</sup>, 2022\***

Week	Total	Males	Females
1 <sup>st</sup>	3,267	1,633	1,634
2 <sup>nd</sup>	3,376	1,718	1,658
3 <sup>rd</sup>	3,262	1,613	1,649
4 <sup>th</sup>	3,677	1,811	1,866
5 <sup>th</sup>	3,555	1,778	1,777
6 <sup>th</sup>	3,239	1,570	1,669
7 <sup>th</sup>	3,062	1,538	1,524
8 <sup>th</sup>	2,796	1,415	1,381
9 <sup>th</sup>	2,846	1,464	1,382
10 <sup>th</sup>	2,844	1,451	1,393
11 <sup>th</sup>	3,040	1,495	1,545
12 <sup>th</sup>	3,040	1,545	1,495
13 <sup>th</sup>	3,031	1,512	1,519
14 <sup>th</sup>	2,869	1,457	1,412
15 <sup>th</sup>	2,801	1,435	1,366
16 <sup>th</sup>	2,619	1,368	1,251
17 <sup>th</sup>	2,636	1,344	1,292
<b>Total</b>	<b>51,960</b>	<b>26,147</b>	<b>25,813</b>

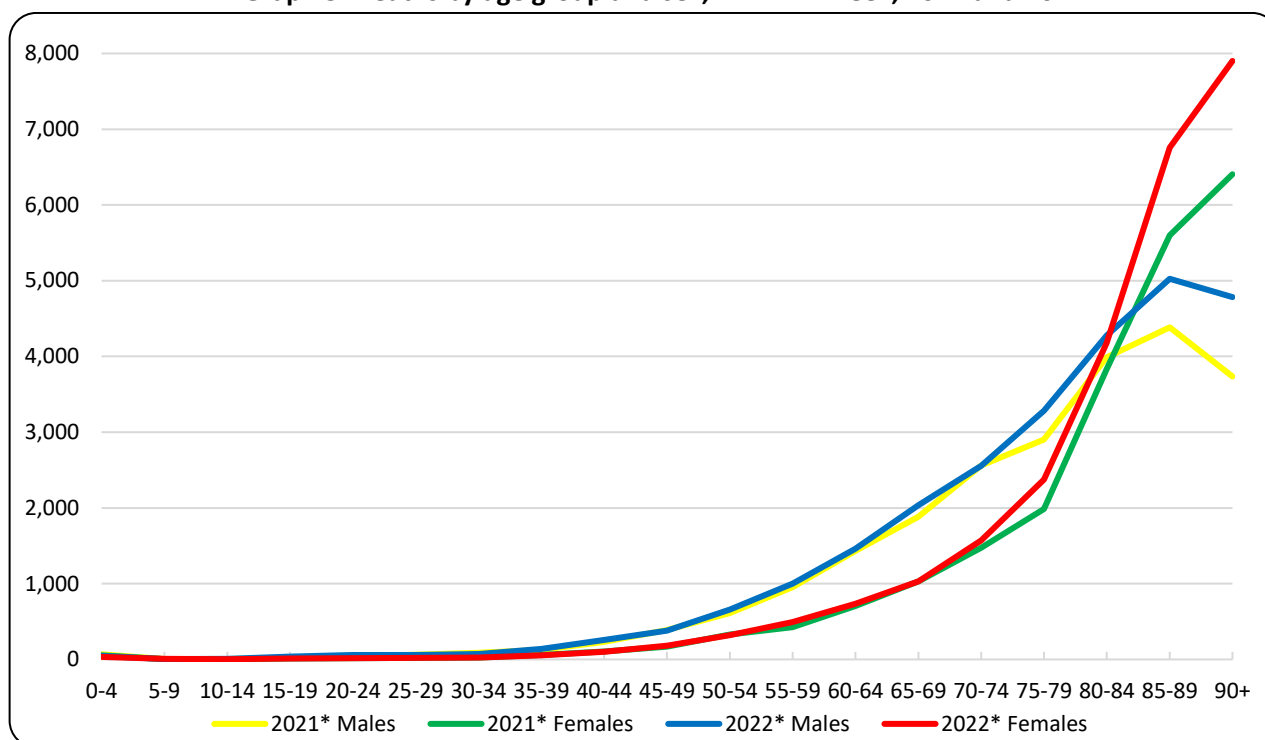
\*Provisional data

**Graph 4. Weekly evolution of deaths by sex for the weeks 1<sup>st</sup> – 17<sup>th</sup> 2022\***



\*Provisional data

**Graph 5. Deaths by age group and sex, 1<sup>st</sup> – 17<sup>th</sup> week, 2021 and 2022\***



\*Provisional data

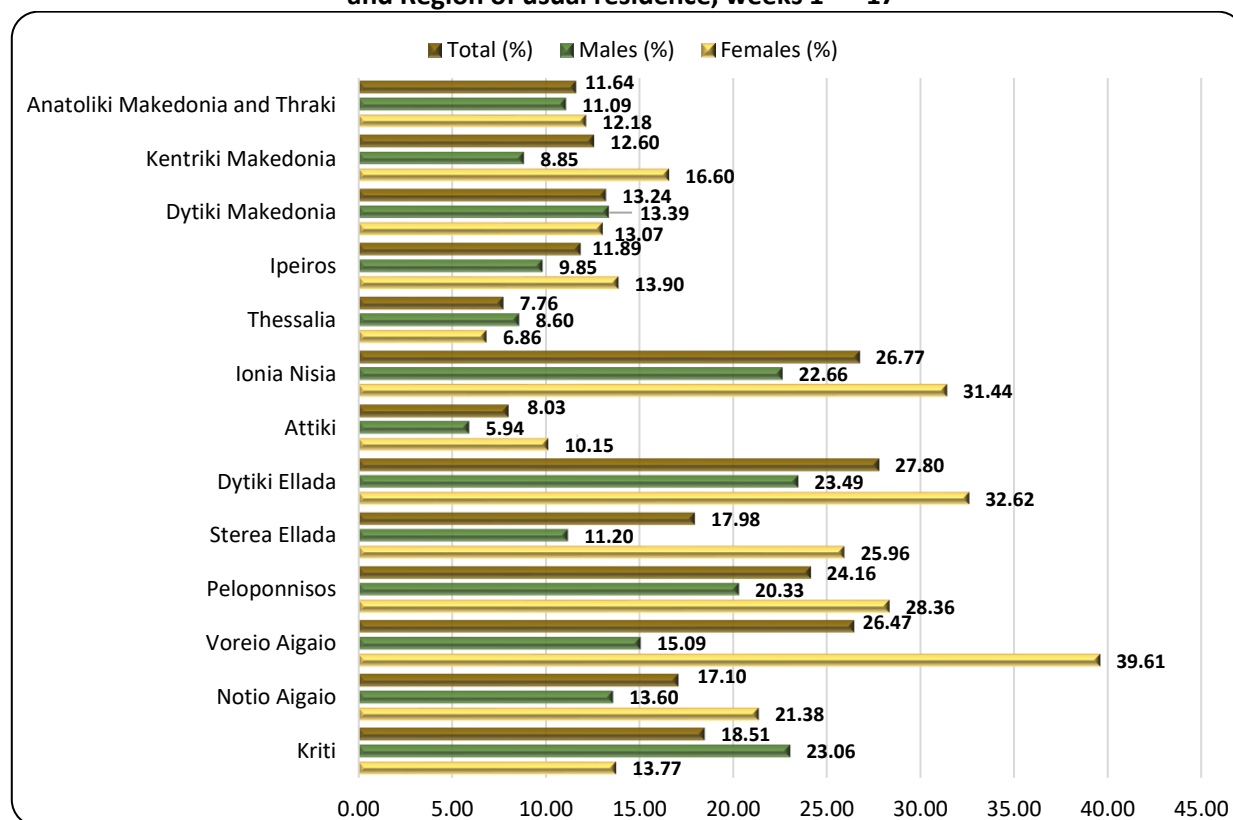
**Table 4. Deaths by age group and sex, weeks 1<sup>st</sup> – 17<sup>th</sup>, 2021 and 2022**

Year	2021*			2022*			
	Age	Total	Males	Females	Total	Males	Females
0 - 4		122	69	53	80	45	35
5 - 9		10	6	4	12	5	7
10 - 14		10	6	4	13	10	3
15 - 19		33	22	11	47	36	11
20 - 24		55	39	16	72	57	15
25 - 29		83	64	19	82	60	22
30 - 34		112	87	25	96	73	23
35 - 39		185	128	57	192	138	54
40 - 44		340	233	107	357	258	99
45 - 49		558	388	170	561	379	182
50 - 54		939	611	328	980	660	320
55 - 59		1,380	954	426	1,495	1,003	492
60 - 64		2,140	1,433	707	2,194	1,460	734
65 - 69		2,914	1,884	1,030	3,066	2,035	1,031
70 - 74		4,036	2,561	1,475	4,128	2,558	1,570
75 - 79		4,888	2,903	1,985	5,657	3,282	2,375
80 - 84		7,824	3,990	3,834	8,459	4,278	4,181
85 - 89		9,985	4,384	5,601	11,783	5,025	6,758
90+		10,141	3,736	6,405	12,686	4,785	7,901
Unknown		6	5	1	0	0	0
<b>Total</b>		<b>45,761</b>	<b>23,503</b>	<b>22,258</b>	<b>51,960</b>	<b>26,147</b>	<b>25,813</b>

\*Provisional data

As regards the breakdown of data by age, during the first seventeen (17) weeks of 2022, more deaths were observed compared to the corresponding period of 2021, in absolute figures, mainly at the age groups over 90 (2,545 deaths), 85 to 89 (1,798), 75 to 79 (769 deaths) and 80 to 84 (635), whereas less deaths were recorded mainly at the age group 30 to 34 (16 deaths) and at the age group 0 to 4 (42 deaths) (Table 4).

**Graph 6. Annual change of deaths 2022\*/2021\* (%) by sex and Region of usual residence, weeks 1<sup>st</sup> – 17<sup>th</sup>**



\*Provisional data

**Table 5. Annual change of deaths 2022/2021 (%) by sex and Region of usual residence, weeks 1<sup>st</sup> – 17<sup>th</sup>**

Region	2021*			2022*			Change (%)		
	Total	Males	Females	Total	Males	Females	Total	Males	Females
Anatoliki Makedonia and Thraki	2,681	1,334	1,347	2,993	1,482	1,511	11.64	11.09	12.18
Kentriki Makedonia	8,257	4,269	3,988	9,297	4,647	4,650	12.60	8.85	16.60
Dytiki Makedonia	1,254	657	597	1,420	745	675	13.24	13.39	13.07
Ipeiros	1,472	731	741	1,647	803	844	11.89	9.85	13.90
Thessalia	3,429	1,768	1,661	3,695	1,920	1,775	7.76	8.60	6.86
Ionia Nisia	863	459	404	1,094	563	531	26.77	22.66	31.44
Attiki	15,893	7,983	7,910	17,170	8,457	8,713	8.03	5.94	10.15
Dytiki Ellada	2,853	1,507	1,346	3,646	1,861	1,785	27.80	23.49	32.62
Sterea Ellada	2,442	1,321	1,121	2,881	1,469	1,412	17.98	11.20	25.96
Peloponnisos	2,575	1,348	1,227	3,197	1,622	1,575	24.16	20.33	28.36
Voreio Aigaio	767	411	356	970	473	497	26.47	15.09	39.61
Notio Aigaio	1,029	566	463	1,205	643	562	17.10	13.60	21.38
Kriti	2,221	1,132	1,089	2,632	1,393	1,239	18.51	23.06	13.77
Unknown	25	17	8	113	69	44	352.00	305.88	450.00
<b>Total</b>	<b>45,761</b>	<b>23,503</b>	<b>22,258</b>	<b>51,960</b>	<b>26,147</b>	<b>25,813</b>	<b>13.55</b>	<b>11.25</b>	<b>15.97</b>
Abroad	73	48	25	31	17	14	-57.53	-64.58	-44.00

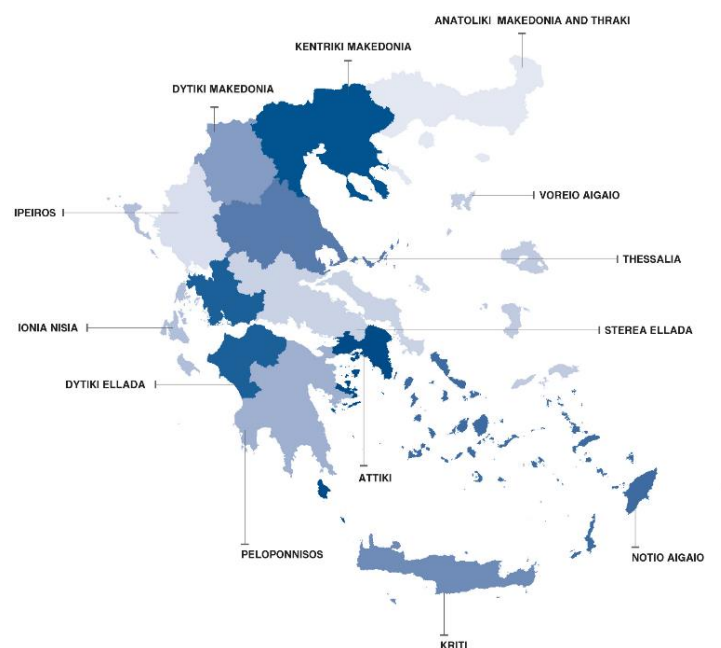
\*Provisional data

As regards the breakdown of data by place of usual residence of the deceased person, during the first seventeen (17) weeks of 2022, an increase of deaths is observed in all the thirteen (13) Regions of the country as compared to the corresponding period of 2021. The most notable increase, in absolute figures, is observed in the Regions of Attiki, Kentriki Makedonia and Dytiki Ellada, namely by 1,277, 1,040 and 793 deaths respectively (Graph 6, Table 5).

## EXPLANATORY NOTES

<b>Vital Statistics-Data on weekly deaths</b>	For the Vital statistics Survey, data are provided by Civil Register Offices from all over the Country. Data presented in this press release refer to the weekly evolution of death counts according to the international standard of weeks ISO 8601. This is an ad-hoc data processing for the purpose of depicting the evolution of deaths during the Covid-19 pandemic.
<b>Reference periods</b>	2021: 4/1/2021 - 2/5/2021 2022: 3/1/2022 - 1/5/2022
<b>Legal Framework</b>	Law 344/76 concerning the “Registration of vital events” which lays down the obligations of the Civil Register Offices to collect and then transmit the data, as well as by Law 3832/2010 on the “Greek Statistical System”, as amended.
<b>Coverage</b>	The Vital Statistics survey is an exhaustive survey and covers all deaths of usual resident population that occur in the Greek territory.
<b>Definitions</b>	All deaths of usual residents taking place in the Greek territory are recorded, regardless of the cause of death. Deaths of usual resident population of other countries are also recorded but not counted. The deaths of migrants-refugees during their attempt to approach the Greek islands from the Turkish shores (drownings) are not included.  Causes of death are defined according to the International Statistical Classification of Diseases and Related Health Problems (ICD-10) and basic categories are Diseases of the Circulatory System, Diseases of the Respiratory System, Neoplasms, Infectious and Parasitic Diseases, Violent deaths and other causes, Covid-19 included.
<b>Methodology</b>	Data on deaths and vital statistics undergo the necessary quality checks, are processed, and presented in the form of tables.
<b>Geographical classification</b>	Geographical classification is based on the Nomenclature of Territorial Units for Statistics (NUTS). Data are disseminated at Country and Region (NUTS2) level.

**Map of the Regions (NUTS2) of Greece**



**International  
Standard of  
Dates**

According to the international standard ISO 8601 the first seventeen (17) weeks for 2021 and 2022 are defined as follows:

WEEK	2021	2022
1 <sup>st</sup>	4/1/2021 - 10/1/2021	03/01/2022 - 9/1/2022
2 <sup>nd</sup>	11/1/2021 - 17/1/2021	10/01/2022 - 16/1/2022
3 <sup>rd</sup>	18/1/2021 - 24/1/2021	17/01/2022 - 23/1/2022
4 <sup>th</sup>	25/1/2021 - 31/1/2021	24/01/2022 - 30/1/2022
5 <sup>th</sup>	1/2/2021 - 7/2/2021	31/01/2022 - 6/2/2022
6 <sup>th</sup>	8/2/2021 - 14/2/2021	7/2/2022 - 13/2/2022
7 <sup>th</sup>	15/2/2021 - 21/2/2021	14/2/2022 - 20/2/2022
8 <sup>th</sup>	22/2/2021 - 28/2/2021	21/2/2022 - 27/2/2022
9 <sup>th</sup>	1/3/2021 - 7/3/2021	28/2/2022 - 6/3/2022
10 <sup>th</sup>	8/3/2021 - 14/3/2021	7/3/2022 - 13/3/2022
11 <sup>th</sup>	15/3/2021 - 21/3/2021	14/3/2022 - 20/3/2022
12 <sup>th</sup>	22/3/2021 - 28/3/2021	21/3/2022 - 27/3/2022
13 <sup>th</sup>	29/3/2021 - 4/4/2021	28/3/2022 - 3/4/2022
14 <sup>th</sup>	5/4/2021 - 11/4/2021	4/4/2022 - 10/4/2022
15 <sup>th</sup>	12/4/2021 - 18/4/2021	11/4/2022 - 17/4/2022
16 <sup>th</sup>	19/4/2021 - 25/4/2021	18/4/2022 - 24/4/2022
17 <sup>th</sup>	26/4/2021 - 2/5/2021	25/4/2022 - 1/5/2022

**References:** More information (tables, graphs, methodology) is available on the website of ELSTAT: <https://www.statistics.gr>, at the link Statistics, Population and Social Conditions, Demography.