



INDUSTRIAL PRODUCTION INDEX: March 2025, y-o-y increase of 1.7%

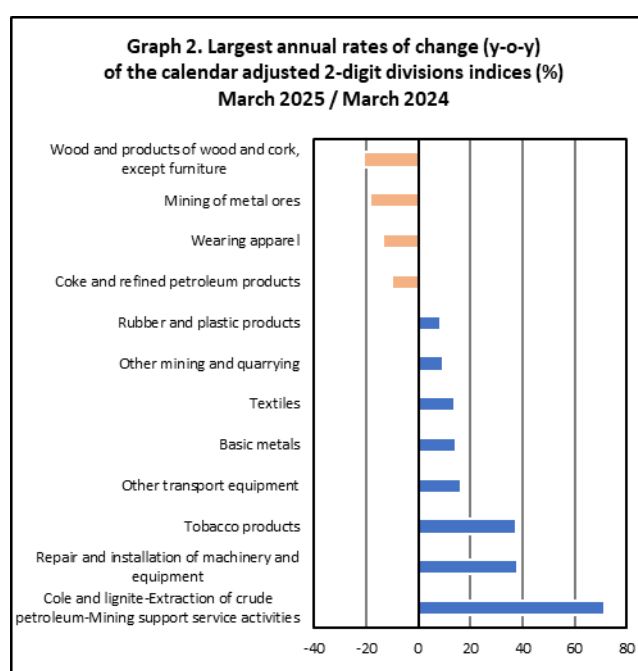
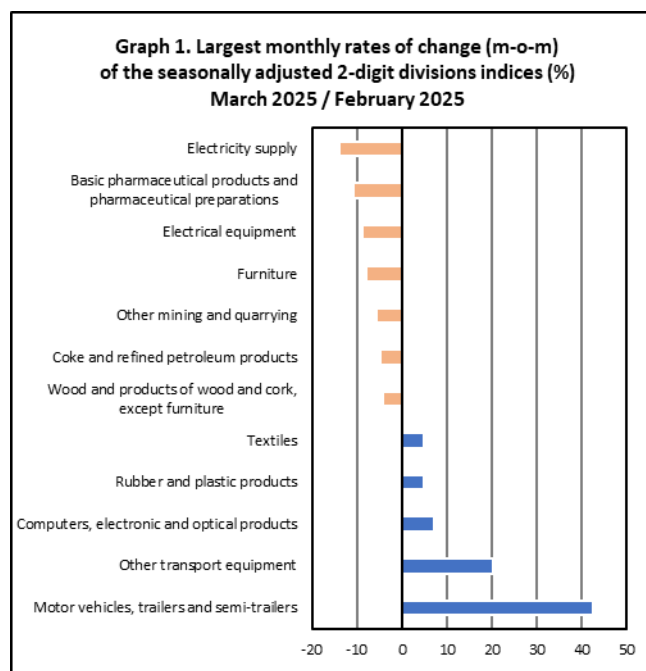
The Hellenic Statistical Authority announces the Industrial Production Index (IPI) with base year 2015=100.0 for March 2025, the evolution of which, on the basis of provisional and working day adjusted data, is as follows:

The Overall Industrial Production Index in March 2025 recorded an increase of 1.7% compared with March 2024. The Overall IPI in March 2024 decreased by 0.6% compared with the corresponding index in March 2023 (Table 1).

The average Overall Industrial Production Index for the period from January to March 2025 recorded an increase of 3.0% compared with the average IPI of the period from January to March 2024 (Table 2).

The seasonally adjusted Overall Industrial Production Index in March 2025 recorded a decrease of 4.5% compared with the corresponding index of February 2025 (Table 4).

The index of electricity supply division showed the greatest percentage decrease, whereas the index of motor vehicles, trailers and semi-trailers division recorded the greatest percentage increase in March 2025 compared with February 2025. Comparing the indices of March 2025 with the corresponding indices of March 2024, the greatest percentage increase was recorded in mining of coal and lignite – extraction of crude petroleum and natural gas – mining support service activities divisions, while the highest percentage decrease was recorded in wood and products of wood and cork, except furniture division (Tables 1 and 4).



Information on methodological issues:

Business Statistics Division
Manufacture-Construction Indices and Industrial Products Section
Head of the Section: Vlachokosta Evridiki
Tel: +30 213 135 2056
E-mail: e.vlachokosta@statistics.gr

Information on data provision:

Tel: +30 213 135 2024, 2308, 2310
E-mail: data.dissem@statistics.gr

Evolution of the Industrial Production Index in March 2025

I. Annual changes: March 2025 / March 2024 (Table 1)

The 1.7% increase of the working day adjusted Overall IPI in March 2025, compared with the corresponding index in March 2024, is due to the annual changes of the sub-indices in the following industrial sections:

Increase of:

- 1.9% in the Manufacturing Index. The increase was mainly the result of the annual changes of the sub-indices in the following 2-digit divisions: repair and installation of machinery and equipment, tobacco products, other transport equipment, basic metals, textiles.
- 1.7% in the Water Supply Index.
- 1.5% in the Mining and Quarrying Index. The increase was the result of the annual changes of the sub-indices in the following 2-digit divisions: mining of coal and lignite – extraction of crude petroleum and natural gas – mining support service activities, other mining and quarrying.
- 0.6% in the Electricity Supply Index.

II. Rates of change of the average index of the period January - March 2025 compared with the corresponding index of the period January - March 2024 (Table 2)

The 3.0% increase of the working day adjusted average Overall IPI in the 3-month period January - March 2025, compared with the corresponding index in January - March 2024, is due to the corresponding rates of change of the sub-indices in the following industrial sections:

Increase of:

- 11.4% in the Electricity Supply Index.
- 2.8% in the Water Supply Index.
- 1.0% in the Mining and Quarrying Index.
- 1.0% in the Manufacturing Index.

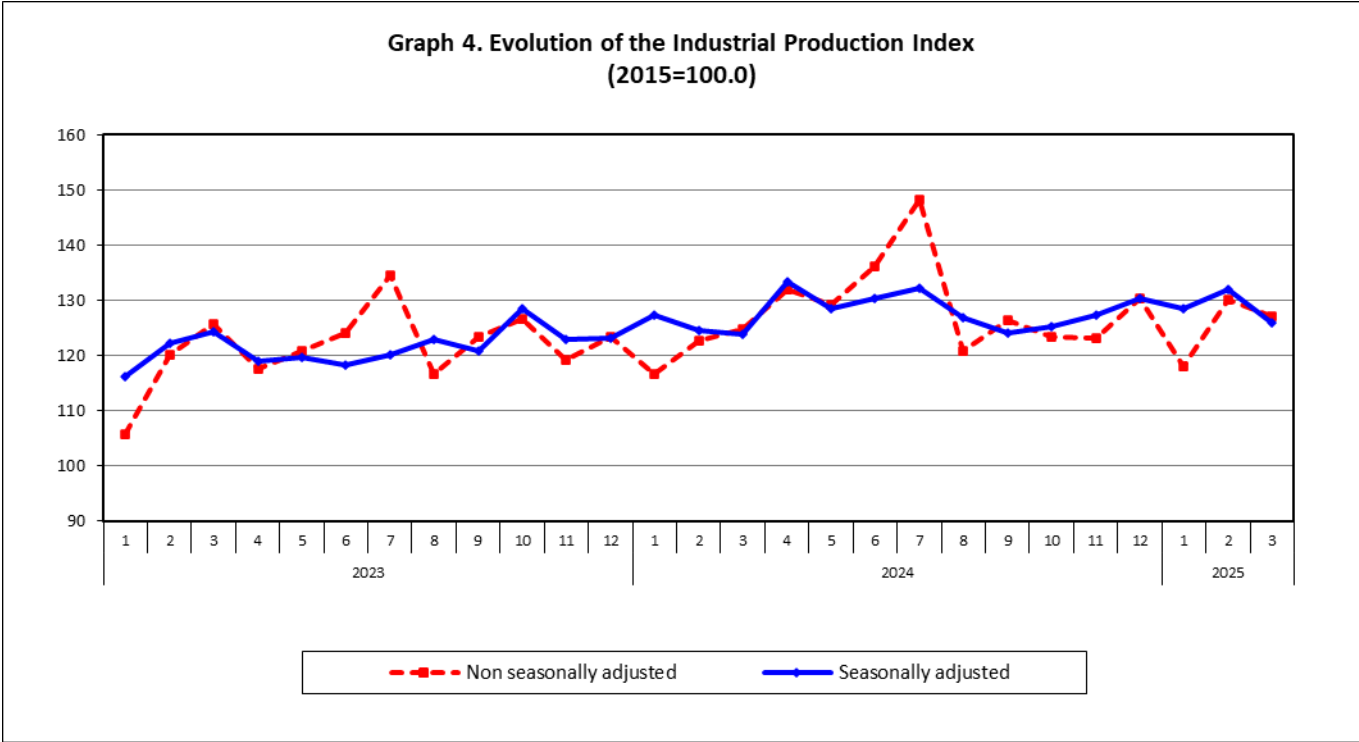
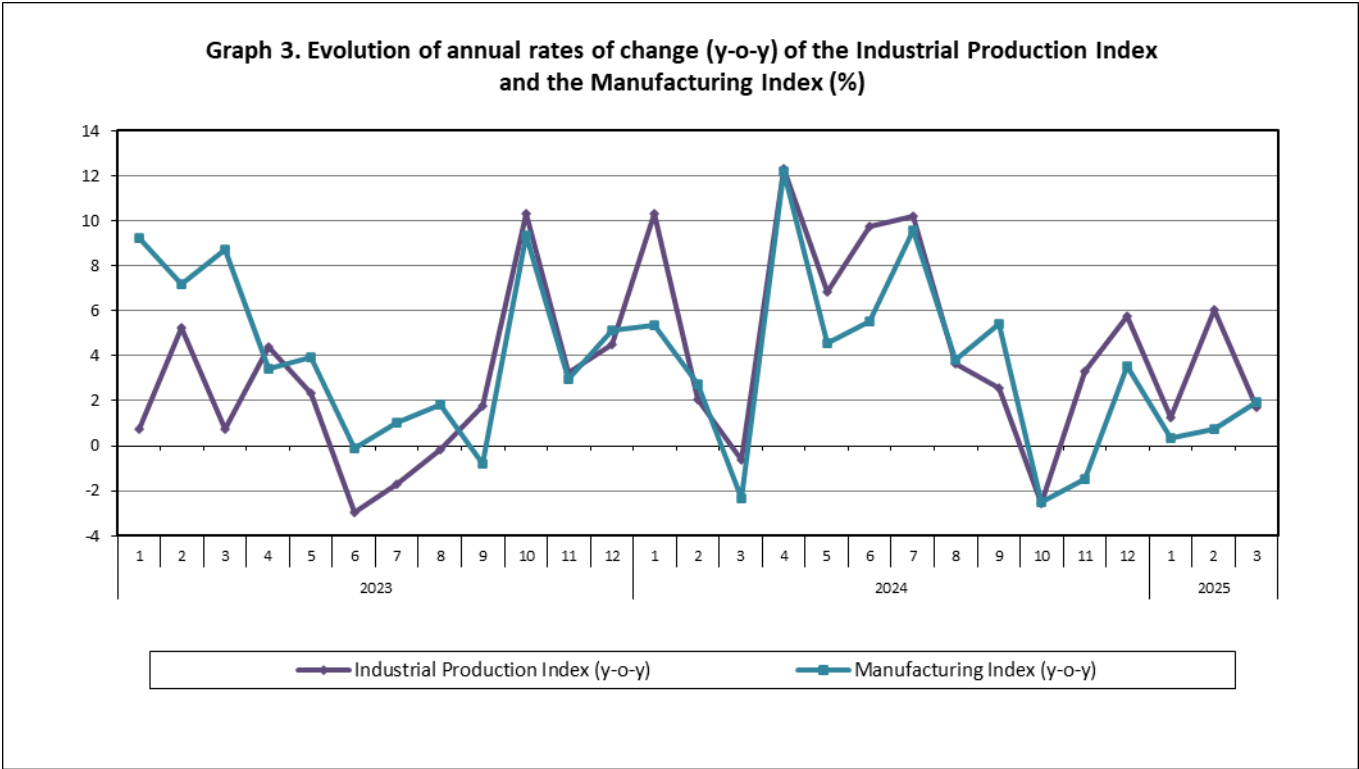
III. Monthly changes: March 2025 / February 2025 (Table 4)

The 4.5% decrease of the seasonally adjusted Overall IPI in March 2025, compared with the corresponding index in February 2025, is due to the monthly changes of the sub-indices in the following industrial sections:

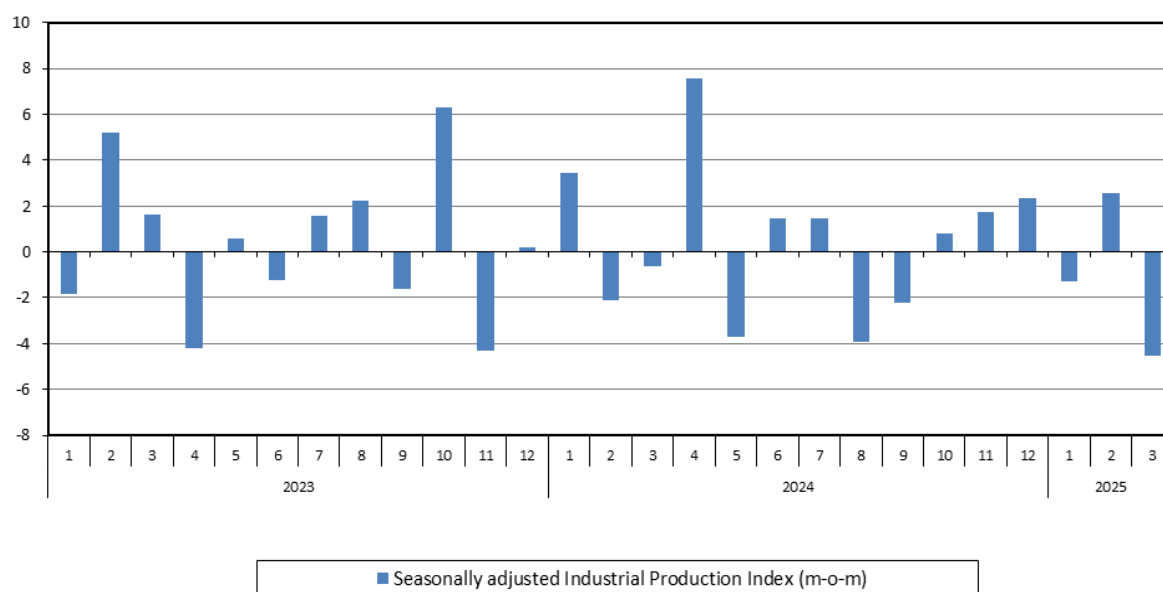
Decrease of:

- 14.0% in the Electricity Supply Index.
- 2.6% in the Mining and Quarrying Index.
- 1.7% in the Manufacturing Index.
- 1.0% in the Water Supply Index.

The following graphs depict the annual rates of change (y-o-y) of the Industrial Production Index and the Manufacturing Index, the evolution of the seasonally and non-seasonally adjusted Overall Industrial Production Index, as well as the monthly rates of change (m-o-m) of the seasonally adjusted index.



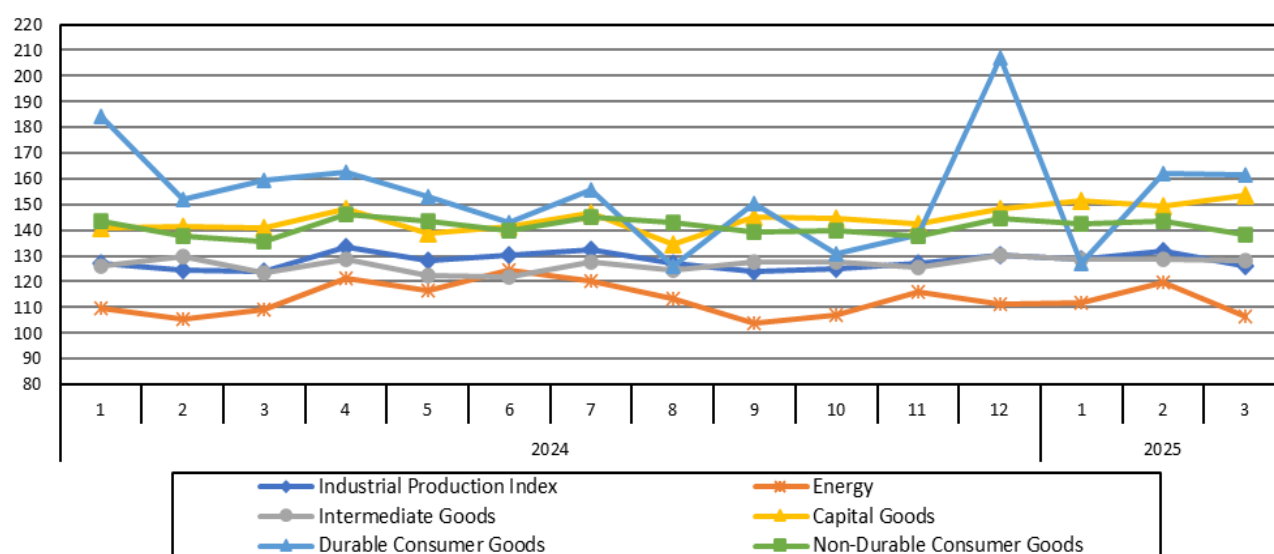
Graph 5. Evolution of the monthly rates of change (m-o-m) of the seasonally adjusted Industrial Production Index (%)



It should be noted that the time series with the seasonally adjusted indices is recalculated every time a new observation is added in the time series. Therefore, the seasonally adjusted data differ from the data published in the previous Announcement.

The following graphs depict the evolution of the seasonally adjusted Industrial Production Index and the Main Industrial Groupings, as well as the evolution of the Industrial Production Index and the Industrial Sections Indices.

Graph 6. Evolution of the seasonally adjusted Industrial Production Index and the Main Industrial Groupings Indices, January 2024 - March 2025 (2015=100.0)



**Graph 7. Evolution of the Industrial Production Index and the Industrial Section Indices
(2015=100.0)**

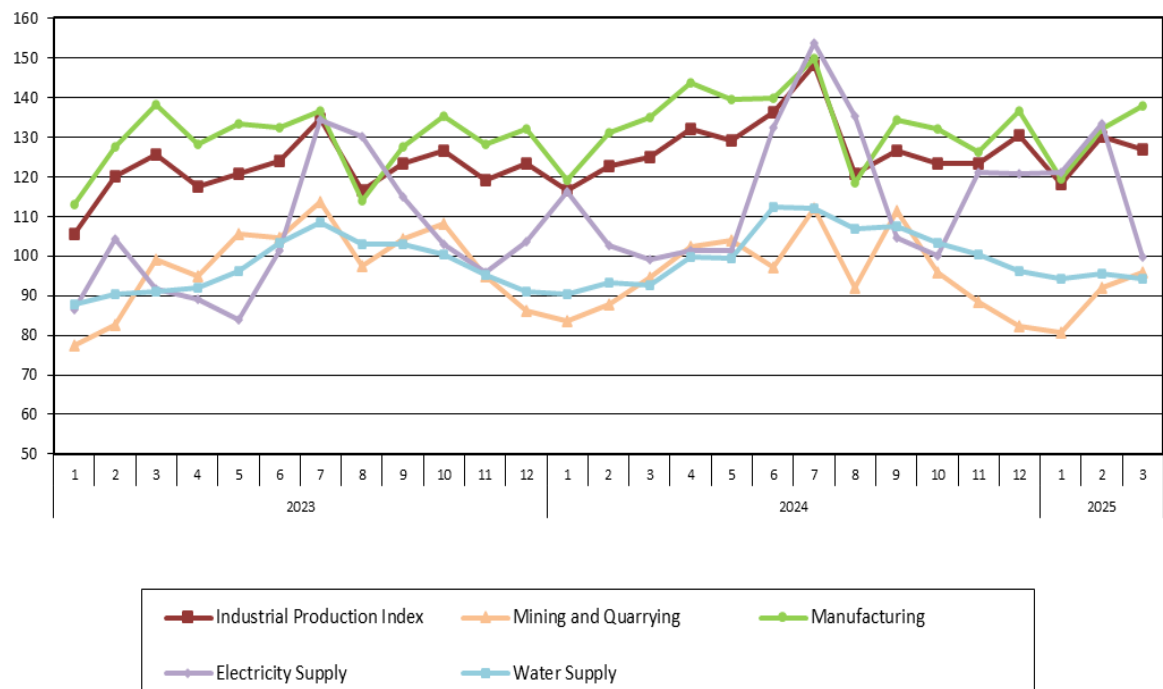


Table 1. Annual rates of change of the Industrial Production Index*(Working day adjusted data, according to the real number of working days)***Base year: 2015=100.0**

Code		Division	March			Rate of change (%)	
			2025*	2024*	2023	2025/2024	2024/2023
OVERALL INDEX			126.98	124.87	125.66	1.7	-0.6
B	MINING AND QUARRYING		95.90	94.46	99.20	1.5	-4.8
05-06-09	Mining of coal and lignite – Extraction of crude petroleum and natural gas – Mining support service activities		30.48	17.78	26.70	71.4	-33.4
07	Mining of metal ores		108.99	134.02	139.87	-18.7	-4.2
08	Other mining and quarrying		101.01	92.12	95.87	9.7	-3.9
C	MANUFACTURING		137.69	135.09	138.29	1.9	-2.3
10	Food		122.40	119.62	116.95	2.3	2.3
11	Beverages		103.89	98.09	103.82	5.9	-5.5
12	Tobacco products		189.76	137.80	155.30	37.7	-11.3
13	Textiles		126.19	110.77	130.84	13.9	-15.3
14	Wearing apparel		65.53	75.72	87.48	-13.5	-13.4
15	Leather and related products		115.07	122.43	122.03	-6.0	0.3
16	Wood and products of wood and cork, except furniture		104.82	132.77	124.79	-21.0	6.4
17	Paper and paper products		118.06	111.68	126.70	5.7	-11.9
18	Printing and reproduction of recorded products		143.48	139.10	145.92	3.2	-4.7
19	Coke and refined petroleum products		98.62	109.55	118.09	-10.0	-7.2
20	Chemicals and chemical products		151.43	150.94	147.97	0.3	2.0
21	Basic pharmaceutical products and pharmaceutical preparations		253.50	271.00	302.48	-6.5	-10.4
22	Rubber and plastic products		147.59	135.80	136.85	8.7	-0.8
23	Other non-metallic mineral products		147.99	150.49	146.01	-1.7	3.1
24	Basic metals		159.96	139.66	142.16	14.5	-1.8
25	Fabricated metal products, except machinery and equipment		152.19	149.62	145.38	1.7	2.9
26	Computers, electronic and optical products		312.45	303.95	252.42	2.8	20.4
27	Electrical equipment		159.43	156.43	148.22	1.9	5.5
28	Machinery and equipment n. e. c.		140.62	136.40	150.35	3.1	-9.3
29	Motor vehicles, trailers and semi-trailers		161.84	161.57	150.69	0.2	7.2
30	Other transport equipment		76.67	65.77	71.50	16.6	-8.0
31	Furniture		151.64	165.08	172.72	-8.1	-4.4
32	Other manufacturing		126.94	126.12	132.46	0.7	-4.8
33	Repair and installation of machinery and equipment		159.70	115.45	113.71	38.3	1.5
D	ELECTRICITY SUPPLY		99.60	99.01	91.54	0.6	8.2
35	Electricity supply		99.60	99.01	91.54	0.6	8.2
E	WATER SUPPLY		94.11	92.52	90.87	1.7	1.8
36	Water collection, treatment and supply		94.11	92.52	90.87	1.7	1.8
MAIN INDUSTRIAL GROUPINGS							
1	Energy		98.62	101.49	99.76	-2.8	1.7
2	Intermediate goods		135.77	130.39	131.38	4.1	-0.7
3	Capital goods		166.06	150.94	150.94	10.0	0.0
4	Consumer Durables		183.23	176.13	149.00	4.0	18.2
5	Consumer Non-Durables		141.27	139.35	144.65	1.4	-3.7

* Provisional data

Note: The indices are rounded up to two decimal digits when published and percentage changes up to one decimal digit when published.

Table 2. Average indices of the period January – March and rates of change of the Industrial Production Index
(Working day adjusted data, according to the real number of working days)

Base year: 2015=100.0

Code		Division	Average indices of the period Jan.-Feb.			Rate of change (%)	
			2025*	2024*	2023	2025/2024	2024/2023
OVERALL INDEX			125.00	121.38	117.16	3.0	3.6
B	MINING AND QUARRYING		89.51	88.61	86.41	1.0	2.5
05-06-09	Mining of coal and lignite – Extraction of crude petroleum and natural gas – Mining support service activities		26.85	14.15	28.75	89.8	-50.8
07	Mining of metal ores		101.58	128.60	124.84	-21.0	3.0
08	Other mining and quarrying		94.57	85.79	81.67	10.2	5.1
C	MANUFACTURING		129.77	128.47	126.32	1.0	1.7
10	Food		118.19	112.84	109.73	4.7	2.8
11	Beverages		91.51	90.05	87.05	1.6	3.4
12	Tobacco products		181.44	150.01	141.83	21.0	5.8
13	Textiles		111.08	105.66	116.51	5.1	-9.3
14	Wearing apparel		61.24	68.35	80.06	-10.4	-14.6
15	Leather and related products		75.20	81.40	88.75	-7.6	-8.3
16	Wood and products of wood and cork, except furniture		98.74	109.39	104.27	-9.7	4.9
17	Paper and paper products		114.29	113.70	117.17	0.5	-3.0
18	Printing and reproduction of recorded products		136.67	135.14	127.89	1.1	5.7
19	Coke and refined petroleum products		106.62	115.14	118.11	-7.4	-2.5
20	Chemicals and chemical products		136.16	138.47	126.01	-1.7	9.9
21	Basic pharmaceutical products and pharmaceutical preparations		267.59	282.40	288.23	-5.2	-2.0
22	Rubber and plastic products		133.08	126.85	124.23	4.9	2.1
23	Other non-metallic mineral products		135.94	138.05	121.90	-1.5	13.3
24	Basic metals		150.39	132.51	134.68	13.5	-1.6
25	Fabricated metal products, except machinery and equipment		128.74	133.05	123.26	-3.2	7.9
26	Computers, electronic and optical products		241.61	273.21	253.65	-11.6	7.7
27	Electrical equipment		149.70	142.84	135.58	4.8	5.4
28	Machinery and equipment n. e. c.		122.49	116.86	125.88	4.8	-7.2
29	Motor vehicles, trailers and semi-trailers		118.21	118.58	147.56	-0.3	-19.6
30	Other transport equipment		49.07	54.17	48.53	-9.4	11.6
31	Furniture		123.83	130.11	129.84	-4.8	0.2
32	Other manufacturing		115.36	112.11	121.58	2.9	-7.8
33	Repair and installation of machinery and equipment		127.18	90.69	91.34	40.2	-0.7
D	ELECTRICITY SUPPLY		118.01	105.94	94.13	11.4	12.5
35	Electricity supply		118.01	105.94	94.13	11.4	12.5
E	WATER SUPPLY		94.55	92.02	89.60	2.8	2.7
36	Water collection, treatment and supply		94.55	92.02	89.60	2.8	2.7
MAIN INDUSTRIAL GROUPINGS							
1	Energy		111.88	107.23	101.17	4.3	6.0
2	Intermediate goods		125.80	123.59	118.30	1.8	4.5
3	Capital goods		136.87	126.56	127.40	8.1	-0.7
4	Consumer Durables		135.17	141.01	119.14	-4.1	18.3
5	Consumer Non-Durables		136.60	134.38	132.79	1.6	1.2

* Provisional data

Notes: 1. The indices are rounded up to two decimal digits when published and percentage changes up to one decimal digit when published.
2. The Index of February 2025 is revised (subsequently so is the average), compared to the respective one published the previous month, due to the incorporation of modified data in its calculation.
3. Updated deflators have been used in the calculation of indices of January 2025. The change of the indices partly reflects the changes of the deflators.

Table 3. Monthly rate of change of the Industrial Production Index*(Working day adjusted data, according to the real number of working days)***Base year: 2015=100.0**

Code	Division	March 2025*	February 2025*	Rate of change (%) Mar. 2025/Feb. 2025
OVERALL INDEX		126.98	130.03	-2.3
B	MINING AND QUARRYING	95.90	92.05	4.2
05-06-09	Mining of coal and lignite – Extraction of crude petroleum and natural gas – Mining support service activities	30.48	25.88	17.79
07	Mining of metal ores	108.99	102.93	5.9
08	Other mining and quarrying	101.01	98.03	3.0
C	MANUFACTURING	137.69	132.08	4.3
10	Food	122.40	120.02	2.0
11	Beverages	103.89	94.01	10.5
12	Tobacco products	189.76	185.07	2.5
13	Textiles	126.19	105.28	19.9
14	Wearing apparel	65.53	60.94	7.5
15	Leather and related products	115.07	69.67	65.2
16	Wood and products of wood and cork, except furniture	104.82	92.88	12.9
17	Paper and paper products	118.06	115.97	1.8
18	Printing and reproduction of recorded products	143.48	133.97	7.1
19	Coke and refined petroleum products	98.62	106.48	-7.4
20	Chemicals and chemical products	151.43	137.27	10.3
21	Basic pharmaceutical products and pharmaceutical preparations	253.50	284.74	-11.0
22	Rubber and plastic products	147.59	130.53	13.1
23	Other non-metallic mineral products	147.99	138.85	6.6
24	Basic metals	159.96	151.40	5.7
25	Fabricated metal products, except machinery and equipment	152.19	129.36	17.6
26	Computers, electronic and optical products	312.45	277.71	12.5
27	Electrical equipment	159.43	165.48	-3.7
28	Machinery and equipment n. e. c.	140.62	135.11	4.1
29	Motor vehicles, trailers and semi-trailers	161.84	101.67	59.2
30	Other transport equipment	76.67	42.04	82.4
31	Furniture	151.64	135.96	11.5
32	Other manufacturing	126.94	115.37	10.0
33	Repair and installation of machinery and equipment	159.70	113.68	40.5
D	ELECTRICITY SUPPLY	99.60	133.34	-25.3
35	Electricity supply	99.60	133.34	-25.3
E	WATER SUPPLY	94.11	95.38	-1.3
36	Water collection, treatment and supply	94.11	95.38	-1.3
MAIN INDUSTRIAL GROUPINGS				
1	Energy	98.62	120.82	-18.4
2	Intermediate goods	135.77	127.70	6.3
3	Capital goods	166.06	136.99	21.2
4	Consumer Durables	183.23	147.34	24.4
5	Consumer Non-Durables	141.27	140.26	0.7

* Provisional data

Notes: 1. The indices are rounded up to two decimal digits when published and percentage changes up to one decimal digit when published.

2. The Index of February 2025 is revised, compared to the respective one published the previous month, due to the incorporation of modified data in its calculation.

Table 4. Monthly rate of change of the seasonally adjusted Industrial Production Index

Base year: 2015=100.0

Code	Division	March 2025	February 2025	Rate of change (%) Mar. 2025 / Feb. 2025
OVERALL INDEX		125.90	131.90	-4.5
B	MINING AND QUARRYING	100.53	103.22	-2.6
05-06-09	Mining of coal and lignite – Extraction of crude petroleum and natural gas – Mining support service activities	-	-	-
07	Mining of metal ores	107.19	109.28	-1.9
08	Other mining and quarrying	110.88	117.38	-5.5
C	MANUFACTURING	132.62	134.90	-1.7
10	Food	123.21	125.50	-1.8
11	Beverages	108.30	108.16	0.1
12	Tobacco products	185.62	180.35	2.9
13	Textiles	117.04	111.62	4.9
14	Wearing apparel	61.14	60.72	0.7
15	Leather and related products	83.54	80.50	3.8
16	Wood and products of wood and cork, except furniture	93.34	97.35	-4.1
17	Paper and paper products	117.60	113.71	3.4
18	Printing and reproduction of recorded products	137.16	138.12	-0.7
19	Coke and refined petroleum products	99.55	104.57	-4.8
20	Chemicals and chemical products	132.32	133.33	-0.8
21	Basic pharmaceutical products and pharmaceutical preparations	247.84	277.28	-10.6
22	Rubber and plastic products	134.12	127.72	5.0
23	Other non-metallic mineral products	140.77	146.62	-4.0
24	Basic metals	147.66	146.01	1.1
25	Fabricated metal products, except machinery and equipment	143.29	140.11	2.3
26	Computers, electronic and optical products	270.33	251.92	7.3
27	Electrical equipment	149.17	163.64	-8.8
28	Machinery and equipment n. e. c.	130.50	134.04	-2.6
29	Motor vehicles, trailers and semi-trailers	169.57	118.94	42.6
30	Other transport equipment	74.12	61.66	20.2
31	Furniture	139.17	151.08	-7.9
32	Other manufacturing	136.08	135.91	0.1
33	Repair and installation of machinery and equipment	142.65	137.75	3.6
D	ELECTRICITY SUPPLY	111.91	130.09	-14.0
35	Electricity supply	111.91	130.09	-14.0
E	WATER SUPPLY	101.18	102.23	-1.0
36	Water collection, treatment and supply	101.18	102.23	-1.0
MAIN INDUSTRIAL GROUPINGS				
1	Energy	106.48	119.53	-10.9
2	Intermediate goods	128.29	128.52	-0.2
3	Capital goods	153.70	149.32	2.9
4	Consumer Durables	161.78	161.90	-0.1
5	Consumer Non-Durables	138.38	143.37	-3.5

Notes:

1. The indices are rounded up to two decimal digits when published and percentage changes up to one decimal digit when published.
2. The whole time-series with seasonally adjusted indices is recalculated every time a new observation is added in the time-series.
3. The composed index of divisions 05-06-09 is not seasonally adjusted.
4. The Index of February 2025 is revised, compared to the respective one published the previous month, due to the incorporation of modified data in its calculation.

Table 5. Evolution of the Overall Industrial Production Index

(Working day adjusted data, according to the real number of working days)

Base year: 2015=100.0

Year and month		Overall Index	Monthly rate of change (%)	Annual rate of change (%)	12-month average index (moving average)	Rate of change of the 12-month average index (%)
2023:	1	105.63	-10.5	0.7	118.83	2.5
	2	120.18	13.8	5.3	119.33	2.5
	3	125.66	4.6	0.7	119.41	1.8
	4	117.60	-6.4	4.4	119.82	2.5
	5	120.86	2.8	2.3	120.05	2.4
	6	124.05	2.6	-3.0	119.73	1.3
	7	134.56	8.5	-1.7	119.54	0.5
	8	116.61	-13.3	-0.2	119.53	0.1
	9	123.27	5.7	1.8	119.71	0.4
	10	126.57	2.7	10.3	120.70	1.4
	11	119.19	-5.8	3.3	121.01	1.8
	12	123.30	3.4	4.5	121.46	2.3
Annual average		121.46				
2024*:	1	116.56	-5.5	10.3	122.37	3.0
	2	122.64	5.2	2.1	122.57	2.7
	3	124.87	1.8	-0.6	122.51	2.6
	4	132.08	5.8	12.3	123.71	3.2
	5	129.14	-2.2	6.8	124.40	3.6
	6	136.13	5.4	9.7	125.41	4.7
	7	148.32	9.0	10.2	126.56	5.9
	8	120.85	-18.5	3.6	126.91	6.2
	9	126.42	4.6	2.6	127.17	6.2
	10	123.34	-2.4	-2.6	126.90	5.1
	11	123.15	-0.2	3.3	127.23	5.1
	12	130.42	5.9	5.8	127.83	5.2
Annual average		127.83				
2025*:	1	118.00	-9.5	1.2	127.95	4.6
	2	130.03	10.2	6.0	128.56	4.9
	3	126.98	-2.3	1.7	128.74	5.1

* Provisional data

Notes: 1. The indices are rounded up to two decimal digits when published and percentage changes up to one decimal digit when published.

2. The Index of February 2025 is revised, compared to the respective one published the previous month, due to the incorporation of modified data in its calculation.

3. Updated deflators have been used in the calculation of indices of January 2025. The change of the indices partly reflects the changes of the deflators.

Table 6. Monthly evolution of the seasonally adjusted Overall Industrial Production Index and Main Industrial Groupings

Base year: 2015=100.0

Year and month		Overall Index		Energy		Intermediate goods		Capital goods		Consumer durables		Consumer non-durables	
		Index	Monthly rate of change (%)	Index	Monthly rate of change (%)	Index	Monthly rate of change (%)	Index	Monthly rate of change (%)	Index	Monthly rate of change (%)	Index	Monthly rate of change (%)
2023:	1	116.26	-1.8	91.67	-9.7	120.37	0.4	142.35	6.2	141.23	-8.4	134.65	2.1
	2	122.31	5.2	107.64	17.4	118.13	-1.9	143.73	1.0	141.49	0.2	136.67	1.5
	3	124.29	1.6	107.26	-0.3	124.10	5.1	141.82	-1.3	139.56	-1.4	139.62	2.2
	4	119.06	-4.2	107.66	0.4	118.18	-4.8	131.24	-7.5	139.29	-0.2	129.27	-7.4
	5	119.75	0.6	99.36	-7.7	119.97	1.5	146.72	11.8	139.51	0.2	136.12	5.3
	6	118.29	-1.2	95.72	-3.7	119.82	-0.1	142.70	-2.7	146.54	5.0	136.51	0.3
	7	120.17	1.6	108.45	13.3	115.87	-3.3	132.31	-7.3	143.46	-2.1	133.28	-2.4
	8	122.83	2.2	109.85	1.3	119.35	3.0	146.04	10.4	143.38	-0.1	134.07	0.6
	9	120.84	-1.6	110.96	1.0	114.29	-4.2	138.48	-5.2	153.58	7.1	131.55	-1.9
	10	128.42	6.3	113.08	1.9	123.83	8.4	145.94	5.4	162.83	6.0	144.16	9.6
	11	122.86	-4.3	104.58	-7.5	122.28	-1.3	148.89	2.0	168.25	3.3	136.22	-5.5
	12	123.09	0.2	103.08	-1.4	126.48	3.4	151.29	1.6	160.83	-4.4	135.29	-0.7
Annual average		121.52		104.94		120.22		142.63		148.33		135.62	
2024:	1	127.32	3.4	109.47	6.2	125.86	-0.5	140.64	-7.0	184.13	14.5	143.62	6.2
	2	124.65	-2.1	105.60	-3.5	129.89	3.2	141.58	0.7	152.24	-17.3	137.72	-4.1
	3	123.89	-0.6	109.38	3.6	123.17	-5.2	140.77	-0.6	159.23	4.6	135.75	-1.4
	4	133.29	7.6	121.28	10.9	128.58	4.4	148.18	5.3	162.71	2.2	146.03	7.6
	5	128.38	-3.7	116.47	-4.0	122.25	-4.9	138.98	-6.2	153.04	-5.9	143.48	-1.8
	6	130.24	1.4	124.59	7.0	121.93	-0.3	141.25	1.6	143.09	-6.5	139.96	-2.5
	7	132.16	1.5	120.35	-3.4	127.50	4.6	146.85	4.0	155.64	8.8	144.97	3.6
	8	126.94	-3.9	113.38	-5.8	124.54	-2.3	134.78	-8.2	126.19	-18.9	143.15	-1.3
	9	124.14	-2.2	103.73	-8.5	127.60	2.5	145.05	7.6	150.41	19.2	139.27	-2.7
	10	125.16	0.8	107.05	3.2	127.76	0.1	144.65	-0.3	130.97	-12.9	139.57	0.2
	11	127.30	1.7	115.88	8.3	125.51	-1.8	142.61	-1.4	138.19	5.5	137.91	-1.2
	12	130.29	2.3	111.35	-3.9	130.33	3.8	148.21	3.9	206.98	49.8	144.54	4.8
Annual average		127.81		113.21		126.24		142.79		155.23		141.33	
2025:	1	128.58	-1.3	111.97	0.6	128.66	-1.3	151.73	2.4	127.33	-38.5	142.54	-1.4
	2	131.90	2.6	119.53	6.7	128.52	-0.1	149.32	-1.6	161.90	27.2	143.37	0.6
	3	125.90	-4.5	106.48	-10.9	128.29	-0.2	153.70	2.9	161.78	-0.1	138.38	-3.5

Notes:

1. The indices are rounded up to two decimal digits when published and percentage changes up to one decimal digit when published.
2. The whole time-series with seasonally adjusted indices is recalculated every time a new observation is added in the time-series.
3. The Index of February 2025 is revised, compared to the respective one published the previous month, due to the incorporation of modified data in its calculation.
4. Updated deflators have been used in the calculation of indices of January 2025. The change of the indices partly reflects the changes of the deflators.

METHODOLOGICAL NOTES

Generally	The Industrial Production Index (IPI) in Greece has been compiled by the Hellenic Statistical Authority (ELSTAT) from 1959 onwards.
Purpose of the index	The objective of the index is to compare the magnitude (volume) of the output in the current month in the mining and quarrying, manufacturing, electricity and water supply divisions with the corresponding output of a given fixed period, which is considered as base period. The Industrial Production Index shows the evolution of the value added of the production factors cost, at constant prices.
Legal framework	The compilation of the IPI is based on the framework of the implementation of Council Regulation (EC) No 1165/1998 concerning short-term statistics (STS-R). Furthermore, the IPI is governed by Regulation (EC) No 1893/2006 of the European Parliament and of the Council, by Commission Regulation (EC) No 656/2007, by Council Regulation (EC) No 451/2008, by Regulation (EU) No 2019/2152 of the European Parliament and of the Council on European business statistics, as well as Commission Implementing Regulation (EU) No 2020/1197 laying down technical specifications and arrangements pursuant to Regulation (EU) No 2019/2152.
Reference period	Month.
Base year	2015=100.0.
Revision	The IPI is a fixed base index. The Industrial Production Index was currently revised with new base year 2015 (2015=100.0) according to the provisions of Council Regulation No 1165/1998 concerning short-term statistics. Short-term indices are revised every five (5) years, particularly in calendar years ending in 0 or 5.
Statistical classifications	At the level of branches of economic activities, the statistical classification of economic activities NACE Rev.2 of EU was used (Regulation No 1893/2006), while at the level of main industrial groupings, the allocation of two-digit and three-digit NACE Rev. 2 headings to categories of aggregate classification was used, in accordance with Council Regulation No 656/2007. At product level, the statistical classification CPA 2008 of EU was used, according to Council Regulation No 451/2008.
Geographical coverage	The index covers the whole Country.
Coverage of economic activities	The index covers all the sections of industry, the main industrial groups, as well as all levels of economic activity.
Statistical survey	The data are collected from a sample of 1,263 enterprises. The survey covers 325 products and the measurement of the surveyed products is made in terms of output quantities or in terms of production value or turnover, according to the specific features in each branch of economic activity.
Seasonal adjustment	Seasonal adjustment is the procedure followed to remove the impact of seasonality on the time-series (i.e. the impact of monthly effects, e.g. holidays, tourist period etc.), in order to improve comparability over time. The method applied is TRAMO-SEATS with the use of JDemetra+ 2.0.0. For the seasonal adjustment of the Industrial Production Index at 2-digit level of NACE Rev.2, at section level (B – Mining and Quarrying, C – Manufacturing, D – Electricity and E – Water Supply) and for the Main Industrial Groupings (MIGs), the direct approach is applied, namely each time-series is seasonally adjusted independently. For the overall Industrial Production Index, the indirect approach is applied, with the seasonally adjusted IPI being computed by aggregating the seasonally adjusted MIGs using appropriate weights.
Publication of data	The revised IPI with the new base year 2015 (2015=100.0) is released since July 2019, with May 2019 as the first reference month. Data with base year 2015=100.0 are available from January 2000 onwards.
References	More information about the methodology concerning the compilation and calculation of the index and the time series are available on the website of the Hellenic Statistical Authority (ELSTAT) (http://www.statistics.gr/en/statistics/-/publication/DKT21/-).