



PRESS RELEASE

INDUSTRIAL PRODUCTION INDEX: October 2020, y-o-y decrease of 3.7%

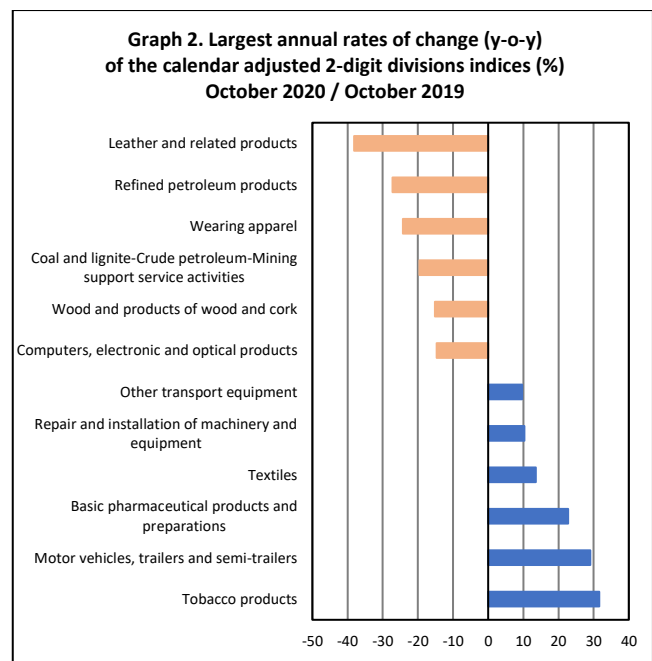
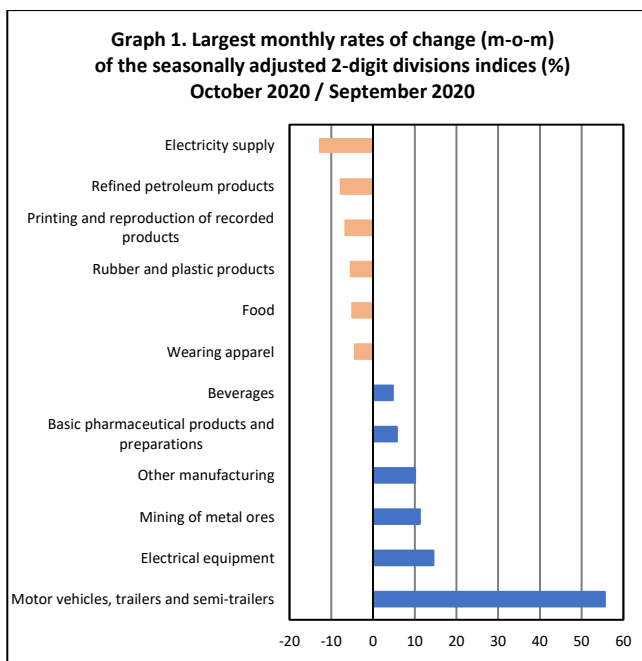
The Hellenic Statistical Authority announces the Industrial Production Index (IPI) with base year 2015=100.0 for October 2020, on the basis of provisional and working day adjusted data, as follows:

The Overall Industrial Production Index in October 2020 recorded a decrease of 3.7% compared with October 2019. The Overall IPI in October 2019 decreased by 0.7% compared with the corresponding index in October 2018 (Table 1).

The average Overall Industrial Production Index for the period from January to October 2020 recorded a decrease of 3.7% compared with the average IPI of the period from January to October 2019 (Table 2).

The seasonally adjusted Overall Industrial Production Index in October 2020 recorded a decrease of 3.1% compared with the corresponding index of September 2020 (Table 4).

The index of electricity supply division recorded the greatest percentage decrease, whereas the index of motor vehicles, trailers and semi-trailers division showed the greatest percentage increase in October 2020 compared with September 2020. Comparing the indices of October 2020 with the corresponding indices of October 2019, the strongest decline was recorded in leather and related products, while the greatest increase was recorded in tobacco products (Tables 1 and 4).



Information for methodological issues:

Business Statistics Division
Manufacture-Construction Indices and Industrial Products Section
Head of the Section: Diamantaki Aikaterini
Tel: +30 213 135 2056
Fax: +30 213 135 2506
E-mail: a.diamantaki@statistics.gr

Information for data provision:

Tel: +30 213 135 2022, 2308, 2310
E-mail: data.dissem@statistics.gr

Evolution of the Industrial Production Index in October 2020

I. Annual changes: October 2020/ October 2019 (Table 1)

The 3.7% decrease of the working day adjusted Overall IPI in October 2020, compared with the corresponding index in October 2019, is due to the annual changes of the sub-indices in the following industrial sections:

1. Decrease of:

- 3.8% in the Mining and Quarrying Index. The decrease was the result of the annual changes of the sub-indices in the following 2-digit divisions: mining of coal and lignite, extraction of crude petroleum and natural gas, mining support service activities, other mining and quarrying.
- 3.1% in the Manufacturing Index. The decrease was the result of the annual changes of the sub-indices in the following 2-digit divisions: wearing apparel, leather and related products, wood and products of wood and cork, coke and refined petroleum products, computers, electronic and optical products.
- 7.2% in the Electricity Supply Index.

2. Increase of:

- 0.7% in the Water Supply Index.

II. Rates of change of the average index in the period January – October 2020 compared with the corresponding index of the period January – October 2019 (Table 2)

The 3.7% decrease of the working day adjusted average Overall IPI in the 10-month period January – October 2020, compared with the corresponding index in January – October 2019, is due to the corresponding rates of change of the sub-indices in the following industrial sections:

1. Decrease of:

- 4.7% in the Mining and Quarrying Index.
- 2.7% in the Manufacturing Index.
- 8.0% in the Electricity Supply Index.

2. Increase of:

- 0.7% in the Water Supply Index.

III. Monthly changes: October 2020 / September 2020 (Table 4)

The 3.1% decrease of the seasonally adjusted Overall IPI in October 2020, compared with the corresponding index in September 2020 is due to the monthly changes of the sub-indices in the following industrial sections:

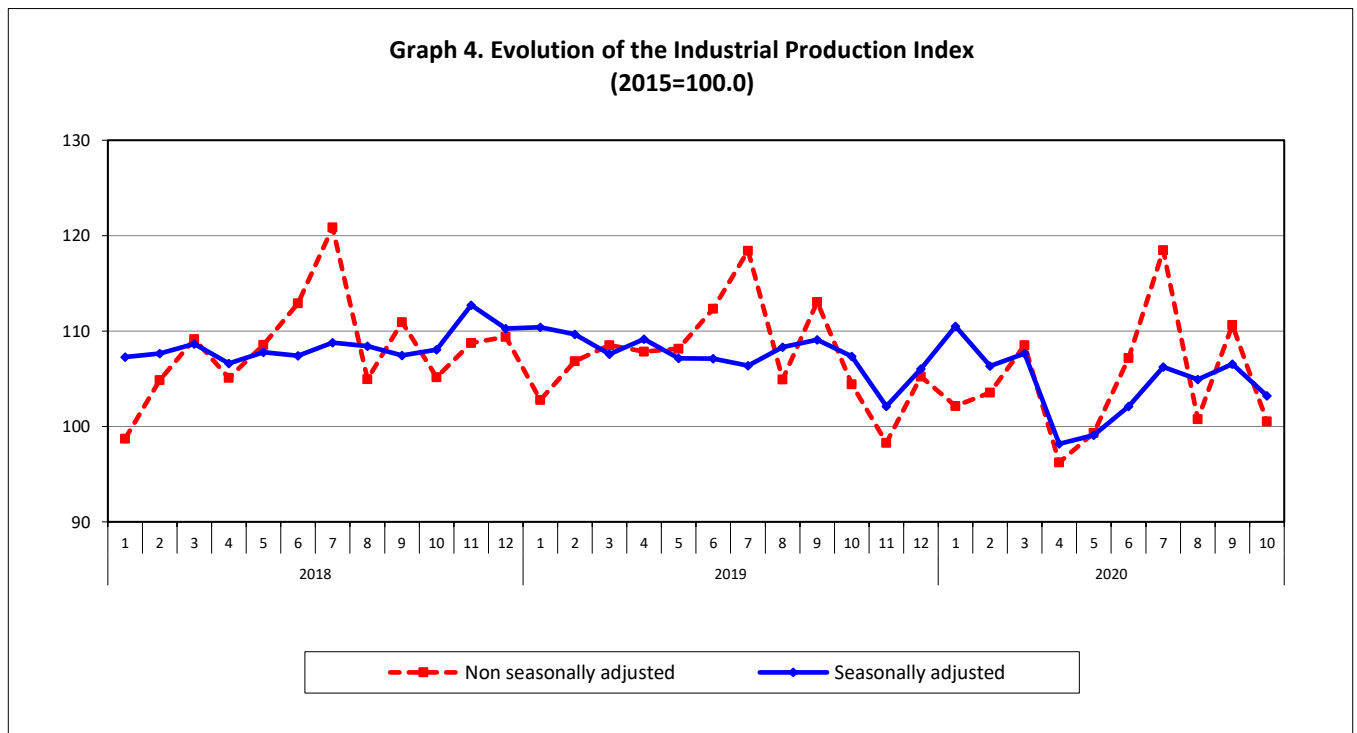
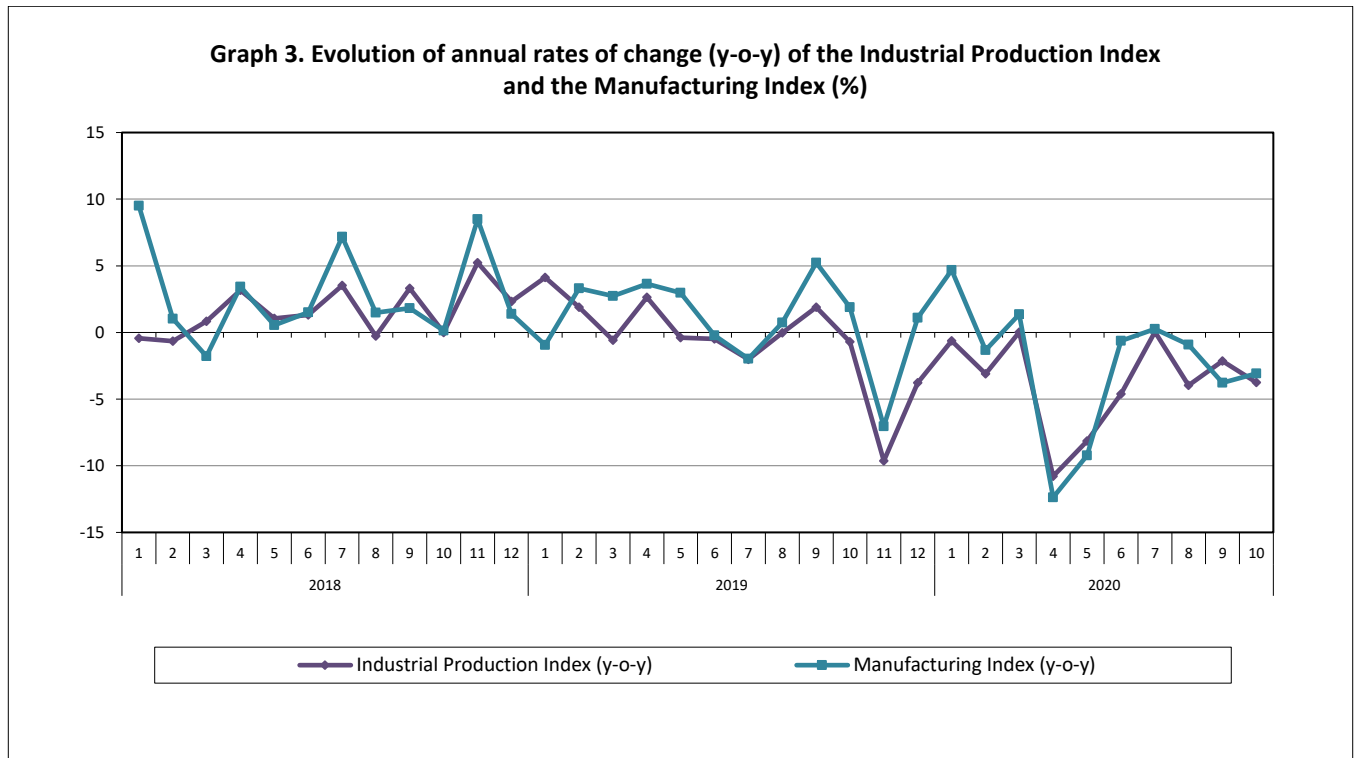
1. Decrease of:

- 0.9% in the Manufacturing Index.
- 12.9% in the Electricity Supply Index.

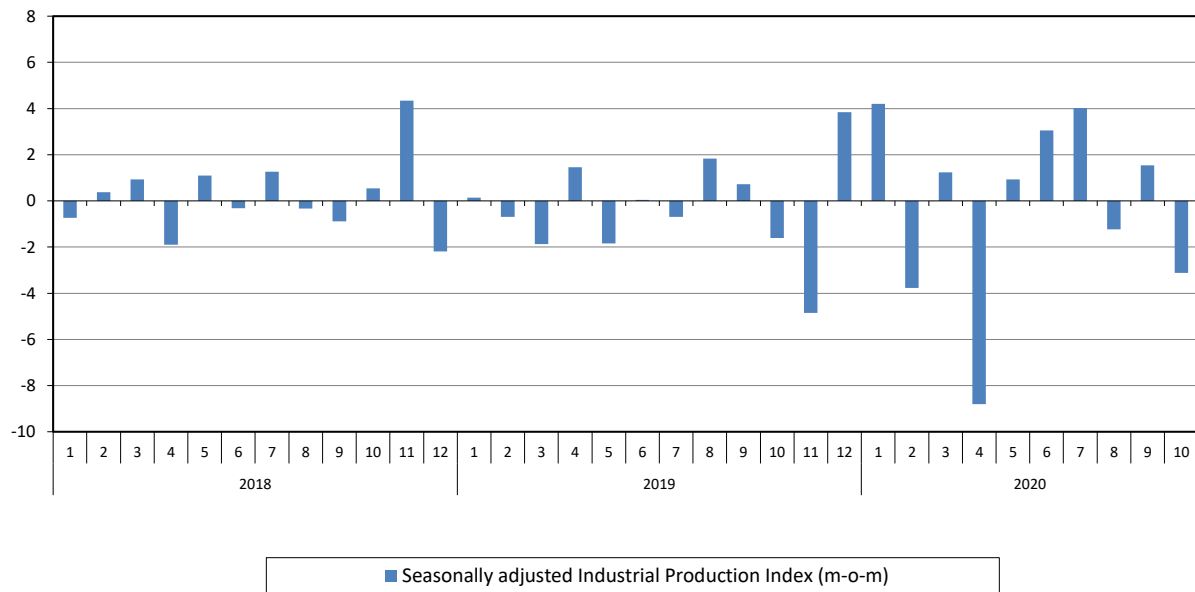
2. Increase of:

- 5.2% in the Mining and Quarrying Index.
- 1.0% in the Water Supply Index.

The following graphs depict the annual rates of change (y-o-y) of the Industrial Production Index and the Manufacturing Index, the evolution of the seasonally and non-seasonally adjusted Overall Industrial Production Index, as well as the monthly rates of change (m-o-m) of the seasonally adjusted index.



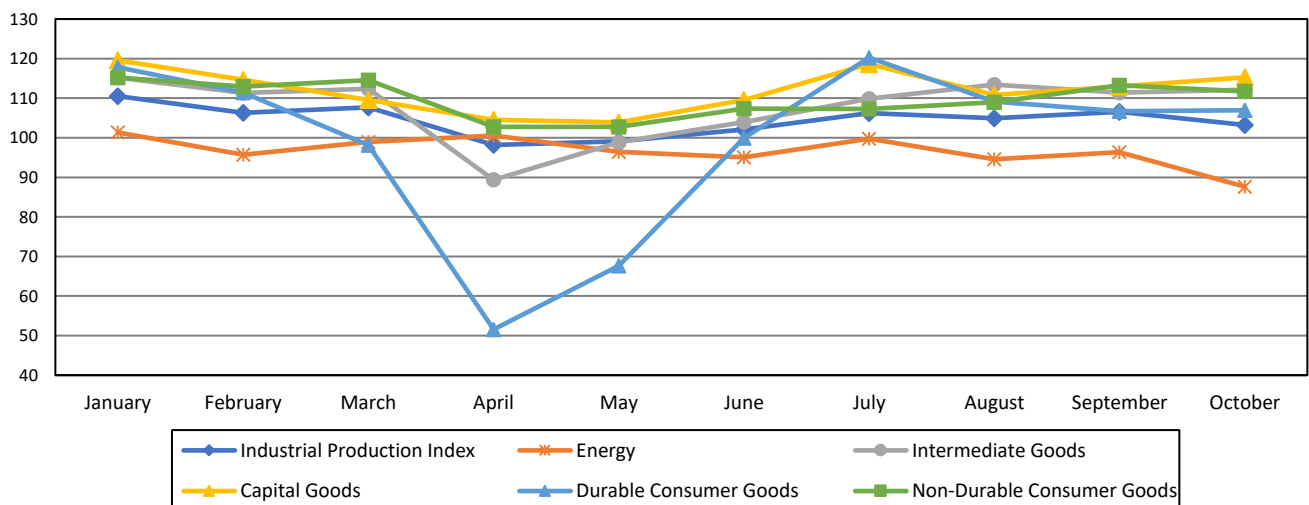
Graph 5. Evolution of the monthly rates of change (m-o-m) of the seasonally adjusted Industrial Production Index (%)



It should be noted that the time series with the seasonally adjusted indices is recalculated every time a new observation is added in the time series. Therefore, the seasonally adjusted data differ from the data published in the previous Press Release.

The following graphs depict the evolution of the seasonally adjusted Industrial Production Index and the Main Industrial Groupings, as well as the evolution of the Industrial Production Index and the Industrial Sections Indices.

Graph 6. Evolution of the seasonally adjusted Industrial Production Index and the Main Industrial Groupings, January - October 2020 (2015=100.0)



**Graph 7. Evolution of the Industrial Production Index and the Industrial Section Indices
(2015=100.0)**

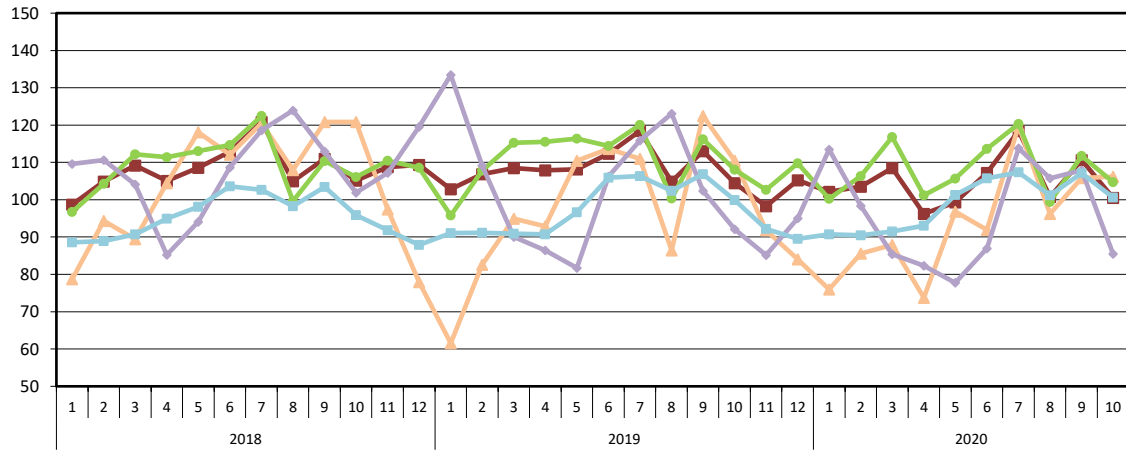


Table 1. Annual rates of change of the Industrial Production Index*(Working day adjusted data, according to the real number of working days)***Base year: 2015=100.0**

Code	Division	October			Rate of change (%)	
		2020*	2019	2018	2020/2019	2019/2018
OVERALL INDEX		100.52	104.43	105.16	-3.7	-0.7
B	MINING AND QUARRYING	106.21	110.44	120.87	-3.8	-8.6
05-06-09	Mining of coal and lignite – Extraction of crude petroleum and natural gas – Mining support service activities	36.43	45.28	87.46	-19.5	-48.2
07	Mining of metal ores	151.47	144.56	124.22	4.8	16.4
08	Other mining and quarrying	100.89	108.28	124.63	-6.8	-13.1
C	MANUFACTURING	104.73	108.06	106.06	-3.1	1.9
10	Food	89.90	96.02	95.79	-6.4	0.2
11	Beverages	77.23	80.47	75.92	-4.0	6.0
12	Tobacco products	121.77	92.53	131.76	31.6	-29.8
13	Textiles	126.68	111.56	108.18	13.6	3.1
14	Wearing apparel	75.17	99.22	100.83	-24.2	-1.6
15	Leather and related products	67.41	108.95	100.30	-38.1	8.6
16	Wood and products of wood and cork, except furniture	94.27	111.09	98.33	-15.1	13.0
17	Paper and paper products	106.16	103.65	97.26	2.4	6.6
18	Printing and reproduction of recorded products	101.58	110.56	98.74	-8.1	12.0
19	Coke and refined petroleum products	72.09	99.04	109.93	-27.2	-9.9
20	Chemicals and chemical products	122.61	130.82	117.75	-6.3	11.1
21	Basic pharmaceutical products and pharmaceutical preparations	203.13	165.49	136.98	22.7	20.8
22	Rubber and plastic products	113.31	119.05	107.98	-4.8	10.3
23	Other non-metallic mineral products	117.52	107.86	127.87	9.0	-15.7
24	Basic metals	133.27	136.16	130.83	-2.1	4.1
25	Fabricated metal products, except machinery and equipment	134.56	125.11	113.91	7.5	9.8
26	Computers, electronic and optical products	144.12	168.86	130.84	-14.7	29.1
27	Electrical equipment	113.73	106.70	81.06	6.6	31.6
28	Machinery and equipment n. e. c.	99.88	101.42	98.44	-1.5	3.0
29	Motor vehicles, trailers and semi-trailers	108.77	84.29	64.53	29.1	30.6
30	Other transport equipment	65.74	59.95	66.94	9.7	-10.4
31	Furniture	122.77	114.87	113.08	6.9	1.6
32	Other manufacturing	103.85	108.17	109.05	-4.0	-0.8
33	Repair and installation of machinery and equipment	79.85	72.39	71.92	10.3	0.7
D	ELECTRICITY SUPPLY	85.46	92.13	101.86	-7.2	-9.6
35	Electricity supply	85.46	92.13	101.86	-7.2	-9.6
E	WATER SUPPLY	100.62	99.91	95.85	0.7	4.2
36	Water collection, treatment and supply	100.62	99.91	95.85	0.7	4.2
MAIN INDUSTRIAL GROUPINGS						
1	Energy	82.68	95.08	103.82	-13.0	-8.4
2	Intermediate goods	115.52	114.74	112.53	0.7	2.0
3	Capital goods	117.25	113.26	102.92	3.5	10.0
4	Consumer Durables	102.03	107.18	96.30	-4.8	11.3
5	Consumer Non-Durables	105.93	105.25	102.11	0.6	3.1

* Provisional data

Note: The indices are rounded up to two decimal digits when published and percentage changes up to one decimal digit when published.

Table 2. Average indices of the period January – October and rates of change (%) of the Industrial Production Index
(Working day adjusted data, according to the real number of working days)

Base year: 2015=100.0

Code	Division	Average indices of the period Jan.- Oct.			Rate of change (%)	
		2020*	2019	2018	2020/2019	2019/2018
OVERALL INDEX		104.73	108.73	108.12	-3.7	0.6
B	MINING AND QUARRYING	93.99	98.62	106.73	-4.7	-7.6
05-06-09	Mining of coal and lignite – Extraction of crude petroleum and natural gas – Mining support service activities	18.84	60.23	80.94	-68.7	-25.6
07	Mining of metal ores	146.69	115.67	135.70	26.8	-14.8
08	Other mining and quarrying	86.91	98.39	100.56	-11.7	-2.2
C	MANUFACTURING	108.02	110.97	109.08	-2.7	1.7
10	Food	103.28	106.26	104.19	-2.8	2.0
11	Beverages	92.32	104.08	103.93	-11.3	0.1
12	Tobacco products	111.31	101.63	90.80	9.5	11.9
13	Textiles	104.55	104.10	106.37	0.4	-2.1
14	Wearing apparel	62.64	87.84	93.74	-28.7	-6.3
15	Leather and related products	64.36	103.72	107.20	-37.9	-3.2
16	Wood and products of wood and cork, except furniture	94.90	107.08	104.32	-11.4	2.6
17	Paper and paper products	108.64	104.66	106.07	3.8	-1.3
18	Printing and reproduction of recorded products	101.34	100.43	95.65	0.9	5.0
19	Coke and refined petroleum products	98.69	107.33	115.72	-8.0	-7.3
20	Chemicals and chemical products	126.59	127.90	119.17	-1.0	7.3
21	Basic pharmaceutical products and pharmaceutical preparations	180.23	157.34	128.09	14.5	22.8
22	Rubber and plastic products	115.17	116.04	106.94	-0.7	8.5
23	Other non-metallic mineral products	102.34	107.81	118.54	-5.1	-9.1
24	Basic metals	121.02	127.38	129.56	-5.0	-1.7
25	Fabricated metal products, except machinery and equipment	120.70	119.19	118.38	1.3	0.7
26	Computers, electronic and optical products	142.18	141.86	111.76	0.2	26.9
27	Electrical equipment	94.28	101.89	95.16	-7.5	7.1
28	Machinery and equipment n. e. c.	94.18	102.12	97.65	-7.8	4.6
29	Motor vehicles, trailers and semi-trailers	99.23	80.23	78.15	23.7	2.7
30	Other transport equipment	54.68	53.20	57.56	2.8	-7.6
31	Furniture	110.33	117.02	117.47	-5.7	-0.4
32	Other manufacturing	95.44	106.99	103.07	-10.8	3.8
33	Repair and installation of machinery and equipment	83.56	86.71	81.31	-3.6	6.6
D	ELECTRICITY SUPPLY	95.72	104.05	106.97	-8.0	-2.7
35	Electricity supply	95.72	104.05	106.97	-8.0	-2.7
E	WATER SUPPLY	98.89	98.20	96.50	0.7	1.8
36	Water collection, treatment and supply	98.89	98.20	96.50	0.7	1.8
MAIN INDUSTRIAL GROUPINGS						
1	Energy	96.78	104.43	108.64	-7.3	-3.9
2	Intermediate goods	108.89	111.69	112.30	-2.5	-0.5
3	Capital goods	106.00	106.67	100.31	-0.6	6.3
4	Consumer Durables	95.11	104.68	104.20	-9.1	0.5
5	Consumer Non-Durables	111.25	112.37	106.50	-1.0	5.5

* Provisional data

Note: The indices are rounded up to two decimal digits when published and percentage changes up to one decimal digit when published.

Table 3. Monthly rate of change of the Industrial Production Index*(Working day adjusted data, according to the real number of working days)*

Base year: 2015=100.0

Code	Division	October 2020*	September 2020**	Rate of change (%) Oct. 2020 / Sep. 2020
OVERALL INDEX		100.52	110.63	-9.1
B	MINING AND QUARRYING	106.21	105.84	0.3
05-06-09	Mining of coal and lignite – Extraction of crude petroleum and natural gas – Mining support service activities	36.43	41.77	-12.8
07	Mining of metal ores	151.47	136.96	10.6
08	Other mining and quarrying	100.89	104.55	-3.5
C	MANUFACTURING	104.73	111.79	-6.3
10	Food	89.90	111.19	-19.1
11	Beverages	77.23	101.67	-24.0
12	Tobacco products	121.77	124.89	-2.5
13	Textiles	126.68	115.82	9.4
14	Wearing apparel	75.17	81.56	-7.8
15	Leather and related products	67.41	72.31	-6.8
16	Wood and products of wood and cork, except furniture	94.27	102.04	-7.6
17	Paper and paper products	106.16	114.95	-7.6
18	Printing and reproduction of recorded products	101.58	105.75	-3.9
19	Coke and refined petroleum products	72.09	80.20	-10.1
20	Chemicals and chemical products	122.61	133.05	-7.8
21	Basic pharmaceutical products and pharmaceutical preparations	203.13	181.22	12.1
22	Rubber and plastic products	113.31	120.46	-5.9
23	Other non-metallic mineral products	117.52	117.04	0.4
24	Basic metals	133.27	132.88	0.3
25	Fabricated metal products, except machinery and equipment	134.56	133.49	0.8
26	Computers, electronic and optical products	144.12	137.81	4.6
27	Electrical equipment	113.73	98.83	15.1
28	Machinery and equipment n. e. c.	99.88	96.54	3.5
29	Motor vehicles, trailers and semi-trailers	108.77	69.94	55.5
30	Other transport equipment	65.74	53.05	23.9
31	Furniture	122.77	128.01	-4.1
32	Other manufacturing	103.85	92.39	12.4
33	Repair and installation of machinery and equipment	79.85	92.98	-14.1
D	ELECTRICITY SUPPLY	85.46	107.85	-20.8
35	Electricity supply	85.46	107.85	-20.8
E	WATER SUPPLY	100.62	107.10	-6.1
36	Water collection, treatment and supply	100.62	107.10	-6.1
MAIN INDUSTRIAL GROUPINGS				
1	Energy	82.68	98.92	-16.4
2	Intermediate goods	115.52	117.56	-1.7
3	Capital goods	117.25	112.11	4.6
4	Consumer Durables	102.03	109.53	-6.8
5	Consumer Non-Durables	105.93	119.08	-11.0

* Provisional data **Revised data

Note: The indices are rounded up to two decimal digits when published and percentage changes up to one decimal digit when published.

Table 4. Monthly rate of change of the seasonally adjusted Industrial Production Index

Base year: 2015=100.0

Code	Division	October 2020	September 2020	Rate of change (%) Oct. 2020 / Sep. 2020
OVERALL INDEX		103.21	106.53	-3.1
B	MINING AND QUARRYING	94.72	90.07	5.2
05-06-09	Mining of coal and lignite – Extraction of crude petroleum and natural gas – Mining support service activities	-	-	-
07	Mining of metal ores	140.79	126.58	11.2
08	Other mining and quarrying	87.45	84.85	3.1
C	MANUFACTURING	107.11	108.08	-0.9
10	Food	97.88	103.00	-5.0
11	Beverages	95.89	91.53	4.8
12	Tobacco products	113.49	114.93	-1.3
13	Textiles	110.91	108.71	2.0
14	Wearing apparel	71.10	74.32	-4.3
15	Leather and related products	65.76	67.88	-3.1
16	Wood and products of wood and cork, except furniture	98.03	97.89	0.2
17	Paper and paper products	107.78	106.85	0.9
18	Printing and reproduction of recorded products	99.56	106.62	-6.6
19	Coke and refined petroleum products	73.73	79.91	-7.7
20	Chemicals and chemical products	122.16	123.68	-1.2
21	Basic pharmaceutical products and pharmaceutical preparations	201.32	190.42	5.7
22	Rubber and plastic products	111.75	118.03	-5.3
23	Other non-metallic mineral products	107.82	109.33	-1.4
24	Basic metals	127.84	127.22	0.5
25	Fabricated metal products, except machinery and equipment	133.71	129.61	3.2
26	Computers, electronic and optical products	143.75	141.64	1.5
27	Electrical equipment	113.67	99.29	14.5
28	Machinery and equipment n. e. c.	100.75	103.32	-2.5
29	Motor vehicles, trailers and semi-trailers	116.23	74.71	55.6
30	Other transport equipment	59.74	58.86	1.5
31	Furniture	130.71	128.90	1.4
32	Other manufacturing	102.85	93.42	10.1
33	Repair and installation of machinery and equipment	93.92	92.36	1.7
D	ELECTRICITY SUPPLY	91.33	104.82	-12.9
35	Electricity supply	91.33	104.82	-12.9
E	WATER SUPPLY	99.15	98.13	1.0
36	Water collection, treatment and supply	99.15	98.13	1.0
MAIN INDUSTRIAL GROUPINGS				
1	Energy	87.65	96.38	-9.1
2	Intermediate goods	112.09	111.42	0.6
3	Capital goods	115.30	112.92	2.1
4	Consumer Durables	106.98	106.74	0.2
5	Consumer Non-Durables	111.74	113.30	-1.4

Notes:

- 1. The indices are rounded up to two decimal digits when published and percentage changes up to one decimal digit when published.*
- 2. The whole time-series with seasonally adjusted indices is recalculated every time a new observation is added in the time-series.*
- 3. The composed index of divisions 05-06-09 is not seasonally adjusted, due to the fact that it is calculated from January 2015 and thus the number of observations is not adequate.*

Table 5. Evolution of the Overall Industrial Production Index*(Working day adjusted data, according to the real number of working days)***Base year: 2015=100.0**

Year and month	Overall Index	Monthly rate of change (%)	Annual rate of change (%)	12-month average index (moving average)	Rate of change of the 12-month average index (%)
2018: 1	98.71	-7.7	-0.4	106.50	3.4
2	104.86	6.2	-0.7	106.44	2.5
3	109.14	4.1	0.8	106.52	1.9
4	105.08	-3.7	3.2	106.79	2.2
5	108.56	3.3	1.0	106.88	1.8
6	112.90	4.0	1.3	107.00	1.5
7	120.86	7.0	3.5	107.34	1.6
8	104.96	-13.2	-0.3	107.32	1.2
9	110.95	5.7	3.3	107.62	1.3
10	105.16	-5.2	0.004	107.62	1.2
11	108.75	3.4	5.2	108.07	1.5
12	109.38	0.6	2.3	108.28	1.6
Annual average	108.28				
2019: 1	102.78	-6.0	4.1	108.61	2.0
2	106.85	4.0	1.9	108.78	2.2
3	108.50	1.5	-0.6	108.73	2.1
4	107.85	-0.6	2.6	108.96	2.0
5	108.13	0.3	-0.4	108.92	1.9
6	112.35	3.9	-0.5	108.88	1.8
7	118.42	5.4	-2.0	108.67	1.2
8	104.92	-11.4	-0.03	108.67	1.3
9	113.05	7.7	1.9	108.85	1.1
10	104.43	-7.6	-0.7	108.79	1.1
11	98.28	-5.9	-9.6	107.91	-0.1
12	105.24	7.1	-3.8	107.57	-0.7
Annual average	107.57				
2020*: 1	102.14	-3.0	-0.6	107.51	-1.0
2	103.55	1.4	-3.1	107.24	-1.4
3	108.52	4.8	0.01	107.24	-1.4
4	96.22	-11.3	-10.8	106.27	-2.5
5	99.33	3.2	-8.1	105.54	-3.1
6	107.16	7.9	-4.6	105.10	-3.5
7	118.48	10.6	0.04	105.11	-3.3
8	100.75	-15.0	-4.0	104.76	-3.6
9	110.63	9.8	-2.1	104.56	-3.9
10	100.52	-9.1	-3.7	104.23	-4.2

* Provisional data

Note: The indices are rounded up to two decimal digits when published and percentage changes up to one decimal digit when published.

Table 6. Monthly evolution of the seasonally adjusted Overall Industrial Production Index and Main Industrial Groupings

Base year: 2015=100.0

Year and month	Overall Index		Energy		Intermediate goods		Capital goods		Consumer durables		Consumer non-durables		
	Index	Monthly rate of change (%)	Index	Monthly rate of change (%)	Index	Monthly rate of change (%)	Index	Monthly rate of change (%)	Index	Monthly rate of change (%)	Index	Monthly rate of change (%)	
2018:	1	107.26	-0.7	103.79	-3.7	113.55	2.0	110.50	10.5	110.18	-2.5	105.58	-2.0
	2	107.66	0.4	109.58	5.6	110.59	-2.6	99.44	-10.0	108.05	-1.9	105.21	-0.3
	3	108.65	0.9	113.51	3.6	109.80	-0.7	102.92	3.5	109.20	1.1	103.39	-1.7
	4	106.59	-1.9	106.96	-5.8	111.02	1.1	112.16	9.0	108.25	-0.9	101.16	-2.2
	5	107.76	1.1	109.45	2.3	109.27	-1.6	108.14	-3.6	106.63	-1.5	104.52	3.3
	6	107.42	-0.3	107.76	-1.5	110.25	0.9	104.16	-3.7	109.29	2.5	105.60	1.0
	7	108.78	1.3	105.80	-1.8	113.33	2.8	105.02	0.8	101.42	-7.2	110.19	4.4
	8	108.42	-0.3	109.50	3.5	115.04	1.5	105.80	0.7	100.07	-1.3	103.09	-6.5
	9	107.46	-0.9	111.53	1.9	108.51	-5.7	107.21	1.3	98.81	-1.3	102.23	-0.8
	10	108.03	0.5	109.33	-2.0	109.07	0.5	103.37	-3.6	100.51	1.7	107.28	4.9
	11	112.72	4.3	112.75	3.1	111.28	2.0	109.76	6.2	98.26	-2.2	115.32	7.5
	12	110.25	-2.2	111.82	-0.8	107.90	-3.0	106.03	-3.4	105.73	7.6	111.53	-3.3
Annual average		108.42		109.31		110.80		106.21		104.70		106.26	
2019:	1	110.41	0.1	114.20	2.1	108.53	0.6	104.87	-1.1	97.64	-7.7	109.41	-1.9
	2	109.65	-0.7	108.00	-5.4	110.62	1.9	113.13	7.9	101.94	4.4	110.35	0.9
	3	107.59	-1.9	100.57	-6.9	111.95	1.2	114.44	1.2	106.58	4.6	110.92	0.5
	4	109.15	1.5	102.87	2.3	114.10	1.9	114.45	0.01	108.17	1.5	111.55	0.6
	5	107.14	-1.8	98.83	-3.9	111.62	-2.2	114.09	-0.3	105.91	-2.1	111.92	0.3
	6	107.09	-0.04	105.44	6.7	107.17	-4.0	112.24	-1.6	105.26	-0.6	107.77	-3.7
	7	106.36	-0.7	100.72	-4.5	108.44	1.2	107.99	-3.8	109.69	4.2	110.95	3.0
	8	108.30	1.8	108.31	7.5	107.50	-0.9	112.08	3.8	97.99	-10.7	108.45	-2.3
	9	109.08	0.7	102.61	-5.3	110.73	3.0	115.67	3.2	107.47	9.7	113.96	5.1
	10	107.33	-1.6	100.51	-2.1	111.29	0.5	112.66	-2.6	111.78	4.0	110.88	-2.7
	11	102.12	-4.9	91.08	-9.4	106.98	-3.9	108.91	-3.3	114.20	2.2	109.29	-1.4
	12	106.05	3.8	95.79	5.2	109.39	2.3	114.79	5.4	106.00	-7.2	113.54	3.9
Annual average		107.52		102.41		109.86		112.11		106.05		110.75	
2020:	1	110.51	4.2	101.33	5.8	115.18	5.3	119.56	4.2	117.75	11.1	115.22	1.5
	2	106.34	-3.8	95.71	-5.6	111.30	-3.4	114.60	-4.1	111.37	-5.4	112.90	-2.0
	3	107.66	1.2	98.94	3.4	112.36	1.0	109.50	-4.4	98.17	-11.8	114.54	1.4
	4	98.18	-8.8	100.59	1.7	89.36	-20.5	104.56	-4.5	51.57	-47.5	102.77	-10.3
	5	99.08	0.9	96.45	-4.1	98.87	10.6	103.89	-0.6	67.61	31.1	102.75	-0.02
	6	102.11	3.1	95.04	-1.5	103.97	5.2	109.51	5.4	99.90	47.8	107.38	4.5
	7	106.22	4.0	99.74	5.0	109.90	5.7	118.58	8.3	120.25	20.4	107.24	-0.1
	8	104.91	-1.2	94.61	-5.2	113.42	3.2	110.81	-6.6	109.10	-9.3	108.99	1.6
	9	106.53	1.5	96.38	1.9	111.42	-1.8	112.92	1.9	106.74	-2.2	113.30	4.0
	10	103.21	-3.1	87.65	-9.1	112.09	0.6	115.30	2.1	106.98	0.2	111.74	-1.4

Notes:

1. The indices are rounded up to two decimal digits when published and percentage changes up to one decimal digit when published.
2. The whole time-series with seasonally adjusted indices is recalculated every time a new observation is added in the time-series.

METHODOLOGICAL NOTES

Generally	The Industrial Production Index (IPI) in Greece has been compiled by the Hellenic Statistical Authority (ELSTAT) from 1959 onwards.
Purpose of the index	The objective of the index is to compare the magnitude (volume) of the output in the current month in the mining and quarrying, manufacturing, electricity and water supply divisions with the corresponding output of a given fixed period, which is considered as base period. The Industrial Production Index shows the evolution of the value added of the production factors cost, at constant prices.
Legal framework	The compilation of the IPI is governed by Council Regulation (EC) No 1165/1998 concerning short-term statistics. Furthermore, the IPI is governed by Regulation (EC) No 1893/2006 of the European Parliament and of the Council, by Commission Regulation (EC) No 656/2007 and by Council Regulation (EC) No 451/2008.
Reference period	Month.
Base year	2015=100.0.
Revision	The IPI is a fixed base index. The Industrial Production Index was currently revised with new base year 2015 (2015=100.0) according to the provisions of Council Regulation No 1165/1998 concerning short-term statistics. Short-term indices are revised every five (5) years, particularly in calendar years ending in 0 or 5.
Statistical classifications	At the level of branches of economic activities, the statistical classification of economic activities NACE Rev.2 of EU was used (Regulation No 1893/2006), while at the level of main industrial groupings, the allocation of two-digit and three-digit NACE Rev. 2 headings to categories of aggregate classification was used, in accordance with Council Regulation No 656/2007. At product level, the statistical classification CPA 2008 of EU was used, according to Council Regulation No 451/2008.
Geographical coverage	The index covers the whole Country.
Coverage of economic activities	The index covers all the sections of industry, the main industrial groups, as well as all levels of economic activity.
Statistical survey	The data are collected from a sample of 1,263 enterprises. The survey covers 325 products and the measurement of the surveyed products is made in terms of output quantities or in terms of production value or turnover, according to the specific features in each branch of economic activity.
Data collection, processing and imputation in the context of the COVID-19 pandemic	<p>The compilation of the indices was mainly based on data collected by the enterprises (via web-based application, email), as well as data from administrative sources. In order to deal with missing data for products measured in terms of output quantities, appropriate estimation methods were applied on a case-by-case basis. The estimation is made at product per enterprise level, either on the basis of the annual rate of change in the turnover of the enterprise producing the product, or on the basis of the average annual rate of change in the quantity produced by the other enterprises, for which data were collected during the reference month (ratio imputation).</p> <p>For October 2020 there was no significant change in the data collection compared to previous reference months.</p>
Seasonal adjustment	<p>Seasonal adjustment is the procedure followed to remove the impact of seasonality on the time-series (i.e. the impact of monthly effects, e.g. holidays, tourist period etc.), in order to improve comparability over time. The method applied is TRAMO-SEATS with the use of JDemetra+ 2.0.0.</p> <p>For the seasonal adjustment of the Industrial Production Index at 2-digit level of NACE Rev.2, at section level (B – Mining and Quarrying, C – Manufacturing, D – Electricity and E – Water Supply) and for the Main Industrial Groupings (MIGs), the direct approach is applied, namely each time-series is seasonally adjusted independently. For the overall Industrial Production Index, the indirect approach is applied, with the seasonally adjusted IPI being computed by aggregating the seasonally adjusted MIGs using appropriate weights.</p>
Seasonal adjustment in the context of the COVID-19 pandemic	<p>The COVID-19 outbreak has a severe impact on several economic activities. Given the fact that, calendar and seasonal adjustment corresponds to predictable and recurrent phenomena, the impact of COVID-19 pandemic, as an extraordinary phenomenon, shall not be included in the calendar or seasonal component of the time-series.</p> <p>According to the methodological recommendations and guidance of the European Statistical Service (Eurostat) on time-series treatment in the context of the COVID-19 pandemic, this impact is strongly suggested to be treated as outlier and be included in the trend-cycle component or in the irregular,</p>

depending on the type of outlier.

During the seasonal adjustment of time-series for October 2020, outliers were determined (additive outliers) in cases where it was deemed appropriate, based on statistical criteria and economic information. As new observations become available and are added in the time-series, the type of outliers may change (from additive outlier to a transitory change or a level shift), depending on the evolution of the phenomenon, which may result in significant revisions, only to the already published seasonally adjusted data (Tables 4 and 6 and Graphs 1, 4, 5 and 6).

Publication of data The revised IPI with the new base year 2015 (2015=100.0) is released since July 2019, with May 2019 as the first reference month. Data with base year 2015=100.0 are available from January 2000 onwards.

References More information about the methodology concerning the compilation and calculation of the index and the time series are available on the website of the Hellenic Statistical Authority (ELSTAT) (<http://www.statistics.gr/en/statistics/-/publication/DKT21/->).