



PRESS RELEASE

INDUSTRIAL PRODUCTION INDEX: September 2022, y-o-y decrease of 1.1%

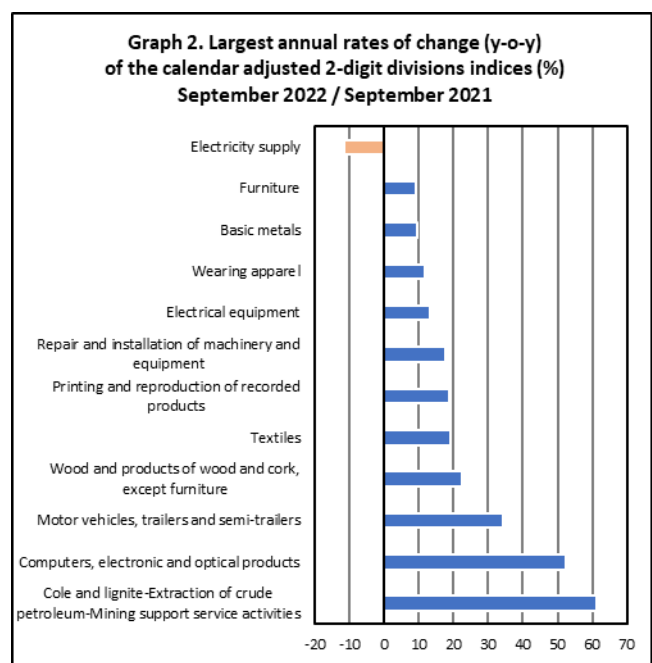
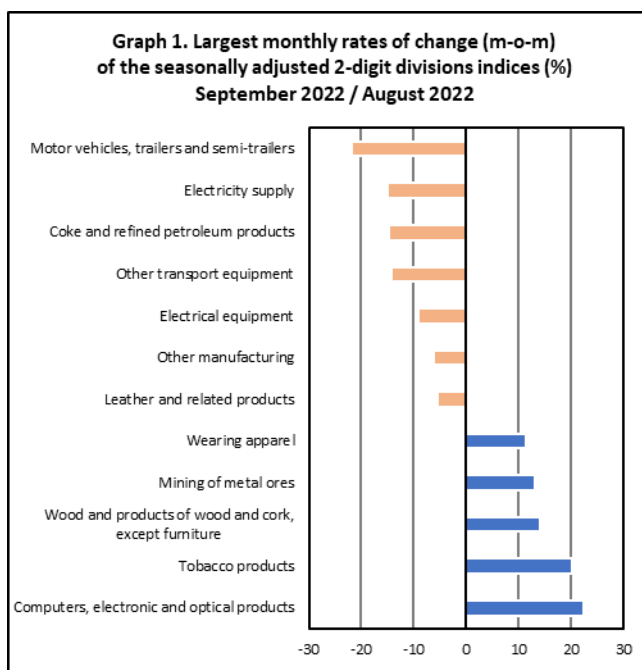
The Hellenic Statistical Authority announces the Industrial Production Index (IPI) with base year 2015=100.0 for September 2022, on the basis of provisional and working day adjusted data, as follows:

The Overall Industrial Production Index in September 2022 recorded a decrease of 1.1% compared with September 2021. The Overall IPI in September 2021 increased by 10.7% compared with the corresponding index in September 2020 (Table 1).

The average Overall Industrial Production Index for the period from January to September 2022 recorded an increase of 3.6% compared with the average IPI of the period from January to September 2021 (Table 2).

The seasonally adjusted Overall Industrial Production Index in September 2022 recorded a decrease of 3.0% compared with the corresponding index of August 2022 (Table 4).

The index of computers, electronic and optical products recorded the greatest percentage increase, whereas the index of motor vehicles, trailers and semi-trailers division showed the greatest percentage decrease in September 2022 compared with August 2022. Comparing the indices of September 2022 with the corresponding indices of September 2021, the greatest percentage decrease was recorded in electricity supply division, while the highest percentage increase was recorded in mining of coal and lignite-extraction of crude petroleum and natural gas-mining support service activities division (Tables 1 and 4).



Information on methodological issues:

Business Statistics Division
Manufacture-Construction Indices and Industrial Products Section
Head of the Section: Diamantaki Aikaterini
Tel: +30 213 135 2056
E-mail: a.diamantaki@statistics.gr

Information on data provision:

Tel: +30 213 135 2022, 2308, 2310
E-mail: data.dissem@statistics.gr

Evolution of the Industrial Production Index in September 2022

I. Annual changes: September 2022 / September 2021 (Table 1)

The 1.1% decrease of the working day adjusted Overall IPI in September 2022, compared with the corresponding index in September 2021, is due to the annual changes of the sub-indices in the following industrial sections:

1. Decrease of:

- 11.5% in the Electricity Supply Index.
- 5.0% in the Water Supply Index.
- 3.0% in the Mining and Quarrying Index. The decrease was the result of the annual change of the sub-index in the following 2-digit division: other mining and quarrying.

2. Increase of:

- 1.9% in the Manufacturing Index. The increase was mainly the result of the annual changes of the sub-indices in the following 2-digit divisions: computers, electronic and optical products, motor vehicles, trailers and semi-trailers, wood and products of wood and cork, except furniture, textiles, printing and reproduction of recorded products.

II. Rates of change of the average index of the period January - September 2022 compared with the corresponding index of the period January - September 2021 (Table 2)

The 3.6% increase of the working day adjusted average Overall IPI in the 9-month period January - September 2022, compared with the corresponding index in January - September 2021, is due to the corresponding rates of change of the sub-indices in the following industrial sections:

1. Increase of:

- 4.8% in the Manufacturing Index.
- 1.6% in the Electricity Supply Index.

2. Decrease of:

- 2.2% in the Water Supply Index.
- 9.3% in the Mining and Quarrying Index.

III. Monthly changes: September 2022 / August 2022 (Table 4)

The 3.0% decrease of the seasonally adjusted Overall IPI in September 2022, compared with the corresponding index in August 2022 is due to the monthly changes of the sub-indices in the following industrial sections:

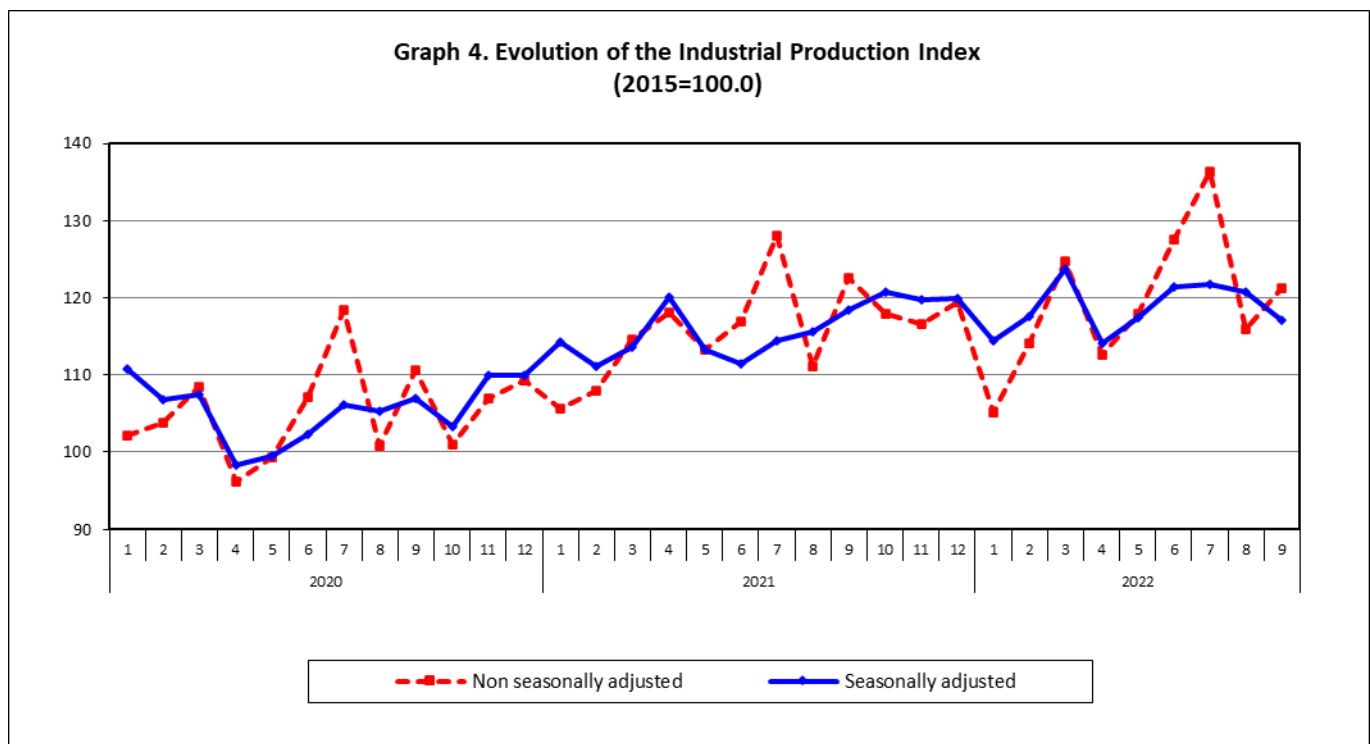
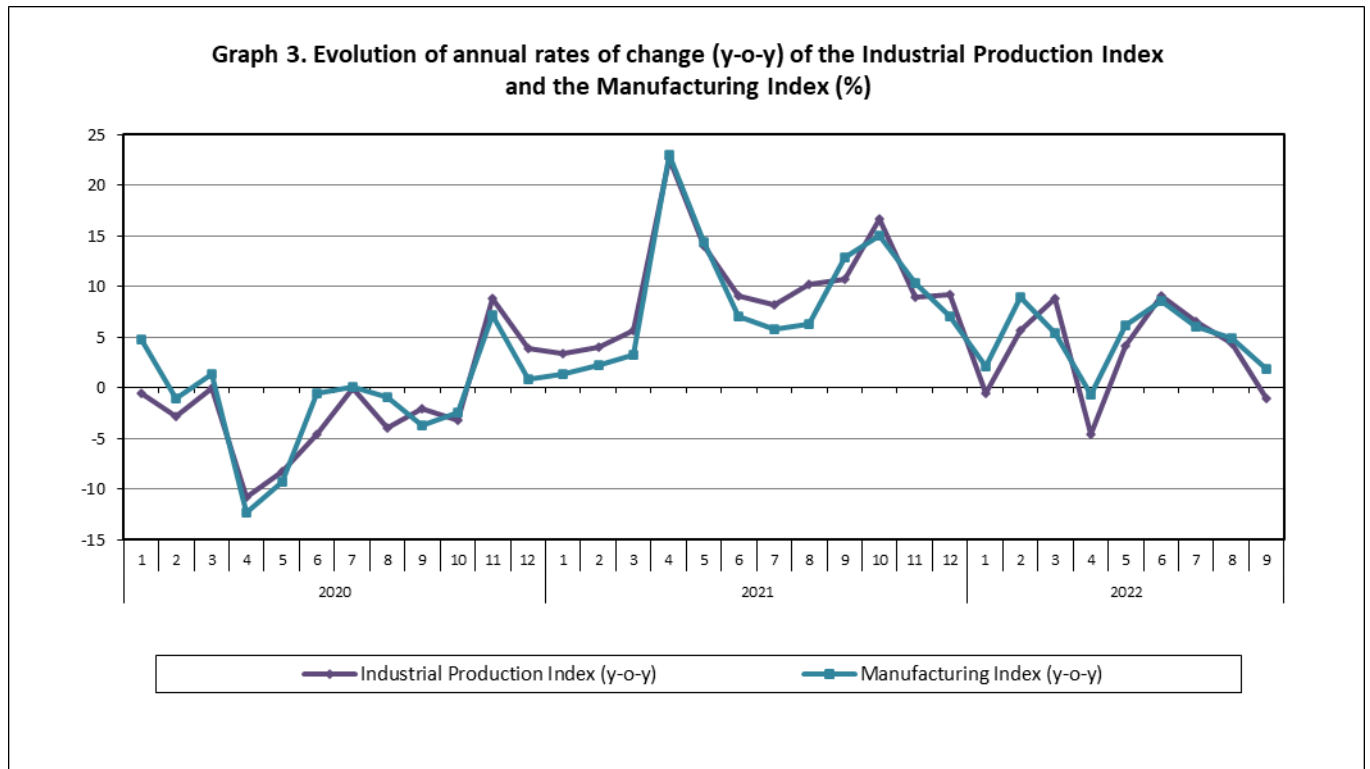
1. Decrease of:

- 14.9% in the Electricity Supply Index.
- 1.1% in the Water Supply Index.

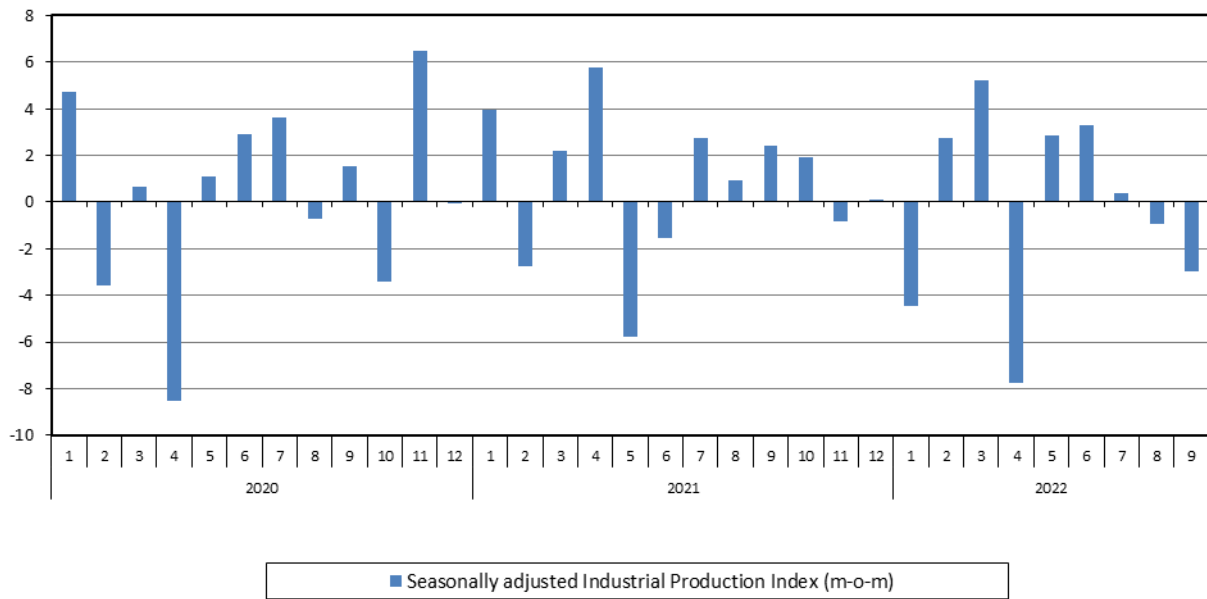
2. Increase of:

- 1.3% in the Manufacturing Index.
- 6.8% in the Mining and Quarrying Index.

The following graphs depict the annual rates of change (y-o-y) of the Industrial Production Index and the Manufacturing Index, the evolution of the seasonally and non-seasonally adjusted Overall Industrial Production Index, as well as the monthly rates of change (m-o-m) of the seasonally adjusted index.



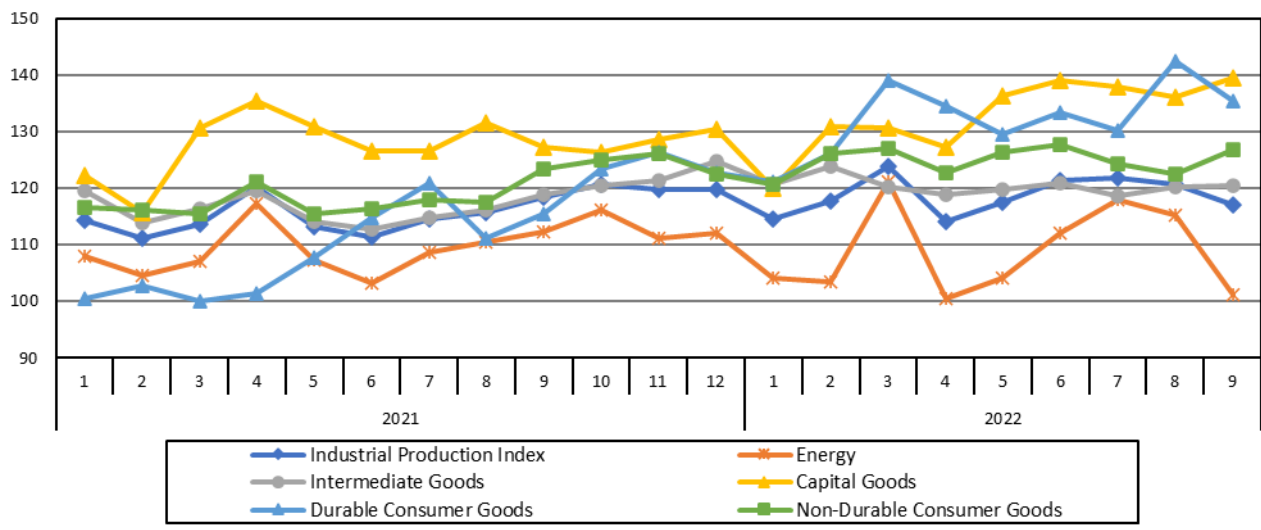
Graph 5. Evolution of the monthly rates of change (m-o-m) of the seasonally adjusted Industrial Production Index (%)



It should be noted that the time series with the seasonally adjusted indices is recalculated every time a new observation is added in the time series. Therefore, the seasonally adjusted data differ from the data published in the previous Press Release.

The following graphs depict the evolution of the seasonally adjusted Industrial Production Index and the Main Industrial Groupings, as well as the evolution of the Industrial Production Index and the Industrial Sections Indices.

Graph 6. Evolution of the seasonally adjusted Industrial Production Index and the Main Industrial Groupings Indices, January 2021 - September 2022 (2015=100.0)



Graph 7. Evolution of the Industrial Production Index and the Industrial Section Indices (2015=100.0)

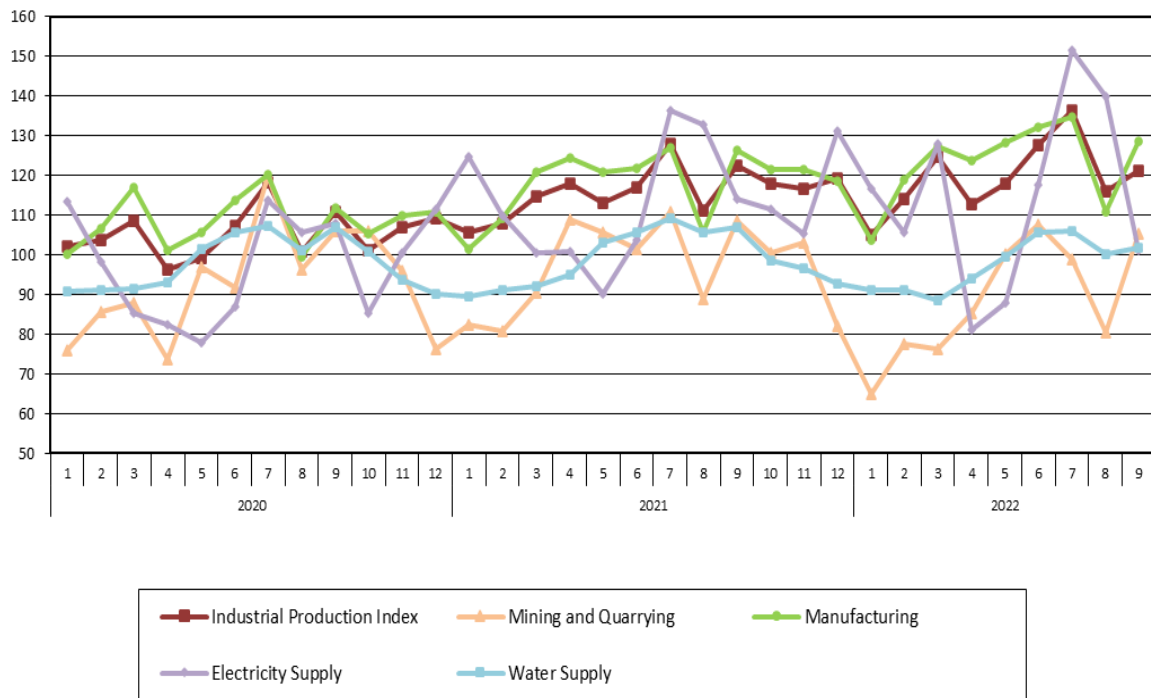


Table 1. Annual rates of change of the Industrial Production Index*(Working day adjusted data, according to the real number of working days)***Base year: 2015=100.0**

Code	Division	September			Rate of change (%)	
		2022*	2021	2020	2022/2021	2021/2020
OVERALL INDEX		121.30	122.60	110.70	-1.1	10.7
B	MINING AND QUARRYING	105.43	108.73	105.84	-3.0	2.7
05-06-09	Mining of coal and lignite – Extraction of crude petroleum and natural gas – Mining support service activities	33.90	21.05	41.77	61.1	-49.6
07	Mining of metal ores	138.52	136.03	136.96	1.8	-0.7
08	Other mining and quarrying	104.55	112.23	104.55	-6.8	7.3
C	MANUFACTURING	128.75	126.32	111.88	1.9	12.9
10	Food	123.46	121.51	110.76	1.6	9.7
11	Beverages	116.87	124.44	102.94	-6.1	20.9
12	Tobacco products	128.73	120.41	124.89	6.9	-3.6
13	Textiles	126.56	106.23	115.82	19.1	-8.3
14	Wearing apparel	99.21	88.71	81.39	11.8	9.0
15	Leather and related products	95.29	89.50	72.94	6.5	22.7
16	Wood and products of wood and cork, except furniture	134.21	109.60	102.04	22.4	7.4
17	Paper and paper products	121.03	121.98	116.13	-0.8	5.0
18	Printing and reproduction of recorded products	132.48	111.61	105.78	18.7	5.5
19	Coke and refined petroleum products	102.68	112.99	80.20	-9.1	40.9
20	Chemicals and chemical products	138.93	146.51	132.97	-5.2	10.2
21	Basic pharmaceutical products and pharmaceutical preparations	207.74	205.03	180.03	1.3	13.9
22	Rubber and plastic products	125.50	127.23	120.98	-1.4	5.2
23	Other non-metallic mineral products	122.18	123.52	117.11	-1.1	5.5
24	Basic metals	141.86	129.66	132.11	9.4	-1.9
25	Fabricated metal products, except machinery and equipment	152.06	149.79	133.19	1.5	12.5
26	Computers, electronic and optical products	270.27	177.20	142.37	52.5	24.5
27	Electrical equipment	135.63	119.87	99.81	13.2	20.1
28	Machinery and equipment n. e. c.	117.46	108.74	96.18	8.0	13.1
29	Motor vehicles, trailers and semi-trailers	130.04	96.88	69.94	34.2	38.5
30	Other transport equipment	74.84	71.71	64.66	4.4	10.9
31	Furniture	151.79	138.91	127.87	9.3	8.6
32	Other manufacturing	133.54	134.79	92.39	-0.9	45.9
33	Repair and installation of machinery and equipment	101.54	86.42	92.98	17.5	-7.1
D	ELECTRICITY SUPPLY	101.01	114.14	107.85	-11.5	5.8
35	Electricity supply	101.01	114.14	107.85	-11.5	5.8
E	WATER SUPPLY	101.75	107.07	107.10	-5.0	0.0
36	Water collection, treatment and supply	101.75	107.07	107.10	-5.0	0.0
MAIN INDUSTRIAL GROUPINGS						
1	Energy	101.48	112.83	98.92	-10.1	14.1
2	Intermediate goods	127.17	125.60	117.40	1.3	7.0
3	Capital goods	139.34	126.57	113.31	10.1	11.7
4	Consumer Durables	140.07	120.03	109.45	16.7	9.7
5	Consumer Non-Durables	134.98	131.15	119.11	2.9	10.1

* Provisional data

Note: The indices are rounded up to two decimal digits when published and percentage changes up to one decimal digit when published.

Table 2. Average indices of the period January – September and rates of change (%) of the Industrial Production Index
(Working day adjusted data, according to the real number of working days)

		Base year: 2015=100.0				
Code	Division	Average indices of the period Jan.-Sept.			Rate of change (%)	
		2022*	2021	2020	2022/2021	2021/2020
OVERALL INDEX		119.51	115.35	105.23	3.6	9.6
B	MINING AND QUARRYING	88.56	97.61	92.64	-9.3	5.4
05-06-09	Mining of coal and lignite – Extraction of crude petroleum and natural gas – Mining support service activities	22.80	20.26	16.89	12.6	19.9
07	Mining of metal ores	120.96	127.17	146.16	-4.9	-13.0
08	Other mining and quarrying	87.07	98.81	85.36	-11.9	15.8
C	MANUFACTURING	123.17	117.53	108.43	4.8	8.4
10	Food	112.23	107.41	104.89	4.5	2.4
11	Beverages	112.19	109.48	93.04	2.5	17.7
12	Tobacco products	120.43	121.11	110.15	-0.6	9.9
13	Textiles	112.52	113.32	102.09	-0.7	11.0
14	Wearing apparel	81.59	70.28	61.24	16.1	14.8
15	Leather and related products	81.72	76.08	64.09	7.4	18.7
16	Wood and products of wood and cork, except furniture	110.58	95.65	95.02	15.6	0.67
17	Paper and paper products	118.08	113.76	109.04	3.8	4.32
18	Printing and reproduction of recorded products	135.69	106.79	101.32	27.1	5.4
19	Coke and refined petroleum products	105.35	106.46	101.64	-1.0	4.7
20	Chemicals and chemical products	127.19	130.82	127.02	-2.8	3.0
21	Basic pharmaceutical products and pharmaceutical preparations	221.25	201.95	177.32	9.6	13.9
22	Rubber and plastic products	128.77	122.76	115.50	4.9	6.3
23	Other non-metallic mineral products	121.91	118.67	100.66	2.7	17.9
24	Basic metals	131.19	123.07	119.35	6.6	3.1
25	Fabricated metal products, except machinery and equipment	137.87	139.24	119.09	-1.0	16.9
26	Computers, electronic and optical products	213.00	180.66	145.47	17.9	24.2
27	Electrical equipment	139.20	116.47	92.70	19.5	25.6
28	Machinery and equipment n. e. c.	120.45	107.86	93.50	11.7	15.4
29	Motor vehicles, trailers and semi-trailers	144.87	103.59	98.16	39.9	5.5
30	Other transport equipment	71.12	67.81	55.45	4.9	22.3
31	Furniture	144.31	120.67	108.93	19.6	10.8
32	Other manufacturing	126.96	120.45	94.50	5.4	27.5
33	Repair and installation of machinery and equipment	91.32	81.61	83.98	11.9	-2.8
D	ELECTRICITY SUPPLY	114.34	112.59	96.85	1.6	16.2
35	Electricity supply	114.34	112.59	96.85	1.6	16.2
E	WATER SUPPLY	97.56	99.78	98.81	-2.2	1.0
36	Water collection, treatment and supply	97.56	99.78	98.81	-2.2	1.0
MAIN INDUSTRIAL GROUPINGS						
1	Energy	109.61	109.14	98.35	0.4	11.0
2	Intermediate goods	121.28	117.06	108.19	3.6	8.2
3	Capital goods	126.71	121.20	104.95	4.5	15.5
4	Consumer Durables	131.01	107.68	94.34	21.7	14.1
5	Consumer Non-Durables	127.62	120.36	111.85	6.0	7.6

* Provisional data

Note: The indices are rounded up to two decimal digits when published and percentage changes up to one decimal digit when published.

Table 3. Monthly rate of change of the Industrial Production Index*(Working day adjusted data, according to the real number of working days)***Base year: 2015=100.0**

Code	Division	September 2022*	August 2022**	Rate of change (%) Sept. 2022 / Aug. 2022
OVERALL INDEX		121.30	115.97	4.6
B	MINING AND QUARRYING	105.43	80.55	30.9
05-06-09	Mining of coal and lignite – Extraction of crude petroleum and natural gas – Mining support service activities	33.90	23.05	47.1
07	Mining of metal ores	138.52	102.60	35.0
08	Other mining and quarrying	104.55	81.41	28.4
C	MANUFACTURING	128.75	110.93	16.1
10	Food	123.46	130.96	-5.7
11	Beverages	116.87	123.17	-5.1
12	Tobacco products	128.73	83.05	55.0
13	Textiles	126.56	70.71	79.0
14	Wearing apparel	99.21	65.48	51.5
15	Leather and related products	95.29	48.17	97.8
16	Wood and products of wood and cork, except furniture	134.21	73.93	81.5
17	Paper and paper products	121.03	97.71	23.9
18	Printing and reproduction of recorded products	132.48	95.13	39.3
19	Coke and refined petroleum products	102.68	121.13	-15.2
20	Chemicals and chemical products	138.93	91.37	52.1
21	Basic pharmaceutical products and pharmaceutical preparations	207.74	125.05	66.1
22	Rubber and plastic products	125.50	97.78	28.3
23	Other non-metallic mineral products	122.18	105.45	15.9
24	Basic metals	141.86	108.13	31.2
25	Fabricated metal products, except machinery and equipment	152.06	101.75	49.4
26	Computers, electronic and optical products	270.27	167.89	61.0
27	Electrical equipment	135.63	110.57	22.7
28	Machinery and equipment n. e. c.	117.46	80.21	46.4
29	Motor vehicles, trailers and semi-trailers	130.04	124.91	4.1
30	Other transport equipment	74.84	66.00	13.4
31	Furniture	151.79	98.05	54.8
32	Other manufacturing	133.54	107.88	23.8
33	Repair and installation of machinery and equipment	101.54	68.37	48.5
D	ELECTRICITY SUPPLY	101.01	139.93	-27.8
35	Electricity supply	101.01	139.93	-27.8
E	WATER SUPPLY	101.75	100.24	1.5
36	Water collection, treatment and supply	101.75	100.24	1.5
MAIN INDUSTRIAL GROUPINGS				
1	Energy	101.48	129.75	-21.8
2	Intermediate goods	127.17	98.17	29.5
3	Capital goods	139.34	95.23	46.3
4	Consumer Durables	140.07	104.01	34.7
5	Consumer Non-Durables	134.98	119.20	13.2

* Provisional data ** Revised data

Note: The indices are rounded up to two decimal digits when published and percentage changes up to one decimal digit when published.

Table 4. Monthly rate of change of the seasonally adjusted Industrial Production Index

		Base year: 2015=100.0		
Code	Division	September 2022	August 2022	Rate of change (%) Sept. 2022 /August 2022
OVERALL INDEX		117.07	120.69	-3.0
B	MINING AND QUARRYING	89.49	83.79	6.8
05-06-09	Mining of coal and lignite – Extraction of crude petroleum and natural gas – Mining support service activities			-
07	Mining of metal ores	127.09	112.52	12.9
08	Other mining and quarrying	85.93	82.89	3.7
C	MANUFACTURING	123.97	122.39	1.3
10	Food	111.50	110.00	1.4
11	Beverages	101.53	104.00	-2.4
12	Tobacco products	119.00	99.12	20.1
13	Textiles	121.94	116.81	4.4
14	Wearing apparel	85.17	76.52	11.3
15	Leather and related products	84.19	89.17	-5.6
16	Wood and products of wood and cork, except furniture	123.10	107.96	14.0
17	Paper and paper products	114.76	115.22	-0.4
18	Printing and reproduction of recorded products	136.23	130.67	4.3
19	Coke and refined petroleum products	100.98	118.32	-14.7
20	Chemicals and chemical products	127.37	124.13	2.6
21	Basic pharmaceutical products and pharmaceutical preparations	221.35	226.94	-2.5
22	Rubber and plastic products	123.75	127.15	-2.7
23	Other non-metallic mineral products	115.83	120.03	-3.5
24	Basic metals	135.26	130.29	3.8
25	Fabricated metal products, except machinery and equipment	144.92	137.37	5.5
26	Computers, electronic and optical products	271.69	222.25	22.2
27	Electrical equipment	141.32	155.58	-9.2
28	Machinery and equipment n. e. c.	127.04	128.59	-1.2
29	Motor vehicles, trailers and semi-trailers	147.19	188.46	-21.9
30	Other transport equipment	81.20	94.77	-14.3
31	Furniture	147.41	150.22	-1.9
32	Other manufacturing	133.20	142.03	-6.2
33	Repair and installation of machinery and equipment	100.22	95.99	4.4
D	ELECTRICITY SUPPLY	101.10	118.81	-14.9
35	Electricity supply	101.10	118.81	-14.9
E	WATER SUPPLY	93.70	94.77	-1.1
36	Water collection, treatment and supply	93.70	94.77	-1.1
MAIN INDUSTRIAL GROUPINGS				
1	Energy	101.16	115.29	-12.3
2	Intermediate goods	120.45	120.13	0.3
3	Capital goods	139.48	136.01	2.6
4	Consumer Durables	135.51	142.53	-4.9
5	Consumer Non-Durables	126.84	122.50	3.5

Notes:

1. The indices are rounded up to two decimal digits when published and percentage changes up to one decimal digit when published.
2. The whole time-series with seasonally adjusted indices is recalculated every time a new observation is added in the time-series.
3. The composed index of divisions 05-06-09 is not seasonally adjusted.

Table 5. Evolution of the Overall Industrial Production Index*(Working day adjusted data, according to the real number of working days)***Base year: 2015=100.0**

Year and month	Overall Index	Monthly rate of change (%)	Annual rate of change (%)	12-month average index (moving average)	Rate of change of the 12-month average index (%)
2020: 1	102.17	-2.9	-0.6	107.52	-1.0
2	103.80	1.6	-2.9	107.26	-1.4
3	108.53	4.6	0.03	107.27	-1.3
4	96.26	-11.3	-10.8	106.30	-2.4
5	99.25	3.1	-8.2	105.56	-3.1
6	107.19	8.0	-4.6	105.13	-3.4
7	118.36	10.4	-0.1	105.12	-3.3
8	100.78	-14.8	-3.9	104.78	-3.6
9	110.70	9.8	-2.1	104.58	-3.9
10	101.05	-8.7	-3.2	104.30	-4.1
11	107.02	5.9	8.9	105.03	-2.7
12	109.29	2.1	3.8	105.37	-2.0
Annual average	105.37				
2021: 1	105.66	-3.3	3.4	105.66	-1.7
2	107.96	2.2	4.0	106.00	-1.2
3	114.62	6.2	5.6	106.51	-0.7
4	118.04	3.0	22.6	108.33	1.9
5	113.24	-4.1	14.1	109.49	3.7
6	116.88	3.2	9.0	110.30	4.9
7	128.03	9.5	8.2	111.11	5.7
8	111.09	-13.2	10.2	111.97	6.9
9	122.60	10.4	10.7	112.96	8.0
10	117.96	-3.8	16.7	114.36	9.6
11	116.61	-1.1	9.0	115.14	9.6
12	119.36	2.4	9.2	116.00	10.1
Annual average	116.00				
2022*: 1	105.13	-11.9	-0.5	115.96	9.7
2	114.07	8.5	5.7	116.47	9.9
3	124.69	9.3	8.8	117.31	10.1
4	112.62	-9.7	-4.6	116.86	7.9
5	117.91	4.7	4.1	117.25	7.1
6	127.53	8.2	9.1	118.13	7.1
7	136.39	6.9	6.5	118.83	7.0
8	115.97	-15.0	4.4	119.24	6.5
9	121.30	4.6	-1.1	119.13	5.5

* Provisional data

Note: The indices are rounded up to two decimal digits when published and percentage changes up to one decimal digit when published.

Table 6. Monthly evolution of the seasonally adjusted Overall Industrial Production Index and Main Industrial Groupings

Base year: 2015=100.0

Year and month	Overall Index		Energy		Intermediate goods		Capital goods		Consumer durables		Consumer non-durables	
	Index	Monthly rate of change (%)	Index	Monthly rate of change (%)	Index	Monthly rate of change (%)	Index	Monthly rate of change (%)	Index	Monthly rate of change (%)	Index	Monthly rate of change (%)
2020:												
1	110.77	4.8	101.05	6.9	114.20	5.5	124.22	6.3	122.29	12.0	115.73	1.5
2	106.81	-3.6	96.55	-4.5	111.49	-2.4	117.84	-5.1	112.93	-7.7	112.34	-2.9
3	107.52	0.7	99.06	2.6	112.40	0.8	109.24	-7.3	96.18	-14.8	114.08	1.5
4	98.37	-8.5	102.33	3.3	89.37	-20.5	101.28	-7.3	53.35	-44.5	102.10	-10.5
5	99.44	1.1	97.40	-4.8	99.49	11.3	99.70	-1.6	69.30	29.9	103.31	1.2
6	102.36	2.9	95.51	-1.9	104.70	5.2	107.22	7.5	97.04	40.0	107.79	4.3
7	106.09	3.7	98.26	2.9	111.24	6.2	118.72	10.7	116.25	19.8	107.73	-0.1
8	105.33	-0.7	93.63	-4.7	114.69	3.1	109.80	-7.5	106.41	-8.5	110.96	3.0
9	106.93	1.5	98.12	4.8	111.17	-3.1	114.33	4.1	104.80	-1.5	112.45	1.3
10	103.29	-3.4	87.57	-10.7	111.89	0.6	118.92	4.0	100.96	-3.7	111.60	-0.7
11	110.02	6.5	102.66	17.2	116.38	4.0	118.96	0.0	97.73	-3.2	112.23	0.6
12	109.98	-0.04	103.63	0.9	115.74	-0.5	113.93	-4.2	98.00	0.3	112.74	0.4
Annual average	105.58		97.98		109.40		112.85		97.94		110.26	
2021:												
1	114.31	3.9	108.01	4.2	119.46	3.2	122.36	7.4	100.52	2.6	116.50	3.3
2	111.14	-2.8	104.63	-3.1	113.86	-4.7	115.73	-5.4	102.81	2.3	116.11	-0.33
3	113.59	2.2	107.05	2.3	116.38	2.2	130.57	12.8	100.10	-2.6	115.55	-0.5
4	120.13	5.8	117.21	9.5	119.47	2.6	135.38	3.7	101.48	1.4	121.10	4.8
5	113.22	-5.8	107.20	-8.5	114.08	-4.5	130.95	-3.3	107.85	6.3	115.42	-4.7
6	111.45	-1.6	103.10	-3.8	112.64	-1.3	126.53	-3.4	114.76	6.4	116.46	0.9
7	114.52	2.8	108.54	5.3	114.88	2.0	126.53	0.0	120.80	5.3	117.97	1.3
8	115.60	0.9	110.39	1.7	116.21	1.2	131.61	4.0	111.15	-8.0	117.41	-0.5
9	118.42	2.4	112.18	1.6	118.96	2.4	127.24	-3.3	115.35	3.8	123.36	5.1
10	120.72	1.9	116.02	3.4	120.35	1.2	126.33	-0.7	123.46	7.0	125.05	1.4
11	119.74	-0.8	111.16	-4.2	121.40	0.9	128.61	1.8	126.27	2.3	126.14	0.9
12	119.85	0.1	112.16	0.9	124.68	2.7	130.39	1.4	122.79	-2.8	122.46	-2.9
Annual average	116.06		109.81		117.70		127.69		112.28		119.46	
2022:												
1	114.51	-4.5	104.07	-7.2	120.62	-3.3	119.96	-8.0	121.17	-1.3	120.58	-1.5
2	117.63	2.7	103.34	-0.7	123.94	2.7	130.95	9.2	126.21	4.2	126.05	4.5
3	123.76	5.2	121.17	17.2	120.30	-2.9	130.57	-0.3	139.12	10.2	126.99	0.7
4	114.17	-7.7	100.41	-17.1	118.78	-1.3	127.35	-2.5	134.58	-3.3	122.71	-3.4
5	117.45	2.9	104.13	3.7	119.67	0.7	136.22	7.0	129.45	-3.8	126.28	2.9
6	121.35	3.3	112.12	7.7	120.86	1.0	139.01	2.0	133.35	3.0	127.61	1.0
7	121.82	0.4	118.05	5.3	118.54	-1.9	137.88	-0.8	130.12	-2.4	124.29	-2.6
8	120.69	-0.9	115.29	-2.3	120.13	1.3	136.01	-1.4	142.53	9.5	122.50	-1.4
9	117.07	-3.0	101.16	-12.3	120.45	0.3	139.48	2.6	135.51	-4.9	126.84	3.5

Notes:

1. The indices are rounded up to two decimal digits when published and percentage changes up to one decimal digit when published.
2. The whole time-series with seasonally adjusted indices is recalculated every time a new observation is added in the time-series.

METHODOLOGICAL NOTES

Generally	The Industrial Production Index (IPI) in Greece has been compiled by the Hellenic Statistical Authority (ELSTAT) from 1959 onwards.
Purpose of the index	The objective of the index is to compare the magnitude (volume) of the output in the current month in the mining and quarrying, manufacturing, electricity and water supply divisions with the corresponding output of a given fixed period, which is considered as base period. The Industrial Production Index shows the evolution of the value added of the production factors cost, at constant prices.
Legal framework	The compilation of the IPI is based on the framework of the implementation of Council Regulation (EC) No 1165/1998 concerning short-term statistics (STS-R). Furthermore, the IPI is governed by Regulation (EC) No 1893/2006 of the European Parliament and of the Council, by Commission Regulation (EC) No 656/2007, by Council Regulation (EC) No 451/2008, by Regulation (EU) No 2019/2152 of the European Parliament and of the Council on European business statistics, as well as Commission Implementing Regulation (EU) No 2020/1197 laying down technical specifications and arrangements pursuant to Regulation (EU) No 2019/2152.
Reference period	Month.
Base year	2015=100.0.
Revision	The IPI is a fixed base index. The Industrial Production Index was currently revised with new base year 2015 (2015=100.0) according to the provisions of Council Regulation No 1165/1998 concerning short-term statistics. Short-term indices are revised every five (5) years, particularly in calendar years ending in 0 or 5.
Statistical classifications	At the level of branches of economic activities, the statistical classification of economic activities NACE Rev.2 of EU was used (Regulation No 1893/2006), while at the level of main industrial groupings, the allocation of two-digit and three-digit NACE Rev. 2 headings to categories of aggregate classification was used, in accordance with Council Regulation No 656/2007. At product level, the statistical classification CPA 2008 of EU was used, according to Council Regulation No 451/2008.
Geographical coverage	The index covers the whole Country.
Coverage of economic activities	The index covers all the sections of industry, the main industrial groups, as well as all levels of economic activity.
Statistical survey	The data are collected from a sample of 1.263 enterprises. The survey covers 325 products and the measurement of the surveyed products is made in terms of output quantities or in terms of production value or turnover, according to the specific features in each branch of economic activity.
Seasonal adjustment	Seasonal adjustment is the procedure followed to remove the impact of seasonality on the time-series (i.e. the impact of monthly effects, e.g. holidays, tourist period etc.), in order to improve comparability over time. The method applied is TRAMO-SEATS with the use of JDemetra+ 2.0.0. For the seasonal adjustment of the Industrial Production Index at 2-digit level of NACE Rev.2, at section level (B – Mining and Quarrying, C – Manufacturing, D – Electricity and E – Water Supply) and for the Main Industrial Groupings (MIGs), the direct approach is applied, namely each time-series is seasonally adjusted independently. For the overall Industrial Production Index, the indirect approach is applied, with the seasonally adjusted IPI being computed by aggregating the seasonally adjusted MIGs using appropriate weights.
Publication of data	The revised IPI with the new base year 2015 (2015=100.0) is released since July 2019, with May 2019 as the first reference month. Data with base year 2015=100.0 are available from January 2000 onwards.
References	More information about the methodology concerning the compilation and calculation of the index and the time series are available on the website of the Hellenic Statistical Authority (ELSTAT) (http://www.statistics.gr/en/statistics/-/publication/DKT21/).