



## PRESS RELEASE

### SURVEYS ON PRE-PRIMARY AND PRIMARY EDUCATION (KINDERGARTENS AND PRIMARY SCHOOLS) END OF SCHOOL YEAR 2020/2021

The Hellenic Statistical Authority (ELSTAT) announces data on Pre-Primary and Primary Education Statistics for the school year 2020/2021. On the basis of available survey data the following observations can be made:

- a) In the school year 2020/2021 compared with the school year 2019/2020, **school units** increased by 0.3% in kindergartens and decreased by 0.6% in primary schools (Tables 2 and 4, respectively).
- b) In the school year 2020/2021 compared with the school year 2019/2020, **teaching staff** increased by 8.8% in kindergartens and by 1.3% in primary schools (Tables 2 and 4, respectively).
- c) The **number of pupils** enrolled in the school year 2020/2021 compared with the corresponding number in the school year 2019/2020 recorded a 6.3% increase in kindergartens and a 2.4% decrease in primary schools (Tables 3 and 5, respectively).
- d) The **number of graduates** in primary schools in the school year 2020/2021 compared with 2019/2020 decreased by 0.4% (Table 6).
- e) The **ratio of teaching staff to pupils**, in the school year 2020/2021, was 1 to 9.8 in kindergartens and 1 to 8.1 in primary schools; in the school year 2019/2020 the corresponding ratio was 1 to 10.0 and 1 to 8.4, respectively (Tables 2,3,4 and 5).
- f) The **Region of Attiki** accounted for the largest share of pupils enrolled in pre-primary and primary education schools with 34.4% for kindergartens and 35.6% for primary schools (Graphs 2 and 3, respectively).

**Information on methodological issues:**

Division of Sectoral Statistics  
Section of Statistics on Education & Sports  
Head of the Section: Dimitra Angelopoulou  
Tel: +30 213 135 2134  
e-mail: [d.angelopoulou@statistics.gr](mailto:d.angelopoulou@statistics.gr)

**Information for data provision:**

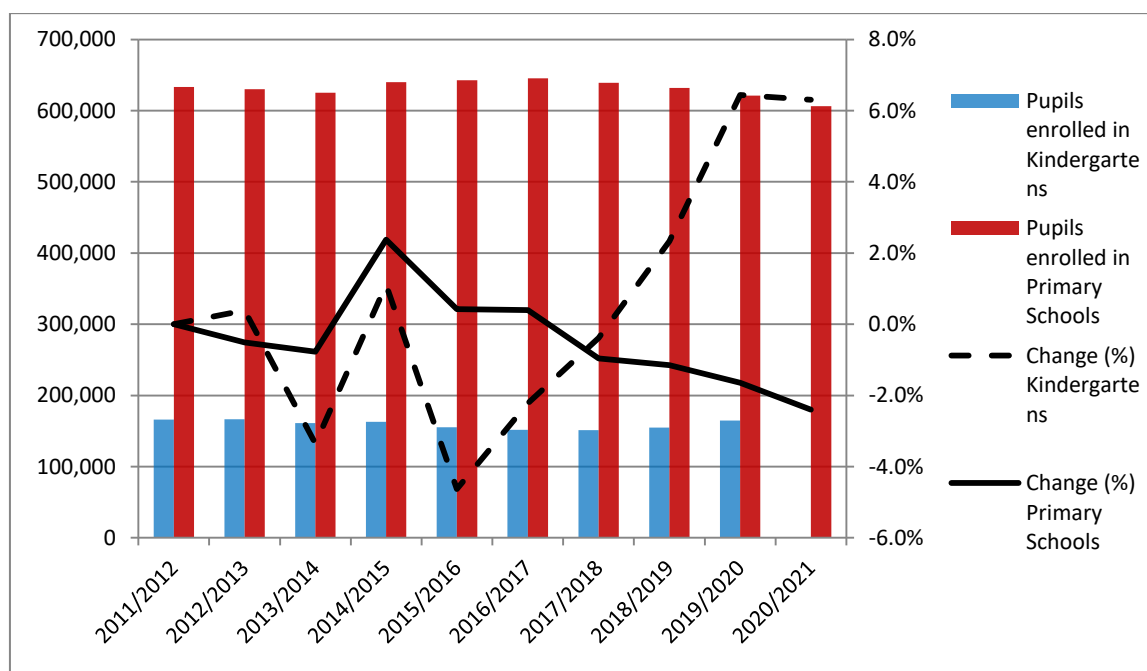
Tel. +30 213 135 2022, 2310  
email: [data.dissem@statistics.gr](mailto:data.dissem@statistics.gr)

Table 1 and Graph 1 depict the evolution of the pupil population of kindergartens and primary schools during school years 2011/2012 to 2020/2021.

**Table 1**  
**Evolution of pupil population in Pre-Primary and Primary Education 2011/2012 - 2020/2021**

School Year	Number of Pupils	
	Kindergartens	Primary Schools
2011/2012	165,931	633,291
2012/2013	166,576	630,043
2013/2014	160,994	625,165
2014/2015	162,781	640,001
2015/2016	155,243	642,707
2016/2017	151,804	645,250
2017/2018	151,225	639,037
2018/2019	154,744	631,700
2019/2020	164,716	621,298
2020/2021	175,108	606,400

**Graph 1**  
**Evolution of pupil population in Pre-Primary and Primary Education 2011/2012 - 2020/21**



## A. KINDERGARTENS

Tables 2 and 3 present data on the number of kindergartens, teaching staff and pupils enrolled.

**Table 2. School Units and Teaching Staff<sup>1</sup> by Type of School Unit and NUTS 2 Region (Kindergartens)**

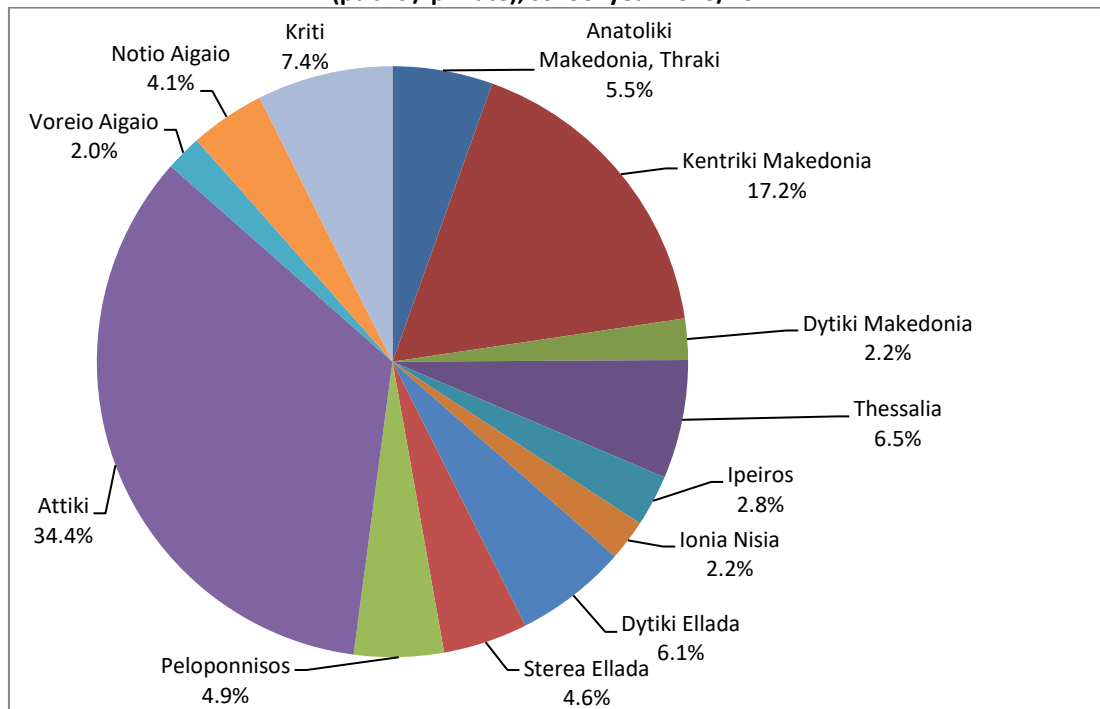
<i>By Type of School Unit</i>						
School Units	Number of School Units			Teaching Staff		
	2019/20	2020/21	Change (%)	2019/20	2020/21	Change (%)
Public	4,937	4,904	-0.7	15,391	16,615	8.0
Private	670	722	7.8	1,092	1,323	21.2
<b>TOTAL</b>	<b>5,607</b>	<b>5,626</b>	<b>0.3</b>	<b>16,483</b>	<b>17,938</b>	<b>8.8</b>
NUTS 2 Region	Number of School Units			Teaching Staff		
	2019/20	2020/21	Change (%)	2019/20	2020/21	Change (%)
Anatoliki Makedonia, Thraki	317	320	0.9	876	937	7.0
Kentriki Makedonia	988	987	-0.1	2,857	3,126	9.4
Dytiki Makedonia	188	184	-2.1	475	475	0.0
Thessalia	444	436	-1.8	1,112	1,142	2.7
Ipeiros	207	209	1.0	538	548	1.9
Ionia Nisia	144	146	1.4	456	457	0.2
Dytiki Ellada	398	389	-2.3	976	999	2.4
Sterea Ellada	311	312	0.3	837	849	1.4
Peloponnisos	333	337	1.2	853	878	2.9
Attiki	1,471	1,499	1.9	4,878	5,697	16.8
Voreio Aigaio	150	151	0.7	486	490	0.8
Notio Aigaio	225	224	-0.4	719	764	6.3
Kriti	431	432	0.2	1,420	1,576	11.0
<b>TOTAL</b>	<b>5,607</b>	<b>5,626</b>	<b>0.3</b>	<b>16,483</b>	<b>17,938</b>	<b>8.8</b>

<sup>1</sup> Teaching staff includes teachers classified as absent. "Absent teachers" are the teachers with a fixed post in the school unit, who are absent for more than 20 days (due to illness, training, maternity leave, etc) and their replacement is pending, as well as the teachers who are seconded to other administrative posts of the Ministry of Education and Religious Affairs or elsewhere.

**Table 3. Pupils enrolled by Type of School Unit and NUTS 2 Region (Kindergartens)**

<i>By Type of School Unit</i>									
School Units	Greece total			Males			Females		
	2019/20	2020/21	Change (%)	2019/20	2020/21	Change (%)	2019/20	2020/21	Change (%)
Public	146,302	154,311	5.5	75,028	79,541	6.0	71,274	74,770	4.9
Private	18,414	20,797	12.9	9,534	10,725	12.5	8,880	10,072	13.4
<b>TOTAL</b>	<b>164,716</b>	<b>175,108</b>	<b>6.3</b>	<b>84,562</b>	<b>90,266</b>	<b>6.7</b>	<b>80,154</b>	<b>84,842</b>	<b>5.8</b>
<i>By Region</i>									
NUTS 2 Region	Greece total			Males			Females		
	2019/20	2020/21	Change (%)	2019/20	2020/21	Change (%)	2019/20	2020/21	Change (%)
Anatoliki Makedonia, Thraki	9,040	9,600	6.2	4,607	4,979	8.1	4,433	4,621	4.2
Kentriki Makedonia	27,470	30,079	9.5	14,070	15,413	9.5	13,400	14,666	9.4
Dytiki Makedonia	4,107	3,937	-4.1	2,076	1,958	-5.7	2,031	1,979	-2.6
Thessalia	11,343	11,357	0.1	5,896	5,871	-0.4	5,447	5,486	0.7
Ipeiros	4,933	4,933	0.0	2,495	2,547	2.1	2,438	2,386	-2.1
Ionia Nisia	3,895	3,908	0.3	2,066	2,120	2.6	1,829	1,788	-2.2
Dytiki Ellada	10,727	10,735	0.1	5,500	5,528	0.5	5,227	5,207	-0.4
Stereia Ellada	7,960	8,104	1.8	4,117	4,165	1.2	3,843	3,939	2.5
Peloponnisos	8,441	8,586	1.7	4,301	4,411	2.6	4,140	4,175	0.8
Attiki	54,406	60,236	10.7	28,004	31,092	11.0	26,402	29,144	10.4
Voreio Aigaio	3,450	3,458	0.2	1,755	1,811	3.2	1,695	1,647	-2.8
Notio Aigaio	6,791	7,170	5.6	3,595	3,792	5.5	3,196	3,378	5.7
Kriti	12,153	13,005	7.0	6,080	6,579	8.2	6,073	6,426	5.8
<b>TOTAL</b>	<b>164,716</b>	<b>175,108</b>	<b>6.3</b>	<b>84,562</b>	<b>90,266</b>	<b>6.7</b>	<b>80,154</b>	<b>84,842</b>	<b>5.8</b>

**Graph 2**  
**Percentage distribution of pupils enrolled in Kindergartens, by NUTS 2 Region (public / private), school year 2020/2021**



## B. PRIMARY SCHOOLS

Tables 4, 5 and 6 present data on the number of primary schools, teaching staff, pupils enrolled and graduates.

**Tables 4. School Units and Teaching Staff<sup>2</sup> by Type of School Unit and NUTS 2 Region (Primary Schools)**

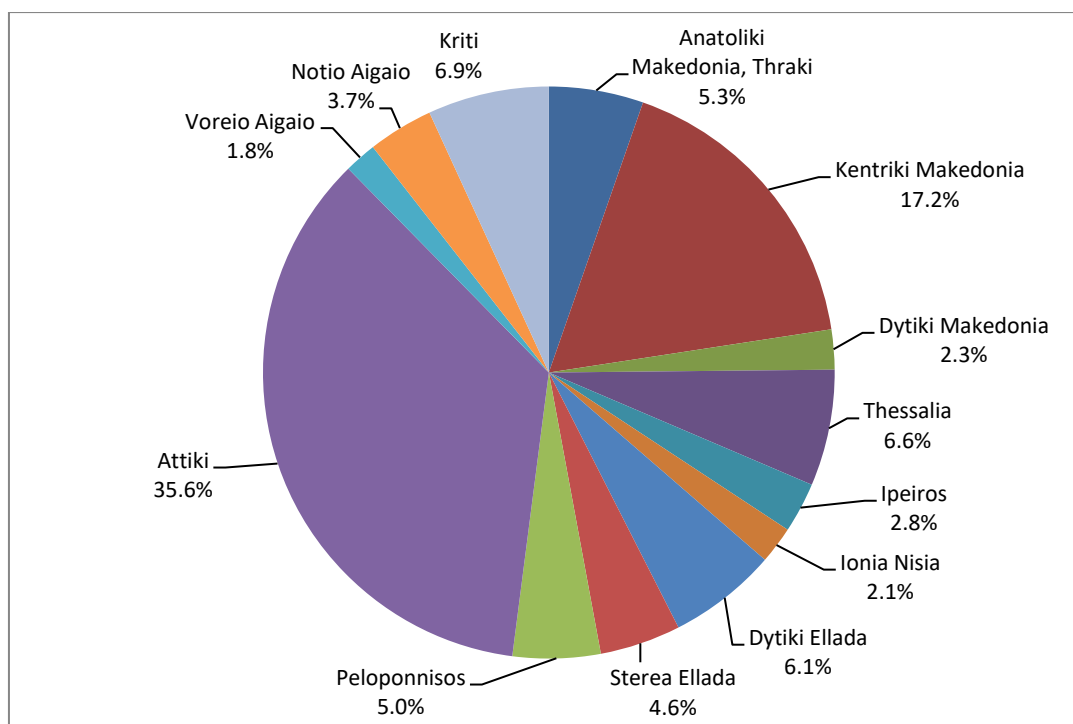
<i>By Type of School Unit</i>						
School Units	Number of School Units			Teaching Staff		
	2019/20	2020/21	Change (%)	2019/20	2020/21	Change (%)
<b>Public</b>	4,272	4,242	-0.7	70,035	70,720	1.0
<b>Private</b>	157	160	1.9	3,687	3,953	7.2
<b>TOTAL</b>	<b>4,429</b>	<b>4,402</b>	<b>-0.6</b>	<b>73,722</b>	<b>74,673</b>	<b>1.3</b>
NUTS 2 Region	Number of School Units			Teaching Staff		
	2019/20	2020/21	Change (%)	2019/20	2020/21	Change (%)
<b>Anatoliki Makedonia, Thraki</b>	336	327	-2.7	4,205	4,151	-1.3
<b>Kentriki Makedonia</b>	746	738	-1.1	12,973	12,883	-0.7
<b>Dytiki Makedonia</b>	155	154	-0.6	2,095	2,100	0.2
<b>Thessalia</b>	346	347	0.3	4,812	4,897	1.8
<b>Ipeiros</b>	184	185	0.5	2,278	2,294	0.7
<b>Ionia Nisia</b>	104	104	0.0	1,642	1,674	1.9
<b>Dytiki Ellada</b>	368	358	-2.7	4,608	4,545	-1.4
<b>Stereia Ellada</b>	286	284	-0.7	3,557	3,557	0.0
<b>Peloponnisos</b>	263	263	0.0	3,523	3,567	1.2
<b>Attiki</b>	1,006	1,007	0.1	24,148	24,998	3.5
<b>Voreio Aigaio</b>	135	135	0.0	1,686	1,682	-0.2
<b>Notio Aigaio</b>	184	184	0.0	2,719	2,766	1.7
<b>Kriti</b>	316	316	0.0	5,476	5,559	1.5
<b>TOTAL</b>	<b>4,429</b>	<b>4,402</b>	<b>-0.6</b>	<b>73,722</b>	<b>74,673</b>	<b>1.3</b>

<sup>2</sup> Teaching staff includes teachers classified as absent. "Absent teachers" are the teachers with a fixed post in the school unit, who are absent for more than 20 days (due to illness, training, maternity leave, etc) and their replacement is pending, as well as the teachers who are seconded to other administrative posts of the Ministry of Education and Religious Affairs or elsewhere.

**Table 5. Pupils enrolled by Type of School Unit and NUTS 2 Region (Primary Schools)**

<i>By Type of School Unit</i>									
School Units	Greece total			Males			Females		
	2019/20	2020/21	Change (%)	2019/20	2020/21	Change (%)	2019/20	2020/21	Change (%)
Public	582,271	564,836	-3.0	298,599	289,665	-3.0	283,672	275,171	-3.0
Private	39,027	41,564	6.5	20,162	21,391	6.1	18,865	20,173	6.9
<b>TOTAL</b>	<b>621,298</b>	<b>606,400</b>	<b>-2.4</b>	<b>318,761</b>	<b>311,056</b>	<b>-2.4</b>	<b>302,537</b>	<b>295,344</b>	<b>-2.4</b>
<i>By Region</i>									
NUTS 2 Region	Greece total			Males			Females		
	2019/20	2020/21	Change (%)	2019/20	2020/21	Change (%)	2019/20	2020/21	Change (%)
Anatoliki Makedonia, Thraki	33,409	32,397	-3.0	17,169	16,630	-3.1	16,240	15,767	-2.9
Kentriki Makedonia	108,297	104,539	-3.5	55,394	53,409	-3.6	52,903	51,130	-3.4
Dytiki Makedonia	14,172	13,695	-3.4	7,278	7,029	-3.4	6,894	6,666	-3.3
Thessalia	40,970	39,887	-2.6	21,056	20,509	-2.6	19,914	19,378	-2.7
Ipeiros	17,495	17,261	-1.3	9,048	8,844	-2.3	8,447	8,417	-0.4
Ionia Nisia	13,020	12,730	-2.2	6,705	6,580	-1.9	6,315	6,150	-2.6
Dytiki Ellada	38,636	37,279	-3.5	19,920	19,187	-3.7	18,716	18,092	-3.3
Stereia Ellada	28,507	27,740	-2.7	14,736	14,360	-2.6	13,771	13,380	-2.8
Peloponnisos	30,956	30,060	-2.9	15,908	15,378	-3.3	15,048	14,682	-2.4
Attiki	219,024	215,798	-1.5	112,199	110,707	-1.3	106,825	105,091	-1.6
Voreio Aigaio	11,193	11,048	-1.3	5,733	5,637	-1.7	5,460	5,411	-0.9
Notio Aigaio	22,776	22,400	-1.7	11,599	11,464	-1.2	11,177	10,936	-2.2
Kriti	42,843	41,566	-3.0	22,016	21,322	-3.2	20,827	20,244	-2.8
<b>TOTAL</b>	<b>621,298</b>	<b>606,400</b>	<b>-2.4</b>	<b>318,761</b>	<b>311,056</b>	<b>-2.4</b>	<b>302,537</b>	<b>295,344</b>	<b>-2.4</b>

**Graph 3**  
Percentage distribution of pupils enrolled in Primary Schools  
by NUTS 2 Region, school year 2020/2021



**Table 6. Graduates by Type of School Unit and NUTS 2 Region (Primary Schools)**

<i>By Type of School Unit</i>			
School Units	Graduates		
	2019/20	2020/21	Change (%)
<b>Public</b>	103,051	101,975	-1.0
<b>Private</b>	5,918	6,574	11.1
<b>TOTAL</b>	<b>108,969</b>	<b>108,549</b>	<b>-0.4</b>
<i>By Region</i>			
NUTS 2 Region	Graduates		
	2019/20	2020/21	Change (%)
<b>Anatoliki Makedonia, Thraki</b>	5,751	5,880	2.2
<b>Kentriki Makedonia</b>	19,264	19,187	-0.4
<b>Dytiki Makedonia</b>	2,527	2,518	-0.4
<b>Thessalia</b>	7,456	7,280	-2.4
<b>Ipeiros</b>	3,001	3,156	5.2
<b>Ionia Nisia</b>	2,317	2,240	-3.3
<b>Dytiki Ellada</b>	6,754	6,678	-1.1
<b>Stereia Ellada</b>	4,974	4,897	-1.5
<b>Peloponnisos</b>	5,378	5,471	1.7
<b>Attiki</b>	38,222	37,963	-0.7
<b>Voreio Aigaio</b>	1,924	1,900	-1.2
<b>Notio Aigaio</b>	3,827	3,887	1.6
<b>Kriti</b>	7,574	7,492	-1.1
<b>TOTAL</b>	<b>108,969</b>	<b>108,549</b>	<b>-0.4</b>

## EXPLANATORY NOTES

**Surveys on Pre-Primary and Primary Education** Pre-primary and Primary Education includes Kindergartens and Primary Schools. The relevant surveys are conducted on a yearly basis, with the aim of collecting data on the number of pupils enrolled, the school units and the number of teaching staff.

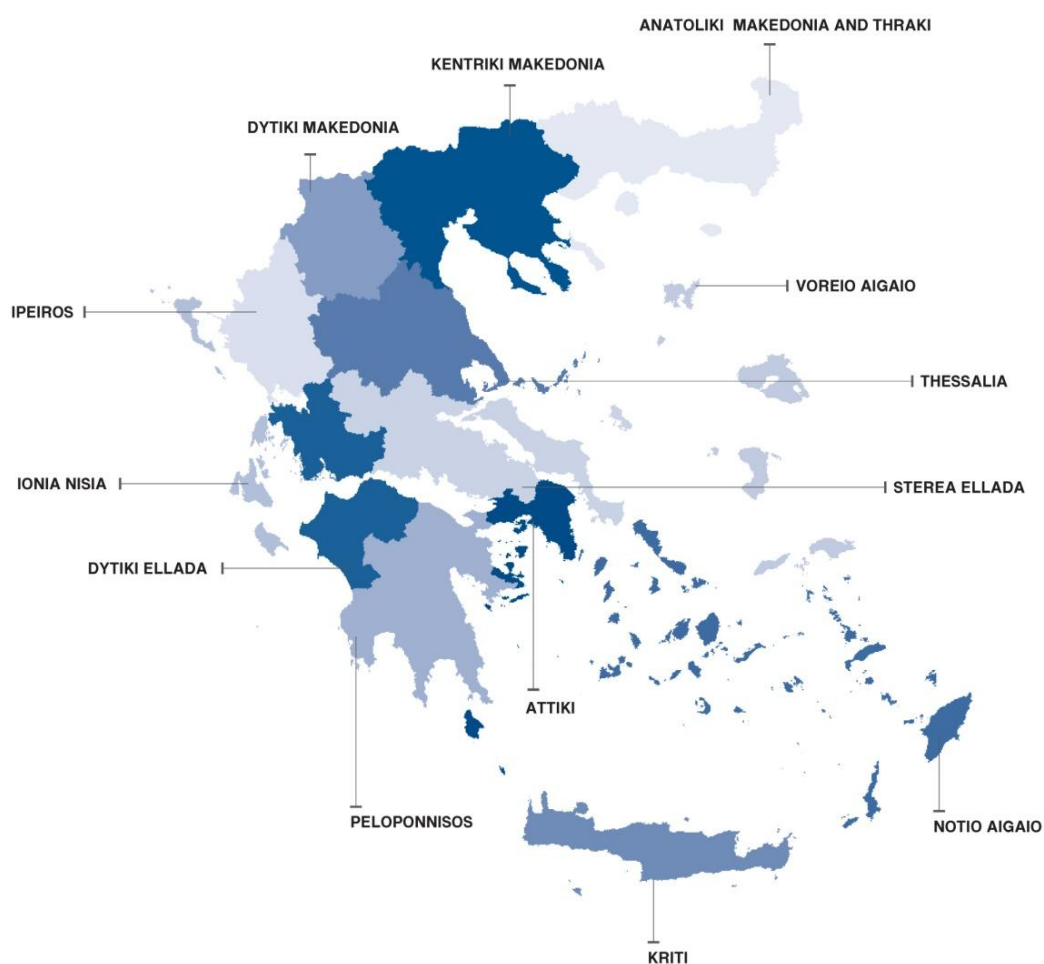
**Legal Framework** The surveys are conducted by virtue of Regulation 452/2008 of the European Parliament and the Council and implementing Regulation 912/2013 of the European Commission.

**Statistical Units** The statistical units are the school units.

**Coverage** Greece total.

**Geographical Classification** The geographical classification is based on Nomenclature of Territorial Units for Statistics.

**Map of the 13 Regions (NUTS 2) of Greece**





<b>Dissemination of results</b>	The data are posted on a yearly basis on the website of ELSTAT and are published in a relevant Press Release.
<b>Reference period</b>	The data of the surveys refer to the end of school year 2020/2021. For comparability reasons, the data of the end of the previous school year 2019/2020 are also provided.
<b>Methodology and coverage</b>	<p>Until the school year 2013/2014, the surveys on Pre-Primary and Primary Education used to be census, yearly surveys and they were conducted by ELSTAT.</p> <p>For the school year 2014/2015 onwards, data of these surveys are collected as follows:</p> <ul style="list-style-type: none"> <li>– As regards public school units, the data are extracted from the “live” e-platform “MySchool” of the Ministry of Education and Religious Affairs.</li> <li>– As regards private school units, data are collected from the questionnaires that are sent to the relevant school units.</li> </ul>
<b>References</b>	<p>More information, such as tables with the survey results, samples of questionnaires, etc, on the Survey on Pre-Primary and Primary Education can be found on the webpage of ELSTAT <a href="http://www.statistics.gr">www.statistics.gr</a> and at the link: “Statistics” / Population and Social Conditions / Education / Primary Education / Kindergartens (Beginning – End of school year) or Primary Schools (Beginning – End of school year)”.</p>