



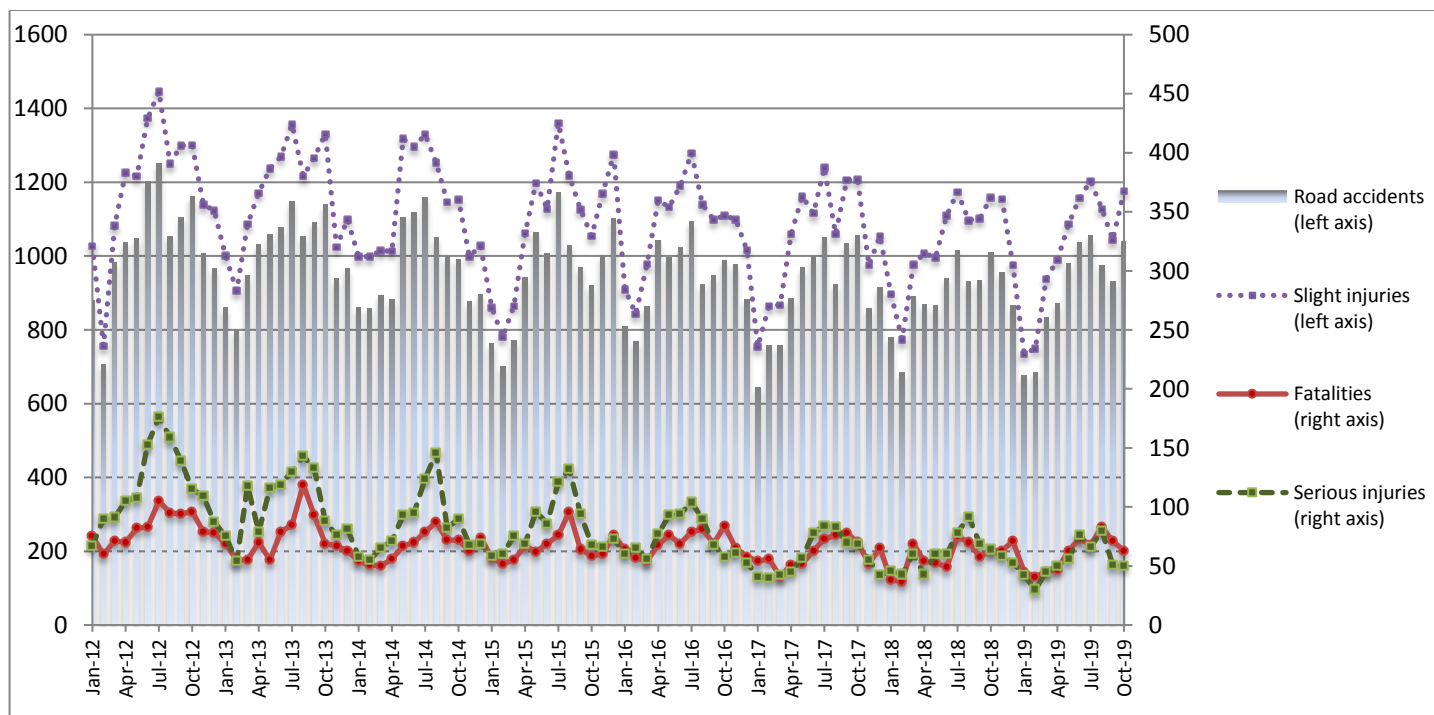
PRESS RELEASE

ROAD TRAFFIC ACCIDENTS: October 2019

The Hellenic Statistical Authority (ELSTAT) announces provisional¹ data on Road Traffic Accidents for October 2019. In particular, the road traffic accidents which occurred in Greece, resulting in death or injury, increased by 2.9% in comparison with the corresponding month of 2018 (1,039 road accidents in October 2019, against 1,010 road accidents in October 2018).

The casualties of the injury-causing accidents that occurred in October 2019 were as follows: 63 deaths, 50 serious injuries and 1,176 slight injuries. In contrast, in October 2018 the corresponding figures were: 63 deaths, 64 serious injuries and 1,158 slight injuries. Therefore, road accident casualties in October 2019 remained stable for deaths, decreased by 21.9% for serious injuries and increased by 1.6% for slight injuries.

**Graph 1: Road traffic accidents and casualties,
January 2012 - October 2019**



Provisional data for the period January 2019 - October 2019

Information on methodological issues:

Sectoral Statistics Division
Justice Statistics Section
Dimitra Athanasopoulou
Tel: +30 213 135 2135
Fax : +30 213 135 2764
e-mail: justistat@statistics.gr

Information for data provision:

Tel: 213 135 2022, 2308, 2310
e-mail: data.dissem@statistics.gr

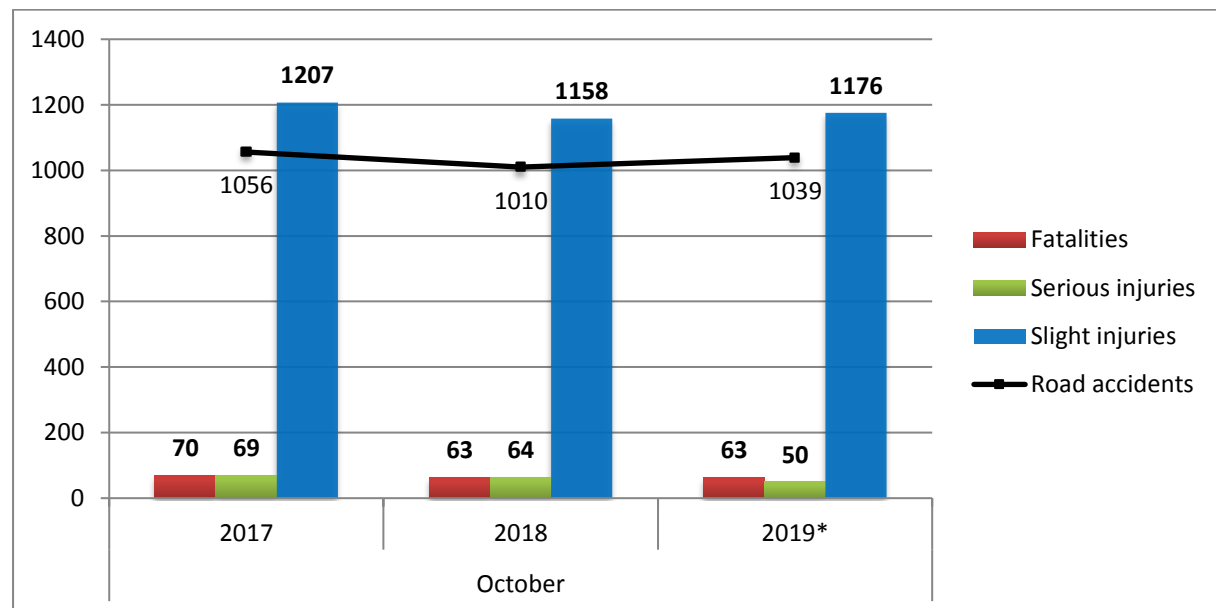
¹ Data for the reference year are provisional until the finalisation of the annual data, which become final 10 months after the end of the reference year. During these 10 months the provisional data are updated on the basis of the data of the Road Accident Forms which are transmitted to ELSTAT by Police Authorities.

Table 1: Road traffic accidents and casualties, October 2017 - 2019*

	October				
	2017	2018	2018/2017 (%)	2019*	2019*/2018 (%)
Road accidents	1,056	1,010	-4.4	1,039	2.9
Fatalities	70	63	-10.0	63	0.0
Total injuries	1,276	1,222	-4.2	1,226	0.3
Serious injuries	69	64	-7.2	50	-21.9
Slight injuries	1,207	1,158	-4.1	1,176	1.6

* Provisional data

Graph 2: Road traffic accidents and casualties, October 2017 - 2019*



* Provisional data

Table 2: Road traffic accidents and casualties, by region and department, October 2018 and 2019*

Region and department	Road accidents			Fatalities			Serious injuries			Slight injuries		
	2018	2019*	%	2018	2019*	%	2018	2019*	%	2018	2019*	%
Greece Total	1,010	1,039	2.9	63	63	0.0	64	50	-21.9	1,158	1,176	1.6
Anatoliki Makedonia and Thraki (East Macedonia and Thrace)	35	34	-2.9	18	1	-94.4	8	0	-100.0	33	36	9.1
Drama	6	9	50.0	3	0		0	0		5	9	
Evros	6	5	-16.7	2	0		1	0		3	5	
Kavala	17	9	-47.1	11	0		6	0		18	10	
Xanthi	3	5	66.7	2	1		1	0		3	4	
Rodopi	3	6	100.0	0	0		0	0		4	8	
Kentriki Makedonia (Central Macedonia)	173	159	-8.1	2	13	550.0	10	3	-70.0	213	205	-3.8
Imathia	6	3	-50.0	0	2		1	0		7	2	
Thessaloniki	143	136	-4.9	0	8		5	2		179	169	
Kilkis	5	4	-20.0	0	0		1	0		4	6	
Pella	4	3	-25.0	0	1		0	1		5	8	
Pieria	2	1	-50.0	0	0		0	0		2	1	
Serres	7	5	-28.6	1	2		1	0		7	4	
Chalkidiki	6	7	16.7	1	0		2	0		9	15	
Dytiki Makedonia (West Macedonia)	4	10	150.0	1	1	0.0	0	2	-	7	8	14.3
Grevena	0	0	-	0	0		0	0		0	0	
Kastoria	1	1	0.0	0	0		0	0		1	1	
Kozani	1	8	700.0	0	1		0	2		3	6	
Florina	2	1	-50.0	1	0		0	0		3	1	
Ipeiros (Epirus)	14	8	-42.9	4	1	-75.0	1	3	200.0	10	5	-50.0
Arta	1	3	200.0	2	0		0	1		0	2	
Thesprotia	7	2	-71.4	1	1		1	0		5	1	
Ioannina	3	2	-33.3	1	0		0	1		2	2	
Preveza	3	1	-66.7	0	0		0	1		3	0	
Thessalia (Thessaly)	34	17	-50.0	2	4	100.0	9	4	-55.6	34	21	-38.2
Karditsa	5	7	40.0	0	3		4	0		3	7	
Larissa	16	4	-75.0	0	0		4	1		16	9	
Magnissia	9	5	-44.4	1	0		1	3		11	5	
Trikala	4	1	-75.0	1	1		0	0		4	0	
Ionian Nisia (Ionian Islands)	11	14	27.3	1	1	0.0	2	3	50.0	10	12	20.0
Zakynthos	2	5	150.0	1	0		1	0		0	5	
Kerkyra	3	7	133.3	0	1		1	3		2	4	
Kefallinia	3	0	-100.0	0	0		0	0		4	0	
Lefkada	3	2	-33.3	0	0		0	0		4	3	

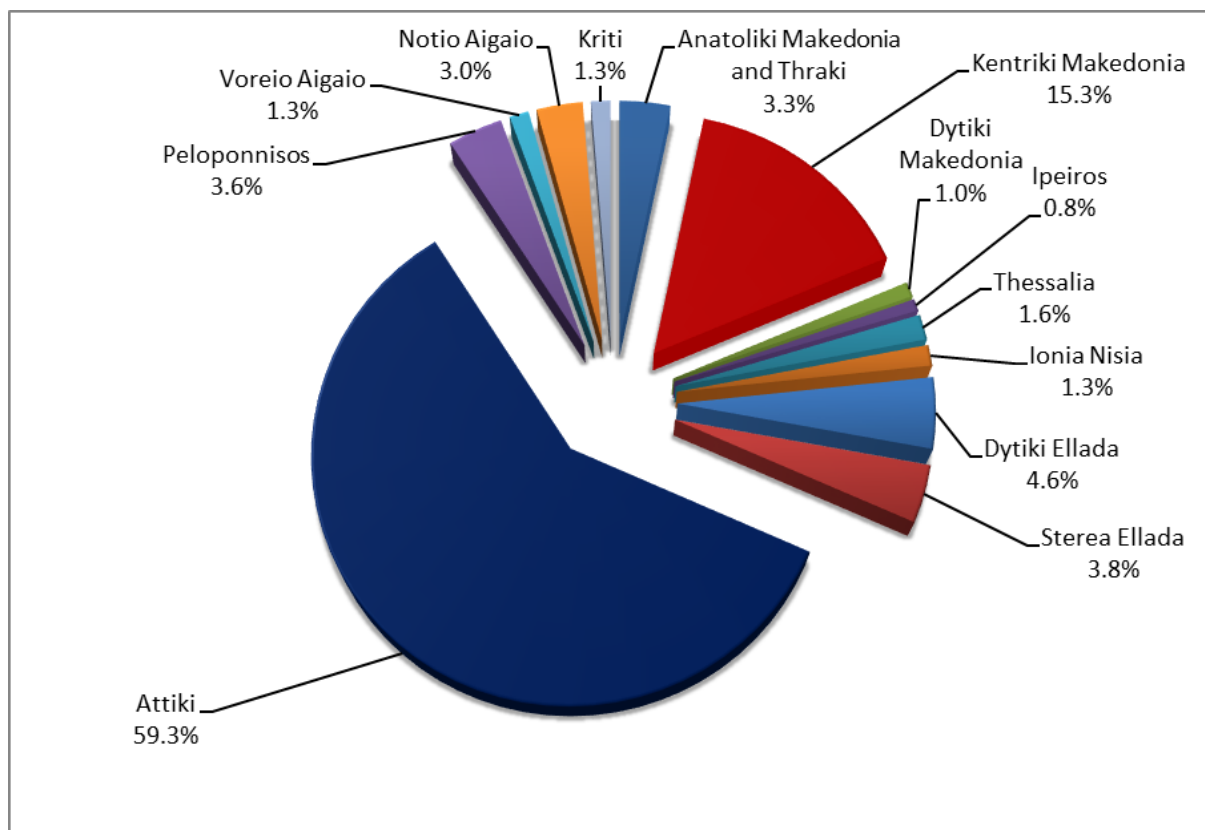
* Provisional data

Table 2: Road traffic accidents and casualties, by region and department, October 2018 and 2019* (Continued)

Region and department	Road accidents			Fatalities			Serious injuries			Slight injuries		
	2018	2019*	%	2018	2019*	%	2018	2019*	%	2018	2019*	%
Dytiki Ellada (West Greece)	61	48	-21.3	6	6	0.0	7	4	-42.9	76	51	-32.9
Etolia & Akarnania	25	22	-12.0	3	3		1	0		35	25	
Achaia	28	18	-35.7	2	2		4	2		34	21	
Ilia	8	8	0.0	1	1		2	2		7	5	
Stereia Ellada	48	39	-18.8	3	2	-33.3	3	3	0.0	66	49	-25.8
Viotia	9	4	-55.6	1	1		0	0		14	5	
Evia	17	24	41.2	1	1		1	1		20	27	
Evrytania	0	0	-	0	0		0	0		0	0	
Fthiotida	18	6	-66.7	1	0		2	2		24	11	
Fokida	4	5	25.0	0	0		0	0		8	6	
Attiki (Attica)	521	616	18.2	10	18	80.0	17	14	-17.6	597	683	14.4
Peloponnisos (Peloponnese)	36	37	2.8	4	9	125.0	1	3	200.0	41	39	-4.9
Argolida	8	8	0.0	1	3		0	2		11	9	
Arkadia	7	6	-14.3	2	3		0	0		9	7	
Korinthia	18	16	-11.1	1	2		1	1		17	17	
Lakonia	1	2	100.0	0	0		0	0		1	2	
Messinia	2	5	150.0	0	1		0	0		3	4	
Voreio Aigaio (North Aegean)	21	13	-38.1	1	0	-100.0	1	0	-100.0	26	16	-38.5
Lesvos	15	10	-33.3	0	0		0	0		21	13	
Samos	0	2	-	0	0		0	0		0	2	
Chios	6	1	-83.3	1	0		1	0		5	1	
Notio Aigaio (South Aegean)	38	31	-18.4	4	4	0.0	4	5	25.0	35	34	-2.9
Dodekanissos	23	14	-39.1	2	2		2	1		22	16	
Kyklades	15	17	13.3	2	2		2	4		13	18	
Kriti (Crete)	14	13	-7.1	7	3	-57.1	1	6	500.0	10	17	70.0
Iraklio	8	4	-50.0	3	0		1	2		4	9	
Lassithi	1	2	100.0	1	0		0	0		1	2	
Rethymno	2	2	0.0	0	1		0	1		2	3	
Chania	3	5	66.7	3	2		0	3		3	3	

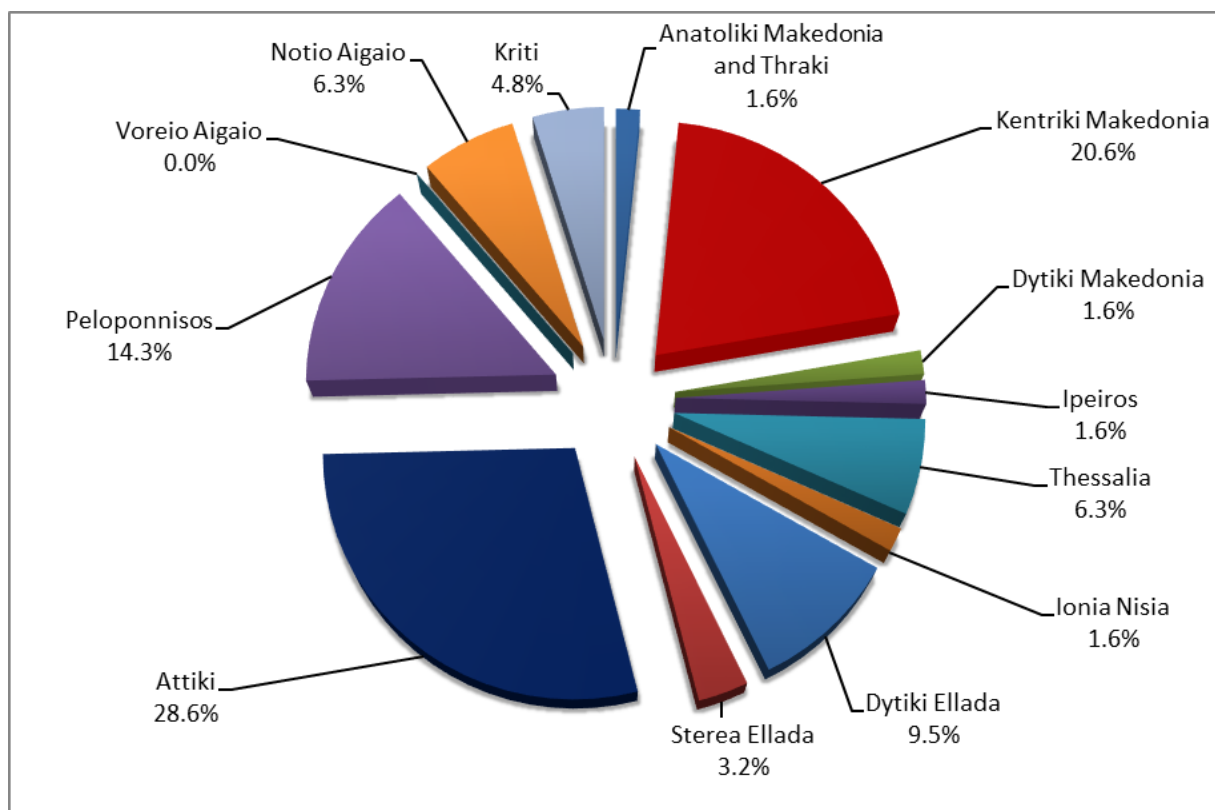
* Provisional data

**Graph 3: Road traffic accidents by region,
October 2019 ***



* Provisional data

**Graph 4: Fatalities by region,
October 2019 ***



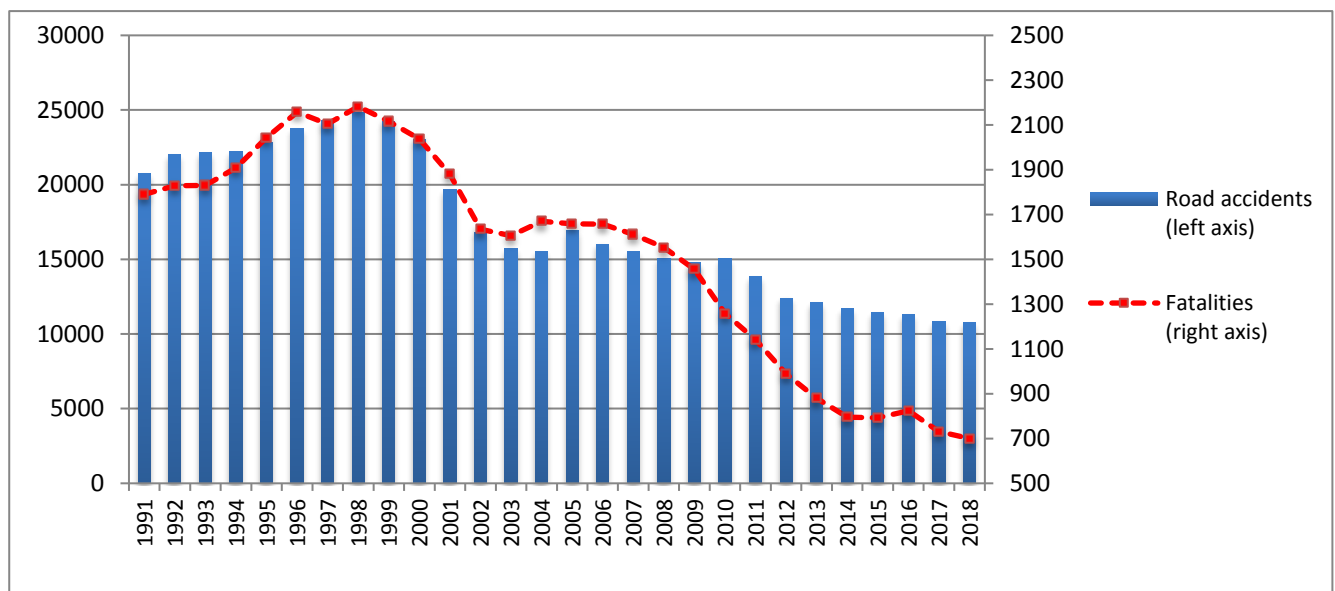
* Provisional data

Table 3: Road traffic accidents and casualties, January - October 2017 - 2019*

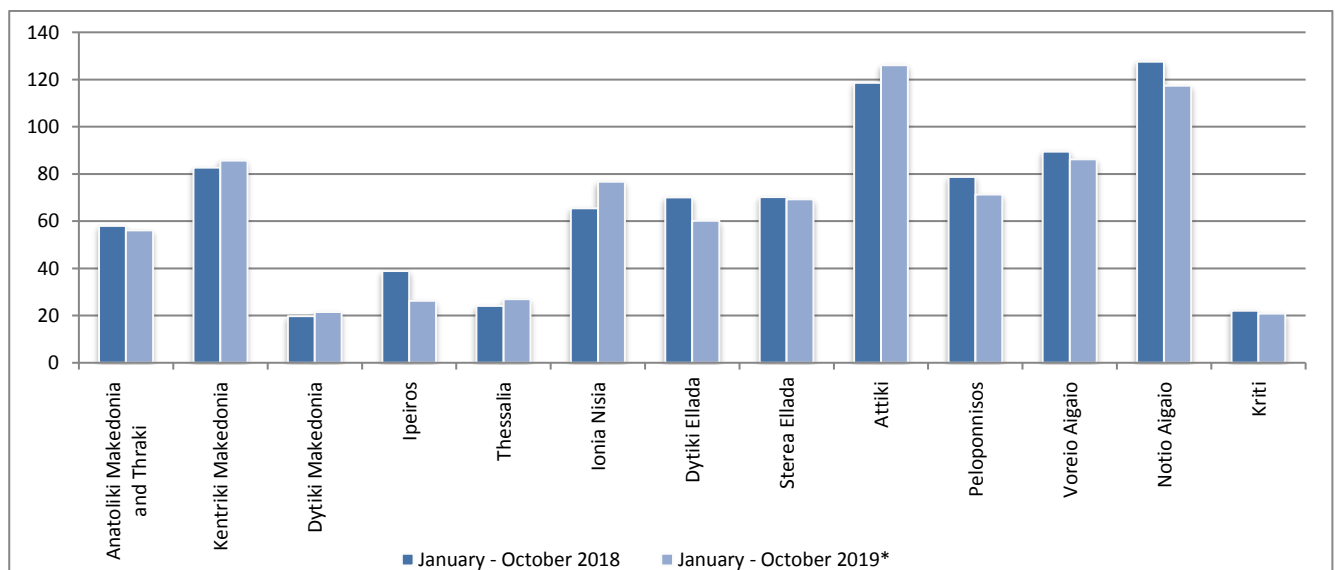
	2017		2018		2019 *
	January - October	Total year	January - October	Total year	January - October
Road accidents	9,076	10,848	8,917	10,737	9,083
Annual change (%)			-1.8	-1.0	1.9
Fatalities	614	731	566	700	599
Annual change (%)			-7.8	-4.2	5.8
Serious injuries	609	706	615	727	546
Annual change (%)			1.0	3.0	-11.2
Slight injuries	10,536	12,565	10,292	12,422	10,205
Annual change (%)			-2.3	-1.1	-0.8

* Provisional data

Graph 5: Total road traffic accidents and fatalities, 1991-2018

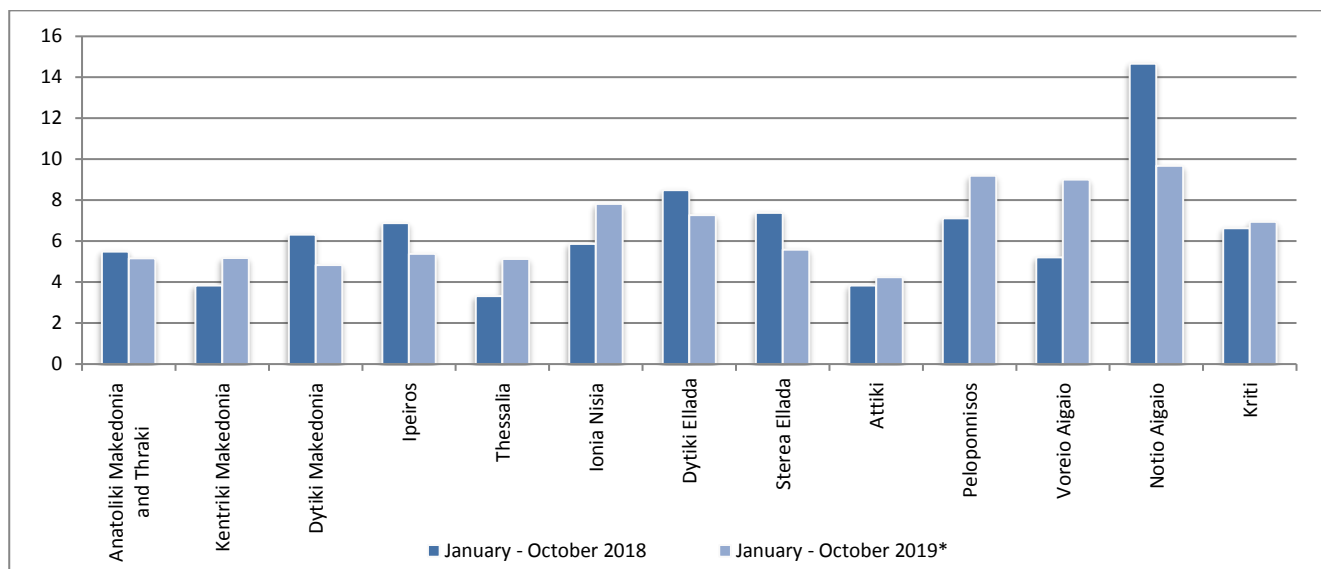


Graph 6: Road traffic accidents per 100,000 inhabitants

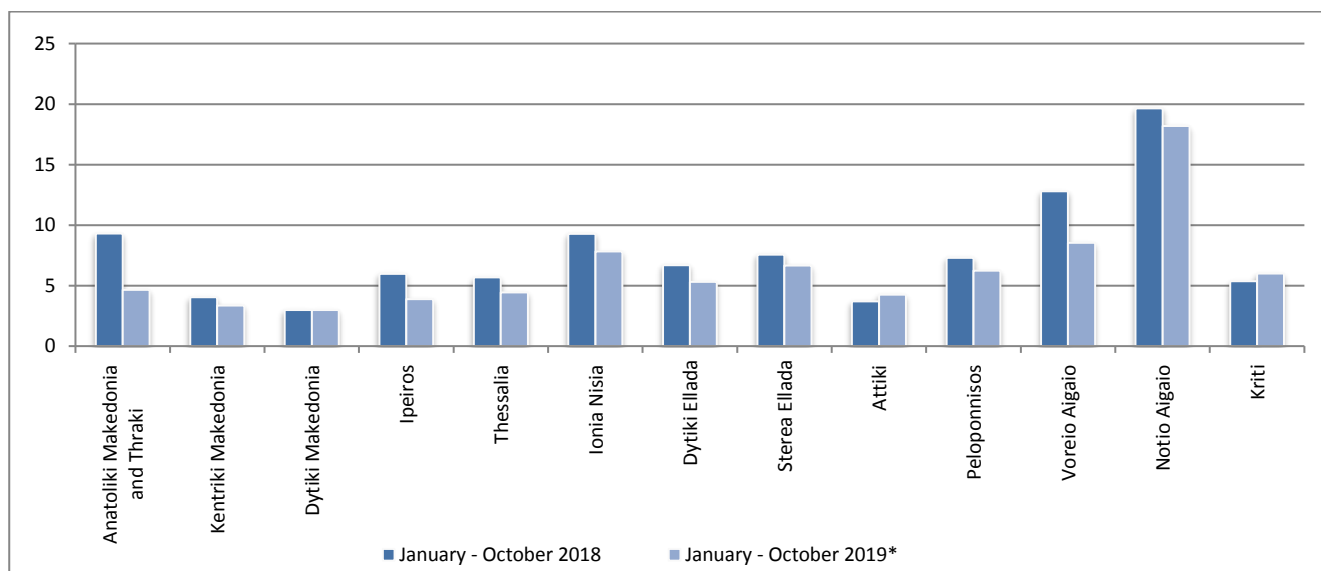


* Provisional data

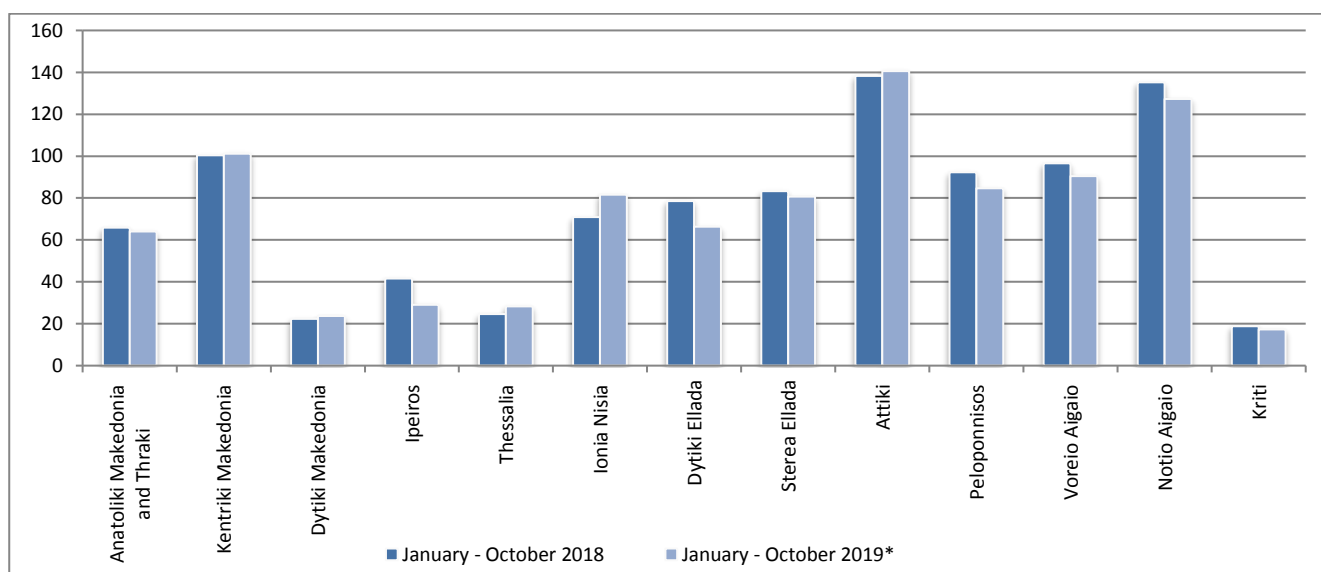
Graph 7: Fatalities per 100,000 inhabitants



Graph 8: Serious injuries per 100,000 inhabitants



Graph 9: Slight injuries per 100,000 inhabitants



* Provisional data

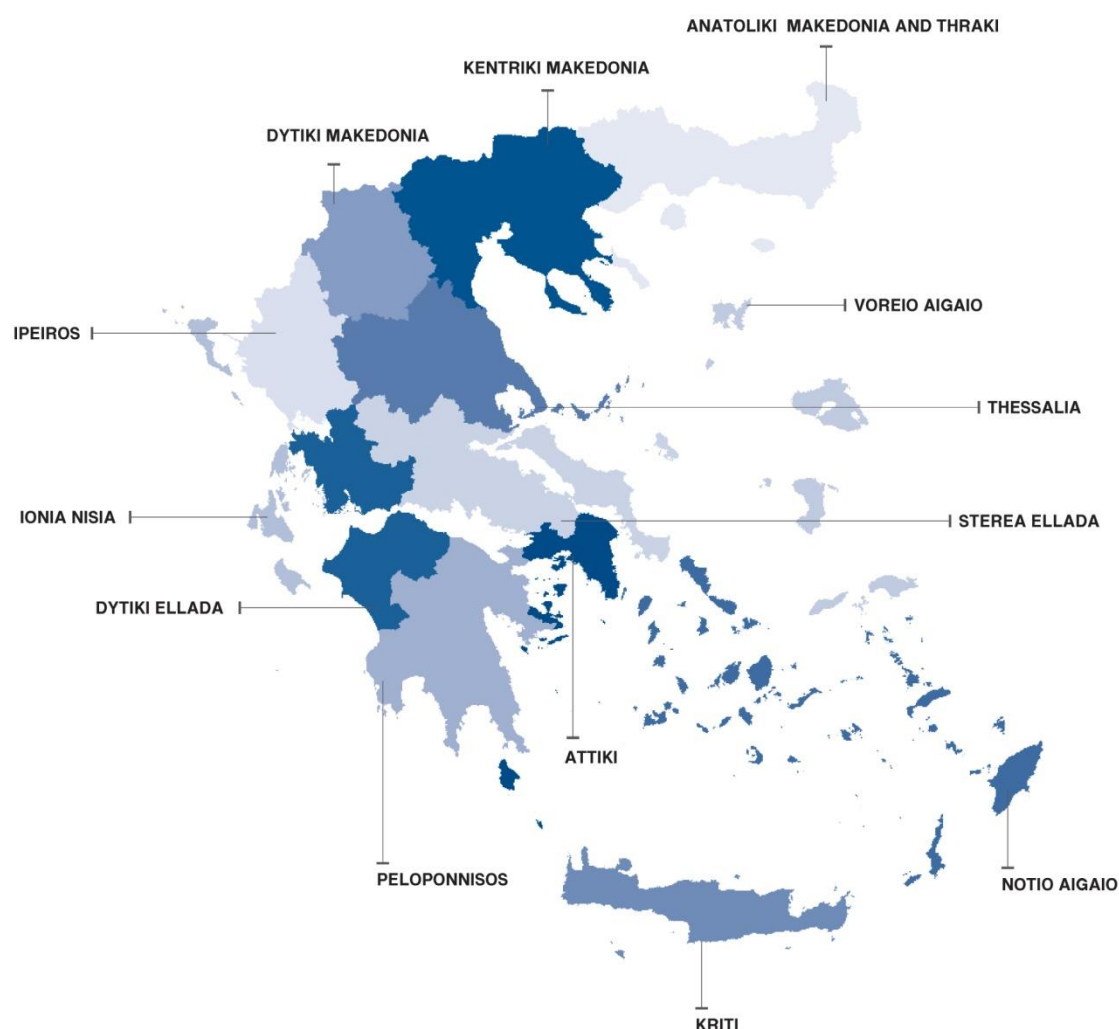
EXPLANATORY NOTES

Survey on Road Traffic Accidents

The Survey on Road Traffic Accidents is conducted on a monthly basis and it records, for each region (see map) and department of Greece and for each month separately, the number of accidents resulting in death or injury, as well as the number of persons injured by categories (drivers, passengers, pedestrians).

On a yearly basis, road traffic accidents are further analyzed. The competent agencies for filling in/collecting the forms on road accidents are the local Police Authorities and the local Port Authorities of Greece.

The lower level of analysis for the place where an injury road accident occurred is the Municipal – Local Commune, which is described by a 8-digit geographic code. Data are collected on a monthly basis. The main variables are the following: place of accident, kind of road, casualties, conditions of road surface and type of road.



Legal basis

The Survey on Road Traffic Accidents is governed by Council Decision 93/704 of the European Community.

Reference period

Monthly.

Availability of data

Provisional data are available 2 months after the reference month.
Final data are available 10 months after the reference year.

National definitions **Road accident** (injury accident): Any accident involving at least one road motor vehicle in motion on a public road or square to which the public has access (excluding yards, industrial sites or vehicle depot of public transport enterprises), resulting in at least one injured or killed person. Accidents with only material damages are not included.

Fatality (Death): Any person killed immediately or dying within 30 days as a result of an injury accident (This national definition applies since 01.01.1996)

Person injured: Any person who sustained an injury as result of an injury accident, and who normally needs medical treatment.

Serious injury: Any person who sustained an injury as result of an injury accident, such as brain damages, mutilation, multiple injuries, which may result in lack of awareness or which are life-threatening.

Slight injury: Any person injured who sustained minor and not life-threatening injuries.

Vehicle: Include motor vehicles, trolleybuses, motorcycles, bicycles, motorbikes, agricultural and road making machines, animal and hand-drawn vehicles. Railway vehicles are excluded, unless the road accident involves at least one of the aforementioned types of vehicles and therefore, railway vehicles are considered vehicles.

Methodology The forms of the survey are filled in by the local Police Authorities and the local Port Authorities as well.

References More information about Road Traffic Accidents is available on ELSTAT's website and more specifically at the link: www.statistics.gr > Population, Social Conditions > Accidents > Road Traffic Accidents.
It should be noted that previous press releases and time series are available on ELSTAT's website: www.statistics.gr