



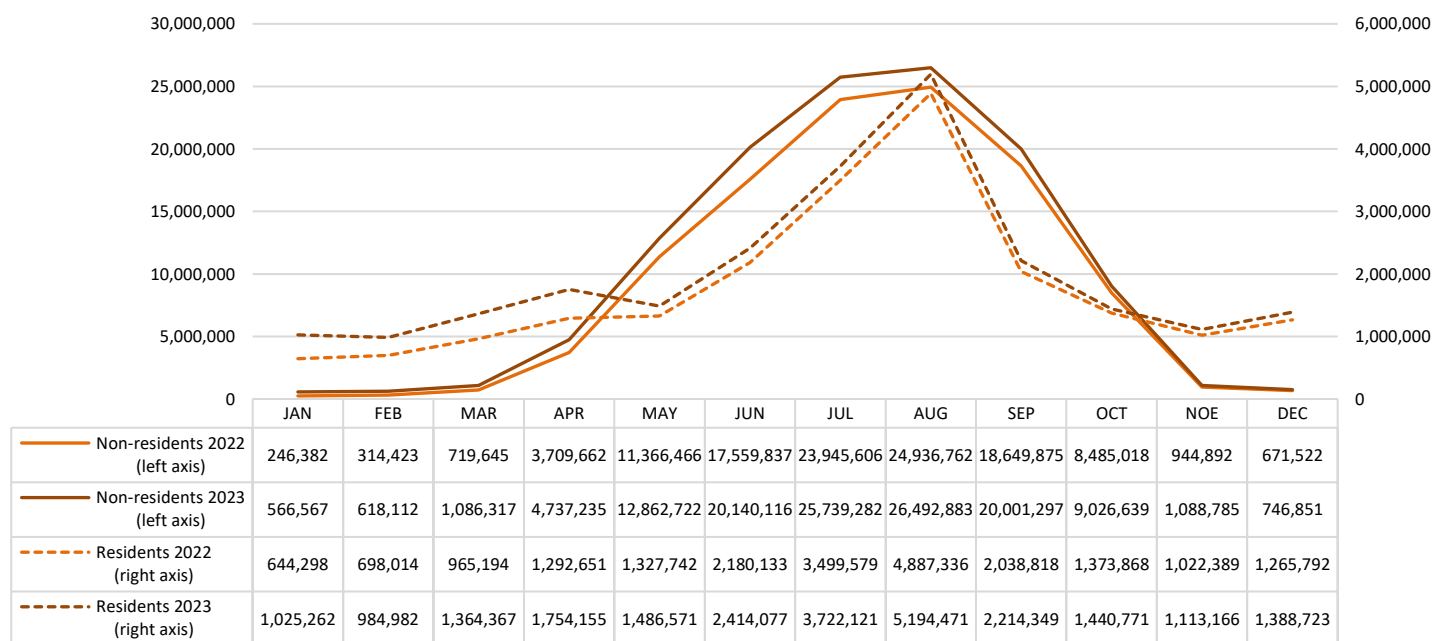
## ARRIVALS AND NIGHTS SPENT IN HOTELS, SIMILAR ESTABLISHMENTS, TOURIST CAMPSITES AND SHORT-STAY ACCOMMODATION ESTABLISHMENTS Year 2023 (final data)

According to the results of the survey on Arrivals and Nights Spent in hotels, similar establishments and tourist campsites and of short-stay accommodation establishments, conducted by the Hellenic Statistical Authority (ELSTAT), for the total of these establishments, in 2023 compared with 2022, an increase is recorded both in arrivals, by 13.9%, (Tables 1 and 3) and in nights spent, by 10.9% (Tables 2 and 4).

More specifically, in 2023 compared with 2022, an increase of 13.7% and 10.4% is recorded in arrivals and nights spent by non-residents, respectively, while arrivals and nights spent by residents recorded an increase of 14.4% and 13.7%, respectively (Graph 1).

The annual occupancy rate of the bed places in hotels and similar establishments (excluding tourist campsites and short stay accommodation establishments) amounted to 54.7% in 2023, compared with 51.1% in 2022 (Graphs 17 and 18). The capacity by category of hotel accommodation establishment is presented in Table 5.

**Graph 1. Evolution of nights spent of residents and non-residents  
in hotels, similar establishments, tourist campsites and short stay accommodation establishments, by month 2022-2023**



### Information on methodological issues:

Sectoral Statistics Division  
Tourism and Culture Statistics Section  
Head of the Section: Eleni Papadopoulou  
Tel: +30 213 135 2168  
e-mail: [e.papadopoulou@statistics.gr](mailto:e.papadopoulou@statistics.gr)

### Information for data provision:

Tel. +30 213 135 2022, 2308, 2310  
e-mail: [data.dissem@statistics.gr](mailto:data.dissem@statistics.gr)

During 2023, the largest share of arrivals and nights spent is observed in hotel accommodation establishments (79.6% and 76.4%, respectively) (Graph 3).

According to the monthly distribution of the data, 56.9% of the arrivals and 63.7% of the nights spent, in hotels, similar establishments, tourist campsites and short-stay accommodation establishments of Greece, are recorded during the period of July to October (Tables 1 and 2, Graph 5, 6 and 7).

As regards the breakdown of the survey data by NUTS 2 Region, an increase of arrivals is observed in arrivals and nights spent, in absolute values, in Attiki (19.7% in arrivals and 20.3% in nights spent), Notio Aigaio (12.1% in arrivals and 6.1% in nights spent), Ionia Nisia (19.6% in arrivals and 19.7% in nights spent) and Kriti (7.2% both in arrivals and in nights spent) (Tables 3 and 4, Graphs 8, 9 and 10).

In 2023, the largest share of arrivals and nights spent in hotels, similar establishments, short-stay accommodation establishments and tourist campsites, is recorded by non-residents, i.e. 73.4% of arrivals and 83.6% of nights spent (Graph 4).

In 2023, the largest share of arrivals and nights spent by non-residents in hotels, similar establishments, short-stay accommodation establishments and tourist campsites is recorded by customers (guests) whose country of residence is in Europe (79.5% of arrivals and 88.4% of nights spent) with a significant contribution from the EU Members States (54.7% of arrivals and 60.0% of nights spent) (Tables 6 and 7).

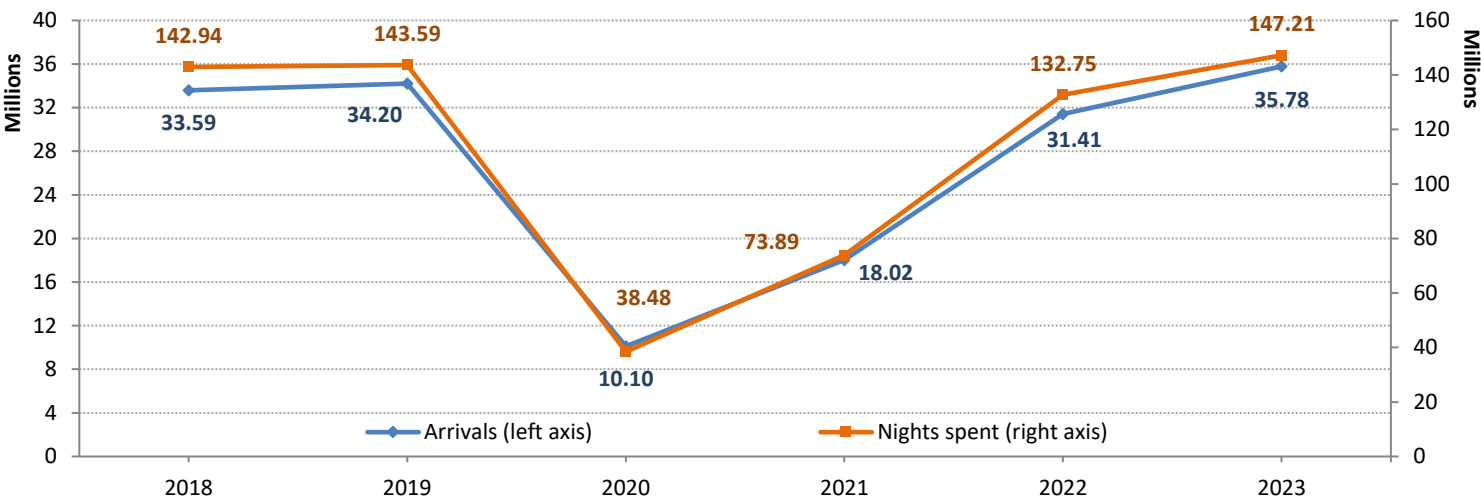
The greatest contribution concerning arrivals is recorded for Germany (13.2% of arrivals and 16.9% of nights spent) and for France (7.2% of arrivals and 6.3% of nights spent). As regards the rest of the European countries, the greatest contribution is recorded for the United Kingdom (15.5% of arrivals and 18.8% of nights spent) (Tables 5 and 6).

When comparing the data of arrivals and nights spent in hotels, similar establishments, short-stay accommodation establishments and tourist campsites by country of residence of the year 2023 with the corresponding data of the year 2022, an increase of arrivals, in absolute values, is recorded, among EU Members States, for Italy (18.5% in arrivals and 16.1% in nights spent), Poland (21.1% in arrivals and 14.8% in nights spent) and France (5.4% in arrivals and 3.9% in nights spent).

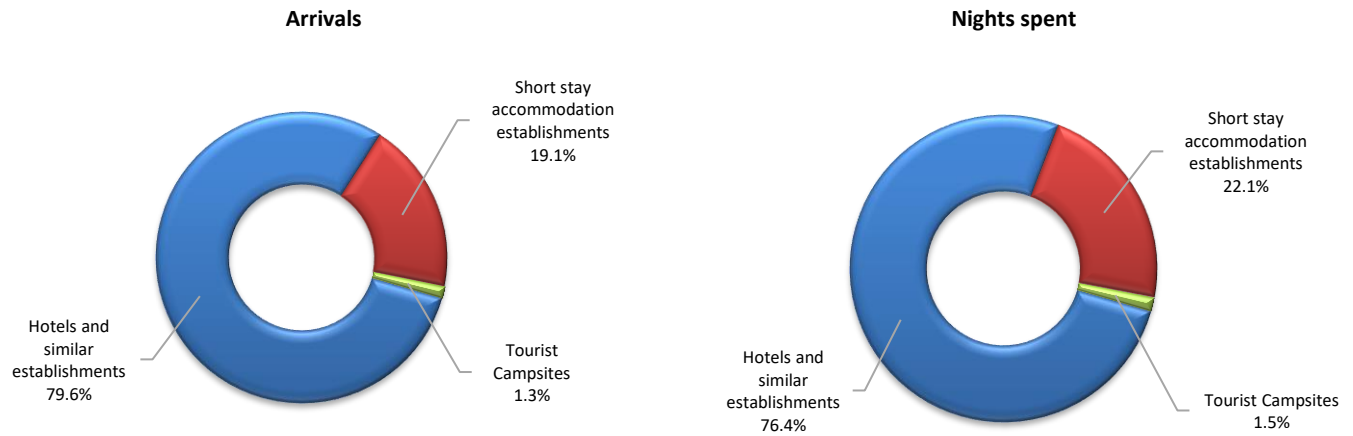
As regards the other European countries an increase of arrivals, in absolute values, is recorded for the United Kingdom (9.8% in arrivals and 10.6% in nights spent) and Turkey (100.5% in arrivals and 104.7% in nights spent).

From the rest of the continents, a significant increase in arrivals, in absolute values, is recorded from America, and, in particular, for the United States of America (32.0% in arrivals and 32.3% in nights spent) (Tables 5 and 6).

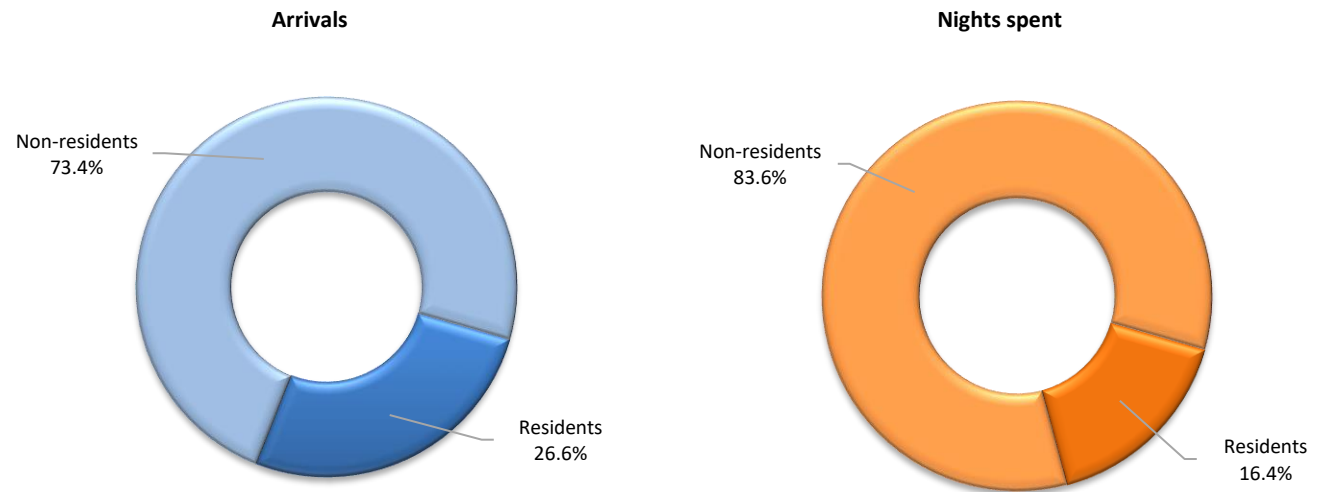
Graph 2. Evolution of total arrivals and nights spent of residents and non-residents in hotels and similar establishments (NACE Rev.2, 55.1) , tourist campsites (NACE Rev.2, 55.3) and short-stay accommodation establishments (NACE Rev.2, 55.2), 2018-2023



Graph 3: Percentage (%) distribution of arrivals and nights spent in hotels and similar establishments (NACE Rev.2, 55.1), tourist campsites (NACE Rev.2, 55.3) and short-stay accommodation establishments (NACE Rev.2, 55.2), 2023



Graph 4. Arrivals and nights spent of residents and non-residents in hotels and similar establishments (NACE Rev.2, 55.1), tourist campsites (NACE Rev.2, 55.3) and short-stay accommodation establishments (NACE Rev.2, 55.2), 2023



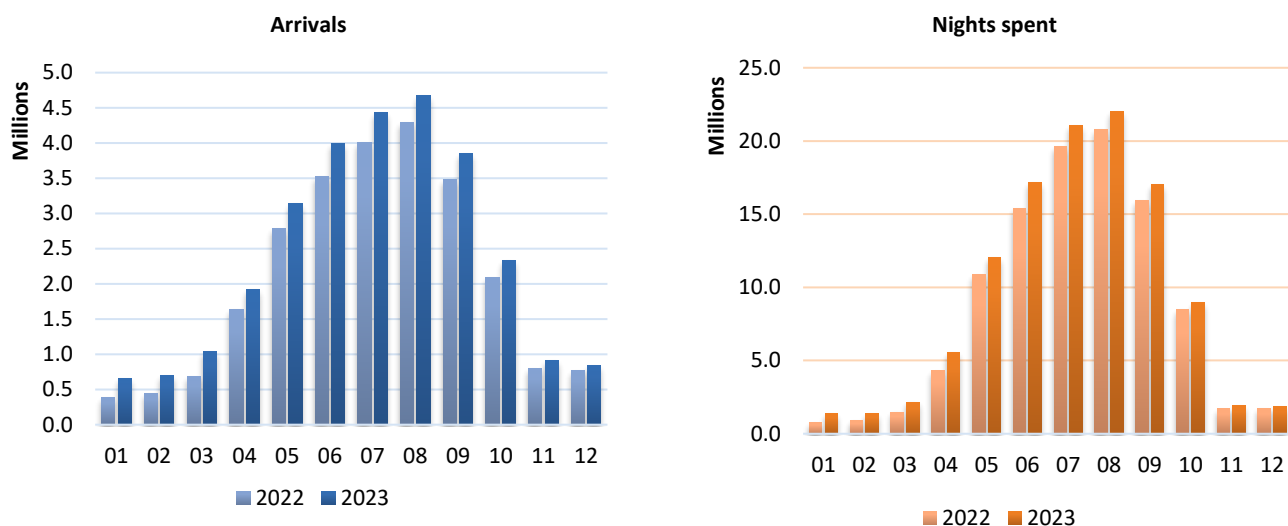
**Table 1. Arrivals of residents and non-residents at hotels, similar establishments, tourist campsites and short-stay accommodation establishments by month, 2022 and 2023**

Month	2022							2023							Change % of total 2023/2022
	Hotels and similar establishments			Tourist Campsites		Short stay accommodation establishments		Hotels and similar establishments			Tourist Campsites		Short stay accommodation establishments		
	Total	Residents	Non residents	Residents	Non residents	Residents	Non residents	Total	Residents	Non residents	Residents	Non residents	Residents	Non residents	
Total	31,413,356	6,663,492	18,229,591	142,528	272,678	1,505,868	4,599,199	35,782,424	7,701,318	20,788,891	154,074	317,417	1,650,461	5,170,263	13.9
January	432,152	293,428	94,120	82	256	34,371	9,895	723,472	441,227	217,856	131	390	50,040	13,828	67.4
February	488,775	322,442	122,033	66	228	33,018	10,988	757,301	449,872	249,472	100	414	43,339	14,104	54.9
March	737,333	412,626	270,124	98	623	40,954	12,908	1,114,884	594,190	443,581	133	742	59,633	16,605	51.2
April	1,818,043	574,076	1,058,622	671	7,309	58,495	118,870	2,156,633	701,349	1,218,787	959	9,626	74,687	151,225	18.6
May	3,193,521	543,811	2,238,438	4,096	26,867	66,600	313,709	3,632,014	603,725	2,536,221	5,400	35,547	70,666	380,455	13.7
June	4,469,678	650,629	2,867,128	17,622	41,763	172,918	719,618	5,132,877	749,218	3,243,038	18,875	47,059	181,040	893,647	14.8
July	5,506,656	788,151	3,220,971	45,979	67,632	309,054	1,074,869	6,104,604	857,661	3,578,609	48,943	75,835	318,145	1,225,411	10.9
August	6,222,628	944,643	3,344,224	65,100	80,079	473,528	1,315,054	6,706,282	1,013,344	3,661,653	69,205	89,353	499,743	1,372,984	7.8
September	4,436,623	629,882	2,856,127	7,932	41,521	156,979	744,182	4,891,345	677,818	3,179,260	9,247	48,190	168,106	808,724	10.2
October	2,409,230	538,194	1,558,306	604	5,463	65,394	241,269	2,664,617	557,386	1,772,122	786	8,733	72,015	253,575	10.6
November	866,741	448,695	349,589	158	598	41,757	25,944	985,494	487,363	419,591	202	891	50,209	27,238	13.7
December	831,976	516,915	249,909	120	339	52,800	11,893	912,901	568,165	268,701	93	637	62,838	12,467	9.7

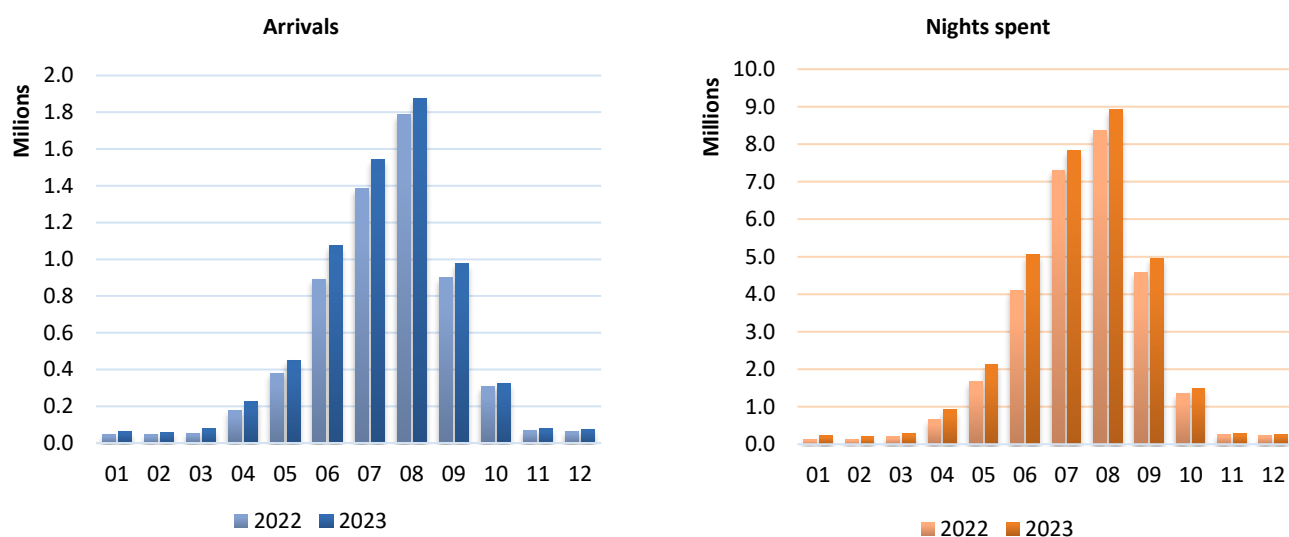
**Table 2. Nights spent of residents and non-residents in hotels, similar establishments, tourist campsites and short-stay accommodation establishments by month, 2021 and 2022**

Month	2022							2023							Change % of total 2023/2022
	Hotels and similar establishments			Tourist Campsites		Short stay accommodation establishments		Hotels and similar establishments			Tourist Campsites		Short stay accommodation establishments		
	Total	Residents	Non residents	Residents	Non residents	Residents	Non residents	Total	Residents	Non residents	Residents	Non residents	Residents	Non residents	
Total	132,745,904	15,253,512	86,647,511	788,966	1,050,838	5,153,336	23,851,741	147,209,821	17,351,433	95,146,196	858,933	1,282,168	5,892,649	26,678,442	10.9
January	890,680	556,825	216,583	452	962	87,021	28,837	1,591,829	853,068	507,293	716	1,568	171,478	57,706	78.7
February	1,012,437	598,893	284,136	417	676	98,704	29,611	1,603,094	835,272	571,967	642	1,079	149,068	45,066	58.3
March	1,684,839	799,360	682,589	441	1,627	165,393	35,429	2,450,684	1,135,668	1,032,657	499	2,272	228,200	51,388	45.5
April	5,002,313	1,103,841	3,220,214	2,595	17,501	186,215	471,947	6,491,390	1,474,462	4,068,107	3,094	23,137	276,599	645,991	29.8
May	12,694,208	1,098,340	9,806,073	24,917	87,464	204,485	1,472,929	14,349,293	1,202,191	10,856,486	38,166	125,983	246,214	1,880,253	13.0
June	19,739,970	1,487,306	13,874,029	101,744	166,617	591,083	3,519,191	22,554,193	1,655,751	15,519,357	108,794	202,315	649,532	4,418,444	14.3
July	27,445,185	2,151,453	17,458,647	242,839	281,617	1,105,287	6,205,342	29,461,403	2,298,588	18,759,432	256,535	324,721	1,166,998	6,655,129	7.3
August	29,824,098	3,005,791	17,772,880	360,372	329,378	1,521,173	6,834,504	31,687,354	3,158,248	18,839,355	376,750	391,566	1,659,473	7,261,962	6.2
September	20,688,693	1,444,384	14,458,259	50,670	146,570	543,764	4,045,046	22,215,646	1,524,027	15,485,147	68,383	178,309	621,939	4,337,841	7.4
October	9,858,886	1,102,521	7,374,691	3,089	14,962	268,258	1,095,365	10,467,410	1,133,218	7,807,581	3,876	24,745	303,677	1,194,313	6.2
November	1,967,281	838,694	868,718	797	2,274	182,898	73,900	2,201,951	914,353	999,309	1,026	3,518	197,787	85,958	11.9
December	1,937,314	1,066,104	630,692	633	1,190	199,055	39,640	2,135,574	1,166,587	699,505	452	2,955	221,684	44,391	10.2

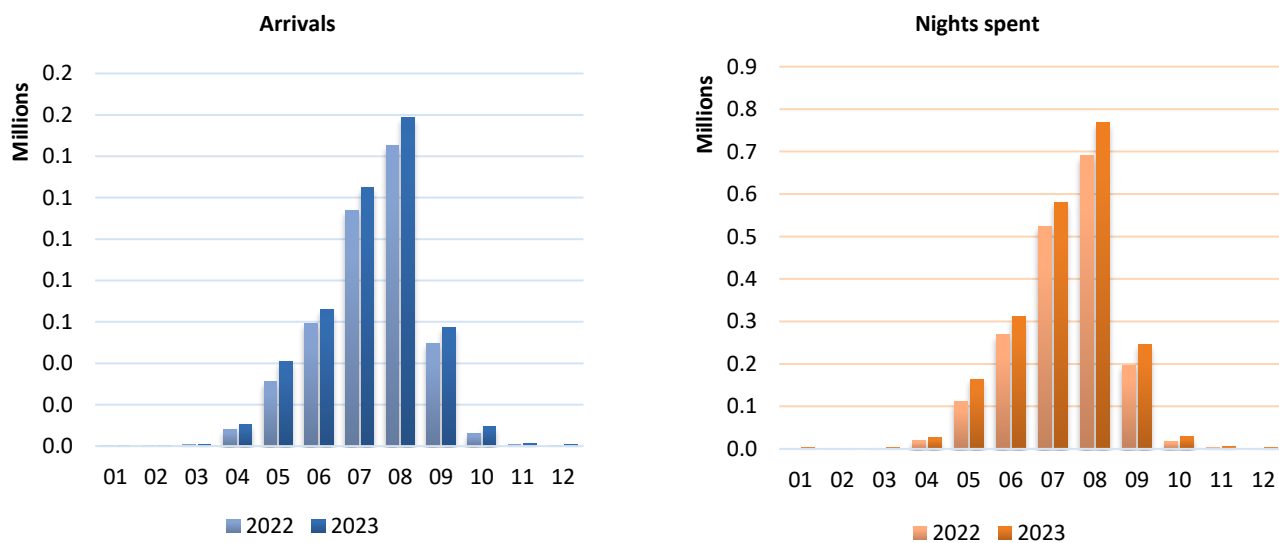
Graph 5. Arrivals and nights spent in hotels and similar establishments (NACE Rev.2, 55.1) by month, 2022-2023



Graph 6. Arrivals and nights spent in short-stay accommodation establishments (NACE Rev.2, 55.2) by month, 2022-2023



Graph 7. Arrivals and nights spent in tourist campsites (NACE Rev.2, 55.3) by month, 2021-2022



**Table 3. Arrivals at hotels and similar establishments (NACE Rev.2, 55.1), tourist campsites (NACE Rev.2, 55.3) and short-stay accommodation establishments (NACE Rev.2, 55.2), by NUTS2 region, 2022 and 2023**

	2022					2023					Change % of total 2023/2022
	Total	Hotels and similar establishments	Tourist Campsites	Short stay accommodation establishments	Percentage (%) of total	Total	Hotels and similar establishments	Tourist Campsites	Short stay accommodation establishments	Percentage (%) of total	
Total	31,413,356	24,893,083	415,206	6,105,067	100.0	35,782,424	28,490,209	471,491	6,820,724	100.0	13.9
Anatoliki Makedonia, Thraki	842,820	630,606	25,818	186,396	2.7	1,019,803	722,700	28,854	268,249	2.9	21.0
Kentriki Makedonia	3,897,420	2,793,746	118,085	985,589	12.4	4,314,913	3,267,053	129,058	918,802	12.1	10.7
Dytiki Makedonia <sup>(1)</sup>	140,786	126,390		14,396	0.4	173,390	152,955	0	20,435	0.5	23.2
Ipeiros	928,133	591,962	13,837	322,334	3.0	983,089	708,392	17,591	257,106	2.7	5.9
Thessalia	1,255,380	940,753	26,784	287,843	4.0	1,394,409	1,035,417	28,016	330,976	3.9	11.1
Stereia Ellada	898,926	735,320	17,270	146,336	2.9	1,041,793	870,764	22,214	148,815	2.9	15.9
Ionia Nisia	2,785,360	2,129,309	22,897	633,154	8.9	3,332,407	2,544,914	25,846	761,647	9.3	19.6
Dytiki Ellada	755,439	668,379	26,563	60,497	2.4	945,174	844,258	30,923	69,993	2.6	25.1
Peloponnisos	1,675,784	1,252,734	83,032	340,018	5.3	2,054,571	1,471,444	93,890	489,237	5.7	22.6
Attiki	4,656,519	4,379,766	8,559	268,194	14.8	5,575,052	5,179,098	11,372	384,582	15.6	19.7
Voreio Aigaio <sup>(2)</sup>	492,633	353,857		138,776	1.6	574,098	417,638		156,460	1.6	16.5
Notio Aigaio <sup>(2)</sup>	7,179,019	5,422,141	58,725	1,698,153	22.9	8,046,359	5,902,174	67,062	2,077,123	22.5	12.1
Kriti	5,905,137	4,868,120	13,636	1,023,381	18.8	6,327,366	5,373,402	16,665	937,299	17.7	7.2

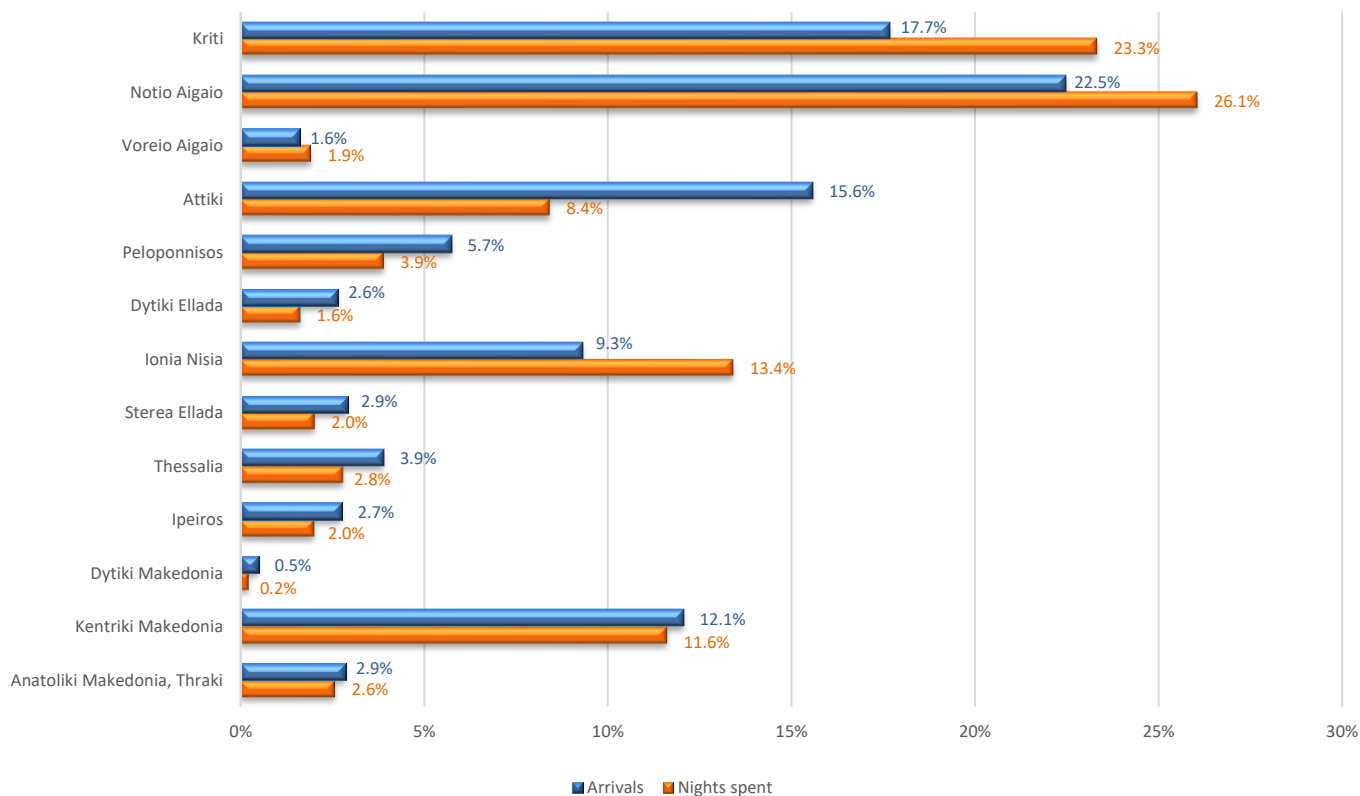
**Table 4. Nights spent at hotels and similar establishments (NACE Rev.2, 55.1), tourist campsites (NACE Rev.2, 55.3) and short-stay accommodation establishments (NACE Rev.2, 55.2), by NUTS2 region, 2022 and 2023**

	2022					2023					Change % of total 2023/2022
	Total	Hotels and similar establishments	Tourist Campsites	Short stay accommodation establishments	Percentage (%) of total	Total	Hotels and similar establishments	Tourist Campsites	Short stay accommodation establishments	Percentage (%) of total	
Total	132,745,904	101,901,023	1,839,804	29,005,077	100.0	147,209,821	112,497,629	2,141,101	32,571,091	100.0	10.9
Anatoliki Makedonia, Thraki	3,124,783	2,036,923	114,427	973,433	2.4	3,809,794	2,315,351	164,819	1,329,624	2.6	21.9
Kentriki Makedonia	15,889,734	9,835,772	772,666	5,281,296	12.0	17,101,498	11,043,573	878,272	5,179,653	11.6	7.6
Dytiki Makedonia <sup>(1)</sup>	279,826	248,818		31,008	0.2	345,477	297,067	0	48,410	0.2	23.5
Ipeiros	3,021,521	1,462,910	58,495	1,500,116	2.3	2,967,032	1,741,599	90,577	1,134,856	2.0	-1.8
Thessalia	3,666,673	2,414,483	93,057	1,159,133	2.8	4,124,456	2,656,381	87,664	1,380,411	2.8	12.5
Stereia Ellada	2,529,258	1,919,741	55,778	553,739	1.9	2,981,803	2,228,056	69,833	683,914	2.0	17.9
Ionia Nisia	16,512,634	12,058,229	112,172	4,342,233	12.4	19,762,799	13,809,340	123,419	5,830,040	13.4	19.7
Dytiki Ellada	2,001,940	1,741,135	71,602	189,203	1.5	2,406,592	2,117,641	85,306	203,645	1.6	20.2
Peloponnisos	4,675,172	3,441,825	306,870	926,477	3.5	5,757,102	3,959,584	340,348	1,457,170	3.9	23.1
Attiki	10,313,319	9,657,945	19,191	636,183	7.8	12,409,598	11,327,339	28,641	1,053,618	8.4	20.3
Voreio Aigaio <sup>(2)</sup>	2,544,399	1,777,231		767,168	1.9	2,838,330	2,017,839		820,491	1.9	11.6
Notio Aigaio <sup>(2)</sup>	36,161,498	28,478,737	194,334	7,488,427	27.2	38,362,449	29,954,292	224,060	8,184,097	26.1	6.1
Kriti	32,025,147	26,827,274	41,212	5,156,661	24.1	34,342,891	29,029,567	48,162	5,265,162	23.3	7.2

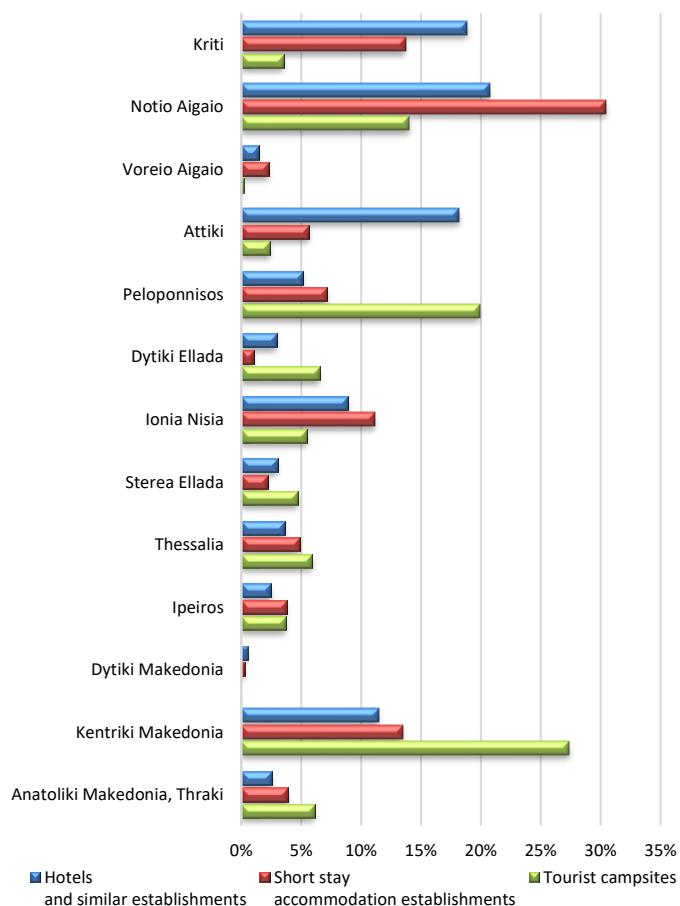
<sup>(1)</sup> The arrivals and nights spent refer to hotels, similar establishments and tourist campsites, which are registered to the Hellenic Chamber of Hotels. For the Region of Dytiki Makedonia there are not tourist campsites registered to the Hellenic Chamber of Hotels.

<sup>(2)</sup> For reasons of statistical confidentiality regarding the protection of the identity of the surveyed units, data on tourist campsites in the Region of Voreio Aigaio have been included in the relevant data for the Region of Notio Aigaio.

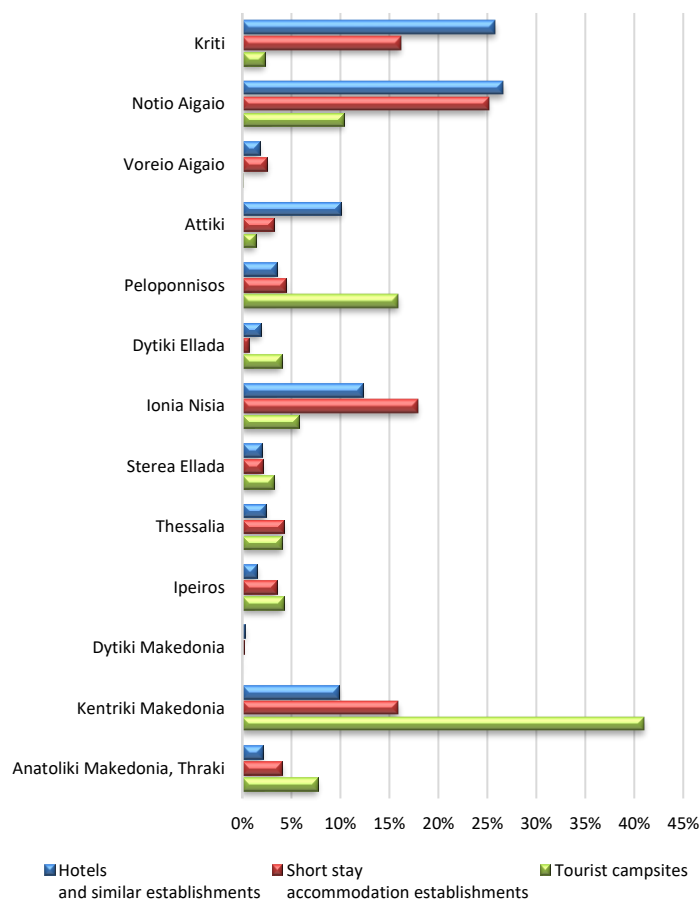
**Graph 8. Percentage distribution of arrivals and nights spent at hotels, similar establishments (NACE Rev.2, 55.1), tourist campsites (NACE Rev.2, 55.3) and short stay accommodation establishments (NACE Rev.2, 55.2), by NUTS 2 Region, 2023**



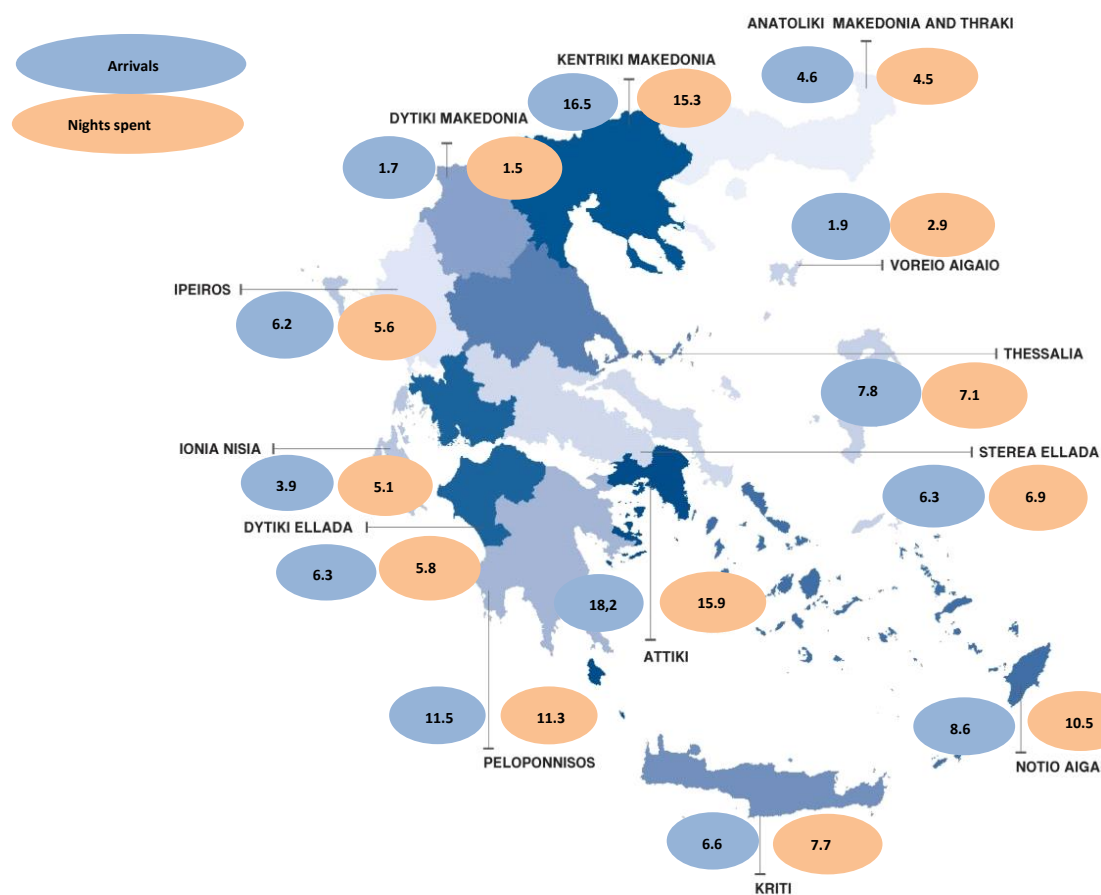
**Graph 9. Percentage (%) distribution of arrivals by type of establishment, NUTS 2 region, 2023**



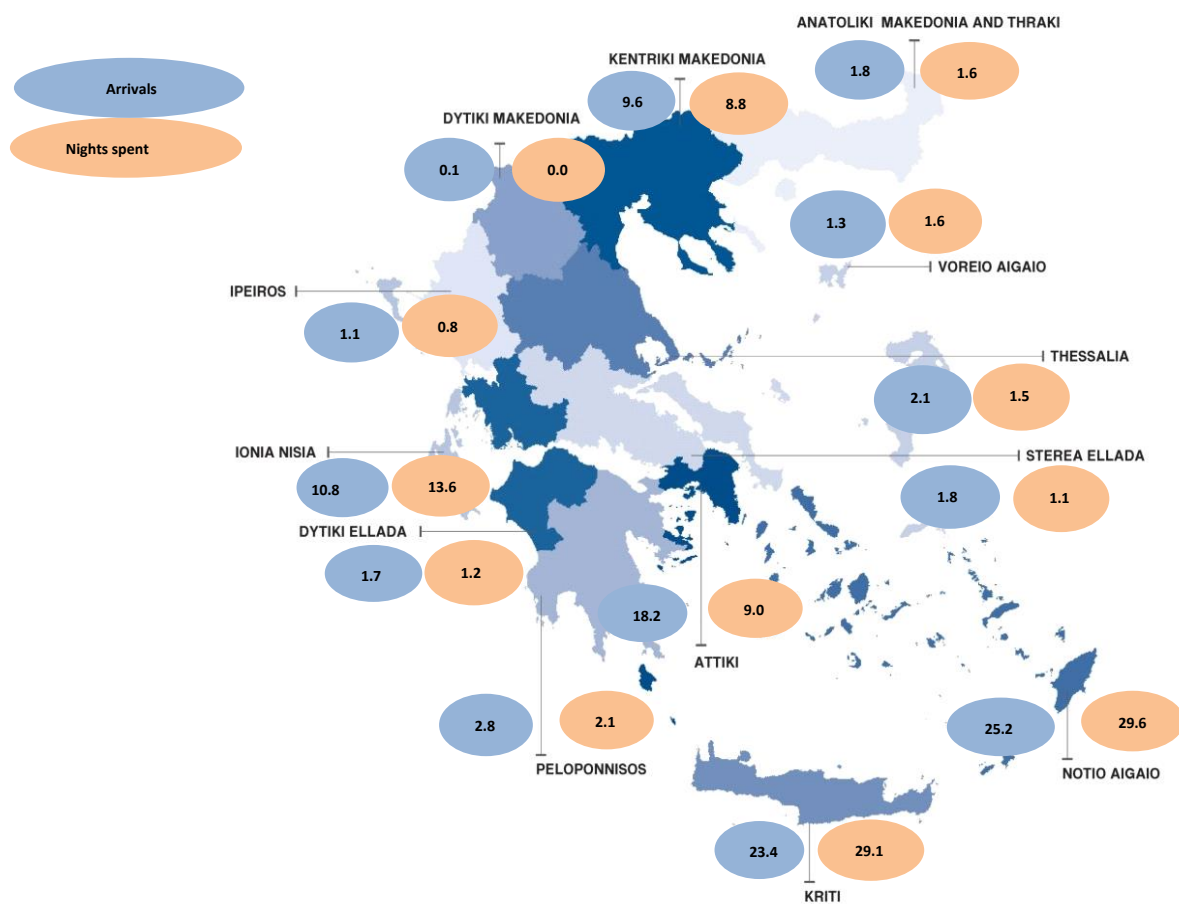
**Graph 10. Percentage (%) distribution of nights spent by type of establishment, NUTS 2 region, 2023**



Graph 11. Percentage (%) of arrivals and nights spent of residents in hotels (NACE Rev.2, 55.1), NUTS 2 region, 2023

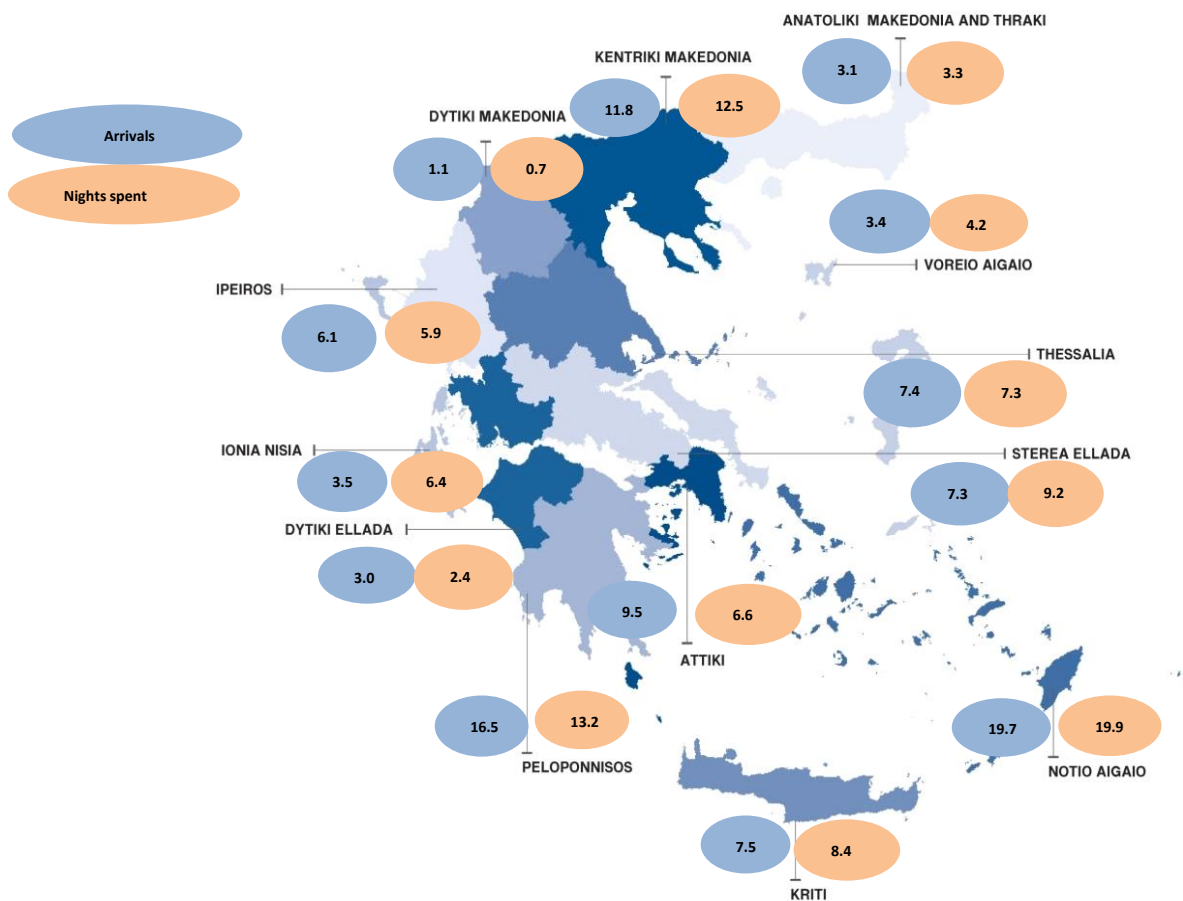


Graph 12. Percentage (%) of arrivals and nights spent of non residents in hotels (NACE Rev.2, 55.1), NUTS 2 region, 2023

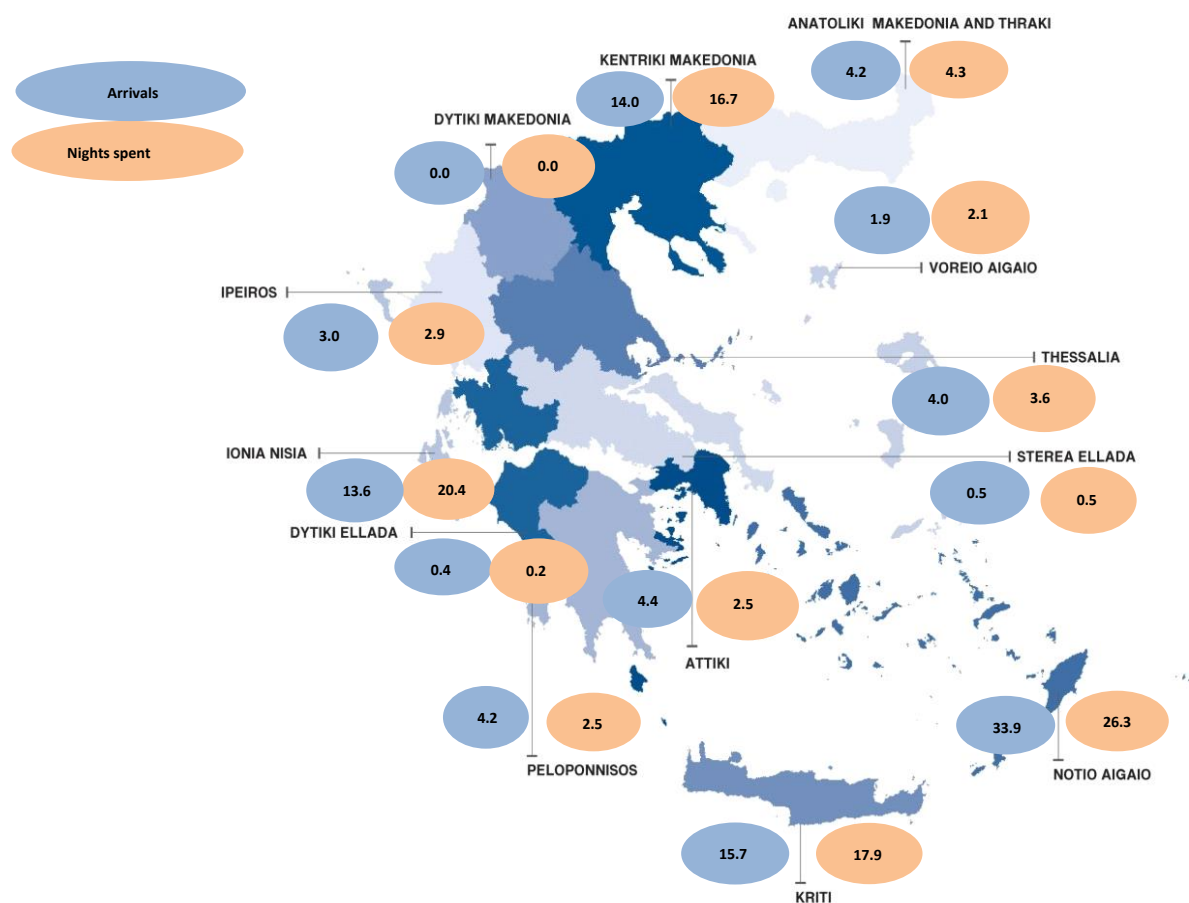




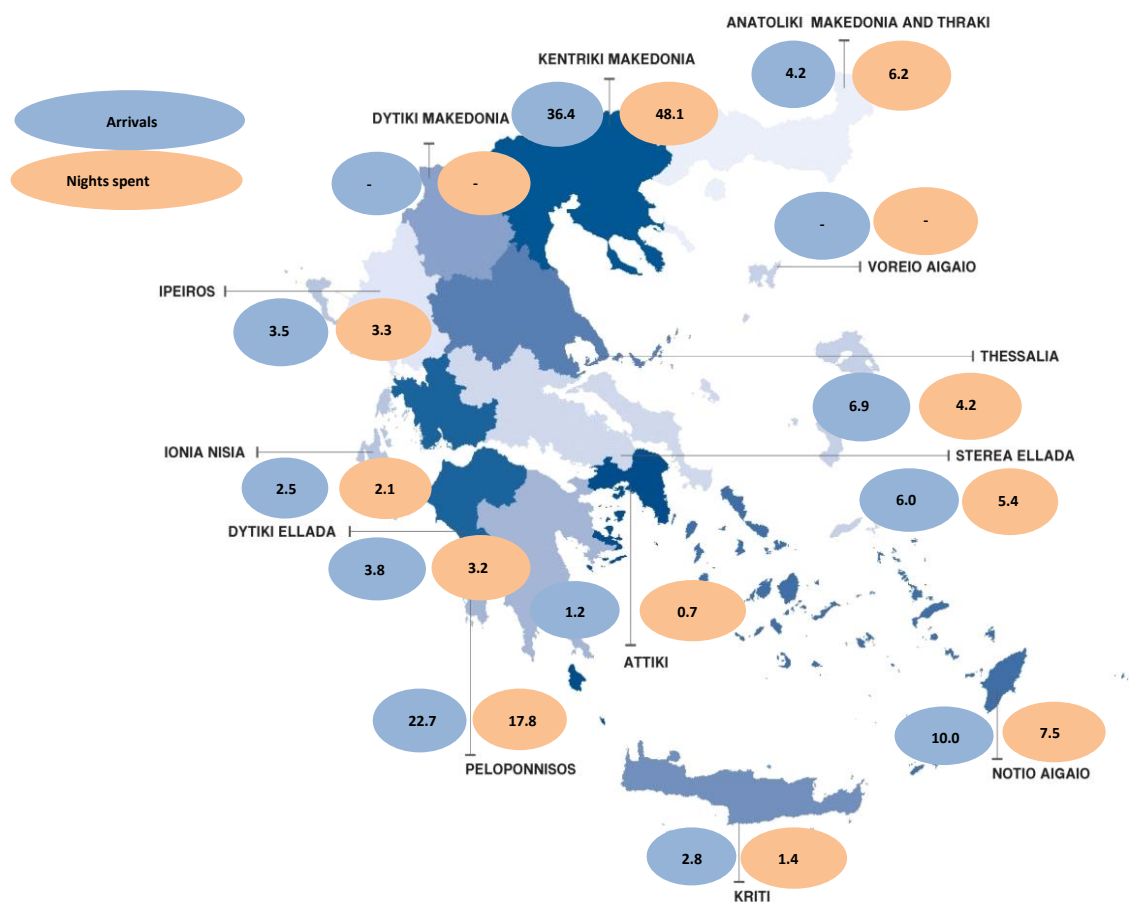
**Graph 13. Percentage (%) of arrivals and nights spent of residents in short stay accomodation establishments (NACE Rev.2, 55.2), NUTS 2 region, 2023**



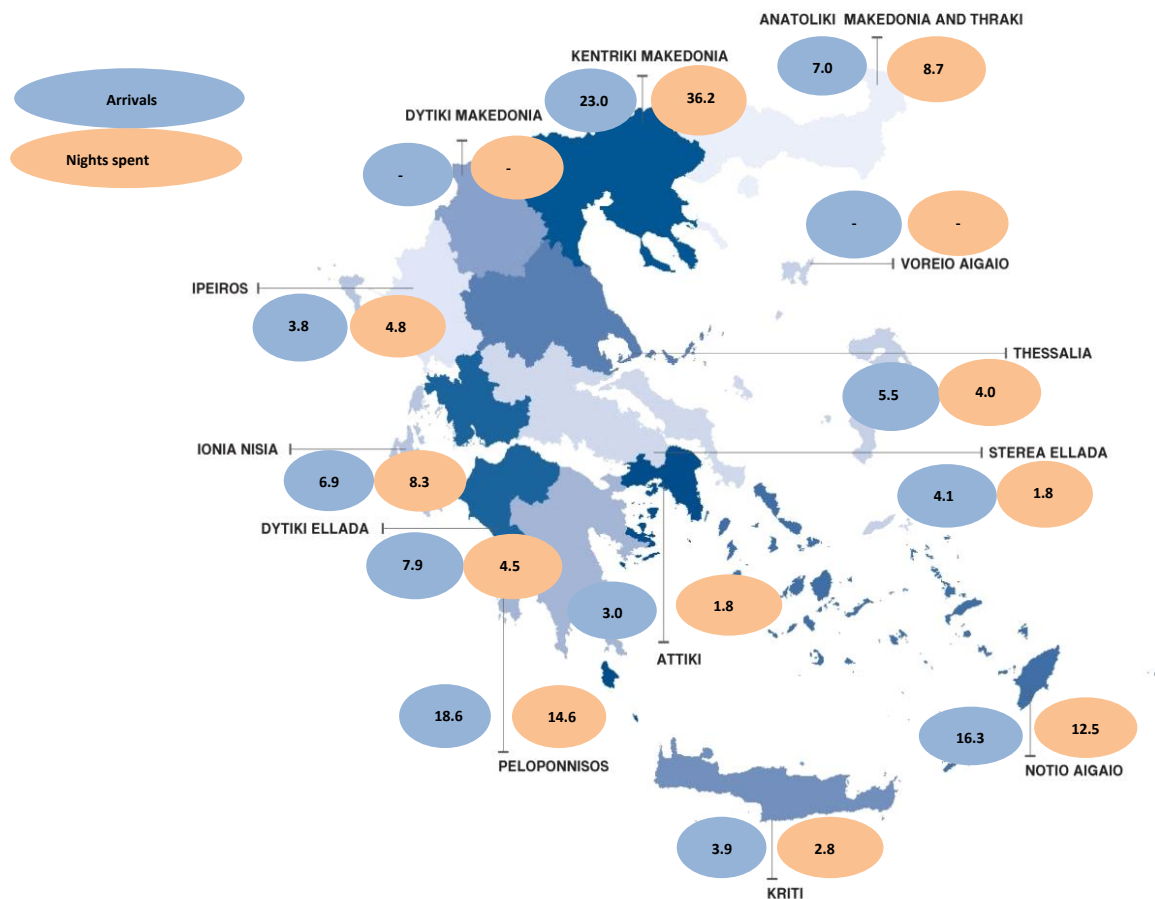
**Graph 14. Percentage (%) of arrivals and nights spent of non residents in short stay accomodation establishments (NACE Rev.2, 55.2), NUTS 2 region, 2023**



Graph 15. Percentage (%) of arrivals and nights spent of residents in tourist campsites (NACE Rev.2, 55.3), NUTS 2 region, 2023<sup>(1)</sup>



Graph 16. Percentage (%) of arrivals and nights spent of non residents in tourist campsites (NACE Rev.2, 55.3), NUTS 2 region, 2023 <sup>(1)</sup>



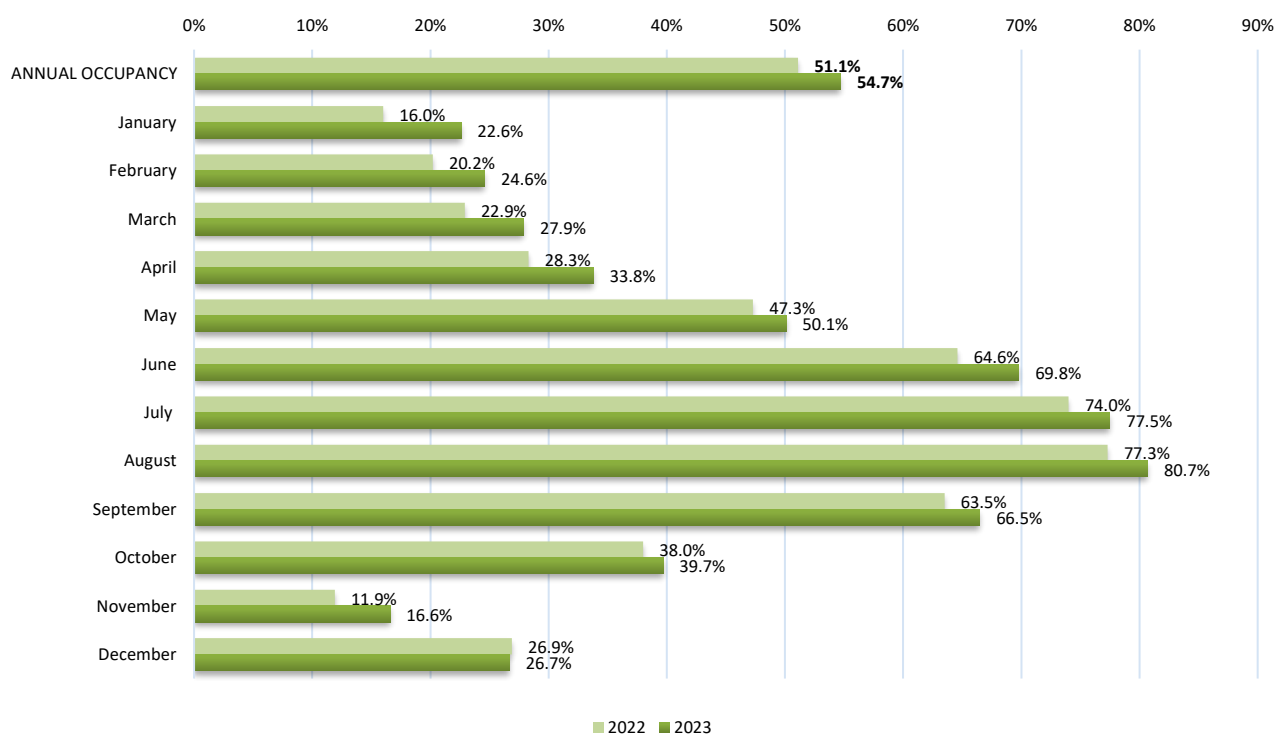
<sup>(1)</sup> For reasons of statistical confidentiality regarding the protection of the identity of the surveyed units, data on tourist campsites in the Region of Voreio Aigaio have been included in the relevant data for the Region of Notio Aigaio.

**Table 5: Capacity by hotel category, 2023**

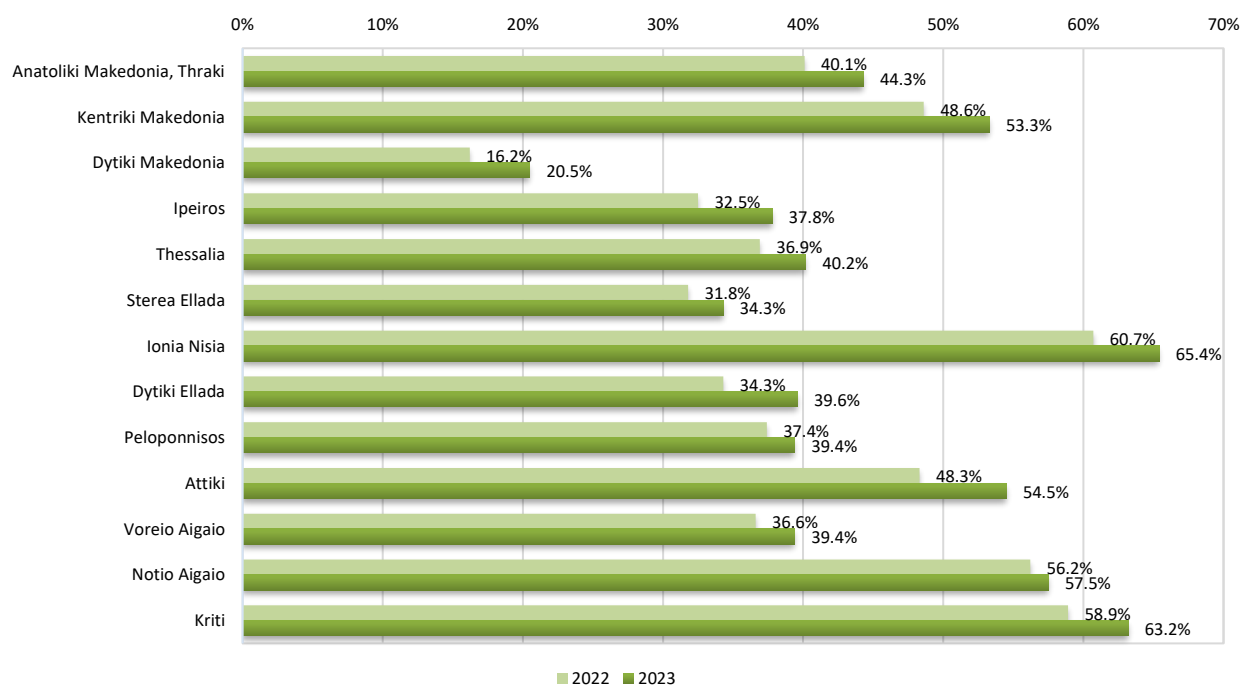
	Establishments	Rooms	Bed places
<b>Total</b>	<b>10,047</b>	<b>444,389</b>	<b>887,748</b>
<b>5*****</b>	792	105,596	221,378
<b>4****</b>	1,846	128,813	258,701
<b>3***</b>	2,919	101,592	199,612
<b>2**</b>	3,313	85,979	163,329
<b>1*</b>	1,177	22,409	44,728

Source: Hellenic Chamber of Hotels.

**Graph 17. Occupancy rate of bed places in hotels and similar type accommodation establishments, by month, 2022 and 2023**



**Graph 18. Occupancy rate of bed places in hotels and similar type accommodation establishments, by NUTS 2 region, 2022 and 2023**



**Note:** occupancy rates are calculated only for hotels and similar establishments (NACE Rev.2 55.1)

**Table 6. Arrivals of non-residents at hotels, similar establishments and tourist campsites, by country of residence, 2022 and 2023**

	2022					2023					Change % of total 2023/2022
	Total	Hotels and similar establishments	Tourist campsites	Short stay accommodation establishments	Percentage % of total	Total	Hotels and similar establishments	Tourist campsites	Short stay accommodation establishments	Percentage % of total	
<b>Total</b>	<b>23,101,469</b>	<b>18,229,591</b>	<b>272,678</b>	<b>4,599,199</b>	<b>100.0</b>	<b>26,276,571</b>	<b>20,788,891</b>	<b>317,417</b>	<b>5,170,263</b>	<b>100.0</b>	<b>13.7</b>
<b>Europe</b>	<b>19,376,893</b>	<b>14,975,837</b>	<b>250,951</b>	<b>4,150,105</b>	<b>83.9</b>	<b>20,901,167</b>	<b>16,404,162</b>	<b>283,375</b>	<b>4,213,630</b>	<b>79.5</b>	<b>7.9</b>
<b>European Union</b>	<b>13,566,303</b>	<b>10,576,231</b>	<b>215,598</b>	<b>2,774,474</b>	<b>58.7</b>	<b>14,384,342</b>	<b>11,333,242</b>	<b>244,020</b>	<b>2,807,080</b>	<b>54.7</b>	<b>6.0</b>
Austria	407,535	319,379	11,197	76,959	1.8	436,467	342,959	13,415	80,093	1.7	7.1
Belgium	439,382	369,695	4,010	65,677	1.9	434,049	377,070	4,090	52,889	1.7	-1.2
Bulgaria	506,778	267,524	35,235	204,019	2.2	535,252	324,988	37,735	172,529	2.0	5.6
France	1,800,125	1,363,108	27,121	409,896	7.8	1,896,705	1,394,621	29,280	472,804	7.2	5.4
Germany	3,450,040	2,888,591	60,983	500,466	14.9	3,459,026	2,862,426	69,505	527,095	13.2	0.3
Denmark	475,666	405,381	978	69,307	2.1	433,605	375,636	947	57,022	1.7	-8.8
Estonia	39,237	34,227	151	4,859	0.2	37,975	34,240	302	3,433	0.1	-3.2
Ireland	161,708	128,602	2,423	30,683	0.7	190,012	153,153	1,703	35,156	0.7	17.5
Spain	375,618	284,535	4,377	86,706	1.6	431,631	332,854	5,056	93,721	1.6	14.9
Italy	1,095,042	676,752	22,035	396,255	4.7	1,297,710	812,635	24,307	460,768	4.9	18.5
Croatia	31,114	25,864	272	4,978	0.1	40,600	34,921	188	5,491	0.2	30.5
Cyprus	230,783	199,425	453	30,905	1.0	285,681	246,780	634	38,267	1.1	23.8
Latvia	36,782	32,319	83	4,380	0.2	37,847	34,517	133	3,197	0.1	2.9
Lithuania	90,451	80,777	368	9,306	0.4	89,655	81,230	211	8,214	0.3	-0.9
Luxembourg	33,034	28,801	136	4,097	0.1	32,524	28,391	103	4,030	0.1	-1.5
Malta	16,928	10,817	64	6,047	0.1	19,496	14,919	98	4,479	0.1	15.2
Netherlands	1,034,071	798,125	14,146	221,800	4.5	1,006,055	810,778	18,063	177,214	3.8	-2.7
Hungary	181,004	119,035	3,210	58,759	0.8	186,140	126,521	3,088	56,531	0.7	2.8
Poland	831,138	735,237	8,194	87,707	3.6	1,006,816	916,532	9,435	80,849	3.8	21.1
Portugal	75,524	60,572	488	14,464	0.3	90,439	73,694	634	16,111	0.3	19.7
Romania	870,208	566,883	9,529	293,796	3.8	919,214	638,334	11,660	269,220	3.5	5.6
Slovakia	99,501	87,119	944	11,438	0.4	131,136	115,055	1,285	14,796	0.5	31.8
Slovenia	60,116	44,606	4,123	11,387	0.3	64,616	49,141	6,026	9,449	0.2	7.5
Sweden	607,436	519,040	874	87,522	2.6	614,299	528,076	775	85,448	2.3	1.1
Czechia	345,823	292,180	3,946	49,697	1.5	428,547	372,282	5,145	51,120	1.6	23.9
Finland	271,259	237,637	258	33,364	1.2	278,845	251,489	202	27,154	1.1	2.8
<b>Total of other European countries</b>	<b>5,810,590</b>	<b>4,399,606</b>	<b>35,353</b>	<b>1,375,631</b>	<b>25.2</b>	<b>6,516,825</b>	<b>5,070,920</b>	<b>39,355</b>	<b>1,406,550</b>	<b>24.8</b>	<b>12.2</b>
Iceland	12,262	11,812	32	418	0.1	14,458	12,211	8	2,239	0.1	17.9
Norway	343,003	293,180	337	49,486	1.5	370,329	315,963	365	54,001	1.4	8.0
Switzerland (incl. Liechtenstein)	419,860	350,265	9,490	60,105	1.8	429,234	350,101	11,497	67,636	1.6	2.2
United Kingdom	3,701,254	3,019,320	9,240	672,694	16.0	4,062,317	3,360,007	8,878	693,432	15.5	9.8
Russia	105,099	87,617	373	17,109	0.5	97,367	80,482	423	16,462	0.4	-7.4
Serbia	469,869	65,914	1,172	402,783	2.0	426,063	76,368	1,277	348,418	1.6	-9.3
Turkey	226,151	190,009	1,593	34,549	1.0	453,448	372,694	3,994	76,760	1.7	100.5
Other European countries	531,779	381,489	13,116	138,487	2.3	663,609	503,094	12,913	147,602	2.5	24.5

	Total	Hotels and similar establishments	2022 Tourist campsites	Short stay accommodation establishments	Percentage % of total	Total	Hotels and similar establishments	2023 Tourist campsites	Short stay accommodation establishments	Percentage % of total	Change % of total 2023/2022
<b>Africa</b>	<b>95,967</b>	<b>81,539</b>	<b>697</b>	<b>13,731</b>	<b>0.4</b>	<b>118,481</b>	<b>96,270</b>	<b>657</b>	<b>21,554</b>	<b>0.5</b>	<b>23.5</b>
<b>America</b>	<b>2,326,176</b>	<b>2,003,860</b>	<b>11,344</b>	<b>310,972</b>	<b>10.1</b>	<b>3,113,076</b>	<b>2,540,033</b>	<b>16,275</b>	<b>556,768</b>	<b>11.8</b>	<b>33.8</b>
North America	2,091,396	1,795,091	8,558	287,747	9.1	2,779,407	2,274,435	14,093	490,879	10.6	32.9
USA	1,814,267	1,575,389	5,825	233,053	7.9	2,393,959	1,985,508	11,937	396,514	9.1	32.0
Canada	277,129	219,702	2,733	54,694	1.2	385,448	288,927	2,156	94,365	1.5	39.1
South and Central America	234,780	208,769	2,786	23,225	1.0	333,669	265,598	2,182	65,889	1.3	42.1
<b>Asia</b>	<b>1,058,327</b>	<b>946,339</b>	<b>1,847</b>	<b>110,141</b>	<b>4.6</b>	<b>1,479,518</b>	<b>1,301,767</b>	<b>2,723</b>	<b>175,028</b>	<b>5.6</b>	<b>39.8</b>
Japan	22,552	17,465	120	4,967	0.1	61,867	50,648	134	11,085	0.2	174.3
People's republic of China	56,323	47,896	191	8,236	0.2	165,987	143,592	357	22,038	0.6	194.7
Other Asian countries	979,452	880,978	1,536	96,938	4.2	1,251,664	1,107,527	2,232	141,905	4.8	27.8
<b>Oceania</b>	<b>221,202</b>	<b>206,694</b>	<b>7,839</b>	<b>6,669</b>	<b>1.0</b>	<b>642,266</b>	<b>433,580</b>	<b>14,387</b>	<b>194,299</b>	<b>2.4</b>	<b>190.4</b>
Australia	200,589	188,482	6,812	5,295	0.9	589,127	398,859	12,121	178,147	2.2	193.7
New Zealand and other Oceanian territories	20,613	18,212	1,027	1,374	0.1	53,139	34,721	2,266	16,152	0.2	157.8
<b>Not specified</b>	<b>22,904</b>	<b>15,323</b>	<b>0</b>	<b>7,581</b>	<b>0.1</b>	<b>22,063</b>	<b>13,079</b>	<b>0</b>	<b>8,984</b>	<b>0.1</b>	<b>-3.7</b>

**Table 7. Nights spent by non-residents in hotels, similar establishments and tourist campsites, by country of residence, 2022 and 2023**

	Total	Hotels and similar establishments	2022 Tourist campsites	Short stay accommodation establishments	Percentage % of total	Total	Hotels and similar establishments	2023 Tourist campsites	Short stay accommodation establishments	Percentage % of total	Change % of total 2023/2022
<b>Total</b>	<b>111,550,090</b>	<b>86,647,511</b>	<b>1,050,838</b>	<b>23,851,741</b>	<b>100.0</b>	<b>123,106,806</b>	<b>95,146,196</b>	<b>1,282,168</b>	<b>26,678,442</b>	<b>100.0</b>	<b>10.4</b>
<b>Europe</b>	<b>101,533,313</b>	<b>78,242,287</b>	<b>992,755</b>	<b>22,298,271</b>	<b>91.0</b>	<b>108,830,668</b>	<b>83,960,255</b>	<b>1,183,038</b>	<b>23,687,375</b>	<b>88.4</b>	<b>7.2</b>
<b>European Union</b>	<b>70,153,848</b>	<b>55,320,245</b>	<b>821,180</b>	<b>14,012,423</b>	<b>62.9</b>	<b>73,810,196</b>	<b>58,249,622</b>	<b>1,002,964</b>	<b>14,557,610</b>	<b>60.0</b>	<b>5.2</b>
Austria	2,226,217	1,748,482	41,864	435,871	2.0	2,338,655	1,826,404	50,191	462,060	1.9	5.1
Belgium	2,144,787	1,846,154	11,270	287,363	1.9	2,121,711	1,875,047	13,105	233,559	1.7	-1.1
Bulgaria	2,151,268	994,166	207,351	949,751	1.9	2,294,666	1,222,596	257,858	814,212	1.9	6.7
France	7,462,366	5,678,153	76,825	1,707,388	6.7	7,753,777	5,676,739	87,197	1,989,841	6.3	3.9
Germany	20,840,201	17,808,100	209,098	2,823,003	18.7	20,811,988	17,357,675	250,831	3,203,482	16.9	-0.1
Denmark	2,839,332	2,468,222	3,613	367,497	2.5	2,667,446	2,308,384	3,271	355,791	2.2	-6.1
Estonia	194,936	172,641	287	22,008	0.2	188,761	172,384	618	15,759	0.2	-3.2
Ireland	734,719	567,498	8,939	158,282	0.7	844,052	685,544	6,164	152,344	0.7	14.9
Spain	1,005,863	710,923	11,275	283,665	0.9	1,084,254	798,859	13,419	271,976	0.9	7.8
Italy	4,664,577	2,719,296	76,215	1,869,066	4.2	5,415,947	3,183,904	83,761	2,148,282	4.4	16.1
Croatia	106,081	82,036	823	23,222	0.1	137,541	111,294	571	25,676	0.1	29.7
Cyprus	680,265	542,769	1,452	136,044	0.6	813,866	690,079	1,715	122,072	0.7	19.6
Latvia	167,119	147,882	246	18,991	0.1	181,296	166,449	255	14,592	0.1	8.5
Lithuania	465,534	423,370	1,008	41,156	0.4	476,743	429,815	469	46,459	0.4	2.4
Luxembourg	153,102	136,533	415	16,154	0.1	149,470	132,950	233	16,287	0.1	-2.4
Malta	60,183	34,574	238	25,371	0.1	66,588	49,042	339	17,207	0.1	10.6
Netherlands	6,140,430	4,761,676	45,103	1,333,651	5.5	6,105,341	4,900,279	64,113	1,140,949	5.0	-0.6
Hungary	1,005,332	653,685	15,645	336,002	0.9	1,012,198	669,424	15,853	326,921	0.8	0.7
Poland	4,645,501	4,182,338	30,492	432,671	4.2	5,334,676	4,873,602	40,407	420,667	4.3	14.8
Portugal	272,401	214,761	1,298	56,342	0.2	302,931	246,437	1,770	54,724	0.2	11.2
Romania	4,158,694	2,502,296	44,102	1,612,296	3.7	4,611,016	3,019,613	60,619	1,530,784	3.7	10.9
Slovakia	608,448	537,121	4,617	66,710	0.5	743,346	647,392	6,095	89,859	0.6	22.2
Slovenia	298,556	211,257	12,674	74,625	0.3	307,030	235,648	20,305	51,077	0.2	2.8
Sweden	3,322,780	2,875,745	3,145	443,890	3.0	3,761,167	3,198,670	2,363	560,134	3.1	13.2
Czechia	2,197,661	1,855,030	12,328	330,303	2.0	2,570,539	2,221,857	20,655	328,027	2.1	17.0
Finland	1,607,495	1,445,537	857	161,101	1.4	1,715,191	1,549,535	787	164,869	1.4	6.7
<b>Total of other European countries</b>	<b>31,379,465</b>	<b>22,922,042</b>	<b>171,575</b>	<b>8,285,848</b>	<b>28.1</b>	<b>35,020,472</b>	<b>25,710,633</b>	<b>180,074</b>	<b>9,129,765</b>	<b>28.4</b>	<b>11.6</b>
Iceland	62,416	60,330	83	2,003	0.1	71,513	61,586	14	9,913	0.1	14.6
Norway	2,173,572	1,897,161	1,091	275,320	1.9	2,439,220	2,091,375	1,020	346,825	2.0	12.2
Switzerland (incl. Liechtenstein)	1,947,042	1,627,871	26,854	292,317	1.7	1,985,523	1,603,584	34,103	347,836	1.6	2.0
United Kingdom	20,925,026	16,773,586	33,738	4,117,702	18.8	23,147,580	18,456,849	32,249	4,658,482	18.8	10.6
Russia	459,543	364,949	1,363	93,231	0.4	417,102	322,432	1,635	93,035	0.3	-9.2
Serbia	3,092,168	414,731	9,533	2,667,904	2.8	3,111,081	493,500	10,095	2,607,486	2.5	0.6
Turkey	498,762	397,007	3,859	97,896	0.4	1,020,858	776,485	9,781	234,592	0.8	104.7
Other European countries	2,220,936	1,386,407	95,054	739,475	2.0	2,827,595	1,904,822	91,177	831,596	2.3	27.3

	Total	Hotels and similar establishments	2022 Tourist campsites	Short stay accomodation establishments	Percentage % of total	Total	Hotels and similar establishments	2023 Tourist campsites	Short stay accomodation establishments	Percentage % of total	Change % of total 2023/2022
<b>Africa</b>	<b>308,860</b>	<b>259,411</b>	<b>2,148</b>	<b>47,301</b>	<b>0.3</b>	<b>371,283</b>	<b>301,752</b>	<b>2,268</b>	<b>67,263</b>	<b>0.3</b>	<b>20.2</b>
<b>America</b>	<b>5,950,847</b>	<b>4,827,223</b>	<b>30,676</b>	<b>1,092,948</b>	<b>5.3</b>	<b>7,913,432</b>	<b>6,143,060</b>	<b>42,250</b>	<b>1,728,122</b>	<b>6.4</b>	<b>33.0</b>
North America	5,328,143	4,281,401	22,739	1,024,003	4.8	7,042,987	5,460,833	35,823	1,546,331	5.7	32.2
USA	4,549,649	3,717,141	15,305	817,203	4.1	6,020,211	4,739,109	29,364	1,251,738	4.9	32.3
Canada	778,494	564,260	7,434	206,800	0.7	1,022,776	721,724	6,459	294,593	0.8	31.4
South and Central America	622,704	545,822	7,937	68,945	0.6	870,445	682,227	6,427	181,791	0.7	39.8
<b>Asia</b>	<b>3,105,569</b>	<b>2,722,277</b>	<b>4,693</b>	<b>378,599</b>	<b>2.8</b>	<b>4,058,810</b>	<b>3,524,680</b>	<b>9,103</b>	<b>525,027</b>	<b>3.3</b>	<b>30.7</b>
Japan	62,499	44,938	301	17,260	0.1	122,272	97,082	305	24,885	0.1	95.6
People's republic of China	134,573	108,292	445	25,836	0.1	359,002	303,839	586	54,577	0.3	166.8
Other Asian countries	2,908,497	2,569,047	3,947	335,503	2.6	3,577,536	3,123,759	8,212	445,565	2.9	23.0
<b>Oceania</b>	<b>589,357</b>	<b>547,619</b>	<b>20,566</b>	<b>21,172</b>	<b>0.5</b>	<b>1,875,538</b>	<b>1,190,545</b>	<b>45,509</b>	<b>639,484</b>	<b>1.5</b>	<b>218.2</b>
Australia	534,162	499,319	17,877	16,966	0.5	1,721,904	1,097,024	38,958	585,922	1.4	222.4
New Zealand and other Oceanian territories	55,195	48,300	2,689	4,206	0.0	153,634	93,521	6,551	53,562	0.1	178.3
<b>Not specified</b>	<b>62,144</b>	<b>48,694</b>	<b>0</b>	<b>13,450</b>	<b>0.1</b>	<b>57,075</b>	<b>25,904</b>	<b>0</b>	<b>31,171</b>	<b>0.0</b>	<b>-8.2</b>

## EXPLANATORY NOTES

### Arrivals and nights spent at hotels, similar establishments, tourist campsites and short stay accommodation establishments

Data on arrivals and nights spent at hotels, similar establishments and tourist campsites (NACE Rev. 2, 55.1 & 55.3) are collected from a monthly census survey. Each establishment fills in a questionnaire, for every month that it is in operation. It is mandatory for all hotels, similar establishments and tourist campsites to participate in the survey.

Data on the arrivals and nights spent in short-stay accommodation establishments (NACE Rev.2, 55.2), until reference year 2019, were collected through a sample survey. Since reference year 2020 data are collected from the total of short-stay accommodation establishments in operation, for each month of operation.

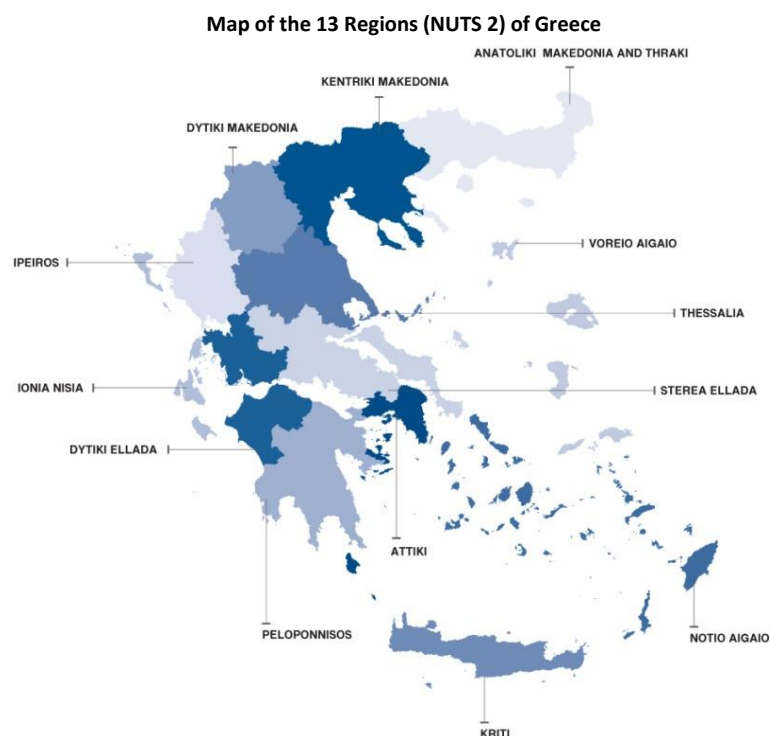
**Legal frame** Regulation (EE) [692/2011](#) of the European Parliament and of the Council.

**Reference unit** Data refer to all establishments (hotels, similar establishments and tourist campsites, NACE Rev.2 55.1, 55.3) that are registered in the Hellenic Chamber of Hotels, while for short-stay accommodation establishments (NACE Rev. 2, 55.2), data derive from the Statistical Register of short-stay accommodation establishments (rooms for rent) of ELSTAT, which is regularly updated by administrative data.

**Reference period** 2023 (Final data).

**Coverage** The survey results refer to 100% of the total of the available bed-places.

**Geographical classification** The geographical classification is based on Nomenclature of Territorial Units for Statistics (Regulation (EC) 1059/2003 as in force).



**Definitions** Resident: Every person, regardless of citizenship, that has resided in Greece for at least a year, or has arrived in Greece with the intention to reside in the country for at least 1 year.

Non-resident: Every person, regardless of citizenship, that is not considered to be resident.

Arrivals: The arrivals at the establishments are calculated for every person separately. The data refer to the total number of persons and not to the total number of rooms that were occupied. Only the persons that had at least one overnight stay at the establishment are counted.

Nights spent: The nights spent are calculated for every person separately. The data refer to the total number of nights spent by every person and not to the total number of nights spent in every room.

Occupancy of bed-places: The monthly occupancy of bed-places is calculated on the basis of the number of the bed-places, as reported by each establishment. The rate refers to the occupancy that was accomplished, as compared with the maximum occupancy that is expected according to the available bed-places.

The occupancy of the period is the result of the average occupancy rates of every month of the period, weighted by the bed-places that were in operation for each month.

### Methodology

Data is collected through a census survey, which conducted on a monthly basis. The results are compiled through the collection and processing of the relevant data submitted, via a questionnaire, by hotels, similar establishments and tourist campsites for each month of operation.



The questionnaires are mostly submitted electronically, via ELSTAT's web application "[Xenios Zeus](#)" or, alternatively, for establishments that this is not possible, in paper form. Data refer to arrivals and nights spent of residents and non-residents on a monthly basis by country of residence of the guests.

For hotel type accommodation establishments and tourist campsites (NACE Rev.2 55.1 and 55.3), the survey is based on ELSTAT's Statistical Register of hotels, similar establishments and tourist campsites, which is regularly updated during the year by data of the Hellenic Chamber of hotels, so that data refer to the actual number of accommodation establishments and campsites that are in operation for each month.

For short stay accommodation establishments (NACE Rev. 2, 55.2), until reference year 2019, data were collected through a sample survey with reference unit the short-stay accommodation establishment. Since reference year 2020, data is collected on a monthly basis from all establishments in operation, for each month of operation. An additional sample collection is carried out throughout the country to enhance the response rate. The survey design (estimation of the sample size, selection of the sample units) is based on ELSTAT's Statistical Register of short-stay accommodation establishments, that is regularly updated by administrative data. For the survey design, the single stratified sampling method is applied.

Non-response to the survey is addressed as follows:

1. Regular reminders are sent out to the establishments that have not responded to the survey, for submitting data.
2. For the percentage of establishments, which despite the reminders have not responded to the survey, supplementary administrative data are used and statistical methods are applied for grossing-up of the results to the total of establishments.

**References** More information at a more detailed geographical level of the survey results on hotels, similar establishments and tourist campsites is available on the website of ELSTAT at: <http://www.statistics.gr/en/statistics/-/publication/STO12/>