



## ISSUING OF MOTOR VEHICLE LICENSES: JUNE 2023

The Hellenic Statistical Authority announces that in June 2023, 23,427 road motor cars (both new and used from abroad) were put into circulation for the first time, recording an increase 10.8% compared with the corresponding month of 2022 when the number of road motor cars was 21,135. In June 2022, a 6.9% decrease had been observed in comparison with the corresponding month of 2021 (Table 1, Graphs 1,2,3,5). A total number of 14,681 new cars were put into circulation in June 2023 compared with 12,202 in June 2022, recording an increase 20.3%.

The new motorcycles over 50cc (both new and used from abroad) that were put into circulation for the first time in June 2023 amounted to 8,765, against 8,347 in June 2022, thus recording a 5.0% increase. In June 2022, a 34.4% increase had been observed in comparison with the corresponding month of 2021 (Table 1, Graph 4). Out of the above motorcycles 8,318 were new, while the corresponding figure in June 2022 was 7,789, recording a 6.8% increase.

During the period January - June 2023, 125,691 road motor cars (both new and used from abroad) were put into circulation for the first time, representing an increase of 13.2% compared to the corresponding period of 2022 when the number of road motor cars was 111,020. During the period January - June 2022 an increase of 5.1% had been observed in comparison with the corresponding period of 2021 (Table 3, Graphs 6,7). Out of the above number of road motor cars that were put into circulation from January to June 2023 76,366 were new, while the corresponding number during the respective period of 2022 was 59,835, recording an increase of 27.6%.

During the period January - June 2023 the circulation of new motorcycles over 50cc (both new and used from abroad) amounted to 35,555 against 31,686 in the respective period of 2022, thus representing a 12.2% increase. An increase of 27.9% had been observed during the period January - June 2022 in comparison with the corresponding period of 2021 (Table 3, Graphs 6,7). A total number of 33,607 new motorcycles were put into circulation, from January to June 2023, compared with 29,209 during the corresponding period of 2022, recording a 15.1% increase.

*Information on methodological issues:*

*Sectoral Statistics Division*

*Transport Statistics Section*

Elpida Kleftogianni, Konstantinos Menexes

Tel: +30 213 135 3087, +30 213 135 3055

e-mail: e.kleftogianni@statistics.gr, k.menexes@statistics.gr

Information for data provision:

Tel: +30 213 135 2022

e-mail: data.dissem@statistics.gr

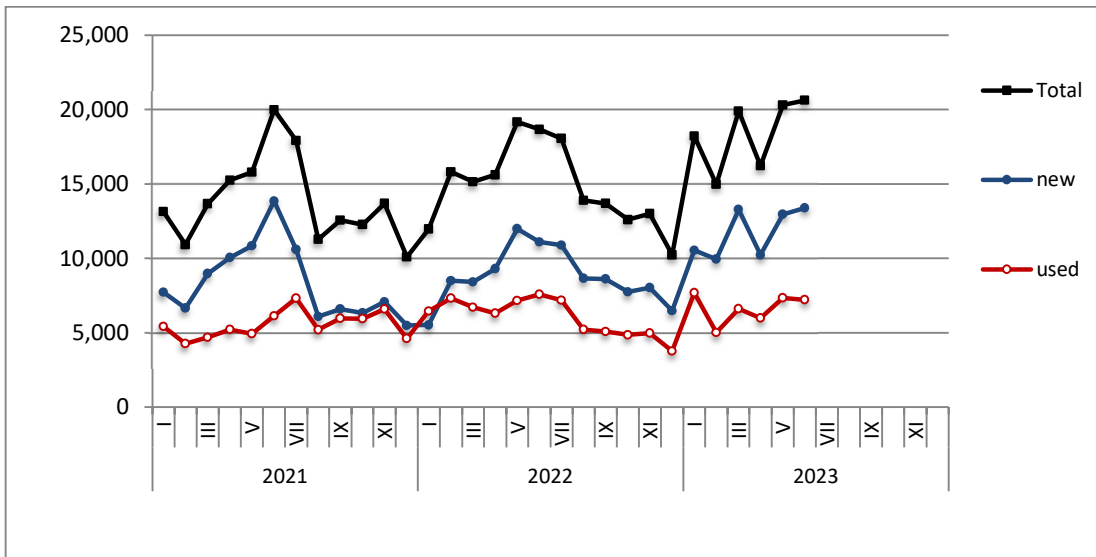
Table 1. Road motor vehicles, both new and used, put into circulation for the first time in Greece: June 2021 - 2023

Category of Road Motor Vehicles	June									Change (%)					
	2021			2022			2023			2022/2021			2023/2022		
	Total	New	Used	Total	New	Used	Total	New	Used	Total	New	Used	Total	New	Used
<b>Greece, total</b>															
Road Motor Vehicles,total	28,901	20,504	8,397	29,482	19,991	9,491	32,192	22,999	9,193	2.0%	-2.5%	13.0%	9.2%	15.0%	-3.1%
<b>1. Road motor cars</b>	<b>22,690</b>	<b>14,803</b>	<b>7,887</b>	<b>21,135</b>	<b>12,202</b>	<b>8,933</b>	<b>23,427</b>	<b>14,681</b>	<b>8,746</b>	<b>-6.9%</b>	<b>-17.6%</b>	<b>13.3%</b>	<b>10.8%</b>	<b>20.3%</b>	<b>-2.1%</b>
Passenger Cars	19,983	13,849	6,134	18,666	11,092	7,574	20,617	13,391	7,226	-6.6%	-19.9%	23.5%	10.5%	20.7%	-4.6%
Buses	142	61	81	88	26	62	104	36	68	-38.0%	-57.4%	-23.5%	18.2%	38.5%	9.7%
Lorries	2,565	893	1,672	2,381	1,084	1,297	2,706	1,254	1,452	-7.2%	21.4%	-22.4%	13.6%	15.7%	12.0%
<b>2. Motorcycles &gt; 50 cc</b>	<b>6,211</b>	<b>5,701</b>	<b>510</b>	<b>8,347</b>	<b>7,789</b>	<b>558</b>	<b>8,765</b>	<b>8,318</b>	<b>447</b>	<b>34.4%</b>	<b>36.6%</b>	<b>9.4%</b>	<b>5.0%</b>	<b>6.8%</b>	<b>-19.9%</b>
<b>Prefecture of Attica</b>															
Road Motor Vehicles,total	15,952	12,829	3,123	15,336	11,317	4,019	17,862	14,119	3,743	-3.9%	-11.8%	28.7%	16.5%	24.8%	-6.9%
<b>1. Road motor cars</b>	<b>13,287</b>	<b>10,268</b>	<b>3,019</b>	<b>12,007</b>	<b>8,128</b>	<b>3,879</b>	<b>14,289</b>	<b>10,671</b>	<b>3,618</b>	<b>-9.6%</b>	<b>-20.8%</b>	<b>28.5%</b>	<b>19.0%</b>	<b>31.3%</b>	<b>-6.7%</b>
Passenger Cars	12,288	9,747	2,541	10,739	7,329	3,410	12,940	9,792	3,148	-12.6%	-24.8%	34.2%	20.5%	33.6%	-7.7%
Buses	38	11	27	32	8	24	58	27	31	-15.8%	-27.3%	-11.1%	81.3%	237.5%	29.2%
Lorries	961	510	451	1,236	791	445	1,291	852	439	28.6%	55.1%	-1.3%	4.4%	7.7%	-1.3%
<b>2. Motorcycles &gt; 50 cc</b>	<b>2,665</b>	<b>2,561</b>	<b>104</b>	<b>3,329</b>	<b>3,189</b>	<b>140</b>	<b>3,573</b>	<b>3,448</b>	<b>125</b>	<b>24.9%</b>	<b>24.5%</b>	<b>34.6%</b>	<b>7.3%</b>	<b>8.1%</b>	<b>-10.7%</b>

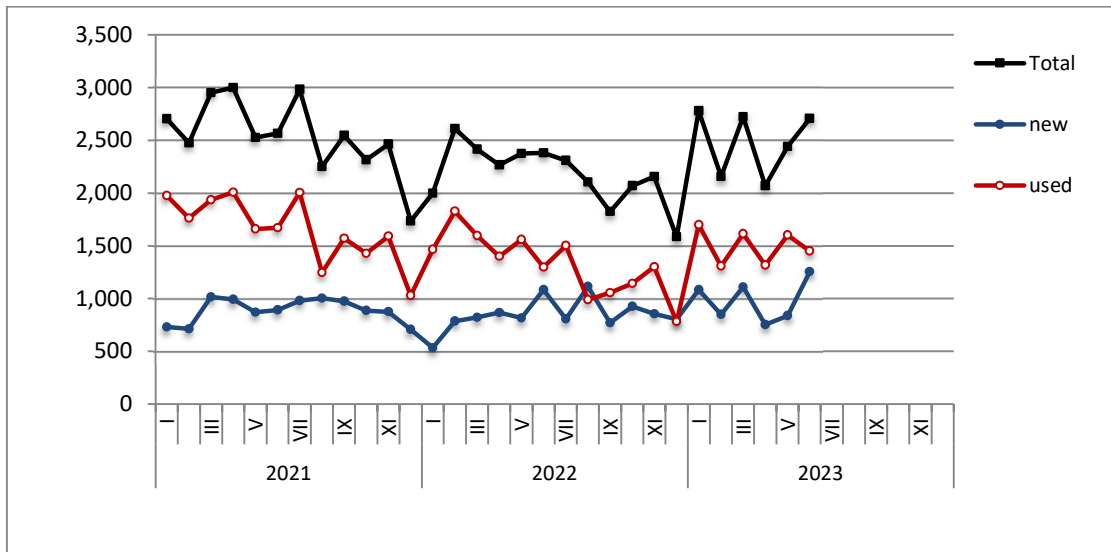
Table 2. Road motor vehicles, both new and used, put into circulation for the first time in Greece: July 2021 – June 2023

Category of Road Motor Vehicles	Average Jul. 2021 - Jun. 2022			Average Jul. 2022 - Jun. 2023			Change (%)		
	Total	New	Used	Total	New	Used	Average Jul. 2022 - Jun. 2023 / Average Jul. 2021 - Jun. 2022		
							Total	New	Used
<b>Greece, total</b>									
Road Motor Vehicles,total	21,638	13,231	8,407	23,631	16,020	7,611	9.2%	21.1%	-9.5%
<b>1. Road motor cars</b>	<b>16,995</b>	<b>8,975</b>	<b>8,020</b>	<b>18,317</b>	<b>11,015</b>	<b>7,302</b>	<b>7.8%</b>	<b>22.7%</b>	<b>-9.0%</b>
Passenger Cars	14,516	8,083	6,433	15,973	10,062	5,911	10.0%	24.5%	-8.1%
Buses	117	31	86	100	23	77	-14.5%	-25.8%	-10.5%
Lorries	2,362	861	1,501	2,244	930	1,314	-5.0%	8.0%	-12.5%
<b>2. Motorcycles &gt; 50 cc</b>	<b>4,643</b>	<b>4,256</b>	<b>387</b>	<b>5,314</b>	<b>5,005</b>	<b>309</b>	<b>14.5%</b>	<b>17.6%</b>	<b>-20.2%</b>

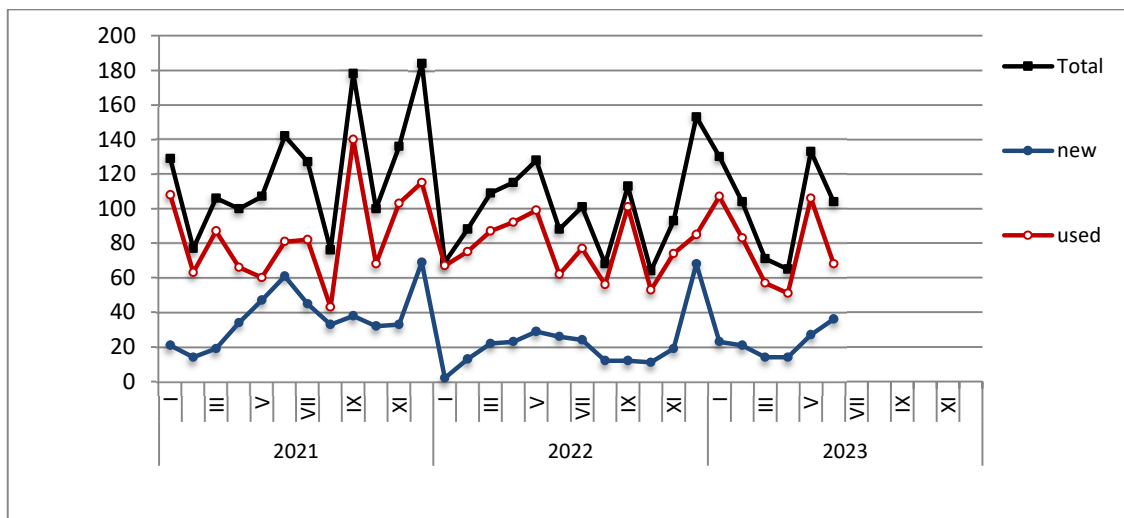
**Graph 1: Passenger Cars (January 2021 – June 2023)**



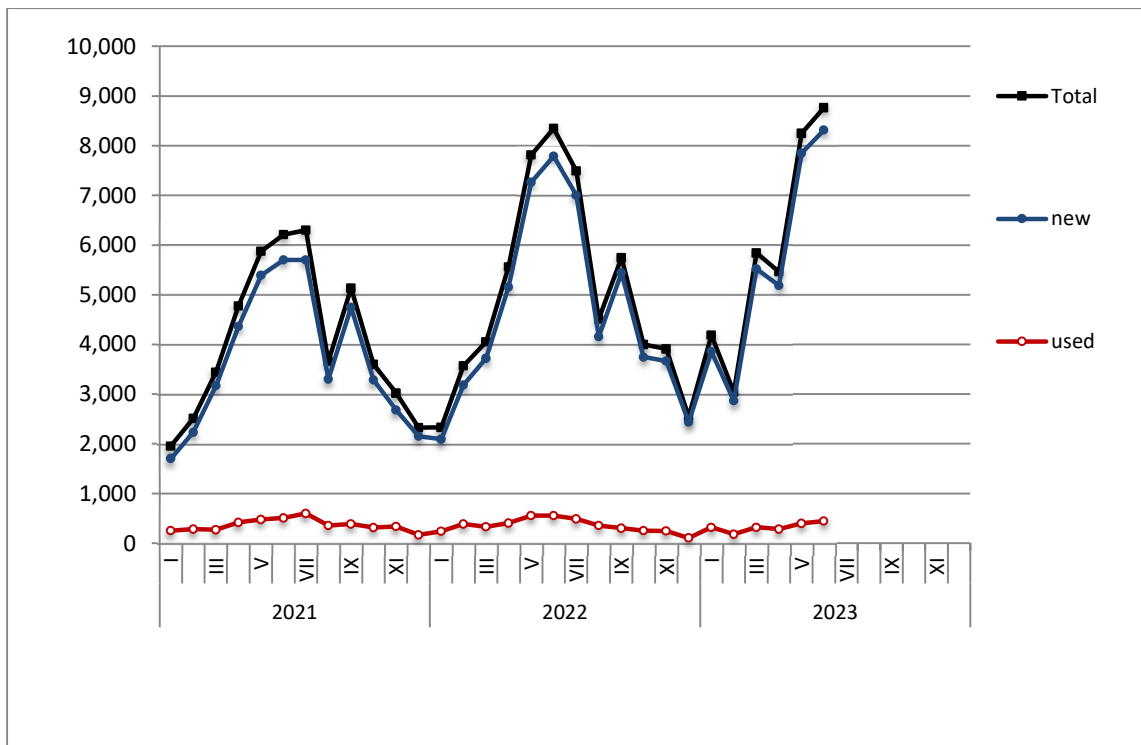
**Graph 2: Lorries (January 2021 – June 2023)**



**Graph 3: Buses (January 2021 – June 2023)**



**Graph 4: Motorcycles (January 2021 – June 2023)**



**Graph 5: New Registrations of Motor Vehicles (June 2023)**

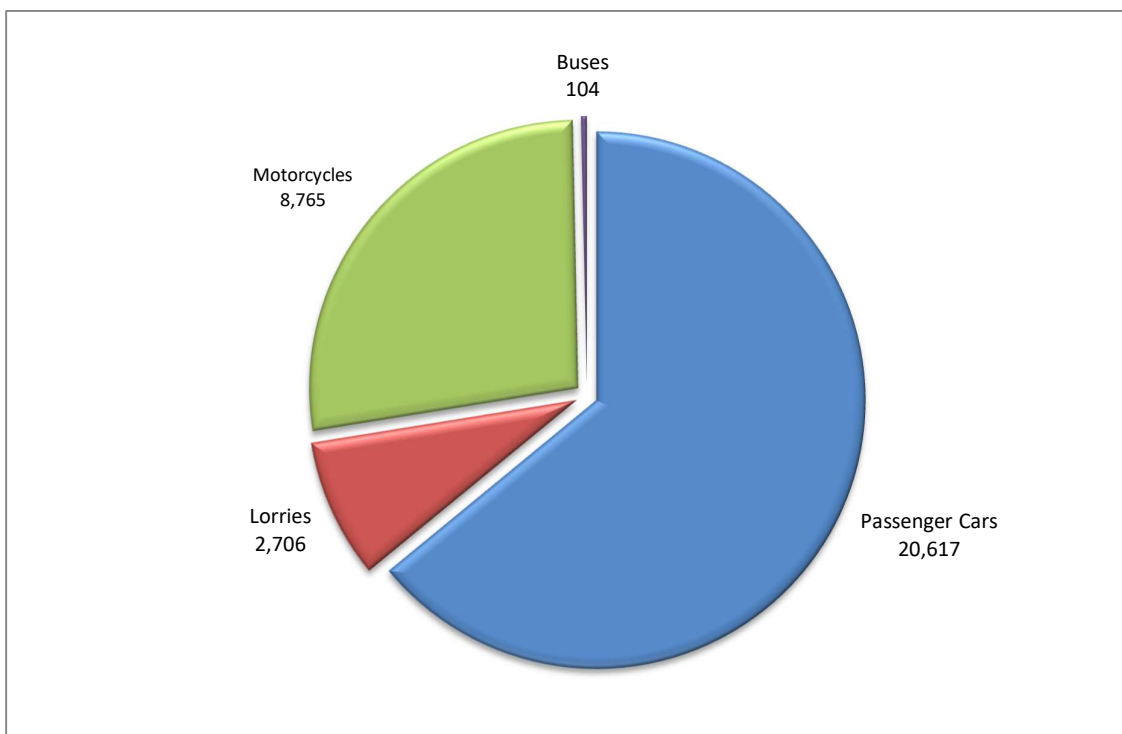
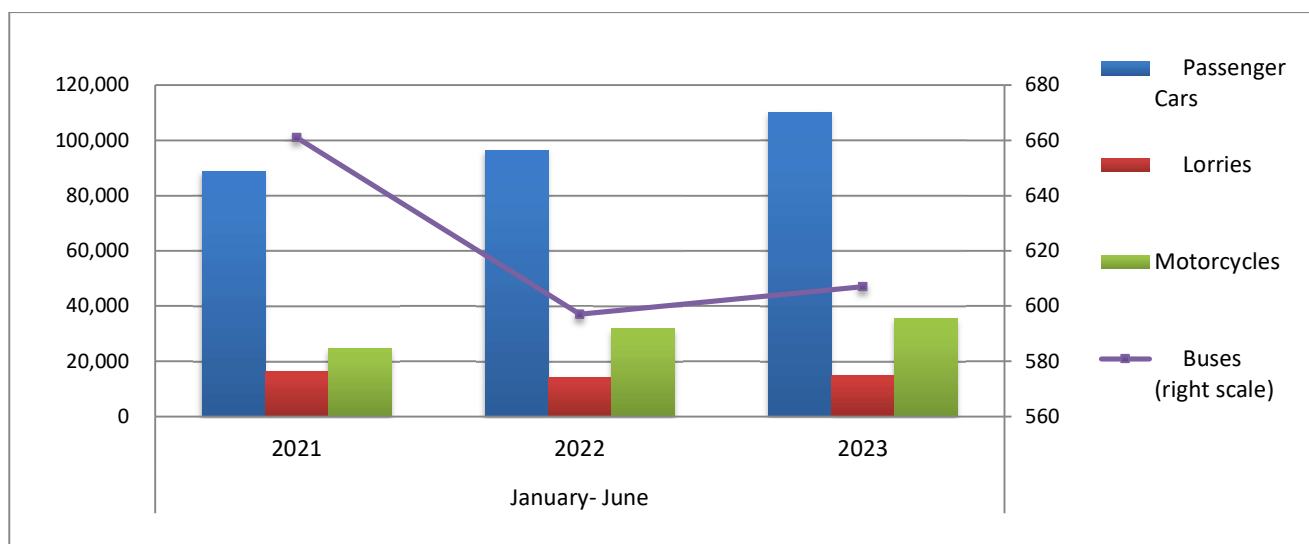
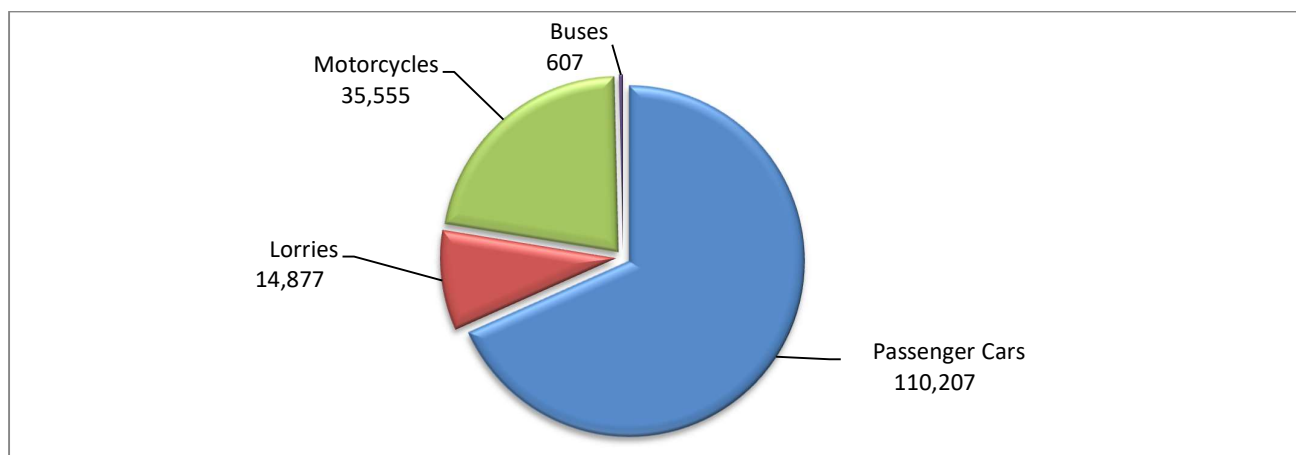


Table 3. Road motor vehicles, both new and used, put into circulation for the first time in Greece: January- June, years 2021 till 2023															
Category of Road Motor Vehicles	January- June									Change (%)					
	2021			2022			2023			2022/2021			2023/2022		
	Total	New	Used	Total	New	Used	Total	New	Used	Total	New	Used	Total	New	Used
<b>Greece, total</b>															
Road Motor Vehicles,total	130,420	86,073	44,347	142,706	89,044	53,662	161,246	109,973	51,273	9.4%	3.5%	21.0%	13.0%	23.5%	-4.5%
1. Road motor cars	105,643	63,507	42,136	111,020	59,835	51,185	125,691	76,366	49,325	5.1%	-5.8%	21.5%	13.2%	27.6%	-3.6%
Passenger Cars	88,762	58,101	30,661	96,374	54,817	41,557	110,207	70,346	39,861	8.6%	-5.7%	35.5%	14.4%	28.3%	-4.1%
Buses	661	196	465	597	115	482	607	135	472	-9.7%	-41.3%	3.7%	1.7%	17.4%	-2.1%
Lorries	16,220	5,210	11,010	14,049	4,903	9,146	14,877	5,885	8,992	-13.4%	-5.9%	-16.9%	5.9%	20.0%	-1.7%
2. Motorcycles > 50 cc	24,777	22,566	2,211	31,686	29,209	2,477	35,555	33,607	1,948	27.9%	29.4%	12.0%	12.2%	15.1%	-21.4%
<b>Prefecture of Attica</b>															
Road Motor Vehicles,total	70,350	53,866	16,484	74,998	53,738	21,260	90,118	69,242	20,876	6.6%	-0.2%	29.0%	20.2%	28.9%	-1.8%
1. Road motor cars	58,618	42,649	15,969	60,728	40,151	20,577	73,884	53,604	20,280	3.6%	-5.9%	28.9%	21.7%	33.5%	-1.4%
Passenger Cars	52,543	39,718	12,825	54,621	36,902	17,719	67,221	49,739	17,482	4.0%	-7.1%	38.2%	23.1%	34.8%	-1.3%
Buses	151	52	99	230	50	180	302	86	216	52.3%	-3.8%	81.8%	31.3%	72.0%	20.0%
Lorries	5,924	2,879	3,045	5,877	3,199	2,678	6,361	3,779	2,582	-0.8%	11.1%	-12.1%	8.2%	18.1%	-3.6%
2. Motorcycles > 50 cc	11,732	11,217	515	14,270	13,587	683	16,234	15,638	596	21.6%	21.1%	32.6%	13.8%	15.1%	-12.7%

**Graph 6. New Motor Vehicles Circulation Licenses: January – June, years 2021 till 2023**



**Graph 7. New Registrations of Motor Vehicles: January – June 2023**



**Table 4**  
**Sales of new and used passenger cars by make: June 2023 and January- June 2023**

Make	Passenger cars			
	June		January- June	
	new	used	new	used
ADRIA	-	1	-	6
ALFA ROMEO	35	40	251	284
ALPINA	1	-	5	-
ASTON MARTIN	-	-	-	1
AUDI	382	128	2,138	667
BENTLEY	-	1	2	3
BMW	397	175	2,866	1,003
BURSTNER	-	1	-	7
BYD	-	-	4	-
CADILLAC	-	-	-	1
CAPRON	-	1	2	7
CARTHAGO	-	-	-	1
CHAUSSON	-	-	1	-
CHEVROLET	-	27	-	143
CHRYSLER	-	-	-	2
CITROEN	715	278	2,347	1,570
CITROEN / DS	254	24	2,744	173
CUPRA	93	2	341	2
DACIA	398	209	1,796	1,103
DAIHATSU	-	1	-	6
DETHLEFFS	-	1	-	2
DODGE	-	-	-	3
DS	91	4	640	21
FERRARI	1	5	1	13
FIAT	300	337	1,815	1,909
FORD	464	560	2,710	2,897
FORD <sup>1</sup>	2	-	2	-
FIAT	-	-	-	1
GENERAL MOTORS	-	-	-	1
GRUAU LAVAL	-	-	-	1
HOBBY	-	-	-	2
HONDA	33	49	111	292
HYMER	-	-	3	4
HYUNDAI	872	555	4,961	3,221
INFINITI	-	8	-	28
IVECO S.p.a/LAIKA CARAVANS SpA	-	-	-	1
JACK	-	1	-	1
JAGUAR	23	11	76	65
JEEP	141	43	1,073	192
JUGUAR	-	-	-	3
KIA	915	159	3,350	773
KNAUS	-	2	-	14
LADA	-	-	-	3
LAMBORGHINI	-	-	-	3
LANCIA	-	2	1	22
LAND ROVER	44	44	320	328

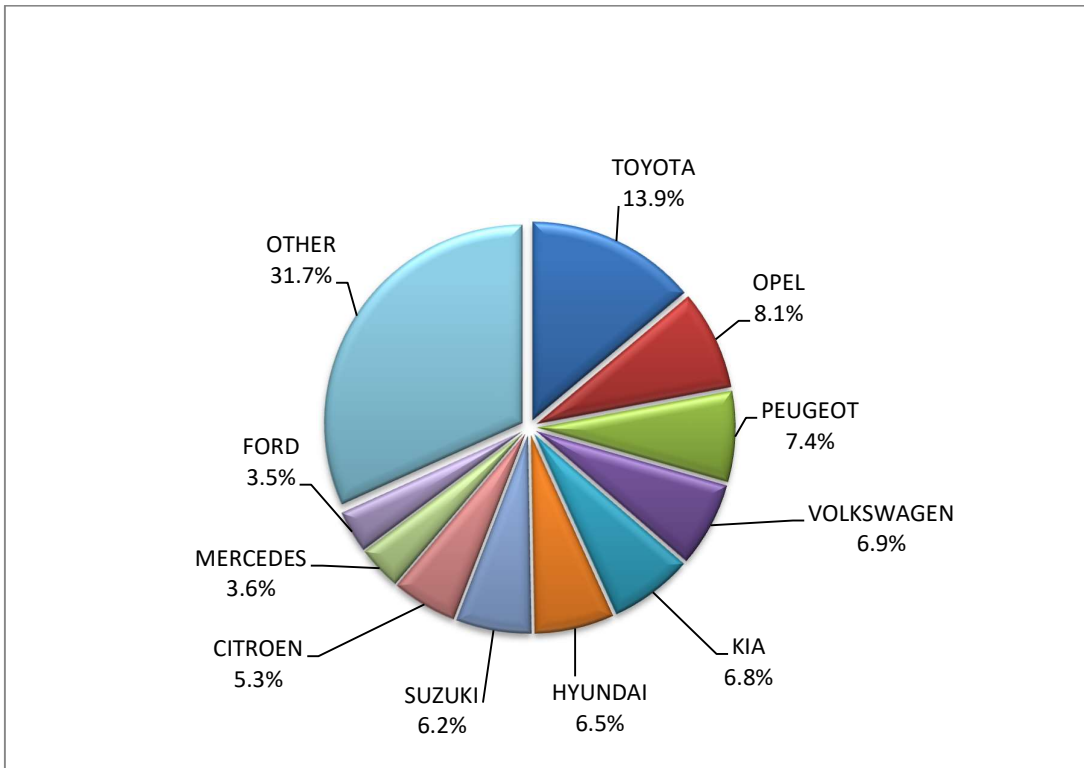
**Table 4 (cont)**  
**Sales of new and used passenger cars by make: June 2023 and January- June 2023**

Make	Passenger cars			
	June		January- June	
	new	used	new	used
LEAPMOTOR	-	-	1	-
LEVC	3	-	4	-
LEXUS	34	12	143	41
LOTUS	-	-	2	2
MASERATI	6	3	27	16
MAZDA	113	27	551	174
MC LOUIS SPA	-	-	-	1
MERCEDES	481	485	2,313	2,697
MERCEDES <sup>1</sup>	-	-	8	-
MERCEDES MAYBACH	-	-	-	2
MINI	318	56	1,101	335
MITSUBISHI	32	101	51	565
MPM MOTORS	-	-	-	1
NISSAN	237	514	1,769	2,750
OPEL	1,089	552	6,984	2,908
PEUGEOT	992	478	5,402	2,455
PEUGEOT <sup>2</sup>	1	-	5	-
PORSCHE	19	52	114	239
RANGE ROVER	5	2	45	18
RELIANT	-	-	-	1
RENAULT	323	822	2,424	4,598
RIMOR	-	-	-	1
ROLLS ROYCE	-	-	-	1
SAAB	-	-	-	5
SEA / ELNAGH	-	-	-	1
SEAT	189	69	1,237	373
SKODA	375	193	1,558	1,097
SMART	15	123	41	652
SSANGYONG	-	1	-	2
SUBARU	8	3	53	50
SUZUKI	826	147	3,091	850
TESLA	105	2	877	18
TOYOTA	1,859	539	8,708	3,150
TRIGANO	-	1	-	3
TRIGANO CL, ROLLER TEAM, CHALLENGER, CHAUSSON	-	-	-	1
VOLKSWAGEN	929	349	5,114	1,944
VOLVO	271	24	1,162	129
WEINSBERG	-	1	-	1
WILLYS	-	1	-	1
ZHIDOU, ZD, ELARIS	-	-	1	-
<b>TOTAL</b>	<b>13,391</b>	<b>7,226</b>	<b>70,346</b>	<b>39,861</b>

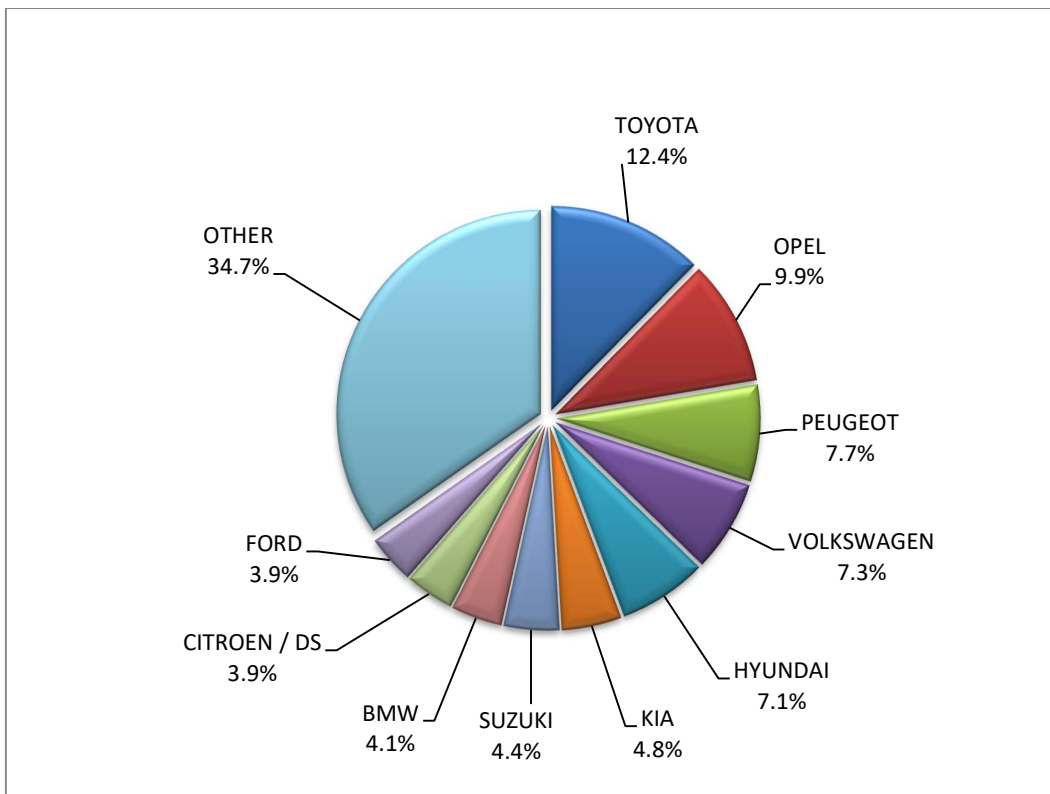
1 : With 2nd/3rd stage manufacturer in Greece.

2 : With 2nd/3rd stage manufacturer abroad.

**Graph 8. Sales of new passenger cars by make (June 2023)**



**Graph 9. Sales of new passenger cars by make (January – June 2023)**





**Table 5**  
**Sales of new and used lorries by make: June 2023 and January- June 2023**

Make	Lorries			
	June		January- June	
	new	used	new	used
ADDAX, ISEKI, STAMA	-	-	1	-
BMC Otomotiv Sanayi ve Ticaret A.Ş. <sup>1</sup>	3	-	4	-
BYD	3	-	19	-
CENNTRO	-	-	3	-
CHRYSLER	-	-	-	1
CITROEN	86	33	364	246
CITROEN DANGEL	1	-	1	-
DACIA	-	6	-	32
DAF	1	43	1	264
DAF <sup>1</sup>	9	-	38	-
DAIHATSU	-	-	-	1
DENNIS EAGLE	-	-	-	3
DODGE	-	-	-	3
FCA US LLC	-	1	-	2
FIAT	150	105	680	702
FIAT DUCATO <sup>1</sup>	-	-	1	-
FIAT-IVECO	-	6	-	17
FORD	150	205	1,162	1,201
FORD <sup>1</sup>	6	-	17	-
GINAF	-	-	-	3
GOUPIL	-	-	1	-
GOUPIL, MEGA, POLARIS, GEM	2	-	3	-
HYUNDAI	-	-	-	15
ISUZU	37	17	147	106
IVECO	3	30	10	221
IVECO <sup>1</sup>	5	-	38	-
IVECO <sup>2</sup>	-	-	3	-
IVECO MAGIRUS	-	-	-	8
IVECO MAGIRUS <sup>1</sup>	3	-	8	-
JEEP	3	1	25	5
KIA	-	-	-	2
KIEFER	-	1	-	1
LAND ROVER	2	2	4	5
LEVC	1	-	2	-
MAN	-	72	2	519
MAN <sup>1</sup>	4	-	15	1
MAXUS, LDV	3	-	14	-
MAZDA	-	1	-	4
MERCEDES	14	387	78	2,228
MERCEDES <sup>1</sup>	26	-	125	4
MERCEDES <sup>2</sup>	-	-	-	1
MITSUBISHI	-	31	8	201
MITSUBISHI <sup>1</sup>	16	1	63	1
NISSAN	9	49	68	305

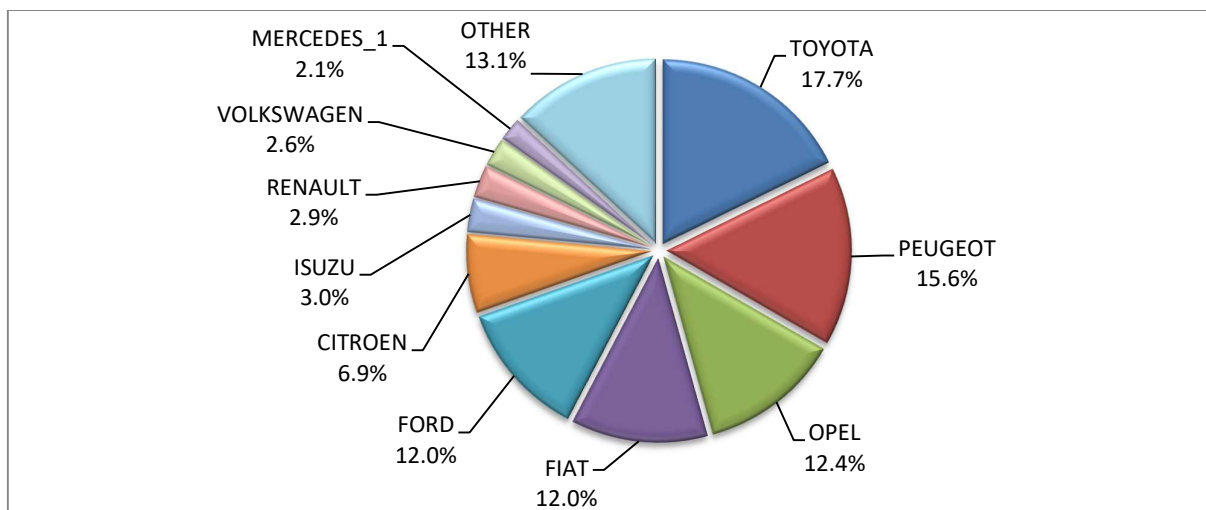
**Table 5 (cont)**  
**Sales of new and used lorries by make: June 2023 and January- June 2023**

Make	Lorries			
	June		January- June	
	new	used	new	used
NISSAN <sup>1</sup>	-	-	2	1
OAF	-	-	-	2
OPEL	155	48	406	285
PEUGEOT	196	39	929	262
PEUGEOT <sup>1</sup>	24	-	66	-
PIAGGIO	4	4	17	30
PIAGGIO <sup>1</sup>	1	-	7	-
RENAULT	36	107	169	583
SAAB	-	-	-	1
SCANIA	-	90	10	519
SCANIA <sup>1</sup>	3	-	6	-
SCATTOLINI, NISSAN	-	-	-	1
SEAT	-	-	-	5
SKODA	-	-	-	1
SSANGYONG	-	-	-	2
SUZUKI	24	-	132	1
TECMEC	-	-	8	-
TOYOTA	222	31	961	168
VOLKSWAGEN	32	53	190	337
VOLVO	15	89	53	692
VOLVO <sup>1</sup>	5	-	24	-
<b>TOTAL</b>	<b>1,254</b>	<b>1,452</b>	<b>5,885</b>	<b>8,992</b>

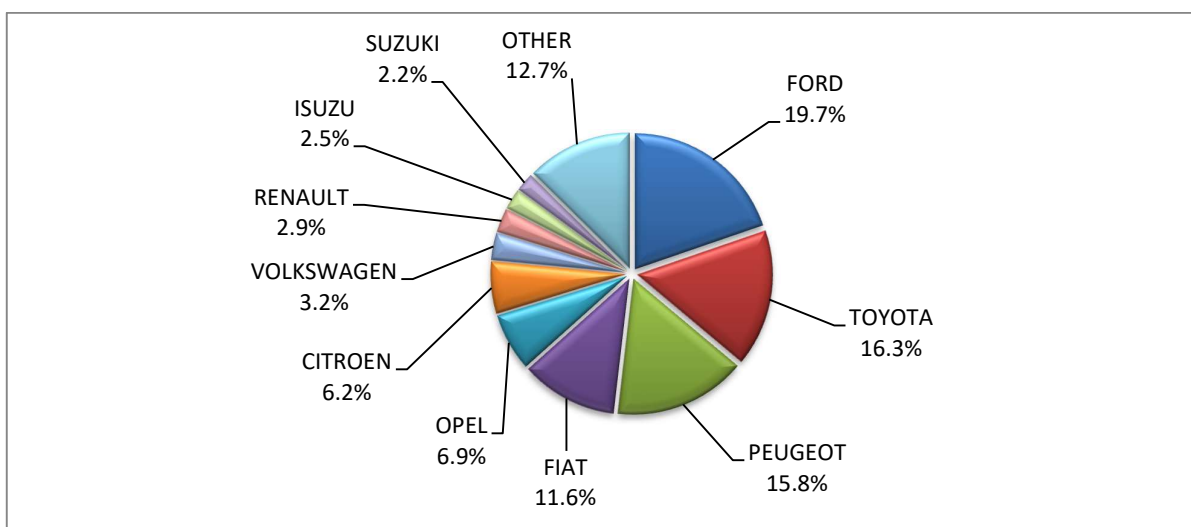
**1 : With 2nd/3rd stage manufacturer in Greece.**

**2 : With 2nd/3rd stage manufacturer abroad.**

**Graph 10. Sales of new lorries by make (June 2023)**



**Graph 11. Sales of new lorries by make (January – June 2023)**



**Table 6  
Sales of new and used buses by make: June 2023 and January- June 2023**

Make	Buses			
	June		January- June	
	new	used	new	used
AYATS	-	1	-	1
BOVA	-	1	-	16
EVOBUS	-	1	-	1
FORD	-	-	-	5
FORD <sup>1</sup>	-	-	4	-
IRISBUS	-	-	-	2
ISUZU	-	-	-	1
ISUZU, ANADOLU ISUZU, TURKUAZ, TURQUOISE, AIOS, AOS, GLOBUS	-	-	1	-
ISUZU, AOS, GLOBUS	-	-	3	-
IVECO	-	2	-	4
IVECO <sup>1</sup>	1	-	1	-
KASSBOHRER	-	-	-	1
KING LONG	-	-	2	-
MAN	1	2	10	43
MAN/NEOPLAN	-	1	-	3
MERCEDES	-	51	3	324
MERCEDES <sup>1</sup>	30	1	90	3
MERCEDES <sup>2</sup>	3	4	11	9
NEOPLAN	-	-	3	8
OTOKAR	-	-	-	3
RAMPINI	-	-	3	-
SCANIA	-	1	-	2
SETRA	-	3	-	27
TEMSA	1	-	4	11

**Table 6 (cont)**  
**Sales of new and used buses by make: June 2023 and January- June 2023**

Make	Buses			
	June		January- June	
	new	used	new	used
VAN HOOL	-	-	-	3
VOLKSWAGEN	-	-	-	1
VOLVO	-	-	-	3
XIAMEN KING LONG	-	-	-	1
<b>TOTAL</b>	<b>36</b>	<b>68</b>	<b>135</b>	<b>472</b>

**1 : With 2nd/3rd stage manufacturer in Greece.**

**2 : With 2nd/3rd stage manufacturer abroad.**

**Graph 12. Sales of new buses by make (January – June 2023)**

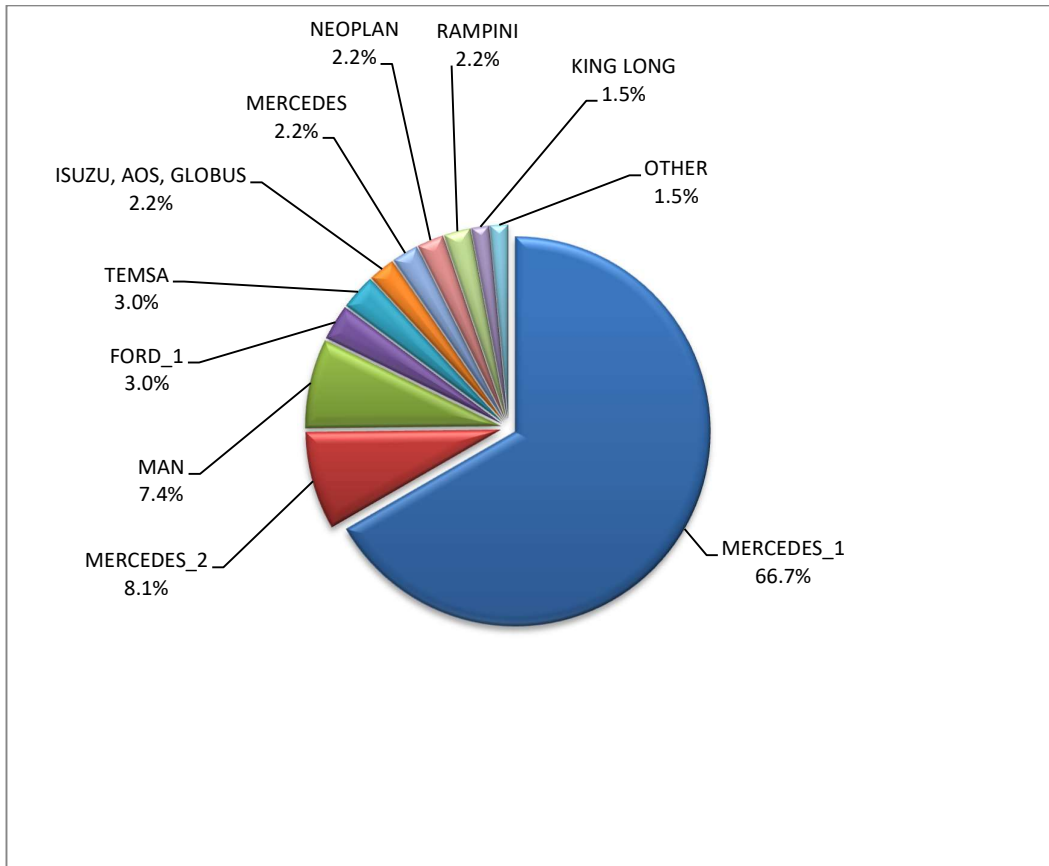


Table 7

## Sales of new and used motorcycles by make or manufacturer: June 2023 and January- June 2023

Make	Motorcycles			
	June		January- June	
	new	used	new	used
AEON MOTOR	-	1	-	2
AGUSTA MV	-	-	-	1
AJP	-	-	1	-
ALRENDO	-	-	1	-
APRILIA	65	5	313	17
ARIIC, JINLANG	6	-	18	-
ARMONY, ARORA, BUKE, BULL MOTORS	11	-	24	-
BAJAJ	5	-	21	-
BAOTIAN, SUPERKING, WALTON, HONDA	-	-	1	-
BASHAN, AMGroup, AMGroup Bike, DON, IRBIS, WORKER BEAR, Nomik ATV 2	7	-	19	-
BAW	8	-	8	-
BENDA, KEEWAY, BDMOTO	-	-	2	-
BENELLI	114	1	404	4
BETA	2	1	71	4
BMW	121	38	597	195
BOMBARDIER RECREATIONAL PRODUCTS ING (BRP)	1	1	6	8
BRIXTON	17	1	76	1
BRP	-	-	-	1
BUELL	-	-	-	1
CAKE	-	-	1	-
CFMOTO	359	-	1,346	5
CFMOTO, KEEWAY	12	-	26	-
CFMOTO, ZEEHO	8	-	8	-
CHANGJIANG	-	-	-	4
CLUB CAR, LLC	-	-	-	1
DAELIM	-	-	-	1
DAYANG, DAYTONA MOTORS, NIPPONIA, DOCKER, WAYEL, SUMCO, VEEROAD, CETUR, RUTEC	3	-	4	-
DAYANG, DAYTONA MOTORS, NIPPONIA, DOCKER, WAYEL, SUMCO, VEEROAD, CETUR, RUTEC, ZENKO	3	-	15	-
DAYANG, DAYTONA MOTORS, NIPPONIA, DYMOTO, DOCKER, VEEROAD, EVO MOTORS, SUMCO, CETUR, HANSOM	5	-	26	-
DAYANG, DAYTONA MOTORS, NIPPONIA, DYMOTO, VEEROAD, EVO MOTORS, MH MOTORCYCLES, FKM, FKMOTORS,	27	-	85	-
DAYANG, DAYTONA MOTORS, NIPPONIA, KUBA, VEEROAD, SUMCO, CETUR, RUTEC	149	-	487	2
DAYANG, DAYTONA MOTORS, NIPPONIA, VEEROAD, DOCKER	402	-	1,565	1
DAYANG, ECOCREMO, ECOOTER, ECOOTOR,AGM, ORCAL, SUMCO	-	-	3	-
DAYANG, NIPPONIA, DAYTONA MOTORS, VEEROAD, SUMCO, DOCKER, MH MOTORCYCLES	3	-	5	-
DAYI MOTOR	1	-	1	-
DAYTONA	15	-	18	-
DAYTONA MOTORS, DAYANG, DYMOTO, NIPPONIA, MH MOTORCYCLES, ORCAL, SUMCO, RUTEC, AJS	4	-	6	-
DAYTONA MOTORS, DAYANG, NIPPONIA, DYMOTO, DOCKER, VEEROAD, EVO MOTORS, SUMCO, CETUR, HANSOM, RUTEC	14	-	33	1
DAYTONA MOTORS, EVO MOTORS, LONGJIA, ORCAL, NECO, VGA, ROMET MOTORS, DRAX, MONDIAL, JUNAK, ONLINE	1	-	24	-
DAYTONA MOTORS, YINGANG, KUBA, RKS, SKYJET, MAGPOWER, MITT, VENTUR, ARCHIVE MOTORCYCLE	3	-	17	-
Daytona Motors, ZONTES, TAYO, KIDEN, Haojiang, ZHONGYU, Sharpon, TANNY, TYAN, Senke, B BETA	38	-	39	-

**Table 7 (cont)**

**Sales of new and used motorcycles by make or manufacturer: June 2023 and January- June 2023**

Make	Motorcycles			
	June		January- June	
	new	used	new	used
DERBI	-	1	-	2
DOOHAN	-	-	1	-
DUCATI	19	13	104	43
E TUK FACTORY	-	-	1	-
E.F.O., GOLDEN LION, SAKURA, ARTISAN, Fauro, ETALIAN, Viverra, Varaneo, Kito, E-mio, velca, E-KUMA, BOLIDE	3	-	8	-
E-BROH	-	-	1	-
ECOOTER, ETRIX, AGM, DRAX, ORCAL, SUMCO	2	-	3	-
EFUN, PULSE, ZAP	-	-	1	-
EFUN, ZAP	10	-	82	1
EMBUGGY, EVANGEL, The Original BeachBuggy, Beach Buggy	27	-	43	-
EVA, EMBUGGY, VINTAGE, EVANGEL	-	-	2	-
FANGPOWER, Kontio Motors	9	-	40	-
FANTIC MOTOR	1	1	6	2
FD MOTORS, FASPIDER, Daytona Motors, EVO Motors, Veeroad	9	-	18	-
FD MOTORS, FASPIDER, DAYTONA MOTORS, NIPPONIA, QUANTYA	9	-	22	-
FELQ	-	-	2	-
FENGCHENG, FULLCHEER, Barman-pakro, NITSURO, VOLDORK, SPIMRI, Elektra EV, EK0e, BITMART	1	-	4	-
GASGAS	3	-	9	4
GENERIC,EXPLORER,MALANCA,KSR Moto Austria, Motron Motorrad	4	-	11	-
GILERA	-	-	-	1
GILERA, PIAGGIO	-	1	-	2
GOLDEN LION, SAKURA, ARTISAN, ETALIAN, E-mio, Fauro, Kito, Varaneo, Virerra, E.F.O., BOLIDE, E-KUMA, velca	3	-	8	-
GPX	7	-	39	-
GUSITE, RKS, KUBA, KOKO, KAVIR, BECANE, EVO MOTORS, Daytona MOTORS, SUMCO, SKYJET	2	-	39	-
Haojiang, ZONTES, TAYO, Sharpon, IFINO, KIDEN, ZHONGYU, CUBTOM, DIYUN, NAMIN, TIM DERVI, VUKA, THUMP, R-ipper	17	-	46	-
HARLEY DAVIDSON	-	17	4	67
HONDA	1,412	81	6,996	327
HORWIN	3	-	9	-
HUSQVARNA	10	1	56	17
HYOSUNG	-	-	2	-
INDIAN MOTORCYCLE	2	-	17	-
ITALJET	-	-	2	-
JAWA	-	-	1	-
JCADI, TILGREEN, Grupo Invicta MOTOR, e-broh, FAURO	1	-	2	-
JIAJI, HUATIAN, FEILING, LINTEX, GOMAX, SOMOTO, TECHMOOVE, TAURIS	-	-	1	1
JIANSHE	-	-	1	1
JIAYUAN	5	-	59	-
JINLING	-	-	-	1
JNEN, JUNENG, ZIPP, MOTORAN, HORS,FLEX TECH, RAZZO, TOROS, ONE, JUNAK	11	-	35	-
JONWAY, JMSTAR, SHENKE, HUIBANG	-	-	-	1
KAWASAKI	24	8	73	48
KEEWAY	-	-	-	3
KSR MOTO AUSTRIA, MOTRON MOTORRAD	4	-	15	-
KTM	58	20	185	111
KUBA, MH MOTORCYCLES, MGB, SHINERAY, Daytona Motors, MASH	8	-	27	-
KYMCO	277	51	1,149	229

**Table 7 (cont)**

**Sales of new and used motorcycles by make or manufacturer: June 2023 and January- June 2023**

Make	Motorcycles			
	June		January- June	
	new	used	new	used
LAMBRETTA	3	-	7	-
LIFAN, HONLEI, SKYGO, BISAN-LIFAN	-	-	1	1
Lingzhida, LINZDA, LINDN, LINYI, LONGMAO, NLIGHT	3	-	16	-
LINHAI, LHY, KUBA, ONLINE	16	-	19	2
LML	-	1	-	2
LOJO, SUNPULSE, YGM	3	-	20	-
LONCIN, KINLON, LONGTING, KUBA, YUKI, MONDIAL, STMAX, KANUNI, MOTORAN, ASYA, QUSWA, PUMAREX, RALLY USA, MOD, CCM	20	-	69	-
LONCIN, KINLON, X-GEAR, BLADE	1	-	1	-
LONCIN, KUBA, RKS, ITALIKA, SUNRACE, SKY, MALAGUTI, SUPERBIKE, ROCKET, NOVELBAT, TIGREMOTO, GREEN	2	-	10	-
LONCIN, KUBA, RKS, ITALIKA, VOGÉ, SUNRACE, SKY, MALAGUTI, ROCKET, SUPERBIKE, NOVELBAT, TRIDIAMOND	49	-	199	-
LONCIN, VOGÉ	11	-	79	-
LONCIN, VOGÉ, KUBA, RKS, ITALIKA, SUNRACE, SKY, MALAGUTI, SUPERBIKE, ROCKET, NOVELBAT, TIGREMOTO, GREEN	12	-	41	-
LONCIN, VOGÉ, VOGÉPRO	28	-	71	-
LONGJIA, ITALJET, ORCAL, BEELINE, ROMET MOTORS, GEMINI, LEXMOTO, JAHANRO, VGA, DAYTONA MOTORS	-	1	1	1
LONGJIA, ORCAL, NECO, ALFASCOOTERS, VGA, ROMET MOTORS, RYMCO, ASUS, OVER, CAROLYN, KANUNI, BTC, TURBHO, ITALMOTO	10	1	87	2
LONGJIA, ORCAL, NECO, VGA, ROMET MOTORS, ROUTER, lexmoto, Gemini, MH, motorcycles	3	-	10	-
LONGJIA, ORCAL, NECO,ALFASCOOTERS, VGA, ROMET MOTORS, BARTON MOTORS, OVER, CAROLYN, KANUNI, BTC	26	-	111	-
LONGJIA, ORCAL,NECO,VGA, ROMET MOTORS	11	-	58	-
LUQI, TWISTER WHEEL, SPYDER WHEELZ, DJJD, GTS, TEKUON, Eway, Emoto, Bikers, i-coco	-	-	1	-
LVNENG	2	-	16	-
MACBOR, RVM, COLOVE, ORCAL, DAYTONA MOTORS, ZF-KY, Lexmoto, OVER BIKES, YUKI, AJS	20	-	74	-
MALAGUTI	44	-	142	4
MBK	1	1	5	3
MELEX	5	-	10	-
MGK HM	316	-	1,019	1
MICRO	7	-	7	-
MINSK, ZONGSHEN, IRIBIS, MONDIAL, LEXMOTO, JUNAK, HONLEY, OVERBIKES	-	-	3	-
MODENAS	-	1	-	1
MONDIAL, UGUR, YIBEN, DERRACE, ISILDAR, TGB, APACHI, ISILDAR APACHI	1	-	4	-
MOTO GUZZI	6	-	44	-
MOTO MORINI	2	-	13	-
MOTRON MOTORRAD, ZONGSHEN	1	-	2	-
MV AGUSTA	-	-	2	3
NACIONAL MOTOR SAU	-	-	-	1
NIU, NUUV	4	-	17	-
OPAI	-	-	2	-
ORCAL, SOMOTO, AJS, SENKE, HERALD, ITALJET, WACCO, MOTOBİ, CLEVELAND CYCLEWERKS ACE, MERCURY, SAXXX, SFM	-	-	-	1
PEUGEOT	34	2	34	8
PIAGGIO	1,163	56	4,438	215
PILOT CAR	-	-	2	-

**Table 7 (cont)**

**Sales of new and used motorcycles by make or manufacturer: June 2023 and January- June 2023**

Make	Motorcycles			
	June		January- June	
	new	used	new	used
POLARIS	23	-	77	2
POLINI	-	-	-	1
PURSANG	-	-	1	-
QINGQI, PIONEER	-	-	-	1
QJ, QJIANG, KEEWAY, LEONE, KUBA, RKS, BENELLI, VENGO,QJMOTOR, B MOTOBI, ONLINE	-	-	22	-
QJ, QJIANG, KEEWAY, LEONE, RKS, BENELLI, EMPIRE KEEWAY, KUBA	1	-	7	-
QJ, QJIANG, QJMOTOR, B MOTOBI	43	-	81	-
QUADRO VEHICLES	-	1	-	1
RAY ELECTRIC MOTORS	-	-	2	-
REDMOTO	-	-	6	1
RENLI	24	-	51	-
RHON	-	-	-	1
ROYAL ENFIELD	41	-	172	1
Royalloy, Royal Alloy, RA	1	-	7	-
SAKURA, GOLDEN LION, ARTISAN, Fauro, ETALIAN, Viverra, Varaneo, Kito, E-mio, velca, E.F.O,E-KUMA, BOLIDE, LINZE	3	-	6	-
SAN YANG	-	1	-	3
SCUTUM, ETRIX, SILENCE	1	-	6	-
SEGWAY	16	-	66	-
SHANYANG, ATLAS PANTHER, YAMAZUKI MOTO, MOTORKING, Hirlee, XB	-	-	5	-
SHERCO	1	-	12	-
SHINERAY, SWM	-	-	9	-
SILENCE, SCUTUM, ETRIX	-	-	19	-
SKYTEAM, SACIN, CSR, METALCO, SOKUDO, BAZUKA, MINICO, MOTOSBASI, MOTOS BORDOY, SUMKO, ROXON, MONKEY BIKES	2	2	14	2
STANDARD MOTOR	-	1	-	1
SUZUKI	65	23	217	88
SYM	2,170	14	8,416	83
TARO, JUNAK, BARTON MOTORS ,ORCAL, Lexmoto	58	-	147	-
TARO, JUNAK, BARTON MOTORS, ORCAL, Lexmoto, MITT, NECO, WOTTAN, MAGPOWER, ADAMOTO MOTORCYCLES	3	-	5	-
TARO, JUNAK, BARTON MOTORS, ORCAL, Lexmoto, MITT, NECO, WOTTAN, MAGPOWER, ADAMOTO, MAXON, MAX-ON, TRMOTOR, CHUANL	15	-	42	-
TARO, TRMOTOR, CHUANL, JUNAK, BARTON MOTORS, ORCAL, Lexmoto, MITT, NECO, WOTTAN, MAGPOWER, ADAMOTO MOTORCYCLES	8	-	21	-
TARO, TRMOTOR, CHUANL, JUNAK, BARTON MOTORS, ORCAL, Lexmoto, MITT, NECO, WOTTAN, MAXON, MAX-ON, MOTOBI	3	-	5	-
TAYO, HAOJIANG, ZHONGYU, THUMP, THUMPSTAR, KIDEN, ZONTES, Junak, SENKE, TANNY, TYAN, ROMET, ROMET MOTORS, ROUTER	10	-	51	-
TAYO, HAOJIANG, ZHONGYU, THUMP, THUMPSTAR, KIDEN, ZONTES, Junak,SENKE, TANNY, TYAN, ROMET	5	-	26	-
TAYO, HAOJIANG, ZHONGYU, THUMP, THUMPSTAR, KIDEN, ZONTES, Junak, SENKE	21	-	68	-
TAYO, ZONTES, KIDEN, Haojiang, ZHONGYU, Sharpon, TANNY, TYAN, Senke, B BETA, Daytona Motors	25	-	93	-
TAZZARI	-	-	1	-
TGB	8	-	23	-
TIANMA	-	-	-	1
TIANYING, RIYA, HONGYUNDA, TYM, HONLING, SANBEN, XINBEN, TAMCO, ALISON, DMK MOTORS	3	-	14	-
TINBOT, KOLLTER, MASAI, INTO, VIARELLI, EDRIVE, DuroCar, MGK HM, Fauro, BRINCO	1	-	4	-

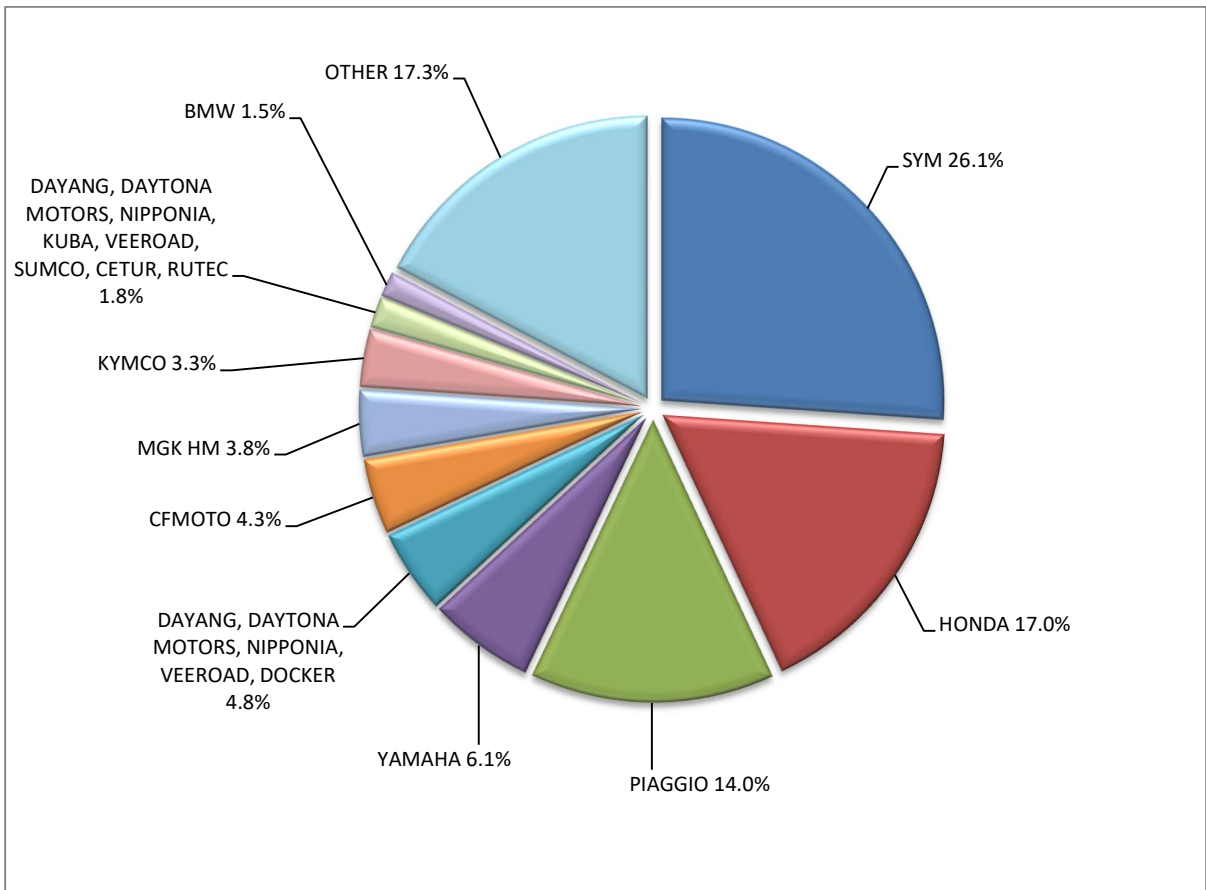


**Table 7 (cont)**

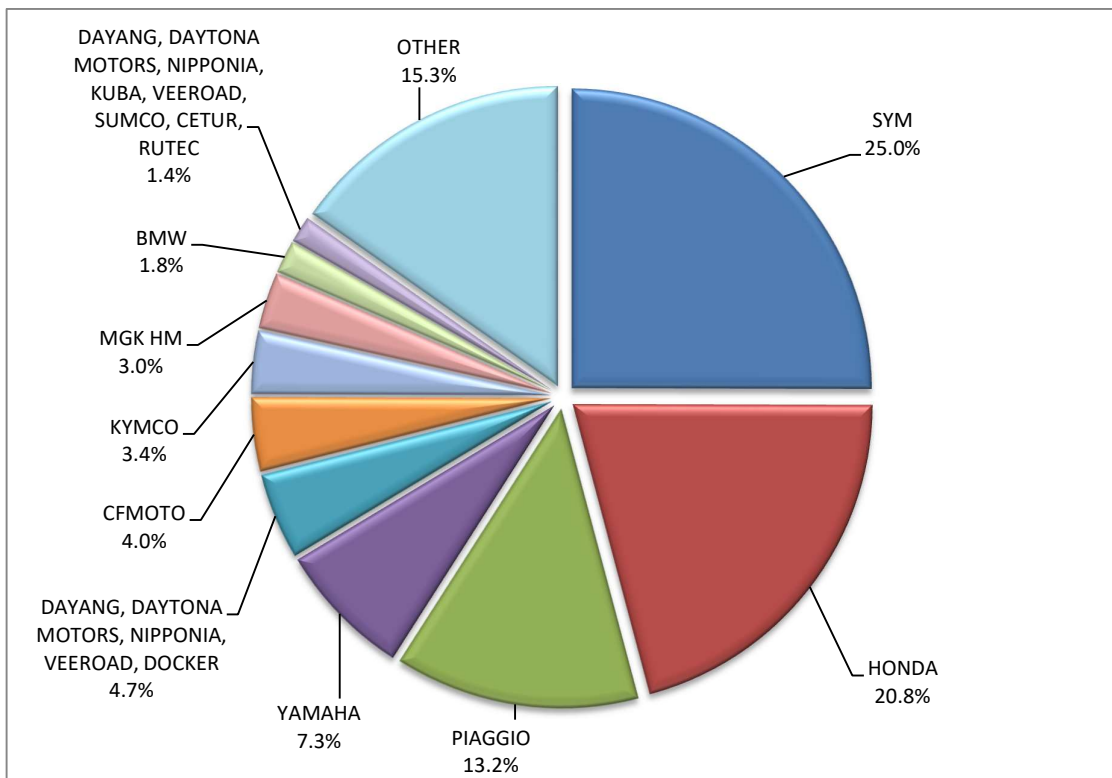
**Sales of new and used motorcycles by make or manufacturer: June 2023 and January- June 2023**

Make	Motorcycles			
	June		January- June	
	new	used	new	used
TISTO, ETRIKOSKG	1	-	2	-
TM RACING	1	-	2	1
TODAY SUNSHINE	-	-	1	-
TRIUMPH	32	2	126	19
TROMOX	1	-	1	-
UM	-	-	4	-
VINCENHRD	-	1	-	1
VMOTO-SOCO, E-MAX, VMOTO, SUPER SOCO	16	-	43	1
VOLTA, VTA, REVOLT	-	-	5	-
WANGYE, SANBEN, UM, KENOS, SUPERBYKE, MDC, MISTRAL	16	-	37	-
WG TRIKE	-	-	-	1
WONJAN,THRUST MOTOR, WMOTO, KEEWAY, TD	9	-	73	-
WOW!	-	-	1	-
XEV, X, XEV YOYO	1	-	1	-
XINRI, SUNRA ,APACHI, ISILDAR, ISILDAR APACHI, Wayscral, KRAL	14	-	23	-
YADEA	2	-	9	-
YAMAHA	507	96	2,465	381
YASAN MOTOR, Kito	-	-	1	-
YINGANG, BENYI, ROMET MOTORS, YUKI, ROUTER, MOTORAN, DAYTONA MOTORS, M1NSK, KUBA, MONDIAL	-	1	-	1
YINXIANG, KENBO, VENOM, CHEETA, ZIPP, NEMO, FEKON, ANATOLIA, CANBO	1	-	2	-
YINXIANG, MONDIAL, GEMINI, TCB	1	-	2	-
YIYING	-	-	2	-
ZERO MOTORCYCLES	-	-	6	1
ZHIDOU , ZD, RKS	2	-	45	-
ZHONGNENG, ZNEN, AGM, AJS, YUKI, COLIBRI	-	-	-	1
ZHONGNENG, ZNEN, AGM, BTC, CLS, COLIBRI	-	-	1	-
ZHONGNENG, ZNEN, AGM, BTC, CLS, COLIBRI, DAYTONA MOTORS, DERRACE, DOCKER, JM MOTORS, KUBA	14	-	29	-
<b>TOTAL</b>	<b>8,318</b>	<b>447</b>	<b>33,607</b>	<b>1,948</b>

**Graph 13. Sales of new motorcycles (June 2023)**



**Graph 14. Sales of new motorcycles (January – June 2023)**



## EXPLANATORY NOTES

<b>Survey on the issuing of new road motor vehicle circulation licenses</b>	The survey on the issuing of new motor vehicle circulation licenses is a census survey. The released data give information, at country level, on the brand and type of the motor vehicle, as well as whether it is new or used. The survey does not include vehicles that move on rails, trolley busses, agricultural tractors and machinery. In addition, the following are excluded: all motor vehicles of the Armed Forces, Police, Fire Brigade, State Services, Diplomatic Corps, Foreign Missions, and Invalids of Wars, as well as motorcycles with a cylinder capacity less than 50 cc.
<b>Legal basis</b>	Law 3832/2010
<b>Reference Period</b>	June 2023
<b>Coverage</b>	The production of monthly data is based on the registers held by the Ministry of Infrastructure, Transport and Networks, which records all the monthly changes observed in the vehicle registration licenses at country level.
<b>Definitions</b>	<p><b>Road motor vehicle</b> is any vehicle that, irrespective of the number of wheels, is moved by an engine and is designed to transport persons or cargo or both of them, either they are on the same single vehicle or on a trailer carried by the main motor vehicle.</p> <p><b>New</b> road motor vehicle is any motor vehicle that is registered for the first time in Greece during the reference month and has not been put into circulation in any other country.</p> <p><b>Used</b> motor vehicle is any motor vehicle that is registered for the first time in Greece and has been imported as a used one from abroad</p> <p><b>Passenger motor vehicle:</b> it is a motor vehicle designed to carry mostly people, having no more than 9 seats, including the driver's seat.</p> <p><b>Bus:</b> it is a motor vehicle, which is designed to carry mostly people, having more than 10 seats, including the driver's seat. In the corresponding tables of this announcement, this category also includes articulated buses.</p> <p><b>Lorry:</b> it is motor vehicle designed to carry mostly cargo. In the corresponding tables of this announcement, this category also includes tractors, tow trucks, articulated tractors, and trucks with trailers.</p> <p><b>Motorcycle:</b> any two-wheeled motor vehicle, with or without sidecar, with maximum authorized design speed over 45 km/h, or in case it is powered by a combustion engine, with a cylinder capacity of 50 cc or over. In the corresponding tables of this announcement, this category also includes the three-wheeled motor vehicles – motor tricycles.</p> <p><b>Tricycle motor vehicle:</b> it is a motor vehicle with three symmetrical wheels with maximum authorized design speed over 45 km/h, or in case it is powered by a combustion engine, with a cylinder capacity over the 50 cc. This category also includes four-wheel vehicles, except the light four-wheel motorcycles, whose empty vehicle tare (excluding the weight of the fuel or mixture of fuel-oil or the weight of the batteries for electric cars) is up to 400 kg in the case the vehicle is designed for passenger use or up to 550 kg in case the vehicle is designed to carry cargo and whose engine is up to 15KW.</p>
<b>Methodology</b>	Exhaustive Survey. The primary data derive from the Ministry of Infrastructure, Transport and Networks and are based on the issuing of new circulation licenses as they are registered by the Regional Offices for Transport and Communications.
<b>References</b>	More information (graphs, tables) concerning the survey on the issuing of new motor vehicle circulation licenses are available on the webpage of ELSTAT, <a href="http://www.statistics.gr">www.statistics.gr</a> , under the link <a href="http://www.statistics.gr/en/statistics/-/publication/SME24/">http://www.statistics.gr/en/statistics/-/publication/SME24/</a>