



PRESS RELEASE

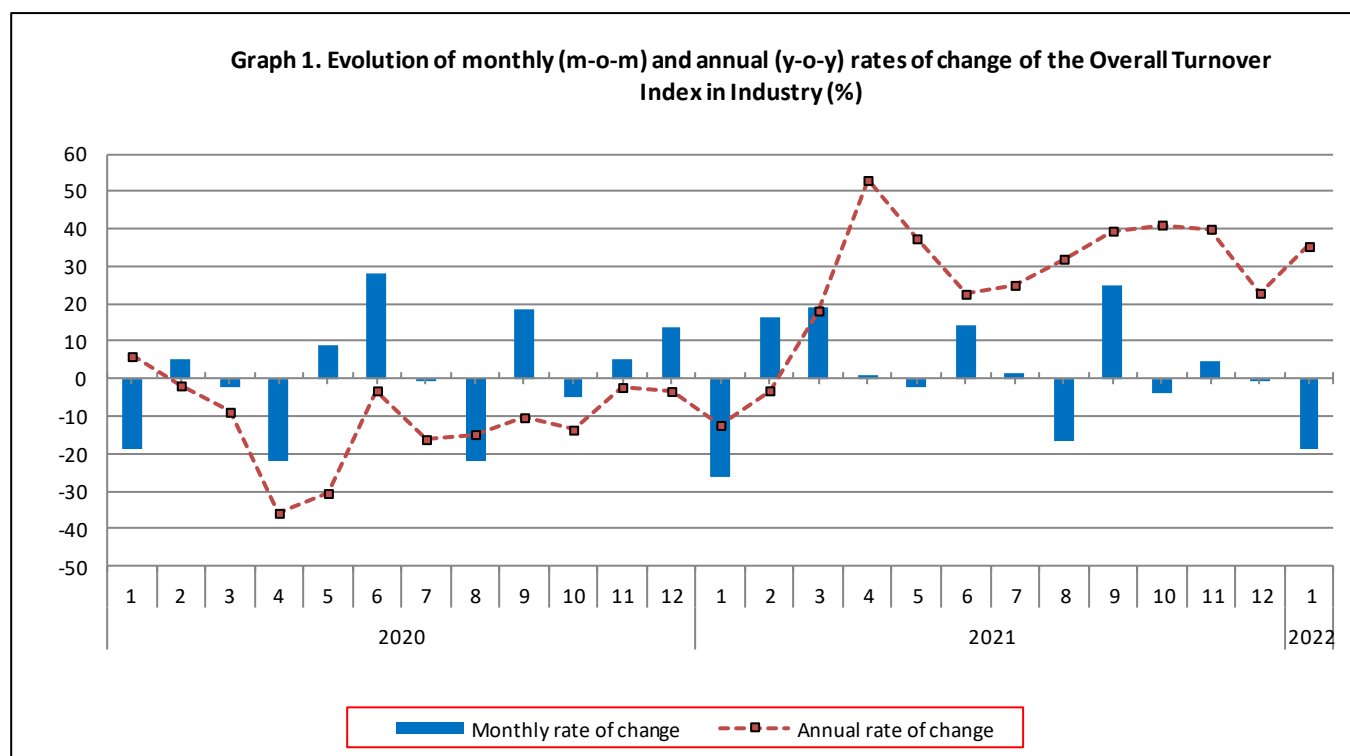
TURNOVER INDEX IN INDUSTRY: January 2022, y-o-y increase of 35.4%

The Hellenic Statistical Authority announces the Turnover Index in Industry with base year 2015=100.0 for January 2022, the evolution of which on the basis of provisional data, is as follows:

The Overall Turnover Index in Industry (both Domestic and Non-Domestic Market) in January 2022 recorded an increase of 35.4% compared with the corresponding index of January 2021. The Overall Turnover Index in Industry in January 2021 decreased by 12.3% compared with the corresponding index in January 2020 (Table 1).

The Overall Turnover Index in Industry in January 2022, compared with December 2021, recorded a decrease of 18.6% (Table 6).

The average Overall Turnover Index in Industry for the 12-month period from February 2021 to January 2022 increased by 29.5%, compared with the corresponding index of the 12-month period from February 2020 to January 2021. The average Overall Turnover Index in Industry for the 12-month period from February 2020 to January 2021 decreased by 13.1% compared with the corresponding index of the 12-month period from February 2019 to January 2020 (Table 13).



Information for methodological issues:

Division of Business Statistics
Section of Manufacture-Construction Indices and Industrial Products
Head of the Section : Diamantaki Aikaterini
Tel: +30 213 135 2056
E-mail: a.diamantaki@statistics.gr

Information for data provision:

Tel: +30 213 135 2022, 2308, 2310
E-mail: data.dissem@statistics.gr

Evolution of the Overall Turnover Index in Industry in January 2022

I. Annual changes of the Overall Turnover Index in Industry: January 2022/ January 2021

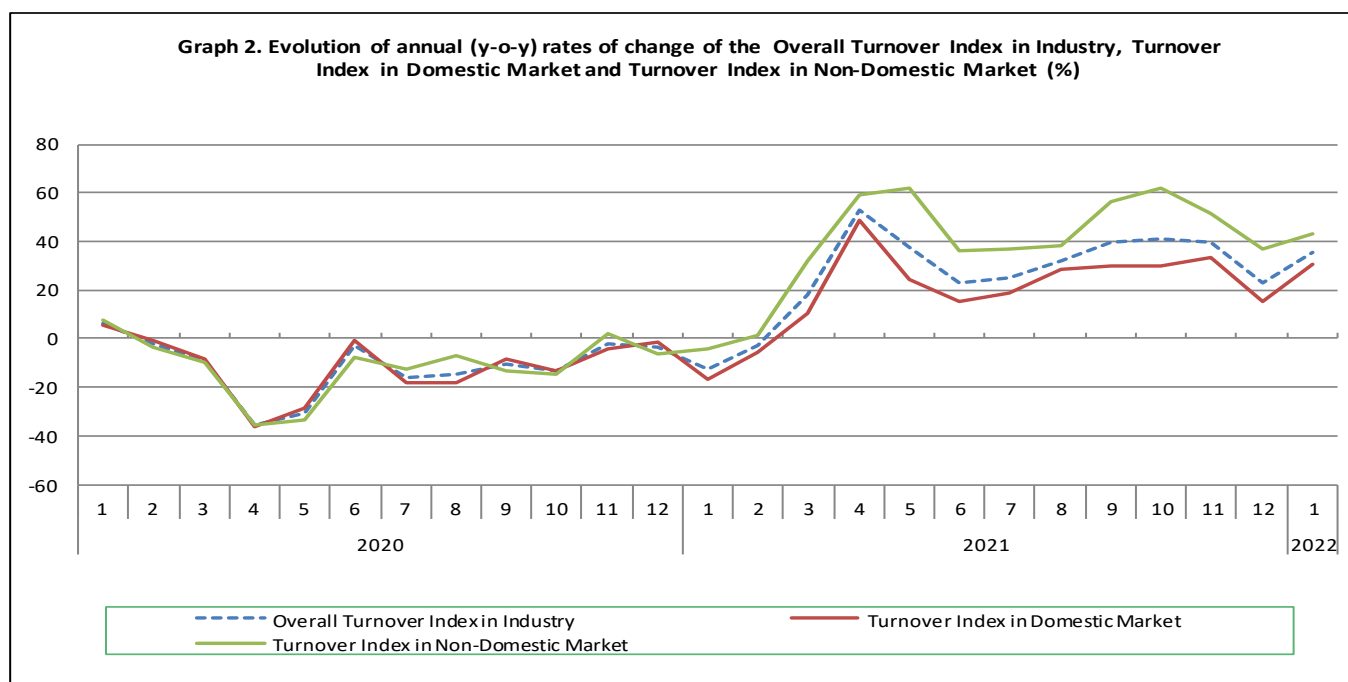
The 35.4% increase in the Overall Turnover Index in Industry in January 2022, compared with the corresponding index in January 2021, was due to the following:

1. Changes in the sub-indices of the industrial sections (Table 1):

- The Turnover Index in Manufacturing increased by 36.0%. The increase was mainly the result of the annual changes of the sub-indices in the following 2-digit divisions: coke and refined petroleum products, basic metals, chemicals and chemical products, food.
- The Turnover Index in Mining and quarrying decreased by 12.6%. The decrease was the result of the annual changes of the sub-indices in the following 2-digit divisions: mining of coal and lignite - extraction of crude petroleum and natural gas - mining support service activities, mining of metal ores.

2. Changes in the sub-indices in Domestic and Non-Domestic Markets:

- The Turnover Index in Industry in Non-Domestic Market increased by 43.5% (Table 3).
- The Turnover Index in Industry in Domestic Market increased by 30.3% (Table 2).



II. Annual changes of the Turnover Index in Industry in Domestic Market: January 2022/ January 2021

The 30.3% increase of the Turnover Index in Industry in Domestic Market in January 2022, compared with January 2021, is due to the annual changes in the sub-indices of the following industrial sections (Table 2):

- The Turnover Index in Manufacturing increased by 30.7%. The increase was mainly the result of the annual changes of the sub-indices in the following 2-digit divisions: coke and refined petroleum products, basic metals, rubber and plastic products.
- The Turnover Index in Mining and quarrying decreased by 10.8%. The decrease was mainly the result of the annual changes of the sub-indices in the following 2-digit divisions: mining of coal and lignite - extraction of crude petroleum and natural gas - mining support service activities, mining of metal ores.

III. Annual changes of the Turnover Index in Industry in Non-Domestic Market: January 2022/ January 2021

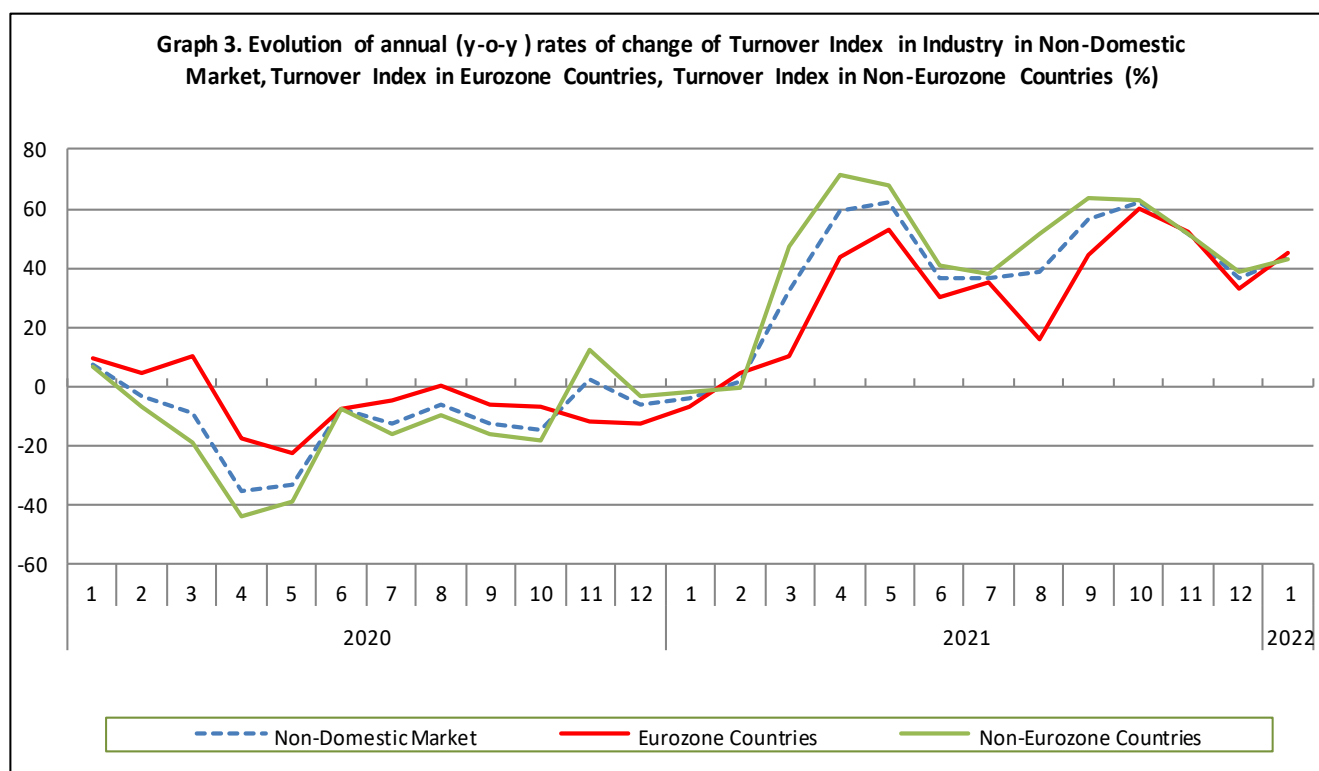
The 43.5% increase of the Turnover Index in Industry in Non-Domestic Market in January 2022, compared with January 2021, was due to the following:

1. Changes in the sub-indices of the industrial sections (Table 3):

- The Turnover Index in Manufacturing increased by 44.7%. The increase was mainly the result of the annual changes of the sub-indices in the following 2-digit divisions: coke and refined petroleum products, chemicals and chemical products, food, basic metals.
- The Turnover Index in Mining and quarrying decreased by 13.6%. The decrease was the result of the annual change of the sub-index in the following 2-digit division: mining of metal ores.

2. Changes in the sub-indices in Eurozone and Non-Eurozone countries:

- The Turnover Index in Industry in Eurozone countries increased by 44.8% (Table 4).
- The Turnover Index in Industry in Non-Eurozone countries increased by 42.7% (Table 5).



IV. Monthly changes of the Overall Turnover Index in Industry: January 2022/ December 2021

The 18.6% decrease of the Overall Turnover Index in Industry in January 2022, compared with the corresponding index in December 2021, was due to the following:

1. Changes in the sub-indices of industrial sections (Table 6):

- The Turnover Index in Mining and quarrying decreased by 46.0%.
- The Turnover Index in Manufacturing decreased by 18.3%.

2. Changes in the sub-indices in Domestic and Non-Domestic Market:

- The Turnover Index in Industry in Domestic Market decreased by 21.4% (Table 7).
- The Turnover Index in Industry in Non-Domestic Market decreased by 14.2% (Table 8).

Table 1. Annual rates of change of the Turnover Index in Industry: Total Market

Base year: 2015=100.0

Code	Division	Weights	January			Rate of change (%)	
			2022*	2021*	2020	2022/2021	2021/2020
OVERALL INDEX			117.93	87.09	99.36	35.4	-12.3
B	MINING AND QUARRYING	100.00	74.03	84.69	69.63	-12.6	21.6
05-06-09	Mining of coal and lignite - Extraction of crude petroleum and natural gas - Mining support service activities	21.19	6.48	12.12	20.32	-46.5	-40.4
07	Mining of metal ores	17.56	94.04	196.21	106.56	-52.1	84.1
08	Other mining and quarrying products	61.25	91.67	77.82	76.10	17.8	2.3
C	MANUFACTURING	100.00	118.52	87.13	99.76	36.0	-12.7
10	Food	23.39	111.26	96.72	99.96	15.0	-3.2
11	Beverages	3.57	70.57	63.31	69.13	11.5	-8.4
12	Tobacco products	1.19	130.39	141.67	116.80	-8.0	21.3
13	Textiles	1.28	97.47	92.77	87.48	5.1	6.0
14	Wearing apparel	1.80	71.79	62.53	85.38	14.8	-26.8
15	Leather and related products	0.34	38.75	27.66	59.28	40.1	-53.3
16	Wood and products of wood and cork, except furniture	0.72	91.61	76.04	90.52	20.5	-16.0
17	Paper and paper products	2.44	116.29	104.59	116.12	11.2	-9.9
18	Printing and reproduction of recorded products	1.17	76.97	75.63	85.88	1.8	-11.9
19	Coke and refined petroleum products	28.73	125.09	60.83	104.78	105.6	-41.9
20	Chemicals and chemical products	4.43	133.17	104.15	95.50	27.9	9.1
21	Basic pharmaceutical products and pharmaceutical preparations	3.67	179.68	141.73	126.68	26.8	11.9
22	Rubber and plastic products	3.47	116.70	96.98	92.81	20.3	4.5
23	Other non-metallic mineral products	3.31	93.79	79.76	84.86	17.6	-6.0
24	Basic metals	7.19	181.56	132.82	122.71	36.7	8.2
25	Fabricated metal products, except machinery and equipment	4.51	88.96	79.60	78.39	11.8	1.5
26	Computers, electronic and optical products	0.78	132.97	146.56	138.15	-9.3	6.1
27	Electrical equipment	2.65	147.82	112.84	105.66	31.0	6.8
28	Machinery and equipment n.e.c.	1.56	77.73	76.83	79.88	1.2	-3.8
29	Motor vehicles, trailers and semi-trailers	0.23	72.43	50.17	50.88	44.4	-1.4
30	Other transport equipment	0.52	40.74	46.80	38.73	-12.9	20.8
31	Furniture	0.97	69.01	63.20	76.44	9.2	-17.3
32	Other manufacturing	0.66	81.68	75.68	83.03	7.9	-8.8
33	Repair and installation of machinery and equipment	1.42	67.24	65.19	75.12	3.1	-13.2
MAIN INDUSTRIAL GROUPINGS							
1	Energy	28.57	124.18	60.48	104.17	105.3	-41.9
2	Intermediate goods	28.29	133.11	105.51	101.30	26.2	4.2
3	Capital goods	7.00	80.59	77.65	79.53	3.8	-2.4
4	Consumer Durables	1.86	76.52	67.56	78.19	13.3	-13.6
5	Consumer Non-Durables	34.28	110.07	97.07	98.94	13.4	-1.9

* Provisional data

Note: The indices and the percentage changes are rounded up to two and one decimal digits, respectively, when published.

Table 2. Annual rates of change of the Turnover Index in Industry: Domestic Market

Base year: 2015=100.0

Code		Division	Weights	January			Rate of change (%)	
				2022*	2021*	2020	2022/2021	2021/2020
OVERALL INDEX				105.23	80.73	96.99	30.3	-16.8
B	MINING AND QUARRYING		100.00	49.30	55.30	59.37	-10.8	-6.9
05-06-09	Mining of coal and lignite - Extraction of crude petroleum and natural gas - Mining support service activities		31.66	7.66	14.32	24.02	-46.5	-40.4
07	Mining of metal ores		12.83	75.67	88.55	82.02	-14.5	8.0
08	Other mining and quarrying products		55.50	66.96	70.98	74.31	-5.7	-4.5
C	MANUFACTURING		100.00	105.87	81.02	97.42	30.7	-16.8
10	Food		28.50	100.58	93.42	95.67	7.7	-2.4
11	Beverages		4.86	66.57	61.05	67.67	9.0	-9.8
12	Tobacco products		0.51	212.59	181.57	148.99	17.1	21.9
13	Textiles		1.11	77.80	64.29	69.08	21.0	-6.9
14	Wearing apparel		1.77	64.31	54.43	82.88	18.1	-34.3
15	Leather and related products		0.41	39.57	25.17	43.30	57.2	-41.9
16	Wood and products of wood and cork, except furniture		0.96	87.19	71.09	88.82	22.7	-20.0
17	Paper and paper products		3.12	114.41	101.50	115.65	12.7	-12.2
18	Printing and reproduction of recorded products		1.63	66.04	61.09	72.69	8.1	-15.9
19	Coke and refined petroleum products		24.90	110.85	47.08	111.76	135.4	-57.9
20	Chemicals and chemical products		4.90	125.26	106.07	92.25	18.1	15.0
21	Basic pharmaceutical products and pharmaceutical preparations		3.85	151.49	135.70	119.83	11.6	13.2
22	Rubber and plastic products		3.31	116.46	91.63	89.00	27.1	2.9
23	Other non-metallic mineral products		3.31	91.34	81.44	86.16	12.2	-5.5
24	Basic metals		3.49	201.14	148.54	129.39	35.4	14.8
25	Fabricated metal products, except machinery and equipment		4.25	92.85	87.31	78.92	6.4	10.6
26	Computers, electronic and optical products		0.40	60.93	89.81	85.70	-32.2	4.8
27	Electrical equipment		2.24	139.11	111.40	106.94	24.9	4.2
28	Machinery and equipment n.e.c.		1.46	84.88	80.96	84.41	4.8	-4.1
29	Motor vehicles, trailers and semi-trailers		0.27	70.25	40.49	40.93	73.5	-1.1
30	Other transport equipment		0.58	27.96	39.70	33.41	-29.6	18.8
31	Furniture		1.35	62.99	57.47	68.10	9.6	-15.6
32	Other manufacturing		0.88	76.32	71.28	79.23	7.1	-10.0
33	Repair and installation of machinery and equipment		1.92	69.05	68.27	78.46	1.1	-13.0
MAIN INDUSTRIAL GROUPINGS								
1	Energy		24.89	109.77	46.78	110.91	134.6	-57.8
2	Intermediate goods		25.73	121.09	101.16	96.85	19.7	4.4
3	Capital goods		7.19	78.65	76.71	76.59	2.5	0.2
4	Consumer Durables		2.31	71.51	60.60	72.66	18.0	-16.6
5	Consumer Non-Durables		39.88	98.90	90.63	93.47	9.1	-3.0

* Provisional data

Note: The indices and the percentage changes are rounded up to two and one decimal digits, respectively, when published.

Table 3. Annual rates of change of the Turnover Index in Industry: Non-Domestic Market

Base year: 2015=100.0

Code	Division	Weights	January			Rate of change (%)	
			2022*	2021*	2020	2022/2021	2021/2020
OVERALL INDEX			142.96	99.64	104.03	43.5	-4.2
B	MINING AND QUARRYING	100.00	106.31	123.04	83.01	-13.6	48.2
05-06-09	Mining of coal and lignite - Extraction of crude petroleum and natural gas - Mining support service activities	7.53	0.00	0.00	0.00	-	-
07	Mining of metal ores	23.74	107.00	272.18	123.87	-60.7	119.7
08	Other mining and quarrying products	68.74	117.71	85.02	77.98	38.5	9.0
C	MANUFACTURING	100.00	143.60	99.23	104.39	44.7	-5.0
10	Food	13.27	156.72	110.76	118.21	41.5	-6.3
11	Beverages	1.01	108.67	84.82	83.08	28.1	2.1
12	Tobacco products	2.53	97.24	125.58	103.83	-22.6	21.0
13	Textiles	1.61	124.46	131.86	112.73	-5.6	17.0
14	Wearing apparel	1.86	85.87	77.80	90.10	10.4	-13.7
15	Leather and related products	0.19	35.25	38.36	127.96	-8.1	-70.0
16	Wood and products of wood and cork, except furniture	0.24	126.70	115.31	104.07	9.9	10.8
17	Paper and paper products	1.11	126.78	121.79	118.72	4.1	2.6
18	Printing and reproduction of recorded products	0.26	212.98	256.71	250.27	-17.0	2.6
19	Coke and refined petroleum products	36.32	144.42	79.50	95.30	81.7	-16.6
20	Chemicals and chemical products	3.50	155.07	98.84	104.50	56.9	-5.4
21	Basic pharmaceutical products and pharmaceutical preparations	3.30	244.81	155.65	142.49	57.3	9.2
22	Rubber and plastic products	3.79	117.13	106.27	99.41	10.2	6.9
23	Other non-metallic mineral products	3.31	98.65	76.41	82.28	29.1	-7.1
24	Basic metals	14.54	172.25	125.35	119.54	37.4	4.9
25	Fabricated metal products, except machinery and equipment	5.03	82.42	66.68	77.50	23.6	-14.0
26	Computers, electronic and optical products	1.52	170.45	176.09	165.44	-3.2	6.4
27	Electrical equipment	3.44	159.08	114.71	104.02	38.7	10.3
28	Machinery and equipment n.e.c.	1.76	66.00	70.05	72.44	-5.8	-3.3
29	Motor vehicles, trailers and semi-trailers	0.14	80.95	87.88	89.60	-7.9	-1.9
30	Other transport equipment	0.40	77.17	67.03	53.87	15.1	24.4
31	Furniture	0.21	145.75	136.27	182.69	7.0	-25.4
32	Other manufacturing	0.22	123.22	109.78	112.42	12.2	-2.3
33	Repair and installation of machinery and equipment	0.43	51.32	38.11	45.78	34.7	-16.7
MAIN INDUSTRIAL GROUPINGS							
1	Energy	35.82	143.90	79.22	94.96	81.7	-16.6
2	Intermediate goods	33.33	151.39	112.14	108.07	35.0	3.8
3	Capital goods	6.62	84.75	79.65	85.82	6.4	-7.2
4	Consumer Durables	0.98	99.85	99.95	103.91	-0.1	-3.8
5	Consumer Non-Durables	23.25	147.82	118.86	117.40	24.4	1.2

* Provisional data

Note: The indices and the percentage changes are rounded up to two and one decimal digits, respectively, when published.

Table 4. Annual rates of change of the Turnover Index in Industry: Eurozone Countries

Base year: 2015=100.0

CodeSections and main groupings		January			Rate of change (%)	
		2022*	2021*	2020	2022/2021	2021/2020
OVERALL INDEX		157.07	108.49	116.84	44.8	-7.1
INDUSTRIAL SECTIONS						
B	MINING AND QUARRYING	139.79	140.61	62.77	-0.6	124.0
C	MANUFACTURING	157.42	107.85	117.93	46.0	-8.5
MAIN INDUSTRIAL GROUPINGS						
1	Energy	117.82	54.33	87.28	116.9	-37.8
2	Intermediate goods	173.92	124.31	131.36	39.9	-5.4
3	Capital goods	96.89	108.69	115.89	-10.9	-6.2
4	Consumer Durables	175.70	131.48	193.16	33.6	-31.9
5	Consumer Non-Durables	173.31	127.36	118.33	36.1	7.6

* Provisional data

Table 5. Annual rates of change of the Turnover Index in Industry: Non-Eurozone Countries

Base year: 2015=100.0

CodeSections and main groupings		January			Rate of change (%)	
		2022*	2021*	2020	2022/2021	2021/2020
OVERALL INDEX		135.46	94.93	97.21	42.7	-2.3
INDUSTRIAL SECTIONS						
B	MINING AND QUARRYING	84.33	111.51	96.29	-24.4	15.8
C	MANUFACTURING	136.29	94.66	97.23	44.0	-2.6
MAIN INDUSTRIAL GROUPINGS						
1	Energy	151.41	86.39	97.17	75.3	-11.1
2	Intermediate goods	136.71	104.20	92.89	31.2	12.2
3	Capital goods	80.63	69.81	75.62	15.5	-7.7
4	Consumer Durables	47.48	78.18	42.28	-39.3	84.9
5	Consumer Non-Durables	123.01	110.59	116.49	11.2	-5.1

* Provisional data

Note: The indices and the percentage changes are rounded up to two and one decimal digits, respectively, when published.

Table 6. Monthly rate of change of the Turnover Index in Industry: Total Market

Base year: 2015=100.0

Code	Sections and main groupings	January 2022*	December 2021**	Rate of change (%) Jan. 2022/ Dec. 2021
OVERALL INDEX		117.93	144.95	-18.6
INDUSTRIAL SECTIONS				
B	MINING AND QUARRYING	74.03	137.22	-46.0
C	MANUFACTURING	118.52	145.05	-18.3
MAIN INDUSTRIAL GROUPINGS				
1	Energy	124.18	158.01	-21.4
2	Intermediate goods	133.11	153.81	-13.5
3	Capital goods	80.59	180.15	-55.3
4	Consumer Durables	76.52	142.52	-46.3
5	Consumer Non-Durables	110.07	119.68	-8.0

Table 7. Monthly rate of change of the Turnover Index in Industry: Domestic Market

Base year: 2015=100.0

Code	Sections and main groupings	January 2022*	December 2021**	Rate of change (%) Jan. 2022/ Dec. 2021
OVERALL INDEX		105.23	133.91	-21.4
INDUSTRIAL SECTIONS				
B	MINING AND QUARRYING	49.30	85.39	-42.3
C	MANUFACTURING	105.87	134.47	-21.3
MAIN INDUSTRIAL GROUPINGS				
1	Energy	109.77	127.58	-14.0
2	Intermediate goods	121.09	156.01	-22.4
3	Capital goods	78.65	203.08	-61.3
4	Consumer Durables	71.51	129.85	-44.9
5	Consumer Non-Durables	98.90	111.36	-11.2

Table 8. Monthly rate of change of the Turnover Index in Industry: Non-Domestic Market

Base year: 2015=100.0

Code	Sections and main groupings	January 2022*	December 2021**	Rate of change (%) Jan. 2022/ Dec. 2021
OVERALL INDEX		142.96	166.69	-14.2
INDUSTRIAL SECTIONS				
B	MINING AND QUARRYING	106.31	204.85	-48.1
C	MANUFACTURING	143.60	166.02	-13.5
MAIN INDUSTRIAL GROUPINGS				
1	Energy	143.90	199.67	-27.9
2	Intermediate goods	151.39	150.45	0.6
3	Capital goods	84.75	131.13	-35.4
4	Consumer Durables	99.85	201.50	-50.4
5	Consumer Non-Durables	147.82	147.80	0.0

* Provisional data ** Revised data

Note: The indices and the percentage changes are rounded up to two and one decimal digits, respectively, when published.

Table 9. Monthly rate of change of the Turnover Index in Industry: Eurozone Countries

Base year: 2015=100.0

Code	Sections and main groupings	January 2022*	December 2021**	Rate of change (%) Jan. 2022/ Dec. 2021
OVERALL INDEX		157.07	143.51	9.5
INDUSTRIAL SECTIONS				
B	MINING AND QUARRYING	139.79	210.36	-33.5
C	MANUFACTURING	157.42	142.17	10.7
MAIN INDUSTRIAL GROUPINGS				
1	Energy	117.82	136.06	-13.4
2	Intermediate goods	173.92	157.45	10.5
3	Capital goods	96.89	126.32	-23.3
4	Consumer Durables	175.70	176.55	-0.5
5	Consumer Non-Durables	173.31	134.08	29.3

* Provisional data ** Revised data

Table 10. Monthly rate of change of the Turnover Index in Industry: Non-Eurozone Countries

Base year: 2015=100.0

Code	Sections and main groupings	January 2022*	December 2021**	Rate of change (%) Jan. 2022/ Dec. 2021
OVERALL INDEX		135.46	179.01	-24.3
INDUSTRIAL SECTIONS				
B	MINING AND QUARRYING	84.33	201.22	-58.1
C	MANUFACTURING	136.29	178.65	-23.7
MAIN INDUSTRIAL GROUPINGS				
1	Energy	151.41	217.99	-30.5
2	Intermediate goods	136.71	145.89	-6.3
3	Capital goods	80.63	132.75	-39.3
4	Consumer Durables	47.48	218.73	-78.3
5	Consumer Non-Durables	123.01	161.16	-23.7

* Provisional data ** Revised data

Note: The indices and the percentage changes are rounded up to two and one decimal digits, respectively, when published.

Table 11. Evolution of the Turnover Index in Industry (y-o-y changes): Total Market

Base year: 2015=100.0

Year and month	Overall Index (Total Market)		Turnover Index in Industry in Domestic Market		Turnover Index in Industry in Non-Domestic Market	
	Index	Annual rate of change (%)	Index	Annual rate of change (%)	Index	Annual rate of change (%)
2021*: 1	87.09	-12.3	80.73	-16.8	99.64	-4.2
2	101.29	-3.1	92.98	-5.6	117.67	1.1
3	120.85	18.2	107.10	10.2	147.93	31.9
4	122.10	53.0	111.47	49.1	143.06	59.5
5	119.67	37.5	106.05	24.4	146.50	61.8
6	136.73	22.7	128.04	15.5	153.86	36.5
7	138.95	25.1	128.41	18.7	159.72	36.7
8	115.62	32.0	111.61	28.7	123.52	38.4
9	144.55	39.5	131.43	30.2	170.41	56.5
10	138.86	41.1	126.02	30.1	164.15	61.8
11	145.00	40.0	132.86	33.4	168.91	51.6
12	144.95	22.9	133.91	15.6	166.69	36.4
2022*: 1	117.93	35.4	105.23	30.3	142.96	43.5

*Provisional data

Table 12. Evolution of the Turnover Index in Industry (y-o-y changes): Non-Domestic Market

Base year: 2015=100.0

Year and month	Overall Index (Non-Domestic Market)		Turnover Index in Industry in Eurozone Countries		Turnover Index in Industry in Non-Eurozone Countries	
	Index	Annual rate of change (%)	Index	Annual rate of change (%)	Index	Annual rate of change (%)
2021*: 1	99.64	-4.2	108.49	-7.1	94.93	-2.3
2	117.67	1.1	129.30	4.4	111.48	-0.8
3	147.93	31.9	147.07	10.2	148.38	47.2
4	143.06	59.5	155.79	43.4	136.29	71.1
5	146.50	61.8	161.92	52.6	138.30	68.1
6	153.86	36.5	165.12	29.7	147.88	40.8
7	159.72	36.7	164.20	35.2	157.35	37.5
8	123.52	38.4	105.99	15.6	132.84	51.1
9	170.41	56.5	162.66	44.3	174.53	63.4
10	164.15	61.8	169.93	59.8	161.08	63.0
11	168.91	51.6	171.77	51.8	167.40	51.5
12	166.69	36.4	143.51	32.9	179.01	37.9
2022*: 1	142.96	43.5	157.07	44.8	135.46	42.7

*Provisional data

Note: The indices and the percentage changes are rounded up to two and one decimal digits, respectively, when published.

Table 13. Average indices and rates of change (%) of the 12-month periods of Turnover Index in Industry: Total Market
Base year: 2015=100.0

Code		Division	Average Indices of 12-month periods			Rate of change (%)	
			Feb. 2021*- Jan. 2022*	Feb. 2020- Jan. 2021*	Feb. 2019- Jan. 2020	2022/2021	2021/2020
OVERALL INDEX			128.88	99.53	114.59	29.5	-13.1
B	MINING AND QUARRYING		103.51	99.77	108.32	3.7	-7.9
05-06-09	Mining of coal and lignite - Extraction of crude petroleum and natural gas - Mining support service activities		27.88	24.49	83.03	13.9	-70.5
	Mining of metal ores		172.00	193.76	160.10	-11.2	21.0
	Other mining and quarrying products		110.03	98.87	102.23	11.3	-3.3
C	MANUFACTURING		129.22	99.53	114.67	29.8	-13.2
10	Food		114.52	102.77	104.85	11.4	-2.0
11	Beverages		116.69	97.00	117.48	20.3	-17.4
12	Tobacco products		146.43	133.79	128.17	9.5	4.4
13	Textiles		120.68	96.96	108.68	24.5	-10.8
14	Wearing apparel		84.85	62.44	93.93	35.9	-33.5
15	Leather and related products		71.46	51.96	89.76	37.5	-42.1
16	Wood and products of wood and cork, except furniture		118.85	100.55	109.05	18.2	-7.8
17	Paper and paper products		119.70	112.79	114.87	6.1	-1.8
18	Printing and reproduction of recorded products		97.96	88.84	96.54	10.3	-8.0
19	Coke and refined petroleum products		125.18	74.84	120.81	67.3	-38.1
20	Chemicals and chemical products		142.58	120.30	117.95	18.5	2.0
21	Basic pharmaceutical products and pharmaceutical preparations		188.43	166.47	142.10	13.2	17.2
22	Rubber and plastic products		135.34	109.52	107.14	23.6	2.2
23	Other non-metallic mineral products		123.26	102.14	112.12	20.7	-8.9
24	Basic metals		168.25	122.02	125.05	37.9	-2.4
25	Fabricated metal products, except machinery and equipment		123.78	98.13	100.93	26.1	-2.8
26	Computers, electronic and optical products		191.30	159.09	163.23	20.2	-2.5
27	Electrical equipment		191.44	136.50	128.99	40.3	5.8
28	Machinery and equipment n.e.c.		124.34	105.58	109.51	17.8	-3.6
29	Motor vehicles, trailers and semi-trailers		135.90	109.90	110.46	23.7	-0.5
30	Other transport equipment		73.98	66.81	62.84	10.7	6.3
31	Furniture		124.50	103.56	115.69	20.2	-10.5
32	Other manufacturing		113.02	87.10	106.15	29.7	-17.9
33	Repair and installation of machinery and equipment		104.26	96.92	98.44	7.6	-1.5
MAIN INDUSTRIAL GROUPINGS							
1	Energy		124.48	74.49	120.62	67.1	-38.2
2	Intermediate goods		143.56	113.63	115.15	26.3	-1.3
3	Capital goods		123.72	103.52	105.90	19.5	-2.3
4	Consumer Durables		119.38	97.11	108.29	22.9	-10.3
5	Consumer Non-Durables		121.98	108.08	111.20	12.9	-2.8

*Provisional data

Note: The indices and the percentage changes are rounded up to two and one decimal digits, respectively, when published.

METHODOLOGICAL NOTES

Generally	The Industrial Turnover Index is an indicator of an enterprise's business cycle showing the monthly evolution of the market of goods and services in industry. The first compilation of the Turnover Index was completed by the Hellenic Statistical Authority in 2006, with base year 2000=100.0 and is compiled from 2000 onwards.
Purpose of the index	The purpose of this index is to measure the monthly activity of the industrial sector in terms of value. Turnover comprises the totals invoiced by the observation units during the reference period and corresponds to the market sales of goods or services supplied to third parties. The purposes and the characteristics of the Turnover Index apply, as well, to the indices for the distinction between domestic and non-domestic turnover.
Legal Framework	The compilation and publication of the Turnover Index is based on the framework of the implementation of Council Regulation (EC) No 1165/1998 concerning short-term statistics (STS-R), as well as Regulation (EC) No 1158/2005 of the European Parliament and of the Council amending Council Regulation (EC) No 1165/1998. Furthermore, this index is governed by Regulation (EC) No 1893/2006 of the European Parliament and of the Council, by Commission Regulation (EC) No 656/2007, by Regulation (EC) No 451/2008 of the Council, by Regulation (EU) No 2019/2152 of the European Parliament and of the Council on European business statistics, as well as Commission Implementing Regulation (EU) No 2020/1197 laying down technical specifications and arrangements pursuant to Regulation (EU) No 2019/2152.
Reference period	Month.
Base year	2015=100.0.
Revision	The latest revision of the Turnover Index in Industry (base year 2015=100.0) took place in the framework of Council Regulation (EC) No 1165/1998 concerning short-term statistics. In accordance with this regulation the index is revised every five years, in years ending in 0 or 5.
Statistical classifications	At the level of classes of economic activities, the statistical classification of economic activities NACE Rev. 2 of EU was used (Regulation No 1893/2006), while at the level of main industrial groupings, the allocation of two-digit and three-digit NACE Rev. 2 headings to categories of aggregate classification was used, in accordance with Commission Regulation No 656/2007.
Geographical coverage	The index covers the whole Country.
Coverage of economic activities	The Turnover Index in Industry is compiled for all activities listed in Sections B (mining and quarrying) and C (manufacturing) of the NACE Rev. 2 statistical classification.
Computation of the Index	The Turnover Index in Industry is a fixed base index. This index is calculated at a first stage at the four-digit level of economic activity and subsequently, with the implementation of appropriate weighting coefficients, the index is calculated at higher levels (three-level and two-level of economic activity) as well as at the level of Main Industrial Groupings (MIGs).
Data collection and processing in the context of the COVID-19 pandemic	The compilation of the indices was mainly based on data collected by the enterprises (via web-based application, email), as well as data from administrative sources. For January 2022 there was no significant change in the data collection compared to previous reference months.
Publication of data	The Turnover Index in Industry (2015=100.0) is released since August 2019 with June 2019 as first reference month. Data with base year 2015=100.0 are available from January 2000 onwards.
References	More information about the methodology concerning the compilation and calculation of the index and for the time series is available on the website of the Hellenic Statistical Authority (ELSTAT) (http://www.statistics.gr/en/statistics/-/publication/DKT24/-).