



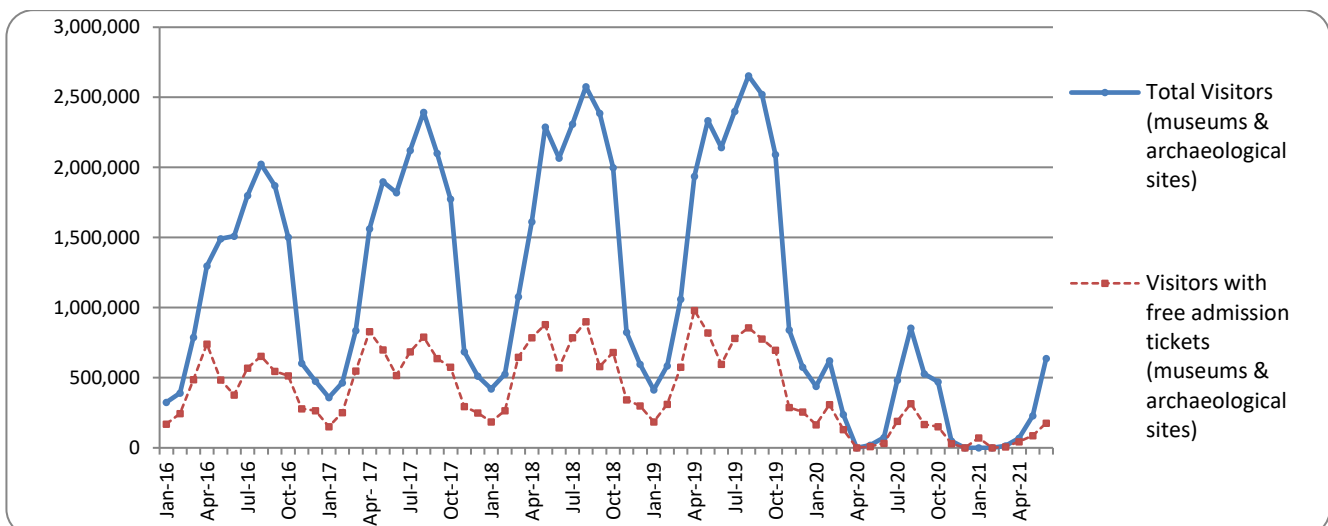
## PRESS RELEASE

### SURVEY ON MUSEUMS AND ARCHAEOLOGICAL SITES ATTENDANCE JUNE 2021

The Hellenic Statistical Authority (ELSTAT) announces the results of the *Survey on Museums and Archaeological Sites Attendance* for June 2021. More specifically:

- Museums, whose operation was suspended from March 14<sup>th</sup> until June 16<sup>th</sup> 2020, in the framework of the preventative measures against the Covid-19 pandemic, during June 2020 operated for a total period of fifteen (15) calendar days, whereas in June 2021 they operated fully. During June 2021, compared with the period of June 2020 that Museums were in operation, a 1009.8% increase is observed in the number of visitors and a 683.9% increase in the number of free admission visitors as well as a 1697.5% increase in their receipts (Table 1).
- In June 2021 compared with the corresponding month of 2020, the number of visitors at Archaeological sites recorded an increase of 701.3%, while an increase of 354.3% was observed in the number of free admission visitors and an increase of 1098.8% was observed in the corresponding receipts (Table 1).
- During the six month period from January to June 2021, compared to the corresponding period of 2020, a decrease of 52.3% was observed in the number of visitors of Museums, while a decrease of 63.4% was recorded in the number of free admission visitors and a 1.1% increase in the relevant receipts, given the suspension of operation, from March 14<sup>th</sup> until June 16<sup>th</sup> 2020 and again gradually from November 1<sup>st</sup> 2020 until May 13<sup>th</sup> 2021, in the framework of the preventative measures against the Covid-19 pandemic (Table 2).
- As regards Archaeological sites, during the six month period from January to June 2021, compared to the corresponding period of 2020, a decrease of 18.6% was recorded in the number of visitors, while a decrease of 42.4% was observed in the number of free admission visitors and an increase of 43.2% was observed in the relevant receipts, given the suspension of operation of Archaeological sites from March 14<sup>th</sup> until May 17<sup>th</sup> 2020 and from November 7<sup>th</sup> 2020 until March 21<sup>st</sup> 2021 (Table 2).

**Graph 1: Visitors of Museums and Archaeological sites (January 2016 – June 2021)**



**Information on methodological issues:**

Sectoral Statistics Division  
Tourism and Cultural Statistics Section  
Head of the Section: Asimina Katri  
Tel: +30 213 135 2168  
e-mail: [a.katri@statistics.gr](mailto:a.katri@statistics.gr)

**Information for data provision:**

Tel. +30 213 135 2022, 2308, 2310  
e-mail: [data.dissem@statistics.gr](mailto:data.dissem@statistics.gr)

**TABLE 1: VISITORS OF MUSEUMS AND ARCHAEOLOGICAL SITES - TOTAL RECEIPTS  
(JUNE 2020 & JUNE 2021)**

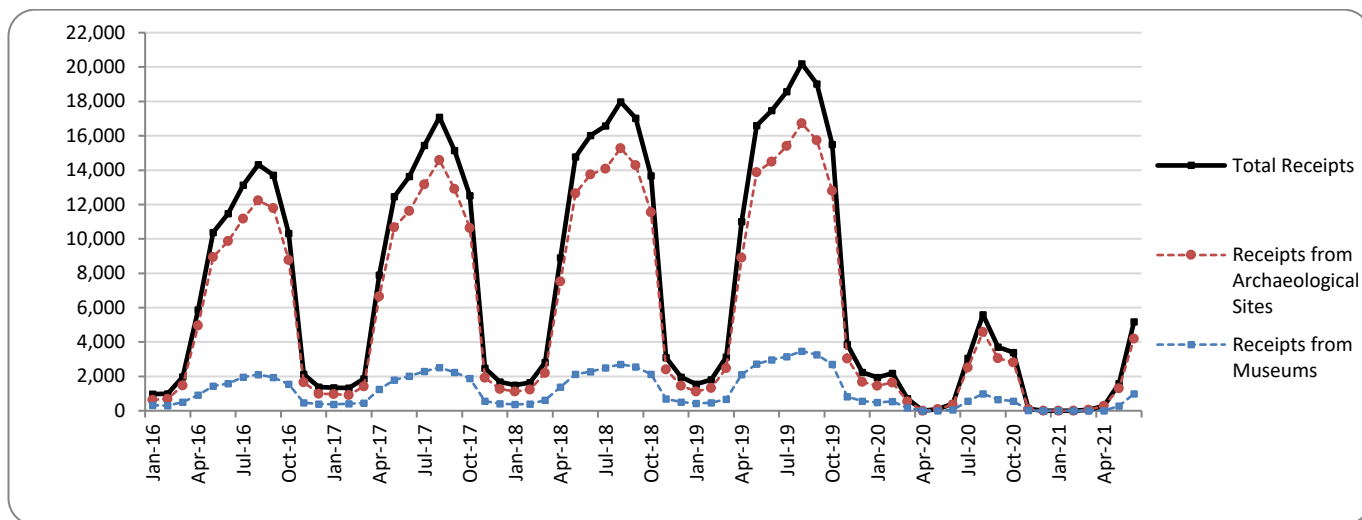
<b>I. NUMBER OF VISITORS</b>			
<b>Museums and Archaeological sites</b>	<b>2020 <sup>(2)</sup></b>	<b>2021 <sup>(2)</sup></b>	<b>Change 2021/2020</b>
<b>Total number of visitors (A+B)</b>	<b>72,954</b>	<b>637,692</b>	<b>774.1%</b>
<b>A. Museums (C+E)</b>	<b>17,222</b>	<b>191,126</b>	<b>1009.8%</b>
Acropolis Museum	4,636	50,477	988.8%
National Archaeological	820	13,932	1599.0%
Ancient Olympia	217	2,615	1105.1%
Palace of the Grand Master (Rhodes)	380	10,009	2533.9%
Herakleion Archaeological (Crete)	401	10,412	2496.5%
White Tower	1,262	6,913	447.8%
Delphi	450	4,582	918.2%
Other museums	9,056	92,186	918.0%
<b>B. Archaeological Sites (D+F)</b>	<b>55,732</b>	<b>446,566</b>	<b>701.3%</b>
Epidavros <sup>(1)</sup>	2,221	14,389	547.9%
The Acropolis of Mycenae & Atreus' Treasure	1,936	11,023	469.4%
The Acropolis of Athens	11,757	104,045	785.0%
Sounio	5,279	15,834	199.9%
The Acropolis of Lindos	326	29,303	8888.7%
Royal Tombs of Vergina	369	4,670	1165.6%
Ancient Olympia	1,474	12,012	714.9%
Knossos (Crete)	1,460	37,324	2456.4%
Phaistos (Crete)	294	3,590	1121.1%
Ancient Korinthos <sup>(1)</sup>	522	4,276	719.2%
Mystras <sup>(1)</sup>	1,075	5,916	450.3%
Delphi	1,899	11,881	525.6%
Other archaeological sites	27,120	192,303	609.1%
<b>II. VISITORS WHO PAID TICKET</b>			
	<b>2020 <sup>(2)</sup></b>	<b>2021 <sup>(2)</sup></b>	<b>Change 2021/2020</b>
<b>Total number of visitors who paid ticket (C+D)</b>	<b>40,855</b>	<b>461,489</b>	<b>1029.6%</b>
C. Museums	8,002	118,854	1385.3%
D. Archaeological sites	32,853	342,635	942.9%
<b>III. VISITORS WITH FREE ADMISSION TICKETS</b>			
	<b>2020 <sup>(2)</sup></b>	<b>2021 <sup>(2)</sup></b>	<b>Change 2021/2020</b>
<b>Total number of visitors with free admission ticket (E+F)</b>	<b>32,099</b>	<b>176,203</b>	<b>448.9%</b>
E. Museums	9,220	72,272	683.9%
F. Archaeological sites	22,879	103,931	354.3%
<b>IV. RECEIPTS (euros)</b>			
	<b>2020 <sup>(2)</sup></b>	<b>2021 <sup>(2)</sup></b>	<b>Change 2021/2020</b>
<b>Total Receipts (G+H)</b>	<b>404,340</b>	<b>5,174,438</b>	<b>1179.7%</b>
G. Museums	54,652	982,374	1697.5%
H. Archaeological sites	349,688	4,192,064	1098.8%

<sup>(1)</sup> Flat rate ticket, valid both for the museum and the archaeological site.

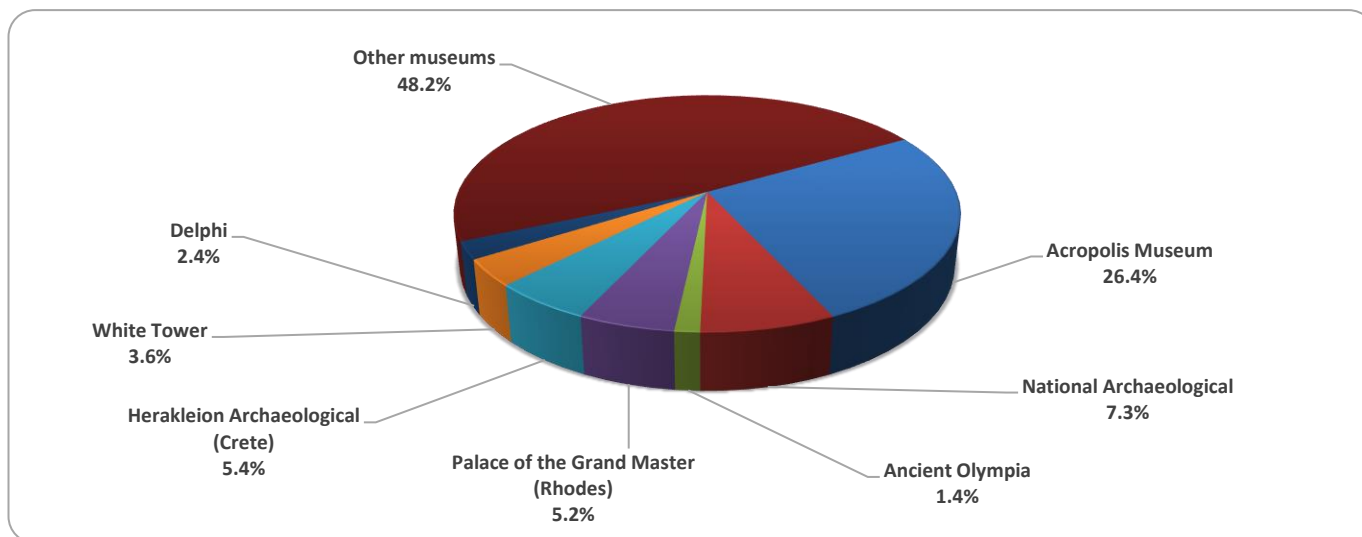
<sup>(2)</sup> The operation of Museums was suspended from March 14<sup>th</sup> until June 16<sup>th</sup> 2020 and again gradually from November 1<sup>st</sup> 2020 until May 13<sup>th</sup> 2021. The operation of Archaeological Sites was suspended March 14<sup>th</sup> until May 17<sup>th</sup> 2020 and from November 7<sup>th</sup> 2020 until March 21<sup>st</sup> 2021, in the framework of the preventative measures against the Covid-19 pandemic.

The following graphs depict the evolution of the receipts of Museums and Archaeological Sites (Graph 2), as well as the number of visitors by Archaeological Sites (Graph 3).

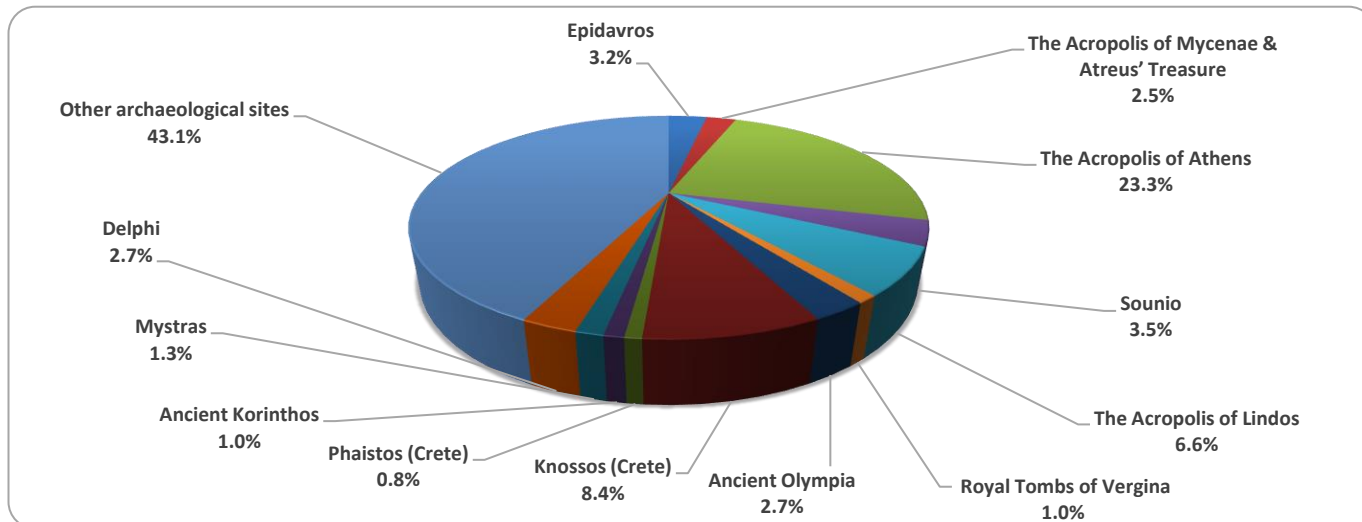
**Graph 2: Receipts from Museums and Archaeological Sites (January 2016 – June 2021)**  
(in thousand euro)



**Graph 3: Percentage distribution of visitors by Museum, June 2021**



**Graph 4: Percentage distribution of visitors by Archaeological site, June 2021**



**TABLE 2: VISITORS OF MUSEUMS AND ARCHAEOLOGICAL SITES - TOTAL RECEIPTS  
(2019, 2020, JANUARY-JUNE 2020, 2021)**

<b>I. VISITORS</b>					
Museums and Archaeological sites	2019	2020 <sup>(2)</sup>	JANUARY-JUNE		change 2021/2020
			2020 <sup>(2)</sup>	2021 <sup>(2)</sup>	
<b>Total number of visitors (A+B)</b>	<b>19,559,278</b>	<b>3,772,828</b>	<b>1,387,784</b>	<b>948,428</b>	<b>-31.7%</b>
<b>A. Museums (C+E)</b>	<b>5,895,927</b>	<b>1,100,904</b>	<b>537,527</b>	<b>256,308</b>	<b>-52.3%</b>
Acropolis Museum	1,755,435	325,969	188,347	64,463	-65.8%
National Archaeological	608,876	98,175	61,945	18,519	-70.1%
Ancient Olympia	159,348	21,956	8,346	3,556	-57.4%
Palace of the Grand Master (Rhodes)	263,958	54,572	5,019	13,187	162.7%
Herakleion Archaeological (Crete)	660,533	63,027	19,481	13,526	-30.6%
White Tower	251,760	62,007	37,384	11,102	-70.3%
Delphi	275,993	41,984	22,985	6,254	-72.8%
Other museums	1,920,024	433,214	194,020	125,701	-35.2%
<b>B. Archaeological Sites (D+F)</b>	<b>13,663,351</b>	<b>2,671,924</b>	<b>850,257</b>	<b>692,120</b>	<b>-18.6%</b>
Epidavros <sup>(1)</sup>	535,751	103,532	32,122	20,831	-35.2%
The Acropolis of Mycenae & Atreus' Treasure	502,619	78,839	31,898	16,024	-49.8%
The Acropolis of Athens	3,593,586	620,132	314,837	176,341	-44.0%
Sounio	337,544	100,319	44,229	44,086	-0.3%
The Acropolis of Lindos	525,757	156,462	2,644	36,663	1286.6%
Royal Tombs of Vergina	223,151	37,586	19,722	6,529	-66.9%
Ancient Olympia	457,710	64,759	16,806	17,996	7.1%
Knossos (Crete)	949,192	175,927	25,095	49,559	97.5%
Phaistos (Crete)	121,796	31,885	9,254	4,999	-46.0%
Ancient Korinthos <sup>(1)</sup>	214,023	31,981	14,254	6,424	-54.9%
Mystras <sup>(1)</sup>	147,713	36,352	8,739	9,114	4.3%
Delphi	405,348	75,983	34,485	17,096	-50.4%
Other archaeological sites	5,649,161	1,158,167	296,172	286,458	-3.3%
<b>II. VISITORS WHO PAID TICKET</b>					
	2019	2020 <sup>(2)</sup>	JANUARY-JUNE		change 2021/2020
			2020 <sup>(2)</sup>	2021 <sup>(2)</sup>	
<b>Total number of visitors who paid ticket (C+D)</b>	<b>12,434,987</b>	<b>2,268,397</b>	<b>739,304</b>	<b>634,052</b>	<b>-14.2%</b>
C. Museums	3,345,997	605,426	255,895	153,361	-40.1%
D. Archaeological sites	9,088,990	1,662,971	483,409	480,691	-0.6%
<b>III. VISITORS WITH FREE ADMISSION TICKETS</b>					
	2019	2020 <sup>(2)</sup>	JANUARY-JUNE		change 2021/2020
			2020 <sup>(2)</sup>	2021 <sup>(2)</sup>	
<b>Total number of visitors with free admission ticket (E+F)</b>	<b>7,124,291</b>	<b>1,504,431</b>	<b>648,480</b>	<b>314,376</b>	<b>-51.5%</b>
E. Museums	2,549,930	495,478	281,632	102,947	-63.4%
F. Archaeological sites	4,574,361	1,008,953	366,848	211,429	-42.4%
<b>IV. RECEIPTS (euros)</b>					
	2019	2020 <sup>(2)</sup>	JANUARY-JUNE		change 2021/2020
			2020 <sup>(2)</sup>	2021 <sup>(2)</sup>	
<b>Total Receipts (G+H)</b>	<b>130,938,846</b>	<b>21,176,036</b>	<b>5,321,554</b>	<b>7,094,868</b>	<b>33.3%</b>
G. Museums	23,343,026	4,047,401	1,248,215	1,261,599	1.1%
H. Archaeological sites	107,595,820	17,128,635	4,073,339	5,833,269	43.2%

<sup>(1)</sup> Flat rate ticket, valid both for the museum and the archaeological site.

<sup>(2)</sup> The operation of Museums was suspended from March 14<sup>th</sup> until June 16<sup>th</sup> 2020 and again gradually from November 1<sup>st</sup> 2020 until May 13<sup>th</sup> 2021. The operation of Archaeological Sites was suspended March 14<sup>th</sup> until May 17<sup>th</sup> 2020 and from November 7<sup>th</sup> 2020 until March 21<sup>st</sup> 2021, in the framework of the preventative measures against the Covid-19 pandemic.

## EXPLANATORY NOTES

<b>Survey on Museums and Archaeological Sites Attendance</b>	The Survey on Museums and Archaeological Sites Attendance has been producing results since 1970. The survey collects data from the Hellenic Organization of Cultural Resources Development (HOCRED), supervised by the Ministry of Culture and Sports, on the number of visitors and the receipts from the tickets sold in the Museums and Archaeological sites of the country. The corresponding data for the Acropolis Museum is available from December 2009 onwards.
<b>Legal Framework</b>	The survey is conducted since 1970 on a regular basis and it produces results on a monthly and yearly basis, in compliance with the Joint Ministerial Decision 15189/B379/73.
<b>Reference Period</b>	1/6/2021 έως 30/06/2021
<b>Methodology and Definitions</b>	The survey is conducted on a monthly basis from data mainly collected from the Hellenic Organization of Cultural Resources Development (HOCRED), supervised by the Ministry of Culture and Sports, on the number of visitors and the receipts from the tickets sold in the Museums and Archaeological sites of the Country. ELSTAT tabulates and presents the data for the whole of the Country, by month and by year.  <b>Number of flat rate tickets:</b>  From April 1999 onwards, in some museums and the nearby archaeological sites, in addition to the ordinary ticket, a new “flat rate ticket” was established, which is valid for both the museum and the nearby archaeological site. The total number of these flat rate tickets for <b>June 2021</b> was <b>35,028</b> .
<b>References</b>	More information on the Survey on Museums and Archaeological Sites Attendance and detailed time series are available on: <a href="http://www.statistics.gr/en/statistics/-/publication/SCI21/">http://www.statistics.gr/en/statistics/-/publication/SCI21/</a>