



HELLENIC REPUBLIC



HELLENIC STATISTICAL AUTHORITY

Piraeus, 15 November 2016

PRESS RELEASE

INPUT AND OUTPUT PRICE INDICES IN AGRICULTURE – LIVESTOCK: September 2016

The evolution of the Input and Output Price Indices in Agriculture - Livestock, with base year 2010=100.0 for September 2016 according to provisional data, is as follows:

The Output Price Index in Agriculture and Livestock (excluding subsidies) decreased by 1.5% in September 2016, compared with September 2015. A year ago, the index increased by 6.3% (Table 1).

The Output Price Index in September 2016 compared with August 2016 increased by 3.1%. A year ago, the index increased by 5.7% (Table 2).

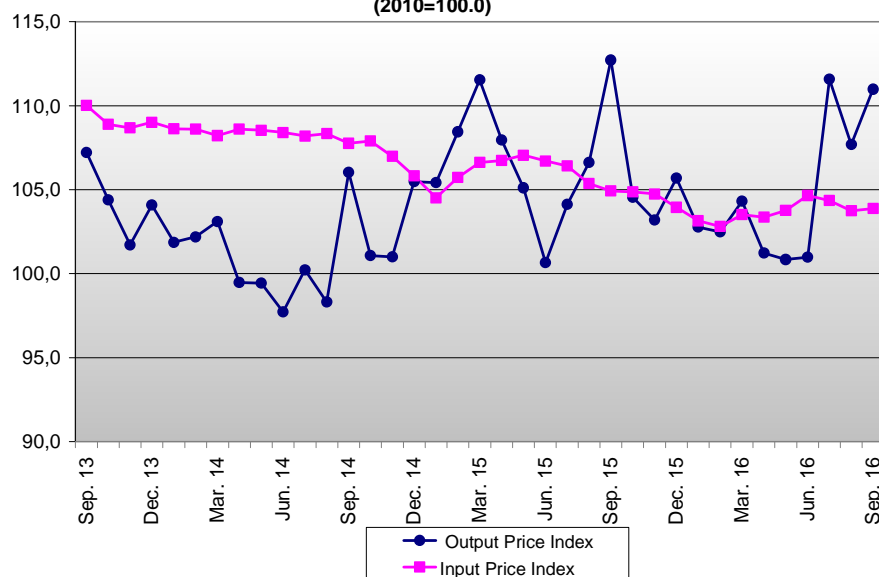
The twelve-month weighted average index from October 2015 to September 2016, compared with the same index of the period from October 2014 to September 2015, decreased by 0.8%. A year ago, the twelve-month weighted average index increased by 3.9% (Table 3).

The Input Price Index in Agriculture and Livestock decreased by 1.0% in September 2016, compared with September 2015. A year ago, the index decreased by 2.6% (Table 4).

The Input Price Index in September 2016, compared with August 2016, increased by 0.1%. A year ago, the index was also decreased by 0.4% (Table 5).

The twelve-month average index from October 2015 to September 2016, compared with the same index of the period from October 2014 to September 2015 decreased by 2.2%. A year ago, the twelve-month average index decreased by 2.1% (Table 6).

Evolution of Input and Output Price Indices in Agriculture - Livestock
(2010=100.0)



Information:

Economic and Short-Term
Indices Division

Wholesale Prices and
Price Indices Section

Maria Pontika
Tel: +30 213 1352121
Fax: +30 213 1352714

Table 1: Output Price Indices in Agricultural and Livestock Production – Annual changes

Base year: 2010=100.0

Code	Main groups	Weights	September			Change (%)	
			2016	2015	2014	2016/2015	2015/2014
140000	AGRICULTURAL GOODS OUTPUT (100000+130000). including fruits (060000) and vegetables (040000)	100.000	111.0	112.7	106.0	-1.5	6.3
141000	AGRICULTURAL GOODS OUTPUT (101000+130000). excluding fruits (060000) and vegetables (040000)	60.359	109.8	112.0	106.1	-2.0	5.6
100000	CROP OUTPUT (010000 TO 090000). including fruits (060000) and vegetables (040000)	70.812	112.4	114.0	106.0	-1.5	7.5
101000	CROP OUTPUT (010000 TO 090000). excluding fruits (060000) and vegetables (040000)	31.171	112.6	114.8	106.1	-2.0	8.2
010000	Cereals (including seeds)	9.708	111.7	113.4	108.2	-1.5	4.8
020000	Industrial Crops	5.227	90.7	84.3	84.4	7.6	-0.2
030000	Forage Plants	3.963	93.1	102.8	103.4	-9.4	-0.6
040000	Vegetables and Horticultural Products	20.594	83.3	83.7	77.9	-0.4	7.4
050000	Potatoes (including seeds)	3.442	99.3	96.2	85.2	3.2	13.0
060000	Fruits	19.047	129.7	131.5	123.0	-1.4	6.9
070000	Wine (incl. must)	415	108.4	107.5	109.2	0.8	-1.6
080000	Olive Oil	8.280	142.8	151.1	123.2	-5.5	22.6
090000	Other Crop Products	137	119.3	116.1	94.8	2.8	22.5
130000	ANIMAL OUTPUT (110000+120000)	29.188	102.5	104.5	106.0	-2.0	-1.4
110000	Animals	14.677	100.0	101.3	103.3	-1.2	-2.0
120000	Animal Products	14.511	107.7	111.5	111.7	-3.4	-0.2

Note:

1. The indices are calculated with infinite decimal figures and are rounded up to one decimal figure when published.
2. Percentage changes are calculated on the basis of the indices with infinite decimal figure and are rounded up to one decimal figure when published

Table 2: Output Price Indices in Agricultural and Livestock Production – Monthly changes

Base year: 2010=100.0

Code	Main groups	Weights	September 2016	August 2016	Change (%)	September 2015	August 2015	Change (%)
140000	AGRICULTURAL GOODS OUTPUT (100000+130000). including fruits (060000) and vegetables (040000)	100.000	111.0	107.7	3.1	112.7	106.6	5.7
141000	AGRICULTURAL GOODS OUTPUT (101000+130000). excluding fruits (060000) and vegetables (040000)	60.359	109.8	112.8	-2.7	112.0	119.5	-6.3
100000	CROP OUTPUT (010000 TO 090000). including fruits (060000) and vegetables (040000)	70.812	112.4	108.4	3.6	114.0	106.8	6.8
101000	CROP OUTPUT (010000 TO 090000). excluding fruits (060000) and vegetables (040000)	31.171	112.6	117.6	-4.3	114.8	126.8	-9.4
010000	Cereals (including seeds)	9.708	111.7	114.9	-2.8	113.4	136.8	-17.1
020000	Industrial Crops	5.227	90.7	91.6	-1.0	84.3	85.2	-1.1
030000	Forage Plants	3.963	93.1	96.8	-3.8	102.8	101.5	1.2
040000	Vegetables and Horticultural Products	20.594	83.3	84.9	-1.9	83.7	78.1	7.1
050000	Potatoes (including seeds)	3.442	99.3	97.7	1.6	96.2	100.3	-4.1
060000	Fruits	19.047	129.7	121.1	7.1	131.5	113.0	16.3
070000	Wine (incl. must)	415	108.4	108.4	0.0	107.5	107.5	0.0
080000	Olive Oil	8.280	142.8	143.0	-0.1	151.1	149.7	0.9
090000	Other Crop Products	137	119.3	122.3	-2.4	116.1	119.4	-2.8
130000	ANIMAL OUTPUT (110000+120000)	29.188	102.5	103.8	-1.3	104.5	105.8	-1.2
110000	Animals	14.677	107.7	108.7	-0.9	111.5	112.8	-1.1
120000	Animal Products	14.511	100.0	100.6	-0.5	101.3	101.2	0.1

Note:

1. The indices are calculated with infinite decimal figures and are rounded up to one decimal figure when published
2. Percentage changes are calculated on the basis of the indices with infinite decimal figure and are rounded up to one decimal figure when published.

Table 3: Output Price Index in Agricultural and Livestock Changes

Base year: 2010=100.0

Year and Month	Overall Index	Monthly Changes (%)	Annual Changes (%)	12-month moving weighted average	12- month moving weighted average changes (%)
2014:					
I	101.9	-2.1	-0.8	103.2	1.4
II	102.2	0.3	-0.5	103.2	1.3
III	103.1	0.9	0.5	103.2	1.2
IV	99.5	-3.5	-2.4	103.0	0.6
V	99.4	0.0	-2.5	102.8	0.1
VI	97.7	-1.7	-2.6	102.6	-0.6
VII	100.2	2.6	-3.2	102.3	-1.1
VIII	98.3	-1.9	-6.2	101.8	-1.9
IX	106.0	7.9	-1.1	101.7	-1.8
X	101.1	-4.7	-3.2	101.4	-2.0
XI	101.0	-0.1	-0.7	101.3	-2.1
XII	105.5	4.4	1.3	101.4	-1.8
<i>Annual Average</i>	101.4			101.4	-1.8
2015:					
I	105.4	-0.1	3.5	101.6	-1.5
II	108.4	2.9	6.1	102.1	-1.1
III	111.5	2.9	8.2	102.7	-0.5
IV	108.0	-3.2	8.5	103.4	0.4
V	105.1	-2.6	5.7	103.9	1.0
VI	100.6	-4.2	3.0	104.1	1.5
VII	104.1	3.4	3.9	104.4	2.1
VIII	106.6	2.4	8.5	105.0	3.1
IX	112.7	5.7	6.3	105.7	3.9
X	104.5	-7.3	3.4	106.1	4.7
XI	103.2	-1.3	2.2	106.3	4.9
XII	105.7	2.4	0.2	106.3	4.8
<i>Annual Average</i>	106.3			106.3	4.8
2016:					
I	102.8	-2.8	-2.5	106.1	4.4
II	102.5	-0.3	-5.5	105.7	3.6
III	104.3	1.8	-6.5	105.2	2.4
IV	101.2	-3.0	-6.2	104.6	1.1
V	100.8	-0.4	-4.1	104.3	0.4
VI	101.0	0.1	0.3	104.3	0.2
VII	111.6	10.5	7.2	104.9	0.4
VIII	107.7	-3.5	1.0	105.0	0.0
IX	111.0	3.1	-1.5	104.8	-0.8
X					
XI					
XII					
<i>Annual Average</i>					

Note:

1. The indices are calculated with infinite decimal figures and are rounded up to one decimal figure when published.
2. Percentage changes are calculated on the basis of the indices with five decimal figures and are rounded up to one decimal figure when published.

Table 4: Input Price Indices in Agricultural and Livestock Production – Annual changes**Base year: 2010=100.0**

Code	Main groups	Weights	September			Change (%)	
			2016	2015	2014	2016/2015	2015/2014
220000	Input Total	100.000	103.9	104.9	107.8	-1.0	-2.6
200000	Goods and services currently consumed in agriculture	72.986	105.0	106.5	110.3	-1.4	-3.5
201000	Seeds and planting stock	4.465	105.8	104.3	102.2	1.5	2.0
202000	Energy and lubricants	22.215	96.8	98.9	116.6	-2.2	-15.1
203000	Fertilizers and soil improvers	5.634	118.1	119.2	116.8	-0.9	2.0
204000	Plant protection products and pesticides	3.618	102.2	102.1	101.9	0.1	0.3
205000	Veterinary expenses	1.488	104.8	104.9	104.8	-0.1	0.1
206000	Animal feedingstuffs	28.083	108.3	110.7	108.0	-2.1	2.4
207000	Maintenance of materials	2.778	107.9	106.4	106.6	1.4	-0.2
208000	Maintenance of buildings	261	98.2	98.7	100.5	-0.5	-1.8
209000	Other goods and services	4.444	108.5	108.7	104.7	-0.2	3.9
210000	Goods and services contributing to agricultural investment	27.014	100.8	100.8	100.9	0.1	-0.2
211000	Materials	21.685	103.1	102.6	102.2	0.5	0.4
211110	Rotovators and other 2 wheel equipment	1.483	97.2	98.6	98.6	-1.4	0.0
211120	Machinery and plant for cultivation	2.155	109.6	108.4	105.4	1.1	2.8
211130	Machinery and plant for harvesting	2.080	103.9	103.2	102.5	0.6	0.7
211140	Farm machinery and installations	4.214	103.3	103.1	102.3	0.2	0.8
211210	Tractors	613	104.0	104.1	103.1	-0.1	0.9
211290	Other vehicles	11.140	102.3	101.6	101.8	0.7	-0.2
212000	Buildings	5.329	91.7	93.2	95.8	-1.6	-2.7

Note:

1. The indices are calculated with infinite decimal figures and are rounded up to one decimal figure when published.
2. Percentage changes are calculated on the basis of the indices with five decimal figures and are rounded up to one decimal figure when published.

Table 5: Input Price Indices in Agricultural and Livestock Production – Monthly changes

Base year: 2010=100.0

Code	Main groups	Weights	September 2016	August 2016	Change (%)	September 2015	August 2015	Change (%)
220000	Input Total	100.000	103.9	103.7	0.1	104.9	105.4	-0.4
200000	Goods and services currently consumed in agriculture	72.986	105.0	104.8	0.2	106.5	107.1	-0.6
201000	Seeds and planting stock	4.465	105.8	105.6	0.2	104.3	103.8	0.4
202000	Energy and lubricants	22.215	96.8	95.2	1.6	98.9	101.5	-2.6
203000	Fertilizers and soil improvers	5.634	118.1	118.9	-0.7	119.2	119.2	0.0
204000	Plant protection products and pesticides	3.618	102.2	102.4	-0.2	102.1	102.1	0.0
205000	Veterinary expenses	1.488	104.8	105.0	-0.2	104.9	104.9	0.0
206000	Animal feedingstuffs	28.083	108.3	108.9	-0.6	110.7	110.2	0.4
207000	Maintenance of materials	2.778	107.9	107.9	0.0	106.4	106.3	0.1
208000	Maintenance of buildings	261	98.2	98.2	-0.1	98.7	98.7	0.0
209000	Other goods and services	4.444	108.5	108.5	0.0	108.7	108.6	0.1
210000	Goods and services contributing to agricultural investment	27.014	100.8	100.9	0.0	100.8	100.8	0.0
211000	Materials	21.685	103.1	103.1	0.0	102.6	102.6	0.0
211110	Rotovators and other 2 wheel equipment	1.483	97.2	97.2	0.0	98.6	98.8	-0.2
211120	Machinery and plant for cultivation	2.155	109.6	109.6	0.0	108.4	108.1	0.2
211130	Machinery and plant for harvesting	2.080	103.9	103.7	0.1	103.2	103.2	0.0
211140	Farm machinery and installations	4.214	103.3	103.2	0.1	103.1	103.2	-0.1
211210	Tractors	613	104.0	103.9	0.1	104.1	104.1	0.0
211290	Other vehicles	11.140	102.3	102.4	-0.1	101.6	101.6	0.1
212000	Buildings	5.329	91.7	91.8	-0.1	93.2	93.3	-0.1

Note:

1. The indices are calculated with infinite decimal figures and are rounded up to one decimal figure when published.
2. Percentage changes are calculated on the basis of the indices with five decimal figures and are rounded up to one decimal figure when published.

Table 6: Input Price Index in Agricultural and Livestock Changes

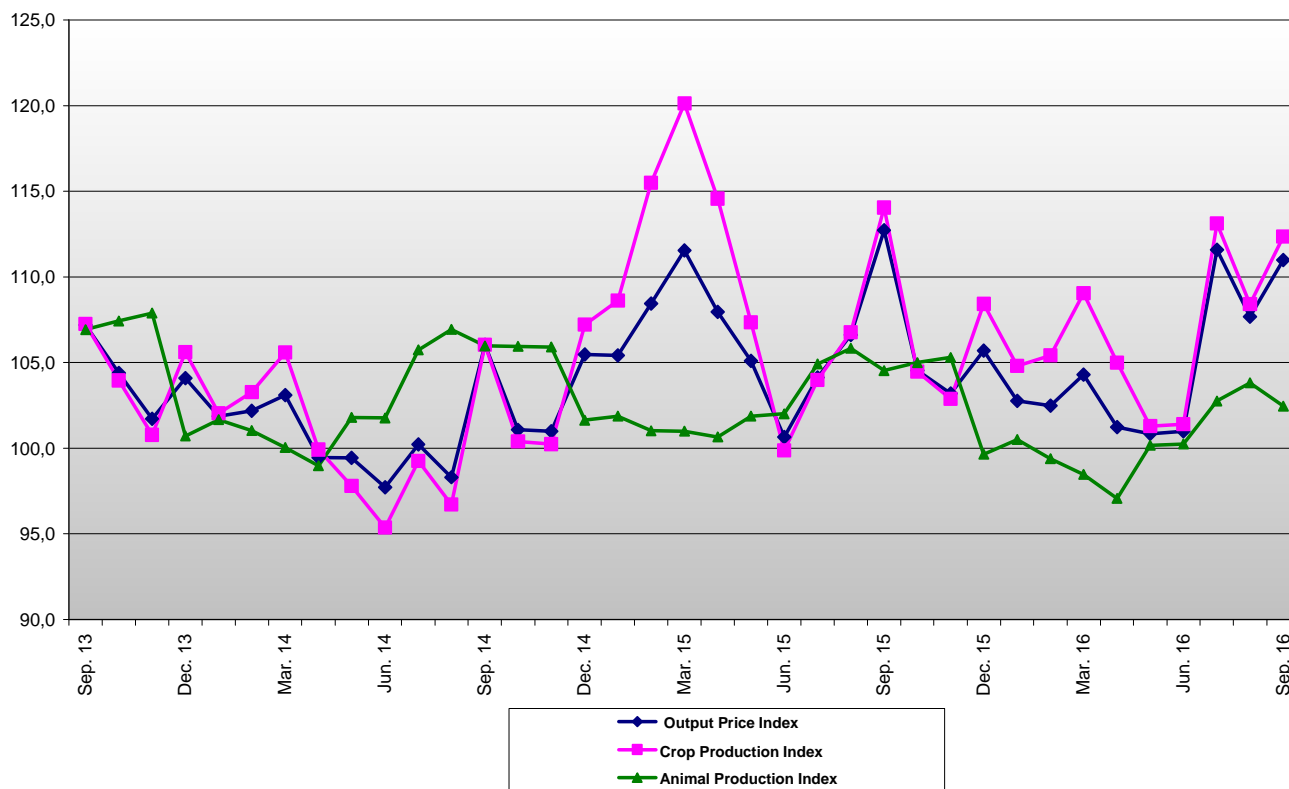
Base year: 2010=100.0

Year and Month	Overall Index	Monthly Changes (%)	Annual Changes (%)	12-month moving average	12- month moving average changes (%)
2014:					
I	108.6	-0.4	-2.7	110.5	-0.9
II	108.6	0.0	-3.4	110.2	-1.3
III	108.2	-0.3	-3.5	109.9	-1.6
IV	108.6	0.4	-2.5	109.7	-1.8
V	108.6	0.0	-2.5	109.4	-2.0
VI	108.4	-0.2	-2.5	109.2	-2.3
VII	108.2	-0.2	-3.0	108.9	-2.6
VIII	108.3	0.1	-2.5	108.7	-2.7
IX	107.8	-0.5	-2.0	108.5	-2.6
X	107.9	0.1	-0.9	108.4	-2.5
XI	107.0	-0.8	-1.5	108.3	-2.4
XII	105.8	-1.1	-2.9	108.0	-2.5
<i>Annual Average</i>	108.0			108.0	-2.5
2015:					
I	104.5	-1.2	-3.8	107.7	-2.6
II	105.7	1.2	-2.6	107.4	-2.5
III	106.6	0.8	-1.5	107.3	-2.4
IV	106.7	0.1	-1.7	107.1	-2.3
V	107.1	0.3	-1.4	107.0	-2.2
VI	106.7	-0.3	-1.6	106.9	-2.1
VII	106.4	-0.3	-1.6	106.7	-2.0
VIII	105.4	-1.0	-2.7	106.5	-2.0
IX	104.9	-0.4	-2.6	106.2	-2.1
X	104.9	0.0	-2.8	106.0	-2.2
XI	104.8	-0.1	-2.1	105.8	-2.3
XII	104.0	-0.8	-1.7	105.6	-2.2
<i>Annual Average</i>	105.6			105.6	-2.2
2016:					
I	103.2	-0.8	-1.3	105.5	-2.0
II	102.9	-0.3	-2.7	105.3	-2.0
III	103.5	0.7	-2.9	105.0	-2.1
IV	103.4	-0.2	-3.2	104.7	-2.2
V	103.8	0.4	-3.1	104.5	-2.4
VI	104.7	0.9	-1.9	104.3	-2.4
VII	104.4	-0.3	-1.9	104.1	-2.4
VIII	103.7	-0.6	-1.5	104.0	-2.3
IX	103.9	0.1	-1.0	103.9	-2.2
X					
XI					
XII					
<i>Annual Average</i>					

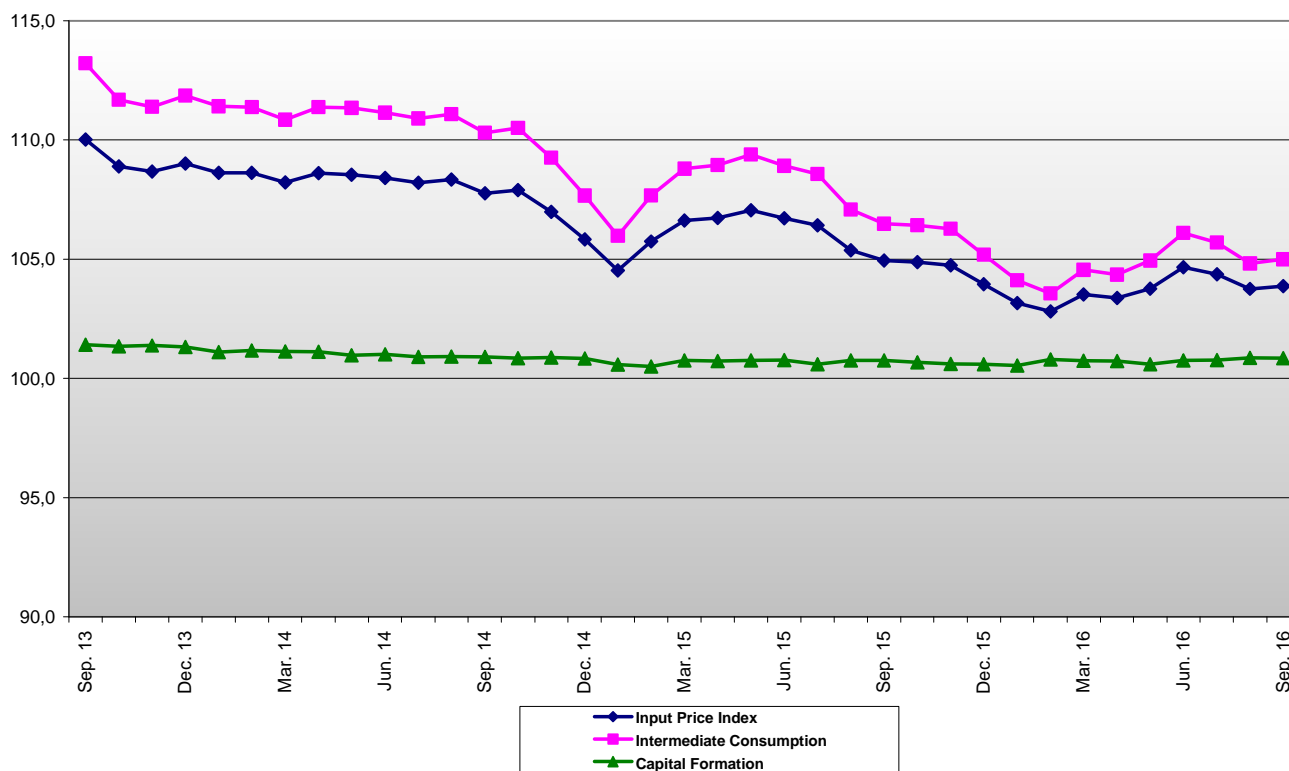
Note:

1. The indices are calculated with infinite decimal figures and are rounded up to one decimal figure when published.
2. Percentage changes are calculated on the basis of the indices with five decimal figures and are rounded up to one decimal figure when published.

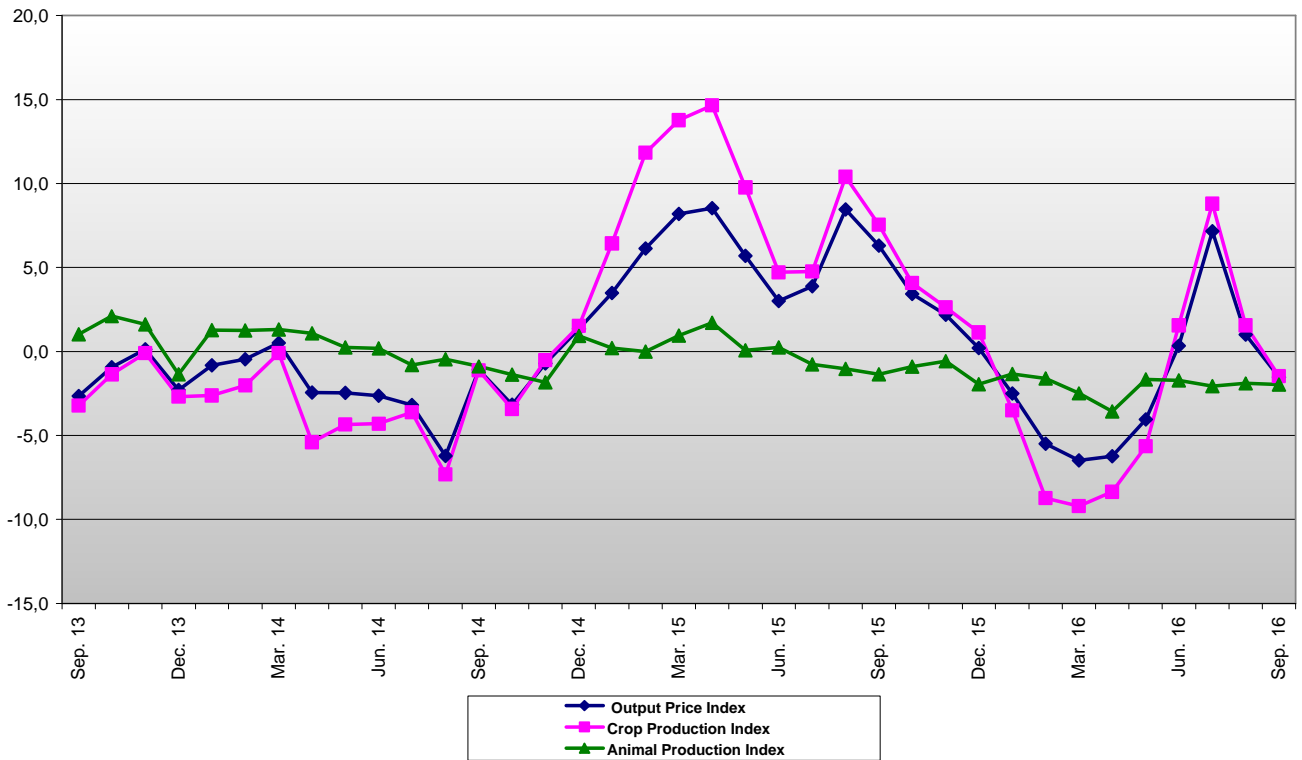
Graph 1: Evolution of the Output Price Index in Agriculture – Livestock and of the groups of Crop and Animal Production (2010=100.0)



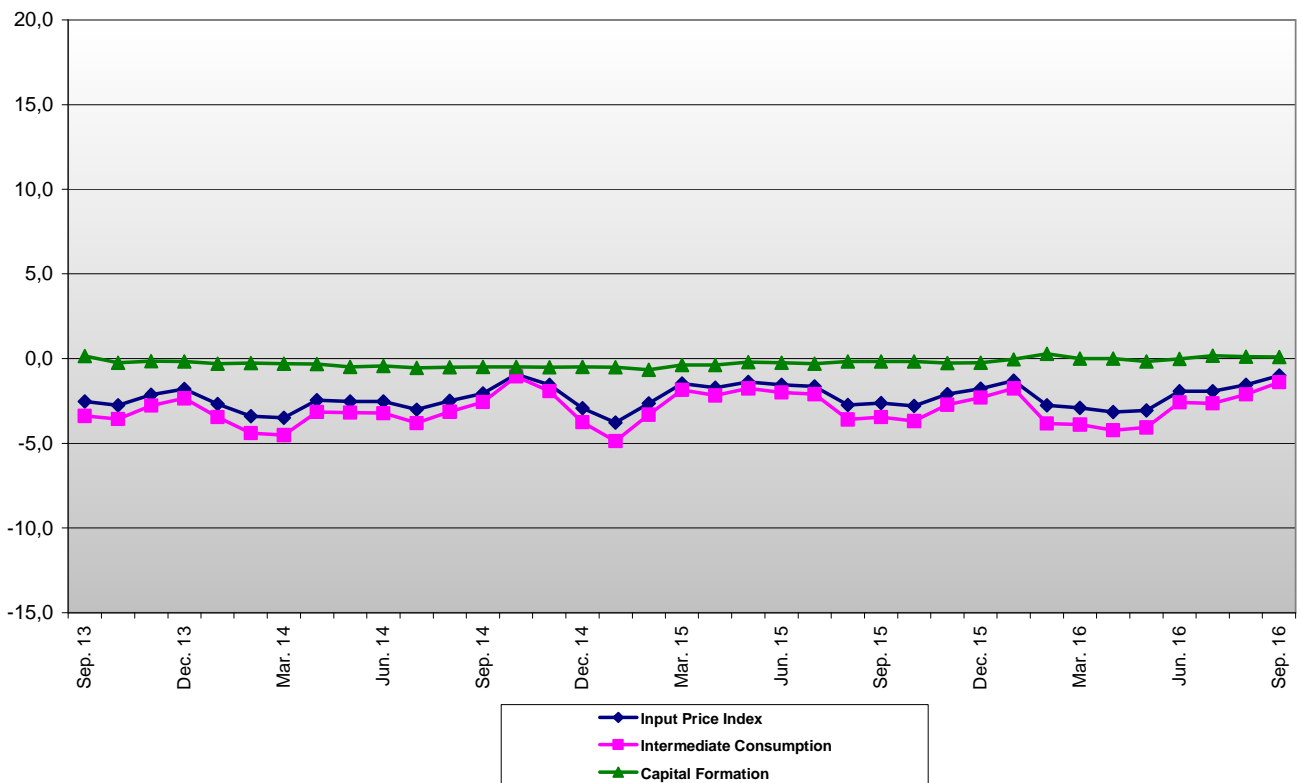
Graph 2: Evolution of the Input Price Index in Agriculture – Livestock and of the groups of Intermediate Consumption and Capital Formation (2010=100.0)



Graph 3: Annual changes of the Output Price Index in Agriculture – Livestock and of the Indices of Crop and Animal Production (2010=100.0)



Graph 4: Annual changes of the Input Price Index in Agriculture – Livestock and of the Indices of Intermediate Consumption and Capital Formation (2010=100.0)



METHODOLOGICAL NOTES

Generally	The compilation of the Input and Output Price Indices in agriculture and livestock started in 1967 with base year 1966=100.0. These indices are being released with their current form since April 2013, when they replaced the previous indices with base year 2005=100.0.
Purpose of the indices– definitions	<p>The purpose of the Output Price Index is to measure the relative change of prices that the producers receive in the agricultural – livestock sector of the sale of their products. The purpose of the Input Price Index is to measure the change in the prices paid by producers for the purchase of the means, goods and services, they use in the production process.</p> <p>The Output Price Index is divided into the crop and the animal output index. The Input Price Index is compiled from the aggregation of the price indices of the intermediate means and the fixed capital formation goods.</p> <p>As regards the Output Price Index, the prices collected are the market prices of the products. The market price is defined as the price received by the producer without subsidies, transport expenses and excluding VAT or other taxes or levies.</p> <p>As regards the Input Price Index, the collected prices refer to the prices paid for by the producers to buy the goods and services they need for their agricultural and livestock production, excluding VAT and transport expenses.</p>
Legal basis	The compilation of the Input and Output Price Indices in agriculture and livestock sector is based on voluntary agreements between Eurostat and the Member States. The foundations for these agreements were laid in the early seventies.
Reference period	Month
Base year	2010=100.0.
Revision	Input and Output price indices are fixed base year indices. The most recent revision is with base year 2010=100.0, with April 2013 as first reference month. The revision was carried out in the framework agreement of the Member States of the European Union (EU), where it is obligatory, for reasons of comparability, these indicators be revised every five (5) years and specifically in years that end in (0) and (5).
Statistical classification	According to the common methodology of the member EU states of and Eurostat, the groups of products of the Agricultural Price Indices follow the same classification of the groups as in EAA (Economic Agricultural Accounts).
Geographical coverage	The indices cover the whole country.
Coverage of economic activities	The Input and Output Price Indices cover the transactions for products and services in the sector of agriculture and livestock. In addition, the olive oil and must – wine transactions are covered, which are included in the manufacturing sector when their production – manufacturing process takes place at the level of agricultural unit and thus it is considered to be an activity of the agricultural sector.
Seasonality	Seasonality of products influences the agricultural and livestock production and as a result some products are not available every month in a calendar year. Therefore, the annual weighting coefficients are divided only in the months when the products are available.
Statistical survey	<p>The sources of price collection are the agricultural cooperatives (unions), which collect the final products, as well as, the commercial and the industrial enterprises, which buy the final products directly from the producers.</p> <p>The price data for the output price index are collected from approximately 783 sources and those for input prices are collected from approximately 760 sources.</p>
Publication of data	The Input – Output Price Indices with the new base year (2010) are being released since June 2013 with the April 2013 data as first reference month. The time series with base year 2010=100.0 are available from January 2000 onwards.
References	More information on the methodology concerning the compilation and calculation of the indices and for the time series is available on the ELSTAT Website: http://www.statistics.gr/en/statistics/-/publication/DKT30/- .