



PRESS RELEASE

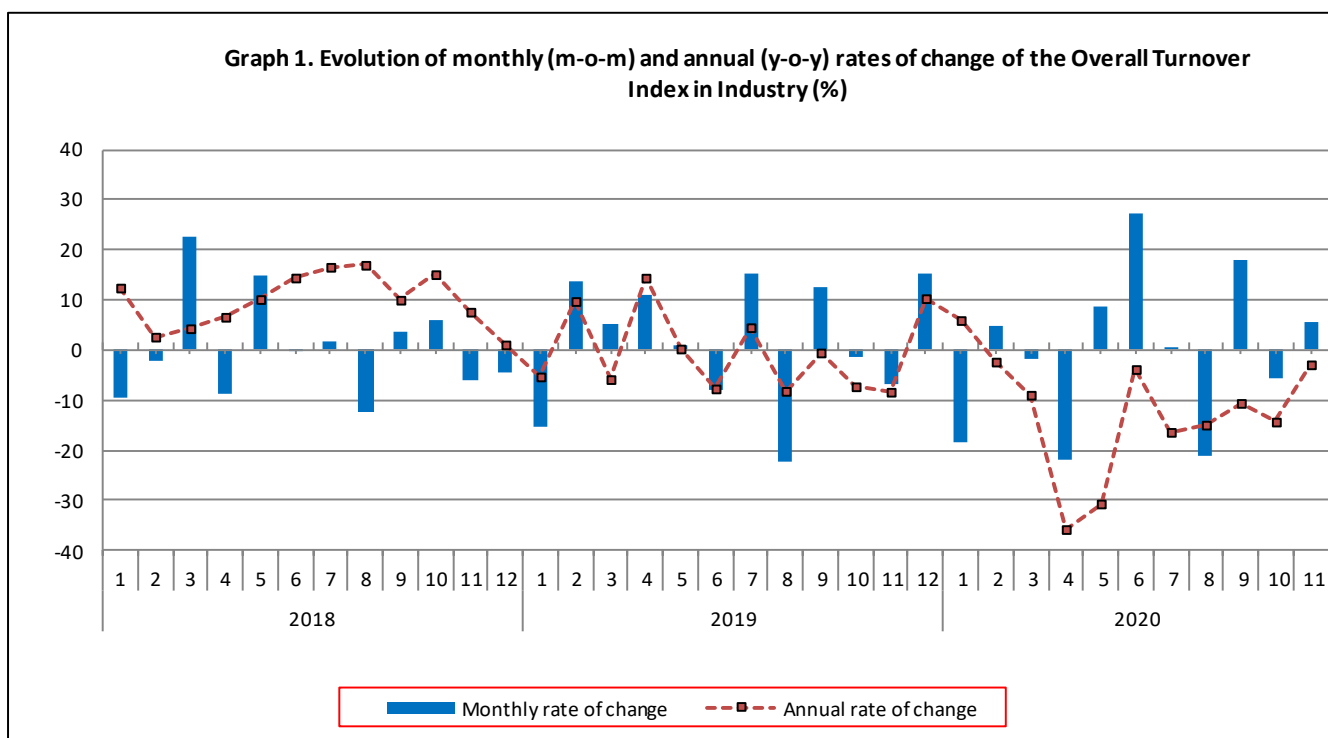
TURNOVER INDEX IN INDUSTRY: November 2020, y-o-y decrease of 2.9%

The Hellenic Statistical Authority announces the Turnover Index in Industry with base year 2015=100.0 for November 2020, on the basis of provisional data, which is as follows:

The Overall Turnover Index in Industry (both domestic and non-domestic market) in November 2020 recorded a decrease of 2.9% compared with the corresponding index of November 2019. The Overall Turnover Index in Industry in November 2019 decreased by 8.4% compared with the corresponding index in November 2018 (Table 1).

The Overall Turnover Index in Industry in November 2020, compared with October 2020, recorded an increase of 5.5% (Table 6).

The average Overall Turnover Index in Industry for the 12-month period from December 2019 to November 2020 decreased by 11.2%, compared with the corresponding index of the 12-month period from December 2018 to November 2019. The average Overall Turnover Index in Industry for the 12-month period from December 2018 to November 2019 decreased by 1.3% compared with the corresponding index of the 12-month period from December 2017 to November 2018 (Table 13).



Information for methodological issues:

Division of Business Statistics
Section of Manufacture-Construction Indices and Industrial Products
Head of the Section : Diamantaki Aikaterini
Tel: +30 213 135 2056
Fax: +30 213 135 2506
E-mail: a.diamantaki@statistics.gr

Information for data provision:

Tel: +30 213 135 2022, 2308, 2310
E-mail: data.dissem@statistics.gr

Evolution of the Overall Turnover Index in Industry in November 2020

I. Annual changes of the Overall Turnover Index in Industry: November 2020/November 2019

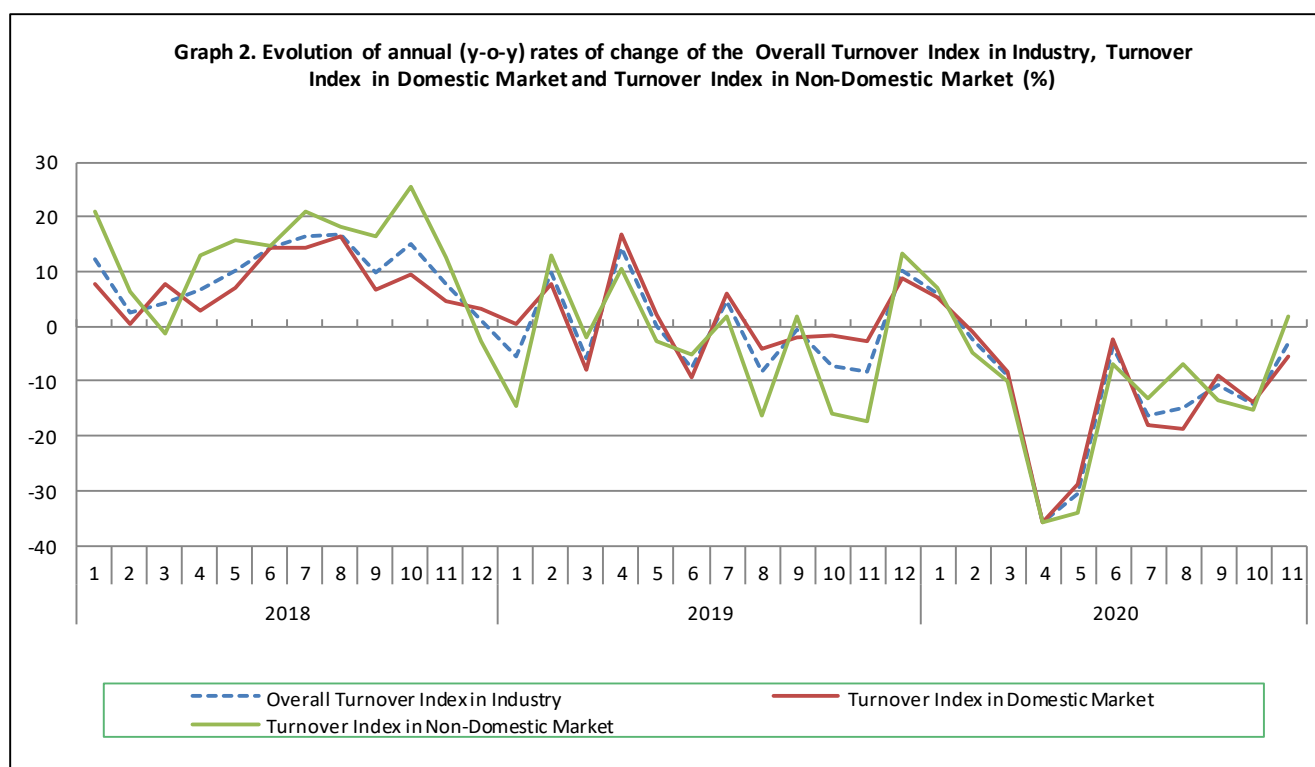
The 2.9% decrease in the Overall Turnover Index in Industry in November 2020, compared with the corresponding index in November 2019, was due to the following:

1. Changes in the sub-indices of the industrial sections (Table 1):

- The Turnover Index in Mining and quarrying decreased by 3.4%. The decrease was mainly the result of the annual changes of the sub-indices in the following 2-digit divisions: mining of coal and lignite - extraction of crude petroleum and natural gas - mining support service activities, mining of metal ores.
- The Turnover Index in Manufacturing decreased by 2.9%. The decrease was mainly the result of the annual changes of the sub-indices in the following 2-digit divisions: beverages, wearing apparel, coke and refined petroleum products.

2. Changes in the sub-indices in domestic and non-domestic markets:

- The Turnover Index in Industry in domestic market decreased by 5.3% (Table 2).
- The Turnover Index in Industry in non-domestic market increased by 1.7% (Table 3).



II. Annual changes of the Turnover Index in Industry in Domestic Market: November 2020/November 2019

The 5.3% decrease of the Turnover Index in Industry in domestic market in November 2020, compared with November 2019, is due to the following annual changes in the sub-indices of the following industrial sections (Table 2):

- The Turnover Index in Manufacturing decreased by 5.4%. The decrease was mainly the result of the annual changes of the sub-indices in the following 2-digit divisions: beverages, wearing apparel, coke and refined petroleum products.
- The Turnover Index in Mining and quarrying increased by 2.5%. The increase was mainly the result of the annual changes of the sub-indices in the following 2-digit divisions: mining of metal ores, other mining and quarrying products.

III. Annual changes of the Turnover Index in Industry in Non-Domestic Market: November 2020/November 2019

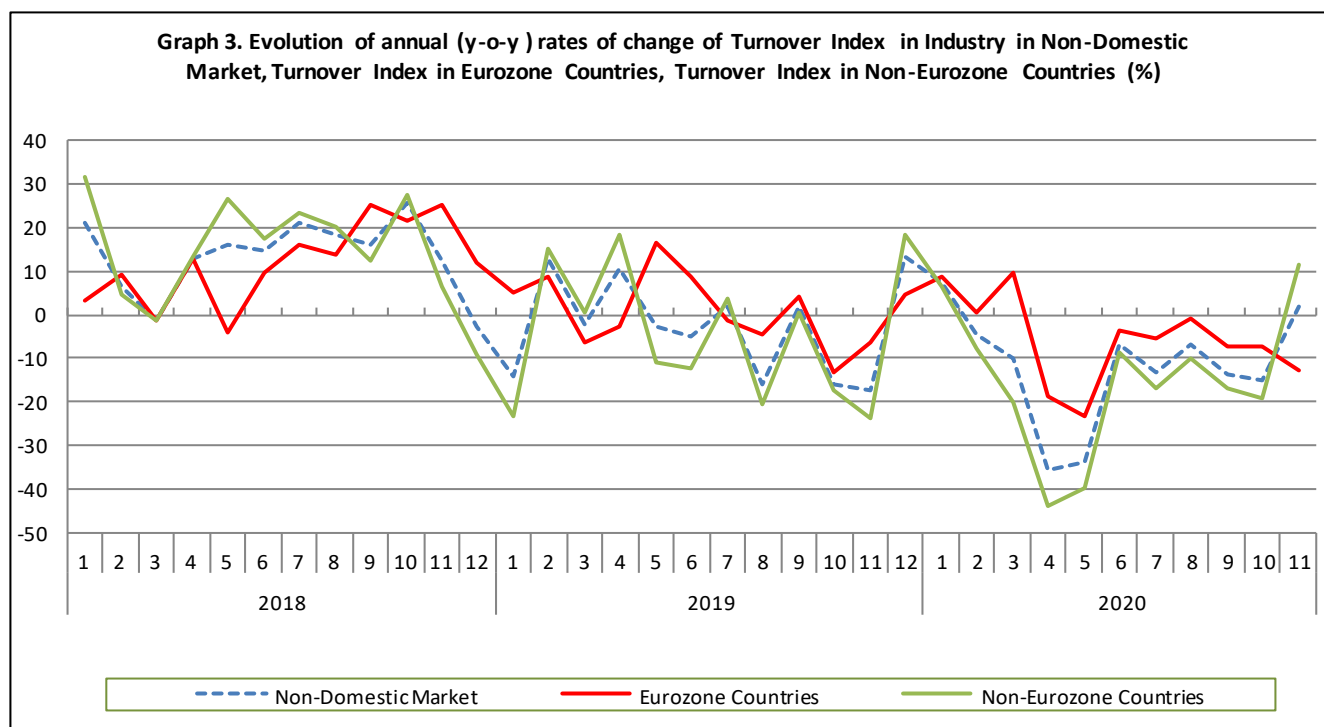
The 1.7% increase of the Turnover Index in Industry in Non-Domestic market in November 2020, compared with November 2019, was due to the following:

1. Changes in the sub-indices of the industrial sections (Table 3):

- The Turnover Index in Manufacturing increased by 1.9%. The increase was mainly the result of the annual changes of the sub-indices in the following 2-digit divisions: chemicals and chemical products, basic pharmaceutical products and pharmaceutical preparations, basic metals, fabricated metal products, except machinery and equipment.
- The Turnover Index in Mining and quarrying decreased by 7.4%. The decrease was mainly the result of the annual changes of the sub-indices in the following 2-digit divisions: mining of metal ores, other mining and quarrying products.

2. Changes in the sub-indices in Eurozone and Non-Eurozone countries:

- The Turnover Index in Industry in non-Eurozone countries increased by 11.7% (Table 5).
- The Turnover Index in Industry in Eurozone countries decreased by 12.7% (Table 4).



Monthly changes of the Overall Turnover Index in Industry: November 2020/ October 2020

The 5.5% increase of the Overall Turnover Index in Industry in November 2020, compared with the corresponding index in October 2020, was due to the following:

1. Changes in the sub-indices of industrial sections (Table 6):

- The Turnover Index in Manufacturing increased by 5.7%.
- The Turnover Index in Mining and quarrying decreased by 8.1%.

2. Changes in the sub-indices in domestic and non-domestic market:

- The Turnover Index in Industry in domestic market increased by 3.0% (Table 7).
- The Turnover Index in Industry in non-domestic market increased by 10.1% (Table 8).

Table 1. Annual rates of change of the Turnover Index in Industry: Total Market

Base year: 2015=100.0

Code		Division	Weights	November			Rate of change (%)	
				2020*	2019	2018	2020/2019	2019/2018
OVERALL INDEX				102.89	105.94	115.60	-2.9	-8.4
B	MINING AND QUARRYING		100.00	99.16	102.62	94.99	-3.4	8.0
05-06-09	Mining of coal and lignite - Extraction of crude petroleum and natural gas - Mining support service activities		21.19	21.24	32.09	56.70	-33.8	-43.4
07	Mining of metal ores		17.56	169.16	178.99	123.97	-5.5	44.4
08	Other mining and quarrying products		61.25	106.04	105.13	99.92	0.9	5.2
C	MANUFACTURING		100.00	102.94	105.99	115.88	-2.9	-8.5
10	Food		23.39	108.28	105.27	101.59	2.9	3.6
11	Beverages		3.57	68.88	88.15	79.57	-21.9	10.8
12	Tobacco products		1.19	131.65	130.59	132.37	0.8	-1.3
13	Textiles		1.28	95.99	110.89	105.35	-13.4	5.3
14	Wearing apparel		1.80	49.97	98.44	110.21	-49.2	-10.7
15	Leather and related products		0.34	42.48	97.12	80.17	-56.3	21.2
16	Wood and products of wood and cork, except furniture		0.72	111.57	111.27	110.16	0.3	1.0
17	Paper and paper products		2.44	120.55	113.48	113.90	6.2	-0.4
18	Printing and reproduction of recorded products		1.17	91.61	100.75	101.73	-9.1	-1.0
19	Coke and refined petroleum products		28.73	69.24	95.21	125.01	-27.3	-23.8
20	Chemicals and chemical products		4.43	109.11	103.49	104.01	5.4	-0.5
21	Basic pharmaceutical products and pharmaceutical preparations		3.67	209.58	143.56	149.31	46.0	-3.8
22	Rubber and plastic products		3.47	109.37	107.91	108.27	1.4	-0.3
23	Other non-metallic mineral products		3.31	116.05	107.97	117.93	7.5	-8.4
24	Basic metals		7.19	138.24	113.06	149.19	22.3	-24.2
25	Fabricated metal products, except machinery and equipment		4.51	106.16	93.87	103.06	13.1	-8.9
26	Computers, electronic and optical products		0.78	165.13	201.34	145.48	-18.0	38.4
27	Electrical equipment		2.65	179.11	155.57	136.74	15.1	13.8
28	Machinery and equipment n.e.c.		1.56	122.20	120.86	115.29	1.1	4.8
29	Motor vehicles, trailers and semi-trailers		0.23	160.99	126.37	104.69	27.4	20.7
30	Other transport equipment		0.52	63.64	60.06	88.79	6.0	-32.4
31	Furniture		0.97	102.76	119.82	117.73	-14.2	1.8
32	Other manufacturing		0.66	83.21	109.77	97.95	-24.2	12.1
33	Repair and installation of machinery and equipment		1.42	107.81	101.57	87.80	6.1	15.7
MAIN INDUSTRIAL GROUPINGS								
1	Energy		28.57	68.91	94.79	124.42	-27.3	-23.8
2	Intermediate goods		28.29	122.93	110.69	119.58	11.1	-7.4
3	Capital goods		7.00	116.76	112.52	110.11	3.8	2.2
4	Consumer Durables		1.86	111.22	131.15	116.47	-15.2	12.6
5	Consumer Non-Durables		34.28	111.38	108.61	106.03	2.6	2.4

* Provisional data

Note: The indices and the percentage changes are rounded up to two and one decimal digits, respectively, when published.

Table 2. Annual rates of change of the Turnover Index in Industry: Domestic Market

Base year: 2015=100.0

Code	Division	Weights	November			Rate of change (%)	
			2020*	2019	2018	2020/2019	2019/2018
OVERALL INDEX			98.77	104.32	107.15	-5.3	-2.6
B	MINING AND QUARRYING	100.00	75.43	73.59	82.07	2.5	-10.3
05-06-09	Mining of coal and lignite - Extraction of crude petroleum and natural gas - Mining support service activities	31.66	24.96	37.94	67.03	-34.2	-43.4
07	Mining of metal ores	12.83	114.06	108.12	88.40	5.5	22.3
08	Other mining and quarrying products	55.50	95.29	85.93	89.19	10.9	-3.7
C	MANUFACTURING	100.00	99.04	104.68	107.44	-5.4	-2.6
10	Food	28.50	103.05	101.87	98.10	1.2	3.8
11	Beverages	4.86	67.64	86.35	74.98	-21.7	15.2
12	Tobacco products	0.51	181.60	164.14	120.84	10.6	35.8
13	Textiles	1.11	85.46	105.26	95.02	-18.8	10.8
14	Wearing apparel	1.77	42.80	104.72	106.83	-59.1	-2.0
15	Leather and related products	0.41	41.58	88.49	87.13	-53.0	1.6
16	Wood and products of wood and cork, except furniture	0.96	108.18	109.51	108.05	-1.2	1.4
17	Paper and paper products	3.12	115.55	110.71	111.71	4.4	-0.9
18	Printing and reproduction of recorded products	1.63	74.39	85.40	93.86	-12.9	-9.0
19	Coke and refined petroleum products	24.90	53.80	96.16	110.99	-44.1	-13.4
20	Chemicals and chemical products	4.90	104.59	101.00	101.20	3.6	-0.2
21	Basic pharmaceutical products and pharmaceutical preparations	3.85	210.97	124.83	127.11	69.0	-1.8
22	Rubber and plastic products	3.31	103.40	100.90	102.51	2.5	-1.6
23	Other non-metallic mineral products	3.31	124.37	109.55	114.54	13.5	-4.4
24	Basic metals	3.49	174.19	136.63	153.22	27.5	-10.8
25	Fabricated metal products, except machinery and equipment	4.25	128.10	112.61	127.02	13.8	-11.3
26	Computers, electronic and optical products	0.40	133.80	158.38	123.43	-15.5	28.3
27	Electrical equipment	2.24	213.30	158.31	165.91	34.7	-4.6
28	Machinery and equipment n.e.c.	1.46	119.21	126.24	104.68	-5.6	20.6
29	Motor vehicles, trailers and semi-trailers	0.27	178.17	126.56	100.79	40.8	25.6
30	Other transport equipment	0.58	49.28	50.47	68.31	-2.4	-26.1
31	Furniture	1.35	94.74	108.86	107.85	-13.0	0.9
32	Other manufacturing	0.88	76.43	108.05	92.36	-29.3	17.0
33	Repair and installation of machinery and equipment	1.92	115.36	104.49	90.99	10.4	14.8
MAIN INDUSTRIAL GROUPINGS							
1	Energy	24.89	53.57	95.67	110.45	-44.0	-13.4
2	Intermediate goods	25.73	125.43	110.31	115.11	13.7	-4.2
3	Capital goods	7.19	126.54	117.89	113.62	7.3	3.8
4	Consumer Durables	2.31	97.70	115.54	113.35	-15.4	1.9
5	Consumer Non-Durables	39.88	104.84	102.77	98.44	2.0	4.4

* Provisional data

Note: The indices and the percentage changes are rounded up to two and one decimal digits, respectively, when published.

Table 3. Annual rates of change of the Turnover Index in Industry: Non-Domestic Market

Base year: 2015=100.0

Code	Division	Weights	November			Rate of change (%)	
			2020*	2019	2018	2020/2019	2019/2018
OVERALL INDEX			110.99	109.13	132.24	1.7	-17.5
B	MINING AND QUARRYING	100.00	130.12	140.52	111.83	-7.4	25.6
05-06-09	Mining of coal and lignite - Extraction of crude petroleum and natural gas - Mining support service activities	7.53	0.77	0.00	0.00	-	-
07	Mining of metal ores	23.74	208.05	229.00	149.07	-9.1	53.6
08	Other mining and quarrying products	68.74	117.37	125.35	111.22	-6.4	12.7
C	MANUFACTURING	100.00	110.66	108.58	132.59	1.9	-18.1
10	Food	13.27	130.52	119.74	116.42	9.0	2.9
11	Beverages	1.01	80.66	105.32	123.38	-23.4	-14.6
12	Tobacco products	2.53	111.51	117.06	137.02	-4.7	-14.6
13	Textiles	1.61	110.44	118.62	119.52	-6.9	-0.8
14	Wearing apparel	1.86	63.46	86.59	116.58	-26.7	-25.7
15	Leather and related products	0.19	46.34	134.22	50.23	-65.5	167.2
16	Wood and products of wood and cork, except furniture	0.24	138.47	125.24	126.86	10.6	-1.3
17	Paper and paper products	1.11	148.37	128.92	126.08	15.1	2.3
18	Printing and reproduction of recorded products	0.26	306.14	291.85	199.82	4.9	46.1
19	Coke and refined petroleum products	36.32	90.22	93.93	144.06	-4.0	-34.8
20	Chemicals and chemical products	3.50	121.61	110.39	111.78	10.2	-1.2
21	Basic pharmaceutical products and pharmaceutical preparations	3.30	206.36	186.84	200.60	10.4	-6.9
22	Rubber and plastic products	3.79	119.73	120.06	118.25	-0.3	1.5
23	Other non-metallic mineral products	3.31	99.53	104.85	124.65	-5.1	-15.9
24	Basic metals	14.54	121.14	101.85	147.27	18.9	-30.8
25	Fabricated metal products, except machinery and equipment	5.03	69.42	62.48	62.92	11.1	-0.7
26	Computers, electronic and optical products	1.52	181.44	223.70	156.95	-18.9	42.5
27	Electrical equipment	3.44	134.93	152.02	99.05	-11.2	53.5
28	Machinery and equipment n.e.c.	1.76	127.10	112.01	132.72	13.5	-15.6
29	Motor vehicles, trailers and semi-trailers	0.14	94.07	125.62	119.88	-25.1	4.8
30	Other transport equipment	0.40	104.57	87.36	147.17	19.7	-40.6
31	Furniture	0.21	204.85	259.48	243.53	-21.1	6.6
32	Other manufacturing	0.22	135.73	123.09	141.24	10.3	-12.9
33	Repair and installation of machinery and equipment	0.43	41.51	75.91	59.77	-45.3	27.0
MAIN INDUSTRIAL GROUPINGS							
1	Energy	35.82	89.89	93.59	143.54	-3.9	-34.8
2	Intermediate goods	33.33	119.13	111.27	126.38	7.1	-12.0
3	Capital goods	6.62	95.85	101.05	102.59	-5.1	-1.5
4	Consumer Durables	0.98	174.19	203.83	131.03	-14.5	55.6
5	Consumer Non-Durables	23.25	133.49	128.35	131.71	4.0	-2.6

* Provisional data

Note: The indices and the percentage changes are rounded up to two and one decimal digits, respectively, when published.

Table 4. Annual rates of change of the Turnover Index in Industry: Eurozone Countries

Base year: 2015=100.0

CodeSections and main groupings		November			Rate of change (%)	
		2020*	2019	2018	2020/2019	2019/2018
OVERALL INDEX		112.50	128.84	137.83	-12.7	-6.5
INDUSTRIAL SECTIONS						
B	MINING AND QUARRYING	142.83	148.60	126.45	-3.9	17.5
C	MANUFACTURING	111.89	128.45	138.06	-12.9	-7.0
MAIN INDUSTRIAL GROUPINGS						
1	Energy	70.31	120.65	158.35	-41.7	-23.8
2	Intermediate goods	123.07	127.17	136.59	-3.2	-6.9
3	Capital goods	109.76	122.12	120.06	-10.1	1.7
4	Consumer Durables	288.25	375.77	208.78	-23.3	80.0
5	Consumer Non-Durables	124.11	128.85	125.03	-3.7	3.1

* Provisional data

Table 5. Annual rates of change of the Turnover Index in Industry: Non-Eurozone Countries

Base year: 2015=100.0

CodeSections and main groupings		November			Rate of change (%)	
		2020*	2019	2018	2020/2019	2019/2018
OVERALL INDEX		110.20	98.66	129.26	11.7	-23.7
INDUSTRIAL SECTIONS						
B	MINING AND QUARRYING	121.77	135.22	102.24	-9.9	32.3
C	MANUFACTURING	110.01	98.07	129.70	12.2	-24.4
MAIN INDUSTRIAL GROUPINGS						
1	Energy	95.53	85.79	139.27	11.4	-38.4
2	Intermediate goods	116.57	100.90	119.72	15.5	-15.7
3	Capital goods	91.14	93.91	96.67	-3.0	-2.9
4	Consumer Durables	95.42	85.09	77.34	12.1	10.0
5	Consumer Non-Durables	142.62	127.86	138.21	11.5	-7.5

* Provisional data

Note: The indices and the percentage changes are rounded up to two and one decimal digits, respectively, when published.

Table 6. Monthly rate of change of the Turnover Index in Industry: Total Market

Base year: 2015=100.0

Code	Sections and main groupings	November 2020*	October 2020**	Rate of change (%) Nov. 2020/ Oct. 2020
OVERALL INDEX		102.89	97.56	5.5
INDUSTRIAL SECTIONS				
B	MINING AND QUARRYING	99.16	107.86	-8.1
C	MANUFACTURING	102.94	97.42	5.7
MAIN INDUSTRIAL GROUPINGS				
1	Energy	68.91	54.08	27.4
2	Intermediate goods	122.93	118.87	3.4
3	Capital goods	116.76	108.44	7.7
4	Consumer Durables	111.22	101.76	9.3
5	Consumer Non-Durables	111.38	113.77	-2.1

Table 7. Monthly rate of change of the Turnover Index in Industry: Domestic Market

Base year: 2015=100.0

Code	Sections and main groupings	November 2020*	October 2020**	Rate of change (%) Nov. 2020/ Oct. 2020
OVERALL INDEX		98.77	95.91	3.0
INDUSTRIAL SECTIONS				
B	MINING AND QUARRYING	75.43	74.94	0.7
C	MANUFACTURING	99.04	96.15	3.0
MAIN INDUSTRIAL GROUPINGS				
1	Energy	53.57	53.76	-0.3
2	Intermediate goods	125.43	117.11	7.1
3	Capital goods	126.54	114.56	10.5
4	Consumer Durables	97.70	93.68	4.3
5	Consumer Non-Durables	104.84	105.31	-0.4

Table 8. Monthly rate of change of the Turnover Index in Industry: Non-Domestic Market

Base year: 2015=100.0

Code	Sections and main groupings	November 2020*	October 2020**	Rate of change (%) Nov. 2020/ Oct. 2020
OVERALL INDEX		110.99	100.82	10.1
INDUSTRIAL SECTIONS				
B	MINING AND QUARRYING	130.12	150.83	-13.7
C	MANUFACTURING	110.66	99.94	10.7
MAIN INDUSTRIAL GROUPINGS				
1	Energy	89.89	54.52	64.9
2	Intermediate goods	119.13	121.55	-2.0
3	Capital goods	95.85	95.34	0.5
4	Consumer Durables	174.19	139.37	25.0
5	Consumer Non-Durables	133.49	142.36	-6.2

* Provisional data ** Revised data

Note: The indices and the percentage changes are rounded up to two and one decimal digits, respectively, when published.

Table 9. Monthly rate of change of the Turnover Index in Industry: Eurozone Countries

Base year: 2015=100.0

Code	Sections and main groupings	November 2020*	October 2020**	Rate of change (%) Nov. 2020/ Oct. 2020
OVERALL INDEX		112.50	105.74	6.4
INDUSTRIAL SECTIONS				
B	MINING AND QUARRYING	142.83	94.42	51.3
C	MANUFACTURING	111.89	105.97	5.6
MAIN INDUSTRIAL GROUPINGS				
1	Energy	70.31	26.52	165.1
2	Intermediate goods	123.07	126.02	-2.3
3	Capital goods	109.76	113.45	-3.3
4	Consumer Durables	288.25	193.36	49.1
5	Consumer Non-Durables	124.11	133.66	-7.1

* Provisional data ** Revised data

Table 10. Monthly rate of change of the Turnover Index in Industry: Non-Eurozone Countries

Base year: 2015=100.0

Code	Sections and main groupings	November 2020*	October 2020**	Rate of change (%) Nov. 2020/ Oct. 2020
OVERALL INDEX		110.20	98.20	12.2
INDUSTRIAL SECTIONS				
B	MINING AND QUARRYING	121.77	187.87	-35.2
C	MANUFACTURING	110.01	96.75	13.7
MAIN INDUSTRIAL GROUPINGS				
1	Energy	95.53	62.59	52.6
2	Intermediate goods	116.57	118.64	-1.7
3	Capital goods	91.14	89.20	2.2
4	Consumer Durables	95.42	102.09	-6.5
5	Consumer Non-Durables	142.62	150.83	-5.4

* Provisional data ** Revised data

Note: The indices and the percentage changes are rounded up to two and one decimal digits, respectively, when published.

Table 11. Evolution of the Turnover Index in Industry (y-o-y changes): Total Market

Base year: 2015=100.0

Year and month		Overall Index (Total Market)		Turnover Index in Industry in Domestic Market		Turnover Index in Industry in Non-Domestic Market	
		Index	Annual rate of change (%)	Index	Annual rate of change (%)	Index	Annual rate of change (%)
2019:	11	105.94	-8.4	104.32	-2.6	109.13	-17.5
	12	121.97	10.3	117.67	8.7	130.44	13.3
2020*:	1	99.30	6.0	97.02	5.3	103.78	7.2
	2	103.96	-2.3	98.45	-0.9	114.80	-4.7
	3	102.08	-9.0	97.28	-8.4	111.53	-9.9
	4	79.81	-35.8	74.93	-35.8	89.41	-35.8
	5	86.84	-30.7	85.25	-28.7	89.97	-34.1
	6	110.65	-3.8	108.89	-2.2	114.13	-6.7
	7	110.80	-16.4	107.93	-18.0	116.45	-13.2
	8	87.42	-14.9	86.57	-18.6	89.08	-6.9
	9	103.26	-10.6	100.67	-8.9	108.37	-13.6
	10	97.56	-14.3	95.91	-13.9	100.82	-15.2
	11	102.89	-2.9	98.77	-5.3	110.99	1.7

*Provisional data

Table 12. Evolution of the Turnover Index in Industry (y-o-y changes): Non-Domestic Market

Base year: 2015=100.0

Year and month		Overall Index (Non-Domestic Market)		Turnover Index in Industry in Eurozone Countries		Turnover Index in Industry in Non-Eurozone Countries	
		Index	Annual rate of change (%)	Index	Annual rate of change (%)	Index	Annual rate of change (%)
2019:	11	109.13	-17.5	128.84	-6.5	98.66	-23.7
	12	130.44	13.3	123.44	4.5	134.16	18.2
2020*:	1	103.78	7.2	116.25	8.6	97.15	6.4
	2	114.80	-4.7	119.58	0.7	112.26	-7.5
	3	111.53	-9.9	132.68	9.5	100.29	-20.0
	4	89.41	-35.8	107.29	-18.7	79.91	-44.2
	5	89.97	-34.1	105.56	-23.6	81.68	-39.8
	6	114.13	-6.7	132.88	-3.6	104.16	-8.7
	7	116.45	-13.2	121.19	-5.5	113.93	-17.0
	8	89.08	-6.9	91.12	-0.7	88.00	-10.0
	9	108.37	-13.6	112.12	-7.2	106.38	-16.8
	10	100.82	-15.2	105.74	-7.5	98.20	-19.0
	11	110.99	1.7	112.50	-12.7	110.20	11.7

*Provisional data

Note: The indices and the percentage changes are rounded up to two and one decimal digits, respectively, when published.

Table 13. Average indices and rates of change (%) of the 12-month periods of Turnover Index in Industry: Total Market
Base year: 2015=100.0

Code	Division	Average Indices of 12-month periods			Rate of change (%) 2020/2019	Rate of change (%) 2019/2018
		Dec. 2019- Nov. 2020*	Dec. 2018- Nov. 2019	Dec. 2017- Nov. 2018		
	OVERALL INDEX	100.54	113.16	114.64	-11.2	-1.3
B	MINING AND QUARRYING	99.75	106.82	110.64	-6.6	-3.5
05-06-09	Mining of coal and lignite - Extraction of crude petroleum and natural gas - Mining support service activities	29.59	86.74	103.59	-65.9	-16.3
07	Mining of metal ores	189.59	151.45	144.24	25.2	5.0
08	Other mining and quarrying products	98.26	100.96	103.44	-2.7	-2.4
C	MANUFACTURING	100.55	113.25	114.69	-11.2	-1.3
10	Food	102.93	103.71	101.72	-0.8	2.0
11	Beverages	97.81	116.94	114.77	-16.4	1.9
12	Tobacco products	132.26	127.91	111.19	3.4	15.0
13	Textiles	96.30	107.63	107.52	-10.5	0.1
14	Wearing apparel	68.42	93.62	97.65	-26.9	-4.1
15	Leather and related products	58.53	89.14	94.13	-34.3	-5.3
16	Wood and products of wood and cork, except furniture	102.30	106.60	104.34	-4.0	2.2
17	Paper and paper products	113.86	113.93	112.52	-0.1	1.3
18	Printing and reproduction of recorded products	88.83	96.73	96.41	-8.2	0.3
19	Coke and refined petroleum products	79.94	117.90	130.42	-32.2	-9.6
20	Chemicals and chemical products	119.11	116.55	110.89	2.2	5.1
21	Basic pharmaceutical products and pharmaceutical preparations	165.61	139.73	116.17	18.5	20.3
22	Rubber and plastic products	108.76	106.29	103.18	2.3	3.0
23	Other non-metallic mineral products	102.27	110.31	107.40	-7.3	2.7
24	Basic metals	118.94	127.70	136.23	-6.9	-6.3
25	Fabricated metal products, except machinery and equipment	97.42	100.83	99.95	-3.4	0.9
26	Computers, electronic and optical products	160.49	154.96	128.74	3.6	20.4
27	Electrical equipment	124.63	127.67	112.08	-2.4	13.9
28	Machinery and equipment n.e.c.	105.53	107.74	106.78	-2.0	0.9
29	Motor vehicles, trailers and semi-trailers	112.98	110.24	90.61	2.5	21.7
30	Other transport equipment	61.78	65.01	71.02	-5.0	-8.5
31	Furniture	104.67	114.53	115.87	-8.6	-1.2
32	Other manufacturing	88.01	104.64	100.12	-15.9	4.5
33	Repair and installation of machinery and equipment	98.35	95.18	92.40	3.3	3.0
	MAIN INDUSTRIAL GROUPINGS					
1	Energy	79.61	117.74	130.25	-32.4	-9.6
2	Intermediate goods	111.41	114.93	114.14	-3.1	0.7
3	Capital goods	103.41	104.11	99.42	-0.7	4.7
4	Consumer Durables	98.80	107.25	108.68	-7.9	-1.3
5	Consumer Non-Durables	108.54	110.05	105.46	-1.4	4.4

*Provisional data

Note: The indices and the percentage changes are rounded up to two and one decimal digits, respectively, when published.

METHODOLOGICAL NOTES

Generally	The Industrial Turnover Index is an indicator of an enterprise's business cycle showing the monthly evolution of the market of goods and services in industry. The first compilation of the Turnover Index was completed by the Hellenic Statistical Authority in 2006, with base year 2000=100.0 and is compiled from 2000 onwards.
Purpose of the index	The purpose of this index is to measure the monthly activity of the industrial sector in terms of value. Turnover comprises the totals invoiced by the observation units during the reference period and corresponds to the market sales of goods or services supplied to third parties. The purposes and the characteristics of the Turnover Index apply, as well, to the indices for the distinction between domestic and non-domestic turnover.
Legal Framework	The compilation and publication of the Turnover Index is based on the framework of the implementation of Council Regulation (EC) No 1165/1998 concerning short-term statistics (STS-R), as well as Regulation (EC) No 1158/2005 of the European Parliament and of the Council amending Council Regulation (EC) No 1165/1998. Furthermore, this index is governed by Regulation (EC) No 1893/2006 of the European Parliament and of the Council, by Commission Regulation (EC) No 656/2007 and by Regulation (EC) No 451/2008 of the Council.
Reference period	Month.
Base year	2015=100.0.
Revision	The latest revision of the Turnover Index in Industry (base year 2015=100.0) took place in the framework of Council Regulation (EC) No 1165/1998 concerning short-term statistics. In accordance with this regulation the index is revised every five years, in years ending in 0 or 5.
Statistical classifications	At the level of classes of economic activities, the statistical classification of economic activities NACE Rev. 2 of EU was used (Regulation No 1893/2006), while at the level of main industrial groupings, the allocation of two-digit and three-digit NACE Rev. 2 headings to categories of aggregate classification was used, in accordance with Commission Regulation No 656/2007.
Geographical coverage	The index covers the whole Country.
Coverage of economic activities	The Turnover Index in Industry is compiled for all activities listed in Sections B (mining and quarrying) and C (manufacturing) of the NACE Rev. 2 statistical classification.
Computation of the Index	The Turnover Index in Industry is a fixed base index. This index is calculated at a first stage at the four-digit level of economic activity and subsequently, with the implementation of appropriate weighting coefficients, the index is calculated at higher levels (three-level and two-level of economic activity) as well as at the level of Main Industrial Groupings (MIGs).
Data collection, processing and imputation in the context of the COVID-19 pandemic	The compilation of the indices was mainly based on data collected by the enterprises (via web-based application, email), as well as data from administrative sources. For November 2020 there was no significant change in the data collection compared to previous reference months.
Publication of data	The Turnover Index in Industry (2015=100.0) is released since August 2019 with June 2019 as first reference month. Data with base year 2015=100.0 are available from January 2000 onwards.
References	More information about the methodology concerning the compilation and calculation of the index and for the time series is available on the website of the Hellenic Statistical Authority (ELSTAT) (http://www.statistics.gr/en/statistics/-/publication/DKT24/).