



PRESS RELEASE

CONSUMER PRICE INDEX: December 2017, annual inflation 0.7%

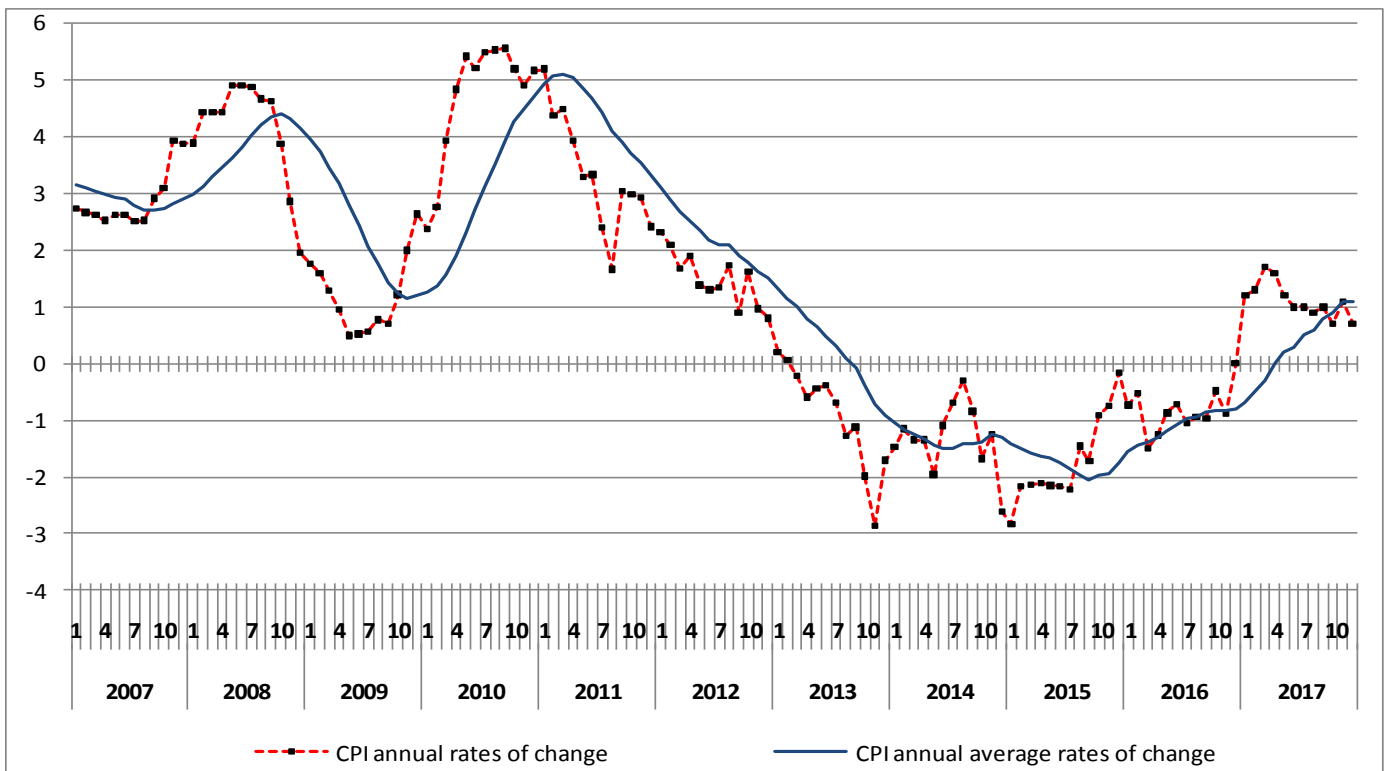
The evolution of the Consumer Price Index (CPI) of December 2017 (reference year 2009=100.0) is depicted as follows:

The CPI in December 2017 compared with December 2016 increased by 0.7%. In December 2016, the annual rate of change of the CPI remained unchanged (Table 2).

The CPI in December 2017 compared with November 2017, increased by 0.5%. In December 2016, the monthly rate of change of the CPI was 1.0% (Table 1).

The average CPI for the twelve - month period from January 2017 to December 2017, compared with the corresponding index for the period January 2016 to December 2016 increased by 1.1%. The annual rate of change of the average CPI between the twelve - month period January 2016 to December 2016 in comparison to the period January 2015 to December 2015 was -0.8% (Table 3).

Graph 1. Annual and annual average rates of change (%) of CPI



Information:

Economic and Short-Term Indices Division
Retail Prices and Price Indices Section
Argiro Kourtaki, Anastasios Koutelas
Tel: +30 213 135 2722, +30 213 135 2709
Fax: +30 213 135 2724
Email: cpi@statistics.gr

Analysis of changes of the CPI: December 2017

I. Monthly rates of change: December 2017 compared with November 2017 (Tables 1, 4)

The 0.5% increase of the Overall CPI in December 2017, compared with the corresponding index in November 2017 is, mainly, on account of the changes in the main groups of goods and services as follows:

1. An increase of:

- 0.1% in Food and non-alcoholic beverages, due to the increase, mainly, in the prices of: *fresh fish, pork, poultry, dried vegetables preserved or processed, potatoes*. This increase was partly offset by the decrease, mainly, in the prices of *fresh fruit*.
- 8.9% in Clothing and footwear, due to the recovery partly of prices up to normal levels before the 10-day period of winter sales.
- 0.6% in Household equipment, due to the recovery of prices up to normal levels before the 10-day period of winter sales.
- 0.1% in Transport, due to the increase, mainly, in the prices of *petrol*.

2. A decrease of:

- 0.2% Alcoholic beverages and tobacco, due to the decrease, mainly, in the prices of *alcoholic beverages (not served)*.
- 0.6% in Miscellaneous goods and services, due to the decrease, mainly, in the prices of *other appliances and articles for personal care*.

II. Annual rates of change: December 2017 compared with December 2016 (Tables 2, 5)

The increase of 0.7% of the Overall CPI in December 2017, compared with the corresponding index in December 2016 is, mainly, on account of the changes in the main groups of goods and services as follows:

1. An increase of:

- 0.5% in Food and non-alcoholic beverages due to the increase, mainly, in the prices of: *olive oil, fresh fruit, pork, coffee*. This increase was partly offset by the decrease, mainly, in the prices of: *fresh vegetables, poultry, milk cheese and eggs, potatoes*.
- 6.9 % in Alcoholic beverages and tobacco, due to the increase, mainly, in the prices of *tobacco*.
- 4.9% in Transport, due to the increase, mainly, in the prices of: *fuels and lubricants, tickets for passenger transport by air*. This increase was partly offset by the decrease, mainly, in the prices of *motorcars*.
- 1.3% in Communication, due to the increase, mainly, in the prices of *telephone services*.
- 0.2% in Education, due to the decrease, mainly, in the prices of fees of *secondary education*.
- 1.2% in Hotel - Cafés - Restaurants, due to the increase, mainly, in the prices of: *restaurants-confectioneries-cafés-buffets, hotels-motels-inns*.

2. A decrease of:

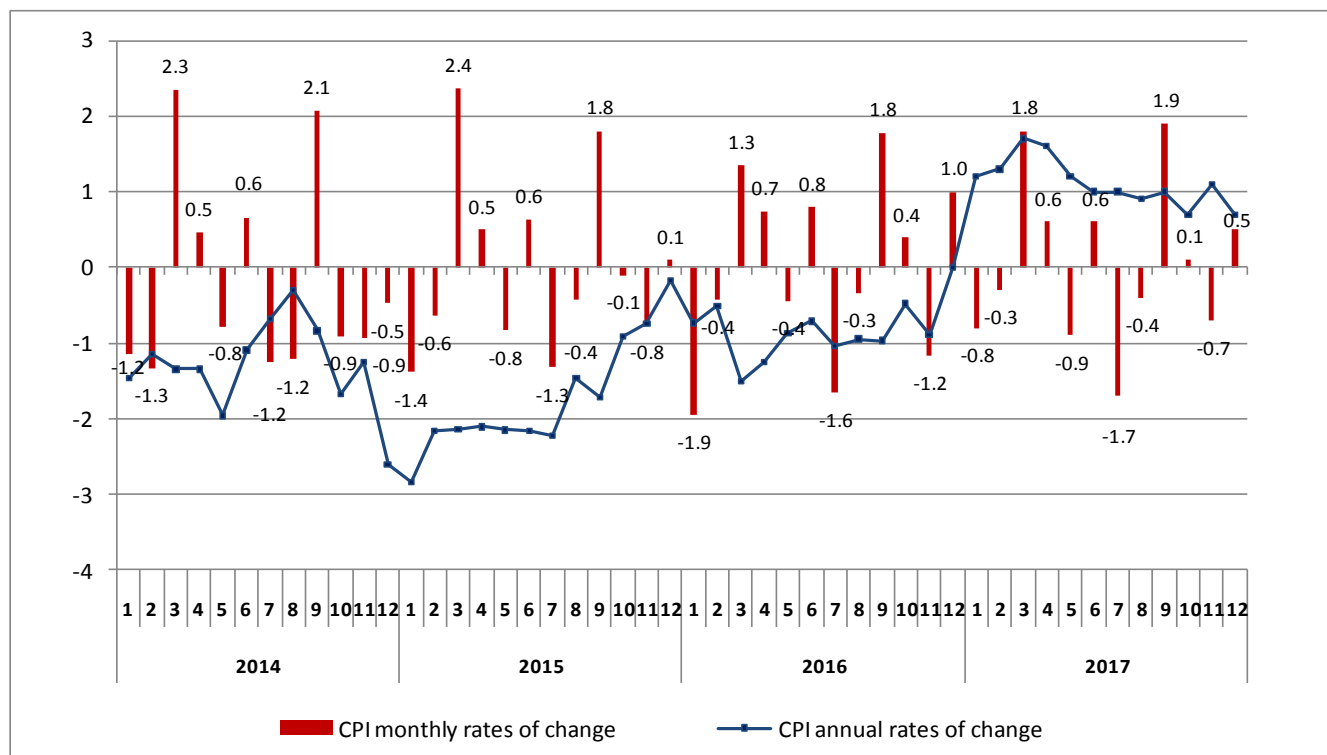
- 1.6% in Clothing and footwear, due to the decrease, mainly, in the prices of articles of clothing and footwear.
- 0.8% in Housing, due to the decrease, mainly, in the prices of: *actual rentals paid by tenants, electricity*. This decrease was partly offset by the increase, mainly, in the prices of *heating oil*.
- 2.2% in Household equipment, due to the decrease, mainly, in the prices of: *household textiles, major household appliances whether electric or not, non-durable household articles*.
- 1.2% in Health, due to the decrease, mainly, in the prices of: *pharmaceutical products, paramedical services, dental services, hospital and clinic services*.
- 1.6% in Recreation and culture, due to the decrease, mainly, in the prices of: *audiovisual and information processing equipment, major durables for recreation and culture*.
- 2.2% in Miscellaneous goods and services, due to the decrease, mainly, in the prices of: *other appliances and articles for personal care, motor vehicle insurance*.

**Table 1. Monthly rates of change of CPI
(Reference year: 2009=100.0)**

Main groups of goods and services	Weights HBS 2015 (%)	2017	2017	Rate of change %	2016	2016	Rate of change %
		December	November		December	November	
1. Food & non-alcoholic beverages	206.70	104.55	104.50	0.1	104.05	103.76	0.3
2. Alcoholic beverages and tobacco	41.68	146.32	146.65	-0.2	136.84	136.42	0.3
3. Clothing and footwear	64.54	103.06	94.67	8.9	104.76	93.44	12.1
4. Housing	133.54	119.15	119.16	0.0	120.13	119.24	0.7
5. Household equipment	46.46	90.01	89.49	0.6	92.00	91.58	0.5
6. Health	77.02	96.59	96.58	0.0	97.76	97.77	0.0
7. Transport	144.09	121.19	121.08	0.1	115.59	114.71	0.8
8. Communication	41.86	100.38	100.39	0.0	99.09	99.10	0.0
9. Recreation and culture	41.17	89.26	89.23	0.0	90.75	90.59	0.2
10. Education	32.79	89.22	89.22	0.0	89.03	89.03	0.0
11. Hotels - Cafés - Restaurants	102.82	107.22	107.19	0.0	105.91	105.94	0.0
12. Miscellaneous goods and services	67.36	91.99	92.50	-0.6	94.09	93.86	0.2
Overall Index	1000.00	106.33	105.77	0.5	105.64	104.57	1.0

Note: The indices are rounded up to two decimal figures when published and percentage changes up to one decimal figure when published.

Graph 2. Annual and monthly rates of change (%) of CPI



**Table 2. Inflation - Annual rates of change of CPI
(Reference year: 2009=100.0)**

I: December 2017/2016

Main groups of goods and services	December		Rate of change (%)	Effect
	2017	2016		
1. Food and non alcoholic beverages	104.55	104.05	0.5	0.0979
2. Alcoholic beverages and tobacco	146.32	136.84	6.9	0.3737
3. Clothing and footwear	103.06	104.76	-1.6	-0.1040
4. Housing	119.15	120.13	-0.8	-0.1236
5. Household equipment	90.01	92.00	-2.2	-0.0873
6. Health	96.59	97.76	-1.2	-0.0850
7. Transport	121.19	115.59	4.9	0.7648
8. Communication	100.38	99.09	1.3	0.0511
9. Recreation and culture	89.26	90.75	-1.6	-0.0581
10. Education	89.22	89.03	0.2	0.0057
11. Hotels - Cafés - Restaurants	107.22	105.91	1.2	0.1280
12. Miscellaneous goods and services	91.99	94.09	-2.2	-0.1339
Overall Index	106.33	105.64	0.7	

II: December 2016/2015

Main groups of goods and services	December		Rate of change (%)	Effect
	2016	2015		
1. Food and non alcoholic beverages	104.05	104.90	-0.8	-0.1743
2. Alcoholic beverages and tobacco	136.84	134.14	2.0	0.1096
3. Clothing and footwear	104.76	106.03	-1.2	-0.0783
4. Housing	120.13	118.02	1.8	0.2577
5. Household equipment	92.00	94.62	-2.8	-0.1267
6. Health	97.76	97.82	-0.1	-0.0046
7. Transport	115.59	114.22	1.2	0.1582
8. Communication	99.09	98.41	0.7	0.0276
9. Recreation and culture	90.75	92.13	-1.5	-0.0582
10. Education	89.03	89.35	-0.4	-0.0100
11. Hotels - Cafés - Restaurants	105.91	104.51	1.3	0.1375
12. Miscellaneous goods and services	94.09	95.85	-1.8	-0.1183
Overall Index	105.64	105.61	0.0	

Note: The indices are rounded up to two decimal figures when published and percentage changes up to one decimal figure when published.

**Table 3. Comparisons of the overall CPI
(Reference year: 2009=100.0)**

Year and month	Overall Index	Monthly rates of change %	Annual rates of change Inflation %	Annual average index (moving average)	Annual average rates of change %
2014: 1	107.37	-1.2	-1.5	108.68	-1.1
2	105.94	-1.3	-1.1	108.58	-1.2
3	108.42	2.3	-1.3	108.45	-1.3
4	108.92	0.5	-1.3	108.33	-1.3
5	108.05	-0.8	-2.0	108.15	-1.4
6	108.75	0.6	-1.1	108.05	-1.5
7	107.40	-1.2	-0.7	107.99	-1.5
8	106.09	-1.2	-0.3	107.96	-1.4
9	108.29	2.1	-0.8	107.88	-1.4
10	107.30	-0.9	-1.7	107.73	-1.4
11	106.30	-0.9	-1.2	107.62	-1.2
12	105.79	-0.5	-2.6	107.38	-1.3
Annual average	107.38	-	-	107.38	-1.3
2015: 1	104.32	-1.4	-2.8	107.13	-1.4
2	103.65	-0.6	-2.2	106.94	-1.5
3	106.10	2.4	-2.1	106.75	-1.6
4	106.63	0.5	-2.1	106.56	-1.6
5	105.73	-0.8	-2.1	106.36	-1.7
6	106.40	0.6	-2.2	106.17	-1.7
7	105.00	-1.3	-2.2	105.97	-1.9
8	104.54	-0.4	-1.5	105.84	-2.0
9	106.42	1.8	-1.7	105.68	-2.0
10	106.32	-0.1	-0.9	105.60	-2.0
11	105.51	-0.8	-0.7	105.54	-1.9
12	105.61	0.1	-0.2	105.52	-1.7
Annual average	105.52	-	-	105.52	-1.7
2016: 1	103.56	-1.9	-0.7	105.46	-1.6
2	103.12	-0.4	-0.5	105.41	-1.4
3	104.51	1.3	-1.5	105.28	-1.4
4	105.28	0.7	-1.3	105.17	-1.3
5	104.81	-0.4	-0.9	105.09	-1.2
6	105.65	0.8	-0.7	105.03	-1.1
7	103.91	-1.6	-1.0	104.94	-1.0
8	103.55	-0.3	-0.9	104.85	-0.9
9	105.39	1.8	-1.0	104.77	-0.9
10	105.80	0.4	-0.5	104.73	-0.8
11	104.57	-1.2	-0.9	104.65	-0.8
12	105.64	1.0	0.0	104.65	-0.8
Annual average	104.65	-	-	104.65	-0.8
2017: 1	104.76	-0.8	1.2	104.75	-0.7
2	104.46	-0.3	1.3	104.86	-0.5
3	106.33	1.8	1.7	105.01	-0.3
4	107.01	0.6	1.6	105.16	0.0
5	106.06	-0.9	1.2	105.26	0.2
6	106.72	0.6	1.0	105.35	0.3
7	104.94	-1.7	1.0	105.44	0.5
8	104.48	-0.4	0.9	105.51	0.6
9	106.45	1.9	1.0	105.60	0.8
10	106.56	0.1	0.7	105.67	0.9
11	105.77	-0.7	1.1	105.77	1.1
12	106.33	0.5	0.7	105.82	1.1
Annual average	105.82	-	-	105.82	1.1

Note: The indices are rounded up to two decimal figures when published and percentage changes up to one decimal figure when published.

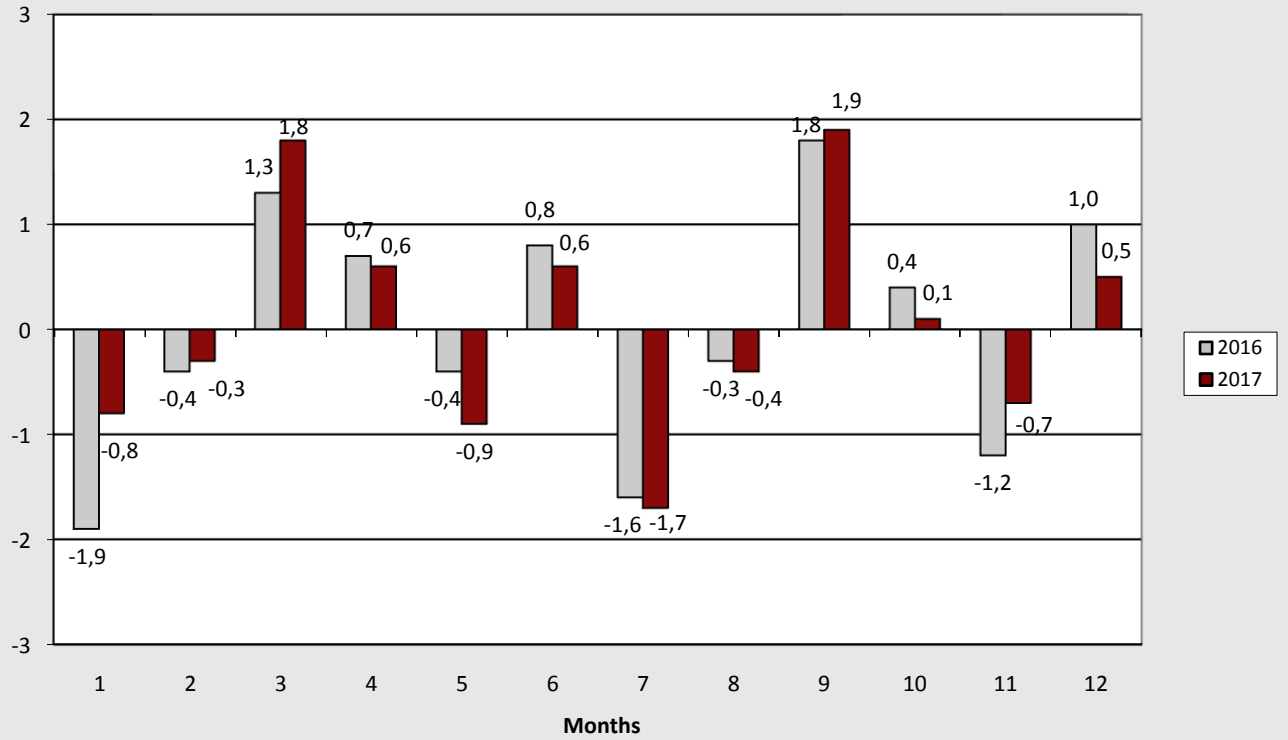
**Table 4. Major price changes from index comparison
December 2017 with November 2017 and their impact
in the Overall CPI**

Goods and services	Rate of change (%)	Impact
Fresh fruit	-5.8	-0.06
Pork	2.3	0.02
Poultry	2.0	0.01
Fresh fish	2.3	0.02
Potatoes	3.9	0.01
Dried vegetables preserved or processed	1.7	0.01
Alcoholic beverages (not served)	-1.4	-0.02
Actual rentals paid by tenants	-1.0	-0.03
Heating oil	1.3	0.06
Petrol	0.3	0.02
Other appliances and articles for personal care	-1.6	-0.04
Recovery of prices up to normal levels before the 10-day period of winter sales	-	0.54

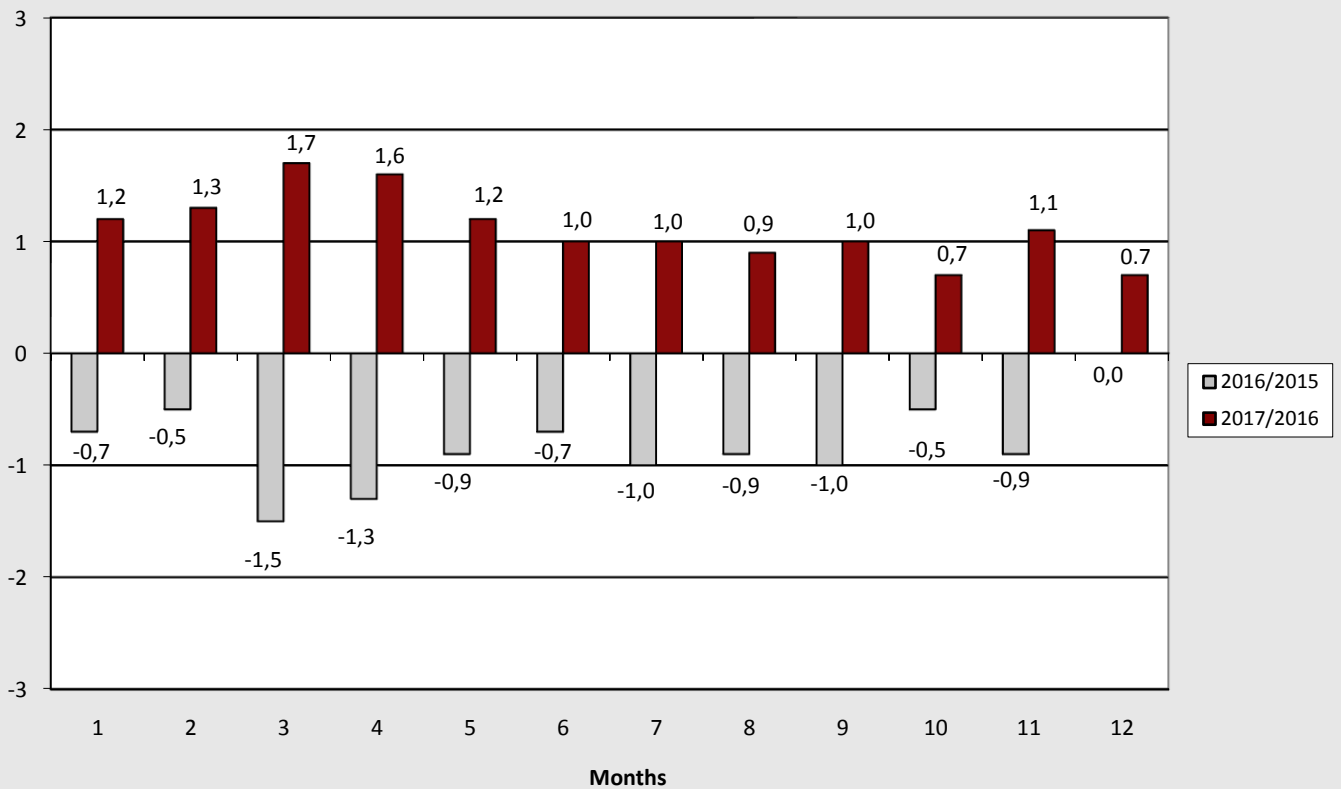
**Table 5. Major price changes from index comparison
December 2017 with December 2016 and their impact
in the Overall CPI**

Goods and services	Rate of change (%)	Impact
Pork	2.1	0.02
Poultry	-4.4	-0.03
Fresh fruit	4.0	0.04
Fresh vegetables	-2.0	-0.02
Milk cheese and eggs	-1.3	-0.05
Olive oil	12.7	0.15
Potatoes	-13.6	-0.06
Coffee	18.7	0.08
Tobacco	9.7	0.38
Clothing and footwear	-1.6	-0.10
Actual rentals paid by tenants	-5.4	-0.14
Electricity	-0.6	-0.03
Heating oil	3.6	0.14
Household textiles	-4.8	-0.02
Major household appliances electric or not	-3.1	-0.01
Non-durable household articles	-1.7	-0.02
Pharmaceutical products	-2.4	-0.05
Paramedical services	-4.1	-0.02
Dental services	-1.2	-0.01
Hospital and clinic services	0.5	0.01
Fuels and lubricants	5.3	0.40
Motorcars	-1.0	-0.02
Passenger transport by air	22.0	0.68
Telephone services	1.4	0.06
Audiovisual and information processing equipment	-5.8	-0.03
Major durables for recreation and culture	-3.1	-0.01
Secondary education	0.6	0.01
Restaurants - confectioneries - cafes - buffets	1.0	0.10
Hotels - motels - inns	4.4	0.02
Other appliances and articles for personal care	-3.7	-0.08
Motor vehicle insurance	-2.9	-0.04

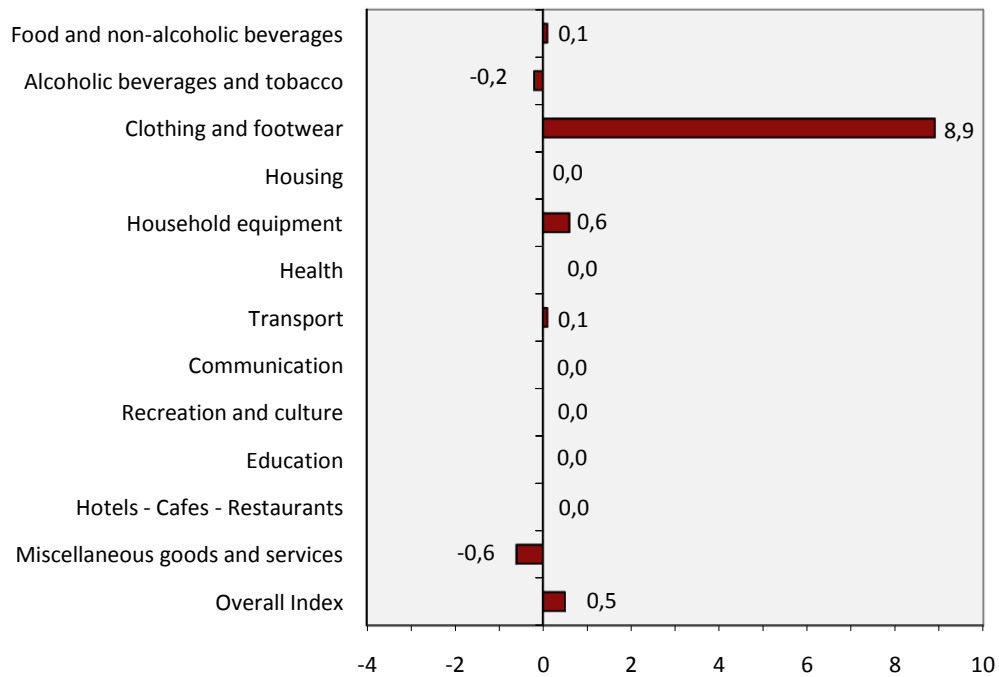
Graph 3. Monthly rates of change (%) of the overall CPI, 2016 and 2017



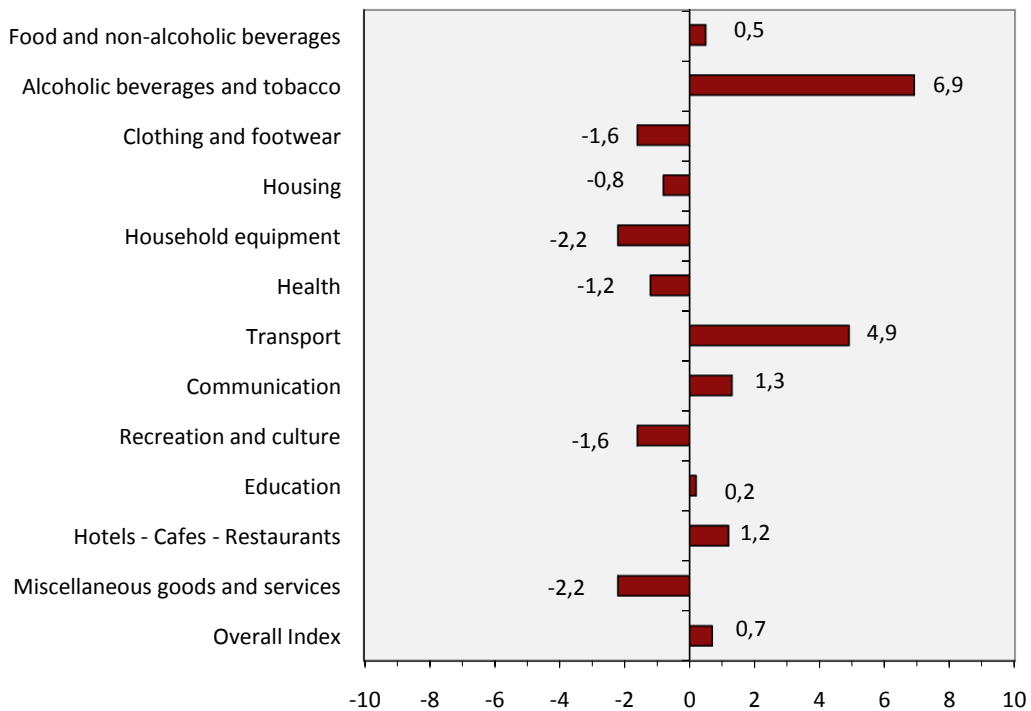
Graph 4. Annual rates of change (%) of the overall CPI, 2016 and 2017



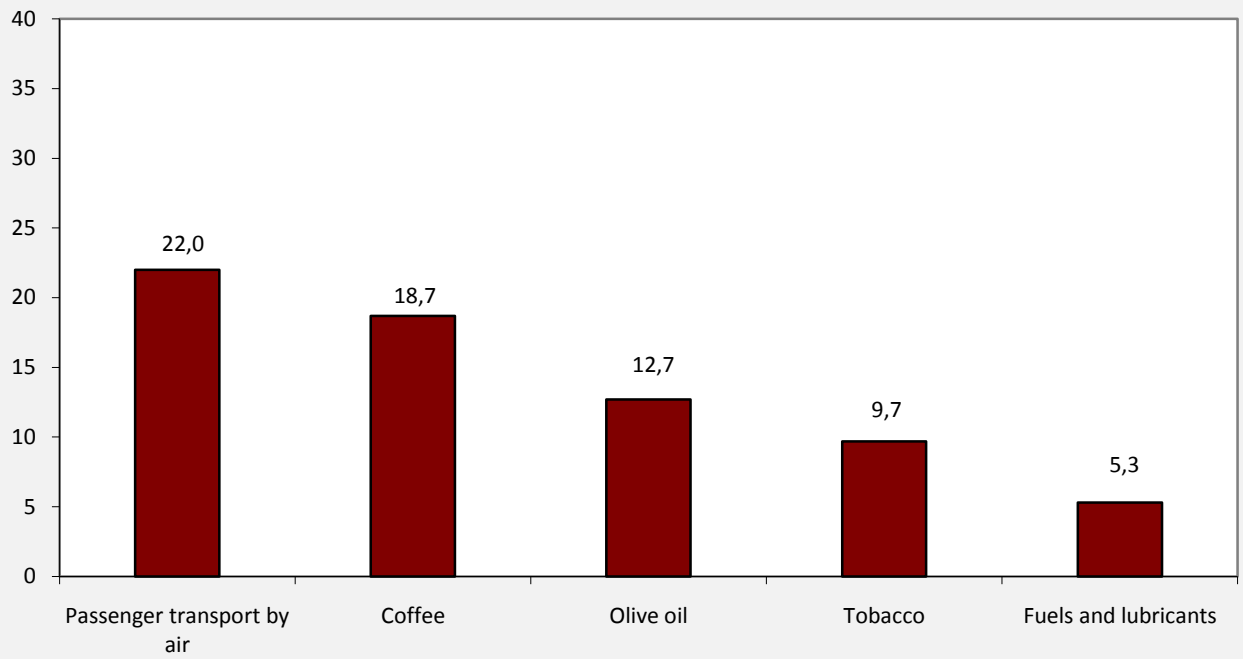
Graph 5. Monthly rates of change (%) of CPI between December 2017 and November 2017



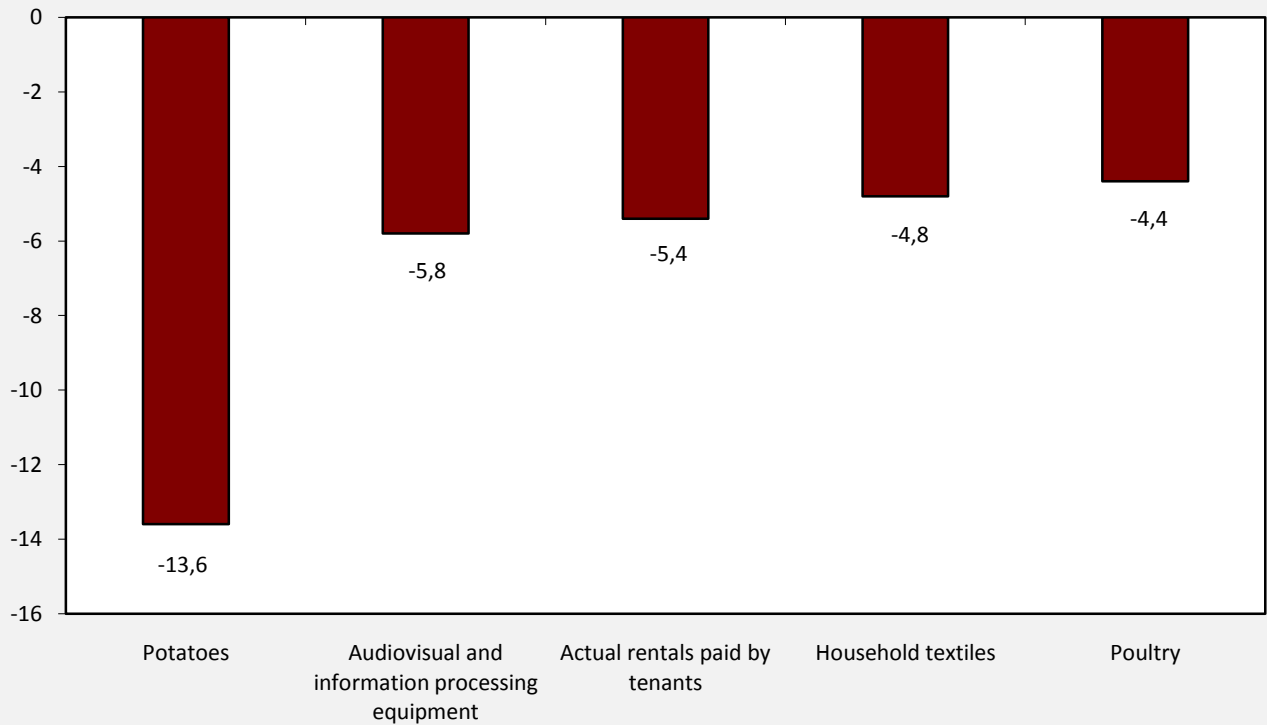
Graph 6. Annual rates of change (%) of CPI between December 2017 and December 2016



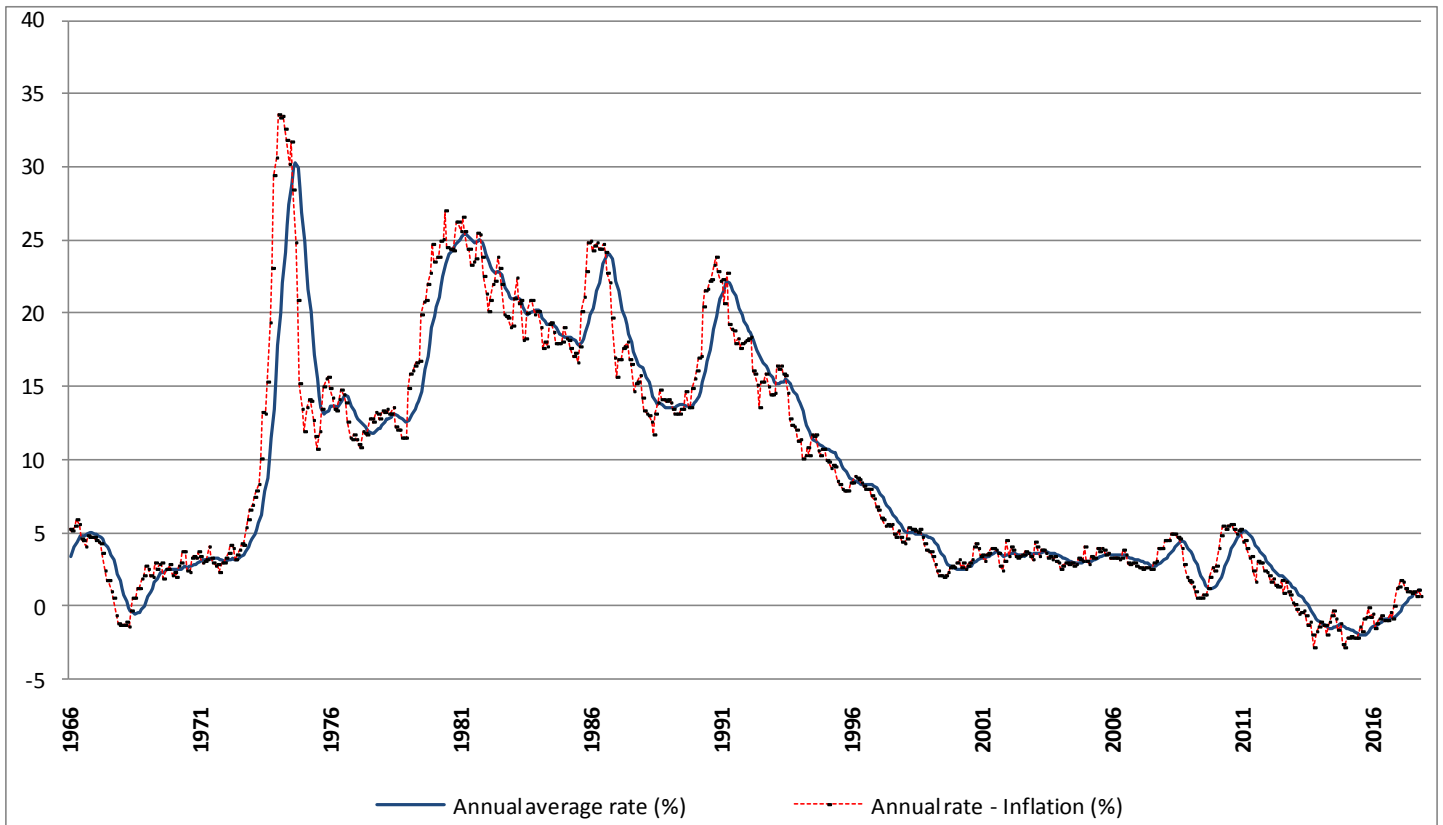
Graph 7. CPI highest annual increases (%)



Graph 8. CPI highest annual decreases (%)



Graph 9. Historical evolution of CPI, 1966 - 2017



METHODOLOGICAL NOTES

Generally	The Consumer Price Index (CPI) is compiled by the Hellenic Statistical Authority (ELSTAT) since 1959. Until the year 2000, the CPI referred to the urban areas of the country, while from 2001 onwards it refers to the whole country covering urban, semi urban and rural areas.
Purpose of the index	The purpose of the CPI is to measure the general level of prices of goods and services purchased by the average Greek household.
Legal basis	Law 3832/2010 .
Reference period	Month.
Base	December of the previous year.
Reference year	2009=100.0.
Chain linking Index	The CPI index follows the chain linking method, introducing new weights annually and having as a base December of the previous year. The weights are estimated on the basis of the most recent available data of the Household Budget Survey (HBS), extrapolated to the prices of December. The CPI, adjusted on an annual basis to the most recent consumption expenditure pattern of the private households of the country, ensures the representativeness of goods and services, which compose the "basket" of purchases of the average household.
Geographical and population coverage of the CPI	The CPI refers to the whole country and covers the resident households of the territory excluding collective households (hospitals, homes for the elderly, boarding houses, prisons, etc.) and non-resident households (tourists) in the country.
Classification of items	The classification of the CPI items (goods and services) is based on the international classification COICOP (Classification of Individual consumption by Purpose) as this has been adapted to the needs of the HICPs of the EU Member States with the COICOP5/HICP classification.
Weights of items	The weights of CPI items are updated every year, on the basis of the most recent available data of HBS. The weights are calculated as the share (%) of the expenditures for each group, subgroup and item (good or service) to the total household expenditure of the average household.
Price collection Cities	The CPI prices are collected in 27 cities with representative markets for the coverage of the 13 Regions of the country. The selection criteria of the price collection cities are the size and the particularities of their markets, the possibility of continuous price collection, the comparability of the index and the cost of price collection.
Population weights	The calculation of the population weights by regions is based on the population data of the 2011 General Population Census and the expenditure data of the latest available HBS by regions.
Selection of items	The composition of the "household basket" i.e. the selection of goods and services which are included in the calculation of CPI is updated annually, using the results of the latest available HBS, other market research, etc. The chain linking methodology allows the change of items of the household basket on an annual basis, in order to ensure the representativeness of the items involved in the calculation of groups and subgroups of CPI.
Price collection-Outlets	The prices collection outlets are retail stores, enterprises providing services, street markets etc. which are considered representative of the branches of shops, where the households make their purchases in the 27 selected cities. The methodology allows the renewal of price collection sources, annually, in order to maintain their representativeness in the calculation of CPI. Prices are collected by employees of ELSTAT as well as by external price collectors, hired on a temporary basis. They pay a visit to the selected outlets within a specific time period of a month (monthly prices) or on a specific day of the week (weekly prices). The collected prices correspond to the prices actually faced by the consumer.
Specification-Substitution of items	All the collected items are defined by the specification, that is the particular characteristics which determine the quality, the trade show and the identity, in general, of good products (such as brand, weight, package etc), in order to avoid any price variations attributable to differences in the specification. Once a specified item (good or service) is no longer available in the market or has ceased to be important, as regards consumption, it is substituted by a newly specified item, which has taken its place in the market.

Calculation of the Consumer Price Index

The Consumer Price Index is a Laspeyres-type index and it is calculated based on December of the previous year.

Implementation of formula in five-digit level of COICOP5

Specifically, if the five-digit item h includes q price collected items, then its index in month t of year T, $R_h^{t,T}$, is given by the following formula:

$$R_h^{t,T} = R_h^{12,T-1} \left[\frac{\sum_{i=1}^q w_i^T R_i^{t,T} / R_i^{12,T-1}}{\sum_{i=1}^q w_i^T} \right],$$

where:

$R_h^{12,T-1}$ = the index of the five-digit item h, in December of year T-1.

w_i^T = the weight of the price collected item I, in year T.

$R_i^{t,T}$ = the index of the price collected item I, in month t of year T.

$R_i^{12,T-1}$ = the index of the price collected item I, in December of year T-1.

A similar methodology is followed for the calculation of indices in the upper levels (two-digit, three-digit and four-digit) of COICOP5 and the calculation of the overall CPI as well.

Publication of data The published CPI time series (reference year 2009=100.0), covers the period from January 1959 onwards. The CPI data are released each month as scheduled, in accordance with the Press Releases Calendar of ELSTAT, with the [Press Release and the tables](#).

References Further information concerning the methodology and the compilation of the CPI is available in the [Methodological Publication CPI \(2009=100.0\)](#) and the [Single Integrated Metadata Structure \(SIMS\)](#).