

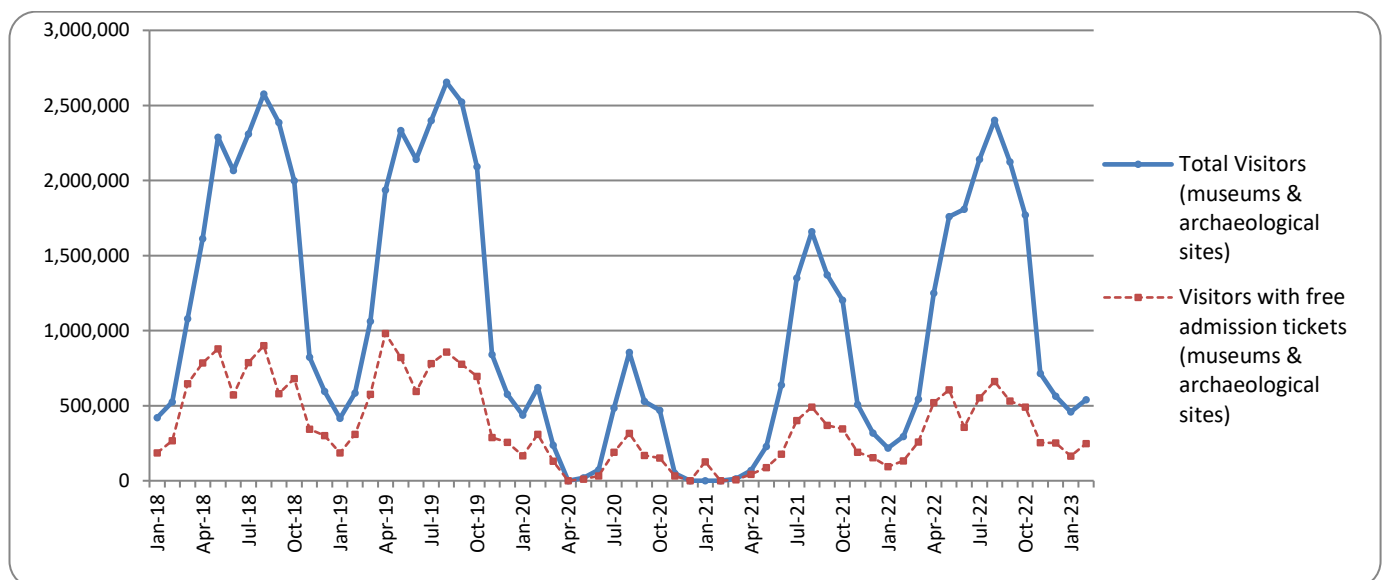


## SURVEY ON MUSEUMS AND ARCHAEOLOGICAL SITES ATTENDANCE FEBRUARY 2023

The Hellenic Statistical Authority (ELSTAT) announces the results of the *Survey on Museums and Archaeological Sites Attendance* for February 2023. More specifically:

- During February 2023 compared with the corresponding month of 2022, museums recorded a 95.6% increase in the number of visitors and a 114.4% increase in the number of free admission visitors, as well as a 137.9% increase in their receipts (Table 1).
- As regards archaeological sites, in February 2023 compared with the corresponding month of 2022, an increase of 74.4% was recorded in the number of visitors, of 62.2% in the number of free admission visitors and of 96.2% in the corresponding receipts (Table 1).
- During the two month period from January to February 2023, compared to the corresponding period of 2022, an increase of 110.7% was recorded in the number of visitors of Museums, of 123.9% in the number of free admission visitors and of 156.5% in the relevant receipts (Table 2).
- As regards Archaeological sites, during the two month period from January to February 2023, compared to the corresponding period of 2022, an increase of 84.2% was recorded in the number of visitors, while an increase of 47.8% was observed in the number of free admission visitors and of 131.5% in the relevant receipts (Table 2).

**Graph 1: Visitors of Museums and Archaeological sites (January 2018 – February 2023)**



**Information on methodological issues:**

Sectoral Statistics Division  
Tourism and Culture Statistics Section  
Head of Section: Eleni Papadopoulou  
Tel: +30 213 135 2168  
e-mail: [e.papadopoulou@statistics.gr](mailto:e.papadopoulou@statistics.gr)

**Information for data provision:**

Tel. +30 213 135 2022, 2308, 2310  
e-mail: [data.dissem@statistics.gr](mailto:data.dissem@statistics.gr)

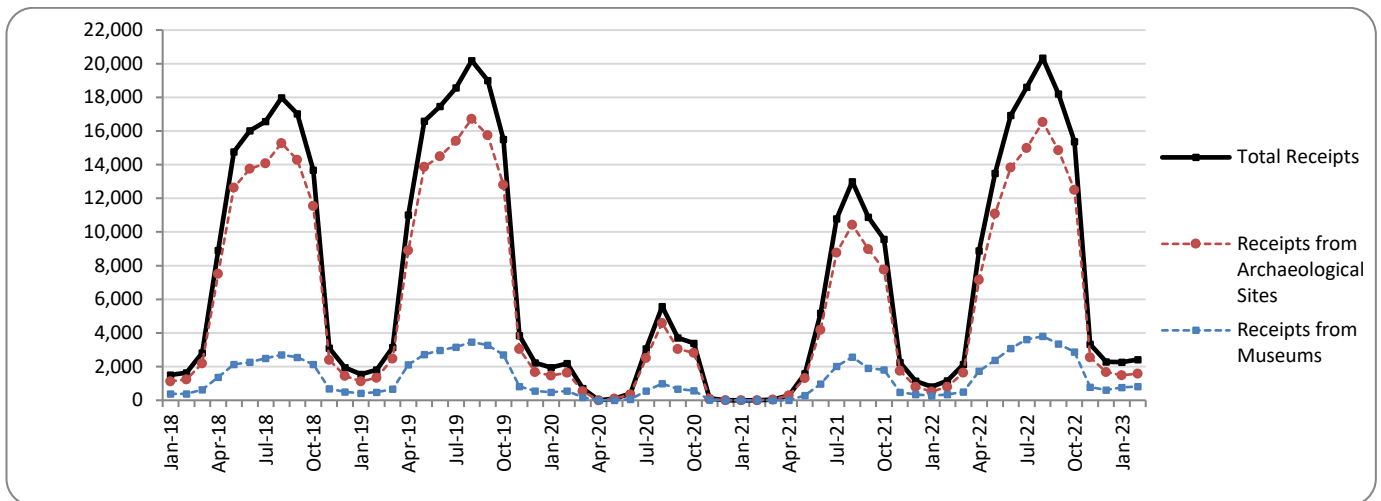
**TABLE 1: VISITORS OF MUSEUMS AND ARCHAEOLOGICAL SITES - TOTAL RECEIPTS  
(FEBRUARY 2022 & FEBRUARY 2023)**

<b>I. NUMBER OF VISITORS</b>			
Museums and Archaeological sites	2022	2023	Change 2023/2022
<b>Total number of visitors (A+B)</b>	<b>294,489</b>	<b>539,611</b>	<b>83.2%</b>
<b>A. Museums (C+E)</b>	<b>122,772</b>	<b>240,137</b>	<b>95.6%</b>
Acropolis Museum	34,723	87,722	152.6%
National Archaeological	11,937	28,760	140.9%
Ancient Olympia	1,095	1,293	18.1%
Palace of the Grand Master (Rhodes)	981	2,923	198.0%
Herakleion Archaeological (Crete)	1,560	4,161	166.7%
White Tower	4,288	6,487	51.3%
Delphi	4,018	8,787	118.7%
Other museums	64,170	100,004	55.8%
<b>B. Archaeological Sites (D+F)</b>	<b>171,717</b>	<b>299,474</b>	<b>74.4%</b>
Epidavros <sup>(1)</sup>	5,064	13,500	166.6%
The Acropolis of Mycenae & Atreus' Treasure	5,680	15,264	168.7%
The Acropolis of Athens	70,761	121,543	71.8%
Sounio	11,583	13,814	19.3%
The Acropolis of Lindos	432	794	83.8%
Royal Tombs of Vergina	2,552	10,702	319.4%
Ancient Olympia	2,130	6,013	182.3%
Knossos (Crete)	2,543	4,185	64.6%
Phaistos (Crete)	203	444	118.7%
Ancient Korinthos <sup>(1)</sup>	2,157	5,126	137.6%
Mystras <sup>(1)</sup>	2,057	3,343	62.5%
Delphi	7,679	16,378	113.3%
Other archaeological sites	58,876	88,368	50.1%
<b>II. VISITORS WHO PAID TICKET</b>			
	2022	2023	Change 2023/2022
<b>Total number of visitors who paid ticket (C+D)</b>	<b>161,124</b>	<b>292,892</b>	<b>81.8%</b>
C. Museums	64,481	115,173	78.6%
D. Archaeological sites	96,643	177,719	83.9%
<b>III. VISITORS WITH FREE ADMISSION TICKETS</b>			
	2022	2023	Change 2023/2022
<b>Total number of visitors with free admission ticket (E+F)</b>	<b>133,365</b>	<b>246,719</b>	<b>85.0%</b>
E. Museums	58,291	124,964	114.4%
F. Archaeological sites	75,074	121,755	62.2%
<b>IV. RECEIPTS (euros)</b>			
	2022	2023	Change 2023/2022
<b>Total Receipts (G+H)</b>	<b>1,155,755</b>	<b>2,411,191</b>	<b>108.6%</b>
G. Museums	344,842	820,482	137.9%
H. Archaeological sites	810,913	1,590,709	96.2%

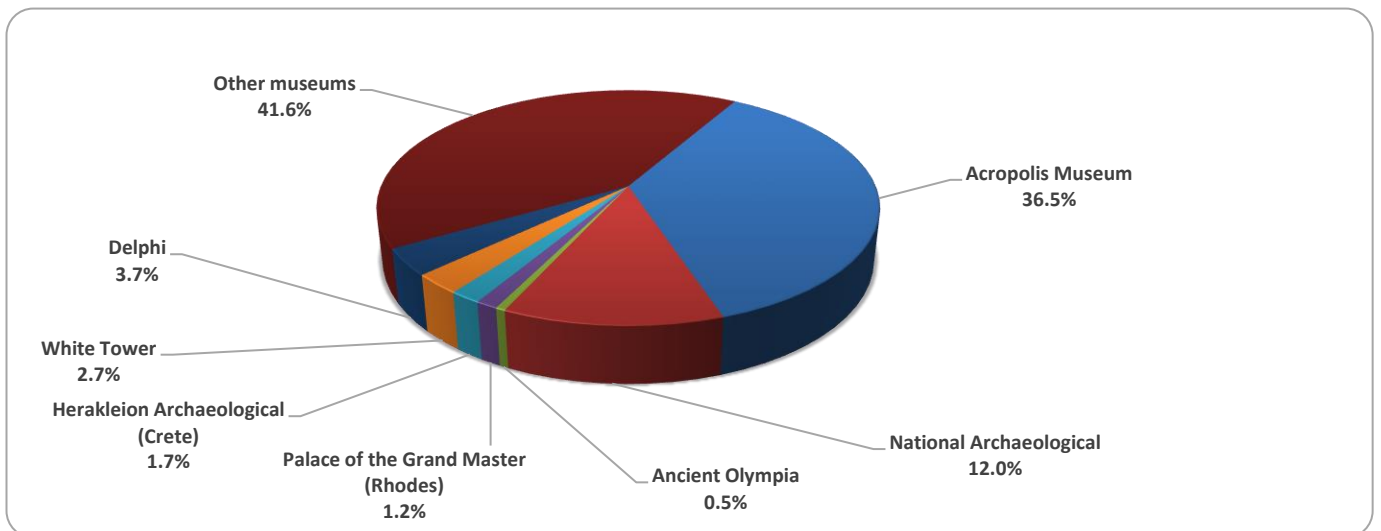
<sup>(1)</sup> Flat rate ticket, valid both for the museum and the archaeological site.

The following graphs depict the evolution of the receipts of Museums and Archaeological Sites (Graph 2), as well as the number of visitors by Museum (Graph 3) and by Archaeological Site (Graph 4).

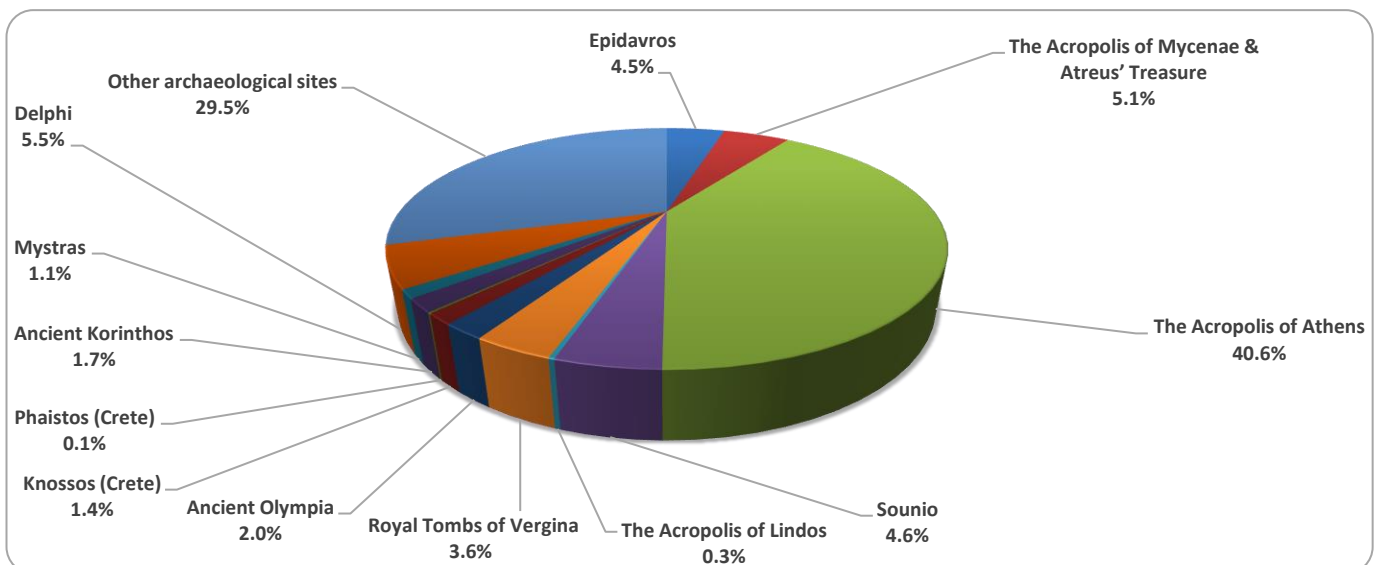
**Graph 2: Receipts from Museums and Archaeological Sites (January 2018 – February 2023)**  
(in thousand euro)



**Graph 3: Percentage distribution of visitors by Museum, February 2023**



**Graph 4: Percentage distribution of visitors by Archaeological site, February 2023**



**TABLE 2: VISITORS OF MUSEUMS AND ARCHAEOLOGICAL SITES - TOTAL RECEIPTS  
(2021, 2022, JANUARY - FEBRUARY 2022, 2023)**

<b>I. VISITORS</b>					
Museums and Archaeological sites	2021 <sup>(2)</sup>	2022	JANUARY-FEBRUARY		change 2023/2022
			2022	2023	
<b>Total number of visitors (A+B)</b>	<b>7,357,026</b>	<b>15,583,552</b>	<b>511,317</b>	<b>998,154</b>	<b>95.2%</b>
<b>A. Museums (C+E)</b>	<b>2,047,481</b>	<b>4,636,901</b>	<b>213,060</b>	<b>448,844</b>	<b>110.7%</b>
Acropolis Museum	547,908	1,397,353	58,049	153,554	164.5%
National Archaeological	189,208	474,821	19,855	50,961	156.7%
Ancient Olympia	34,367	85,179	2,016	2,087	3.5%
Palace of the Grand Master (Rhodes)	142,530	263,521	1,739	5,001	187.6%
Herakleion Archaeological (Crete)	127,574	249,715	3,039	8,942	194.2%
White Tower	77,983	193,916	8,360	21,475	156.9%
Delphi	58,102	151,512	7,865	15,613	98.5%
Other museums	869,809	1,820,884	112,137	191,211	70.5%
<b>B. Archaeological Sites (D+F)</b>	<b>5,309,545</b>	<b>10,946,651</b>	<b>298,257</b>	<b>549,310</b>	<b>84.2%</b>
Epidavros <sup>(1)</sup>	182,118	393,077	9,261	21,776	135.1%
The Acropolis of Mycenae & Atreus' Treasure	156,227	372,448	10,872	24,854	128.6%
The Acropolis of Athens	1,219,717	3,019,841	114,983	226,649	97.1%
Sounio	171,348	314,506	22,462	28,446	26.6%
The Acropolis of Lindos	349,418	596,331	698	1,350	93.4%
Royal Tombs of Vergina	56,790	168,444	6,126	17,336	183.0%
Ancient Olympia	143,549	338,365	4,071	11,615	185.3%
Knossos (Crete)	445,160	831,320	4,463	9,342	109.3%
Phaistos (Crete)	48,599	74,817	420	1,073	155.5%
Ancient Korinthos <sup>(1)</sup>	59,271	153,616	4,041	9,717	140.5%
Mystras <sup>(1)</sup>	78,762	139,512	4,491	6,271	39.6%
Delphi	146,061	332,870	15,733	29,570	87.9%
Other archaeological sites	2,252,525	4,211,504	100,636	161,311	60.3%
<b>II. VISITORS WHO PAID TICKET</b>					
	2021 <sup>(2)</sup>	2022	JANUARY-FEBRUARY		change 2023/2022
			2022	2023	
<b>Total number of visitors who paid ticket (C+D)</b>	<b>5,090,418</b>	<b>10,877,516</b>	<b>283,686</b>	<b>587,511</b>	<b>107.1%</b>
C. Museums	1,289,896	2,883,216	115,647	230,710	99.5%
D. Archaeological sites	3,800,522	7,994,300	168,039	356,801	112.3%
<b>III. VISITORS WITH FREE ADMISSION TICKETS</b>					
	2021 <sup>(2)</sup>	2022	JANUARY-FEBRUARY		change 2023/2022
			2022	2023	
<b>Total number of visitors with free admission ticket (E+F)</b>	<b>2,266,608</b>	<b>4,706,036</b>	<b>227,631</b>	<b>410,643</b>	<b>80.4%</b>
E. Museums	757,585	1,753,685	97,413	218,134	123.9%
F. Archaeological sites	1,509,023	2,952,351	130,218	192,509	47.8%
<b>IV. RECEIPTS (euros)</b>					
	2021 <sup>(2)</sup>	2022	JANUARY -DECEMBER		change 2023/2022
			2022	2023	
<b>Total Receipts (G+H)</b>	<b>54,735,194</b>	<b>121,535,113</b>	<b>1,949,994</b>	<b>4,668,380</b>	<b>139.4%</b>
G. Museums	10,385,644	23,361,465	617,717	1,584,735	156.5%
H. Archaeological sites	44,349,550	98,173,648	1,332,277	3,083,645	131.5%

<sup>(1)</sup> Flat rate ticket, valid both for the museum and the archaeological site.

<sup>(2)</sup> The operation of museums was suspended gradually from November 1<sup>st</sup> 2020 until May 13<sup>th</sup> 2021. The operation of archaeological sites was suspended from November 7<sup>th</sup> 2020 until March 21<sup>st</sup> 2021, in the framework of the preventative measures against the Covid-19 pandemic.

## EXPLANATORY NOTES

<b>Survey on Museums and Archaeological Sites Attendance</b>	<p>The Survey on Museums and Archaeological Sites Attendance has been producing results since 1970. The survey collects data from the Hellenic Organization of Cultural Resources Development (HOCRED), supervised by the Ministry of Culture and Sports, on the number of visitors and the receipts from the tickets sold in the Museums and Archaeological sites of the country. The corresponding data for the Acropolis Museum is available from December 2009 onwards.</p>
<b>Legal Framework</b>	<p>The survey is conducted since 1970 on a regular basis and it produces results on a monthly and yearly basis, in compliance with the Joint Ministerial Decision 15189/B379/73.</p>
<b>Reference Period</b>	<p>1/2/2023 - 28/2/2023</p>
<b>Methodology and Definitions</b>	<p>The survey is conducted on a monthly basis from data mainly collected from the Hellenic Organization of Cultural Resources Development (HOCRED), supervised by the Ministry of Culture and Sports, on the number of visitors and the receipts from the tickets sold in the Museums and Archaeological sites of the Country. ELSTAT tabulates and presents the data for the whole of the Country, by month and by year.</p> <p><b>Number of flat rate tickets:</b></p> <p>From April 1999 onwards, in some museums and the nearby archaeological sites, in addition to the ordinary ticket, a new “flat rate ticket” was established, which is valid for both the museum and the nearby archaeological site. The total number of these flat rate tickets for <b>February 2023</b> was <b>14,772</b></p>
<b>References</b>	<p>More information on the Survey on Museums and Archaeological Sites Attendance and detailed time series are available on: <a href="http://www.statistics.gr/en/statistics/-/publication/SCI21/">http://www.statistics.gr/en/statistics/-/publication/SCI21/</a></p>