



## PRESS RELEASE

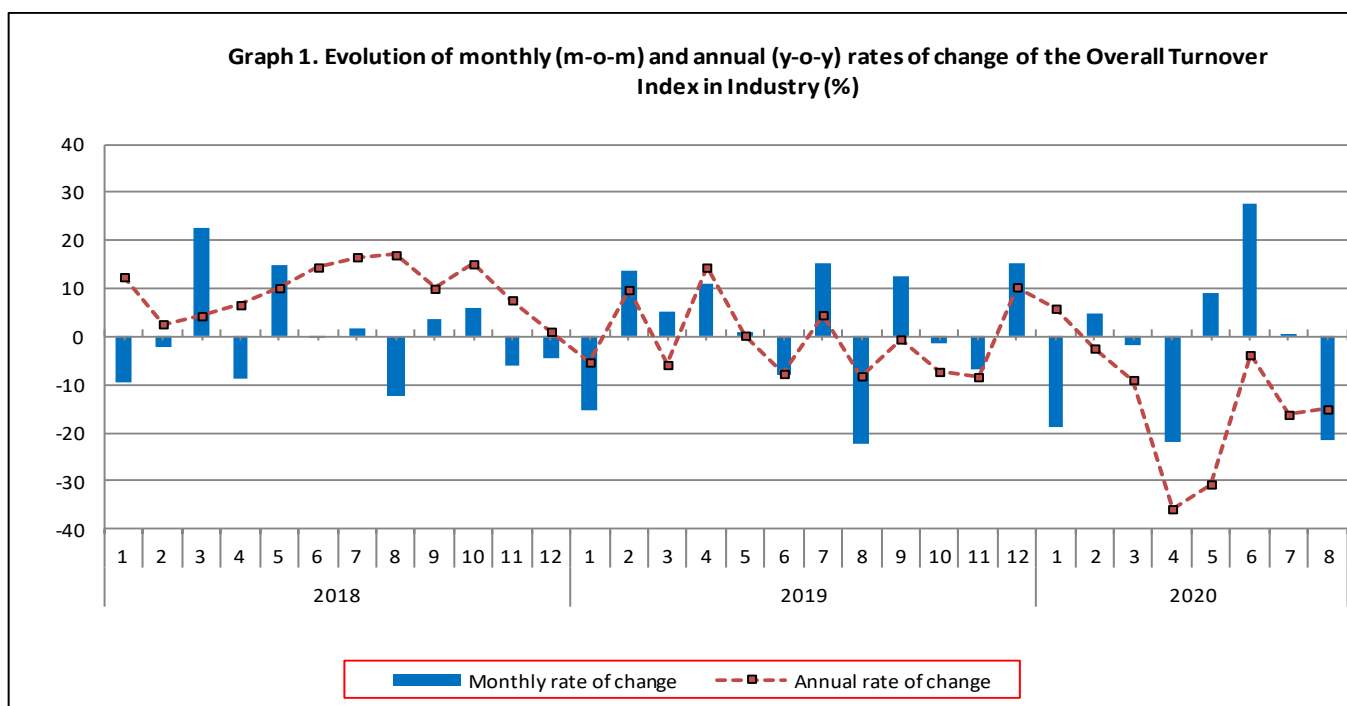
### TURNOVER INDEX IN INDUSTRY: August 2020, y-o-y decrease of 15.1%

The Hellenic Statistical Authority announces the Turnover Index in Industry with base year 2015=100.0 for August 2020, on the basis of provisional data, which is as follows:

The Overall Turnover Index in Industry (both domestic and non-domestic market) in August 2020 recorded a decrease of 15.1% compared with the corresponding index of August 2019. The Overall Turnover Index in Industry in August 2019 decreased by 8.2% compared with the corresponding index in August 2018 (Table 1).

The Overall Turnover Index in Industry in August 2020, compared with July 2020, recorded a decrease of 21.4% (Table 6).

The average Overall Turnover Index in Industry for the 12-month period from September 2019 to August 2020 decreased by 10.1%, compared with the corresponding index of the 12-month period from September 2018 to August 2019. The average Overall Turnover Index in Industry for the 12-month period from September 2018 to August 2019 increased by 2.7% compared with the corresponding index of the 12-month period from September 2017 to August 2018 (Table 13).



#### Information for methodological issues:

Division of Business Statistics  
Section of Manufacture-Construction Indices and Industrial Products  
Head of the Section : Diamantaki Aikaterini  
Tel: +30 213 135 2056  
Fax: +30 213 135 2506  
E-mail: [a.diamantaki@statistics.gr](mailto:a.diamantaki@statistics.gr)

#### Information for data provision:

Tel: +30 213 135 2022, 2308, 2310  
E-mail: [data.dissem@statistics.gr](mailto:data.dissem@statistics.gr)

## Evolution of the Overall Turnover Index in Industry in August 2020

### I. Annual changes of the Overall Turnover Index in Industry: August 2020/August 2019

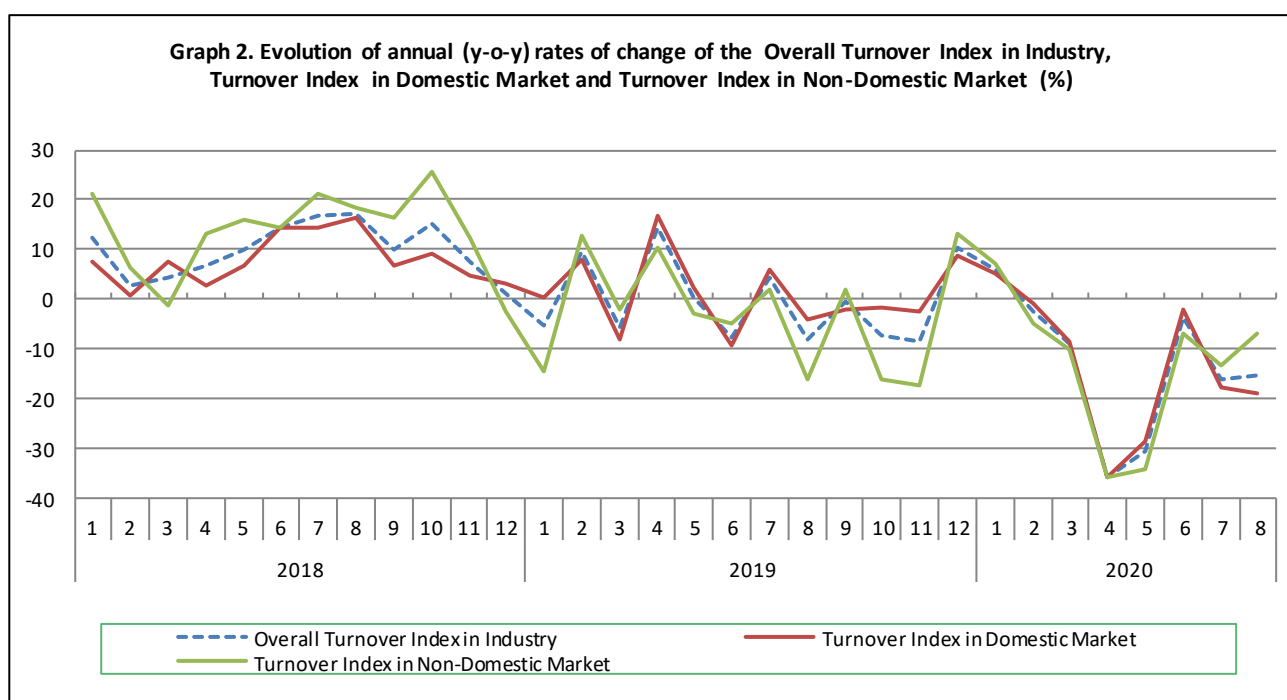
The 15.1% decrease in the Overall Turnover Index in Industry in August 2020, compared with the corresponding index in August 2019, was due to the following:

#### 1. Changes in the sub-indices of the industrial sections (Table 1):

- The Turnover Index in Manufacturing decreased by 15.3%. The decrease was mainly the result of the annual changes of the sub-indices in the following 2-digit divisions: beverages, wearing apparel, coke and refined petroleum products, electrical equipment.
- The Turnover Index in Mining and quarrying increased by 8.9%. The increase was the result of the annual change of the sub-index in the following 2-digit division: mining of metal ores.

#### 2. Changes in the sub-indices in domestic and non-domestic markets:

- The Turnover Index in Industry in domestic market decreased by 18.8% (Table 2).
- The Turnover Index in Industry in non-domestic market decreased by 6.8% (Table 3).



### II. Annual changes of the Turnover Index in Industry in Domestic Market: August 2020/August 2019

The 18.8% decrease of the Turnover Index in Industry in domestic market in August 2020, compared with August 2019, is due to the following annual changes in the sub-indices of the following industrial sections (Table 2):

- The Turnover Index in Manufacturing decreased by 19.0%. The decrease was mainly the result of the annual changes of the sub-indices in the following 2-digit divisions: food, beverages, wearing apparel, coke and refined petroleum products.
- The Turnover Index in Mining and quarrying increased by 13.4%. The increase was mainly the result of the annual changes of the sub-indices in the following 2-digit divisions: mining of metal ores, other mining and quarrying products.

### III. Annual changes of the Turnover Index in Industry in Non-Domestic Market: August 2020/August 2019

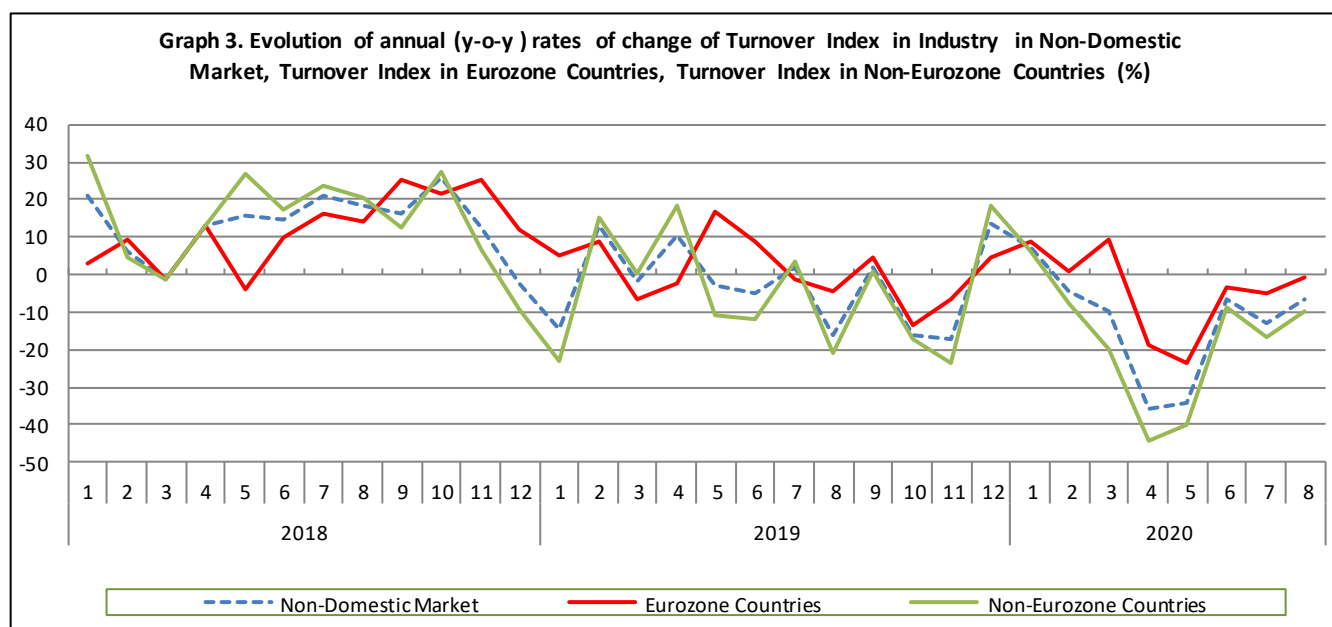
The 6.8% decrease of the Turnover Index in Industry in Non-Domestic market in August 2020, compared with August 2019, was due to the following:

#### 1. Changes in the sub-indices of the industrial sections (Table 3):

- The Turnover Index in Manufacturing decreased by 7.1%. The decrease was mainly the result of the annual changes of the sub-indices in the following 2-digit divisions: wearing apparel, coke and refined petroleum products, other non-metallic mineral products, fabricated metal products, except machinery and equipment.
- The Turnover Index in Mining and quarrying increased by 6.0%. The increase was the result of the annual change of the sub-index in the following 2-digit division: mining of metal ores.

#### 2. Changes in the sub-indices in Eurozone and Non-Eurozone countries:

- The Turnover Index in Industry in Eurozone countries decreased by 0.7% (Table 4).
- The Turnover Index in Industry in non-Eurozone countries decreased by 9.9% (Table 5).



### IV. Monthly changes of the Overall Turnover Index in Industry: August 2020/ July 2020

The 21.4% decrease of the Overall Turnover Index in Industry in August 2020, compared with the corresponding index in July 2020, was due to the following:

#### 1. Changes in the sub-indices of industrial sections (Table 6):

- The Turnover Index in Mining and quarrying decreased by 33.4%.
- The Turnover Index in Manufacturing decreased by 21.2%.

#### 2. Changes in the sub-indices in domestic and non-domestic market:

- The Turnover Index in Industry in domestic market decreased by 20.2% (Table 7).
- The Turnover Index in Industry in non-domestic market decreased by 23.5% (Table 8).

**Table 1. Annual rates of change of the Turnover Index in Industry: Total Market**

Base year: 2015=100.0

Code		Division	Weights	August			Rate of change (%)	
				2020*	2019	2018	2020/2019	2019/2018
OVERALL INDEX				87.26	102.75	111.91	-15.1	-8.2
B	MINING AND QUARRYING		100.00	82.12	75.42	87.14	8.9	-13.4
05-06-09	Mining of coal and lignite - Extraction of crude petroleum and natural gas - Mining support service activities		21.19	19.14	25.52	54.10	-25.0	-52.8
07	Mining of metal ores		17.56	187.59	108.95	117.65	72.2	-7.4
08	Other mining and quarrying products		61.25	73.66	83.07	89.82	-11.3	-7.5
C	MANUFACTURING		100.00	87.33	103.13	112.25	-15.3	-8.1
10	Food		23.39	98.13	105.95	103.62	-7.4	2.2
11	Beverages		3.57	129.21	154.00	155.20	-16.1	-0.8
12	Tobacco products		1.19	121.58	111.40	124.06	9.1	-10.2
13	Textiles		1.28	71.58	76.72	73.16	-6.7	4.9
14	Wearing apparel		1.80	58.75	86.09	92.18	-31.8	-6.6
15	Leather and related products		0.34	31.74	57.33	58.06	-44.6	-1.3
16	Wood and products of wood and cork, except furniture		0.72	75.71	85.62	85.56	-11.6	0.1
17	Paper and paper products		2.44	93.49	104.03	108.34	-10.1	-4.0
18	Printing and reproduction of recorded products		1.17	64.27	68.90	73.26	-6.7	-6.0
19	Coke and refined petroleum products		28.73	75.30	113.91	146.66	-33.9	-22.3
20	Chemicals and chemical products		4.43	84.23	86.84	91.53	-3.0	-5.1
21	Basic pharmaceutical products and pharmaceutical preparations		3.67	90.95	95.50	66.73	-4.8	43.1
22	Rubber and plastic products		3.47	89.21	88.59	88.13	0.7	0.5
23	Other non-metallic mineral products		3.31	86.16	94.96	97.15	-9.3	-2.3
24	Basic metals		7.19	98.51	96.30	116.72	2.3	-17.5
25	Fabricated metal products, except machinery and equipment		4.51	76.73	82.41	79.73	-6.9	3.4
26	Computers, electronic and optical products		0.78	116.59	118.50	107.42	-1.6	10.3
27	Electrical equipment		2.65	91.48	110.30	85.84	-17.1	28.5
28	Machinery and equipment n.e.c.		1.56	83.01	77.94	78.37	6.5	-0.5
29	Motor vehicles, trailers and semi-trailers		0.23	81.28	59.78	107.22	36.0	-44.3
30	Other transport equipment		0.52	41.27	36.05	47.35	14.5	-23.9
31	Furniture		0.97	82.74	74.71	77.30	10.8	-3.4
32	Other manufacturing		0.66	82.59	84.42	83.14	-2.2	1.5
33	Repair and installation of machinery and equipment		1.42	76.58	86.23	74.18	-11.2	16.2
MAIN INDUSTRIAL GROUPINGS								
1	Energy		28.57	74.90	113.27	145.87	-33.9	-22.3
2	Intermediate goods		28.29	90.16	95.65	99.37	-5.7	-3.7
3	Capital goods		7.00	75.98	76.36	76.37	-0.5	0.0
4	Consumer Durables		1.86	87.33	81.35	81.20	7.3	0.2
5	Consumer Non-Durables		34.28	97.46	106.40	102.89	-8.4	3.4

\* Provisional data

Note: The indices and the percentage changes are rounded up to two and one decimal digits, respectively, when published.

**Table 2. Annual rates of change of the Turnover Index in Industry: Domestic Market**

Base year: 2015=100.0

Base year 2015 = 100							
Code	Division	Weights	August			Rate of change (%)	
			2020*	2019	2018	2020/2019	2019/2018
OVERALL INDEX			86.31	106.35	110.83	-18.8	-4.0
B	MINING AND QUARRYING	100.00	59.28	52.27	65.44	13.4	-20.1
05-06-09	Mining of coal and lignite - Extraction of crude petroleum and natural gas - Mining support service activities	31.66	22.63	30.17	63.96	-25.0	-52.8
07	Mining of metal ores	12.83	91.87	86.12	83.46	6.7	3.2
08	Other mining and quarrying products	55.50	72.66	57.06	62.11	27.3	-8.1
C	MANUFACTURING	100.00	86.63	106.97	111.35	-19.0	-3.9
10	Food	28.50	96.00	106.89	103.65	-10.2	3.1
11	Beverages	4.86	130.45	158.83	161.47	-17.9	-1.6
12	Tobacco products	0.51	196.11	196.10	183.09	0.0	7.1
13	Textiles	1.11	57.05	70.25	69.60	-18.8	0.9
14	Wearing apparel	1.77	56.23	84.02	89.08	-33.1	-5.7
15	Leather and related products	0.41	34.21	59.14	60.19	-42.2	-1.7
16	Wood and products of wood and cork, except furniture	0.96	77.93	82.84	85.07	-5.9	-2.6
17	Paper and paper products	3.12	90.20	102.22	107.55	-11.8	-5.0
18	Printing and reproduction of recorded products	1.63	52.57	59.51	72.38	-11.7	-17.8
19	Coke and refined petroleum products	24.90	70.43	130.09	151.39	-45.9	-14.1
20	Chemicals and chemical products	4.90	81.91	84.10	88.84	-2.6	-5.3
21	Basic pharmaceutical products and pharmaceutical preparations	3.85	77.08	73.76	57.85	4.5	27.5
22	Rubber and plastic products	3.31	91.85	87.00	89.30	5.6	-2.6
23	Other non-metallic mineral products	3.31	87.19	89.18	83.89	-2.2	6.3
24	Basic metals	3.49	103.04	91.39	108.25	12.7	-15.6
25	Fabricated metal products, except machinery and equipment	4.25	95.58	97.34	95.43	-1.8	2.0
26	Computers, electronic and optical products	0.40	89.35	85.46	96.96	4.5	-11.9
27	Electrical equipment	2.24	103.13	119.17	85.60	-13.5	39.2
28	Machinery and equipment n.e.c.	1.46	79.38	78.54	80.84	1.1	-2.8
29	Motor vehicles, trailers and semi-trailers	0.27	87.32	60.29	115.42	44.8	-47.8
30	Other transport equipment	0.58	36.89	28.77	44.13	28.2	-34.8
31	Furniture	1.35	76.93	70.23	70.90	9.5	-1.0
32	Other manufacturing	0.88	83.27	86.47	82.72	-3.7	4.5
33	Repair and installation of machinery and equipment	1.92	81.55	82.93	77.12	-1.7	7.5
MAIN INDUSTRIAL GROUPINGS							
1	Energy	24.89	70.00	129.12	150.36	-45.8	-14.1
2	Intermediate goods	25.73	90.91	94.26	93.84	-3.6	0.4
3	Capital goods	7.19	81.46	76.34	80.22	6.7	-4.8
4	Consumer Durables	2.31	80.36	83.51	82.94	-3.8	0.7
5	Consumer Non-Durables	39.88	94.75	106.67	104.26	-11.2	2.3

\* Provisional data

Note: The indices and the percentage changes are rounded up to two and one decimal digits, respectively, when published.

**Table 3. Annual rates of change of the Turnover Index in Industry: Non-Domestic Market**

Base year: 2015=100.0

Code		Division	Weights	August			Rate of change (%)	
				2020*	2019	2018	2020/2019	2019/2018
OVERALL INDEX				89.13	95.68	114.04	-6.8	-16.1
B	MINING AND QUARRYING		100.00	111.92	105.63	115.46	6.0	-8.5
05-06-09	Mining of coal and lignite - Extraction of crude petroleum and natural gas - Mining support service activities		7.53	0.00	0.00	0.00	-	-
07	Mining of metal ores		23.74	255.13	125.05	141.78	104.0	-11.8
08	Other mining and quarrying products		68.74	74.72	110.48	119.02	-32.4	-7.2
C	MANUFACTURING		100.00	88.73	95.50	114.02	-7.1	-16.2
10	Food		13.27	107.18	101.99	103.54	5.1	-1.5
11	Beverages		1.01	117.36	107.90	95.33	8.8	13.2
12	Tobacco products		2.53	91.53	77.25	100.25	18.5	-22.9
13	Textiles		1.61	91.52	85.60	78.05	6.9	9.7
14	Wearing apparel		1.86	63.48	90.01	98.01	-29.5	-8.2
15	Leather and related products		0.19	21.13	49.53	48.92	-57.3	1.2
16	Wood and products of wood and cork, except furniture		0.24	58.14	107.66	89.43	-46.0	20.4
17	Paper and paper products		1.11	111.78	114.07	112.76	-2.0	1.2
18	Printing and reproduction of recorded products		0.26	209.94	185.75	84.24	13.0	120.5
19	Coke and refined petroleum products		36.32	81.91	91.91	140.23	-10.9	-34.5
20	Chemicals and chemical products		3.50	90.66	94.41	98.97	-4.0	-4.6
21	Basic pharmaceutical products and pharmaceutical preparations		3.30	122.99	145.73	87.26	-15.6	67.0
22	Rubber and plastic products		3.79	84.63	91.33	86.10	-7.3	6.1
23	Other non-metallic mineral products		3.31	84.11	106.42	123.44	-21.0	-13.8
24	Basic metals		14.54	96.35	98.63	120.75	-2.3	-18.3
25	Fabricated metal products, except machinery and equipment		5.03	45.16	57.40	53.41	-21.3	7.5
26	Computers, electronic and optical products		1.52	130.76	135.69	112.87	-3.6	20.2
27	Electrical equipment		3.44	76.44	98.85	86.16	-22.7	14.7
28	Machinery and equipment n.e.c.		1.76	88.97	76.96	74.31	15.6	3.6
29	Motor vehicles, trailers and semi-trailers		0.14	57.77	57.76	75.29	0.0	-23.3
30	Other transport equipment		0.40	53.75	56.80	56.55	-5.4	0.4
31	Furniture		0.21	156.78	131.77	158.84	19.0	-17.0
32	Other manufacturing		0.22	77.31	68.49	86.39	12.9	-20.7
33	Repair and installation of machinery and equipment		0.43	32.93	115.16	48.30	-71.4	138.4
MAIN INDUSTRIAL GROUPINGS								
1	Energy		35.82	81.61	91.58	139.72	-10.9	-34.5
2	Intermediate goods		33.33	89.03	97.77	107.78	-8.9	-9.3
3	Capital goods		6.62	64.25	76.41	68.14	-15.9	12.1
4	Consumer Durables		0.98	119.77	71.30	73.09	68.0	-2.4
5	Consumer Non-Durables		23.25	106.63	105.49	98.26	1.1	7.4

\* Provisional data

Note: The indices and the percentage changes are rounded up to two and one decimal digits, respectively, when published.

**Table 4. Annual rates of change of the Turnover Index in Industry: Eurozone Countries**

Base year: 2015=100.0

CodeSections and main groupings		August			Rate of change (%)	
		2020*	2019	2018	2020/2019	2019/2018
OVERALL INDEX		91.13	91.73	96.28	-0.7	-4.7
INDUSTRIAL SECTIONS						
B	MINING AND QUARRYING	57.04	117.37	115.72	-51.4	1.4
C	MANUFACTURING	91.81	91.22	95.89	0.6	-4.9
MAIN INDUSTRIAL GROUPINGS						
1	Energy	86.65	47.77	72.93	81.4	-34.5
2	Intermediate goods	89.82	104.57	105.31	-14.1	-0.7
3	Capital goods	57.70	83.80	96.98	-31.1	-13.6
4	Consumer Durables	120.56	117.23	117.89	2.8	-0.6
5	Consumer Non-Durables	99.61	108.00	101.37	-7.8	6.5

\* Provisional data

**Table 5. Annual rates of change of the Turnover Index in Industry: Non-Eurozone Countries**

Base year: 2015=100.0

CodeSections and main groupings		August			Rate of change (%)	
		2020*	2019	2018	2020/2019	2019/2018
OVERALL INDEX		88.06	97.77	123.49	-9.9	-20.8
INDUSTRIAL SECTIONS						
B	MINING AND QUARRYING	147.94	97.92	115.29	51.1	-15.1
C	MANUFACTURING	87.09	97.77	123.62	-10.9	-20.9
MAIN INDUSTRIAL GROUPINGS						
1	Energy	80.16	104.20	158.96	-23.1	-34.4
2	Intermediate goods	88.51	93.34	109.39	-5.2	-14.7
3	Capital goods	66.47	73.90	58.36	-10.1	26.6
4	Consumer Durables	119.23	39.59	42.16	201.2	-6.1
5	Consumer Non-Durables	113.47	103.05	95.23	10.1	8.2

\* Provisional data

*Note: The indices and the percentage changes are rounded up to two and one decimal digits, respectively, when published.*

**Table 6. Monthly rate of change of the Turnover Index in Industry: Total Market**

Base year: 2015=100.0

Code	Sections and main groupings	August 2020*	July 2020**	Rate of change (%) Aug. 2020/July 2020
<b>OVERALL INDEX</b>		<b>87.26</b>	<b>111.02</b>	<b>-21.4</b>
<b>INDUSTRIAL SECTIONS</b>				
<b>B</b>	MINING AND QUARRYING	82.12	123.34	-33.4
<b>C</b>	MANUFACTURING	87.33	110.86	-21.2
<b>MAIN INDUSTRIAL GROUPINGS</b>				
<b>1</b>	Energy	74.90	76.86	-2.5
<b>2</b>	Intermediate goods	90.16	123.64	-27.1
<b>3</b>	Capital goods	75.98	117.63	-35.4
<b>4</b>	Consumer Durables	87.33	133.96	-34.8
<b>5</b>	Consumer Non-Durables	97.46	126.48	-22.9

**Table 7. Monthly rate of change of the Turnover Index in Industry: Domestic Market**

Base year: 2015=100.0

Code	Sections and main groupings	August 2020*	July 2020**	Rate of change (%) Aug. 2020/July 2020
<b>OVERALL INDEX</b>		<b>86.31</b>	<b>108.22</b>	<b>-20.2</b>
<b>INDUSTRIAL SECTIONS</b>				
<b>B</b>	MINING AND QUARRYING	59.28	84.66	-30.0
<b>C</b>	MANUFACTURING	86.63	108.49	-20.2
<b>MAIN INDUSTRIAL GROUPINGS</b>				
<b>1</b>	Energy	70.00	62.27	12.4
<b>2</b>	Intermediate goods	90.91	129.24	-29.7
<b>3</b>	Capital goods	81.46	122.91	-33.7
<b>4</b>	Consumer Durables	80.36	121.54	-33.9
<b>5</b>	Consumer Non-Durables	94.75	119.90	-21.0

**Table 8. Monthly rate of change of the Turnover Index in Industry: Non-Domestic Market**

Base year: 2015=100.0

Code	Sections and main groupings	August 2020*	July 2020**	Rate of change (%) Aug. 2020/July 2020
<b>OVERALL INDEX</b>		<b>89.13</b>	<b>116.55</b>	<b>-23.5</b>
<b>INDUSTRIAL SECTIONS</b>				
<b>B</b>	MINING AND QUARRYING	111.92	173.82	-35.6
<b>C</b>	MANUFACTURING	88.73	115.55	-23.2
<b>MAIN INDUSTRIAL GROUPINGS</b>				
<b>1</b>	Energy	81.61	96.82	-15.7
<b>2</b>	Intermediate goods	89.03	115.14	-22.7
<b>3</b>	Capital goods	64.25	106.34	-39.6
<b>4</b>	Consumer Durables	119.77	191.77	-37.5
<b>5</b>	Consumer Non-Durables	106.63	148.72	-28.3

\* Provisional data    \*\* Revised data

Note: The indices and the percentage changes are rounded up to two and one decimal digits, respectively, when published.



**Table 9. Monthly rate of change of the Turnover Index in Industry: Eurozone Countries**

Base year: 2015=100.0

Code	Sections and main groupings	August 2020*	July 2020**	Rate of change (%) Aug. 2020/July 2020
<b>OVERALL INDEX</b>		<b>91.13</b>	<b>121.42</b>	<b>-24.9</b>
<b>INDUSTRIAL SECTIONS</b>				
<b>B</b>	MINING AND QUARRYING	57.04	177.97	-67.9
<b>C</b>	MANUFACTURING	91.81	120.29	-23.7
<b>MAIN INDUSTRIAL GROUPINGS</b>				
<b>1</b>	Energy	86.65	67.35	28.7
<b>2</b>	Intermediate goods	89.82	118.40	-24.1
<b>3</b>	Capital goods	57.70	132.83	-56.6
<b>4</b>	Consumer Durables	120.56	269.89	-55.3
<b>5</b>	Consumer Non-Durables	99.61	155.81	-36.1

\* Provisional data \*\* Revised data

**Table 10. Monthly rate of change of the Turnover Index in Industry: Non-Eurozone Countries**

Base year: 2015=100.0

Code	Sections and main groupings	August 2020*	July 2020**	Rate of change (%) Aug. 2020/July 2020
<b>OVERALL INDEX</b>		<b>88.06</b>	<b>113.96</b>	<b>-22.7</b>
<b>INDUSTRIAL SECTIONS</b>				
<b>B</b>	MINING AND QUARRYING	147.94	171.10	-13.5
<b>C</b>	MANUFACTURING	87.09	113.04	-23.0
<b>MAIN INDUSTRIAL GROUPINGS</b>				
<b>1</b>	Energy	80.16	105.31	-23.9
<b>2</b>	Intermediate goods	88.51	113.01	-21.7
<b>3</b>	Capital goods	66.47	97.36	-31.7
<b>4</b>	Consumer Durables	119.23	137.82	-13.5
<b>5</b>	Consumer Non-Durables	113.47	141.82	-20.0

\* Provisional data \*\* Revised data

*Note: The indices and the percentage changes are rounded up to two and one decimal digits, respectively, when published.*

**Table 11. Evolution of the Turnover Index in Industry (y-o-y changes): Total Market**

Base year: 2015=100.0

Year and month		Overall Index (Total Market)		Turnover Index in Industry in Domestic Market		Turnover Index in Industry in Non-Domestic Market	
		Index	Annual rate of change (%)	Index	Annual rate of change (%)	Index	Annual rate of change (%)
2019:	8	102.75	-8.2	106.35	-4.0	95.68	-16.1
	9	115.49	-0.5	110.45	-1.9	125.42	1.9
	10	113.86	-7.3	111.34	-1.7	118.84	-16.1
	11	105.94	-8.4	104.32	-2.6	109.13	-17.5
	12	121.97	10.3	117.67	8.7	130.44	13.3
2020*:	1	99.23	5.9	96.97	5.2	103.67	7.1
	2	103.88	-2.4	98.33	-1.0	114.82	-4.7
	3	102.07	-9.0	97.28	-8.4	111.50	-10.0
	4	79.75	-35.8	74.87	-35.8	89.36	-35.8
	5	86.83	-30.7	85.26	-28.7	89.94	-34.2
	6	110.71	-3.8	108.97	-2.1	114.12	-6.7
	7	111.02	-16.2	108.22	-17.8	116.55	-13.1
	8	87.26	-15.1	86.31	-18.8	89.13	-6.8

\*Provisional data

**Table 12. Evolution of the Turnover Index in Industry (y-o-y changes): Non-Domestic Market**

Base year: 2015=100.0

Year and month		Overall Index (Non-Domestic Market)		Turnover Index in Industry in Eurozone Countries		Turnover Index in Industry in Non-Eurozone Countries	
		Index	Annual rate of change (%)	Index	Annual rate of change (%)	Index	Annual rate of change (%)
2019:	8	95.68	-16.1	91.73	-4.7	97.77	-20.8
	9	125.42	1.9	120.82	4.3	127.87	0.7
	10	118.84	-16.1	114.26	-13.3	121.27	-17.4
	11	109.13	-17.5	128.84	-6.5	98.66	-23.7
	12	130.44	13.3	123.44	4.5	134.16	18.2
2020*:	1	103.67	7.1	116.25	8.6	96.98	6.2
	2	114.82	-4.7	119.61	0.8	112.27	-7.5
	3	111.50	-10.0	132.67	9.5	100.25	-20.0
	4	89.36	-35.8	107.25	-18.7	79.86	-44.2
	5	89.94	-34.2	105.58	-23.6	81.62	-39.9
	6	114.12	-6.7	133.04	-3.5	104.06	-8.8
	7	116.55	-13.1	121.42	-5.3	113.96	-17.0
	8	89.13	-6.8	91.13	-0.7	88.06	-9.9

\*Provisional data

Note: The indices and the percentage changes are rounded up to two and one decimal digits, respectively, when published.

**Table 13. Average indices and rates of change (%) of the 12-month periods of Turnover Index in Industry: Total Market**  
**Base year: 2015=100.0**

Code	Division	Average Indices of 12-month periods			Rate of change (%) 2020/2019	Rate of change (%) 2019/2018
		Sept. 2019- Aug. 2020*	Sept. 2018- Aug. 2019	Sept. 2017- Aug. 2018		
	<b>OVERALL INDEX</b>	<b>103.17</b>	<b>114.76</b>	<b>111.73</b>	<b>-10.1</b>	<b>2.7</b>
<b>B</b>	<b>MINING AND QUARRYING</b>	<b>100.17</b>	<b>107.09</b>	<b>111.07</b>	<b>-6.5</b>	<b>-3.6</b>
<b>05-06-09</b>	Mining of coal and lignite - Extraction of crude petroleum and natural gas - Mining support service activities	38.63	99.70	96.28	-61.3	3.6
<b>07</b>	Mining of metal ores	184.84	140.34	148.64	31.7	-5.6
<b>08</b>	Other mining and quarrying products	97.18	100.12	105.42	-2.9	-5.0
<b>C</b>	<b>MANUFACTURING</b>	<b>103.21</b>	<b>114.86</b>	<b>111.74</b>	<b>-10.1</b>	<b>2.8</b>
<b>10</b>	Food	102.60	103.01	101.59	-0.4	1.4
<b>11</b>	Beverages	100.87	115.71	113.96	-12.8	1.5
<b>12</b>	Tobacco products	132.01	126.13	104.71	4.7	20.5
<b>13</b>	Textiles	97.93	106.38	106.96	-8.0	-0.5
<b>14</b>	Wearing apparel	76.32	94.55	98.17	-19.3	-3.7
<b>15</b>	Leather and related products	69.71	87.23	93.12	-20.1	-6.3
<b>16</b>	Wood and products of wood and cork, except furniture	101.85	105.10	104.33	-3.1	0.7
<b>17</b>	Paper and paper products	113.40	113.32	111.99	0.1	1.2
<b>18</b>	Printing and reproduction of recorded products	90.82	96.16	96.01	-5.6	0.2
<b>19</b>	Coke and refined petroleum products	91.07	124.67	122.78	-27.0	1.5
<b>20</b>	Chemicals and chemical products	116.68	115.36	108.82	1.1	6.0
<b>21</b>	Basic pharmaceutical products and pharmaceutical preparations	155.32	136.20	111.94	14.0	21.7
<b>22</b>	Rubber and plastic products	107.99	104.99	102.75	2.9	2.2
<b>23</b>	Other non-metallic mineral products	101.69	110.79	106.89	-8.2	3.6
<b>24</b>	Basic metals	117.46	132.89	134.44	-11.6	-1.2
<b>25</b>	Fabricated metal products, except machinery and equipment	95.92	101.00	98.52	-5.0	2.5
<b>26</b>	Computers, electronic and optical products	164.63	145.81	119.18	12.9	22.3
<b>27</b>	Electrical equipment	121.46	123.42	112.31	-1.6	9.9
<b>28</b>	Machinery and equipment n.e.c.	104.21	107.08	105.76	-2.7	1.2
<b>29</b>	Motor vehicles, trailers and semi-trailers	112.96	101.68	90.33	11.1	12.6
<b>30</b>	Other transport equipment	59.41	69.17	71.99	-14.1	-3.9
<b>31</b>	Furniture	104.91	113.86	113.65	-7.9	0.2
<b>32</b>	Other manufacturing	92.82	102.53	99.70	-9.5	2.8
<b>33</b>	Repair and installation of machinery and equipment	96.27	93.89	90.19	2.5	4.1
	<b>MAIN INDUSTRIAL GROUPINGS</b>					
<b>1</b>	Energy	90.74	124.54	122.59	-27.1	1.6
<b>2</b>	Intermediate goods	110.05	115.65	113.38	-4.8	2.0
<b>3</b>	Capital goods	102.68	102.87	97.02	-0.2	6.0
<b>4</b>	Consumer Durables	99.88	104.73	107.66	-4.6	-2.7
<b>5</b>	Consumer Non-Durables	108.12	108.85	104.53	-0.7	4.1

\*Provisional data

Note: The indices and the percentage changes are rounded up to two and one decimal digits, respectively, when published.

## METHODOLOGICAL NOTES

<b>Generally</b>	The Industrial Turnover Index is an indicator of an enterprise's business cycle showing the monthly evolution of the market of goods and services in industry. The first compilation of the Turnover Index was completed by the Hellenic Statistical Authority in 2006, with base year 2000=100.0 and is compiled from 2000 onwards.
<b>Purpose of the index</b>	The purpose of this index is to measure the monthly activity of the industrial sector in terms of value. Turnover comprises the totals invoiced by the observation units during the reference period and corresponds to the market sales of goods or services supplied to third parties. The purposes and the characteristics of the Turnover Index apply, as well, to the indices for the distinction between domestic and non-domestic turnover.
<b>Legal Framework</b>	The compilation and publication of the Turnover Index is based on the framework of the implementation of Council Regulation (EC) No 1165/1998 concerning short-term statistics (STS-R), as well as Regulation (EC) No 1158/2005 of the European Parliament and of the Council amending Council Regulation (EC) No 1165/1998. Furthermore, this index is governed by Regulation (EC) No 1893/2006 of the European Parliament and of the Council, by Commission Regulation (EC) No 656/2007 and by Regulation (EC) No 451/2008 of the Council.
<b>Reference period</b>	Month.
<b>Base year</b>	2015=100.0.
<b>Revision</b>	The latest revision of the Turnover Index in Industry (base year 2015=100.0) took place in the framework of Council Regulation (EC) No 1165/1998 concerning short-term statistics. In accordance with this regulation the index is revised every five years, in years ending in 0 or 5.
<b>Statistical classifications</b>	At the level of classes of economic activities, the statistical classification of economic activities NACE Rev. 2 of EU was used (Regulation No 1893/2006), while at the level of main industrial groupings, the allocation of two-digit and three-digit NACE Rev. 2 headings to categories of aggregate classification was used, in accordance with Commission Regulation No 656/2007.
<b>Geographical coverage</b>	The index covers the whole Country.
<b>Coverage of economic activities</b>	The Turnover Index in Industry is compiled for all activities listed in Sections B (mining and quarrying) and C (manufacturing) of the NACE Rev. 2 statistical classification.
<b>Computation of the Index</b>	The Turnover Index in Industry is a fixed base index. This index is calculated at a first stage at the four-digit level of economic activity and subsequently, with the implementation of appropriate weighting coefficients, the index is calculated at higher levels (three-level and two-level of economic activity) as well as at the level of Main Industrial Groupings (MIGs).
<b>Data collection, processing and imputation in the context of the COVID-19 pandemic</b>	The compilation of the indices was mainly based on data collected by the enterprises (via web-based application, email), as well as data from administrative sources. For August 2020 there was no significant change in the data collection compared to previous reference months.
<b>Publication of data</b>	The Turnover Index in Industry (2015=100.0) is released since August 2019 with June 2019 as first reference month. Data with base year 2015=100.0 are available from January 2000 onwards.
<b>References</b>	More information about the methodology concerning the compilation and calculation of the index and for the time series is available on the website of the Hellenic Statistical Authority (ELSTAT) ( <a href="http://www.statistics.gr/en/statistics/-/publication/DKT24/">http://www.statistics.gr/en/statistics/-/publication/DKT24/</a> ).