



PRESS RELEASE

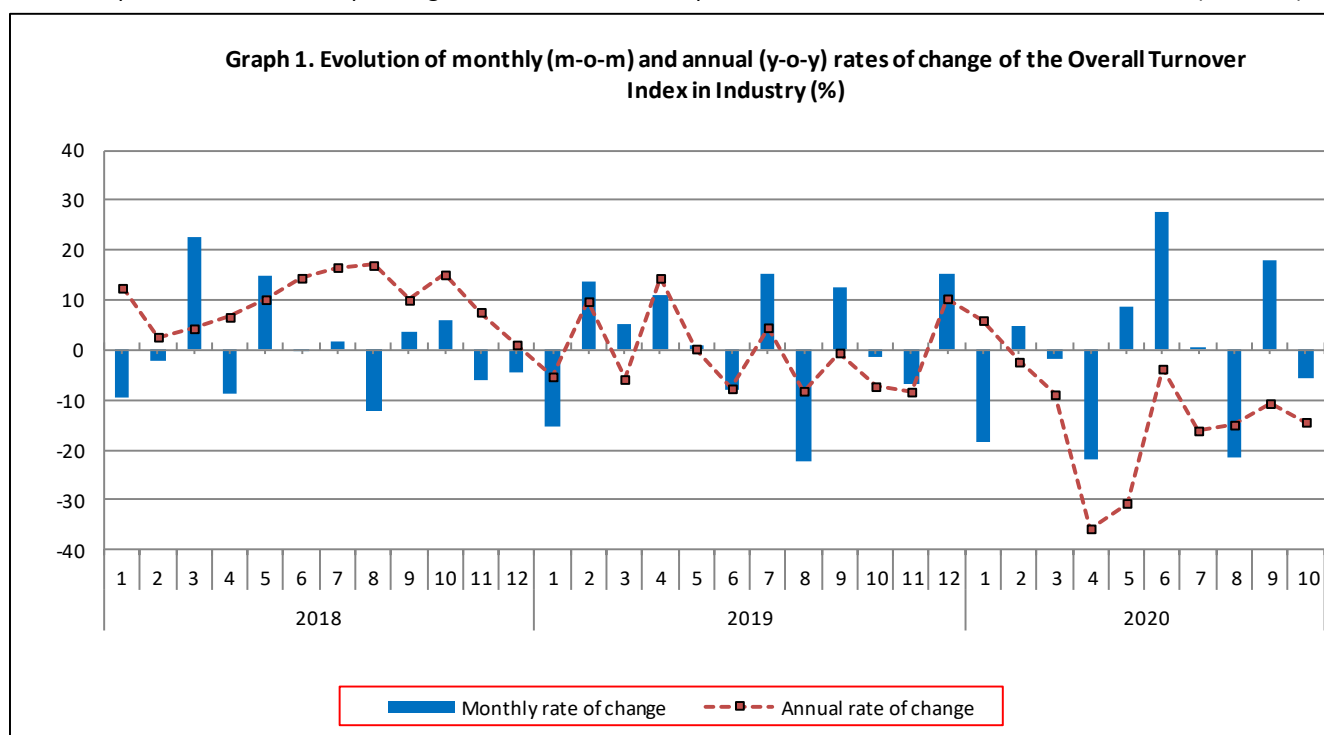
TURNOVER INDEX IN INDUSTRY: October 2020, y-o-y decrease of 14.4%

The Hellenic Statistical Authority announces the Turnover Index in Industry with base year 2015=100.0 for October 2020, on the basis of provisional data, which is as follows:

The Overall Turnover Index in Industry (both domestic and non-domestic market) in October 2020 recorded a decrease of 14.4% compared with the corresponding index of October 2019. The Overall Turnover Index in Industry in October 2019 decreased by 7.3% compared with the corresponding index in October 2018 (Table 1).

The Overall Turnover Index in Industry in October 2020, compared with September 2020, recorded a decrease of 5.5% (Table 6).

The average Overall Turnover Index in Industry for the 12-month period from November 2019 to October 2020 decreased by 11.5%, compared with the corresponding index of the 12-month period from November 2018 to October 2019. The average Overall Turnover Index in Industry for the 12-month period from November 2018 to October 2019 increased by 0.01% compared with the corresponding index of the 12-month period from November 2017 to October 2018 (Table 13).



Information for methodological issues:

Division of Business Statistics
Section of Manufacture-Construction Indices and Industrial Products
Head of the Section : Diamantaki Aikaterini
Tel: +30 213 135 2056
Fax: +30 213 135 2506
E-mail: a.diamantaki@statistics.gr

Information for data provision:

Tel: +30 213 135 2022, 2308, 2310
E-mail: data.dissem@statistics.gr

Evolution of the Overall Turnover Index in Industry in October 2020

I. Annual changes of the Overall Turnover Index in Industry: October 2020/October 2019

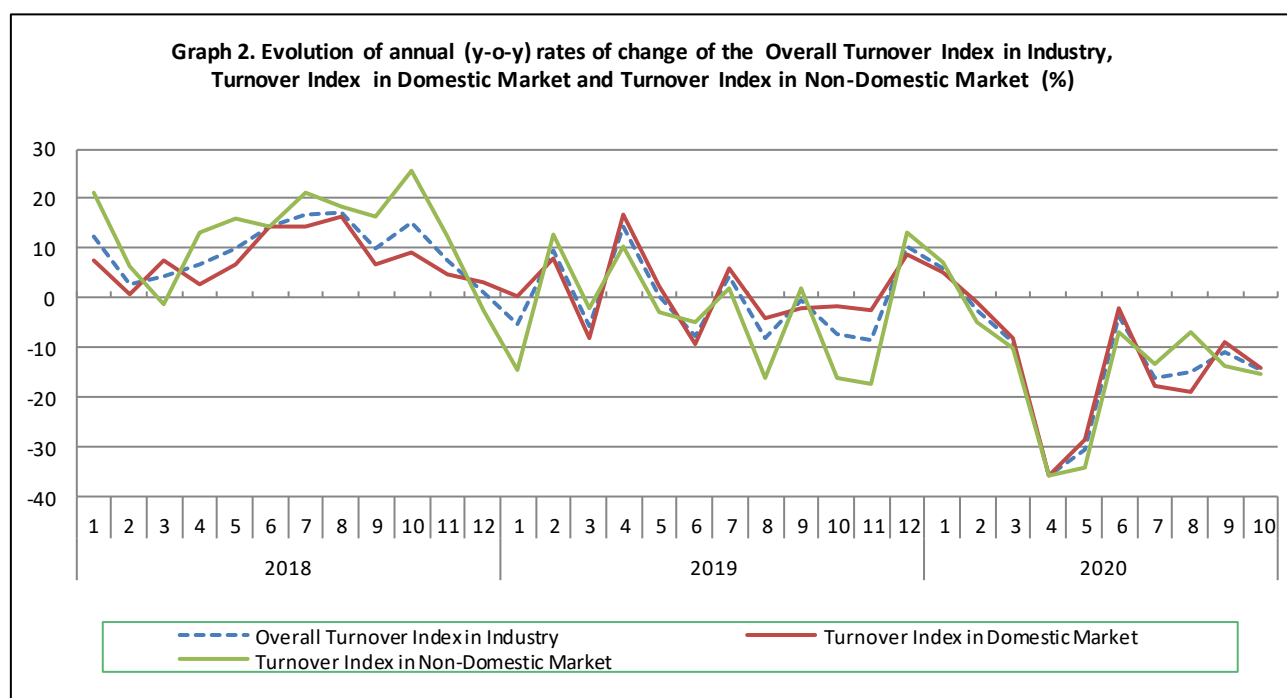
The 14.4% decrease in the Overall Turnover Index in Industry in October 2020, compared with the corresponding index in October 2019, was due to the following:

1. Changes in the sub-indices of the industrial sections (Table 1):

- The Turnover Index in Mining and quarrying decreased by 1.3%. The decrease was mainly the result of the annual change of the sub-index in the following 2-digit divisions: mining of coal and lignite - extraction of crude petroleum and natural gas - mining support service activities.
- The Turnover Index in Manufacturing decreased by 14.6%. The decrease was mainly the result of the annual changes of the sub-indices in the following 2-digit divisions: tobacco products, wearing apparel, coke and refined petroleum products.

2. Changes in the sub-indices in domestic and non-domestic markets:

- The Turnover Index in Industry in domestic market decreased by 14.0% (Table 2).
- The Turnover Index in Industry in non-domestic market decreased by 15.1% (Table 3).



II. Annual changes of the Turnover Index in Industry in Domestic Market: October 2020/October 2019

The 14.0% decrease of the Turnover Index in Industry in domestic market in October 2020, compared with October 2019, is due to the following annual changes in the sub-indices of the following industrial sections (Table 2):

- The Turnover Index in Mining and quarrying decreased by 5.2%. The decrease was mainly the result of the annual change of the sub-index in the following 2-digit divisions: mining of coal and lignite - extraction of crude petroleum and natural gas - mining support service activities.
- The Turnover Index in Manufacturing decreased by 14.1%. The decrease was mainly the result of the annual changes of the sub-indices in the following 2-digit divisions: textiles, wearing apparel, coke and refined petroleum products.

III. Annual changes of the Turnover Index in Industry in Non-Domestic Market: October 2020/October 2019

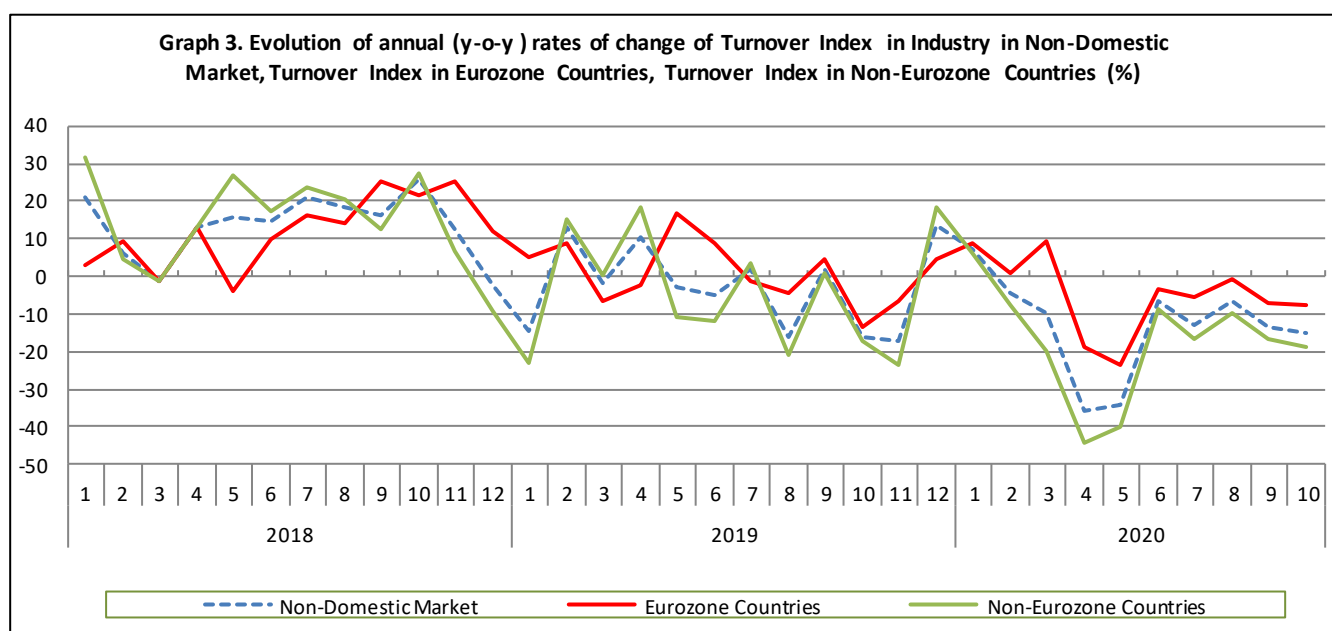
The 15.1% decrease of the Turnover Index in Industry in Non-Domestic market in October 2020, compared with October 2019, was due to the following:

1. Changes in the sub-indices of the industrial sections (Table 3):

- The Turnover Index in Manufacturing decreased by 15.5%. The decrease was mainly the result of the annual changes of the sub-indices in the following 2-digit divisions: tobacco products, wearing apparel, coke and refined petroleum products, fabricated metal products.
- The Turnover Index in Mining and quarrying increased by 1.5%. The increase was mainly the result of the annual change of the sub-indices in the following 2-digit divisions: mining of metal ores, other mining and quarrying products.

2. Changes in the sub-indices in Eurozone and Non-Eurozone countries:

- The Turnover Index in Industry in Eurozone countries decreased by 7.5% (Table 4).
- The Turnover Index in Industry in non-Eurozone countries decreased by 18.9% (Table 5).



IV. Monthly changes of the Overall Turnover Index in Industry: October 2020/ September 2020

The 5.5% decrease of the Overall Turnover Index in Industry in October 2020, compared with the corresponding index in September 2020, was due to the following:

1. Changes in the sub-indices of industrial sections (Table 6):

- The Turnover Index in Mining and quarrying decreased by 1.3%.
- The Turnover Index in Manufacturing decreased by 5.6%.

2. Changes in the sub-indices in domestic and non-domestic market:

- The Turnover Index in Industry in domestic market decreased by 4.7% (Table 7).
- The Turnover Index in Industry in non-domestic market decreased by 7.0% (Table 8).

Table 1. Annual rates of change of the Turnover Index in Industry: Total Market

Base year: 2015=100.0

Code		Division	Weights	October			Rate of change (%)	
				2020*	2019	2018	2020/2019	2019/2018
OVERALL INDEX				97.46	113.86	122.79	-14.4	-7.3
B	MINING AND QUARRYING		100.00	107.85	109.22	134.21	-1.3	-18.6
05-06-09	Mining of coal and lignite - Extraction of crude petroleum and natural gas - Mining support service activities		21.19	14.63	112.60	210.90	-87.0	-46.6
07	Mining of metal ores		17.56	197.21	110.09	133.33	79.1	-17.4
08	Other mining and quarrying products		61.25	114.48	107.81	107.93	6.2	-0.1
C	MANUFACTURING		100.00	97.32	113.93	122.63	-14.6	-7.1
10	Food		23.39	107.96	107.38	107.76	0.5	-0.3
11	Beverages		3.57	87.34	88.33	82.82	-1.1	6.7
12	Tobacco products		1.19	132.69	152.57	119.07	-13.0	28.1
13	Textiles		1.28	106.44	112.01	107.78	-5.0	3.9
14	Wearing apparel		1.80	77.45	103.88	107.05	-25.4	-3.0
15	Leather and related products		0.34	64.50	108.32	102.92	-40.5	5.2
16	Wood and products of wood and cork, except furniture		0.72	113.12	112.50	106.57	0.5	5.6
17	Paper and paper products		2.44	113.97	117.62	115.98	-3.1	1.4
18	Printing and reproduction of recorded products		1.17	89.48	104.50	100.19	-14.4	4.3
19	Coke and refined petroleum products		28.73	54.36	111.89	146.71	-51.4	-23.7
20	Chemicals and chemical products		4.43	120.30	116.89	110.50	2.9	5.8
21	Basic pharmaceutical products and pharmaceutical preparations		3.67	192.73	155.77	128.36	23.7	21.4
22	Rubber and plastic products		3.47	112.20	115.23	107.91	-2.6	6.8
23	Other non-metallic mineral products		3.31	119.74	120.74	121.10	-0.8	-0.3
24	Basic metals		7.19	126.86	131.10	152.12	-3.2	-13.8
25	Fabricated metal products, except machinery and equipment		4.51	103.21	105.38	103.65	-2.1	1.7
26	Computers, electronic and optical products		0.78	158.35	187.10	150.26	-15.4	24.5
27	Electrical equipment		2.65	127.57	123.03	109.47	3.7	12.4
28	Machinery and equipment n.e.c.		1.56	115.71	108.68	113.45	6.5	-4.2
29	Motor vehicles, trailers and semi-trailers		0.23	105.42	121.41	84.63	-13.2	43.5
30	Other transport equipment		0.52	68.88	44.47	70.21	54.9	-36.7
31	Furniture		0.97	116.58	114.14	113.83	2.1	0.3
32	Other manufacturing		0.66	91.65	112.05	103.56	-18.2	8.2
33	Repair and installation of machinery and equipment		1.42	94.82	90.25	92.45	5.1	-2.4
MAIN INDUSTRIAL GROUPINGS								
1	Energy		28.57	54.08	112.13	147.50	-51.8	-24.0
2	Intermediate goods		28.29	118.81	117.74	121.51	0.9	-3.1
3	Capital goods		7.00	108.29	110.19	106.48	-1.7	3.5
4	Consumer Durables		1.86	102.19	108.67	102.28	-6.0	6.2
5	Consumer Non-Durables		34.28	113.53	113.14	107.69	0.3	5.1

* Provisional data

Note: The indices and the percentage changes are rounded up to two and one decimal digits, respectively, when published.

Table 2. Annual rates of change of the Turnover Index in Industry: Domestic Market

Base year: 2015=100.0

Code		Division	Weights	October			Rate of change (%)	
				2020*	2019	2018	2020/2019	2019/2018
OVERALL INDEX				95.72	111.34	113.22	-14.0	-1.7
B	MINING AND QUARRYING		100.00	74.92	79.01	88.65	-5.2	-10.9
05-06-09	Mining of coal and lignite - Extraction of crude petroleum and natural gas - Mining support service activities		31.66	16.99	36.53	70.52	-53.5	-48.2
07	Mining of metal ores		12.83	109.11	102.78	106.84	6.2	-3.8
08	Other mining and quarrying products		55.50	100.05	97.74	94.79	2.4	3.1
C	MANUFACTURING		100.00	95.96	111.71	113.51	-14.1	-1.6
10	Food		28.50	102.21	105.45	106.70	-3.1	-1.2
11	Beverages		4.86	86.57	87.26	80.62	-0.8	8.2
12	Tobacco products		0.51	185.30	197.99	139.55	-6.4	41.9
13	Textiles		1.11	97.56	114.70	113.33	-14.9	1.2
14	Wearing apparel		1.77	73.75	99.44	103.21	-25.8	-3.7
15	Leather and related products		0.41	72.31	110.46	109.67	-34.5	0.7
16	Wood and products of wood and cork, except furniture		0.96	108.13	107.41	103.93	0.7	3.4
17	Paper and paper products		3.12	110.34	114.00	114.84	-3.2	-0.7
18	Printing and reproduction of recorded products		1.63	76.76	89.75	99.03	-14.5	-9.4
19	Coke and refined petroleum products		24.90	54.10	115.79	125.10	-53.3	-7.4
20	Chemicals and chemical products		4.90	117.07	113.68	108.68	3.0	4.6
21	Basic pharmaceutical products and pharmaceutical preparations		3.85	167.02	129.69	111.12	28.8	16.7
22	Rubber and plastic products		3.31	107.93	112.89	111.15	-4.4	1.6
23	Other non-metallic mineral products		3.31	126.90	121.48	118.88	4.5	2.2
24	Basic metals		3.49	144.87	149.19	160.15	-2.9	-6.8
25	Fabricated metal products, except machinery and equipment		4.25	117.35	114.84	123.11	2.2	-6.7
26	Computers, electronic and optical products		0.40	102.77	130.93	112.62	-21.5	16.3
27	Electrical equipment		2.24	120.75	121.47	122.28	-0.6	-0.7
28	Machinery and equipment n.e.c.		1.46	127.22	113.58	109.72	12.0	3.5
29	Motor vehicles, trailers and semi-trailers		0.27	99.67	126.00	82.57	-20.9	52.6
30	Other transport equipment		0.58	60.20	33.43	60.58	80.1	-44.8
31	Furniture		1.35	110.27	105.94	108.46	4.1	-2.3
32	Other manufacturing		0.88	87.94	106.78	96.44	-17.6	10.7
33	Repair and installation of machinery and equipment		1.92	100.45	93.31	96.02	7.7	-2.8
MAIN INDUSTRIAL GROUPINGS								
1	Energy		24.89	53.76	115.07	124.48	-53.3	-7.6
2	Intermediate goods		25.73	116.96	115.76	118.72	1.0	-2.5
3	Capital goods		7.19	114.35	109.88	110.90	4.1	-0.9
4	Consumer Durables		2.31	94.21	100.19	98.44	-6.0	1.8
5	Consumer Non-Durables		39.88	104.94	107.06	103.93	-2.0	3.0

* Provisional data

Note: The indices and the percentage changes are rounded up to two and one decimal digits, respectively, when published.

Table 3. Annual rates of change of the Turnover Index in Industry: Non-Domestic Market

Base year: 2015=100.0

Code	Division	Weights	October			Rate of change (%)	
			2020*	2019	2018	2020/2019	2019/2018
OVERALL INDEX			100.89	118.84	141.62	-15.1	-16.1
B	MINING AND QUARRYING	100.00	150.83	148.66	193.66	1.5	-23.2
05-06-09	Mining of coal and lignite - Extraction of crude petroleum and natural gas - Mining support service activities	7.53	1.67	530.17	981.52	-99.7	-46.0
07	Mining of metal ores	23.74	259.38	115.25	152.02	125.1	-24.2
08	Other mining and quarrying products	68.74	129.69	118.42	121.77	9.5	-2.8
C	MANUFACTURING	100.00	100.02	118.32	140.71	-15.5	-15.9
10	Food	13.27	132.41	115.61	112.25	14.5	3.0
11	Beverages	1.01	94.63	98.53	103.79	-4.0	-5.1
12	Tobacco products	2.53	111.48	134.25	110.82	-17.0	21.1
13	Textiles	1.61	118.61	108.32	100.17	9.5	8.1
14	Wearing apparel	1.86	84.43	112.26	114.30	-24.8	-1.8
15	Leather and related products	0.19	30.93	99.13	73.91	-68.8	34.1
16	Wood and products of wood and cork, except furniture	0.24	152.63	152.85	127.50	-0.1	19.9
17	Paper and paper products	1.11	134.14	137.74	122.35	-2.6	12.6
18	Printing and reproduction of recorded products	0.26	247.92	288.29	114.62	-14.0	151.5
19	Coke and refined petroleum products	36.32	54.71	106.59	176.07	-48.7	-39.5
20	Chemicals and chemical products	3.50	129.25	125.78	115.54	2.8	8.9
21	Basic pharmaceutical products and pharmaceutical preparations	3.30	252.15	216.02	168.17	16.7	28.4
22	Rubber and plastic products	3.79	119.60	119.29	102.29	0.3	16.6
23	Other non-metallic mineral products	3.31	105.55	119.25	125.51	-11.5	-5.0
24	Basic metals	14.54	118.30	122.50	148.30	-3.4	-17.4
25	Fabricated metal products, except machinery and equipment	5.03	79.53	89.52	71.04	-11.2	26.0
26	Computers, electronic and optical products	1.52	187.27	216.33	169.85	-13.4	27.4
27	Electrical equipment	3.44	136.38	125.04	92.92	9.1	34.6
28	Machinery and equipment n.e.c.	1.76	96.79	100.65	119.57	-3.8	-15.8
29	Motor vehicles, trailers and semi-trailers	0.14	127.80	103.52	92.63	23.5	11.8
30	Other transport equipment	0.40	93.64	75.96	97.66	23.3	-22.2
31	Furniture	0.21	197.05	218.65	182.30	-9.9	19.9
32	Other manufacturing	0.22	120.44	152.88	158.70	-21.2	-3.7
33	Repair and installation of machinery and equipment	0.43	45.39	63.36	61.07	-28.4	3.7
MAIN INDUSTRIAL GROUPINGS							
1	Energy	35.82	54.52	108.12	178.99	-49.6	-39.6
2	Intermediate goods	33.33	121.62	120.75	125.75	0.7	-4.0
3	Capital goods	6.62	95.34	110.86	97.02	-14.0	14.3
4	Consumer Durables	0.98	139.37	148.14	120.15	-5.9	23.3
5	Consumer Non-Durables	23.25	142.59	133.67	120.42	6.7	11.0

* Provisional data

Note: The indices and the percentage changes are rounded up to two and one decimal digits, respectively, when published.

Table 4. Annual rates of change of the Turnover Index in Industry: Eurozone Countries

Base year: 2015=100.0

CodeSections and main groupings		October			Rate of change (%)	
		2020*	2019	2018	2020/2019	2019/2018
OVERALL INDEX		105.64	114.26	131.85	-7.5	-13.3
INDUSTRIAL SECTIONS						
B	MINING AND QUARRYING	94.42	230.85	322.53	-59.1	-28.4
C	MANUFACTURING	105.87	111.93	128.03	-5.4	-12.6
MAIN INDUSTRIAL GROUPINGS						
1	Energy	26.52	59.39	161.73	-55.3	-63.3
2	Intermediate goods	125.79	135.18	125.85	-6.9	7.4
3	Capital goods	113.47	119.26	124.54	-4.9	-4.2
4	Consumer Durables	193.60	260.52	187.64	-25.7	38.8
5	Consumer Non-Durables	133.60	122.79	117.00	8.8	5.0

* Provisional data

Table 5. Annual rates of change of the Turnover Index in Industry: Non-Eurozone Countries

Base year: 2015=100.0

CodeSections and main groupings		October			Rate of change (%)	
		2020*	2019	2018	2020/2019	2019/2018
OVERALL INDEX		98.37	121.27	146.82	-18.9	-17.4
INDUSTRIAL SECTIONS						
B	MINING AND QUARRYING	187.87	94.71	109.07	98.4	-13.2
C	MANUFACTURING	96.92	121.70	147.43	-20.4	-17.4
MAIN INDUSTRIAL GROUPINGS						
1	Energy	62.59	122.15	183.96	-48.8	-33.6
2	Intermediate goods	118.90	111.35	125.69	6.8	-11.4
3	Capital goods	89.20	108.01	87.70	-17.4	23.2
4	Consumer Durables	101.92	70.53	73.55	44.5	-4.1
5	Consumer Non-Durables	151.34	144.26	123.75	4.9	16.6

* Provisional data

Note: The indices and the percentage changes are rounded up to two and one decimal digits, respectively, when published.

Table 6. Monthly rate of change of the Turnover Index in Industry: Total Market

Base year: 2015=100.0

Code	Sections and main groupings	October 2020*	September 2020**	Rate of change (%) Oct. 2020/Sep. 2020
OVERALL INDEX		97.46	103.17	-5.5
INDUSTRIAL SECTIONS				
B	MINING AND QUARRYING	107.85	109.29	-1.3
C	MANUFACTURING	97.32	103.09	-5.6
MAIN INDUSTRIAL GROUPINGS				
1	Energy	54.08	75.51	-28.4
2	Intermediate goods	118.81	118.45	0.3
3	Capital goods	108.29	103.38	4.8
4	Consumer Durables	102.19	120.13	-14.9
5	Consumer Non-Durables	113.53	112.64	0.8

Table 7. Monthly rate of change of the Turnover Index in Industry: Domestic Market

Base year: 2015=100.0

Code	Sections and main groupings	October 2020*	September 2020**	Rate of change (%) Oct. 2020/Sep. 2020
OVERALL INDEX		95.72	100.46	-4.7
INDUSTRIAL SECTIONS				
B	MINING AND QUARRYING	74.92	76.56	-2.1
C	MANUFACTURING	95.96	100.73	-4.7
MAIN INDUSTRIAL GROUPINGS				
1	Energy	53.76	66.23	-18.8
2	Intermediate goods	116.96	120.42	-2.9
3	Capital goods	114.35	110.04	3.9
4	Consumer Durables	94.21	113.62	-17.1
5	Consumer Non-Durables	104.94	106.45	-1.4

Table 8. Monthly rate of change of the Turnover Index in Industry: Non-Domestic Market

Base year: 2015=100.0

Code	Sections and main groupings	October 2020*	September 2020**	Rate of change (%) Oct. 2020/Sep. 2020
OVERALL INDEX		100.89	108.51	-7.0
INDUSTRIAL SECTIONS				
B	MINING AND QUARRYING	150.83	152.00	-0.8
C	MANUFACTURING	100.02	107.75	-7.2
MAIN INDUSTRIAL GROUPINGS				
1	Energy	54.52	88.21	-38.2
2	Intermediate goods	121.62	115.47	5.3
3	Capital goods	95.34	89.14	7.0
4	Consumer Durables	139.37	150.40	-7.3
5	Consumer Non-Durables	142.59	133.57	6.8

* Provisional data ** Revised data

Note: The indices and the percentage changes are rounded up to two and one decimal digits, respectively, when published.

Table 9. Monthly rate of change of the Turnover Index in Industry: Eurozone Countries

Base year: 2015=100.0

Code	Sections and main groupings	October 2020*	September 2020**	Rate of change (%) Oct. 2020/Sep. 2020
OVERALL INDEX		105.64	112.22	-5.9
INDUSTRIAL SECTIONS				
B	MINING AND QUARRYING	94.42	121.80	-22.5
C	MANUFACTURING	105.87	112.03	-5.5
MAIN INDUSTRIAL GROUPINGS				
1	Energy	26.52	68.23	-61.1
2	Intermediate goods	125.79	117.97	6.6
3	Capital goods	113.47	121.04	-6.3
4	Consumer Durables	193.60	247.49	-21.8
5	Consumer Non-Durables	133.60	130.36	2.5

* Provisional data ** Revised data

Table 10. Monthly rate of change of the Turnover Index in Industry: Non-Eurozone Countries

Base year: 2015=100.0

Code	Sections and main groupings	October 2020*	September 2020**	Rate of change (%) Oct. 2020/Sep. 2020
OVERALL INDEX		98.37	106.54	-7.7
INDUSTRIAL SECTIONS				
B	MINING AND QUARRYING	187.87	171.83	9.3
C	MANUFACTURING	96.92	105.48	-8.1
MAIN INDUSTRIAL GROUPINGS				
1	Energy	62.59	93.96	-33.4
2	Intermediate goods	118.90	113.84	4.4
3	Capital goods	89.20	78.33	13.9
4	Consumer Durables	101.92	83.36	22.3
5	Consumer Non-Durables	151.34	136.69	10.7

* Provisional data ** Revised data

Note: The indices and the percentage changes are rounded up to two and one decimal digits, respectively, when published.

Table 11. Evolution of the Turnover Index in Industry (y-o-y changes): Total Market

Base year: 2015=100.0

Year and month		Overall Index (Total Market)		Turnover Index in Industry in Domestic Market		Turnover Index in Industry in Non-Domestic Market	
		Index	Annual rate of change (%)	Index	Annual rate of change (%)	Index	Annual rate of change (%)
2019:	10	113.86	-7.3	111.34	-1.7	118.84	-16.1
	11	105.94	-8.4	104.32	-2.6	109.13	-17.5
	12	121.97	10.3	117.67	8.7	130.44	13.3
2020*:	1	99.31	6.0	97.04	5.3	103.78	7.2
	2	103.93	-2.4	98.42	-0.9	114.80	-4.7
	3	102.15	-8.9	97.39	-8.3	111.53	-10.0
	4	79.85	-35.8	74.99	-35.7	89.41	-35.8
	5	86.87	-30.7	85.30	-28.6	89.96	-34.1
	6	110.74	-3.7	109.02	-2.1	114.12	-6.7
	7	111.12	-16.1	108.36	-17.7	116.54	-13.1
	8	87.37	-15.0	86.44	-18.7	89.20	-6.8
	9	103.17	-10.7	100.46	-9.0	108.51	-13.5
	10	97.46	-14.4	95.72	-14.0	100.89	-15.1

*Provisional data

Table 12. Evolution of the Turnover Index in Industry (y-o-y changes): Non-Domestic Market

Base year: 2015=100.0

Year and month		Overall Index (Non-Domestic Market)		Turnover Index in Industry in Eurozone Countries		Turnover Index in Industry in Non-Eurozone Countries	
		Index	Annual rate of change (%)	Index	Annual rate of change (%)	Index	Annual rate of change (%)
2019:	10	118.84	-16.1	114.26	-13.3	121.27	-17.4
	11	109.13	-17.5	128.84	-6.5	98.66	-23.7
	12	130.44	13.3	123.44	4.5	134.16	18.2
2020*:	1	103.78	7.2	116.36	8.7	97.10	6.3
	2	114.80	-4.7	119.67	0.8	112.21	-7.6
	3	111.53	-10.0	132.74	9.5	100.26	-20.0
	4	89.41	-35.8	107.32	-18.6	79.89	-44.2
	5	89.96	-34.1	105.60	-23.6	81.65	-39.9
	6	114.12	-6.7	132.94	-3.6	104.13	-8.7
	7	116.54	-13.1	121.38	-5.3	113.97	-17.0
	8	89.20	-6.8	91.16	-0.6	88.15	-9.8
	9	108.51	-13.5	112.22	-7.1	106.54	-16.7
	10	100.89	-15.1	105.64	-7.5	98.37	-18.9

*Provisional data

Note: The indices and the percentage changes are rounded up to two and one decimal digits, respectively, when published.

Table 13. Average indices and rates of change (%) of the 12-month periods of Turnover Index in Industry: Total Market
Base year: 2015=100.0

Code	Division	Average Indices of 12-month periods			Rate of change (%) 2020/2019	Rate of change (%) 2019/2018
		Nov. 2019- Oct. 2020*	Nov. 2018- Oct. 2019	Nov. 2017- Oct. 2018		
	OVERALL INDEX	100.82	113.97	113.95	-11.5	0.01
B	MINING AND QUARRYING	100.04	106.18	110.53	-5.8	-3.9
05-06-09	Mining of coal and lignite - Extraction of crude petroleum and natural gas - Mining support service activities	30.49	88.79	102.44	-65.7	-13.3
07	Mining of metal ores	190.41	146.86	142.32	29.7	3.2
08	Other mining and quarrying products	98.18	100.53	104.21	-2.3	-3.5
C	MANUFACTURING	100.83	114.07	114.00	-11.6	0.1
10	Food	102.66	103.40	101.79	-0.7	1.6
11	Beverages	100.44	116.23	114.40	-13.6	1.6
12	Tobacco products	132.17	128.06	107.97	3.2	18.6
13	Textiles	97.55	107.16	107.02	-9.0	0.1
14	Wearing apparel	72.46	94.60	97.31	-23.4	-2.8
15	Leather and related products	63.08	87.73	94.46	-28.1	-7.1
16	Wood and products of wood and cork, except furniture	101.90	106.51	103.75	-4.3	2.7
17	Paper and paper products	113.29	113.96	112.13	-0.6	1.6
18	Printing and reproduction of recorded products	89.58	96.81	96.13	-7.5	0.7
19	Coke and refined petroleum products	82.10	120.39	129.52	-31.8	-7.1
20	Chemicals and chemical products	118.65	116.60	110.24	1.8	5.8
21	Basic pharmaceutical products and pharmaceutical preparations	160.16	140.21	113.18	14.2	23.9
22	Rubber and plastic products	108.68	106.32	102.59	2.2	3.6
23	Other non-metallic mineral products	101.58	111.14	107.01	-8.6	3.9
24	Basic metals	116.84	130.71	135.35	-10.6	-3.4
25	Fabricated metal products, except machinery and equipment	96.40	101.60	99.22	-5.1	2.4
26	Computers, electronic and optical products	162.21	150.31	126.48	7.9	18.8
27	Electrical equipment	122.69	126.10	109.98	-2.7	14.7
28	Machinery and equipment n.e.c.	105.37	107.27	106.58	-1.8	0.7
29	Motor vehicles, trailers and semi-trailers	110.08	108.43	90.34	1.5	20.0
30	Other transport equipment	61.48	67.40	70.30	-8.8	-4.1
31	Furniture	106.17	114.36	114.57	-7.2	-0.2
32	Other manufacturing	90.24	103.66	100.02	-12.9	3.6
33	Repair and installation of machinery and equipment	97.83	94.03	91.90	4.0	2.3
	MAIN INDUSTRIAL GROUPINGS					
1	Energy	81.76	120.21	129.34	-32.0	-7.1
2	Intermediate goods	110.33	115.68	113.52	-4.6	1.9
3	Capital goods	103.04	103.91	98.53	-0.8	5.5
4	Consumer Durables	100.50	106.03	107.73	-5.2	-1.6
5	Consumer Non-Durables	108.43	109.84	104.97	-1.3	4.6

*Provisional data

Note: The indices and the percentage changes are rounded up to two and one decimal digits, respectively, when published.

METHODOLOGICAL NOTES

Generally	The Industrial Turnover Index is an indicator of an enterprise's business cycle showing the monthly evolution of the market of goods and services in industry. The first compilation of the Turnover Index was completed by the Hellenic Statistical Authority in 2006, with base year 2000=100.0 and is compiled from 2000 onwards.
Purpose of the index	The purpose of this index is to measure the monthly activity of the industrial sector in terms of value. Turnover comprises the totals invoiced by the observation units during the reference period and corresponds to the market sales of goods or services supplied to third parties. The purposes and the characteristics of the Turnover Index apply, as well, to the indices for the distinction between domestic and non-domestic turnover.
Legal Framework	The compilation and publication of the Turnover Index is based on the framework of the implementation of Council Regulation (EC) No 1165/1998 concerning short-term statistics (STS-R), as well as Regulation (EC) No 1158/2005 of the European Parliament and of the Council amending Council Regulation (EC) No 1165/1998. Furthermore, this index is governed by Regulation (EC) No 1893/2006 of the European Parliament and of the Council, by Commission Regulation (EC) No 656/2007 and by Regulation (EC) No 451/2008 of the Council.
Reference period	Month.
Base year	2015=100.0.
Revision	The latest revision of the Turnover Index in Industry (base year 2015=100.0) took place in the framework of Council Regulation (EC) No 1165/1998 concerning short-term statistics. In accordance with this regulation the index is revised every five years, in years ending in 0 or 5.
Statistical classifications	At the level of classes of economic activities, the statistical classification of economic activities NACE Rev. 2 of EU was used (Regulation No 1893/2006), while at the level of main industrial groupings, the allocation of two-digit and three-digit NACE Rev. 2 headings to categories of aggregate classification was used, in accordance with Commission Regulation No 656/2007.
Geographical coverage	The index covers the whole Country.
Coverage of economic activities	The Turnover Index in Industry is compiled for all activities listed in Sections B (mining and quarrying) and C (manufacturing) of the NACE Rev. 2 statistical classification.
Computation of the Index	The Turnover Index in Industry is a fixed base index. This index is calculated at a first stage at the four-digit level of economic activity and subsequently, with the implementation of appropriate weighting coefficients, the index is calculated at higher levels (three-level and two-level of economic activity) as well as at the level of Main Industrial Groupings (MIGs).
Data collection, processing and imputation in the context of the COVID-19 pandemic	The compilation of the indices was mainly based on data collected by the enterprises (via web-based application, email), as well as data from administrative sources. For October 2020 there was no significant change in the data collection compared to previous reference months.
Publication of data	The Turnover Index in Industry (2015=100.0) is released since August 2019 with June 2019 as first reference month. Data with base year 2015=100.0 are available from January 2000 onwards.
References	More information about the methodology concerning the compilation and calculation of the index and for the time series is available on the website of the Hellenic Statistical Authority (ELSTAT) (http://www.statistics.gr/en/statistics/-/publication/DKT24/-).