



PRESS RELEASE

INDUSTRIAL PRODUCTION INDEX: June 2022, y-o-y increase of 8.4%

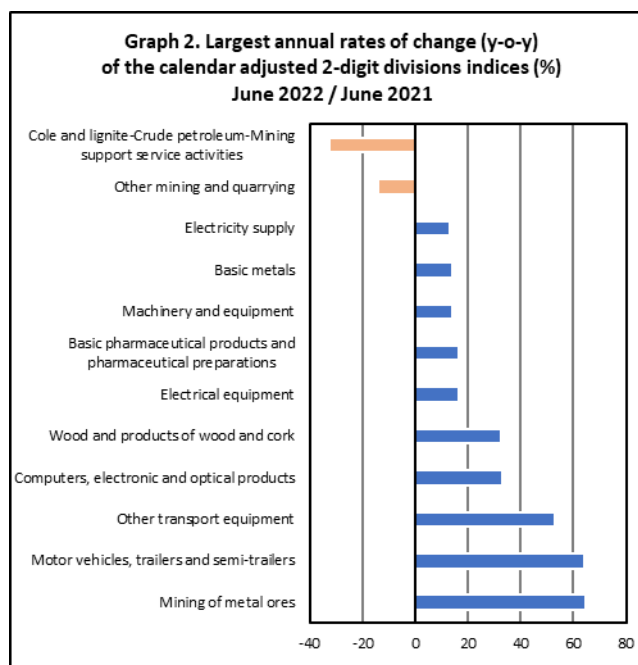
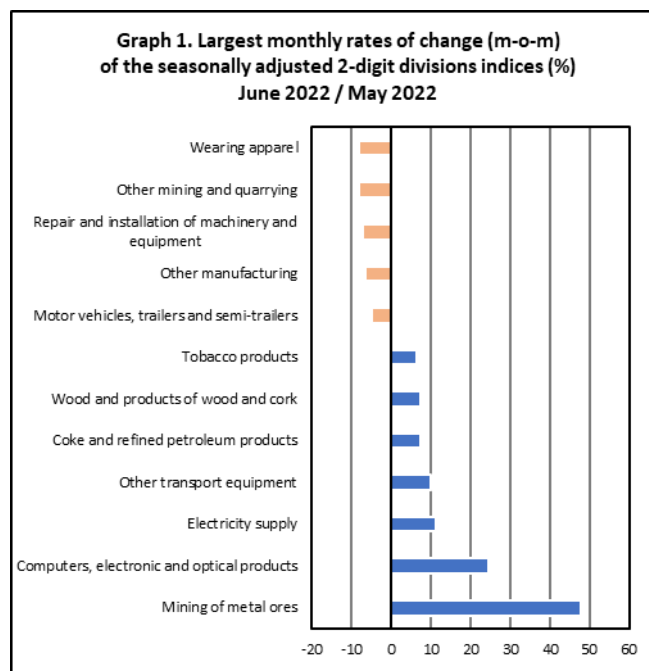
The Hellenic Statistical Authority announces the Industrial Production Index (IPI) with base year 2015=100.0 for June 2022, on the basis of provisional and working day adjusted data, as follows:

The Overall Industrial Production Index in June 2022 recorded an increase of 8.4% compared with June 2021. The Overall IPI in June 2021 increased by 9.1% compared with the corresponding index in June 2020 (Table 1).

The average Overall Industrial Production Index for the period from January to June 2022 recorded an increase of 3.3% compared with the average IPI of the period from January to June 2021 (Table 2).

The seasonally adjusted Overall Industrial Production Index in June 2022 recorded an increase of 3.2% compared with the corresponding index of May 2022 (Table 4).

The index of mining of metal ores division recorded the greatest percentage increase, whereas the index of wearing apparel division showed the greatest percentage decrease in June 2022 compared with May 2022. Comparing the indices of June 2022 with the corresponding indices of June 2021, the greatest percentage increase was recorded in mining of metal ores division, while the highest percentage decrease was recorded in mining of coal and lignite, extraction of crude petroleum and natural gas, mining support service activities division (Tables 1 and 4).



Information for methodological issues:

Business Statistics Division
Manufacture-Construction Indices and Industrial Products Section
Head of the Section: Diamantaki Aikaterini
Tel: +30 213 135 2056
E-mail: a.diamantaki@statistics.gr

Information for data provision:

Tel: +30 213 135 2022, 2308, 2310
E-mail: data.dissem@statistics.gr

Evolution of the Industrial Production Index in June 2022

I. Annual changes: June 2022 / June 2021 (Table 1)

The 8.4% increase of the working day adjusted Overall IPI in June 2022, compared with the corresponding index in June 2021, is due to the annual changes of the sub-indices in the following industrial sections:

1. Increase of:

- 13.2% in the Electricity Supply Index.
- 7.6% in the Manufacturing Index. The increase was mainly the result of the annual changes of the sub-indices in the following 2-digit divisions: motor vehicles, trailers and semi-trailers, other transport equipment, computers, electronic and optical products, wood and products of wood and cork, electrical equipment.
- 7.1% in the Mining and Quarrying Index. The increase was the result of the annual change of the sub-index in the following 2-digit division: mining of metal ores.

2. Decrease of:

- 0.2% in the Water Supply Index.

II. Rates of change of the average index of the period January - June 2022 compared with the corresponding index of the period January - June 2021 (Table 2)

The 3.3% increase of the working day adjusted average Overall IPI in the 6-month period January - June 2022, compared with the corresponding index in January - June 2021, is due to the corresponding rates of change of the sub-indices in the following industrial sections:

1. Increase of:

- 4.4% in the Manufacturing Index.
- 1.0% in the Electricity Supply Index.

2. Decrease of:

- 1.1% in the Water Supply Index.
- 9.7% in the Mining and Quarrying Index.

III. Monthly changes: June 2022 / May 2022 (Table 4)

The 3.2% increase of the seasonally adjusted Overall IPI in June 2022, compared with the corresponding index in May 2022 is due to the monthly changes of the sub-indices in the following industrial sections:

1. Increase of:

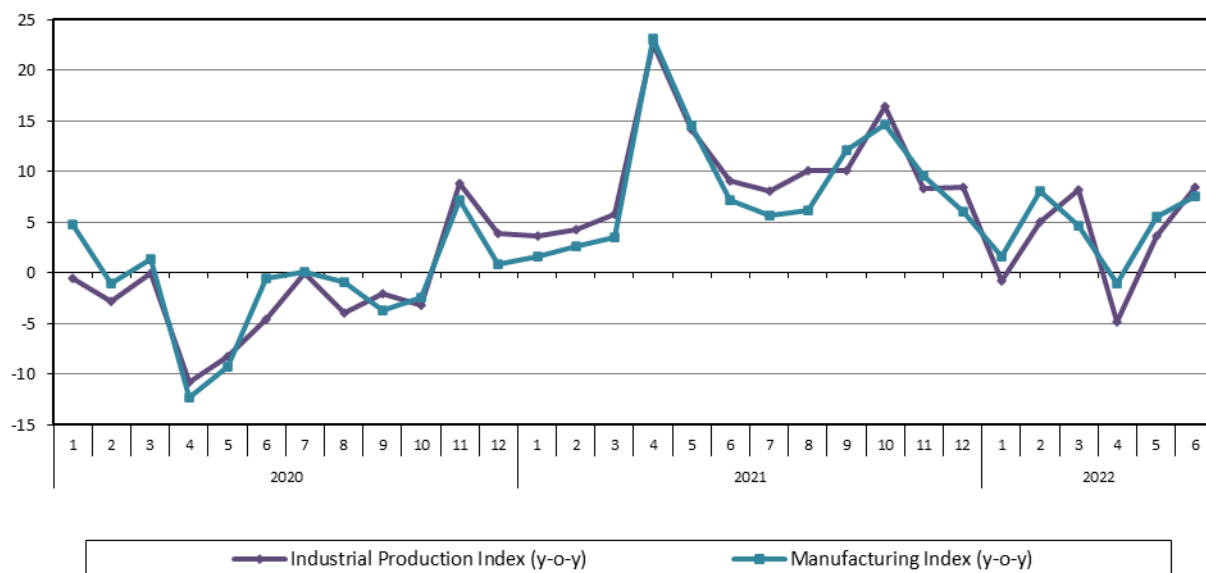
- 11.4% in the Electricity Supply Index.
- 6.4% in the Mining and Quarrying Index.
- 1.2% in the Manufacturing Index.

2. Decrease of:

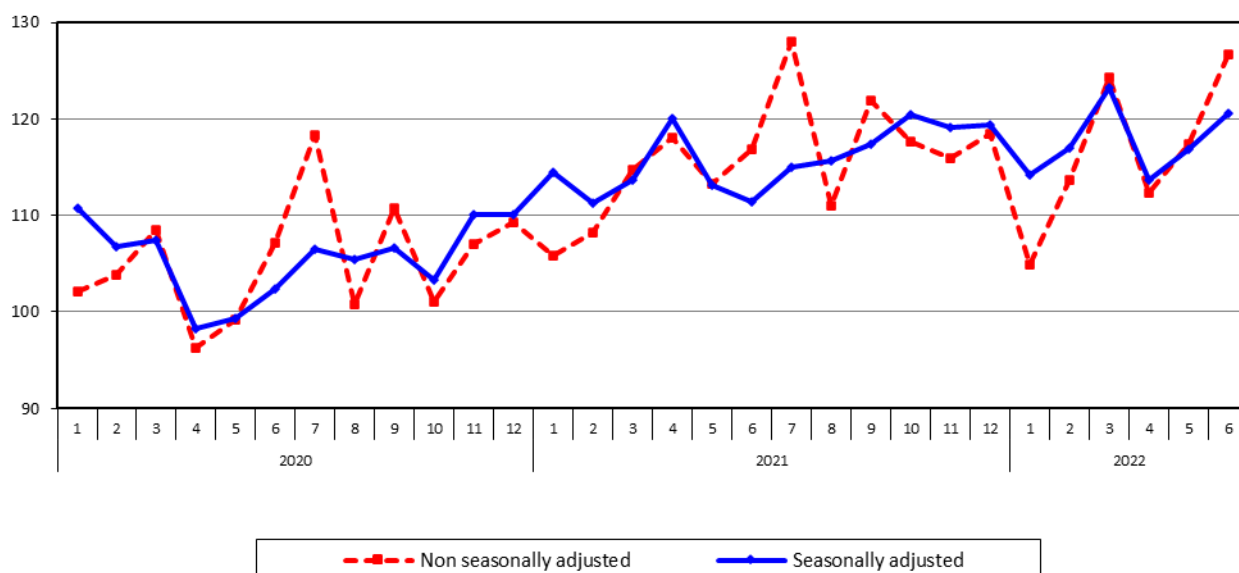
- 0.2% in the Water Supply Index.

The following graphs depict the annual rates of change (y-o-y) of the Industrial Production Index and the Manufacturing Index, the evolution of the seasonally and non-seasonally adjusted Overall Industrial Production Index, as well as the monthly rates of change (m-o-m) of the seasonally adjusted index.

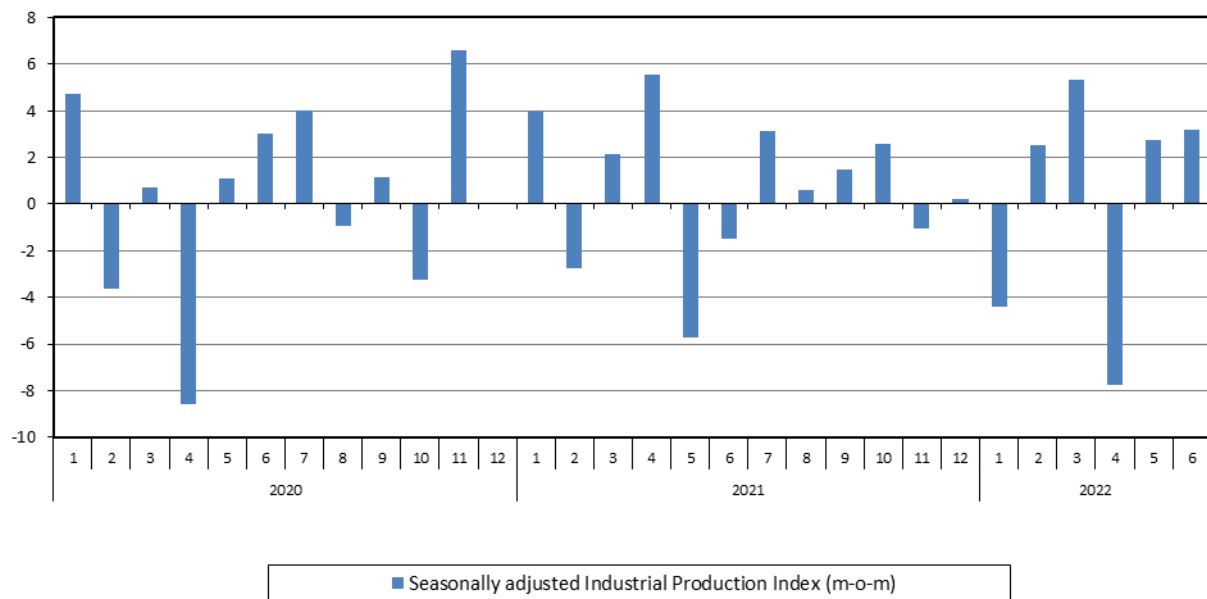
Graph 3. Evolution of annual rates of change (y-o-y) of the Industrial Production Index and the Manufacturing Index (%)



Graph 4. Evolution of the Industrial Production Index (2015=100.0)



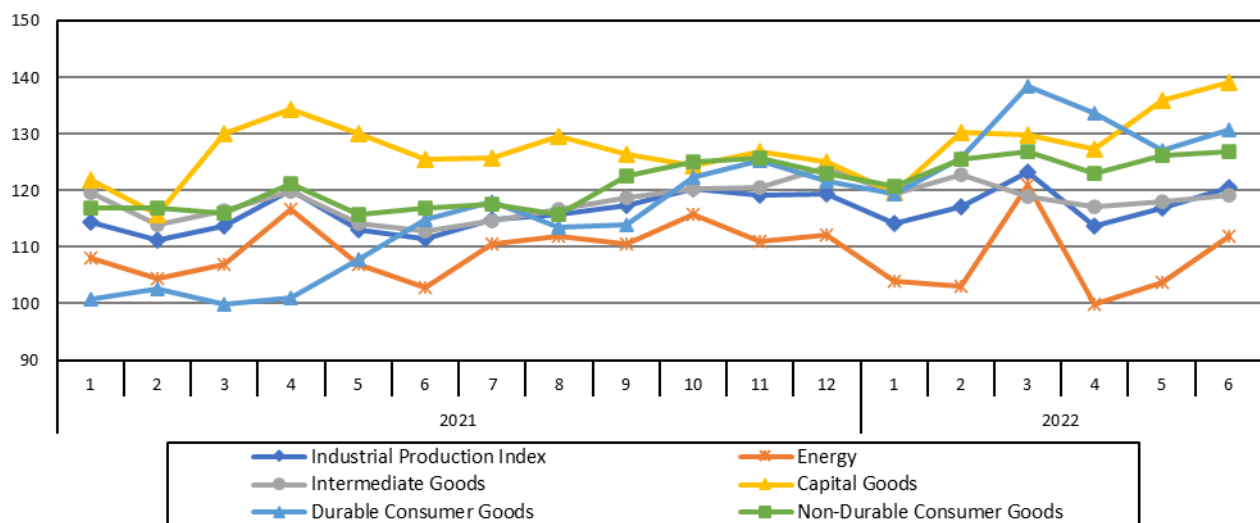
Graph 5. Evolution of the monthly rates of change (m-o-m) of the seasonally adjusted Industrial Production Index (%)



It should be noted that the time series with the seasonally adjusted indices is recalculated every time a new observation is added in the time series. Therefore, the seasonally adjusted data differ from the data published in the previous Press Release.

The following graphs depict the evolution of the seasonally adjusted Industrial Production Index and the Main Industrial Groupings, as well as the evolution of the Industrial Production Index and the Industrial Sections Indices.

Graph 6. Evolution of the seasonally adjusted Industrial Production Index and the Main Industrial Groupings Indices, January 2021 - June 2022 (2015=100.0)



**Graph 7. Evolution of the Industrial Production Index and the Industrial Section Indices
(2015=100.0)**

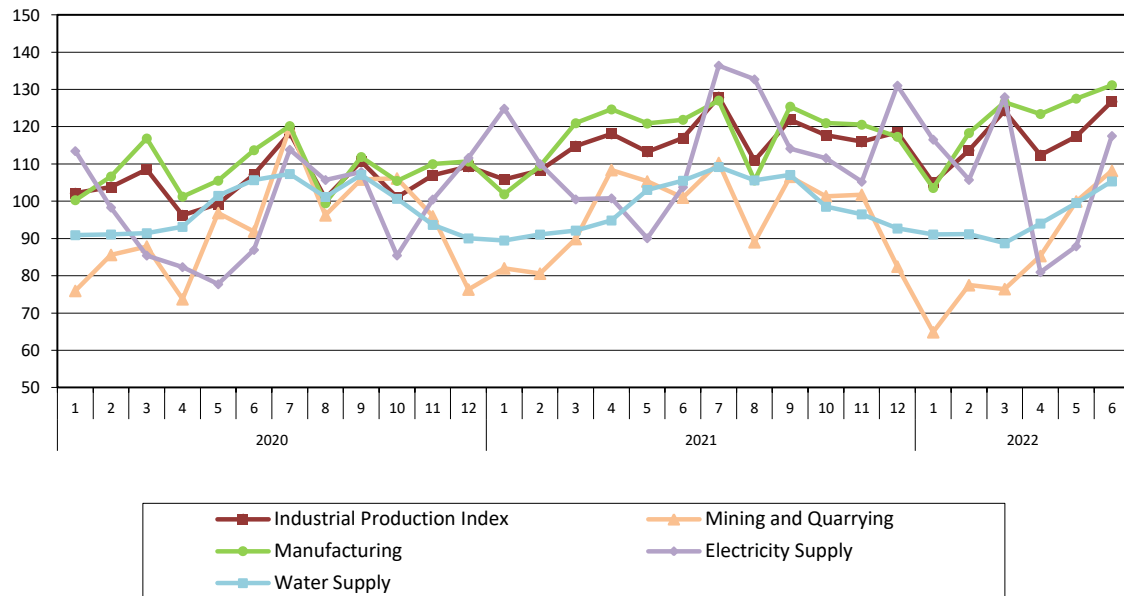


Table 1. Annual rates of change of the Industrial Production Index*(Working day adjusted data, according to the real number of working days)***Base year: 2015=100.0**

Code		Division	June			Rate of change (%)	
			2022*	2021*	2020	2022/2021	2021/2020
OVERALL INDEX			126.76	116.92	107.19	8.4	9.1
B	MINING AND QUARRYING		108.17	100.99	91.90	7.1	9.9
05-06-09	Mining of coal and lignite – Extraction of crude petroleum and natural gas – Mining support service activities		8.30	12.30	3.54	-32.5	247.2
07	Mining of metal ores		195.75	118.97	156.51	64.5	-24.0
08	Other mining and quarrying		92.71	107.84	82.66	-14.0	30.5
C	MANUFACTURING		131.16	121.87	113.71	7.6	7.2
10	Food		109.38	101.76	95.72	7.5	6.3
11	Beverages		135.09	128.48	120.94	5.1	6.2
12	Tobacco products		133.42	129.48	129.86	3.0	-0.3
13	Textiles		122.14	126.09	116.13	-3.1	8.6
14	Wearing apparel		66.70	69.26	55.35	-3.7	25.1
15	Leather and related products		75.73	71.02	64.48	6.6	10.1
16	Wood and products of wood and cork, except furniture		133.65	100.91	103.25	32.4	-2.3
17	Paper and paper products		119.97	116.35	107.22	3.1	8.5
18	Printing and reproduction of recorded products		136.93	121.10	113.72	13.1	6.5
19	Coke and refined petroleum products		108.20	104.33	111.20	3.7	-6.2
20	Chemicals and chemical products		136.49	137.63	138.46	-0.8	-0.6
21	Basic pharmaceutical products and pharmaceutical preparations		249.01	213.95	191.44	16.4	11.8
22	Rubber and plastic products		131.86	125.75	124.16	4.9	1.3
23	Other non-metallic mineral products		125.54	127.07	107.79	-1.2	17.9
24	Basic metals		135.61	118.91	116.42	14.0	2.1
25	Fabricated metal products, except machinery and equipment		162.95	157.26	136.56	3.6	15.2
26	Computers, electronic and optical products		239.95	180.48	133.42	33.0	35.3
27	Electrical equipment		150.24	128.66	95.73	16.8	34.4
28	Machinery and equipment n. e. c.		144.80	126.94	109.81	14.1	15.6
29	Motor vehicles, trailers and semi-trailers		190.20	115.81	108.47	64.2	6.8
30	Other transport equipment		106.39	69.47	65.53	53.1	6.0
31	Furniture		181.74	169.33	145.82	7.3	16.1
32	Other manufacturing		142.97	137.22	120.64	4.2	13.7
33	Repair and installation of machinery and equipment		103.93	95.84	72.60	8.4	32.0
D	ELECTRICITY SUPPLY		117.52	103.79	86.96	13.2	19.4
35	Electricity supply		117.52	103.79	86.96	13.2	19.4
E	WATER SUPPLY		105.33	105.51	105.67	-0.2	-0.2
36	Water collection, treatment and supply		105.33	105.51	105.67	-0.2	-0.2
MAIN INDUSTRIAL GROUPINGS							
1	Energy		113.04	103.86	96.20	8.8	8.0
2	Intermediate goods		129.63	122.90	114.27	5.5	7.6
3	Capital goods		150.75	133.57	111.39	12.9	19.9
4	Consumer Durables		161.37	141.62	118.82	14.0	19.2
5	Consumer Non-Durables		133.02	122.42	113.26	8.7	8.1

* Provisional data

Note: The indices are rounded up to two decimal digits when published and percentage changes up to one decimal digit when published.

Table 2. Average indices of the period January – June and rates of change (%) of the Industrial Production Index
(Working day adjusted data, according to the real number of working days)

Base year: 2015=100.0

Code		Division	Average indices of the period January-June			Rate of change (%)	
			2022*	2021*	2020	2022/2021	2021/2020
OVERALL INDEX			116.57	112.86	102.87	3.3	9.7
B	MINING AND QUARRYING		85.38	94.53	85.32	-9.7	10.8
05-06-09	Mining of coal and lignite – Extraction of crude petroleum and natural gas – Mining support service activities		21.32	18.73	6.97	13.8	168.8
07	Mining of metal ores		120.08	131.99	145.69	-9.0	-9.4
08	Other mining and quarrying		82.85	92.79	76.06	-10.7	22.0
C	MANUFACTURING		121.77	116.62	107.38	4.4	8.6
10	Food		106.98	102.31	99.75	4.6	2.6
11	Beverages		104.53	100.91	84.09	3.6	20.0
12	Tobacco products		123.68	129.06	113.15	-4.2	14.1
13	Textiles		117.01	119.93	100.93	-2.4	18.8
14	Wearing apparel		79.20	65.37	56.38	21.2	15.9
15	Leather and related products		80.48	74.56	70.04	7.9	6.5
16	Wood and products of wood and cork, except furniture		110.62	97.06	93.18	14.0	4.16
17	Paper and paper products		121.07	114.48	111.57	5.8	2.60
18	Printing and reproduction of recorded products		128.39	108.60	105.20	18.2	3.2
19	Coke and refined petroleum products		102.17	104.82	104.22	-2.5	0.6
20	Chemicals and chemical products		130.39	133.77	129.37	-2.5	3.4
21	Basic pharmaceutical products and pharmaceutical preparations		230.40	202.58	184.02	13.7	10.1
22	Rubber and plastic products		129.86	125.76	116.32	3.3	8.1
23	Other non-metallic mineral products		117.01	118.64	97.06	-1.4	22.2
24	Basic metals		133.60	126.29	117.91	5.8	7.1
25	Fabricated metal products, except machinery and equipment		137.90	139.84	116.26	-1.4	20.3
26	Computers, electronic and optical products		201.09	182.23	150.28	10.4	21.3
27	Electrical equipment		143.12	120.45	92.89	18.8	29.7
28	Machinery and equipment n. e. c.		123.92	110.70	95.94	11.9	15.4
29	Motor vehicles, trailers and semi-trailers		148.53	99.43	103.04	49.4	-3.5
30	Other transport equipment		73.92	67.49	53.44	9.5	26.3
31	Furniture		147.59	118.35	102.87	24.7	15.0
32	Other manufacturing		124.59	117.51	94.12	6.0	24.8
33	Repair and installation of machinery and equipment		92.06	85.26	82.72	8.0	3.1
D	ELECTRICITY SUPPLY		106.11	105.01	90.71	1.0	15.8
35	Electricity supply		106.11	105.01	90.71	1.0	15.8
E	WATER SUPPLY		94.99	96.02	95.62	-1.1	0.4
36	Water collection, treatment and supply		94.99	96.02	95.62	-1.1	0.4
MAIN INDUSTRIAL GROUPINGS							
1	Energy		103.56	103.83	95.22	-0.3	9.0
2	Intermediate goods		121.56	118.29	107.10	2.8	10.5
3	Capital goods		126.55	122.45	104.54	3.3	17.1
4	Consumer Durables		129.63	104.84	88.40	23.6	18.6
5	Consumer Non-Durables		125.12	117.44	109.10	6.5	7.6

* Provisional data

Note: The indices are rounded up to two decimal digits when published and percentage changes up to one decimal digit when published.

Table 3. Monthly rate of change of the Industrial Production Index
(Working day adjusted data, according to the real number of working days)

Base year: 2015=100.0

Code	Division	June 2022*	May 2022**	Rate of change (%) June 2022 / May 2022
OVERALL INDEX		126.76	117.42	8.0
B	MINING AND QUARRYING	108.17	99.97	8.2
05-06-09	Mining of coal and lignite – Extraction of crude petroleum and natural gas – Mining support service activities	8.30	23.20	-64.2
07	Mining of metal ores	195.75	131.44	48.9
08	Other mining and quarrying	92.71	100.42	-7.7
C	MANUFACTURING	131.16	127.54	2.8
10	Food	109.38	108.18	1.1
11	Beverages	135.09	122.14	10.6
12	Tobacco products	133.42	128.78	3.6
13	Textiles	122.14	118.72	2.9
14	Wearing apparel	66.70	81.91	-18.6
15	Leather and related products	75.73	88.03	-14.0
16	Wood and products of wood and cork, except furniture	133.65	118.48	12.8
17	Paper and paper products	119.97	122.08	-1.7
18	Printing and reproduction of recorded products	136.93	136.50	0.3
19	Coke and refined petroleum products	108.20	102.92	5.1
20	Chemicals and chemical products	136.49	139.70	-2.3
21	Basic pharmaceutical products and pharmaceutical preparations	249.01	238.55	4.4
22	Rubber and plastic products	131.86	132.41	-0.4
23	Other non-metallic mineral products	125.54	125.97	-0.3
24	Basic metals	135.61	134.19	1.1
25	Fabricated metal products, except machinery and equipment	162.95	157.53	3.4
26	Computers, electronic and optical products	239.95	181.81	32.0
27	Electrical equipment	150.24	142.49	5.4
28	Machinery and equipment n. e. c.	144.80	134.45	7.7
29	Motor vehicles, trailers and semi-trailers	190.20	187.65	1.4
30	Other transport equipment	106.39	89.15	19.3
31	Furniture	181.74	167.29	8.6
32	Other manufacturing	142.97	146.65	-2.5
33	Repair and installation of machinery and equipment	103.93	111.80	-7.0
D	ELECTRICITY SUPPLY	117.52	87.91	33.7
35	Electricity supply	117.52	87.91	33.7
E	WATER SUPPLY	105.33	99.55	5.8
36	Water collection, treatment and supply	105.33	99.55	5.8
MAIN INDUSTRIAL GROUPINGS				
1	Energy	113.04	93.68	20.7
2	Intermediate goods	129.63	127.86	1.4
3	Capital goods	150.75	140.17	7.5
4	Consumer Durables	161.37	149.61	7.9
5	Consumer Non-Durables	133.02	130.36	2.0

* Provisional data ** Revised data

Note: The indices are rounded up to two decimal digits when published and percentage changes up to one decimal digit when published.

Table 4. Monthly rate of change of the seasonally adjusted Industrial Production Index

Base year: 2015=100.0				
Code	Division	June 2022	May 2022	Rate of change (%) June 2022 / May 2022
OVERALL INDEX		120.60	116.85	3.2
B	MINING AND QUARRYING	95.43	89.72	6.4
05-06-09	Mining of coal and lignite – Extraction of crude petroleum and natural gas – Mining support service activities	-	-	-
07	Mining of metal ores	183.83	124.37	47.8
08	Other mining and quarrying	79.65	86.64	-8.1
C	MANUFACTURING	123.86	122.39	1.2
10	Food	111.84	110.24	1.5
11	Beverages	101.49	102.34	-0.8
12	Tobacco products	123.28	115.78	6.5
13	Textiles	112.11	113.14	-0.9
14	Wearing apparel	76.92	83.77	-8.2
15	Leather and related products	80.88	79.19	2.1
16	Wood and products of wood and cork, except furniture	119.32	111.16	7.3
17	Paper and paper products	117.37	115.89	1.3
18	Printing and reproduction of recorded products	129.65	129.90	-0.2
19	Coke and refined petroleum products	111.83	104.04	7.5
20	Chemicals and chemical products	126.14	128.32	-1.7
21	Basic pharmaceutical products and pharmaceutical preparations	240.66	240.84	-0.1
22	Rubber and plastic products	125.59	125.10	0.4
23	Other non-metallic mineral products	112.95	113.92	-0.9
24	Basic metals	130.87	129.71	0.9
25	Fabricated metal products, except machinery and equipment	140.46	140.36	0.1
26	Computers, electronic and optical products	237.64	190.69	24.6
27	Electrical equipment	139.59	136.36	2.4
28	Machinery and equipment n. e. c.	130.00	128.31	1.3
29	Motor vehicles, trailers and semi-trailers	173.20	182.07	-4.9
30	Other transport equipment	91.49	83.26	9.9
31	Furniture	145.31	140.77	3.2
32	Other manufacturing	128.07	137.23	-6.7
33	Repair and installation of machinery and equipment	98.09	105.58	-7.1
D	ELECTRICITY SUPPLY	117.56	105.57	11.4
35	Electricity supply	117.56	105.57	11.4
E	WATER SUPPLY	96.81	96.99	-0.2
36	Water collection, treatment and supply	96.81	96.99	-0.2
MAIN INDUSTRIAL GROUPINGS				
1	Energy	111.80	103.69	7.8
2	Intermediate goods	119.13	118.14	0.8
3	Capital goods	139.19	135.97	2.4
4	Consumer Durables	130.69	127.12	2.8
5	Consumer Non-Durables	126.97	126.19	0.6

Notes:

- 1. The indices are rounded up to two decimal digits when published and percentage changes up to one decimal digit when published.*
- 2. The whole time-series with seasonally adjusted indices is recalculated every time a new observation is added in the time-series.*
- 3. The composed index of divisions 05-06-09 is not seasonally adjusted.*

Table 5. Evolution of the Overall Industrial Production Index

(Working day adjusted data, according to the real number of working days)

Base year: 2015=100.0

Year and month	Overall Index	Monthly rate of change (%)	Annual rate of change (%)	12-month average index (moving average)	Rate of change of the 12-month average index (%)
2020: 1	102.17	-2.9	-0.6	107.52	-1.0
2	103.80	1.6	-2.9	107.26	-1.4
3	108.53	4.6	0.03	107.27	-1.3
4	96.26	-11.3	-10.8	106.30	-2.4
5	99.25	3.1	-8.2	105.56	-3.1
6	107.19	8.0	-4.6	105.13	-3.4
7	118.36	10.4	-0.1	105.12	-3.3
8	100.78	-14.8	-3.9	104.78	-3.6
9	110.70	9.8	-2.1	104.58	-3.9
10	101.05	-8.7	-3.2	104.30	-4.1
11	107.02	5.9	8.9	105.03	-2.7
12	109.29	2.1	3.8	105.37	-2.0
Annual average	105.37				
2021*: 1	105.83	-3.2	3.6	105.67	-1.7
2	108.23	2.3	4.3	106.04	-1.1
3	114.80	6.1	5.8	106.56	-0.7
4	118.10	2.9	22.7	108.38	2.0
5	113.29	-4.1	14.1	109.55	3.8
6	116.92	3.2	9.1	110.36	5.0
7	127.97	9.5	8.1	111.17	5.7
8	110.97	-13.3	10.1	112.01	6.9
9	121.87	9.8	10.1	112.95	8.0
10	117.68	-3.4	16.5	114.33	9.6
11	115.96	-1.5	8.4	115.04	9.5
12	118.48	2.2	8.4	115.84	9.9
Annual average	115.84				
2022*: 1	104.93	-11.4	-0.8	115.77	9.6
2	113.65	8.3	5.0	116.22	9.6
3	124.27	9.3	8.3	117.01	9.8
4	112.39	-9.6	-4.8	116.53	7.5
5	117.42	4.5	3.6	116.88	6.7
6	126.76	8.0	8.4	117.70	6.6

* Provisional data

Note: The indices are rounded up to two decimal digits when published and percentage changes up to one decimal digit when published.

Table 6. Monthly evolution of the seasonally adjusted Overall Industrial Production Index and Main Industrial Groupings

Base year: 2015=100.0

Year and month		Overall Index		Energy		Intermediate goods		Capital goods		Consumer durables		Consumer non-durables	
		Index	Monthly rate of change (%)	Index	Monthly rate of change (%)	Index	Monthly rate of change (%)	Index	Monthly rate of change (%)	Index	Monthly rate of change (%)	Index	Monthly rate of change (%)
2020:	1	110.77	4.7	101.12	7.0	114.28	5.6	123.91	5.3	122.54	12.1	115.63	1.4
	2	106.72	-3.7	96.37	-4.7	111.53	-2.4	117.44	-5.2	112.80	-7.9	112.36	-2.8
	3	107.49	0.7	98.94	2.7	112.44	0.8	109.03	-7.2	96.05	-14.8	114.14	1.6
	4	98.26	-8.6	102.02	3.1	89.42	-20.5	100.98	-7.4	53.24	-44.6	102.15	-10.5
	5	99.35	1.1	97.10	-4.8	99.57	11.3	99.46	-1.5	69.32	30.2	103.39	1.2
	6	102.34	3.0	95.31	-1.8	104.77	5.2	106.77	7.3	97.00	39.9	108.05	4.5
	7	106.45	4.0	99.70	4.6	110.99	5.9	118.75	11.2	114.79	18.3	107.44	-0.6
	8	105.48	-0.9	94.69	-5.0	114.54	3.2	109.57	-7.7	107.71	-6.2	110.30	2.7
	9	106.69	1.1	96.95	2.4	111.19	-2.9	114.74	4.7	104.73	-2.8	112.93	2.4
	10	103.25	-3.2	87.38	-9.9	111.83	0.6	119.43	4.1	101.28	-3.3	111.61	-1.2
	11	110.06	6.6	102.51	17.3	116.45	4.1	119.23	-0.2	97.88	-3.4	112.41	0.7
	12	110.08	0.02	103.60	1.1	115.71	-0.6	115.74	-2.9	98.17	0.3	112.65	0.2
Annual average		105.58		97.97		109.39		112.92		97.96		110.25	
2021:	1	114.46	4.0	108.04	4.3	119.55	3.3	121.90	5.3	100.86	2.7	117.00	3.9
	2	111.30	-2.8	104.37	-3.4	113.90	-4.7	115.69	-5.1	102.54	1.7	116.96	-0.04
	3	113.70	2.2	106.91	2.4	116.55	2.3	130.08	12.4	99.79	-2.7	116.09	-0.7
	4	119.99	5.5	116.76	9.2	119.77	2.8	134.43	3.3	101.07	1.3	121.23	4.4
	5	113.13	-5.7	106.81	-8.5	114.13	-4.7	129.99	-3.3	107.91	6.8	115.83	-4.5
	6	111.46	-1.5	102.85	-3.7	112.88	-1.1	125.49	-3.5	114.75	6.3	116.88	0.9
	7	114.96	3.1	110.60	7.5	114.55	1.5	125.74	0.2	117.94	2.8	117.56	0.6
	8	115.67	0.6	111.98	1.2	116.57	1.8	129.70	3.2	113.42	-3.8	115.85	-1.4
	9	117.40	1.5	110.48	-1.3	118.77	1.9	126.47	-2.5	113.90	0.4	122.50	5.7
	10	120.42	2.6	115.75	4.8	120.25	1.2	124.41	-1.6	122.24	7.3	125.03	2.1
	11	119.18	-1.0	110.97	-4.1	120.50	0.2	126.91	2.0	125.25	2.5	125.73	0.6
	12	119.44	0.2	112.11	1.0	124.16	3.0	125.16	-1.4	121.58	-2.9	123.02	-2.2
Annual average		115.93		109.80		117.63		126.33		111.77		119.47	
2022:	1	114.18	-4.4	104.02	-7.2	119.35	-3.9	119.55	-4.5	119.32	-1.9	120.77	-1.8
	2	117.06	2.5	103.01	-1.0	122.84	2.9	130.23	8.9	125.64	5.3	125.63	4.0
	3	123.28	5.3	120.97	17.4	118.98	-3.1	129.85	-0.3	138.38	10.1	126.91	1.0
	4	113.73	-7.8	99.95	-17.4	117.21	-1.5	127.32	-1.9	133.72	-3.4	123.07	-3.0
	5	116.85	2.7	103.69	3.7	118.14	0.8	135.97	6.8	127.12	-4.9	126.19	2.5
	6	120.60	3.2	111.80	7.8	119.13	0.8	139.19	2.4	130.69	2.8	126.97	0.6

Notes:

1. The indices are rounded up to two decimal digits when published and percentage changes up to one decimal digit when published.
2. The whole time-series with seasonally adjusted indices is recalculated every time a new observation is added in the time-series.

METHODOLOGICAL NOTES

Generally	The Industrial Production Index (IPI) in Greece has been compiled by the Hellenic Statistical Authority (ELSTAT) from 1959 onwards.
Purpose of the index	The objective of the index is to compare the magnitude (volume) of the output in the current month in the mining and quarrying, manufacturing, electricity and water supply divisions with the corresponding output of a given fixed period, which is considered as base period. The Industrial Production Index shows the evolution of the value added of the production factors cost, at constant prices.
Legal framework	The compilation of the IPI is based on the framework of the implementation of Council Regulation (EC) No 1165/1998 concerning short-term statistics (STS-R). Furthermore, the IPI is governed by Regulation (EC) No 1893/2006 of the European Parliament and of the Council, by Commission Regulation (EC) No 656/2007, by Council Regulation (EC) No 451/2008, by Regulation (EU) No 2019/2152 of the European Parliament and of the Council on European business statistics, as well as Commission Implementing Regulation (EU) No 2020/1197 laying down technical specifications and arrangements pursuant to Regulation (EU) No 2019/2152.
Reference period	Month.
Base year	2015=100.0.
Revision	The IPI is a fixed base index. The Industrial Production Index was currently revised with new base year 2015 (2015=100.0) according to the provisions of Council Regulation No 1165/1998 concerning short-term statistics. Short-term indices are revised every five (5) years, particularly in calendar years ending in 0 or 5.
Statistical classifications	At the level of branches of economic activities, the statistical classification of economic activities NACE Rev.2 of EU was used (Regulation No 1893/2006), while at the level of main industrial groupings, the allocation of two-digit and three-digit NACE Rev. 2 headings to categories of aggregate classification was used, in accordance with Council Regulation No 656/2007. At product level, the statistical classification CPA 2008 of EU was used, according to Council Regulation No 451/2008.
Geographical coverage	The index covers the whole Country.
Coverage of economic activities	The index covers all the sections of industry, the main industrial groups, as well as all levels of economic activity.
Statistical survey	The data are collected from a sample of 1.263 enterprises. The survey covers 325 products and the measurement of the surveyed products is made in terms of output quantities or in terms of production value or turnover, according to the specific features in each branch of economic activity.
Seasonal adjustment	Seasonal adjustment is the procedure followed to remove the impact of seasonality on the time-series (i.e. the impact of monthly effects, e.g. holidays, tourist period etc.), in order to improve comparability over time. The method applied is TRAMO-SEATS with the use of JDemetra+ 2.0.0. For the seasonal adjustment of the Industrial Production Index at 2-digit level of NACE Rev.2. at section level (B – Mining and Quarrying, C – Manufacturing, D – Electricity and E – Water Supply) and for the Main Industrial Groupings (MIGs), the direct approach is applied, namely each time-series is seasonally adjusted independently. For the overall Industrial Production Index, the indirect approach is applied, with the seasonally adjusted IPI being computed by aggregating the seasonally adjusted MIGs using appropriate weights.
Publication of data	The revised IPI with the new base year 2015 (2015=100.0) is released since July 2019, with May 2019 as the first reference month. Data with base year 2015=100.0 are available from January 2000 onwards.
References	More information about the methodology concerning the compilation and calculation of the index and the time series are available on the website of the Hellenic Statistical Authority (ELSTAT) (http://www.statistics.gr/en/statistics/-/publication/DKT21/-).