



PRESS RELEASE

INDUSTRIAL PRODUCTION INDEX: August 2022, y-o-y increase of 3.9%

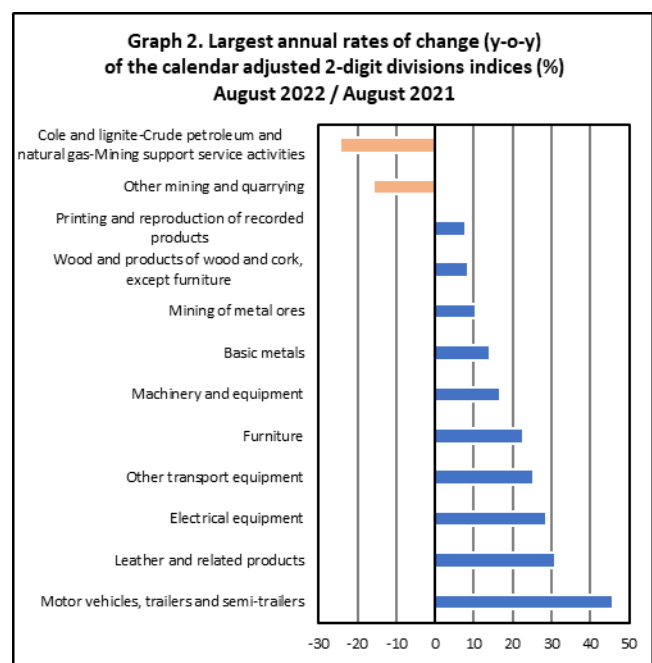
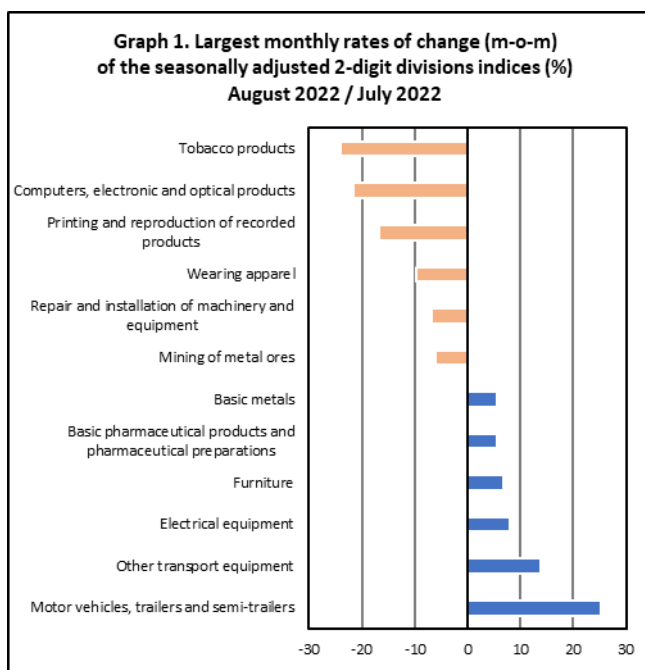
The Hellenic Statistical Authority announces the Industrial Production Index (IPI) with base year 2015=100.0 for August 2022, on the basis of provisional and working day adjusted data, as follows:

The Overall Industrial Production Index in August 2022 recorded an increase of 3.9% compared with August 2021. The Overall IPI in August 2021 increased by 10.2% compared with the corresponding index in August 2020 (Table 1).

The average Overall Industrial Production Index for the period from January to August 2022 recorded an increase of 4.1% compared with the average IPI of the period from January to August 2021 (Table 2).

The seasonally adjusted Overall Industrial Production Index in August 2022 recorded a decrease of 1.1% compared with the corresponding index of July 2022 (Table 4).

The index of motor vehicles, trailers and semi-trailers division recorded the greatest percentage increase, whereas the index of tobacco products division showed the greatest percentage decrease in August 2022 compared with July 2022. Comparing the indices of August 2022 with the corresponding indices of August 2021, the greatest percentage increase was recorded in motor vehicles, trailers and semi-trailers division, while the highest percentage decrease was recorded in mining of coal and lignite-extraction of crude petroleum and natural gas-mining support service activities division (Tables 1 and 4).



Information on methodological issues:

Business Statistics Division
Manufacture-Construction Indices and Industrial Products Section
Head of the Section: Diamantaki Aikaterini
Tel: +30 213 135 2056
E-mail: a.diamantaki@statistics.gr

Information on data provision:

Tel: +30 213 135 2022, 2308, 2310
E-mail: data.dissem@statistics.gr

Evolution of the Industrial Production Index in August 2022

I. Annual changes: August 2022 / August 2021 (Table 1)

The 3.9% increase of the working day adjusted Overall IPI in August 2022, compared with the corresponding index in August 2021, is due to the annual changes of the sub-indices in the following industrial sections:

1. Increase of:

- 5.3% in the Electricity Supply Index.
- 4.3% in the Manufacturing Index. The increase was mainly the result of the annual changes of the sub-indices in the following 2-digit divisions: motor vehicles, trailers and semi-trailers, leather and related products, electrical equipment, other transport equipment, furniture.

2. Decrease of:

- 5.0% in the Water Supply Index.
- 9.7% in the Mining and Quarrying Index. The increase was the result of the annual change of the sub-indices in the following 2-digit division: mining of coal and lignite-extraction of crude petroleum and natural gas-mining support service activities and other mining and quarrying.

II. Rates of change of the average index of the period January - August 2022 compared with the corresponding index of the period January - August 2021 (Table 2)

The 4.1% increase of the working day adjusted average Overall IPI in the 8-month period January - August 2022, compared with the corresponding index in January - August 2021, is due to the corresponding rates of change of the sub-indices in the following industrial sections:

1. Increase of:

- 5.0% in the Manufacturing Index.
- 3.2% in the Electricity Supply Index.

2. Decrease of:

- 1.9% in the Water Supply Index.
- 10.2% in the Mining and Quarrying Index.

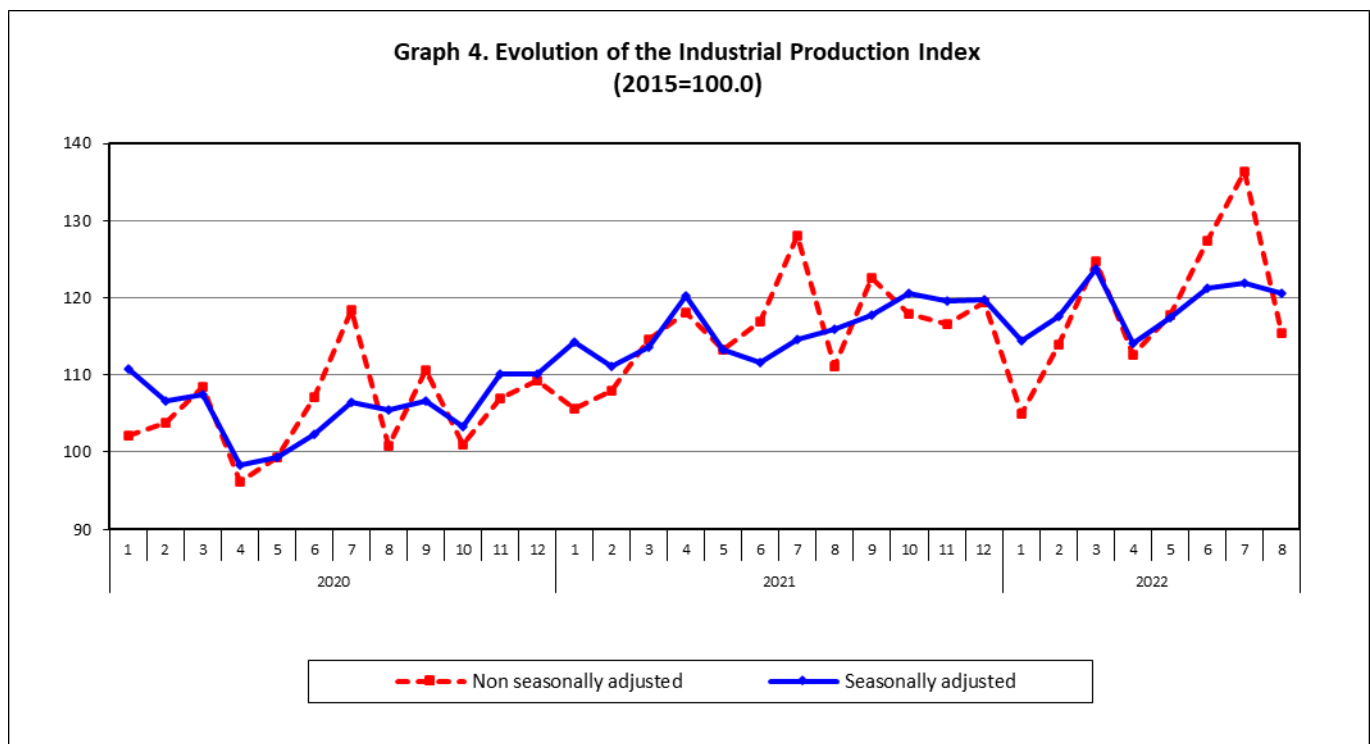
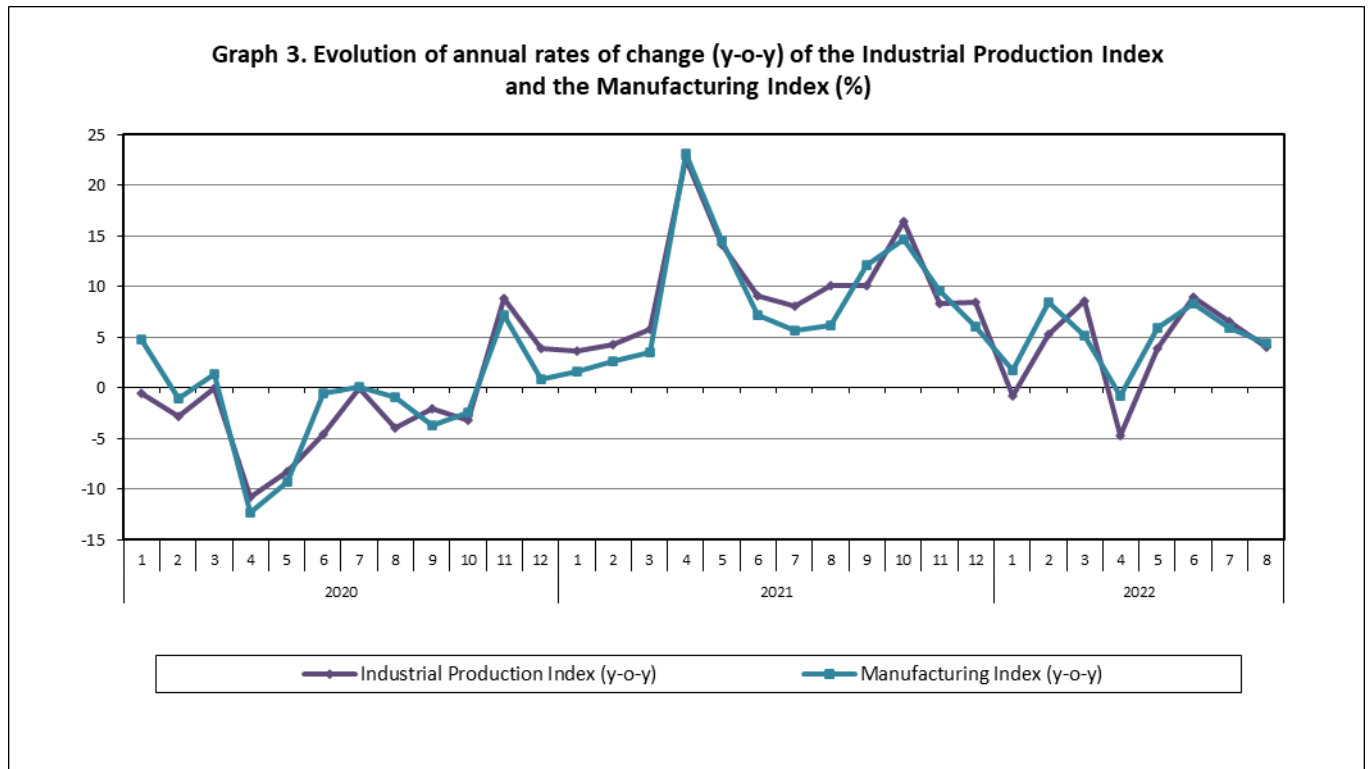
III. Monthly changes: August 2022 / July 2022 (Table 4)

The 1.1% decrease of the seasonally adjusted Overall IPI in August 2022, compared with the corresponding index in July 2022 is due to the monthly changes of the sub-indices in the following industrial sections:

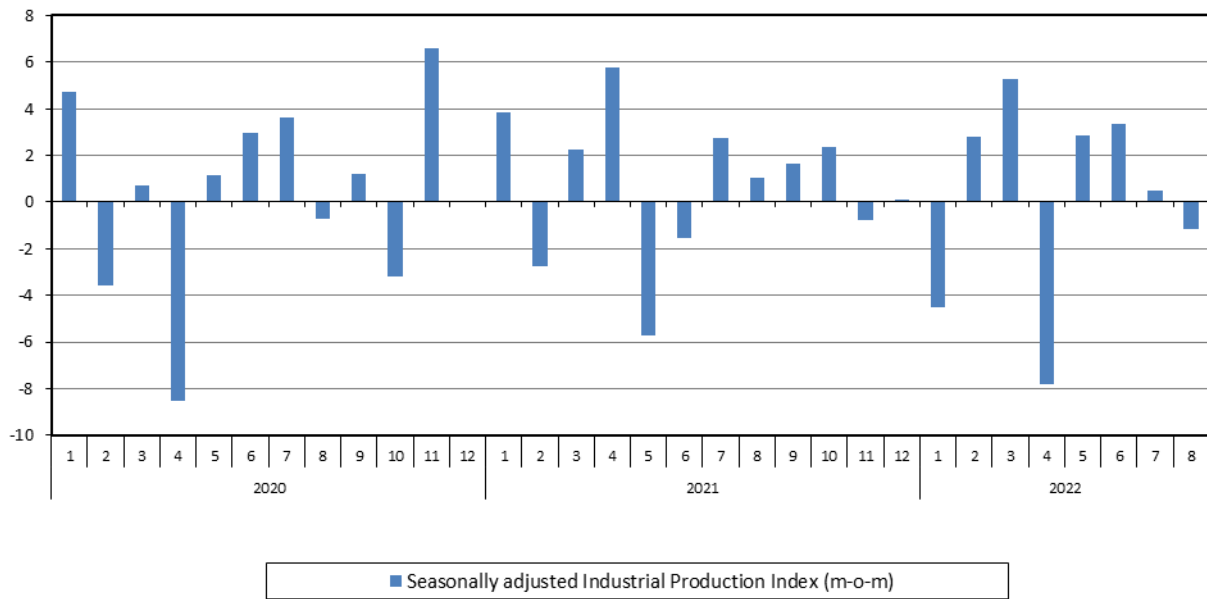
Decrease of:

- 4.5% in the Electricity Supply Index.
- 1.9% in the Mining and Quarrying Index.
- 1.2% in the Manufacturing Index.
- 0.9% in the Water Supply Index.

The following graphs depict the annual rates of change (y-o-y) of the Industrial Production Index and the Manufacturing Index, the evolution of the seasonally and non-seasonally adjusted Overall Industrial Production Index, as well as the monthly rates of change (m-o-m) of the seasonally adjusted index.



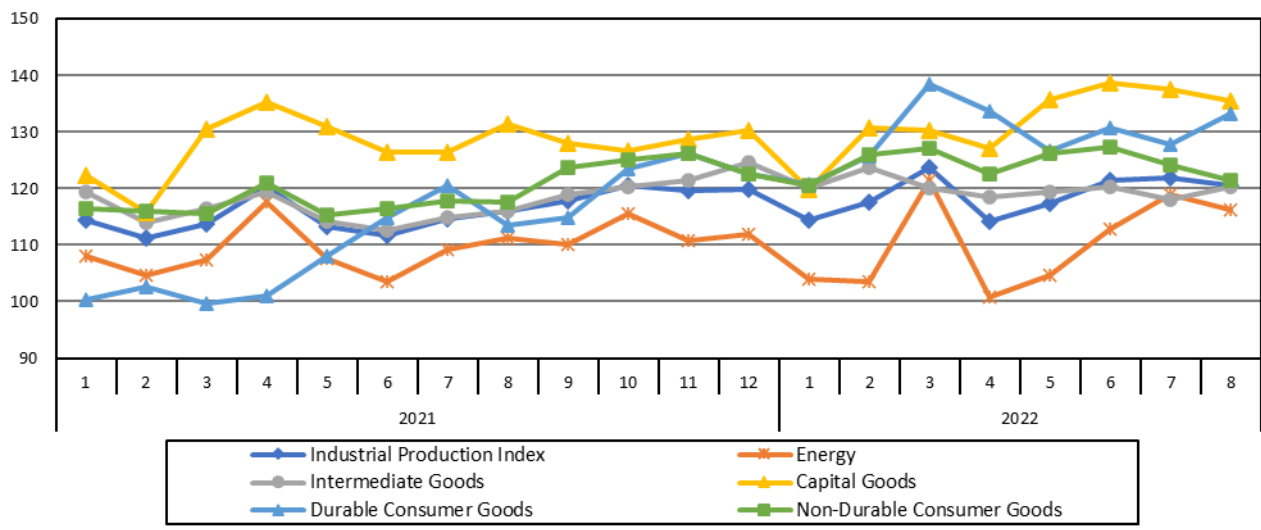
Graph 5. Evolution of the monthly rates of change (m-o-m) of the seasonally adjusted Industrial Production Index (%)



It should be noted that the time series with the seasonally adjusted indices is recalculated every time a new observation is added in the time series. Therefore, the seasonally adjusted data differ from the data published in the previous Press Release.

The following graphs depict the evolution of the seasonally adjusted Industrial Production Index and the Main Industrial Groupings, as well as the evolution of the Industrial Production Index and the Industrial Sections Indices.

Graph 6. Evolution of the seasonally adjusted Industrial Production Index and the Main Industrial Groupings Indices, January 2021 - August 2022 (2015=100.0)



Graph 7. Evolution of the Industrial Production Index and the Industrial Section Indices (2015=100.0)

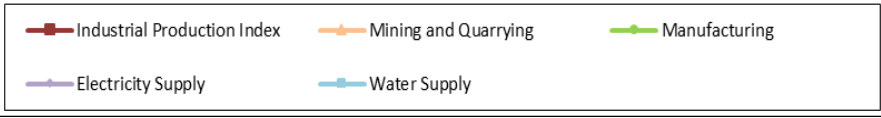
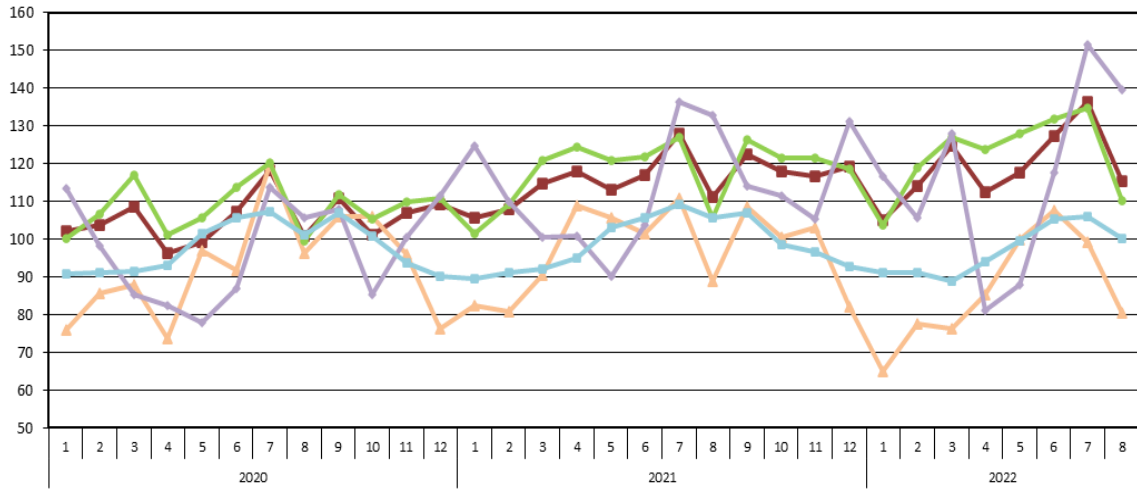


Table 1. Annual rates of change of the Industrial Production Index*(Working day adjusted data, according to the real number of working days)***Base year: 2015=100.0**

Code	Division	August			Rate of change (%)	
		2022*	2021	2020	2022/2021	2021/2020
OVERALL INDEX		115.46	111.09	100.78	3.9	10.2
B	MINING AND QUARRYING	80.39	89.02	96.24	-9.7	-7.5
05-06-09	Mining of coal and lignite – Extraction of crude petroleum and natural gas – Mining support service activities	23.05	30.45	42.55	-24.3	-28.4
07	Mining of metal ores	102.60	92.71	145.02	10.7	-36.1
08	Other mining and quarrying	81.17	96.36	87.35	-15.8	10.3
C	MANUFACTURING	110.29	105.78	99.47	4.3	6.3
10	Food	127.70	123.48	126.03	3.4	-2.0
11	Beverages	122.72	123.70	104.31	-0.8	18.6
12	Tobacco products	83.05	80.76	78.22	2.8	3.2
13	Textiles	71.18	70.23	82.55	1.4	-14.9
14	Wearing apparel	65.65	67.05	62.95	-2.1	6.5
15	Leather and related products	50.63	38.70	32.30	30.8	19.8
16	Wood and products of wood and cork, except furniture	73.41	67.55	66.28	8.7	1.9
17	Paper and paper products	98.78	98.02	90.39	0.8	8.4
18	Printing and reproduction of recorded products	95.13	88.24	75.63	7.8	16.7
19	Coke and refined petroleum products	121.13	113.93	103.78	6.3	9.8
20	Chemicals and chemical products	92.01	94.16	94.09	-2.3	0.1
21	Basic pharmaceutical products and pharmaceutical preparations	130.23	127.98	93.38	1.8	37.0
22	Rubber and plastic products	94.01	91.39	93.77	2.9	-2.5
23	Other non-metallic mineral products	105.33	107.25	94.01	-1.8	14.1
24	Basic metals	112.94	98.98	111.54	14.1	-11.3
25	Fabricated metal products, except machinery and equipment	101.54	102.94	90.73	-1.4	13.4
26	Computers, electronic and optical products	150.12	156.04	112.80	-3.8	38.3
27	Electrical equipment	110.32	85.72	71.58	28.7	19.7
28	Machinery and equipment n. e. c.	80.24	68.67	61.68	16.8	11.3
29	Motor vehicles, trailers and semi-trailers	125.40	85.90	91.24	46.0	-5.9
30	Other transport equipment	66.00	52.69	35.48	25.3	48.5
31	Furniture	99.86	81.34	84.13	22.8	-3.3
32	Other manufacturing	105.14	98.60	81.66	6.6	20.7
33	Repair and installation of machinery and equipment	68.39	64.12	62.13	6.7	3.2
D	ELECTRICITY SUPPLY	139.74	132.71	105.71	5.3	25.5
35	Electricity supply	139.74	132.71	105.71	5.3	25.5
E	WATER SUPPLY	100.31	105.62	101.16	-5.0	4.4
36	Water collection, treatment and supply	100.31	105.62	101.16	-5.0	4.4
MAIN INDUSTRIAL GROUPINGS						
1	Energy	129.65	123.84	104.58	4.7	18.4
2	Intermediate goods	98.47	95.00	93.81	3.7	1.3
3	Capital goods	95.03	91.99	76.24	3.3	20.7
4	Consumer Durables	94.29	80.43	75.57	17.2	6.4
5	Consumer Non-Durables	117.95	114.77	109.33	2.8	5.0

* Provisional data

Note: The indices are rounded up to two decimal digits when published and percentage changes up to one decimal digit when published.

Table 2. Average indices of the period January – August and rates of change (%) of the Industrial Production Index
(Working day adjusted data, according to the real number of working days)

					Base year: 2015=100.0	
Code	Division	Average indices of the period January-August			Rate of change (%)	
		2022*	2021	2020	2022/2021	2021/2020
OVERALL INDEX		119.13	114.44	104.54	4.1	9.5
B	MINING AND QUARRYING	86.44	96.22	90.99	-10.2	5.8
05-06-09	Mining of coal and lignite – Extraction of crude petroleum and natural gas – Mining support service activities	21.42	20.16	13.78	6.2	46.3
07	Mining of metal ores	118.76	126.06	147.31	-5.8	-14.4
08	Other mining and quarrying	84.88	97.13	82.96	-12.6	17.1
C	MANUFACTURING	122.27	116.43	108.00	5.0	7.8
10	Food	110.47	105.65	104.15	4.6	1.4
11	Beverages	111.55	107.61	91.80	3.7	17.2
12	Tobacco products	119.39	121.19	108.31	-1.5	11.9
13	Textiles	110.81	114.21	100.37	-3.0	13.8
14	Wearing apparel	79.43	67.98	58.72	16.8	15.8
15	Leather and related products	80.89	74.40	62.98	8.7	18.1
16	Wood and products of wood and cork. except furniture	107.52	93.91	94.14	14.5	-0.24
17	Paper and paper products	117.87	112.73	108.16	4.6	4.23
18	Printing and reproduction of recorded products	136.40	106.19	100.76	28.5	5.4
19	Coke and refined petroleum products	105.68	105.64	104.32	0.0	1.3
20	Chemicals and chemical products	125.81	128.86	126.28	-2.4	2.0
21	Basic pharmaceutical products and pharmaceutical preparations	223.58	201.57	176.98	10.9	13.9
22	Rubber and plastic products	125.91	122.20	114.81	3.0	6.4
23	Other non-metallic mineral products	121.81	118.06	98.60	3.2	19.7
24	Basic metals	130.46	122.25	117.75	6.7	3.8
25	Fabricated metal products. except machinery and equipment	136.03	137.92	117.33	-1.4	17.5
26	Computers. electronic and optical products	201.85	181.09	145.85	11.5	24.2
27	Electrical equipment	139.77	116.04	91.81	20.4	26.4
28	Machinery and equipment n. e. c.	120.94	107.75	93.17	12.2	15.6
29	Motor vehicles. trailers and semi-trailers	146.86	104.42	101.69	40.6	2.7
30	Other transport equipment	70.66	67.32	54.30	5.0	24.0
31	Furniture	143.40	118.39	106.56	21.1	11.1
32	Other manufacturing	125.69	118.66	94.76	5.9	25.2
33	Repair and installation of machinery and equipment	90.06	81.01	82.85	11.2	-2.2
D	ELECTRICITY SUPPLY	115.98	112.39	95.48	3.2	17.7
35	Electricity supply	115.98	112.39	95.48	3.2	17.7
E	WATER SUPPLY	97.01	98.87	97.78	-1.9	1.1
36	Water collection. treatment and supply	97.01	98.87	97.78	-1.9	1.1
MAIN INDUSTRIAL GROUPINGS						
1	Energy	110.61	108.68	98.28	1.8	10.6
2	Intermediate goods	120.20	116.00	107.04	3.6	8.4
3	Capital goods	125.11	120.53	103.90	3.8	16.0
4	Consumer Durables	127.55	106.14	92.45	20.2	14.8
5	Consumer Non-Durables	126.60	119.01	110.94	6.4	7.3

* Provisional data

Note: The indices are rounded up to two decimal digits when published and percentage changes up to one decimal digit when published.

Table 3. Monthly rate of change of the Industrial Production Index
(Working day adjusted data, according to the real number of working days)

Base year: 2015=100.0

Code	Division	August 2022*	July 2022**	Rate of change (%) August 2022 / July 2022
OVERALL INDEX		115.46	136.29	-15.3
B	MINING AND QUARRYING	80.39	99.23	-19.0
05-06-09	Mining of coal and lignite – Extraction of crude petroleum and natural gas – Mining support service activities	23.05	20.36	13.2
07	Mining of metal ores	102.60	127.00	-19.2
08	Other mining and quarrying	81.17	101.27	-19.8
C	MANUFACTURING	110.29	134.61	-18.1
10	Food	127.70	116.79	9.3
11	Beverages	122.72	141.16	-13.1
12	Tobacco products	83.05	129.99	-36.1
13	Textiles	71.18	113.56	-37.3
14	Wearing apparel	65.65	94.35	-30.4
15	Leather and related products	50.63	113.65	-55.5
16	Wood and products of wood and cork. except furniture	73.41	122.83	-40.2
17	Paper and paper products	98.78	116.86	-15.5
18	Printing and reproduction of recorded products	95.13	156.43	-39.2
19	Coke and refined petroleum products	121.13	111.31	8.8
20	Chemicals and chemical products	92.01	131.40	-30.0
21	Basic pharmaceutical products and pharmaceutical preparations	130.23	271.09	-52.0
22	Rubber and plastic products	94.01	131.34	-28.4
23	Other non-metallic mineral products	105.33	128.85	-18.3
24	Basic metals	112.94	128.24	-11.9
25	Fabricated metal products. except machinery and equipment	101.54	160.38	-36.7
26	Computers. electronic and optical products	150.12	259.23	-42.1
27	Electrical equipment	110.32	147.22	-25.1
28	Machinery and equipment n. e. c.	80.24	143.76	-44.2
29	Motor vehicles. trailers and semi-trailers	125.40	158.32	-20.8
30	Other transport equipment	66.00	96.39	-31.5
31	Furniture	99.86	161.76	-38.3
32	Other manufacturing	105.14	153.39	-31.5
33	Repair and installation of machinery and equipment	68.39	100.98	-32.3
D	ELECTRICITY SUPPLY	139.74	151.47	-7.7
35	Electricity supply	139.74	151.47	-7.7
E	WATER SUPPLY	100.31	105.84	-5.2
36	Water collection. treatment and supply	100.31	105.84	-5.2
MAIN INDUSTRIAL GROUPINGS				
1	Energy	129.65	133.89	-3.2
2	Intermediate goods	98.47	126.99	-22.5
3	Capital goods	95.03	151.36	-37.2
4	Consumer Durables	94.29	147.59	-36.1
5	Consumer Non-Durables	117.95	141.87	-16.9

* Provisional data ** Revised data

Note: The indices are rounded up to two decimal digits when published and percentage changes up to one decimal digit when published.

Table 4. Monthly rate of change of the seasonally adjusted Industrial Production Index

Base year: 2015=100.0

Code	Division	August 2022	July 2022	Rate of change (%) August 2022 /July 2022
OVERALL INDEX		120.54	121.93	-1.1
B	MINING AND QUARRYING	83.47	85.07	-1.9
05-06-09	Mining of coal and lignite – Extraction of crude petroleum and natural gas – Mining support service activities	-	-	-
07	Mining of metal ores	111.96	119.06	-6.0
08	Other mining and quarrying	82.44	82.58	-0.2
C	MANUFACTURING	121.74	123.21	-1.2
10	Food	108.03	108.56	-0.5
11	Beverages	103.86	102.86	1.0
12	Tobacco products	99.09	130.59	-24.1
13	Textiles	113.02	110.57	2.2
14	Wearing apparel	75.91	83.98	-9.6
15	Leather and related products	92.18	93.07	-1.0
16	Wood and products of wood and cork. except furniture	106.25	109.95	-3.4
17	Paper and paper products	116.43	117.34	-0.8
18	Printing and reproduction of recorded products	130.94	157.26	-16.7
19	Coke and refined petroleum products	118.43	112.51	5.3
20	Chemicals and chemical products	124.72	122.03	2.2
21	Basic pharmaceutical products and pharmaceutical preparations	235.03	222.67	5.6
22	Rubber and plastic products	122.85	121.52	1.1
23	Other non-metallic mineral products	120.09	119.06	0.9
24	Basic metals	134.70	127.64	5.5
25	Fabricated metal products. except machinery and equipment	136.79	137.47	-0.5
26	Computers. electronic and optical products	200.58	255.74	-21.6
27	Electrical equipment	156.22	144.76	7.9
28	Machinery and equipment n. e. c.	128.88	131.26	-1.8
29	Motor vehicles. trailers and semi-trailers	191.05	152.53	25.3
30	Other transport equipment	96.53	84.71	14.0
31	Furniture	152.35	142.59	6.8
32	Other manufacturing	139.40	135.16	3.1
33	Repair and installation of machinery and equipment	95.52	102.47	-6.8
D	ELECTRICITY SUPPLY	119.62	125.19	-4.5
35	Electricity supply	119.62	125.19	-4.5
E	WATER SUPPLY	94.95	95.84	-0.9
36	Water collection. treatment and supply	94.95	95.84	-0.9
MAIN INDUSTRIAL GROUPINGS				
1	Energy	116.13	118.85	-2.3
2	Intermediate goods	120.34	118.13	1.9
3	Capital goods	135.47	137.53	-1.5
4	Consumer Durables	133.23	127.83	4.2
5	Consumer Non-Durables	121.44	124.21	-2.2

Notes:

1. *The indices are rounded up to two decimal digits when published and percentage changes up to one decimal digit when published.*
2. *The whole time-series with seasonally adjusted indices is recalculated every time a new observation is added in the time-series.*
3. *The composed index of divisions 05-06-09 is not seasonally adjusted.*

Table 5. Evolution of the Overall Industrial Production Index*(Working day adjusted data, according to the real number of working days)***Base year: 2015=100.0**

Year and month	Overall Index	Monthly rate of change (%)	Annual rate of change (%)	12-month average index (moving average)	Rate of change of the 12-month average index (%)
2020: 1	102.17	-2.9	-0.6	107.52	-1.0
2	103.80	1.6	-2.9	107.26	-1.4
3	108.53	4.6	0.03	107.27	-1.3
4	96.26	-11.3	-10.8	106.30	-2.4
5	99.25	3.1	-8.2	105.56	-3.1
6	107.19	8.0	-4.6	105.13	-3.4
7	118.36	10.4	-0.1	105.12	-3.3
8	100.78	-14.8	-3.9	104.78	-3.6
9	110.70	9.8	-2.1	104.58	-3.9
10	101.05	-8.7	-3.2	104.30	-4.1
11	107.02	5.9	8.9	105.03	-2.7
12	109.29	2.1	3.8	105.37	-2.0
Annual average	105.37				
2021: 1	105.66	-3.3	3.4	105.66	-1.7
2	107.96	2.2	4.0	106.00	-1.2
3	114.62	6.2	5.6	106.51	-0.7
4	118.04	3.0	22.6	108.33	1.9
5	113.24	-4.1	14.1	109.49	3.7
6	116.88	3.2	9.0	110.30	4.9
7	128.03	9.5	8.2	111.11	5.7
8	111.09	-13.2	10.2	111.97	6.9
9	122.60	10.4	10.7	112.96	8.0
10	117.96	-3.8	16.7	114.36	9.6
11	116.61	-1.1	9.0	115.14	9.6
12	119.36	2.4	9.2	116.00	10.1
Annual average	116.00				
2022*: 1	105.02	-12.0	-0.6	115.95	9.7
2	114.01	8.6	5.6	116.45	9.9
3	124.67	9.3	8.8	117.29	10.1
4	112.55	-9.7	-4.7	116.83	7.9
5	117.75	4.6	4.0	117.21	7.0
6	127.33	8.1	8.9	118.08	7.1
7	136.29	7.0	6.5	118.77	6.9
8	115.46	-15.3	3.9	119.13	6.4

* Provisional data

Note: The indices are rounded up to two decimal digits when published and percentage changes up to one decimal digit when published.

Table 6. Monthly evolution of the seasonally adjusted Overall Industrial Production Index and Main Industrial Groupings

Base year: 2015=100.0

Year and month	Overall Index		Energy		Intermediate goods		Capital goods		Consumer durables		Consumer non-durables		
	Index	Monthly rate of change (%)	Index	Monthly rate of change (%)	Index	Monthly rate of change (%)	Index	Monthly rate of change (%)	Index	Monthly rate of change (%)	Index	Monthly rate of change (%)	
2020:	1	110.78	4.8	101.06	7.0	114.24	5.6	124.20	6.3	122.22	12.0	115.73	1.5
	2	106.81	-3.6	96.59	-4.4	111.50	-2.4	117.81	-5.1	112.81	-7.7	112.32	-2.9
	3	107.56	0.7	99.22	2.7	112.40	0.8	109.20	-7.3	95.96	-14.9	114.03	1.5
	4	98.42	-8.5	102.50	3.3	89.38	-20.5	101.24	-7.3	53.24	-44.5	102.06	-10.5
	5	99.51	1.1	97.65	-4.7	99.50	11.3	99.68	-1.5	69.40	30.4	103.25	1.2
	6	102.46	3.0	95.84	-1.9	104.73	5.3	107.13	7.5	97.05	39.8	107.74	4.4
	7	106.22	3.7	98.68	3.0	111.25	6.2	118.63	10.7	116.01	19.5	107.65	-0.1
	8	105.53	-0.7	94.12	-4.6	114.58	3.0	109.73	-7.5	107.60	-7.3	111.06	3.2
	9	106.51	0.9	96.70	2.7	111.20	-2.9	114.69	4.5	104.59	-2.8	112.64	1.4
	10	103.21	-3.1	87.33	-9.7	111.88	0.6	119.02	3.8	101.02	-3.4	111.63	-0.9
	11	109.95	6.5	102.46	17.3	116.36	4.0	118.99	0.0	97.71	-3.3	112.25	0.6
	12	109.93	-0.01	103.52	1.0	115.71	-0.6	113.92	-4.3	97.89	0.2	112.74	0.4
	Annual average	105,57		97,97		109,39		112,85		97,96		110,26	
2021:	1	114.31	4.0	108.01	4.3	119.51	3.3	122.33	7.4	100.34	2.5	116.49	3.3
	2	111.15	-2.8	104.68	-3.1	113.87	-4.7	115.68	-5.4	102.57	2.2	116.08	-0.35
	3	113.64	2.2	107.26	2.5	116.39	2.2	130.47	12.8	99.76	-2.7	115.48	-0.5
	4	120.19	5.8	117.47	9.5	119.47	2.6	135.27	3.7	101.07	1.3	121.04	4.8
	5	113.32	-5.7	107.54	-8.5	114.10	-4.5	130.89	-3.2	108.08	6.9	115.33	-4.7
	6	111.59	-1.5	103.55	-3.7	112.69	-1.2	126.33	-3.5	114.80	6.2	116.39	0.9
	7	114.68	2.8	109.14	5.4	114.89	2.0	126.34	0.0	120.44	4.9	117.85	1.3
	8	115.90	1.1	111.13	1.8	116.07	1.0	131.46	4.0	113.45	-5.8	117.57	-0.2
	9	117.82	1.7	110.10	-0.9	118.99	2.5	128.05	-2.6	114.86	1.2	123.69	5.2
	10	120.59	2.4	115.60	5.0	120.33	1.1	126.55	-1.2	123.58	7.6	125.09	1.1
	11	119.64	-0.8	110.88	-4.1	121.38	0.9	128.67	1.7	126.23	2.1	126.17	0.9
	12	119.78	0.1	112.02	1.0	124.64	2.7	130.38	1.3	122.54	-2.9	122.47	-2.9
	Annual average	116,05		109,78		117,69		127,70		112,31		119,47	
2022:	1	114.38	-4.5	104.06	-7.1	120.14	-3.6	119.90	-8.0	120.84	-1.4	120.58	-1.5
	2	117.57	2.8	103.42	-0.6	123.61	2.9	130.84	9.1	125.69	4.0	126.07	4.6
	3	123.79	5.3	121.48	17.5	119.97	-2.9	130.40	-0.3	138.43	10.1	127.06	0.8
	4	114.15	-7.8	100.71	-17.1	118.45	-1.3	127.15	-2.5	133.73	-3.4	122.64	-3.5
	5	117.42	2.9	104.55	3.8	119.30	0.7	135.82	6.8	126.67	-5.3	126.20	2.9
	6	121.33	3.3	112.71	7.8	120.34	0.9	138.80	2.2	130.69	3.2	127.44	1.0
	7	121.93	0.5	118.85	5.4	118.13	-1.8	137.53	-0.9	127.83	-2.2	124.21	-2.5
	8	120.54	-1.1	116.13	-2.3	120.34	1.9	135.47	-1.5	133.23	4.2	121.44	-2.2

Notes:

1. The indices are rounded up to two decimal digits when published and percentage changes up to one decimal digit when published.
2. The whole time-series with seasonally adjusted indices is recalculated every time a new observation is added in the time-series.

METHODOLOGICAL NOTES

Generally	The Industrial Production Index (IPI) in Greece has been compiled by the Hellenic Statistical Authority (ELSTAT) from 1959 onwards.
Purpose of the index	The objective of the index is to compare the magnitude (volume) of the output in the current month in the mining and quarrying, manufacturing, electricity and water supply divisions with the corresponding output of a given fixed period, which is considered as base period. The Industrial Production Index shows the evolution of the value added of the production factors cost, at constant prices.
Legal framework	The compilation of the IPI is based on the framework of the implementation of Council Regulation (EC) No 1165/1998 concerning short-term statistics (STS-R). Furthermore, the IPI is governed by Regulation (EC) No 1893/2006 of the European Parliament and of the Council, by Commission Regulation (EC) No 656/2007, by Council Regulation (EC) No 451/2008, by Regulation (EU) No 2019/2152 of the European Parliament and of the Council on European business statistics, as well as Commission Implementing Regulation (EU) No 2020/1197 laying down technical specifications and arrangements pursuant to Regulation (EU) No 2019/2152.
Reference period	Month.
Base year	2015=100.0.
Revision	The IPI is a fixed base index. The Industrial Production Index was currently revised with new base year 2015 (2015=100.0) according to the provisions of Council Regulation No 1165/1998 concerning short-term statistics. Short-term indices are revised every five (5) years, particularly in calendar years ending in 0 or 5.
Statistical classifications	At the level of branches of economic activities, the statistical classification of economic activities NACE Rev.2 of EU was used (Regulation No 1893/2006), while at the level of main industrial groupings, the allocation of two-digit and three-digit NACE Rev. 2 headings to categories of aggregate classification was used, in accordance with Council Regulation No 656/2007. At product level, the statistical classification CPA 2008 of EU was used, according to Council Regulation No 451/2008.
Geographical coverage	The index covers the whole Country.
Coverage of economic activities	The index covers all the sections of industry, the main industrial groups, as well as all levels of economic activity.
Statistical survey	The data are collected from a sample of 1.263 enterprises. The survey covers 325 products and the measurement of the surveyed products is made in terms of output quantities or in terms of production value or turnover, according to the specific features in each branch of economic activity.
Seasonal adjustment	Seasonal adjustment is the procedure followed to remove the impact of seasonality on the time-series (i.e. the impact of monthly effects, e.g. holidays, tourist period etc.), in order to improve comparability over time. The method applied is TRAMO-SEATS with the use of JDemetra+ 2.0.0. For the seasonal adjustment of the Industrial Production Index at 2-digit level of NACE Rev.2, at section level (B – Mining and Quarrying, C – Manufacturing, D – Electricity and E – Water Supply) and for the Main Industrial Groupings (MIGs), the direct approach is applied, namely each time-series is seasonally adjusted independently. For the overall Industrial Production Index, the indirect approach is applied, with the seasonally adjusted IPI being computed by aggregating the seasonally adjusted MIGs using appropriate weights.
Publication of data	The revised IPI with the new base year 2015 (2015=100.0) is released since July 2019, with May 2019 as the first reference month. Data with base year 2015=100.0 are available from January 2000 onwards.
References	More information about the methodology concerning the compilation and calculation of the index and the time series are available on the website of the Hellenic Statistical Authority (ELSTAT) (http://www.statistics.gr/en/statistics/-/publication/DKT21/).