



## PRESS RELEASE

### ARRIVALS AND NIGHTS SPENT IN HOTELS, SIMILAR ESTABLISHMENTS, SHORT STAY ACCOMMODATION ESTABLISHMENTS AND TOURIST CAMPSITES: JANUARY – SEPTEMBER 2022 (provisional data)

According to the provisional results of the survey on Arrivals and Nights Spent in Hotels, Similar Establishments and Tourist Campsites and of the survey on Arrivals and Nights Spent in Short-stay accommodation establishments, conducted by the Hellenic Statistical Authority (ELSTAT), for the total of the establishments, an increase of 87.0% is recorded in arrivals (Table 1, Graph 1) and of 89.1% in nights spent (Table 2, Graph 1), for the period of January – September 2022 compared with the corresponding period of 2021.

More specifically, during the period of January-September 2022, arrivals of non-residents recorded an increase of 102.0% and of residents of 51.0%, while nights spent of non-residents recorded an increase of 100.8% and of residents of 40.8%, compared with the same period of 2021 (Tables 1 and 2, Graphs 3 and 4).

During the period of January – September 2022, the largest share of arrivals and nights spent in the total of tourist accommodation establishments, was recorded by non-residents, i.e. 76.3% of the total of arrivals and 85.6% of the total of nights spent (Graph 5).

For the same period, the average number of nights spent per person amounted to 4.3 nights. More specifically, the average number of nights spent was 4.8 nights for non-residents and 2.6 nights for residents (Graph 6).

The total occupancy of the bed places in hotels and similar establishments (excluding tourist campsites and short-stay accommodation establishments), which is based on the nights spent compared to the bed places that were in operation, amounted to 58.0% during the period of January – September 2022, compared with 45.7% of the corresponding period of 2021 (Table 3, Graph 7).

**Information on methodological issues:**

Sectoral Statistics Division  
Tourism and Cultural Statistics Section  
Head of the Section: Eleni Papadopoulou  
Tel: +30 213 135 2168  
e-mail: [e.papadopoulou@statistics.gr](mailto:e.papadopoulou@statistics.gr)

**Information for data provision:**

Tel. +30 213 135 2022, 2308, 2310  
e-mail: [data.dissem@statistics.gr](mailto:data.dissem@statistics.gr)

**Table1. Arrivals of residents and non-residents at hotels, similar establishments, short stay accommodation establishments and tourist campsites, by month, January – September 2021 and 2022<sup>(1)</sup>**

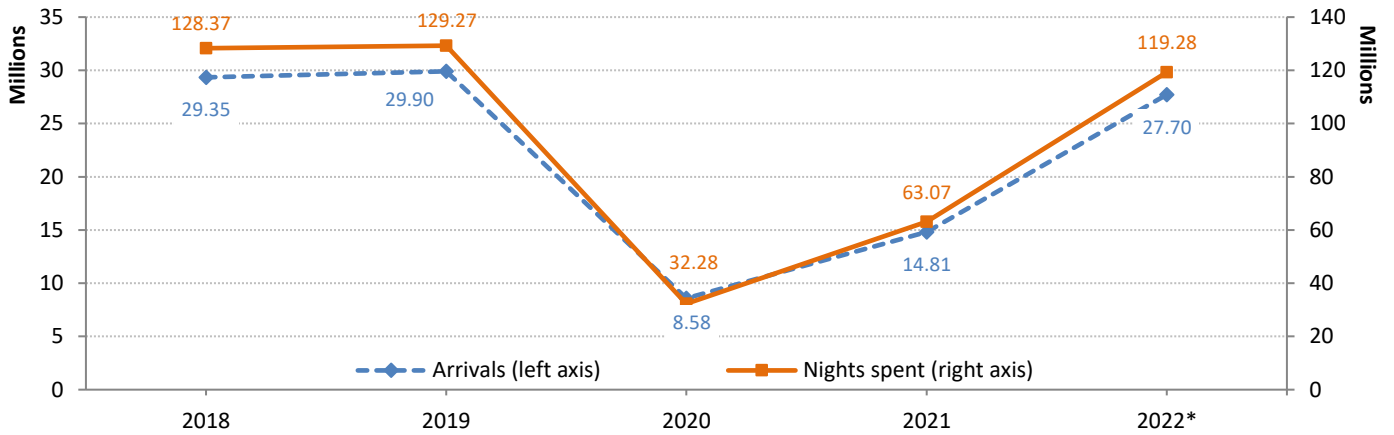
Reference period	2021					2022					Change 2022/2021		
	Total	Hotels and similar establishments and tourist campsites		Short-stay accommodation establishments		Total	Hotels and similar establishments and tourist campsites		Short-stay accommodation establishments		Total establishments		
		Residents	Non-residents	Residents	Non-residents		Residents	Non-residents	Residents	Non-residents	Total	Residents	Non-residents
Jan- Sept	14,814,331	3,416,251	8,615,922	936,115	1,846,043	27,703,745	5,251,642	16,751,395	1,321,839	4,378,869	87.0%	51.0%	102.0%
January	146,591	109,080	25,972	9,443	2,096	431,420	290,460	91,991	38,695	10,274	194.3%	177.7%	264.3%
February	169,046	129,441	27,373	10,102	2,130	480,544	317,903	118,888	33,562	10,191	184.3%	151.9%	337.5%
March	207,799	151,404	40,554	12,970	2,871	747,595	411,407	280,948	41,867	13,373	259.8%	175.8%	577.8%
April	193,278	132,099	46,981	11,198	3,000	1,803,184	569,255	1,062,591	60,846	110,492	832.9%	339.7%	2247.1%
May	605,147	223,465	309,627	27,995	44,060	3,287,949	542,398	2,339,141	64,162	342,248	443.3%	141.2%	658.1%
June	1,921,447	526,610	1,046,371	125,346	223,120	4,532,577	656,380	2,985,788	157,285	733,124	135.9%	24.8%	192.9%
July	3,765,280	709,521	2,308,141	242,101	505,517	5,618,463	818,759	3,376,930	297,554	1,125,220	49.2%	17.3%	60.0%
August	4,438,395	872,542	2,577,946	373,255	614,652	6,265,707	1,010,552	3,529,024	469,850	1,256,281	41.2%	18.8%	49.9%
September	3,367,348	562,089	2,232,957	123,705	448,597	4,536,306	634,528	2,966,094	158,018	777,666	34.7%	15.6%	39.6%

**Table 1. Nights spent of residents and non-residents at hotels, similar establishments, short stay accommodation establishments and tourist campsites, by month, January – September 2021 and 2022<sup>(1)</sup>**

Reference period	2021					2022					Change 2022/2021		
	Total	Hotels and similar establishments and tourist campsites		Short stay accommodation establishments		Total	Hotels and similar establishments and tourist campsites		Short stay accommodation establishments		Total establishments		
		Residents	Non-residents	Residents	Non-residents		Residents	Non-residents	Residents	Non-residents	Total	Residents	Non-residents
Jan- Sept	63,066,300	9,041,693	41,093,982	3,177,274	9,753,351	119,280,753	12,575,989	79,385,577	4,623,044	22,696,143	89.1%	40.8%	100.8%
January	380,183	235,584	98,112	38,522	7,965	904,074	556,443	210,431	103,154	34,046	137.8%	140.6%	130.5%
February	408,460	268,794	99,391	33,490	6,785	996,696	592,967	273,354	99,905	30,470	144.0%	129.2%	186.2%
March	509,539	323,592	127,147	48,113	10,687	1,507,511	647,659	663,157	159,745	36,950	195.9%	117.2%	407.9%
April	591,166	365,839	172,082	39,659	13,586	4,929,256	1,086,884	3,154,016	204,053	484,303	733.8%	218.4%	1859.6%
May	1,883,756	442,526	1,179,392	73,440	188,398	12,820,797	1,092,339	9,984,786	211,010	1,532,662	580.6%	152.6%	742.0%
June	7,273,925	1,181,750	4,616,560	370,356	1,105,259	19,750,508	1,527,839	14,162,774	540,345	3,519,550	171.5%	33.3%	209.0%
July	16,705,834	2,060,063	11,114,783	881,936	2,649,052	27,524,214	2,301,977	17,904,024	1,100,650	6,217,563	64.8%	15.7%	75.3%
August	20,317,996	2,865,201	12,855,053	1,257,280	3,340,462	30,089,498	3,312,533	18,334,632	1,605,166	6,837,167	48.1%	19.3%	55.4%
September	14,995,441	1,298,344	10,831,462	434,478	2,431,157	20,758,199	1,457,348	14,698,403	599,016	4,003,432	38.4%	18.7%	41.0%

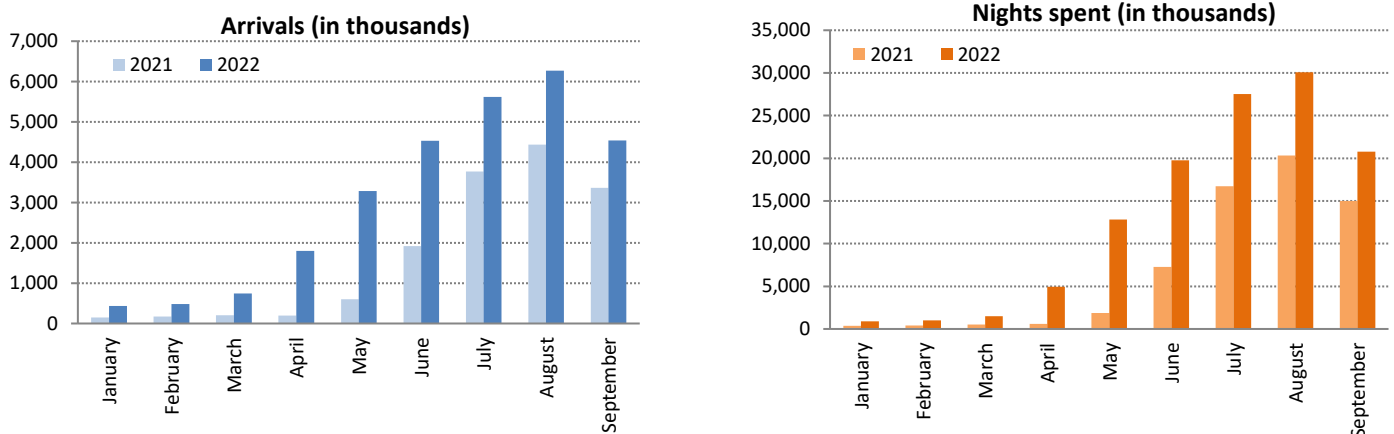
<sup>(1)</sup>Provisional data.

**Graph 1. Arrivals and nights spent at hotels, similar establishments, short stay accommodation establishments and tourist campsites, January – September 2018 – 2022<sup>(1)</sup>**



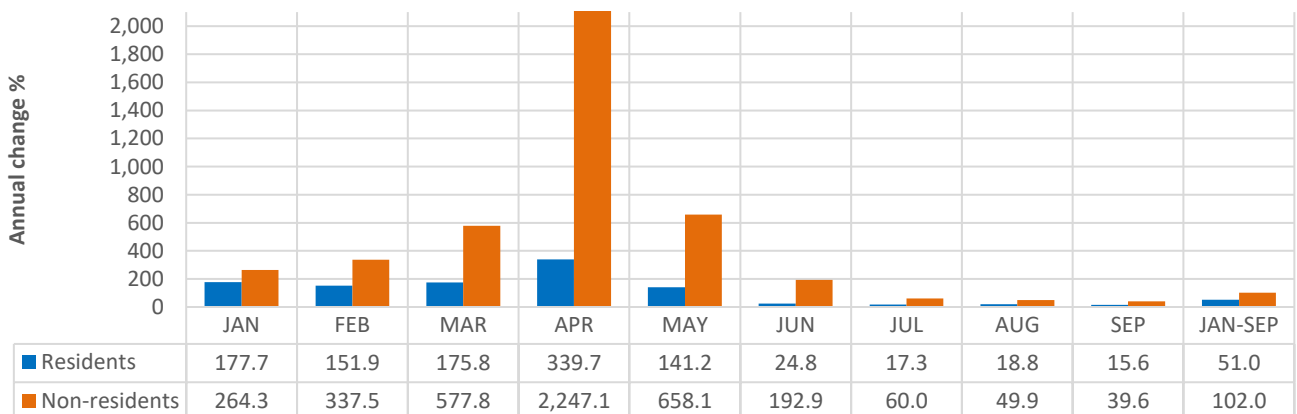
<sup>(1)</sup> Provisional data.

**Graph 2. Arrivals and nights spent at hotels, similar establishments, short stay accommodation establishments and tourist campsites, by month, January – September 2021 and 2022<sup>(1)</sup>**



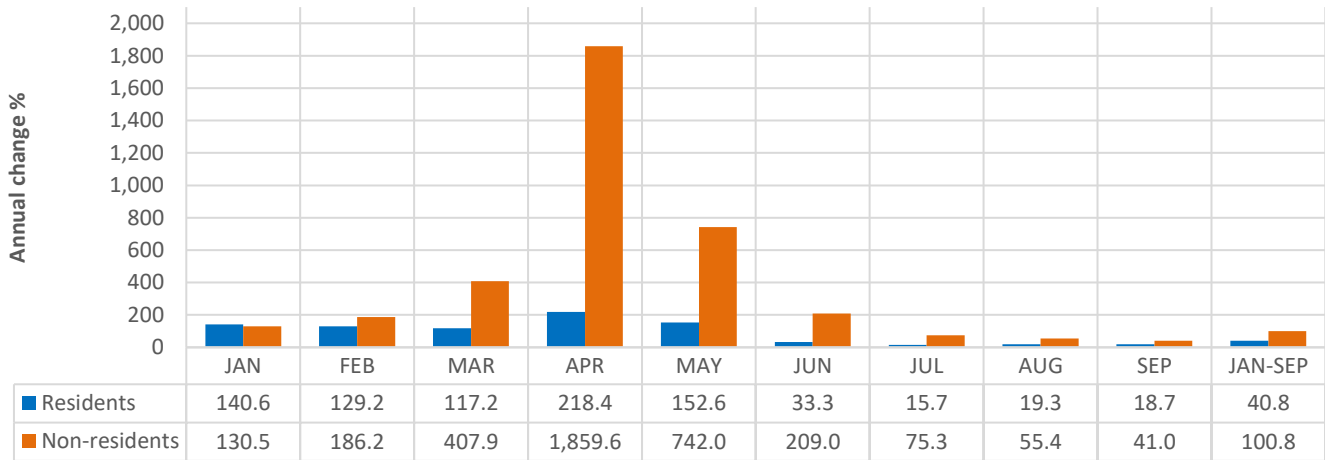
<sup>(1)</sup> Provisional data.

**Graph 3. Annual change 2022/2021 (%) of arrivals at hotels, similar establishments, short-stay accommodation establishments and tourist campsites, by month, January – September 2022<sup>(1)</sup>**



<sup>(1)</sup> Provisional data.

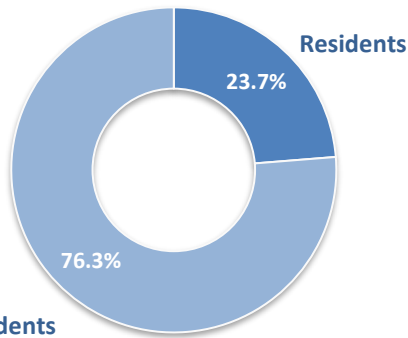
**Graph 4. Annual change 2022/2021 (%) of nights spent at hotels, similar establishments, short stay accommodation establishments and tourist campsites, by month, January – September 2022<sup>(1)</sup>**



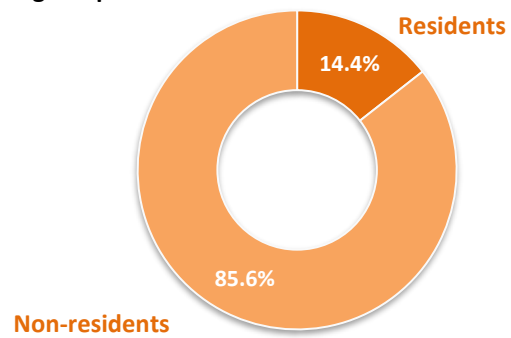
<sup>(1)</sup> Provisional data.

**Graph 5. Arrivals and nights spent by residents and non-residents at hotels, similar establishments, short stay accommodation establishments and tourist campsites, January – September 2022<sup>(1)</sup>**

**Arrivals**

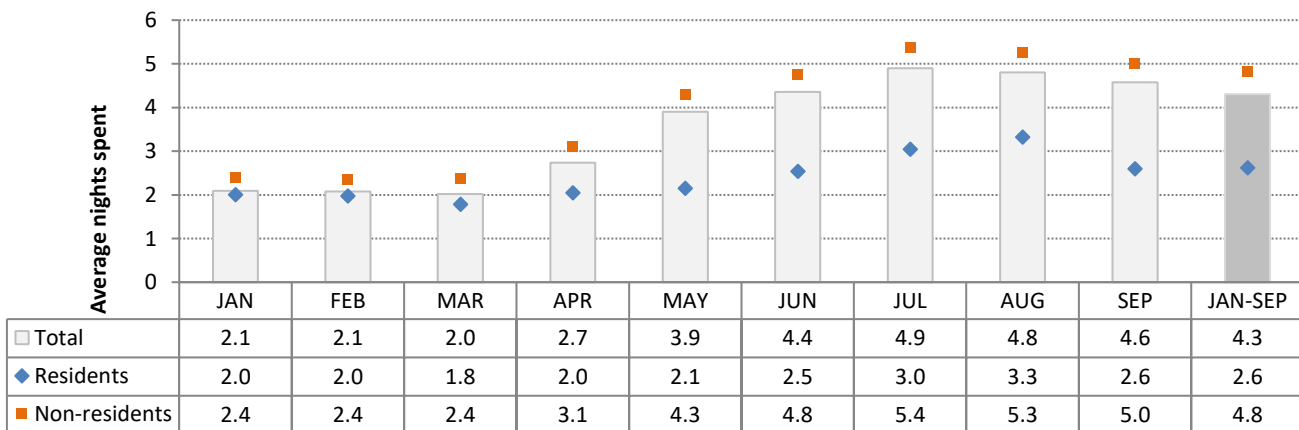


**Nights spent**



<sup>(1)</sup> Provisional data.

**Graph 6. Average nights spent per guest at hotels, similar establishments, short stay accommodation establishments and tourist campsites, by month, January – September 2022<sup>(1)</sup>**

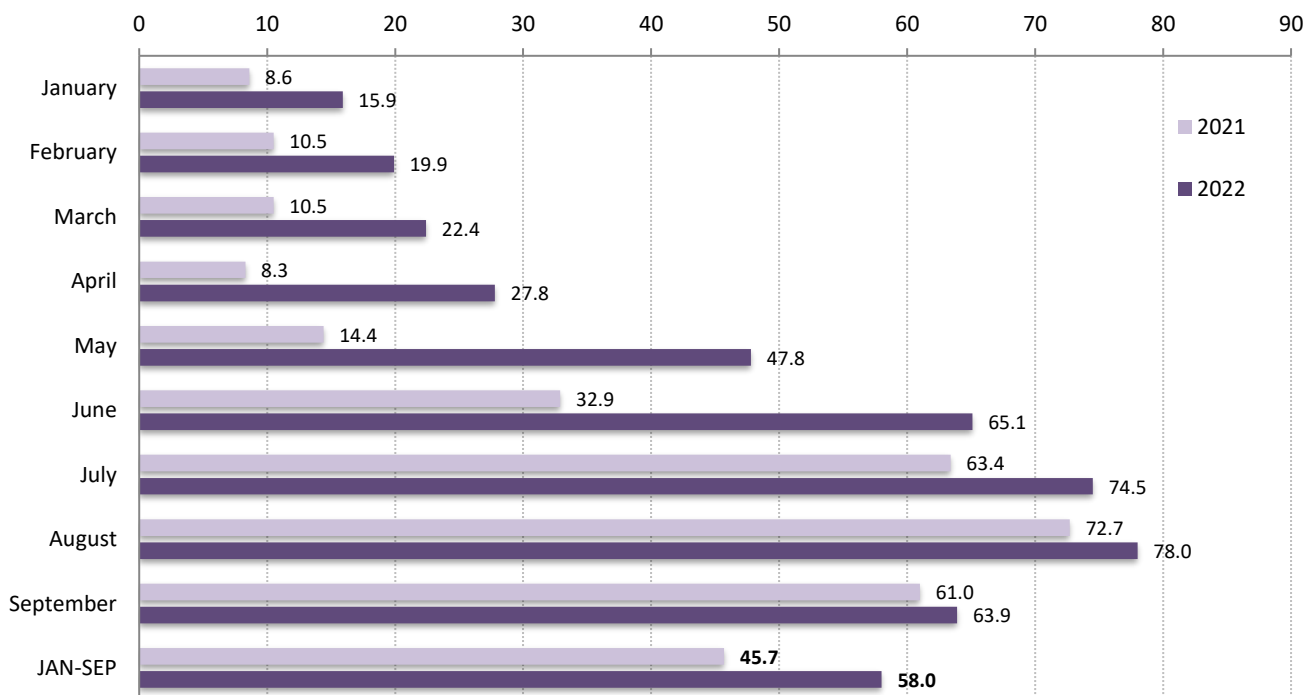


<sup>(1)</sup> Provisional data.

**Table 3. Occupancy (%) of bed-places in hotels and similar establishments, by month, January – September 2021 and 2022<sup>(1)(2)</sup>**

Month	2021	2022
January - September	45.7	58.0
January	8.6	15.9
February	10.5	19.9
March	10.5	22.4
April	8.3	27.8
May	14.4	47.8
June	32.9	65.1
July	63.4	74.5
August	72.7	78.0
September	61.0	63.9

**Graph 7. Occupancy (%) of bed-places in hotels and similar establishments, by month, January – September 2021 and 2022<sup>(1)(2)</sup>**



<sup>(1)</sup> Provisional data.

<sup>(2)</sup> The occupancy of bed-places refers to the bed-places that were in operation for each reference period.

## EXPLANATORY NOTES

<b>Arrivals and nights spent at hotels, similar establishments, tourist campsites and short-stay accommodation establishments</b>	<p>Data on arrivals and nights spent at hotels, similar establishments and tourist campsites are collected from a monthly census survey. Each establishment fills in a questionnaire, for every month that it is in operation. It is mandatory for all hotels, similar establishments and tourist campsites to participate in the survey.</p> <p>Data on the arrivals and nights spent in short-stay accommodation establishments (NACE Rev.2, 55.2), until reference year 2019, were collected through a sample survey. Since reference year 2020, due to the conditions formed by the Coronavirus disease (Covid-19), data were collected from the total of short-stay accommodation establishments in operation, for each month.</p>
<b>Legal frame</b>	The survey is conducted pursuant to Regulation 692/2011 of the European Parliament and of the Council.
<b>Reference unit</b>	Data refer to all establishments (hotels, similar establishments and tourist campsites) that are registered in the Hellenic Chamber of Hotels, which amounts approximately to 10,000 hotels and 300 campsites, while for short-stay accommodation establishments (NACE Rev. 2, 55.2), data derive from the Statistical Register of short-stay accommodation establishments (rooms for rent) of ELSTAT, which is regularly updated by data of the Ministry of Tourism and includes 27,000 establishments.
<b>Coverage</b>	The survey results refer to 100% of the total of the available bed-places.
<b>Data dissemination</b>	Final annual data are published in July of the following year. As regards the annual data there is a press release and detailed tables.
<b>Reference period</b>	January - September 2022.
<b>Definitions</b>	<p><u>Resident</u>: Every person, regardless of citizenship, that has resided in Greece for at least a year, or has arrived in Greece with the intention to reside in the country for at least 1 year.</p> <p><u>Non-resident</u>: Every person, regardless of citizenship, that is not considered to be resident.</p> <p><u>Arrivals</u>: The arrivals at the establishments are calculated for every person separately. The data refer to the total number of persons and not to the total number of rooms that were occupied. Only the persons that had at least one overnight stay at the establishment are counted.</p> <p><u>Nights spent</u>: The nights spent are calculated for every person separately. The data refer to the total number of nights spent by every person and not to the total number of nights spent in every room.</p> <p><u>Occupancy of bed-places</u>: The monthly occupancy of bed-places is calculated on the basis of the number of the bed-places, as reported by each hotel. The rate refers to the occupancy that was accomplished, as compared with the maximum occupancy that is expected according to the available bed-places.</p> <p>The occupancy of the period is the result of the average occupancy rates of every month of the period, weighted by the bed-places that were in operation for each month.</p>
<b>Methodology</b>	<p>For hotels, similar establishments and tourist campsites (NACE Rev. 2, 55.1 &amp; 55.3) data is collected through a census survey, which is conducted on a monthly basis. Data is compiled through the collection and processing of the relevant data submitted, via a specific questionnaire, by hotels, similar establishments and tourist campsites for each month of operation. The questionnaires are mostly submitted electronically, via ELSTAT's electronic application "Xenios Zeus" or, alternatively, for establishments that this is not possible, in paper form.</p> <p>The survey is based on the Statistical Register of hotels, similar establishments and tourist campsites, which is updated during the year, so that data refer to the actual number of accommodation establishments and campsites that are in operation.</p> <p>Non-response to the survey is addressed as follows:</p> <ol style="list-style-type: none"> <li>1. Regular reminders are sent out to the establishments that have not responded to the survey, for submitting data.</li> <li>2. For the low percentage of establishments, which despite the reminders have not responded to the survey, supplementary administrative data are used and statistical methods are applied for grossing-up of the results to the total of establishments.</li> </ol> <p>For short stay accommodation establishments (NACE Rev. 2, 55.2), until reference year 2019, data were collected through a sample survey with reference unit the short-stay accommodation establishment, through special electronic or paper questionnaires, that were submitted for each operational month. The data refer to arrivals and nights spent of residents and non-residents on a monthly basis by country of residence of the guests.</p> <p>The survey design (estimation of the sample size, selection of the sample units) was based on ELSTAT's Statistical Register of short-stay accommodation establishments, that is regularly updated by the according register of the Ministry of Tourism. For the survey design, the single stratified sampling method was applied. The stratification criteria of the short-stay accommodation establishments are: the Prefecture where the establishment is located, the class category of the establishment, the Degree of Urbanization (densely, intermediate and thinly populated area) of the Local Administrative Unit where the establishment is located and the size class of the establishment (based on the number of bedrooms).</p> <p>Since reference year 2020, due to the conditions formed by the Coronavirus disease (COVID-19), data is collected from the total of short-stay accommodation establishments in operation, for each month and additional sample survey is conducted to address non-response.</p>
<b>Data collection during the pandemic period of coronavirus disease (COVID-19)</b>	<p>For the compilation of the provisional data of arrivals and nights spent for the reference period, both data collected by the survey and administrative data sources were used. Specifically,</p> <ol style="list-style-type: none"> <li>a. the establishments in operation of the Register of hotels and tourist campsites, were identified on the basis of administrative data for the reference period.</li> </ol>

b. a survey was conducted on the afore-mentioned establishments

c. for the accommodation establishments that were in operation but did not respond to the survey, statistical methods were used for addressing non-response by grossing-up the collected data to the 100% of the total of the available bed-places.

Especially for short stay accommodation establishments (NACE Rev.2, 55.2), for the compilation of data of arrivals and nights spent, the target population was stratified by the following stratification criteria: Prefecture that the establishment is located, Degree of Urbanization (densely, intermediate and thinly populated areas), coastal or non-coastal areas, class of the establishment (1 key, 2 keys, 3 or 4 keys and rest of establishments) and size of the establishments based on the number of rooms (0-5 rooms, 6-9 rooms, 10-16 rooms, 17 rooms and over).

It is noted that arrivals and nights spent of establishments that were in operation for special purposes such as the accommodation of people in quarantine, public servants that were transferred for special reasons, etc., are not recorded, as they are not in the scope of the survey (Regulation EU 692/2011).

**References** More information on the survey results on hotels, similar establishments and tourist campsites at a more detailed geographical level is available on the website of ELSTAT at: <http://www.statistics.gr/en/statistics/-/publication/STO12/>