



PRESS RELEASE

INDUSTRIAL PRODUCTION INDEX: July 2022, y-o-y increase of 7.0%

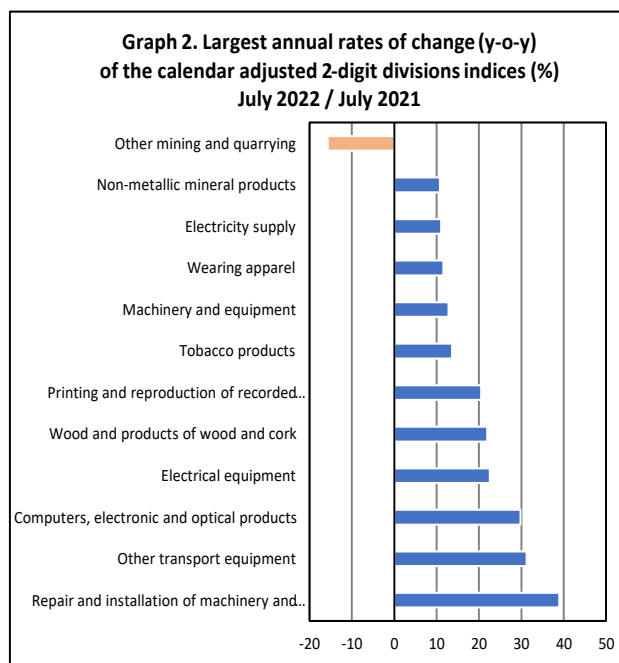
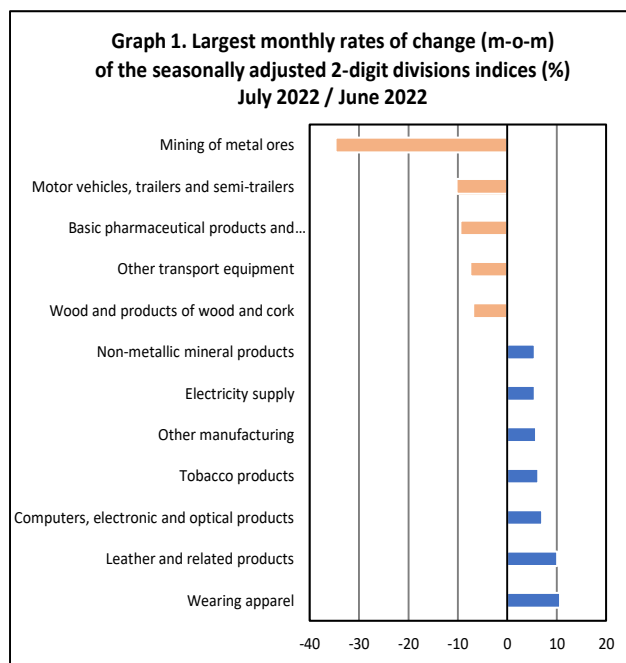
The Hellenic Statistical Authority announces the Industrial Production Index (IPI) with base year 2015=100.0 for July 2022, on the basis of provisional and working day adjusted data, as follows:

The Overall Industrial Production Index in July 2022 recorded an increase of 7.0% compared with July 2021. The Overall IPI in July 2021 increased by 8.1% compared with the corresponding index in July 2020 (Table 1).

The average Overall Industrial Production Index for the period from January to July 2022 recorded an increase of 4.1% compared with the average IPI of the period from January to July 2021 (Table 2).

The seasonally adjusted Overall Industrial Production Index in July 2022 recorded an increase of 0.9% compared with the corresponding index of June 2022 (Table 4).

The index of wearing apparel division recorded the greatest percentage increase, whereas the index of mining of metal ores division showed the greatest percentage decrease in July 2022 compared with June 2022. Comparing the indices of July 2022 with the corresponding indices of July 2021, the greatest percentage increase was recorded in repair and installation of machinery and equipment division, while the highest percentage decrease was recorded in other mining and quarrying division (Tables 1 and 4).



Information for methodological issues:

Business Statistics Division
Manufacture-Construction Indices and Industrial Products Section
Head of the Section: Diamantaki Aikaterini
Tel: +30 213 135 2056
E-mail: a.diamantaki@statistics.gr

Information for data provision:

Tel: +30 213 135 2022, 2308, 2310
E-mail: data.dissem@statistics.gr

Evolution of the Industrial Production Index in July 2022

I. Annual changes: July 2022 / July 2021 (Table 1)

The 7.0% increase of the working day adjusted Overall IPI in July 2022, compared with the corresponding index in July 2021, is due to the annual changes of the sub-indices in the following industrial sections:

1. Increase of:

- 11.1% in the Electricity Supply Index.
- 6.5% in the Manufacturing Index. The increase was mainly the result of the annual changes of the sub-indices in the following 2-digit divisions: repair and installation of machinery and equipment, other transport equipment, computers, electronic and optical products, electrical equipment, wood and products of wood and cork.

2. Decrease of:

- 0.6% in the Water Supply Index.
- 10.5% in the Mining and Quarrying Index. The increase was the result of the annual change of the sub-index in the following 2-digit division: other mining and quarrying.

II. Rates of change of the average index of the period January - July 2022 compared with the corresponding index of the period January - July 2021 (Table 2)

The 4.1% increase of the working day adjusted average Overall IPI in the 7-month period January - July 2022, compared with the corresponding index in January - July 2021, is due to the corresponding rates of change of the sub-indices in the following industrial sections:

1. Increase of:

- 5.1% in the Manufacturing Index.
- 2.8% in the Electricity Supply Index.

2. Decrease of:

- 1.0% in the Water Supply Index.
- 9.9% in the Mining and Quarrying Index.

III. Monthly changes: July 2022 / June 2022 (Table 4)

The 0.9% increase of the seasonally adjusted Overall IPI in July 2022, compared with the corresponding index in June 2022 is due to the monthly changes of the sub-indices in the following industrial sections:

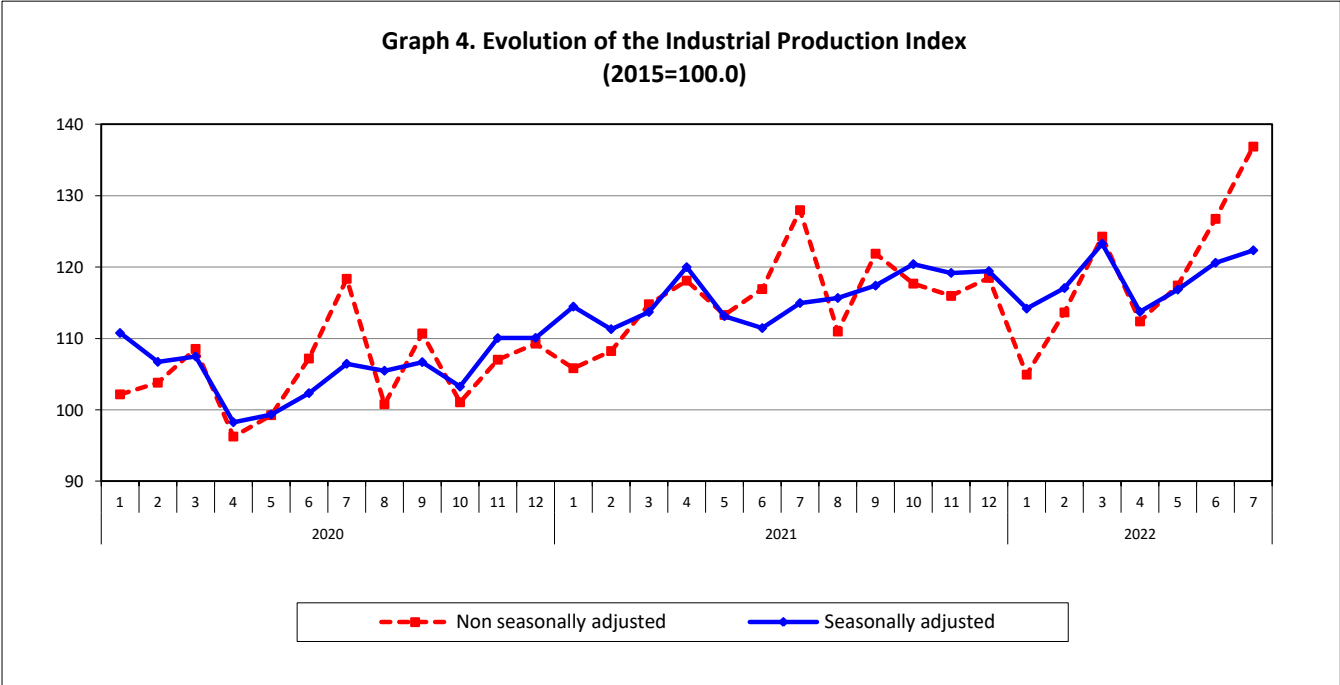
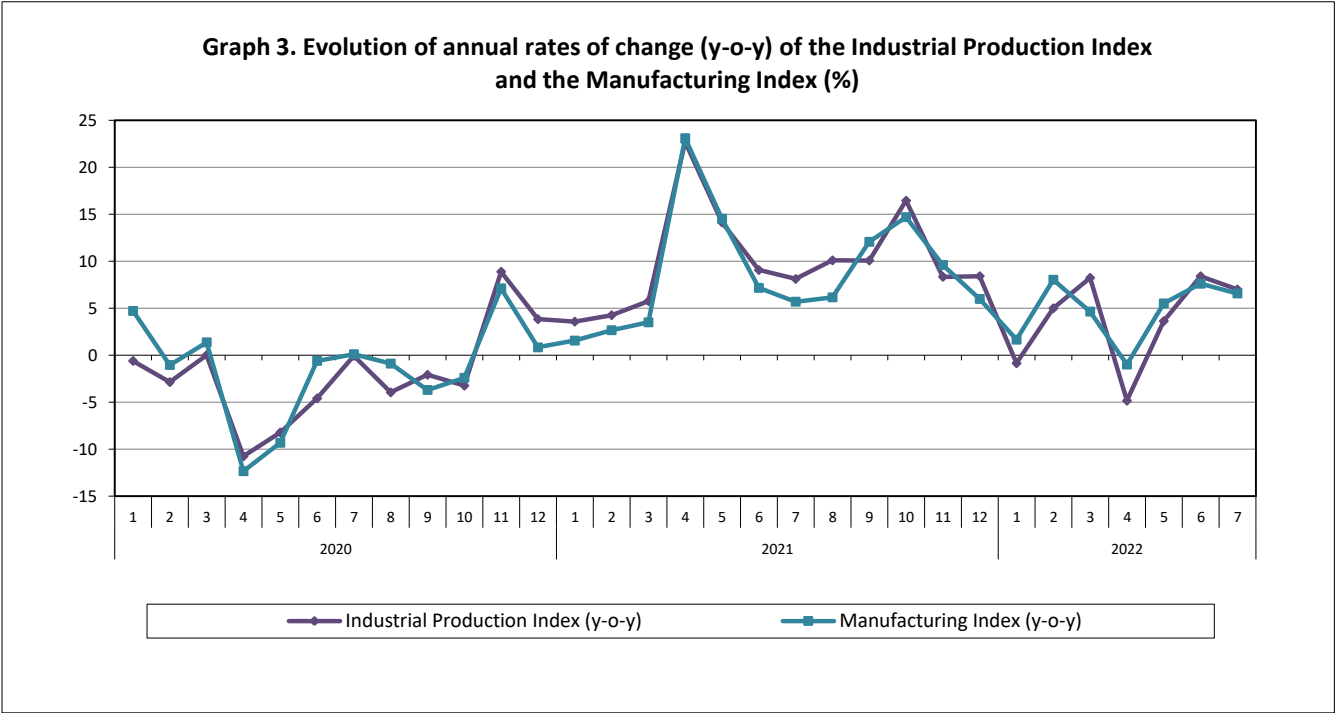
1. Increase of:

- 5.5% in the Electricity Supply Index.
- 1.3% in the Water Supply Index.

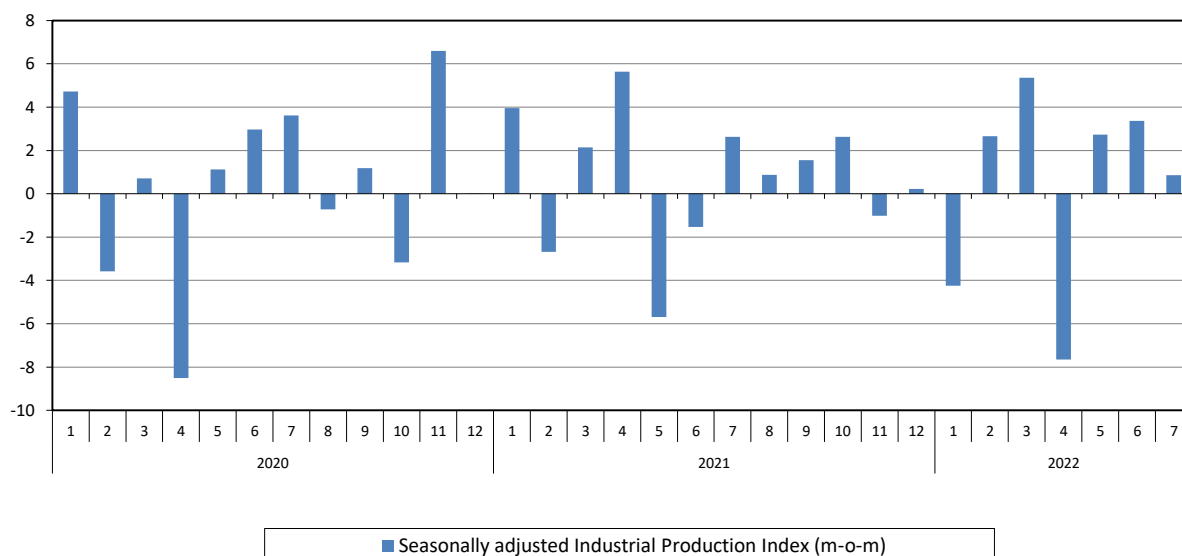
2. Decrease of:

- 0.6% in the Manufacturing Index.
- 10.5% in the Mining and Quarrying Index.

The following graphs depict the annual rates of change (y-o-y) of the Industrial Production Index and the Manufacturing Index, the evolution of the seasonally and non-seasonally adjusted Overall Industrial Production Index, as well as the monthly rates of change (m-o-m) of the seasonally adjusted index.



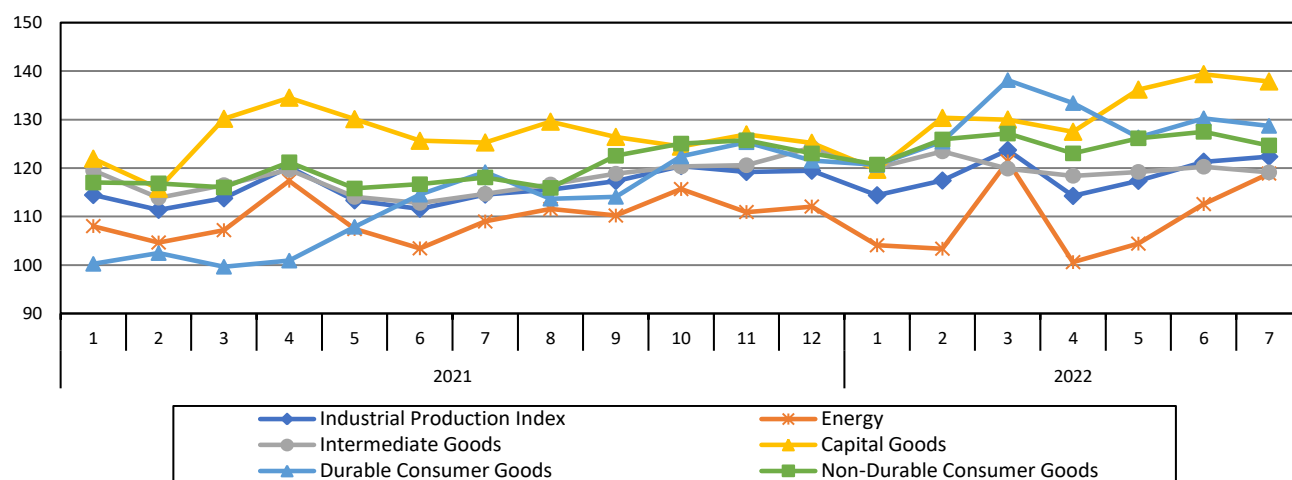
**Graph 5. Evolution of the monthly rates of change (m-o-m)
of the seasonally adjusted Industrial Production Index (%)**



It should be noted that the time series with the seasonally adjusted indices is recalculated every time a new observation is added in the time series. Therefore, the seasonally adjusted data differ from the data published in the previous Press Release.

The following graphs depict the evolution of the seasonally adjusted Industrial Production Index and the Main Industrial Groupings, as well as the evolution of the Industrial Production Index and the Industrial Sections Indices.

**Graph 6. Evolution of the seasonally adjusted Industrial Production Index
and the Main Industrial Groupings Indices, January 2021 - June 2022
(2015=100.0)**



Graph 7. Evolution of the Industrial Production Index and the Industrial Section Indices (2015=100.0)

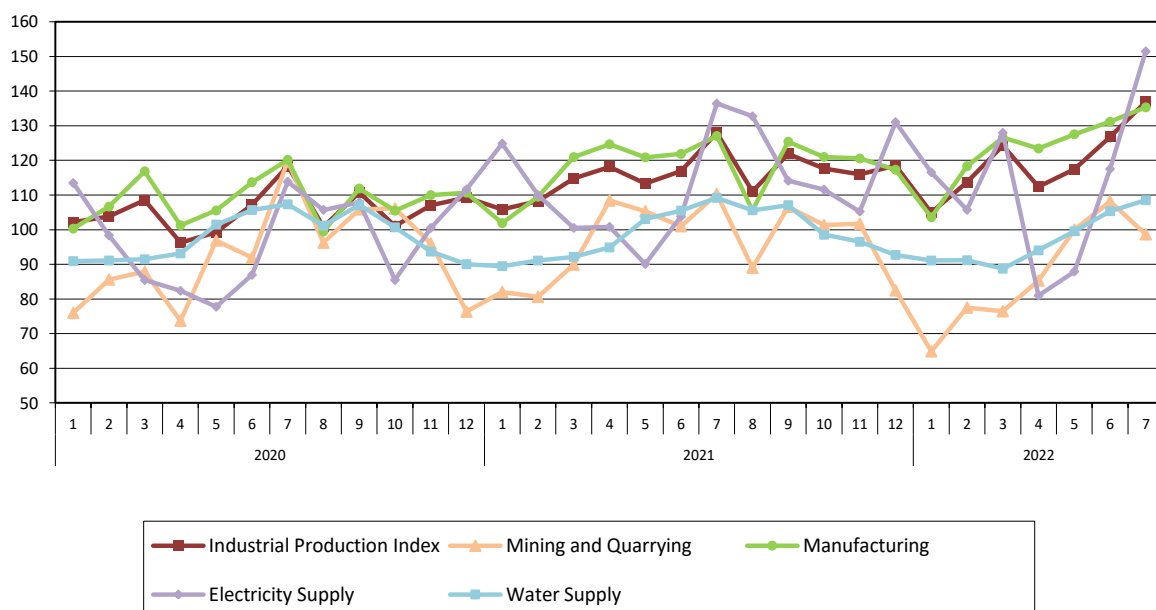


Table 1. Annual rates of change of the Industrial Production Index*(Working day adjusted data, according to the real number of working days)***Base year: 2015=100.0**

Code		Division	July			Rate of change (%)	
			2022*	2021*	2020	2022/2021	2021/2020
OVERALL INDEX			136.88	127.97	118.36	7.0	8.1
B	MINING AND QUARRYING		98.66	110.29	119.77	-10.5	-7.9
05-06-09	Mining of coal and lignite – Extraction of crude petroleum and natural gas – Mining support service activities		20.36	18.44	25.88	10.4	-28.8
07	Mining of metal ores		127.00	123.83	159.31	2.6	-22.3
08	Other mining and quarrying		100.42	119.14	119.97	-15.7	-0.7
C	MANUFACTURING		135.31	127.04	120.18	6.5	5.7
10	Food		118.75	111.23	108.66	6.8	2.4
11	Beverages		143.49	134.25	125.55	6.9	6.9
12	Tobacco products		129.99	114.43	109.35	13.6	4.6
13	Textiles		114.58	123.84	114.84	-7.5	7.8
14	Wearing apparel		94.34	84.56	68.55	11.6	23.4
15	Leather and related products		114.89	109.16	51.30	5.2	112.8
16	Wood and products of wood and cork, except furniture		123.68	101.40	127.75	22.0	-20.6
17	Paper and paper products		115.52	116.95	105.43	-1.2	10.9
18	Printing and reproduction of recorded products		132.13	109.68	99.26	20.5	10.5
19	Coke and refined petroleum products		111.31	102.31	105.47	8.8	-3.0
20	Chemicals and chemical products		127.98	133.69	139.89	-4.3	-4.4
21	Basic pharmaceutical products and pharmaceutical preparations		271.18	269.09	218.31	0.8	23.3
22	Rubber and plastic products		130.42	133.98	126.80	-2.7	5.7
23	Other non-metallic mineral products		138.93	125.41	112.45	10.8	11.5
24	Basic metals		127.72	121.39	123.02	5.2	-1.3
25	Fabricated metal products, except machinery and equipment		163.05	163.67	150.34	-0.4	8.9
26	Computers, electronic and optical products		259.27	199.74	152.36	29.8	31.1
27	Electrical equipment		146.90	119.85	105.60	22.6	13.5
28	Machinery and equipment n. e. c.		145.67	129.10	108.03	12.8	19.5
29	Motor vehicles, trailers and semi-trailers		161.65	152.91	104.06	5.7	47.0
30	Other transport equipment		98.64	75.16	78.27	31.2	-4.0
31	Furniture		163.27	154.57	151.17	5.6	2.2
32	Other manufacturing		155.47	145.63	111.72	6.8	30.4
33	Repair and installation of machinery and equipment		100.98	72.67	104.37	39.0	-30.4
D	ELECTRICITY SUPPLY		151.47	136.40	113.84	11.1	19.8
35	Electricity supply		151.47	136.40	113.84	11.1	19.8
E	WATER SUPPLY		108.49	109.20	107.33	-0.6	1.7
36	Water collection, treatment and supply		108.49	109.20	107.33	-0.6	1.7
MAIN INDUSTRIAL GROUPINGS							
1	Energy		134.15	122.60	110.34	9.4	11.1
2	Intermediate goods		128.33	123.63	119.92	3.8	3.1
3	Capital goods		152.13	137.04	127.71	11.0	7.3
4	Consumer Durables		149.97	139.10	133.58	7.8	4.1
5	Consumer Non-Durables		142.13	134.89	123.59	5.4	9.1

* Provisional data

Note: The indices are rounded up to two decimal digits when published and percentage changes up to one decimal digit when published.

Table 2. Average indices of the period January – July and rates of change (%) of the Industrial Production Index
(Working day adjusted data, according to the real number of working days)

					Base year: 2015=100.0		
Code		Division	Average indices of the period January-July			Rate of change (%)	
			2022*	2021*	2020	2022/2021	2021/2020
OVERALL INDEX			119.76	115.02	105.08	4.1	9.5
B	MINING AND QUARRYING		87.24	96.78	90.24	-9.9	7.3
05-06-09	Mining of coal and lignite – Extraction of crude petroleum and natural gas – Mining support service activities		21.18	18.69	9.67	13.4	93.3
07	Mining of metal ores		121.07	130.83	147.63	-7.5	-11.4
08	Other mining and quarrying		85.31	96.55	82.33	-11.6	17.3
C	MANUFACTURING		124.10	118.11	109.21	5.1	8.1
10	Food		108.75	103.58	101.03	5.0	2.5
11	Beverages		110.31	105.67	90.01	4.4	17.4
12	Tobacco products		124.58	126.97	112.61	-1.9	12.8
13	Textiles		116.62	120.49	102.92	-3.2	17.1
14	Wearing apparel		81.40	68.11	58.12	19.5	17.2
15	Leather and related products		85.40	79.50	67.37	7.4	18.0
16	Wood and products of wood and cork, except furniture		112.55	97.68	98.12	15.2	-0.45
17	Paper and paper products		120.59	114.83	110.70	5.0	3.74
18	Printing and reproduction of recorded products		128.92	108.75	104.35	18.5	4.2
19	Coke and refined petroleum products		103.48	104.46	104.40	-0.9	0.1
20	Chemicals and chemical products		130.02	133.76	130.87	-2.8	2.2
21	Basic pharmaceutical products and pharmaceutical preparations		237.53	212.08	188.92	12.0	12.3
22	Rubber and plastic products		129.99	126.94	117.82	2.4	7.7
23	Other non-metallic mineral products		125.61	119.61	99.26	5.0	20.5
24	Basic metals		132.88	125.59	118.64	5.8	5.9
25	Fabricated metal products, except machinery and equipment		141.34	143.25	121.13	-1.3	18.3
26	Computers, electronic and optical products		209.27	184.73	150.57	13.3	22.7
27	Electrical equipment		143.93	120.36	94.70	19.6	27.1
28	Machinery and equipment n. e. c.		127.03	113.33	97.67	12.1	16.0
29	Motor vehicles, trailers and semi-trailers		150.40	107.07	103.19	40.5	3.8
30	Other transport equipment		77.34	68.59	56.99	12.8	20.4
31	Furniture		149.83	123.52	109.77	21.3	12.5
32	Other manufacturing		129.03	121.52	96.64	6.2	25.8
33	Repair and installation of machinery and equipment		93.30	83.46	85.81	11.8	-2.7
D	ELECTRICITY SUPPLY		112.59	109.49	94.02	2.8	16.5
35	Electricity supply		112.59	109.49	94.02	2.8	16.5
E	WATER SUPPLY		96.92	97.90	97.29	-1.0	0.6
36	Water collection, treatment and supply		96.92	97.90	97.29	-1.0	0.6
MAIN INDUSTRIAL GROUPINGS							
1	Energy		107.93	106.51	97.38	1.3	9.4
2	Intermediate goods		123.43	119.05	108.93	3.7	9.3
3	Capital goods		130.20	124.53	107.85	4.5	15.5
4	Consumer Durables		132.64	109.73	94.86	20.9	15.7
5	Consumer Non-Durables		127.79	119.93	111.17	6.6	7.9

* Provisional data

Note: The indices are rounded up to two decimal digits when published and percentage changes up to one decimal digit when published.

Table 3. Monthly rate of change of the Industrial Production Index
(Working day adjusted data, according to the real number of working days)

Base year: 2015=100.0

Code	Division	July 2022*	June 2022**	Rate of change (%) July 2022 / June 2022
OVERALL INDEX		136.88	127.33	7.5
B	MINING AND QUARRYING	98.66	107.94	-8.6
05-06-09	Mining of coal and lignite – Extraction of crude petroleum and natural gas – Mining support service activities	20.36	8.30	145.4
07	Mining of metal ores	127.00	195.75	-35.1
08	Other mining and quarrying	100.42	92.37	8.7
C	MANUFACTURING	135.31	131.96	2.5
10	Food	118.75	108.63	9.3
11	Beverages	143.49	136.49	5.1
12	Tobacco products	129.99	133.42	-2.6
13	Textiles	114.58	122.11	-6.2
14	Wearing apparel	94.34	66.97	40.9
15	Leather and related products	114.89	75.73	51.7
16	Wood and products of wood and cork, except furniture	123.68	134.10	-7.8
17	Paper and paper products	115.52	120.93	-4.5
18	Printing and reproduction of recorded products	132.13	136.91	-3.5
19	Coke and refined petroleum products	111.31	108.20	2.9
20	Chemicals and chemical products	127.98	136.28	-6.1
21	Basic pharmaceutical products and pharmaceutical preparations	271.18	258.20	5.0
22	Rubber and plastic products	130.42	132.20	-1.3
23	Other non-metallic mineral products	138.93	133.74	3.9
24	Basic metals	127.72	136.50	-6.4
25	Fabricated metal products, except machinery and equipment	163.05	161.86	0.7
26	Computers, electronic and optical products	259.27	240.50	7.8
27	Electrical equipment	146.90	150.89	-2.6
28	Machinery and equipment n. e. c.	145.67	144.80	0.6
29	Motor vehicles, trailers and semi-trailers	161.65	190.20	-15.0
30	Other transport equipment	98.64	105.61	-6.6
31	Furniture	163.27	181.72	-10.1
32	Other manufacturing	155.47	143.23	8.5
33	Repair and installation of machinery and equipment	100.98	103.70	-2.6
D	ELECTRICITY SUPPLY	151.47	117.52	28.9
35	Electricity supply	151.47	117.52	28.9
E	WATER SUPPLY	108.49	105.33	3.0
36	Water collection, treatment and supply	108.49	105.33	3.0
MAIN INDUSTRIAL GROUPINGS				
1	Energy	134.15	113.04	18.7
2	Intermediate goods	128.33	130.98	-2.0
3	Capital goods	152.13	150.68	1.0
4	Consumer Durables	149.97	161.39	-7.1
5	Consumer Non-Durables	142.13	133.91	6.1

* Provisional data ** Revised data

Note: The indices are rounded up to two decimal digits when published and percentage changes up to one decimal digit when published.

Table 4. Monthly rate of change of the seasonally adjusted Industrial Production Index

Base year: 2015=100.0

Code	Division	July 2022	June 2022	Rate of change (%) July 2022 / June 2022
OVERALL INDEX		122.35	121.30	0.9
B	MINING AND QUARRYING	84.97	94.95	-10.5
05-06-09	Mining of coal and lignite – Extraction of crude petroleum and natural gas – Mining support service activities			-
07	Mining of metal ores	119.58	183.35	-34.8
08	Other mining and quarrying	81.96	79.38	3.3
C	MANUFACTURING	123.82	124.58	-0.6
10	Food	109.91	111.37	-1.3
11	Beverages	103.39	102.27	1.1
12	Tobacco products	131.12	123.37	6.3
13	Textiles	109.53	111.18	-1.5
14	Wearing apparel	85.91	77.64	10.7
15	Leather and related products	91.27	82.90	10.1
16	Wood and products of wood and cork, except furniture	111.07	119.31	-6.9
17	Paper and paper products	116.15	117.98	-1.5
18	Printing and reproduction of recorded products	134.88	129.82	3.9
19	Coke and refined petroleum products	112.33	111.99	0.3
20	Chemicals and chemical products	119.40	125.66	-5.0
21	Basic pharmaceutical products and pharmaceutical preparations	222.94	246.32	-9.5
22	Rubber and plastic products	120.98	125.30	-3.4
23	Other non-metallic mineral products	127.47	120.78	5.5
24	Basic metals	126.87	131.28	-3.4
25	Fabricated metal products, except machinery and equipment	139.54	139.69	-0.1
26	Computers, electronic and optical products	257.41	240.43	7.1
27	Electrical equipment	143.26	140.35	2.1
28	Machinery and equipment n. e. c.	132.64	130.41	1.7
29	Motor vehicles, trailers and semi-trailers	155.08	172.82	-10.3
30	Other transport equipment	83.85	90.65	-7.5
31	Furniture	142.49	144.61	-1.5
32	Other manufacturing	136.20	128.70	5.8
33	Repair and installation of machinery and equipment	102.29	98.95	3.4
D	ELECTRICITY SUPPLY	125.06	118.49	5.5
35	Electricity supply	125.06	118.49	5.5
E	WATER SUPPLY	98.04	96.83	1.3
36	Water collection, treatment and supply	98.04	96.83	1.3
MAIN INDUSTRIAL GROUPINGS				
1	Energy	118.87	112.55	5.6
2	Intermediate goods	119.11	120.27	-1.0
3	Capital goods	137.85	139.37	-1.1
4	Consumer Durables	128.69	130.26	-1.2
5	Consumer Non-Durables	124.66	127.47	-2.2

Notes:

1. The indices are rounded up to two decimal digits when published and percentage changes up to one decimal digit when published.
2. The whole time-series with seasonally adjusted indices is recalculated every time a new observation is added in the time-series.
3. The composed index of divisions 05-06-09 is not seasonally adjusted.

Table 5. Evolution of the Overall Industrial Production Index

(Working day adjusted data, according to the real number of working days)

Base year: 2015=100.0

Year and month	Overall Index	Monthly rate of change (%)	Annual rate of change (%)	12-month average index (moving average)	Rate of change of the 12-month average index (%)
2020: 1	102.17	-2.9	-0.6	107.52	-1.0
2	103.80	1.6	-2.9	107.26	-1.4
3	108.53	4.6	0.03	107.27	-1.3
4	96.26	-11.3	-10.8	106.30	-2.4
5	99.25	3.1	-8.2	105.56	-3.1
6	107.19	8.0	-4.6	105.13	-3.4
7	118.36	10.4	-0.1	105.12	-3.3
8	100.78	-14.8	-3.9	104.78	-3.6
9	110.70	9.8	-2.1	104.58	-3.9
10	101.05	-8.7	-3.2	104.30	-4.1
11	107.02	5.9	8.9	105.03	-2.7
12	109.29	2.1	3.8	105.37	-2.0
Annual average	105.37				
2021*: 1	105.83	-3.2	3.6	105.67	-1.7
2	108.23	2.3	4.3	106.04	-1.1
3	114.80	6.1	5.8	106.56	-0.7
4	118.10	2.9	22.7	108.38	2.0
5	113.29	-4.1	14.1	109.55	3.8
6	116.92	3.2	9.1	110.36	5.0
7	127.97	9.5	8.1	111.17	5.7
8	110.97	-13.3	10.1	112.01	6.9
9	121.87	9.8	10.1	112.95	8.0
10	117.68	-3.4	16.5	114.33	9.6
11	115.96	-1.5	8.4	115.04	9.5
12	118.48	2.2	8.4	115.84	9.9
Annual average	115.84				
2022*: 1	105.10	-11.3	-0.7	115.78	9.6
2	113.92	8.4	5.3	116.26	9.6
3	124.62	9.4	8.6	117.08	9.9
4	112.73	-9.5	-4.5	116.63	7.6
5	117.71	4.4	3.9	117.00	6.8
6	127.33	8.2	8.9	117.86	6.8
7	136.88	7.5	7.0	118.61	6.7

* Provisional data

Note: The indices are rounded up to two decimal digits when published and percentage changes up to one decimal digit when published.

Table 6. Monthly evolution of the seasonally adjusted Overall Industrial Production Index and Main Industrial Groupings

Base year: 2015=100.0

Year and month		Overall Index		Energy		Intermediate goods		Capital goods		Consumer durables		Consumer non-durables	
		Index	Monthly rate of change (%)	Index	Monthly rate of change (%)	Index	Monthly rate of change (%)	Index	Monthly rate of change (%)	Index	Monthly rate of change (%)	Index	Monthly rate of change (%)
2020:	1	110.73	4.7	101.08	7.0	114.24	5.5	123.92	5.3	122.15	11.8	115.63	1.4
	2	106.77	-3.6	96.57	-4.5	111.52	-2.4	117.46	-5.2	112.75	-7.7	112.29	-2.9
	3	107.54	0.7	99.16	2.7	112.38	0.8	109.06	-7.1	95.92	-14.9	114.07	1.6
	4	98.39	-8.5	102.44	3.3	89.34	-20.5	101.01	-7.4	53.18	-44.6	102.12	-10.5
	5	99.50	1.1	97.56	-4.8	99.50	11.4	99.50	-1.5	69.32	30.3	103.36	1.2
	6	102.45	3.0	95.75	-1.9	104.71	5.2	106.83	7.4	96.88	39.7	107.91	4.4
	7	106.15	3.6	98.56	2.9	111.09	6.1	118.54	11.0	115.52	19.2	107.75	-0.1
	8	105.39	-0.7	94.39	-4.2	114.56	3.1	109.51	-7.6	107.85	-6.6	110.34	2.4
	9	106.64	1.2	96.77	2.5	111.24	-2.9	114.72	4.8	104.81	-2.8	112.94	2.4
	10	103.26	-3.2	87.35	-9.7	111.89	0.6	119.44	4.1	101.34	-3.3	111.61	-1.2
	11	110.07	6.6	102.49	17.3	116.52	4.1	119.24	-0.2	97.90	-3.4	112.41	0.7
	12	110.08	0.01	103.55	1.0	115.78	-0.6	115.77	-2.9	98.13	0.2	112.65	0.2
Annual average		105.58		97.97		109.40		112.92		97.98		110.26	
2021:	1	114.44	4.0	108.03	4.3	119.49	3.2	121.93	5.3	100.23	2.1	117.00	3.9
	2	111.37	-2.7	104.64	-3.1	113.89	-4.7	115.73	-5.1	102.45	2.2	116.84	-0.13
	3	113.76	2.1	107.19	2.4	116.48	2.3	130.16	12.5	99.63	-2.8	115.99	-0.7
	4	120.17	5.6	117.37	9.5	119.63	2.7	134.51	3.3	100.90	1.3	121.18	4.5
	5	113.33	-5.7	107.43	-8.5	114.04	-4.7	130.08	-3.3	107.88	6.9	115.78	-4.5
	6	111.59	-1.5	103.44	-3.7	112.81	-1.1	125.62	-3.4	114.50	6.1	116.66	0.8
	7	114.53	2.6	108.98	5.4	114.68	1.7	125.27	-0.3	119.15	4.1	118.06	1.2
	8	115.53	0.9	111.55	2.4	116.61	1.7	129.56	3.4	113.67	-4.6	115.90	-1.8
	9	117.32	1.6	110.20	-1.2	118.83	1.9	126.43	-2.4	114.05	0.3	122.52	5.7
	10	120.41	2.6	115.66	5.0	120.32	1.3	124.42	-1.6	122.39	7.3	125.05	2.1
	11	119.19	-1.0	110.93	-4.1	120.58	0.2	126.95	2.0	125.32	2.4	125.73	0.5
	12	119.44	0.2	112.06	1.0	124.25	3.0	125.22	-1.4	121.51	-3.0	123.01	-2.2
Annual average		115.93		109.79		117.63		126.32		111.81		119.48	
2022:	1	114.38	-4.2	104.07	-7.1	120.08	-3.4	119.64	-4.5	120.65	-0.7	120.71	-1.9
	2	117.41	2.7	103.36	-0.7	123.44	2.8	130.34	9.0	125.46	4.0	125.89	4.3
	3	123.71	5.4	121.37	17.4	119.88	-2.9	130.00	-0.3	138.13	10.1	127.11	1.0
	4	114.24	-7.7	100.60	-17.1	118.40	-1.2	127.48	-1.9	133.39	-3.4	123.02	-3.2
	5	117.35	2.7	104.41	3.8	119.21	0.7	136.17	6.8	126.32	-5.3	126.13	2.5
	6	121.30	3.4	112.55	7.8	120.27	0.9	139.37	2.3	130.26	3.1	127.47	1.1
	7	122.35	0.9	118.87	5.6	119.11	-1.0	137.85	-1.1	128.69	-1.2	124.66	-2.2

Notes:

1. The indices are rounded up to two decimal digits when published and percentage changes up to one decimal digit when published.
2. The whole time-series with seasonally adjusted indices is recalculated every time a new observation is added in the time-series.

METHODOLOGICAL NOTES

Generally	The Industrial Production Index (IPI) in Greece has been compiled by the Hellenic Statistical Authority (ELSTAT) from 1959 onwards.
Purpose of the index	The objective of the index is to compare the magnitude (volume) of the output in the current month in the mining and quarrying, manufacturing, electricity and water supply divisions with the corresponding output of a given fixed period, which is considered as base period. The Industrial Production Index shows the evolution of the value added of the production factors cost, at constant prices.
Legal framework	The compilation of the IPI is based on the framework of the implementation of Council Regulation (EC) No 1165/1998 concerning short-term statistics (STS-R). Furthermore, the IPI is governed by Regulation (EC) No 1893/2006 of the European Parliament and of the Council, by Commission Regulation (EC) No 656/2007, by Council Regulation (EC) No 451/2008, by Regulation (EU) No 2019/2152 of the European Parliament and of the Council on European business statistics, as well as Commission Implementing Regulation (EU) No 2020/1197 laying down technical specifications and arrangements pursuant to Regulation (EU) No 2019/2152.
Reference period	Month.
Base year	2015=100.0.
Revision	The IPI is a fixed base index. The Industrial Production Index was currently revised with new base year 2015 (2015=100.0) according to the provisions of Council Regulation No 1165/1998 concerning short-term statistics. Short-term indices are revised every five (5) years, particularly in calendar years ending in 0 or 5.
Statistical classifications	At the level of branches of economic activities, the statistical classification of economic activities NACE Rev.2 of EU was used (Regulation No 1893/2006), while at the level of main industrial groupings, the allocation of two-digit and three-digit NACE Rev. 2 headings to categories of aggregate classification was used, in accordance with Council Regulation No 656/2007. At product level, the statistical classification CPA 2008 of EU was used, according to Council Regulation No 451/2008.
Geographical coverage	The index covers the whole Country.
Coverage of economic activities	The index covers all the sections of industry, the main industrial groups, as well as all levels of economic activity.
Statistical survey	The data are collected from a sample of 1.263 enterprises. The survey covers 325 products and the measurement of the surveyed products is made in terms of output quantities or in terms of production value or turnover, according to the specific features in each branch of economic activity.
Seasonal adjustment	Seasonal adjustment is the procedure followed to remove the impact of seasonality on the time-series (i.e. the impact of monthly effects, e.g. holidays, tourist period etc.), in order to improve comparability over time. The method applied is TRAMO-SEATS with the use of JDemetra+ 2.0.0. For the seasonal adjustment of the Industrial Production Index at 2-digit level of NACE Rev.2. at section level (B – Mining and Quarrying, C – Manufacturing, D – Electricity and E – Water Supply) and for the Main Industrial Groupings (MIGs), the direct approach is applied, namely each time-series is seasonally adjusted independently. For the overall Industrial Production Index, the indirect approach is applied, with the seasonally adjusted IPI being computed by aggregating the seasonally adjusted MIGs using appropriate weights.
Publication of data	The revised IPI with the new base year 2015 (2015=100.0) is released since July 2019, with May 2019 as the first reference month. Data with base year 2015=100.0 are available from January 2000 onwards.
References	More information about the methodology concerning the compilation and calculation of the index and the time series are available on the website of the Hellenic Statistical Authority (ELSTAT) (http://www.statistics.gr/en/statistics/-/publication/DKT21/-).