



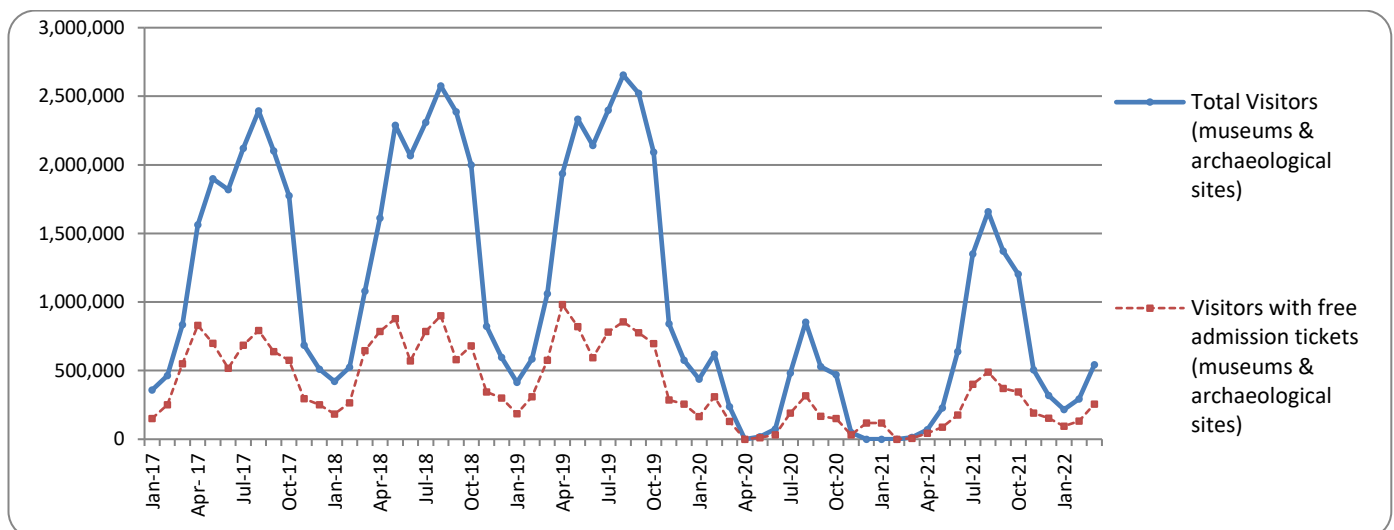
PRESS RELEASE

SURVEY ON MUSEUMS AND ARCHAEOLOGICAL SITES ATTENDANCE MARCH 2022

The Hellenic Statistical Authority (ELSTAT) announces the results of the *Survey on Museums and Archaeological Sites Attendance* for March 2022. More specifically:

- In March 2022 Museums operated fully, whereas during March 2021 they remained closed, given the fact that in the framework of the preventative measures against the Covid-19 pandemic, the operation of the museums was gradually suspended from November 1st 2020 until May 13th 2021 (Table 1).
- In March 2022 Archaeological sites operated fully, whereas during March 2021 they operated for ten (10) days, due to the suspension of operation from November 7th 2020 until March 21st 2021, in the framework of the preventative measures against the Covid-19 pandemic. Compared with the corresponding period of 2021, an increase of 2345.0% was recorded at the number of visitors, an increase of 2012.9% was observed in the number of free admission visitors and an increase of 3168.5% was observed in the corresponding receipts (Table 1).
- During the three month period from January to March 2022, Museums operated fully, in contrast to the corresponding period of 2021, during which they remained closed, given the fact that in the framework of the preventative measures against the Covid-19 pandemic, the operation of the museums was gradually suspended from November 1st 2020 until May 13th 2021 (Table 2).
- As regards Archaeological sites, during the three month period from January to March 2022, compared to the corresponding period of 2021, an increase of 4544.7% was recorded in the number of visitors, while an increase of 3979.1% was observed in the number of free admission visitors and of 5817.1% in the relevant receipts, given the suspension of operation of Archaeological sites from November 7th 2020 until May 13th 2021 (Table 2).

Graph 1: Visitors of Museums and Archaeological sites (January 2017 – March 2022)



Information on methodological issues:

Sectoral Statistics Division
Tourism and Culture Statistics Section
Head of Section: Eleni Papadopoulou
Tel: +30 213 135 2168
e-mail: e.papadopoulou@statistics.gr

Information for data provision:

Tel. +30 213 135 2022, 2308, 2310
e-mail: data.dissem@statistics.gr

**TABLE 1: VISITORS OF MUSEUMS AND ARCHAEOLOGICAL SITES - TOTAL RECEIPTS
(MARCH 2021 & MARCH 2022)**

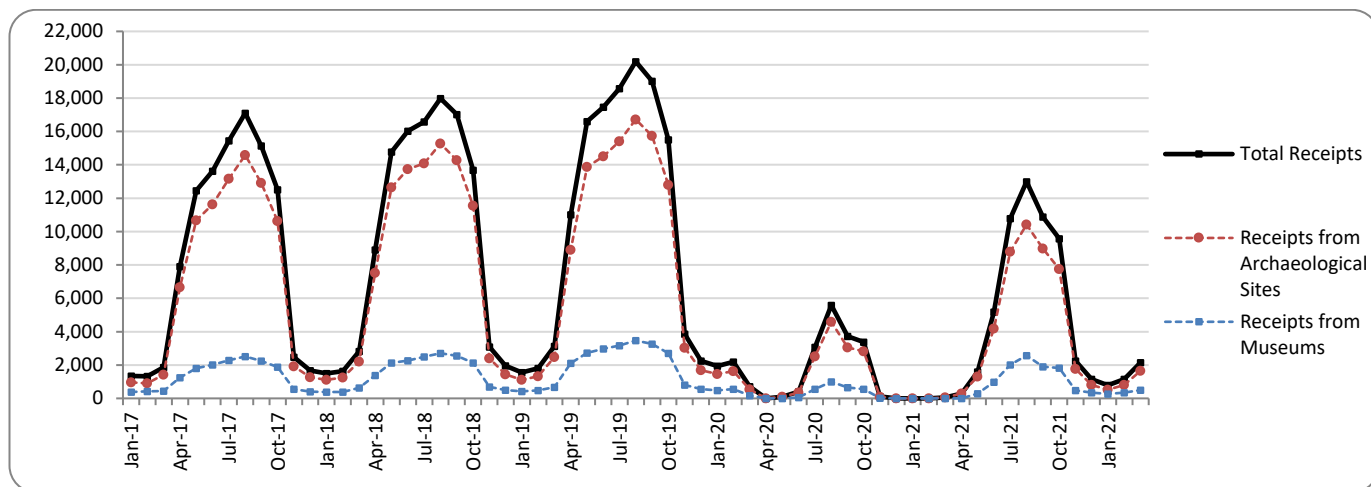
I. NUMBER OF VISITORS			
Museums and Archaeological sites	2021 ⁽²⁾	2022	Change 2022/2021
Total number of visitors (A+B)	13,559	544,306	3914.4%
A. Museums (C+E)	-	212,786	-
Acropolis Museum	-	68,400	-
National Archaeological	-	21,337	-
Ancient Olympia	-	4,279	-
Palace of the Grand Master (Rhodes)	-	2,272	-
Herakleion Archaeological (Crete)	-	4,026	-
White Tower	-	7,998	-
Delphi	-	7,368	-
Other museums	-	97,106	-
B. Archaeological Sites (D+F)	13,559	331,520	2345.0%
Epidavros ⁽¹⁾	103	14,553	14029.1%
The Acropolis of Mycenae & Atreus' Treasure	93	15,306	16358.1%
The Acropolis of Athens	7,157	119,839	1574.4%
Sounio	1,413	17,873	1164.9%
The Acropolis of Lindos	27	1,254	4544.4%
Royal Tombs of Vergina	0	7,668	-
Ancient Olympia	131	9,509	7158.8%
Knossos (Crete)	68	7,329	10677.9%
Phaistos (Crete)	33	739	2139.4%
Ancient Korinthos ⁽¹⁾	104	5,254	4951.9%
Mystras ⁽¹⁾	90	5,408	5908.9%
Delphi	178	13,445	7453.4%
Other archaeological sites	4,162	113,343	2623.3%
II. VISITORS WHO PAID TICKET			
	2021 ⁽²⁾	2022	Change 2022/2021
Total number of visitors who paid ticket (C+D)	6,936	287,079	4039.0%
C. Museums	-	95,498	-
D. Archaeological sites	6,936	191,581	2662.1%
III. VISITORS WITH FREE ADMISSION TICKETS			
	2021 ⁽²⁾	2022	Change 2022/2021
Total number of visitors with free admission ticket (E+F)	6,623	257,227	3783.8%
E. Museums	-	117,288	-
F. Archaeological sites	6,623	139,939	2012.9%
IV. RECEIPTS (euros)			
	2021 ⁽²⁾	2022	Change 2022/2021
Total Receipts (G+H)	50,302	2,140,219	4154.7%
G. Museums	-	496,095	-
H. Archaeological sites	50,302	1,644,124	3168.5%

⁽¹⁾ Flat rate ticket, valid both for the museum and the archaeological site.

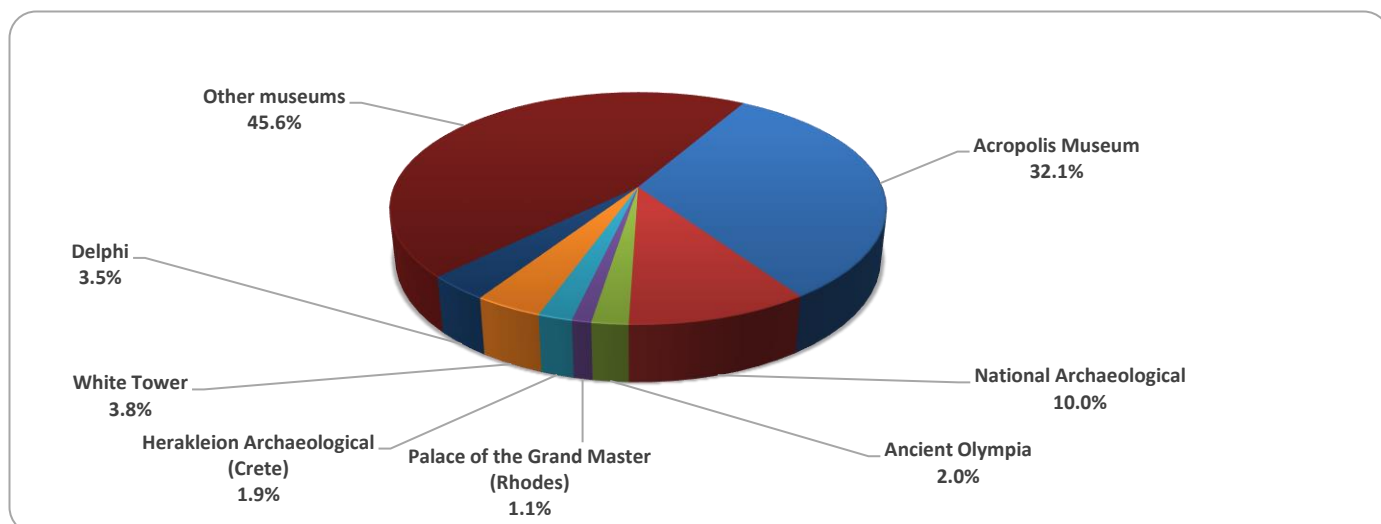
⁽²⁾ The operation of Museums was suspended gradually from November 1st 2020 until May 13th 2021. The operation of Archaeological Sites was suspended from November 7th 2020 until March 21st 2021, in the framework of the preventative measures against the Covid-19 pandemic.

The following graphs depict the evolution of the receipts of Museums and Archaeological Sites (Graph 2), as well as the number of visitors by Museum (Graph 3) and by Archaeological Site (Graph 4).

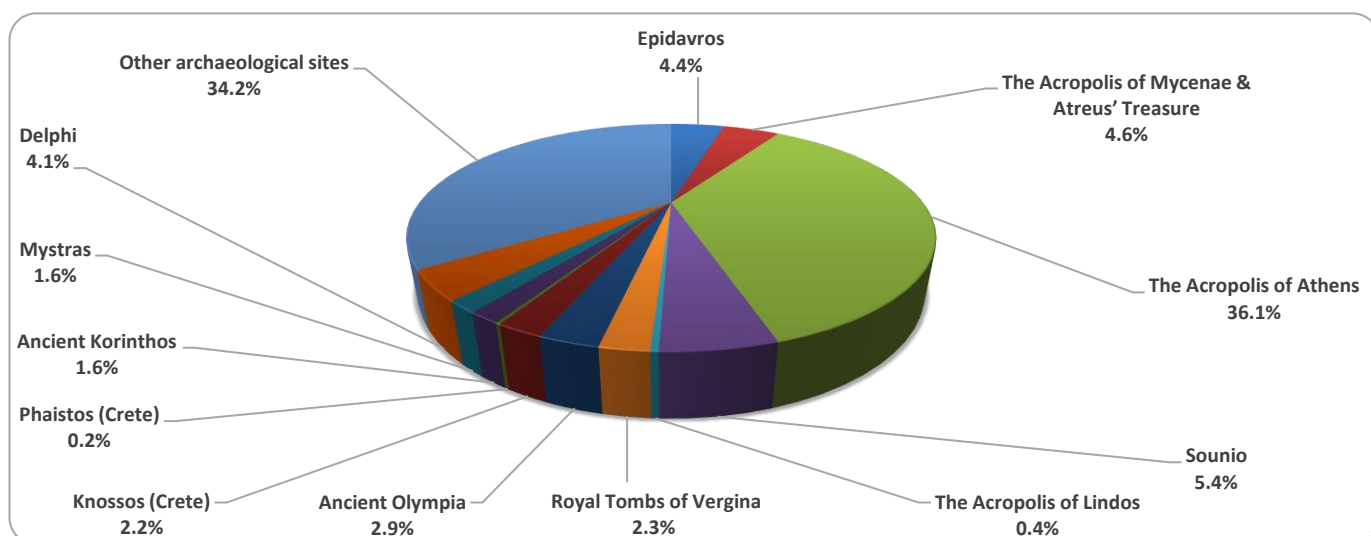
Graph 2: Receipts from Museums and Archaeological Sites (January 2017 – March 2022)
(in thousand euro)



Graph 3: Percentage distribution of visitors by Museum, March 2022



Graph 4: Percentage distribution of visitors by Archaeological site, March 2022



**TABLE 2: VISITORS OF MUSEUMS AND ARCHAEOLOGICAL SITES - TOTAL RECEIPTS
(2020, 2021, JANUARY- MARCH 2021, 2022)**

I. VISITORS					
Museums and Archaeological sites	2020 ⁽²⁾	2021 ⁽²⁾	JANUARY -MARCH		change
			2021 ⁽²⁾	2022	2022/2021
Total number of visitors (A+B)	3,772,828	7,357,026	13,559	1,055,623	7685.4%
A. Museums (C+E)	1,100,904	2,047,481	-	425,846	-
Acropolis Museum	325,969	547,908	-	126,449	-
National Archaeological	98,175	189,208	-	41,192	-
Ancient Olympia	21,956	34,367	-	6,295	-
Palace of the Grand Master (Rhodes)	54,572	142,530	-	4,011	-
Herakleion Archaeological (Crete)	63,027	127,574	-	7,065	-
White Tower	62,007	77,983	-	16,358	-
Delphi	41,984	58,102	-	15,233	-
Other museums	433,214	869,809	-	209,243	-
B. Archaeological Sites (D+F)	2,671,924	5,309,545	13,559	629,777	4544.7%
Epidavros ⁽¹⁾	103,532	182,118	103	23,814	23020.4%
The Acropolis of Mycenae & Atreus' Treasure	78,839	156,227	93	26,178	28048.4%
The Acropolis of Athens	620,132	1,219,717	7,157	234,822	3181.0%
Sounio	100,319	171,348	1,413	40,335	2754.6%
The Acropolis of Lindos	156,462	349,418	27	1,952	7129.6%
Royal Tombs of Vergina	37,586	56,790	0	13,794	-
Ancient Olympia	64,759	143,549	131	13,580	10266.4%
Knossos (Crete)	175,927	445,160	68	11,792	17241.2%
Phaistos (Crete)	31,885	48,599	33	1,159	3412.1%
Ancient Korinthos ⁽¹⁾	31,981	59,271	104	9,295	8837.5%
Mystras ⁽¹⁾	36,352	78,762	90	9,899	10898.9%
Delphi	75,983	146,061	178	29,178	16292.1%
Other archaeological sites	1,158,167	2,252,525	4,162	213,979	5041.3%
II. VISITORS WHO PAID TICKET					
	2020 ⁽²⁾	2021 ⁽²⁾	JANUARY -MARCH		change
			2021 ⁽²⁾	2022	2022/2021
Total number of visitors who paid ticket (C+D)	2,268,397	5,090,418	6,936	570,765	8129.0%
C. Museums	605,426	1,289,896	-	211,145	-
D. Archaeological sites	1,662,971	3,800,522	6,936	359,620	5084.8%
III. VISITORS WITH FREE ADMISSION TICKETS					
	2020 ⁽²⁾	2021 ⁽²⁾	JANUARY -MARCH		change
			2021 ⁽²⁾	2022	2022/2021
Total number of visitors with free admission ticket (E+F)	1,504,431	2,266,608	6,623	484,858	7220.8%
E. Museums	495,478	757,585	-	214,701	-
F. Archaeological sites	1,008,953	1,509,023	6,623	270,157	3979.1%
IV. RECEIPTS (euros)					
	2020 ⁽²⁾	2021 ⁽²⁾	JANUARY -MARCH		change
			2021 ⁽²⁾	2022	2022/2021
Total Receipts (G+H)	21,176,036	54,735,194	50,302	4,090,213	8031.3%
G. Museums	4,047,401	10,385,644	-	1,113,812	-
H. Archaeological sites	17,128,635	44,349,550	50,302	2,976,401	5817.1%

⁽¹⁾ Flat rate ticket, valid both for the museum and the archaeological site.

⁽²⁾ The operation of Museums was suspended from March 14th until June 16th 2020 and again gradually from November 1st 2020 until May 13th 2021. The operation of Archaeological Sites was suspended from March 14th until May 17th 2020 and from November 7th 2020 until March 21st 2021, in the framework of the preventative measures against the Covid-19 pandemic.

EXPLANATORY NOTES

Survey on Museums and Archaeological Sites Attendance

The Survey on Museums and Archaeological Sites Attendance has been producing results since 1970. The survey collects data from the Hellenic Organization of Cultural Resources Development (HOCRED), supervised by the Ministry of Culture and Sports, on the number of visitors and the receipts from the tickets sold in the Museums and Archaeological sites of the country. The corresponding data for the Acropolis Museum is available from December 2009 onwards.

Legal Framework

The survey is conducted since 1970 on a regular basis and it produces results on a monthly and yearly basis, in compliance with the Joint Ministerial Decision 15189/B379/73.

Reference Period

1/3/2022 - 31/3/2022

Methodology and Definitions

The survey is conducted on a monthly basis from data mainly collected from the Hellenic Organization of Cultural Resources Development (HOCRED), supervised by the Ministry of Culture and Sports, on the number of visitors and the receipts from the tickets sold in the Museums and Archaeological sites of the Country. ELSTAT tabulates and presents the data for the whole of the Country, by month and by year.

Number of flat rate tickets:

From April 1999 onwards, in some museums and the nearby archaeological sites, in addition to the ordinary ticket, a new “flat rate ticket” was established, which is valid for both the museum and the nearby archaeological site. The total number of these flat rate tickets for **March 2022** was **12,741**

References

More information on the Survey on Museums and Archaeological Sites Attendance and detailed time series are available on: <http://www.statistics.gr/en/statistics/-/publication/SCI21/>